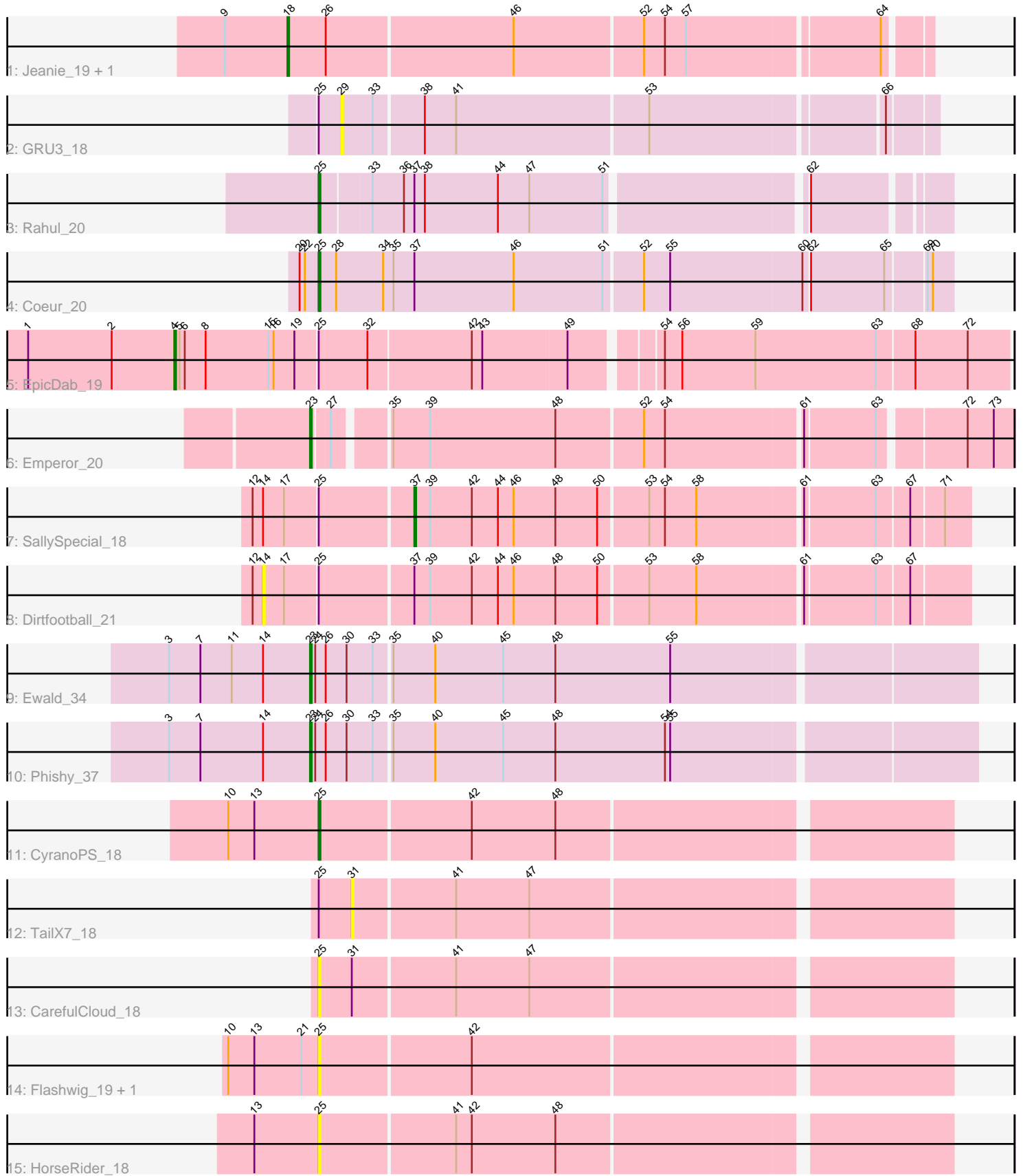


# Pham 280966



Note: Tracks are now grouped by subcluster and scaled. Switching in subcluster is indicated by changes in track color. Track scale is now set by default to display the region 30 bp upstream of start 1 to 30 bp downstream of the last possible start. If this default region is judged to be packed too tightly with annotated starts, the track will be further scaled to only show that region of the ORF with annotated starts. This action will be indicated by adding "Zoomed" to the title. For starts, yellow indicates the location of called starts comprised solely of Glimmer/GeneMark auto-annotations, green indicates the location of called starts with at least 1 manual gene annotation.

## Pham 280966 Report

This analysis was run 02/07/26 on database version 634.

Pham number 280966 has 17 members, 7 are drafts.

Phages represented in each track:

- Track 1 : Jeanie\_19, McGonagall\_19
- Track 2 : GRU3\_18
- Track 3 : Rahul\_20
- Track 4 : Coeur\_20
- Track 5 : EpicDab\_19
- Track 6 : Emperor\_20
- Track 7 : SallySpecial\_18
- Track 8 : Dirtfootball\_21
- Track 9 : Ewald\_34
- Track 10 : Phishy\_37
- Track 11 : CyranoPS\_18
- Track 12 : TailX7\_18
- Track 13 : CarefulCloud\_18
- Track 14 : Flashwig\_19, Jalloh\_18
- Track 15 : HorseRider\_18

### ***Summary of Final Annotations (See graph section above for start numbers):***

The start number called the most often in the published annotations is 25, it was called in 3 of the 10 non-draft genes in the pham.

Genes that call this "Most Annotated" start:

- CarefulCloud\_18, Coeur\_20, CyranoPS\_18, Flashwig\_19, HorseRider\_18, Jalloh\_18, Rahul\_20,

Genes that have the "Most Annotated" start but do not call it:

- Dirtfootball\_21, EpicDab\_19, GRU3\_18, SallySpecial\_18, TailX7\_18,

Genes that do not have the "Most Annotated" start:

- Emperor\_20, Ewald\_34, Jeanie\_19, McGonagall\_19, Phishy\_37,

### **Summary by start number:**

Start 4:

- Found in 1 of 17 ( 5.9% ) of genes in pham
- Manual Annotations of this start: 1 of 10
- Called 100.0% of time when present
- Phage (with cluster) where this start called: EpicDab\_19 (DM),

Start 14:

- Found in 4 of 17 ( 23.5% ) of genes in pham
- No Manual Annotations of this start.
- Called 25.0% of time when present
- Phage (with cluster) where this start called: Dirtfootball\_21 (DM),

Start 18:

- Found in 2 of 17 ( 11.8% ) of genes in pham
- Manual Annotations of this start: 2 of 10
- Called 100.0% of time when present
- Phage (with cluster) where this start called: Jeanie\_19 (CW1), McGonagall\_19 (CW1),

Start 23:

- Found in 3 of 17 ( 17.6% ) of genes in pham
- Manual Annotations of this start: 3 of 10
- Called 100.0% of time when present
- Phage (with cluster) where this start called: Emperor\_20 (DM), Ewald\_34 (DT), Phishy\_37 (DT),

Start 25:

- Found in 12 of 17 ( 70.6% ) of genes in pham
- Manual Annotations of this start: 3 of 10
- Called 58.3% of time when present
- Phage (with cluster) where this start called: CarefulCloud\_18 (ER), Coeur\_20 (CW2), CyranoPS\_18 (ER), Flashwig\_19 (ER), HorseRider\_18 (ER), Jalloh\_18 (ER), Rahul\_20 (CW2),

Start 29:

- Found in 1 of 17 ( 5.9% ) of genes in pham
- No Manual Annotations of this start.
- Called 100.0% of time when present
- Phage (with cluster) where this start called: GRU3\_18 (CW2),

Start 31:

- Found in 2 of 17 ( 11.8% ) of genes in pham
- No Manual Annotations of this start.
- Called 50.0% of time when present
- Phage (with cluster) where this start called: TailX7\_18 (ER),

Start 37:

- Found in 4 of 17 ( 23.5% ) of genes in pham
- Manual Annotations of this start: 1 of 10
- Called 25.0% of time when present
- Phage (with cluster) where this start called: SallySpecial\_18 (DM),

**Summary by clusters:**

There are 5 clusters represented in this pham: CW1, DT, CW2, DM, ER,

Info for manual annotations of cluster CW1:

- Start number 18 was manually annotated 2 times for cluster CW1.

Info for manual annotations of cluster CW2:

- Start number 25 was manually annotated 2 times for cluster CW2.

Info for manual annotations of cluster DM:

- Start number 4 was manually annotated 1 time for cluster DM.
- Start number 23 was manually annotated 1 time for cluster DM.
- Start number 37 was manually annotated 1 time for cluster DM.

Info for manual annotations of cluster DT:

- Start number 23 was manually annotated 2 times for cluster DT.

Info for manual annotations of cluster ER:

- Start number 25 was manually annotated 1 time for cluster ER.

### ***Gene Information:***

Gene: CarefulCloud\_18 Start: 12700, Stop: 12353, Start Num: 25

Candidate Starts for CarefulCloud\_18:

(Start: 25 @12700 has 3 MA's), (31, 12682), (41, 12625), (47, 12583),

Gene: Coeur\_20 Start: 14347, Stop: 13994, Start Num: 25

Candidate Starts for Coeur\_20:

(20, 14356), (22, 14353), (Start: 25 @14347 has 3 MA's), (28, 14338), (34, 14311), (35, 14305), (Start: 37 @14293 has 1 MA's), (46, 14236), (51, 14185), (52, 14164), (55, 14149), (60, 14074), (62, 14071), (65, 14029), (69, 14008), (70, 14005),

Gene: CyranoPS\_18 Start: 12709, Stop: 12362, Start Num: 25

Candidate Starts for CyranoPS\_18:

(10, 12760), (13, 12745), (Start: 25 @12709 has 3 MA's), (42, 12625), (48, 12577),

Gene: Dirtfootball\_21 Start: 14352, Stop: 13966, Start Num: 14

Candidate Starts for Dirtfootball\_21:

(12, 14358), (14, 14352), (17, 14340), (Start: 25 @14322 has 3 MA's), (Start: 37 @14271 has 1 MA's), (39, 14262), (42, 14238), (44, 14223), (46, 14214), (48, 14190), (50, 14166), (53, 14139), (58, 14112), (61, 14055), (63, 14016), (67, 13998),

Gene: Emperor\_20 Start: 14847, Stop: 14473, Start Num: 23

Candidate Starts for Emperor\_20:

(Start: 23 @14847 has 3 MA's), (27, 14838), (35, 14811), (39, 14790), (48, 14718), (52, 14670), (54, 14658), (61, 14583), (63, 14544), (72, 14499), (73, 14484),

Gene: EpicDab\_19 Start: 14735, Stop: 14277, Start Num: 4

Candidate Starts for EpicDab\_19:

(1, 14819), (2, 14771), (Start: 4 @14735 has 1 MA's), (5, 14732), (6, 14729), (8, 14717), (15, 14681), (16, 14678), (19, 14666), (Start: 25 @14654 has 3 MA's), (32, 14627), (42, 14570), (43, 14564), (49, 14516), (54, 14471), (56, 14462), (59, 14420), (63, 14351), (68, 14330), (72, 14300),

Gene: Ewald\_34 Start: 29912, Stop: 29541, Start Num: 23

Candidate Starts for Ewald\_34:

(3, 29993), (7, 29975), (11, 29957), (14, 29939), (Start: 23 @29912 has 3 MA's), (24, 29909), (26, 29903), (30, 29891), (33, 29876), (35, 29867), (40, 29843), (45, 29804), (48, 29774), (55, 29708),

Gene: Flashwig\_19 Start: 13296, Stop: 12949, Start Num: 25

Candidate Starts for Flashwig\_19:

(10, 13347), (13, 13332), (21, 13305), (Start: 25 @13296 has 3 MA's), (42, 13212),

Gene: GRU3\_18 Start: 14485, Stop: 14162, Start Num: 29

Candidate Starts for GRU3\_18:

(Start: 25 @14497 has 3 MA's), (29, 14485), (33, 14467), (38, 14440), (41, 14422), (53, 14314), (66, 14188),

Gene: HorseRider\_18 Start: 12756, Stop: 12409, Start Num: 25

Candidate Starts for HorseRider\_18:

(13, 12792), (Start: 25 @12756 has 3 MA's), (41, 12681), (42, 12672), (48, 12624),

Gene: Jalloh\_18 Start: 12552, Stop: 12205, Start Num: 25

Candidate Starts for Jalloh\_18:

(10, 12603), (13, 12588), (21, 12561), (Start: 25 @12552 has 3 MA's), (42, 12468),

Gene: Jeanie\_19 Start: 13938, Stop: 13588, Start Num: 18

Candidate Starts for Jeanie\_19:

(9, 13974), (Start: 18 @13938 has 2 MA's), (26, 13917), (46, 13812), (52, 13740), (54, 13728), (57, 13716), (64, 13611),

Gene: McGonagall\_19 Start: 13938, Stop: 13588, Start Num: 18

Candidate Starts for McGonagall\_19:

(9, 13974), (Start: 18 @13938 has 2 MA's), (26, 13917), (46, 13812), (52, 13740), (54, 13728), (57, 13716), (64, 13611),

Gene: Phishy\_37 Start: 31530, Stop: 31159, Start Num: 23

Candidate Starts for Phishy\_37:

(3, 31611), (7, 31593), (14, 31557), (Start: 23 @31530 has 3 MA's), (24, 31527), (26, 31521), (30, 31509), (33, 31494), (35, 31485), (40, 31461), (45, 31422), (48, 31392), (54, 31329), (55, 31326),

Gene: Rahul\_20 Start: 14354, Stop: 14019, Start Num: 25

Candidate Starts for Rahul\_20:

(Start: 25 @14354 has 3 MA's), (33, 14327), (36, 14309), (Start: 37 @14303 has 1 MA's), (38, 14297), (44, 14255), (47, 14237), (51, 14195), (62, 14090),

Gene: SallySpecial\_18 Start: 14300, Stop: 13995, Start Num: 37

Candidate Starts for SallySpecial\_18:

(12, 14387), (14, 14381), (17, 14369), (Start: 25 @14351 has 3 MA's), (Start: 37 @14300 has 1 MA's), (39, 14291), (42, 14267), (44, 14252), (46, 14243), (48, 14219), (50, 14195), (53, 14168), (54, 14159), (58, 14141), (61, 14084), (63, 14045), (67, 14027), (71, 14009),

Gene: TailX7\_18 Start: 12830, Stop: 12501, Start Num: 31

Candidate Starts for TailX7\_18:

(Start: 25 @12848 has 3 MA's), (31, 12830), (41, 12773), (47, 12731),