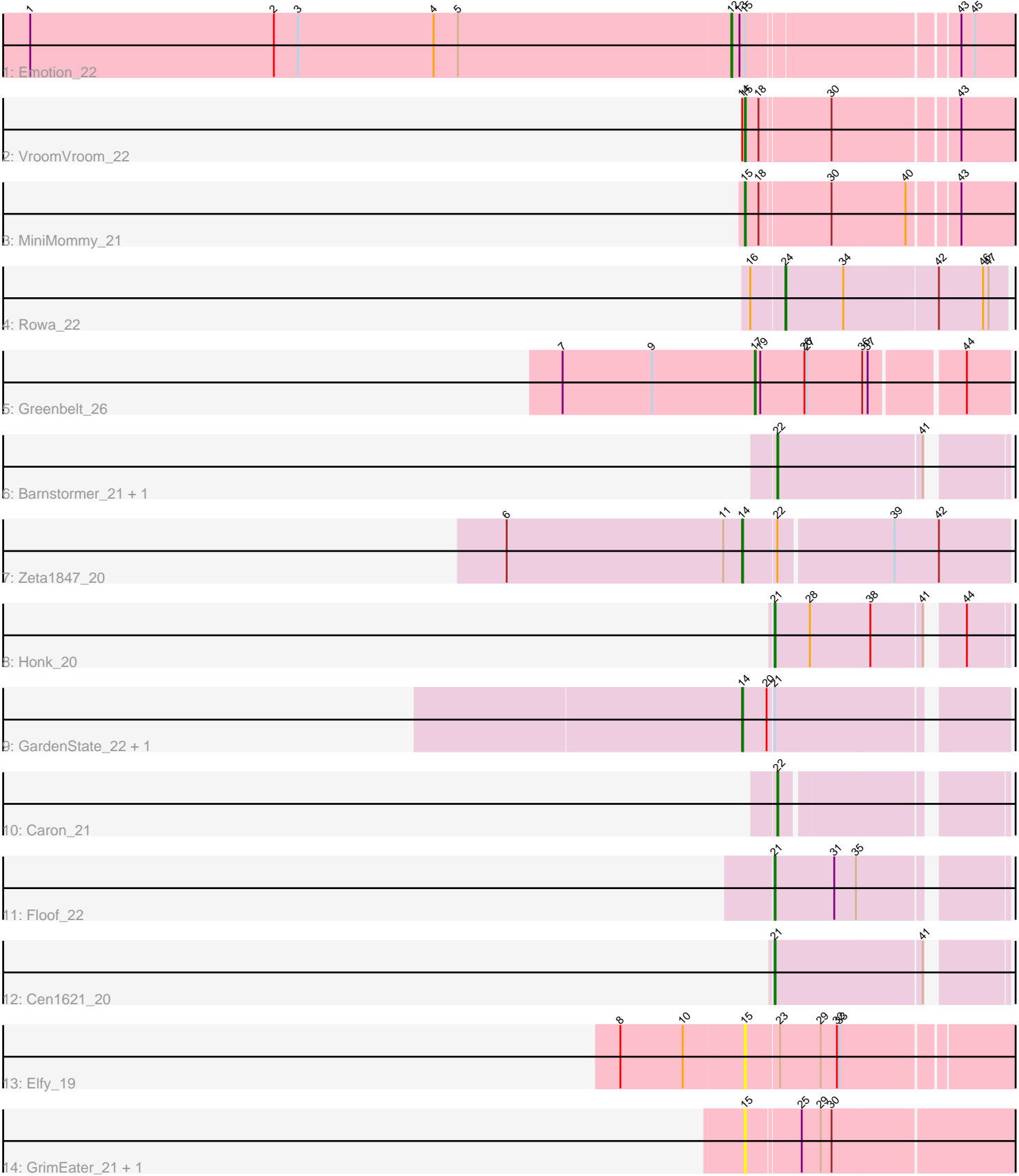


Pham 280971



Note: Tracks are now grouped by subcluster and scaled. Switching in subcluster is indicated by changes in track color. Track scale is now set by default to display the region 30 bp upstream of start 1 to 30 bp downstream of the last possible start. If this default region is judged to be packed too tightly with annotated starts, the track will be further scaled to only show that region of the ORF with annotated starts. This action will be indicated by adding "Zoomed" to the title. For starts, yellow indicates the location of called starts comprised solely of Glimmer/GeneMark auto-annotations, green indicates the location of called starts with at least 1 manual gene annotation.

## Pham 280971 Report

This analysis was run 02/07/26 on database version 634.

Pham number 280971 has 17 members, 3 are drafts.

Phages represented in each track:

- Track 1 : Emotion\_22
- Track 2 : VroomVroom\_22
- Track 3 : MiniMommy\_21
- Track 4 : Rowa\_22
- Track 5 : Greenbelt\_26
- Track 6 : Barnstormer\_21, UtzChips\_21
- Track 7 : Zeta1847\_20
- Track 8 : Honk\_20
- Track 9 : GardenState\_22, IAmGroot\_22
- Track 10 : Caron\_21
- Track 11 : Floof\_22
- Track 12 : Cen1621\_20
- Track 13 : Elfy\_19
- Track 14 : GrimEater\_21, Jankie\_22

### ***Summary of Final Annotations (See graph section above for start numbers):***

The start number called the most often in the published annotations is 14, it was called in 3 of the 14 non-draft genes in the pham.

Genes that call this "Most Annotated" start:

- GardenState\_22, IAmGroot\_22, Zeta1847\_20,

Genes that have the "Most Annotated" start but do not call it:

- VroomVroom\_22,

Genes that do not have the "Most Annotated" start:

- Barnstormer\_21, Caron\_21, Cen1621\_20, Elfy\_19, Emotion\_22, Floof\_22, Greenbelt\_26, GrimEater\_21, Honk\_20, Jankie\_22, MiniMommy\_21, Rowa\_22, UtzChips\_21,

### **Summary by start number:**

Start 12:

- Found in 1 of 17 ( 5.9% ) of genes in pham
- Manual Annotations of this start: 1 of 14
- Called 100.0% of time when present
- Phage (with cluster) where this start called: Emotion\_22 (AZ4),

Start 14:

- Found in 4 of 17 ( 23.5% ) of genes in pham
- Manual Annotations of this start: 3 of 14
- Called 75.0% of time when present
- Phage (with cluster) where this start called: GardenState\_22 (EH), IAmGroot\_22 (EH), Zeta1847\_20 (EH),

Start 15:

- Found in 6 of 17 ( 35.3% ) of genes in pham
- Manual Annotations of this start: 2 of 14
- Called 83.3% of time when present
- Phage (with cluster) where this start called: Elfy\_19 (FP), GrimEater\_21 (FP), Jankie\_22 (FP), MiniMommy\_21 (AZ4), VroomVroom\_22 (AZ4),

Start 17:

- Found in 1 of 17 ( 5.9% ) of genes in pham
- Manual Annotations of this start: 1 of 14
- Called 100.0% of time when present
- Phage (with cluster) where this start called: Greenbelt\_26 (BN),

Start 21:

- Found in 5 of 17 ( 29.4% ) of genes in pham
- Manual Annotations of this start: 3 of 14
- Called 60.0% of time when present
- Phage (with cluster) where this start called: Cen1621\_20 (EH), Floof\_22 (EH), Honk\_20 (EH),

Start 22:

- Found in 4 of 17 ( 23.5% ) of genes in pham
- Manual Annotations of this start: 3 of 14
- Called 75.0% of time when present
- Phage (with cluster) where this start called: Barnstormer\_21 (EH), Caron\_21 (EH), UtzChips\_21 (EH),

Start 24:

- Found in 1 of 17 ( 5.9% ) of genes in pham
- Manual Annotations of this start: 1 of 14
- Called 100.0% of time when present
- Phage (with cluster) where this start called: Rowa\_22 (BL),

### **Summary by clusters:**

There are 5 clusters represented in this pham: BL, FP, BN, AZ4, EH,

Info for manual annotations of cluster AZ4:

- Start number 12 was manually annotated 1 time for cluster AZ4.
- Start number 15 was manually annotated 2 times for cluster AZ4.

Info for manual annotations of cluster BL:

- Start number 24 was manually annotated 1 time for cluster BL.

Info for manual annotations of cluster BN:

- Start number 17 was manually annotated 1 time for cluster BN.

Info for manual annotations of cluster EH:

- Start number 14 was manually annotated 3 times for cluster EH.
- Start number 21 was manually annotated 3 times for cluster EH.
- Start number 22 was manually annotated 3 times for cluster EH.

### ***Gene Information:***

Gene: Barnstormer\_21 Start: 18602, Stop: 18829, Start Num: 22

Candidate Starts for Barnstormer\_21:

(Start: 22 @18602 has 3 MA's), (41, 18755),

Gene: Caron\_21 Start: 17996, Stop: 18214, Start Num: 22

Candidate Starts for Caron\_21:

(Start: 22 @17996 has 3 MA's),

Gene: Cen1621\_20 Start: 17053, Stop: 17283, Start Num: 21

Candidate Starts for Cen1621\_20:

(Start: 21 @17053 has 3 MA's), (41, 17209),

Gene: Elfy\_19 Start: 17633, Stop: 17914, Start Num: 15

Candidate Starts for Elfy\_19:

(8, 17498), (10, 17567), (Start: 15 @17633 has 2 MA's), (23, 17669), (29, 17714), (32, 17732), (33, 17735),

Gene: Emotion\_22 Start: 19071, Stop: 19367, Start Num: 12

Candidate Starts for Emotion\_22:

(1, 18297), (2, 18567), (3, 18594), (4, 18744), (5, 18771), (Start: 12 @19071 has 1 MA's), (13, 19080), (Start: 15 @19086 has 2 MA's), (43, 19299), (45, 19314),

Gene: Floof\_22 Start: 18710, Stop: 18940, Start Num: 21

Candidate Starts for Floof\_22:

(Start: 21 @18710 has 3 MA's), (31, 18773), (35, 18797),

Gene: GardenState\_22 Start: 19038, Stop: 19304, Start Num: 14

Candidate Starts for GardenState\_22:

(Start: 14 @19038 has 3 MA's), (20, 19065), (Start: 21 @19071 has 3 MA's),

Gene: Greenbelt\_26 Start: 18740, Stop: 19006, Start Num: 17

Candidate Starts for Greenbelt\_26:

(7, 18527), (9, 18626), (Start: 17 @18740 has 1 MA's), (19, 18746), (26, 18794), (27, 18797), (36, 18857), (37, 18863), (44, 18959),

Gene: GrimEater\_21 Start: 17871, Stop: 18206, Start Num: 15

Candidate Starts for GrimEater\_21:

(Start: 15 @17871 has 2 MA's), (25, 17925), (29, 17946), (30, 17958),

Gene: Honk\_20 Start: 16911, Stop: 17141, Start Num: 21

Candidate Starts for Honk\_20:

(Start: 21 @16911 has 3 MA's), (28, 16947), (38, 17013), (41, 17067), (44, 17097),

Gene: IAmGroot\_22 Start: 19699, Stop: 19965, Start Num: 14

Candidate Starts for IAmGroot\_22:

(Start: 14 @19699 has 3 MA's), (20, 19726), (Start: 21 @19732 has 3 MA's),

Gene: Jankie\_22 Start: 17870, Stop: 18205, Start Num: 15

Candidate Starts for Jankie\_22:

(Start: 15 @17870 has 2 MA's), (25, 17924), (29, 17945), (30, 17957),

Gene: MiniMommy\_21 Start: 18492, Stop: 18773, Start Num: 15

Candidate Starts for MiniMommy\_21:

(Start: 15 @18492 has 2 MA's), (18, 18507), (30, 18579), (40, 18660), (43, 18708),

Gene: Rowa\_22 Start: 18255, Stop: 18494, Start Num: 24

Candidate Starts for Rowa\_22:

(16, 18219), (Start: 24 @18255 has 1 MA's), (34, 18318), (42, 18420), (46, 18468), (47, 18474),

Gene: UtzChips\_21 Start: 18590, Stop: 18817, Start Num: 22

Candidate Starts for UtzChips\_21:

(Start: 22 @18590 has 3 MA's), (41, 18743),

Gene: VroomVroom\_22 Start: 18499, Stop: 18783, Start Num: 15

Candidate Starts for VroomVroom\_22:

(Start: 14 @18496 has 3 MA's), (Start: 15 @18499 has 2 MA's), (18, 18514), (30, 18586), (43, 18715),

Gene: Zeta1847\_20 Start: 18641, Stop: 18922, Start Num: 14

Candidate Starts for Zeta1847\_20:

(6, 18380), (11, 18620), (Start: 14 @18641 has 3 MA's), (Start: 22 @18677 has 3 MA's), (39, 18797), (42, 18845),