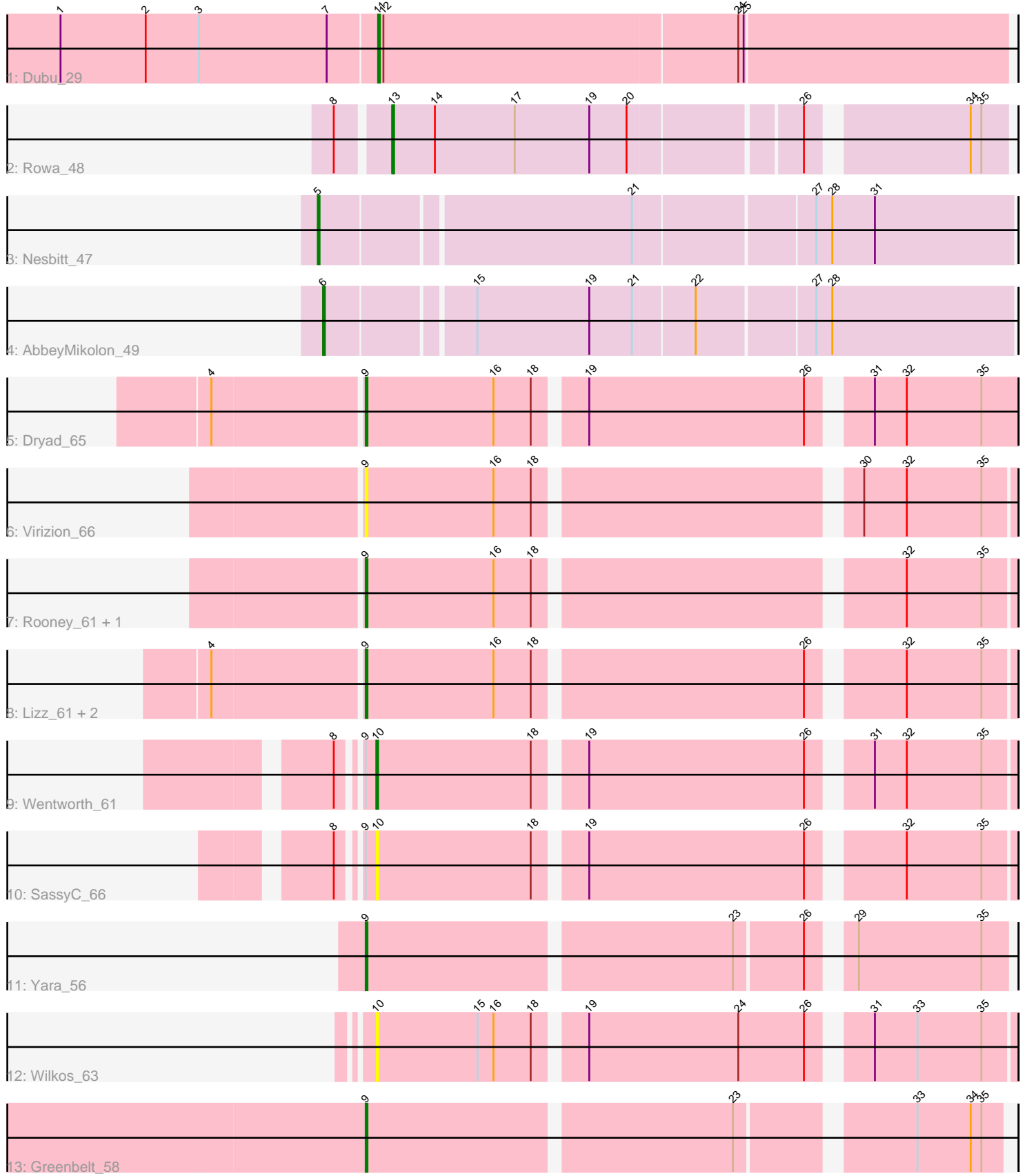


Pham 280983



Note: Tracks are now grouped by subcluster and scaled. Switching in subcluster is indicated by changes in track color. Track scale is now set by default to display the region 30 bp upstream of start 1 to 30 bp downstream of the last possible start. If this default region is judged to be packed too tightly with annotated starts, the track will be further scaled to only show that region of the ORF with annotated starts. This action will be indicated by adding "Zoomed" to the title. For starts, yellow indicates the location of called starts comprised solely of Glimmer/GeneMark auto-annotations, green indicates the location of called starts with at least 1 manual gene annotation.

Pham 280983 Report

This analysis was run 02/07/26 on database version 634.

Pham number 280983 has 16 members, 3 are drafts.

Phages represented in each track:

- Track 1 : Dubu_29
- Track 2 : Rowa_48
- Track 3 : Nesbitt_47
- Track 4 : AbbeyMikolon_49
- Track 5 : Dryad_65
- Track 6 : Virizion_66
- Track 7 : Rooney_61, Gibson_61
- Track 8 : Lizz_61, PHTowN_61, ShakeNBake_61
- Track 9 : Wentworth_61
- Track 10 : SassyC_66
- Track 11 : Yara_56
- Track 12 : Wilkos_63
- Track 13 : Greenbelt_58

Summary of Final Annotations (See graph section above for start numbers):

The start number called the most often in the published annotations is 9, it was called in 8 of the 13 non-draft genes in the pham.

Genes that call this "Most Annotated" start:

- Dryad_65, Gibson_61, Greenbelt_58, Lizz_61, PHTowN_61, Rooney_61, ShakeNBake_61, Virizion_66, Yara_56,

Genes that have the "Most Annotated" start but do not call it:

- SassyC_66, Wentworth_61,

Genes that do not have the "Most Annotated" start:

- AbbeyMikolon_49, Dubu_29, Nesbitt_47, Rowa_48, Wilkos_63,

Summary by start number:

Start 5:

- Found in 1 of 16 (6.2%) of genes in pham
- Manual Annotations of this start: 1 of 13

- Called 100.0% of time when present
- Phage (with cluster) where this start called: Nesbitt_47 (BL),

Start 6:

- Found in 1 of 16 (6.2%) of genes in pham
- Manual Annotations of this start: 1 of 13
- Called 100.0% of time when present
- Phage (with cluster) where this start called: AbbeyMikolon_49 (BL),

Start 9:

- Found in 11 of 16 (68.8%) of genes in pham
- Manual Annotations of this start: 8 of 13
- Called 81.8% of time when present
- Phage (with cluster) where this start called: Dryad_65 (BN), Gibson_61 (BN), Greenbelt_58 (BN), Lizz_61 (BN), PHTowN_61 (BN), Rooney_61 (BN), ShakeNBake_61 (BN), Virizion_66 (BN), Yara_56 (BN),

Start 10:

- Found in 3 of 16 (18.8%) of genes in pham
- Manual Annotations of this start: 1 of 13
- Called 100.0% of time when present
- Phage (with cluster) where this start called: SassyC_66 (BN), Wentworth_61 (BN), Wilkos_63 (BN),

Start 11:

- Found in 1 of 16 (6.2%) of genes in pham
- Manual Annotations of this start: 1 of 13
- Called 100.0% of time when present
- Phage (with cluster) where this start called: Dubu_29 (BJ),

Start 13:

- Found in 1 of 16 (6.2%) of genes in pham
- Manual Annotations of this start: 1 of 13
- Called 100.0% of time when present
- Phage (with cluster) where this start called: Rowa_48 (BL),

Summary by clusters:

There are 3 clusters represented in this pham: BL, BN, BJ,

Info for manual annotations of cluster BJ:

- Start number 11 was manually annotated 1 time for cluster BJ.

Info for manual annotations of cluster BL:

- Start number 5 was manually annotated 1 time for cluster BL.
- Start number 6 was manually annotated 1 time for cluster BL.
- Start number 13 was manually annotated 1 time for cluster BL.

Info for manual annotations of cluster BN:

- Start number 9 was manually annotated 8 times for cluster BN.
- Start number 10 was manually annotated 1 time for cluster BN.

Gene Information:

Gene: AbbeyMikolon_49 Start: 34450, Stop: 34821, Start Num: 6

Candidate Starts for AbbeyMikolon_49:

(Start: 6 @34450 has 1 MA's), (15, 34528), (19, 34591), (21, 34615), (22, 34648), (27, 34711), (28, 34720),

Gene: Dryad_65 Start: 44270, Stop: 43926, Start Num: 9

Candidate Starts for Dryad_65:

(4, 44351), (Start: 9 @44270 has 8 MA's), (16, 44198), (18, 44177), (19, 44153), (26, 44033), (31, 44006), (32, 43988), (35, 43946),

Gene: Dubu_29 Start: 22724, Stop: 23071, Start Num: 11

Candidate Starts for Dubu_29:

(1, 22547), (2, 22595), (3, 22625), (7, 22697), (Start: 11 @22724 has 1 MA's), (12, 22727), (24, 22922), (25, 22925),

Gene: Gibson_61 Start: 43510, Stop: 43169, Start Num: 9

Candidate Starts for Gibson_61:

(Start: 9 @43510 has 8 MA's), (16, 43438), (18, 43417), (32, 43228), (35, 43186),

Gene: Greenbelt_58 Start: 39592, Stop: 39260, Start Num: 9

Candidate Starts for Greenbelt_58:

(Start: 9 @39592 has 8 MA's), (23, 39394), (33, 39307), (34, 39277), (35, 39271),

Gene: Lizz_61 Start: 43350, Stop: 43009, Start Num: 9

Candidate Starts for Lizz_61:

(4, 43431), (Start: 9 @43350 has 8 MA's), (16, 43278), (18, 43257), (26, 43113), (32, 43068), (35, 43026),

Gene: Nesbitt_47 Start: 34330, Stop: 34704, Start Num: 5

Candidate Starts for Nesbitt_47:

(Start: 5 @34330 has 1 MA's), (21, 34498), (27, 34594), (28, 34603), (31, 34627),

Gene: PHTowN_61 Start: 43348, Stop: 43007, Start Num: 9

Candidate Starts for PHTowN_61:

(4, 43429), (Start: 9 @43348 has 8 MA's), (16, 43276), (18, 43255), (26, 43111), (32, 43066), (35, 43024),

Gene: Rooney_61 Start: 43507, Stop: 43166, Start Num: 9

Candidate Starts for Rooney_61:

(Start: 9 @43507 has 8 MA's), (16, 43435), (18, 43414), (32, 43225), (35, 43183),

Gene: Rowa_48 Start: 34719, Stop: 35042, Start Num: 13

Candidate Starts for Rowa_48:

(8, 34692), (Start: 13 @34719 has 1 MA's), (14, 34743), (17, 34788), (19, 34830), (20, 34851), (26, 34941), (34, 35022), (35, 35028),

Gene: SassyC_66 Start: 44485, Stop: 44150, Start Num: 10

Candidate Starts for SassyC_66:

(8, 44500), (Start: 9 @44491 has 8 MA's), (Start: 10 @44485 has 1 MA's), (18, 44398), (19, 44374), (26, 44254), (32, 44209), (35, 44167),

Gene: ShakeNBake_61 Start: 43366, Stop: 43025, Start Num: 9

Candidate Starts for ShakeNBake_61:

(4, 43447), (Start: 9 @43366 has 8 MA's), (16, 43294), (18, 43273), (26, 43129), (32, 43084), (35, 43042),

Gene: Virizion_66 Start: 43706, Stop: 43365, Start Num: 9

Candidate Starts for Virizion_66:

(Start: 9 @43706 has 8 MA's), (16, 43634), (18, 43613), (30, 43448), (32, 43424), (35, 43382),

Gene: Wentworth_61 Start: 43514, Stop: 43179, Start Num: 10

Candidate Starts for Wentworth_61:

(8, 43529), (Start: 9 @43520 has 8 MA's), (Start: 10 @43514 has 1 MA's), (18, 43427), (19, 43403), (26, 43283), (31, 43256), (32, 43238), (35, 43196),

Gene: Wilkos_63 Start: 43658, Stop: 43323, Start Num: 10

Candidate Starts for Wilkos_63:

(Start: 10 @43658 has 1 MA's), (15, 43601), (16, 43592), (18, 43571), (19, 43547), (24, 43463), (26, 43427), (31, 43400), (33, 43376), (35, 43340),

Gene: Yara_56 Start: 41985, Stop: 41650, Start Num: 9

Candidate Starts for Yara_56:

(Start: 9 @41985 has 8 MA's), (23, 41787), (26, 41751), (29, 41733), (35, 41664),