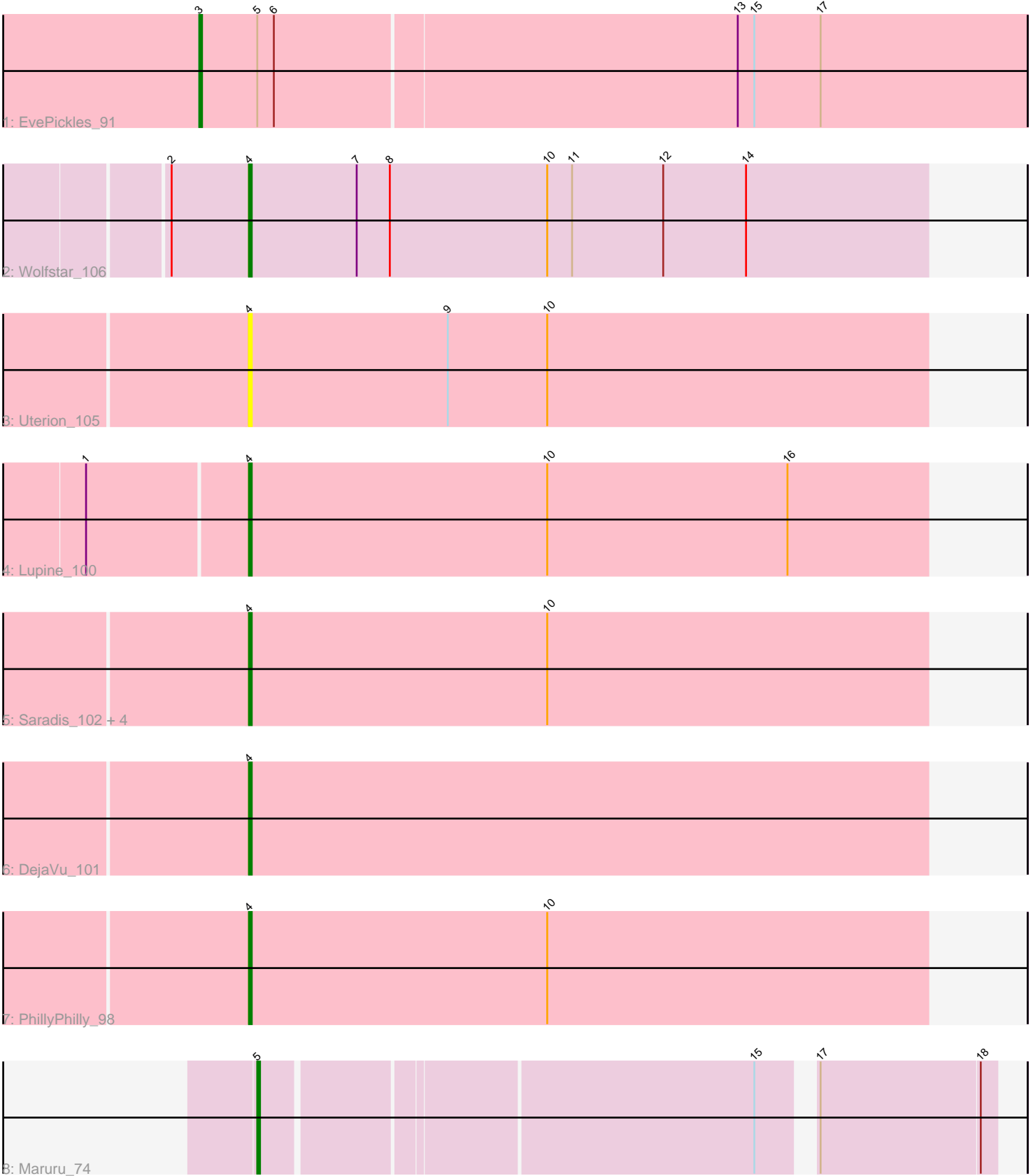


Pham 281052



Note: Tracks are now grouped by subcluster and scaled. Switching in subcluster is indicated by changes in track color. Track scale is now set by default to display the region 30 bp upstream of start 1 to 30 bp downstream of the last possible start. If this default region is judged to be packed too tightly with annotated starts, the track will be further scaled to only show that region of the ORF with annotated starts. This action will be indicated by adding "Zoomed" to the title. For starts, yellow indicates the location of called starts comprised solely of Glimmer/GeneMark auto-annotations, green indicates the location of called starts with at least 1 manual gene annotation.

## Pham 281052 Report

This analysis was run 02/07/26 on database version 634.

Pham number 281052 has 12 members, 3 are drafts.

Phages represented in each track:

- Track 1 : EvePickles\_91
- Track 2 : Wolfstar\_106
- Track 3 : Uterion\_105
- Track 4 : Lupine\_100
- Track 5 : Saradis\_102, Pavlo\_101, Solimine\_102, Hubbs\_100, Roman\_102
- Track 6 : DejaVu\_101
- Track 7 : PhillyPhilly\_98
- Track 8 : Maruru\_74

### ***Summary of Final Annotations (See graph section above for start numbers):***

The start number called the most often in the published annotations is 4, it was called in 7 of the 9 non-draft genes in the pham.

Genes that call this "Most Annotated" start:

- DejaVu\_101, Hubbs\_100, Lupine\_100, Pavlo\_101, PhillyPhilly\_98, Roman\_102, Saradis\_102, Solimine\_102, Uterion\_105, Wolfstar\_106,

Genes that have the "Most Annotated" start but do not call it:

- 

Genes that do not have the "Most Annotated" start:

- EvePickles\_91, Maruru\_74,

### **Summary by start number:**

Start 3:

- Found in 1 of 12 ( 8.3% ) of genes in pham
- Manual Annotations of this start: 1 of 9
- Called 100.0% of time when present
- Phage (with cluster) where this start called: EvePickles\_91 (AY),

Start 4:

- Found in 10 of 12 ( 83.3% ) of genes in pham

- Manual Annotations of this start: 7 of 9
- Called 100.0% of time when present
- Phage (with cluster) where this start called: DejaVu\_101 (ED1), Hubbs\_100 (ED1), Lupine\_100 (ED1), Pavlo\_101 (ED1), PhillyPhilly\_98 (ED1), Roman\_102 (ED1), Saradis\_102 (ED1), Solimine\_102 (ED1), Uterion\_105 (ED1), Wolfstar\_106 (ED),

Start 5:

- Found in 2 of 12 ( 16.7% ) of genes in pham
- Manual Annotations of this start: 1 of 9
- Called 50.0% of time when present
- Phage (with cluster) where this start called: Maruru\_74 (FG),

### **Summary by clusters:**

There are 4 clusters represented in this pham: AY, ED, ED1, FG,

Info for manual annotations of cluster AY:

- Start number 3 was manually annotated 1 time for cluster AY.

Info for manual annotations of cluster ED:

- Start number 4 was manually annotated 1 time for cluster ED.

Info for manual annotations of cluster ED1:

- Start number 4 was manually annotated 6 times for cluster ED1.

Info for manual annotations of cluster FG:

- Start number 5 was manually annotated 1 time for cluster FG.

### **Gene Information:**

Gene: DejaVu\_101 Start: 55313, Stop: 55068, Start Num: 4

Candidate Starts for DejaVu\_101:

(Start: 4 @55313 has 7 MA's),

Gene: EvePickles\_91 Start: 50887, Stop: 51183, Start Num: 3

Candidate Starts for EvePickles\_91:

(Start: 3 @50887 has 1 MA's), (Start: 5 @50908 has 1 MA's), (6, 50914), (13, 51079), (15, 51085), (17, 51109),

Gene: Hubbs\_100 Start: 55583, Stop: 55338, Start Num: 4

Candidate Starts for Hubbs\_100:

(Start: 4 @55583 has 7 MA's), (10, 55475),

Gene: Lupine\_100 Start: 55291, Stop: 55046, Start Num: 4

Candidate Starts for Lupine\_100:

(1, 55348), (Start: 4 @55291 has 7 MA's), (10, 55183), (16, 55096),

Gene: Maruru\_74 Start: 47670, Stop: 47918, Start Num: 5

Candidate Starts for Maruru\_74:

(Start: 5 @47670 has 1 MA's), (15, 47841), (17, 47856), (18, 47913),

Gene: Pavlo\_101 Start: 55978, Stop: 55733, Start Num: 4

Candidate Starts for Pavlo\_101:

(Start: 4 @55978 has 7 MA's), (10, 55870),

Gene: PhillyPhilly\_98 Start: 54967, Stop: 54722, Start Num: 4

Candidate Starts for PhillyPhilly\_98:

(Start: 4 @54967 has 7 MA's), (10, 54859),

Gene: Roman\_102 Start: 56027, Stop: 55782, Start Num: 4

Candidate Starts for Roman\_102:

(Start: 4 @56027 has 7 MA's), (10, 55919),

Gene: Saradis\_102 Start: 54988, Stop: 54743, Start Num: 4

Candidate Starts for Saradis\_102:

(Start: 4 @54988 has 7 MA's), (10, 54880),

Gene: Solimine\_102 Start: 55899, Stop: 55654, Start Num: 4

Candidate Starts for Solimine\_102:

(Start: 4 @55899 has 7 MA's), (10, 55791),

Gene: Uterion\_105 Start: 55415, Stop: 55170, Start Num: 4

Candidate Starts for Uterion\_105:

(Start: 4 @55415 has 7 MA's), (9, 55343), (10, 55307),

Gene: Wolfstar\_106 Start: 57750, Stop: 57505, Start Num: 4

Candidate Starts for Wolfstar\_106:

(2, 57777), (Start: 4 @57750 has 7 MA's), (7, 57711), (8, 57699), (10, 57642), (11, 57633), (12, 57600), (14, 57570),