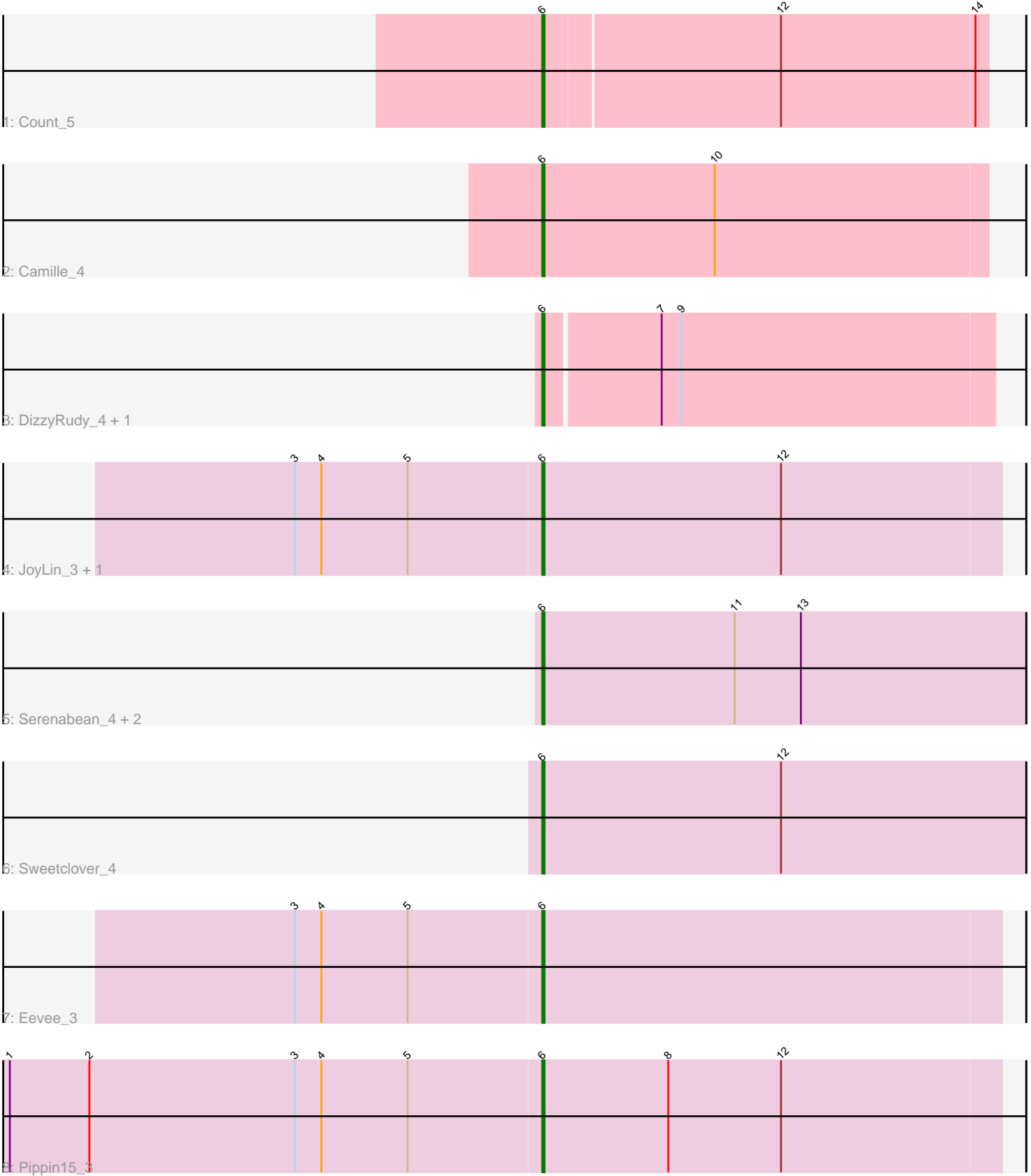


Pham 281061



Note: Tracks are now grouped by subcluster and scaled. Switching in subcluster is indicated by changes in track color. Track scale is now set by default to display the region 30 bp upstream of start 1 to 30 bp downstream of the last possible start. If this default region is judged to be packed too tightly with annotated starts, the track will be further scaled to only show that region of the ORF with annotated starts. This action will be indicated by adding "Zoomed" to the title. For starts, yellow indicates the location of called starts comprised solely of Glimmer/GeneMark auto-annotations, green indicates the location of called starts with at least 1 manual gene annotation.

## Pham 281061 Report

This analysis was run 02/07/26 on database version 634.

Pham number 281061 has 12 members, 0 are drafts.

Phages represented in each track:

- Track 1 : Count\_5
- Track 2 : Camille\_4
- Track 3 : DizzyRudy\_4, Damascus\_4
- Track 4 : JoyLin\_3, Yotsuba\_3
- Track 5 : Serenabean\_4, Daddyjeff\_4, AddiRose\_4
- Track 6 : Sweetclover\_4
- Track 7 : Eevee\_3
- Track 8 : Pippin15\_3

### ***Summary of Final Annotations (See graph section above for start numbers):***

The start number called the most often in the published annotations is 6, it was called in 12 of the 12 non-draft genes in the pham.

Genes that call this "Most Annotated" start:

- AddiRose\_4, Camille\_4, Count\_5, Daddyjeff\_4, Damascus\_4, DizzyRudy\_4, Eevee\_3, JoyLin\_3, Pippin15\_3, Serenabean\_4, Sweetclover\_4, Yotsuba\_3,

Genes that have the "Most Annotated" start but do not call it:

- 

Genes that do not have the "Most Annotated" start:

- 

### **Summary by start number:**

Start 6:

- Found in 12 of 12 ( 100.0% ) of genes in pham
- Manual Annotations of this start: 12 of 12
- Called 100.0% of time when present
- Phage (with cluster) where this start called: AddiRose\_4 (JA), Camille\_4 (EL), Count\_5 (EL), Daddyjeff\_4 (JA), Damascus\_4 (EL), DizzyRudy\_4 (EL), Eevee\_3 (JA), JoyLin\_3 (JA), Pippin15\_3 (JA), Serenabean\_4 (JA), Sweetclover\_4 (JA), Yotsuba\_3 (JA),

## Summary by clusters:

There are 2 clusters represented in this pham: EL, JA,

Info for manual annotations of cluster EL:

- Start number 6 was manually annotated 4 times for cluster EL.

Info for manual annotations of cluster JA:

- Start number 6 was manually annotated 8 times for cluster JA.

## Gene Information:

Gene: AddiRose\_4 Start: 1749, Stop: 1967, Start Num: 6

Candidate Starts for AddiRose\_4:

(Start: 6 @1749 has 12 MA's), (11, 1836), (13, 1866),

Gene: Camille\_4 Start: 1499, Stop: 1699, Start Num: 6

Candidate Starts for Camille\_4:

(Start: 6 @1499 has 12 MA's), (10, 1577),

Gene: Count\_5 Start: 1841, Stop: 2038, Start Num: 6

Candidate Starts for Count\_5:

(Start: 6 @1841 has 12 MA's), (12, 1946), (14, 2033),

Gene: Daddyjeff\_4 Start: 1748, Stop: 1966, Start Num: 6

Candidate Starts for Daddyjeff\_4:

(Start: 6 @1748 has 12 MA's), (11, 1835), (13, 1865),

Gene: Damascus\_4 Start: 1475, Stop: 1675, Start Num: 6

Candidate Starts for Damascus\_4:

(Start: 6 @1475 has 12 MA's), (7, 1526), (9, 1535),

Gene: DizzyRudy\_4 Start: 1475, Stop: 1675, Start Num: 6

Candidate Starts for DizzyRudy\_4:

(Start: 6 @1475 has 12 MA's), (7, 1526), (9, 1535),

Gene: Eevee\_3 Start: 1280, Stop: 1486, Start Num: 6

Candidate Starts for Eevee\_3:

(3, 1169), (4, 1181), (5, 1220), (Start: 6 @1280 has 12 MA's),

Gene: JoyLin\_3 Start: 1280, Stop: 1486, Start Num: 6

Candidate Starts for JoyLin\_3:

(3, 1169), (4, 1181), (5, 1220), (Start: 6 @1280 has 12 MA's), (12, 1388),

Gene: Pippin15\_3 Start: 1298, Stop: 1504, Start Num: 6

Candidate Starts for Pippin15\_3:

(1, 1058), (2, 1094), (3, 1187), (4, 1199), (5, 1238), (Start: 6 @1298 has 12 MA's), (8, 1355), (12, 1406),

Gene: Serenabean\_4 Start: 1748, Stop: 1966, Start Num: 6

Candidate Starts for Serenabean\_4:

(Start: 6 @1748 has 12 MA's), (11, 1835), (13, 1865),

Gene: Sweetclover\_4 Start: 1735, Stop: 1953, Start Num: 6

Candidate Starts for Sweetclover\_4:

(Start: 6 @1735 has 12 MA's), (12, 1843),

Gene: Yotsuba\_3 Start: 1280, Stop: 1486, Start Num: 6

Candidate Starts for Yotsuba\_3:

(3, 1169), (4, 1181), (5, 1220), (Start: 6 @1280 has 12 MA's), (12, 1388),