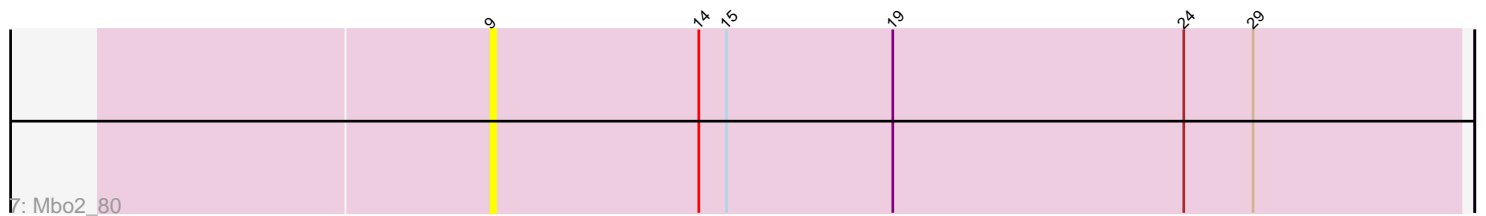
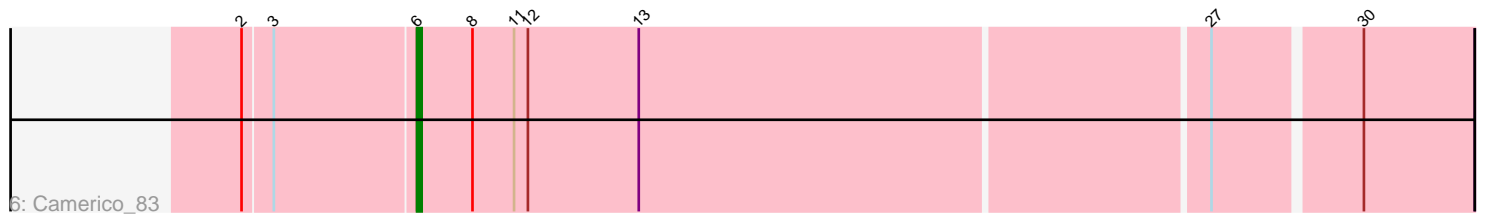
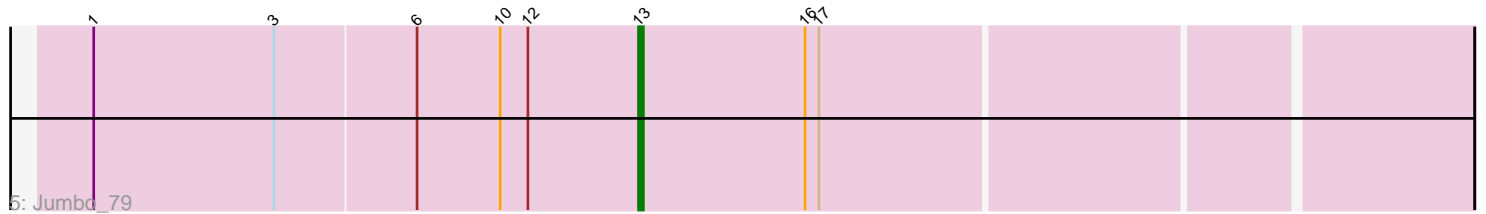
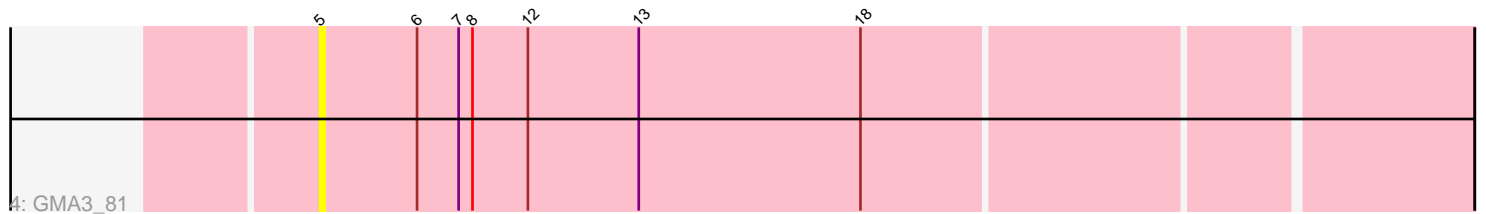
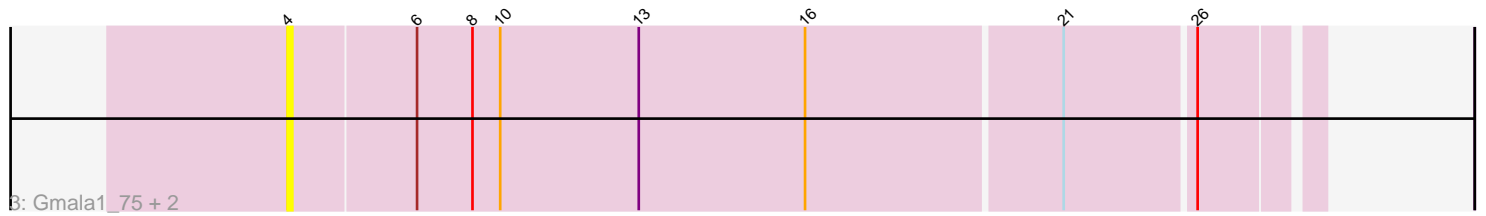
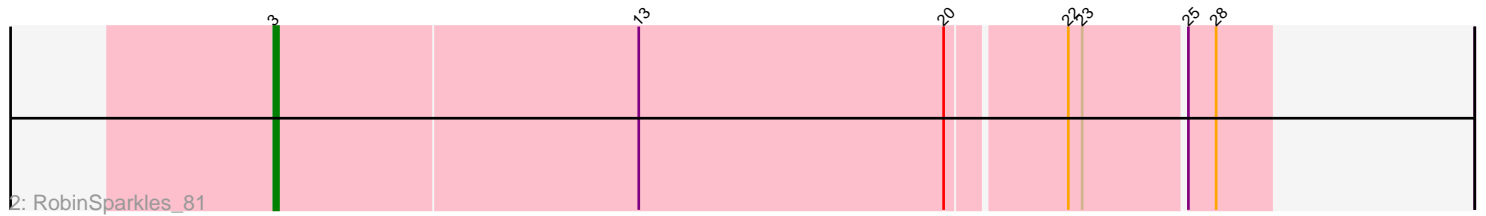
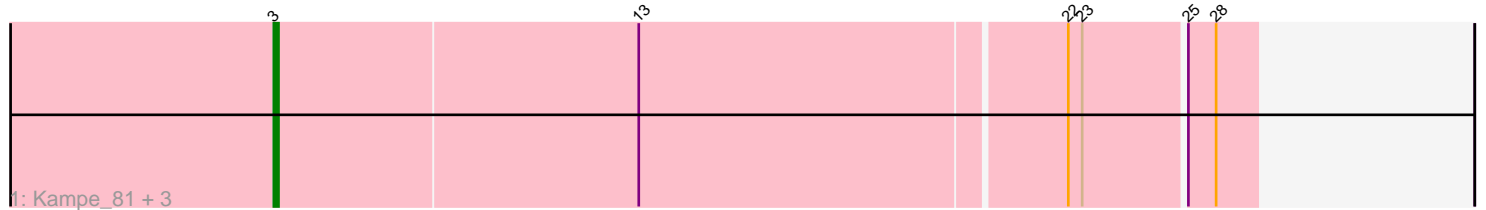


# Pham 281071



Note: Tracks are now grouped by subcluster and scaled. Switching in subcluster is indicated by changes in track color. Track scale is now set by default to display the region 30 bp upstream of start 1 to 30 bp downstream of the last possible start. If this default region is judged to be packed too tightly with annotated starts, the track will be further scaled to only show that region of the ORF with annotated starts. This action will be indicated by adding "Zoomed" to the title. For starts, yellow indicates the location of called starts comprised solely of Glimmer/GeneMark auto-annotations, green indicates the location of called starts with at least 1 manual gene annotation.

## Pham 281071 Report

This analysis was run 02/07/26 on database version 634.

Pham number 281071 has 12 members, 5 are drafts.

Phages represented in each track:

- Track 1 : Kampe\_81, PatrickStar\_81, Gibbles\_77, Orchid\_80
- Track 2 : RobinSparkles\_81
- Track 3 : Gmala1\_75, GordDuk1\_82, GordTnk2\_82
- Track 4 : GMA3\_81
- Track 5 : Jumbo\_79
- Track 6 : Camerico\_83
- Track 7 : Mbo2\_80

### ***Summary of Final Annotations (See graph section above for start numbers):***

The start number called the most often in the published annotations is 3, it was called in 5 of the 7 non-draft genes in the pham.

Genes that call this "Most Annotated" start:

- Gibbles\_77, Kampe\_81, Orchid\_80, PatrickStar\_81, RobinSparkles\_81,

Genes that have the "Most Annotated" start but do not call it:

- Camerico\_83, Jumbo\_79,

Genes that do not have the "Most Annotated" start:

- GMA3\_81, Gmala1\_75, GordDuk1\_82, GordTnk2\_82, Mbo2\_80,

### **Summary by start number:**

Start 3:

- Found in 7 of 12 ( 58.3% ) of genes in pham
- Manual Annotations of this start: 5 of 7
- Called 71.4% of time when present
- Phage (with cluster) where this start called: Gibbles\_77 (CX), Kampe\_81 (CX), Orchid\_80 (CX), PatrickStar\_81 (CX), RobinSparkles\_81 (CX),

Start 4:

- Found in 3 of 12 ( 25.0% ) of genes in pham
- No Manual Annotations of this start.

- Called 100.0% of time when present
- Phage (with cluster) where this start called: Gmala1\_75 (DF1), GordDuk1\_82 (DF1), GordTnk2\_82 (DF1),

Start 5:

- Found in 1 of 12 ( 8.3% ) of genes in pham
- No Manual Annotations of this start.
- Called 100.0% of time when present
- Phage (with cluster) where this start called: GMA3\_81 (DF2),

Start 6:

- Found in 6 of 12 ( 50.0% ) of genes in pham
- Manual Annotations of this start: 1 of 7
- Called 16.7% of time when present
- Phage (with cluster) where this start called: Camerico\_83 (DF4),

Start 9:

- Found in 1 of 12 ( 8.3% ) of genes in pham
- No Manual Annotations of this start.
- Called 100.0% of time when present
- Phage (with cluster) where this start called: Mbo2\_80 (singleton),

Start 13:

- Found in 11 of 12 ( 91.7% ) of genes in pham
- Manual Annotations of this start: 1 of 7
- Called 9.1% of time when present
- Phage (with cluster) where this start called: Jumbo\_79 (DF3),

### **Summary by clusters:**

There are 6 clusters represented in this pham: singleton, DF4, DF1, DF3, DF2, CX,

Info for manual annotations of cluster CX:

- Start number 3 was manually annotated 5 times for cluster CX.

Info for manual annotations of cluster DF3:

- Start number 13 was manually annotated 1 time for cluster DF3.

Info for manual annotations of cluster DF4:

- Start number 6 was manually annotated 1 time for cluster DF4.

### **Gene Information:**

Gene: Camerico\_83 Start: 64652, Stop: 64431, Start Num: 6

Candidate Starts for Camerico\_83:

(2, 64688), (Start: 3 @64682 has 5 MA's), (Start: 6 @64652 has 1 MA's), (8, 64640), (11, 64631), (12, 64628), (Start: 13 @64604 has 1 MA's), (27, 64484), (30, 64454),

Gene: GMA3\_81 Start: 60351, Stop: 60109, Start Num: 5

Candidate Starts for GMA3\_81:

(5, 60351), (Start: 6 @60330 has 1 MA's), (7, 60321), (8, 60318), (12, 60306), (Start: 13 @60282 has 1 MA's), (18, 60234),

Gene: Gibbles\_77 Start: 59828, Stop: 59622, Start Num: 3

Candidate Starts for Gibbles\_77:

(Start: 3 @59828 has 5 MA's), (Start: 13 @59750 has 1 MA's), (22, 59660), (23, 59657), (25, 59636), (28, 59630),

Gene: Gmala1\_75 Start: 58760, Stop: 58545, Start Num: 4

Candidate Starts for Gmala1\_75:

(4, 58760), (Start: 6 @58733 has 1 MA's), (8, 58721), (10, 58715), (Start: 13 @58685 has 1 MA's), (16, 58649), (21, 58595), (26, 58568),

Gene: GordDuk1\_82 Start: 59550, Stop: 59335, Start Num: 4

Candidate Starts for GordDuk1\_82:

(4, 59550), (Start: 6 @59523 has 1 MA's), (8, 59511), (10, 59505), (Start: 13 @59475 has 1 MA's), (16, 59439), (21, 59385), (26, 59358),

Gene: GordTnk2\_82 Start: 59480, Stop: 59265, Start Num: 4

Candidate Starts for GordTnk2\_82:

(4, 59480), (Start: 6 @59453 has 1 MA's), (8, 59441), (10, 59435), (Start: 13 @59405 has 1 MA's), (16, 59369), (21, 59315), (26, 59288),

Gene: Jumbo\_79 Start: 63375, Stop: 63202, Start Num: 13

Candidate Starts for Jumbo\_79:

(1, 63492), (Start: 3 @63453 has 5 MA's), (Start: 6 @63423 has 1 MA's), (10, 63405), (12, 63399), (Start: 13 @63375 has 1 MA's), (16, 63339), (17, 63336),

Gene: Kampe\_81 Start: 60098, Stop: 59892, Start Num: 3

Candidate Starts for Kampe\_81:

(Start: 3 @60098 has 5 MA's), (Start: 13 @60020 has 1 MA's), (22, 59930), (23, 59927), (25, 59906), (28, 59900),

Gene: Mbo2\_80 Start: 56528, Stop: 56319, Start Num: 9

Candidate Starts for Mbo2\_80:

(9, 56528), (14, 56483), (15, 56477), (19, 56441), (24, 56378), (29, 56363),

Gene: Orchid\_80 Start: 60099, Stop: 59893, Start Num: 3

Candidate Starts for Orchid\_80:

(Start: 3 @60099 has 5 MA's), (Start: 13 @60021 has 1 MA's), (22, 59931), (23, 59928), (25, 59907), (28, 59901),

Gene: PatrickStar\_81 Start: 60098, Stop: 59892, Start Num: 3

Candidate Starts for PatrickStar\_81:

(Start: 3 @60098 has 5 MA's), (Start: 13 @60020 has 1 MA's), (22, 59930), (23, 59927), (25, 59906), (28, 59900),

Gene: RobinSparkles\_81 Start: 59913, Stop: 59704, Start Num: 3

Candidate Starts for RobinSparkles\_81:

(Start: 3 @59913 has 5 MA's), (Start: 13 @59835 has 1 MA's), (20, 59769), (22, 59745), (23, 59742), (25, 59721), (28, 59715),