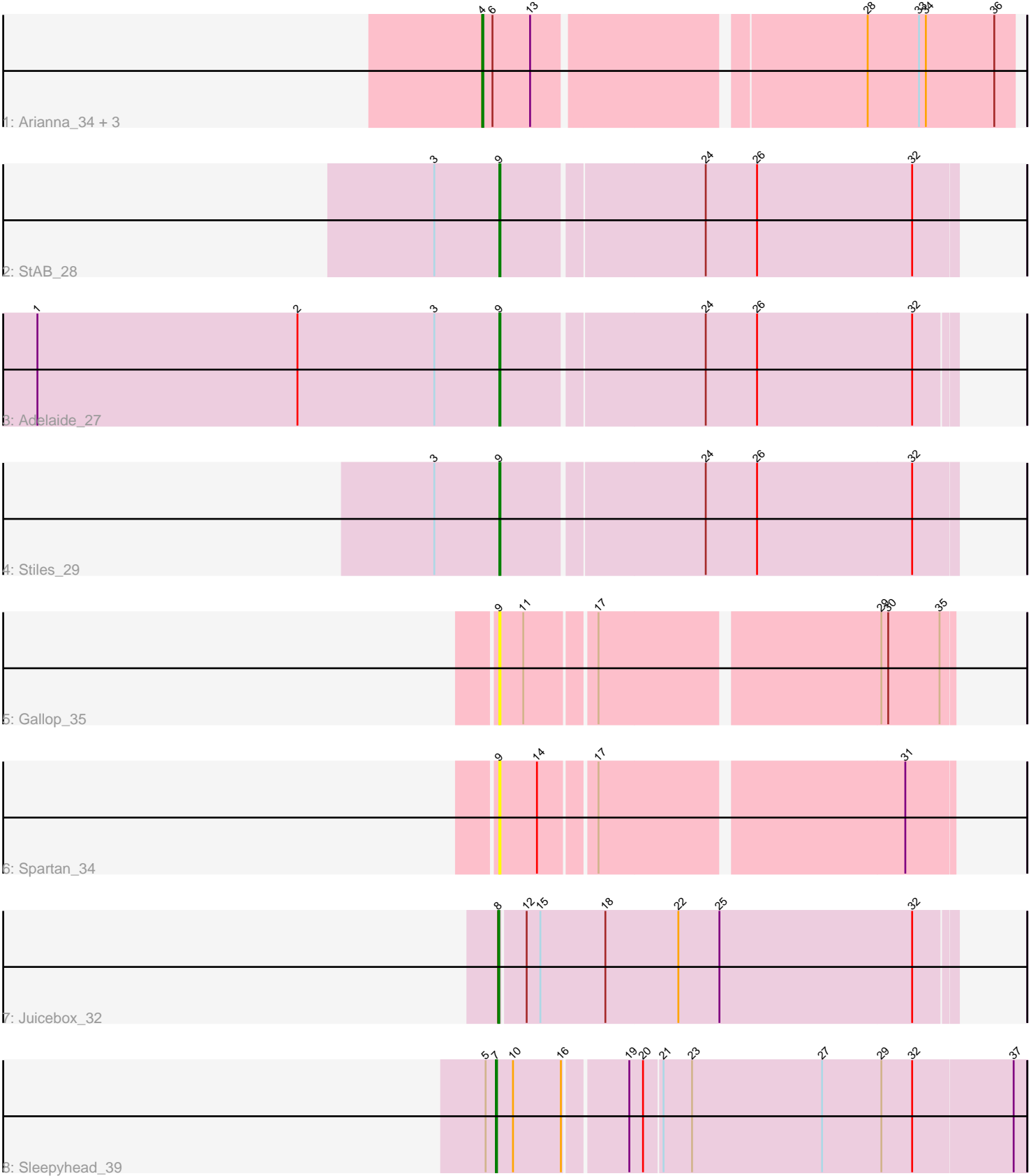


Pham 281080



Note: Tracks are now grouped by subcluster and scaled. Switching in subcluster is indicated by changes in track color. Track scale is now set by default to display the region 30 bp upstream of start 1 to 30 bp downstream of the last possible start. If this default region is judged to be packed too tightly with annotated starts, the track will be further scaled to only show that region of the ORF with annotated starts. This action will be indicated by adding "Zoomed" to the title. For starts, yellow indicates the location of called starts comprised solely of Glimmer/GeneMark auto-annotations, green indicates the location of called starts with at least 1 manual gene annotation.

Pham 281080 Report

This analysis was run 02/07/26 on database version 634.

Pham number 281080 has 11 members, 2 are drafts.

Phages represented in each track:

- Track 1 : Arianna_34, Poushou_34, TouchMeNot_34, Colleen_34
- Track 2 : StAB_28
- Track 3 : Adelaide_27
- Track 4 : Stiles_29
- Track 5 : Gallop_35
- Track 6 : Spartan_34
- Track 7 : Juicebox_32
- Track 8 : Sleepyhead_39

Summary of Final Annotations (See graph section above for start numbers):

The start number called the most often in the published annotations is 4, it was called in 4 of the 9 non-draft genes in the pham.

Genes that call this "Most Annotated" start:

- Arianna_34, Colleen_34, Poushou_34, TouchMeNot_34,

Genes that have the "Most Annotated" start but do not call it:

-

Genes that do not have the "Most Annotated" start:

- Adelaide_27, Gallop_35, Juicebox_32, Sleepyhead_39, Spartan_34, StAB_28, Stiles_29,

Summary by start number:

Start 4:

- Found in 4 of 11 (36.4%) of genes in pham
- Manual Annotations of this start: 4 of 9
- Called 100.0% of time when present
- Phage (with cluster) where this start called: Arianna_34 (EO), Colleen_34 (EO), Poushou_34 (EO), TouchMeNot_34 (EO),

Start 7:

- Found in 1 of 11 (9.1%) of genes in pham
- Manual Annotations of this start: 1 of 9
- Called 100.0% of time when present
- Phage (with cluster) where this start called: Sleepyhead_39 (singleton),

Start 8:

- Found in 1 of 11 (9.1%) of genes in pham
- Manual Annotations of this start: 1 of 9
- Called 100.0% of time when present
- Phage (with cluster) where this start called: Juicebox_32 (singleton),

Start 9:

- Found in 5 of 11 (45.5%) of genes in pham
- Manual Annotations of this start: 3 of 9
- Called 100.0% of time when present
- Phage (with cluster) where this start called: Adelaide_27 (EP), Gallop_35 (ES), Spartan_34 (ES), StAB_28 (EP), Stiles_29 (EP),

Summary by clusters:

There are 4 clusters represented in this pham: EO, EP, ES, singleton,

Info for manual annotations of cluster EO:

- Start number 4 was manually annotated 4 times for cluster EO.

Info for manual annotations of cluster EP:

- Start number 9 was manually annotated 3 times for cluster EP.

Gene Information:

Gene: Adelaide_27 Start: 25237, Stop: 24851, Start Num: 9

Candidate Starts for Adelaide_27:

(1, 25642), (2, 25414), (3, 25294), (Start: 9 @25237 has 3 MA's), (24, 25066), (26, 25021), (32, 24886),

Gene: Arianna_34 Start: 32062, Stop: 31622, Start Num: 4

Candidate Starts for Arianna_34:

(Start: 4 @32062 has 4 MA's), (6, 32053), (13, 32020), (28, 31750), (33, 31705), (34, 31699), (36, 31639),

Gene: Colleen_34 Start: 32062, Stop: 31622, Start Num: 4

Candidate Starts for Colleen_34:

(Start: 4 @32062 has 4 MA's), (6, 32053), (13, 32020), (28, 31750), (33, 31705), (34, 31699), (36, 31639),

Gene: Gallop_35 Start: 29321, Stop: 28947, Start Num: 9

Candidate Starts for Gallop_35:

(Start: 9 @29321 has 3 MA's), (11, 29300), (17, 29243), (29, 29009), (30, 29003), (35, 28958),

Gene: Juicebox_32 Start: 28059, Stop: 27667, Start Num: 8

Candidate Starts for Juicebox_32:

(Start: 8 @28059 has 1 MA's), (12, 28038), (15, 28026), (18, 27969), (22, 27906), (25, 27870), (32, 27702),

Gene: Poushou_34 Start: 31891, Stop: 31451, Start Num: 4

Candidate Starts for Poushou_34:

(Start: 4 @31891 has 4 MA's), (6, 31882), (13, 31849), (28, 31579), (33, 31534), (34, 31528), (36, 31468),

Gene: Sleepyhead_39 Start: 29869, Stop: 29420, Start Num: 7

Candidate Starts for Sleepyhead_39:

(5, 29878), (Start: 7 @29869 has 1 MA's), (10, 29854), (16, 29812), (19, 29761), (20, 29749), (21, 29734), (23, 29710), (27, 29596), (29, 29545), (32, 29518), (37, 29431),

Gene: Spartan_34 Start: 31577, Stop: 31203, Start Num: 9

Candidate Starts for Spartan_34:

(Start: 9 @31577 has 3 MA's), (14, 31544), (17, 31499), (31, 31244),

Gene: StAB_28 Start: 26487, Stop: 26098, Start Num: 9

Candidate Starts for StAB_28:

(3, 26544), (Start: 9 @26487 has 3 MA's), (24, 26316), (26, 26271), (32, 26136),

Gene: Stiles_29 Start: 26031, Stop: 25642, Start Num: 9

Candidate Starts for Stiles_29:

(3, 26088), (Start: 9 @26031 has 3 MA's), (24, 25860), (26, 25815), (32, 25680),

Gene: TouchMeNot_34 Start: 32062, Stop: 31622, Start Num: 4

Candidate Starts for TouchMeNot_34:

(Start: 4 @32062 has 4 MA's), (6, 32053), (13, 32020), (28, 31750), (33, 31705), (34, 31699), (36, 31639),