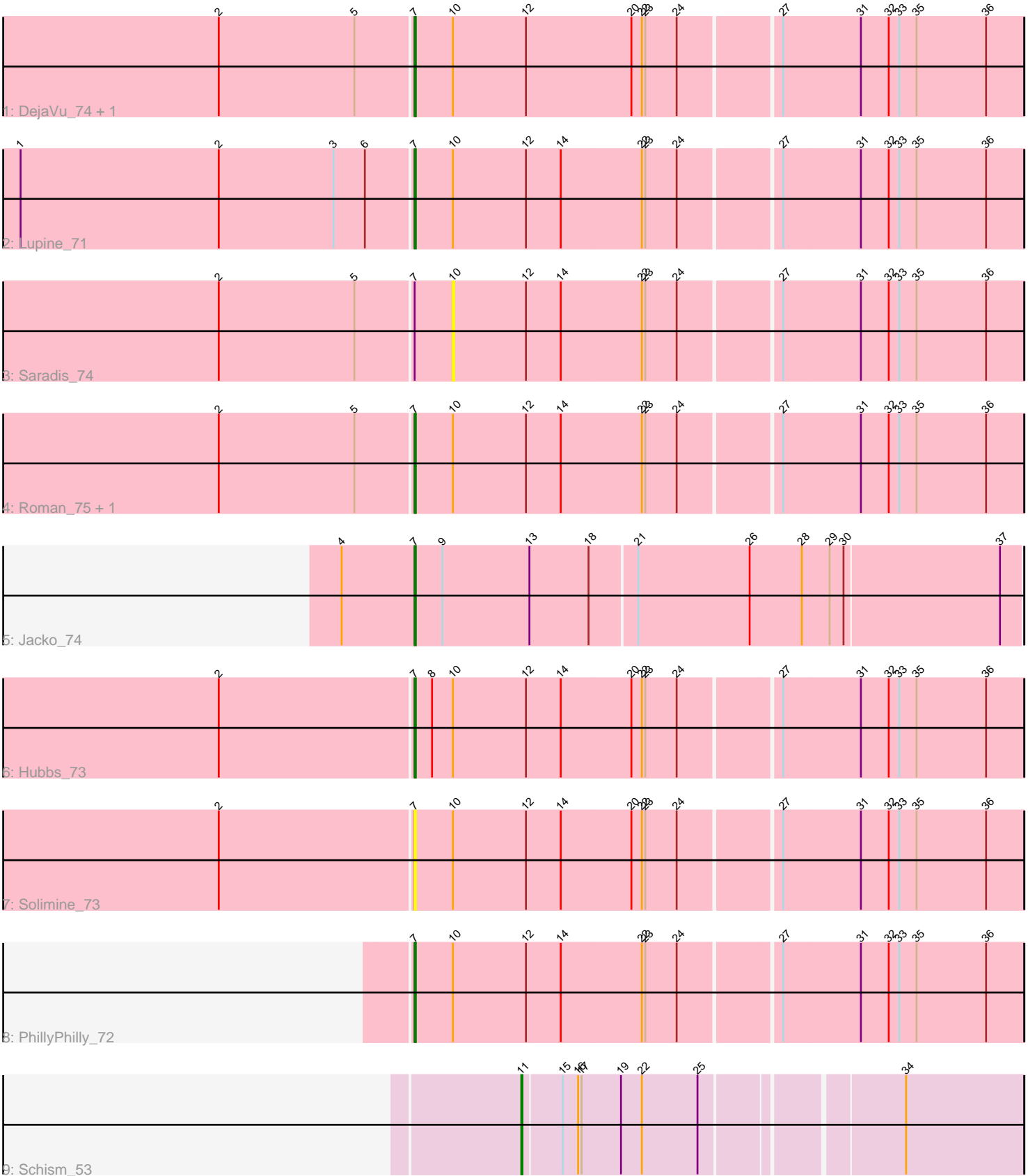


Pham 281089



Note: Tracks are now grouped by subcluster and scaled. Switching in subcluster is indicated by changes in track color. Track scale is now set by default to display the region 30 bp upstream of start 1 to 30 bp downstream of the last possible start. If this default region is judged to be packed too tightly with annotated starts, the track will be further scaled to only show that region of the ORF with annotated starts. This action will be indicated by adding "Zoomed" to the title. For starts, yellow indicates the location of called starts comprised solely of Glimmer/GeneMark auto-annotations, green indicates the location of called starts with at least 1 manual gene annotation.

Pham 281089 Report

This analysis was run 02/07/26 on database version 634.

Pham number 281089 has 11 members, 3 are drafts.

Phages represented in each track:

- Track 1 : DejaVu_74, Uterion_76
- Track 2 : Lupine_71
- Track 3 : Saradis_74
- Track 4 : Roman_75, Pavlo_72
- Track 5 : Jacko_74
- Track 6 : Hubbs_73
- Track 7 : Solimine_73
- Track 8 : PhillyPhilly_72
- Track 9 : Schism_53

Summary of Final Annotations (See graph section above for start numbers):

The start number called the most often in the published annotations is 7, it was called in 7 of the 8 non-draft genes in the pham.

Genes that call this "Most Annotated" start:

- DejaVu_74, Hubbs_73, Jacko_74, Lupine_71, Pavlo_72, PhillyPhilly_72, Roman_75, Solimine_73, Uterion_76,

Genes that have the "Most Annotated" start but do not call it:

- Saradis_74,

Genes that do not have the "Most Annotated" start:

- Schism_53,

Summary by start number:

Start 7:

- Found in 10 of 11 (90.9%) of genes in pham
- Manual Annotations of this start: 7 of 8
- Called 90.0% of time when present
- Phage (with cluster) where this start called: DejaVu_74 (ED1), Hubbs_73 (ED1), Jacko_74 (ED1), Lupine_71 (ED1), Pavlo_72 (ED1), PhillyPhilly_72 (ED1), Roman_75 (ED1), Solimine_73 (ED1), Uterion_76 (ED1),

Start 10:

- Found in 9 of 11 (81.8%) of genes in pham
- No Manual Annotations of this start.
- Called 11.1% of time when present
- Phage (with cluster) where this start called: Saradis_74 (ED1),

Start 11:

- Found in 1 of 11 (9.1%) of genes in pham
- Manual Annotations of this start: 1 of 8
- Called 100.0% of time when present
- Phage (with cluster) where this start called: Schism_53 (FF),

Summary by clusters:

There are 2 clusters represented in this pham: ED1, FF,

Info for manual annotations of cluster ED1:

- Start number 7 was manually annotated 7 times for cluster ED1.

Info for manual annotations of cluster FF:

- Start number 11 was manually annotated 1 time for cluster FF.

Gene Information:

Gene: DejaVu_74 Start: 44871, Stop: 44359, Start Num: 7

Candidate Starts for DejaVu_74:

(2, 45036), (5, 44919), (Start: 7 @44871 has 7 MA's), (10, 44838), (12, 44775), (20, 44685), (22, 44676), (23, 44673), (24, 44646), (27, 44565), (31, 44499), (32, 44475), (33, 44466), (35, 44451), (36, 44391),

Gene: Hubbs_73 Start: 45099, Stop: 44587, Start Num: 7

Candidate Starts for Hubbs_73:

(2, 45264), (Start: 7 @45099 has 7 MA's), (8, 45084), (10, 45066), (12, 45003), (14, 44973), (20, 44913), (22, 44904), (23, 44901), (24, 44874), (27, 44793), (31, 44727), (32, 44703), (33, 44694), (35, 44679), (36, 44619),

Gene: Jacko_74 Start: 44135, Stop: 43620, Start Num: 7

Candidate Starts for Jacko_74:

(4, 44198), (Start: 7 @44135 has 7 MA's), (9, 44111), (13, 44036), (18, 43985), (21, 43946), (26, 43850), (28, 43805), (29, 43781), (30, 43769), (37, 43637),

Gene: Lupine_71 Start: 44285, Stop: 43773, Start Num: 7

Candidate Starts for Lupine_71:

(1, 44621), (2, 44450), (3, 44351), (6, 44324), (Start: 7 @44285 has 7 MA's), (10, 44252), (12, 44189), (14, 44159), (22, 44090), (23, 44087), (24, 44060), (27, 43979), (31, 43913), (32, 43889), (33, 43880), (35, 43865), (36, 43805),

Gene: Pavlo_72 Start: 44930, Stop: 44418, Start Num: 7

Candidate Starts for Pavlo_72:

(2, 45095), (5, 44978), (Start: 7 @44930 has 7 MA's), (10, 44897), (12, 44834), (14, 44804), (22, 44735), (23, 44732), (24, 44705), (27, 44624), (31, 44558), (32, 44534), (33, 44525), (35, 44510), (36, 44450),

Gene: PhillyPhilly_72 Start: 44464, Stop: 43952, Start Num: 7

Candidate Starts for PhillyPhilly_72:

(Start: 7 @44464 has 7 MA's), (10, 44431), (12, 44368), (14, 44338), (22, 44269), (23, 44266), (24, 44239), (27, 44158), (31, 44092), (32, 44068), (33, 44059), (35, 44044), (36, 43984),

Gene: Roman_75 Start: 45585, Stop: 45073, Start Num: 7

Candidate Starts for Roman_75:

(2, 45750), (5, 45633), (Start: 7 @45585 has 7 MA's), (10, 45552), (12, 45489), (14, 45459), (22, 45390), (23, 45387), (24, 45360), (27, 45279), (31, 45213), (32, 45189), (33, 45180), (35, 45165), (36, 45105),

Gene: Saradis_74 Start: 44513, Stop: 44034, Start Num: 10

Candidate Starts for Saradis_74:

(2, 44711), (5, 44594), (Start: 7 @44546 has 7 MA's), (10, 44513), (12, 44450), (14, 44420), (22, 44351), (23, 44348), (24, 44321), (27, 44240), (31, 44174), (32, 44150), (33, 44141), (35, 44126), (36, 44066),

Gene: Schism_53 Start: 34682, Stop: 35089, Start Num: 11

Candidate Starts for Schism_53:

(Start: 11 @34682 has 1 MA's), (15, 34715), (16, 34727), (17, 34730), (19, 34763), (22, 34781), (25, 34829), (34, 34988),

Gene: Solimine_73 Start: 44899, Stop: 44387, Start Num: 7

Candidate Starts for Solimine_73:

(2, 45064), (Start: 7 @44899 has 7 MA's), (10, 44866), (12, 44803), (14, 44773), (20, 44713), (22, 44704), (23, 44701), (24, 44674), (27, 44593), (31, 44527), (32, 44503), (33, 44494), (35, 44479), (36, 44419),

Gene: Uterion_76 Start: 45032, Stop: 44520, Start Num: 7

Candidate Starts for Uterion_76:

(2, 45197), (5, 45080), (Start: 7 @45032 has 7 MA's), (10, 44999), (12, 44936), (20, 44846), (22, 44837), (23, 44834), (24, 44807), (27, 44726), (31, 44660), (32, 44636), (33, 44627), (35, 44612), (36, 44552),