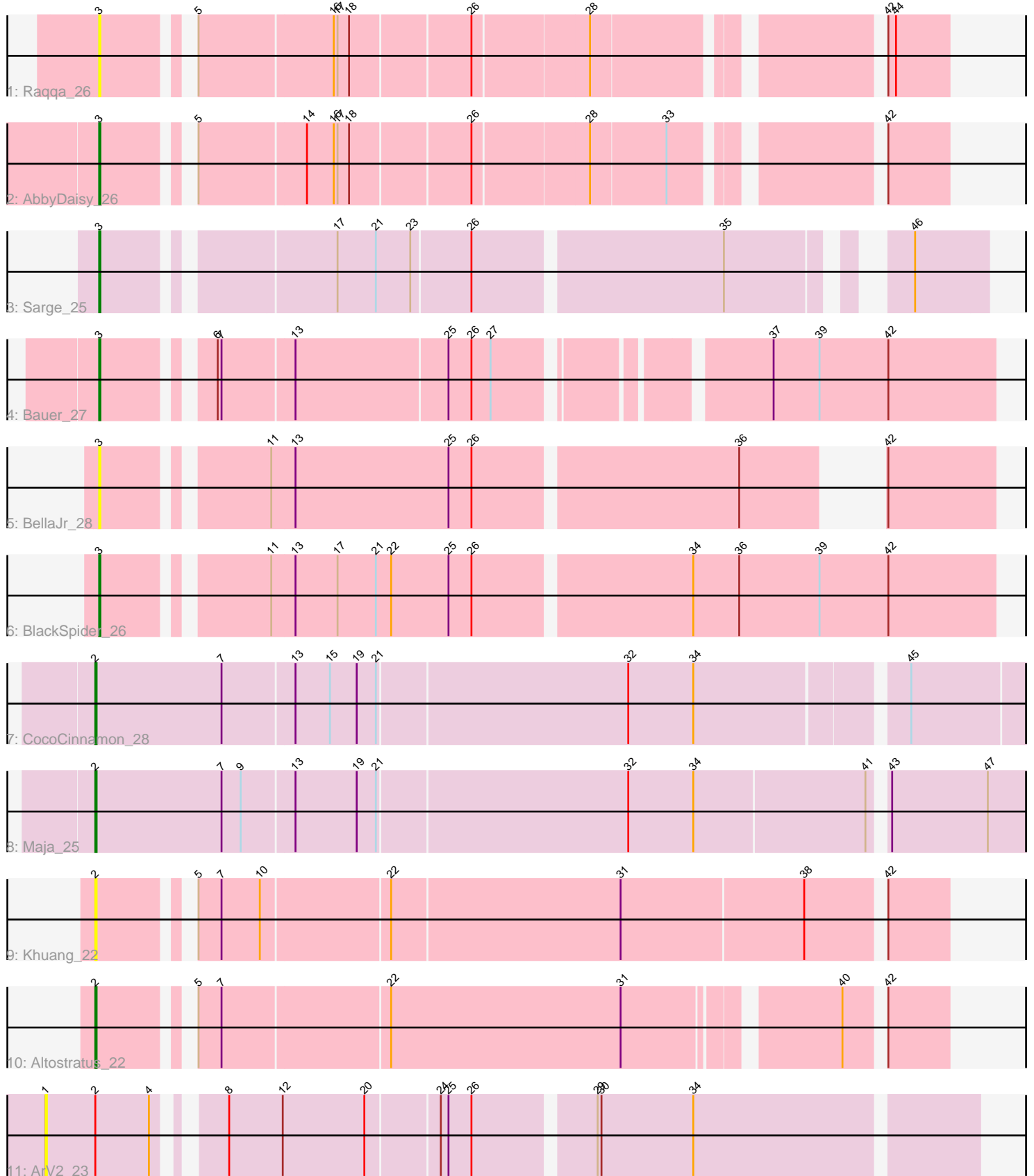


Pham 281100



Note: Tracks are now grouped by subcluster and scaled. Switching in subcluster is indicated by changes in track color. Track scale is now set by default to display the region 30 bp upstream of start 1 to 30 bp downstream of the last possible start. If this default region is judged to be packed too tightly with annotated starts, the track will be further scaled to only show that region of the ORF with annotated starts. This action will be indicated by adding "Zoomed" to the title. For starts, yellow indicates the location of called starts comprised solely of Glimmer/GeneMark auto-annotations, green indicates the location of called starts with at least 1 manual gene annotation.

Pham 281100 Report

This analysis was run 02/07/26 on database version 634.

Pham number 281100 has 11 members, 4 are drafts.

Phages represented in each track:

- Track 1 : Raqqa_26
- Track 2 : AbbyDaisy_26
- Track 3 : Sarge_25
- Track 4 : Bauer_27
- Track 5 : BellaJr_28
- Track 6 : BlackSpider_26
- Track 7 : CocoCinnamon_28
- Track 8 : Maja_25
- Track 9 : Khuang_22
- Track 10 : Altostratus_22
- Track 11 : ArV2_23

Summary of Final Annotations (See graph section above for start numbers):

The start number called the most often in the published annotations is 3, it was called in 4 of the 7 non-draft genes in the pham.

Genes that call this "Most Annotated" start:

- AbbyDaisy_26, Bauer_27, BellaJr_28, BlackSpider_26, Raqqa_26, Sarge_25,

Genes that have the "Most Annotated" start but do not call it:

-

Genes that do not have the "Most Annotated" start:

- Altostratus_22, ArV2_23, CocoCinnamon_28, Khuang_22, Maja_25,

Summary by start number:

Start 1:

- Found in 1 of 11 (9.1%) of genes in pham
- No Manual Annotations of this start.
- Called 100.0% of time when present
- Phage (with cluster) where this start called: ArV2_23 (singleton),

Start 2:

- Found in 5 of 11 (45.5%) of genes in pham
- Manual Annotations of this start: 3 of 7
- Called 80.0% of time when present
- Phage (with cluster) where this start called: Altostratus_22 (FS), CocoCinnamon_28 (FO), Khuang_22 (FS), Maja_25 (FO),

Start 3:

- Found in 6 of 11 (54.5%) of genes in pham
- Manual Annotations of this start: 4 of 7
- Called 100.0% of time when present
- Phage (with cluster) where this start called: AbbyDaisy_26 (AY), Bauer_27 (FN), BellaJr_28 (FN), BlackSpider_26 (FN), Raqqa_26 (AY), Sarge_25 (FB),

Summary by clusters:

There are 6 clusters represented in this pham: singleton, FS, FB, AY, FN, FO,

Info for manual annotations of cluster AY:

- Start number 3 was manually annotated 1 time for cluster AY.

Info for manual annotations of cluster FB:

- Start number 3 was manually annotated 1 time for cluster FB.

Info for manual annotations of cluster FN:

- Start number 3 was manually annotated 2 times for cluster FN.

Info for manual annotations of cluster FO:

- Start number 2 was manually annotated 2 times for cluster FO.

Info for manual annotations of cluster FS:

- Start number 2 was manually annotated 1 time for cluster FS.

Gene Information:

Gene: AbbyDaisy_26 Start: 19872, Stop: 20456, Start Num: 3

Candidate Starts for AbbyDaisy_26:

(Start: 3 @19872 has 4 MA's), (5, 19926), (14, 20007), (16, 20028), (17, 20031), (18, 20040), (26, 20130), (28, 20217), (33, 20274), (42, 20409),

Gene: Altostratus_22 Start: 17919, Stop: 18521, Start Num: 2

Candidate Starts for Altostratus_22:

(Start: 2 @17919 has 3 MA's), (5, 17976), (7, 17994), (22, 18120), (31, 18300), (40, 18450), (42, 18474),

Gene: ArV2_23 Start: 18080, Stop: 18754, Start Num: 1

Candidate Starts for ArV2_23:

(1, 18080), (Start: 2 @18119 has 3 MA's), (4, 18161), (8, 18197), (12, 18239), (20, 18302), (24, 18356), (25, 18362), (26, 18380), (29, 18467), (30, 18470), (34, 18542),

Gene: Bauer_27 Start: 20577, Stop: 21209, Start Num: 3

Candidate Starts for Bauer_27:

(Start: 3 @20577 has 4 MA's), (6, 20646), (7, 20649), (13, 20703), (25, 20820), (26, 20838), (27, 20853), (37, 21036), (39, 21072), (42, 21126),

Gene: BellaJr_28 Start: 21576, Stop: 22187, Start Num: 3

Candidate Starts for BellaJr_28:

(Start: 3 @21576 has 4 MA's), (11, 21687), (13, 21705), (25, 21825), (26, 21843), (36, 22041), (42, 22104),

Gene: BlackSpider_26 Start: 20434, Stop: 21099, Start Num: 3

Candidate Starts for BlackSpider_26:

(Start: 3 @20434 has 4 MA's), (11, 20545), (13, 20563), (17, 20596), (21, 20626), (22, 20638), (25, 20683), (26, 20701), (34, 20863), (36, 20899), (39, 20962), (42, 21016),

Gene: CocoCinnamon_28 Start: 20280, Stop: 21011, Start Num: 2

Candidate Starts for CocoCinnamon_28:

(Start: 2 @20280 has 3 MA's), (7, 20379), (13, 20433), (15, 20460), (19, 20481), (21, 20496), (32, 20688), (34, 20739), (45, 20892),

Gene: Khuang_22 Start: 17994, Stop: 18614, Start Num: 2

Candidate Starts for Khuang_22:

(Start: 2 @17994 has 3 MA's), (5, 18051), (7, 18069), (10, 18099), (22, 18195), (31, 18372), (38, 18513), (42, 18567),

Gene: Maja_25 Start: 19125, Stop: 19856, Start Num: 2

Candidate Starts for Maja_25:

(Start: 2 @19125 has 3 MA's), (7, 19224), (9, 19239), (13, 19278), (19, 19326), (21, 19341), (32, 19533), (34, 19584), (41, 19716), (43, 19725), (47, 19800),

Gene: Raqqa_26 Start: 20163, Stop: 20747, Start Num: 3

Candidate Starts for Raqqa_26:

(Start: 3 @20163 has 4 MA's), (5, 20217), (16, 20319), (17, 20322), (18, 20331), (26, 20421), (28, 20508), (42, 20700), (44, 20706),

Gene: Sarge_25 Start: 18543, Stop: 19154, Start Num: 3

Candidate Starts for Sarge_25:

(Start: 3 @18543 has 4 MA's), (17, 18702), (21, 18732), (23, 18759), (26, 18804), (35, 18990), (46, 19098),