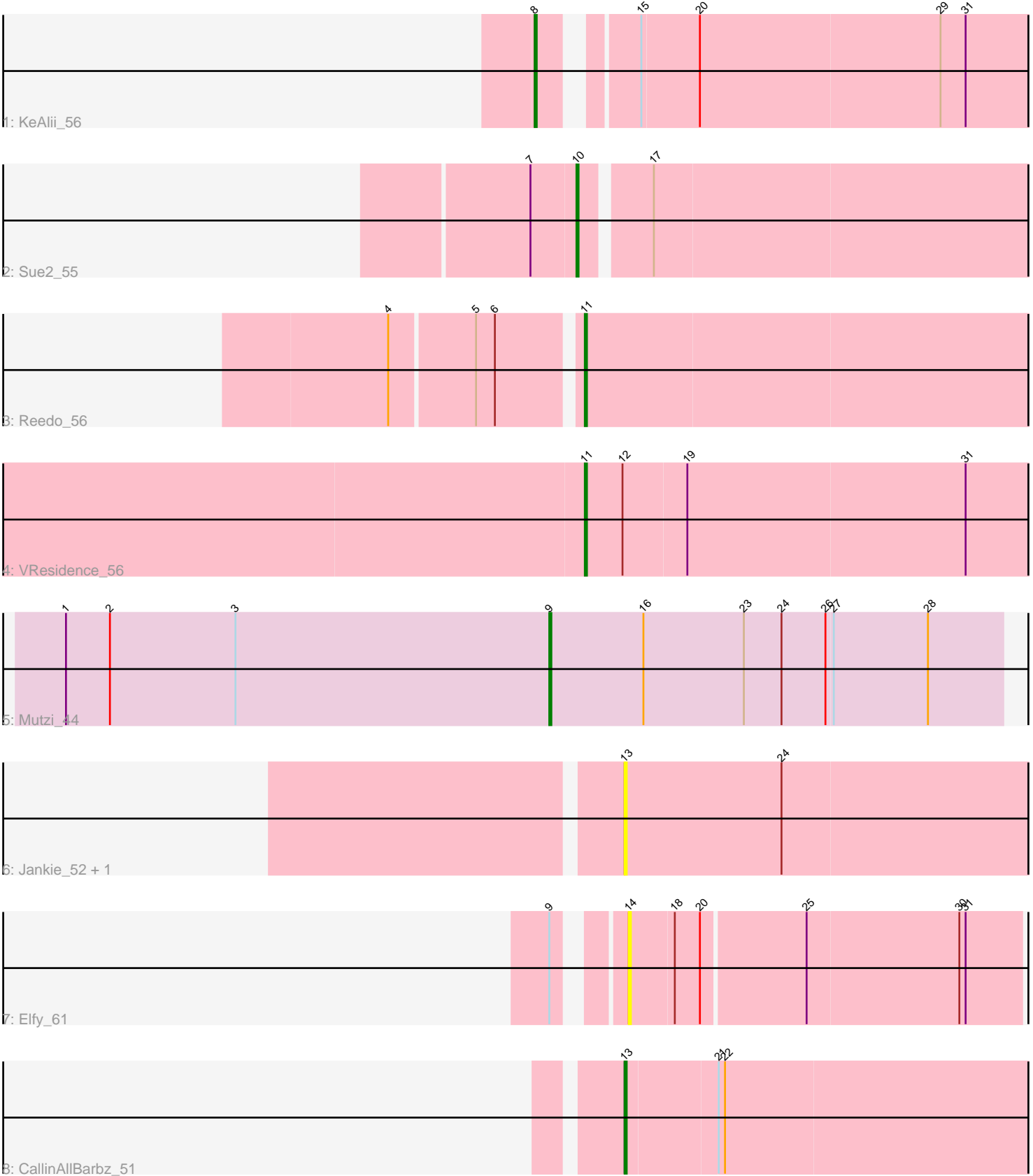


Pham 281147



Note: Tracks are now grouped by subcluster and scaled. Switching in subcluster is indicated by changes in track color. Track scale is now set by default to display the region 30 bp upstream of start 1 to 30 bp downstream of the last possible start. If this default region is judged to be packed too tightly with annotated starts, the track will be further scaled to only show that region of the ORF with annotated starts. This action will be indicated by adding "Zoomed" to the title. For starts, yellow indicates the location of called starts comprised solely of Glimmer/GeneMark auto-annotations, green indicates the location of called starts with at least 1 manual gene annotation.

## Pham 281147 Report

This analysis was run 02/07/26 on database version 634.

Pham number 281147 has 9 members, 3 are drafts.

Phages represented in each track:

- Track 1 : KeAlii\_56
- Track 2 : Sue2\_55
- Track 3 : Reedo\_56
- Track 4 : VResidence\_56
- Track 5 : Mutzi\_44
- Track 6 : Jankie\_52, GrimEater\_50
- Track 7 : Elfy\_61
- Track 8 : CallinAllBarbz\_51

### ***Summary of Final Annotations (See graph section above for start numbers):***

The start number called the most often in the published annotations is 11, it was called in 2 of the 6 non-draft genes in the pham.

Genes that call this "Most Annotated" start:

- Reedo\_56, VResidence\_56,

Genes that have the "Most Annotated" start but do not call it:

- 

Genes that do not have the "Most Annotated" start:

- CallinAllBarbz\_51, Elfy\_61, GrimEater\_50, Jankie\_52, KeAlii\_56, Mutzi\_44, Sue2\_55,

### **Summary by start number:**

Start 8:

- Found in 1 of 9 ( 11.1% ) of genes in pham
- Manual Annotations of this start: 1 of 6
- Called 100.0% of time when present
- Phage (with cluster) where this start called: KeAlii\_56 (AZ1),

Start 9:

- Found in 2 of 9 ( 22.2% ) of genes in pham

- Manual Annotations of this start: 1 of 6
- Called 50.0% of time when present
- Phage (with cluster) where this start called: Mutzi\_44 (DC1),

Start 10:

- Found in 1 of 9 ( 11.1% ) of genes in pham
- Manual Annotations of this start: 1 of 6
- Called 100.0% of time when present
- Phage (with cluster) where this start called: Sue2\_55 (AZ1),

Start 11:

- Found in 2 of 9 ( 22.2% ) of genes in pham
- Manual Annotations of this start: 2 of 6
- Called 100.0% of time when present
- Phage (with cluster) where this start called: Reedo\_56 (AZ1), VResidence\_56 (AZ1),

Start 13:

- Found in 3 of 9 ( 33.3% ) of genes in pham
- Manual Annotations of this start: 1 of 6
- Called 100.0% of time when present
- Phage (with cluster) where this start called: CallinAllBarbz\_51 (FP), GrimEater\_50 (FP), Jankie\_52 (FP),

Start 14:

- Found in 1 of 9 ( 11.1% ) of genes in pham
- No Manual Annotations of this start.
- Called 100.0% of time when present
- Phage (with cluster) where this start called: Elfy\_61 (FP),

### **Summary by clusters:**

There are 3 clusters represented in this pham: FP, AZ1, DC1,

Info for manual annotations of cluster AZ1:

- Start number 8 was manually annotated 1 time for cluster AZ1.
- Start number 10 was manually annotated 1 time for cluster AZ1.
- Start number 11 was manually annotated 2 times for cluster AZ1.

Info for manual annotations of cluster DC1:

- Start number 9 was manually annotated 1 time for cluster DC1.

Info for manual annotations of cluster FP:

- Start number 13 was manually annotated 1 time for cluster FP.

### **Gene Information:**

Gene: CallinAllBarbz\_51 Start: 36641, Stop: 36862, Start Num: 13

Candidate Starts for CallinAllBarbz\_51:

(Start: 13 @36641 has 1 MA's), (21, 36683), (22, 36686),

Gene: Elfy\_61 Start: 37955, Stop: 38137, Start Num: 14

Candidate Starts for Elfy\_61:

(Start: 9 @37931 has 1 MA's), (14, 37955), (18, 37976), (20, 37988), (25, 38036), (30, 38108), (31, 38111),

Gene: GrimEater\_50 Start: 35180, Stop: 35371, Start Num: 13

Candidate Starts for GrimEater\_50:

(Start: 13 @35180 has 1 MA's), (24, 35255),

Gene: Jankie\_52 Start: 35359, Stop: 35550, Start Num: 13

Candidate Starts for Jankie\_52:

(Start: 13 @35359 has 1 MA's), (24, 35434),

Gene: KeAlii\_56 Start: 38432, Stop: 38650, Start Num: 8

Candidate Starts for KeAlii\_56:

(Start: 8 @38432 has 1 MA's), (15, 38468), (20, 38495), (29, 38609), (31, 38621),

Gene: Mutzi\_44 Start: 37917, Stop: 38132, Start Num: 9

Candidate Starts for Mutzi\_44:

(1, 37686), (2, 37707), (3, 37767), (Start: 9 @37917 has 1 MA's), (16, 37962), (23, 38010), (24, 38028), (26, 38049), (27, 38052), (28, 38097),

Gene: Reedo\_56 Start: 36712, Stop: 36921, Start Num: 11

Candidate Starts for Reedo\_56:

(4, 36628), (5, 36667), (6, 36676), (Start: 11 @36712 has 2 MA's),

Gene: Sue2\_55 Start: 38279, Stop: 38485, Start Num: 10

Candidate Starts for Sue2\_55:

(7, 38258), (Start: 10 @38279 has 1 MA's), (17, 38309),

Gene: VResidence\_56 Start: 37677, Stop: 37886, Start Num: 11

Candidate Starts for VResidence\_56:

(Start: 11 @37677 has 2 MA's), (12, 37695), (19, 37725), (31, 37857),