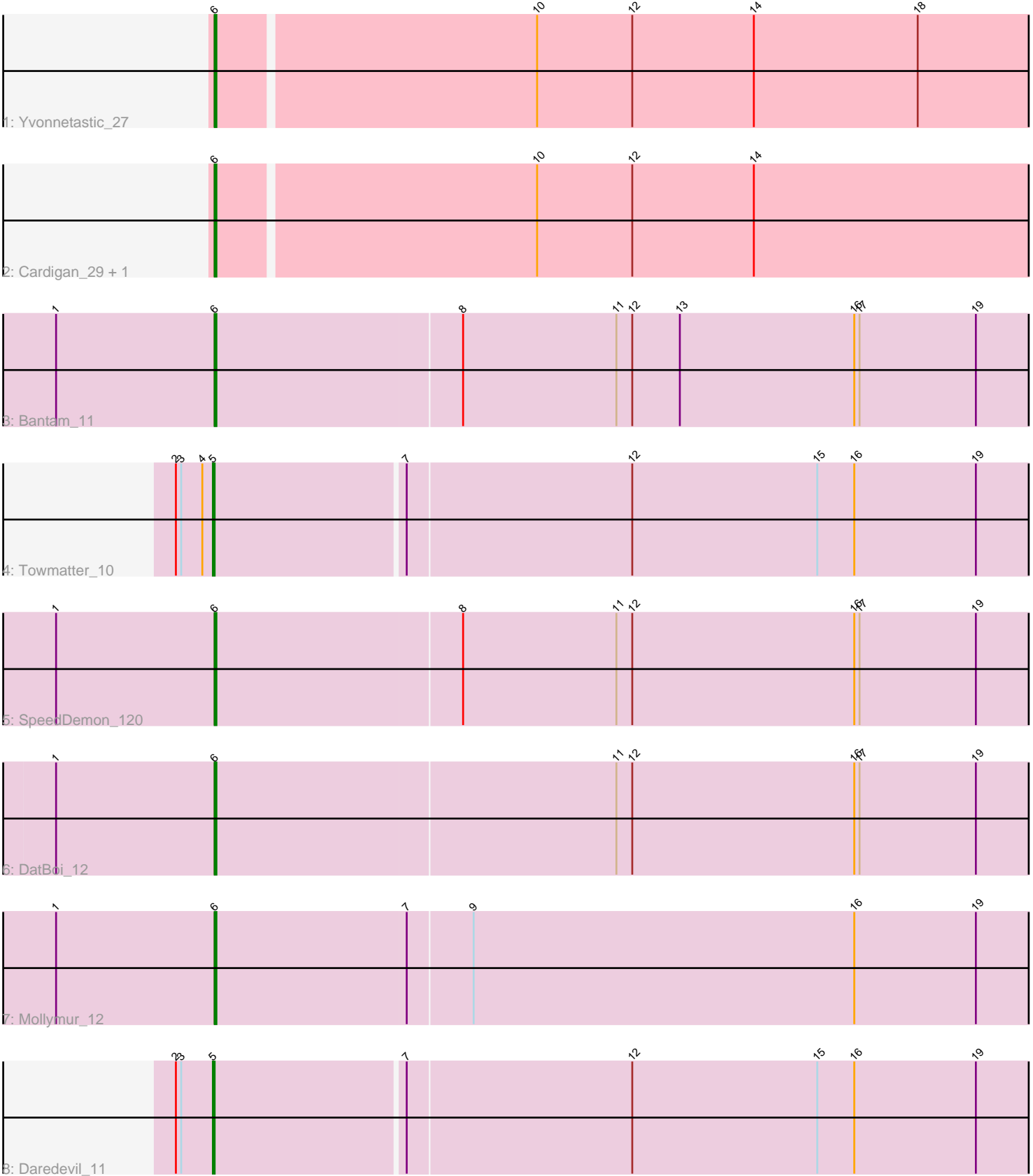


Pham 281148



Note: Tracks are now grouped by subcluster and scaled. Switching in subcluster is indicated by changes in track color. Track scale is now set by default to display the region 30 bp upstream of start 1 to 30 bp downstream of the last possible start. If this default region is judged to be packed too tightly with annotated starts, the track will be further scaled to only show that region of the ORF with annotated starts. This action will be indicated by adding "Zoomed" to the title. For starts, yellow indicates the location of called starts comprised solely of Glimmer/GeneMark auto-annotations, green indicates the location of called starts with at least 1 manual gene annotation.

Pham 281148 Report

This analysis was run 02/07/26 on database version 634.

Pham number 281148 has 9 members, 1 are drafts.

Phages represented in each track:

- Track 1 : Yvonnetastic_27
- Track 2 : Cardigan_29, JonJames_29
- Track 3 : Bantam_11
- Track 4 : Towmatter_10
- Track 5 : SpeedDemon_120
- Track 6 : DatBoi_12
- Track 7 : Mollymur_12
- Track 8 : Daredevil_11

Summary of Final Annotations (See graph section above for start numbers):

The start number called the most often in the published annotations is 6, it was called in 6 of the 8 non-draft genes in the pham.

Genes that call this "Most Annotated" start:

- Bantam_11, Cardigan_29, DatBoi_12, JonJames_29, Mollymur_12, SpeedDemon_120, Yvonnetastic_27,

Genes that have the "Most Annotated" start but do not call it:

-

Genes that do not have the "Most Annotated" start:

- Daredevil_11, Towmatter_10,

Summary by start number:

Start 5:

- Found in 2 of 9 (22.2%) of genes in pham
- Manual Annotations of this start: 2 of 8
- Called 100.0% of time when present
- Phage (with cluster) where this start called: Daredevil_11 (DL), Towmatter_10 (DL),

Start 6:

- Found in 7 of 9 (77.8%) of genes in pham

- Manual Annotations of this start: 6 of 8
- Called 100.0% of time when present
- Phage (with cluster) where this start called: Bantam_11 (DL), Cardigan_29 (DD), DatBoi_12 (DL), JonJames_29 (DD), Mollymur_12 (DL), SpeedDemon_120 (DL), Yvonnestic_27 (DD),

Summary by clusters:

There are 2 clusters represented in this pham: DD, DL,

Info for manual annotations of cluster DD:

- Start number 6 was manually annotated 2 times for cluster DD.

Info for manual annotations of cluster DL:

- Start number 5 was manually annotated 2 times for cluster DL.
- Start number 6 was manually annotated 4 times for cluster DL.

Gene Information:

Gene: Bantam_11 Start: 5625, Stop: 6089, Start Num: 6

Candidate Starts for Bantam_11:

(1, 5535), (Start: 6 @5625 has 6 MA's), (8, 5763), (11, 5850), (12, 5859), (13, 5886), (16, 5985), (17, 5988), (19, 6054),

Gene: Cardigan_29 Start: 10212, Stop: 10694, Start Num: 6

Candidate Starts for Cardigan_29:

(Start: 6 @10212 has 6 MA's), (10, 10389), (12, 10443), (14, 10512),

Gene: Daredevil_11 Start: 4538, Stop: 4999, Start Num: 5

Candidate Starts for Daredevil_11:

(2, 4517), (3, 4520), (Start: 5 @4538 has 2 MA's), (7, 4643), (12, 4769), (15, 4874), (16, 4895), (19, 4964),

Gene: DatBoi_12 Start: 6450, Stop: 6914, Start Num: 6

Candidate Starts for DatBoi_12:

(1, 6360), (Start: 6 @6450 has 6 MA's), (11, 6675), (12, 6684), (16, 6810), (17, 6813), (19, 6879),

Gene: JonJames_29 Start: 11407, Stop: 11889, Start Num: 6

Candidate Starts for JonJames_29:

(Start: 6 @11407 has 6 MA's), (10, 11584), (12, 11638), (14, 11707),

Gene: Mollymur_12 Start: 6532, Stop: 6996, Start Num: 6

Candidate Starts for Mollymur_12:

(1, 6442), (Start: 6 @6532 has 6 MA's), (7, 6640), (9, 6676), (16, 6892), (19, 6961),

Gene: SpeedDemon_120 Start: 5931, Stop: 6395, Start Num: 6

Candidate Starts for SpeedDemon_120:

(1, 5841), (Start: 6 @5931 has 6 MA's), (8, 6069), (11, 6156), (12, 6165), (16, 6291), (17, 6294), (19, 6360),

Gene: Towmatter_10 Start: 4360, Stop: 4821, Start Num: 5

Candidate Starts for Towmatter_10:

(2, 4339), (3, 4342), (4, 4354), (Start: 5 @4360 has 2 MA's), (7, 4465), (12, 4591), (15, 4696), (16, 4717), (19, 4786),

Gene: Yvonnetastic_27 Start: 9976, Stop: 10458, Start Num: 6

Candidate Starts for Yvonnetastic_27:

(Start: 6 @9976 has 6 MA's), (10, 10153), (12, 10207), (14, 10276), (18, 10369),