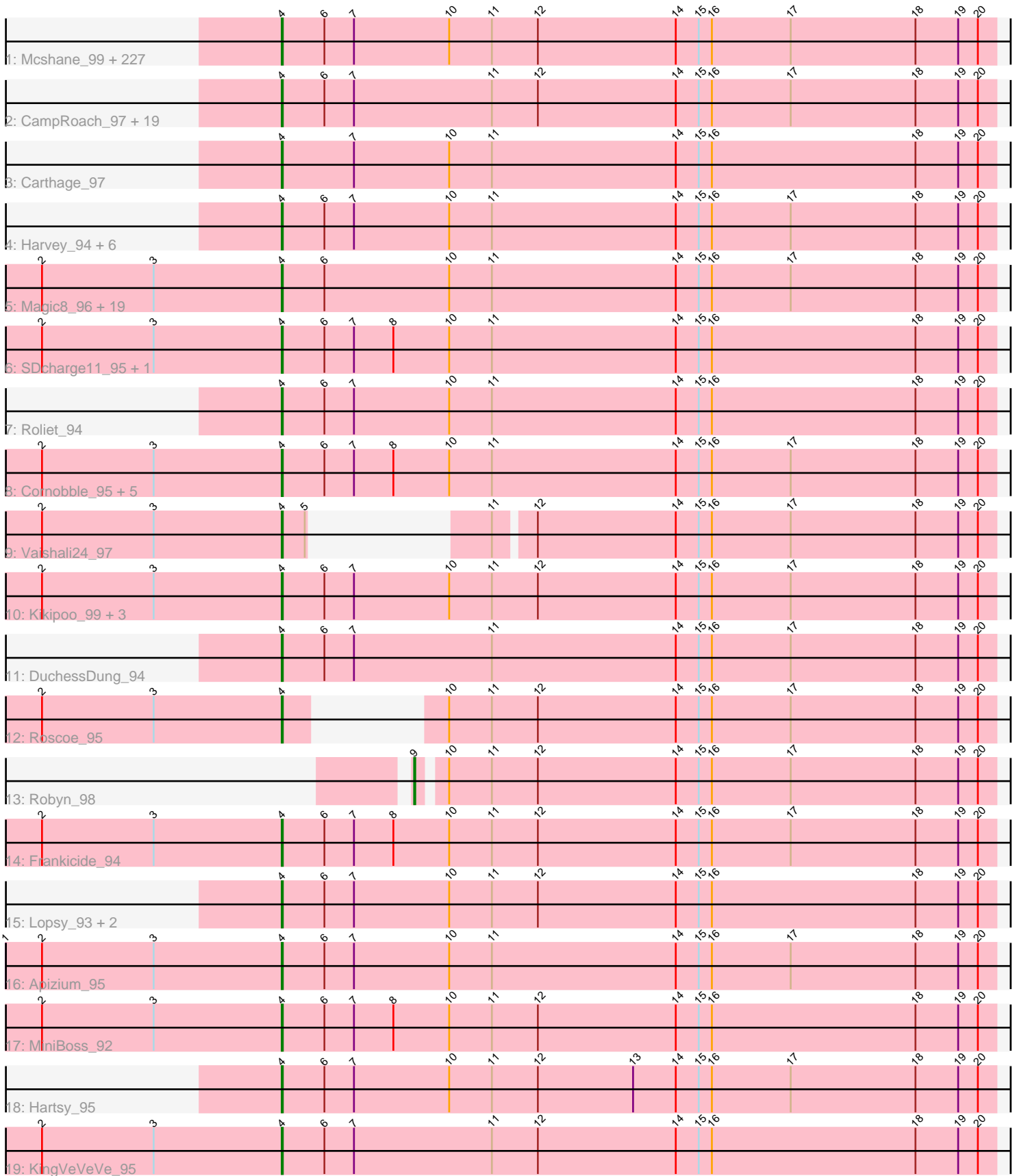


Pham 292405



Note: Tracks are now grouped by subcluster and scaled. Switching in subcluster is indicated by changes in track color. Track scale is now set by default to display the region 30 bp upstream of start 1 to 30 bp downstream of the last possible start. If this default region is judged to be packed too tightly with annotated starts, the track will be further scaled to only show that region of the ORF with annotated starts. This action will be indicated by adding "Zoomed" to the title. For starts, yellow indicates the location of called starts comprised solely of Glimmer/GeneMark auto-annotations, green indicates the location of called starts with at least 1 manual gene annotation.

Pham 292405 Report

This analysis was run 04/18/26 on database version 643.

Pham number 292405 has 301 members, 28 are drafts.

Phages represented in each track:

- Track 1 : Mcshane_99, Placalicious_94, Craff_98, Flake_99, UAch1_97, PallasAthena_98, Puhltonio_92, Gareth_97, SilverBell_98, Struggle_97, Suffolk_92, True_98, Happabalu_95, Olive_93, Thunderbird_97, Phunky_94, BlackStallion_96, Keitherie_100, Phipps_94, Eugenia_99, OneBrain_98, SassyCat97_95, Olak_99, Mecca_97, Oline_96, Phergie_97, Squid_96, Selr12_101, AbsoluteMadLad_95, Ricotta_98, DaddyDaniels_100, JacAttac_97, Lego3393_95, Inverness_94, Potter_91, Anderson_98, Simielle_97, Andre_101, Orfeu_97, Gwennie1_96, Buckeye_95, PG1_95, TallGrassMM_96, Jiraiya_98, Jesabah_101, Bishoperium_97, Longacauda_97, BoogieWoogie_98, Numberten_97, Oosterbaan_97, Lumine_98, Inchworm_98, Yoshand_98, Chah_99, Newman_92, Podrick_95, Badfish_97, Cannibal_97, Beaglebox_93, Slatt_99, Etaye_96, Kwadwo_96, FugateOSU_97, Hertubise_96, Toni_96, Manad_96, Orwigg_98, OliverWalter_96, GeneCoco_96, Doddsville_94, TomBombadil_97, Dione_95, Nicole21_98, Haimas_94, FluffyNinja_98, Phareon_94, Waterdiva_98, DirtJuice_98, GreenChile_95, HenryJackson_97, DonSanchon_92, Childish_97, Hekos_94, KLucky39_94, UncleHowie_93, Cosmolli16_98, Dati_94, Legolas_98, Matalotodo_95, Haleema_96, Charles1_100, Tomlarah_97, JDog_96, LemonSlice_97, Nyala_97, EmpTee_96, HogWash_97, Jillium_97, Melc17_94, Larson_99, Burr_99, Riggan_98, Fringe_101, Piglet_0096, Cher_97, Spartan300_96, Altwerkus_94, Hocus_96, Samaymay_97, LeiMonet_100, LuckyMarjie_94, ShadowBud_98, Timmi_95, CamL_97, Zelda_97, MRabcd_97, Chuni_98, Scoot17C_97, Cornbread_97, Freya_93, Thora_95, Pacifista_99, Plmatters_94, Jiminy_97, FremontTroll_97, Virapocalypse_98, Chute_97, HighStump_99, Held_95, Pherdinand_98, Banjo_93, Zaider_98, Mulan_96, SallyH_100, Plata_94, Hamish_94, Grand2040_94, Bluephacebaby_96, Usavi_97, Mana_94, Mesh1_97, FriarPreacher_94, Morgushi_94, RedRaider89_95, QueenBeane_97, Swiphy_99, Squiggle_96, Dice_97, Soile_98, ABU_95, Orion_95, ProfessorX_94, Karn_96, TooFast2Furius_97, Chipette_94, LostAndPhound_96, CheetO_93, KlimbOn_96, Serpentine_0099, JakeO_98, Prickles_97, LasagnaCat_98, Cobra_97, Sigman_96, Crownjwl_94, Scrick_98, KingTut_87, Nathan_96, Sophia_95, Vaticameos_94, Skippy_97, DoesntMatter_94, Iridoclysis_96, Trypo_97, Colbert_95, Lulwa_94, Aleia_96, Nacho_0099, Katniss_99, Telesworld_95, PhatLouie_99, PhatCats2014_96, Brilliant_100, Mosaic_94, Xavier_96, Megatron_98, Lasso_96, Weher20_94, Vortex_95, PhenghisKhan_97, PhrodoBaggins_99, Iridessa_99, Mesmerelda_97, PhrankReynolds_95, ShiVal_96, DolOn_100, Maru_96, Fang_97, Mutante_98, Emiris_99, Sheila_91, Kahve_97, DelRivs_96, Omniscient_98, Morty_97, Giraffe_98, Daffy_96, Kimbrough_98, LeeLot_95, MitKao_97, Swish_98, Duggie_97, Serendipity_96, Riverton_95, ThreeOh3D2_98, Quisquilliae_99,

PinheadLarry_96, Solosis_95, Hetaeria_96, Phamished_96, Gophee_96, Vista_96, YouGoGlencoco_97, Adriana_97, Murdoc_93, JangoPhett_95, Aonishiki_97, Coletti_100

- Track 2 : CampRoach_97, Durga_99, BlacksBerry_97, Virgeve_95, Khan1_97, Chorkpop_98, Caspiboi_96, Surely_97, Fozzie_93, Lulumae_92, Kwksand96_98, Roy17_94, Valjean_95, Megamind20_99, MrPhizzler_100, Rimu_96, Pinkman_96, Wallhey_98, Zonia_97, FleetyMac_101

- Track 3 : Carthage_97

- Track 4 : Harvey_94, Dingo_93, Soto_93, Pipsqueak_94, Mikota_91, Basato_95, Kloppinator_97

- Track 5 : Magic8_96, Labeouficaum_97, Derpp_96, Maskar_98, CharlieGBrown_95, AngelCake_97, ImtiyazSitla_98, MelsMeow_95, Schueller_95, SirBeauregard_97, Mag7_95, Ashraf_98, MichaelPhcott_95, Chaelin_97, Windsor_96, Phleuron_94, BatteryCK_95, Kailash_95, Veritas_96, TyrionL_97

- Track 6 : SDcharge11_95, Daka_98

- Track 7 : Roliet_94

- Track 8 : Cornobble_95, Aelin_96, Antonia_96, OSmaximus_97, RedMaple_95, Schadenfreude_97

- Track 9 : Vaishali24_97

- Track 10 : Kikipoo_99, Gwilliam_97, AltPhacts_94, IsaacEli_99

- Track 11 : DuchessDung_94

- Track 12 : Roscoe_95

- Track 13 : Robyn_98

- Track 14 : Frankicide_94

- Track 15 : Lopsy_93, Tooj_94, Eremos_94

- Track 16 : Apizium_95

- Track 17 : MiniBoss_92

- Track 18 : Hartsy_95

- Track 19 : KingVeVeVe_95

Summary of Final Annotations (See graph section above for start numbers):

The start number called the most often in the published annotations is 4, it was called in 272 of the 273 non-draft genes in the pham.

Genes that call this "Most Annotated" start:

- ABU_95, AbsoluteMadLad_95, Adriana_97, Aelin_96, Aleia_96, AltPhacts_94, Altwerkus_94, Anderson_98, Andre_101, AngelCake_97, Antonia_96, Aonishiki_97, Apizium_95, Ashraf_98, Badfish_97, Banjo_93, Basato_95, BatteryCK_95, Beaglebox_93, Bishoperium_97, BlackStallion_96, BlacksBerry_97, Bluephacebaby_96, BoogieWoogie_98, Brilliant_100, Buckeye_95, Burr_99, CamL_97, CampRoach_97, Cannibal_97, Carthage_97, Caspiboi_96, Chaelin_97, Chah_99, Charles1_100, CharlieGBrown_95, CheetO_93, Cher_97, Childish_97, Chipette_94, Chorkpop_98, Chuni_98, Chute_97, Cobra_97, Colbert_95, Coletti_100, Cornbread_97, Cornobble_95, Cosmolli16_98, Craff_98, Crownjwl_94, DaddyDaniels_100, Daffy_96, Daka_98, Dati_94, DelRivs_96, Derpp_96, Dice_97, Dingo_93, Dione_95, DirtJuice_98, Doddsville_94, DoesntMatter_94, DolOn_100, DonSanchon_92, DuchessDung_94, Duggie_97, Durga_99, Emiris_99, EmpTee_96, Eremos_94, Etaye_96, Eugenia_99, Fang_97, Flake_99, FleetyMac_101, FluffyNinja_98, Fozzie_93, Frankicide_94, FremontTroll_97, Freya_93,

FriarPreacher_94, Fringe_101, FugateOSU_97, Gareth_97, GeneCoco_96, Giraffe_98, Gophee_96, Grand2040_94, GreenChile_95, Gwennie1_96, Gwilliam_97, Haimas_94, Haleema_96, Hamish_94, Happabalu_95, Hartsy_95, Harvey_94, Hekos_94, Held_95, HenryJackson_97, Hertubise_96, Hetaeria_96, HighStump_99, Hocus_96, HogWash_97, ImtiyazSitla_98, Inchworm_98, Inverness_94, Iridessa_99, Iridoclysis_96, IsaacEli_99, JDog_96, JacAttac_97, JakeO_98, JangoPhett_95, Jesabah_101, Jillium_97, Jiminy_97, Jiraiya_98, KLucky39_94, Kahve_97, Kailash_95, Karn_96, Katniss_99, Keitherie_100, Khan1_97, Kikipoo_99, Kimbrough_98, KingTut_87, KingVeVeVe_95, KlimbOn_96, Kloppinator_97, Kwadwo_96, Kwksand96_98, Labeouficaum_97, Larson_99, LasagnaCat_98, Lasso_96, LeeLot_95, Lego3393_95, Legolas_98, LeiMonet_100, LemonSlice_97, Longacauda_97, Lopsy_93, LostAndPhound_96, LuckyMarjie_94, Lulumae_92, Lulwa_94, Lumine_98, MRabcd_97, Mag7_95, Magic8_96, Mana_94, Manad_96, Maru_96, Maskar_98, Matalotodo_95, Mcshane_99, Mecca_97, Megamind20_99, Megatron_98, Melc17_94, MelsMeow_95, Mesh1_97, Mesmerelda_97, MichaelPhcott_95, Mikota_91, MiniBoss_92, MitKao_97, Morgushi_94, Morty_97, Mosaic_94, MrPhizzler_100, Mulan_96, Murdoc_93, Mutante_98, Nacho_0099, Nathan_96, Newman_92, Nicole21_98, Numberben_97, Nyala_97, OSmaximus_97, Olak_99, Oline_96, Olive_93, OliverWalter_96, Omniscient_98, OneBrain_98, Oosterbaan_97, Orfeu_97, Orion_95, Orwigg_98, PG1_95, Pacifista_99, PallasAthena_98, Phamished_96, Phareon_94, PhatCats2014_96, PhatLouie_99, PhenghisKhan_97, Pherdinand_98, Phergie_97, Phipps_94, Phleuron_94, PhrankReynolds_95, PhrodoBaggins_99, Phunky_94, Piglet_0096, PinheadLarry_96, Pinkman_96, Pipsqueak_94, Placalicious_94, Plata_94, Plmatters_94, Podrick_95, Potter_91, Prickles_97, ProfessorX_94, Puhltonio_92, QueenBeane_97, Quisquilliae_99, RedMaple_95, RedRaider89_95, Ricotta_98, Riggan_98, Rimu_96, Riverton_95, Roliet_94, Roscoe_95, Roy17_94, SDcharge11_95, SallyH_100, Samaymay_97, SassyCat97_95, Schadenfreude_97, Schueller_95, Scoot17C_97, Scrick_98, Selr12_101, Serendipity_96, Serpentine_0099, ShadowBud_98, Sheila_91, ShiVal_96, Sigman_96, SilverBell_98, Simielle_97, SirBeauregard_97, Skippy_97, Slatt_99, Soile_98, Solosis_95, Sophia_95, Soto_93, Spartan300_96, Squid_96, Squiggle_96, Struggle_97, Suffolk_92, Surely_97, Swiphy_99, Swish_98, TallGrassMM_96, Telesworld_95, Thora_95, ThreeOh3D2_98, Thunderbird_97, Timmi_95, TomBombadil_97, Tomlarah_97, Toni_96, TooFast2Furius_97, Tooj_94, True_98, Trypo_97, TyrionL_97, UAch1_97, UncleHowie_93, Usavi_97, Vaishali24_97, Valjean_95, Vaticameos_94, Veritas_96, Virapocalypse_98, Virgeve_95, Vista_96, Vortex_95, Wallhey_98, Waterdiva_98, Weher20_94, Windsor_96, Xavier_96, Yoshand_98, YouGoGlencoco_97, Zaider_98, Zeldia_97, Zonia_97,

Genes that have the "Most Annotated" start but do not call it:

-

Genes that do not have the "Most Annotated" start:

- Robyn_98,

Summary by start number:

Start 4:

- Found in 300 of 301 (99.7%) of genes in pham
- Manual Annotations of this start: 272 of 273
- Called 100.0% of time when present

• Phage (with cluster) where this start called: ABU_95 (B1), AbsoluteMadLad_95 (B1), Adriana_97 (B1), Aelin_96 (B1), Aleia_96 (B1), AltPhacts_94 (B1), Altwerkus_94 (B1), Anderson_98 (B1), Andre_101 (B1), AngelCake_97 (B1), Antonia_96 (B1), Aonishiki_97 (B1), Apizium_95 (B1), Ashraf_98 (B1), Badfish_97 (B1), Banjo_93 (B1), Basato_95 (B1), BatteryCK_95 (B1), Beaglebox_93 (B1), Bishoperium_97 (B1), BlackStallion_96 (B1), BlacksBerry_97 (B1), Bluephacebaby_96 (B1), BoogieWoogie_98 (B1), Brilliant_100 (B1), Buckeye_95 (B1), Burr_99 (B1), CamL_97 (B1), CampRoach_97 (B1), Cannibal_97 (B1), Carthage_97 (B1), CaspiBoi_96 (B1), Chaelin_97 (B1), Chah_99 (B1), Charles1_100 (B1), CharlieGBrown_95 (B1), CheetO_93 (B1), Cher_97 (B1), Childish_97 (B1), Chipette_94 (B1), Chorkpop_98 (B1), Chuni_98 (B1), Chute_97 (B1), Cobra_97 (B1), Colbert_95 (B1), Coletti_100 (B1), Cornbread_97 (B1), Cornobble_95 (B1), Cosmolli16_98 (B1), Craff_98 (B1), Crownjwl_94 (B1), DaddyDaniels_100 (B1), Daffy_96 (B1), Daka_98 (B1), Dati_94 (B1), DelRivs_96 (B1), Derpp_96 (B1), Dice_97 (B1), Dingo_93 (B1), Dione_95 (B1), DirtJuice_98 (B1), Doddsville_94 (B1), DoesntMatter_94 (B1), DolOn_100 (B1), DonSanchon_92 (B1), DuchessDung_94 (B1), Duggie_97 (B1), Durga_99 (B1), Emiris_99 (B1), EmpTee_96 (B1), Eremos_94 (B1), Etaye_96 (B1), Eugenia_99 (B1), Fang_97 (B1), Flake_99 (B1), FleetyMac_101 (B1), FluffyNinja_98 (B1), Fozzie_93 (B1), Frankicide_94 (B1), FremontTroll_97 (B1), Freya_93 (B1), FriarPreacher_94 (B1), Fringe_101 (B1), FugateOSU_97 (B1), Gareth_97 (B1), GeneCoco_96 (B1), Giraffe_98 (B1), Gophee_96 (B1), Grand2040_94 (B1), GreenChile_95 (B1), Gwennie1_96 (B1), Gwilliam_97 (B1), Haimas_94 (B1), Haleema_96 (B1), Hamish_94 (B1), Happabalu_95 (B1), Hartsy_95 (B1), Harvey_94 (B1), Hekos_94 (B1), Held_95 (B1), HenryJackson_97 (B1), Hertubise_96 (B1), Hetaeria_96 (B1), HighStump_99 (B1), Hocus_96 (B1), HogWash_97 (B1), ImtiyazSitla_98 (B1), Inchworm_98 (B1), Inverness_94 (B1), Iridessa_99 (B1), Iridoclysis_96 (B1), IsaacEli_99 (B1), JDog_96 (B1), JacAttac_97 (B1), JakeO_98 (B1), JangoPhett_95 (B1), Jesabah_101 (B1), Jillium_97 (B1), Jiminy_97 (B1), Jiraiya_98 (B1), KLucky39_94 (B1), Kahve_97 (B1), Kailash_95 (B1), Karn_96 (B1), Katniss_99 (B1), Keitherie_100 (B1), Khan1_97 (B1), Kikipoo_99 (B1), Kimbrough_98 (B1), KingTut_87 (B1), KingVeVeVe_95 (B1), KlimbOn_96 (B1), Kloppinator_97 (B1), Kwadwo_96 (B1), Kwksand96_98 (B1), Labeouficaum_97 (B1), Larson_99 (B1), LasagnaCat_98 (B1), Lasso_96 (B1), LeeLot_95 (B1), Lego3393_95 (B1), Legolas_98 (B1), LeiMonet_100 (B1), LemonSlice_97 (B1), Longacauda_97 (B1), Lopsy_93 (B1), LostAndPhound_96 (B1), LuckyMarjie_94 (B1), Lulumae_92 (B1), Lulwa_94 (B1), Lumine_98 (B1), MRabcd_97 (B1), Mag7_95 (B1), Magic8_96 (B1), Mana_94 (B1), Manad_96 (B1), Maru_96 (B1), Maskar_98 (B1), Matalotodo_95 (B1), Mcshane_99 (B1), Mecca_97 (B1), Megamind20_99 (B1), Megatron_98 (B1), Melc17_94 (B1), MelsMeow_95 (B1), Mesh1_97 (B1), Mesmerelda_97 (B1), MichaelPhcott_95 (B1), Mikota_91 (B1), MiniBoss_92 (B1), MitKao_97 (B1), Morgushi_94 (B1), Morty_97 (B1), Mosaic_94 (B1), MrPhizzler_100 (B1), Mulan_96 (B1), Murdoc_93 (B1), Mutante_98 (B1), Nacho_0099 (B1), Nathan_96 (B1), Newman_92 (B1), Nicole21_98 (B1), Numberten_97 (B1), Nyala_97 (B1), OSmaximus_97 (B1), Olak_99 (B1), Oline_96 (B1), Olive_93 (B1), OliverWalter_96 (B1), Omniscient_98 (B1), OneBrain_98 (B1), Oosterbaan_97 (B1), Orfeu_97 (B1), Orion_95 (B1), Orwigg_98 (B1), PG1_95 (B1), Pacifista_99 (B1), PallasAthena_98 (B1), Phamished_96 (B1), Phareon_94 (B1), PhatCats2014_96 (B1), PhatLouie_99 (B1), PhenghisKhan_97 (B1), Pherdinand_98 (B1), Phergie_97 (B1), Phipps_94 (B1), Phleuron_94 (B1), PhrankReynolds_95 (B1), PhrodoBaggins_99 (B1), Phunky_94 (B1), Piglet_0096 (B1), PinheadLarry_96 (B1), Pinkman_96 (B1), Pipsqueak_94 (B1), Placalicious_94 (B1), Plata_94 (B1), Plmatters_94 (B1), Podrick_95 (B1), Potter_91 (B1), Prickles_97 (B1), ProfessorX_94 (B1), Puhltonio_92 (B1), QueenBeane_97 (B1), Quisquilliae_99 (B1), RedMaple_95 (B1), RedRaider89_95 (B1), Ricotta_98

(B1), Riggan_98 (B1), Rimu_96 (B1), Riverton_95 (B1), Roliet_94 (B1), Roscoe_95 (B1), Roy17_94 (B1), SDcharge11_95 (B1), SallyH_100 (B1), Samaymay_97 (B1), SassyCat97_95 (B1), Schadenfreude_97 (B1), Schueller_95 (B1), Scoot17C_97 (B1), Scrick_98 (B1), Selr12_101 (B1), Serendipity_96 (B1), Serpentine_0099 (B1), ShadowBud_98 (B1), Sheila_91 (B1), ShiVal_96 (B1), Sigman_96 (B1), SilverBell_98 (B1), Simielle_97 (B1), SirBeauregard_97 (B1), Skippy_97 (B1), Slatt_99 (B1), Soile_98 (B1), Solosis_95 (B1), Sophia_95 (B1), Soto_93 (B1), Spartan300_96 (B1), Squid_96 (B1), Squiggle_96 (B1), Struggle_97 (B1), Suffolk_92 (B1), Surely_97 (B1), Swiphy_99 (B1), Swish_98 (B1), TallGrassMM_96 (B1), Telesworld_95 (B1), Thora_95 (B1), ThreeOh3D2_98 (B1), Thunderbird_97 (B1), Timmi_95 (B1), TomBombadil_97 (B1), Tomlarah_97 (B1), Toni_96 (B1), TooFast2Furious_97 (B1), Tooj_94 (B1), True_98 (B1), Trypo_97 (B1), TyrionL_97 (B1), UAch1_97 (B1), UncleHowie_93 (B1), Usavi_97 (B1), Vaishali24_97 (B1), Valjean_95 (B1), Vaticameos_94 (B1), Veritas_96 (B1), Virapocalypse_98 (B1), Virgeve_95 (B1), Vista_96 (B1), Vortex_95 (B1), Wallhey_98 (B1), Waterdiva_98 (B1), Weher20_94 (B1), Windsor_96 (B1), Xavier_96 (B1), Yoshand_98 (B1), YouGoGlencoco_97 (B1), Zaider_98 (B1), Zelda_97 (B1), Zonia_97 (B1),

Start 9:

- Found in 1 of 301 (0.3%) of genes in pham
- Manual Annotations of this start: 1 of 273
- Called 100.0% of time when present
- Phage (with cluster) where this start called: Robyn_98 (B1),

Summary by clusters:

There is one cluster represented in this pham: B1

Info for manual annotations of cluster B1:

- Start number 4 was manually annotated 272 times for cluster B1.
- Start number 9 was manually annotated 1 time for cluster B1.

Gene Information:

Gene: ABU_95 Start: 67275, Stop: 66544, Start Num: 4

Candidate Starts for ABU_95:

(Start: 4 @67275 has 272 MA's), (6, 67236), (7, 67209), (10, 67122), (11, 67083), (12, 67041), (14, 66915), (15, 66894), (16, 66882), (17, 66810), (18, 66696), (19, 66657), (20, 66639),

Gene: AbsoluteMadLad_95 Start: 67228, Stop: 66497, Start Num: 4

Candidate Starts for AbsoluteMadLad_95:

(Start: 4 @67228 has 272 MA's), (6, 67189), (7, 67162), (10, 67075), (11, 67036), (12, 66994), (14, 66868), (15, 66847), (16, 66835), (17, 66763), (18, 66649), (19, 66610), (20, 66592),

Gene: Adriana_97 Start: 67547, Stop: 66816, Start Num: 4

Candidate Starts for Adriana_97:

(Start: 4 @67547 has 272 MA's), (6, 67508), (7, 67481), (10, 67394), (11, 67355), (12, 67313), (14, 67187), (15, 67166), (16, 67154), (17, 67082), (18, 66968), (19, 66929), (20, 66911),

Gene: Aelin_96 Start: 66908, Stop: 66177, Start Num: 4

Candidate Starts for Aelin_96:

(2, 67127), (3, 67025), (Start: 4 @66908 has 272 MA's), (6, 66869), (7, 66842), (8, 66806), (10, 66755), (11, 66716), (14, 66548), (15, 66527), (16, 66515), (17, 66443), (18, 66329), (19, 66290), (20, 66272),

Gene: Aleia_96 Start: 66917, Stop: 66186, Start Num: 4

Candidate Starts for Aleia_96:

(Start: 4 @66917 has 272 MA's), (6, 66878), (7, 66851), (10, 66764), (11, 66725), (12, 66683), (14, 66557), (15, 66536), (16, 66524), (17, 66452), (18, 66338), (19, 66299), (20, 66281),

Gene: AltPhacts_94 Start: 66481, Stop: 65750, Start Num: 4

Candidate Starts for AltPhacts_94:

(2, 66700), (3, 66598), (Start: 4 @66481 has 272 MA's), (6, 66442), (7, 66415), (10, 66328), (11, 66289), (12, 66247), (14, 66121), (15, 66100), (16, 66088), (17, 66016), (18, 65902), (19, 65863), (20, 65845),

Gene: Altwerkus_94 Start: 66604, Stop: 65873, Start Num: 4

Candidate Starts for Altwerkus_94:

(Start: 4 @66604 has 272 MA's), (6, 66565), (7, 66538), (10, 66451), (11, 66412), (12, 66370), (14, 66244), (15, 66223), (16, 66211), (17, 66139), (18, 66025), (19, 65986), (20, 65968),

Gene: Anderson_98 Start: 67151, Stop: 66420, Start Num: 4

Candidate Starts for Anderson_98:

(Start: 4 @67151 has 272 MA's), (6, 67112), (7, 67085), (10, 66998), (11, 66959), (12, 66917), (14, 66791), (15, 66770), (16, 66758), (17, 66686), (18, 66572), (19, 66533), (20, 66515),

Gene: Andre_101 Start: 67542, Stop: 66811, Start Num: 4

Candidate Starts for Andre_101:

(Start: 4 @67542 has 272 MA's), (6, 67503), (7, 67476), (10, 67389), (11, 67350), (12, 67308), (14, 67182), (15, 67161), (16, 67149), (17, 67077), (18, 66963), (19, 66924), (20, 66906),

Gene: AngelCake_97 Start: 66900, Stop: 66169, Start Num: 4

Candidate Starts for AngelCake_97:

(2, 67119), (3, 67017), (Start: 4 @66900 has 272 MA's), (6, 66861), (10, 66747), (11, 66708), (14, 66540), (15, 66519), (16, 66507), (17, 66435), (18, 66321), (19, 66282), (20, 66264),

Gene: Antonia_96 Start: 66776, Stop: 66045, Start Num: 4

Candidate Starts for Antonia_96:

(2, 66995), (3, 66893), (Start: 4 @66776 has 272 MA's), (6, 66737), (7, 66710), (8, 66674), (10, 66623), (11, 66584), (14, 66416), (15, 66395), (16, 66383), (17, 66311), (18, 66197), (19, 66158), (20, 66140),

Gene: Aonishiki_97 Start: 67086, Stop: 66355, Start Num: 4

Candidate Starts for Aonishiki_97:

(Start: 4 @67086 has 272 MA's), (6, 67047), (7, 67020), (10, 66933), (11, 66894), (12, 66852), (14, 66726), (15, 66705), (16, 66693), (17, 66621), (18, 66507), (19, 66468), (20, 66450),

Gene: Apizium_95 Start: 66429, Stop: 65698, Start Num: 4

Candidate Starts for Apizium_95:

(1, 66681), (2, 66648), (3, 66546), (Start: 4 @66429 has 272 MA's), (6, 66390), (7, 66363), (10, 66276), (11, 66237), (14, 66069), (15, 66048), (16, 66036), (17, 65964), (18, 65850), (19, 65811), (20, 65793),

Gene: Ashraf_98 Start: 67284, Stop: 66532, Start Num: 4

Candidate Starts for Ashraf_98:

(2, 67503), (3, 67401), (Start: 4 @67284 has 272 MA's), (6, 67245), (10, 67131), (11, 67092), (14, 66924), (15, 66903), (16, 66891), (17, 66819), (18, 66705), (19, 66666), (20, 66648),

Gene: Badfish_97 Start: 67455, Stop: 66724, Start Num: 4

Candidate Starts for Badfish_97:

(Start: 4 @67455 has 272 MA's), (6, 67416), (7, 67389), (10, 67302), (11, 67263), (12, 67221), (14, 67095), (15, 67074), (16, 67062), (17, 66990), (18, 66876), (19, 66837), (20, 66819),

Gene: Banjo_93 Start: 66721, Stop: 65990, Start Num: 4

Candidate Starts for Banjo_93:

(Start: 4 @66721 has 272 MA's), (6, 66682), (7, 66655), (10, 66568), (11, 66529), (12, 66487), (14, 66361), (15, 66340), (16, 66328), (17, 66256), (18, 66142), (19, 66103), (20, 66085),

Gene: Basato_95 Start: 66941, Stop: 66210, Start Num: 4

Candidate Starts for Basato_95:

(Start: 4 @66941 has 272 MA's), (6, 66902), (7, 66875), (10, 66788), (11, 66749), (14, 66581), (15, 66560), (16, 66548), (17, 66476), (18, 66362), (19, 66323), (20, 66305),

Gene: BatteryCK_95 Start: 66711, Stop: 65980, Start Num: 4

Candidate Starts for BatteryCK_95:

(2, 66930), (3, 66828), (Start: 4 @66711 has 272 MA's), (6, 66672), (10, 66558), (11, 66519), (14, 66351), (15, 66330), (16, 66318), (17, 66246), (18, 66132), (19, 66093), (20, 66075),

Gene: Beaglebox_93 Start: 66843, Stop: 66112, Start Num: 4

Candidate Starts for Beaglebox_93:

(Start: 4 @66843 has 272 MA's), (6, 66804), (7, 66777), (10, 66690), (11, 66651), (12, 66609), (14, 66483), (15, 66462), (16, 66450), (17, 66378), (18, 66264), (19, 66225), (20, 66207),

Gene: Bishoperium_97 Start: 67290, Stop: 66559, Start Num: 4

Candidate Starts for Bishoperium_97:

(Start: 4 @67290 has 272 MA's), (6, 67251), (7, 67224), (10, 67137), (11, 67098), (12, 67056), (14, 66930), (15, 66909), (16, 66897), (17, 66825), (18, 66711), (19, 66672), (20, 66654),

Gene: BlackStallion_96 Start: 67139, Stop: 66408, Start Num: 4

Candidate Starts for BlackStallion_96:

(Start: 4 @67139 has 272 MA's), (6, 67100), (7, 67073), (10, 66986), (11, 66947), (12, 66905), (14, 66779), (15, 66758), (16, 66746), (17, 66674), (18, 66560), (19, 66521), (20, 66503),

Gene: BlacksBerry_97 Start: 66665, Stop: 65934, Start Num: 4

Candidate Starts for BlacksBerry_97:

(Start: 4 @66665 has 272 MA's), (6, 66626), (7, 66599), (11, 66473), (12, 66431), (14, 66305), (15, 66284), (16, 66272), (17, 66200), (18, 66086), (19, 66047), (20, 66029),

Gene: Bluephacebaby_96 Start: 67324, Stop: 66593, Start Num: 4

Candidate Starts for Bluephacebaby_96:

(Start: 4 @67324 has 272 MA's), (6, 67285), (7, 67258), (10, 67171), (11, 67132), (12, 67090), (14, 66964), (15, 66943), (16, 66931), (17, 66859), (18, 66745), (19, 66706), (20, 66688),

Gene: BoogieWoogie_98 Start: 67105, Stop: 66374, Start Num: 4

Candidate Starts for BoogieWoogie_98:

(Start: 4 @67105 has 272 MA's), (6, 67066), (7, 67039), (10, 66952), (11, 66913), (12, 66871), (14, 66745), (15, 66724), (16, 66712), (17, 66640), (18, 66526), (19, 66487), (20, 66469),

Gene: Brilliant_100 Start: 67303, Stop: 66572, Start Num: 4

Candidate Starts for Brilliant_100:

(Start: 4 @67303 has 272 MA's), (6, 67264), (7, 67237), (10, 67150), (11, 67111), (12, 67069), (14, 66943), (15, 66922), (16, 66910), (17, 66838), (18, 66724), (19, 66685), (20, 66667),

Gene: Buckeye_95 Start: 67599, Stop: 66868, Start Num: 4

Candidate Starts for Buckeye_95:

(Start: 4 @67599 has 272 MA's), (6, 67560), (7, 67533), (10, 67446), (11, 67407), (12, 67365), (14, 67239), (15, 67218), (16, 67206), (17, 67134), (18, 67020), (19, 66981), (20, 66963),

Gene: Burr_99 Start: 67145, Stop: 66414, Start Num: 4

Candidate Starts for Burr_99:

(Start: 4 @67145 has 272 MA's), (6, 67106), (7, 67079), (10, 66992), (11, 66953), (12, 66911), (14, 66785), (15, 66764), (16, 66752), (17, 66680), (18, 66566), (19, 66527), (20, 66509),

Gene: CamL_97 Start: 67075, Stop: 66344, Start Num: 4

Candidate Starts for CamL_97:

(Start: 4 @67075 has 272 MA's), (6, 67036), (7, 67009), (10, 66922), (11, 66883), (12, 66841), (14, 66715), (15, 66694), (16, 66682), (17, 66610), (18, 66496), (19, 66457), (20, 66439),

Gene: CampRoach_97 Start: 67171, Stop: 66440, Start Num: 4

Candidate Starts for CampRoach_97:

(Start: 4 @67171 has 272 MA's), (6, 67132), (7, 67105), (11, 66979), (12, 66937), (14, 66811), (15, 66790), (16, 66778), (17, 66706), (18, 66592), (19, 66553), (20, 66535),

Gene: Cannibal_97 Start: 67178, Stop: 66447, Start Num: 4

Candidate Starts for Cannibal_97:

(Start: 4 @67178 has 272 MA's), (6, 67139), (7, 67112), (10, 67025), (11, 66986), (12, 66944), (14, 66818), (15, 66797), (16, 66785), (17, 66713), (18, 66599), (19, 66560), (20, 66542),

Gene: Carthage_97 Start: 66633, Stop: 65902, Start Num: 4

Candidate Starts for Carthage_97:

(Start: 4 @66633 has 272 MA's), (7, 66567), (10, 66480), (11, 66441), (14, 66273), (15, 66252), (16, 66240), (18, 66054), (19, 66015), (20, 65997),

Gene: Caspiboi_96 Start: 67009, Stop: 66278, Start Num: 4

Candidate Starts for Caspiboi_96:

(Start: 4 @67009 has 272 MA's), (6, 66970), (7, 66943), (11, 66817), (12, 66775), (14, 66649), (15, 66628), (16, 66616), (17, 66544), (18, 66430), (19, 66391), (20, 66373),

Gene: Chaelin_97 Start: 67047, Stop: 66295, Start Num: 4

Candidate Starts for Chaelin_97:

(2, 67266), (3, 67164), (Start: 4 @67047 has 272 MA's), (6, 67008), (10, 66894), (11, 66855), (14, 66687), (15, 66666), (16, 66654), (17, 66582), (18, 66468), (19, 66429), (20, 66411),

Gene: Chah_99 Start: 66875, Stop: 66144, Start Num: 4

Candidate Starts for Chah_99:

(Start: 4 @66875 has 272 MA's), (6, 66836), (7, 66809), (10, 66722), (11, 66683), (12, 66641), (14, 66515), (15, 66494), (16, 66482), (17, 66410), (18, 66296), (19, 66257), (20, 66239),

Gene: Charles1_100 Start: 67453, Stop: 66722, Start Num: 4

Candidate Starts for Charles1_100:

(Start: 4 @67453 has 272 MA's), (6, 67414), (7, 67387), (10, 67300), (11, 67261), (12, 67219), (14, 67093), (15, 67072), (16, 67060), (17, 66988), (18, 66874), (19, 66835), (20, 66817),

Gene: CharlieGBrown_95 Start: 66806, Stop: 66075, Start Num: 4

Candidate Starts for CharlieGBrown_95:

(2, 67025), (3, 66923), (Start: 4 @66806 has 272 MA's), (6, 66767), (10, 66653), (11, 66614), (14, 66446), (15, 66425), (16, 66413), (17, 66341), (18, 66227), (19, 66188), (20, 66170),

Gene: CheetO_93 Start: 66925, Stop: 66194, Start Num: 4

Candidate Starts for CheetO_93:

(Start: 4 @66925 has 272 MA's), (6, 66886), (7, 66859), (10, 66772), (11, 66733), (12, 66691), (14, 66565), (15, 66544), (16, 66532), (17, 66460), (18, 66346), (19, 66307), (20, 66289),

Gene: Cher_97 Start: 67279, Stop: 66548, Start Num: 4

Candidate Starts for Cher_97:

(Start: 4 @67279 has 272 MA's), (6, 67240), (7, 67213), (10, 67126), (11, 67087), (12, 67045), (14, 66919), (15, 66898), (16, 66886), (17, 66814), (18, 66700), (19, 66661), (20, 66643),

Gene: Childish_97 Start: 67469, Stop: 66738, Start Num: 4

Candidate Starts for Childish_97:

(Start: 4 @67469 has 272 MA's), (6, 67430), (7, 67403), (10, 67316), (11, 67277), (12, 67235), (14, 67109), (15, 67088), (16, 67076), (17, 67004), (18, 66890), (19, 66851), (20, 66833),

Gene: Chipette_94 Start: 66762, Stop: 66031, Start Num: 4

Candidate Starts for Chipette_94:

(Start: 4 @66762 has 272 MA's), (6, 66723), (7, 66696), (10, 66609), (11, 66570), (12, 66528), (14, 66402), (15, 66381), (16, 66369), (17, 66297), (18, 66183), (19, 66144), (20, 66126),

Gene: Chorkpop_98 Start: 66931, Stop: 66200, Start Num: 4

Candidate Starts for Chorkpop_98:

(Start: 4 @66931 has 272 MA's), (6, 66892), (7, 66865), (11, 66739), (12, 66697), (14, 66571), (15, 66550), (16, 66538), (17, 66466), (18, 66352), (19, 66313), (20, 66295),

Gene: Chuni_98 Start: 67516, Stop: 66785, Start Num: 4

Candidate Starts for Chuni_98:

(Start: 4 @67516 has 272 MA's), (6, 67477), (7, 67450), (10, 67363), (11, 67324), (12, 67282), (14, 67156), (15, 67135), (16, 67123), (17, 67051), (18, 66937), (19, 66898), (20, 66880),

Gene: Chute_97 Start: 67470, Stop: 66739, Start Num: 4

Candidate Starts for Chute_97:

(Start: 4 @67470 has 272 MA's), (6, 67431), (7, 67404), (10, 67317), (11, 67278), (12, 67236), (14, 67110), (15, 67089), (16, 67077), (17, 67005), (18, 66891), (19, 66852), (20, 66834),

Gene: Cobra_97 Start: 67300, Stop: 66569, Start Num: 4

Candidate Starts for Cobra_97:

(Start: 4 @67300 has 272 MA's), (6, 67261), (7, 67234), (10, 67147), (11, 67108), (12, 67066), (14, 66940), (15, 66919), (16, 66907), (17, 66835), (18, 66721), (19, 66682), (20, 66664),

Gene: Colbert_95 Start: 66199, Stop: 65468, Start Num: 4

Candidate Starts for Colbert_95:

(Start: 4 @66199 has 272 MA's), (6, 66160), (7, 66133), (10, 66046), (11, 66007), (12, 65965), (14, 65839), (15, 65818), (16, 65806), (17, 65734), (18, 65620), (19, 65581), (20, 65563),

Gene: Coletti_100 Start: 67826, Stop: 67095, Start Num: 4

Candidate Starts for Coletti_100:

(Start: 4 @67826 has 272 MA's), (6, 67787), (7, 67760), (10, 67673), (11, 67634), (12, 67592), (14, 67466), (15, 67445), (16, 67433), (17, 67361), (18, 67247), (19, 67208), (20, 67190),

Gene: Cornbread_97 Start: 67327, Stop: 66596, Start Num: 4

Candidate Starts for Cornbread_97:

(Start: 4 @67327 has 272 MA's), (6, 67288), (7, 67261), (10, 67174), (11, 67135), (12, 67093), (14, 66967), (15, 66946), (16, 66934), (17, 66862), (18, 66748), (19, 66709), (20, 66691),

Gene: Cornobble_95 Start: 66927, Stop: 66196, Start Num: 4

Candidate Starts for Cornobble_95:

(2, 67146), (3, 67044), (Start: 4 @66927 has 272 MA's), (6, 66888), (7, 66861), (8, 66825), (10, 66774), (11, 66735), (14, 66567), (15, 66546), (16, 66534), (17, 66462), (18, 66348), (19, 66309), (20, 66291),

Gene: Cosmolli16_98 Start: 67403, Stop: 66672, Start Num: 4

Candidate Starts for Cosmolli16_98:

(Start: 4 @67403 has 272 MA's), (6, 67364), (7, 67337), (10, 67250), (11, 67211), (12, 67169), (14, 67043), (15, 67022), (16, 67010), (17, 66938), (18, 66824), (19, 66785), (20, 66767),

Gene: Craff_98 Start: 67688, Stop: 66957, Start Num: 4

Candidate Starts for Craff_98:

(Start: 4 @67688 has 272 MA's), (6, 67649), (7, 67622), (10, 67535), (11, 67496), (12, 67454), (14, 67328), (15, 67307), (16, 67295), (17, 67223), (18, 67109), (19, 67070), (20, 67052),

Gene: Crownjwl_94 Start: 66943, Stop: 66212, Start Num: 4

Candidate Starts for Crownjwl_94:

(Start: 4 @66943 has 272 MA's), (6, 66904), (7, 66877), (10, 66790), (11, 66751), (12, 66709), (14, 66583), (15, 66562), (16, 66550), (17, 66478), (18, 66364), (19, 66325), (20, 66307),

Gene: DaddyDaniels_100 Start: 67422, Stop: 66691, Start Num: 4

Candidate Starts for DaddyDaniels_100:

(Start: 4 @67422 has 272 MA's), (6, 67383), (7, 67356), (10, 67269), (11, 67230), (12, 67188), (14, 67062), (15, 67041), (16, 67029), (17, 66957), (18, 66843), (19, 66804), (20, 66786),

Gene: Daffy_96 Start: 66916, Stop: 66185, Start Num: 4

Candidate Starts for Daffy_96:

(Start: 4 @66916 has 272 MA's), (6, 66877), (7, 66850), (10, 66763), (11, 66724), (12, 66682), (14, 66556), (15, 66535), (16, 66523), (17, 66451), (18, 66337), (19, 66298), (20, 66280),

Gene: Daka_98 Start: 66879, Stop: 66148, Start Num: 4

Candidate Starts for Daka_98:

(2, 67098), (3, 66996), (Start: 4 @66879 has 272 MA's), (6, 66840), (7, 66813), (8, 66777), (10, 66726), (11, 66687), (14, 66519), (15, 66498), (16, 66486), (18, 66300), (19, 66261), (20, 66243),

Gene: Dati_94 Start: 67101, Stop: 66370, Start Num: 4

Candidate Starts for Dati_94:

(Start: 4 @67101 has 272 MA's), (6, 67062), (7, 67035), (10, 66948), (11, 66909), (12, 66867), (14, 66741), (15, 66720), (16, 66708), (17, 66636), (18, 66522), (19, 66483), (20, 66465),

Gene: DelRivs_96 Start: 66730, Stop: 65999, Start Num: 4

Candidate Starts for DelRivs_96:

(Start: 4 @66730 has 272 MA's), (6, 66691), (7, 66664), (10, 66577), (11, 66538), (12, 66496), (14, 66370), (15, 66349), (16, 66337), (17, 66265), (18, 66151), (19, 66112), (20, 66094),

Gene: Derpp_96 Start: 66839, Stop: 66108, Start Num: 4

Candidate Starts for Derpp_96:

(2, 67058), (3, 66956), (Start: 4 @66839 has 272 MA's), (6, 66800), (10, 66686), (11, 66647), (14, 66479), (15, 66458), (16, 66446), (17, 66374), (18, 66260), (19, 66221), (20, 66203),

Gene: Dice_97 Start: 66762, Stop: 66031, Start Num: 4

Candidate Starts for Dice_97:

(Start: 4 @66762 has 272 MA's), (6, 66723), (7, 66696), (10, 66609), (11, 66570), (12, 66528), (14, 66402), (15, 66381), (16, 66369), (17, 66297), (18, 66183), (19, 66144), (20, 66126),

Gene: Dingo_93 Start: 66204, Stop: 65473, Start Num: 4

Candidate Starts for Dingo_93:

(Start: 4 @66204 has 272 MA's), (6, 66165), (7, 66138), (10, 66051), (11, 66012), (14, 65844), (15, 65823), (16, 65811), (17, 65739), (18, 65625), (19, 65586), (20, 65568),

Gene: Dione_95 Start: 66482, Stop: 65751, Start Num: 4

Candidate Starts for Dione_95:

(Start: 4 @66482 has 272 MA's), (6, 66443), (7, 66416), (10, 66329), (11, 66290), (12, 66248), (14, 66122), (15, 66101), (16, 66089), (17, 66017), (18, 65903), (19, 65864), (20, 65846),

Gene: DirtJuice_98 Start: 67591, Stop: 66860, Start Num: 4

Candidate Starts for DirtJuice_98:

(Start: 4 @67591 has 272 MA's), (6, 67552), (7, 67525), (10, 67438), (11, 67399), (12, 67357), (14, 67231), (15, 67210), (16, 67198), (17, 67126), (18, 67012), (19, 66973), (20, 66955),

Gene: Doddsville_94 Start: 66922, Stop: 66191, Start Num: 4

Candidate Starts for Doddsville_94:

(Start: 4 @66922 has 272 MA's), (6, 66883), (7, 66856), (10, 66769), (11, 66730), (12, 66688), (14, 66562), (15, 66541), (16, 66529), (17, 66457), (18, 66343), (19, 66304), (20, 66286),

Gene: DoesntMatter_94 Start: 66756, Stop: 66025, Start Num: 4

Candidate Starts for DoesntMatter_94:

(Start: 4 @66756 has 272 MA's), (6, 66717), (7, 66690), (10, 66603), (11, 66564), (12, 66522), (14, 66396), (15, 66375), (16, 66363), (17, 66291), (18, 66177), (19, 66138), (20, 66120),

Gene: DolOn_100 Start: 67964, Stop: 67233, Start Num: 4

Candidate Starts for DolOn_100:

(Start: 4 @67964 has 272 MA's), (6, 67925), (7, 67898), (10, 67811), (11, 67772), (12, 67730), (14, 67604), (15, 67583), (16, 67571), (17, 67499), (18, 67385), (19, 67346), (20, 67328),

Gene: DonSanchon_92 Start: 66440, Stop: 65709, Start Num: 4

Candidate Starts for DonSanchon_92:

(Start: 4 @66440 has 272 MA's), (6, 66401), (7, 66374), (10, 66287), (11, 66248), (12, 66206), (14, 66080), (15, 66059), (16, 66047), (17, 65975), (18, 65861), (19, 65822), (20, 65804),

Gene: DuchessDung_94 Start: 66437, Stop: 65706, Start Num: 4

Candidate Starts for DuchessDung_94:

(Start: 4 @66437 has 272 MA's), (6, 66398), (7, 66371), (11, 66245), (14, 66077), (15, 66056), (16, 66044), (17, 65972), (18, 65858), (19, 65819), (20, 65801),

Gene: Duggie_97 Start: 67064, Stop: 66333, Start Num: 4

Candidate Starts for Duggie_97:

(Start: 4 @67064 has 272 MA's), (6, 67025), (7, 66998), (10, 66911), (11, 66872), (12, 66830), (14, 66704), (15, 66683), (16, 66671), (17, 66599), (18, 66485), (19, 66446), (20, 66428),

Gene: Durga_99 Start: 67545, Stop: 66814, Start Num: 4

Candidate Starts for Durga_99:

(Start: 4 @67545 has 272 MA's), (6, 67506), (7, 67479), (11, 67353), (12, 67311), (14, 67185), (15, 67164), (16, 67152), (17, 67080), (18, 66966), (19, 66927), (20, 66909),

Gene: Emiris_99 Start: 67452, Stop: 66721, Start Num: 4

Candidate Starts for Emiris_99:

(Start: 4 @67452 has 272 MA's), (6, 67413), (7, 67386), (10, 67299), (11, 67260), (12, 67218), (14, 67092), (15, 67071), (16, 67059), (17, 66987), (18, 66873), (19, 66834), (20, 66816),

Gene: EmpTee_96 Start: 66853, Stop: 66122, Start Num: 4

Candidate Starts for EmpTee_96:

(Start: 4 @66853 has 272 MA's), (6, 66814), (7, 66787), (10, 66700), (11, 66661), (12, 66619), (14, 66493), (15, 66472), (16, 66460), (17, 66388), (18, 66274), (19, 66235), (20, 66217),

Gene: Eremos_94 Start: 66900, Stop: 66169, Start Num: 4

Candidate Starts for Eremos_94:

(Start: 4 @66900 has 272 MA's), (6, 66861), (7, 66834), (10, 66747), (11, 66708), (12, 66666), (14, 66540), (15, 66519), (16, 66507), (18, 66321), (19, 66282), (20, 66264),

Gene: Etaye_96 Start: 67629, Stop: 66898, Start Num: 4

Candidate Starts for Etaye_96:

(Start: 4 @67629 has 272 MA's), (6, 67590), (7, 67563), (10, 67476), (11, 67437), (12, 67395), (14, 67269), (15, 67248), (16, 67236), (17, 67164), (18, 67050), (19, 67011), (20, 66993),

Gene: Eugenia_99 Start: 67564, Stop: 66833, Start Num: 4

Candidate Starts for Eugenia_99:

(Start: 4 @67564 has 272 MA's), (6, 67525), (7, 67498), (10, 67411), (11, 67372), (12, 67330), (14, 67204), (15, 67183), (16, 67171), (17, 67099), (18, 66985), (19, 66946), (20, 66928),

Gene: Fang_97 Start: 66994, Stop: 66263, Start Num: 4

Candidate Starts for Fang_97:

(Start: 4 @66994 has 272 MA's), (6, 66955), (7, 66928), (10, 66841), (11, 66802), (12, 66760), (14, 66634), (15, 66613), (16, 66601), (17, 66529), (18, 66415), (19, 66376), (20, 66358),

Gene: Flake_99 Start: 67044, Stop: 66313, Start Num: 4

Candidate Starts for Flake_99:

(Start: 4 @67044 has 272 MA's), (6, 67005), (7, 66978), (10, 66891), (11, 66852), (12, 66810), (14, 66684), (15, 66663), (16, 66651), (17, 66579), (18, 66465), (19, 66426), (20, 66408),

Gene: FleetyMac_101 Start: 67324, Stop: 66593, Start Num: 4

Candidate Starts for FleetyMac_101:

(Start: 4 @67324 has 272 MA's), (6, 67285), (7, 67258), (11, 67132), (12, 67090), (14, 66964), (15, 66943), (16, 66931), (17, 66859), (18, 66745), (19, 66706), (20, 66688),

Gene: FluffyNinja_98 Start: 67141, Stop: 66410, Start Num: 4

Candidate Starts for FluffyNinja_98:

(Start: 4 @67141 has 272 MA's), (6, 67102), (7, 67075), (10, 66988), (11, 66949), (12, 66907), (14, 66781), (15, 66760), (16, 66748), (17, 66676), (18, 66562), (19, 66523), (20, 66505),

Gene: Fozzie_93 Start: 67190, Stop: 66459, Start Num: 4

Candidate Starts for Fozzie_93:

(Start: 4 @67190 has 272 MA's), (6, 67151), (7, 67124), (11, 66998), (12, 66956), (14, 66830), (15, 66809), (16, 66797), (17, 66725), (18, 66611), (19, 66572), (20, 66554),

Gene: Frankicide_94 Start: 66690, Stop: 65959, Start Num: 4

Candidate Starts for Frankicide_94:

(2, 66909), (3, 66807), (Start: 4 @66690 has 272 MA's), (6, 66651), (7, 66624), (8, 66588), (10, 66537), (11, 66498), (12, 66456), (14, 66330), (15, 66309), (16, 66297), (17, 66225), (18, 66111), (19, 66072), (20, 66054),

Gene: FremontTroll_97 Start: 67751, Stop: 67020, Start Num: 4

Candidate Starts for FremontTroll_97:

(Start: 4 @67751 has 272 MA's), (6, 67712), (7, 67685), (10, 67598), (11, 67559), (12, 67517), (14, 67391), (15, 67370), (16, 67358), (17, 67286), (18, 67172), (19, 67133), (20, 67115),

Gene: Freya_93 Start: 66460, Stop: 65729, Start Num: 4

Candidate Starts for Freya_93:

(Start: 4 @66460 has 272 MA's), (6, 66421), (7, 66394), (10, 66307), (11, 66268), (12, 66226), (14, 66100), (15, 66079), (16, 66067), (17, 65995), (18, 65881), (19, 65842), (20, 65824),

Gene: FriarPreacher_94 Start: 66839, Stop: 66108, Start Num: 4

Candidate Starts for FriarPreacher_94:

(Start: 4 @66839 has 272 MA's), (6, 66800), (7, 66773), (10, 66686), (11, 66647), (12, 66605), (14, 66479), (15, 66458), (16, 66446), (17, 66374), (18, 66260), (19, 66221), (20, 66203),

Gene: Fringe_101 Start: 67616, Stop: 66885, Start Num: 4

Candidate Starts for Fringe_101:

(Start: 4 @67616 has 272 MA's), (6, 67577), (7, 67550), (10, 67463), (11, 67424), (12, 67382), (14, 67256), (15, 67235), (16, 67223), (17, 67151), (18, 67037), (19, 66998), (20, 66980),

Gene: FugateOSU_97 Start: 67901, Stop: 67170, Start Num: 4

Candidate Starts for FugateOSU_97:

(Start: 4 @67901 has 272 MA's), (6, 67862), (7, 67835), (10, 67748), (11, 67709), (12, 67667), (14, 67541), (15, 67520), (16, 67508), (17, 67436), (18, 67322), (19, 67283), (20, 67265),

Gene: Gareth_97 Start: 67290, Stop: 66559, Start Num: 4

Candidate Starts for Gareth_97:

(Start: 4 @67290 has 272 MA's), (6, 67251), (7, 67224), (10, 67137), (11, 67098), (12, 67056), (14, 66930), (15, 66909), (16, 66897), (17, 66825), (18, 66711), (19, 66672), (20, 66654),

Gene: GeneCoco_96 Start: 67226, Stop: 66495, Start Num: 4

Candidate Starts for GeneCoco_96:

(Start: 4 @67226 has 272 MA's), (6, 67187), (7, 67160), (10, 67073), (11, 67034), (12, 66992), (14, 66866), (15, 66845), (16, 66833), (17, 66761), (18, 66647), (19, 66608), (20, 66590),

Gene: Giraffe_98 Start: 67294, Stop: 66563, Start Num: 4

Candidate Starts for Giraffe_98:

(Start: 4 @67294 has 272 MA's), (6, 67255), (7, 67228), (10, 67141), (11, 67102), (12, 67060), (14, 66934), (15, 66913), (16, 66901), (17, 66829), (18, 66715), (19, 66676), (20, 66658),

Gene: Gophee_96 Start: 67281, Stop: 66550, Start Num: 4

Candidate Starts for Gophee_96:

(Start: 4 @67281 has 272 MA's), (6, 67242), (7, 67215), (10, 67128), (11, 67089), (12, 67047), (14, 66921), (15, 66900), (16, 66888), (17, 66816), (18, 66702), (19, 66663), (20, 66645),

Gene: Grand2040_94 Start: 67016, Stop: 66285, Start Num: 4

Candidate Starts for Grand2040_94:

(Start: 4 @67016 has 272 MA's), (6, 66977), (7, 66950), (10, 66863), (11, 66824), (12, 66782), (14, 66656), (15, 66635), (16, 66623), (17, 66551), (18, 66437), (19, 66398), (20, 66380),

Gene: GreenChile_95 Start: 66676, Stop: 65945, Start Num: 4

Candidate Starts for GreenChile_95:

(Start: 4 @66676 has 272 MA's), (6, 66637), (7, 66610), (10, 66523), (11, 66484), (12, 66442), (14, 66316), (15, 66295), (16, 66283), (17, 66211), (18, 66097), (19, 66058), (20, 66040),

Gene: Gwennie1_96 Start: 67105, Stop: 66374, Start Num: 4

Candidate Starts for Gwennie1_96:

(Start: 4 @67105 has 272 MA's), (6, 67066), (7, 67039), (10, 66952), (11, 66913), (12, 66871), (14, 66745), (15, 66724), (16, 66712), (17, 66640), (18, 66526), (19, 66487), (20, 66469),

Gene: Gwilliam_97 Start: 67824, Stop: 67093, Start Num: 4

Candidate Starts for Gwilliam_97:

(2, 68043), (3, 67941), (Start: 4 @67824 has 272 MA's), (6, 67785), (7, 67758), (10, 67671), (11, 67632), (12, 67590), (14, 67464), (15, 67443), (16, 67431), (17, 67359), (18, 67245), (19, 67206), (20, 67188),

Gene: Haimas_94 Start: 66721, Stop: 65990, Start Num: 4

Candidate Starts for Haimas_94:

(Start: 4 @66721 has 272 MA's), (6, 66682), (7, 66655), (10, 66568), (11, 66529), (12, 66487), (14, 66361), (15, 66340), (16, 66328), (17, 66256), (18, 66142), (19, 66103), (20, 66085),

Gene: Haleema_96 Start: 66840, Stop: 66109, Start Num: 4

Candidate Starts for Haleema_96:

(Start: 4 @66840 has 272 MA's), (6, 66801), (7, 66774), (10, 66687), (11, 66648), (12, 66606), (14, 66480), (15, 66459), (16, 66447), (17, 66375), (18, 66261), (19, 66222), (20, 66204),

Gene: Hamish_94 Start: 67009, Stop: 66278, Start Num: 4

Candidate Starts for Hamish_94:

(Start: 4 @67009 has 272 MA's), (6, 66970), (7, 66943), (10, 66856), (11, 66817), (12, 66775), (14, 66649), (15, 66628), (16, 66616), (17, 66544), (18, 66430), (19, 66391), (20, 66373),

Gene: Happabalu_95 Start: 67934, Stop: 67203, Start Num: 4

Candidate Starts for Happabalu_95:

(Start: 4 @67934 has 272 MA's), (6, 67895), (7, 67868), (10, 67781), (11, 67742), (12, 67700), (14, 67574), (15, 67553), (16, 67541), (17, 67469), (18, 67355), (19, 67316), (20, 67298),

Gene: Hartsy_95 Start: 66958, Stop: 66227, Start Num: 4

Candidate Starts for Hartsy_95:

(Start: 4 @66958 has 272 MA's), (6, 66919), (7, 66892), (10, 66805), (11, 66766), (12, 66724), (13, 66637), (14, 66598), (15, 66577), (16, 66565), (17, 66493), (18, 66379), (19, 66340), (20, 66322),

Gene: Harvey_94 Start: 66617, Stop: 65886, Start Num: 4

Candidate Starts for Harvey_94:

(Start: 4 @66617 has 272 MA's), (6, 66578), (7, 66551), (10, 66464), (11, 66425), (14, 66257), (15, 66236), (16, 66224), (17, 66152), (18, 66038), (19, 65999), (20, 65981),

Gene: Hekos_94 Start: 66390, Stop: 65659, Start Num: 4

Candidate Starts for Hekos_94:

(Start: 4 @66390 has 272 MA's), (6, 66351), (7, 66324), (10, 66237), (11, 66198), (12, 66156), (14, 66030), (15, 66009), (16, 65997), (17, 65925), (18, 65811), (19, 65772), (20, 65754),

Gene: Held_95 Start: 66738, Stop: 66007, Start Num: 4

Candidate Starts for Held_95:

(Start: 4 @66738 has 272 MA's), (6, 66699), (7, 66672), (10, 66585), (11, 66546), (12, 66504), (14, 66378), (15, 66357), (16, 66345), (17, 66273), (18, 66159), (19, 66120), (20, 66102),

Gene: HenryJackson_97 Start: 67458, Stop: 66727, Start Num: 4

Candidate Starts for HenryJackson_97:

(Start: 4 @67458 has 272 MA's), (6, 67419), (7, 67392), (10, 67305), (11, 67266), (12, 67224), (14, 67098), (15, 67077), (16, 67065), (17, 66993), (18, 66879), (19, 66840), (20, 66822),

Gene: Hertubise_96 Start: 67100, Stop: 66369, Start Num: 4

Candidate Starts for Hertubise_96:

(Start: 4 @67100 has 272 MA's), (6, 67061), (7, 67034), (10, 66947), (11, 66908), (12, 66866), (14, 66740), (15, 66719), (16, 66707), (17, 66635), (18, 66521), (19, 66482), (20, 66464),

Gene: Hetaeria_96 Start: 66830, Stop: 66099, Start Num: 4

Candidate Starts for Hetaeria_96:

(Start: 4 @66830 has 272 MA's), (6, 66791), (7, 66764), (10, 66677), (11, 66638), (12, 66596), (14, 66470), (15, 66449), (16, 66437), (17, 66365), (18, 66251), (19, 66212), (20, 66194),

Gene: HighStump_99 Start: 67245, Stop: 66514, Start Num: 4

Candidate Starts for HighStump_99:

(Start: 4 @67245 has 272 MA's), (6, 67206), (7, 67179), (10, 67092), (11, 67053), (12, 67011), (14, 66885), (15, 66864), (16, 66852), (17, 66780), (18, 66666), (19, 66627), (20, 66609),

Gene: Hocus_96 Start: 66759, Stop: 66028, Start Num: 4

Candidate Starts for Hocus_96:

(Start: 4 @66759 has 272 MA's), (6, 66720), (7, 66693), (10, 66606), (11, 66567), (12, 66525), (14, 66399), (15, 66378), (16, 66366), (17, 66294), (18, 66180), (19, 66141), (20, 66123),

Gene: HogWash_97 Start: 67771, Stop: 67040, Start Num: 4

Candidate Starts for HogWash_97:

(Start: 4 @67771 has 272 MA's), (6, 67732), (7, 67705), (10, 67618), (11, 67579), (12, 67537), (14, 67411), (15, 67390), (16, 67378), (17, 67306), (18, 67192), (19, 67153), (20, 67135),

Gene: ImtiyazSitla_98 Start: 67284, Stop: 66532, Start Num: 4

Candidate Starts for ImtiyazSitla_98:

(2, 67503), (3, 67401), (Start: 4 @67284 has 272 MA's), (6, 67245), (10, 67131), (11, 67092), (14, 66924), (15, 66903), (16, 66891), (17, 66819), (18, 66705), (19, 66666), (20, 66648),

Gene: Inchworm_98 Start: 67132, Stop: 66401, Start Num: 4

Candidate Starts for Inchworm_98:

(Start: 4 @67132 has 272 MA's), (6, 67093), (7, 67066), (10, 66979), (11, 66940), (12, 66898), (14, 66772), (15, 66751), (16, 66739), (17, 66667), (18, 66553), (19, 66514), (20, 66496),

Gene: Inverness_94 Start: 66689, Stop: 65958, Start Num: 4

Candidate Starts for Inverness_94:

(Start: 4 @66689 has 272 MA's), (6, 66650), (7, 66623), (10, 66536), (11, 66497), (12, 66455), (14, 66329), (15, 66308), (16, 66296), (17, 66224), (18, 66110), (19, 66071), (20, 66053),

Gene: Iridessa_99 Start: 66857, Stop: 66126, Start Num: 4

Candidate Starts for Iridessa_99:

(Start: 4 @66857 has 272 MA's), (6, 66818), (7, 66791), (10, 66704), (11, 66665), (12, 66623), (14, 66497), (15, 66476), (16, 66464), (17, 66392), (18, 66278), (19, 66239), (20, 66221),

Gene: Iridoclysis_96 Start: 67022, Stop: 66291, Start Num: 4

Candidate Starts for Iridoclysis_96:

(Start: 4 @67022 has 272 MA's), (6, 66983), (7, 66956), (10, 66869), (11, 66830), (12, 66788), (14, 66662), (15, 66641), (16, 66629), (17, 66557), (18, 66443), (19, 66404), (20, 66386),

Gene: IsaacEli_99 Start: 67263, Stop: 66532, Start Num: 4

Candidate Starts for IsaacEli_99:

(2, 67482), (3, 67380), (Start: 4 @67263 has 272 MA's), (6, 67224), (7, 67197), (10, 67110), (11, 67071), (12, 67029), (14, 66903), (15, 66882), (16, 66870), (17, 66798), (18, 66684), (19, 66645), (20, 66627),

Gene: JDog_96 Start: 67292, Stop: 66561, Start Num: 4

Candidate Starts for JDog_96:

(Start: 4 @67292 has 272 MA's), (6, 67253), (7, 67226), (10, 67139), (11, 67100), (12, 67058), (14, 66932), (15, 66911), (16, 66899), (17, 66827), (18, 66713), (19, 66674), (20, 66656),

Gene: JacAttac_97 Start: 66736, Stop: 66005, Start Num: 4

Candidate Starts for JacAttac_97:

(Start: 4 @66736 has 272 MA's), (6, 66697), (7, 66670), (10, 66583), (11, 66544), (12, 66502), (14, 66376), (15, 66355), (16, 66343), (17, 66271), (18, 66157), (19, 66118), (20, 66100),

Gene: JakeO_98 Start: 67020, Stop: 66289, Start Num: 4

Candidate Starts for JakeO_98:

(Start: 4 @67020 has 272 MA's), (6, 66981), (7, 66954), (10, 66867), (11, 66828), (12, 66786), (14, 66660), (15, 66639), (16, 66627), (17, 66555), (18, 66441), (19, 66402), (20, 66384),

Gene: JangoPhett_95 Start: 67098, Stop: 66367, Start Num: 4

Candidate Starts for JangoPhett_95:

(Start: 4 @67098 has 272 MA's), (6, 67059), (7, 67032), (10, 66945), (11, 66906), (12, 66864), (14, 66738), (15, 66717), (16, 66705), (17, 66633), (18, 66519), (19, 66480), (20, 66462),

Gene: Jesabah_101 Start: 67861, Stop: 67130, Start Num: 4

Candidate Starts for Jesabah_101:

(Start: 4 @67861 has 272 MA's), (6, 67822), (7, 67795), (10, 67708), (11, 67669), (12, 67627), (14, 67501), (15, 67480), (16, 67468), (17, 67396), (18, 67282), (19, 67243), (20, 67225),

Gene: Jillium_97 Start: 67175, Stop: 66444, Start Num: 4

Candidate Starts for Jillium_97:

(Start: 4 @67175 has 272 MA's), (6, 67136), (7, 67109), (10, 67022), (11, 66983), (12, 66941), (14, 66815), (15, 66794), (16, 66782), (17, 66710), (18, 66596), (19, 66557), (20, 66539),

Gene: Jiminy_97 Start: 66956, Stop: 66225, Start Num: 4

Candidate Starts for Jiminy_97:

(Start: 4 @66956 has 272 MA's), (6, 66917), (7, 66890), (10, 66803), (11, 66764), (12, 66722), (14, 66596), (15, 66575), (16, 66563), (17, 66491), (18, 66377), (19, 66338), (20, 66320),

Gene: Jiraiya_98 Start: 67040, Stop: 66309, Start Num: 4

Candidate Starts for Jiraiya_98:

(Start: 4 @67040 has 272 MA's), (6, 67001), (7, 66974), (10, 66887), (11, 66848), (12, 66806), (14, 66680), (15, 66659), (16, 66647), (17, 66575), (18, 66461), (19, 66422), (20, 66404),

Gene: KLucky39_94 Start: 66560, Stop: 65829, Start Num: 4

Candidate Starts for KLucky39_94:

(Start: 4 @66560 has 272 MA's), (6, 66521), (7, 66494), (10, 66407), (11, 66368), (12, 66326), (14, 66200), (15, 66179), (16, 66167), (17, 66095), (18, 65981), (19, 65942), (20, 65924),

Gene: Kahve_97 Start: 67456, Stop: 66725, Start Num: 4

Candidate Starts for Kahve_97:

(Start: 4 @67456 has 272 MA's), (6, 67417), (7, 67390), (10, 67303), (11, 67264), (12, 67222), (14, 67096), (15, 67075), (16, 67063), (17, 66991), (18, 66877), (19, 66838), (20, 66820),

Gene: Kailash_95 Start: 67155, Stop: 66424, Start Num: 4

Candidate Starts for Kailash_95:

(2, 67374), (3, 67272), (Start: 4 @67155 has 272 MA's), (6, 67116), (10, 67002), (11, 66963), (14, 66795), (15, 66774), (16, 66762), (17, 66690), (18, 66576), (19, 66537), (20, 66519),

Gene: Karn_96 Start: 66768, Stop: 66037, Start Num: 4

Candidate Starts for Karn_96:

(Start: 4 @66768 has 272 MA's), (6, 66729), (7, 66702), (10, 66615), (11, 66576), (12, 66534), (14, 66408), (15, 66387), (16, 66375), (17, 66303), (18, 66189), (19, 66150), (20, 66132),

Gene: Katniss_99 Start: 66872, Stop: 66141, Start Num: 4

Candidate Starts for Katniss_99:

(Start: 4 @66872 has 272 MA's), (6, 66833), (7, 66806), (10, 66719), (11, 66680), (12, 66638), (14, 66512), (15, 66491), (16, 66479), (17, 66407), (18, 66293), (19, 66254), (20, 66236),

Gene: Keitherie_100 Start: 67514, Stop: 66783, Start Num: 4

Candidate Starts for Keitherie_100:

(Start: 4 @67514 has 272 MA's), (6, 67475), (7, 67448), (10, 67361), (11, 67322), (12, 67280), (14, 67154), (15, 67133), (16, 67121), (17, 67049), (18, 66935), (19, 66896), (20, 66878),

Gene: Khan1_97 Start: 67235, Stop: 66504, Start Num: 4

Candidate Starts for Khan1_97:

(Start: 4 @67235 has 272 MA's), (6, 67196), (7, 67169), (11, 67043), (12, 67001), (14, 66875), (15, 66854), (16, 66842), (17, 66770), (18, 66656), (19, 66617), (20, 66599),

Gene: Kikipoo_99 Start: 67263, Stop: 66532, Start Num: 4

Candidate Starts for Kikipoo_99:

(2, 67482), (3, 67380), (Start: 4 @67263 has 272 MA's), (6, 67224), (7, 67197), (10, 67110), (11, 67071), (12, 67029), (14, 66903), (15, 66882), (16, 66870), (17, 66798), (18, 66684), (19, 66645), (20, 66627),

Gene: Kimbrough_98 Start: 67335, Stop: 66604, Start Num: 4

Candidate Starts for Kimbrough_98:

(Start: 4 @67335 has 272 MA's), (6, 67296), (7, 67269), (10, 67182), (11, 67143), (12, 67101), (14, 66975), (15, 66954), (16, 66942), (17, 66870), (18, 66756), (19, 66717), (20, 66699),

Gene: KingTut_87 Start: 63252, Stop: 62521, Start Num: 4

Candidate Starts for KingTut_87:

(Start: 4 @63252 has 272 MA's), (6, 63213), (7, 63186), (10, 63099), (11, 63060), (12, 63018), (14, 62892), (15, 62871), (16, 62859), (17, 62787), (18, 62673), (19, 62634), (20, 62616),

Gene: KingVeVeVe_95 Start: 66468, Stop: 65737, Start Num: 4

Candidate Starts for KingVeVeVe_95:

(2, 66687), (3, 66585), (Start: 4 @66468 has 272 MA's), (6, 66429), (7, 66402), (11, 66276), (12, 66234), (14, 66108), (15, 66087), (16, 66075), (18, 65889), (19, 65850), (20, 65832),

Gene: KlimbOn_96 Start: 66775, Stop: 66044, Start Num: 4

Candidate Starts for KlimbOn_96:

(Start: 4 @66775 has 272 MA's), (6, 66736), (7, 66709), (10, 66622), (11, 66583), (12, 66541), (14, 66415), (15, 66394), (16, 66382), (17, 66310), (18, 66196), (19, 66157), (20, 66139),

Gene: Kloppinator_97 Start: 66905, Stop: 66174, Start Num: 4

Candidate Starts for Kloppinator_97:

(Start: 4 @66905 has 272 MA's), (6, 66866), (7, 66839), (10, 66752), (11, 66713), (14, 66545), (15, 66524), (16, 66512), (17, 66440), (18, 66326), (19, 66287), (20, 66269),

Gene: Kwadwo_96 Start: 66759, Stop: 66028, Start Num: 4

Candidate Starts for Kwadwo_96:

(Start: 4 @66759 has 272 MA's), (6, 66720), (7, 66693), (10, 66606), (11, 66567), (12, 66525), (14, 66399), (15, 66378), (16, 66366), (17, 66294), (18, 66180), (19, 66141), (20, 66123),

Gene: Kwksand96_98 Start: 67025, Stop: 66294, Start Num: 4

Candidate Starts for Kwksand96_98:

(Start: 4 @67025 has 272 MA's), (6, 66986), (7, 66959), (11, 66833), (12, 66791), (14, 66665), (15, 66644), (16, 66632), (17, 66560), (18, 66446), (19, 66407), (20, 66389),

Gene: Labeouficaum_97 Start: 66839, Stop: 66108, Start Num: 4

Candidate Starts for Labeouficaum_97:

(2, 67058), (3, 66956), (Start: 4 @66839 has 272 MA's), (6, 66800), (10, 66686), (11, 66647), (14, 66479), (15, 66458), (16, 66446), (17, 66374), (18, 66260), (19, 66221), (20, 66203),

Gene: Larson_99 Start: 67104, Stop: 66373, Start Num: 4

Candidate Starts for Larson_99:

(Start: 4 @67104 has 272 MA's), (6, 67065), (7, 67038), (10, 66951), (11, 66912), (12, 66870), (14, 66744), (15, 66723), (16, 66711), (17, 66639), (18, 66525), (19, 66486), (20, 66468),

Gene: LasagnaCat_98 Start: 67141, Stop: 66410, Start Num: 4

Candidate Starts for LasagnaCat_98:

(Start: 4 @67141 has 272 MA's), (6, 67102), (7, 67075), (10, 66988), (11, 66949), (12, 66907), (14, 66781), (15, 66760), (16, 66748), (17, 66676), (18, 66562), (19, 66523), (20, 66505),

Gene: Lasso_96 Start: 67001, Stop: 66270, Start Num: 4

Candidate Starts for Lasso_96:

(Start: 4 @67001 has 272 MA's), (6, 66962), (7, 66935), (10, 66848), (11, 66809), (12, 66767), (14, 66641), (15, 66620), (16, 66608), (17, 66536), (18, 66422), (19, 66383), (20, 66365),

Gene: LeeLot_95 Start: 67346, Stop: 66615, Start Num: 4

Candidate Starts for LeeLot_95:

(Start: 4 @67346 has 272 MA's), (6, 67307), (7, 67280), (10, 67193), (11, 67154), (12, 67112), (14, 66986), (15, 66965), (16, 66953), (17, 66881), (18, 66767), (19, 66728), (20, 66710),

Gene: Lego3393_95 Start: 67462, Stop: 66731, Start Num: 4

Candidate Starts for Lego3393_95:

(Start: 4 @67462 has 272 MA's), (6, 67423), (7, 67396), (10, 67309), (11, 67270), (12, 67228), (14, 67102), (15, 67081), (16, 67069), (17, 66997), (18, 66883), (19, 66844), (20, 66826),

Gene: Legolas_98 Start: 67089, Stop: 66358, Start Num: 4

Candidate Starts for Legolas_98:

(Start: 4 @67089 has 272 MA's), (6, 67050), (7, 67023), (10, 66936), (11, 66897), (12, 66855), (14, 66729), (15, 66708), (16, 66696), (17, 66624), (18, 66510), (19, 66471), (20, 66453),

Gene: LeiMonet_100 Start: 67222, Stop: 66491, Start Num: 4

Candidate Starts for LeiMonet_100:

(Start: 4 @67222 has 272 MA's), (6, 67183), (7, 67156), (10, 67069), (11, 67030), (12, 66988), (14, 66862), (15, 66841), (16, 66829), (17, 66757), (18, 66643), (19, 66604), (20, 66586),

Gene: LemonSlice_97 Start: 66748, Stop: 66017, Start Num: 4

Candidate Starts for LemonSlice_97:

(Start: 4 @66748 has 272 MA's), (6, 66709), (7, 66682), (10, 66595), (11, 66556), (12, 66514), (14, 66388), (15, 66367), (16, 66355), (17, 66283), (18, 66169), (19, 66130), (20, 66112),

Gene: Longacauda_97 Start: 66983, Stop: 66231, Start Num: 4

Candidate Starts for Longacauda_97:

(Start: 4 @66983 has 272 MA's), (6, 66944), (7, 66917), (10, 66830), (11, 66791), (12, 66749), (14, 66623), (15, 66602), (16, 66590), (17, 66518), (18, 66404), (19, 66365), (20, 66347),

Gene: Lopsy_93 Start: 66654, Stop: 65923, Start Num: 4

Candidate Starts for Lopsy_93:

(Start: 4 @66654 has 272 MA's), (6, 66615), (7, 66588), (10, 66501), (11, 66462), (12, 66420), (14, 66294), (15, 66273), (16, 66261), (18, 66075), (19, 66036), (20, 66018),

Gene: LostAndPhound_96 Start: 67290, Stop: 66559, Start Num: 4

Candidate Starts for LostAndPhound_96:

(Start: 4 @67290 has 272 MA's), (6, 67251), (7, 67224), (10, 67137), (11, 67098), (12, 67056), (14, 66930), (15, 66909), (16, 66897), (17, 66825), (18, 66711), (19, 66672), (20, 66654),

Gene: LuckyMarjie_94 Start: 66500, Stop: 65769, Start Num: 4

Candidate Starts for LuckyMarjie_94:

(Start: 4 @66500 has 272 MA's), (6, 66461), (7, 66434), (10, 66347), (11, 66308), (12, 66266), (14, 66140), (15, 66119), (16, 66107), (17, 66035), (18, 65921), (19, 65882), (20, 65864),

Gene: Lulumae_92 Start: 66481, Stop: 65750, Start Num: 4

Candidate Starts for Lulumae_92:

(Start: 4 @66481 has 272 MA's), (6, 66442), (7, 66415), (11, 66289), (12, 66247), (14, 66121), (15, 66100), (16, 66088), (17, 66016), (18, 65902), (19, 65863), (20, 65845),

Gene: Lulwa_94 Start: 66114, Stop: 65383, Start Num: 4

Candidate Starts for Lulwa_94:

(Start: 4 @66114 has 272 MA's), (6, 66075), (7, 66048), (10, 65961), (11, 65922), (12, 65880), (14, 65754), (15, 65733), (16, 65721), (17, 65649), (18, 65535), (19, 65496), (20, 65478),

Gene: Lumine_98 Start: 66938, Stop: 66207, Start Num: 4

Candidate Starts for Lumine_98:

(Start: 4 @66938 has 272 MA's), (6, 66899), (7, 66872), (10, 66785), (11, 66746), (12, 66704), (14, 66578), (15, 66557), (16, 66545), (17, 66473), (18, 66359), (19, 66320), (20, 66302),

Gene: MRabcd_97 Start: 67216, Stop: 66485, Start Num: 4

Candidate Starts for MRabcd_97:

(Start: 4 @67216 has 272 MA's), (6, 67177), (7, 67150), (10, 67063), (11, 67024), (12, 66982), (14, 66856), (15, 66835), (16, 66823), (17, 66751), (18, 66637), (19, 66598), (20, 66580),

Gene: Mag7_95 Start: 66699, Stop: 65968, Start Num: 4

Candidate Starts for Mag7_95:

(2, 66918), (3, 66816), (Start: 4 @66699 has 272 MA's), (6, 66660), (10, 66546), (11, 66507), (14, 66339), (15, 66318), (16, 66306), (17, 66234), (18, 66120), (19, 66081), (20, 66063),

Gene: Magic8_96 Start: 67067, Stop: 66336, Start Num: 4

Candidate Starts for Magic8_96:

(2, 67286), (3, 67184), (Start: 4 @67067 has 272 MA's), (6, 67028), (10, 66914), (11, 66875), (14, 66707), (15, 66686), (16, 66674), (17, 66602), (18, 66488), (19, 66449), (20, 66431),

Gene: Mana_94 Start: 66904, Stop: 66173, Start Num: 4

Candidate Starts for Mana_94:

(Start: 4 @66904 has 272 MA's), (6, 66865), (7, 66838), (10, 66751), (11, 66712), (12, 66670), (14, 66544), (15, 66523), (16, 66511), (17, 66439), (18, 66325), (19, 66286), (20, 66268),

Gene: Manad_96 Start: 67013, Stop: 66282, Start Num: 4

Candidate Starts for Manad_96:

(Start: 4 @67013 has 272 MA's), (6, 66974), (7, 66947), (10, 66860), (11, 66821), (12, 66779), (14, 66653), (15, 66632), (16, 66620), (17, 66548), (18, 66434), (19, 66395), (20, 66377),

Gene: Maru_96 Start: 67109, Stop: 66378, Start Num: 4

Candidate Starts for Maru_96:

(Start: 4 @67109 has 272 MA's), (6, 67070), (7, 67043), (10, 66956), (11, 66917), (12, 66875), (14, 66749), (15, 66728), (16, 66716), (17, 66644), (18, 66530), (19, 66491), (20, 66473),

Gene: Maskar_98 Start: 67284, Stop: 66532, Start Num: 4

Candidate Starts for Maskar_98:

(2, 67503), (3, 67401), (Start: 4 @67284 has 272 MA's), (6, 67245), (10, 67131), (11, 67092), (14, 66924), (15, 66903), (16, 66891), (17, 66819), (18, 66705), (19, 66666), (20, 66648),

Gene: Matalotodo_95 Start: 67748, Stop: 67017, Start Num: 4

Candidate Starts for Matalotodo_95:

(Start: 4 @67748 has 272 MA's), (6, 67709), (7, 67682), (10, 67595), (11, 67556), (12, 67514), (14, 67388), (15, 67367), (16, 67355), (17, 67283), (18, 67169), (19, 67130), (20, 67112),

Gene: Mcshane_99 Start: 67131, Stop: 66400, Start Num: 4

Candidate Starts for Mcshane_99:

(Start: 4 @67131 has 272 MA's), (6, 67092), (7, 67065), (10, 66978), (11, 66939), (12, 66897), (14, 66771), (15, 66750), (16, 66738), (17, 66666), (18, 66552), (19, 66513), (20, 66495),

Gene: Mecca_97 Start: 67315, Stop: 66584, Start Num: 4

Candidate Starts for Mecca_97:

(Start: 4 @67315 has 272 MA's), (6, 67276), (7, 67249), (10, 67162), (11, 67123), (12, 67081), (14, 66955), (15, 66934), (16, 66922), (17, 66850), (18, 66736), (19, 66697), (20, 66679),

Gene: Megamind20_99 Start: 67095, Stop: 66364, Start Num: 4

Candidate Starts for Megamind20_99:

(Start: 4 @67095 has 272 MA's), (6, 67056), (7, 67029), (11, 66903), (12, 66861), (14, 66735), (15, 66714), (16, 66702), (17, 66630), (18, 66516), (19, 66477), (20, 66459),

Gene: Megatron_98 Start: 67434, Stop: 66703, Start Num: 4

Candidate Starts for Megatron_98:

(Start: 4 @67434 has 272 MA's), (6, 67395), (7, 67368), (10, 67281), (11, 67242), (12, 67200), (14, 67074), (15, 67053), (16, 67041), (17, 66969), (18, 66855), (19, 66816), (20, 66798),

Gene: Melc17_94 Start: 67384, Stop: 66653, Start Num: 4

Candidate Starts for Melc17_94:

(Start: 4 @67384 has 272 MA's), (6, 67345), (7, 67318), (10, 67231), (11, 67192), (12, 67150), (14, 67024), (15, 67003), (16, 66991), (17, 66919), (18, 66805), (19, 66766), (20, 66748),

Gene: MelsMeow_95 Start: 66765, Stop: 66013, Start Num: 4

Candidate Starts for MelsMeow_95:

(2, 66984), (3, 66882), (Start: 4 @66765 has 272 MA's), (6, 66726), (10, 66612), (11, 66573), (14, 66405), (15, 66384), (16, 66372), (17, 66300), (18, 66186), (19, 66147), (20, 66129),

Gene: Mesh1_97 Start: 67199, Stop: 66468, Start Num: 4

Candidate Starts for Mesh1_97:

(Start: 4 @67199 has 272 MA's), (6, 67160), (7, 67133), (10, 67046), (11, 67007), (12, 66965), (14, 66839), (15, 66818), (16, 66806), (17, 66734), (18, 66620), (19, 66581), (20, 66563),

Gene: Mesmerelda_97 Start: 67315, Stop: 66584, Start Num: 4

Candidate Starts for Mesmerelda_97:

(Start: 4 @67315 has 272 MA's), (6, 67276), (7, 67249), (10, 67162), (11, 67123), (12, 67081), (14, 66955), (15, 66934), (16, 66922), (17, 66850), (18, 66736), (19, 66697), (20, 66679),

Gene: MichaelPhcott_95 Start: 66696, Stop: 65965, Start Num: 4

Candidate Starts for MichaelPhcott_95:

(2, 66915), (3, 66813), (Start: 4 @66696 has 272 MA's), (6, 66657), (10, 66543), (11, 66504), (14, 66336), (15, 66315), (16, 66303), (17, 66231), (18, 66117), (19, 66078), (20, 66060),

Gene: Mikota_91 Start: 66191, Stop: 65460, Start Num: 4

Candidate Starts for Mikota_91:

(Start: 4 @66191 has 272 MA's), (6, 66152), (7, 66125), (10, 66038), (11, 65999), (14, 65831), (15, 65810), (16, 65798), (17, 65726), (18, 65612), (19, 65573), (20, 65555),

Gene: MiniBoss_92 Start: 65812, Stop: 65081, Start Num: 4

Candidate Starts for MiniBoss_92:

(2, 66031), (3, 65929), (Start: 4 @65812 has 272 MA's), (6, 65773), (7, 65746), (8, 65710), (10, 65659), (11, 65620), (12, 65578), (14, 65452), (15, 65431), (16, 65419), (18, 65233), (19, 65194), (20, 65176),

Gene: MitKao_97 Start: 66917, Stop: 66186, Start Num: 4

Candidate Starts for MitKao_97:

(Start: 4 @66917 has 272 MA's), (6, 66878), (7, 66851), (10, 66764), (11, 66725), (12, 66683), (14, 66557), (15, 66536), (16, 66524), (17, 66452), (18, 66338), (19, 66299), (20, 66281),

Gene: Morgushi_94 Start: 66732, Stop: 66001, Start Num: 4

Candidate Starts for Morgushi_94:

(Start: 4 @66732 has 272 MA's), (6, 66693), (7, 66666), (10, 66579), (11, 66540), (12, 66498), (14, 66372), (15, 66351), (16, 66339), (17, 66267), (18, 66153), (19, 66114), (20, 66096),

Gene: Morty_97 Start: 67302, Stop: 66571, Start Num: 4

Candidate Starts for Morty_97:

(Start: 4 @67302 has 272 MA's), (6, 67263), (7, 67236), (10, 67149), (11, 67110), (12, 67068), (14, 66942), (15, 66921), (16, 66909), (17, 66837), (18, 66723), (19, 66684), (20, 66666),

Gene: Mosaic_94 Start: 66913, Stop: 66182, Start Num: 4

Candidate Starts for Mosaic_94:

(Start: 4 @66913 has 272 MA's), (6, 66874), (7, 66847), (10, 66760), (11, 66721), (12, 66679), (14, 66553), (15, 66532), (16, 66520), (17, 66448), (18, 66334), (19, 66295), (20, 66277),

Gene: MrPhizzler_100 Start: 67212, Stop: 66481, Start Num: 4

Candidate Starts for MrPhizzler_100:

(Start: 4 @67212 has 272 MA's), (6, 67173), (7, 67146), (11, 67020), (12, 66978), (14, 66852), (15, 66831), (16, 66819), (17, 66747), (18, 66633), (19, 66594), (20, 66576),

Gene: Mulan_96 Start: 66946, Stop: 66215, Start Num: 4

Candidate Starts for Mulan_96:

(Start: 4 @66946 has 272 MA's), (6, 66907), (7, 66880), (10, 66793), (11, 66754), (12, 66712), (14, 66586), (15, 66565), (16, 66553), (17, 66481), (18, 66367), (19, 66328), (20, 66310),

Gene: Murdoc_93 Start: 67025, Stop: 66294, Start Num: 4

Candidate Starts for Murdoc_93:

(Start: 4 @67025 has 272 MA's), (6, 66986), (7, 66959), (10, 66872), (11, 66833), (12, 66791), (14, 66665), (15, 66644), (16, 66632), (17, 66560), (18, 66446), (19, 66407), (20, 66389),

Gene: Mutante_98 Start: 66919, Stop: 66188, Start Num: 4

Candidate Starts for Mutante_98:

(Start: 4 @66919 has 272 MA's), (6, 66880), (7, 66853), (10, 66766), (11, 66727), (12, 66685), (14, 66559), (15, 66538), (16, 66526), (17, 66454), (18, 66340), (19, 66301), (20, 66283),

Gene: Nacho_0099 Start: 67746, Stop: 67015, Start Num: 4

Candidate Starts for Nacho_0099:

(Start: 4 @67746 has 272 MA's), (6, 67707), (7, 67680), (10, 67593), (11, 67554), (12, 67512), (14, 67386), (15, 67365), (16, 67353), (17, 67281), (18, 67167), (19, 67128), (20, 67110),

Gene: Nathan_96 Start: 67167, Stop: 66436, Start Num: 4

Candidate Starts for Nathan_96:

(Start: 4 @67167 has 272 MA's), (6, 67128), (7, 67101), (10, 67014), (11, 66975), (12, 66933), (14, 66807), (15, 66786), (16, 66774), (17, 66702), (18, 66588), (19, 66549), (20, 66531),

Gene: Newman_92 Start: 67023, Stop: 66292, Start Num: 4

Candidate Starts for Newman_92:

(Start: 4 @67023 has 272 MA's), (6, 66984), (7, 66957), (10, 66870), (11, 66831), (12, 66789), (14, 66663), (15, 66642), (16, 66630), (17, 66558), (18, 66444), (19, 66405), (20, 66387),

Gene: Nicole21_98 Start: 67053, Stop: 66322, Start Num: 4

Candidate Starts for Nicole21_98:

(Start: 4 @67053 has 272 MA's), (6, 67014), (7, 66987), (10, 66900), (11, 66861), (12, 66819), (14, 66693), (15, 66672), (16, 66660), (17, 66588), (18, 66474), (19, 66435), (20, 66417),

Gene: Numberten_97 Start: 67032, Stop: 66301, Start Num: 4

Candidate Starts for Numberten_97:

(Start: 4 @67032 has 272 MA's), (6, 66993), (7, 66966), (10, 66879), (11, 66840), (12, 66798), (14, 66672), (15, 66651), (16, 66639), (17, 66567), (18, 66453), (19, 66414), (20, 66396),

Gene: Nyala_97 Start: 66768, Stop: 66037, Start Num: 4

Candidate Starts for Nyala_97:

(Start: 4 @66768 has 272 MA's), (6, 66729), (7, 66702), (10, 66615), (11, 66576), (12, 66534), (14, 66408), (15, 66387), (16, 66375), (17, 66303), (18, 66189), (19, 66150), (20, 66132),

Gene: OSmaximus_97 Start: 67321, Stop: 66590, Start Num: 4

Candidate Starts for OSmaximus_97:

(2, 67540), (3, 67438), (Start: 4 @67321 has 272 MA's), (6, 67282), (7, 67255), (8, 67219), (10, 67168), (11, 67129), (14, 66961), (15, 66940), (16, 66928), (17, 66856), (18, 66742), (19, 66703), (20, 66685),

Gene: Olak_99 Start: 67301, Stop: 66570, Start Num: 4

Candidate Starts for Olak_99:

(Start: 4 @67301 has 272 MA's), (6, 67262), (7, 67235), (10, 67148), (11, 67109), (12, 67067), (14, 66941), (15, 66920), (16, 66908), (17, 66836), (18, 66722), (19, 66683), (20, 66665),

Gene: Oline_96 Start: 66923, Stop: 66192, Start Num: 4

Candidate Starts for Oline_96:

(Start: 4 @66923 has 272 MA's), (6, 66884), (7, 66857), (10, 66770), (11, 66731), (12, 66689), (14, 66563), (15, 66542), (16, 66530), (17, 66458), (18, 66344), (19, 66305), (20, 66287),

Gene: Olive_93 Start: 67165, Stop: 66434, Start Num: 4

Candidate Starts for Olive_93:

(Start: 4 @67165 has 272 MA's), (6, 67126), (7, 67099), (10, 67012), (11, 66973), (12, 66931), (14, 66805), (15, 66784), (16, 66772), (17, 66700), (18, 66586), (19, 66547), (20, 66529),

Gene: OliverWalter_96 Start: 67217, Stop: 66486, Start Num: 4

Candidate Starts for OliverWalter_96:

(Start: 4 @67217 has 272 MA's), (6, 67178), (7, 67151), (10, 67064), (11, 67025), (12, 66983), (14, 66857), (15, 66836), (16, 66824), (17, 66752), (18, 66638), (19, 66599), (20, 66581),

Gene: Omniscient_98 Start: 67622, Stop: 66891, Start Num: 4

Candidate Starts for Omniscient_98:

(Start: 4 @67622 has 272 MA's), (6, 67583), (7, 67556), (10, 67469), (11, 67430), (12, 67388), (14, 67262), (15, 67241), (16, 67229), (17, 67157), (18, 67043), (19, 67004), (20, 66986),

Gene: OneBrain_98 Start: 66904, Stop: 66173, Start Num: 4

Candidate Starts for OneBrain_98:

(Start: 4 @66904 has 272 MA's), (6, 66865), (7, 66838), (10, 66751), (11, 66712), (12, 66670), (14, 66544), (15, 66523), (16, 66511), (17, 66439), (18, 66325), (19, 66286), (20, 66268),

Gene: Oosterbaan_97 Start: 67160, Stop: 66429, Start Num: 4

Candidate Starts for Oosterbaan_97:

(Start: 4 @67160 has 272 MA's), (6, 67121), (7, 67094), (10, 67007), (11, 66968), (12, 66926), (14, 66800), (15, 66779), (16, 66767), (17, 66695), (18, 66581), (19, 66542), (20, 66524),

Gene: Orfeu_97 Start: 67281, Stop: 66550, Start Num: 4

Candidate Starts for Orfeu_97:

(Start: 4 @67281 has 272 MA's), (6, 67242), (7, 67215), (10, 67128), (11, 67089), (12, 67047), (14, 66921), (15, 66900), (16, 66888), (17, 66816), (18, 66702), (19, 66663), (20, 66645),

Gene: Orion_95 Start: 66852, Stop: 66121, Start Num: 4

Candidate Starts for Orion_95:

(Start: 4 @66852 has 272 MA's), (6, 66813), (7, 66786), (10, 66699), (11, 66660), (12, 66618), (14, 66492), (15, 66471), (16, 66459), (17, 66387), (18, 66273), (19, 66234), (20, 66216),

Gene: Orwigg_98 Start: 67057, Stop: 66326, Start Num: 4

Candidate Starts for Orwigg_98:

(Start: 4 @67057 has 272 MA's), (6, 67018), (7, 66991), (10, 66904), (11, 66865), (12, 66823), (14, 66697), (15, 66676), (16, 66664), (17, 66592), (18, 66478), (19, 66439), (20, 66421),

Gene: PG1_95 Start: 67424, Stop: 66693, Start Num: 4

Candidate Starts for PG1_95:

(Start: 4 @67424 has 272 MA's), (6, 67385), (7, 67358), (10, 67271), (11, 67232), (12, 67190), (14, 67064), (15, 67043), (16, 67031), (17, 66959), (18, 66845), (19, 66806), (20, 66788),

Gene: Pacifista_99 Start: 67142, Stop: 66411, Start Num: 4

Candidate Starts for Pacifista_99:

(Start: 4 @67142 has 272 MA's), (6, 67103), (7, 67076), (10, 66989), (11, 66950), (12, 66908), (14, 66782), (15, 66761), (16, 66749), (17, 66677), (18, 66563), (19, 66524), (20, 66506),

Gene: PallasAthena_98 Start: 66754, Stop: 66023, Start Num: 4

Candidate Starts for PallasAthena_98:

(Start: 4 @66754 has 272 MA's), (6, 66715), (7, 66688), (10, 66601), (11, 66562), (12, 66520), (14, 66394), (15, 66373), (16, 66361), (17, 66289), (18, 66175), (19, 66136), (20, 66118),

Gene: Phamished_96 Start: 66940, Stop: 66209, Start Num: 4

Candidate Starts for Phamished_96:

(Start: 4 @66940 has 272 MA's), (6, 66901), (7, 66874), (10, 66787), (11, 66748), (12, 66706), (14, 66580), (15, 66559), (16, 66547), (17, 66475), (18, 66361), (19, 66322), (20, 66304),

Gene: Phareon_94 Start: 66465, Stop: 65734, Start Num: 4

Candidate Starts for Phareon_94:

(Start: 4 @66465 has 272 MA's), (6, 66426), (7, 66399), (10, 66312), (11, 66273), (12, 66231), (14, 66105), (15, 66084), (16, 66072), (17, 66000), (18, 65886), (19, 65847), (20, 65829),

Gene: PhatCats2014_96 Start: 67425, Stop: 66694, Start Num: 4

Candidate Starts for PhatCats2014_96:

(Start: 4 @67425 has 272 MA's), (6, 67386), (7, 67359), (10, 67272), (11, 67233), (12, 67191), (14, 67065), (15, 67044), (16, 67032), (17, 66960), (18, 66846), (19, 66807), (20, 66789),

Gene: PhatLouie_99 Start: 67298, Stop: 66567, Start Num: 4

Candidate Starts for PhatLouie_99:

(Start: 4 @67298 has 272 MA's), (6, 67259), (7, 67232), (10, 67145), (11, 67106), (12, 67064), (14, 66938), (15, 66917), (16, 66905), (17, 66833), (18, 66719), (19, 66680), (20, 66662),

Gene: PhenghisKhan_97 Start: 66929, Stop: 66198, Start Num: 4

Candidate Starts for PhenghisKhan_97:

(Start: 4 @66929 has 272 MA's), (6, 66890), (7, 66863), (10, 66776), (11, 66737), (12, 66695), (14, 66569), (15, 66548), (16, 66536), (17, 66464), (18, 66350), (19, 66311), (20, 66293),

Gene: Pherdinand_98 Start: 67144, Stop: 66413, Start Num: 4

Candidate Starts for Pherdinand_98:

(Start: 4 @67144 has 272 MA's), (6, 67105), (7, 67078), (10, 66991), (11, 66952), (12, 66910), (14, 66784), (15, 66763), (16, 66751), (17, 66679), (18, 66565), (19, 66526), (20, 66508),

Gene: Phergie_97 Start: 66918, Stop: 66187, Start Num: 4

Candidate Starts for Phergie_97:

(Start: 4 @66918 has 272 MA's), (6, 66879), (7, 66852), (10, 66765), (11, 66726), (12, 66684), (14, 66558), (15, 66537), (16, 66525), (17, 66453), (18, 66339), (19, 66300), (20, 66282),

Gene: Phipps_94 Start: 66718, Stop: 65987, Start Num: 4

Candidate Starts for Phipps_94:

(Start: 4 @66718 has 272 MA's), (6, 66679), (7, 66652), (10, 66565), (11, 66526), (12, 66484), (14, 66358), (15, 66337), (16, 66325), (17, 66253), (18, 66139), (19, 66100), (20, 66082),

Gene: Phleuron_94 Start: 66729, Stop: 65998, Start Num: 4

Candidate Starts for Phleuron_94:

(2, 66948), (3, 66846), (Start: 4 @66729 has 272 MA's), (6, 66690), (10, 66576), (11, 66537), (14, 66369), (15, 66348), (16, 66336), (17, 66264), (18, 66150), (19, 66111), (20, 66093),

Gene: PhrankReynolds_95 Start: 66923, Stop: 66192, Start Num: 4

Candidate Starts for PhrankReynolds_95:

(Start: 4 @66923 has 272 MA's), (6, 66884), (7, 66857), (10, 66770), (11, 66731), (12, 66689), (14, 66563), (15, 66542), (16, 66530), (17, 66458), (18, 66344), (19, 66305), (20, 66287),

Gene: PhrodoBaggins_99 Start: 67298, Stop: 66567, Start Num: 4

Candidate Starts for PhrodoBaggins_99:

(Start: 4 @67298 has 272 MA's), (6, 67259), (7, 67232), (10, 67145), (11, 67106), (12, 67064), (14, 66938), (15, 66917), (16, 66905), (17, 66833), (18, 66719), (19, 66680), (20, 66662),

Gene: Phunky_94 Start: 66800, Stop: 66069, Start Num: 4

Candidate Starts for Phunky_94:

(Start: 4 @66800 has 272 MA's), (6, 66761), (7, 66734), (10, 66647), (11, 66608), (12, 66566), (14, 66440), (15, 66419), (16, 66407), (17, 66335), (18, 66221), (19, 66182), (20, 66164),

Gene: Piglet_0096 Start: 67417, Stop: 66686, Start Num: 4

Candidate Starts for Piglet_0096:

(Start: 4 @67417 has 272 MA's), (6, 67378), (7, 67351), (10, 67264), (11, 67225), (12, 67183), (14, 67057), (15, 67036), (16, 67024), (17, 66952), (18, 66838), (19, 66799), (20, 66781),

Gene: PinheadLarry_96 Start: 67069, Stop: 66338, Start Num: 4

Candidate Starts for PinheadLarry_96:

(Start: 4 @67069 has 272 MA's), (6, 67030), (7, 67003), (10, 66916), (11, 66877), (12, 66835), (14, 66709), (15, 66688), (16, 66676), (17, 66604), (18, 66490), (19, 66451), (20, 66433),

Gene: Pinkman_96 Start: 67141, Stop: 66410, Start Num: 4

Candidate Starts for Pinkman_96:

(Start: 4 @67141 has 272 MA's), (6, 67102), (7, 67075), (11, 66949), (12, 66907), (14, 66781), (15, 66760), (16, 66748), (17, 66676), (18, 66562), (19, 66523), (20, 66505),

Gene: Pipsqueak_94 Start: 66752, Stop: 66021, Start Num: 4

Candidate Starts for Pipsqueak_94:

(Start: 4 @66752 has 272 MA's), (6, 66713), (7, 66686), (10, 66599), (11, 66560), (14, 66392), (15, 66371), (16, 66359), (17, 66287), (18, 66173), (19, 66134), (20, 66116),

Gene: Placalicious_94 Start: 67510, Stop: 66779, Start Num: 4

Candidate Starts for Placalicious_94:

(Start: 4 @67510 has 272 MA's), (6, 67471), (7, 67444), (10, 67357), (11, 67318), (12, 67276), (14, 67150), (15, 67129), (16, 67117), (17, 67045), (18, 66931), (19, 66892), (20, 66874),

Gene: Plata_94 Start: 66732, Stop: 66001, Start Num: 4

Candidate Starts for Plata_94:

(Start: 4 @66732 has 272 MA's), (6, 66693), (7, 66666), (10, 66579), (11, 66540), (12, 66498), (14, 66372), (15, 66351), (16, 66339), (17, 66267), (18, 66153), (19, 66114), (20, 66096),

Gene: Plmatters_94 Start: 66743, Stop: 66012, Start Num: 4

Candidate Starts for Plmatters_94:

(Start: 4 @66743 has 272 MA's), (6, 66704), (7, 66677), (10, 66590), (11, 66551), (12, 66509), (14, 66383), (15, 66362), (16, 66350), (17, 66278), (18, 66164), (19, 66125), (20, 66107),

Gene: Podrick_95 Start: 66831, Stop: 66100, Start Num: 4

Candidate Starts for Podrick_95:

(Start: 4 @66831 has 272 MA's), (6, 66792), (7, 66765), (10, 66678), (11, 66639), (12, 66597), (14, 66471), (15, 66450), (16, 66438), (17, 66366), (18, 66252), (19, 66213), (20, 66195),

Gene: Potter_91 Start: 66752, Stop: 66021, Start Num: 4

Candidate Starts for Potter_91:

(Start: 4 @66752 has 272 MA's), (6, 66713), (7, 66686), (10, 66599), (11, 66560), (12, 66518), (14, 66392), (15, 66371), (16, 66359), (17, 66287), (18, 66173), (19, 66134), (20, 66116),

Gene: Prickles_97 Start: 66878, Stop: 66147, Start Num: 4

Candidate Starts for Prickles_97:

(Start: 4 @66878 has 272 MA's), (6, 66839), (7, 66812), (10, 66725), (11, 66686), (12, 66644), (14, 66518), (15, 66497), (16, 66485), (17, 66413), (18, 66299), (19, 66260), (20, 66242),

Gene: ProfessorX_94 Start: 66511, Stop: 65780, Start Num: 4

Candidate Starts for ProfessorX_94:

(Start: 4 @66511 has 272 MA's), (6, 66472), (7, 66445), (10, 66358), (11, 66319), (12, 66277), (14, 66151), (15, 66130), (16, 66118), (17, 66046), (18, 65932), (19, 65893), (20, 65875),

Gene: Puhltonio_92 Start: 66748, Stop: 66017, Start Num: 4

Candidate Starts for Puhltonio_92:

(Start: 4 @66748 has 272 MA's), (6, 66709), (7, 66682), (10, 66595), (11, 66556), (12, 66514), (14, 66388), (15, 66367), (16, 66355), (17, 66283), (18, 66169), (19, 66130), (20, 66112),

Gene: QueenBeane_97 Start: 67075, Stop: 66344, Start Num: 4

Candidate Starts for QueenBeane_97:

(Start: 4 @67075 has 272 MA's), (6, 67036), (7, 67009), (10, 66922), (11, 66883), (12, 66841), (14, 66715), (15, 66694), (16, 66682), (17, 66610), (18, 66496), (19, 66457), (20, 66439),

Gene: Quisquilliae_99 Start: 67086, Stop: 66355, Start Num: 4

Candidate Starts for Quisquilliae_99:

(Start: 4 @67086 has 272 MA's), (6, 67047), (7, 67020), (10, 66933), (11, 66894), (12, 66852), (14, 66726), (15, 66705), (16, 66693), (17, 66621), (18, 66507), (19, 66468), (20, 66450),

Gene: RedMaple_95 Start: 67409, Stop: 66678, Start Num: 4

Candidate Starts for RedMaple_95:

(2, 67628), (3, 67526), (Start: 4 @67409 has 272 MA's), (6, 67370), (7, 67343), (8, 67307), (10, 67256), (11, 67217), (14, 67049), (15, 67028), (16, 67016), (17, 66944), (18, 66830), (19, 66791), (20, 66773),

Gene: RedRaider89_95 Start: 67131, Stop: 66400, Start Num: 4

Candidate Starts for RedRaider89_95:

(Start: 4 @67131 has 272 MA's), (6, 67092), (7, 67065), (10, 66978), (11, 66939), (12, 66897), (14, 66771), (15, 66750), (16, 66738), (17, 66666), (18, 66552), (19, 66513), (20, 66495),

Gene: Ricotta_98 Start: 66771, Stop: 66040, Start Num: 4

Candidate Starts for Ricotta_98:

(Start: 4 @66771 has 272 MA's), (6, 66732), (7, 66705), (10, 66618), (11, 66579), (12, 66537), (14, 66411), (15, 66390), (16, 66378), (17, 66306), (18, 66192), (19, 66153), (20, 66135),

Gene: Riggan_98 Start: 67256, Stop: 66525, Start Num: 4

Candidate Starts for Riggan_98:

(Start: 4 @67256 has 272 MA's), (6, 67217), (7, 67190), (10, 67103), (11, 67064), (12, 67022), (14, 66896), (15, 66875), (16, 66863), (17, 66791), (18, 66677), (19, 66638), (20, 66620),

Gene: Rimu_96 Start: 67235, Stop: 66504, Start Num: 4

Candidate Starts for Rimu_96:

(Start: 4 @67235 has 272 MA's), (6, 67196), (7, 67169), (11, 67043), (12, 67001), (14, 66875), (15, 66854), (16, 66842), (17, 66770), (18, 66656), (19, 66617), (20, 66599),

Gene: Riverton_95 Start: 66759, Stop: 66028, Start Num: 4

Candidate Starts for Riverton_95:

(Start: 4 @66759 has 272 MA's), (6, 66720), (7, 66693), (10, 66606), (11, 66567), (12, 66525), (14, 66399), (15, 66378), (16, 66366), (17, 66294), (18, 66180), (19, 66141), (20, 66123),

Gene: Robyn_98 Start: 67147, Stop: 66548, Start Num: 9

Candidate Starts for Robyn_98:

(Start: 9 @67147 has 1 MA's), (10, 67126), (11, 67087), (12, 67045), (14, 66919), (15, 66898), (16, 66886), (17, 66814), (18, 66700), (19, 66661), (20, 66643),

Gene: Roliet_94 Start: 66115, Stop: 65384, Start Num: 4

Candidate Starts for Roliet_94:

(Start: 4 @66115 has 272 MA's), (6, 66076), (7, 66049), (10, 65962), (11, 65923), (14, 65755), (15, 65734), (16, 65722), (18, 65536), (19, 65497), (20, 65479),

Gene: Roscoe_95 Start: 67027, Stop: 66401, Start Num: 4

Candidate Starts for Roscoe_95:

(2, 67246), (3, 67144), (Start: 4 @67027 has 272 MA's), (10, 66979), (11, 66940), (12, 66898), (14, 66772), (15, 66751), (16, 66739), (17, 66667), (18, 66553), (19, 66514), (20, 66496),

Gene: Roy17_94 Start: 66481, Stop: 65750, Start Num: 4

Candidate Starts for Roy17_94:

(Start: 4 @66481 has 272 MA's), (6, 66442), (7, 66415), (11, 66289), (12, 66247), (14, 66121), (15, 66100), (16, 66088), (17, 66016), (18, 65902), (19, 65863), (20, 65845),

Gene: SDcharge11_95 Start: 66131, Stop: 65400, Start Num: 4

Candidate Starts for SDcharge11_95:

(2, 66350), (3, 66248), (Start: 4 @66131 has 272 MA's), (6, 66092), (7, 66065), (8, 66029), (10, 65978), (11, 65939), (14, 65771), (15, 65750), (16, 65738), (18, 65552), (19, 65513), (20, 65495),

Gene: SallyH_100 Start: 67015, Stop: 66284, Start Num: 4

Candidate Starts for SallyH_100:

(Start: 4 @67015 has 272 MA's), (6, 66976), (7, 66949), (10, 66862), (11, 66823), (12, 66781), (14, 66655), (15, 66634), (16, 66622), (17, 66550), (18, 66436), (19, 66397), (20, 66379),

Gene: Samaymay_97 Start: 67075, Stop: 66344, Start Num: 4

Candidate Starts for Samaymay_97:

(Start: 4 @67075 has 272 MA's), (6, 67036), (7, 67009), (10, 66922), (11, 66883), (12, 66841), (14, 66715), (15, 66694), (16, 66682), (17, 66610), (18, 66496), (19, 66457), (20, 66439),

Gene: SassyCat97_95 Start: 66743, Stop: 66012, Start Num: 4

Candidate Starts for SassyCat97_95:

(Start: 4 @66743 has 272 MA's), (6, 66704), (7, 66677), (10, 66590), (11, 66551), (12, 66509), (14, 66383), (15, 66362), (16, 66350), (17, 66278), (18, 66164), (19, 66125), (20, 66107),

Gene: Schadenfreude_97 Start: 66792, Stop: 66061, Start Num: 4

Candidate Starts for Schadenfreude_97:

(2, 67011), (3, 66909), (Start: 4 @66792 has 272 MA's), (6, 66753), (7, 66726), (8, 66690), (10, 66639), (11, 66600), (14, 66432), (15, 66411), (16, 66399), (17, 66327), (18, 66213), (19, 66174), (20, 66156),

Gene: Schueller_95 Start: 67016, Stop: 66285, Start Num: 4

Candidate Starts for Schueller_95:

(2, 67235), (3, 67133), (Start: 4 @67016 has 272 MA's), (6, 66977), (10, 66863), (11, 66824), (14, 66656), (15, 66635), (16, 66623), (17, 66551), (18, 66437), (19, 66398), (20, 66380),

Gene: Scoot17C_97 Start: 66857, Stop: 66126, Start Num: 4

Candidate Starts for Scoot17C_97:

(Start: 4 @66857 has 272 MA's), (6, 66818), (7, 66791), (10, 66704), (11, 66665), (12, 66623), (14, 66497), (15, 66476), (16, 66464), (17, 66392), (18, 66278), (19, 66239), (20, 66221),

Gene: Scrick_98 Start: 67126, Stop: 66395, Start Num: 4

Candidate Starts for Scrick_98:

(Start: 4 @67126 has 272 MA's), (6, 67087), (7, 67060), (10, 66973), (11, 66934), (12, 66892), (14, 66766), (15, 66745), (16, 66733), (17, 66661), (18, 66547), (19, 66508), (20, 66490),

Gene: Selr12_101 Start: 67167, Stop: 66436, Start Num: 4

Candidate Starts for Selr12_101:

(Start: 4 @67167 has 272 MA's), (6, 67128), (7, 67101), (10, 67014), (11, 66975), (12, 66933), (14, 66807), (15, 66786), (16, 66774), (17, 66702), (18, 66588), (19, 66549), (20, 66531),

Gene: Serendipity_96 Start: 67229, Stop: 66498, Start Num: 4

Candidate Starts for Serendipity_96:

(Start: 4 @67229 has 272 MA's), (6, 67190), (7, 67163), (10, 67076), (11, 67037), (12, 66995), (14, 66869), (15, 66848), (16, 66836), (17, 66764), (18, 66650), (19, 66611), (20, 66593),

Gene: Serpentine_0099 Start: 67309, Stop: 66578, Start Num: 4

Candidate Starts for Serpentine_0099:

(Start: 4 @67309 has 272 MA's), (6, 67270), (7, 67243), (10, 67156), (11, 67117), (12, 67075), (14, 66949), (15, 66928), (16, 66916), (17, 66844), (18, 66730), (19, 66691), (20, 66673),

Gene: ShadowBud_98 Start: 67083, Stop: 66352, Start Num: 4

Candidate Starts for ShadowBud_98:

(Start: 4 @67083 has 272 MA's), (6, 67044), (7, 67017), (10, 66930), (11, 66891), (12, 66849), (14, 66723), (15, 66702), (16, 66690), (17, 66618), (18, 66504), (19, 66465), (20, 66447),

Gene: Sheila_91 Start: 66309, Stop: 65578, Start Num: 4

Candidate Starts for Sheila_91:

(Start: 4 @66309 has 272 MA's), (6, 66270), (7, 66243), (10, 66156), (11, 66117), (12, 66075), (14, 65949), (15, 65928), (16, 65916), (17, 65844), (18, 65730), (19, 65691), (20, 65673),

Gene: ShiVal_96 Start: 66780, Stop: 66049, Start Num: 4

Candidate Starts for ShiVal_96:

(Start: 4 @66780 has 272 MA's), (6, 66741), (7, 66714), (10, 66627), (11, 66588), (12, 66546), (14, 66420), (15, 66399), (16, 66387), (17, 66315), (18, 66201), (19, 66162), (20, 66144),

Gene: Sigman_96 Start: 66736, Stop: 66005, Start Num: 4

Candidate Starts for Sigman_96:

(Start: 4 @66736 has 272 MA's), (6, 66697), (7, 66670), (10, 66583), (11, 66544), (12, 66502), (14, 66376), (15, 66355), (16, 66343), (17, 66271), (18, 66157), (19, 66118), (20, 66100),

Gene: SilverBell_98 Start: 67190, Stop: 66459, Start Num: 4

Candidate Starts for SilverBell_98:

(Start: 4 @67190 has 272 MA's), (6, 67151), (7, 67124), (10, 67037), (11, 66998), (12, 66956), (14, 66830), (15, 66809), (16, 66797), (17, 66725), (18, 66611), (19, 66572), (20, 66554),

Gene: Simielle_97 Start: 66722, Stop: 65991, Start Num: 4

Candidate Starts for Simielle_97:

(Start: 4 @66722 has 272 MA's), (6, 66683), (7, 66656), (10, 66569), (11, 66530), (12, 66488), (14, 66362), (15, 66341), (16, 66329), (17, 66257), (18, 66143), (19, 66104), (20, 66086),

Gene: SirBeauregard_97 Start: 67044, Stop: 66292, Start Num: 4

Candidate Starts for SirBeauregard_97:

(2, 67263), (3, 67161), (Start: 4 @67044 has 272 MA's), (6, 67005), (10, 66891), (11, 66852), (14, 66684), (15, 66663), (16, 66651), (17, 66579), (18, 66465), (19, 66426), (20, 66408),

Gene: Skippy_97 Start: 67151, Stop: 66420, Start Num: 4

Candidate Starts for Skippy_97:

(Start: 4 @67151 has 272 MA's), (6, 67112), (7, 67085), (10, 66998), (11, 66959), (12, 66917), (14, 66791), (15, 66770), (16, 66758), (17, 66686), (18, 66572), (19, 66533), (20, 66515),

Gene: Slatt_99 Start: 67407, Stop: 66676, Start Num: 4

Candidate Starts for Slatt_99:

(Start: 4 @67407 has 272 MA's), (6, 67368), (7, 67341), (10, 67254), (11, 67215), (12, 67173), (14, 67047), (15, 67026), (16, 67014), (17, 66942), (18, 66828), (19, 66789), (20, 66771),

Gene: Soile_98 Start: 67276, Stop: 66545, Start Num: 4

Candidate Starts for Soile_98:

(Start: 4 @67276 has 272 MA's), (6, 67237), (7, 67210), (10, 67123), (11, 67084), (12, 67042), (14, 66916), (15, 66895), (16, 66883), (17, 66811), (18, 66697), (19, 66658), (20, 66640),

Gene: Solosis_95 Start: 66744, Stop: 66013, Start Num: 4

Candidate Starts for Solosis_95:

(Start: 4 @66744 has 272 MA's), (6, 66705), (7, 66678), (10, 66591), (11, 66552), (12, 66510), (14, 66384), (15, 66363), (16, 66351), (17, 66279), (18, 66165), (19, 66126), (20, 66108),

Gene: Sophia_95 Start: 66731, Stop: 66000, Start Num: 4

Candidate Starts for Sophia_95:

(Start: 4 @66731 has 272 MA's), (6, 66692), (7, 66665), (10, 66578), (11, 66539), (12, 66497), (14, 66371), (15, 66350), (16, 66338), (17, 66266), (18, 66152), (19, 66113), (20, 66095),

Gene: Soto_93 Start: 66172, Stop: 65441, Start Num: 4

Candidate Starts for Soto_93:

(Start: 4 @66172 has 272 MA's), (6, 66133), (7, 66106), (10, 66019), (11, 65980), (14, 65812), (15, 65791), (16, 65779), (17, 65707), (18, 65593), (19, 65554), (20, 65536),

Gene: Spartan300_96 Start: 66993, Stop: 66262, Start Num: 4

Candidate Starts for Spartan300_96:

(Start: 4 @66993 has 272 MA's), (6, 66954), (7, 66927), (10, 66840), (11, 66801), (12, 66759), (14, 66633), (15, 66612), (16, 66600), (17, 66528), (18, 66414), (19, 66375), (20, 66357),

Gene: Squid_96 Start: 67021, Stop: 66290, Start Num: 4

Candidate Starts for Squid_96:

(Start: 4 @67021 has 272 MA's), (6, 66982), (7, 66955), (10, 66868), (11, 66829), (12, 66787), (14, 66661), (15, 66640), (16, 66628), (17, 66556), (18, 66442), (19, 66403), (20, 66385),

Gene: Squiggle_96 Start: 66750, Stop: 66019, Start Num: 4

Candidate Starts for Squiggle_96:

(Start: 4 @66750 has 272 MA's), (6, 66711), (7, 66684), (10, 66597), (11, 66558), (12, 66516), (14, 66390), (15, 66369), (16, 66357), (17, 66285), (18, 66171), (19, 66132), (20, 66114),

Gene: Struggle_97 Start: 66848, Stop: 66117, Start Num: 4

Candidate Starts for Struggle_97:

(Start: 4 @66848 has 272 MA's), (6, 66809), (7, 66782), (10, 66695), (11, 66656), (12, 66614), (14, 66488), (15, 66467), (16, 66455), (17, 66383), (18, 66269), (19, 66230), (20, 66212),

Gene: Suffolk_92 Start: 66677, Stop: 65946, Start Num: 4

Candidate Starts for Suffolk_92:

(Start: 4 @66677 has 272 MA's), (6, 66638), (7, 66611), (10, 66524), (11, 66485), (12, 66443), (14, 66317), (15, 66296), (16, 66284), (17, 66212), (18, 66098), (19, 66059), (20, 66041),

Gene: Surely_97 Start: 67313, Stop: 66582, Start Num: 4

Candidate Starts for Surely_97:

(Start: 4 @67313 has 272 MA's), (6, 67274), (7, 67247), (11, 67121), (12, 67079), (14, 66953), (15, 66932), (16, 66920), (17, 66848), (18, 66734), (19, 66695), (20, 66677),

Gene: Swiphy_99 Start: 67298, Stop: 66567, Start Num: 4

Candidate Starts for Swiphy_99:

(Start: 4 @67298 has 272 MA's), (6, 67259), (7, 67232), (10, 67145), (11, 67106), (12, 67064), (14, 66938), (15, 66917), (16, 66905), (17, 66833), (18, 66719), (19, 66680), (20, 66662),

Gene: Swish_98 Start: 67160, Stop: 66429, Start Num: 4

Candidate Starts for Swish_98:

(Start: 4 @67160 has 272 MA's), (6, 67121), (7, 67094), (10, 67007), (11, 66968), (12, 66926), (14, 66800), (15, 66779), (16, 66767), (17, 66695), (18, 66581), (19, 66542), (20, 66524),

Gene: TallGrassMM_96 Start: 66809, Stop: 66078, Start Num: 4

Candidate Starts for TallGrassMM_96:

(Start: 4 @66809 has 272 MA's), (6, 66770), (7, 66743), (10, 66656), (11, 66617), (12, 66575), (14, 66449), (15, 66428), (16, 66416), (17, 66344), (18, 66230), (19, 66191), (20, 66173),

Gene: Telesworld_95 Start: 66883, Stop: 66152, Start Num: 4

Candidate Starts for Telesworld_95:

(Start: 4 @66883 has 272 MA's), (6, 66844), (7, 66817), (10, 66730), (11, 66691), (12, 66649), (14, 66523), (15, 66502), (16, 66490), (17, 66418), (18, 66304), (19, 66265), (20, 66247),

Gene: Thora_95 Start: 67264, Stop: 66533, Start Num: 4

Candidate Starts for Thora_95:

(Start: 4 @67264 has 272 MA's), (6, 67225), (7, 67198), (10, 67111), (11, 67072), (12, 67030), (14, 66904), (15, 66883), (16, 66871), (17, 66799), (18, 66685), (19, 66646), (20, 66628),

Gene: ThreeOh3D2_98 Start: 67417, Stop: 66686, Start Num: 4

Candidate Starts for ThreeOh3D2_98:

(Start: 4 @67417 has 272 MA's), (6, 67378), (7, 67351), (10, 67264), (11, 67225), (12, 67183), (14, 67057), (15, 67036), (16, 67024), (17, 66952), (18, 66838), (19, 66799), (20, 66781),

Gene: Thunderbird_97 Start: 67005, Stop: 66274, Start Num: 4

Candidate Starts for Thunderbird_97:

(Start: 4 @67005 has 272 MA's), (6, 66966), (7, 66939), (10, 66852), (11, 66813), (12, 66771), (14, 66645), (15, 66624), (16, 66612), (17, 66540), (18, 66426), (19, 66387), (20, 66369),

Gene: Timmi_95 Start: 66780, Stop: 66049, Start Num: 4

Candidate Starts for Timmi_95:

(Start: 4 @66780 has 272 MA's), (6, 66741), (7, 66714), (10, 66627), (11, 66588), (12, 66546), (14, 66420), (15, 66399), (16, 66387), (17, 66315), (18, 66201), (19, 66162), (20, 66144),

Gene: TomBombadil_97 Start: 67305, Stop: 66574, Start Num: 4

Candidate Starts for TomBombadil_97:

(Start: 4 @67305 has 272 MA's), (6, 67266), (7, 67239), (10, 67152), (11, 67113), (12, 67071), (14, 66945), (15, 66924), (16, 66912), (17, 66840), (18, 66726), (19, 66687), (20, 66669),

Gene: Tomlarah_97 Start: 67613, Stop: 66882, Start Num: 4

Candidate Starts for Tomlarah_97:

(Start: 4 @67613 has 272 MA's), (6, 67574), (7, 67547), (10, 67460), (11, 67421), (12, 67379), (14, 67253), (15, 67232), (16, 67220), (17, 67148), (18, 67034), (19, 66995), (20, 66977),

Gene: Toni_96 Start: 67209, Stop: 66478, Start Num: 4

Candidate Starts for Toni_96:

(Start: 4 @67209 has 272 MA's), (6, 67170), (7, 67143), (10, 67056), (11, 67017), (12, 66975), (14, 66849), (15, 66828), (16, 66816), (17, 66744), (18, 66630), (19, 66591), (20, 66573),

Gene: TooFast2Furius_97 Start: 66927, Stop: 66196, Start Num: 4

Candidate Starts for TooFast2Furius_97:

(Start: 4 @66927 has 272 MA's), (6, 66888), (7, 66861), (10, 66774), (11, 66735), (12, 66693), (14, 66567), (15, 66546), (16, 66534), (17, 66462), (18, 66348), (19, 66309), (20, 66291),

Gene: Tooj_94 Start: 66423, Stop: 65692, Start Num: 4

Candidate Starts for Tooj_94:

(Start: 4 @66423 has 272 MA's), (6, 66384), (7, 66357), (10, 66270), (11, 66231), (12, 66189), (14, 66063), (15, 66042), (16, 66030), (18, 65844), (19, 65805), (20, 65787),

Gene: True_98 Start: 67125, Stop: 66394, Start Num: 4

Candidate Starts for True_98:

(Start: 4 @67125 has 272 MA's), (6, 67086), (7, 67059), (10, 66972), (11, 66933), (12, 66891), (14, 66765), (15, 66744), (16, 66732), (17, 66660), (18, 66546), (19, 66507), (20, 66489),

Gene: Trypo_97 Start: 67477, Stop: 66746, Start Num: 4

Candidate Starts for Trypo_97:

(Start: 4 @67477 has 272 MA's), (6, 67438), (7, 67411), (10, 67324), (11, 67285), (12, 67243), (14, 67117), (15, 67096), (16, 67084), (17, 67012), (18, 66898), (19, 66859), (20, 66841),

Gene: TyrionL_97 Start: 66839, Stop: 66108, Start Num: 4

Candidate Starts for TyrionL_97:

(2, 67058), (3, 66956), (Start: 4 @66839 has 272 MA's), (6, 66800), (10, 66686), (11, 66647), (14, 66479), (15, 66458), (16, 66446), (17, 66374), (18, 66260), (19, 66221), (20, 66203),

Gene: UAch1_97 Start: 66830, Stop: 66099, Start Num: 4

Candidate Starts for UAch1_97:

(Start: 4 @66830 has 272 MA's), (6, 66791), (7, 66764), (10, 66677), (11, 66638), (12, 66596), (14, 66470), (15, 66449), (16, 66437), (17, 66365), (18, 66251), (19, 66212), (20, 66194),

Gene: UncleHowie_93 Start: 66441, Stop: 65710, Start Num: 4

Candidate Starts for UncleHowie_93:

(Start: 4 @66441 has 272 MA's), (6, 66402), (7, 66375), (10, 66288), (11, 66249), (12, 66207), (14, 66081), (15, 66060), (16, 66048), (17, 65976), (18, 65862), (19, 65823), (20, 65805),

Gene: Usavi_97 Start: 67603, Stop: 66872, Start Num: 4

Candidate Starts for Usavi_97:

(Start: 4 @67603 has 272 MA's), (6, 67564), (7, 67537), (10, 67450), (11, 67411), (12, 67369), (14, 67243), (15, 67222), (16, 67210), (17, 67138), (18, 67024), (19, 66985), (20, 66967),

Gene: Vaishali24_97 Start: 66820, Stop: 66230, Start Num: 4

Candidate Starts for Vaishali24_97:

(2, 67039), (3, 66937), (Start: 4 @66820 has 272 MA's), (5, 66799), (11, 66760), (12, 66727), (14, 66601), (15, 66580), (16, 66568), (17, 66496), (18, 66382), (19, 66343), (20, 66325),

Gene: Valjean_95 Start: 66985, Stop: 66254, Start Num: 4

Candidate Starts for Valjean_95:

(Start: 4 @66985 has 272 MA's), (6, 66946), (7, 66919), (11, 66793), (12, 66751), (14, 66625), (15, 66604), (16, 66592), (17, 66520), (18, 66406), (19, 66367), (20, 66349),

Gene: Vaticameos_94 Start: 65312, Stop: 64581, Start Num: 4

Candidate Starts for Vaticameos_94:

(Start: 4 @65312 has 272 MA's), (6, 65273), (7, 65246), (10, 65159), (11, 65120), (12, 65078), (14, 64952), (15, 64931), (16, 64919), (17, 64847), (18, 64733), (19, 64694), (20, 64676),

Gene: Veritas_96 Start: 66920, Stop: 66189, Start Num: 4

Candidate Starts for Veritas_96:

(2, 67139), (3, 67037), (Start: 4 @66920 has 272 MA's), (6, 66881), (10, 66767), (11, 66728), (14, 66560), (15, 66539), (16, 66527), (17, 66455), (18, 66341), (19, 66302), (20, 66284),

Gene: Virapocalypse_98 Start: 67107, Stop: 66376, Start Num: 4
Candidate Starts for Virapocalypse_98:
(Start: 4 @67107 has 272 MA's), (6, 67068), (7, 67041), (10, 66954), (11, 66915), (12, 66873), (14, 66747), (15, 66726), (16, 66714), (17, 66642), (18, 66528), (19, 66489), (20, 66471),

Gene: Virgeve_95 Start: 66725, Stop: 65994, Start Num: 4
Candidate Starts for Virgeve_95:
(Start: 4 @66725 has 272 MA's), (6, 66686), (7, 66659), (11, 66533), (12, 66491), (14, 66365), (15, 66344), (16, 66332), (17, 66260), (18, 66146), (19, 66107), (20, 66089),

Gene: Vista_96 Start: 66919, Stop: 66188, Start Num: 4
Candidate Starts for Vista_96:
(Start: 4 @66919 has 272 MA's), (6, 66880), (7, 66853), (10, 66766), (11, 66727), (12, 66685), (14, 66559), (15, 66538), (16, 66526), (17, 66454), (18, 66340), (19, 66301), (20, 66283),

Gene: Vortex_95 Start: 67025, Stop: 66294, Start Num: 4
Candidate Starts for Vortex_95:
(Start: 4 @67025 has 272 MA's), (6, 66986), (7, 66959), (10, 66872), (11, 66833), (12, 66791), (14, 66665), (15, 66644), (16, 66632), (17, 66560), (18, 66446), (19, 66407), (20, 66389),

Gene: Wallhey_98 Start: 67024, Stop: 66293, Start Num: 4
Candidate Starts for Wallhey_98:
(Start: 4 @67024 has 272 MA's), (6, 66985), (7, 66958), (11, 66832), (12, 66790), (14, 66664), (15, 66643), (16, 66631), (17, 66559), (18, 66445), (19, 66406), (20, 66388),

Gene: Waterdiva_98 Start: 67291, Stop: 66560, Start Num: 4
Candidate Starts for Waterdiva_98:
(Start: 4 @67291 has 272 MA's), (6, 67252), (7, 67225), (10, 67138), (11, 67099), (12, 67057), (14, 66931), (15, 66910), (16, 66898), (17, 66826), (18, 66712), (19, 66673), (20, 66655),

Gene: Weher20_94 Start: 67363, Stop: 66632, Start Num: 4
Candidate Starts for Weher20_94:
(Start: 4 @67363 has 272 MA's), (6, 67324), (7, 67297), (10, 67210), (11, 67171), (12, 67129), (14, 67003), (15, 66982), (16, 66970), (17, 66898), (18, 66784), (19, 66745), (20, 66727),

Gene: Windsor_96 Start: 67050, Stop: 66298, Start Num: 4
Candidate Starts for Windsor_96:
(2, 67269), (3, 67167), (Start: 4 @67050 has 272 MA's), (6, 67011), (10, 66897), (11, 66858), (14, 66690), (15, 66669), (16, 66657), (17, 66585), (18, 66471), (19, 66432), (20, 66414),

Gene: Xavier_96 Start: 66918, Stop: 66187, Start Num: 4
Candidate Starts for Xavier_96:
(Start: 4 @66918 has 272 MA's), (6, 66879), (7, 66852), (10, 66765), (11, 66726), (12, 66684), (14, 66558), (15, 66537), (16, 66525), (17, 66453), (18, 66339), (19, 66300), (20, 66282),

Gene: Yoshand_98 Start: 67143, Stop: 66412, Start Num: 4
Candidate Starts for Yoshand_98:
(Start: 4 @67143 has 272 MA's), (6, 67104), (7, 67077), (10, 66990), (11, 66951), (12, 66909), (14, 66783), (15, 66762), (16, 66750), (17, 66678), (18, 66564), (19, 66525), (20, 66507),

Gene: YouGoGlencoco_97 Start: 67033, Stop: 66302, Start Num: 4
Candidate Starts for YouGoGlencoco_97:

(Start: 4 @67033 has 272 MA's), (6, 66994), (7, 66967), (10, 66880), (11, 66841), (12, 66799), (14, 66673), (15, 66652), (16, 66640), (17, 66568), (18, 66454), (19, 66415), (20, 66397),

Gene: Zaider_98 Start: 67408, Stop: 66677, Start Num: 4

Candidate Starts for Zaider_98:

(Start: 4 @67408 has 272 MA's), (6, 67369), (7, 67342), (10, 67255), (11, 67216), (12, 67174), (14, 67048), (15, 67027), (16, 67015), (17, 66943), (18, 66829), (19, 66790), (20, 66772),

Gene: Zelda_97 Start: 67364, Stop: 66633, Start Num: 4

Candidate Starts for Zelda_97:

(Start: 4 @67364 has 272 MA's), (6, 67325), (7, 67298), (10, 67211), (11, 67172), (12, 67130), (14, 67004), (15, 66983), (16, 66971), (17, 66899), (18, 66785), (19, 66746), (20, 66728),

Gene: Zonia_97 Start: 67474, Stop: 66743, Start Num: 4

Candidate Starts for Zonia_97:

(Start: 4 @67474 has 272 MA's), (6, 67435), (7, 67408), (11, 67282), (12, 67240), (14, 67114), (15, 67093), (16, 67081), (17, 67009), (18, 66895), (19, 66856), (20, 66838),