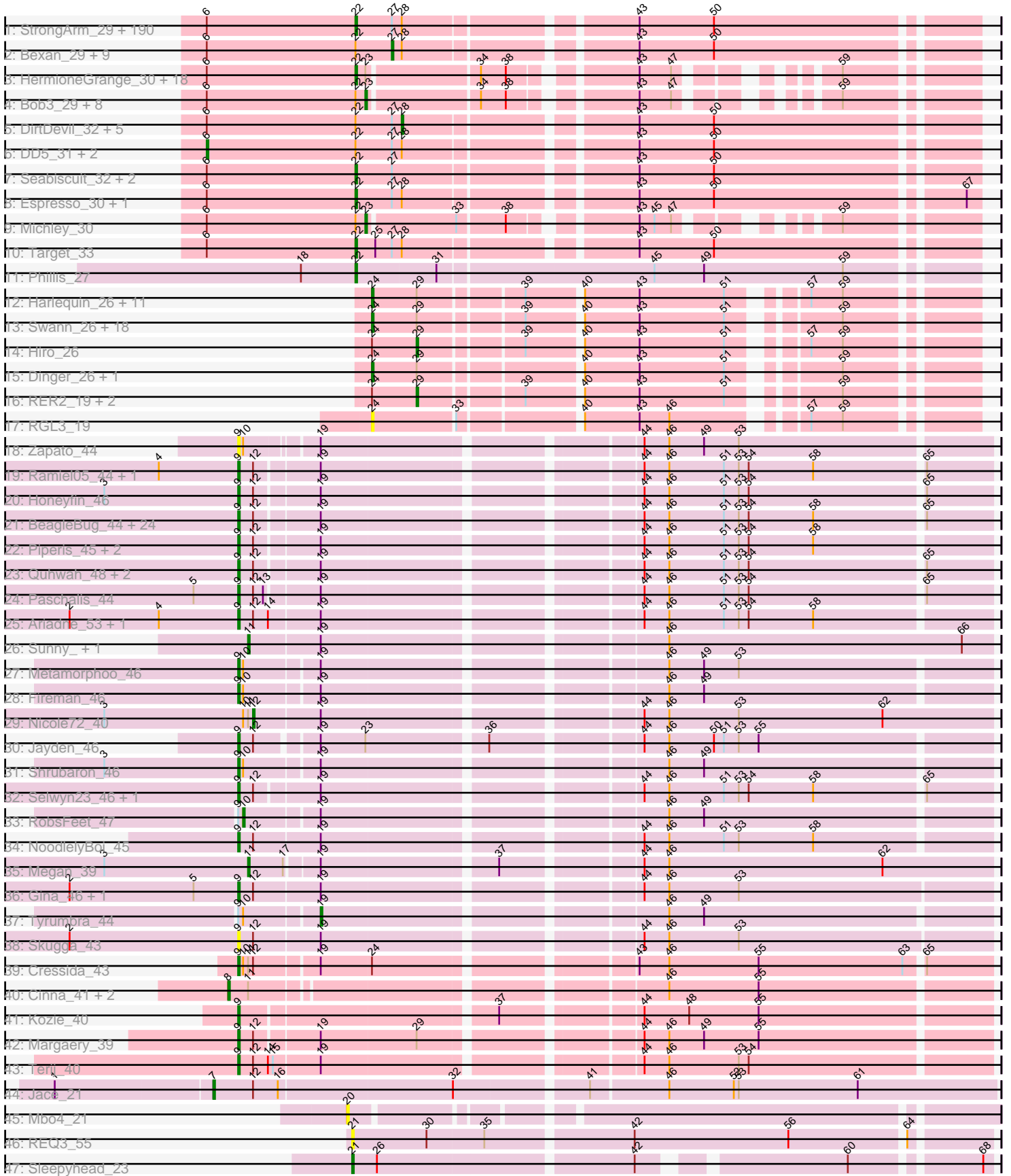


Pham 292434



Note: Tracks are now grouped by subcluster and scaled. Switching in subcluster is indicated by changes in track color. Track scale is now set by default to display the region 30 bp upstream of start 1 to 30 bp downstream of the last possible start. If this default region is judged to be packed too tightly with annotated starts, the track will be further scaled to only show that region of the ORF with annotated starts. This action will be indicated by adding "Zoomed" to the title. For starts, yellow indicates the location of called starts comprised solely of Glimmer/GeneMark auto-annotations, green indicates the location of called starts with at least 1 manual gene annotation.

Pham 292434 Report

This analysis was run 04/18/26 on database version 643.

Pham number 292434 has 349 members, 37 are drafts.

Phages represented in each track:

- Track 1 : StrongArm_29, Aeneas_32, Rajelicia_30, Zeuska_31, PhrostyMug_30, Ringer_30, Museum_32, LilBib_31, Moose_30, GageAP_32, Kugel_31, BluSpix_31, PhineBark_29, Tasp14_31, Euphoria_30, Alsfro_34, PascalRango_31, Petruccio_31, Scowl_31, Pippin_32, Arcanine_31, Magnito_29, TheloniousMonk_32, HanShotFirst_30, Gyzlar_32, Oogway_29, Turj99_29, Rufus_31, Dulcie_29, Doom_31, Lockley_30, Ciao_30, Abrogate_310, Dreamboat_31, JackSparrow_31, Pari_31, HarryOW_31, JC27_32, Ichabod_31, Ashballer_32, McGuire_31, Pinto_33, Whitspit_31, MetalQZJ_30, MilleFeuille_27, BillKnuckles_31, Sagefire_31, Ajay_31, BarrowTuph_29, KyMonks1A_32, Violet_29, Mkhuseleli_31, Kanely_31, Fajezeel_32, GrecoEtereo_32, PinkPlastic_29, Raid_30, STLscum_31, Mryolo_29, Sunshine924_31, Zeeculate_30, Crispicous1_29, Ruotula_29, Big3_30, Eyeball_30, QTRLifeCrisis_30, Nhonho_30, Blessor_30, Chanagan_29, SwissCheese_32, Greg_32, GroundGoblin_32, Inyanga_29, Forsytheast_30, Bruns_29, Applejack_30, JuliaChild_32, ConceptII_32, DrFeelGood_29, Sumter_29, Lamina13_30, Teodoridan_28, Atkinbua_32, Dexes_31, Blackflame_30, EnzoK_31, Sibs6_32, Rubeus_31, Slagathor_31, Gwendoluna_32, TwoPeat_31, BPBiebs31_31, Anglerfish_31, Licorice_32, Maroc7_29, Homines_30, MrGordo_30, Rhynn_30, Trouble_31, Altman_32, AFIS_30, Tripl3t_31, Petp2012_32, Ohno789_30, Jorgensen_30, Wheeler_30, Papez_32, Manatee_31, Norz_32, KikiBouba_32, Marcell_30, Sorpresa_30, SpikeBT_32, Thor_30, Briton15_32, Pita2_32, Agaliana_31, Acme_32, Lopton_31, Nerujay_31, ProMouse_29, Molly_31, Jasper_31, CartmannCramer_30, Bircsak_30, Kenmech_33, Pepe_31, PowerRanger_32, MaryBeth_30, Gompeii16_30, ILeeKay_32, Marco3_30, BeesKnees_31, PattyP_32, Alvin_31, Topgun_30, Seanderson_31, Bigchungji_30, Payneful_30, Burton_31, Phlippers_29, Hope4ever_30, PSullivan_32, Paraselene_29, Bxb1_28, Tote_32, Abbysshoes_31, Dussy_31, Corvo_31, Lesedi_29, Marchy_29, Aldrich_32, BigPaolini_31, Naira_31, Solon_30, Magnar_30, Blue_30, Sandaddy_29, Switzer_31, Carlyle_32, Watermelon_32, Fushigi_31, Marge_31, Gandalf20_31, PherrisBueller_31, Gachnar_30, Parliament_29, BaconJack_33, Monet_32, Froghopper_31, A6_28, Iqorha_29, BK1_28, Barriga_30, Levia_30, Zephyr_30, Arlo_29, Puppet_30, Dynamix_31, Pelly_31, Killigrew_28, Hermia_33, NEHalo_30, SkiPole_32, Niza_32, GMonster_29, Sanya_29, McSinger_31, Swole_32, Mule_30, Beatrix_30
- Track 2 : Bexan_29, Bethlehem_30, KBG_31, Rutherferd_32, IgnatiusPatJac_30, StewieG_29, Buttons_32, Hami1_32, Kykar_30, ShortQueendom_29
- Track 3 : HermioneGrange_30, Snazzy_29, RidgeCB_30, Adahisdi_31, DreamCatcher_33, Bigfoot_29, CactusRose_29, BigMau_32, Jerm2_31, Fenn_31,

Smairt_31, Rohr_31, PacerPaul_30, Cueylyss_30, Francis47_30, Marsha_30, Graduation_32, Paphu_29, Wilkins_30

- Track 4 : Bob3_29, Bones_30, ChristmasHams_31, Traft412_32, Fascinus_29, LunarLander_31, MPlant7149_29, Edtherson_31, Treddle_32
- Track 5 : DirtDevil_32, Perseus_32, Noxious_32, U2_30, Squee_31, CatBus_32
- Track 6 : DD5_31, KSSJEB_30, SarFire_30
- Track 7 : Seabiscuit_32, Peterson_33, Smeagol_32
- Track 8 : Espresso_30, Makemake_30
- Track 9 : Michley_30
- Track 10 : Target_33
- Track 11 : Phillis_27
- Track 12 : Harlequin_26, Yogi_26, Bonanza_26, PhailMary_25, Rasputin_26, AppleCloud_24, Bryce_26, Yoncess_26, Alpacados_25, Jester_26, BobbyDazzler_26, Krishelle_26
- Track 13 : Swann_26, CosmicSans_26, TWAMP_26, Lillie_26, Alatin_26, Phrankenstien_26, Gollum_26, Takoda_26, Erik_26, StCroix_26, Nancinator_26, Bradshaw_26, Rhodalysa_26, Shuman_26, Espica_26, Natosaleda_26, Naiad_26, Belenaria_26, UhSalsa_26
- Track 14 : Hiro_26
- Track 15 : Dinger_26, Partridge_26
- Track 16 : RER2_19, AngryOrchard_25, RexFury_26
- Track 17 : RGL3_19
- Track 18 : Zapato_44
- Track 19 : Ramiel05_44, Kowalski_44
- Track 20 : Honeyfin_46
- Track 21 : BeagleBug_44, EarickHC_45, Shotgun_44, BrazzalePHS_44, Rockwell_44, PiperSansNom_45, SirFrank_44, Antares_45, Onika_44, Phrancesco_45, PhedwardCullen_43, Savannah_44, Scumberland_46, ClearAsMud_47, CrazyRich_44, Cranjis_46, KaiHaiDragon_45, Phorgeous_44, Pulchra_46, LittleFortune_46, Lucretia_45, Hermeonysus_44, PierreOrion_45, Ganandorf_44, Jollipop_45
- Track 22 : Piperis_45, Jefe_45, Yeti_45
- Track 23 : Quhwah_48, Busephilis_44, Crisis_46
- Track 24 : Paschalis_44
- Track 25 : Ariadne_53, Smarties_53
- Track 26 : Sunny_, Merry_
- Track 27 : Metamorphoo_46
- Track 28 : Fireman_46
- Track 29 : Nicole72_40
- Track 30 : Jayden_46
- Track 31 : Shrubaron_46
- Track 32 : Selwyn23_46, Glorp_46
- Track 33 : RobsFeet_47
- Track 34 : NoodlelyBoi_45
- Track 35 : Megan_39
- Track 36 : Gina_46, Teamocil_46
- Track 37 : Tyumbra_44
- Track 38 : Skugga_43
- Track 39 : Cressida_43
- Track 40 : Cinna_41, MementoMori_42, Matzah_42
- Track 41 : Kozie_40
- Track 42 : Margaery_39
- Track 43 : Terij_40

- Track 44 : Jace_21
- Track 45 : Mbo4_21
- Track 46 : REQ3_55
- Track 47 : Sleepyhead_23

Summary of Final Annotations (See graph section above for start numbers):

The start number called the most often in the published annotations is 22, it was called in 197 of the 312 non-draft genes in the pham.

Genes that call this "Most Annotated" start:

- A6_28, AFIS_30, Abbyshoes_31, Abrogate_310, Acme_32, Adahisdi_31, Aeneas_32, Agaliana_31, Ajay_31, Aldrich_32, Alsfro_34, Altman_32, Alvin_31, Anglerfish_31, Applejack_30, Arcanine_31, Arlo_29, Ashballer_32, Atkinbua_32, BK1_28, BPBiobs31_31, BaconJack_33, Barriga_30, BarrowTuph_29, Beatrix_30, BeesKnees_31, Big3_30, BigMau_32, BigPaolini_31, Bigchungu_30, Bigfoot_29, BillKnuckles_31, Bircsak_30, Blackflame_30, Blesser_30, BluSpix_31, Blue_30, Briton15_32, Bruns_29, Burton_31, Bxb1_28, CactusRose_29, Carlyle_32, CartmannCramer_30, Chanagan_29, Ciao_30, ConceptII_32, Corvo_31, Crispicous1_29, Cueyllyss_30, Dexes_31, Doom_31, DrFeelGood_29, DreamCatcher_33, Dreamboat_31, Dulcie_29, Dussy_31, Dynamix_31, EnzoK_31, Espresso_30, Euphoria_30, Eyeball_30, Fajezeel_32, Fenn_31, Forsytheast_30, Francis47_30, Froghopper_31, Fushigi_31, GMonster_29, Gachnar_30, GageAP_32, Gandalf20_31, Gompeii16_30, Graduation_32, GrecoEtereo_32, Greg_32, GroundGoblin_32, Gwendoluna_32, Gyzlar_32, HanShotFirst_30, HarryOW_31, Hermia_33, HermioneGrange_30, Homines_30, Hope4ever_30, ILeeKay_32, Ichabod_31, Inyanga_29, Iqorha_29, JC27_32, JackSparrow_31, Jasper_31, Jerm2_31, Jorgensen_30, JuliaChild_32, Kanely_31, Kenmech_33, KikiBouba_32, Killigrew_28, Kugel_31, KyMonks1A_32, Lamina13_30, Lesedi_29, Levia_30, Licorice_32, LilBib_31, Lockley_30, Lopton_31, Magnar_30, Magnito_29, Makemake_30, Manatee_31, Marcell_30, Marchy_29, Marco3_30, Marge_31, Maroc7_29, Marsha_30, MaryBeth_30, McGuire_31, McSinger_31, MetalQZJ_30, MilleFeuille_27, Mkhuseleli_31, Molly_31, Monet_32, Moose_30, MrGordo_30, Mryolo_29, Mule_30, Museum_32, NEHalo_30, Naira_31, Nerujay_31, Nhonho_30, Niza_32, Norz_32, Ohno789_30, Oogway_29, PSullivan_32, PacerPaul_30, Papez_32, Paphu_29, Paraselene_29, Pari_31, Parliament_29, PascalRango_31, PattyP_32, Payneful_30, Pelly_31, Pepe_31, Peterson_33, Petp2012_32, Petruccio_31, PherrisBueller_31, Phillis_27, PhineBark_29, Phlippers_29, PhrostyMug_30, PinkPlastic_29, Pinto_33, Pippin_32, Pita2_32, PowerRanger_32, ProMouse_29, Puppet_30, QTRlifeCrisis_30, Raid_30, Rajelicia_30, Rhynn_30, RidgeCB_30, Ringer_30, Rohr_31, Rubeus_31, Rufus_31, Ruotula_29, STLscum_31, Sagefire_31, Sandaddy_29, Sanya_29, Scowl_31, Seabiscuit_32, Seanderson_31, Sibs6_32, SkiPole_32, Slagathor_31, Smairt_31, Smeagol_32, Snazzy_29, Solon_30, Sorpresa_30, SpikeBT_32, StrongArm_29, Sumter_29, Sunshine924_31, SwissCheese_32, Switzer_31, Swole_32, Target_33, Tasp14_31, Teodoridan_28, TheloniousMonk_32, Thor_30, Topgun_30, Tote_32, Tripl3t_31, Trouble_31, Turj99_29, TwoPeat_31, Violet_29, Watermelon_32, Wheeler_30, Whitspit_31, Wilkins_30, Zeeculate_30, Zephyr_30, Zeuska_31,

Genes that have the "Most Annotated" start but do not call it:

- Bethlehem_30, Bexan_29, Bob3_29, Bones_30, Buttons_32, CatBus_32, ChristmasHams_31, DD5_31, DirtDevil_32, Edtherson_31, Fascinus_29, Hami1_32, IgnatiusPatJac_30, KBG_31, KSSJEB_30, Kykar_30, LunarLander_31, MPlant7149_29, Michley_30, Noxious_32, Perseus_32, Rutherferd_32, SarFire_30, ShortQueendom_29, Squee_31, StewieG_29, Traft412_32, Treddle_32, U2_30,

Genes that do not have the "Most Annotated" start:

- Alatin_26, Alpacados_25, AngryOrchard_25, Antares_45, AppleCloud_24, Ariadne_53, BeagleBug_44, Belenaria_26, BobbyDazzler_26, Bonanza_26, Bradshaw_26, BrazzalePHS_44, Bryce_26, Busephilis_44, Cinna_41, ClearAsMud_47, CosmicSans_26, Cranjis_46, CrazyRich_44, Cressida_43, Crisis_46, Dinger_26, EarickHC_45, Erik_26, Espica_26, Fireman_46, Ganandorf_44, Gina_46, Glorp_46, Gollum_26, Harlequin_26, Hermeonysus_44, Hiro_26, Honeyfin_46, Jace_21, Jayden_46, Jefe_45, Jester_26, Jollipop_45, KaiHaiDragon_45, Kowalski_44, Kozi_40, Krishelle_26, Lillie_26, LittleFortune_46, Lucretia_45, Margaery_39, Matzah_42, Mbo4_21, Megan_39, MementoMori_42, Merry_, Metamorphoo_46, Naiad_26, Nancinator_26, Natosaleda_26, Nicole72_40, NoodlelyBoi_45, Onika_44, Partridge_26, Paschalis_44, PhailMary_25, PhedwardCullen_43, Phorgeous_44, Phrancesco_45, Phrankenstein_26, PierreOrion_45, PiperSansNom_45, Piperis_45, Pulchra_46, Quhwah_48, REQ3_55, RER2_19, RGL3_19, Ramiel05_44, Rasputin_26, RexFury_26, Rhodalysa_26, RobsFeet_47, Rockwell_44, Savannah_44, Scumberland_46, Selwyn23_46, Shotgun_44, Shrubaron_46, Shuman_26, SirFrank_44, Skugga_43, Sleepyhead_23, Smarties_53, StCroix_26, Sunny_, Swann_26, TWAMP_26, Takoda_26, Teamocil_46, Terij_40, Tyumbra_44, UhSalsa_26, Yeti_45, Yogi_26, Yoncess_26, Zapato_44,

Summary by start number:

Start 6:

- Found in 245 of 349 (70.2%) of genes in pham
- Manual Annotations of this start: 3 of 312
- Called 1.2% of time when present
- Phage (with cluster) where this start called: DD5_31 (A1), KSSJEB_30 (A1), SarFire_30 (A1),

Start 7:

- Found in 1 of 349 (0.3%) of genes in pham
- Manual Annotations of this start: 1 of 312
- Called 100.0% of time when present
- Phage (with cluster) where this start called: Jace_21 (singleton),

Start 8:

- Found in 3 of 349 (0.9%) of genes in pham
- Manual Annotations of this start: 3 of 312
- Called 100.0% of time when present
- Phage (with cluster) where this start called: Cinna_41 (EI), Matzah_42 (EI), MementoMori_42 (EI),

Start 9:

- Found in 54 of 349 (15.5%) of genes in pham
- Manual Annotations of this start: 45 of 312
- Called 96.3% of time when present

- Phage (with cluster) where this start called: Antares_45 (EC), Ariadne_53 (EC), BeagleBug_44 (EC), BrazzalePHS_44 (EC), Busephilis_44 (EC), ClearAsMud_47 (EC), Cranjis_46 (EC), CrazyRich_44 (EC), Cressida_43 (EI), Crisis_46 (EC), EarickHC_45 (EC), Fireman_46 (EC), Ganandorf_44 (EC), Gina_46 (EC), Glorp_46 (EC), Hermeonysus_44 (EC), Honeyfin_46 (EC), Jayden_46 (EC), Jefe_45 (EC), Jollipop_45 (EC), KaiHaiDragon_45 (EC), Kowalski_44 (EC), Kozi_40 (EI), LittleFortune_46 (EC), Lucretia_45 (EC), Margaery_39 (EI), Metamorphoo_46 (EC), NoodlelyBoi_45 (EC), Onika_44 (EC), Paschalis_44 (EC), PhedwardCullen_43 (EC), Phorgeous_44 (EC), Phrancesco_45 (EC), PierreOrion_45 (EC), PiperSansNom_45 (EC), Piperis_45 (EC), Pulchra_46 (EC), Quhwah_48 (EC), Ramiel05_44 (EC), Rockwell_44 (EC), Savannah_44 (EC), Scumberland_46 (EC), Selwyn23_46 (EC), Shotgun_44 (EC), Shrubaron_46 (EC), SirFrank_44 (EC), Skugga_43 (EC), Smarties_53 (EC), Teamocil_46 (EC), Terij_40 (EI), Yeti_45 (EC), Zapato_44 (EC),

Start 10:

- Found in 8 of 349 (2.3%) of genes in pham
- Manual Annotations of this start: 1 of 312
- Called 12.5% of time when present
- Phage (with cluster) where this start called: RobsFeet_47 (EC),

Start 11:

- Found in 8 of 349 (2.3%) of genes in pham
- Manual Annotations of this start: 3 of 312
- Called 37.5% of time when present
- Phage (with cluster) where this start called: Megan_39 (EC), Merry_ (EC), Sunny_ (EC),

Start 12:

- Found in 49 of 349 (14.0%) of genes in pham
- Manual Annotations of this start: 1 of 312
- Called 2.0% of time when present
- Phage (with cluster) where this start called: Nicole72_40 (EC),

Start 19:

- Found in 57 of 349 (16.3%) of genes in pham
- Manual Annotations of this start: 1 of 312
- Called 1.8% of time when present
- Phage (with cluster) where this start called: Tyumbra_44 (EC),

Start 20:

- Found in 1 of 349 (0.3%) of genes in pham
- No Manual Annotations of this start.
- Called 100.0% of time when present
- Phage (with cluster) where this start called: Mbo4_21 (singleton),

Start 21:

- Found in 2 of 349 (0.6%) of genes in pham
- Manual Annotations of this start: 1 of 312
- Called 100.0% of time when present
- Phage (with cluster) where this start called: REQ3_55 (singleton), Sleepyhead_23 (singleton),

Start 22:

- Found in 246 of 349 (70.5%) of genes in pham
- Manual Annotations of this start: 197 of 312
- Called 88.2% of time when present
- Phage (with cluster) where this start called: A6_28 (A1), AFIS_30 (A1), Abbyshoes_31 (A1), Abrogate_310 (A1), Acme_32 (A1), Adahisdi_31 (A1), Aeneas_32 (A1), Agaliana_31 (A1), Ajay_31 (A1), Aldrich_32 (A1), Alsfro_34 (A1), Altman_32 (A1), Alvin_31 (A1), Anglerfish_31 (A1), Applejack_30 (A1), Arcanine_31 (A1), Arlo_29 (A1), Ashballer_32 (A1), Atkinbua_32 (A1), BK1_28 (A1), BPBiebs31_31 (A1), BaconJack_33 (A1), Barriga_30 (A1), BarrowTuph_29 (A1), Beatrix_30 (A1), BeesKnees_31 (A1), Big3_30 (A1), BigMau_32 (A1), BigPaolini_31 (A1), Bigchungu_30 (A1), Bigfoot_29 (A1), BillKnuckles_31 (A1), Bircsak_30 (A1), Blackflame_30 (A1), Blesser_30 (A1), BluSpix_31 (A1), Blue_30 (A1), Briton15_32 (A1), Bruns_29 (A1), Burton_31 (A1), Bxb1_28 (A1), CactusRose_29 (A1), Carlyle_32 (A1), CartmannCramer_30 (A1), Chanagan_29 (A1), Ciao_30 (A1), ConceptII_32 (A1), Corvo_31 (A1), Crispicous1_29 (A1), Cueyllyss_30 (A1), Dexes_31 (A1), Doom_31 (A1), DrFeelGood_29 (A1), DreamCatcher_33 (A1), Dreamboat_31 (A1), Dulcie_29 (A1), Dussy_31 (A1), Dynamix_31 (A1), EnzoK_31 (A1), Espresso_30 (A1), Euphoria_30 (A1), Eyeball_30 (A1), Fajezeel_32 (A1), Fenn_31 (A1), Forsytheast_30 (A1), Francis47_30 (A1), Froghopper_31 (A1), Fushigi_31 (A1), GMonster_29 (A1), Gachnar_30 (A1), GageAP_32 (A1), Gandalf20_31 (A1), Gompeii16_30 (A1), Graduation_32 (A1), GrecoEtereo_32 (A1), Greg_32 (A1), GroundGoblin_32 (A1), Gwendoluna_32 (A1), Gyzlar_32 (A1), HanShotFirst_30 (A1), HarryOW_31 (A1), Hermia_33 (A1), HermioneGrange_30 (A1), Homines_30 (A1), Hope4ever_30 (A1), ILeeKay_32 (A1), Ichabod_31 (A1), Inyanga_29 (A1), Iqorha_29 (A1), JC27_32 (A1), JackSparrow_31 (A1), Jasper_31 (A1), Jerm2_31 (A1), Jorgensen_30 (A1), JuliaChild_32 (A1), Kanely_31 (A1), Kenmech_33 (A1), KikiBouba_32 (A1), Killigrew_28 (A1), Kugel_31 (A1), KyMonks1A_32 (A1), Lamina13_30 (A1), Lesedi_29 (A1), Levia_30 (A1), Licorice_32 (A1), LilBib_31 (A1), Lockley_30 (A1), Lopton_31 (A1), Magnar_30 (A1), Magnito_29 (A1), Makemake_30 (A1), Manatee_31 (A1), Marcell_30 (A1), Marchy_29 (A1), Marco3_30 (A1), Marge_31 (A1), Maroc7_29 (A1), Marsha_30 (A1), MaryBeth_30 (A1), McGuire_31 (A1), McSinger_31 (A1), MetalQZJ_30 (A1), MilleFeuille_27 (A1), Mkhuseleli_31 (A1), Molly_31 (A1), Monet_32 (A1), Moose_30 (A1), MrGordo_30 (A1), Mryolo_29 (A1), Mule_30 (A1), Museum_32 (A1), NEHalo_30 (A1), Naira_31 (A1), Nerujay_31 (A1), Nhonho_30 (A1), Niza_32 (A1), Norz_32 (A1), Ohno789_30 (A1), Oogway_29 (A1), PSullivan_32 (A1), PacerPaul_30 (A1), Papez_32 (A1), Paphu_29 (A1), Paraselene_29 (A1), Pari_31 (A1), Parliament_29 (A1), PascalRango_31 (A1), PattyP_32 (A1), Payneful_30 (A1), Pelly_31 (A1), Pepe_31 (A1), Peterson_33 (A1), Petp2012_32 (A1), Petruchio_31 (A1), PherrisBueller_31 (A1), Phillis_27 (A8), PhineBark_29 (A1), Phlippers_29 (A1), PhrostyMug_30 (A1), PinkPlastic_29 (A1), Pinto_33 (A1), Pippin_32 (A1), Pita2_32 (A1), PowerRanger_32 (A1), ProMouse_29 (A1), Puppet_30 (A1), QTRLifeCrisis_30 (A1), Raid_30 (A1), Rajelicia_30 (A1), Rhynn_30 (A1), RidgeCB_30 (A1), Ringer_30 (A1), Rohr_31 (A1), Rubeus_31 (A1), Rufus_31 (A1), Ruotula_29 (A1), STLscum_31 (A1), Sagefire_31 (A1), Sandaddy_29 (A1), Sanya_29 (A1), Scowl_31 (A1), Seabiscuit_32 (A1), Seanderson_31 (A1), Sibs6_32 (A1), SkiPole_32 (A1), Slagathor_31 (A1), Smairt_31 (A1), Smeagol_32 (A1), Snazzy_29 (A1), Solon_30 (A1), Sorpresa_30 (A1), SpikeBT_32 (A1), StrongArm_29 (A1), Sumter_29 (A1), Sunshine924_31 (A1), SwissCheese_32 (A1), Switzer_31 (A1), Swole_32 (A1), Target_33 (A1), Tasp14_31 (A1), Teodoridan_28 (A1), TheloniousMonk_32 (A1), Thor_30 (A1), Topgun_30 (A1), Tote_32 (A1), Tripl3t_31 (A1), Trouble_31 (A1), Turj99_29 (A1), TwoPeat_31 (A1), Violet_29 (A1), Watermelon_32 (A1), Wheeler_30 (A1), Whitspit_31 (A1), Wilkins_30 (A1), Zeeculate_30 (A1), Zephyr_30 (A1), Zeuska_31 (A1),

Start 23:

- Found in 30 of 349 (8.6%) of genes in pham
- Manual Annotations of this start: 9 of 312
- Called 33.3% of time when present
- Phage (with cluster) where this start called: Bob3_29 (A1), Bones_30 (A1), ChristmasHams_31 (A1), Edtherson_31 (A1), Fascinus_29 (A1), LunarLander_31 (A1), MPlant7149_29 (A1), Michley_30 (A1), Traft412_32 (A1), Treddle_32 (A1),

Start 24:

- Found in 39 of 349 (11.2%) of genes in pham
- Manual Annotations of this start: 33 of 312
- Called 87.2% of time when present
- Phage (with cluster) where this start called: Alatin_26 (CA), Alpacados_25 (CA), AppleCloud_24 (CA), Belenaria_26 (CA), BobbyDazzler_26 (CA), Bonanza_26 (CA), Bradshaw_26 (CA), Bryce_26 (CA), CosmicSans_26 (CA), Dinger_26 (CA), Erik_26 (CA), Espica_26 (CA), Gollum_26 (CA), Harlequin_26 (CA), Jester_26 (CA), Krishelle_26 (CA), Lillie_26 (CA), Naiad_26 (CA), Nancinator_26 (CA), Natosaleda_26 (CA), Partridge_26 (CA), PhailMary_25 (CA), Phrankenstein_26 (CA), RGL3_19 (CA), Rasputin_26 (CA), Rhodalysa_26 (CA), Shuman_26 (CA), StCroix_26 (CA), Swann_26 (CA), TWAMP_26 (CA), Takoda_26 (CA), UhSalsa_26 (CA), Yogi_26 (CA), Yoncess_26 (CA),

Start 27:

- Found in 216 of 349 (61.9%) of genes in pham
- Manual Annotations of this start: 8 of 312
- Called 4.6% of time when present
- Phage (with cluster) where this start called: Bethlehem_30 (A1), Bexan_29 (A1), Buttons_32 (A1), Hami1_32 (A1), IgnatiusPatJac_30 (A1), KBG_31 (A1), Kykar_30 (A1), Rutherford_32 (A1), ShortQueendom_29 (A1), StewieG_29 (A1),

Start 28:

- Found in 213 of 349 (61.0%) of genes in pham
- Manual Annotations of this start: 3 of 312
- Called 2.8% of time when present
- Phage (with cluster) where this start called: CatBus_32 (A1), DirtDevil_32 (A1), Noxious_32 (A1), Perseus_32 (A1), Squee_31 (A1), U2_30 (A1),

Start 29:

- Found in 38 of 349 (10.9%) of genes in pham
- Manual Annotations of this start: 3 of 312
- Called 10.5% of time when present
- Phage (with cluster) where this start called: AngryOrchard_25 (CA), Hiro_26 (CA), RER2_19 (CA), RexFury_26 (CA),

Summary by clusters:

There are 6 clusters represented in this pham: singleton, EI, CA, EC, A1, A8,

Info for manual annotations of cluster A1:

- Start number 6 was manually annotated 3 times for cluster A1.
- Start number 22 was manually annotated 196 times for cluster A1.
- Start number 23 was manually annotated 9 times for cluster A1.

- Start number 27 was manually annotated 8 times for cluster A1.
- Start number 28 was manually annotated 3 times for cluster A1.

Info for manual annotations of cluster A8:

- Start number 22 was manually annotated 1 time for cluster A8.

Info for manual annotations of cluster CA:

- Start number 24 was manually annotated 33 times for cluster CA.
- Start number 29 was manually annotated 3 times for cluster CA.

Info for manual annotations of cluster EC:

- Start number 9 was manually annotated 41 times for cluster EC.
- Start number 10 was manually annotated 1 time for cluster EC.
- Start number 11 was manually annotated 3 times for cluster EC.
- Start number 12 was manually annotated 1 time for cluster EC.
- Start number 19 was manually annotated 1 time for cluster EC.

Info for manual annotations of cluster EI:

- Start number 8 was manually annotated 3 times for cluster EI.
- Start number 9 was manually annotated 4 times for cluster EI.

Gene Information:

Gene: A6_28 Start: 23288, Stop: 23635, Start Num: 22

Candidate Starts for A6_28:

(Start: 6 @23198 has 3 MA's), (Start: 22 @23288 has 197 MA's), (Start: 27 @23309 has 8 MA's),
(Start: 28 @23315 has 3 MA's), (43, 23441), (50, 23486),

Gene: AFIS_30 Start: 23831, Stop: 24178, Start Num: 22

Candidate Starts for AFIS_30:

(Start: 6 @23741 has 3 MA's), (Start: 22 @23831 has 197 MA's), (Start: 27 @23852 has 8 MA's),
(Start: 28 @23858 has 3 MA's), (43, 23984), (50, 24029),

Gene: Abbyshoes_31 Start: 23946, Stop: 24293, Start Num: 22

Candidate Starts for Abbyshoes_31:

(Start: 6 @23856 has 3 MA's), (Start: 22 @23946 has 197 MA's), (Start: 27 @23967 has 8 MA's),
(Start: 28 @23973 has 3 MA's), (43, 24099), (50, 24144),

Gene: Abrogate_310 Start: 24506, Stop: 24853, Start Num: 22

Candidate Starts for Abrogate_310:

(Start: 6 @24416 has 3 MA's), (Start: 22 @24506 has 197 MA's), (Start: 27 @24527 has 8 MA's),
(Start: 28 @24533 has 3 MA's), (43, 24659), (50, 24704),

Gene: Acme_32 Start: 24047, Stop: 24394, Start Num: 22

Candidate Starts for Acme_32:

(Start: 6 @23957 has 3 MA's), (Start: 22 @24047 has 197 MA's), (Start: 27 @24068 has 8 MA's),
(Start: 28 @24074 has 3 MA's), (43, 24200), (50, 24245),

Gene: Adahisdi_31 Start: 23954, Stop: 24253, Start Num: 22

Candidate Starts for Adahisdi_31:

(Start: 6 @23864 has 3 MA's), (Start: 22 @23954 has 197 MA's), (Start: 23 @23960 has 9 MA's), (34, 24023), (38, 24038), (43, 24101), (47, 24119), (59, 24182),

Gene: Aeneas_32 Start: 24083, Stop: 24430, Start Num: 22

Candidate Starts for Aeneas_32:

(Start: 6 @23993 has 3 MA's), (Start: 22 @24083 has 197 MA's), (Start: 27 @24104 has 8 MA's), (Start: 28 @24110 has 3 MA's), (43, 24236), (50, 24281),

Gene: Agaliana_31 Start: 24027, Stop: 24374, Start Num: 22

Candidate Starts for Agaliana_31:

(Start: 6 @23937 has 3 MA's), (Start: 22 @24027 has 197 MA's), (Start: 27 @24048 has 8 MA's), (Start: 28 @24054 has 3 MA's), (43, 24180), (50, 24225),

Gene: Ajay_31 Start: 24259, Stop: 24606, Start Num: 22

Candidate Starts for Ajay_31:

(Start: 6 @24169 has 3 MA's), (Start: 22 @24259 has 197 MA's), (Start: 27 @24280 has 8 MA's), (Start: 28 @24286 has 3 MA's), (43, 24412), (50, 24457),

Gene: Alatin_26 Start: 18760, Stop: 19080, Start Num: 24

Candidate Starts for Alatin_26:

(Start: 24 @18760 has 33 MA's), (Start: 29 @18787 has 3 MA's), (39, 18844), (40, 18874), (43, 18907), (51, 18958), (59, 19009),

Gene: Aldrich_32 Start: 25050, Stop: 25397, Start Num: 22

Candidate Starts for Aldrich_32:

(Start: 6 @24960 has 3 MA's), (Start: 22 @25050 has 197 MA's), (Start: 27 @25071 has 8 MA's), (Start: 28 @25077 has 3 MA's), (43, 25203), (50, 25248),

Gene: Alpacados_25 Start: 18696, Stop: 19016, Start Num: 24

Candidate Starts for Alpacados_25:

(Start: 24 @18696 has 33 MA's), (Start: 29 @18723 has 3 MA's), (39, 18780), (40, 18810), (43, 18843), (51, 18894), (57, 18927), (59, 18945),

Gene: Alsfro_34 Start: 24492, Stop: 24839, Start Num: 22

Candidate Starts for Alsfro_34:

(Start: 6 @24402 has 3 MA's), (Start: 22 @24492 has 197 MA's), (Start: 27 @24513 has 8 MA's), (Start: 28 @24519 has 3 MA's), (43, 24645), (50, 24690),

Gene: Altman_32 Start: 24550, Stop: 24897, Start Num: 22

Candidate Starts for Altman_32:

(Start: 6 @24460 has 3 MA's), (Start: 22 @24550 has 197 MA's), (Start: 27 @24571 has 8 MA's), (Start: 28 @24577 has 3 MA's), (43, 24703), (50, 24748),

Gene: Alvin_31 Start: 24319, Stop: 24666, Start Num: 22

Candidate Starts for Alvin_31:

(Start: 6 @24229 has 3 MA's), (Start: 22 @24319 has 197 MA's), (Start: 27 @24340 has 8 MA's), (Start: 28 @24346 has 3 MA's), (43, 24472), (50, 24517),

Gene: Anglerfish_31 Start: 24463, Stop: 24810, Start Num: 22

Candidate Starts for Anglerfish_31:

(Start: 6 @24373 has 3 MA's), (Start: 22 @24463 has 197 MA's), (Start: 27 @24484 has 8 MA's), (Start: 28 @24490 has 3 MA's), (43, 24616), (50, 24661),

Gene: AngryOrchard_25 Start: 18706, Stop: 18999, Start Num: 29
Candidate Starts for AngryOrchard_25:
(Start: 24 @18679 has 33 MA's), (Start: 29 @18706 has 3 MA's), (39, 18763), (40, 18793), (43, 18826),
(51, 18877), (59, 18928),

Gene: Antares_45 Start: 31580, Stop: 32002, Start Num: 9
Candidate Starts for Antares_45:
(Start: 9 @31580 has 45 MA's), (Start: 12 @31589 has 1 MA's), (Start: 19 @31625 has 1 MA's), (44,
31799), (46, 31814), (51, 31847), (53, 31856), (54, 31862), (58, 31901), (65, 31964),

Gene: AppleCloud_24 Start: 18725, Stop: 19045, Start Num: 24
Candidate Starts for AppleCloud_24:
(Start: 24 @18725 has 33 MA's), (Start: 29 @18752 has 3 MA's), (39, 18809), (40, 18839), (43, 18872),
(51, 18923), (57, 18956), (59, 18974),

Gene: Applejack_30 Start: 23724, Stop: 24071, Start Num: 22
Candidate Starts for Applejack_30:
(Start: 6 @23634 has 3 MA's), (Start: 22 @23724 has 197 MA's), (Start: 27 @23745 has 8 MA's),
(Start: 28 @23751 has 3 MA's), (43, 23877), (50, 23922),

Gene: Arcanine_31 Start: 23477, Stop: 23824, Start Num: 22
Candidate Starts for Arcanine_31:
(Start: 6 @23387 has 3 MA's), (Start: 22 @23477 has 197 MA's), (Start: 27 @23498 has 8 MA's),
(Start: 28 @23504 has 3 MA's), (43, 23630), (50, 23675),

Gene: Ariadne_53 Start: 33197, Stop: 33622, Start Num: 9
Candidate Starts for Ariadne_53:
(2, 33095), (4, 33149), (Start: 9 @33197 has 45 MA's), (Start: 12 @33206 has 1 MA's), (14, 33215),
(Start: 19 @33245 has 1 MA's), (44, 33419), (46, 33434), (51, 33467), (53, 33476), (54, 33482), (58,
33521),

Gene: Arlo_29 Start: 23353, Stop: 23700, Start Num: 22
Candidate Starts for Arlo_29:
(Start: 6 @23263 has 3 MA's), (Start: 22 @23353 has 197 MA's), (Start: 27 @23374 has 8 MA's),
(Start: 28 @23380 has 3 MA's), (43, 23506), (50, 23551),

Gene: Ashballer_32 Start: 24477, Stop: 24824, Start Num: 22
Candidate Starts for Ashballer_32:
(Start: 6 @24387 has 3 MA's), (Start: 22 @24477 has 197 MA's), (Start: 27 @24498 has 8 MA's),
(Start: 28 @24504 has 3 MA's), (43, 24630), (50, 24675),

Gene: Atkinbua_32 Start: 24177, Stop: 24524, Start Num: 22
Candidate Starts for Atkinbua_32:
(Start: 6 @24087 has 3 MA's), (Start: 22 @24177 has 197 MA's), (Start: 27 @24198 has 8 MA's),
(Start: 28 @24204 has 3 MA's), (43, 24330), (50, 24375),

Gene: BK1_28 Start: 23288, Stop: 23635, Start Num: 22
Candidate Starts for BK1_28:
(Start: 6 @23198 has 3 MA's), (Start: 22 @23288 has 197 MA's), (Start: 27 @23309 has 8 MA's),
(Start: 28 @23315 has 3 MA's), (43, 23441), (50, 23486),

Gene: BPBiabs31_31 Start: 24048, Stop: 24395, Start Num: 22
Candidate Starts for BPBiabs31_31:

(Start: 6 @23958 has 3 MA's), (Start: 22 @24048 has 197 MA's), (Start: 27 @24069 has 8 MA's),
(Start: 28 @24075 has 3 MA's), (43, 24201), (50, 24246),

Gene: BaconJack_33 Start: 24246, Stop: 24593, Start Num: 22

Candidate Starts for BaconJack_33:

(Start: 6 @24156 has 3 MA's), (Start: 22 @24246 has 197 MA's), (Start: 27 @24267 has 8 MA's),
(Start: 28 @24273 has 3 MA's), (43, 24399), (50, 24444),

Gene: Barriga_30 Start: 23579, Stop: 23926, Start Num: 22

Candidate Starts for Barriga_30:

(Start: 6 @23489 has 3 MA's), (Start: 22 @23579 has 197 MA's), (Start: 27 @23600 has 8 MA's),
(Start: 28 @23606 has 3 MA's), (43, 23732), (50, 23777),

Gene: BarrowTuph_29 Start: 23600, Stop: 23947, Start Num: 22

Candidate Starts for BarrowTuph_29:

(Start: 6 @23510 has 3 MA's), (Start: 22 @23600 has 197 MA's), (Start: 27 @23621 has 8 MA's),
(Start: 28 @23627 has 3 MA's), (43, 23753), (50, 23798),

Gene: BeagleBug_44 Start: 31361, Stop: 31783, Start Num: 9

Candidate Starts for BeagleBug_44:

(Start: 9 @31361 has 45 MA's), (Start: 12 @31370 has 1 MA's), (Start: 19 @31406 has 1 MA's), (44,
31580), (46, 31595), (51, 31628), (53, 31637), (54, 31643), (58, 31682), (65, 31745),

Gene: Beatrix_30 Start: 25161, Stop: 25508, Start Num: 22

Candidate Starts for Beatrix_30:

(Start: 6 @25071 has 3 MA's), (Start: 22 @25161 has 197 MA's), (Start: 27 @25182 has 8 MA's),
(Start: 28 @25188 has 3 MA's), (43, 25314), (50, 25359),

Gene: BeesKnees_31 Start: 23778, Stop: 24125, Start Num: 22

Candidate Starts for BeesKnees_31:

(Start: 6 @23688 has 3 MA's), (Start: 22 @23778 has 197 MA's), (Start: 27 @23799 has 8 MA's),
(Start: 28 @23805 has 3 MA's), (43, 23931), (50, 23976),

Gene: Belenaria_26 Start: 18760, Stop: 19080, Start Num: 24

Candidate Starts for Belenaria_26:

(Start: 24 @18760 has 33 MA's), (Start: 29 @18787 has 3 MA's), (39, 18844), (40, 18874), (43, 18907),
(51, 18958), (59, 19009),

Gene: Bethlehem_30 Start: 25025, Stop: 25351, Start Num: 27

Candidate Starts for Bethlehem_30:

(Start: 6 @24914 has 3 MA's), (Start: 22 @25004 has 197 MA's), (Start: 27 @25025 has 8 MA's),
(Start: 28 @25031 has 3 MA's), (43, 25157), (50, 25202),

Gene: Bexan_29 Start: 24749, Stop: 25075, Start Num: 27

Candidate Starts for Bexan_29:

(Start: 6 @24638 has 3 MA's), (Start: 22 @24728 has 197 MA's), (Start: 27 @24749 has 8 MA's),
(Start: 28 @24755 has 3 MA's), (43, 24881), (50, 24926),

Gene: Big3_30 Start: 24359, Stop: 24706, Start Num: 22

Candidate Starts for Big3_30:

(Start: 6 @24269 has 3 MA's), (Start: 22 @24359 has 197 MA's), (Start: 27 @24380 has 8 MA's),
(Start: 28 @24386 has 3 MA's), (43, 24512), (50, 24557),

Gene: BigMau_32 Start: 23960, Stop: 24259, Start Num: 22

Candidate Starts for BigMau_32:

(Start: 6 @23870 has 3 MA's), (Start: 22 @23960 has 197 MA's), (Start: 23 @23966 has 9 MA's), (34, 24029), (38, 24044), (43, 24107), (47, 24125), (59, 24188),

Gene: BigPaolini_31 Start: 24357, Stop: 24704, Start Num: 22

Candidate Starts for BigPaolini_31:

(Start: 6 @24267 has 3 MA's), (Start: 22 @24357 has 197 MA's), (Start: 27 @24378 has 8 MA's), (Start: 28 @24384 has 3 MA's), (43, 24510), (50, 24555),

Gene: Bigchungj_30 Start: 23730, Stop: 24077, Start Num: 22

Candidate Starts for Bigchungj_30:

(Start: 6 @23640 has 3 MA's), (Start: 22 @23730 has 197 MA's), (Start: 27 @23751 has 8 MA's), (Start: 28 @23757 has 3 MA's), (43, 23883), (50, 23928),

Gene: Bigfoot_29 Start: 23566, Stop: 23865, Start Num: 22

Candidate Starts for Bigfoot_29:

(Start: 6 @23476 has 3 MA's), (Start: 22 @23566 has 197 MA's), (Start: 23 @23572 has 9 MA's), (34, 23635), (38, 23650), (43, 23713), (47, 23731), (59, 23794),

Gene: BillKnuckles_31 Start: 24444, Stop: 24791, Start Num: 22

Candidate Starts for BillKnuckles_31:

(Start: 6 @24354 has 3 MA's), (Start: 22 @24444 has 197 MA's), (Start: 27 @24465 has 8 MA's), (Start: 28 @24471 has 3 MA's), (43, 24597), (50, 24642),

Gene: Bircsak_30 Start: 24216, Stop: 24563, Start Num: 22

Candidate Starts for Bircsak_30:

(Start: 6 @24126 has 3 MA's), (Start: 22 @24216 has 197 MA's), (Start: 27 @24237 has 8 MA's), (Start: 28 @24243 has 3 MA's), (43, 24369), (50, 24414),

Gene: Blackflame_30 Start: 23739, Stop: 24086, Start Num: 22

Candidate Starts for Blackflame_30:

(Start: 6 @23649 has 3 MA's), (Start: 22 @23739 has 197 MA's), (Start: 27 @23760 has 8 MA's), (Start: 28 @23766 has 3 MA's), (43, 23892), (50, 23937),

Gene: Blesser_30 Start: 24147, Stop: 24494, Start Num: 22

Candidate Starts for Blesser_30:

(Start: 6 @24057 has 3 MA's), (Start: 22 @24147 has 197 MA's), (Start: 27 @24168 has 8 MA's), (Start: 28 @24174 has 3 MA's), (43, 24300), (50, 24345),

Gene: BluSpix_31 Start: 23974, Stop: 24321, Start Num: 22

Candidate Starts for BluSpix_31:

(Start: 6 @23884 has 3 MA's), (Start: 22 @23974 has 197 MA's), (Start: 27 @23995 has 8 MA's), (Start: 28 @24001 has 3 MA's), (43, 24127), (50, 24172),

Gene: Blue_30 Start: 24212, Stop: 24559, Start Num: 22

Candidate Starts for Blue_30:

(Start: 6 @24122 has 3 MA's), (Start: 22 @24212 has 197 MA's), (Start: 27 @24233 has 8 MA's), (Start: 28 @24239 has 3 MA's), (43, 24365), (50, 24410),

Gene: Bob3_29 Start: 23306, Stop: 23599, Start Num: 23

Candidate Starts for Bob3_29:

(Start: 6 @23210 has 3 MA's), (Start: 22 @23300 has 197 MA's), (Start: 23 @23306 has 9 MA's), (34, 23369), (38, 23384), (43, 23447), (47, 23465), (59, 23528),

Gene: BobbyDazzler_26 Start: 18805, Stop: 19125, Start Num: 24

Candidate Starts for BobbyDazzler_26:

(Start: 24 @18805 has 33 MA's), (Start: 29 @18832 has 3 MA's), (39, 18889), (40, 18919), (43, 18952), (51, 19003), (57, 19036), (59, 19054),

Gene: Bonanza_26 Start: 18734, Stop: 19054, Start Num: 24

Candidate Starts for Bonanza_26:

(Start: 24 @18734 has 33 MA's), (Start: 29 @18761 has 3 MA's), (39, 18818), (40, 18848), (43, 18881), (51, 18932), (57, 18965), (59, 18983),

Gene: Bones_30 Start: 23672, Stop: 23965, Start Num: 23

Candidate Starts for Bones_30:

(Start: 6 @23576 has 3 MA's), (Start: 22 @23666 has 197 MA's), (Start: 23 @23672 has 9 MA's), (34, 23735), (38, 23750), (43, 23813), (47, 23831), (59, 23894),

Gene: Bradshaw_26 Start: 18760, Stop: 19080, Start Num: 24

Candidate Starts for Bradshaw_26:

(Start: 24 @18760 has 33 MA's), (Start: 29 @18787 has 3 MA's), (39, 18844), (40, 18874), (43, 18907), (51, 18958), (59, 19009),

Gene: BrazzalePHS_44 Start: 31375, Stop: 31797, Start Num: 9

Candidate Starts for BrazzalePHS_44:

(Start: 9 @31375 has 45 MA's), (Start: 12 @31384 has 1 MA's), (Start: 19 @31420 has 1 MA's), (44, 31594), (46, 31609), (51, 31642), (53, 31651), (54, 31657), (58, 31696), (65, 31759),

Gene: Briton15_32 Start: 24011, Stop: 24358, Start Num: 22

Candidate Starts for Briton15_32:

(Start: 6 @23921 has 3 MA's), (Start: 22 @24011 has 197 MA's), (Start: 27 @24032 has 8 MA's), (Start: 28 @24038 has 3 MA's), (43, 24164), (50, 24209),

Gene: Bruns_29 Start: 23641, Stop: 23988, Start Num: 22

Candidate Starts for Bruns_29:

(Start: 6 @23551 has 3 MA's), (Start: 22 @23641 has 197 MA's), (Start: 27 @23662 has 8 MA's), (Start: 28 @23668 has 3 MA's), (43, 23794), (50, 23839),

Gene: Bryce_26 Start: 18734, Stop: 19054, Start Num: 24

Candidate Starts for Bryce_26:

(Start: 24 @18734 has 33 MA's), (Start: 29 @18761 has 3 MA's), (39, 18818), (40, 18848), (43, 18881), (51, 18932), (57, 18965), (59, 18983),

Gene: Burton_31 Start: 23861, Stop: 24208, Start Num: 22

Candidate Starts for Burton_31:

(Start: 6 @23771 has 3 MA's), (Start: 22 @23861 has 197 MA's), (Start: 27 @23882 has 8 MA's), (Start: 28 @23888 has 3 MA's), (43, 24014), (50, 24059),

Gene: Busephilis_44 Start: 31316, Stop: 31738, Start Num: 9

Candidate Starts for Busephilis_44:

(Start: 9 @31316 has 45 MA's), (Start: 12 @31325 has 1 MA's), (Start: 19 @31361 has 1 MA's), (44, 31535), (46, 31550), (51, 31583), (53, 31592), (54, 31598), (65, 31700),

Gene: Buttons_32 Start: 24723, Stop: 25049, Start Num: 27

Candidate Starts for Buttons_32:

(Start: 6 @24612 has 3 MA's), (Start: 22 @24702 has 197 MA's), (Start: 27 @24723 has 8 MA's),
(Start: 28 @24729 has 3 MA's), (43, 24855), (50, 24900),

Gene: Bxb1_28 Start: 23812, Stop: 24159, Start Num: 22

Candidate Starts for Bxb1_28:

(Start: 6 @23722 has 3 MA's), (Start: 22 @23812 has 197 MA's), (Start: 27 @23833 has 8 MA's),
(Start: 28 @23839 has 3 MA's), (43, 23965), (50, 24010),

Gene: CactusRose_29 Start: 23661, Stop: 23960, Start Num: 22

Candidate Starts for CactusRose_29:

(Start: 6 @23571 has 3 MA's), (Start: 22 @23661 has 197 MA's), (Start: 23 @23667 has 9 MA's), (34,
23730), (38, 23745), (43, 23808), (47, 23826), (59, 23889),

Gene: Carlyle_32 Start: 24541, Stop: 24888, Start Num: 22

Candidate Starts for Carlyle_32:

(Start: 6 @24451 has 3 MA's), (Start: 22 @24541 has 197 MA's), (Start: 27 @24562 has 8 MA's),
(Start: 28 @24568 has 3 MA's), (43, 24694), (50, 24739),

Gene: CartmannCramer_30 Start: 25759, Stop: 26106, Start Num: 22

Candidate Starts for CartmannCramer_30:

(Start: 6 @25669 has 3 MA's), (Start: 22 @25759 has 197 MA's), (Start: 27 @25780 has 8 MA's),
(Start: 28 @25786 has 3 MA's), (43, 25912), (50, 25957),

Gene: CatBus_32 Start: 25269, Stop: 25589, Start Num: 28

Candidate Starts for CatBus_32:

(Start: 6 @25152 has 3 MA's), (Start: 22 @25242 has 197 MA's), (Start: 27 @25263 has 8 MA's),
(Start: 28 @25269 has 3 MA's), (43, 25395), (50, 25440),

Gene: Chanagan_29 Start: 23326, Stop: 23673, Start Num: 22

Candidate Starts for Chanagan_29:

(Start: 6 @23236 has 3 MA's), (Start: 22 @23326 has 197 MA's), (Start: 27 @23347 has 8 MA's),
(Start: 28 @23353 has 3 MA's), (43, 23479), (50, 23524),

Gene: ChristmasHams_31 Start: 23770, Stop: 24063, Start Num: 23

Candidate Starts for ChristmasHams_31:

(Start: 6 @23674 has 3 MA's), (Start: 22 @23764 has 197 MA's), (Start: 23 @23770 has 9 MA's), (34,
23833), (38, 23848), (43, 23911), (47, 23929), (59, 23992),

Gene: Ciao_30 Start: 23669, Stop: 24016, Start Num: 22

Candidate Starts for Ciao_30:

(Start: 6 @23579 has 3 MA's), (Start: 22 @23669 has 197 MA's), (Start: 27 @23690 has 8 MA's),
(Start: 28 @23696 has 3 MA's), (43, 23822), (50, 23867),

Gene: Cinna_41 Start: 31628, Stop: 32053, Start Num: 8

Candidate Starts for Cinna_41:

(Start: 8 @31628 has 3 MA's), (Start: 11 @31640 has 3 MA's), (46, 31865), (55, 31919),

Gene: ClearAsMud_47 Start: 31456, Stop: 31878, Start Num: 9

Candidate Starts for ClearAsMud_47:

(Start: 9 @31456 has 45 MA's), (Start: 12 @31465 has 1 MA's), (Start: 19 @31501 has 1 MA's), (44,
31675), (46, 31690), (51, 31723), (53, 31732), (54, 31738), (58, 31777), (65, 31840),

Gene: ConceptII_32 Start: 24683, Stop: 25030, Start Num: 22

Candidate Starts for ConceptII_32:

(Start: 6 @24593 has 3 MA's), (Start: 22 @24683 has 197 MA's), (Start: 27 @24704 has 8 MA's),
(Start: 28 @24710 has 3 MA's), (43, 24836), (50, 24881),

Gene: Corvo_31 Start: 24678, Stop: 25025, Start Num: 22

Candidate Starts for Corvo_31:

(Start: 6 @24588 has 3 MA's), (Start: 22 @24678 has 197 MA's), (Start: 27 @24699 has 8 MA's),
(Start: 28 @24705 has 3 MA's), (43, 24831), (50, 24876),

Gene: CosmicSans_26 Start: 18760, Stop: 19080, Start Num: 24

Candidate Starts for CosmicSans_26:

(Start: 24 @18760 has 33 MA's), (Start: 29 @18787 has 3 MA's), (39, 18844), (40, 18874), (43, 18907),
(51, 18958), (59, 19009),

Gene: Cranjis_46 Start: 31535, Stop: 31957, Start Num: 9

Candidate Starts for Cranjis_46:

(Start: 9 @31535 has 45 MA's), (Start: 12 @31544 has 1 MA's), (Start: 19 @31580 has 1 MA's), (44,
31754), (46, 31769), (51, 31802), (53, 31811), (54, 31817), (58, 31856), (65, 31919),

Gene: CrazyRich_44 Start: 31344, Stop: 31766, Start Num: 9

Candidate Starts for CrazyRich_44:

(Start: 9 @31344 has 45 MA's), (Start: 12 @31353 has 1 MA's), (Start: 19 @31389 has 1 MA's), (44,
31563), (46, 31578), (51, 31611), (53, 31620), (54, 31626), (58, 31665), (65, 31728),

Gene: Cressida_43 Start: 31098, Stop: 31520, Start Num: 9

Candidate Starts for Cressida_43:

(Start: 9 @31098 has 45 MA's), (Start: 10 @31101 has 1 MA's), (Start: 11 @31104 has 3 MA's), (Start:
12 @31107 has 1 MA's), (Start: 19 @31143 has 1 MA's), (Start: 24 @31173 has 33 MA's), (43, 31314),
(46, 31332), (55, 31386), (63, 31473), (65, 31482),

Gene: Crisis_46 Start: 31335, Stop: 31757, Start Num: 9

Candidate Starts for Crisis_46:

(Start: 9 @31335 has 45 MA's), (Start: 12 @31344 has 1 MA's), (Start: 19 @31380 has 1 MA's), (44,
31554), (46, 31569), (51, 31602), (53, 31611), (54, 31617), (65, 31719),

Gene: Crispicous1_29 Start: 23255, Stop: 23602, Start Num: 22

Candidate Starts for Crispicous1_29:

(Start: 6 @23165 has 3 MA's), (Start: 22 @23255 has 197 MA's), (Start: 27 @23276 has 8 MA's),
(Start: 28 @23282 has 3 MA's), (43, 23408), (50, 23453),

Gene: Cueyllyss_30 Start: 23899, Stop: 24198, Start Num: 22

Candidate Starts for Cueyllyss_30:

(Start: 6 @23809 has 3 MA's), (Start: 22 @23899 has 197 MA's), (Start: 23 @23905 has 9 MA's), (34,
23968), (38, 23983), (43, 24046), (47, 24064), (59, 24127),

Gene: DD5_31 Start: 24355, Stop: 24792, Start Num: 6

Candidate Starts for DD5_31:

(Start: 6 @24355 has 3 MA's), (Start: 22 @24445 has 197 MA's), (Start: 27 @24466 has 8 MA's),
(Start: 28 @24472 has 3 MA's), (43, 24598), (50, 24643),

Gene: Dexes_31 Start: 24407, Stop: 24754, Start Num: 22

Candidate Starts for Dexes_31:

(Start: 6 @24317 has 3 MA's), (Start: 22 @24407 has 197 MA's), (Start: 27 @24428 has 8 MA's),
(Start: 28 @24434 has 3 MA's), (43, 24560), (50, 24605),

Gene: Dinger_26 Start: 18730, Stop: 19050, Start Num: 24

Candidate Starts for Dinger_26:

(Start: 24 @18730 has 33 MA's), (Start: 29 @18757 has 3 MA's), (40, 18844), (43, 18877), (51, 18928),
(59, 18979),

Gene: DirtDevil_32 Start: 25077, Stop: 25397, Start Num: 28

Candidate Starts for DirtDevil_32:

(Start: 6 @24960 has 3 MA's), (Start: 22 @25050 has 197 MA's), (Start: 27 @25071 has 8 MA's),
(Start: 28 @25077 has 3 MA's), (43, 25203), (50, 25248),

Gene: Doom_31 Start: 24515, Stop: 24862, Start Num: 22

Candidate Starts for Doom_31:

(Start: 6 @24425 has 3 MA's), (Start: 22 @24515 has 197 MA's), (Start: 27 @24536 has 8 MA's),
(Start: 28 @24542 has 3 MA's), (43, 24668), (50, 24713),

Gene: DrFeelGood_29 Start: 24118, Stop: 24465, Start Num: 22

Candidate Starts for DrFeelGood_29:

(Start: 6 @24028 has 3 MA's), (Start: 22 @24118 has 197 MA's), (Start: 27 @24139 has 8 MA's),
(Start: 28 @24145 has 3 MA's), (43, 24271), (50, 24316),

Gene: DreamCatcher_33 Start: 25132, Stop: 25431, Start Num: 22

Candidate Starts for DreamCatcher_33:

(Start: 6 @25042 has 3 MA's), (Start: 22 @25132 has 197 MA's), (Start: 23 @25138 has 9 MA's), (34,
25201), (38, 25216), (43, 25279), (47, 25297), (59, 25360),

Gene: Dreamboat_31 Start: 23684, Stop: 24031, Start Num: 22

Candidate Starts for Dreamboat_31:

(Start: 6 @23594 has 3 MA's), (Start: 22 @23684 has 197 MA's), (Start: 27 @23705 has 8 MA's),
(Start: 28 @23711 has 3 MA's), (43, 23837), (50, 23882),

Gene: Dulcie_29 Start: 23381, Stop: 23728, Start Num: 22

Candidate Starts for Dulcie_29:

(Start: 6 @23291 has 3 MA's), (Start: 22 @23381 has 197 MA's), (Start: 27 @23402 has 8 MA's),
(Start: 28 @23408 has 3 MA's), (43, 23534), (50, 23579),

Gene: Dussy_31 Start: 23946, Stop: 24293, Start Num: 22

Candidate Starts for Dussy_31:

(Start: 6 @23856 has 3 MA's), (Start: 22 @23946 has 197 MA's), (Start: 27 @23967 has 8 MA's),
(Start: 28 @23973 has 3 MA's), (43, 24099), (50, 24144),

Gene: Dynamix_31 Start: 23763, Stop: 24110, Start Num: 22

Candidate Starts for Dynamix_31:

(Start: 6 @23673 has 3 MA's), (Start: 22 @23763 has 197 MA's), (Start: 27 @23784 has 8 MA's),
(Start: 28 @23790 has 3 MA's), (43, 23916), (50, 23961),

Gene: EarickHC_45 Start: 31258, Stop: 31680, Start Num: 9

Candidate Starts for EarickHC_45:

(Start: 9 @31258 has 45 MA's), (Start: 12 @31267 has 1 MA's), (Start: 19 @31303 has 1 MA's), (44,
31477), (46, 31492), (51, 31525), (53, 31534), (54, 31540), (58, 31579), (65, 31642),

Gene: Edtherson_31 Start: 24516, Stop: 24809, Start Num: 23

Candidate Starts for Edtherson_31:

(Start: 6 @24420 has 3 MA's), (Start: 22 @24510 has 197 MA's), (Start: 23 @24516 has 9 MA's), (34, 24579), (38, 24594), (43, 24657), (47, 24675), (59, 24738),

Gene: EnzoK_31 Start: 23935, Stop: 24282, Start Num: 22

Candidate Starts for EnzoK_31:

(Start: 6 @23845 has 3 MA's), (Start: 22 @23935 has 197 MA's), (Start: 27 @23956 has 8 MA's), (Start: 28 @23962 has 3 MA's), (43, 24088), (50, 24133),

Gene: Erik_26 Start: 18759, Stop: 19079, Start Num: 24

Candidate Starts for Erik_26:

(Start: 24 @18759 has 33 MA's), (Start: 29 @18786 has 3 MA's), (39, 18843), (40, 18873), (43, 18906), (51, 18957), (59, 19008),

Gene: Espica_26 Start: 18760, Stop: 19080, Start Num: 24

Candidate Starts for Espica_26:

(Start: 24 @18760 has 33 MA's), (Start: 29 @18787 has 3 MA's), (39, 18844), (40, 18874), (43, 18907), (51, 18958), (59, 19009),

Gene: Espresso_30 Start: 23827, Stop: 24174, Start Num: 22

Candidate Starts for Espresso_30:

(Start: 6 @23737 has 3 MA's), (Start: 22 @23827 has 197 MA's), (Start: 27 @23848 has 8 MA's), (Start: 28 @23854 has 3 MA's), (43, 23980), (50, 24025), (67, 24166),

Gene: Euphoria_30 Start: 23717, Stop: 24064, Start Num: 22

Candidate Starts for Euphoria_30:

(Start: 6 @23627 has 3 MA's), (Start: 22 @23717 has 197 MA's), (Start: 27 @23738 has 8 MA's), (Start: 28 @23744 has 3 MA's), (43, 23870), (50, 23915),

Gene: Eyeball_30 Start: 23522, Stop: 23869, Start Num: 22

Candidate Starts for Eyeball_30:

(Start: 6 @23432 has 3 MA's), (Start: 22 @23522 has 197 MA's), (Start: 27 @23543 has 8 MA's), (Start: 28 @23549 has 3 MA's), (43, 23675), (50, 23720),

Gene: Fajezeel_32 Start: 24032, Stop: 24379, Start Num: 22

Candidate Starts for Fajezeel_32:

(Start: 6 @23942 has 3 MA's), (Start: 22 @24032 has 197 MA's), (Start: 27 @24053 has 8 MA's), (Start: 28 @24059 has 3 MA's), (43, 24185), (50, 24230),

Gene: Fascinus_29 Start: 23592, Stop: 23885, Start Num: 23

Candidate Starts for Fascinus_29:

(Start: 6 @23496 has 3 MA's), (Start: 22 @23586 has 197 MA's), (Start: 23 @23592 has 9 MA's), (34, 23655), (38, 23670), (43, 23733), (47, 23751), (59, 23814),

Gene: Fenn_31 Start: 25397, Stop: 25696, Start Num: 22

Candidate Starts for Fenn_31:

(Start: 6 @25307 has 3 MA's), (Start: 22 @25397 has 197 MA's), (Start: 23 @25403 has 9 MA's), (34, 25466), (38, 25481), (43, 25544), (47, 25562), (59, 25625),

Gene: Fireman_46 Start: 32867, Stop: 33289, Start Num: 9

Candidate Starts for Fireman_46:

(Start: 9 @32867 has 45 MA's), (Start: 10 @32870 has 1 MA's), (Start: 19 @32912 has 1 MA's), (46, 33101), (49, 33122),

Gene: Forsytheast_30 Start: 23956, Stop: 24303, Start Num: 22

Candidate Starts for Forsytheast_30:

(Start: 6 @23866 has 3 MA's), (Start: 22 @23956 has 197 MA's), (Start: 27 @23977 has 8 MA's), (Start: 28 @23983 has 3 MA's), (43, 24109), (50, 24154),

Gene: Francis47_30 Start: 24269, Stop: 24568, Start Num: 22

Candidate Starts for Francis47_30:

(Start: 6 @24179 has 3 MA's), (Start: 22 @24269 has 197 MA's), (Start: 23 @24275 has 9 MA's), (34, 24338), (38, 24353), (43, 24416), (47, 24434), (59, 24497),

Gene: Frogopper_31 Start: 23684, Stop: 24031, Start Num: 22

Candidate Starts for Frogopper_31:

(Start: 6 @23594 has 3 MA's), (Start: 22 @23684 has 197 MA's), (Start: 27 @23705 has 8 MA's), (Start: 28 @23711 has 3 MA's), (43, 23837), (50, 23882),

Gene: Fushigi_31 Start: 24141, Stop: 24488, Start Num: 22

Candidate Starts for Fushigi_31:

(Start: 6 @24051 has 3 MA's), (Start: 22 @24141 has 197 MA's), (Start: 27 @24162 has 8 MA's), (Start: 28 @24168 has 3 MA's), (43, 24294), (50, 24339),

Gene: GMonster_29 Start: 23101, Stop: 23448, Start Num: 22

Candidate Starts for GMonster_29:

(Start: 6 @23011 has 3 MA's), (Start: 22 @23101 has 197 MA's), (Start: 27 @23122 has 8 MA's), (Start: 28 @23128 has 3 MA's), (43, 23254), (50, 23299),

Gene: Gachnar_30 Start: 23743, Stop: 24090, Start Num: 22

Candidate Starts for Gachnar_30:

(Start: 6 @23653 has 3 MA's), (Start: 22 @23743 has 197 MA's), (Start: 27 @23764 has 8 MA's), (Start: 28 @23770 has 3 MA's), (43, 23896), (50, 23941),

Gene: GageAP_32 Start: 24455, Stop: 24802, Start Num: 22

Candidate Starts for GageAP_32:

(Start: 6 @24365 has 3 MA's), (Start: 22 @24455 has 197 MA's), (Start: 27 @24476 has 8 MA's), (Start: 28 @24482 has 3 MA's), (43, 24608), (50, 24653),

Gene: Ganandorf_44 Start: 31397, Stop: 31819, Start Num: 9

Candidate Starts for Ganandorf_44:

(Start: 9 @31397 has 45 MA's), (Start: 12 @31406 has 1 MA's), (Start: 19 @31442 has 1 MA's), (44, 31616), (46, 31631), (51, 31664), (53, 31673), (54, 31679), (58, 31718), (65, 31781),

Gene: Gandalf20_31 Start: 24560, Stop: 24907, Start Num: 22

Candidate Starts for Gandalf20_31:

(Start: 6 @24470 has 3 MA's), (Start: 22 @24560 has 197 MA's), (Start: 27 @24581 has 8 MA's), (Start: 28 @24587 has 3 MA's), (43, 24713), (50, 24758),

Gene: Gina_46 Start: 30994, Stop: 31422, Start Num: 9

Candidate Starts for Gina_46:

(2, 30892), (5, 30967), (Start: 9 @30994 has 45 MA's), (Start: 12 @31003 has 1 MA's), (Start: 19 @31042 has 1 MA's), (44, 31216), (46, 31231), (53, 31273),

Gene: Glorp_46 Start: 31398, Stop: 31820, Start Num: 9
Candidate Starts for Glorp_46:
(Start: 9 @31398 has 45 MA's), (Start: 12 @31407 has 1 MA's), (Start: 19 @31443 has 1 MA's), (44, 31617), (46, 31632), (51, 31665), (53, 31674), (54, 31680), (58, 31719), (65, 31782),

Gene: Gollum_26 Start: 18760, Stop: 19080, Start Num: 24
Candidate Starts for Gollum_26:
(Start: 24 @18760 has 33 MA's), (Start: 29 @18787 has 3 MA's), (39, 18844), (40, 18874), (43, 18907), (51, 18958), (59, 19009),

Gene: Gompeii16_30 Start: 24217, Stop: 24564, Start Num: 22
Candidate Starts for Gompeii16_30:
(Start: 6 @24127 has 3 MA's), (Start: 22 @24217 has 197 MA's), (Start: 27 @24238 has 8 MA's), (Start: 28 @24244 has 3 MA's), (43, 24370), (50, 24415),

Gene: Graduation_32 Start: 24486, Stop: 24785, Start Num: 22
Candidate Starts for Graduation_32:
(Start: 6 @24396 has 3 MA's), (Start: 22 @24486 has 197 MA's), (Start: 23 @24492 has 9 MA's), (34, 24555), (38, 24570), (43, 24633), (47, 24651), (59, 24714),

Gene: GrecoEtereo_32 Start: 24526, Stop: 24873, Start Num: 22
Candidate Starts for GrecoEtereo_32:
(Start: 6 @24436 has 3 MA's), (Start: 22 @24526 has 197 MA's), (Start: 27 @24547 has 8 MA's), (Start: 28 @24553 has 3 MA's), (43, 24679), (50, 24724),

Gene: Greg_32 Start: 24032, Stop: 24379, Start Num: 22
Candidate Starts for Greg_32:
(Start: 6 @23942 has 3 MA's), (Start: 22 @24032 has 197 MA's), (Start: 27 @24053 has 8 MA's), (Start: 28 @24059 has 3 MA's), (43, 24185), (50, 24230),

Gene: GroundGoblin_32 Start: 25050, Stop: 25397, Start Num: 22
Candidate Starts for GroundGoblin_32:
(Start: 6 @24960 has 3 MA's), (Start: 22 @25050 has 197 MA's), (Start: 27 @25071 has 8 MA's), (Start: 28 @25077 has 3 MA's), (43, 25203), (50, 25248),

Gene: Gwendoluna_32 Start: 25674, Stop: 26021, Start Num: 22
Candidate Starts for Gwendoluna_32:
(Start: 6 @25584 has 3 MA's), (Start: 22 @25674 has 197 MA's), (Start: 27 @25695 has 8 MA's), (Start: 28 @25701 has 3 MA's), (43, 25827), (50, 25872),

Gene: Gyzlar_32 Start: 24980, Stop: 25327, Start Num: 22
Candidate Starts for Gyzlar_32:
(Start: 6 @24890 has 3 MA's), (Start: 22 @24980 has 197 MA's), (Start: 27 @25001 has 8 MA's), (Start: 28 @25007 has 3 MA's), (43, 25133), (50, 25178),

Gene: Hami1_32 Start: 24147, Stop: 24473, Start Num: 27
Candidate Starts for Hami1_32:
(Start: 6 @24036 has 3 MA's), (Start: 22 @24126 has 197 MA's), (Start: 27 @24147 has 8 MA's), (Start: 28 @24153 has 3 MA's), (43, 24279), (50, 24324),

Gene: HanShotFirst_30 Start: 23660, Stop: 24007, Start Num: 22
Candidate Starts for HanShotFirst_30:

(Start: 6 @23570 has 3 MA's), (Start: 22 @23660 has 197 MA's), (Start: 27 @23681 has 8 MA's),
(Start: 28 @23687 has 3 MA's), (43, 23813), (50, 23858),

Gene: Harlequin_26 Start: 18710, Stop: 19030, Start Num: 24

Candidate Starts for Harlequin_26:

(Start: 24 @18710 has 33 MA's), (Start: 29 @18737 has 3 MA's), (39, 18794), (40, 18824), (43, 18857),
(51, 18908), (57, 18941), (59, 18959),

Gene: HarryOW_31 Start: 24114, Stop: 24461, Start Num: 22

Candidate Starts for HarryOW_31:

(Start: 6 @24024 has 3 MA's), (Start: 22 @24114 has 197 MA's), (Start: 27 @24135 has 8 MA's),
(Start: 28 @24141 has 3 MA's), (43, 24267), (50, 24312),

Gene: Hermeonysus_44 Start: 31264, Stop: 31686, Start Num: 9

Candidate Starts for Hermeonysus_44:

(Start: 9 @31264 has 45 MA's), (Start: 12 @31273 has 1 MA's), (Start: 19 @31309 has 1 MA's), (44,
31483), (46, 31498), (51, 31531), (53, 31540), (54, 31546), (58, 31585), (65, 31648),

Gene: Hermia_33 Start: 25242, Stop: 25589, Start Num: 22

Candidate Starts for Hermia_33:

(Start: 6 @25152 has 3 MA's), (Start: 22 @25242 has 197 MA's), (Start: 27 @25263 has 8 MA's),
(Start: 28 @25269 has 3 MA's), (43, 25395), (50, 25440),

Gene: HermioneGrange_30 Start: 23688, Stop: 23987, Start Num: 22

Candidate Starts for HermioneGrange_30:

(Start: 6 @23598 has 3 MA's), (Start: 22 @23688 has 197 MA's), (Start: 23 @23694 has 9 MA's), (34,
23757), (38, 23772), (43, 23835), (47, 23853), (59, 23916),

Gene: Hiro_26 Start: 19043, Stop: 19336, Start Num: 29

Candidate Starts for Hiro_26:

(Start: 24 @19016 has 33 MA's), (Start: 29 @19043 has 3 MA's), (39, 19100), (40, 19130), (43, 19163),
(51, 19214), (57, 19247), (59, 19265),

Gene: Homines_30 Start: 24013, Stop: 24360, Start Num: 22

Candidate Starts for Homines_30:

(Start: 6 @23923 has 3 MA's), (Start: 22 @24013 has 197 MA's), (Start: 27 @24034 has 8 MA's),
(Start: 28 @24040 has 3 MA's), (43, 24166), (50, 24211),

Gene: Honeyfin_46 Start: 31585, Stop: 32007, Start Num: 9

Candidate Starts for Honeyfin_46:

(3, 31504), (Start: 9 @31585 has 45 MA's), (Start: 12 @31594 has 1 MA's), (Start: 19 @31630 has 1
MA's), (44, 31804), (46, 31819), (51, 31852), (53, 31861), (54, 31867), (65, 31969),

Gene: Hope4ever_30 Start: 24129, Stop: 24476, Start Num: 22

Candidate Starts for Hope4ever_30:

(Start: 6 @24039 has 3 MA's), (Start: 22 @24129 has 197 MA's), (Start: 27 @24150 has 8 MA's),
(Start: 28 @24156 has 3 MA's), (43, 24282), (50, 24327),

Gene: ILeeKay_32 Start: 23893, Stop: 24240, Start Num: 22

Candidate Starts for ILeeKay_32:

(Start: 6 @23803 has 3 MA's), (Start: 22 @23893 has 197 MA's), (Start: 27 @23914 has 8 MA's),
(Start: 28 @23920 has 3 MA's), (43, 24046), (50, 24091),

Gene: Ichabod_31 Start: 23917, Stop: 24264, Start Num: 22

Candidate Starts for Ichabod_31:

(Start: 6 @23827 has 3 MA's), (Start: 22 @23917 has 197 MA's), (Start: 27 @23938 has 8 MA's),
(Start: 28 @23944 has 3 MA's), (43, 24070), (50, 24115),

Gene: IgnatiusPatJac_30 Start: 23996, Stop: 24322, Start Num: 27

Candidate Starts for IgnatiusPatJac_30:

(Start: 6 @23885 has 3 MA's), (Start: 22 @23975 has 197 MA's), (Start: 27 @23996 has 8 MA's),
(Start: 28 @24002 has 3 MA's), (43, 24128), (50, 24173),

Gene: Inyanga_29 Start: 23496, Stop: 23843, Start Num: 22

Candidate Starts for Inyanga_29:

(Start: 6 @23406 has 3 MA's), (Start: 22 @23496 has 197 MA's), (Start: 27 @23517 has 8 MA's),
(Start: 28 @23523 has 3 MA's), (43, 23649), (50, 23694),

Gene: Iqorha_29 Start: 23495, Stop: 23842, Start Num: 22

Candidate Starts for Iqorha_29:

(Start: 6 @23405 has 3 MA's), (Start: 22 @23495 has 197 MA's), (Start: 27 @23516 has 8 MA's),
(Start: 28 @23522 has 3 MA's), (43, 23648), (50, 23693),

Gene: JC27_32 Start: 24629, Stop: 24976, Start Num: 22

Candidate Starts for JC27_32:

(Start: 6 @24539 has 3 MA's), (Start: 22 @24629 has 197 MA's), (Start: 27 @24650 has 8 MA's),
(Start: 28 @24656 has 3 MA's), (43, 24782), (50, 24827),

Gene: Jace_21 Start: 17774, Stop: 18232, Start Num: 7

Candidate Starts for Jace_21:

(1, 17681), (Start: 7 @17774 has 1 MA's), (Start: 12 @17798 has 1 MA's), (16, 17813), (32, 17915),
(41, 17990), (46, 18035), (52, 18074), (53, 18077), (61, 18149),

Gene: JackSparrow_31 Start: 24091, Stop: 24438, Start Num: 22

Candidate Starts for JackSparrow_31:

(Start: 6 @24001 has 3 MA's), (Start: 22 @24091 has 197 MA's), (Start: 27 @24112 has 8 MA's),
(Start: 28 @24118 has 3 MA's), (43, 24244), (50, 24289),

Gene: Jasper_31 Start: 23570, Stop: 23917, Start Num: 22

Candidate Starts for Jasper_31:

(Start: 6 @23480 has 3 MA's), (Start: 22 @23570 has 197 MA's), (Start: 27 @23591 has 8 MA's),
(Start: 28 @23597 has 3 MA's), (43, 23723), (50, 23768),

Gene: Jayden_46 Start: 31710, Stop: 32129, Start Num: 9

Candidate Starts for Jayden_46:

(Start: 9 @31710 has 45 MA's), (Start: 12 @31719 has 1 MA's), (Start: 19 @31752 has 1 MA's), (Start:
23 @31779 has 9 MA's), (36, 31845), (44, 31926), (46, 31941), (50, 31968), (51, 31974), (53, 31983),
(55, 31995),

Gene: Jefe_45 Start: 31322, Stop: 31744, Start Num: 9

Candidate Starts for Jefe_45:

(Start: 9 @31322 has 45 MA's), (Start: 12 @31331 has 1 MA's), (Start: 19 @31367 has 1 MA's), (44,
31541), (46, 31556), (51, 31589), (53, 31598), (54, 31604), (58, 31643),

Gene: Jerm2_31 Start: 23960, Stop: 24259, Start Num: 22

Candidate Starts for Jerm2_31:

(Start: 6 @23870 has 3 MA's), (Start: 22 @23960 has 197 MA's), (Start: 23 @23966 has 9 MA's), (34, 24029), (38, 24044), (43, 24107), (47, 24125), (59, 24188),

Gene: Jester_26 Start: 18704, Stop: 19024, Start Num: 24

Candidate Starts for Jester_26:

(Start: 24 @18704 has 33 MA's), (Start: 29 @18731 has 3 MA's), (39, 18788), (40, 18818), (43, 18851), (51, 18902), (57, 18935), (59, 18953),

Gene: Jollipop_45 Start: 31661, Stop: 32083, Start Num: 9

Candidate Starts for Jollipop_45:

(Start: 9 @31661 has 45 MA's), (Start: 12 @31670 has 1 MA's), (Start: 19 @31706 has 1 MA's), (44, 31880), (46, 31895), (51, 31928), (53, 31937), (54, 31943), (58, 31982), (65, 32045),

Gene: Jorgensen_30 Start: 23624, Stop: 23971, Start Num: 22

Candidate Starts for Jorgensen_30:

(Start: 6 @23534 has 3 MA's), (Start: 22 @23624 has 197 MA's), (Start: 27 @23645 has 8 MA's), (Start: 28 @23651 has 3 MA's), (43, 23777), (50, 23822),

Gene: JuliaChild_32 Start: 24269, Stop: 24616, Start Num: 22

Candidate Starts for JuliaChild_32:

(Start: 6 @24179 has 3 MA's), (Start: 22 @24269 has 197 MA's), (Start: 27 @24290 has 8 MA's), (Start: 28 @24296 has 3 MA's), (43, 24422), (50, 24467),

Gene: KBG_31 Start: 24644, Stop: 24970, Start Num: 27

Candidate Starts for KBG_31:

(Start: 6 @24533 has 3 MA's), (Start: 22 @24623 has 197 MA's), (Start: 27 @24644 has 8 MA's), (Start: 28 @24650 has 3 MA's), (43, 24776), (50, 24821),

Gene: KSSJEB_30 Start: 23427, Stop: 23864, Start Num: 6

Candidate Starts for KSSJEB_30:

(Start: 6 @23427 has 3 MA's), (Start: 22 @23517 has 197 MA's), (Start: 27 @23538 has 8 MA's), (Start: 28 @23544 has 3 MA's), (43, 23670), (50, 23715),

Gene: KaiHaiDragon_45 Start: 31258, Stop: 31680, Start Num: 9

Candidate Starts for KaiHaiDragon_45:

(Start: 9 @31258 has 45 MA's), (Start: 12 @31267 has 1 MA's), (Start: 19 @31303 has 1 MA's), (44, 31477), (46, 31492), (51, 31525), (53, 31534), (54, 31540), (58, 31579), (65, 31642),

Gene: Kanely_31 Start: 24327, Stop: 24674, Start Num: 22

Candidate Starts for Kanely_31:

(Start: 6 @24237 has 3 MA's), (Start: 22 @24327 has 197 MA's), (Start: 27 @24348 has 8 MA's), (Start: 28 @24354 has 3 MA's), (43, 24480), (50, 24525),

Gene: Kenmech_33 Start: 25033, Stop: 25380, Start Num: 22

Candidate Starts for Kenmech_33:

(Start: 6 @24943 has 3 MA's), (Start: 22 @25033 has 197 MA's), (Start: 27 @25054 has 8 MA's), (Start: 28 @25060 has 3 MA's), (43, 25186), (50, 25231),

Gene: KikiBouba_32 Start: 25051, Stop: 25398, Start Num: 22

Candidate Starts for KikiBouba_32:

(Start: 6 @24961 has 3 MA's), (Start: 22 @25051 has 197 MA's), (Start: 27 @25072 has 8 MA's), (Start: 28 @25078 has 3 MA's), (43, 25204), (50, 25249),

Gene: Killigrew_28 Start: 23239, Stop: 23586, Start Num: 22

Candidate Starts for Killigrew_28:

(Start: 6 @23149 has 3 MA's), (Start: 22 @23239 has 197 MA's), (Start: 27 @23260 has 8 MA's),
(Start: 28 @23266 has 3 MA's), (43, 23392), (50, 23437),

Gene: Kowalski_44 Start: 31371, Stop: 31793, Start Num: 9

Candidate Starts for Kowalski_44:

(4, 31323), (Start: 9 @31371 has 45 MA's), (Start: 12 @31380 has 1 MA's), (Start: 19 @31416 has 1
MA's), (44, 31590), (46, 31605), (51, 31638), (53, 31647), (54, 31653), (58, 31692), (65, 31755),

Gene: Kozie_40 Start: 30705, Stop: 31127, Start Num: 9

Candidate Starts for Kozie_40:

(Start: 9 @30705 has 45 MA's), (37, 30849), (44, 30924), (48, 30951), (55, 30993),

Gene: Krishelle_26 Start: 19031, Stop: 19351, Start Num: 24

Candidate Starts for Krishelle_26:

(Start: 24 @19031 has 33 MA's), (Start: 29 @19058 has 3 MA's), (39, 19115), (40, 19145), (43, 19178),
(51, 19229), (57, 19262), (59, 19280),

Gene: Kugel_31 Start: 23900, Stop: 24247, Start Num: 22

Candidate Starts for Kugel_31:

(Start: 6 @23810 has 3 MA's), (Start: 22 @23900 has 197 MA's), (Start: 27 @23921 has 8 MA's),
(Start: 28 @23927 has 3 MA's), (43, 24053), (50, 24098),

Gene: KyMonks1A_32 Start: 24066, Stop: 24413, Start Num: 22

Candidate Starts for KyMonks1A_32:

(Start: 6 @23976 has 3 MA's), (Start: 22 @24066 has 197 MA's), (Start: 27 @24087 has 8 MA's),
(Start: 28 @24093 has 3 MA's), (43, 24219), (50, 24264),

Gene: Kykar_30 Start: 23709, Stop: 24035, Start Num: 27

Candidate Starts for Kykar_30:

(Start: 6 @23598 has 3 MA's), (Start: 22 @23688 has 197 MA's), (Start: 27 @23709 has 8 MA's),
(Start: 28 @23715 has 3 MA's), (43, 23841), (50, 23886),

Gene: Lamina13_30 Start: 23337, Stop: 23684, Start Num: 22

Candidate Starts for Lamina13_30:

(Start: 6 @23247 has 3 MA's), (Start: 22 @23337 has 197 MA's), (Start: 27 @23358 has 8 MA's),
(Start: 28 @23364 has 3 MA's), (43, 23490), (50, 23535),

Gene: Lesedi_29 Start: 23495, Stop: 23842, Start Num: 22

Candidate Starts for Lesedi_29:

(Start: 6 @23405 has 3 MA's), (Start: 22 @23495 has 197 MA's), (Start: 27 @23516 has 8 MA's),
(Start: 28 @23522 has 3 MA's), (43, 23648), (50, 23693),

Gene: Levia_30 Start: 24484, Stop: 24831, Start Num: 22

Candidate Starts for Levia_30:

(Start: 6 @24394 has 3 MA's), (Start: 22 @24484 has 197 MA's), (Start: 27 @24505 has 8 MA's),
(Start: 28 @24511 has 3 MA's), (43, 24637), (50, 24682),

Gene: Licorice_32 Start: 24724, Stop: 25071, Start Num: 22

Candidate Starts for Licorice_32:

(Start: 6 @24634 has 3 MA's), (Start: 22 @24724 has 197 MA's), (Start: 27 @24745 has 8 MA's),
(Start: 28 @24751 has 3 MA's), (43, 24877), (50, 24922),

Gene: LilBib_31 Start: 24937, Stop: 25284, Start Num: 22

Candidate Starts for LilBib_31:

(Start: 6 @24847 has 3 MA's), (Start: 22 @24937 has 197 MA's), (Start: 27 @24958 has 8 MA's),
(Start: 28 @24964 has 3 MA's), (43, 25090), (50, 25135),

Gene: Lillie_26 Start: 18760, Stop: 19080, Start Num: 24

Candidate Starts for Lillie_26:

(Start: 24 @18760 has 33 MA's), (Start: 29 @18787 has 3 MA's), (39, 18844), (40, 18874), (43, 18907),
(51, 18958), (59, 19009),

Gene: LittleFortune_46 Start: 31627, Stop: 32049, Start Num: 9

Candidate Starts for LittleFortune_46:

(Start: 9 @31627 has 45 MA's), (Start: 12 @31636 has 1 MA's), (Start: 19 @31672 has 1 MA's), (44,
31846), (46, 31861), (51, 31894), (53, 31903), (54, 31909), (58, 31948), (65, 32011),

Gene: Lockley_30 Start: 23678, Stop: 24025, Start Num: 22

Candidate Starts for Lockley_30:

(Start: 6 @23588 has 3 MA's), (Start: 22 @23678 has 197 MA's), (Start: 27 @23699 has 8 MA's),
(Start: 28 @23705 has 3 MA's), (43, 23831), (50, 23876),

Gene: Lopton_31 Start: 25139, Stop: 25486, Start Num: 22

Candidate Starts for Lopton_31:

(Start: 6 @25049 has 3 MA's), (Start: 22 @25139 has 197 MA's), (Start: 27 @25160 has 8 MA's),
(Start: 28 @25166 has 3 MA's), (43, 25292), (50, 25337),

Gene: Lucretia_45 Start: 31314, Stop: 31736, Start Num: 9

Candidate Starts for Lucretia_45:

(Start: 9 @31314 has 45 MA's), (Start: 12 @31323 has 1 MA's), (Start: 19 @31359 has 1 MA's), (44,
31533), (46, 31548), (51, 31581), (53, 31590), (54, 31596), (58, 31635), (65, 31698),

Gene: LunarLander_31 Start: 23893, Stop: 24186, Start Num: 23

Candidate Starts for LunarLander_31:

(Start: 6 @23797 has 3 MA's), (Start: 22 @23887 has 197 MA's), (Start: 23 @23893 has 9 MA's), (34,
23956), (38, 23971), (43, 24034), (47, 24052), (59, 24115),

Gene: MPlant7149_29 Start: 23320, Stop: 23613, Start Num: 23

Candidate Starts for MPlant7149_29:

(Start: 6 @23224 has 3 MA's), (Start: 22 @23314 has 197 MA's), (Start: 23 @23320 has 9 MA's), (34,
23383), (38, 23398), (43, 23461), (47, 23479), (59, 23542),

Gene: Magnar_30 Start: 23464, Stop: 23811, Start Num: 22

Candidate Starts for Magnar_30:

(Start: 6 @23374 has 3 MA's), (Start: 22 @23464 has 197 MA's), (Start: 27 @23485 has 8 MA's),
(Start: 28 @23491 has 3 MA's), (43, 23617), (50, 23662),

Gene: Magnito_29 Start: 23216, Stop: 23563, Start Num: 22

Candidate Starts for Magnito_29:

(Start: 6 @23126 has 3 MA's), (Start: 22 @23216 has 197 MA's), (Start: 27 @23237 has 8 MA's),
(Start: 28 @23243 has 3 MA's), (43, 23369), (50, 23414),

Gene: Makemake_30 Start: 24932, Stop: 25279, Start Num: 22

Candidate Starts for Makemake_30:

(Start: 6 @24842 has 3 MA's), (Start: 22 @24932 has 197 MA's), (Start: 27 @24953 has 8 MA's),
(Start: 28 @24959 has 3 MA's), (43, 25085), (50, 25130), (67, 25271),

Gene: Manatee_31 Start: 23462, Stop: 23809, Start Num: 22

Candidate Starts for Manatee_31:

(Start: 6 @23372 has 3 MA's), (Start: 22 @23462 has 197 MA's), (Start: 27 @23483 has 8 MA's),
(Start: 28 @23489 has 3 MA's), (43, 23615), (50, 23660),

Gene: Marcell_30 Start: 23952, Stop: 24299, Start Num: 22

Candidate Starts for Marcell_30:

(Start: 6 @23862 has 3 MA's), (Start: 22 @23952 has 197 MA's), (Start: 27 @23973 has 8 MA's),
(Start: 28 @23979 has 3 MA's), (43, 24105), (50, 24150),

Gene: Marchy_29 Start: 23257, Stop: 23604, Start Num: 22

Candidate Starts for Marchy_29:

(Start: 6 @23167 has 3 MA's), (Start: 22 @23257 has 197 MA's), (Start: 27 @23278 has 8 MA's),
(Start: 28 @23284 has 3 MA's), (43, 23410), (50, 23455),

Gene: Marco3_30 Start: 23852, Stop: 24199, Start Num: 22

Candidate Starts for Marco3_30:

(Start: 6 @23762 has 3 MA's), (Start: 22 @23852 has 197 MA's), (Start: 27 @23873 has 8 MA's),
(Start: 28 @23879 has 3 MA's), (43, 24005), (50, 24050),

Gene: Margaery_39 Start: 30479, Stop: 30901, Start Num: 9

Candidate Starts for Margaery_39:

(Start: 9 @30479 has 45 MA's), (Start: 12 @30488 has 1 MA's), (Start: 19 @30524 has 1 MA's), (Start:
29 @30581 has 3 MA's), (44, 30698), (46, 30713), (49, 30734), (55, 30767),

Gene: Marge_31 Start: 24352, Stop: 24699, Start Num: 22

Candidate Starts for Marge_31:

(Start: 6 @24262 has 3 MA's), (Start: 22 @24352 has 197 MA's), (Start: 27 @24373 has 8 MA's),
(Start: 28 @24379 has 3 MA's), (43, 24505), (50, 24550),

Gene: Maroc7_29 Start: 23456, Stop: 23803, Start Num: 22

Candidate Starts for Maroc7_29:

(Start: 6 @23366 has 3 MA's), (Start: 22 @23456 has 197 MA's), (Start: 27 @23477 has 8 MA's),
(Start: 28 @23483 has 3 MA's), (43, 23609), (50, 23654),

Gene: Marsha_30 Start: 24578, Stop: 24877, Start Num: 22

Candidate Starts for Marsha_30:

(Start: 6 @24488 has 3 MA's), (Start: 22 @24578 has 197 MA's), (Start: 23 @24584 has 9 MA's), (34,
24647), (38, 24662), (43, 24725), (47, 24743), (59, 24806),

Gene: MaryBeth_30 Start: 23884, Stop: 24231, Start Num: 22

Candidate Starts for MaryBeth_30:

(Start: 6 @23794 has 3 MA's), (Start: 22 @23884 has 197 MA's), (Start: 27 @23905 has 8 MA's),
(Start: 28 @23911 has 3 MA's), (43, 24037), (50, 24082),

Gene: Matzah_42 Start: 31568, Stop: 31993, Start Num: 8

Candidate Starts for Matzah_42:

(Start: 8 @31568 has 3 MA's), (Start: 11 @31580 has 3 MA's), (46, 31805), (55, 31859),

Gene: Mbo4_21 Start: 19372, Stop: 19725, Start Num: 20

Candidate Starts for Mbo4_21:

(20, 19372),

Gene: McGuire_31 Start: 23754, Stop: 24101, Start Num: 22

Candidate Starts for McGuire_31:

(Start: 6 @23664 has 3 MA's), (Start: 22 @23754 has 197 MA's), (Start: 27 @23775 has 8 MA's),
(Start: 28 @23781 has 3 MA's), (43, 23907), (50, 23952),

Gene: McSinger_31 Start: 24146, Stop: 24493, Start Num: 22

Candidate Starts for McSinger_31:

(Start: 6 @24056 has 3 MA's), (Start: 22 @24146 has 197 MA's), (Start: 27 @24167 has 8 MA's),
(Start: 28 @24173 has 3 MA's), (43, 24299), (50, 24344),

Gene: Megan_39 Start: 32143, Stop: 32565, Start Num: 11

Candidate Starts for Megan_39:

(3, 32056), (Start: 11 @32143 has 3 MA's), (17, 32164), (Start: 19 @32182 has 1 MA's), (37, 32281),
(44, 32356), (46, 32371), (62, 32500),

Gene: MementoMori_42 Start: 31316, Stop: 31741, Start Num: 8

Candidate Starts for MementoMori_42:

(Start: 8 @31316 has 3 MA's), (Start: 11 @31328 has 3 MA's), (46, 31553), (55, 31607),

Gene: Merry_ Start: 32911, Stop: 33336, Start Num: 11

Candidate Starts for Merry_:

(Start: 11 @32911 has 3 MA's), (Start: 19 @32953 has 1 MA's), (46, 33142), (66, 33319),

Gene: MetalQZJ_30 Start: 23884, Stop: 24231, Start Num: 22

Candidate Starts for MetalQZJ_30:

(Start: 6 @23794 has 3 MA's), (Start: 22 @23884 has 197 MA's), (Start: 27 @23905 has 8 MA's),
(Start: 28 @23911 has 3 MA's), (43, 24037), (50, 24082),

Gene: Metamorphoo_46 Start: 32129, Stop: 32551, Start Num: 9

Candidate Starts for Metamorphoo_46:

(Start: 9 @32129 has 45 MA's), (Start: 10 @32132 has 1 MA's), (Start: 19 @32174 has 1 MA's), (46,
32363), (49, 32384), (53, 32405),

Gene: Michley_30 Start: 23635, Stop: 23928, Start Num: 23

Candidate Starts for Michley_30:

(Start: 6 @23539 has 3 MA's), (Start: 22 @23629 has 197 MA's), (Start: 23 @23635 has 9 MA's), (33,
23686), (38, 23713), (43, 23776), (45, 23785), (47, 23794), (59, 23857),

Gene: MilleFeuille_27 Start: 23569, Stop: 23916, Start Num: 22

Candidate Starts for MilleFeuille_27:

(Start: 6 @23479 has 3 MA's), (Start: 22 @23569 has 197 MA's), (Start: 27 @23590 has 8 MA's),
(Start: 28 @23596 has 3 MA's), (43, 23722), (50, 23767),

Gene: Mkhuseleli_31 Start: 23779, Stop: 24126, Start Num: 22

Candidate Starts for Mkhuseleli_31:

(Start: 6 @23689 has 3 MA's), (Start: 22 @23779 has 197 MA's), (Start: 27 @23800 has 8 MA's),
(Start: 28 @23806 has 3 MA's), (43, 23932), (50, 23977),

Gene: Molly_31 Start: 23552, Stop: 23899, Start Num: 22

Candidate Starts for Molly_31:

(Start: 6 @23462 has 3 MA's), (Start: 22 @23552 has 197 MA's), (Start: 27 @23573 has 8 MA's),
(Start: 28 @23579 has 3 MA's), (43, 23705), (50, 23750),

Gene: Monet_32 Start: 24980, Stop: 25327, Start Num: 22

Candidate Starts for Monet_32:

(Start: 6 @24890 has 3 MA's), (Start: 22 @24980 has 197 MA's), (Start: 27 @25001 has 8 MA's),
(Start: 28 @25007 has 3 MA's), (43, 25133), (50, 25178),

Gene: Moose_30 Start: 23956, Stop: 24303, Start Num: 22

Candidate Starts for Moose_30:

(Start: 6 @23866 has 3 MA's), (Start: 22 @23956 has 197 MA's), (Start: 27 @23977 has 8 MA's),
(Start: 28 @23983 has 3 MA's), (43, 24109), (50, 24154),

Gene: MrGordo_30 Start: 23444, Stop: 23791, Start Num: 22

Candidate Starts for MrGordo_30:

(Start: 6 @23354 has 3 MA's), (Start: 22 @23444 has 197 MA's), (Start: 27 @23465 has 8 MA's),
(Start: 28 @23471 has 3 MA's), (43, 23597), (50, 23642),

Gene: Mryolo_29 Start: 23481, Stop: 23828, Start Num: 22

Candidate Starts for Mryolo_29:

(Start: 6 @23391 has 3 MA's), (Start: 22 @23481 has 197 MA's), (Start: 27 @23502 has 8 MA's),
(Start: 28 @23508 has 3 MA's), (43, 23634), (50, 23679),

Gene: Mule_30 Start: 23790, Stop: 24137, Start Num: 22

Candidate Starts for Mule_30:

(Start: 6 @23700 has 3 MA's), (Start: 22 @23790 has 197 MA's), (Start: 27 @23811 has 8 MA's),
(Start: 28 @23817 has 3 MA's), (43, 23943), (50, 23988),

Gene: Museum_32 Start: 23800, Stop: 24147, Start Num: 22

Candidate Starts for Museum_32:

(Start: 6 @23710 has 3 MA's), (Start: 22 @23800 has 197 MA's), (Start: 27 @23821 has 8 MA's),
(Start: 28 @23827 has 3 MA's), (43, 23953), (50, 23998),

Gene: NEHalo_30 Start: 23538, Stop: 23885, Start Num: 22

Candidate Starts for NEHalo_30:

(Start: 6 @23448 has 3 MA's), (Start: 22 @23538 has 197 MA's), (Start: 27 @23559 has 8 MA's),
(Start: 28 @23565 has 3 MA's), (43, 23691), (50, 23736),

Gene: Naiad_26 Start: 18760, Stop: 19080, Start Num: 24

Candidate Starts for Naiad_26:

(Start: 24 @18760 has 33 MA's), (Start: 29 @18787 has 3 MA's), (39, 18844), (40, 18874), (43, 18907),
(51, 18958), (59, 19009),

Gene: Naira_31 Start: 25397, Stop: 25744, Start Num: 22

Candidate Starts for Naira_31:

(Start: 6 @25307 has 3 MA's), (Start: 22 @25397 has 197 MA's), (Start: 27 @25418 has 8 MA's),
(Start: 28 @25424 has 3 MA's), (43, 25550), (50, 25595),

Gene: Nancinator_26 Start: 18760, Stop: 19080, Start Num: 24

Candidate Starts for Nancinator_26:

(Start: 24 @18760 has 33 MA's), (Start: 29 @18787 has 3 MA's), (39, 18844), (40, 18874), (43, 18907),
(51, 18958), (59, 19009),

Gene: Natosaleda_26 Start: 18760, Stop: 19080, Start Num: 24
Candidate Starts for Natosaleda_26:
(Start: 24 @18760 has 33 MA's), (Start: 29 @18787 has 3 MA's), (39, 18844), (40, 18874), (43, 18907),
(51, 18958), (59, 19009),

Gene: Nerujay_31 Start: 24206, Stop: 24553, Start Num: 22
Candidate Starts for Nerujay_31:
(Start: 6 @24116 has 3 MA's), (Start: 22 @24206 has 197 MA's), (Start: 27 @24227 has 8 MA's),
(Start: 28 @24233 has 3 MA's), (43, 24359), (50, 24404),

Gene: Nhonho_30 Start: 23957, Stop: 24304, Start Num: 22
Candidate Starts for Nhonho_30:
(Start: 6 @23867 has 3 MA's), (Start: 22 @23957 has 197 MA's), (Start: 27 @23978 has 8 MA's),
(Start: 28 @23984 has 3 MA's), (43, 24110), (50, 24155),

Gene: Nicole72_40 Start: 32990, Stop: 33412, Start Num: 12
Candidate Starts for Nicole72_40:
(3, 32900), (Start: 10 @32984 has 1 MA's), (Start: 11 @32987 has 3 MA's), (Start: 12 @32990 has 1
MA's), (Start: 19 @33029 has 1 MA's), (44, 33203), (46, 33218), (53, 33260), (62, 33347),

Gene: Niza_32 Start: 24834, Stop: 25181, Start Num: 22
Candidate Starts for Niza_32:
(Start: 6 @24744 has 3 MA's), (Start: 22 @24834 has 197 MA's), (Start: 27 @24855 has 8 MA's),
(Start: 28 @24861 has 3 MA's), (43, 24987), (50, 25032),

Gene: NoodlelyBoi_45 Start: 31666, Stop: 32091, Start Num: 9
Candidate Starts for NoodlelyBoi_45:
(Start: 9 @31666 has 45 MA's), (Start: 12 @31675 has 1 MA's), (Start: 19 @31714 has 1 MA's), (44,
31888), (46, 31903), (51, 31936), (53, 31945), (58, 31990),

Gene: Norz_32 Start: 24613, Stop: 24960, Start Num: 22
Candidate Starts for Norz_32:
(Start: 6 @24523 has 3 MA's), (Start: 22 @24613 has 197 MA's), (Start: 27 @24634 has 8 MA's),
(Start: 28 @24640 has 3 MA's), (43, 24766), (50, 24811),

Gene: Noxious_32 Start: 25269, Stop: 25589, Start Num: 28
Candidate Starts for Noxious_32:
(Start: 6 @25152 has 3 MA's), (Start: 22 @25242 has 197 MA's), (Start: 27 @25263 has 8 MA's),
(Start: 28 @25269 has 3 MA's), (43, 25395), (50, 25440),

Gene: Ohno789_30 Start: 23599, Stop: 23946, Start Num: 22
Candidate Starts for Ohno789_30:
(Start: 6 @23509 has 3 MA's), (Start: 22 @23599 has 197 MA's), (Start: 27 @23620 has 8 MA's),
(Start: 28 @23626 has 3 MA's), (43, 23752), (50, 23797),

Gene: Onika_44 Start: 31346, Stop: 31768, Start Num: 9
Candidate Starts for Onika_44:
(Start: 9 @31346 has 45 MA's), (Start: 12 @31355 has 1 MA's), (Start: 19 @31391 has 1 MA's), (44,
31565), (46, 31580), (51, 31613), (53, 31622), (54, 31628), (58, 31667), (65, 31730),

Gene: Oogway_29 Start: 23721, Stop: 24068, Start Num: 22
Candidate Starts for Oogway_29:

(Start: 6 @23631 has 3 MA's), (Start: 22 @23721 has 197 MA's), (Start: 27 @23742 has 8 MA's),
(Start: 28 @23748 has 3 MA's), (43, 23874), (50, 23919),

Gene: PSullivan_32 Start: 24269, Stop: 24616, Start Num: 22

Candidate Starts for PSullivan_32:

(Start: 6 @24179 has 3 MA's), (Start: 22 @24269 has 197 MA's), (Start: 27 @24290 has 8 MA's),
(Start: 28 @24296 has 3 MA's), (43, 24422), (50, 24467),

Gene: PacerPaul_30 Start: 24000, Stop: 24299, Start Num: 22

Candidate Starts for PacerPaul_30:

(Start: 6 @23910 has 3 MA's), (Start: 22 @24000 has 197 MA's), (Start: 23 @24006 has 9 MA's), (34,
24069), (38, 24084), (43, 24147), (47, 24165), (59, 24228),

Gene: Papez_32 Start: 25437, Stop: 25784, Start Num: 22

Candidate Starts for Papez_32:

(Start: 6 @25347 has 3 MA's), (Start: 22 @25437 has 197 MA's), (Start: 27 @25458 has 8 MA's),
(Start: 28 @25464 has 3 MA's), (43, 25590), (50, 25635),

Gene: Paphu_29 Start: 23513, Stop: 23812, Start Num: 22

Candidate Starts for Paphu_29:

(Start: 6 @23423 has 3 MA's), (Start: 22 @23513 has 197 MA's), (Start: 23 @23519 has 9 MA's), (34,
23582), (38, 23597), (43, 23660), (47, 23678), (59, 23741),

Gene: Paraselene_29 Start: 23941, Stop: 24288, Start Num: 22

Candidate Starts for Paraselene_29:

(Start: 6 @23851 has 3 MA's), (Start: 22 @23941 has 197 MA's), (Start: 27 @23962 has 8 MA's),
(Start: 28 @23968 has 3 MA's), (43, 24094), (50, 24139),

Gene: Pari_31 Start: 23473, Stop: 23820, Start Num: 22

Candidate Starts for Pari_31:

(Start: 6 @23383 has 3 MA's), (Start: 22 @23473 has 197 MA's), (Start: 27 @23494 has 8 MA's),
(Start: 28 @23500 has 3 MA's), (43, 23626), (50, 23671),

Gene: Parliament_29 Start: 23808, Stop: 24155, Start Num: 22

Candidate Starts for Parliament_29:

(Start: 6 @23718 has 3 MA's), (Start: 22 @23808 has 197 MA's), (Start: 27 @23829 has 8 MA's),
(Start: 28 @23835 has 3 MA's), (43, 23961), (50, 24006),

Gene: Partridge_26 Start: 18793, Stop: 19113, Start Num: 24

Candidate Starts for Partridge_26:

(Start: 24 @18793 has 33 MA's), (Start: 29 @18820 has 3 MA's), (40, 18907), (43, 18940), (51, 18991),
(59, 19042),

Gene: PascalRango_31 Start: 23776, Stop: 24123, Start Num: 22

Candidate Starts for PascalRango_31:

(Start: 6 @23686 has 3 MA's), (Start: 22 @23776 has 197 MA's), (Start: 27 @23797 has 8 MA's),
(Start: 28 @23803 has 3 MA's), (43, 23929), (50, 23974),

Gene: Paschalis_44 Start: 31353, Stop: 31775, Start Num: 9

Candidate Starts for Paschalis_44:

(5, 31326), (Start: 9 @31353 has 45 MA's), (Start: 12 @31362 has 1 MA's), (13, 31368), (Start: 19
@31398 has 1 MA's), (44, 31572), (46, 31587), (51, 31620), (53, 31629), (54, 31635), (65, 31737),

Gene: PattyP_32 Start: 24009, Stop: 24356, Start Num: 22

Candidate Starts for PattyP_32:

(Start: 6 @23919 has 3 MA's), (Start: 22 @24009 has 197 MA's), (Start: 27 @24030 has 8 MA's),
(Start: 28 @24036 has 3 MA's), (43, 24162), (50, 24207),

Gene: Payneful_30 Start: 23257, Stop: 23604, Start Num: 22

Candidate Starts for Payneful_30:

(Start: 6 @23167 has 3 MA's), (Start: 22 @23257 has 197 MA's), (Start: 27 @23278 has 8 MA's),
(Start: 28 @23284 has 3 MA's), (43, 23410), (50, 23455),

Gene: Pelly_31 Start: 24428, Stop: 24775, Start Num: 22

Candidate Starts for Pelly_31:

(Start: 6 @24338 has 3 MA's), (Start: 22 @24428 has 197 MA's), (Start: 27 @24449 has 8 MA's),
(Start: 28 @24455 has 3 MA's), (43, 24581), (50, 24626),

Gene: Pepe_31 Start: 24610, Stop: 24957, Start Num: 22

Candidate Starts for Pepe_31:

(Start: 6 @24520 has 3 MA's), (Start: 22 @24610 has 197 MA's), (Start: 27 @24631 has 8 MA's),
(Start: 28 @24637 has 3 MA's), (43, 24763), (50, 24808),

Gene: Perseus_32 Start: 24652, Stop: 24972, Start Num: 28

Candidate Starts for Perseus_32:

(Start: 6 @24535 has 3 MA's), (Start: 22 @24625 has 197 MA's), (Start: 27 @24646 has 8 MA's),
(Start: 28 @24652 has 3 MA's), (43, 24778), (50, 24823),

Gene: Peterson_33 Start: 25638, Stop: 25985, Start Num: 22

Candidate Starts for Peterson_33:

(Start: 6 @25548 has 3 MA's), (Start: 22 @25638 has 197 MA's), (Start: 27 @25659 has 8 MA's), (43,
25791), (50, 25836),

Gene: Petp2012_32 Start: 24680, Stop: 25027, Start Num: 22

Candidate Starts for Petp2012_32:

(Start: 6 @24590 has 3 MA's), (Start: 22 @24680 has 197 MA's), (Start: 27 @24701 has 8 MA's),
(Start: 28 @24707 has 3 MA's), (43, 24833), (50, 24878),

Gene: Petruccio_31 Start: 24138, Stop: 24485, Start Num: 22

Candidate Starts for Petruccio_31:

(Start: 6 @24048 has 3 MA's), (Start: 22 @24138 has 197 MA's), (Start: 27 @24159 has 8 MA's),
(Start: 28 @24165 has 3 MA's), (43, 24291), (50, 24336),

Gene: PhailMary_25 Start: 19082, Stop: 19402, Start Num: 24

Candidate Starts for PhailMary_25:

(Start: 24 @19082 has 33 MA's), (Start: 29 @19109 has 3 MA's), (39, 19166), (40, 19196), (43, 19229),
(51, 19280), (57, 19313), (59, 19331),

Gene: PhedwardCullen_43 Start: 31104, Stop: 31526, Start Num: 9

Candidate Starts for PhedwardCullen_43:

(Start: 9 @31104 has 45 MA's), (Start: 12 @31113 has 1 MA's), (Start: 19 @31149 has 1 MA's), (44,
31323), (46, 31338), (51, 31371), (53, 31380), (54, 31386), (58, 31425), (65, 31488),

Gene: PherrisBueller_31 Start: 23593, Stop: 23940, Start Num: 22

Candidate Starts for PherrisBueller_31:

(Start: 6 @23503 has 3 MA's), (Start: 22 @23593 has 197 MA's), (Start: 27 @23614 has 8 MA's),
(Start: 28 @23620 has 3 MA's), (43, 23746), (50, 23791),

Gene: Phillis_27 Start: 21206, Stop: 21565, Start Num: 22

Candidate Starts for Phillis_27:

(18, 21173), (Start: 22 @21206 has 197 MA's), (31, 21254), (45, 21380), (49, 21410), (59, 21494),

Gene: PhineBark_29 Start: 24484, Stop: 24831, Start Num: 22

Candidate Starts for PhineBark_29:

(Start: 6 @24394 has 3 MA's), (Start: 22 @24484 has 197 MA's), (Start: 27 @24505 has 8 MA's),
(Start: 28 @24511 has 3 MA's), (43, 24637), (50, 24682),

Gene: Phlippers_29 Start: 24809, Stop: 25156, Start Num: 22

Candidate Starts for Phlippers_29:

(Start: 6 @24719 has 3 MA's), (Start: 22 @24809 has 197 MA's), (Start: 27 @24830 has 8 MA's),
(Start: 28 @24836 has 3 MA's), (43, 24962), (50, 25007),

Gene: Phorgeous_44 Start: 31216, Stop: 31638, Start Num: 9

Candidate Starts for Phorgeous_44:

(Start: 9 @31216 has 45 MA's), (Start: 12 @31225 has 1 MA's), (Start: 19 @31261 has 1 MA's), (44,
31435), (46, 31450), (51, 31483), (53, 31492), (54, 31498), (58, 31537), (65, 31600),

Gene: Phrancesco_45 Start: 31506, Stop: 31928, Start Num: 9

Candidate Starts for Phrancesco_45:

(Start: 9 @31506 has 45 MA's), (Start: 12 @31515 has 1 MA's), (Start: 19 @31551 has 1 MA's), (44,
31725), (46, 31740), (51, 31773), (53, 31782), (54, 31788), (58, 31827), (65, 31890),

Gene: Phrankenstein_26 Start: 18760, Stop: 19080, Start Num: 24

Candidate Starts for Phrankenstein_26:

(Start: 24 @18760 has 33 MA's), (Start: 29 @18787 has 3 MA's), (39, 18844), (40, 18874), (43, 18907),
(51, 18958), (59, 19009),

Gene: PhrostyMug_30 Start: 23787, Stop: 24134, Start Num: 22

Candidate Starts for PhrostyMug_30:

(Start: 6 @23697 has 3 MA's), (Start: 22 @23787 has 197 MA's), (Start: 27 @23808 has 8 MA's),
(Start: 28 @23814 has 3 MA's), (43, 23940), (50, 23985),

Gene: PierreOrion_45 Start: 31520, Stop: 31942, Start Num: 9

Candidate Starts for PierreOrion_45:

(Start: 9 @31520 has 45 MA's), (Start: 12 @31529 has 1 MA's), (Start: 19 @31565 has 1 MA's), (44,
31739), (46, 31754), (51, 31787), (53, 31796), (54, 31802), (58, 31841), (65, 31904),

Gene: PinkPlastic_29 Start: 23527, Stop: 23874, Start Num: 22

Candidate Starts for PinkPlastic_29:

(Start: 6 @23437 has 3 MA's), (Start: 22 @23527 has 197 MA's), (Start: 27 @23548 has 8 MA's),
(Start: 28 @23554 has 3 MA's), (43, 23680), (50, 23725),

Gene: Pinto_33 Start: 24340, Stop: 24687, Start Num: 22

Candidate Starts for Pinto_33:

(Start: 6 @24250 has 3 MA's), (Start: 22 @24340 has 197 MA's), (Start: 27 @24361 has 8 MA's),
(Start: 28 @24367 has 3 MA's), (43, 24493), (50, 24538),

Gene: PiperSansNom_45 Start: 31660, Stop: 32082, Start Num: 9

Candidate Starts for PiperSansNom_45:

(Start: 9 @31660 has 45 MA's), (Start: 12 @31669 has 1 MA's), (Start: 19 @31705 has 1 MA's), (44, 31879), (46, 31894), (51, 31927), (53, 31936), (54, 31942), (58, 31981), (65, 32044),

Gene: Piperis_45 Start: 31339, Stop: 31761, Start Num: 9

Candidate Starts for Piperis_45:

(Start: 9 @31339 has 45 MA's), (Start: 12 @31348 has 1 MA's), (Start: 19 @31384 has 1 MA's), (44, 31558), (46, 31573), (51, 31606), (53, 31615), (54, 31621), (58, 31660),

Gene: Pippin_32 Start: 24091, Stop: 24438, Start Num: 22

Candidate Starts for Pippin_32:

(Start: 6 @24001 has 3 MA's), (Start: 22 @24091 has 197 MA's), (Start: 27 @24112 has 8 MA's), (Start: 28 @24118 has 3 MA's), (43, 24244), (50, 24289),

Gene: Pita2_32 Start: 24269, Stop: 24616, Start Num: 22

Candidate Starts for Pita2_32:

(Start: 6 @24179 has 3 MA's), (Start: 22 @24269 has 197 MA's), (Start: 27 @24290 has 8 MA's), (Start: 28 @24296 has 3 MA's), (43, 24422), (50, 24467),

Gene: PowerRanger_32 Start: 25244, Stop: 25591, Start Num: 22

Candidate Starts for PowerRanger_32:

(Start: 6 @25154 has 3 MA's), (Start: 22 @25244 has 197 MA's), (Start: 27 @25265 has 8 MA's), (Start: 28 @25271 has 3 MA's), (43, 25397), (50, 25442),

Gene: ProMouse_29 Start: 24232, Stop: 24579, Start Num: 22

Candidate Starts for ProMouse_29:

(Start: 6 @24142 has 3 MA's), (Start: 22 @24232 has 197 MA's), (Start: 27 @24253 has 8 MA's), (Start: 28 @24259 has 3 MA's), (43, 24385), (50, 24430),

Gene: Pulchra_46 Start: 31736, Stop: 32158, Start Num: 9

Candidate Starts for Pulchra_46:

(Start: 9 @31736 has 45 MA's), (Start: 12 @31745 has 1 MA's), (Start: 19 @31781 has 1 MA's), (44, 31955), (46, 31970), (51, 32003), (53, 32012), (54, 32018), (58, 32057), (65, 32120),

Gene: Puppet_30 Start: 23791, Stop: 24138, Start Num: 22

Candidate Starts for Puppet_30:

(Start: 6 @23701 has 3 MA's), (Start: 22 @23791 has 197 MA's), (Start: 27 @23812 has 8 MA's), (Start: 28 @23818 has 3 MA's), (43, 23944), (50, 23989),

Gene: QTRlifeCrisis_30 Start: 24347, Stop: 24694, Start Num: 22

Candidate Starts for QTRlifeCrisis_30:

(Start: 6 @24257 has 3 MA's), (Start: 22 @24347 has 197 MA's), (Start: 27 @24368 has 8 MA's), (Start: 28 @24374 has 3 MA's), (43, 24500), (50, 24545),

Gene: Quhwah_48 Start: 31968, Stop: 32390, Start Num: 9

Candidate Starts for Quhwah_48:

(Start: 9 @31968 has 45 MA's), (Start: 12 @31977 has 1 MA's), (Start: 19 @32013 has 1 MA's), (44, 32187), (46, 32202), (51, 32235), (53, 32244), (54, 32250), (65, 32352),

Gene: REQ3_55 Start: 35929, Stop: 36294, Start Num: 21

Candidate Starts for REQ3_55:

(Start: 21 @35929 has 1 MA's), (30, 35974), (35, 36007), (42, 36091), (56, 36184), (64, 36250),

Gene: RER2_19 Start: 15659, Stop: 15952, Start Num: 29

Candidate Starts for RER2_19:

(Start: 24 @15632 has 33 MA's), (Start: 29 @15659 has 3 MA's), (39, 15716), (40, 15746), (43, 15779), (51, 15830), (59, 15881),

Gene: RGL3_19 Start: 15780, Stop: 16100, Start Num: 24

Candidate Starts for RGL3_19:

(Start: 24 @15780 has 33 MA's), (33, 15828), (40, 15894), (43, 15927), (46, 15945), (57, 16011), (59, 16029),

Gene: Raid_30 Start: 23796, Stop: 24143, Start Num: 22

Candidate Starts for Raid_30:

(Start: 6 @23706 has 3 MA's), (Start: 22 @23796 has 197 MA's), (Start: 27 @23817 has 8 MA's), (Start: 28 @23823 has 3 MA's), (43, 23949), (50, 23994),

Gene: Rajelicia_30 Start: 23506, Stop: 23853, Start Num: 22

Candidate Starts for Rajelicia_30:

(Start: 6 @23416 has 3 MA's), (Start: 22 @23506 has 197 MA's), (Start: 27 @23527 has 8 MA's), (Start: 28 @23533 has 3 MA's), (43, 23659), (50, 23704),

Gene: Ramiel05_44 Start: 31371, Stop: 31793, Start Num: 9

Candidate Starts for Ramiel05_44:

(4, 31323), (Start: 9 @31371 has 45 MA's), (Start: 12 @31380 has 1 MA's), (Start: 19 @31416 has 1 MA's), (44, 31590), (46, 31605), (51, 31638), (53, 31647), (54, 31653), (58, 31692), (65, 31755),

Gene: Rasputin_26 Start: 18728, Stop: 19048, Start Num: 24

Candidate Starts for Rasputin_26:

(Start: 24 @18728 has 33 MA's), (Start: 29 @18755 has 3 MA's), (39, 18812), (40, 18842), (43, 18875), (51, 18926), (57, 18959), (59, 18977),

Gene: RexFury_26 Start: 18818, Stop: 19111, Start Num: 29

Candidate Starts for RexFury_26:

(Start: 24 @18791 has 33 MA's), (Start: 29 @18818 has 3 MA's), (39, 18875), (40, 18905), (43, 18938), (51, 18989), (59, 19040),

Gene: Rhodalysa_26 Start: 18760, Stop: 19080, Start Num: 24

Candidate Starts for Rhodalysa_26:

(Start: 24 @18760 has 33 MA's), (Start: 29 @18787 has 3 MA's), (39, 18844), (40, 18874), (43, 18907), (51, 18958), (59, 19009),

Gene: Rhynn_30 Start: 23796, Stop: 24143, Start Num: 22

Candidate Starts for Rhynn_30:

(Start: 6 @23706 has 3 MA's), (Start: 22 @23796 has 197 MA's), (Start: 27 @23817 has 8 MA's), (Start: 28 @23823 has 3 MA's), (43, 23949), (50, 23994),

Gene: RidgeCB_30 Start: 23571, Stop: 23870, Start Num: 22

Candidate Starts for RidgeCB_30:

(Start: 6 @23481 has 3 MA's), (Start: 22 @23571 has 197 MA's), (Start: 23 @23577 has 9 MA's), (34, 23640), (38, 23655), (43, 23718), (47, 23736), (59, 23799),

Gene: Ringer_30 Start: 24448, Stop: 24795, Start Num: 22

Candidate Starts for Ringer_30:

(Start: 6 @24358 has 3 MA's), (Start: 22 @24448 has 197 MA's), (Start: 27 @24469 has 8 MA's),
(Start: 28 @24475 has 3 MA's), (43, 24601), (50, 24646),

Gene: RobsFeet_47 Start: 32413, Stop: 32832, Start Num: 10

Candidate Starts for RobsFeet_47:

(Start: 9 @32410 has 45 MA's), (Start: 10 @32413 has 1 MA's), (Start: 19 @32455 has 1 MA's), (46,
32644), (49, 32665),

Gene: Rockwell_44 Start: 31371, Stop: 31793, Start Num: 9

Candidate Starts for Rockwell_44:

(Start: 9 @31371 has 45 MA's), (Start: 12 @31380 has 1 MA's), (Start: 19 @31416 has 1 MA's), (44,
31590), (46, 31605), (51, 31638), (53, 31647), (54, 31653), (58, 31692), (65, 31755),

Gene: Rohr_31 Start: 23993, Stop: 24292, Start Num: 22

Candidate Starts for Rohr_31:

(Start: 6 @23903 has 3 MA's), (Start: 22 @23993 has 197 MA's), (Start: 23 @23999 has 9 MA's), (34,
24062), (38, 24077), (43, 24140), (47, 24158), (59, 24221),

Gene: Rubeus_31 Start: 23831, Stop: 24178, Start Num: 22

Candidate Starts for Rubeus_31:

(Start: 6 @23741 has 3 MA's), (Start: 22 @23831 has 197 MA's), (Start: 27 @23852 has 8 MA's),
(Start: 28 @23858 has 3 MA's), (43, 23984), (50, 24029),

Gene: Rufus_31 Start: 24133, Stop: 24480, Start Num: 22

Candidate Starts for Rufus_31:

(Start: 6 @24043 has 3 MA's), (Start: 22 @24133 has 197 MA's), (Start: 27 @24154 has 8 MA's),
(Start: 28 @24160 has 3 MA's), (43, 24286), (50, 24331),

Gene: Ruotula_29 Start: 24337, Stop: 24684, Start Num: 22

Candidate Starts for Ruotula_29:

(Start: 6 @24247 has 3 MA's), (Start: 22 @24337 has 197 MA's), (Start: 27 @24358 has 8 MA's),
(Start: 28 @24364 has 3 MA's), (43, 24490), (50, 24535),

Gene: Rutherferd_32 Start: 24423, Stop: 24749, Start Num: 27

Candidate Starts for Rutherferd_32:

(Start: 6 @24312 has 3 MA's), (Start: 22 @24402 has 197 MA's), (Start: 27 @24423 has 8 MA's),
(Start: 28 @24429 has 3 MA's), (43, 24555), (50, 24600),

Gene: STLscum_31 Start: 24540, Stop: 24887, Start Num: 22

Candidate Starts for STLscum_31:

(Start: 6 @24450 has 3 MA's), (Start: 22 @24540 has 197 MA's), (Start: 27 @24561 has 8 MA's),
(Start: 28 @24567 has 3 MA's), (43, 24693), (50, 24738),

Gene: Sagefire_31 Start: 24573, Stop: 24920, Start Num: 22

Candidate Starts for Sagefire_31:

(Start: 6 @24483 has 3 MA's), (Start: 22 @24573 has 197 MA's), (Start: 27 @24594 has 8 MA's),
(Start: 28 @24600 has 3 MA's), (43, 24726), (50, 24771),

Gene: Sandaddy_29 Start: 23686, Stop: 24033, Start Num: 22

Candidate Starts for Sandaddy_29:

(Start: 6 @23596 has 3 MA's), (Start: 22 @23686 has 197 MA's), (Start: 27 @23707 has 8 MA's),
(Start: 28 @23713 has 3 MA's), (43, 23839), (50, 23884),

Gene: Sanya_29 Start: 24370, Stop: 24717, Start Num: 22

Candidate Starts for Sanya_29:

(Start: 6 @24280 has 3 MA's), (Start: 22 @24370 has 197 MA's), (Start: 27 @24391 has 8 MA's),
(Start: 28 @24397 has 3 MA's), (43, 24523), (50, 24568),

Gene: SarFire_30 Start: 23758, Stop: 24195, Start Num: 6

Candidate Starts for SarFire_30:

(Start: 6 @23758 has 3 MA's), (Start: 22 @23848 has 197 MA's), (Start: 27 @23869 has 8 MA's),
(Start: 28 @23875 has 3 MA's), (43, 24001), (50, 24046),

Gene: Savannah_44 Start: 31398, Stop: 31820, Start Num: 9

Candidate Starts for Savannah_44:

(Start: 9 @31398 has 45 MA's), (Start: 12 @31407 has 1 MA's), (Start: 19 @31443 has 1 MA's), (44,
31617), (46, 31632), (51, 31665), (53, 31674), (54, 31680), (58, 31719), (65, 31782),

Gene: Scowl_31 Start: 24430, Stop: 24777, Start Num: 22

Candidate Starts for Scowl_31:

(Start: 6 @24340 has 3 MA's), (Start: 22 @24430 has 197 MA's), (Start: 27 @24451 has 8 MA's),
(Start: 28 @24457 has 3 MA's), (43, 24583), (50, 24628),

Gene: Scumberland_46 Start: 31593, Stop: 32015, Start Num: 9

Candidate Starts for Scumberland_46:

(Start: 9 @31593 has 45 MA's), (Start: 12 @31602 has 1 MA's), (Start: 19 @31638 has 1 MA's), (44,
31812), (46, 31827), (51, 31860), (53, 31869), (54, 31875), (58, 31914), (65, 31977),

Gene: Seabiscuit_32 Start: 23754, Stop: 24101, Start Num: 22

Candidate Starts for Seabiscuit_32:

(Start: 6 @23664 has 3 MA's), (Start: 22 @23754 has 197 MA's), (Start: 27 @23775 has 8 MA's), (43,
23907), (50, 23952),

Gene: Seanderson_31 Start: 24228, Stop: 24575, Start Num: 22

Candidate Starts for Seanderson_31:

(Start: 6 @24138 has 3 MA's), (Start: 22 @24228 has 197 MA's), (Start: 27 @24249 has 8 MA's),
(Start: 28 @24255 has 3 MA's), (43, 24381), (50, 24426),

Gene: Selwyn23_46 Start: 31570, Stop: 31992, Start Num: 9

Candidate Starts for Selwyn23_46:

(Start: 9 @31570 has 45 MA's), (Start: 12 @31579 has 1 MA's), (Start: 19 @31615 has 1 MA's), (44,
31789), (46, 31804), (51, 31837), (53, 31846), (54, 31852), (58, 31891), (65, 31954),

Gene: ShortQueendom_29 Start: 23689, Stop: 24015, Start Num: 27

Candidate Starts for ShortQueendom_29:

(Start: 6 @23578 has 3 MA's), (Start: 22 @23668 has 197 MA's), (Start: 27 @23689 has 8 MA's),
(Start: 28 @23695 has 3 MA's), (43, 23821), (50, 23866),

Gene: Shotgun_44 Start: 31197, Stop: 31619, Start Num: 9

Candidate Starts for Shotgun_44:

(Start: 9 @31197 has 45 MA's), (Start: 12 @31206 has 1 MA's), (Start: 19 @31242 has 1 MA's), (44,
31416), (46, 31431), (51, 31464), (53, 31473), (54, 31479), (58, 31518), (65, 31581),

Gene: Shrubaron_46 Start: 32044, Stop: 32466, Start Num: 9

Candidate Starts for Shrubaron_46:

(3, 31966), (Start: 9 @32044 has 45 MA's), (Start: 10 @32047 has 1 MA's), (Start: 19 @32089 has 1 MA's), (46, 32278), (49, 32299),

Gene: Shuman_26 Start: 18760, Stop: 19080, Start Num: 24

Candidate Starts for Shuman_26:

(Start: 24 @18760 has 33 MA's), (Start: 29 @18787 has 3 MA's), (39, 18844), (40, 18874), (43, 18907), (51, 18958), (59, 19009),

Gene: Sibs6_32 Start: 24313, Stop: 24660, Start Num: 22

Candidate Starts for Sibs6_32:

(Start: 6 @24223 has 3 MA's), (Start: 22 @24313 has 197 MA's), (Start: 27 @24334 has 8 MA's), (Start: 28 @24340 has 3 MA's), (43, 24466), (50, 24511),

Gene: SirFrank_44 Start: 31239, Stop: 31661, Start Num: 9

Candidate Starts for SirFrank_44:

(Start: 9 @31239 has 45 MA's), (Start: 12 @31248 has 1 MA's), (Start: 19 @31284 has 1 MA's), (44, 31458), (46, 31473), (51, 31506), (53, 31515), (54, 31521), (58, 31560), (65, 31623),

Gene: SkiPole_32 Start: 24052, Stop: 24399, Start Num: 22

Candidate Starts for SkiPole_32:

(Start: 6 @23962 has 3 MA's), (Start: 22 @24052 has 197 MA's), (Start: 27 @24073 has 8 MA's), (Start: 28 @24079 has 3 MA's), (43, 24205), (50, 24250),

Gene: Skugga_43 Start: 31010, Stop: 31438, Start Num: 9

Candidate Starts for Skugga_43:

(2, 30908), (Start: 9 @31010 has 45 MA's), (Start: 12 @31019 has 1 MA's), (Start: 19 @31058 has 1 MA's), (44, 31232), (46, 31247), (53, 31289),

Gene: Slagathor_31 Start: 23713, Stop: 24060, Start Num: 22

Candidate Starts for Slagathor_31:

(Start: 6 @23623 has 3 MA's), (Start: 22 @23713 has 197 MA's), (Start: 27 @23734 has 8 MA's), (Start: 28 @23740 has 3 MA's), (43, 23866), (50, 23911),

Gene: Sleepyhead_23 Start: 20004, Stop: 20348, Start Num: 21

Candidate Starts for Sleepyhead_23:

(Start: 21 @20004 has 1 MA's), (26, 20019), (42, 20166), (60, 20274), (68, 20343),

Gene: Smairt_31 Start: 24488, Stop: 24787, Start Num: 22

Candidate Starts for Smairt_31:

(Start: 6 @24398 has 3 MA's), (Start: 22 @24488 has 197 MA's), (Start: 23 @24494 has 9 MA's), (34, 24557), (38, 24572), (43, 24635), (47, 24653), (59, 24716),

Gene: Smarties_53 Start: 33197, Stop: 33622, Start Num: 9

Candidate Starts for Smarties_53:

(2, 33095), (4, 33149), (Start: 9 @33197 has 45 MA's), (Start: 12 @33206 has 1 MA's), (14, 33215), (Start: 19 @33245 has 1 MA's), (44, 33419), (46, 33434), (51, 33467), (53, 33476), (54, 33482), (58, 33521),

Gene: Smeagol_32 Start: 25067, Stop: 25414, Start Num: 22

Candidate Starts for Smeagol_32:

(Start: 6 @24977 has 3 MA's), (Start: 22 @25067 has 197 MA's), (Start: 27 @25088 has 8 MA's), (43, 25220), (50, 25265),

Gene: Snazzy_29 Start: 23674, Stop: 23973, Start Num: 22

Candidate Starts for Snazzy_29:

(Start: 6 @23584 has 3 MA's), (Start: 22 @23674 has 197 MA's), (Start: 23 @23680 has 9 MA's), (34, 23743), (38, 23758), (43, 23821), (47, 23839), (59, 23902),

Gene: Solon_30 Start: 24339, Stop: 24686, Start Num: 22

Candidate Starts for Solon_30:

(Start: 6 @24249 has 3 MA's), (Start: 22 @24339 has 197 MA's), (Start: 27 @24360 has 8 MA's), (Start: 28 @24366 has 3 MA's), (43, 24492), (50, 24537),

Gene: Sorpresa_30 Start: 23686, Stop: 24033, Start Num: 22

Candidate Starts for Sorpresa_30:

(Start: 6 @23596 has 3 MA's), (Start: 22 @23686 has 197 MA's), (Start: 27 @23707 has 8 MA's), (Start: 28 @23713 has 3 MA's), (43, 23839), (50, 23884),

Gene: SpikeBT_32 Start: 24644, Stop: 24991, Start Num: 22

Candidate Starts for SpikeBT_32:

(Start: 6 @24554 has 3 MA's), (Start: 22 @24644 has 197 MA's), (Start: 27 @24665 has 8 MA's), (Start: 28 @24671 has 3 MA's), (43, 24797), (50, 24842),

Gene: Squee_31 Start: 24620, Stop: 24940, Start Num: 28

Candidate Starts for Squee_31:

(Start: 6 @24503 has 3 MA's), (Start: 22 @24593 has 197 MA's), (Start: 27 @24614 has 8 MA's), (Start: 28 @24620 has 3 MA's), (43, 24746), (50, 24791),

Gene: StCroix_26 Start: 18760, Stop: 19080, Start Num: 24

Candidate Starts for StCroix_26:

(Start: 24 @18760 has 33 MA's), (Start: 29 @18787 has 3 MA's), (39, 18844), (40, 18874), (43, 18907), (51, 18958), (59, 19009),

Gene: StewieG_29 Start: 23550, Stop: 23876, Start Num: 27

Candidate Starts for StewieG_29:

(Start: 6 @23439 has 3 MA's), (Start: 22 @23529 has 197 MA's), (Start: 27 @23550 has 8 MA's), (Start: 28 @23556 has 3 MA's), (43, 23682), (50, 23727),

Gene: StrongArm_29 Start: 24728, Stop: 25075, Start Num: 22

Candidate Starts for StrongArm_29:

(Start: 6 @24638 has 3 MA's), (Start: 22 @24728 has 197 MA's), (Start: 27 @24749 has 8 MA's), (Start: 28 @24755 has 3 MA's), (43, 24881), (50, 24926),

Gene: Sumter_29 Start: 23277, Stop: 23624, Start Num: 22

Candidate Starts for Sumter_29:

(Start: 6 @23187 has 3 MA's), (Start: 22 @23277 has 197 MA's), (Start: 27 @23298 has 8 MA's), (Start: 28 @23304 has 3 MA's), (43, 23430), (50, 23475),

Gene: Sunny_ Start: 32913, Stop: 33338, Start Num: 11

Candidate Starts for Sunny_:

(Start: 11 @32913 has 3 MA's), (Start: 19 @32955 has 1 MA's), (46, 33144), (66, 33321),

Gene: Sunshine924_31 Start: 23558, Stop: 23905, Start Num: 22

Candidate Starts for Sunshine924_31:

(Start: 6 @23468 has 3 MA's), (Start: 22 @23558 has 197 MA's), (Start: 27 @23579 has 8 MA's), (Start: 28 @23585 has 3 MA's), (43, 23711), (50, 23756),

Gene: Swann_26 Start: 18760, Stop: 19080, Start Num: 24

Candidate Starts for Swann_26:

(Start: 24 @18760 has 33 MA's), (Start: 29 @18787 has 3 MA's), (39, 18844), (40, 18874), (43, 18907), (51, 18958), (59, 19009),

Gene: SwissCheese_32 Start: 24456, Stop: 24803, Start Num: 22

Candidate Starts for SwissCheese_32:

(Start: 6 @24366 has 3 MA's), (Start: 22 @24456 has 197 MA's), (Start: 27 @24477 has 8 MA's), (Start: 28 @24483 has 3 MA's), (43, 24609), (50, 24654),

Gene: Switzer_31 Start: 23860, Stop: 24207, Start Num: 22

Candidate Starts for Switzer_31:

(Start: 6 @23770 has 3 MA's), (Start: 22 @23860 has 197 MA's), (Start: 27 @23881 has 8 MA's), (Start: 28 @23887 has 3 MA's), (43, 24013), (50, 24058),

Gene: Swole_32 Start: 24269, Stop: 24616, Start Num: 22

Candidate Starts for Swole_32:

(Start: 6 @24179 has 3 MA's), (Start: 22 @24269 has 197 MA's), (Start: 27 @24290 has 8 MA's), (Start: 28 @24296 has 3 MA's), (43, 24422), (50, 24467),

Gene: TWAMP_26 Start: 18760, Stop: 19080, Start Num: 24

Candidate Starts for TWAMP_26:

(Start: 24 @18760 has 33 MA's), (Start: 29 @18787 has 3 MA's), (39, 18844), (40, 18874), (43, 18907), (51, 18958), (59, 19009),

Gene: Takoda_26 Start: 18720, Stop: 19040, Start Num: 24

Candidate Starts for Takoda_26:

(Start: 24 @18720 has 33 MA's), (Start: 29 @18747 has 3 MA's), (39, 18804), (40, 18834), (43, 18867), (51, 18918), (59, 18969),

Gene: Target_33 Start: 25243, Stop: 25590, Start Num: 22

Candidate Starts for Target_33:

(Start: 6 @25153 has 3 MA's), (Start: 22 @25243 has 197 MA's), (25, 25255), (Start: 27 @25264 has 8 MA's), (Start: 28 @25270 has 3 MA's), (43, 25396), (50, 25441),

Gene: Tasp14_31 Start: 23973, Stop: 24320, Start Num: 22

Candidate Starts for Tasp14_31:

(Start: 6 @23883 has 3 MA's), (Start: 22 @23973 has 197 MA's), (Start: 27 @23994 has 8 MA's), (Start: 28 @24000 has 3 MA's), (43, 24126), (50, 24171),

Gene: Teamocil_46 Start: 31093, Stop: 31521, Start Num: 9

Candidate Starts for Teamocil_46:

(2, 30991), (5, 31066), (Start: 9 @31093 has 45 MA's), (Start: 12 @31102 has 1 MA's), (Start: 19 @31141 has 1 MA's), (44, 31315), (46, 31330), (53, 31372),

Gene: Teodoridan_28 Start: 23094, Stop: 23441, Start Num: 22

Candidate Starts for Teodoridan_28:

(Start: 6 @23004 has 3 MA's), (Start: 22 @23094 has 197 MA's), (Start: 27 @23115 has 8 MA's), (Start: 28 @23121 has 3 MA's), (43, 23247), (50, 23292),

Gene: Terij_40 Start: 29923, Stop: 30348, Start Num: 9

Candidate Starts for Terij_40:

(Start: 9 @29923 has 45 MA's), (Start: 12 @29932 has 1 MA's), (14, 29941), (15, 29944), (Start: 19 @29971 has 1 MA's), (44, 30145), (46, 30160), (53, 30202), (54, 30208),

Gene: TheloniousMonk_32 Start: 25387, Stop: 25734, Start Num: 22

Candidate Starts for TheloniousMonk_32:

(Start: 6 @25297 has 3 MA's), (Start: 22 @25387 has 197 MA's), (Start: 27 @25408 has 8 MA's), (Start: 28 @25414 has 3 MA's), (43, 25540), (50, 25585),

Gene: Thor_30 Start: 23848, Stop: 24195, Start Num: 22

Candidate Starts for Thor_30:

(Start: 6 @23758 has 3 MA's), (Start: 22 @23848 has 197 MA's), (Start: 27 @23869 has 8 MA's), (Start: 28 @23875 has 3 MA's), (43, 24001), (50, 24046),

Gene: Topgun_30 Start: 23601, Stop: 23948, Start Num: 22

Candidate Starts for Topgun_30:

(Start: 6 @23511 has 3 MA's), (Start: 22 @23601 has 197 MA's), (Start: 27 @23622 has 8 MA's), (Start: 28 @23628 has 3 MA's), (43, 23754), (50, 23799),

Gene: Tote_32 Start: 24269, Stop: 24616, Start Num: 22

Candidate Starts for Tote_32:

(Start: 6 @24179 has 3 MA's), (Start: 22 @24269 has 197 MA's), (Start: 27 @24290 has 8 MA's), (Start: 28 @24296 has 3 MA's), (43, 24422), (50, 24467),

Gene: Traft412_32 Start: 24697, Stop: 24990, Start Num: 23

Candidate Starts for Traft412_32:

(Start: 6 @24601 has 3 MA's), (Start: 22 @24691 has 197 MA's), (Start: 23 @24697 has 9 MA's), (34, 24760), (38, 24775), (43, 24838), (47, 24856), (59, 24919),

Gene: Treddle_32 Start: 24987, Stop: 25280, Start Num: 23

Candidate Starts for Treddle_32:

(Start: 6 @24891 has 3 MA's), (Start: 22 @24981 has 197 MA's), (Start: 23 @24987 has 9 MA's), (34, 25050), (38, 25065), (43, 25128), (47, 25146), (59, 25209),

Gene: Tripl3t_31 Start: 24600, Stop: 24947, Start Num: 22

Candidate Starts for Tripl3t_31:

(Start: 6 @24510 has 3 MA's), (Start: 22 @24600 has 197 MA's), (Start: 27 @24621 has 8 MA's), (Start: 28 @24627 has 3 MA's), (43, 24753), (50, 24798),

Gene: Trouble_31 Start: 24547, Stop: 24894, Start Num: 22

Candidate Starts for Trouble_31:

(Start: 6 @24457 has 3 MA's), (Start: 22 @24547 has 197 MA's), (Start: 27 @24568 has 8 MA's), (Start: 28 @24574 has 3 MA's), (43, 24700), (50, 24745),

Gene: Turj99_29 Start: 23487, Stop: 23834, Start Num: 22

Candidate Starts for Turj99_29:

(Start: 6 @23397 has 3 MA's), (Start: 22 @23487 has 197 MA's), (Start: 27 @23508 has 8 MA's), (Start: 28 @23514 has 3 MA's), (43, 23640), (50, 23685),

Gene: TwoPeat_31 Start: 24068, Stop: 24415, Start Num: 22

Candidate Starts for TwoPeat_31:

(Start: 6 @23978 has 3 MA's), (Start: 22 @24068 has 197 MA's), (Start: 27 @24089 has 8 MA's), (Start: 28 @24095 has 3 MA's), (43, 24221), (50, 24266),

Gene: Tyrumbra_44 Start: 32255, Stop: 32632, Start Num: 19

Candidate Starts for Tyrumbra_44:

(Start: 9 @32210 has 45 MA's), (Start: 10 @32213 has 1 MA's), (Start: 19 @32255 has 1 MA's), (46, 32444), (49, 32465),

Gene: U2_30 Start: 23893, Stop: 24213, Start Num: 28

Candidate Starts for U2_30:

(Start: 6 @23776 has 3 MA's), (Start: 22 @23866 has 197 MA's), (Start: 27 @23887 has 8 MA's), (Start: 28 @23893 has 3 MA's), (43, 24019), (50, 24064),

Gene: UhSalsa_26 Start: 18760, Stop: 19080, Start Num: 24

Candidate Starts for UhSalsa_26:

(Start: 24 @18760 has 33 MA's), (Start: 29 @18787 has 3 MA's), (39, 18844), (40, 18874), (43, 18907), (51, 18958), (59, 19009),

Gene: Violet_29 Start: 24273, Stop: 24620, Start Num: 22

Candidate Starts for Violet_29:

(Start: 6 @24183 has 3 MA's), (Start: 22 @24273 has 197 MA's), (Start: 27 @24294 has 8 MA's), (Start: 28 @24300 has 3 MA's), (43, 24426), (50, 24471),

Gene: Watermelon_32 Start: 24609, Stop: 24956, Start Num: 22

Candidate Starts for Watermelon_32:

(Start: 6 @24519 has 3 MA's), (Start: 22 @24609 has 197 MA's), (Start: 27 @24630 has 8 MA's), (Start: 28 @24636 has 3 MA's), (43, 24762), (50, 24807),

Gene: Wheeler_30 Start: 24041, Stop: 24388, Start Num: 22

Candidate Starts for Wheeler_30:

(Start: 6 @23951 has 3 MA's), (Start: 22 @24041 has 197 MA's), (Start: 27 @24062 has 8 MA's), (Start: 28 @24068 has 3 MA's), (43, 24194), (50, 24239),

Gene: Whitspit_31 Start: 24393, Stop: 24740, Start Num: 22

Candidate Starts for Whitspit_31:

(Start: 6 @24303 has 3 MA's), (Start: 22 @24393 has 197 MA's), (Start: 27 @24414 has 8 MA's), (Start: 28 @24420 has 3 MA's), (43, 24546), (50, 24591),

Gene: Wilkins_30 Start: 23579, Stop: 23878, Start Num: 22

Candidate Starts for Wilkins_30:

(Start: 6 @23489 has 3 MA's), (Start: 22 @23579 has 197 MA's), (Start: 23 @23585 has 9 MA's), (34, 23648), (38, 23663), (43, 23726), (47, 23744), (59, 23807),

Gene: Yeti_45 Start: 31372, Stop: 31794, Start Num: 9

Candidate Starts for Yeti_45:

(Start: 9 @31372 has 45 MA's), (Start: 12 @31381 has 1 MA's), (Start: 19 @31417 has 1 MA's), (44, 31591), (46, 31606), (51, 31639), (53, 31648), (54, 31654), (58, 31693),

Gene: Yogi_26 Start: 18734, Stop: 19054, Start Num: 24

Candidate Starts for Yogi_26:

(Start: 24 @18734 has 33 MA's), (Start: 29 @18761 has 3 MA's), (39, 18818), (40, 18848), (43, 18881), (51, 18932), (57, 18965), (59, 18983),

Gene: Yoncess_26 Start: 18734, Stop: 19054, Start Num: 24

Candidate Starts for Yoncess_26:

(Start: 24 @18734 has 33 MA's), (Start: 29 @18761 has 3 MA's), (39, 18818), (40, 18848), (43, 18881), (51, 18932), (57, 18965), (59, 18983),

Gene: Zapato_44 Start: 31522, Stop: 31941, Start Num: 9

Candidate Starts for Zapato_44:

(Start: 9 @31522 has 45 MA's), (Start: 10 @31525 has 1 MA's), (Start: 19 @31564 has 1 MA's), (44, 31738), (46, 31753), (49, 31774), (53, 31795),

Gene: Zeeculate_30 Start: 24480, Stop: 24827, Start Num: 22

Candidate Starts for Zeeculate_30:

(Start: 6 @24390 has 3 MA's), (Start: 22 @24480 has 197 MA's), (Start: 27 @24501 has 8 MA's), (Start: 28 @24507 has 3 MA's), (43, 24633), (50, 24678),

Gene: Zephyr_30 Start: 23842, Stop: 24189, Start Num: 22

Candidate Starts for Zephyr_30:

(Start: 6 @23752 has 3 MA's), (Start: 22 @23842 has 197 MA's), (Start: 27 @23863 has 8 MA's), (Start: 28 @23869 has 3 MA's), (43, 23995), (50, 24040),

Gene: Zeuska_31 Start: 24276, Stop: 24623, Start Num: 22

Candidate Starts for Zeuska_31:

(Start: 6 @24186 has 3 MA's), (Start: 22 @24276 has 197 MA's), (Start: 27 @24297 has 8 MA's), (Start: 28 @24303 has 3 MA's), (43, 24429), (50, 24474),