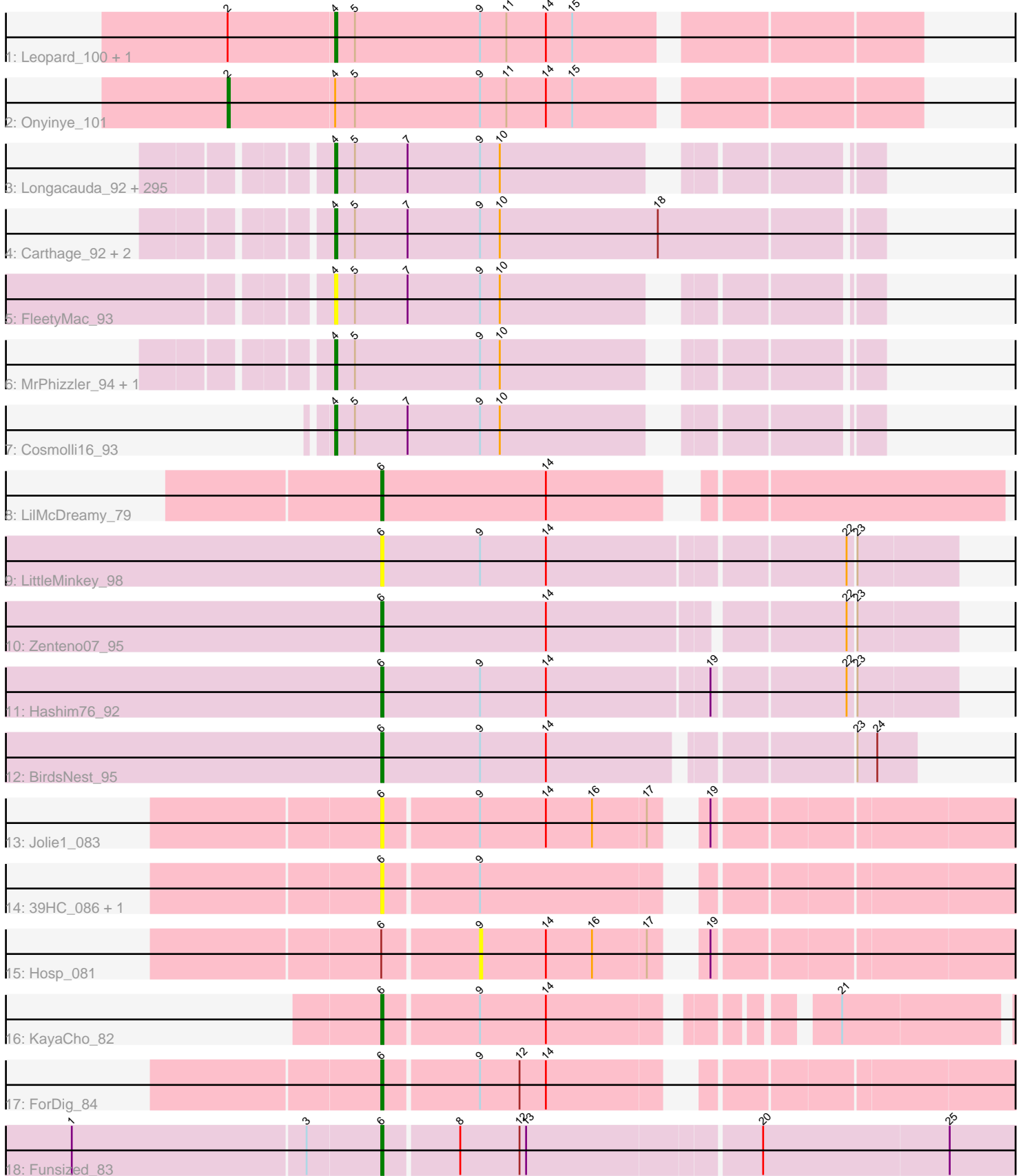


Pham 292450



Note: Tracks are now grouped by subcluster and scaled. Switching in subcluster is indicated by changes in track color. Track scale is now set by default to display the region 30 bp upstream of start 1 to 30 bp downstream of the last possible start. If this default region is judged to be packed too tightly with annotated starts, the track will be further scaled to only show that region of the ORF with annotated starts. This action will be indicated by adding "Zoomed" to the title. For starts, yellow indicates the location of called starts comprised solely of Glimmer/GeneMark auto-annotations, green indicates the location of called starts with at least 1 manual gene annotation.

Pham 292450 Report

This analysis was run 04/18/26 on database version 643.

Pham number 292450 has 318 members, 31 are drafts.

Phages represented in each track:

- Track 1 : Leopard_100, Aikoy_102
- Track 2 : Onyinye_101
- Track 3 : Longacauda_92, Pacifista_90, Virgeve_89, Simielle_90, GeneCoco_91, Mcshane_90, CampRoach_91, Craff_92, Aonishiki_91, Phipps_89, LeeLot_89, BatteryCK_89, Serendipity_90, SDcharge11_90, Sigman_90, Chunky_90, Durga_93, Riggan_92, Struggle_91, Lulumae_86, BlackStallion_90, RedMaple_90, AltPhacts_88, Piglet_0090, BlacksBerry_91, Thunderbird_91, Antonia_90, Labeouficaum_91, Olak_90, Phergie_91, UAch1_92, Eugenia_93, Zaider_92, Olive_87, BoogieWoogie_90, Oline_90, Harvey_88, Placalicious_89, Derpp_90, Wallhey_92, Hocus_89, JacAttac_91, Hartsy_89, Orfeu_90, Pinkman_90, Basato_90, Lumine_92, Held_89, Phunky_88, Quisquilliae_93, Jiraiya_92, Gwennie1_90, Pherdinand_92, Dingo_88, Etaye_90, TallGrassMM_90, Doddsville_88, Inchworm_92, Bishoperium_91, Boehler_89, FluffyNinja_92, Mag7_89, Numberten_90, PhrodoBaggins_93, Gwilliam_91, Roliet_88, Banjo_87, Hekos_89, Kikipoo_93, Chah_93, Badfish_91, Chorkpop_92, Khan1_91, Hetaeria_91, HSavage_89, Inverness_89, Cannibal_91, Caspiboi_90, Kwadwo_90, Slatt_91, Adriana_91, CharlieGBrown_89, Orwigg_90, Hertubise_90, Hamish_88, FugateOSU_91, KlimbOn_90, TomBombadil_91, Fozzie_88, Selr12_92, Matalotodo_89, Manad_90, Fringe_95, Serpentine_0092, DirtJuice_90, Soto_88, Surely_91, Nicole21_92, ShiVal_89, Vista_90, Childish_91, Daffy_90, GreenChile_90, Altwerkus_88, Fang_92, Roscoe_90, Burr_91, Kwksand96_92, Beaglebox_87, KLucky39_89, LuckyMarjie_88, Vivaldi_91, Plmatters_88, Chute_91, Bluephacebaby_90, HogWash_91, Legolas_92, Cornbread_89, Frankicide_89, Dione_89, Colbert_89, OSmaximus_92, Larson_93, MitKao_91, EmpTee_90, LemonSlice_91, Haimas_88, Phareon_88, Horchata_86, Oosterbaan_91, Cobra_91, Jillium_92, Sheila_85, Spartan300_90, Cher_91, Grand2040_89, Pipsqueak_88, Plata_89, Tooj_88, DonSancho_86, Squid_90, Samaymay_91, CamL_91, Buckeye_90, Morty_91, Chuni_92, Scoot17C_91, MiniBoss_87, Morgushi_88, MRabcd_91, ShadowBud_92, Nacho_0093, Haleema_90, Anderson_92, Chipette_89, Scrick_90, ABU_89, MelsMeow_90, Kloppinator_91, Jiminy_91, DaddyDaniels_94, Kimbrough_92, HighStump_92, OneBrain_93, Melc17_88, SirBeauregard_92, LostAndPhound_90, Virapocalypse_92, Ashraf_92, Sophia_89, Yoshand_92, Mulan_90, BlueHusk_92, Usavi_91, Coletti_94, Crownjwl_88, Magic8_90, Swiphy_93, RedRaider89_90, Eremos_89, Mikota_86, Chaelin_92, Daka_93, DoesntMatter_88, Vaticameos_88, QueenBeane_91, Zelda_91, Mosaic_88, OliverWalter_90, True_89, Freya_87, Dice_90, UncleHowie_87, LeiMonet_94, Soile_92, Apizium_89, Karn_91, DuchessDung_88, Mesh1_92,

Lasso_90, PG1_89, Vortex_89, LasagnaCat_92, DelRivs_89, Kahve_91, Waterdiva_92, Duggie_91, Mecca_91, Prickles_92, Mana_88, Mutante_92, PinheadLarry_90, Triad_91, FremontTroll_89, Lego3393_89, KingTut_82, Nathan_91, Maru_91, Keitherie_94, Megamind20_91, Iridoclysis_90, Gyarad_0090, Megatron_92, Orion_89, Jesabah_93, Skippy_91, PhenghisKhan_91, Tomlarah_91, AbsoluteMadLad_89, Dati_88, PhatLouie_93, Potter_85, Xavier_90, ImtiyazSitla_92, Roy17_88, Solosis_89, ProfessorX_89, Emiris_93, Andre_93, Podrick_89, Charles1_92, MichaelPhcott_89, Veritas_90, KingVeVeVe_89, Maskar_92, Iridessa_92, Trypo_91, CheetO_88, Brilliant_94, Nyala_90, Valjean_89, PhatCats2014_90, Murdoc_87, Ricotta_91, Toni_90, Timmi_89, PhrankReynolds_89, Puhltonio_87, DolOn_95, Newman_87, ElvisPhasley_92, FriarPreacher_88, JDog_90, IsaacEli_93, Pops_88, Lehmann_92, Swish_92, Phleuron_88, TyrionL_91, Omniscient_92, Giraffe_91, Lulwa_88, HenryJackson_91, Zonia_91, Aleia_90, SilverBell_92, Squiggle_90, Kailash_89, JakeO_92, Weher20_88, Happabalu_89, Gareth_91, Thora_89, ThreeOh3D2_92, TooFast2Furius_92, AngelCake_90, Windsor_91, YouGoGlencoco_91, Mesmerelda_90, Gophee_90, Katniss_93, Phamished_90, Schueller_89, SassyCat97_89, JangoPhett_89, Telesworld_89

- Track 4 : Carthage_92, Robyn_93, Vaishali24_92
- Track 5 : FleetyMac_93
- Track 6 : MrPhizzler_94, Rimu_89
- Track 7 : Cosmolli16_93
- Track 8 : LilMcDreamy_79
- Track 9 : LittleMinkey_98
- Track 10 : Zenteno07_95
- Track 11 : Hashim76_92
- Track 12 : BirdsNest_95
- Track 13 : Jolie1_083
- Track 14 : 39HC_086, 40BC_086
- Track 15 : Hosp_081
- Track 16 : KayaCho_82
- Track 17 : ForDig_84
- Track 18 : Funsized_83

Summary of Final Annotations (See graph section above for start numbers):

The start number called the most often in the published annotations is 4, it was called in 279 of the 287 non-draft genes in the pham.

Genes that call this "Most Annotated" start:

- ABU_89, AbsoluteMadLad_89, Adriana_91, Aikoy_102, Aleia_90, AltPhacts_88, Altwerkus_88, Anderson_92, Andre_93, AngelCake_90, Antonia_90, Aonishiki_91, Apizium_89, Ashraf_92, Badfish_91, Banjo_87, Basato_90, BatteryCK_89, Beaglebox_87, Bishoperium_91, BlackStallion_90, BlacksBerry_91, BlueHusk_92, Bluephacebaby_90, Boehler_89, BoogieWoogie_90, Brilliant_94, Buckeye_90, Burr_91, CamL_91, CampRoach_91, Cannibal_91, Carthage_92, CaspiBoi_90, Chaelin_92, Chah_93, Charles1_92, CharlieGBrown_89, CheetO_88, Cher_91, Childish_91, Chipette_89, Chorkpop_92, Chuni_92, Chunky_90, Chute_91, Cobra_91, Colbert_89, Coletti_94, Cornbread_89, Cosmolli16_93, Craff_92, Crownjwl_88, DaddyDaniels_94, Daffy_90, Daka_93, Dati_88, DelRivs_89, Derpp_90, Dice_90, Dingo_88, Dione_89, DirtJuice_90, Doddsville_88,

DoesntMatter_88, DolOn_95, DonSanchon_86, DuchessDung_88, Duggie_91, Durga_93, ElvisPhasley_92, Emiris_93, EmpTee_90, Eremos_89, Etaye_90, Eugenia_93, Fang_92, FleetyMac_93, FluffyNinja_92, Fozzie_88, Frankicide_89, FremontTroll_89, Freya_87, FriarPreacher_88, Fringe_95, FugateOSU_91, Gareth_91, GeneCoco_91, Giraffe_91, Gophee_90, Grand2040_89, GreenChile_90, Gwennie1_90, Gwilliam_91, Gyarad_0090, HSavage_89, Haimas_88, Haleema_90, Hamish_88, Happabalu_89, Hartsy_89, Harvey_88, Hekos_89, Held_89, HenryJackson_91, Hertubise_90, Hetaeria_91, HighStump_92, Hocus_89, HogWash_91, Horchata_86, ImtiyazSitla_92, Inchworm_92, Inverness_89, Iridessa_92, Iridoclysis_90, IsaacEli_93, JDog_90, JacAttac_91, JakeO_92, JangoPhett_89, Jesabah_93, Jillium_92, Jiminy_91, Jiraiya_92, KLucky39_89, Kahve_91, Kailash_89, Karn_91, Katniss_93, Keitherie_94, Khan1_91, Kikipoo_93, Kimbrough_92, KingTut_82, KingVeVeVe_89, KlimbOn_90, Kloppinator_91, Kwadwo_90, Kwksand96_92, Labeouficaum_91, Larson_93, LasagnaCat_92, Lasso_90, LeeLot_89, Lego3393_89, Legolas_92, Lehmann_92, LeiMonet_94, LemonSlice_91, Leopard_100, Longacauda_92, LostAndPhound_90, LuckyMarjie_88, Lulumae_86, Lulwa_88, Lumine_92, MRabcd_91, Mag7_89, Magic8_90, Mana_88, Manad_90, Maru_91, Maskar_92, Matalotodo_89, Mcshane_90, Mecca_91, Megamind20_91, Megatron_92, Melc17_88, MelsMeow_90, Mesh1_92, Mesmerelda_90, MichaelPhcott_89, Mikota_86, MiniBoss_87, MitKao_91, Morgushi_88, Morty_91, Mosaic_88, MrPhizzler_94, Mulan_90, Murdoc_87, Mutante_92, Nacho_0093, Nathan_91, Newman_87, Nicole21_92, Numberten_90, Nyala_90, OSmaximus_92, Olak_90, Oline_90, Olive_87, OliverWalter_90, Omniscient_92, OneBrain_93, Oosterbaan_91, Orfeu_90, Orion_89, Orwigg_90, PG1_89, Pacifista_90, Phamished_90, Phareon_88, PhatCats2014_90, PhatLouie_93, PhenghisKhan_91, Pherdinand_92, Phergie_91, Phipps_89, Phleuron_88, PhrankReynolds_89, PhrodoBaggins_93, Phunky_88, Piglet_0090, PinheadLarry_90, Pinkman_90, Pipsqueak_88, Placalicious_89, Plata_89, Plmatters_88, Podrick_89, Pops_88, Potter_85, Prickles_92, ProfessorX_89, Puhltonio_87, QueenBeane_91, Quisquiliae_93, RedMaple_90, RedRaider89_90, Ricotta_91, Riggan_92, Rimu_89, Robyn_93, Roliet_88, Roscoe_90, Roy17_88, SDcharge11_90, Samaymay_91, SassyCat97_89, Schueller_89, Scoot17C_91, Scrick_90, Selr12_92, Serendipity_90, Serpentine_0092, ShadowBud_92, Sheila_85, ShiVal_89, Sigman_90, SilverBell_92, Simielle_90, SirBeauregard_92, Skippy_91, Slatt_91, Soile_92, Solosis_89, Sophia_89, Soto_88, Spartan300_90, Squid_90, Squiggle_90, Struggle_91, Surely_91, Swiphy_93, Swish_92, TallGrassMM_90, Telesworld_89, Thora_89, ThreeOh3D2_92, Thunderbird_91, Timmi_89, TomBombadil_91, Tomlarah_91, Toni_90, TooFast2Furius_92, Tooj_88, Triad_91, True_89, Trypo_91, TyrionL_91, UAch1_92, UncleHowie_87, Usavi_91, Vaishali24_92, Valjean_89, Vaticameos_88, Veritas_90, Virapocalypse_92, Virgeve_89, Vista_90, Vivaldi_91, Vortex_89, Wallhey_92, Waterdiva_92, Weher20_88, Windsor_91, Xavier_90, Yoshand_92, YouGoGlencoco_91, Zaider_92, Zelda_91, Zonia_91,

Genes that have the "Most Annotated" start but do not call it:

- Onyinye_101,

Genes that do not have the "Most Annotated" start:

- 39HC_086, 40BC_086, BirdsNest_95, ForDig_84, Funsized_83, Hashim76_92, Hosp_081, Jolie1_083, KayaCho_82, LilMcDreamy_79, LittleMinkey_98, Zenteno07_95,

Summary by start number:

Start 2:

- Found in 3 of 318 (0.9%) of genes in pham
- Manual Annotations of this start: 1 of 287
- Called 33.3% of time when present
- Phage (with cluster) where this start called: Onyinye_101 (AE),

Start 4:

- Found in 306 of 318 (96.2%) of genes in pham
- Manual Annotations of this start: 279 of 287
- Called 99.7% of time when present
- Phage (with cluster) where this start called: ABU_89 (B1), AbsoluteMadLad_89 (B1), Adriana_91 (B1), Aikoy_102 (AE), Aleia_90 (B1), AltPhacts_88 (B1), Altwerkus_88 (B1), Anderson_92 (B1), Andre_93 (B1), AngelCake_90 (B1), Antonia_90 (B1), Aonishiki_91 (B1), Apizium_89 (B1), Ashraf_92 (B1), Badfish_91 (B1), Banjo_87 (B1), Basato_90 (B1), BatteryCK_89 (B1), Beaglebox_87 (B1), Bishoperium_91 (B1), BlackStallion_90 (B1), BlacksBerry_91 (B1), BlueHusk_92 (B1), Bluephacebaby_90 (B1), Boehler_89 (B1), BoogieWoogie_90 (B1), Brilliant_94 (B1), Buckeye_90 (B1), Burr_91 (B1), CamL_91 (B1), CampRoach_91 (B1), Cannibal_91 (B1), Carthage_92 (B1), Caspiboi_90 (B1), Chaelin_92 (B1), Chah_93 (B1), Charles1_92 (B1), CharlieGBrown_89 (B1), CheetO_88 (B1), Cher_91 (B1), Childish_91 (B1), Chipette_89 (B1), Chorkpop_92 (B1), Chuni_92 (B1), Chunky_90 (B1), Chute_91 (B1), Cobra_91 (B1), Colbert_89 (B1), Coletti_94 (B1), Cornbread_89 (B1), Cosmolli16_93 (B1), Craff_92 (B1), Crownjwl_88 (B1), DaddyDaniels_94 (B1), Daffy_90 (B1), Daka_93 (B1), Dati_88 (B1), DelRivs_89 (B1), Derpp_90 (B1), Dice_90 (B1), Dingo_88 (B1), Dione_89 (B1), DirtJuice_90 (B1), Doddsville_88 (B1), DoesntMatter_88 (B1), DolOn_95 (B1), DonSanchon_86 (B1), DuchessDung_88 (B1), Duggie_91 (B1), Durga_93 (B1), ElvisPhasley_92 (B1), Emiris_93 (B1), EmpTee_90 (B1), Eremos_89 (B1), Etaye_90 (B1), Eugenia_93 (B1), Fang_92 (B1), FleetyMac_93 (B1), FluffyNinja_92 (B1), Fozzie_88 (B1), Frankicide_89 (B1), FremontTroll_89 (B1), Freya_87 (B1), FriarPreacher_88 (B1), Fringe_95 (B1), FugateOSU_91 (B1), Gareth_91 (B1), GeneCoco_91 (B1), Giraffe_91 (B1), Gophee_90 (B1), Grand2040_89 (B1), GreenChile_90 (B1), Gwennie1_90 (B1), Gwilliam_91 (B1), Gyarad_0090 (B1), HSavage_89 (B1), Haimas_88 (B1), Haleema_90 (B1), Hamish_88 (B1), Happabalu_89 (B1), Hartsy_89 (B1), Harvey_88 (B1), Hekos_89 (B1), Held_89 (B1), HenryJackson_91 (B1), Hertubise_90 (B1), Hetaeria_91 (B1), HighStump_92 (B1), Hocus_89 (B1), HogWash_91 (B1), Horchata_86 (B1), ImtiyazSitla_92 (B1), Inchworm_92 (B1), Inverness_89 (B1), Iridessa_92 (B1), Iridoclysis_90 (B1), IsaacEli_93 (B1), JDog_90 (B1), JacAttac_91 (B1), JakeO_92 (B1), JangoPhett_89 (B1), Jesabah_93 (B1), Jillium_92 (B1), Jiminy_91 (B1), Jiraiya_92 (B1), KLUcky39_89 (B1), Kahve_91 (B1), Kailash_89 (B1), Karn_91 (B1), Katniss_93 (B1), Keitherie_94 (B1), Khan1_91 (B1), Kikipoo_93 (B1), Kimbrough_92 (B1), KingTut_82 (B1), KingVeVeVe_89 (B1), KlimbOn_90 (B1), Kloppinator_91 (B1), Kwadwo_90 (B1), Kwksand96_92 (B1), Labeouficaum_91 (B1), Larson_93 (B1), LasagnaCat_92 (B1), Lasso_90 (B1), LeeLot_89 (B1), Lego3393_89 (B1), Legolas_92 (B1), Lehmann_92 (B1), LeiMonet_94 (B1), LemonSlice_91 (B1), Leopard_100 (AE), Longacauda_92 (B1), LostAndPhound_90 (B1), LuckyMarjie_88 (B1), Lulumae_86 (B1), Lulwa_88 (B1), Lumine_92 (B1), MRabcd_91 (B1), Mag7_89 (B1), Magic8_90 (B1), Mana_88 (B1), Manad_90 (B1), Maru_91 (B1), Maskar_92 (B1), Matalotodo_89 (B1), Mcshane_90 (B1), Mecca_91 (B1), Megamind20_91 (B1), Megatron_92 (B1), Melc17_88 (B1), MelsMeow_90 (B1), Mesh1_92 (B1), Mesmerelda_90 (B1), MichaelPhcott_89 (B1), Mikota_86 (B1), MiniBoss_87 (B1), MitKao_91 (B1), Morgushi_88 (B1), Morty_91 (B1), Mosaic_88 (B1), MrPhizzler_94

(B1), Mulan_90 (B1), Murdoc_87 (B1), Mutante_92 (B1), Nacho_0093 (B1), Nathan_91 (B1), Newman_87 (B1), Nicole21_92 (B1), Numberten_90 (B1), Nyala_90 (B1), OSmaximus_92 (B1), Olak_90 (B1), Oline_90 (B1), Olive_87 (B1), OliverWalter_90 (B1), Omniscient_92 (B1), OneBrain_93 (B1), Oosterbaan_91 (B1), Orfeu_90 (B1), Orion_89 (B1), Orwigg_90 (B1), PG1_89 (B1), Pacifista_90 (B1), Phamished_90 (B1), Phareon_88 (B1), PhatCats2014_90 (B1), PhatLouie_93 (B1), PhenghisKhan_91 (B1), Pherdinand_92 (B1), Phergie_91 (B1), Phipps_89 (B1), Phleuron_88 (B1), PhrankReynolds_89 (B1), PhrodoBaggins_93 (B1), Phunky_88 (B1), Piglet_0090 (B1), PinheadLarry_90 (B1), Pinkman_90 (B1), Pipsqueak_88 (B1), Placalicious_89 (B1), Plata_89 (B1), Plmatters_88 (B1), Podrick_89 (B1), Pops_88 (B1), Potter_85 (B1), Prickles_92 (B1), ProfessorX_89 (B1), Puhltonio_87 (B1), QueenBeane_91 (B1), Quisquiliae_93 (B1), RedMaple_90 (B1), RedRaider89_90 (B1), Ricotta_91 (B1), Riggan_92 (B1), Rimu_89 (B1), Robyn_93 (B1), Roliet_88 (B1), Roscoe_90 (B1), Roy17_88 (B1), SDcharge11_90 (B1), Samaymay_91 (B1), SassyCat97_89 (B1), Schueller_89 (B1), Scoot17C_91 (B1), Scrick_90 (B1), Selr12_92 (B1), Serendipity_90 (B1), Serpentine_0092 (B1), ShadowBud_92 (B1), Sheila_85 (B1), ShiVal_89 (B1), Sigman_90 (B1), SilverBell_92 (B1), Simielle_90 (B1), SirBeauregard_92 (B1), Skippy_91 (B1), Slatt_91 (B1), Soile_92 (B1), Solosis_89 (B1), Sophia_89 (B1), Soto_88 (B1), Spartan300_90 (B1), Squid_90 (B1), Squiggle_90 (B1), Struggle_91 (B1), Surely_91 (B1), Swiphy_93 (B1), Swish_92 (B1), TallGrassMM_90 (B1), Telesworld_89 (B1), Thora_89 (B1), ThreeOh3D2_92 (B1), Thunderbird_91 (B1), Timmi_89 (B1), TomBombadil_91 (B1), Tomlarah_91 (B1), Toni_90 (B1), TooFast2Furious_92 (B1), Tooj_88 (B1), Triad_91 (B1), True_89 (B1), Trypo_91 (B1), TyrionL_91 (B1), UAch1_92 (B1), UncleHowie_87 (B1), Usavi_91 (B1), Vaishali24_92 (B1), Valjean_89 (B1), Vaticameos_88 (B1), Veritas_90 (B1), Virapocalypse_92 (B1), Virgeve_89 (B1), Vista_90 (B1), Vivaldi_91 (B1), Vortex_89 (B1), Wallhey_92 (B1), Waterdiva_92 (B1), Weher20_88 (B1), Windsor_91 (B1), Xavier_90 (B1), Yoshand_92 (B1), YouGoGlencoco_91 (B1), Zaider_92 (B1), Zelda_91 (B1), Zonia_91 (B1),

Start 6:

- Found in 12 of 318 (3.8%) of genes in pham
- Manual Annotations of this start: 7 of 287
- Called 91.7% of time when present
- Phage (with cluster) where this start called: 39HC_086 (B6), 40BC_086 (B6), BirdsNest_95 (B13), ForDig_84 (B6), Funsized_83 (B9), Hashim76_92 (B13), Jolie1_083 (B6), KayaCho_82 (B6), LilMcDreamy_79 (B12), LittleMinkey_98 (B13), Zenteno07_95 (B13),

Start 9:

- Found in 315 of 318 (99.1%) of genes in pham
- No Manual Annotations of this start.
- Called 0.3% of time when present
- Phage (with cluster) where this start called: Hosp_081 (B6),

Summary by clusters:

There are 6 clusters represented in this pham: AE, B6, B12, B13, B9, B1,

Info for manual annotations of cluster AE:

- Start number 2 was manually annotated 1 time for cluster AE.
- Start number 4 was manually annotated 2 times for cluster AE.

Info for manual annotations of cluster B1:

- Start number 4 was manually annotated 277 times for cluster B1.

Info for manual annotations of cluster B12:

- Start number 6 was manually annotated 1 time for cluster B12.

Info for manual annotations of cluster B13:

- Start number 6 was manually annotated 3 times for cluster B13.

Info for manual annotations of cluster B6:

- Start number 6 was manually annotated 2 times for cluster B6.

Info for manual annotations of cluster B9:

- Start number 6 was manually annotated 1 time for cluster B9.

Gene Information:

Gene: 39HC_086 Start: 65073, Stop: 64801, Start Num: 6

Candidate Starts for 39HC_086:

(Start: 6 @65073 has 7 MA's), (9, 65031),

Gene: 40BC_086 Start: 65073, Stop: 64801, Start Num: 6

Candidate Starts for 40BC_086:

(Start: 6 @65073 has 7 MA's), (9, 65031),

Gene: ABU_89 Start: 64749, Stop: 64528, Start Num: 4

Candidate Starts for ABU_89:

(Start: 4 @64749 has 279 MA's), (5, 64740), (7, 64716), (9, 64683), (10, 64674),

Gene: AbsoluteMadLad_89 Start: 64702, Stop: 64481, Start Num: 4

Candidate Starts for AbsoluteMadLad_89:

(Start: 4 @64702 has 279 MA's), (5, 64693), (7, 64669), (9, 64636), (10, 64627),

Gene: Adriana_91 Start: 65264, Stop: 65043, Start Num: 4

Candidate Starts for Adriana_91:

(Start: 4 @65264 has 279 MA's), (5, 65255), (7, 65231), (9, 65198), (10, 65189),

Gene: Aikoy_102 Start: 66205, Stop: 66456, Start Num: 4

Candidate Starts for Aikoy_102:

(Start: 2 @66157 has 1 MA's), (Start: 4 @66205 has 279 MA's), (5, 66214), (9, 66271), (11, 66283), (14, 66301), (15, 66313),

Gene: Aleia_90 Start: 64392, Stop: 64171, Start Num: 4

Candidate Starts for Aleia_90:

(Start: 4 @64392 has 279 MA's), (5, 64383), (7, 64359), (9, 64326), (10, 64317),

Gene: AltPhacts_88 Start: 63968, Stop: 63747, Start Num: 4

Candidate Starts for AltPhacts_88:

(Start: 4 @63968 has 279 MA's), (5, 63959), (7, 63935), (9, 63902), (10, 63893),

Gene: Altwerkus_88 Start: 64078, Stop: 63857, Start Num: 4

Candidate Starts for Altwerkus_88:

(Start: 4 @64078 has 279 MA's), (5, 64069), (7, 64045), (9, 64012), (10, 64003),

Gene: Anderson_92 Start: 64625, Stop: 64404, Start Num: 4

Candidate Starts for Anderson_92:

(Start: 4 @64625 has 279 MA's), (5, 64616), (7, 64592), (9, 64559), (10, 64550),

Gene: Andre_93 Start: 64647, Stop: 64426, Start Num: 4

Candidate Starts for Andre_93:

(Start: 4 @64647 has 279 MA's), (5, 64638), (7, 64614), (9, 64581), (10, 64572),

Gene: AngelCake_90 Start: 64374, Stop: 64153, Start Num: 4

Candidate Starts for AngelCake_90:

(Start: 4 @64374 has 279 MA's), (5, 64365), (7, 64341), (9, 64308), (10, 64299),

Gene: Antonia_90 Start: 64251, Stop: 64030, Start Num: 4

Candidate Starts for Antonia_90:

(Start: 4 @64251 has 279 MA's), (5, 64242), (7, 64218), (9, 64185), (10, 64176),

Gene: Aonishiki_91 Start: 64560, Stop: 64339, Start Num: 4

Candidate Starts for Aonishiki_91:

(Start: 4 @64560 has 279 MA's), (5, 64551), (7, 64527), (9, 64494), (10, 64485),

Gene: Apizium_89 Start: 63906, Stop: 63685, Start Num: 4

Candidate Starts for Apizium_89:

(Start: 4 @63906 has 279 MA's), (5, 63897), (7, 63873), (9, 63840), (10, 63831),

Gene: Ashraf_92 Start: 64738, Stop: 64517, Start Num: 4

Candidate Starts for Ashraf_92:

(Start: 4 @64738 has 279 MA's), (5, 64729), (7, 64705), (9, 64672), (10, 64663),

Gene: Badfish_91 Start: 64929, Stop: 64708, Start Num: 4

Candidate Starts for Badfish_91:

(Start: 4 @64929 has 279 MA's), (5, 64920), (7, 64896), (9, 64863), (10, 64854),

Gene: Banjo_87 Start: 64195, Stop: 63974, Start Num: 4

Candidate Starts for Banjo_87:

(Start: 4 @64195 has 279 MA's), (5, 64186), (7, 64162), (9, 64129), (10, 64120),

Gene: Basato_90 Start: 64660, Stop: 64439, Start Num: 4

Candidate Starts for Basato_90:

(Start: 4 @64660 has 279 MA's), (5, 64651), (7, 64627), (9, 64594), (10, 64585),

Gene: BatteryCK_89 Start: 64186, Stop: 63965, Start Num: 4

Candidate Starts for BatteryCK_89:

(Start: 4 @64186 has 279 MA's), (5, 64177), (7, 64153), (9, 64120), (10, 64111),

Gene: Beaglebox_87 Start: 64317, Stop: 64096, Start Num: 4

Candidate Starts for Beaglebox_87:

(Start: 4 @64317 has 279 MA's), (5, 64308), (7, 64284), (9, 64251), (10, 64242),

Gene: BirdsNest_95 Start: 67179, Stop: 66952, Start Num: 6

Candidate Starts for BirdsNest_95:

(Start: 6 @67179 has 7 MA's), (9, 67134), (14, 67104), (23, 66978), (24, 66969),

Gene: Bishoperium_91 Start: 64764, Stop: 64543, Start Num: 4

Candidate Starts for Bishoperium_91:

(Start: 4 @64764 has 279 MA's), (5, 64755), (7, 64731), (9, 64698), (10, 64689),

Gene: BlackStallion_90 Start: 64614, Stop: 64393, Start Num: 4

Candidate Starts for BlackStallion_90:

(Start: 4 @64614 has 279 MA's), (5, 64605), (7, 64581), (9, 64548), (10, 64539),

Gene: BlacksBerry_91 Start: 64139, Stop: 63918, Start Num: 4

Candidate Starts for BlacksBerry_91:

(Start: 4 @64139 has 279 MA's), (5, 64130), (7, 64106), (9, 64073), (10, 64064),

Gene: BlueHusk_92 Start: 64438, Stop: 64217, Start Num: 4

Candidate Starts for BlueHusk_92:

(Start: 4 @64438 has 279 MA's), (5, 64429), (7, 64405), (9, 64372), (10, 64363),

Gene: Bluephacebaby_90 Start: 64798, Stop: 64577, Start Num: 4

Candidate Starts for Bluephacebaby_90:

(Start: 4 @64798 has 279 MA's), (5, 64789), (7, 64765), (9, 64732), (10, 64723),

Gene: Boehler_89 Start: 64589, Stop: 64368, Start Num: 4

Candidate Starts for Boehler_89:

(Start: 4 @64589 has 279 MA's), (5, 64580), (7, 64556), (9, 64523), (10, 64514),

Gene: BoogieWoogie_90 Start: 64210, Stop: 63989, Start Num: 4

Candidate Starts for BoogieWoogie_90:

(Start: 4 @64210 has 279 MA's), (5, 64201), (7, 64177), (9, 64144), (10, 64135),

Gene: Brilliant_94 Start: 64778, Stop: 64557, Start Num: 4

Candidate Starts for Brilliant_94:

(Start: 4 @64778 has 279 MA's), (5, 64769), (7, 64745), (9, 64712), (10, 64703),

Gene: Buckeye_90 Start: 65316, Stop: 65095, Start Num: 4

Candidate Starts for Buckeye_90:

(Start: 4 @65316 has 279 MA's), (5, 65307), (7, 65283), (9, 65250), (10, 65241),

Gene: Burr_91 Start: 64250, Stop: 64029, Start Num: 4

Candidate Starts for Burr_91:

(Start: 4 @64250 has 279 MA's), (5, 64241), (7, 64217), (9, 64184), (10, 64175),

Gene: CamL_91 Start: 64549, Stop: 64328, Start Num: 4

Candidate Starts for CamL_91:

(Start: 4 @64549 has 279 MA's), (5, 64540), (7, 64516), (9, 64483), (10, 64474),

Gene: CampRoach_91 Start: 64646, Stop: 64425, Start Num: 4

Candidate Starts for CampRoach_91:

(Start: 4 @64646 has 279 MA's), (5, 64637), (7, 64613), (9, 64580), (10, 64571),

Gene: Cannibal_91 Start: 64652, Stop: 64431, Start Num: 4

Candidate Starts for Cannibal_91:

(Start: 4 @64652 has 279 MA's), (5, 64643), (7, 64619), (9, 64586), (10, 64577),

Gene: Carthage_92 Start: 64329, Stop: 64087, Start Num: 4
Candidate Starts for Carthage_92:
(Start: 4 @64329 has 279 MA's), (5, 64320), (7, 64296), (9, 64263), (10, 64254), (18, 64182),

Gene: Caspiboi_90 Start: 64485, Stop: 64264, Start Num: 4
Candidate Starts for Caspiboi_90:
(Start: 4 @64485 has 279 MA's), (5, 64476), (7, 64452), (9, 64419), (10, 64410),

Gene: Chaelin_92 Start: 64780, Stop: 64559, Start Num: 4
Candidate Starts for Chaelin_92:
(Start: 4 @64780 has 279 MA's), (5, 64771), (7, 64747), (9, 64714), (10, 64705),

Gene: Chah_93 Start: 64349, Stop: 64128, Start Num: 4
Candidate Starts for Chah_93:
(Start: 4 @64349 has 279 MA's), (5, 64340), (7, 64316), (9, 64283), (10, 64274),

Gene: Charles1_92 Start: 64558, Stop: 64337, Start Num: 4
Candidate Starts for Charles1_92:
(Start: 4 @64558 has 279 MA's), (5, 64549), (7, 64525), (9, 64492), (10, 64483),

Gene: CharlieGBrown_89 Start: 64281, Stop: 64060, Start Num: 4
Candidate Starts for CharlieGBrown_89:
(Start: 4 @64281 has 279 MA's), (5, 64272), (7, 64248), (9, 64215), (10, 64206),

Gene: CheetO_88 Start: 64655, Stop: 64434, Start Num: 4
Candidate Starts for CheetO_88:
(Start: 4 @64655 has 279 MA's), (5, 64646), (7, 64622), (9, 64589), (10, 64580),

Gene: Cher_91 Start: 64753, Stop: 64532, Start Num: 4
Candidate Starts for Cher_91:
(Start: 4 @64753 has 279 MA's), (5, 64744), (7, 64720), (9, 64687), (10, 64678),

Gene: Childish_91 Start: 64943, Stop: 64722, Start Num: 4
Candidate Starts for Childish_91:
(Start: 4 @64943 has 279 MA's), (5, 64934), (7, 64910), (9, 64877), (10, 64868),

Gene: Chipette_89 Start: 64480, Stop: 64259, Start Num: 4
Candidate Starts for Chipette_89:
(Start: 4 @64480 has 279 MA's), (5, 64471), (7, 64447), (9, 64414), (10, 64405),

Gene: Chorkpop_92 Start: 64406, Stop: 64185, Start Num: 4
Candidate Starts for Chorkpop_92:
(Start: 4 @64406 has 279 MA's), (5, 64397), (7, 64373), (9, 64340), (10, 64331),

Gene: Chuni_92 Start: 64991, Stop: 64770, Start Num: 4
Candidate Starts for Chuni_92:
(Start: 4 @64991 has 279 MA's), (5, 64982), (7, 64958), (9, 64925), (10, 64916),

Gene: Chunky_90 Start: 64251, Stop: 64030, Start Num: 4
Candidate Starts for Chunky_90:
(Start: 4 @64251 has 279 MA's), (5, 64242), (7, 64218), (9, 64185), (10, 64176),

Gene: Chute_91 Start: 64944, Stop: 64723, Start Num: 4
Candidate Starts for Chute_91:
(Start: 4 @64944 has 279 MA's), (5, 64935), (7, 64911), (9, 64878), (10, 64869),

Gene: Cobra_91 Start: 64775, Stop: 64554, Start Num: 4
Candidate Starts for Cobra_91:
(Start: 4 @64775 has 279 MA's), (5, 64766), (7, 64742), (9, 64709), (10, 64700),

Gene: Colbert_89 Start: 63673, Stop: 63452, Start Num: 4
Candidate Starts for Colbert_89:
(Start: 4 @63673 has 279 MA's), (5, 63664), (7, 63640), (9, 63607), (10, 63598),

Gene: Coletti_94 Start: 65300, Stop: 65079, Start Num: 4
Candidate Starts for Coletti_94:
(Start: 4 @65300 has 279 MA's), (5, 65291), (7, 65267), (9, 65234), (10, 65225),

Gene: Cornbread_89 Start: 64433, Stop: 64212, Start Num: 4
Candidate Starts for Cornbread_89:
(Start: 4 @64433 has 279 MA's), (5, 64424), (7, 64400), (9, 64367), (10, 64358),

Gene: Cosmolli16_93 Start: 65121, Stop: 64900, Start Num: 4
Candidate Starts for Cosmolli16_93:
(Start: 4 @65121 has 279 MA's), (5, 65112), (7, 65088), (9, 65055), (10, 65046),

Gene: Craff_92 Start: 65164, Stop: 64943, Start Num: 4
Candidate Starts for Craff_92:
(Start: 4 @65164 has 279 MA's), (5, 65155), (7, 65131), (9, 65098), (10, 65089),

Gene: Crownjwl_88 Start: 64430, Stop: 64209, Start Num: 4
Candidate Starts for Crownjwl_88:
(Start: 4 @64430 has 279 MA's), (5, 64421), (7, 64397), (9, 64364), (10, 64355),

Gene: DaddyDaniels_94 Start: 64897, Stop: 64676, Start Num: 4
Candidate Starts for DaddyDaniels_94:
(Start: 4 @64897 has 279 MA's), (5, 64888), (7, 64864), (9, 64831), (10, 64822),

Gene: Daffy_90 Start: 64391, Stop: 64170, Start Num: 4
Candidate Starts for Daffy_90:
(Start: 4 @64391 has 279 MA's), (5, 64382), (7, 64358), (9, 64325), (10, 64316),

Gene: Daka_93 Start: 64596, Stop: 64375, Start Num: 4
Candidate Starts for Daka_93:
(Start: 4 @64596 has 279 MA's), (5, 64587), (7, 64563), (9, 64530), (10, 64521),

Gene: Dati_88 Start: 64575, Stop: 64354, Start Num: 4
Candidate Starts for Dati_88:
(Start: 4 @64575 has 279 MA's), (5, 64566), (7, 64542), (9, 64509), (10, 64500),

Gene: DelRivs_89 Start: 64204, Stop: 63983, Start Num: 4
Candidate Starts for DelRivs_89:
(Start: 4 @64204 has 279 MA's), (5, 64195), (7, 64171), (9, 64138), (10, 64129),

Gene: Derpp_90 Start: 64314, Stop: 64093, Start Num: 4

Candidate Starts for Derpp_90:

(Start: 4 @64314 has 279 MA's), (5, 64305), (7, 64281), (9, 64248), (10, 64239),

Gene: Dice_90 Start: 64236, Stop: 64015, Start Num: 4

Candidate Starts for Dice_90:

(Start: 4 @64236 has 279 MA's), (5, 64227), (7, 64203), (9, 64170), (10, 64161),

Gene: Dingo_88 Start: 63957, Stop: 63736, Start Num: 4

Candidate Starts for Dingo_88:

(Start: 4 @63957 has 279 MA's), (5, 63948), (7, 63924), (9, 63891), (10, 63882),

Gene: Dione_89 Start: 63956, Stop: 63735, Start Num: 4

Candidate Starts for Dione_89:

(Start: 4 @63956 has 279 MA's), (5, 63947), (7, 63923), (9, 63890), (10, 63881),

Gene: DirtJuice_90 Start: 64696, Stop: 64475, Start Num: 4

Candidate Starts for DirtJuice_90:

(Start: 4 @64696 has 279 MA's), (5, 64687), (7, 64663), (9, 64630), (10, 64621),

Gene: Doddsville_88 Start: 64396, Stop: 64175, Start Num: 4

Candidate Starts for Doddsville_88:

(Start: 4 @64396 has 279 MA's), (5, 64387), (7, 64363), (9, 64330), (10, 64321),

Gene: DoesntMatter_88 Start: 64232, Stop: 64011, Start Num: 4

Candidate Starts for DoesntMatter_88:

(Start: 4 @64232 has 279 MA's), (5, 64223), (7, 64199), (9, 64166), (10, 64157),

Gene: DolOn_95 Start: 65682, Stop: 65461, Start Num: 4

Candidate Starts for DolOn_95:

(Start: 4 @65682 has 279 MA's), (5, 65673), (7, 65649), (9, 65616), (10, 65607),

Gene: DonSanchon_86 Start: 63914, Stop: 63693, Start Num: 4

Candidate Starts for DonSanchon_86:

(Start: 4 @63914 has 279 MA's), (5, 63905), (7, 63881), (9, 63848), (10, 63839),

Gene: DuchessDung_88 Start: 63912, Stop: 63691, Start Num: 4

Candidate Starts for DuchessDung_88:

(Start: 4 @63912 has 279 MA's), (5, 63903), (7, 63879), (9, 63846), (10, 63837),

Gene: Duggie_91 Start: 64538, Stop: 64317, Start Num: 4

Candidate Starts for Duggie_91:

(Start: 4 @64538 has 279 MA's), (5, 64529), (7, 64505), (9, 64472), (10, 64463),

Gene: Durga_93 Start: 65020, Stop: 64799, Start Num: 4

Candidate Starts for Durga_93:

(Start: 4 @65020 has 279 MA's), (5, 65011), (7, 64987), (9, 64954), (10, 64945),

Gene: ElvisPhasley_92 Start: 65562, Stop: 65341, Start Num: 4

Candidate Starts for ElvisPhasley_92:

(Start: 4 @65562 has 279 MA's), (5, 65553), (7, 65529), (9, 65496), (10, 65487),

Gene: Emiris_93 Start: 64926, Stop: 64705, Start Num: 4

Candidate Starts for Emiris_93:

(Start: 4 @64926 has 279 MA's), (5, 64917), (7, 64893), (9, 64860), (10, 64851),

Gene: EmpTee_90 Start: 64328, Stop: 64107, Start Num: 4

Candidate Starts for EmpTee_90:

(Start: 4 @64328 has 279 MA's), (5, 64319), (7, 64295), (9, 64262), (10, 64253),

Gene: Eremos_89 Start: 64618, Stop: 64397, Start Num: 4

Candidate Starts for Eremos_89:

(Start: 4 @64618 has 279 MA's), (5, 64609), (7, 64585), (9, 64552), (10, 64543),

Gene: Etaye_90 Start: 65104, Stop: 64883, Start Num: 4

Candidate Starts for Etaye_90:

(Start: 4 @65104 has 279 MA's), (5, 65095), (7, 65071), (9, 65038), (10, 65029),

Gene: Eugenia_93 Start: 65038, Stop: 64817, Start Num: 4

Candidate Starts for Eugenia_93:

(Start: 4 @65038 has 279 MA's), (5, 65029), (7, 65005), (9, 64972), (10, 64963),

Gene: Fang_92 Start: 64746, Stop: 64525, Start Num: 4

Candidate Starts for Fang_92:

(Start: 4 @64746 has 279 MA's), (5, 64737), (7, 64713), (9, 64680), (10, 64671),

Gene: FleetyMac_93 Start: 64428, Stop: 64207, Start Num: 4

Candidate Starts for FleetyMac_93:

(Start: 4 @64428 has 279 MA's), (5, 64419), (7, 64395), (9, 64362), (10, 64353),

Gene: FluffyNinja_92 Start: 64616, Stop: 64395, Start Num: 4

Candidate Starts for FluffyNinja_92:

(Start: 4 @64616 has 279 MA's), (5, 64607), (7, 64583), (9, 64550), (10, 64541),

Gene: ForDig_84 Start: 64336, Stop: 64064, Start Num: 6

Candidate Starts for ForDig_84:

(Start: 6 @64336 has 7 MA's), (9, 64294), (12, 64276), (14, 64264),

Gene: Fozzie_88 Start: 64942, Stop: 64721, Start Num: 4

Candidate Starts for Fozzie_88:

(Start: 4 @64942 has 279 MA's), (5, 64933), (7, 64909), (9, 64876), (10, 64867),

Gene: Frankicide_89 Start: 64442, Stop: 64221, Start Num: 4

Candidate Starts for Frankicide_89:

(Start: 4 @64442 has 279 MA's), (5, 64433), (7, 64409), (9, 64376), (10, 64367),

Gene: FremontTroll_89 Start: 64855, Stop: 64634, Start Num: 4

Candidate Starts for FremontTroll_89:

(Start: 4 @64855 has 279 MA's), (5, 64846), (7, 64822), (9, 64789), (10, 64780),

Gene: Freya_87 Start: 63934, Stop: 63713, Start Num: 4

Candidate Starts for Freya_87:

(Start: 4 @63934 has 279 MA's), (5, 63925), (7, 63901), (9, 63868), (10, 63859),

Gene: FriarPreacher_88 Start: 64315, Stop: 64094, Start Num: 4

Candidate Starts for FriarPreacher_88:

(Start: 4 @64315 has 279 MA's), (5, 64306), (7, 64282), (9, 64249), (10, 64240),

Gene: Fringe_95 Start: 65092, Stop: 64871, Start Num: 4
Candidate Starts for Fringe_95:
(Start: 4 @65092 has 279 MA's), (5, 65083), (7, 65059), (9, 65026), (10, 65017),

Gene: FugateOSU_91 Start: 65375, Stop: 65154, Start Num: 4
Candidate Starts for FugateOSU_91:
(Start: 4 @65375 has 279 MA's), (5, 65366), (7, 65342), (9, 65309), (10, 65300),

Gene: Funsized_83 Start: 66552, Stop: 66259, Start Num: 6
Candidate Starts for Funsized_83:
(1, 66690), (3, 66585), (Start: 6 @66552 has 7 MA's), (8, 66519), (12, 66492), (13, 66489), (20, 66387),
(25, 66303),

Gene: Gareth_91 Start: 64764, Stop: 64543, Start Num: 4
Candidate Starts for Gareth_91:
(Start: 4 @64764 has 279 MA's), (5, 64755), (7, 64731), (9, 64698), (10, 64689),

Gene: GeneCoco_91 Start: 64944, Stop: 64723, Start Num: 4
Candidate Starts for GeneCoco_91:
(Start: 4 @64944 has 279 MA's), (5, 64935), (7, 64911), (9, 64878), (10, 64869),

Gene: Giraffe_91 Start: 64768, Stop: 64547, Start Num: 4
Candidate Starts for Giraffe_91:
(Start: 4 @64768 has 279 MA's), (5, 64759), (7, 64735), (9, 64702), (10, 64693),

Gene: Gophee_90 Start: 64755, Stop: 64534, Start Num: 4
Candidate Starts for Gophee_90:
(Start: 4 @64755 has 279 MA's), (5, 64746), (7, 64722), (9, 64689), (10, 64680),

Gene: Grand2040_89 Start: 64733, Stop: 64512, Start Num: 4
Candidate Starts for Grand2040_89:
(Start: 4 @64733 has 279 MA's), (5, 64724), (7, 64700), (9, 64667), (10, 64658),

Gene: GreenChile_90 Start: 64428, Stop: 64207, Start Num: 4
Candidate Starts for GreenChile_90:
(Start: 4 @64428 has 279 MA's), (5, 64419), (7, 64395), (9, 64362), (10, 64353),

Gene: Gwennie1_90 Start: 64579, Stop: 64358, Start Num: 4
Candidate Starts for Gwennie1_90:
(Start: 4 @64579 has 279 MA's), (5, 64570), (7, 64546), (9, 64513), (10, 64504),

Gene: Gwilliam_91 Start: 65299, Stop: 65078, Start Num: 4
Candidate Starts for Gwilliam_91:
(Start: 4 @65299 has 279 MA's), (5, 65290), (7, 65266), (9, 65233), (10, 65224),

Gene: Gyarad_0090 Start: 64253, Stop: 64032, Start Num: 4
Candidate Starts for Gyarad_0090:
(Start: 4 @64253 has 279 MA's), (5, 64244), (7, 64220), (9, 64187), (10, 64178),

Gene: HSavage_89 Start: 64270, Stop: 64049, Start Num: 4
Candidate Starts for HSavage_89:
(Start: 4 @64270 has 279 MA's), (5, 64261), (7, 64237), (9, 64204), (10, 64195),

Gene: Haimas_88 Start: 64195, Stop: 63974, Start Num: 4

Candidate Starts for Haimas_88:

(Start: 4 @64195 has 279 MA's), (5, 64186), (7, 64162), (9, 64129), (10, 64120),

Gene: Haleema_90 Start: 64314, Stop: 64093, Start Num: 4

Candidate Starts for Haleema_90:

(Start: 4 @64314 has 279 MA's), (5, 64305), (7, 64281), (9, 64248), (10, 64239),

Gene: Hamish_88 Start: 64483, Stop: 64262, Start Num: 4

Candidate Starts for Hamish_88:

(Start: 4 @64483 has 279 MA's), (5, 64474), (7, 64450), (9, 64417), (10, 64408),

Gene: Happabalu_89 Start: 65409, Stop: 65188, Start Num: 4

Candidate Starts for Happabalu_89:

(Start: 4 @65409 has 279 MA's), (5, 65400), (7, 65376), (9, 65343), (10, 65334),

Gene: Hartsy_89 Start: 64432, Stop: 64211, Start Num: 4

Candidate Starts for Hartsy_89:

(Start: 4 @64432 has 279 MA's), (5, 64423), (7, 64399), (9, 64366), (10, 64357),

Gene: Harvey_88 Start: 64092, Stop: 63871, Start Num: 4

Candidate Starts for Harvey_88:

(Start: 4 @64092 has 279 MA's), (5, 64083), (7, 64059), (9, 64026), (10, 64017),

Gene: Hashim76_92 Start: 66668, Stop: 66417, Start Num: 6

Candidate Starts for Hashim76_92:

(Start: 6 @66668 has 7 MA's), (9, 66623), (14, 66593), (19, 66521), (22, 66464), (23, 66461),

Gene: Hekos_89 Start: 64107, Stop: 63886, Start Num: 4

Candidate Starts for Hekos_89:

(Start: 4 @64107 has 279 MA's), (5, 64098), (7, 64074), (9, 64041), (10, 64032),

Gene: Held_89 Start: 64213, Stop: 63992, Start Num: 4

Candidate Starts for Held_89:

(Start: 4 @64213 has 279 MA's), (5, 64204), (7, 64180), (9, 64147), (10, 64138),

Gene: HenryJackson_91 Start: 64932, Stop: 64711, Start Num: 4

Candidate Starts for HenryJackson_91:

(Start: 4 @64932 has 279 MA's), (5, 64923), (7, 64899), (9, 64866), (10, 64857),

Gene: Hertubise_90 Start: 64574, Stop: 64353, Start Num: 4

Candidate Starts for Hertubise_90:

(Start: 4 @64574 has 279 MA's), (5, 64565), (7, 64541), (9, 64508), (10, 64499),

Gene: Hetaeria_91 Start: 64581, Stop: 64360, Start Num: 4

Candidate Starts for Hetaeria_91:

(Start: 4 @64581 has 279 MA's), (5, 64572), (7, 64548), (9, 64515), (10, 64506),

Gene: HighStump_92 Start: 64719, Stop: 64498, Start Num: 4

Candidate Starts for HighStump_92:

(Start: 4 @64719 has 279 MA's), (5, 64710), (7, 64686), (9, 64653), (10, 64644),

Gene: Hocus_89 Start: 64233, Stop: 64012, Start Num: 4
Candidate Starts for Hocus_89:
(Start: 4 @64233 has 279 MA's), (5, 64224), (7, 64200), (9, 64167), (10, 64158),

Gene: HogWash_91 Start: 65246, Stop: 65025, Start Num: 4
Candidate Starts for HogWash_91:
(Start: 4 @65246 has 279 MA's), (5, 65237), (7, 65213), (9, 65180), (10, 65171),

Gene: Horchata_86 Start: 64410, Stop: 64189, Start Num: 4
Candidate Starts for Horchata_86:
(Start: 4 @64410 has 279 MA's), (5, 64401), (7, 64377), (9, 64344), (10, 64335),

Gene: Hosp_081 Start: 62319, Stop: 62089, Start Num: 9
Candidate Starts for Hosp_081:
(Start: 6 @62361 has 7 MA's), (9, 62319), (14, 62289), (16, 62268), (17, 62244), (19, 62232),

Gene: ImtiyazSitla_92 Start: 64738, Stop: 64517, Start Num: 4
Candidate Starts for ImtiyazSitla_92:
(Start: 4 @64738 has 279 MA's), (5, 64729), (7, 64705), (9, 64672), (10, 64663),

Gene: Inchworm_92 Start: 64606, Stop: 64385, Start Num: 4
Candidate Starts for Inchworm_92:
(Start: 4 @64606 has 279 MA's), (5, 64597), (7, 64573), (9, 64540), (10, 64531),

Gene: Inverness_89 Start: 64407, Stop: 64186, Start Num: 4
Candidate Starts for Inverness_89:
(Start: 4 @64407 has 279 MA's), (5, 64398), (7, 64374), (9, 64341), (10, 64332),

Gene: Iridessa_92 Start: 64331, Stop: 64110, Start Num: 4
Candidate Starts for Iridessa_92:
(Start: 4 @64331 has 279 MA's), (5, 64322), (7, 64298), (9, 64265), (10, 64256),

Gene: Iridoclysis_90 Start: 64497, Stop: 64276, Start Num: 4
Candidate Starts for Iridoclysis_90:
(Start: 4 @64497 has 279 MA's), (5, 64488), (7, 64464), (9, 64431), (10, 64422),

Gene: IsaacEli_93 Start: 64737, Stop: 64516, Start Num: 4
Candidate Starts for IsaacEli_93:
(Start: 4 @64737 has 279 MA's), (5, 64728), (7, 64704), (9, 64671), (10, 64662),

Gene: JDog_90 Start: 64767, Stop: 64546, Start Num: 4
Candidate Starts for JDog_90:
(Start: 4 @64767 has 279 MA's), (5, 64758), (7, 64734), (9, 64701), (10, 64692),

Gene: JacAttac_91 Start: 64211, Stop: 63990, Start Num: 4
Candidate Starts for JacAttac_91:
(Start: 4 @64211 has 279 MA's), (5, 64202), (7, 64178), (9, 64145), (10, 64136),

Gene: JakeO_92 Start: 64495, Stop: 64274, Start Num: 4
Candidate Starts for JakeO_92:
(Start: 4 @64495 has 279 MA's), (5, 64486), (7, 64462), (9, 64429), (10, 64420),

Gene: JangoPhett_89 Start: 64571, Stop: 64350, Start Num: 4

Candidate Starts for JangoPhett_89:

(Start: 4 @64571 has 279 MA's), (5, 64562), (7, 64538), (9, 64505), (10, 64496),

Gene: Jesabah_93 Start: 65333, Stop: 65112, Start Num: 4

Candidate Starts for Jesabah_93:

(Start: 4 @65333 has 279 MA's), (5, 65324), (7, 65300), (9, 65267), (10, 65258),

Gene: Jillium_92 Start: 64927, Stop: 64706, Start Num: 4

Candidate Starts for Jillium_92:

(Start: 4 @64927 has 279 MA's), (5, 64918), (7, 64894), (9, 64861), (10, 64852),

Gene: Jiminy_91 Start: 64431, Stop: 64210, Start Num: 4

Candidate Starts for Jiminy_91:

(Start: 4 @64431 has 279 MA's), (5, 64422), (7, 64398), (9, 64365), (10, 64356),

Gene: Jiraiya_92 Start: 64515, Stop: 64294, Start Num: 4

Candidate Starts for Jiraiya_92:

(Start: 4 @64515 has 279 MA's), (5, 64506), (7, 64482), (9, 64449), (10, 64440),

Gene: Jolie1_083 Start: 64388, Stop: 64116, Start Num: 6

Candidate Starts for Jolie1_083:

(Start: 6 @64388 has 7 MA's), (9, 64346), (14, 64316), (16, 64295), (17, 64271), (19, 64259),

Gene: KLucky39_89 Start: 64290, Stop: 64069, Start Num: 4

Candidate Starts for KLucky39_89:

(Start: 4 @64290 has 279 MA's), (5, 64281), (7, 64257), (9, 64224), (10, 64215),

Gene: Kahve_91 Start: 64930, Stop: 64709, Start Num: 4

Candidate Starts for Kahve_91:

(Start: 4 @64930 has 279 MA's), (5, 64921), (7, 64897), (9, 64864), (10, 64855),

Gene: Kailash_89 Start: 64630, Stop: 64409, Start Num: 4

Candidate Starts for Kailash_89:

(Start: 4 @64630 has 279 MA's), (5, 64621), (7, 64597), (9, 64564), (10, 64555),

Gene: Karn_91 Start: 64486, Stop: 64265, Start Num: 4

Candidate Starts for Karn_91:

(Start: 4 @64486 has 279 MA's), (5, 64477), (7, 64453), (9, 64420), (10, 64411),

Gene: Katniss_93 Start: 64346, Stop: 64125, Start Num: 4

Candidate Starts for Katniss_93:

(Start: 4 @64346 has 279 MA's), (5, 64337), (7, 64313), (9, 64280), (10, 64271),

Gene: KayaCho_82 Start: 64280, Stop: 64017, Start Num: 6

Candidate Starts for KayaCho_82:

(Start: 6 @64280 has 7 MA's), (9, 64238), (14, 64208), (21, 64103),

Gene: Keitherie_94 Start: 64988, Stop: 64767, Start Num: 4

Candidate Starts for Keitherie_94:

(Start: 4 @64988 has 279 MA's), (5, 64979), (7, 64955), (9, 64922), (10, 64913),

Gene: Khan1_91 Start: 64709, Stop: 64488, Start Num: 4

Candidate Starts for Khan1_91:

(Start: 4 @64709 has 279 MA's), (5, 64700), (7, 64676), (9, 64643), (10, 64634),

Gene: Kikipoo_93 Start: 64737, Stop: 64516, Start Num: 4

Candidate Starts for Kikipoo_93:

(Start: 4 @64737 has 279 MA's), (5, 64728), (7, 64704), (9, 64671), (10, 64662),

Gene: Kimbrough_92 Start: 64809, Stop: 64588, Start Num: 4

Candidate Starts for Kimbrough_92:

(Start: 4 @64809 has 279 MA's), (5, 64800), (7, 64776), (9, 64743), (10, 64734),

Gene: KingTut_82 Start: 60969, Stop: 60748, Start Num: 4

Candidate Starts for KingTut_82:

(Start: 4 @60969 has 279 MA's), (5, 60960), (7, 60936), (9, 60903), (10, 60894),

Gene: KingVeVeVe_89 Start: 63943, Stop: 63722, Start Num: 4

Candidate Starts for KingVeVeVe_89:

(Start: 4 @63943 has 279 MA's), (5, 63934), (7, 63910), (9, 63877), (10, 63868),

Gene: KlimbOn_90 Start: 64249, Stop: 64028, Start Num: 4

Candidate Starts for KlimbOn_90:

(Start: 4 @64249 has 279 MA's), (5, 64240), (7, 64216), (9, 64183), (10, 64174),

Gene: Kloppinator_91 Start: 64379, Stop: 64158, Start Num: 4

Candidate Starts for Kloppinator_91:

(Start: 4 @64379 has 279 MA's), (5, 64370), (7, 64346), (9, 64313), (10, 64304),

Gene: Kwadwo_90 Start: 64234, Stop: 64013, Start Num: 4

Candidate Starts for Kwadwo_90:

(Start: 4 @64234 has 279 MA's), (5, 64225), (7, 64201), (9, 64168), (10, 64159),

Gene: Kwksand96_92 Start: 64501, Stop: 64280, Start Num: 4

Candidate Starts for Kwksand96_92:

(Start: 4 @64501 has 279 MA's), (5, 64492), (7, 64468), (9, 64435), (10, 64426),

Gene: Labeouficaum_91 Start: 64314, Stop: 64093, Start Num: 4

Candidate Starts for Labeouficaum_91:

(Start: 4 @64314 has 279 MA's), (5, 64305), (7, 64281), (9, 64248), (10, 64239),

Gene: Larson_93 Start: 64578, Stop: 64357, Start Num: 4

Candidate Starts for Larson_93:

(Start: 4 @64578 has 279 MA's), (5, 64569), (7, 64545), (9, 64512), (10, 64503),

Gene: LasagnaCat_92 Start: 64616, Stop: 64395, Start Num: 4

Candidate Starts for LasagnaCat_92:

(Start: 4 @64616 has 279 MA's), (5, 64607), (7, 64583), (9, 64550), (10, 64541),

Gene: Lasso_90 Start: 64475, Stop: 64254, Start Num: 4

Candidate Starts for Lasso_90:

(Start: 4 @64475 has 279 MA's), (5, 64466), (7, 64442), (9, 64409), (10, 64400),

Gene: LeeLot_89 Start: 64819, Stop: 64598, Start Num: 4

Candidate Starts for LeeLot_89:

(Start: 4 @64819 has 279 MA's), (5, 64810), (7, 64786), (9, 64753), (10, 64744),

Gene: Lego3393_89 Start: 64936, Stop: 64715, Start Num: 4
Candidate Starts for Lego3393_89:
(Start: 4 @64936 has 279 MA's), (5, 64927), (7, 64903), (9, 64870), (10, 64861),

Gene: Legolas_92 Start: 64563, Stop: 64342, Start Num: 4
Candidate Starts for Legolas_92:
(Start: 4 @64563 has 279 MA's), (5, 64554), (7, 64530), (9, 64497), (10, 64488),

Gene: Lehmann_92 Start: 64826, Stop: 64605, Start Num: 4
Candidate Starts for Lehmann_92:
(Start: 4 @64826 has 279 MA's), (5, 64817), (7, 64793), (9, 64760), (10, 64751),

Gene: LeiMonet_94 Start: 64697, Stop: 64476, Start Num: 4
Candidate Starts for LeiMonet_94:
(Start: 4 @64697 has 279 MA's), (5, 64688), (7, 64664), (9, 64631), (10, 64622),

Gene: LemonSlice_91 Start: 64222, Stop: 64001, Start Num: 4
Candidate Starts for LemonSlice_91:
(Start: 4 @64222 has 279 MA's), (5, 64213), (7, 64189), (9, 64156), (10, 64147),

Gene: Leopard_100 Start: 66137, Stop: 66388, Start Num: 4
Candidate Starts for Leopard_100:
(Start: 2 @66089 has 1 MA's), (Start: 4 @66137 has 279 MA's), (5, 66146), (9, 66203), (11, 66215),
(14, 66233), (15, 66245),

Gene: LilMcDreamy_79 Start: 63285, Stop: 63025, Start Num: 6
Candidate Starts for LilMcDreamy_79:
(Start: 6 @63285 has 7 MA's), (14, 63210),

Gene: LittleMinkey_98 Start: 67143, Stop: 66892, Start Num: 6
Candidate Starts for LittleMinkey_98:
(Start: 6 @67143 has 7 MA's), (9, 67098), (14, 67068), (22, 66939), (23, 66936),

Gene: Longacauda_92 Start: 64716, Stop: 64495, Start Num: 4
Candidate Starts for Longacauda_92:
(Start: 4 @64716 has 279 MA's), (5, 64707), (7, 64683), (9, 64650), (10, 64641),

Gene: LostAndPhound_90 Start: 64764, Stop: 64543, Start Num: 4
Candidate Starts for LostAndPhound_90:
(Start: 4 @64764 has 279 MA's), (5, 64755), (7, 64731), (9, 64698), (10, 64689),

Gene: LuckyMarjie_88 Start: 63974, Stop: 63753, Start Num: 4
Candidate Starts for LuckyMarjie_88:
(Start: 4 @63974 has 279 MA's), (5, 63965), (7, 63941), (9, 63908), (10, 63899),

Gene: Lulumae_86 Start: 63955, Stop: 63734, Start Num: 4
Candidate Starts for Lulumae_86:
(Start: 4 @63955 has 279 MA's), (5, 63946), (7, 63922), (9, 63889), (10, 63880),

Gene: Lulwa_88 Start: 63588, Stop: 63367, Start Num: 4
Candidate Starts for Lulwa_88:
(Start: 4 @63588 has 279 MA's), (5, 63579), (7, 63555), (9, 63522), (10, 63513),

Gene: Lumine_92 Start: 64413, Stop: 64192, Start Num: 4

Candidate Starts for Lumine_92:

(Start: 4 @64413 has 279 MA's), (5, 64404), (7, 64380), (9, 64347), (10, 64338),

Gene: MRabcd_91 Start: 64690, Stop: 64469, Start Num: 4

Candidate Starts for MRabcd_91:

(Start: 4 @64690 has 279 MA's), (5, 64681), (7, 64657), (9, 64624), (10, 64615),

Gene: Mag7_89 Start: 64174, Stop: 63953, Start Num: 4

Candidate Starts for Mag7_89:

(Start: 4 @64174 has 279 MA's), (5, 64165), (7, 64141), (9, 64108), (10, 64099),

Gene: Magic8_90 Start: 64542, Stop: 64321, Start Num: 4

Candidate Starts for Magic8_90:

(Start: 4 @64542 has 279 MA's), (5, 64533), (7, 64509), (9, 64476), (10, 64467),

Gene: Mana_88 Start: 64378, Stop: 64157, Start Num: 4

Candidate Starts for Mana_88:

(Start: 4 @64378 has 279 MA's), (5, 64369), (7, 64345), (9, 64312), (10, 64303),

Gene: Manad_90 Start: 64488, Stop: 64267, Start Num: 4

Candidate Starts for Manad_90:

(Start: 4 @64488 has 279 MA's), (5, 64479), (7, 64455), (9, 64422), (10, 64413),

Gene: Maru_91 Start: 64826, Stop: 64605, Start Num: 4

Candidate Starts for Maru_91:

(Start: 4 @64826 has 279 MA's), (5, 64817), (7, 64793), (9, 64760), (10, 64751),

Gene: Maskar_92 Start: 64738, Stop: 64517, Start Num: 4

Candidate Starts for Maskar_92:

(Start: 4 @64738 has 279 MA's), (5, 64729), (7, 64705), (9, 64672), (10, 64663),

Gene: Matalotodo_89 Start: 65222, Stop: 65001, Start Num: 4

Candidate Starts for Matalotodo_89:

(Start: 4 @65222 has 279 MA's), (5, 65213), (7, 65189), (9, 65156), (10, 65147),

Gene: Mcshane_90 Start: 64236, Stop: 64015, Start Num: 4

Candidate Starts for Mcshane_90:

(Start: 4 @64236 has 279 MA's), (5, 64227), (7, 64203), (9, 64170), (10, 64161),

Gene: Mecca_91 Start: 64790, Stop: 64569, Start Num: 4

Candidate Starts for Mecca_91:

(Start: 4 @64790 has 279 MA's), (5, 64781), (7, 64757), (9, 64724), (10, 64715),

Gene: Megamind20_91 Start: 64200, Stop: 63979, Start Num: 4

Candidate Starts for Megamind20_91:

(Start: 4 @64200 has 279 MA's), (5, 64191), (7, 64167), (9, 64134), (10, 64125),

Gene: Megatron_92 Start: 64908, Stop: 64687, Start Num: 4

Candidate Starts for Megatron_92:

(Start: 4 @64908 has 279 MA's), (5, 64899), (7, 64875), (9, 64842), (10, 64833),

Gene: Melc17_88 Start: 64858, Stop: 64637, Start Num: 4
Candidate Starts for Melc17_88:
(Start: 4 @64858 has 279 MA's), (5, 64849), (7, 64825), (9, 64792), (10, 64783),

Gene: MelsMeow_90 Start: 64498, Stop: 64277, Start Num: 4
Candidate Starts for MelsMeow_90:
(Start: 4 @64498 has 279 MA's), (5, 64489), (7, 64465), (9, 64432), (10, 64423),

Gene: Mesh1_92 Start: 64951, Stop: 64730, Start Num: 4
Candidate Starts for Mesh1_92:
(Start: 4 @64951 has 279 MA's), (5, 64942), (7, 64918), (9, 64885), (10, 64876),

Gene: Mesmerelda_90 Start: 64789, Stop: 64568, Start Num: 4
Candidate Starts for Mesmerelda_90:
(Start: 4 @64789 has 279 MA's), (5, 64780), (7, 64756), (9, 64723), (10, 64714),

Gene: MichaelPhcott_89 Start: 64171, Stop: 63950, Start Num: 4
Candidate Starts for MichaelPhcott_89:
(Start: 4 @64171 has 279 MA's), (5, 64162), (7, 64138), (9, 64105), (10, 64096),

Gene: Mikota_86 Start: 63942, Stop: 63721, Start Num: 4
Candidate Starts for Mikota_86:
(Start: 4 @63942 has 279 MA's), (5, 63933), (7, 63909), (9, 63876), (10, 63867),

Gene: MiniBoss_87 Start: 63542, Stop: 63321, Start Num: 4
Candidate Starts for MiniBoss_87:
(Start: 4 @63542 has 279 MA's), (5, 63533), (7, 63509), (9, 63476), (10, 63467),

Gene: MitKao_91 Start: 64392, Stop: 64171, Start Num: 4
Candidate Starts for MitKao_91:
(Start: 4 @64392 has 279 MA's), (5, 64383), (7, 64359), (9, 64326), (10, 64317),

Gene: Morgushi_88 Start: 64206, Stop: 63985, Start Num: 4
Candidate Starts for Morgushi_88:
(Start: 4 @64206 has 279 MA's), (5, 64197), (7, 64173), (9, 64140), (10, 64131),

Gene: Morty_91 Start: 64778, Stop: 64557, Start Num: 4
Candidate Starts for Morty_91:
(Start: 4 @64778 has 279 MA's), (5, 64769), (7, 64745), (9, 64712), (10, 64703),

Gene: Mosaic_88 Start: 64388, Stop: 64167, Start Num: 4
Candidate Starts for Mosaic_88:
(Start: 4 @64388 has 279 MA's), (5, 64379), (7, 64355), (9, 64322), (10, 64313),

Gene: MrPhizzler_94 Start: 64686, Stop: 64465, Start Num: 4
Candidate Starts for MrPhizzler_94:
(Start: 4 @64686 has 279 MA's), (5, 64677), (9, 64620), (10, 64611),

Gene: Mulan_90 Start: 64420, Stop: 64199, Start Num: 4
Candidate Starts for Mulan_90:
(Start: 4 @64420 has 279 MA's), (5, 64411), (7, 64387), (9, 64354), (10, 64345),

Gene: Murdoc_87 Start: 64499, Stop: 64278, Start Num: 4

Candidate Starts for Murdoc_87:

(Start: 4 @64499 has 279 MA's), (5, 64490), (7, 64466), (9, 64433), (10, 64424),

Gene: Mutante_92 Start: 64393, Stop: 64172, Start Num: 4

Candidate Starts for Mutante_92:

(Start: 4 @64393 has 279 MA's), (5, 64384), (7, 64360), (9, 64327), (10, 64318),

Gene: Nacho_0093 Start: 65464, Stop: 65243, Start Num: 4

Candidate Starts for Nacho_0093:

(Start: 4 @65464 has 279 MA's), (5, 65455), (7, 65431), (9, 65398), (10, 65389),

Gene: Nathan_91 Start: 64919, Stop: 64698, Start Num: 4

Candidate Starts for Nathan_91:

(Start: 4 @64919 has 279 MA's), (5, 64910), (7, 64886), (9, 64853), (10, 64844),

Gene: Newman_87 Start: 64741, Stop: 64520, Start Num: 4

Candidate Starts for Newman_87:

(Start: 4 @64741 has 279 MA's), (5, 64732), (7, 64708), (9, 64675), (10, 64666),

Gene: Nicole21_92 Start: 64526, Stop: 64305, Start Num: 4

Candidate Starts for Nicole21_92:

(Start: 4 @64526 has 279 MA's), (5, 64517), (7, 64493), (9, 64460), (10, 64451),

Gene: Numberten_90 Start: 64508, Stop: 64287, Start Num: 4

Candidate Starts for Numberten_90:

(Start: 4 @64508 has 279 MA's), (5, 64499), (7, 64475), (9, 64442), (10, 64433),

Gene: Nyala_90 Start: 64242, Stop: 64021, Start Num: 4

Candidate Starts for Nyala_90:

(Start: 4 @64242 has 279 MA's), (5, 64233), (7, 64209), (9, 64176), (10, 64167),

Gene: OSmaximus_92 Start: 65073, Stop: 64852, Start Num: 4

Candidate Starts for OSmaximus_92:

(Start: 4 @65073 has 279 MA's), (5, 65064), (7, 65040), (9, 65007), (10, 64998),

Gene: Olak_90 Start: 64406, Stop: 64185, Start Num: 4

Candidate Starts for Olak_90:

(Start: 4 @64406 has 279 MA's), (5, 64397), (7, 64373), (9, 64340), (10, 64331),

Gene: Oline_90 Start: 64397, Stop: 64176, Start Num: 4

Candidate Starts for Oline_90:

(Start: 4 @64397 has 279 MA's), (5, 64388), (7, 64364), (9, 64331), (10, 64322),

Gene: Olive_87 Start: 64638, Stop: 64417, Start Num: 4

Candidate Starts for Olive_87:

(Start: 4 @64638 has 279 MA's), (5, 64629), (7, 64605), (9, 64572), (10, 64563),

Gene: OliverWalter_90 Start: 64693, Stop: 64472, Start Num: 4

Candidate Starts for OliverWalter_90:

(Start: 4 @64693 has 279 MA's), (5, 64684), (7, 64660), (9, 64627), (10, 64618),

Gene: Omniscient_92 Start: 65096, Stop: 64875, Start Num: 4

Candidate Starts for Omniscient_92:

(Start: 4 @65096 has 279 MA's), (5, 65087), (7, 65063), (9, 65030), (10, 65021),

Gene: OneBrain_93 Start: 64657, Stop: 64436, Start Num: 4

Candidate Starts for OneBrain_93:

(Start: 4 @64657 has 279 MA's), (5, 64648), (7, 64624), (9, 64591), (10, 64582),

Gene: Onyinye_101 Start: 65950, Stop: 66249, Start Num: 2

Candidate Starts for Onyinye_101:

(Start: 2 @65950 has 1 MA's), (Start: 4 @65998 has 279 MA's), (5, 66007), (9, 66064), (11, 66076), (14, 66094), (15, 66106),

Gene: Oosterbaan_91 Start: 64633, Stop: 64412, Start Num: 4

Candidate Starts for Oosterbaan_91:

(Start: 4 @64633 has 279 MA's), (5, 64624), (7, 64600), (9, 64567), (10, 64558),

Gene: Orfeu_90 Start: 64756, Stop: 64535, Start Num: 4

Candidate Starts for Orfeu_90:

(Start: 4 @64756 has 279 MA's), (5, 64747), (7, 64723), (9, 64690), (10, 64681),

Gene: Orion_89 Start: 64326, Stop: 64105, Start Num: 4

Candidate Starts for Orion_89:

(Start: 4 @64326 has 279 MA's), (5, 64317), (7, 64293), (9, 64260), (10, 64251),

Gene: Orwigg_90 Start: 64162, Stop: 63941, Start Num: 4

Candidate Starts for Orwigg_90:

(Start: 4 @64162 has 279 MA's), (5, 64153), (7, 64129), (9, 64096), (10, 64087),

Gene: PG1_89 Start: 64898, Stop: 64677, Start Num: 4

Candidate Starts for PG1_89:

(Start: 4 @64898 has 279 MA's), (5, 64889), (7, 64865), (9, 64832), (10, 64823),

Gene: Pacifista_90 Start: 64247, Stop: 64026, Start Num: 4

Candidate Starts for Pacifista_90:

(Start: 4 @64247 has 279 MA's), (5, 64238), (7, 64214), (9, 64181), (10, 64172),

Gene: Phamished_90 Start: 64414, Stop: 64193, Start Num: 4

Candidate Starts for Phamished_90:

(Start: 4 @64414 has 279 MA's), (5, 64405), (7, 64381), (9, 64348), (10, 64339),

Gene: Phareon_88 Start: 63939, Stop: 63718, Start Num: 4

Candidate Starts for Phareon_88:

(Start: 4 @63939 has 279 MA's), (5, 63930), (7, 63906), (9, 63873), (10, 63864),

Gene: PhatCats2014_90 Start: 64898, Stop: 64677, Start Num: 4

Candidate Starts for PhatCats2014_90:

(Start: 4 @64898 has 279 MA's), (5, 64889), (7, 64865), (9, 64832), (10, 64823),

Gene: PhatLouie_93 Start: 64772, Stop: 64551, Start Num: 4

Candidate Starts for PhatLouie_93:

(Start: 4 @64772 has 279 MA's), (5, 64763), (7, 64739), (9, 64706), (10, 64697),

Gene: PhenghisKhan_91 Start: 64403, Stop: 64182, Start Num: 4

Candidate Starts for PhenghisKhan_91:

(Start: 4 @64403 has 279 MA's), (5, 64394), (7, 64370), (9, 64337), (10, 64328),

Gene: Pherdinand_92 Start: 64618, Stop: 64397, Start Num: 4

Candidate Starts for Pherdinand_92:

(Start: 4 @64618 has 279 MA's), (5, 64609), (7, 64585), (9, 64552), (10, 64543),

Gene: Phergie_91 Start: 64392, Stop: 64171, Start Num: 4

Candidate Starts for Phergie_91:

(Start: 4 @64392 has 279 MA's), (5, 64383), (7, 64359), (9, 64326), (10, 64317),

Gene: Phipps_89 Start: 64470, Stop: 64249, Start Num: 4

Candidate Starts for Phipps_89:

(Start: 4 @64470 has 279 MA's), (5, 64461), (7, 64437), (9, 64404), (10, 64395),

Gene: Phleuron_88 Start: 64204, Stop: 63983, Start Num: 4

Candidate Starts for Phleuron_88:

(Start: 4 @64204 has 279 MA's), (5, 64195), (7, 64171), (9, 64138), (10, 64129),

Gene: PhrankReynolds_89 Start: 64397, Stop: 64176, Start Num: 4

Candidate Starts for PhrankReynolds_89:

(Start: 4 @64397 has 279 MA's), (5, 64388), (7, 64364), (9, 64331), (10, 64322),

Gene: PhrodoBaggins_93 Start: 64773, Stop: 64552, Start Num: 4

Candidate Starts for PhrodoBaggins_93:

(Start: 4 @64773 has 279 MA's), (5, 64764), (7, 64740), (9, 64707), (10, 64698),

Gene: Phunky_88 Start: 64276, Stop: 64055, Start Num: 4

Candidate Starts for Phunky_88:

(Start: 4 @64276 has 279 MA's), (5, 64267), (7, 64243), (9, 64210), (10, 64201),

Gene: Piglet_0090 Start: 64892, Stop: 64671, Start Num: 4

Candidate Starts for Piglet_0090:

(Start: 4 @64892 has 279 MA's), (5, 64883), (7, 64859), (9, 64826), (10, 64817),

Gene: PinheadLarry_90 Start: 64543, Stop: 64322, Start Num: 4

Candidate Starts for PinheadLarry_90:

(Start: 4 @64543 has 279 MA's), (5, 64534), (7, 64510), (9, 64477), (10, 64468),

Gene: Pinkman_90 Start: 64616, Stop: 64395, Start Num: 4

Candidate Starts for Pinkman_90:

(Start: 4 @64616 has 279 MA's), (5, 64607), (7, 64583), (9, 64550), (10, 64541),

Gene: Pipsqueak_88 Start: 64229, Stop: 64008, Start Num: 4

Candidate Starts for Pipsqueak_88:

(Start: 4 @64229 has 279 MA's), (5, 64220), (7, 64196), (9, 64163), (10, 64154),

Gene: Placalicious_89 Start: 65262, Stop: 65041, Start Num: 4

Candidate Starts for Placalicious_89:

(Start: 4 @65262 has 279 MA's), (5, 65253), (7, 65229), (9, 65196), (10, 65187),

Gene: Plata_89 Start: 64484, Stop: 64263, Start Num: 4

Candidate Starts for Plata_89:

(Start: 4 @64484 has 279 MA's), (5, 64475), (7, 64451), (9, 64418), (10, 64409),

Gene: Plmatters_88 Start: 64217, Stop: 63996, Start Num: 4
Candidate Starts for Plmatters_88:
(Start: 4 @64217 has 279 MA's), (5, 64208), (7, 64184), (9, 64151), (10, 64142),

Gene: Podrick_89 Start: 64305, Stop: 64084, Start Num: 4
Candidate Starts for Podrick_89:
(Start: 4 @64305 has 279 MA's), (5, 64296), (7, 64272), (9, 64239), (10, 64230),

Gene: Pops_88 Start: 64407, Stop: 64186, Start Num: 4
Candidate Starts for Pops_88:
(Start: 4 @64407 has 279 MA's), (5, 64398), (7, 64374), (9, 64341), (10, 64332),

Gene: Potter_85 Start: 64226, Stop: 64005, Start Num: 4
Candidate Starts for Potter_85:
(Start: 4 @64226 has 279 MA's), (5, 64217), (7, 64193), (9, 64160), (10, 64151),

Gene: Prickles_92 Start: 64595, Stop: 64374, Start Num: 4
Candidate Starts for Prickles_92:
(Start: 4 @64595 has 279 MA's), (5, 64586), (7, 64562), (9, 64529), (10, 64520),

Gene: ProfessorX_89 Start: 64263, Stop: 64042, Start Num: 4
Candidate Starts for ProfessorX_89:
(Start: 4 @64263 has 279 MA's), (5, 64254), (7, 64230), (9, 64197), (10, 64188),

Gene: Puhltonio_87 Start: 64500, Stop: 64279, Start Num: 4
Candidate Starts for Puhltonio_87:
(Start: 4 @64500 has 279 MA's), (5, 64491), (7, 64467), (9, 64434), (10, 64425),

Gene: QueenBeane_91 Start: 64549, Stop: 64328, Start Num: 4
Candidate Starts for QueenBeane_91:
(Start: 4 @64549 has 279 MA's), (5, 64540), (7, 64516), (9, 64483), (10, 64474),

Gene: Quisquilliae_93 Start: 64560, Stop: 64339, Start Num: 4
Candidate Starts for Quisquilliae_93:
(Start: 4 @64560 has 279 MA's), (5, 64551), (7, 64527), (9, 64494), (10, 64485),

Gene: RedMaple_90 Start: 65163, Stop: 64942, Start Num: 4
Candidate Starts for RedMaple_90:
(Start: 4 @65163 has 279 MA's), (5, 65154), (7, 65130), (9, 65097), (10, 65088),

Gene: RedRaider89_90 Start: 64849, Stop: 64628, Start Num: 4
Candidate Starts for RedRaider89_90:
(Start: 4 @64849 has 279 MA's), (5, 64840), (7, 64816), (9, 64783), (10, 64774),

Gene: Ricotta_91 Start: 64245, Stop: 64024, Start Num: 4
Candidate Starts for Ricotta_91:
(Start: 4 @64245 has 279 MA's), (5, 64236), (7, 64212), (9, 64179), (10, 64170),

Gene: Riggan_92 Start: 64730, Stop: 64509, Start Num: 4
Candidate Starts for Riggan_92:
(Start: 4 @64730 has 279 MA's), (5, 64721), (7, 64697), (9, 64664), (10, 64655),

Gene: Rimu_89 Start: 64709, Stop: 64488, Start Num: 4
Candidate Starts for Rimu_89:
(Start: 4 @64709 has 279 MA's), (5, 64700), (9, 64643), (10, 64634),

Gene: Robyn_93 Start: 64997, Stop: 64755, Start Num: 4
Candidate Starts for Robyn_93:
(Start: 4 @64997 has 279 MA's), (5, 64988), (7, 64964), (9, 64931), (10, 64922), (18, 64850),

Gene: Roliet_88 Start: 63590, Stop: 63369, Start Num: 4
Candidate Starts for Roliet_88:
(Start: 4 @63590 has 279 MA's), (5, 63581), (7, 63557), (9, 63524), (10, 63515),

Gene: Roscoe_90 Start: 64850, Stop: 64629, Start Num: 4
Candidate Starts for Roscoe_90:
(Start: 4 @64850 has 279 MA's), (5, 64841), (7, 64817), (9, 64784), (10, 64775),

Gene: Roy17_88 Start: 63955, Stop: 63734, Start Num: 4
Candidate Starts for Roy17_88:
(Start: 4 @63955 has 279 MA's), (5, 63946), (7, 63922), (9, 63889), (10, 63880),

Gene: SDcharge11_90 Start: 63883, Stop: 63662, Start Num: 4
Candidate Starts for SDcharge11_90:
(Start: 4 @63883 has 279 MA's), (5, 63874), (7, 63850), (9, 63817), (10, 63808),

Gene: Samaymay_91 Start: 64549, Stop: 64328, Start Num: 4
Candidate Starts for Samaymay_91:
(Start: 4 @64549 has 279 MA's), (5, 64540), (7, 64516), (9, 64483), (10, 64474),

Gene: SassyCat97_89 Start: 64217, Stop: 63996, Start Num: 4
Candidate Starts for SassyCat97_89:
(Start: 4 @64217 has 279 MA's), (5, 64208), (7, 64184), (9, 64151), (10, 64142),

Gene: Schueller_89 Start: 64491, Stop: 64270, Start Num: 4
Candidate Starts for Schueller_89:
(Start: 4 @64491 has 279 MA's), (5, 64482), (7, 64458), (9, 64425), (10, 64416),

Gene: Scoot17C_91 Start: 64330, Stop: 64109, Start Num: 4
Candidate Starts for Scoot17C_91:
(Start: 4 @64330 has 279 MA's), (5, 64321), (7, 64297), (9, 64264), (10, 64255),

Gene: Scrick_90 Start: 64231, Stop: 64010, Start Num: 4
Candidate Starts for Scrick_90:
(Start: 4 @64231 has 279 MA's), (5, 64222), (7, 64198), (9, 64165), (10, 64156),

Gene: Selr12_92 Start: 64272, Stop: 64051, Start Num: 4
Candidate Starts for Selr12_92:
(Start: 4 @64272 has 279 MA's), (5, 64263), (7, 64239), (9, 64206), (10, 64197),

Gene: Serendipity_90 Start: 64703, Stop: 64482, Start Num: 4
Candidate Starts for Serendipity_90:
(Start: 4 @64703 has 279 MA's), (5, 64694), (7, 64670), (9, 64637), (10, 64628),

Gene: Serpentine_0092 Start: 64784, Stop: 64563, Start Num: 4

Candidate Starts for Serpentine_0092:

(Start: 4 @64784 has 279 MA's), (5, 64775), (7, 64751), (9, 64718), (10, 64709),

Gene: ShadowBud_92 Start: 64557, Stop: 64336, Start Num: 4

Candidate Starts for ShadowBud_92:

(Start: 4 @64557 has 279 MA's), (5, 64548), (7, 64524), (9, 64491), (10, 64482),

Gene: Sheila_85 Start: 63796, Stop: 63575, Start Num: 4

Candidate Starts for Sheila_85:

(Start: 4 @63796 has 279 MA's), (5, 63787), (7, 63763), (9, 63730), (10, 63721),

Gene: ShiVal_89 Start: 64254, Stop: 64033, Start Num: 4

Candidate Starts for ShiVal_89:

(Start: 4 @64254 has 279 MA's), (5, 64245), (7, 64221), (9, 64188), (10, 64179),

Gene: Sigman_90 Start: 64211, Stop: 63990, Start Num: 4

Candidate Starts for Sigman_90:

(Start: 4 @64211 has 279 MA's), (5, 64202), (7, 64178), (9, 64145), (10, 64136),

Gene: SilverBell_92 Start: 64664, Stop: 64443, Start Num: 4

Candidate Starts for SilverBell_92:

(Start: 4 @64664 has 279 MA's), (5, 64655), (7, 64631), (9, 64598), (10, 64589),

Gene: Simielle_90 Start: 64196, Stop: 63975, Start Num: 4

Candidate Starts for Simielle_90:

(Start: 4 @64196 has 279 MA's), (5, 64187), (7, 64163), (9, 64130), (10, 64121),

Gene: SirBeauregard_92 Start: 64777, Stop: 64556, Start Num: 4

Candidate Starts for SirBeauregard_92:

(Start: 4 @64777 has 279 MA's), (5, 64768), (7, 64744), (9, 64711), (10, 64702),

Gene: Skippy_91 Start: 64625, Stop: 64404, Start Num: 4

Candidate Starts for Skippy_91:

(Start: 4 @64625 has 279 MA's), (5, 64616), (7, 64592), (9, 64559), (10, 64550),

Gene: Slatt_91 Start: 64512, Stop: 64291, Start Num: 4

Candidate Starts for Slatt_91:

(Start: 4 @64512 has 279 MA's), (5, 64503), (7, 64479), (9, 64446), (10, 64437),

Gene: Soile_92 Start: 64750, Stop: 64529, Start Num: 4

Candidate Starts for Soile_92:

(Start: 4 @64750 has 279 MA's), (5, 64741), (7, 64717), (9, 64684), (10, 64675),

Gene: Solosis_89 Start: 64218, Stop: 63997, Start Num: 4

Candidate Starts for Solosis_89:

(Start: 4 @64218 has 279 MA's), (5, 64209), (7, 64185), (9, 64152), (10, 64143),

Gene: Sophia_89 Start: 64206, Stop: 63985, Start Num: 4

Candidate Starts for Sophia_89:

(Start: 4 @64206 has 279 MA's), (5, 64197), (7, 64173), (9, 64140), (10, 64131),

Gene: Soto_88 Start: 63923, Stop: 63702, Start Num: 4

Candidate Starts for Soto_88:

(Start: 4 @63923 has 279 MA's), (5, 63914), (7, 63890), (9, 63857), (10, 63848),

Gene: Spartan300_90 Start: 64468, Stop: 64247, Start Num: 4

Candidate Starts for Spartan300_90:

(Start: 4 @64468 has 279 MA's), (5, 64459), (7, 64435), (9, 64402), (10, 64393),

Gene: Squid_90 Start: 64497, Stop: 64276, Start Num: 4

Candidate Starts for Squid_90:

(Start: 4 @64497 has 279 MA's), (5, 64488), (7, 64464), (9, 64431), (10, 64422),

Gene: Squiggle_90 Start: 64225, Stop: 64004, Start Num: 4

Candidate Starts for Squiggle_90:

(Start: 4 @64225 has 279 MA's), (5, 64216), (7, 64192), (9, 64159), (10, 64150),

Gene: Struggle_91 Start: 64323, Stop: 64102, Start Num: 4

Candidate Starts for Struggle_91:

(Start: 4 @64323 has 279 MA's), (5, 64314), (7, 64290), (9, 64257), (10, 64248),

Gene: Surely_91 Start: 64788, Stop: 64567, Start Num: 4

Candidate Starts for Surely_91:

(Start: 4 @64788 has 279 MA's), (5, 64779), (7, 64755), (9, 64722), (10, 64713),

Gene: Swiphy_93 Start: 64772, Stop: 64551, Start Num: 4

Candidate Starts for Swiphy_93:

(Start: 4 @64772 has 279 MA's), (5, 64763), (7, 64739), (9, 64706), (10, 64697),

Gene: Swish_92 Start: 64634, Stop: 64413, Start Num: 4

Candidate Starts for Swish_92:

(Start: 4 @64634 has 279 MA's), (5, 64625), (7, 64601), (9, 64568), (10, 64559),

Gene: TallGrassMM_90 Start: 64283, Stop: 64062, Start Num: 4

Candidate Starts for TallGrassMM_90:

(Start: 4 @64283 has 279 MA's), (5, 64274), (7, 64250), (9, 64217), (10, 64208),

Gene: Telesworld_89 Start: 64360, Stop: 64139, Start Num: 4

Candidate Starts for Telesworld_89:

(Start: 4 @64360 has 279 MA's), (5, 64351), (7, 64327), (9, 64294), (10, 64285),

Gene: Thora_89 Start: 64737, Stop: 64516, Start Num: 4

Candidate Starts for Thora_89:

(Start: 4 @64737 has 279 MA's), (5, 64728), (7, 64704), (9, 64671), (10, 64662),

Gene: ThreeOh3D2_92 Start: 64891, Stop: 64670, Start Num: 4

Candidate Starts for ThreeOh3D2_92:

(Start: 4 @64891 has 279 MA's), (5, 64882), (7, 64858), (9, 64825), (10, 64816),

Gene: Thunderbird_91 Start: 64480, Stop: 64259, Start Num: 4

Candidate Starts for Thunderbird_91:

(Start: 4 @64480 has 279 MA's), (5, 64471), (7, 64447), (9, 64414), (10, 64405),

Gene: Timmi_89 Start: 64254, Stop: 64033, Start Num: 4

Candidate Starts for Timmi_89:

(Start: 4 @64254 has 279 MA's), (5, 64245), (7, 64221), (9, 64188), (10, 64179),

Gene: TomBombadil_91 Start: 64781, Stop: 64560, Start Num: 4
Candidate Starts for TomBombadil_91:
(Start: 4 @64781 has 279 MA's), (5, 64772), (7, 64748), (9, 64715), (10, 64706),

Gene: Tomlarah_91 Start: 65087, Stop: 64866, Start Num: 4
Candidate Starts for Tomlarah_91:
(Start: 4 @65087 has 279 MA's), (5, 65078), (7, 65054), (9, 65021), (10, 65012),

Gene: Toni_90 Start: 64683, Stop: 64462, Start Num: 4
Candidate Starts for Toni_90:
(Start: 4 @64683 has 279 MA's), (5, 64674), (7, 64650), (9, 64617), (10, 64608),

Gene: TooFast2Furius_92 Start: 64645, Stop: 64424, Start Num: 4
Candidate Starts for TooFast2Furius_92:
(Start: 4 @64645 has 279 MA's), (5, 64636), (7, 64612), (9, 64579), (10, 64570),

Gene: Tooj_88 Start: 63897, Stop: 63676, Start Num: 4
Candidate Starts for Tooj_88:
(Start: 4 @63897 has 279 MA's), (5, 63888), (7, 63864), (9, 63831), (10, 63822),

Gene: Triad_91 Start: 64131, Stop: 63910, Start Num: 4
Candidate Starts for Triad_91:
(Start: 4 @64131 has 279 MA's), (5, 64122), (7, 64098), (9, 64065), (10, 64056),

Gene: True_89 Start: 64230, Stop: 64009, Start Num: 4
Candidate Starts for True_89:
(Start: 4 @64230 has 279 MA's), (5, 64221), (7, 64197), (9, 64164), (10, 64155),

Gene: Trypo_91 Start: 64952, Stop: 64731, Start Num: 4
Candidate Starts for Trypo_91:
(Start: 4 @64952 has 279 MA's), (5, 64943), (7, 64919), (9, 64886), (10, 64877),

Gene: TyrionL_91 Start: 64314, Stop: 64093, Start Num: 4
Candidate Starts for TyrionL_91:
(Start: 4 @64314 has 279 MA's), (5, 64305), (7, 64281), (9, 64248), (10, 64239),

Gene: UAch1_92 Start: 64581, Stop: 64360, Start Num: 4
Candidate Starts for UAch1_92:
(Start: 4 @64581 has 279 MA's), (5, 64572), (7, 64548), (9, 64515), (10, 64506),

Gene: UncleHowie_87 Start: 63918, Stop: 63697, Start Num: 4
Candidate Starts for UncleHowie_87:
(Start: 4 @63918 has 279 MA's), (5, 63909), (7, 63885), (9, 63852), (10, 63843),

Gene: Usavi_91 Start: 65078, Stop: 64857, Start Num: 4
Candidate Starts for Usavi_91:
(Start: 4 @65078 has 279 MA's), (5, 65069), (7, 65045), (9, 65012), (10, 65003),

Gene: Vaishali24_92 Start: 64678, Stop: 64436, Start Num: 4
Candidate Starts for Vaishali24_92:
(Start: 4 @64678 has 279 MA's), (5, 64669), (7, 64645), (9, 64612), (10, 64603), (18, 64531),

Gene: Valjean_89 Start: 64472, Stop: 64251, Start Num: 4
Candidate Starts for Valjean_89:
(Start: 4 @64472 has 279 MA's), (5, 64463), (7, 64439), (9, 64406), (10, 64397),

Gene: Vaticameos_88 Start: 62787, Stop: 62566, Start Num: 4
Candidate Starts for Vaticameos_88:
(Start: 4 @62787 has 279 MA's), (5, 62778), (7, 62754), (9, 62721), (10, 62712),

Gene: Veritas_90 Start: 64395, Stop: 64174, Start Num: 4
Candidate Starts for Veritas_90:
(Start: 4 @64395 has 279 MA's), (5, 64386), (7, 64362), (9, 64329), (10, 64320),

Gene: Virapocalypse_92 Start: 64580, Stop: 64359, Start Num: 4
Candidate Starts for Virapocalypse_92:
(Start: 4 @64580 has 279 MA's), (5, 64571), (7, 64547), (9, 64514), (10, 64505),

Gene: Virgeve_89 Start: 64199, Stop: 63978, Start Num: 4
Candidate Starts for Virgeve_89:
(Start: 4 @64199 has 279 MA's), (5, 64190), (7, 64166), (9, 64133), (10, 64124),

Gene: Vista_90 Start: 64393, Stop: 64172, Start Num: 4
Candidate Starts for Vista_90:
(Start: 4 @64393 has 279 MA's), (5, 64384), (7, 64360), (9, 64327), (10, 64318),

Gene: Vivaldi_91 Start: 64659, Stop: 64438, Start Num: 4
Candidate Starts for Vivaldi_91:
(Start: 4 @64659 has 279 MA's), (5, 64650), (7, 64626), (9, 64593), (10, 64584),

Gene: Vortex_89 Start: 64500, Stop: 64279, Start Num: 4
Candidate Starts for Vortex_89:
(Start: 4 @64500 has 279 MA's), (5, 64491), (7, 64467), (9, 64434), (10, 64425),

Gene: Wallhey_92 Start: 64501, Stop: 64280, Start Num: 4
Candidate Starts for Wallhey_92:
(Start: 4 @64501 has 279 MA's), (5, 64492), (7, 64468), (9, 64435), (10, 64426),

Gene: Waterdiva_92 Start: 64767, Stop: 64546, Start Num: 4
Candidate Starts for Waterdiva_92:
(Start: 4 @64767 has 279 MA's), (5, 64758), (7, 64734), (9, 64701), (10, 64692),

Gene: Weher20_88 Start: 64838, Stop: 64617, Start Num: 4
Candidate Starts for Weher20_88:
(Start: 4 @64838 has 279 MA's), (5, 64829), (7, 64805), (9, 64772), (10, 64763),

Gene: Windsor_91 Start: 64783, Stop: 64562, Start Num: 4
Candidate Starts for Windsor_91:
(Start: 4 @64783 has 279 MA's), (5, 64774), (7, 64750), (9, 64717), (10, 64708),

Gene: Xavier_90 Start: 64392, Stop: 64171, Start Num: 4
Candidate Starts for Xavier_90:
(Start: 4 @64392 has 279 MA's), (5, 64383), (7, 64359), (9, 64326), (10, 64317),

Gene: Yoshand_92 Start: 64617, Stop: 64396, Start Num: 4

Candidate Starts for Yoshand_92:

(Start: 4 @64617 has 279 MA's), (5, 64608), (7, 64584), (9, 64551), (10, 64542),

Gene: YouGoGlencoco_91 Start: 64507, Stop: 64286, Start Num: 4

Candidate Starts for YouGoGlencoco_91:

(Start: 4 @64507 has 279 MA's), (5, 64498), (7, 64474), (9, 64441), (10, 64432),

Gene: Zaider_92 Start: 64882, Stop: 64661, Start Num: 4

Candidate Starts for Zaider_92:

(Start: 4 @64882 has 279 MA's), (5, 64873), (7, 64849), (9, 64816), (10, 64807),

Gene: Zelda_91 Start: 64838, Stop: 64617, Start Num: 4

Candidate Starts for Zelda_91:

(Start: 4 @64838 has 279 MA's), (5, 64829), (7, 64805), (9, 64772), (10, 64763),

Gene: Zenteno07_95 Start: 66788, Stop: 66540, Start Num: 6

Candidate Starts for Zenteno07_95:

(Start: 6 @66788 has 7 MA's), (14, 66713), (22, 66587), (23, 66584),

Gene: Zonia_91 Start: 64949, Stop: 64728, Start Num: 4

Candidate Starts for Zonia_91:

(Start: 4 @64949 has 279 MA's), (5, 64940), (7, 64916), (9, 64883), (10, 64874),