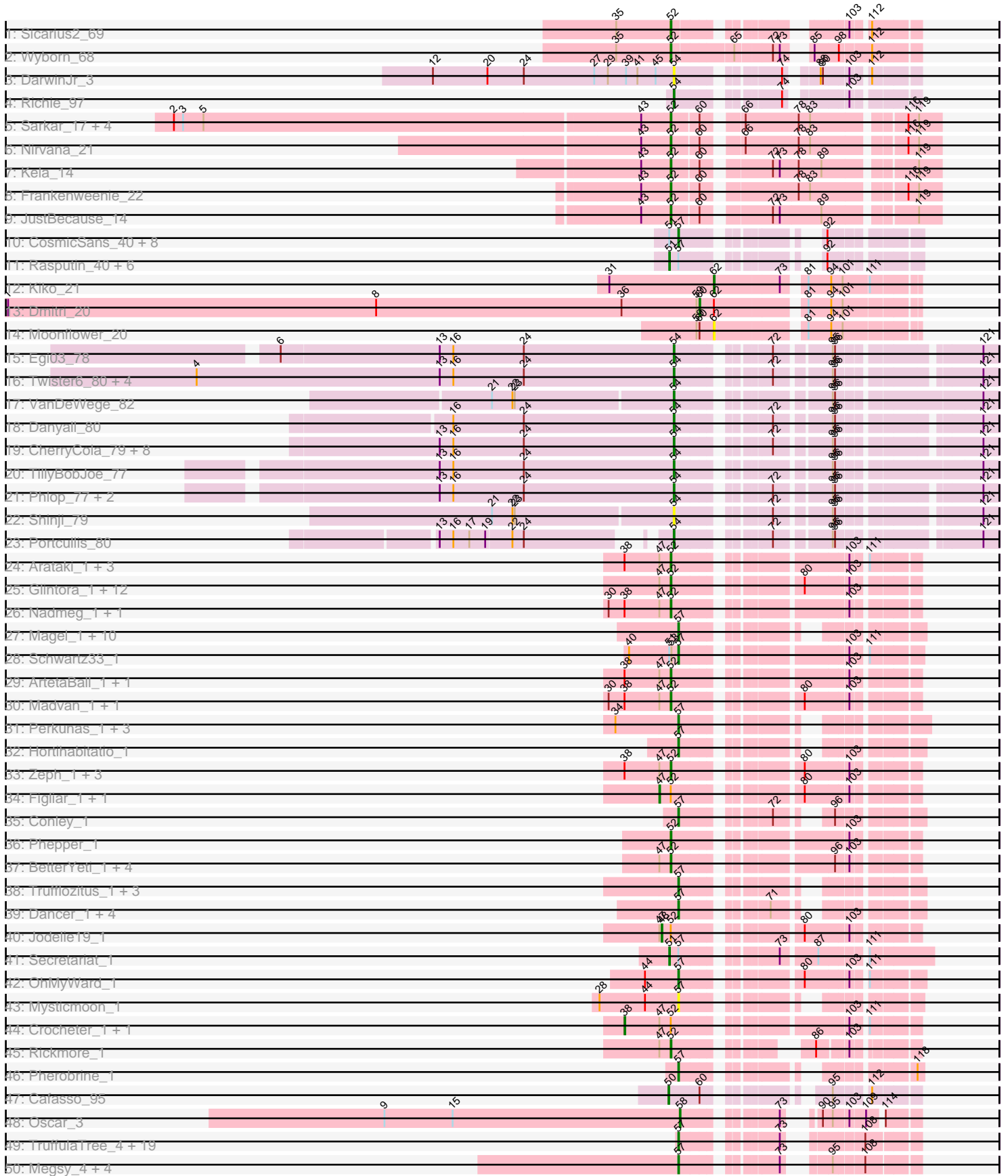
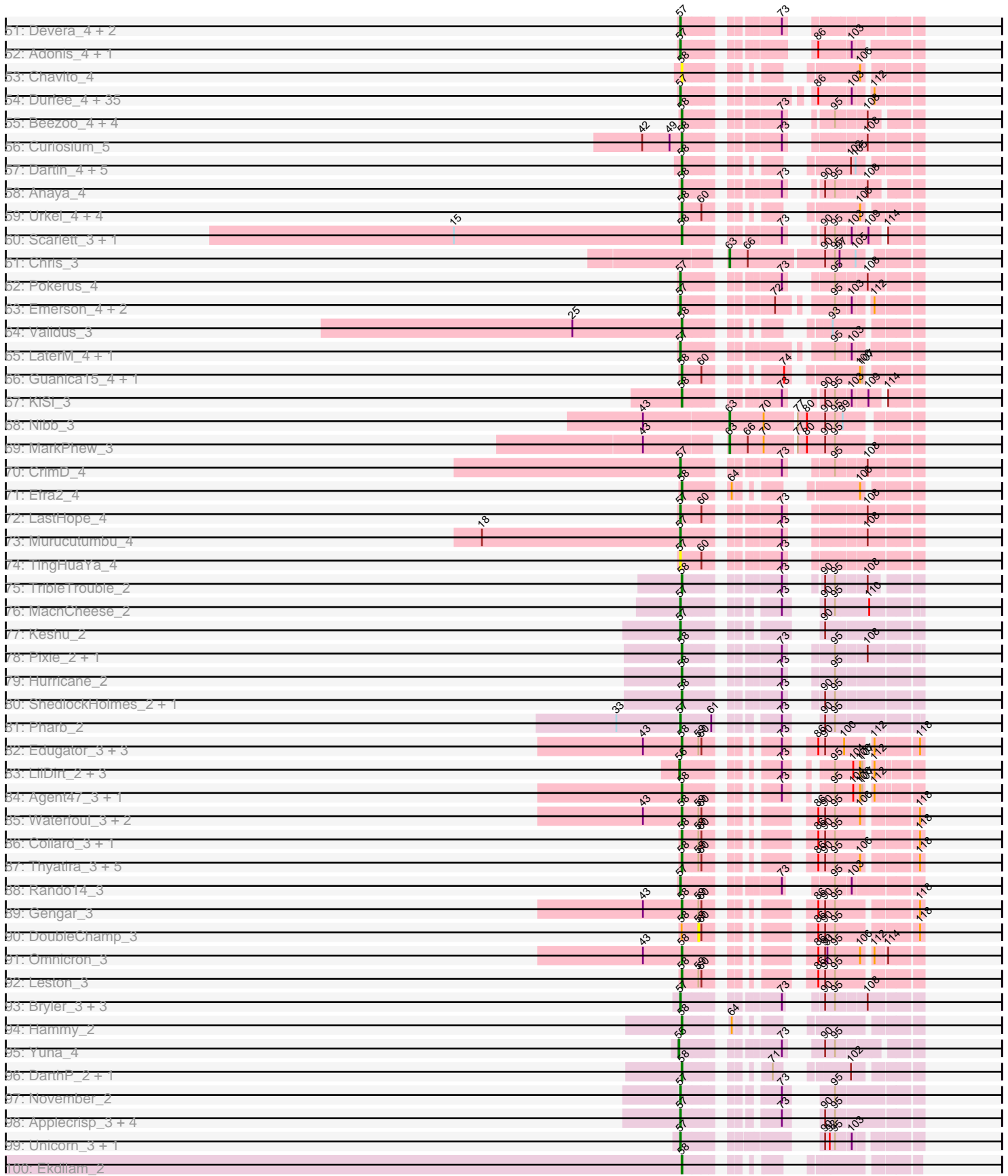


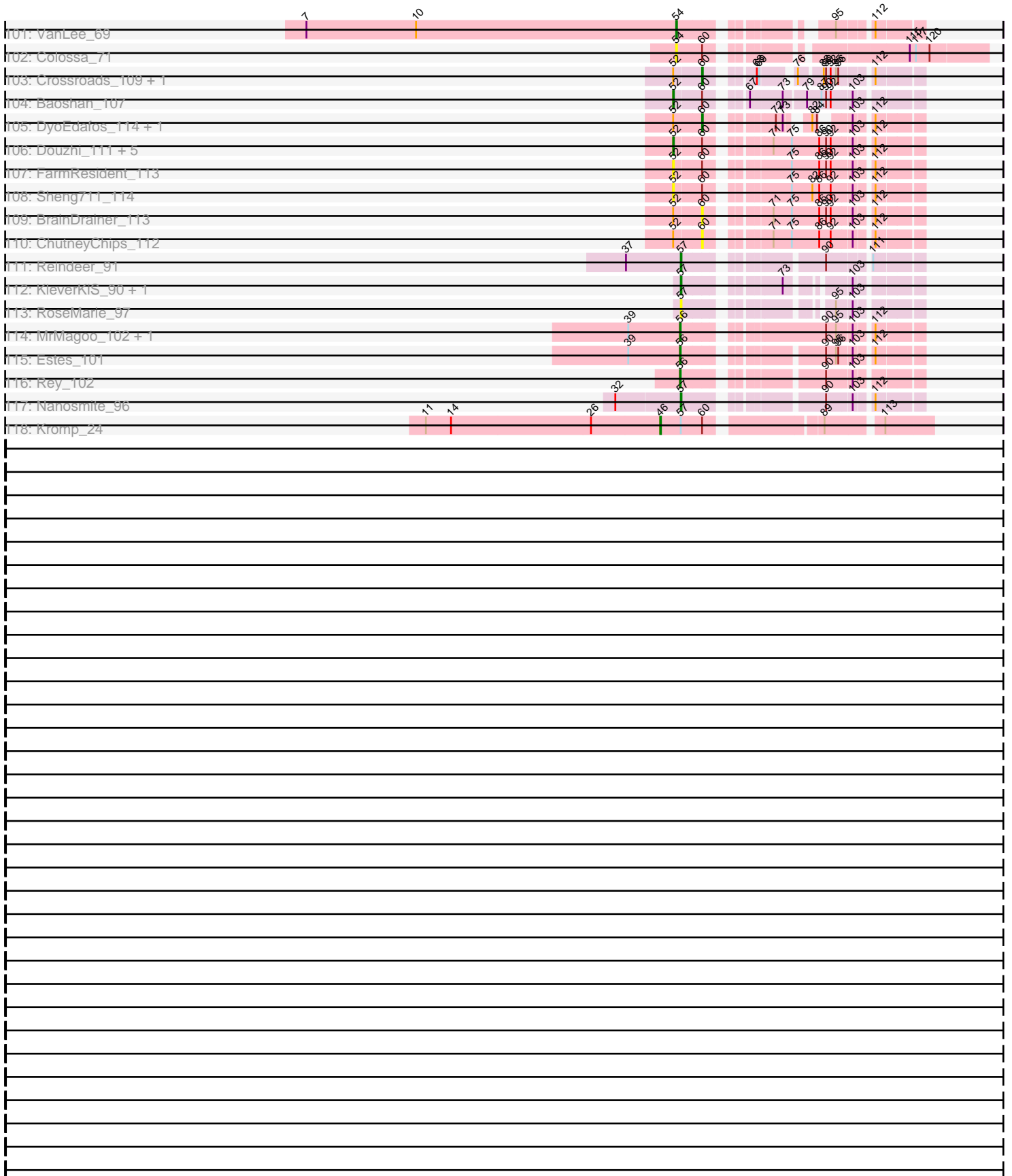
Pham 292451



Pham 292451



Pham 292451



Note: Tracks are now grouped by subcluster and scaled. Switching in subcluster is indicated by changes in track color. Track scale is now set by default to display the region 30 bp upstream of start 1 to 30 bp downstream of the last possible start. If this default region is judged to be packed too tightly with annotated starts, the track will be further scaled to only show that region of the ORF with annotated starts. This action will be indicated by adding "Zoomed" to the title. For starts, yellow indicates the location of called starts comprised solely of Glimmer/GeneMark auto-annotations, green indicates the location of called starts with at least 1 manual gene annotation.

## Pham 292451 Report

This analysis was run 04/18/26 on database version 643.

Pham number 292451 has 311 members, 45 are drafts.

Phages represented in each track:

- Track 1 : Sicarius2\_69
- Track 2 : Wyborn\_68
- Track 3 : DarwinJr\_3
- Track 4 : Richie\_97
- Track 5 : Sarkar\_17, Quantum\_15, EhyElimayoE\_16, Satis\_16, Kradal\_16
- Track 6 : Nirvana\_21
- Track 7 : Kela\_14
- Track 8 : Frankenweenie\_22
- Track 9 : JustBecause\_14
- Track 10 : CosmicSans\_40, Rhodalysa\_40, BobbyDazzler\_40, Krishelle\_40, Lillie\_40, TWAMP\_40, Bonanza\_40, RER2\_33, Hiro\_40
- Track 11 : Rasputin\_40, Bradshaw\_40, PhailMary\_39, Alpacados\_39, Gollum\_40, Phrankenstein\_40, Swann\_40
- Track 12 : Kiko\_21
- Track 13 : Dmitri\_20
- Track 14 : Moonflower\_20
- Track 15 : Egi03\_78
- Track 16 : Twister6\_80, SmokingBunny\_80, Evamon\_79, Togo\_79, Salvador\_79
- Track 17 : VanDeWege\_82
- Track 18 : Danyall\_80
- Track 19 : CherryCola\_79, Mutzi\_77, CoveyB\_80, Gezellig\_76, KimmyK\_79, Wizard\_76, Halo3\_77, Bakery\_84, YungMoney\_78
- Track 20 : TillyBobJoe\_77
- Track 21 : Phlop\_77, RogerDodger\_83, PullumCavea\_78
- Track 22 : Shinji\_79
- Track 23 : Portcullis\_80
- Track 24 : Arataki\_1, CWormy\_1, Dialga\_1, Demure\_1
- Track 25 : Glintora\_1, AlainaMarie\_1, Citrus\_1, MajinBuu\_1, Aflac\_1, BluerMoon\_1, EndAve\_1, Chikenjars\_1, Duffington\_1, Luthien\_1, Tonaltzin\_1, OlgasClover\_1, TenaciousP\_1
- Track 26 : Nadmeg\_1, Burley\_1
- Track 27 : Magel\_1, Capybara\_1, ChickyNuggy\_1, Gravy\_1, Kerry\_1, Odesza\_1, Roney\_1, NoPickles\_1, Gill\_1, Tanis\_1, Football\_1
- Track 28 : Schwartz33\_1
- Track 29 : ArtetaBall\_1, Kenosha\_1
- Track 30 : Madvan\_1, Runhaar\_1
- Track 31 : Perkunas\_1, Talon44\_1, Petite\_1, SweetCrkHerbs\_1

- Track 32 : Hortihabitatio\_1
- Track 33 : Zeph\_1, Eddiemania\_1, Hydrus\_1, Vardy\_1
- Track 34 : Figliar\_1, Nithya\_1
- Track 35 : Conley\_1
- Track 36 : Phepper\_1
- Track 37 : BetterYeti\_1, ShaggyRogers\_1, Gusicorn\_1, PestoPenguin\_1, Aloe25\_1
- Track 38 : Trufflozitus\_1, Captrips\_1, Tairn4Wing\_1, Avazak\_1
- Track 39 : Dancer\_1, Bugg\_1, Artorias\_1, JulesRay\_1, FortCran\_1
- Track 40 : Jodelie19\_1
- Track 41 : Secretariat\_1
- Track 42 : OhMyWard\_1
- Track 43 : Mysticmoon\_1
- Track 44 : Crocheter\_1, Untouchable\_1
- Track 45 : Rickmore\_1
- Track 46 : Pherobrine\_1
- Track 47 : Cafasso\_95
- Track 48 : Oscar\_3
- Track 49 : TruffulaTree\_4, JAWS\_4, Zabiza\_4, BarrelRoll\_4, Bella96\_4, DartGoblin\_4, Adephagia\_4, Slimphazie\_4, CallaLilly\_4, Apocalypse\_4, BaghaKamala\_4, ActinUp\_4, Bern\_4, YoureAdopted\_4, HedwigODU\_4, MeaningOfLife\_4, Jayhawk\_4, Ramen\_4, Joy99\_4, Rapunzel97\_4
- Track 50 : Megsy\_4, Prithvi\_4, TreyKay\_4, LindNT\_4, TaiwanKao\_4
- Track 51 : Devera\_4, Dole\_4, Illumine\_4
- Track 52 : Adonis\_4, Tiri\_4
- Track 53 : Chavito\_4
- Track 54 : Durfee\_4, Boiiii\_4, Blizzard\_4, Homura\_4, ShiaSurprise\_4, Clipper\_4, Padfoot\_4, BGIluviae\_4, CheetoDust\_4, Twitch\_4, Ganymede\_4, Piatt\_4, Veliki\_4, Lunahalos\_4, Dalmuri\_4, Belladonna\_4, Mynx\_4, QuincyRose\_4, Tachez\_4, Jarvi\_4, Llorens\_4, Topper\_4, Asayake\_4, BEEST\_4, Hyperbowlee\_4, Jeckyll\_4, Capricorn\_4, Atiba\_4, Rosmarinus\_4, Peel\_4, MacKat\_4, CREW\_4, CaseJules\_4, Inky\_4, Zavala\_4, Spock\_4
- Track 55 : Beezoo\_4, Angelica\_4, Ageofdapage\_4, Deby\_4, Sulley\_4
- Track 56 : Curiosium\_5
- Track 57 : Dartin\_4, Shaobing\_4, Niklas\_4, Peanam\_4, Richo\_4, McMater\_4
- Track 58 : Anaya\_4
- Track 59 : Urkel\_4, DrHayes\_4, Anma\_4, TiniBug\_4, SamuelLPlaqson\_4
- Track 60 : Scarlett\_3, LeMond\_3
- Track 61 : Chris\_3
- Track 62 : Pokerus\_4
- Track 63 : Emerson\_4, Padpat\_4, AlishaPH\_4
- Track 64 : Validus\_3
- Track 65 : LaterM\_4, Stinson\_4
- Track 66 : Guanica15\_4, Yunkel11\_4
- Track 67 : KiSi\_3
- Track 68 : Nibb\_3
- Track 69 : MarkPhew\_3
- Track 70 : CrimD\_4
- Track 71 : Efra2\_4
- Track 72 : LastHope\_4
- Track 73 : Murucutumbu\_4
- Track 74 : TingHuaYa\_4
- Track 75 : TribbleTrouble\_2
- Track 76 : MacnCheese\_2

- Track 77 : Keshu\_2
- Track 78 : Pixie\_2, TBond007\_2
- Track 79 : Hurricane\_2
- Track 80 : ShedlockHolmes\_2, Lea83\_2
- Track 81 : Pharb\_2
- Track 82 : Edugator\_3, Dadosky\_3, AlleyCat\_3, Psycho\_3
- Track 83 : LilDirt\_2, ViviJ\_2, Neighly\_3, Kratio\_2
- Track 84 : Agent47\_3, InvictusManeo\_3
- Track 85 : Waterfoul\_3, SoSeph\_3, Heftyboy\_3
- Track 86 : Collard\_3, BananenDer1\_3
- Track 87 : Thyatira\_3, Guillsminger\_3, Miryou\_3, OkiRoe\_3, Feyre\_3, Paola\_3
- Track 88 : Rando14\_3
- Track 89 : Gengar\_3
- Track 90 : DoubleChamp\_3
- Track 91 : Omnicron\_3
- Track 92 : Leston\_3
- Track 93 : Bryler\_3, Phrank\_3, Tierra\_3, Cain\_3
- Track 94 : Hammy\_2
- Track 95 : Yuna\_4
- Track 96 : DARTH\_P\_2, Amohntion\_2
- Track 97 : November\_2
- Track 98 : Applecrisp\_3, Ellie\_2, Fefferhead\_2, Lavahound\_2, Amgine\_2
- Track 99 : Unicorn\_3, PhelpsODU\_3
- Track 100 : Ekdilam\_2
- Track 101 : VanLee\_69
- Track 102 : Colossa\_71
- Track 103 : Crossroads\_109, MkaliMitinis3\_109
- Track 104 : Baoshan\_107
- Track 105 : DyoEdafos\_114, Kropertea\_105
- Track 106 : Douzhi\_111, PYPDinur\_112, Chaser\_110, Bromden\_112, Quby\_111, Douge\_111
- Track 107 : FarmResident\_113
- Track 108 : Sheng711\_114
- Track 109 : BrainDrainer\_113
- Track 110 : ChutneyChips\_112
- Track 111 : Reindeer\_91
- Track 112 : KleverKiS\_90, SlimJimmy\_90
- Track 113 : RoseMarie\_97
- Track 114 : MrMagoo\_102, GardenSalsa\_101
- Track 115 : Estes\_101
- Track 116 : Rey\_102
- Track 117 : Nanosmite\_96
- Track 118 : Kromp\_24

***Summary of Final Annotations (See graph section above for start numbers):***

The start number called the most often in the published annotations is 57, it was called in 122 of the 266 non-draft genes in the pham.

Genes that call this "Most Annotated" start:

- ActinUp\_4, Adephegia\_4, Adonis\_4, AlishaPH\_4, Amgine\_2, Apocalypse\_4, Applecrisp\_3, Artorias\_1, Asayake\_4, Atiba\_4, Avazak\_1, BEEST\_4, BGlluviae\_4, BaghaKamala\_4, BarrelRoll\_4, Bella96\_4, Belladonna\_4, Bern\_4, Blizzard\_4, BobbyDazzler\_40, Boiiii\_4, Bonanza\_40, Bryler\_3, Bugg\_1, CREW\_4, Cain\_3, CallaLilly\_4, Capricorn\_4, Captrips\_1, Capybara\_1, CaseJules\_4, CheetoDust\_4, ChickyNuggy\_1, Clipper\_4, Conley\_1, CosmicSans\_40, CrimD\_4, Dalmuri\_4, Dancer\_1, DartGoblin\_4, Devera\_4, Dole\_4, Durfee\_4, Ellie\_2, Emerson\_4, Fefferhead\_2, Football\_1, FortCran\_1, Ganymede\_4, Gill\_1, Gravy\_1, HedwigODU\_4, Hiro\_40, Homura\_4, Hortihabitatio\_1, Hyperbowlee\_4, Illumine\_4, Inky\_4, JAWS\_4, Jarvi\_4, Jayhawk\_4, Jeckyll\_4, Joy99\_4, JulesRay\_1, Kerry\_1, Keshu\_2, KleverKiS\_90, Krishelle\_40, LastHope\_4, LaterM\_4, Lavahound\_2, Lillie\_40, LindNT\_4, Llorens\_4, Lunahalos\_4, MacKat\_4, MacnCheese\_2, Magel\_1, MeaningOfLife\_4, Megsy\_4, Murucutumbu\_4, Mynx\_4, Mysticmoon\_1, Nanosmite\_96, NoPickles\_1, November\_2, Odesza\_1, OhMyWard\_1, Padfoot\_4, Padpat\_4, Peel\_4, Perkunas\_1, Petite\_1, Pharb\_2, PhelpsODU\_3, Pherobrine\_1, Phrank\_3, Piatt\_4, Pokerus\_4, Prithvi\_4, QuincyRose\_4, RER2\_33, Ramen\_4, Rando14\_3, Rapunzel97\_4, Reindeer\_91, Rhodalysa\_40, Roney\_1, RoseMarie\_97, Rosmarinus\_4, Schwartz33\_1, ShiaSurprise\_4, SlimJimmy\_90, Slimphazie\_4, Spock\_4, Stinson\_4, SweetCrkHerbs\_1, TWAMP\_40, Tachez\_4, Tairn4Wing\_1, TaiwanKao\_4, Talon44\_1, Tanis\_1, Tierra\_3, TingHuaYa\_4, Tiri\_4, Topper\_4, TreyKay\_4, Trufflozitus\_1, TruffulaTree\_4, Twitch\_4, Unicorn\_3, Veliki\_4, YoureAdopted\_4, Zabiza\_4, Zavala\_4,

Genes that have the "Most Annotated" start but do not call it:

- Alpacados\_39, Bradshaw\_40, Gollum\_40, Kromp\_24, PhailMary\_39, Phrankenstein\_40, Rasputin\_40, Secretariat\_1, Swann\_40,

Genes that do not have the "Most Annotated" start:

- Aflac\_1, Agent47\_3, Ageofdapage\_4, AlainaMarie\_1, AlleyCat\_3, Aloe25\_1, Amohnition\_2, Anaya\_4, Angelica\_4, Anma\_4, Arataki\_1, ArtetaBall\_1, Bakery\_84, BananenDer11\_3, Baoshan\_107, Beezoo\_4, BetterYeti\_1, BluerMoon\_1, BrainDrainer\_113, Bromden\_112, Burley\_1, CWormy\_1, Cafasso\_95, Chaser\_110, Chavito\_4, CherryCola\_79, Chikenjars\_1, Chris\_3, ChutneyChips\_112, Citrus\_1, Collard\_3, Colossa\_71, CoveyB\_80, Crocheter\_1, Crossroads\_109, Curiosium\_5, Dadosky\_3, Danyall\_80, DARTH\_2, Dartin\_4, DarwinJr\_3, Deby\_4, Demure\_1, Dialga\_1, Dmitri\_20, DoubleChamp\_3, Douge\_111, Douzhi\_111, DrHayes\_4, Duffington\_1, DyoEdafos\_114, Eddiemania\_1, Edugator\_3, Efra2\_4, Egi03\_78, EhyElimayoE\_16, Ekdilam\_2, EndAve\_1, Estes\_101, Evamon\_79, FarmResident\_113, Feyre\_3, Figliar\_1, Frankenweenie\_22, GardenSalsa\_101, Gengar\_3, Gezellig\_76, Glintora\_1, Guanica15\_4, Guillsminger\_3, Gusicorn\_1, Halo3\_77, Hammy\_2, Heftyboy\_3, Hurricane\_2, Hydrus\_1, InvictusManeo\_3, Jodelie19\_1, JustBecause\_14, Kela\_14, Kenosha\_1, KiSi\_3, Kiko\_21, KimmyK\_79, Kradal\_16, Kratio\_2, Kropertea\_105, LeMond\_3, Lea83\_2, Leston\_3, LilDirt\_2, Luthien\_1, Madvan\_1, MajinBuu\_1, MarkPhew\_3, McMater\_4, Miryou\_3, MkaliMitinis3\_109, Moonflower\_20, MrMagoo\_102, Mutzi\_77, Nadmeg\_1, Neighly\_3, Nibb\_3, Niklas\_4, Nirvana\_21, Nithya\_1, OkiRoe\_3, OlgasClover\_1, Omnicron\_3, Oscar\_3, PYPDinur\_112, Paola\_3, Peanam\_4, PestoPenguin\_1, Phepper\_1, Phlop\_77, Pixie\_2, Portcullis\_80, Psycho\_3, PullumCavea\_78, Quantum\_15, Quby\_111, Rey\_102, Richie\_97, Richo\_4, Rickmore\_1, RogerDodger\_83, Runhaar\_1, Salvador\_79, SamuelLPlaqson\_4, Sarkar\_17, Satis\_16, Scarlett\_3, ShaggyRogers\_1, Shaobing\_4, ShedlockHolmes\_2, Sheng711\_114, Shinji\_79, Sicarius2\_69, SmokingBunny\_80, SoSeph\_3, Sulley\_4, TBond007\_2, TenaciousP\_1, Thyatira\_3, TillyBobJoe\_77, TiniBug\_4, Togo\_79, Tonaltzin\_1, TripleTrouble\_2,

Twister6\_80, Untouchable\_1, Urkel\_4, Validus\_3, VanDeWege\_82, VanLee\_69, Vardy\_1, ViviJ\_2, Waterfoul\_3, Wizard\_76, Wyborn\_68, Yuna\_4, YungMoney\_78, Yunkel11\_4, Zeph\_1,

### Summary by start number:

#### Start 38:

- Found in 16 of 311 ( 5.1% ) of genes in pham
- Manual Annotations of this start: 2 of 266
- Called 12.5% of time when present
- Phage (with cluster) where this start called: Crocheter\_1 (DJ), Untouchable\_1 (DJ),

#### Start 46:

- Found in 1 of 311 ( 0.3% ) of genes in pham
- Manual Annotations of this start: 1 of 266
- Called 100.0% of time when present
- Phage (with cluster) where this start called: Kromp\_24 (singleton),

#### Start 47:

- Found in 38 of 311 ( 12.2% ) of genes in pham
- Manual Annotations of this start: 2 of 266
- Called 5.3% of time when present
- Phage (with cluster) where this start called: Figliar\_1 (DJ), Nithya\_1 (DJ),

#### Start 48:

- Found in 1 of 311 ( 0.3% ) of genes in pham
- Manual Annotations of this start: 1 of 266
- Called 100.0% of time when present
- Phage (with cluster) where this start called: Jodelie19\_1 (DJ),

#### Start 50:

- Found in 1 of 311 ( 0.3% ) of genes in pham
- Manual Annotations of this start: 1 of 266
- Called 100.0% of time when present
- Phage (with cluster) where this start called: Cafasso\_95 (DZ),

#### Start 51:

- Found in 18 of 311 ( 5.8% ) of genes in pham
- Manual Annotations of this start: 8 of 266
- Called 44.4% of time when present
- Phage (with cluster) where this start called: Alpacados\_39 (CA), Bradshaw\_40 (CA), Gollum\_40 (CA), PhailMary\_39 (CA), Phrankenstein\_40 (CA), Rasputin\_40 (CA), Secretariat\_1 (DJ), Swann\_40 (CA),

#### Start 52:

- Found in 65 of 311 ( 20.9% ) of genes in pham
- Manual Annotations of this start: 39 of 266
- Called 83.1% of time when present
- Phage (with cluster) where this start called: Aflac\_1 (DJ), AlainaMarie\_1 (DJ), Aloe25\_1 (DJ), Arataki\_1 (DJ), ArtetaBall\_1 (DJ), Baoshan\_107 (L2), BetterYeti\_1 (DJ), BluerMoon\_1 (DJ), Bromden\_112 (L4), Burley\_1 (DJ), CWormy\_1 (DJ), Chaser\_110 (L4), Chikenjars\_1 (DJ), Citrus\_1 (DJ), Demure\_1 (DJ), Dialga\_1 (DJ), Douge\_111 (L4), Douzhi\_111 (L4), Duffington\_1 (DJ), Eddiemania\_1 (DJ),

EhyElimayoE\_16 (BM), EndAve\_1 (DJ), FarmResident\_113 (L4), Frankenweenie\_22 (BM), Glintora\_1 (DJ), Gusicorn\_1 (DJ), Hydrus\_1 (DJ), JustBecause\_14 (BM), Kela\_14 (BM), Kenosha\_1 (DJ), Kradal\_16 (BM), Luthien\_1 (DJ), Madvan\_1 (DJ), MajinBuu\_1 (DJ), Nadmeg\_1 (DJ), Nirvana\_21 (BM), OlgasClover\_1 (DJ), PYPDinur\_112 (L4), PestoPenguin\_1 (DJ), Phepper\_1 (DJ), Quantum\_15 (BM), Quby\_111 (L4), Rickmore\_1 (DJ), Runhaar\_1 (DJ), Sarkar\_17 (BM), Satis\_16 (BM), ShaggyRogers\_1 (DJ), Sheng711\_114 (L4), Sicarius2\_69 (AO2), TenaciousP\_1 (DJ), Tonaltzin\_1 (DJ), Vardy\_1 (DJ), Wyborn\_68 (AO2), Zeph\_1 (DJ),

#### Start 54:

- Found in 27 of 311 ( 8.7% ) of genes in pham
- Manual Annotations of this start: 24 of 266
- Called 100.0% of time when present
- Phage (with cluster) where this start called: Bakery\_84 (DC1), CherryCola\_79 (DC1), Colossa\_71 (KA), CoveyB\_80 (DC1), Danyall\_80 (DC1), DarwinJr\_3 (AY), Egi03\_78 (DC1), Evamon\_79 (DC1), Gezellig\_76 (DC1), Halo3\_77 (DC1), KimmyK\_79 (DC1), Mutzi\_77 (DC1), Phlop\_77 (DC1), Portcullis\_80 (DC1), PullumCavea\_78 (DC1), Richie\_97 (AY), RogerDodger\_83 (DC1), Salvador\_79 (DC1), Shinji\_79 (DC1), SmokingBunny\_80 (DC1), TillyBobJoe\_77 (DC1), Togo\_79 (DC1), Twister6\_80 (DC1), VanDeWege\_82 (DC1), VanLee\_69 (KA), Wizard\_76 (DC1), YungMoney\_78 (DC1),

#### Start 55:

- Found in 1 of 311 ( 0.3% ) of genes in pham
- Manual Annotations of this start: 1 of 266
- Called 100.0% of time when present
- Phage (with cluster) where this start called: Yuna\_4 (K6),

#### Start 56:

- Found in 8 of 311 ( 2.6% ) of genes in pham
- Manual Annotations of this start: 6 of 266
- Called 100.0% of time when present
- Phage (with cluster) where this start called: Estes\_101 (M2), GardenSalsa\_101 (M2), Kratio\_2 (K5), LilDirt\_2 (K5), MrMagoo\_102 (M2), Neighly\_3 (K3), Rey\_102 (M2), ViviJ\_2 (K5),

#### Start 57:

- Found in 145 of 311 ( 46.6% ) of genes in pham
- Manual Annotations of this start: 122 of 266
- Called 93.8% of time when present
- Phage (with cluster) where this start called: ActinUp\_4 (K1), Adephagia\_4 (K1), Adonis\_4 (K1), AlishaPH\_4 (K1), Amgine\_2 (K6), Apocalypse\_4 (K1), Applecrisp\_3 (K6), Artorias\_1 (DJ), Asayake\_4 (K1), Atiba\_4 (K1), Avazak\_1 (DJ), BEEST\_4 (K1), BGIlluvia\_4 (K1), BaghaKamala\_4 (K1), BarrelRoll\_4 (K1), Bella96\_4 (K1), Belladonna\_4 (K1), Bern\_4 (K1), Blizzard\_4 (K1), BobbyDazzler\_40 (CA), Boiiii\_4 (K1), Bonanza\_40 (CA), Bryler\_3 (K6), Bugg\_1 (DJ), CREW\_4 (K1), Cain\_3 (K6), CallaLilly\_4 (K1), Capricorn\_4 (K1), Captrips\_1 (DJ), Copybara\_1 (DJ), CaseJules\_4 (K1), CheetoDust\_4 (K1), ChickyNuggy\_1 (DJ), Clipper\_4 (K1), Conley\_1 (DJ), CosmicSans\_40 (CA), CrimD\_4 (K1), Dalmuri\_4 (K1), Dancer\_1 (DJ), DartGoblin\_4 (K1), Devera\_4 (K1), Dole\_4 (K1), Durfee\_4 (K1), Ellie\_2 (K6), Emerson\_4 (K1), Fefferhead\_2 (K6), Football\_1 (DJ), FortCran\_1 (DJ), Ganymede\_4 (K1), Gill\_1 (DJ), Gravy\_1 (DJ), HedwigODU\_4 (K1), Hiro\_40 (CA), Homura\_4 (K1), Hortihabitatio\_1 (DJ), Hyperbowlee\_4 (K1), Illumine\_4 (K1), Inky\_4 (K1), JAWS\_4 (K1), Jarvi\_4 (K1),

Jayhawk\_4 (K1), Jeckyll\_4 (K1), Joy99\_4 (K1), JulesRay\_1 (DJ), Kerry\_1 (DJ), Keshu\_2 (K3), KleverKiS\_90 (M1), Krishelle\_40 (CA), LastHope\_4 (K1), LaterM\_4 (K1), Lavahound\_2 (K6), Lillie\_40 (CA), LindNT\_4 (K1), Llorens\_4 (K1), Lunahalos\_4 (K1), MacKat\_4 (K1), MacnCheese\_2 (K3), Magel\_1 (DJ), MeaningOfLife\_4 (K1), Megsy\_4 (K1), Murucutumbu\_4 (K1), Mynx\_4 (K1), Mysticmoon\_1 (DJ), Nanosmite\_96 (M3), NoPickles\_1 (DJ), November\_2 (K6), Odesza\_1 (DJ), OhMyWard\_1 (DJ), Padfoot\_4 (K1), Padpat\_4 (K1), Peel\_4 (K1), Perkunas\_1 (DJ), Petite\_1 (DJ), Pharb\_2 (K3), PhelpsODU\_3 (K6), Pherobrine\_1 (DJ), Phrank\_3 (K6), Piatt\_4 (K1), Pokerus\_4 (K1), Prithvi\_4 (K1), QuincyRose\_4 (K1), RER2\_33 (CA), Ramen\_4 (K1), Rando14\_3 (K5), Rapunzel97\_4 (K1), Reindeer\_91 (M1), Rhodalysa\_40 (CA), Roney\_1 (DJ), RoseMarie\_97 (M1), Rosmarinus\_4 (K1), Schwartz33\_1 (DJ), ShiaSurprise\_4 (K1), SlimJimmy\_90 (M1), Slimphazie\_4 (K1), Spock\_4 (K1), Stinson\_4 (K1), SweetCrkHerbs\_1 (DJ), TWAMP\_40 (CA), Tachez\_4 (K1), Tairn4Wing\_1 (DJ), TaiwanKao\_4 (K1), Talon44\_1 (DJ), Tanis\_1 (DJ), Tierra\_3 (K6), TingHuaYa\_4 (K1), Tiri\_4 (K1), Topper\_4 (K1), TreyKay\_4 (K1), Trufflozitus\_1 (DJ), TruffulaTree\_4 (K1), Twitch\_4 (K1), Unicorn\_3 (K6), Veliki\_4 (K1), YoureAdopted\_4 (K1), Zabiza\_4 (K1), Zavala\_4 (K1),

#### Start 58:

- Found in 58 of 311 ( 18.6% ) of genes in pham
- Manual Annotations of this start: 51 of 266
- Called 98.3% of time when present
- Phage (with cluster) where this start called: Agent47\_3 (K5), Ageofdapage\_4 (K1), AlleyCat\_3 (K5), Amohntion\_2 (K6), Anaya\_4 (K1), Angelica\_4 (K1), Anma\_4 (K1), BananenDer11\_3 (K5), Beezoo\_4 (K1), Chavito\_4 (K1), Collard\_3 (K5), Curiosium\_5 (K1), Dadosky\_3 (K5), DarthP\_2 (K6), Dartin\_4 (K1), Deby\_4 (K1), DrHayes\_4 (K1), Edugator\_3 (K5), Efra2\_4 (K1), Ekdilam\_2 (K6), Feyre\_3 (K5), Gengar\_3 (K5), Guanica15\_4 (K1), Guillsminger\_3 (K5), Hammy\_2 (K6), Heftyboy\_3 (K5), Hurricane\_2 (K3), InvictusManeo\_3 (K5), KiSi\_3 (K1), LeMond\_3 (K1), Lea83\_2 (K3), Leston\_3 (K5), McMater\_4 (K1), Miryou\_3 (K5), Niklas\_4 (K1), OkiRoe\_3 (K5), Omnicron\_3 (K5), Oscar\_3 (K1), Paola\_3 (K5), Peanam\_4 (K1), Pixie\_2 (K3), Psycho\_3 (K5), Richo\_4 (K1), SamuelLPlaqson\_4 (K1), Scarlett\_3 (K1), Shaobing\_4 (K1), ShedlockHolmes\_2 (K3), SoSeph\_3 (K5), Sulley\_4 (K1), TBond007\_2 (K3), Thyatira\_3 (K5), TiniBug\_4 (K1), TribbleTrouble\_2 (K3), Urkel\_4 (K1), Validus\_3 (K1), Waterfoul\_3 (K5), Yunkel11\_4 (K1),

#### Start 59:

- Found in 20 of 311 ( 6.4% ) of genes in pham
- No Manual Annotations of this start.
- Called 5.0% of time when present
- Phage (with cluster) where this start called: DoubleChamp\_3 (K5),

#### Start 60:

- Found in 56 of 311 ( 18.0% ) of genes in pham
- Manual Annotations of this start: 4 of 266
- Called 12.5% of time when present
- Phage (with cluster) where this start called: BrainDrainer\_113 (L4), ChutneyChips\_112 (L4), Crossroads\_109 (L2), Dmitri\_20 (DB), DyoEdafos\_114 (L4), Kropertea\_105 (L4), MkaliMitinis3\_109 (L2),

#### Start 62:

- Found in 3 of 311 ( 1.0% ) of genes in pham
- Manual Annotations of this start: 1 of 266

- Called 66.7% of time when present
- Phage (with cluster) where this start called: Kiko\_21 (DB), Moonflower\_20 (DB),

Start 63:

- Found in 3 of 311 ( 1.0% ) of genes in pham
- Manual Annotations of this start: 3 of 266
- Called 100.0% of time when present
- Phage (with cluster) where this start called: Chris\_3 (K1), MarkPhew\_3 (K1), Nibb\_3 (K1),

### **Summary by clusters:**

There are 19 clusters represented in this pham: KA, DJ, M3, BM, CA, DB, L4, AO2, singleton, K3, K1, L2, K6, K5, M2, AY, M1, DZ, DC1,

Info for manual annotations of cluster AO2:

- Start number 52 was manually annotated 2 times for cluster AO2.

Info for manual annotations of cluster AY:

- Start number 54 was manually annotated 1 time for cluster AY.

Info for manual annotations of cluster BM:

- Start number 52 was manually annotated 8 times for cluster BM.

Info for manual annotations of cluster CA:

- Start number 51 was manually annotated 7 times for cluster CA.
- Start number 57 was manually annotated 8 times for cluster CA.

Info for manual annotations of cluster DB:

- Start number 60 was manually annotated 1 time for cluster DB.
- Start number 62 was manually annotated 1 time for cluster DB.

Info for manual annotations of cluster DC1:

- Start number 54 was manually annotated 22 times for cluster DC1.

Info for manual annotations of cluster DJ:

- Start number 38 was manually annotated 2 times for cluster DJ.
- Start number 47 was manually annotated 2 times for cluster DJ.
- Start number 48 was manually annotated 1 time for cluster DJ.
- Start number 51 was manually annotated 1 time for cluster DJ.
- Start number 52 was manually annotated 25 times for cluster DJ.
- Start number 57 was manually annotated 23 times for cluster DJ.

Info for manual annotations of cluster DZ:

- Start number 50 was manually annotated 1 time for cluster DZ.

Info for manual annotations of cluster K1:

- Start number 57 was manually annotated 73 times for cluster K1.
- Start number 58 was manually annotated 22 times for cluster K1.
- Start number 63 was manually annotated 3 times for cluster K1.

Info for manual annotations of cluster K3:

- Start number 57 was manually annotated 3 times for cluster K3.

- Start number 58 was manually annotated 6 times for cluster K3.

Info for manual annotations of cluster K5:

- Start number 56 was manually annotated 2 times for cluster K5.
- Start number 57 was manually annotated 1 time for cluster K5.
- Start number 58 was manually annotated 19 times for cluster K5.

Info for manual annotations of cluster K6:

- Start number 55 was manually annotated 1 time for cluster K6.
- Start number 57 was manually annotated 11 times for cluster K6.
- Start number 58 was manually annotated 4 times for cluster K6.

Info for manual annotations of cluster KA:

- Start number 54 was manually annotated 1 time for cluster KA.

Info for manual annotations of cluster L2:

- Start number 52 was manually annotated 1 time for cluster L2.
- Start number 60 was manually annotated 2 times for cluster L2.

Info for manual annotations of cluster L4:

- Start number 52 was manually annotated 3 times for cluster L4.
- Start number 60 was manually annotated 1 time for cluster L4.

Info for manual annotations of cluster M1:

- Start number 57 was manually annotated 2 times for cluster M1.

Info for manual annotations of cluster M2:

- Start number 56 was manually annotated 4 times for cluster M2.

Info for manual annotations of cluster M3:

- Start number 57 was manually annotated 1 time for cluster M3.

### ***Gene Information:***

Gene: ActinUp\_4 Start: 727, Stop: 954, Start Num: 57

Candidate Starts for ActinUp\_4:

(Start: 57 @727 has 122 MA's), (73, 823), (108, 892),

Gene: Adephagia\_4 Start: 727, Stop: 954, Start Num: 57

Candidate Starts for Adephagia\_4:

(Start: 57 @727 has 122 MA's), (73, 823), (108, 892),

Gene: Adonis\_4 Start: 703, Stop: 930, Start Num: 57

Candidate Starts for Adonis\_4:

(Start: 57 @703 has 122 MA's), (86, 814), (103, 853),

Gene: Aflac\_1 Start: 211, Stop: 468, Start Num: 52

Candidate Starts for Aflac\_1:

(Start: 47 @196 has 2 MA's), (Start: 52 @211 has 39 MA's), (80, 340), (103, 394),

Gene: Agent47\_3 Start: 542, Stop: 754, Start Num: 58

Candidate Starts for Agent47\_3:

(Start: 58 @542 has 51 MA's), (73, 626), (95, 659), (104, 683), (106, 692), (107, 695), (112, 701),

Gene: Ageofdapage\_4 Start: 686, Stop: 904, Start Num: 58

Candidate Starts for Ageofdapage\_4:

(Start: 58 @686 has 51 MA's), (73, 782), (95, 812), (108, 848),

Gene: AlainaMarie\_1 Start: 211, Stop: 468, Start Num: 52

Candidate Starts for AlainaMarie\_1:

(Start: 47 @196 has 2 MA's), (Start: 52 @211 has 39 MA's), (80, 340), (103, 394),

Gene: AlishaPH\_4 Start: 726, Stop: 959, Start Num: 57

Candidate Starts for AlishaPH\_4:

(Start: 57 @726 has 122 MA's), (72, 813), (95, 867), (103, 885), (112, 903),

Gene: AlleyCat\_3 Start: 542, Stop: 772, Start Num: 58

Candidate Starts for AlleyCat\_3:

(43, 491), (Start: 58 @542 has 51 MA's), (59, 563), (Start: 60 @566 has 4 MA's), (73, 626), (86, 653), (90, 662), (100, 686), (112, 716), (118, 767),

Gene: Aloe25\_1 Start: 211, Stop: 468, Start Num: 52

Candidate Starts for Aloe25\_1:

(Start: 47 @196 has 2 MA's), (Start: 52 @211 has 39 MA's), (96, 379), (103, 394),

Gene: Alpacados\_39 Start: 30016, Stop: 29783, Start Num: 51

Candidate Starts for Alpacados\_39:

(Start: 51 @30016 has 8 MA's), (Start: 57 @30004 has 122 MA's), (92, 29884),

Gene: Amgine\_2 Start: 192, Stop: 413, Start Num: 57

Candidate Starts for Amgine\_2:

(Start: 57 @192 has 122 MA's), (73, 282), (90, 300), (95, 312),

Gene: Amohndition\_2 Start: 207, Stop: 419, Start Num: 58

Candidate Starts for Amohndition\_2:

(Start: 58 @207 has 51 MA's), (71, 279), (102, 342),

Gene: Anaya\_4 Start: 727, Stop: 945, Start Num: 58

Candidate Starts for Anaya\_4:

(Start: 58 @727 has 51 MA's), (73, 823), (90, 841), (95, 853), (108, 889),

Gene: Angelica\_4 Start: 727, Stop: 945, Start Num: 58

Candidate Starts for Angelica\_4:

(Start: 58 @727 has 51 MA's), (73, 823), (95, 853), (108, 889),

Gene: Anma\_4 Start: 691, Stop: 903, Start Num: 58

Candidate Starts for Anma\_4:

(Start: 58 @691 has 51 MA's), (Start: 60 @715 has 4 MA's), (106, 838),

Gene: Apocalypse\_4 Start: 727, Stop: 954, Start Num: 57

Candidate Starts for Apocalypse\_4:

(Start: 57 @727 has 122 MA's), (73, 823), (108, 892),

Gene: Applecrisp\_3 Start: 522, Stop: 743, Start Num: 57

Candidate Starts for Applecrisp\_3:  
(Start: 57 @522 has 122 MA's), (73, 612), (90, 630), (95, 642),

Gene: Arataki\_1 Start: 212, Stop: 469, Start Num: 52  
Candidate Starts for Arataki\_1:  
(Start: 38 @152 has 2 MA's), (Start: 47 @197 has 2 MA's), (Start: 52 @212 has 39 MA's), (103, 395),  
(111, 410),

Gene: ArtetaBall\_1 Start: 212, Stop: 469, Start Num: 52  
Candidate Starts for ArtetaBall\_1:  
(Start: 38 @152 has 2 MA's), (Start: 47 @197 has 2 MA's), (Start: 52 @212 has 39 MA's), (103, 395),

Gene: Artorias\_1 Start: 221, Stop: 445, Start Num: 57  
Candidate Starts for Artorias\_1:  
(Start: 57 @221 has 122 MA's), (71, 305),

Gene: Asayake\_4 Start: 727, Stop: 963, Start Num: 57  
Candidate Starts for Asayake\_4:  
(Start: 57 @727 has 122 MA's), (86, 850), (103, 889), (112, 907),

Gene: Atiba\_4 Start: 703, Stop: 939, Start Num: 57  
Candidate Starts for Atiba\_4:  
(Start: 57 @703 has 122 MA's), (86, 826), (103, 865), (112, 883),

Gene: Avazak\_1 Start: 221, Stop: 445, Start Num: 57  
Candidate Starts for Avazak\_1:  
(Start: 57 @221 has 122 MA's),

Gene: BEEST\_4 Start: 727, Stop: 963, Start Num: 57  
Candidate Starts for BEEST\_4:  
(Start: 57 @727 has 122 MA's), (86, 850), (103, 889), (112, 907),

Gene: BGlluviae\_4 Start: 727, Stop: 963, Start Num: 57  
Candidate Starts for BGlluviae\_4:  
(Start: 57 @727 has 122 MA's), (86, 850), (103, 889), (112, 907),

Gene: BaghaKamala\_4 Start: 703, Stop: 930, Start Num: 57  
Candidate Starts for BaghaKamala\_4:  
(Start: 57 @703 has 122 MA's), (73, 799), (108, 868),

Gene: Bakery\_84 Start: 55024, Stop: 55362, Start Num: 54  
Candidate Starts for Bakery\_84:  
(13, 54715), (16, 54733), (24, 54826), (Start: 54 @55024 has 24 MA's), (72, 55117), (95, 55180), (96,  
55183), (121, 55342),

Gene: BananenDer11\_3 Start: 516, Stop: 746, Start Num: 58  
Candidate Starts for BananenDer11\_3:  
(Start: 58 @516 has 51 MA's), (59, 537), (Start: 60 @540 has 4 MA's), (86, 627), (90, 636), (95, 648),  
(118, 741),

Gene: Baoshan\_107 Start: 63214, Stop: 63477, Start Num: 52  
Candidate Starts for Baoshan\_107:

(Start: 52 @63214 has 39 MA's), (Start: 60 @63247 has 4 MA's), (67, 63283), (73, 63322), (79, 63349), (87, 63367), (90, 63373), (92, 63379), (103, 63403),

Gene: BarrelRoll\_4 Start: 727, Stop: 954, Start Num: 57

Candidate Starts for BarrelRoll\_4:

(Start: 57 @727 has 122 MA's), (73, 823), (108, 892),

Gene: Beezoo\_4 Start: 724, Stop: 942, Start Num: 58

Candidate Starts for Beezoo\_4:

(Start: 58 @724 has 51 MA's), (73, 820), (95, 850), (108, 886),

Gene: Bella96\_4 Start: 691, Stop: 915, Start Num: 57

Candidate Starts for Bella96\_4:

(Start: 57 @691 has 122 MA's), (73, 787), (108, 853),

Gene: Belladonna\_4 Start: 727, Stop: 963, Start Num: 57

Candidate Starts for Belladonna\_4:

(Start: 57 @727 has 122 MA's), (86, 850), (103, 889), (112, 907),

Gene: Bern\_4 Start: 687, Stop: 911, Start Num: 57

Candidate Starts for Bern\_4:

(Start: 57 @687 has 122 MA's), (73, 783), (108, 849),

Gene: BetterYeti\_1 Start: 211, Stop: 468, Start Num: 52

Candidate Starts for BetterYeti\_1:

(Start: 47 @196 has 2 MA's), (Start: 52 @211 has 39 MA's), (96, 379), (103, 394),

Gene: Blizzard\_4 Start: 727, Stop: 963, Start Num: 57

Candidate Starts for Blizzard\_4:

(Start: 57 @727 has 122 MA's), (86, 850), (103, 889), (112, 907),

Gene: BluerMoon\_1 Start: 211, Stop: 468, Start Num: 52

Candidate Starts for BluerMoon\_1:

(Start: 47 @196 has 2 MA's), (Start: 52 @211 has 39 MA's), (80, 340), (103, 394),

Gene: BobbyDazzler\_40 Start: 30078, Stop: 29857, Start Num: 57

Candidate Starts for BobbyDazzler\_40:

(Start: 51 @30090 has 8 MA's), (Start: 57 @30078 has 122 MA's), (92, 29958),

Gene: Boiiii\_4 Start: 727, Stop: 963, Start Num: 57

Candidate Starts for Boiiii\_4:

(Start: 57 @727 has 122 MA's), (86, 850), (103, 889), (112, 907),

Gene: Bonanza\_40 Start: 30006, Stop: 29785, Start Num: 57

Candidate Starts for Bonanza\_40:

(Start: 51 @30018 has 8 MA's), (Start: 57 @30006 has 122 MA's), (92, 29886),

Gene: Bradshaw\_40 Start: 30044, Stop: 29811, Start Num: 51

Candidate Starts for Bradshaw\_40:

(Start: 51 @30044 has 8 MA's), (Start: 57 @30032 has 122 MA's), (92, 29912),

Gene: BrainDrainer\_113 Start: 63738, Stop: 63971, Start Num: 60

Candidate Starts for BrainDrainer\_113:

(Start: 52 @63705 has 39 MA's), (Start: 60 @63738 has 4 MA's), (71, 63798), (75, 63822), (86, 63858), (90, 63867), (92, 63873), (103, 63897), (112, 63915),

Gene: Bromden\_112 Start: 64818, Stop: 65084, Start Num: 52

Candidate Starts for Bromden\_112:

(Start: 52 @64818 has 39 MA's), (Start: 60 @64851 has 4 MA's), (71, 64911), (75, 64935), (86, 64971), (90, 64980), (92, 64986), (103, 65010), (112, 65028),

Gene: Bryler\_3 Start: 658, Stop: 882, Start Num: 57

Candidate Starts for Bryler\_3:

(Start: 57 @658 has 122 MA's), (73, 754), (90, 772), (95, 784), (108, 820),

Gene: Bugg\_1 Start: 221, Stop: 445, Start Num: 57

Candidate Starts for Bugg\_1:

(Start: 57 @221 has 122 MA's), (71, 305),

Gene: Burley\_1 Start: 211, Stop: 468, Start Num: 52

Candidate Starts for Burley\_1:

(30, 130), (Start: 38 @151 has 2 MA's), (Start: 47 @196 has 2 MA's), (Start: 52 @211 has 39 MA's), (103, 394),

Gene: CREW\_4 Start: 727, Stop: 963, Start Num: 57

Candidate Starts for CREW\_4:

(Start: 57 @727 has 122 MA's), (86, 850), (103, 889), (112, 907),

Gene: CWormy\_1 Start: 212, Stop: 469, Start Num: 52

Candidate Starts for CWormy\_1:

(Start: 38 @152 has 2 MA's), (Start: 47 @197 has 2 MA's), (Start: 52 @212 has 39 MA's), (103, 395), (111, 410),

Gene: Cafasso\_95 Start: 55818, Stop: 56057, Start Num: 50

Candidate Starts for Cafasso\_95:

(Start: 50 @55818 has 1 MA's), (Start: 60 @55854 has 4 MA's), (95, 55965), (112, 56001),

Gene: Cain\_3 Start: 658, Stop: 882, Start Num: 57

Candidate Starts for Cain\_3:

(Start: 57 @658 has 122 MA's), (73, 754), (90, 772), (95, 784), (108, 820),

Gene: CallaLilly\_4 Start: 703, Stop: 930, Start Num: 57

Candidate Starts for CallaLilly\_4:

(Start: 57 @703 has 122 MA's), (73, 799), (108, 868),

Gene: Capricorn\_4 Start: 727, Stop: 963, Start Num: 57

Candidate Starts for Capricorn\_4:

(Start: 57 @727 has 122 MA's), (86, 850), (103, 889), (112, 907),

Gene: Captrips\_1 Start: 221, Stop: 445, Start Num: 57

Candidate Starts for Captrips\_1:

(Start: 57 @221 has 122 MA's),

Gene: Capybara\_1 Start: 221, Stop: 445, Start Num: 57

Candidate Starts for Capybara\_1:

(Start: 57 @221 has 122 MA's),

Gene: CaseJules\_4 Start: 727, Stop: 963, Start Num: 57

Candidate Starts for CaseJules\_4:

(Start: 57 @727 has 122 MA's), (86, 850), (103, 889), (112, 907),

Gene: Chaser\_110 Start: 63185, Stop: 63451, Start Num: 52

Candidate Starts for Chaser\_110:

(Start: 52 @63185 has 39 MA's), (Start: 60 @63218 has 4 MA's), (71, 63278), (75, 63302), (86, 63338), (90, 63347), (92, 63353), (103, 63377), (112, 63395),

Gene: Chavito\_4 Start: 744, Stop: 956, Start Num: 58

Candidate Starts for Chavito\_4:

(Start: 58 @744 has 51 MA's), (106, 891),

Gene: CheetoDust\_4 Start: 703, Stop: 939, Start Num: 57

Candidate Starts for CheetoDust\_4:

(Start: 57 @703 has 122 MA's), (86, 826), (103, 865), (112, 883),

Gene: CherryCola\_79 Start: 53272, Stop: 53610, Start Num: 54

Candidate Starts for CherryCola\_79:

(13, 52963), (16, 52981), (24, 53074), (Start: 54 @53272 has 24 MA's), (72, 53365), (95, 53428), (96, 53431), (121, 53590),

Gene: ChickyNuggy\_1 Start: 221, Stop: 445, Start Num: 57

Candidate Starts for ChickyNuggy\_1:

(Start: 57 @221 has 122 MA's),

Gene: Chikenjars\_1 Start: 211, Stop: 468, Start Num: 52

Candidate Starts for Chikenjars\_1:

(Start: 47 @196 has 2 MA's), (Start: 52 @211 has 39 MA's), (80, 340), (103, 394),

Gene: Chris\_3 Start: 662, Stop: 886, Start Num: 63

Candidate Starts for Chris\_3:

(Start: 63 @662 has 3 MA's), (66, 686), (90, 782), (95, 794), (97, 800), (105, 818),

Gene: ChutneyChips\_112 Start: 63741, Stop: 63974, Start Num: 60

Candidate Starts for ChutneyChips\_112:

(Start: 52 @63708 has 39 MA's), (Start: 60 @63741 has 4 MA's), (71, 63801), (75, 63825), (86, 63861), (92, 63876), (103, 63900), (112, 63918),

Gene: Citrus\_1 Start: 211, Stop: 468, Start Num: 52

Candidate Starts for Citrus\_1:

(Start: 47 @196 has 2 MA's), (Start: 52 @211 has 39 MA's), (80, 340), (103, 394),

Gene: Clipper\_4 Start: 703, Stop: 939, Start Num: 57

Candidate Starts for Clipper\_4:

(Start: 57 @703 has 122 MA's), (86, 826), (103, 865), (112, 883),

Gene: Collard\_3 Start: 516, Stop: 746, Start Num: 58

Candidate Starts for Collard\_3:

(Start: 58 @516 has 51 MA's), (59, 537), (Start: 60 @540 has 4 MA's), (86, 627), (90, 636), (95, 648), (118, 741),

Gene: Colossa\_71 Start: 43019, Stop: 43357, Start Num: 54  
Candidate Starts for Colossa\_71:  
(Start: 54 @43019 has 24 MA's), (Start: 60 @43049 has 4 MA's), (115, 43259), (117, 43265), (120, 43283),

Gene: Conley\_1 Start: 221, Stop: 445, Start Num: 57  
Candidate Starts for Conley\_1:  
(Start: 57 @221 has 122 MA's), (72, 308), (96, 350),

Gene: CosmicSans\_40 Start: 30032, Stop: 29811, Start Num: 57  
Candidate Starts for CosmicSans\_40:  
(Start: 51 @30044 has 8 MA's), (Start: 57 @30032 has 122 MA's), (92, 29912),

Gene: CoveyB\_80 Start: 52764, Stop: 53102, Start Num: 54  
Candidate Starts for CoveyB\_80:  
(13, 52455), (16, 52473), (24, 52566), (Start: 54 @52764 has 24 MA's), (72, 52857), (95, 52920), (96, 52923), (121, 53082),

Gene: CrimD\_4 Start: 703, Stop: 930, Start Num: 57  
Candidate Starts for CrimD\_4:  
(Start: 57 @703 has 122 MA's), (73, 799), (95, 832), (108, 868),

Gene: Crocheter\_1 Start: 152, Stop: 469, Start Num: 38  
Candidate Starts for Crocheter\_1:  
(Start: 38 @152 has 2 MA's), (Start: 47 @197 has 2 MA's), (Start: 52 @212 has 39 MA's), (103, 395), (111, 410),

Gene: Crossroads\_109 Start: 63279, Stop: 63491, Start Num: 60  
Candidate Starts for Crossroads\_109:  
(Start: 52 @63246 has 39 MA's), (Start: 60 @63279 has 4 MA's), (68, 63321), (69, 63324), (76, 63357), (88, 63384), (90, 63387), (92, 63393), (95, 63399), (96, 63402), (112, 63435),

Gene: Curiosium\_5 Start: 989, Stop: 1216, Start Num: 58  
Candidate Starts for Curiosium\_5:  
(42, 938), (49, 974), (Start: 58 @989 has 51 MA's), (73, 1085), (108, 1154),

Gene: Dadosky\_3 Start: 542, Stop: 772, Start Num: 58  
Candidate Starts for Dadosky\_3:  
(43, 491), (Start: 58 @542 has 51 MA's), (59, 563), (Start: 60 @566 has 4 MA's), (73, 626), (86, 653), (90, 662), (100, 686), (112, 716), (118, 767),

Gene: Dalmuri\_4 Start: 727, Stop: 963, Start Num: 57  
Candidate Starts for Dalmuri\_4:  
(Start: 57 @727 has 122 MA's), (86, 850), (103, 889), (112, 907),

Gene: Dancer\_1 Start: 221, Stop: 445, Start Num: 57  
Candidate Starts for Dancer\_1:  
(Start: 57 @221 has 122 MA's), (71, 305),

Gene: Danyall\_80 Start: 52458, Stop: 52796, Start Num: 54  
Candidate Starts for Danyall\_80:  
(16, 52167), (24, 52260), (Start: 54 @52458 has 24 MA's), (72, 52551), (95, 52614), (96, 52617), (121, 52776),

Gene: DartGoblin\_4 Start: 691, Stop: 915, Start Num: 57  
Candidate Starts for DartGoblin\_4:

(Start: 57 @691 has 122 MA's), (73, 787), (108, 853),

Gene: DarthP\_2 Start: 207, Stop: 419, Start Num: 58  
Candidate Starts for DarthP\_2:

(Start: 58 @207 has 51 MA's), (71, 279), (102, 342),

Gene: Dartin\_4 Start: 742, Stop: 954, Start Num: 58  
Candidate Starts for Dartin\_4:

(Start: 58 @742 has 51 MA's), (102, 877), (105, 883),

Gene: DarwinJr\_3 Start: 1710, Stop: 1952, Start Num: 54  
Candidate Starts for DarwinJr\_3:

(12, 1392), (20, 1464), (24, 1512), (27, 1605), (29, 1623), (39, 1647), (41, 1662), (45, 1686), (Start: 54 @1710 has 24 MA's), (74, 1815), (88, 1845), (90, 1848), (103, 1878), (112, 1896),

Gene: Deby\_4 Start: 727, Stop: 945, Start Num: 58

Candidate Starts for Deby\_4:

(Start: 58 @727 has 51 MA's), (73, 823), (95, 853), (108, 889),

Gene: Demure\_1 Start: 212, Stop: 469, Start Num: 52

Candidate Starts for Demure\_1:

(Start: 38 @152 has 2 MA's), (Start: 47 @197 has 2 MA's), (Start: 52 @212 has 39 MA's), (103, 395), (111, 410),

Gene: Devera\_4 Start: 703, Stop: 930, Start Num: 57

Candidate Starts for Devera\_4:

(Start: 57 @703 has 122 MA's), (73, 799),

Gene: Dialga\_1 Start: 212, Stop: 469, Start Num: 52

Candidate Starts for Dialga\_1:

(Start: 38 @152 has 2 MA's), (Start: 47 @197 has 2 MA's), (Start: 52 @212 has 39 MA's), (103, 395), (111, 410),

Gene: Dmitri\_20 Start: 19193, Stop: 19450, Start Num: 60

Candidate Starts for Dmitri\_20:

(1, 18281), (8, 18767), (36, 19091), (59, 19190), (Start: 60 @19193 has 4 MA's), (Start: 62 @19211 has 1 MA's), (81, 19316), (94, 19346), (101, 19361),

Gene: Dole\_4 Start: 703, Stop: 930, Start Num: 57

Candidate Starts for Dole\_4:

(Start: 57 @703 has 122 MA's), (73, 799),

Gene: DoubleChamp\_3 Start: 537, Stop: 746, Start Num: 59

Candidate Starts for DoubleChamp\_3:

(Start: 58 @516 has 51 MA's), (59, 537), (Start: 60 @540 has 4 MA's), (86, 627), (90, 636), (95, 648), (118, 741),

Gene: Douge\_111 Start: 62989, Stop: 63255, Start Num: 52

Candidate Starts for Douge\_111:

(Start: 52 @62989 has 39 MA's), (Start: 60 @63022 has 4 MA's), (71, 63082), (75, 63106), (86, 63142), (90, 63151), (92, 63157), (103, 63181), (112, 63199),

Gene: Douzhi\_111 Start: 63394, Stop: 63660, Start Num: 52

Candidate Starts for Douzhi\_111:

(Start: 52 @63394 has 39 MA's), (Start: 60 @63427 has 4 MA's), (71, 63487), (75, 63511), (86, 63547), (90, 63556), (92, 63562), (103, 63586), (112, 63604),

Gene: DrHayes\_4 Start: 691, Stop: 903, Start Num: 58

Candidate Starts for DrHayes\_4:

(Start: 58 @691 has 51 MA's), (Start: 60 @715 has 4 MA's), (106, 838),

Gene: Duffington\_1 Start: 211, Stop: 468, Start Num: 52

Candidate Starts for Duffington\_1:

(Start: 47 @196 has 2 MA's), (Start: 52 @211 has 39 MA's), (80, 340), (103, 394),

Gene: Durfee\_4 Start: 727, Stop: 963, Start Num: 57

Candidate Starts for Durfee\_4:

(Start: 57 @727 has 122 MA's), (86, 850), (103, 889), (112, 907),

Gene: DyoEdafos\_114 Start: 63914, Stop: 64108, Start Num: 60

Candidate Starts for DyoEdafos\_114:

(Start: 52 @63878 has 39 MA's), (Start: 60 @63914 has 4 MA's), (72, 63977), (73, 63986), (82, 64004), (84, 64010), (103, 64034), (112, 64052),

Gene: Eddiemania\_1 Start: 211, Stop: 468, Start Num: 52

Candidate Starts for Eddiemania\_1:

(Start: 38 @151 has 2 MA's), (Start: 47 @196 has 2 MA's), (Start: 52 @211 has 39 MA's), (80, 340), (103, 394),

Gene: Edugator\_3 Start: 542, Stop: 772, Start Num: 58

Candidate Starts for Edugator\_3:

(43, 491), (Start: 58 @542 has 51 MA's), (59, 563), (Start: 60 @566 has 4 MA's), (73, 626), (86, 653), (90, 662), (100, 686), (112, 716), (118, 767),

Gene: Efra2\_4 Start: 696, Stop: 908, Start Num: 58

Candidate Starts for Efra2\_4:

(Start: 58 @696 has 51 MA's), (64, 741), (106, 843),

Gene: Egi03\_78 Start: 52324, Stop: 52662, Start Num: 54

Candidate Starts for Egi03\_78:

(6, 51808), (13, 52015), (16, 52033), (24, 52126), (Start: 54 @52324 has 24 MA's), (72, 52417), (95, 52480), (96, 52483), (121, 52642),

Gene: EhyElimayoE\_16 Start: 8275, Stop: 8580, Start Num: 52

Candidate Starts for EhyElimayoE\_16:

(2, 7633), (3, 7645), (5, 7672), (43, 8239), (Start: 52 @8275 has 39 MA's), (Start: 60 @8308 has 4 MA's), (66, 8347), (78, 8416), (83, 8431), (116, 8539), (119, 8551),

Gene: Ekdilam\_2 Start: 206, Stop: 415, Start Num: 58

Candidate Starts for Ekdilam\_2:

(Start: 58 @206 has 51 MA's),

Gene: Ellie\_2 Start: 192, Stop: 413, Start Num: 57  
Candidate Starts for Ellie\_2:  
(Start: 57 @192 has 122 MA's), (73, 282), (90, 300), (95, 312),

Gene: Emerson\_4 Start: 727, Stop: 960, Start Num: 57  
Candidate Starts for Emerson\_4:  
(Start: 57 @727 has 122 MA's), (72, 814), (95, 868), (103, 886), (112, 904),

Gene: EndAve\_1 Start: 211, Stop: 468, Start Num: 52  
Candidate Starts for EndAve\_1:  
(Start: 47 @196 has 2 MA's), (Start: 52 @211 has 39 MA's), (80, 340), (103, 394),

Gene: Estes\_101 Start: 56269, Stop: 56514, Start Num: 56  
Candidate Starts for Estes\_101:  
(39, 56203), (Start: 56 @56269 has 6 MA's), (90, 56410), (95, 56422), (96, 56425), (103, 56440), (112, 56458),

Gene: Evamon\_79 Start: 52689, Stop: 53027, Start Num: 54  
Candidate Starts for Evamon\_79:  
(4, 52059), (13, 52380), (16, 52398), (24, 52491), (Start: 54 @52689 has 24 MA's), (72, 52782), (95, 52845), (96, 52848), (121, 53007),

Gene: FarmResident\_113 Start: 63407, Stop: 63673, Start Num: 52  
Candidate Starts for FarmResident\_113:  
(Start: 52 @63407 has 39 MA's), (Start: 60 @63440 has 4 MA's), (75, 63524), (86, 63560), (90, 63569), (92, 63575), (103, 63599), (112, 63617),

Gene: Fefferhead\_2 Start: 192, Stop: 413, Start Num: 57  
Candidate Starts for Fefferhead\_2:  
(Start: 57 @192 has 122 MA's), (73, 282), (90, 300), (95, 312),

Gene: Feyre\_3 Start: 517, Stop: 747, Start Num: 58  
Candidate Starts for Feyre\_3:  
(Start: 58 @517 has 51 MA's), (59, 538), (Start: 60 @541 has 4 MA's), (86, 628), (90, 637), (95, 649), (106, 682), (118, 742),

Gene: Figliar\_1 Start: 196, Stop: 468, Start Num: 47  
Candidate Starts for Figliar\_1:  
(Start: 47 @196 has 2 MA's), (Start: 52 @211 has 39 MA's), (80, 340), (103, 394),

Gene: Football\_1 Start: 221, Stop: 445, Start Num: 57  
Candidate Starts for Football\_1:  
(Start: 57 @221 has 122 MA's),

Gene: FortCran\_1 Start: 221, Stop: 445, Start Num: 57  
Candidate Starts for FortCran\_1:  
(Start: 57 @221 has 122 MA's), (71, 305),

Gene: Frankenweenie\_22 Start: 10117, Stop: 10422, Start Num: 52  
Candidate Starts for Frankenweenie\_22:  
(43, 10081), (Start: 52 @10117 has 39 MA's), (Start: 60 @10150 has 4 MA's), (78, 10258), (83, 10273), (116, 10381), (119, 10393),

Gene: Ganymede\_4 Start: 703, Stop: 939, Start Num: 57

Candidate Starts for Ganymede\_4:

(Start: 57 @703 has 122 MA's), (86, 826), (103, 865), (112, 883),

Gene: GardenSalsa\_101 Start: 56348, Stop: 56605, Start Num: 56

Candidate Starts for GardenSalsa\_101:

(39, 56282), (Start: 56 @56348 has 6 MA's), (90, 56501), (95, 56513), (103, 56531), (112, 56549),

Gene: Gengar\_3 Start: 542, Stop: 772, Start Num: 58

Candidate Starts for Gengar\_3:

(43, 491), (Start: 58 @542 has 51 MA's), (59, 563), (Start: 60 @566 has 4 MA's), (86, 653), (90, 662), (95, 674), (118, 767),

Gene: Gezellig\_76 Start: 52517, Stop: 52855, Start Num: 54

Candidate Starts for Gezellig\_76:

(13, 52208), (16, 52226), (24, 52319), (Start: 54 @52517 has 24 MA's), (72, 52610), (95, 52673), (96, 52676), (121, 52835),

Gene: Gill\_1 Start: 221, Stop: 445, Start Num: 57

Candidate Starts for Gill\_1:

(Start: 57 @221 has 122 MA's),

Gene: Glintora\_1 Start: 211, Stop: 468, Start Num: 52

Candidate Starts for Glintora\_1:

(Start: 47 @196 has 2 MA's), (Start: 52 @211 has 39 MA's), (80, 340), (103, 394),

Gene: Gollum\_40 Start: 30042, Stop: 29809, Start Num: 51

Candidate Starts for Gollum\_40:

(Start: 51 @30042 has 8 MA's), (Start: 57 @30030 has 122 MA's), (92, 29910),

Gene: Gravy\_1 Start: 221, Stop: 445, Start Num: 57

Candidate Starts for Gravy\_1:

(Start: 57 @221 has 122 MA's),

Gene: Guanica15\_4 Start: 699, Stop: 923, Start Num: 58

Candidate Starts for Guanica15\_4:

(Start: 58 @699 has 51 MA's), (Start: 60 @723 has 4 MA's), (74, 786), (106, 858), (107, 861),

Gene: Guillsminger\_3 Start: 517, Stop: 747, Start Num: 58

Candidate Starts for Guillsminger\_3:

(Start: 58 @517 has 51 MA's), (59, 538), (Start: 60 @541 has 4 MA's), (86, 628), (90, 637), (95, 649), (106, 682), (118, 742),

Gene: Gusicorn\_1 Start: 211, Stop: 468, Start Num: 52

Candidate Starts for Gusicorn\_1:

(Start: 47 @196 has 2 MA's), (Start: 52 @211 has 39 MA's), (96, 379), (103, 394),

Gene: Halo3\_77 Start: 53102, Stop: 53440, Start Num: 54

Candidate Starts for Halo3\_77:

(13, 52793), (16, 52811), (24, 52904), (Start: 54 @53102 has 24 MA's), (72, 53195), (95, 53258), (96, 53261), (121, 53420),

Gene: Hammy\_2 Start: 207, Stop: 416, Start Num: 58

Candidate Starts for Hammy\_2:  
(Start: 58 @207 has 51 MA's), (64, 249),

Gene: HedwigODU\_4 Start: 727, Stop: 954, Start Num: 57  
Candidate Starts for HedwigODU\_4:  
(Start: 57 @727 has 122 MA's), (73, 823), (108, 892),

Gene: Heftyboy\_3 Start: 538, Stop: 768, Start Num: 58  
Candidate Starts for Heftyboy\_3:  
(43, 487), (Start: 58 @538 has 51 MA's), (59, 559), (Start: 60 @562 has 4 MA's), (86, 649), (90, 658),  
(95, 670), (106, 703), (118, 763),

Gene: Hiro\_40 Start: 30292, Stop: 30071, Start Num: 57  
Candidate Starts for Hiro\_40:  
(Start: 51 @30304 has 8 MA's), (Start: 57 @30292 has 122 MA's), (92, 30172),

Gene: Homura\_4 Start: 727, Stop: 963, Start Num: 57  
Candidate Starts for Homura\_4:  
(Start: 57 @727 has 122 MA's), (86, 850), (103, 889), (112, 907),

Gene: Hortihabitatio\_1 Start: 220, Stop: 444, Start Num: 57  
Candidate Starts for Hortihabitatio\_1:  
(Start: 57 @220 has 122 MA's),

Gene: Hurricane\_2 Start: 191, Stop: 418, Start Num: 58  
Candidate Starts for Hurricane\_2:  
(Start: 58 @191 has 51 MA's), (73, 287), (95, 320),

Gene: Hydrus\_1 Start: 211, Stop: 468, Start Num: 52  
Candidate Starts for Hydrus\_1:  
(Start: 38 @151 has 2 MA's), (Start: 47 @196 has 2 MA's), (Start: 52 @211 has 39 MA's), (80, 340),  
(103, 394),

Gene: Hyperbowlee\_4 Start: 727, Stop: 963, Start Num: 57  
Candidate Starts for Hyperbowlee\_4:  
(Start: 57 @727 has 122 MA's), (86, 850), (103, 889), (112, 907),

Gene: Illumine\_4 Start: 703, Stop: 930, Start Num: 57  
Candidate Starts for Illumine\_4:  
(Start: 57 @703 has 122 MA's), (73, 799),

Gene: Inky\_4 Start: 727, Stop: 963, Start Num: 57  
Candidate Starts for Inky\_4:  
(Start: 57 @727 has 122 MA's), (86, 850), (103, 889), (112, 907),

Gene: InvictusManeo\_3 Start: 542, Stop: 754, Start Num: 58  
Candidate Starts for InvictusManeo\_3:  
(Start: 58 @542 has 51 MA's), (73, 626), (95, 659), (104, 683), (106, 692), (107, 695), (112, 701),

Gene: JAWS\_4 Start: 727, Stop: 954, Start Num: 57  
Candidate Starts for JAWS\_4:  
(Start: 57 @727 has 122 MA's), (73, 823), (108, 892),

Gene: Jarvi\_4 Start: 727, Stop: 963, Start Num: 57  
Candidate Starts for Jarvi\_4:  
(Start: 57 @727 has 122 MA's), (86, 850), (103, 889), (112, 907),

Gene: Jayhawk\_4 Start: 727, Stop: 954, Start Num: 57  
Candidate Starts for Jayhawk\_4:  
(Start: 57 @727 has 122 MA's), (73, 823), (108, 892),

Gene: Jeckyll\_4 Start: 727, Stop: 963, Start Num: 57  
Candidate Starts for Jeckyll\_4:  
(Start: 57 @727 has 122 MA's), (86, 850), (103, 889), (112, 907),

Gene: Jodelie19\_1 Start: 199, Stop: 468, Start Num: 48  
Candidate Starts for Jodelie19\_1:  
(Start: 47 @196 has 2 MA's), (Start: 48 @199 has 1 MA's), (Start: 52 @211 has 39 MA's), (80, 340), (103, 394),

Gene: Joy99\_4 Start: 703, Stop: 930, Start Num: 57  
Candidate Starts for Joy99\_4:  
(Start: 57 @703 has 122 MA's), (73, 799), (108, 868),

Gene: JulesRay\_1 Start: 221, Stop: 445, Start Num: 57  
Candidate Starts for JulesRay\_1:  
(Start: 57 @221 has 122 MA's), (71, 305),

Gene: JustBecause\_14 Start: 7426, Stop: 7731, Start Num: 52  
Candidate Starts for JustBecause\_14:  
(43, 7390), (Start: 52 @7426 has 39 MA's), (Start: 60 @7459 has 4 MA's), (72, 7534), (73, 7543), (89, 7597), (119, 7702),

Gene: Kela\_14 Start: 7417, Stop: 7722, Start Num: 52  
Candidate Starts for Kela\_14:  
(43, 7381), (Start: 52 @7417 has 39 MA's), (Start: 60 @7450 has 4 MA's), (72, 7525), (73, 7534), (78, 7558), (89, 7588), (119, 7693),

Gene: Kenosha\_1 Start: 212, Stop: 469, Start Num: 52  
Candidate Starts for Kenosha\_1:  
(Start: 38 @152 has 2 MA's), (Start: 47 @197 has 2 MA's), (Start: 52 @212 has 39 MA's), (103, 395),

Gene: Kerry\_1 Start: 221, Stop: 445, Start Num: 57  
Candidate Starts for Kerry\_1:  
(Start: 57 @221 has 122 MA's),

Gene: Keshu\_2 Start: 191, Stop: 412, Start Num: 57  
Candidate Starts for Keshu\_2:  
(Start: 57 @191 has 122 MA's), (90, 299),

Gene: KiSi\_3 Start: 624, Stop: 842, Start Num: 58  
Candidate Starts for KiSi\_3:  
(Start: 58 @624 has 51 MA's), (73, 720), (90, 738), (95, 750), (103, 768), (109, 786), (114, 801),

Gene: Kiko\_21 Start: 18413, Stop: 18652, Start Num: 62  
Candidate Starts for Kiko\_21:

(31, 18278), (Start: 62 @18413 has 1 MA's), (73, 18497), (81, 18518), (94, 18548), (101, 18563), (111, 18596),

Gene: KimmyK\_79 Start: 52964, Stop: 53302, Start Num: 54

Candidate Starts for KimmyK\_79:

(13, 52655), (16, 52673), (24, 52766), (Start: 54 @52964 has 24 MA's), (72, 53057), (95, 53120), (96, 53123), (121, 53282),

Gene: KleverKiS\_90 Start: 54555, Stop: 54785, Start Num: 57

Candidate Starts for KleverKiS\_90:

(Start: 57 @54555 has 122 MA's), (73, 54651), (103, 54711),

Gene: Kradal\_16 Start: 8275, Stop: 8580, Start Num: 52

Candidate Starts for Kradal\_16:

(2, 7633), (3, 7645), (5, 7672), (43, 8239), (Start: 52 @8275 has 39 MA's), (Start: 60 @8308 has 4 MA's), (66, 8347), (78, 8416), (83, 8431), (116, 8539), (119, 8551),

Gene: Kratio\_2 Start: 299, Stop: 511, Start Num: 56

Candidate Starts for Kratio\_2:

(Start: 56 @299 has 6 MA's), (73, 383), (95, 416), (104, 440), (106, 449), (107, 452), (112, 458),

Gene: Krishelle\_40 Start: 30392, Stop: 30171, Start Num: 57

Candidate Starts for Krishelle\_40:

(Start: 51 @30404 has 8 MA's), (Start: 57 @30392 has 122 MA's), (92, 30272),

Gene: Kromp\_24 Start: 21907, Stop: 22215, Start Num: 46

Candidate Starts for Kromp\_24:

(11, 21604), (14, 21637), (26, 21817), (Start: 46 @21907 has 1 MA's), (Start: 57 @21934 has 122 MA's), (Start: 60 @21961 has 4 MA's), (89, 22093), (113, 22159),

Gene: Kropertea\_105 Start: 63152, Stop: 63346, Start Num: 60

Candidate Starts for Kropertea\_105:

(Start: 52 @63116 has 39 MA's), (Start: 60 @63152 has 4 MA's), (72, 63215), (73, 63224), (82, 63242), (84, 63248), (103, 63272), (112, 63290),

Gene: LastHope\_4 Start: 698, Stop: 925, Start Num: 57

Candidate Starts for LastHope\_4:

(Start: 57 @698 has 122 MA's), (Start: 60 @722 has 4 MA's), (73, 794), (108, 863),

Gene: LaterM\_4 Start: 703, Stop: 936, Start Num: 57

Candidate Starts for LaterM\_4:

(Start: 57 @703 has 122 MA's), (95, 844), (103, 862),

Gene: Lavahound\_2 Start: 192, Stop: 413, Start Num: 57

Candidate Starts for Lavahound\_2:

(Start: 57 @192 has 122 MA's), (73, 282), (90, 300), (95, 312),

Gene: LeMond\_3 Start: 624, Stop: 842, Start Num: 58

Candidate Starts for LeMond\_3:

(15, 324), (Start: 58 @624 has 51 MA's), (73, 720), (90, 738), (95, 750), (103, 768), (109, 786), (114, 801),

Gene: Lea83\_2 Start: 191, Stop: 418, Start Num: 58

Candidate Starts for Lea83\_2:

(Start: 58 @191 has 51 MA's), (73, 287), (90, 308), (95, 320),

Gene: Leston\_3 Start: 542, Stop: 772, Start Num: 58

Candidate Starts for Leston\_3:

(Start: 58 @542 has 51 MA's), (59, 563), (Start: 60 @566 has 4 MA's), (86, 653), (90, 662), (95, 674),

Gene: LilDirt\_2 Start: 300, Stop: 512, Start Num: 56

Candidate Starts for LilDirt\_2:

(Start: 56 @300 has 6 MA's), (73, 384), (95, 417), (104, 441), (106, 450), (107, 453), (112, 459),

Gene: Lillie\_40 Start: 30032, Stop: 29811, Start Num: 57

Candidate Starts for Lillie\_40:

(Start: 51 @30044 has 8 MA's), (Start: 57 @30032 has 122 MA's), (92, 29912),

Gene: LindNT\_4 Start: 703, Stop: 930, Start Num: 57

Candidate Starts for LindNT\_4:

(Start: 57 @703 has 122 MA's), (73, 799), (95, 832), (108, 868),

Gene: Llorens\_4 Start: 727, Stop: 963, Start Num: 57

Candidate Starts for Llorens\_4:

(Start: 57 @727 has 122 MA's), (86, 850), (103, 889), (112, 907),

Gene: Lunahalos\_4 Start: 727, Stop: 963, Start Num: 57

Candidate Starts for Lunahalos\_4:

(Start: 57 @727 has 122 MA's), (86, 850), (103, 889), (112, 907),

Gene: Luthien\_1 Start: 211, Stop: 468, Start Num: 52

Candidate Starts for Luthien\_1:

(Start: 47 @196 has 2 MA's), (Start: 52 @211 has 39 MA's), (80, 340), (103, 394),

Gene: MacKat\_4 Start: 703, Stop: 939, Start Num: 57

Candidate Starts for MacKat\_4:

(Start: 57 @703 has 122 MA's), (86, 826), (103, 865), (112, 883),

Gene: MacnCheese\_2 Start: 194, Stop: 415, Start Num: 57

Candidate Starts for MacnCheese\_2:

(Start: 57 @194 has 122 MA's), (73, 284), (90, 302), (95, 314), (110, 356),

Gene: Madvan\_1 Start: 211, Stop: 468, Start Num: 52

Candidate Starts for Madvan\_1:

(30, 130), (Start: 38 @151 has 2 MA's), (Start: 47 @196 has 2 MA's), (Start: 52 @211 has 39 MA's), (80, 340), (103, 394),

Gene: Magel\_1 Start: 221, Stop: 445, Start Num: 57

Candidate Starts for Magel\_1:

(Start: 57 @221 has 122 MA's),

Gene: MajinBuu\_1 Start: 211, Stop: 468, Start Num: 52

Candidate Starts for MajinBuu\_1:

(Start: 47 @196 has 2 MA's), (Start: 52 @211 has 39 MA's), (80, 340), (103, 394),

Gene: MarkPhew\_3 Start: 565, Stop: 789, Start Num: 63

Candidate Starts for MarkPhew\_3:

(43, 475), (Start: 63 @565 has 3 MA's), (66, 589), (70, 610), (77, 649), (80, 661), (90, 685), (95, 697),

Gene: McMater\_4 Start: 742, Stop: 954, Start Num: 58

Candidate Starts for McMater\_4:

(Start: 58 @742 has 51 MA's), (102, 877), (105, 883),

Gene: MeaningOfLife\_4 Start: 703, Stop: 930, Start Num: 57

Candidate Starts for MeaningOfLife\_4:

(Start: 57 @703 has 122 MA's), (73, 799), (108, 868),

Gene: Megsy\_4 Start: 703, Stop: 930, Start Num: 57

Candidate Starts for Megsy\_4:

(Start: 57 @703 has 122 MA's), (73, 799), (95, 832), (108, 868),

Gene: Miryou\_3 Start: 517, Stop: 747, Start Num: 58

Candidate Starts for Miryou\_3:

(Start: 58 @517 has 51 MA's), (59, 538), (Start: 60 @541 has 4 MA's), (86, 628), (90, 637), (95, 649), (106, 682), (118, 742),

Gene: MkaliMitinis3\_109 Start: 63259, Stop: 63471, Start Num: 60

Candidate Starts for MkaliMitinis3\_109:

(Start: 52 @63226 has 39 MA's), (Start: 60 @63259 has 4 MA's), (68, 63301), (69, 63304), (76, 63337), (88, 63364), (90, 63367), (92, 63373), (95, 63379), (96, 63382), (112, 63415),

Gene: Moonflower\_20 Start: 18958, Stop: 19197, Start Num: 62

Candidate Starts for Moonflower\_20:

(59, 18937), (Start: 60 @18940 has 4 MA's), (Start: 62 @18958 has 1 MA's), (81, 19063), (94, 19093), (101, 19108),

Gene: MrMagoo\_102 Start: 56348, Stop: 56605, Start Num: 56

Candidate Starts for MrMagoo\_102:

(39, 56282), (Start: 56 @56348 has 6 MA's), (90, 56501), (95, 56513), (103, 56531), (112, 56549),

Gene: Murucutumbu\_4 Start: 703, Stop: 930, Start Num: 57

Candidate Starts for Murucutumbu\_4:

(18, 442), (Start: 57 @703 has 122 MA's), (73, 799), (108, 868),

Gene: Mutzi\_77 Start: 53222, Stop: 53563, Start Num: 54

Candidate Starts for Mutzi\_77:

(13, 52913), (16, 52931), (24, 53024), (Start: 54 @53222 has 24 MA's), (72, 53315), (95, 53378), (96, 53381), (121, 53543),

Gene: Mynx\_4 Start: 703, Stop: 939, Start Num: 57

Candidate Starts for Mynx\_4:

(Start: 57 @703 has 122 MA's), (86, 826), (103, 865), (112, 883),

Gene: Mysticmoon\_1 Start: 220, Stop: 441, Start Num: 57

Candidate Starts for Mysticmoon\_1:

(28, 118), (44, 178), (Start: 57 @220 has 122 MA's),

Gene: Nadmeg\_1 Start: 212, Stop: 469, Start Num: 52

Candidate Starts for Nadmeg\_1:

(30, 131), (Start: 38 @152 has 2 MA's), (Start: 47 @197 has 2 MA's), (Start: 52 @212 has 39 MA's), (103, 395),

Gene: Nanosmite\_96 Start: 55870, Stop: 56115, Start Num: 57

Candidate Starts for Nanosmite\_96:

(32, 55789), (Start: 57 @55870 has 122 MA's), (90, 56011), (103, 56041), (112, 56059),

Gene: Neighly\_3 Start: 300, Stop: 512, Start Num: 56

Candidate Starts for Neighly\_3:

(Start: 56 @300 has 6 MA's), (73, 384), (95, 417), (104, 441), (106, 450), (107, 453), (112, 459),

Gene: Nibb\_3 Start: 602, Stop: 826, Start Num: 63

Candidate Starts for Nibb\_3:

(43, 491), (Start: 63 @602 has 3 MA's), (70, 647), (77, 686), (80, 698), (90, 722), (95, 734), (99, 743),

Gene: Niklas\_4 Start: 742, Stop: 954, Start Num: 58

Candidate Starts for Niklas\_4:

(Start: 58 @742 has 51 MA's), (102, 877), (105, 883),

Gene: Nirvana\_21 Start: 10337, Stop: 10642, Start Num: 52

Candidate Starts for Nirvana\_21:

(43, 10301), (Start: 52 @10337 has 39 MA's), (Start: 60 @10370 has 4 MA's), (66, 10409), (78, 10478), (83, 10493), (116, 10601), (119, 10613),

Gene: Nithya\_1 Start: 196, Stop: 468, Start Num: 47

Candidate Starts for Nithya\_1:

(Start: 47 @196 has 2 MA's), (Start: 52 @211 has 39 MA's), (80, 340), (103, 394),

Gene: NoPickles\_1 Start: 221, Stop: 445, Start Num: 57

Candidate Starts for NoPickles\_1:

(Start: 57 @221 has 122 MA's),

Gene: November\_2 Start: 206, Stop: 427, Start Num: 57

Candidate Starts for November\_2:

(Start: 57 @206 has 122 MA's), (73, 296), (95, 326),

Gene: Odesza\_1 Start: 221, Stop: 445, Start Num: 57

Candidate Starts for Odesza\_1:

(Start: 57 @221 has 122 MA's),

Gene: OhMyWard\_1 Start: 219, Stop: 473, Start Num: 57

Candidate Starts for OhMyWard\_1:

(44, 177), (Start: 57 @219 has 122 MA's), (80, 339), (103, 393), (111, 408),

Gene: OkiRoe\_3 Start: 517, Stop: 747, Start Num: 58

Candidate Starts for OkiRoe\_3:

(Start: 58 @517 has 51 MA's), (59, 538), (Start: 60 @541 has 4 MA's), (86, 628), (90, 637), (95, 649), (106, 682), (118, 742),

Gene: OlgasClover\_1 Start: 211, Stop: 468, Start Num: 52

Candidate Starts for OlgasClover\_1:

(Start: 47 @196 has 2 MA's), (Start: 52 @211 has 39 MA's), (80, 340), (103, 394),

Gene: Omnicron\_3 Start: 483, Stop: 713, Start Num: 58

Candidate Starts for Omnicron\_3:

(43, 432), (Start: 58 @483 has 51 MA's), (86, 594), (90, 603), (91, 606), (95, 615), (106, 648), (112, 657), (114, 672),

Gene: Oscar\_3 Start: 624, Stop: 842, Start Num: 58

Candidate Starts for Oscar\_3:

(9, 234), (15, 324), (Start: 58 @624 has 51 MA's), (73, 720), (90, 738), (95, 750), (103, 768), (109, 786), (114, 801),

Gene: PYPDinur\_112 Start: 63957, Stop: 64223, Start Num: 52

Candidate Starts for PYPDinur\_112:

(Start: 52 @63957 has 39 MA's), (Start: 60 @63990 has 4 MA's), (71, 64050), (75, 64074), (86, 64110), (90, 64119), (92, 64125), (103, 64149), (112, 64167),

Gene: Padfoot\_4 Start: 727, Stop: 963, Start Num: 57

Candidate Starts for Padfoot\_4:

(Start: 57 @727 has 122 MA's), (86, 850), (103, 889), (112, 907),

Gene: Padpat\_4 Start: 727, Stop: 960, Start Num: 57

Candidate Starts for Padpat\_4:

(Start: 57 @727 has 122 MA's), (72, 814), (95, 868), (103, 886), (112, 904),

Gene: Paola\_3 Start: 517, Stop: 747, Start Num: 58

Candidate Starts for Paola\_3:

(Start: 58 @517 has 51 MA's), (59, 538), (Start: 60 @541 has 4 MA's), (86, 628), (90, 637), (95, 649), (106, 682), (118, 742),

Gene: Peanam\_4 Start: 742, Stop: 954, Start Num: 58

Candidate Starts for Peanam\_4:

(Start: 58 @742 has 51 MA's), (102, 877), (105, 883),

Gene: Peel\_4 Start: 727, Stop: 963, Start Num: 57

Candidate Starts for Peel\_4:

(Start: 57 @727 has 122 MA's), (86, 850), (103, 889), (112, 907),

Gene: Perkunas\_1 Start: 221, Stop: 451, Start Num: 57

Candidate Starts for Perkunas\_1:

(34, 140), (Start: 57 @221 has 122 MA's),

Gene: PestoPenguin\_1 Start: 211, Stop: 468, Start Num: 52

Candidate Starts for PestoPenguin\_1:

(Start: 47 @196 has 2 MA's), (Start: 52 @211 has 39 MA's), (96, 379), (103, 394),

Gene: Petito\_1 Start: 221, Stop: 445, Start Num: 57

Candidate Starts for Petito\_1:

(34, 140), (Start: 57 @221 has 122 MA's),

Gene: PhailMary\_39 Start: 30366, Stop: 30133, Start Num: 51

Candidate Starts for PhailMary\_39:

(Start: 51 @30366 has 8 MA's), (Start: 57 @30354 has 122 MA's), (92, 30234),

Gene: Pharb\_2 Start: 188, Stop: 406, Start Num: 57

Candidate Starts for Pharb\_2:

(33, 107), (Start: 57 @188 has 122 MA's), (61, 224), (73, 278), (90, 296), (95, 308),

Gene: PhelpsODU\_3 Start: 659, Stop: 880, Start Num: 57

Candidate Starts for PhelpsODU\_3:

(Start: 57 @659 has 122 MA's), (90, 776), (92, 782), (95, 788), (103, 806),

Gene: Phepper\_1 Start: 211, Stop: 468, Start Num: 52

Candidate Starts for Phepper\_1:

(Start: 52 @211 has 39 MA's), (103, 394),

Gene: Pherobrine\_1 Start: 220, Stop: 441, Start Num: 57

Candidate Starts for Pherobrine\_1:

(Start: 57 @220 has 122 MA's), (118, 433),

Gene: Phlop\_77 Start: 52567, Stop: 52905, Start Num: 54

Candidate Starts for Phlop\_77:

(13, 52258), (16, 52276), (24, 52369), (Start: 54 @52567 has 24 MA's), (72, 52660), (95, 52723), (96, 52726), (121, 52885),

Gene: Phrank\_3 Start: 664, Stop: 888, Start Num: 57

Candidate Starts for Phrank\_3:

(Start: 57 @664 has 122 MA's), (73, 760), (90, 778), (95, 790), (108, 826),

Gene: Phrankenstein\_40 Start: 29990, Stop: 29757, Start Num: 51

Candidate Starts for Phrankenstein\_40:

(Start: 51 @29990 has 8 MA's), (Start: 57 @29978 has 122 MA's), (92, 29858),

Gene: Piatt\_4 Start: 727, Stop: 963, Start Num: 57

Candidate Starts for Piatt\_4:

(Start: 57 @727 has 122 MA's), (86, 850), (103, 889), (112, 907),

Gene: Pixie\_2 Start: 191, Stop: 415, Start Num: 58

Candidate Starts for Pixie\_2:

(Start: 58 @191 has 51 MA's), (73, 287), (95, 320), (108, 356),

Gene: Pokerus\_4 Start: 703, Stop: 930, Start Num: 57

Candidate Starts for Pokerus\_4:

(Start: 57 @703 has 122 MA's), (73, 799), (95, 832), (108, 868),

Gene: Portcullis\_80 Start: 52573, Stop: 52911, Start Num: 54

Candidate Starts for Portcullis\_80:

(13, 52324), (16, 52342), (17, 52363), (19, 52384), (22, 52417), (24, 52432), (Start: 54 @52573 has 24 MA's), (72, 52666), (95, 52729), (96, 52732), (121, 52891),

Gene: Prithvi\_4 Start: 703, Stop: 930, Start Num: 57

Candidate Starts for Prithvi\_4:

(Start: 57 @703 has 122 MA's), (73, 799), (95, 832), (108, 868),

Gene: Psycho\_3 Start: 542, Stop: 772, Start Num: 58

Candidate Starts for Psycho\_3:

(43, 491), (Start: 58 @542 has 51 MA's), (59, 563), (Start: 60 @566 has 4 MA's), (73, 626), (86, 653), (90, 662), (100, 686), (112, 716), (118, 767),

Gene: PullumCavea\_78 Start: 52744, Stop: 53082, Start Num: 54  
Candidate Starts for PullumCavea\_78:  
(13, 52435), (16, 52453), (24, 52546), (Start: 54 @52744 has 24 MA's), (72, 52837), (95, 52900), (96, 52903), (121, 53062),

Gene: Quantum\_15 Start: 8275, Stop: 8580, Start Num: 52  
Candidate Starts for Quantum\_15:  
(2, 7633), (3, 7645), (5, 7672), (43, 8239), (Start: 52 @8275 has 39 MA's), (Start: 60 @8308 has 4 MA's), (66, 8347), (78, 8416), (83, 8431), (116, 8539), (119, 8551),

Gene: Quby\_111 Start: 63147, Stop: 63413, Start Num: 52  
Candidate Starts for Quby\_111:  
(Start: 52 @63147 has 39 MA's), (Start: 60 @63180 has 4 MA's), (71, 63240), (75, 63264), (86, 63300), (90, 63309), (92, 63315), (103, 63339), (112, 63357),

Gene: QuincyRose\_4 Start: 703, Stop: 939, Start Num: 57  
Candidate Starts for QuincyRose\_4:  
(Start: 57 @703 has 122 MA's), (86, 826), (103, 865), (112, 883),

Gene: RER2\_33 Start: 26904, Stop: 26683, Start Num: 57  
Candidate Starts for RER2\_33:  
(Start: 51 @26916 has 8 MA's), (Start: 57 @26904 has 122 MA's), (92, 26784),

Gene: Ramen\_4 Start: 727, Stop: 954, Start Num: 57  
Candidate Starts for Ramen\_4:  
(Start: 57 @727 has 122 MA's), (73, 823), (108, 892),

Gene: Rando14\_3 Start: 618, Stop: 842, Start Num: 57  
Candidate Starts for Rando14\_3:  
(Start: 57 @618 has 122 MA's), (73, 714), (95, 744), (103, 762),

Gene: Rapunzel97\_4 Start: 727, Stop: 954, Start Num: 57  
Candidate Starts for Rapunzel97\_4:  
(Start: 57 @727 has 122 MA's), (73, 823), (108, 892),

Gene: Rasputin\_40 Start: 30014, Stop: 29781, Start Num: 51  
Candidate Starts for Rasputin\_40:  
(Start: 51 @30014 has 8 MA's), (Start: 57 @30002 has 122 MA's), (92, 29882),

Gene: Reindeer\_91 Start: 55528, Stop: 55773, Start Num: 57  
Candidate Starts for Reindeer\_91:  
(37, 55456), (Start: 57 @55528 has 122 MA's), (90, 55669), (111, 55714),

Gene: Rey\_102 Start: 56267, Stop: 56512, Start Num: 56  
Candidate Starts for Rey\_102:  
(Start: 56 @56267 has 6 MA's), (90, 56408), (103, 56438),

Gene: Rhodalysa\_40 Start: 30032, Stop: 29811, Start Num: 57  
Candidate Starts for Rhodalysa\_40:  
(Start: 51 @30044 has 8 MA's), (Start: 57 @30032 has 122 MA's), (92, 29912),

Gene: Richie\_97 Start: 52968, Stop: 53210, Start Num: 54

Candidate Starts for Richie\_97:  
(Start: 54 @52968 has 24 MA's), (74, 53073), (103, 53136),

Gene: Richo\_4 Start: 742, Stop: 954, Start Num: 58  
Candidate Starts for Richo\_4:  
(Start: 58 @742 has 51 MA's), (102, 877), (105, 883),

Gene: Rickmore\_1 Start: 211, Stop: 435, Start Num: 52  
Candidate Starts for Rickmore\_1:  
(Start: 47 @196 has 2 MA's), (Start: 52 @211 has 39 MA's), (86, 331), (103, 364),

Gene: RogerDodger\_83 Start: 53332, Stop: 53670, Start Num: 54  
Candidate Starts for RogerDodger\_83:  
(13, 53023), (16, 53041), (24, 53134), (Start: 54 @53332 has 24 MA's), (72, 53425), (95, 53488), (96, 53491), (121, 53650),

Gene: Roney\_1 Start: 221, Stop: 445, Start Num: 57  
Candidate Starts for Roney\_1:  
(Start: 57 @221 has 122 MA's),

Gene: RoseMarie\_97 Start: 58078, Stop: 58308, Start Num: 57  
Candidate Starts for RoseMarie\_97:  
(Start: 57 @58078 has 122 MA's), (95, 58216), (103, 58234),

Gene: Rosmarinus\_4 Start: 727, Stop: 963, Start Num: 57  
Candidate Starts for Rosmarinus\_4:  
(Start: 57 @727 has 122 MA's), (86, 850), (103, 889), (112, 907),

Gene: Runhaar\_1 Start: 211, Stop: 468, Start Num: 52  
Candidate Starts for Runhaar\_1:  
(30, 130), (Start: 38 @151 has 2 MA's), (Start: 47 @196 has 2 MA's), (Start: 52 @211 has 39 MA's), (80, 340), (103, 394),

Gene: Salvador\_79 Start: 52687, Stop: 53025, Start Num: 54  
Candidate Starts for Salvador\_79:  
(4, 52057), (13, 52378), (16, 52396), (24, 52489), (Start: 54 @52687 has 24 MA's), (72, 52780), (95, 52843), (96, 52846), (121, 53005),

Gene: SamuelLPlaqson\_4 Start: 691, Stop: 903, Start Num: 58  
Candidate Starts for SamuelLPlaqson\_4:  
(Start: 58 @691 has 51 MA's), (Start: 60 @715 has 4 MA's), (106, 838),

Gene: Sarkar\_17 Start: 8275, Stop: 8580, Start Num: 52  
Candidate Starts for Sarkar\_17:  
(2, 7633), (3, 7645), (5, 7672), (43, 8239), (Start: 52 @8275 has 39 MA's), (Start: 60 @8308 has 4 MA's), (66, 8347), (78, 8416), (83, 8431), (116, 8539), (119, 8551),

Gene: Satis\_16 Start: 8271, Stop: 8576, Start Num: 52  
Candidate Starts for Satis\_16:  
(2, 7629), (3, 7641), (5, 7668), (43, 8235), (Start: 52 @8271 has 39 MA's), (Start: 60 @8304 has 4 MA's), (66, 8343), (78, 8412), (83, 8427), (116, 8535), (119, 8547),

Gene: Scarlett\_3 Start: 624, Stop: 842, Start Num: 58

Candidate Starts for Scarlett\_3:

(15, 324), (Start: 58 @624 has 51 MA's), (73, 720), (90, 738), (95, 750), (103, 768), (109, 786), (114, 801),

Gene: Schwartz33\_1 Start: 220, Stop: 471, Start Num: 57

Candidate Starts for Schwartz33\_1:

(40, 157), (Start: 51 @208 has 8 MA's), (53, 211), (Start: 57 @220 has 122 MA's), (103, 394), (111, 409),

Gene: Secretariat\_1 Start: 244, Stop: 525, Start Num: 51

Candidate Starts for Secretariat\_1:

(Start: 51 @244 has 8 MA's), (Start: 57 @256 has 122 MA's), (73, 352), (87, 394), (111, 445),

Gene: ShaggyRogers\_1 Start: 211, Stop: 468, Start Num: 52

Candidate Starts for ShaggyRogers\_1:

(Start: 47 @196 has 2 MA's), (Start: 52 @211 has 39 MA's), (96, 379), (103, 394),

Gene: Shaobing\_4 Start: 742, Stop: 954, Start Num: 58

Candidate Starts for Shaobing\_4:

(Start: 58 @742 has 51 MA's), (102, 877), (105, 883),

Gene: ShedlockHolmes\_2 Start: 191, Stop: 418, Start Num: 58

Candidate Starts for ShedlockHolmes\_2:

(Start: 58 @191 has 51 MA's), (73, 287), (90, 308), (95, 320),

Gene: Sheng711\_114 Start: 63567, Stop: 63833, Start Num: 52

Candidate Starts for Sheng711\_114:

(Start: 52 @63567 has 39 MA's), (Start: 60 @63600 has 4 MA's), (75, 63684), (82, 63711), (86, 63720), (92, 63735), (103, 63759), (112, 63777),

Gene: ShiaSurprise\_4 Start: 727, Stop: 963, Start Num: 57

Candidate Starts for ShiaSurprise\_4:

(Start: 57 @727 has 122 MA's), (86, 850), (103, 889), (112, 907),

Gene: Shinji\_79 Start: 52690, Stop: 53028, Start Num: 54

Candidate Starts for Shinji\_79:

(21, 52456), (22, 52483), (23, 52486), (Start: 54 @52690 has 24 MA's), (72, 52783), (95, 52846), (96, 52849), (121, 53008),

Gene: Sicarius2\_69 Start: 42234, Stop: 42470, Start Num: 52

Candidate Starts for Sicarius2\_69:

(35, 42162), (Start: 52 @42234 has 39 MA's), (103, 42396), (112, 42414),

Gene: SlimJimmy\_90 Start: 55164, Stop: 55394, Start Num: 57

Candidate Starts for SlimJimmy\_90:

(Start: 57 @55164 has 122 MA's), (73, 55260), (103, 55320),

Gene: Slimphazie\_4 Start: 727, Stop: 954, Start Num: 57

Candidate Starts for Slimphazie\_4:

(Start: 57 @727 has 122 MA's), (73, 823), (108, 892),

Gene: SmokingBunny\_80 Start: 53683, Stop: 54021, Start Num: 54

Candidate Starts for SmokingBunny\_80:

(4, 53053), (13, 53374), (16, 53392), (24, 53485), (Start: 54 @53683 has 24 MA's), (72, 53776), (95, 53839), (96, 53842), (121, 54001),

Gene: SoSeph\_3 Start: 538, Stop: 768, Start Num: 58

Candidate Starts for SoSeph\_3:

(43, 487), (Start: 58 @538 has 51 MA's), (59, 559), (Start: 60 @562 has 4 MA's), (86, 649), (90, 658), (95, 670), (106, 703), (118, 763),

Gene: Spock\_4 Start: 727, Stop: 963, Start Num: 57

Candidate Starts for Spock\_4:

(Start: 57 @727 has 122 MA's), (86, 850), (103, 889), (112, 907),

Gene: Stinson\_4 Start: 703, Stop: 936, Start Num: 57

Candidate Starts for Stinson\_4:

(Start: 57 @703 has 122 MA's), (95, 844), (103, 862),

Gene: Sulley\_4 Start: 727, Stop: 945, Start Num: 58

Candidate Starts for Sulley\_4:

(Start: 58 @727 has 51 MA's), (73, 823), (95, 853), (108, 889),

Gene: Swann\_40 Start: 30042, Stop: 29809, Start Num: 51

Candidate Starts for Swann\_40:

(Start: 51 @30042 has 8 MA's), (Start: 57 @30030 has 122 MA's), (92, 29910),

Gene: SweetCrkHerbs\_1 Start: 221, Stop: 445, Start Num: 57

Candidate Starts for SweetCrkHerbs\_1:

(34, 140), (Start: 57 @221 has 122 MA's),

Gene: TBond007\_2 Start: 191, Stop: 415, Start Num: 58

Candidate Starts for TBond007\_2:

(Start: 58 @191 has 51 MA's), (73, 287), (95, 320), (108, 356),

Gene: TWAMP\_40 Start: 30032, Stop: 29811, Start Num: 57

Candidate Starts for TWAMP\_40:

(Start: 51 @30044 has 8 MA's), (Start: 57 @30032 has 122 MA's), (92, 29912),

Gene: Tachez\_4 Start: 703, Stop: 939, Start Num: 57

Candidate Starts for Tachez\_4:

(Start: 57 @703 has 122 MA's), (86, 826), (103, 865), (112, 883),

Gene: Tairn4Wing\_1 Start: 221, Stop: 445, Start Num: 57

Candidate Starts for Tairn4Wing\_1:

(Start: 57 @221 has 122 MA's),

Gene: TaiwanKao\_4 Start: 703, Stop: 930, Start Num: 57

Candidate Starts for TaiwanKao\_4:

(Start: 57 @703 has 122 MA's), (73, 799), (95, 832), (108, 868),

Gene: Talon44\_1 Start: 221, Stop: 445, Start Num: 57

Candidate Starts for Talon44\_1:

(34, 140), (Start: 57 @221 has 122 MA's),

Gene: Tanis\_1 Start: 221, Stop: 445, Start Num: 57

Candidate Starts for Tanis\_1:  
(Start: 57 @221 has 122 MA's),

Gene: TenaciousP\_1 Start: 211, Stop: 468, Start Num: 52  
Candidate Starts for TenaciousP\_1:  
(Start: 47 @196 has 2 MA's), (Start: 52 @211 has 39 MA's), (80, 340), (103, 394),

Gene: Thyatira\_3 Start: 517, Stop: 747, Start Num: 58  
Candidate Starts for Thyatira\_3:  
(Start: 58 @517 has 51 MA's), (59, 538), (Start: 60 @541 has 4 MA's), (86, 628), (90, 637), (95, 649),  
(106, 682), (118, 742),

Gene: Tierra\_3 Start: 665, Stop: 889, Start Num: 57  
Candidate Starts for Tierra\_3:  
(Start: 57 @665 has 122 MA's), (73, 761), (90, 779), (95, 791), (108, 827),

Gene: TillyBobJoe\_77 Start: 52709, Stop: 53059, Start Num: 54  
Candidate Starts for TillyBobJoe\_77:  
(13, 52400), (16, 52418), (24, 52511), (Start: 54 @52709 has 24 MA's), (95, 52865), (96, 52868), (121,  
53039),

Gene: TingHuaYa\_4 Start: 698, Stop: 925, Start Num: 57  
Candidate Starts for TingHuaYa\_4:  
(Start: 57 @698 has 122 MA's), (Start: 60 @722 has 4 MA's), (73, 794),

Gene: TiniBug\_4 Start: 691, Stop: 903, Start Num: 58  
Candidate Starts for TiniBug\_4:  
(Start: 58 @691 has 51 MA's), (Start: 60 @715 has 4 MA's), (106, 838),

Gene: Tiri\_4 Start: 703, Stop: 930, Start Num: 57  
Candidate Starts for Tiri\_4:  
(Start: 57 @703 has 122 MA's), (86, 814), (103, 853),

Gene: Togo\_79 Start: 53683, Stop: 54021, Start Num: 54  
Candidate Starts for Togo\_79:  
(4, 53053), (13, 53374), (16, 53392), (24, 53485), (Start: 54 @53683 has 24 MA's), (72, 53776), (95,  
53839), (96, 53842), (121, 54001),

Gene: Tonaltzin\_1 Start: 211, Stop: 468, Start Num: 52  
Candidate Starts for Tonaltzin\_1:  
(Start: 47 @196 has 2 MA's), (Start: 52 @211 has 39 MA's), (80, 340), (103, 394),

Gene: Topper\_4 Start: 727, Stop: 963, Start Num: 57  
Candidate Starts for Topper\_4:  
(Start: 57 @727 has 122 MA's), (86, 850), (103, 889), (112, 907),

Gene: TreyKay\_4 Start: 703, Stop: 930, Start Num: 57  
Candidate Starts for TreyKay\_4:  
(Start: 57 @703 has 122 MA's), (73, 799), (95, 832), (108, 868),

Gene: TribbleTrouble\_2 Start: 194, Stop: 412, Start Num: 58  
Candidate Starts for TribbleTrouble\_2:  
(Start: 58 @194 has 51 MA's), (73, 290), (90, 308), (95, 320), (108, 356),

Gene: Trufflozitus\_1 Start: 221, Stop: 445, Start Num: 57

Candidate Starts for Trufflozitus\_1:

(Start: 57 @221 has 122 MA's),

Gene: TruffulaTree\_4 Start: 727, Stop: 954, Start Num: 57

Candidate Starts for TruffulaTree\_4:

(Start: 57 @727 has 122 MA's), (73, 823), (108, 892),

Gene: Twister6\_80 Start: 52032, Stop: 52370, Start Num: 54

Candidate Starts for Twister6\_80:

(4, 51402), (13, 51723), (16, 51741), (24, 51834), (Start: 54 @52032 has 24 MA's), (72, 52125), (95, 52188), (96, 52191), (121, 52350),

Gene: Twitch\_4 Start: 727, Stop: 963, Start Num: 57

Candidate Starts for Twitch\_4:

(Start: 57 @727 has 122 MA's), (86, 850), (103, 889), (112, 907),

Gene: Unicorn\_3 Start: 659, Stop: 880, Start Num: 57

Candidate Starts for Unicorn\_3:

(Start: 57 @659 has 122 MA's), (90, 776), (92, 782), (95, 788), (103, 806),

Gene: Untouchable\_1 Start: 152, Stop: 469, Start Num: 38

Candidate Starts for Untouchable\_1:

(Start: 38 @152 has 2 MA's), (Start: 47 @197 has 2 MA's), (Start: 52 @212 has 39 MA's), (103, 395), (111, 410),

Gene: Urkel\_4 Start: 691, Stop: 903, Start Num: 58

Candidate Starts for Urkel\_4:

(Start: 58 @691 has 51 MA's), (Start: 60 @715 has 4 MA's), (106, 838),

Gene: Validus\_3 Start: 477, Stop: 689, Start Num: 58

Candidate Starts for Validus\_3:

(25, 333), (Start: 58 @477 has 51 MA's), (93, 588),

Gene: VanDeWege\_82 Start: 53340, Stop: 53690, Start Num: 54

Candidate Starts for VanDeWege\_82:

(21, 53106), (22, 53133), (23, 53136), (Start: 54 @53340 has 24 MA's), (95, 53496), (96, 53499), (121, 53670),

Gene: VanLee\_69 Start: 43001, Stop: 43234, Start Num: 54

Candidate Starts for VanLee\_69:

(7, 42515), (10, 42659), (Start: 54 @43001 has 24 MA's), (95, 43142), (112, 43178),

Gene: Vardy\_1 Start: 211, Stop: 468, Start Num: 52

Candidate Starts for Vardy\_1:

(Start: 38 @151 has 2 MA's), (Start: 47 @196 has 2 MA's), (Start: 52 @211 has 39 MA's), (80, 340), (103, 394),

Gene: Veliki\_4 Start: 727, Stop: 963, Start Num: 57

Candidate Starts for Veliki\_4:

(Start: 57 @727 has 122 MA's), (86, 850), (103, 889), (112, 907),

Gene: ViviJ\_2 Start: 300, Stop: 512, Start Num: 56  
Candidate Starts for ViviJ\_2:  
(Start: 56 @300 has 6 MA's), (73, 384), (95, 417), (104, 441), (106, 450), (107, 453), (112, 459),

Gene: Waterfoul\_3 Start: 538, Stop: 768, Start Num: 58  
Candidate Starts for Waterfoul\_3:  
(43, 487), (Start: 58 @538 has 51 MA's), (59, 559), (Start: 60 @562 has 4 MA's), (86, 649), (90, 658),  
(95, 670), (106, 703), (118, 763),

Gene: Wizard\_76 Start: 52517, Stop: 52855, Start Num: 54  
Candidate Starts for Wizard\_76:  
(13, 52208), (16, 52226), (24, 52319), (Start: 54 @52517 has 24 MA's), (72, 52610), (95, 52673), (96,  
52676), (121, 52835),

Gene: Wyborn\_68 Start: 42933, Stop: 43205, Start Num: 52  
Candidate Starts for Wyborn\_68:  
(35, 42861), (Start: 52 @42933 has 39 MA's), (65, 43008), (72, 43053), (73, 43062), (85, 43080), (98,  
43110), (112, 43146),

Gene: YoureAdopted\_4 Start: 703, Stop: 930, Start Num: 57  
Candidate Starts for YoureAdopted\_4:  
(Start: 57 @703 has 122 MA's), (73, 799), (108, 868),

Gene: Yuna\_4 Start: 807, Stop: 1034, Start Num: 55  
Candidate Starts for Yuna\_4:  
(Start: 55 @807 has 1 MA's), (73, 906), (90, 930), (95, 942),

Gene: YungMoney\_78 Start: 54062, Stop: 54403, Start Num: 54  
Candidate Starts for YungMoney\_78:  
(13, 53753), (16, 53771), (24, 53864), (Start: 54 @54062 has 24 MA's), (72, 54155), (95, 54218), (96,  
54221), (121, 54383),

Gene: Yunkel11\_4 Start: 699, Stop: 923, Start Num: 58  
Candidate Starts for Yunkel11\_4:  
(Start: 58 @699 has 51 MA's), (Start: 60 @723 has 4 MA's), (74, 786), (106, 858), (107, 861),

Gene: Zabiza\_4 Start: 727, Stop: 954, Start Num: 57  
Candidate Starts for Zabiza\_4:  
(Start: 57 @727 has 122 MA's), (73, 823), (108, 892),

Gene: Zavala\_4 Start: 703, Stop: 939, Start Num: 57  
Candidate Starts for Zavala\_4:  
(Start: 57 @703 has 122 MA's), (86, 826), (103, 865), (112, 883),

Gene: Zeph\_1 Start: 211, Stop: 468, Start Num: 52  
Candidate Starts for Zeph\_1:  
(Start: 38 @151 has 2 MA's), (Start: 47 @196 has 2 MA's), (Start: 52 @211 has 39 MA's), (80, 340),  
(103, 394),