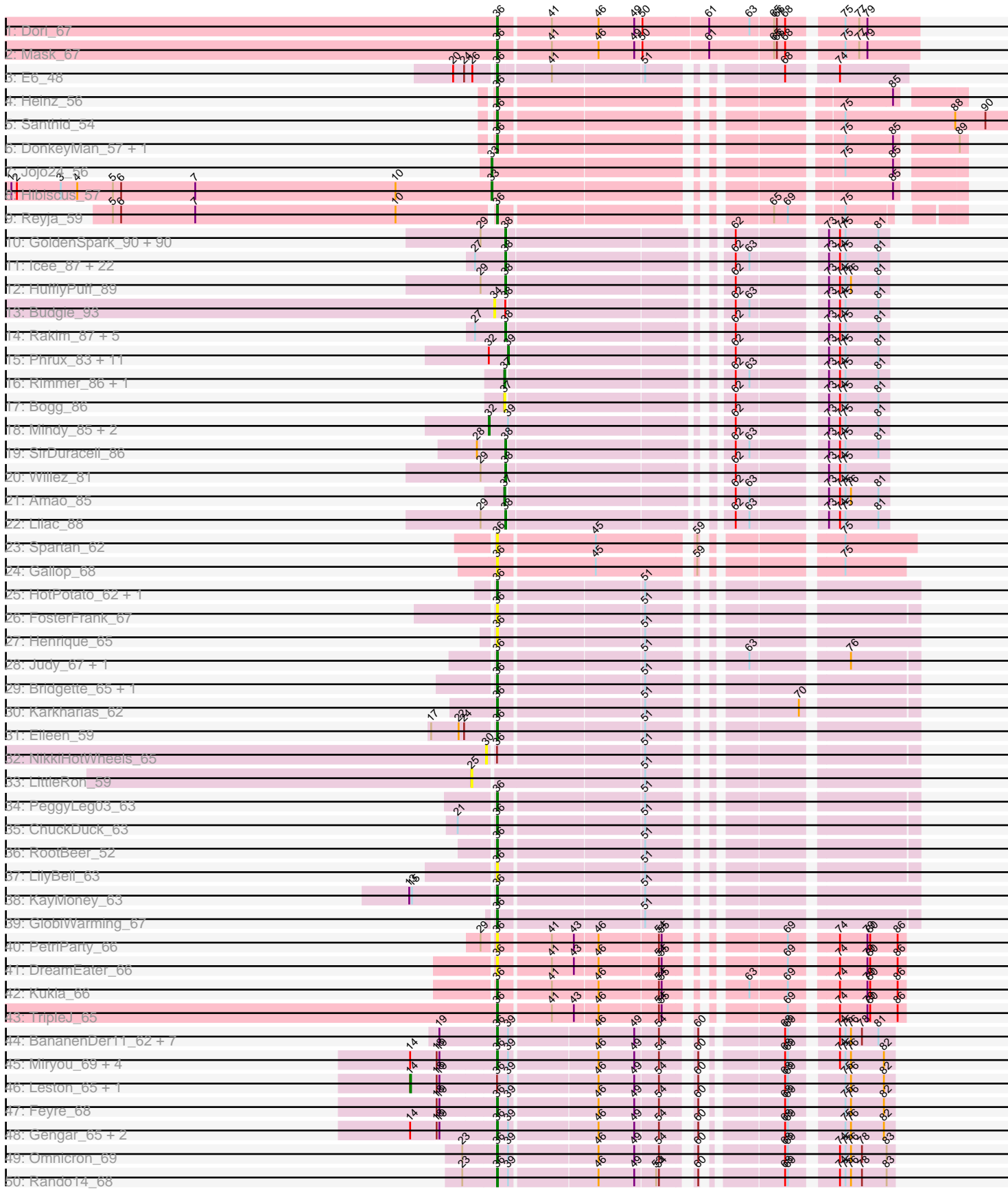
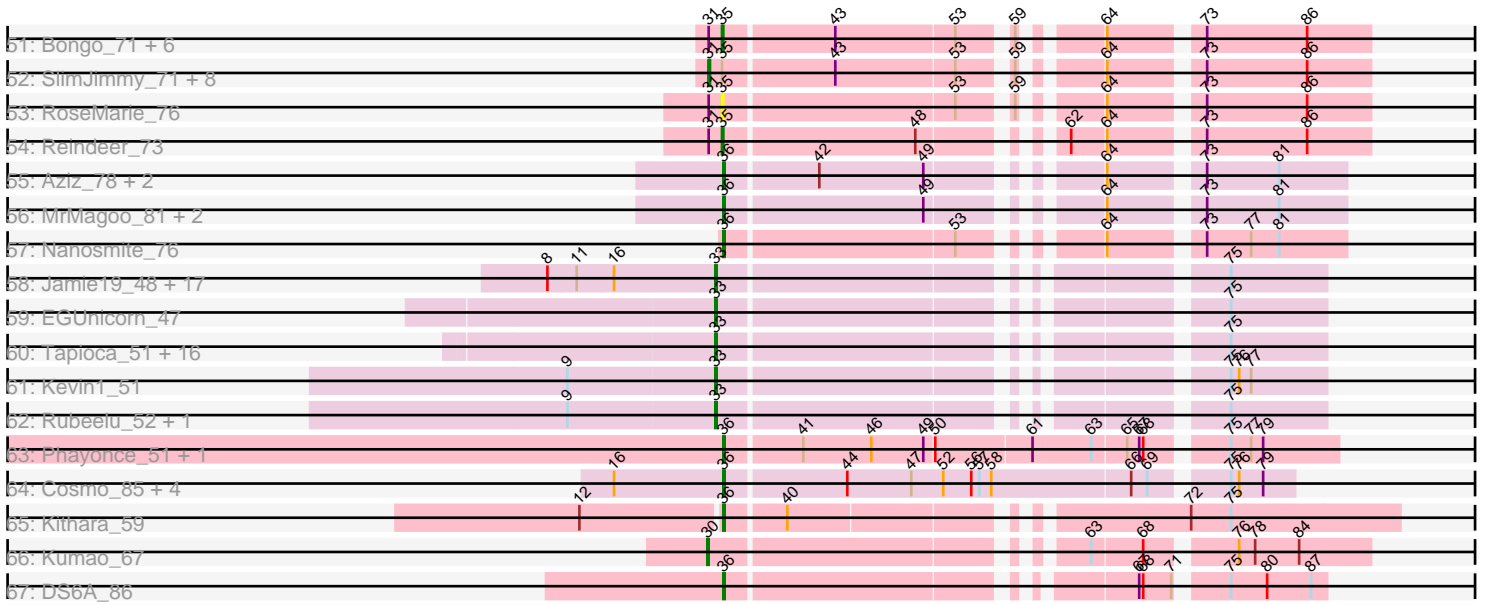


Pham 292460



Pham 292460



Note: Tracks are now grouped by subcluster and scaled. Switching in subcluster is indicated by changes in track color. Track scale is now set by default to display the region 30 bp upstream of start 1 to 30 bp downstream of the last possible start. If this default region is judged to be packed too tightly with annotated starts, the track will be further scaled to only show that region of the ORF with annotated starts. This action will be indicated by adding "Zoomed" to the title. For starts, yellow indicates the location of called starts comprised solely of Glimmer/GeneMark auto-annotations, green indicates the location of called starts with at least 1 manual gene annotation.

## Pham 292460 Report

This analysis was run 04/18/26 on database version 643.

Pham number 292460 has 273 members, 36 are drafts.

Phages represented in each track:

- Track 1 : Dori\_67
- Track 2 : Mask\_67
- Track 3 : E6\_48
- Track 4 : Heinz\_56
- Track 5 : Santhid\_54
- Track 6 : DonkeyMan\_57, Tarzan\_57
- Track 7 : Jojo24\_56
- Track 8 : Hibiscus\_57
- Track 9 : Reyja\_59
- Track 10 : GoldenSpark\_90, MPhalcon\_87, Bench\_89, MISSy\_87, Petra64142\_90, Filch\_87, Porky\_85, Ptowny\_83, Elite2014\_85, Tarkin\_85, FireRed\_90, Palpatine\_88, Highbury\_85, Murica\_89, FairyPath\_86, Maxxinista\_88, Czyszczonek\_87, Hopey\_86, Lilpickle\_85, Misfit\_87, Emmina\_86, Mosby\_82, ABCat\_83, NelitzaMV\_84, Pumpkin\_89, Dusk\_83, Contagion\_82, Pharsalus\_83, Terminus\_89, Becksu\_85, Command613\_88, BugsBunny\_86, ChosenOne\_86, AmericanBeauty\_90, Thresher\_88, Simpliphy\_85, Marshmallow\_84, Phaja\_84, Youngblood\_89, Stark\_87, Tomaszewski\_81, RiverMonster\_86, Cjw1\_86, TeardropMSU\_82, Ukulele\_81, Sassay\_81, Nimrod\_87, Kostya\_86, Policronamos\_89, Qualification\_87, TBrady12\_89, SophKB\_83, Paperbeatsrock\_85, Kanye\_83, Argent26\_90, JeTaime\_86, Buck\_87, Lilizi\_87, Brewer\_81, Dumbo\_86, NoSleep\_87, Nala\_88, Stank\_89, Holt\_91, NonchalantPear\_84, GooberAzure\_89, PaddyBaddy\_86, DrDrey\_86, Xandras\_85, BadStone\_83, MadamMonkfish\_86, OrionPax\_85, Murphy\_86, Phaux\_88, xkcd\_89, ShereKhan\_84, Elph10\_86, Gemini\_91, Goku\_85, PhatBacter\_90, StormChicken\_88, Thimble\_87, Greep\_90, Bruin\_83, Miniwave\_81, Eureka\_85, HanKaySha\_86, Saints25\_85, MollyToe\_81, Tuco\_87, IHOP\_84
- Track 11 : Icee\_87, Adnama\_90, Traaww1\_82, Glexan\_85, Balomoji\_86, Gator\_84, Harella\_86, Sotrice96\_87, Cookies\_83, Bask21\_86, Cactus\_89, Hoonter\_89, Wiggin\_88, FoghornLeghorn\_80, Asriel\_85, Barbarian\_85, Moldemort\_89, ChotaBhai\_86, Flypotenuse\_82, DoctorDiddles\_85, Daikon\_88, BigBubba\_86, Pat3\_84
- Track 12 : HufflyPuff\_89
- Track 13 : Budgie\_93
- Track 14 : Rakim\_87, Myrale\_86, Gage\_88, StolenFromERC\_89, Kimchi\_90, Goldilocks\_89
- Track 15 : Phrux\_83, CrystalP\_85, 244\_87, YassJohnny\_83, StellaBean\_84, BaboJay\_84, Manda\_88, Teaspoon\_87, Henry\_84, Inca\_83, BilboSwaggins\_84, ShamWow\_86

- Track 16 : Rimmer\_86, TeamEdward\_87
- Track 17 : Bogg\_86
- Track 18 : Mindy\_85, Easy2Say\_87, Toto\_84
- Track 19 : SirDuracell\_86
- Track 20 : Willez\_81
- Track 21 : Amao\_85
- Track 22 : Lilac\_88
- Track 23 : Spartan\_62
- Track 24 : Gallop\_68
- Track 25 : HotPotato\_62, Peas\_64
- Track 26 : FosterFrank\_67
- Track 27 : Henrique\_65
- Track 28 : Judy\_67, NidoQ\_60
- Track 29 : Bridgette\_65, Pucara\_59
- Track 30 : Karkharias\_62
- Track 31 : Eileen\_59
- Track 32 : NikkiHotWheels\_65
- Track 33 : LittleRon\_59
- Track 34 : PeggyLeg03\_63
- Track 35 : ChuckDuck\_63
- Track 36 : RootBeer\_52
- Track 37 : LilyBell\_63
- Track 38 : KayMoney\_63
- Track 39 : GlobiWarming\_67
- Track 40 : PetriParty\_66
- Track 41 : DreamEater\_66
- Track 42 : Kukla\_66
- Track 43 : TripleJ\_65
- Track 44 : BananenDer11\_62, InvictusManeo\_63, Kratio\_63, Agent47\_65, DoubleChamp\_62, Collard\_63, ViviJ\_64, LilDirt\_62
- Track 45 : Miryou\_69, SoSeph\_66, Waterfoul\_67, Heftyboy\_66, Thyatira\_68
- Track 46 : Leston\_65, Guillsminger\_66
- Track 47 : Feyre\_68
- Track 48 : Gengar\_65, Paola\_65, OkiRoe\_66
- Track 49 : Omnicron\_69
- Track 50 : Rando14\_68
- Track 51 : Bongo\_71, IPHane7\_71, KleverKiS\_70, PegLeg\_70, Bricole\_70, LilhomieP\_71, Auspice\_71
- Track 52 : SlimJimmy\_71, Dulcita\_72, FreakyGoo\_73, TpudiCK\_73, Izel\_72, TyDawg\_71, Skinny\_74, Glaske16\_73, Diminimus\_72
- Track 53 : RoseMarie\_76
- Track 54 : Reindeer\_73
- Track 55 : Aziz\_78, GenevaB15\_79, Estes\_80
- Track 56 : MrMagoo\_81, GardenSalsa\_80, Rey\_78
- Track 57 : Nanosmite\_76
- Track 58 : Jamie19\_48, ShrimpFriedEgg\_54, Spinach\_54, Nenae\_54, Bosection6\_48, Purgamenstris\_54, Raymond7\_48, Impisi\_55, Charlie\_50, Panchino\_47, BabeRuth\_55, Hanako\_54, Andies\_47, PhancyPhin\_54, SpongeBob\_48, Redi\_54, Phrann\_51, Snekmaggedon\_48
- Track 59 : EGUnicorn\_47
- Track 60 : Tapioca\_51, Melville\_52, Fulbright\_48, Duplicity\_49, Parmesanjohn\_49, Tessdabest\_50, Phloss\_47, Magsby\_49, Schnauzer\_50, Tortoise12\_48, Gex\_49, Xerxes\_49, Silvafighter\_50, Chewbacca\_51, Pipsqueaks\_49, Smurph\_49,

Carcharodon\_49

- Track 61 : Kevin1\_51
- Track 62 : Rubeelu\_52, Butters\_52
- Track 63 : Phayonce\_51, Mao1\_69
- Track 64 : Cosmo\_85, EniyanLRS\_81, Wildcat\_85, Azrael100\_84, MaryV\_85
- Track 65 : Kithara\_59
- Track 66 : Kumao\_67
- Track 67 : DS6A\_86

**Summary of Final Annotations (See graph section above for start numbers):**

The start number called the most often in the published annotations is 38, it was called in 111 of the 237 non-draft genes in the pham.

Genes that call this "Most Annotated" start:

- ABCat\_83, Adnama\_90, AmericanBeauty\_90, Argent26\_90, Asriel\_85, BadStone\_83, Balomoji\_86, Barbarian\_85, Bask21\_86, Becksu\_85, Bench\_89, BigBubba\_86, Brewer\_81, Bruin\_83, Buck\_87, BugsBunny\_86, Cactus\_89, ChosenOne\_86, ChotaBhai\_86, Cjw1\_86, Command613\_88, Contagion\_82, Cookies\_83, Czystczon1\_87, Daikon\_88, DoctorDiddles\_85, DrDrey\_86, Dumbo\_86, Dusk\_83, Elite2014\_85, Elph10\_86, Emmina\_86, Eureka\_85, FairyPath\_86, Filch\_87, FireRed\_90, Flypotenuse\_82, FoghornLeghorn\_80, Gage\_88, Gator\_84, Gemini\_91, Glexan\_85, Goku\_85, GoldenSpark\_90, Goldilocks\_89, GooberAzure\_89, Greep\_90, HanKaySha\_86, Harella\_86, Highbury\_85, Holt\_91, Hoonter\_89, Hopey\_86, HufflyPuff\_89, IHOP\_84, Icee\_87, JeTaime\_86, Kanye\_83, Kimchi\_90, Kostya\_86, Lilac\_88, Lilizi\_87, Lilpickle\_85, MISSy\_87, MPhalcon\_87, MadamMonkfish\_86, Marshmallow\_84, Maxxinista\_88, Miniwave\_81, Misfit\_87, Moldemort\_89, MollyToe\_81, Mosby\_82, Murica\_89, Murphy\_86, Myrale\_86, Nala\_88, NelitzaMV\_84, Nimrod\_87, NoSleep\_87, NonchalantPear\_84, OrionPax\_85, PaddyBaddy\_86, Palpatine\_88, Paperbeatsrock\_85, Pat3\_84, Petra64142\_90, Phaja\_84, Pharsalus\_83, PhatBacter\_90, Phaux\_88, Policronamos\_89, Porky\_85, Ptowny\_83, Pumpkin\_89, Quallification\_87, Rakim\_87, RiverMonster\_86, Saints25\_85, Sassay\_81, ShereKhan\_84, Simpliphy\_85, SirDuracell\_86, SophKB\_83, Sotrice96\_87, Stank\_89, Stark\_87, StolenFromERC\_89, StormChicken\_88, TBrady12\_89, Tarkin\_85, TeardropMSU\_82, Terminus\_89, Thimble\_87, Thresher\_88, Tomaszewski\_81, Traaww1\_82, Tuco\_87, Ukulele\_81, WiggIn\_88, Willez\_81, Xandras\_85, Youngblood\_89, xkcd\_89,

Genes that have the "Most Annotated" start but do not call it:

- Budgie\_93,

Genes that do not have the "Most Annotated" start:

- 244\_87, Agent47\_65, Amao\_85, Andies\_47, Auspice\_71, Aziz\_78, Azrael100\_84, BabeRuth\_55, BaboJay\_84, BananenDer11\_62, BilboSwaggins\_84, Bogg\_86, Bongo\_71, Bosection6\_48, Bricole\_70, Bridgette\_65, Butters\_52, Carcharodon\_49, Charlie\_50, Chewbacca\_51, ChuckDuck\_63, Collard\_63, Cosmo\_85, CrystalP\_85, DS6A\_86, Diminimus\_72, DonkeyMan\_57, Dori\_67, DoubleChamp\_62, DreamEater\_66, Dulcita\_72, Duplicity\_49, E6\_48, EGUnicorn\_47, Easy2Say\_87, Eileen\_59, EniyanLRS\_81, Estes\_80, Feyre\_68, FosterFrank\_67, FreakyGoo\_73, Fulbright\_48, Gallop\_68, GardenSalsa\_80, GenevaB15\_79, Gengar\_65, Gex\_49,

Glaskel6\_73, GlobiWarming\_67, Guillsminger\_66, Hanako\_54, Heftyboy\_66, Heinz\_56, Henrique\_65, Henry\_84, Hibiscus\_57, HotPotato\_62, IPhone7\_71, Impisi\_55, Inca\_83, InvictusManeo\_63, Izel\_72, Jamie19\_48, Jojo24\_56, Judy\_67, Karkharias\_62, KayMoney\_63, Kevin1\_51, Kithara\_59, KleverKiS\_70, Kratio\_63, Kukla\_66, Kumao\_67, Leston\_65, LilDirt\_62, LilhomieP\_71, LilyBell\_63, LittleRon\_59, Magsby\_49, Manda\_88, Mao1\_69, MaryV\_85, Mask\_67, Melville\_52, Mindy\_85, Miryou\_69, MrMagoo\_81, Nanosmite\_76, Nenae\_54, NidoQ\_60, NikkiHotWheels\_65, OkiRoe\_66, Omnicron\_69, Panchino\_47, Paola\_65, Parmesanjohn\_49, Peas\_64, PegLeg\_70, PeggyLeg03\_63, PetriParty\_66, PhancyPhin\_54, Phayonce\_51, Phloss\_47, Phrann\_51, Phrux\_83, Pipsqueaks\_49, Pucara\_59, Purgamenstris\_54, Rando14\_68, Raymond7\_48, Redi\_54, Reindeer\_73, Rey\_78, Reyja\_59, Rimmer\_86, RootBeer\_52, RoseMarie\_76, Rubeelu\_52, Santhid\_54, Schnauzer\_50, ShamWow\_86, ShrimpFriedEgg\_54, Silvafighter\_50, Skinny\_74, SlimJimmy\_71, Smurph\_49, Snekmaggon\_48, SoSeph\_66, Spartan\_62, Spinach\_54, SpongeBob\_48, StellaBean\_84, Tapioca\_51, Tarzan\_57, TeamEdward\_87, Teaspoon\_87, Tessdabest\_50, Thyatira\_68, Tortoise12\_48, Toto\_84, TpudiCK\_73, TripleJ\_65, TyDawg\_71, ViviJ\_64, Waterfoul\_67, Wildcat\_85, Xerxes\_49, YassJohnny\_83,

### Summary by start number:

#### Start 14:

- Found in 10 of 273 ( 3.7% ) of genes in pham
- Manual Annotations of this start: 2 of 237
- Called 20.0% of time when present
- Phage (with cluster) where this start called: Guillsminger\_66 (K5), Leston\_65 (K5),

#### Start 25:

- Found in 1 of 273 ( 0.4% ) of genes in pham
- No Manual Annotations of this start.
- Called 100.0% of time when present
- Phage (with cluster) where this start called: LittleRon\_59 (FA),

#### Start 30:

- Found in 2 of 273 ( 0.7% ) of genes in pham
- Manual Annotations of this start: 1 of 237
- Called 100.0% of time when present
- Phage (with cluster) where this start called: Kumao\_67 (singleton), NikkiHotWheels\_65 (FA),

#### Start 31:

- Found in 18 of 273 ( 6.6% ) of genes in pham
- Manual Annotations of this start: 8 of 237
- Called 50.0% of time when present
- Phage (with cluster) where this start called: Diminimus\_72 (M1), Dulcita\_72 (M1), FreakyGoo\_73 (M1), Glaskel6\_73 (M1), Izel\_72 (M1), Skinny\_74 (M1), SlimJimmy\_71 (M1), TpudiCK\_73 (M1), TyDawg\_71 (M1),

#### Start 32:

- Found in 15 of 273 ( 5.5% ) of genes in pham
- Manual Annotations of this start: 3 of 237
- Called 20.0% of time when present

- Phage (with cluster) where this start called: Easy2Say\_87 (E), Mindy\_85 (E), Toto\_84 (E),

#### Start 33:

- Found in 41 of 273 ( 15.0% ) of genes in pham
- Manual Annotations of this start: 39 of 237
- Called 100.0% of time when present
- Phage (with cluster) where this start called: Andies\_47 (N), BabeRuth\_55 (N), Bosection6\_48 (N), Butters\_52 (N), Carcharodon\_49 (N), Charlie\_50 (N), Chewbacca\_51 (N), Duplicity\_49 (N), EGUunicorn\_47 (N), Fulbright\_48 (N), Gex\_49 (N), Hanako\_54 (N), Hibiscus\_57 (DY), Impisi\_55 (N), Jamie19\_48 (N), Jojo24\_56 (DY), Kevin1\_51 (N), Magsby\_49 (N), Melville\_52 (N), Nenae\_54 (N), Panchino\_47 (N), Parmesanjohn\_49 (N), PhancyPhin\_54 (N), Phloss\_47 (N), Phrann\_51 (N), Pipsqueaks\_49 (N), Purgamenstris\_54 (N), Raymond7\_48 (N), Redi\_54 (N), Rubeelu\_52 (N), Schnauzer\_50 (N), ShrimpFriedEgg\_54 (N), Silvafighter\_50 (N), Smurph\_49 (N), Snekmaggedon\_48 (N), Spinach\_54 (N), SpongeBob\_48 (N), Tapioca\_51 (N), Tessdabest\_50 (N), Tortoise12\_48 (N), Xerxes\_49 (N),

#### Start 34:

- Found in 1 of 273 ( 0.4% ) of genes in pham
- No Manual Annotations of this start.
- Called 100.0% of time when present
- Phage (with cluster) where this start called: Budgie\_93 (E),

#### Start 35:

- Found in 18 of 273 ( 6.6% ) of genes in pham
- Manual Annotations of this start: 7 of 237
- Called 50.0% of time when present
- Phage (with cluster) where this start called: Auspice\_71 (M1), Bongo\_71 (M1), Bricole\_70 (M1), IPhone7\_71 (M1), KleverKiS\_70 (M1), LilhomieP\_71 (M1), PegLeg\_70 (M1), Reindeer\_73 (M1), RoseMarie\_76 (M1),

#### Start 36:

- Found in 68 of 273 ( 24.9% ) of genes in pham
- Manual Annotations of this start: 52 of 237
- Called 95.6% of time when present
- Phage (with cluster) where this start called: Agent47\_65 (K5), Aziz\_78 (M2), Azrael100\_84 (V), BananenDer11\_62 (K5), Bridgette\_65 (FA), ChuckDuck\_63 (FA), Collard\_63 (K5), Cosmo\_85 (V), DS6A\_86 (singleton), DonkeyMan\_57 (DY), Dori\_67 (AD), DoubleChamp\_62 (K5), DreamEater\_66 (FJ), E6\_48 (BW), Eileen\_59 (FA), EniyanLRS\_81 (V), Estes\_80 (M2), Feyre\_68 (K5), FosterFrank\_67 (FA), Gallop\_68 (ES), GardenSalsa\_80 (M2), GenevaB15\_79 (M2), Gengar\_65 (K5), GlobiWarming\_67 (FA), Heftyboy\_66 (K5), Heinz\_56 (DY), Henrique\_65 (FA), HotPotato\_62 (FA), InvictusManeo\_63 (K5), Judy\_67 (FA), Karkharias\_62 (FA), KayMoney\_63 (FA), Kithara\_59 (singleton), Kratio\_63 (K5), Kukla\_66 (FJ), LilDirt\_62 (K5), LilyBell\_63 (FA), Mao1\_69 (AD), MaryV\_85 (V), Mask\_67 (AD), Miryou\_69 (K5), MrMagoo\_81 (M2), Nanosmite\_76 (M3), NidoQ\_60 (FA), OkiRoe\_66 (K5), Omnicron\_69 (K5), Paola\_65 (K5), Peas\_64 (FA), PeggyLeg03\_63 (FA), PetriParty\_66 (FJ), Phayonce\_51 (P5), Pucara\_59 (FA), Rando14\_68 (K5), Rey\_78 (M2), Reyja\_59 (DY), RootBeer\_52 (FA), Santhid\_54 (DY), SoSeph\_66 (K5), Spartan\_62 (ES), Tarzan\_57 (DY), Thyatira\_68 (K5), TripleJ\_65 (FJ), ViviJ\_64 (K5), Waterfoul\_67 (K5), Wildcat\_85 (V),

#### Start 37:

- Found in 4 of 273 ( 1.5% ) of genes in pham
- Manual Annotations of this start: 2 of 237
- Called 100.0% of time when present
- Phage (with cluster) where this start called: Amao\_85 (E), Bogg\_86 (E), Rimmer\_86 (E), TeamEdward\_87 (E),

#### Start 38:

- Found in 125 of 273 ( 45.8% ) of genes in pham
- Manual Annotations of this start: 111 of 237
- Called 99.2% of time when present
- Phage (with cluster) where this start called: ABCat\_83 (E), Adnama\_90 (E), AmericanBeauty\_90 (E), Argent26\_90 (E), Asriel\_85 (E), BadStone\_83 (E), Balomoji\_86 (E), Barbarian\_85 (E), Bask21\_86 (E), Becksu\_85 (E), Bench\_89 (E), BigBubba\_86 (E), Brewer\_81 (E), Bruin\_83 (E), Buck\_87 (E), BugsBunny\_86 (E), Cactus\_89 (E), ChosenOne\_86 (E), ChotaBhai\_86 (E), Cjw1\_86 (E), Command613\_88 (E), Contagion\_82 (E), Cookies\_83 (E), Czyszczonek1\_87 (E), Daikon\_88 (E), DoctorDiddles\_85 (E), DrDrey\_86 (E), Dumbo\_86 (E), Dusk\_83 (E), Elite2014\_85 (E), Elph10\_86 (E), Emmina\_86 (E), Eureka\_85 (E), FairyPath\_86 (E), Filch\_87 (E), FireRed\_90 (E), Flypotenuse\_82 (E), FoghornLeghorn\_80 (E), Gage\_88 (E), Gator\_84 (E), Gemini\_91 (E), Glexan\_85 (E), Goku\_85 (E), GoldenSpark\_90 (E), Goldilocks\_89 (E), GooberAzure\_89 (E), Greep\_90 (E), HanKaySha\_86 (E), Harella\_86 (E), Highbury\_85 (E), Holt\_91 (E), Hoonter\_89 (E), Hopey\_86 (E), HufflyPuff\_89 (E), IHOP\_84 (E), Icee\_87 (E), JeTaime\_86 (E), Kanye\_83 (E), Kimchi\_90 (E), Kostya\_86 (E), Lilac\_88 (E), Lilizi\_87 (E), Lilpickle\_85 (E), MISSy\_87 (E), MPhalcon\_87 (E), MadamMonkfish\_86 (E), Marshmallow\_84 (E), Maxxinista\_88 (E), Miniwave\_81 (E), Misfit\_87 (E), Moldemort\_89 (E), MollyToe\_81 (E), Mosby\_82 (E), Murica\_89 (E), Murphy\_86 (E), Myrale\_86 (E), Nala\_88 (E), NelitzaMV\_84 (E), Nimrod\_87 (E), NoSleep\_87 (E), NonchalantPear\_84 (E), OrionPax\_85 (E), PaddyBaddy\_86 (E), Palpatine\_88 (E), Paperbeatsrock\_85 (E), Pat3\_84 (E), Petra64142\_90 (E), Phaja\_84 (E), Pharsalus\_83 (E), PhatBacter\_90 (E), Phaux\_88 (E), Policronamos\_89 (E), Porky\_85 (E), Ptowny\_83 (E), Pumpkin\_89 (E), Quallification\_87 (E), Rakim\_87 (E), RiverMonster\_86 (E), Saints25\_85 (E), Sassay\_81 (E), ShereKhan\_84 (E), Simpliphy\_85 (E), SirDuracell\_86 (E), SophKB\_83 (E), Sotrice96\_87 (E), Stank\_89 (E), Stark\_87 (E), StolenFromERC\_89 (E), StormChicken\_88 (E), TBrady12\_89 (E), Tarkin\_85 (E), TeardropMSU\_82 (E), Terminus\_89 (E), Thimble\_87 (E), Thresher\_88 (E), Tomaszewski\_81 (E), Traaww1\_82 (E), Tuco\_87 (E), Ukulele\_81 (E), Wiggin\_88 (E), Willez\_81 (E), Xandras\_85 (E), Youngblood\_89 (E), xkcd\_89 (E),

#### Start 39:

- Found in 36 of 273 ( 13.2% ) of genes in pham
- Manual Annotations of this start: 12 of 237
- Called 33.3% of time when present
- Phage (with cluster) where this start called: 244\_87 (E), BaboJay\_84 (E), BilboSwaggins\_84 (E), CrystalP\_85 (E), Henry\_84 (E), Inca\_83 (E), Manda\_88 (E), Phrux\_83 (E), ShamWow\_86 (E), StellaBean\_84 (E), Teaspoon\_87 (E), YassJohnny\_83 (E),

#### Summary by clusters:

There are 15 clusters represented in this pham: V, E, M3, P5, M2, singleton, N, FA, BW, M1, K5, DY, FJ, ES, AD,

Info for manual annotations of cluster AD:

- Start number 36 was manually annotated 3 times for cluster AD.

Info for manual annotations of cluster BW:

- Start number 36 was manually annotated 1 time for cluster BW.

Info for manual annotations of cluster DY:

- Start number 33 was manually annotated 2 times for cluster DY.
- Start number 36 was manually annotated 5 times for cluster DY.

Info for manual annotations of cluster E:

- Start number 32 was manually annotated 3 times for cluster E.
- Start number 37 was manually annotated 2 times for cluster E.
- Start number 38 was manually annotated 111 times for cluster E.
- Start number 39 was manually annotated 12 times for cluster E.

Info for manual annotations of cluster FA:

- Start number 36 was manually annotated 10 times for cluster FA.

Info for manual annotations of cluster FJ:

- Start number 36 was manually annotated 2 times for cluster FJ.

Info for manual annotations of cluster K5:

- Start number 14 was manually annotated 2 times for cluster K5.
- Start number 36 was manually annotated 16 times for cluster K5.

Info for manual annotations of cluster M1:

- Start number 31 was manually annotated 8 times for cluster M1.
- Start number 35 was manually annotated 7 times for cluster M1.

Info for manual annotations of cluster M2:

- Start number 36 was manually annotated 6 times for cluster M2.

Info for manual annotations of cluster M3:

- Start number 36 was manually annotated 1 time for cluster M3.

Info for manual annotations of cluster N:

- Start number 33 was manually annotated 37 times for cluster N.

Info for manual annotations of cluster P5:

- Start number 36 was manually annotated 1 time for cluster P5.

Info for manual annotations of cluster V:

- Start number 36 was manually annotated 5 times for cluster V.

**Gene Information:**

Gene: 244\_87 Start: 52340, Stop: 52702, Start Num: 39

Candidate Starts for 244\_87:

(Start: 32 @52319 has 3 MA's), (Start: 39 @52340 has 12 MA's), (62, 52553), (73, 52637), (74, 52649), (75, 52655), (81, 52691),

Gene: ABCat\_83 Start: 52732, Stop: 53094, Start Num: 38

Candidate Starts for ABCat\_83:

(29, 52705), (Start: 38 @52732 has 111 MA's), (62, 52945), (73, 53029), (74, 53041), (75, 53047), (81, 53083),

Gene: Adnama\_90 Start: 52618, Stop: 52980, Start Num: 38

Candidate Starts for Adnama\_90:

(27, 52585), (Start: 38 @52618 has 111 MA's), (62, 52831), (63, 52846), (73, 52915), (74, 52927), (75, 52933), (81, 52969),

Gene: Agent47\_65 Start: 45856, Stop: 46221, Start Num: 36

Candidate Starts for Agent47\_65:

(19, 45793), (Start: 36 @45856 has 52 MA's), (Start: 39 @45868 has 12 MA's), (46, 45958), (49, 45997), (54, 46021), (60, 46048), (68, 46117), (69, 46120), (74, 46162), (75, 46168), (76, 46174), (78, 46186), (81, 46204),

Gene: Amao\_85 Start: 51813, Stop: 52175, Start Num: 37

Candidate Starts for Amao\_85:

(Start: 37 @51813 has 2 MA's), (62, 52026), (63, 52041), (73, 52110), (74, 52122), (75, 52128), (76, 52134), (81, 52164),

Gene: AmericanBeauty\_90 Start: 52901, Stop: 53263, Start Num: 38

Candidate Starts for AmericanBeauty\_90:

(29, 52874), (Start: 38 @52901 has 111 MA's), (62, 53114), (73, 53198), (74, 53210), (75, 53216), (81, 53252),

Gene: Andies\_47 Start: 34063, Stop: 34455, Start Num: 33

Candidate Starts for Andies\_47:

(8, 33940), (11, 33961), (16, 33988), (Start: 33 @34063 has 39 MA's), (75, 34384),

Gene: Argent26\_90 Start: 52539, Stop: 52901, Start Num: 38

Candidate Starts for Argent26\_90:

(29, 52512), (Start: 38 @52539 has 111 MA's), (62, 52752), (73, 52836), (74, 52848), (75, 52854), (81, 52890),

Gene: Asriel\_85 Start: 50955, Stop: 51317, Start Num: 38

Candidate Starts for Asriel\_85:

(27, 50922), (Start: 38 @50955 has 111 MA's), (62, 51168), (63, 51183), (73, 51252), (74, 51264), (75, 51270), (81, 51306),

Gene: Auspice\_71 Start: 46676, Stop: 47095, Start Num: 35

Candidate Starts for Auspice\_71:

(Start: 31 @46667 has 8 MA's), (Start: 35 @46676 has 7 MA's), (43, 46754), (53, 46841), (59, 46871), (64, 46913), (73, 46973), (86, 47048),

Gene: Aziz\_78 Start: 48719, Stop: 49120, Start Num: 36

Candidate Starts for Aziz\_78:

(Start: 36 @48719 has 52 MA's), (42, 48785), (49, 48863), (64, 48956), (73, 49016), (81, 49070),

Gene: Azrael100\_84 Start: 52399, Stop: 52803, Start Num: 36

Candidate Starts for Azrael100\_84:

(16, 52318), (Start: 36 @52399 has 52 MA's), (44, 52486), (47, 52534), (52, 52558), (56, 52579), (57, 52585), (58, 52594), (66, 52696), (69, 52708), (75, 52756), (76, 52762), (79, 52780),

Gene: BabeRuth\_55 Start: 35784, Stop: 36176, Start Num: 33

Candidate Starts for BabeRuth\_55:

(8, 35661), (11, 35682), (16, 35709), (Start: 33 @35784 has 39 MA's), (75, 36105),

Gene: BaboJay\_84 Start: 52341, Stop: 52703, Start Num: 39

Candidate Starts for BaboJay\_84:

(Start: 32 @52320 has 3 MA's), (Start: 39 @52341 has 12 MA's), (62, 52554), (73, 52638), (74, 52650), (75, 52656), (81, 52692),

Gene: BadStone\_83 Start: 52301, Stop: 52663, Start Num: 38

Candidate Starts for BadStone\_83:

(29, 52274), (Start: 38 @52301 has 111 MA's), (62, 52514), (73, 52598), (74, 52610), (75, 52616), (81, 52652),

Gene: Balomoji\_86 Start: 52725, Stop: 53087, Start Num: 38

Candidate Starts for Balomoji\_86:

(27, 52692), (Start: 38 @52725 has 111 MA's), (62, 52938), (63, 52953), (73, 53022), (74, 53034), (75, 53040), (81, 53076),

Gene: BananenDer11\_62 Start: 45817, Stop: 46182, Start Num: 36

Candidate Starts for BananenDer11\_62:

(19, 45754), (Start: 36 @45817 has 52 MA's), (Start: 39 @45829 has 12 MA's), (46, 45919), (49, 45958), (54, 45982), (60, 46009), (68, 46078), (69, 46081), (74, 46123), (75, 46129), (76, 46135), (78, 46147), (81, 46165),

Gene: Barbarian\_85 Start: 50955, Stop: 51317, Start Num: 38

Candidate Starts for Barbarian\_85:

(27, 50922), (Start: 38 @50955 has 111 MA's), (62, 51168), (63, 51183), (73, 51252), (74, 51264), (75, 51270), (81, 51306),

Gene: Bask21\_86 Start: 51578, Stop: 51940, Start Num: 38

Candidate Starts for Bask21\_86:

(27, 51545), (Start: 38 @51578 has 111 MA's), (62, 51791), (63, 51806), (73, 51875), (74, 51887), (75, 51893), (81, 51929),

Gene: Becksu\_85 Start: 52931, Stop: 53293, Start Num: 38

Candidate Starts for Becksu\_85:

(29, 52904), (Start: 38 @52931 has 111 MA's), (62, 53144), (73, 53228), (74, 53240), (75, 53246), (81, 53282),

Gene: Bench\_89 Start: 52396, Stop: 52758, Start Num: 38

Candidate Starts for Bench\_89:

(29, 52369), (Start: 38 @52396 has 111 MA's), (62, 52609), (73, 52693), (74, 52705), (75, 52711), (81, 52747),

Gene: BigBubba\_86 Start: 51971, Stop: 52333, Start Num: 38

Candidate Starts for BigBubba\_86:

(27, 51938), (Start: 38 @51971 has 111 MA's), (62, 52184), (63, 52199), (73, 52268), (74, 52280), (75, 52286), (81, 52322),

Gene: BilboSwaggins\_84 Start: 52698, Stop: 53060, Start Num: 39  
Candidate Starts for BilboSwaggins\_84:  
(Start: 32 @52677 has 3 MA's), (Start: 39 @52698 has 12 MA's), (62, 52911), (73, 52995), (74, 53007),  
(75, 53013), (81, 53049),

Gene: Bogg\_86 Start: 51787, Stop: 52149, Start Num: 37  
Candidate Starts for Bogg\_86:  
(Start: 37 @51787 has 2 MA's), (62, 52000), (73, 52084), (74, 52096), (75, 52102), (81, 52138),

Gene: Bongo\_71 Start: 46680, Stop: 47099, Start Num: 35  
Candidate Starts for Bongo\_71:  
(Start: 31 @46671 has 8 MA's), (Start: 35 @46680 has 7 MA's), (43, 46758), (53, 46845), (59, 46875),  
(64, 46917), (73, 46977), (86, 47052),

Gene: Bosection6\_48 Start: 33529, Stop: 33921, Start Num: 33  
Candidate Starts for Bosection6\_48:  
(8, 33406), (11, 33427), (16, 33454), (Start: 33 @33529 has 39 MA's), (75, 33850),

Gene: Brewer\_81 Start: 51198, Stop: 51560, Start Num: 38  
Candidate Starts for Brewer\_81:  
(29, 51171), (Start: 38 @51198 has 111 MA's), (62, 51411), (73, 51495), (74, 51507), (75, 51513), (81,  
51549),

Gene: Bricole\_70 Start: 46403, Stop: 46822, Start Num: 35  
Candidate Starts for Bricole\_70:  
(Start: 31 @46394 has 8 MA's), (Start: 35 @46403 has 7 MA's), (43, 46481), (53, 46568), (59, 46598),  
(64, 46640), (73, 46700), (86, 46775),

Gene: Bridgette\_65 Start: 40727, Stop: 41116, Start Num: 36  
Candidate Starts for Bridgette\_65:  
(Start: 36 @40727 has 52 MA's), (51, 40877),

Gene: Bruin\_83 Start: 51275, Stop: 51637, Start Num: 38  
Candidate Starts for Bruin\_83:  
(29, 51248), (Start: 38 @51275 has 111 MA's), (62, 51488), (73, 51572), (74, 51584), (75, 51590), (81,  
51626),

Gene: Buck\_87 Start: 52980, Stop: 53342, Start Num: 38  
Candidate Starts for Buck\_87:  
(29, 52953), (Start: 38 @52980 has 111 MA's), (62, 53193), (73, 53277), (74, 53289), (75, 53295), (81,  
53331),

Gene: Budgie\_93 Start: 52407, Stop: 52781, Start Num: 34  
Candidate Starts for Budgie\_93:  
(34, 52407), (Start: 38 @52419 has 111 MA's), (62, 52632), (63, 52647), (73, 52716), (74, 52728), (75,  
52734), (81, 52770),

Gene: BugsBunny\_86 Start: 52804, Stop: 53166, Start Num: 38  
Candidate Starts for BugsBunny\_86:  
(29, 52777), (Start: 38 @52804 has 111 MA's), (62, 53017), (73, 53101), (74, 53113), (75, 53119), (81,  
53155),

Gene: Butters\_52 Start: 35124, Stop: 35516, Start Num: 33  
Candidate Starts for Butters\_52:  
(9, 35016), (Start: 33 @35124 has 39 MA's), (75, 35445),

Gene: Cactus\_89 Start: 51619, Stop: 51981, Start Num: 38  
Candidate Starts for Cactus\_89:  
(27, 51586), (Start: 38 @51619 has 111 MA's), (62, 51832), (63, 51847), (73, 51916), (74, 51928), (75, 51934), (81, 51970),

Gene: Carcharodon\_49 Start: 34516, Stop: 34908, Start Num: 33  
Candidate Starts for Carcharodon\_49:  
(Start: 33 @34516 has 39 MA's), (75, 34837),

Gene: Charlie\_50 Start: 33268, Stop: 33660, Start Num: 33  
Candidate Starts for Charlie\_50:  
(8, 33145), (11, 33166), (16, 33193), (Start: 33 @33268 has 39 MA's), (75, 33589),

Gene: Chewbacca\_51 Start: 34516, Stop: 34908, Start Num: 33  
Candidate Starts for Chewbacca\_51:  
(Start: 33 @34516 has 39 MA's), (75, 34837),

Gene: ChosenOne\_86 Start: 51756, Stop: 52118, Start Num: 38  
Candidate Starts for ChosenOne\_86:  
(29, 51729), (Start: 38 @51756 has 111 MA's), (62, 51969), (73, 52053), (74, 52065), (75, 52071), (81, 52107),

Gene: ChotaBhai\_86 Start: 51943, Stop: 52305, Start Num: 38  
Candidate Starts for ChotaBhai\_86:  
(27, 51910), (Start: 38 @51943 has 111 MA's), (62, 52156), (63, 52171), (73, 52240), (74, 52252), (75, 52258), (81, 52294),

Gene: ChuckDuck\_63 Start: 40338, Stop: 40727, Start Num: 36  
Candidate Starts for ChuckDuck\_63:  
(21, 40302), (Start: 36 @40338 has 52 MA's), (51, 40488),

Gene: Cjw1\_86 Start: 53450, Stop: 53812, Start Num: 38  
Candidate Starts for Cjw1\_86:  
(29, 53423), (Start: 38 @53450 has 111 MA's), (62, 53663), (73, 53747), (74, 53759), (75, 53765), (81, 53801),

Gene: Collard\_63 Start: 45817, Stop: 46182, Start Num: 36  
Candidate Starts for Collard\_63:  
(19, 45754), (Start: 36 @45817 has 52 MA's), (Start: 39 @45829 has 12 MA's), (46, 45919), (49, 45958), (54, 45982), (60, 46009), (68, 46078), (69, 46081), (74, 46123), (75, 46129), (76, 46135), (78, 46147), (81, 46165),

Gene: Command613\_88 Start: 52795, Stop: 53157, Start Num: 38  
Candidate Starts for Command613\_88:  
(29, 52768), (Start: 38 @52795 has 111 MA's), (62, 53008), (73, 53092), (74, 53104), (75, 53110), (81, 53146),

Gene: Contagion\_82 Start: 51556, Stop: 51918, Start Num: 38  
Candidate Starts for Contagion\_82:

(29, 51529), (Start: 38 @51556 has 111 MA's), (62, 51769), (73, 51853), (74, 51865), (75, 51871), (81, 51907),

Gene: Cookies\_83 Start: 51800, Stop: 52162, Start Num: 38

Candidate Starts for Cookies\_83:

(27, 51767), (Start: 38 @51800 has 111 MA's), (62, 52013), (63, 52028), (73, 52097), (74, 52109), (75, 52115), (81, 52151),

Gene: Cosmo\_85 Start: 52400, Stop: 52804, Start Num: 36

Candidate Starts for Cosmo\_85:

(16, 52319), (Start: 36 @52400 has 52 MA's), (44, 52487), (47, 52535), (52, 52559), (56, 52580), (57, 52586), (58, 52595), (66, 52697), (69, 52709), (75, 52757), (76, 52763), (79, 52781),

Gene: CrystalP\_85 Start: 52698, Stop: 53060, Start Num: 39

Candidate Starts for CrystalP\_85:

(Start: 32 @52677 has 3 MA's), (Start: 39 @52698 has 12 MA's), (62, 52911), (73, 52995), (74, 53007), (75, 53013), (81, 53049),

Gene: Czyszczone1\_87 Start: 52259, Stop: 52621, Start Num: 38

Candidate Starts for Czyszczone1\_87:

(29, 52232), (Start: 38 @52259 has 111 MA's), (62, 52472), (73, 52556), (74, 52568), (75, 52574), (81, 52610),

Gene: DS6A\_86 Start: 55827, Stop: 56213, Start Num: 36

Candidate Starts for DS6A\_86:

(Start: 36 @55827 has 52 MA's), (67, 56088), (68, 56091), (71, 56112), (75, 56142), (80, 56169), (87, 56202),

Gene: Daikon\_88 Start: 52746, Stop: 53108, Start Num: 38

Candidate Starts for Daikon\_88:

(27, 52713), (Start: 38 @52746 has 111 MA's), (62, 52959), (63, 52974), (73, 53043), (74, 53055), (75, 53061), (81, 53097),

Gene: Diminimus\_72 Start: 46666, Stop: 47094, Start Num: 31

Candidate Starts for Diminimus\_72:

(Start: 31 @46666 has 8 MA's), (Start: 35 @46675 has 7 MA's), (43, 46753), (53, 46840), (59, 46870), (64, 46912), (73, 46972), (86, 47047),

Gene: DoctorDiddles\_85 Start: 51987, Stop: 52349, Start Num: 38

Candidate Starts for DoctorDiddles\_85:

(27, 51954), (Start: 38 @51987 has 111 MA's), (62, 52200), (63, 52215), (73, 52284), (74, 52296), (75, 52302), (81, 52338),

Gene: DonkeyMan\_57 Start: 37973, Stop: 38404, Start Num: 36

Candidate Starts for DonkeyMan\_57:

(Start: 36 @37973 has 52 MA's), (75, 38288), (85, 38339), (89, 38396),

Gene: Dori\_67 Start: 52520, Stop: 52948, Start Num: 36

Candidate Starts for Dori\_67:

(Start: 36 @52520 has 52 MA's), (41, 52574), (46, 52625), (49, 52664), (50, 52670), (61, 52739), (63, 52781), (65, 52805), (66, 52808), (68, 52817), (75, 52868), (77, 52883), (79, 52892),

Gene: DoubleChamp\_62 Start: 45817, Stop: 46182, Start Num: 36

Candidate Starts for DoubleChamp\_62:

(19, 45754), (Start: 36 @45817 has 52 MA's), (Start: 39 @45829 has 12 MA's), (46, 45919), (49, 45958), (54, 45982), (60, 46009), (68, 46078), (69, 46081), (74, 46123), (75, 46129), (76, 46135), (78, 46147), (81, 46165),

Gene: DrDrey\_86 Start: 53178, Stop: 53540, Start Num: 38

Candidate Starts for DrDrey\_86:

(29, 53151), (Start: 38 @53178 has 111 MA's), (62, 53391), (73, 53475), (74, 53487), (75, 53493), (81, 53529),

Gene: DreamEater\_66 Start: 40056, Stop: 40433, Start Num: 36

Candidate Starts for DreamEater\_66:

(Start: 36 @40056 has 52 MA's), (41, 40110), (43, 40134), (46, 40158), (54, 40221), (55, 40224), (69, 40320), (74, 40362), (79, 40392), (80, 40395), (86, 40425),

Gene: Dulcita\_72 Start: 46667, Stop: 47095, Start Num: 31

Candidate Starts for Dulcita\_72:

(Start: 31 @46667 has 8 MA's), (Start: 35 @46676 has 7 MA's), (43, 46754), (53, 46841), (59, 46871), (64, 46913), (73, 46973), (86, 47048),

Gene: Dumbo\_86 Start: 51661, Stop: 52023, Start Num: 38

Candidate Starts for Dumbo\_86:

(29, 51634), (Start: 38 @51661 has 111 MA's), (62, 51874), (73, 51958), (74, 51970), (75, 51976), (81, 52012),

Gene: Duplicity\_49 Start: 34525, Stop: 34917, Start Num: 33

Candidate Starts for Duplicity\_49:

(Start: 33 @34525 has 39 MA's), (75, 34846),

Gene: Dusk\_83 Start: 51961, Stop: 52323, Start Num: 38

Candidate Starts for Dusk\_83:

(29, 51934), (Start: 38 @51961 has 111 MA's), (62, 52174), (73, 52258), (74, 52270), (75, 52276), (81, 52312),

Gene: E6\_48 Start: 32434, Stop: 32817, Start Num: 36

Candidate Starts for E6\_48:

(20, 32392), (24, 32404), (26, 32413), (Start: 36 @32434 has 52 MA's), (41, 32488), (51, 32584), (68, 32698), (74, 32743),

Gene: EGUunicorn\_47 Start: 33216, Stop: 33608, Start Num: 33

Candidate Starts for EGUunicorn\_47:

(Start: 33 @33216 has 39 MA's), (75, 33537),

Gene: Easy2Say\_87 Start: 53142, Stop: 53525, Start Num: 32

Candidate Starts for Easy2Say\_87:

(Start: 32 @53142 has 3 MA's), (Start: 39 @53163 has 12 MA's), (62, 53376), (73, 53460), (74, 53472), (75, 53478), (81, 53514),

Gene: Eileen\_59 Start: 38213, Stop: 38605, Start Num: 36

Candidate Starts for Eileen\_59:

(17, 38147), (22, 38177), (24, 38183), (Start: 36 @38213 has 52 MA's), (51, 38363),

Gene: Elite2014\_85 Start: 51755, Stop: 52117, Start Num: 38

Candidate Starts for Elite2014\_85:

(29, 51728), (Start: 38 @51755 has 111 MA's), (62, 51968), (73, 52052), (74, 52064), (75, 52070), (81, 52106),

Gene: Elph10\_86 Start: 51757, Stop: 52119, Start Num: 38

Candidate Starts for Elph10\_86:

(29, 51730), (Start: 38 @51757 has 111 MA's), (62, 51970), (73, 52054), (74, 52066), (75, 52072), (81, 52108),

Gene: Emmina\_86 Start: 51659, Stop: 52021, Start Num: 38

Candidate Starts for Emmina\_86:

(29, 51632), (Start: 38 @51659 has 111 MA's), (62, 51872), (73, 51956), (74, 51968), (75, 51974), (81, 52010),

Gene: EniyanLRS\_81 Start: 52139, Stop: 52543, Start Num: 36

Candidate Starts for EniyanLRS\_81:

(16, 52058), (Start: 36 @52139 has 52 MA's), (44, 52226), (47, 52274), (52, 52298), (56, 52319), (57, 52325), (58, 52334), (66, 52436), (69, 52448), (75, 52496), (76, 52502), (79, 52520),

Gene: Estes\_80 Start: 49066, Stop: 49467, Start Num: 36

Candidate Starts for Estes\_80:

(Start: 36 @49066 has 52 MA's), (42, 49132), (49, 49210), (64, 49303), (73, 49363), (81, 49417),

Gene: Eureka\_85 Start: 52671, Stop: 53033, Start Num: 38

Candidate Starts for Eureka\_85:

(29, 52644), (Start: 38 @52671 has 111 MA's), (62, 52884), (73, 52968), (74, 52980), (75, 52986), (81, 53022),

Gene: FairyPath\_86 Start: 52874, Stop: 53236, Start Num: 38

Candidate Starts for FairyPath\_86:

(29, 52847), (Start: 38 @52874 has 111 MA's), (62, 53087), (73, 53171), (74, 53183), (75, 53189), (81, 53225),

Gene: Feyre\_68 Start: 49578, Stop: 49943, Start Num: 36

Candidate Starts for Feyre\_68:

(18, 49515), (19, 49518), (Start: 36 @49578 has 52 MA's), (Start: 39 @49590 has 12 MA's), (46, 49680), (49, 49719), (54, 49743), (60, 49770), (68, 49839), (69, 49842), (75, 49890), (76, 49896), (82, 49932),

Gene: Filch\_87 Start: 51684, Stop: 52046, Start Num: 38

Candidate Starts for Filch\_87:

(29, 51657), (Start: 38 @51684 has 111 MA's), (62, 51897), (73, 51981), (74, 51993), (75, 51999), (81, 52035),

Gene: FireRed\_90 Start: 53249, Stop: 53611, Start Num: 38

Candidate Starts for FireRed\_90:

(29, 53222), (Start: 38 @53249 has 111 MA's), (62, 53462), (73, 53546), (74, 53558), (75, 53564), (81, 53600),

Gene: Flypotenuse\_82 Start: 51609, Stop: 51971, Start Num: 38

Candidate Starts for Flypotenuse\_82:

(27, 51576), (Start: 38 @51609 has 111 MA's), (62, 51822), (63, 51837), (73, 51906), (74, 51918), (75, 51924), (81, 51960),

Gene: FoghornLeghorn\_80 Start: 50622, Stop: 50984, Start Num: 38  
Candidate Starts for FoghornLeghorn\_80:  
(27, 50589), (Start: 38 @50622 has 111 MA's), (62, 50835), (63, 50850), (73, 50919), (74, 50931), (75, 50937), (81, 50973),

Gene: FosterFrank\_67 Start: 40055, Stop: 40444, Start Num: 36  
Candidate Starts for FosterFrank\_67:  
(Start: 36 @40055 has 52 MA's), (51, 40205),

Gene: FreakyGoo\_73 Start: 47146, Stop: 47574, Start Num: 31  
Candidate Starts for FreakyGoo\_73:  
(Start: 31 @47146 has 8 MA's), (Start: 35 @47155 has 7 MA's), (43, 47233), (53, 47320), (59, 47350), (64, 47392), (73, 47452), (86, 47527),

Gene: Fulbright\_48 Start: 33605, Stop: 33997, Start Num: 33  
Candidate Starts for Fulbright\_48:  
(Start: 33 @33605 has 39 MA's), (75, 33926),

Gene: Gage\_88 Start: 52402, Stop: 52764, Start Num: 38  
Candidate Starts for Gage\_88:  
(27, 52369), (Start: 38 @52402 has 111 MA's), (62, 52615), (73, 52699), (74, 52711), (75, 52717), (81, 52753),

Gene: Gallop\_68 Start: 44638, Stop: 45021, Start Num: 36  
Candidate Starts for Gallop\_68:  
(Start: 36 @44638 has 52 MA's), (45, 44740), (59, 44836), (75, 44956),

Gene: GardenSalsa\_80 Start: 49270, Stop: 49671, Start Num: 36  
Candidate Starts for GardenSalsa\_80:  
(Start: 36 @49270 has 52 MA's), (49, 49414), (64, 49507), (73, 49567), (81, 49621),

Gene: Gator\_84 Start: 52452, Stop: 52814, Start Num: 38  
Candidate Starts for Gator\_84:  
(27, 52419), (Start: 38 @52452 has 111 MA's), (62, 52665), (63, 52680), (73, 52749), (74, 52761), (75, 52767), (81, 52803),

Gene: Gemini\_91 Start: 53056, Stop: 53418, Start Num: 38  
Candidate Starts for Gemini\_91:  
(29, 53029), (Start: 38 @53056 has 111 MA's), (62, 53269), (73, 53353), (74, 53365), (75, 53371), (81, 53407),

Gene: GenevaB15\_79 Start: 48719, Stop: 49120, Start Num: 36  
Candidate Starts for GenevaB15\_79:  
(Start: 36 @48719 has 52 MA's), (42, 48785), (49, 48863), (64, 48956), (73, 49016), (81, 49070),

Gene: Gengar\_65 Start: 47565, Stop: 47930, Start Num: 36  
Candidate Starts for Gengar\_65:  
(Start: 14 @47475 has 2 MA's), (18, 47502), (19, 47505), (Start: 36 @47565 has 52 MA's), (Start: 39 @47577 has 12 MA's), (46, 47667), (49, 47706), (54, 47730), (60, 47757), (68, 47826), (69, 47829), (75, 47877), (76, 47883), (82, 47919),

Gene: Gex\_49 Start: 34532, Stop: 34924, Start Num: 33

Candidate Starts for Gex\_49:  
(Start: 33 @34532 has 39 MA's), (75, 34853),

Gene: Glaske16\_73 Start: 47145, Stop: 47573, Start Num: 31  
Candidate Starts for Glaske16\_73:  
(Start: 31 @47145 has 8 MA's), (Start: 35 @47154 has 7 MA's), (43, 47232), (53, 47319), (59, 47349),  
(64, 47391), (73, 47451), (86, 47526),

Gene: Glexan\_85 Start: 52739, Stop: 53101, Start Num: 38  
Candidate Starts for Glexan\_85:  
(27, 52706), (Start: 38 @52739 has 111 MA's), (62, 52952), (63, 52967), (73, 53036), (74, 53048), (75,  
53054), (81, 53090),

Gene: GlobiWarming\_67 Start: 40113, Stop: 40502, Start Num: 36  
Candidate Starts for GlobiWarming\_67:  
(Start: 36 @40113 has 52 MA's), (51, 40263),

Gene: Goku\_85 Start: 52400, Stop: 52762, Start Num: 38  
Candidate Starts for Goku\_85:  
(29, 52373), (Start: 38 @52400 has 111 MA's), (62, 52613), (73, 52697), (74, 52709), (75, 52715), (81,  
52751),

Gene: GoldenSpark\_90 Start: 52539, Stop: 52901, Start Num: 38  
Candidate Starts for GoldenSpark\_90:  
(29, 52512), (Start: 38 @52539 has 111 MA's), (62, 52752), (73, 52836), (74, 52848), (75, 52854), (81,  
52890),

Gene: Goldilocks\_89 Start: 51897, Stop: 52259, Start Num: 38  
Candidate Starts for Goldilocks\_89:  
(27, 51864), (Start: 38 @51897 has 111 MA's), (62, 52110), (73, 52194), (74, 52206), (75, 52212), (81,  
52248),

Gene: GooberAzure\_89 Start: 52539, Stop: 52901, Start Num: 38  
Candidate Starts for GooberAzure\_89:  
(29, 52512), (Start: 38 @52539 has 111 MA's), (62, 52752), (73, 52836), (74, 52848), (75, 52854), (81,  
52890),

Gene: Greep\_90 Start: 53535, Stop: 53897, Start Num: 38  
Candidate Starts for Greep\_90:  
(29, 53508), (Start: 38 @53535 has 111 MA's), (62, 53748), (73, 53832), (74, 53844), (75, 53850), (81,  
53886),

Gene: Guillsminger\_66 Start: 47417, Stop: 47872, Start Num: 14  
Candidate Starts for Guillsminger\_66:  
(Start: 14 @47417 has 2 MA's), (18, 47444), (19, 47447), (Start: 36 @47507 has 52 MA's), (Start: 39  
@47519 has 12 MA's), (46, 47609), (49, 47648), (54, 47672), (60, 47699), (68, 47768), (69, 47771),  
(75, 47819), (76, 47825), (82, 47861),

Gene: HanKaySha\_86 Start: 51837, Stop: 52199, Start Num: 38  
Candidate Starts for HanKaySha\_86:  
(29, 51810), (Start: 38 @51837 has 111 MA's), (62, 52050), (73, 52134), (74, 52146), (75, 52152), (81,  
52188),

Gene: Hanako\_54 Start: 35784, Stop: 36176, Start Num: 33  
Candidate Starts for Hanako\_54:  
(8, 35661), (11, 35682), (16, 35709), (Start: 33 @35784 has 39 MA's), (75, 36105),

Gene: Harella\_86 Start: 53255, Stop: 53617, Start Num: 38  
Candidate Starts for Harella\_86:  
(27, 53222), (Start: 38 @53255 has 111 MA's), (62, 53468), (63, 53483), (73, 53552), (74, 53564), (75, 53570), (81, 53606),

Gene: Heftyboy\_66 Start: 47886, Stop: 48251, Start Num: 36  
Candidate Starts for Heftyboy\_66:  
(Start: 14 @47796 has 2 MA's), (18, 47823), (19, 47826), (Start: 36 @47886 has 52 MA's), (Start: 39 @47898 has 12 MA's), (46, 47988), (49, 48027), (54, 48051), (60, 48078), (68, 48147), (69, 48150), (74, 48192), (75, 48198), (76, 48204), (82, 48240),

Gene: Heinz\_56 Start: 36903, Stop: 37334, Start Num: 36  
Candidate Starts for Heinz\_56:  
(Start: 36 @36903 has 52 MA's), (85, 37269),

Gene: Henrique\_65 Start: 39825, Stop: 40217, Start Num: 36  
Candidate Starts for Henrique\_65:  
(Start: 36 @39825 has 52 MA's), (51, 39975),

Gene: Henry\_84 Start: 52138, Stop: 52500, Start Num: 39  
Candidate Starts for Henry\_84:  
(Start: 32 @52117 has 3 MA's), (Start: 39 @52138 has 12 MA's), (62, 52351), (73, 52435), (74, 52447), (75, 52453), (81, 52489),

Gene: Hibiscus\_57 Start: 36872, Stop: 37315, Start Num: 33  
Candidate Starts for Hibiscus\_57:  
(1, 36347), (2, 36353), (3, 36401), (4, 36419), (5, 36458), (6, 36467), (7, 36548), (10, 36767), (Start: 33 @36872 has 39 MA's), (85, 37250),

Gene: Highbury\_85 Start: 51828, Stop: 52190, Start Num: 38  
Candidate Starts for Highbury\_85:  
(29, 51801), (Start: 38 @51828 has 111 MA's), (62, 52041), (73, 52125), (74, 52137), (75, 52143), (81, 52179),

Gene: Holt\_91 Start: 52953, Stop: 53315, Start Num: 38  
Candidate Starts for Holt\_91:  
(29, 52926), (Start: 38 @52953 has 111 MA's), (62, 53166), (73, 53250), (74, 53262), (75, 53268), (81, 53304),

Gene: Hoonter\_89 Start: 52399, Stop: 52761, Start Num: 38  
Candidate Starts for Hoonter\_89:  
(27, 52366), (Start: 38 @52399 has 111 MA's), (62, 52612), (63, 52627), (73, 52696), (74, 52708), (75, 52714), (81, 52750),

Gene: Hohey\_86 Start: 52369, Stop: 52731, Start Num: 38  
Candidate Starts for Hohey\_86:  
(29, 52342), (Start: 38 @52369 has 111 MA's), (62, 52582), (73, 52666), (74, 52678), (75, 52684), (81, 52720),

Gene: HotPotato\_62 Start: 40281, Stop: 40673, Start Num: 36  
Candidate Starts for HotPotato\_62:  
(Start: 36 @40281 has 52 MA's), (51, 40431),

Gene: HufflyPuff\_89 Start: 53202, Stop: 53564, Start Num: 38  
Candidate Starts for HufflyPuff\_89:  
(29, 53175), (Start: 38 @53202 has 111 MA's), (62, 53415), (73, 53499), (74, 53511), (75, 53517), (76, 53523), (81, 53553),

Gene: IHOP\_84 Start: 52301, Stop: 52663, Start Num: 38  
Candidate Starts for IHOP\_84:  
(29, 52274), (Start: 38 @52301 has 111 MA's), (62, 52514), (73, 52598), (74, 52610), (75, 52616), (81, 52652),

Gene: IPhane7\_71 Start: 46680, Stop: 47099, Start Num: 35  
Candidate Starts for IPhane7\_71:  
(Start: 31 @46671 has 8 MA's), (Start: 35 @46680 has 7 MA's), (43, 46758), (53, 46845), (59, 46875), (64, 46917), (73, 46977), (86, 47052),

Gene: Icee\_87 Start: 52066, Stop: 52428, Start Num: 38  
Candidate Starts for Icee\_87:  
(27, 52033), (Start: 38 @52066 has 111 MA's), (62, 52279), (63, 52294), (73, 52363), (74, 52375), (75, 52381), (81, 52417),

Gene: Impisi\_55 Start: 35581, Stop: 35973, Start Num: 33  
Candidate Starts for Impisi\_55:  
(8, 35458), (11, 35479), (16, 35506), (Start: 33 @35581 has 39 MA's), (75, 35902),

Gene: Inca\_83 Start: 50790, Stop: 51152, Start Num: 39  
Candidate Starts for Inca\_83:  
(Start: 32 @50769 has 3 MA's), (Start: 39 @50790 has 12 MA's), (62, 51003), (73, 51087), (74, 51099), (75, 51105), (81, 51141),

Gene: InvictusManeo\_63 Start: 45860, Stop: 46225, Start Num: 36  
Candidate Starts for InvictusManeo\_63:  
(19, 45797), (Start: 36 @45860 has 52 MA's), (Start: 39 @45872 has 12 MA's), (46, 45962), (49, 46001), (54, 46025), (60, 46052), (68, 46121), (69, 46124), (74, 46166), (75, 46172), (76, 46178), (78, 46190), (81, 46208),

Gene: Izel\_72 Start: 46666, Stop: 47094, Start Num: 31  
Candidate Starts for Izel\_72:  
(Start: 31 @46666 has 8 MA's), (Start: 35 @46675 has 7 MA's), (43, 46753), (53, 46840), (59, 46870), (64, 46912), (73, 46972), (86, 47047),

Gene: Jamie19\_48 Start: 34075, Stop: 34467, Start Num: 33  
Candidate Starts for Jamie19\_48:  
(8, 33952), (11, 33973), (16, 34000), (Start: 33 @34075 has 39 MA's), (75, 34396),

Gene: JeTaime\_86 Start: 53018, Stop: 53380, Start Num: 38  
Candidate Starts for JeTaime\_86:  
(29, 52991), (Start: 38 @53018 has 111 MA's), (62, 53231), (73, 53315), (74, 53327), (75, 53333), (81, 53369),

Gene: Jojo24\_56 Start: 37218, Stop: 37661, Start Num: 33

Candidate Starts for Jojo24\_56:

(Start: 33 @37218 has 39 MA's), (75, 37545), (85, 37596),

Gene: Judy\_67 Start: 41178, Stop: 41567, Start Num: 36

Candidate Starts for Judy\_67:

(Start: 36 @41178 has 52 MA's), (51, 41328), (63, 41403), (76, 41496),

Gene: Kanye\_83 Start: 51885, Stop: 52247, Start Num: 38

Candidate Starts for Kanye\_83:

(29, 51858), (Start: 38 @51885 has 111 MA's), (62, 52098), (73, 52182), (74, 52194), (75, 52200), (81, 52236),

Gene: Karkharias\_62 Start: 39837, Stop: 40226, Start Num: 36

Candidate Starts for Karkharias\_62:

(Start: 36 @39837 has 52 MA's), (51, 39987), (70, 40113),

Gene: KayMoney\_63 Start: 40303, Stop: 40695, Start Num: 36

Candidate Starts for KayMoney\_63:

(13, 40213), (15, 40216), (Start: 36 @40303 has 52 MA's), (51, 40453),

Gene: Kevin1\_51 Start: 34560, Stop: 34952, Start Num: 33

Candidate Starts for Kevin1\_51:

(9, 34452), (Start: 33 @34560 has 39 MA's), (75, 34881), (76, 34887), (77, 34896),

Gene: Kimchi\_90 Start: 52405, Stop: 52767, Start Num: 38

Candidate Starts for Kimchi\_90:

(27, 52372), (Start: 38 @52405 has 111 MA's), (62, 52618), (73, 52702), (74, 52714), (75, 52720), (81, 52756),

Gene: Kithara\_59 Start: 44925, Stop: 44470, Start Num: 36

Candidate Starts for Kithara\_59:

(12, 45027), (Start: 36 @44925 has 52 MA's), (40, 44883), (72, 44625), (75, 44595),

Gene: KleverKiS\_70 Start: 46397, Stop: 46816, Start Num: 35

Candidate Starts for KleverKiS\_70:

(Start: 31 @46388 has 8 MA's), (Start: 35 @46397 has 7 MA's), (43, 46475), (53, 46562), (59, 46592), (64, 46634), (73, 46694), (86, 46769),

Gene: Kostya\_86 Start: 52403, Stop: 52765, Start Num: 38

Candidate Starts for Kostya\_86:

(29, 52376), (Start: 38 @52403 has 111 MA's), (62, 52616), (73, 52700), (74, 52712), (75, 52718), (81, 52754),

Gene: Kratio\_63 Start: 45599, Stop: 45964, Start Num: 36

Candidate Starts for Kratio\_63:

(19, 45536), (Start: 36 @45599 has 52 MA's), (Start: 39 @45611 has 12 MA's), (46, 45701), (49, 45740), (54, 45764), (60, 45791), (68, 45860), (69, 45863), (74, 45905), (75, 45911), (76, 45917), (78, 45929), (81, 45947),

Gene: Kukla\_66 Start: 40006, Stop: 40383, Start Num: 36

Candidate Starts for Kukla\_66:

(Start: 36 @40006 has 52 MA's), (41, 40060), (46, 40108), (54, 40171), (55, 40174), (63, 40231), (69, 40270), (74, 40312), (79, 40342), (80, 40345), (86, 40375),

Gene: Kumao\_67 Start: 47222, Stop: 47653, Start Num: 30

Candidate Starts for Kumao\_67:

(Start: 30 @47222 has 1 MA's), (63, 47462), (68, 47498), (76, 47555), (78, 47567), (84, 47600),

Gene: Leston\_65 Start: 47546, Stop: 48001, Start Num: 14

Candidate Starts for Leston\_65:

(Start: 14 @47546 has 2 MA's), (18, 47573), (19, 47576), (Start: 36 @47636 has 52 MA's), (Start: 39 @47648 has 12 MA's), (46, 47738), (49, 47777), (54, 47801), (60, 47828), (68, 47897), (69, 47900), (75, 47948), (76, 47954), (82, 47990),

Gene: LilDirt\_62 Start: 45618, Stop: 45983, Start Num: 36

Candidate Starts for LilDirt\_62:

(19, 45555), (Start: 36 @45618 has 52 MA's), (Start: 39 @45630 has 12 MA's), (46, 45720), (49, 45759), (54, 45783), (60, 45810), (68, 45879), (69, 45882), (74, 45924), (75, 45930), (76, 45936), (78, 45948), (81, 45966),

Gene: Lilac\_88 Start: 52154, Stop: 52516, Start Num: 38

Candidate Starts for Lilac\_88:

(29, 52127), (Start: 38 @52154 has 111 MA's), (62, 52367), (63, 52382), (73, 52451), (74, 52463), (75, 52469), (81, 52505),

Gene: LilhomieP\_71 Start: 47159, Stop: 47578, Start Num: 35

Candidate Starts for LilhomieP\_71:

(Start: 31 @47150 has 8 MA's), (Start: 35 @47159 has 7 MA's), (43, 47237), (53, 47324), (59, 47354), (64, 47396), (73, 47456), (86, 47531),

Gene: Lilizi\_87 Start: 51867, Stop: 52229, Start Num: 38

Candidate Starts for Lilizi\_87:

(29, 51840), (Start: 38 @51867 has 111 MA's), (62, 52080), (73, 52164), (74, 52176), (75, 52182), (81, 52218),

Gene: Lilpickle\_85 Start: 51755, Stop: 52117, Start Num: 38

Candidate Starts for Lilpickle\_85:

(29, 51728), (Start: 38 @51755 has 111 MA's), (62, 51968), (73, 52052), (74, 52064), (75, 52070), (81, 52106),

Gene: LilyBell\_63 Start: 39885, Stop: 40274, Start Num: 36

Candidate Starts for LilyBell\_63:

(Start: 36 @39885 has 52 MA's), (51, 40035),

Gene: LittleRon\_59 Start: 39811, Stop: 40230, Start Num: 25

Candidate Starts for LittleRon\_59:

(25, 39811), (51, 39988),

Gene: MISSy\_87 Start: 52261, Stop: 52623, Start Num: 38

Candidate Starts for MISSy\_87:

(29, 52234), (Start: 38 @52261 has 111 MA's), (62, 52474), (73, 52558), (74, 52570), (75, 52576), (81, 52612),

Gene: MPhalcon\_87 Start: 52254, Stop: 52616, Start Num: 38

Candidate Starts for MPhalcon\_87:

(29, 52227), (Start: 38 @52254 has 111 MA's), (62, 52467), (73, 52551), (74, 52563), (75, 52569), (81, 52605),

Gene: MadamMonkfish\_86 Start: 51482, Stop: 51844, Start Num: 38

Candidate Starts for MadamMonkfish\_86:

(29, 51455), (Start: 38 @51482 has 111 MA's), (62, 51695), (73, 51779), (74, 51791), (75, 51797), (81, 51833),

Gene: Magsby\_49 Start: 34533, Stop: 34925, Start Num: 33

Candidate Starts for Magsby\_49:

(Start: 33 @34533 has 39 MA's), (75, 34854),

Gene: Manda\_88 Start: 53750, Stop: 54112, Start Num: 39

Candidate Starts for Manda\_88:

(Start: 32 @53729 has 3 MA's), (Start: 39 @53750 has 12 MA's), (62, 53963), (73, 54047), (74, 54059), (75, 54065), (81, 54101),

Gene: Mao1\_69 Start: 50980, Stop: 51408, Start Num: 36

Candidate Starts for Mao1\_69:

(Start: 36 @50980 has 52 MA's), (41, 51034), (46, 51085), (49, 51124), (50, 51130), (61, 51199), (63, 51241), (65, 51265), (67, 51274), (68, 51277), (75, 51328), (77, 51343), (79, 51352),

Gene: Marshmallow\_84 Start: 53031, Stop: 53393, Start Num: 38

Candidate Starts for Marshmallow\_84:

(29, 53004), (Start: 38 @53031 has 111 MA's), (62, 53244), (73, 53328), (74, 53340), (75, 53346), (81, 53382),

Gene: MaryV\_85 Start: 52221, Stop: 52625, Start Num: 36

Candidate Starts for MaryV\_85:

(16, 52140), (Start: 36 @52221 has 52 MA's), (44, 52308), (47, 52356), (52, 52380), (56, 52401), (57, 52407), (58, 52416), (66, 52518), (69, 52530), (75, 52578), (76, 52584), (79, 52602),

Gene: Mask\_67 Start: 53263, Stop: 53691, Start Num: 36

Candidate Starts for Mask\_67:

(Start: 36 @53263 has 52 MA's), (41, 53317), (46, 53368), (49, 53407), (50, 53413), (61, 53482), (65, 53548), (66, 53551), (68, 53560), (75, 53611), (77, 53626), (79, 53635),

Gene: Maxxinista\_88 Start: 52127, Stop: 52489, Start Num: 38

Candidate Starts for Maxxinista\_88:

(29, 52100), (Start: 38 @52127 has 111 MA's), (62, 52340), (73, 52424), (74, 52436), (75, 52442), (81, 52478),

Gene: Melville\_52 Start: 34517, Stop: 34909, Start Num: 33

Candidate Starts for Melville\_52:

(Start: 33 @34517 has 39 MA's), (75, 34838),

Gene: Mindy\_85 Start: 51283, Stop: 51666, Start Num: 32

Candidate Starts for Mindy\_85:

(Start: 32 @51283 has 3 MA's), (Start: 39 @51304 has 12 MA's), (62, 51517), (73, 51601), (74, 51613), (75, 51619), (81, 51655),

Gene: Miniwave\_81 Start: 51799, Stop: 52161, Start Num: 38

Candidate Starts for Miniwave\_81:

(29, 51772), (Start: 38 @51799 has 111 MA's), (62, 52012), (73, 52096), (74, 52108), (75, 52114), (81, 52150),

Gene: Miryou\_69 Start: 50262, Stop: 50627, Start Num: 36

Candidate Starts for Miryou\_69:

(Start: 14 @50172 has 2 MA's), (18, 50199), (19, 50202), (Start: 36 @50262 has 52 MA's), (Start: 39 @50274 has 12 MA's), (46, 50364), (49, 50403), (54, 50427), (60, 50454), (68, 50523), (69, 50526), (74, 50568), (75, 50574), (76, 50580), (82, 50616),

Gene: Misfit\_87 Start: 53273, Stop: 53635, Start Num: 38

Candidate Starts for Misfit\_87:

(29, 53246), (Start: 38 @53273 has 111 MA's), (62, 53486), (73, 53570), (74, 53582), (75, 53588), (81, 53624),

Gene: Moldemort\_89 Start: 52218, Stop: 52580, Start Num: 38

Candidate Starts for Moldemort\_89:

(27, 52185), (Start: 38 @52218 has 111 MA's), (62, 52431), (63, 52446), (73, 52515), (74, 52527), (75, 52533), (81, 52569),

Gene: MollyToe\_81 Start: 51100, Stop: 51462, Start Num: 38

Candidate Starts for MollyToe\_81:

(29, 51073), (Start: 38 @51100 has 111 MA's), (62, 51313), (73, 51397), (74, 51409), (75, 51415), (81, 51451),

Gene: Mosby\_82 Start: 51556, Stop: 51918, Start Num: 38

Candidate Starts for Mosby\_82:

(29, 51529), (Start: 38 @51556 has 111 MA's), (62, 51769), (73, 51853), (74, 51865), (75, 51871), (81, 51907),

Gene: MrMagoo\_81 Start: 49270, Stop: 49671, Start Num: 36

Candidate Starts for MrMagoo\_81:

(Start: 36 @49270 has 52 MA's), (49, 49414), (64, 49507), (73, 49567), (81, 49621),

Gene: Murica\_89 Start: 53202, Stop: 53564, Start Num: 38

Candidate Starts for Murica\_89:

(29, 53175), (Start: 38 @53202 has 111 MA's), (62, 53415), (73, 53499), (74, 53511), (75, 53517), (81, 53553),

Gene: Murphy\_86 Start: 52639, Stop: 53001, Start Num: 38

Candidate Starts for Murphy\_86:

(29, 52612), (Start: 38 @52639 has 111 MA's), (62, 52852), (73, 52936), (74, 52948), (75, 52954), (81, 52990),

Gene: Myrale\_86 Start: 52762, Stop: 53124, Start Num: 38

Candidate Starts for Myrale\_86:

(27, 52729), (Start: 38 @52762 has 111 MA's), (62, 52975), (73, 53059), (74, 53071), (75, 53077), (81, 53113),

Gene: Nala\_88 Start: 52763, Stop: 53125, Start Num: 38

Candidate Starts for Nala\_88:

(29, 52736), (Start: 38 @52763 has 111 MA's), (62, 52976), (73, 53060), (74, 53072), (75, 53078), (81, 53114),

Gene: Nanosmite\_76 Start: 48317, Stop: 48718, Start Num: 36

Candidate Starts for Nanosmite\_76:

(Start: 36 @48317 has 52 MA's), (53, 48482), (64, 48554), (73, 48614), (77, 48647), (81, 48668),

Gene: NelitzaMV\_84 Start: 51845, Stop: 52207, Start Num: 38

Candidate Starts for NelitzaMV\_84:

(29, 51818), (Start: 38 @51845 has 111 MA's), (62, 52058), (73, 52142), (74, 52154), (75, 52160), (81, 52196),

Gene: Nенаe\_54 Start: 35786, Stop: 36178, Start Num: 33

Candidate Starts for Nенаe\_54:

(8, 35663), (11, 35684), (16, 35711), (Start: 33 @35786 has 39 MA's), (75, 36107),

Gene: NidoQ\_60 Start: 40302, Stop: 40691, Start Num: 36

Candidate Starts for NidoQ\_60:

(Start: 36 @40302 has 52 MA's), (51, 40452), (63, 40527), (76, 40620),

Gene: NikkiHotWheels\_65 Start: 39882, Stop: 40277, Start Num: 30

Candidate Starts for NikkiHotWheels\_65:

(Start: 30 @39882 has 1 MA's), (Start: 36 @39888 has 52 MA's), (51, 40038),

Gene: Nimrod\_87 Start: 53466, Stop: 53828, Start Num: 38

Candidate Starts for Nimrod\_87:

(29, 53439), (Start: 38 @53466 has 111 MA's), (62, 53679), (73, 53763), (74, 53775), (75, 53781), (81, 53817),

Gene: NoSleep\_87 Start: 52100, Stop: 52462, Start Num: 38

Candidate Starts for NoSleep\_87:

(29, 52073), (Start: 38 @52100 has 111 MA's), (62, 52313), (73, 52397), (74, 52409), (75, 52415), (81, 52451),

Gene: NonchalantPear\_84 Start: 51956, Stop: 52318, Start Num: 38

Candidate Starts for NonchalantPear\_84:

(29, 51929), (Start: 38 @51956 has 111 MA's), (62, 52169), (73, 52253), (74, 52265), (75, 52271), (81, 52307),

Gene: OkiRoe\_66 Start: 47934, Stop: 48299, Start Num: 36

Candidate Starts for OkiRoe\_66:

(Start: 14 @47844 has 2 MA's), (18, 47871), (19, 47874), (Start: 36 @47934 has 52 MA's), (Start: 39 @47946 has 12 MA's), (46, 48036), (49, 48075), (54, 48099), (60, 48126), (68, 48195), (69, 48198), (75, 48246), (76, 48252), (82, 48288),

Gene: Omnicron\_69 Start: 48055, Stop: 48420, Start Num: 36

Candidate Starts for Omnicron\_69:

(23, 48019), (Start: 36 @48055 has 52 MA's), (Start: 39 @48067 has 12 MA's), (46, 48157), (49, 48196), (54, 48220), (60, 48247), (68, 48316), (69, 48319), (74, 48361), (75, 48367), (76, 48373), (78, 48385), (83, 48412),

Gene: OrionPax\_85 Start: 51851, Stop: 52213, Start Num: 38

Candidate Starts for OrionPax\_85:

(29, 51824), (Start: 38 @51851 has 111 MA's), (62, 52064), (73, 52148), (74, 52160), (75, 52166), (81, 52202),

Gene: PaddyBaddy\_86 Start: 51851, Stop: 52213, Start Num: 38  
Candidate Starts for PaddyBaddy\_86:  
(29, 51824), (Start: 38 @51851 has 111 MA's), (62, 52064), (73, 52148), (74, 52160), (75, 52166), (81, 52202),

Gene: Palpatine\_88 Start: 53229, Stop: 53591, Start Num: 38  
Candidate Starts for Palpatine\_88:  
(29, 53202), (Start: 38 @53229 has 111 MA's), (62, 53442), (73, 53526), (74, 53538), (75, 53544), (81, 53580),

Gene: Panchino\_47 Start: 35421, Stop: 35813, Start Num: 33  
Candidate Starts for Panchino\_47:  
(8, 35298), (11, 35319), (16, 35346), (Start: 33 @35421 has 39 MA's), (75, 35742),

Gene: Paola\_65 Start: 47507, Stop: 47872, Start Num: 36  
Candidate Starts for Paola\_65:  
(Start: 14 @47417 has 2 MA's), (18, 47444), (19, 47447), (Start: 36 @47507 has 52 MA's), (Start: 39 @47519 has 12 MA's), (46, 47609), (49, 47648), (54, 47672), (60, 47699), (68, 47768), (69, 47771), (75, 47819), (76, 47825), (82, 47861),

Gene: Paperbeatsrock\_85 Start: 52477, Stop: 52839, Start Num: 38  
Candidate Starts for Paperbeatsrock\_85:  
(29, 52450), (Start: 38 @52477 has 111 MA's), (62, 52690), (73, 52774), (74, 52786), (75, 52792), (81, 52828),

Gene: Parmesanjohn\_49 Start: 34536, Stop: 34928, Start Num: 33  
Candidate Starts for Parmesanjohn\_49:  
(Start: 33 @34536 has 39 MA's), (75, 34857),

Gene: Pat3\_84 Start: 50872, Stop: 51234, Start Num: 38  
Candidate Starts for Pat3\_84:  
(27, 50839), (Start: 38 @50872 has 111 MA's), (62, 51085), (63, 51100), (73, 51169), (74, 51181), (75, 51187), (81, 51223),

Gene: Peas\_64 Start: 41595, Stop: 41996, Start Num: 36  
Candidate Starts for Peas\_64:  
(Start: 36 @41595 has 52 MA's), (51, 41745),

Gene: PegLeg\_70 Start: 46420, Stop: 46839, Start Num: 35  
Candidate Starts for PegLeg\_70:  
(Start: 31 @46411 has 8 MA's), (Start: 35 @46420 has 7 MA's), (43, 46498), (53, 46585), (59, 46615), (64, 46657), (73, 46717), (86, 46792),

Gene: PeggyLeg03\_63 Start: 40587, Stop: 40976, Start Num: 36  
Candidate Starts for PeggyLeg03\_63:  
(Start: 36 @40587 has 52 MA's), (51, 40737),

Gene: Petra64142\_90 Start: 53696, Stop: 54058, Start Num: 38  
Candidate Starts for Petra64142\_90:  
(29, 53669), (Start: 38 @53696 has 111 MA's), (62, 53909), (73, 53993), (74, 54005), (75, 54011), (81, 54047),

Gene: PetriParty\_66 Start: 39175, Stop: 39552, Start Num: 36

Candidate Starts for PetriParty\_66:

(29, 39163), (Start: 36 @39175 has 52 MA's), (41, 39229), (43, 39253), (46, 39277), (54, 39340), (55, 39343), (69, 39439), (74, 39481), (79, 39511), (80, 39514), (86, 39544),

Gene: Phaja\_84 Start: 52303, Stop: 52665, Start Num: 38

Candidate Starts for Phaja\_84:

(29, 52276), (Start: 38 @52303 has 111 MA's), (62, 52516), (73, 52600), (74, 52612), (75, 52618), (81, 52654),

Gene: PhancyPhin\_54 Start: 35780, Stop: 36172, Start Num: 33

Candidate Starts for PhancyPhin\_54:

(8, 35657), (11, 35678), (16, 35705), (Start: 33 @35780 has 39 MA's), (75, 36101),

Gene: Pharsalus\_83 Start: 52277, Stop: 52639, Start Num: 38

Candidate Starts for Pharsalus\_83:

(29, 52250), (Start: 38 @52277 has 111 MA's), (62, 52490), (73, 52574), (74, 52586), (75, 52592), (81, 52628),

Gene: PhatBacter\_90 Start: 53249, Stop: 53611, Start Num: 38

Candidate Starts for PhatBacter\_90:

(29, 53222), (Start: 38 @53249 has 111 MA's), (62, 53462), (73, 53546), (74, 53558), (75, 53564), (81, 53600),

Gene: Phaux\_88 Start: 53244, Stop: 53606, Start Num: 38

Candidate Starts for Phaux\_88:

(29, 53217), (Start: 38 @53244 has 111 MA's), (62, 53457), (73, 53541), (74, 53553), (75, 53559), (81, 53595),

Gene: Phayonce\_51 Start: 37143, Stop: 37571, Start Num: 36

Candidate Starts for Phayonce\_51:

(Start: 36 @37143 has 52 MA's), (41, 37197), (46, 37248), (49, 37287), (50, 37293), (61, 37362), (63, 37404), (65, 37428), (67, 37437), (68, 37440), (75, 37491), (77, 37506), (79, 37515),

Gene: Phloss\_47 Start: 33943, Stop: 34335, Start Num: 33

Candidate Starts for Phloss\_47:

(Start: 33 @33943 has 39 MA's), (75, 34264),

Gene: Phrann\_51 Start: 36063, Stop: 36455, Start Num: 33

Candidate Starts for Phrann\_51:

(8, 35940), (11, 35961), (16, 35988), (Start: 33 @36063 has 39 MA's), (75, 36384),

Gene: Phrux\_83 Start: 51798, Stop: 52160, Start Num: 39

Candidate Starts for Phrux\_83:

(Start: 32 @51777 has 3 MA's), (Start: 39 @51798 has 12 MA's), (62, 52011), (73, 52095), (74, 52107), (75, 52113), (81, 52149),

Gene: Pipsqueaks\_49 Start: 34513, Stop: 34905, Start Num: 33

Candidate Starts for Pipsqueaks\_49:

(Start: 33 @34513 has 39 MA's), (75, 34834),

Gene: Policronamos\_89 Start: 53244, Stop: 53606, Start Num: 38

Candidate Starts for Policronamos\_89:

(29, 53217), (Start: 38 @53244 has 111 MA's), (62, 53457), (73, 53541), (74, 53553), (75, 53559), (81, 53595),

Gene: Porky\_85 Start: 51667, Stop: 52029, Start Num: 38

Candidate Starts for Porky\_85:

(29, 51640), (Start: 38 @51667 has 111 MA's), (62, 51880), (73, 51964), (74, 51976), (75, 51982), (81, 52018),

Gene: Ptowny\_83 Start: 51139, Stop: 51501, Start Num: 38

Candidate Starts for Ptowny\_83:

(29, 51112), (Start: 38 @51139 has 111 MA's), (62, 51352), (73, 51436), (74, 51448), (75, 51454), (81, 51490),

Gene: Pucara\_59 Start: 40031, Stop: 40420, Start Num: 36

Candidate Starts for Pucara\_59:

(Start: 36 @40031 has 52 MA's), (51, 40181),

Gene: Pumpkin\_89 Start: 52895, Stop: 53257, Start Num: 38

Candidate Starts for Pumpkin\_89:

(29, 52868), (Start: 38 @52895 has 111 MA's), (62, 53108), (73, 53192), (74, 53204), (75, 53210), (81, 53246),

Gene: Purgamenstris\_54 Start: 35784, Stop: 36176, Start Num: 33

Candidate Starts for Purgamenstris\_54:

(8, 35661), (11, 35682), (16, 35709), (Start: 33 @35784 has 39 MA's), (75, 36105),

Gene: Quallification\_87 Start: 52885, Stop: 53247, Start Num: 38

Candidate Starts for Quallification\_87:

(29, 52858), (Start: 38 @52885 has 111 MA's), (62, 53098), (73, 53182), (74, 53194), (75, 53200), (81, 53236),

Gene: Rakim\_87 Start: 52214, Stop: 52576, Start Num: 38

Candidate Starts for Rakim\_87:

(27, 52181), (Start: 38 @52214 has 111 MA's), (62, 52427), (73, 52511), (74, 52523), (75, 52529), (81, 52565),

Gene: Rando14\_68 Start: 46839, Stop: 47204, Start Num: 36

Candidate Starts for Rando14\_68:

(23, 46803), (Start: 36 @46839 has 52 MA's), (Start: 39 @46851 has 12 MA's), (46, 46941), (49, 46980), (53, 47001), (54, 47004), (60, 47031), (68, 47100), (69, 47103), (74, 47145), (75, 47151), (76, 47157), (78, 47169), (83, 47196),

Gene: Raymond7\_48 Start: 35572, Stop: 35964, Start Num: 33

Candidate Starts for Raymond7\_48:

(8, 35449), (11, 35470), (16, 35497), (Start: 33 @35572 has 39 MA's), (75, 35893),

Gene: Redi\_54 Start: 35783, Stop: 36175, Start Num: 33

Candidate Starts for Redi\_54:

(8, 35660), (11, 35681), (16, 35708), (Start: 33 @35783 has 39 MA's), (75, 36104),

Gene: Reindeer\_73 Start: 47812, Stop: 48231, Start Num: 35

Candidate Starts for Reindeer\_73:

(Start: 31 @47803 has 8 MA's), (Start: 35 @47812 has 7 MA's), (48, 47950), (62, 48025), (64, 48049), (73, 48109), (86, 48184),

Gene: Rey\_78 Start: 48943, Stop: 49344, Start Num: 36

Candidate Starts for Rey\_78:

(Start: 36 @48943 has 52 MA's), (49, 49087), (64, 49180), (73, 49240), (81, 49294),

Gene: Reyja\_59 Start: 38515, Stop: 38931, Start Num: 36

Candidate Starts for Reyja\_59:

(5, 38104), (6, 38113), (7, 38194), (10, 38413), (Start: 36 @38515 has 52 MA's), (65, 38767), (69, 38782), (75, 38830),

Gene: Rimmer\_86 Start: 52254, Stop: 52616, Start Num: 37

Candidate Starts for Rimmer\_86:

(Start: 37 @52254 has 2 MA's), (62, 52467), (63, 52482), (73, 52551), (74, 52563), (75, 52569), (81, 52605),

Gene: RiverMonster\_86 Start: 52415, Stop: 52777, Start Num: 38

Candidate Starts for RiverMonster\_86:

(29, 52388), (Start: 38 @52415 has 111 MA's), (62, 52628), (73, 52712), (74, 52724), (75, 52730), (81, 52766),

Gene: RootBeer\_52 Start: 36912, Stop: 37301, Start Num: 36

Candidate Starts for RootBeer\_52:

(Start: 36 @36912 has 52 MA's), (51, 37062),

Gene: RoseMarie\_76 Start: 50037, Stop: 50456, Start Num: 35

Candidate Starts for RoseMarie\_76:

(Start: 31 @50028 has 8 MA's), (Start: 35 @50037 has 7 MA's), (53, 50202), (59, 50232), (64, 50274), (73, 50334), (86, 50409),

Gene: Rubeelu\_52 Start: 35124, Stop: 35516, Start Num: 33

Candidate Starts for Rubeelu\_52:

(9, 35016), (Start: 33 @35124 has 39 MA's), (75, 35445),

Gene: Saints25\_85 Start: 51828, Stop: 52190, Start Num: 38

Candidate Starts for Saints25\_85:

(29, 51801), (Start: 38 @51828 has 111 MA's), (62, 52041), (73, 52125), (74, 52137), (75, 52143), (81, 52179),

Gene: Santhid\_54 Start: 36000, Stop: 36518, Start Num: 36

Candidate Starts for Santhid\_54:

(Start: 36 @36000 has 52 MA's), (75, 36315), (88, 36435), (90, 36468),

Gene: Sassay\_81 Start: 50518, Stop: 50880, Start Num: 38

Candidate Starts for Sassay\_81:

(29, 50491), (Start: 38 @50518 has 111 MA's), (62, 50731), (73, 50815), (74, 50827), (75, 50833), (81, 50869),

Gene: Schnauzer\_50 Start: 34536, Stop: 34928, Start Num: 33

Candidate Starts for Schnauzer\_50:

(Start: 33 @34536 has 39 MA's), (75, 34857),

Gene: ShamWow\_86 Start: 52698, Stop: 53060, Start Num: 39  
Candidate Starts for ShamWow\_86:  
(Start: 32 @52677 has 3 MA's), (Start: 39 @52698 has 12 MA's), (62, 52911), (73, 52995), (74, 53007),  
(75, 53013), (81, 53049),

Gene: ShereKhan\_84 Start: 52810, Stop: 53172, Start Num: 38  
Candidate Starts for ShereKhan\_84:  
(29, 52783), (Start: 38 @52810 has 111 MA's), (62, 53023), (73, 53107), (74, 53119), (75, 53125), (81,  
53161),

Gene: ShrimpFriedEgg\_54 Start: 35783, Stop: 36175, Start Num: 33  
Candidate Starts for ShrimpFriedEgg\_54:  
(8, 35660), (11, 35681), (16, 35708), (Start: 33 @35783 has 39 MA's), (75, 36104),

Gene: Silvafighter\_50 Start: 34509, Stop: 34901, Start Num: 33  
Candidate Starts for Silvafighter\_50:  
(Start: 33 @34509 has 39 MA's), (75, 34830),

Gene: Simpliphy\_85 Start: 51818, Stop: 52180, Start Num: 38  
Candidate Starts for Simpliphy\_85:  
(29, 51791), (Start: 38 @51818 has 111 MA's), (62, 52031), (73, 52115), (74, 52127), (75, 52133), (81,  
52169),

Gene: SirDuracell\_86 Start: 51469, Stop: 51831, Start Num: 38  
Candidate Starts for SirDuracell\_86:  
(28, 51442), (Start: 38 @51469 has 111 MA's), (62, 51682), (63, 51697), (73, 51766), (74, 51778), (75,  
51784), (81, 51820),

Gene: Skinny\_74 Start: 47579, Stop: 48007, Start Num: 31  
Candidate Starts for Skinny\_74:  
(Start: 31 @47579 has 8 MA's), (Start: 35 @47588 has 7 MA's), (43, 47666), (53, 47753), (59, 47783),  
(64, 47825), (73, 47885), (86, 47960),

Gene: SlimJimmy\_71 Start: 47135, Stop: 47563, Start Num: 31  
Candidate Starts for SlimJimmy\_71:  
(Start: 31 @47135 has 8 MA's), (Start: 35 @47144 has 7 MA's), (43, 47222), (53, 47309), (59, 47339),  
(64, 47381), (73, 47441), (86, 47516),

Gene: Smurph\_49 Start: 34536, Stop: 34928, Start Num: 33  
Candidate Starts for Smurph\_49:  
(Start: 33 @34536 has 39 MA's), (75, 34857),

Gene: Snekmaggedon\_48 Start: 34075, Stop: 34467, Start Num: 33  
Candidate Starts for Snekmaggedon\_48:  
(8, 33952), (11, 33973), (16, 34000), (Start: 33 @34075 has 39 MA's), (75, 34396),

Gene: SoSeph\_66 Start: 47886, Stop: 48251, Start Num: 36  
Candidate Starts for SoSeph\_66:  
(Start: 14 @47796 has 2 MA's), (18, 47823), (19, 47826), (Start: 36 @47886 has 52 MA's), (Start: 39  
@47898 has 12 MA's), (46, 47988), (49, 48027), (54, 48051), (60, 48078), (68, 48147), (69, 48150),  
(74, 48192), (75, 48198), (76, 48204), (82, 48240),

Gene: SophKB\_83 Start: 51496, Stop: 51858, Start Num: 38

Candidate Starts for SophKB\_83:

(29, 51469), (Start: 38 @51496 has 111 MA's), (62, 51709), (73, 51793), (74, 51805), (75, 51811), (81, 51847),

Gene: Sotrice96\_87 Start: 52362, Stop: 52724, Start Num: 38

Candidate Starts for Sotrice96\_87:

(27, 52329), (Start: 38 @52362 has 111 MA's), (62, 52575), (63, 52590), (73, 52659), (74, 52671), (75, 52677), (81, 52713),

Gene: Spartan\_62 Start: 44375, Stop: 44770, Start Num: 36

Candidate Starts for Spartan\_62:

(Start: 36 @44375 has 52 MA's), (45, 44477), (59, 44573), (75, 44693),

Gene: Spinach\_54 Start: 35783, Stop: 36175, Start Num: 33

Candidate Starts for Spinach\_54:

(8, 35660), (11, 35681), (16, 35708), (Start: 33 @35783 has 39 MA's), (75, 36104),

Gene: SpongeBob\_48 Start: 34075, Stop: 34467, Start Num: 33

Candidate Starts for SpongeBob\_48:

(8, 33952), (11, 33973), (16, 34000), (Start: 33 @34075 has 39 MA's), (75, 34396),

Gene: Stank\_89 Start: 52757, Stop: 53119, Start Num: 38

Candidate Starts for Stank\_89:

(29, 52730), (Start: 38 @52757 has 111 MA's), (62, 52970), (73, 53054), (74, 53066), (75, 53072), (81, 53108),

Gene: Stark\_87 Start: 52298, Stop: 52660, Start Num: 38

Candidate Starts for Stark\_87:

(29, 52271), (Start: 38 @52298 has 111 MA's), (62, 52511), (73, 52595), (74, 52607), (75, 52613), (81, 52649),

Gene: StellaBean\_84 Start: 52022, Stop: 52384, Start Num: 39

Candidate Starts for StellaBean\_84:

(Start: 32 @52001 has 3 MA's), (Start: 39 @52022 has 12 MA's), (62, 52235), (73, 52319), (74, 52331), (75, 52337), (81, 52373),

Gene: StolenFromERC\_89 Start: 52402, Stop: 52764, Start Num: 38

Candidate Starts for StolenFromERC\_89:

(27, 52369), (Start: 38 @52402 has 111 MA's), (62, 52615), (73, 52699), (74, 52711), (75, 52717), (81, 52753),

Gene: StormChicken\_88 Start: 53197, Stop: 53559, Start Num: 38

Candidate Starts for StormChicken\_88:

(29, 53170), (Start: 38 @53197 has 111 MA's), (62, 53410), (73, 53494), (74, 53506), (75, 53512), (81, 53548),

Gene: TBrady12\_89 Start: 52238, Stop: 52600, Start Num: 38

Candidate Starts for TBrady12\_89:

(29, 52211), (Start: 38 @52238 has 111 MA's), (62, 52451), (73, 52535), (74, 52547), (75, 52553), (81, 52589),

Gene: Tapioca\_51 Start: 34502, Stop: 34894, Start Num: 33

Candidate Starts for Tapioca\_51:

(Start: 33 @34502 has 39 MA's), (75, 34823),

Gene: Tarkin\_85 Start: 52486, Stop: 52848, Start Num: 38

Candidate Starts for Tarkin\_85:

(29, 52459), (Start: 38 @52486 has 111 MA's), (62, 52699), (73, 52783), (74, 52795), (75, 52801), (81, 52837),

Gene: Tarzan\_57 Start: 37228, Stop: 37659, Start Num: 36

Candidate Starts for Tarzan\_57:

(Start: 36 @37228 has 52 MA's), (75, 37543), (85, 37594), (89, 37651),

Gene: TeamEdward\_87 Start: 52855, Stop: 53217, Start Num: 37

Candidate Starts for TeamEdward\_87:

(Start: 37 @52855 has 2 MA's), (62, 53068), (63, 53083), (73, 53152), (74, 53164), (75, 53170), (81, 53206),

Gene: TeardropMSU\_82 Start: 51486, Stop: 51848, Start Num: 38

Candidate Starts for TeardropMSU\_82:

(29, 51459), (Start: 38 @51486 has 111 MA's), (62, 51699), (73, 51783), (74, 51795), (75, 51801), (81, 51837),

Gene: Teaspoon\_87 Start: 52341, Stop: 52703, Start Num: 39

Candidate Starts for Teaspoon\_87:

(Start: 32 @52320 has 3 MA's), (Start: 39 @52341 has 12 MA's), (62, 52554), (73, 52638), (74, 52650), (75, 52656), (81, 52692),

Gene: Terminus\_89 Start: 53273, Stop: 53635, Start Num: 38

Candidate Starts for Terminus\_89:

(29, 53246), (Start: 38 @53273 has 111 MA's), (62, 53486), (73, 53570), (74, 53582), (75, 53588), (81, 53624),

Gene: Tessdabest\_50 Start: 34533, Stop: 34925, Start Num: 33

Candidate Starts for Tessdabest\_50:

(Start: 33 @34533 has 39 MA's), (75, 34854),

Gene: Thimble\_87 Start: 51718, Stop: 52080, Start Num: 38

Candidate Starts for Thimble\_87:

(29, 51691), (Start: 38 @51718 has 111 MA's), (62, 51931), (73, 52015), (74, 52027), (75, 52033), (81, 52069),

Gene: Thresher\_88 Start: 53357, Stop: 53719, Start Num: 38

Candidate Starts for Thresher\_88:

(29, 53330), (Start: 38 @53357 has 111 MA's), (62, 53570), (73, 53654), (74, 53666), (75, 53672), (81, 53708),

Gene: Thyatira\_68 Start: 49878, Stop: 50243, Start Num: 36

Candidate Starts for Thyatira\_68:

(Start: 14 @49788 has 2 MA's), (18, 49815), (19, 49818), (Start: 36 @49878 has 52 MA's), (Start: 39 @49890 has 12 MA's), (46, 49980), (49, 50019), (54, 50043), (60, 50070), (68, 50139), (69, 50142), (74, 50184), (75, 50190), (76, 50196), (82, 50232),

Gene: Tomaszewski\_81 Start: 51649, Stop: 52011, Start Num: 38

Candidate Starts for Tomaszewski\_81:

(29, 51622), (Start: 38 @51649 has 111 MA's), (62, 51862), (73, 51946), (74, 51958), (75, 51964), (81, 52000),

Gene: Tortoise12\_48 Start: 33219, Stop: 33611, Start Num: 33

Candidate Starts for Tortoise12\_48:

(Start: 33 @33219 has 39 MA's), (75, 33540),

Gene: Toto\_84 Start: 52677, Stop: 53060, Start Num: 32

Candidate Starts for Toto\_84:

(Start: 32 @52677 has 3 MA's), (Start: 39 @52698 has 12 MA's), (62, 52911), (73, 52995), (74, 53007), (75, 53013), (81, 53049),

Gene: TpudiCK\_73 Start: 46670, Stop: 47098, Start Num: 31

Candidate Starts for TpudiCK\_73:

(Start: 31 @46670 has 8 MA's), (Start: 35 @46679 has 7 MA's), (43, 46757), (53, 46844), (59, 46874), (64, 46916), (73, 46976), (86, 47051),

Gene: Traaww1\_82 Start: 51784, Stop: 52146, Start Num: 38

Candidate Starts for Traaww1\_82:

(27, 51751), (Start: 38 @51784 has 111 MA's), (62, 51997), (63, 52012), (73, 52081), (74, 52093), (75, 52099), (81, 52135),

Gene: TripleJ\_65 Start: 39433, Stop: 39810, Start Num: 36

Candidate Starts for TripleJ\_65:

(Start: 36 @39433 has 52 MA's), (41, 39487), (43, 39511), (46, 39535), (54, 39598), (55, 39601), (69, 39697), (74, 39739), (79, 39769), (80, 39772), (86, 39802),

Gene: Tuco\_87 Start: 53245, Stop: 53607, Start Num: 38

Candidate Starts for Tuco\_87:

(29, 53218), (Start: 38 @53245 has 111 MA's), (62, 53458), (73, 53542), (74, 53554), (75, 53560), (81, 53596),

Gene: TyDawg\_71 Start: 46671, Stop: 47099, Start Num: 31

Candidate Starts for TyDawg\_71:

(Start: 31 @46671 has 8 MA's), (Start: 35 @46680 has 7 MA's), (43, 46758), (53, 46845), (59, 46875), (64, 46917), (73, 46977), (86, 47052),

Gene: Ukulele\_81 Start: 51631, Stop: 51993, Start Num: 38

Candidate Starts for Ukulele\_81:

(29, 51604), (Start: 38 @51631 has 111 MA's), (62, 51844), (73, 51928), (74, 51940), (75, 51946), (81, 51982),

Gene: ViviJ\_64 Start: 45617, Stop: 45982, Start Num: 36

Candidate Starts for ViviJ\_64:

(19, 45554), (Start: 36 @45617 has 52 MA's), (Start: 39 @45629 has 12 MA's), (46, 45719), (49, 45758), (54, 45782), (60, 45809), (68, 45878), (69, 45881), (74, 45923), (75, 45929), (76, 45935), (78, 45947), (81, 45965),

Gene: Waterfoul\_67 Start: 47948, Stop: 48313, Start Num: 36

Candidate Starts for Waterfoul\_67:

(Start: 14 @47858 has 2 MA's), (18, 47885), (19, 47888), (Start: 36 @47948 has 52 MA's), (Start: 39 @47960 has 12 MA's), (46, 48050), (49, 48089), (54, 48113), (60, 48140), (68, 48209), (69, 48212), (74, 48254), (75, 48260), (76, 48266), (82, 48302),

Gene: Wiggin\_88 Start: 52185, Stop: 52547, Start Num: 38

Candidate Starts for Wiggin\_88:

(27, 52152), (Start: 38 @52185 has 111 MA's), (62, 52398), (63, 52413), (73, 52482), (74, 52494), (75, 52500), (81, 52536),

Gene: Wildcat\_85 Start: 52231, Stop: 52635, Start Num: 36

Candidate Starts for Wildcat\_85:

(16, 52150), (Start: 36 @52231 has 52 MA's), (44, 52318), (47, 52366), (52, 52390), (56, 52411), (57, 52417), (58, 52426), (66, 52528), (69, 52540), (75, 52588), (76, 52594), (79, 52612),

Gene: Willez\_81 Start: 50518, Stop: 50880, Start Num: 38

Candidate Starts for Willez\_81:

(29, 50491), (Start: 38 @50518 has 111 MA's), (62, 50731), (73, 50815), (74, 50827), (75, 50833),

Gene: Xandras\_85 Start: 51730, Stop: 52092, Start Num: 38

Candidate Starts for Xandras\_85:

(29, 51703), (Start: 38 @51730 has 111 MA's), (62, 51943), (73, 52027), (74, 52039), (75, 52045), (81, 52081),

Gene: Xerxes\_49 Start: 34533, Stop: 34925, Start Num: 33

Candidate Starts for Xerxes\_49:

(Start: 33 @34533 has 39 MA's), (75, 34854),

Gene: YassJohnny\_83 Start: 51649, Stop: 52011, Start Num: 39

Candidate Starts for YassJohnny\_83:

(Start: 32 @51628 has 3 MA's), (Start: 39 @51649 has 12 MA's), (62, 51862), (73, 51946), (74, 51958), (75, 51964), (81, 52000),

Gene: Youngblood\_89 Start: 53200, Stop: 53562, Start Num: 38

Candidate Starts for Youngblood\_89:

(29, 53173), (Start: 38 @53200 has 111 MA's), (62, 53413), (73, 53497), (74, 53509), (75, 53515), (81, 53551),

Gene: xkcd\_89 Start: 53387, Stop: 53749, Start Num: 38

Candidate Starts for xkcd\_89:

(29, 53360), (Start: 38 @53387 has 111 MA's), (62, 53600), (73, 53684), (74, 53696), (75, 53702), (81, 53738),