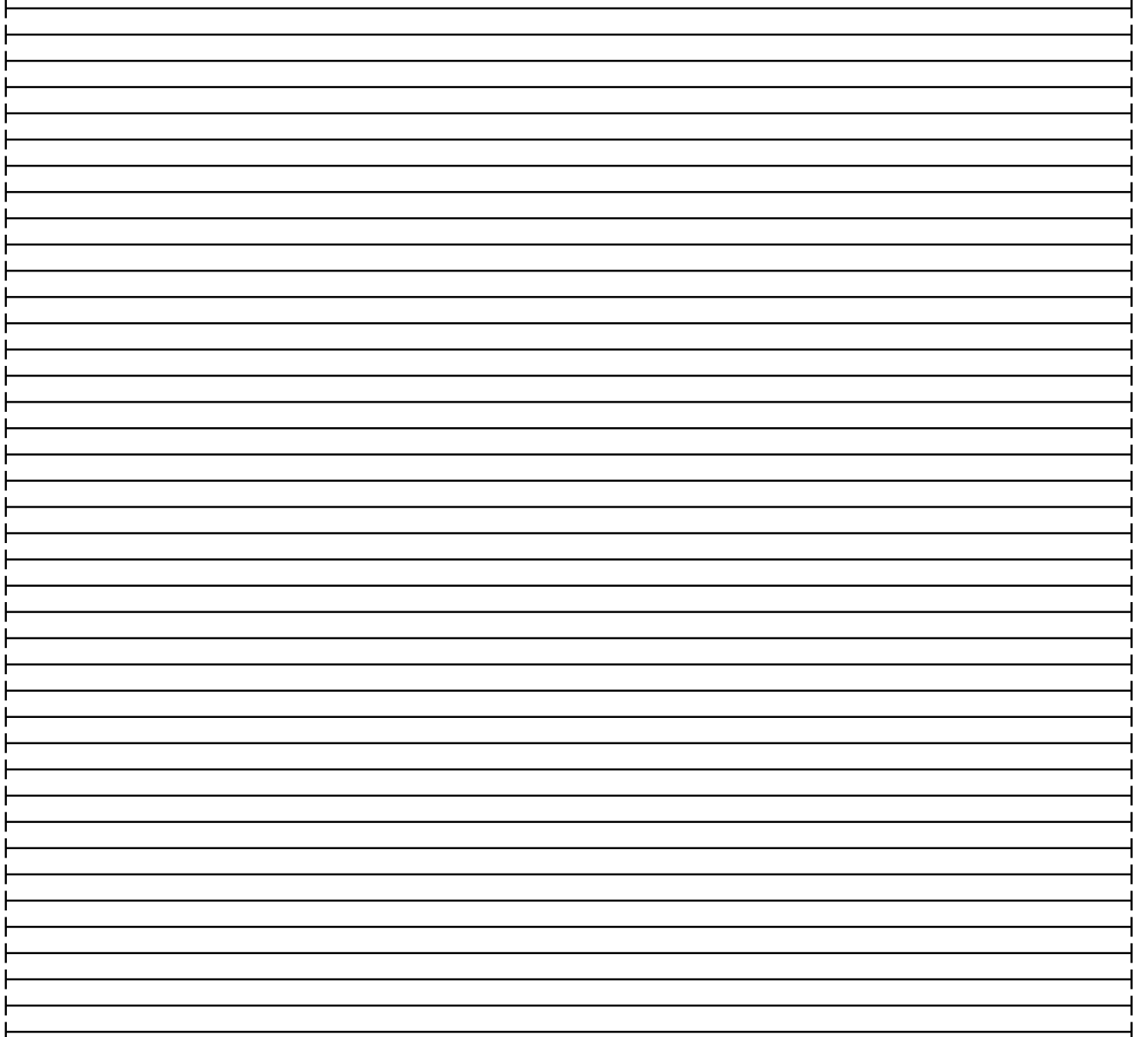
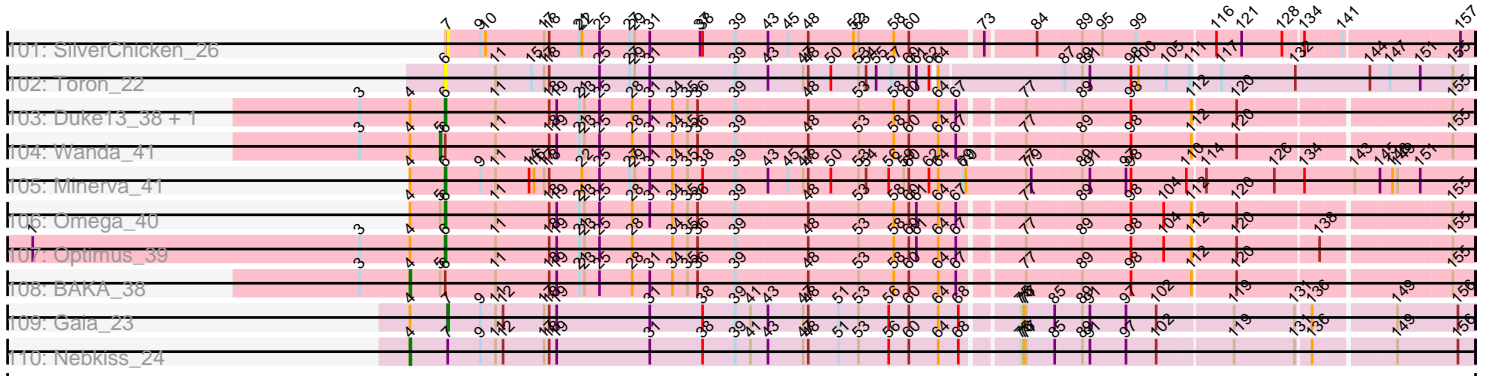


Pham 292495



Note: Tracks are now grouped by subcluster and scaled. Switching in subcluster is indicated by changes in track color. Track scale is now set by default to display the region 30 bp upstream of start 1 to 30 bp downstream of the last possible start. If this default region is judged to be packed too tightly with annotated starts, the track will be further scaled to only show that region of the ORF with annotated starts. This action will be indicated by adding "Zoomed" to the title. For starts, yellow indicates the location of called starts comprised solely of Glimmer/GeneMark auto-annotations, green indicates the location of called starts with at least 1 manual gene annotation.

Pham 292495 Report

This analysis was run 04/18/26 on database version 643.

Pham number 292495 has 238 members, 25 are drafts.

Phages represented in each track:

- Track 1 : Blarby_28
- Track 2 : ByChance_20
- Track 3 : Lucia_21, RitaG_20
- Track 4 : Drago_21, Llij_20, Enby_21, Lorde_21, Rockne_20, VRedHorse_20, PMC_20, Hegedechwinu_21
- Track 5 : Che8_21
- Track 6 : Fruitloop_20, Beanstalk_22, Batiatus_20, Melissauren88_20
- Track 7 : Karhdo_20
- Track 8 : BuzzLyseyear_22
- Track 9 : Polo2Bam_22, Wee_21, DeadP_20
- Track 10 : Vivum_20, LittleE_41, Maravista_20
- Track 11 : Saal_20, Sparkdehlily_20, TDanisky_20, Florinda_20, Quico_21, DRBy19_20, Philus_20, Girafales_21, SwagPiggett_20
- Track 12 : LittleShirley_21, Slim_21, Peridot_22, Emmaloid_21, Rialto_22, Starcevich_21, PhlipPhlop_20, Totinger_21, Flathead_21
- Track 13 : Chevrolet_20, ArcusAngelus_20
- Track 14 : CaptainTrips_21, QuickMath_21, DillTech15_20, Corium_20, Blexus_20, Firehouse51_21, Juice456_22, Cornucopia_21, KingJulian_20, BodEinwohner17_20, MinionDave_21, Marker_21, Wachhund_20, Kimberlium_22, SG4_20, Tootsieroll_21, MulchExplorer_22, PatoPoderoso_20, Radiance_20
- Track 15 : BobaPhett_20, Gorge_20, Mattes_20, James_20, LilMoolah_20, Nivrat_20
- Track 16 : Fastidio_20, Doomslug_22
- Track 17 : Polka14_21, JoeyJr_20, Daenerys_20, Pacc40_20, Dorothy_20, Empress_21, OldBen_20, Scottish_21, Sassafras_20, Inventum_20, Geralt_20, BlueCrab_20, PHappiness_20
- Track 18 : AlpineSix_20, Jinglebell_19, Seabastian_20, OfUltron_20
- Track 19 : Guppsters_21
- Track 20 : Filuzino_20
- Track 21 : XFactor_20, Whatsapiecost_20
- Track 22 : Leperchaun_20
- Track 23 : Awesomesauce_21
- Track 24 : Nichirin_20
- Track 25 : Sandalphon_21, Minnie_21
- Track 26 : Emma_20
- Track 27 : Juniper1_20

- Track 28 : Cabrinians_20, OlympiaSaint_20, FreddyB_20, ShowerHandel_20, Zizzle_20, Burwell21_20, Jarcob_20, Yorick_20, Priscilla_20, Lizziana_20, ShiLan_20, NormanBulbieJr_20, Martik_20, Spoonbill_20
- Track 29 : GigiOuiOui_20
- Track 30 : Piper2020_21, ChickenDinner_21, Aloeri_21
- Track 31 : Royals2015_20
- Track 32 : Galactic_20, Plumbus_21, Cheesepuff_22, Boomer_21, SuperGrey_21
- Track 33 : Modragons_20, Llama_20, Ochi17_20
- Track 34 : Alexphander_22, DaWorst_22
- Track 35 : Phatniss_21
- Track 36 : Mwanjiwa_20
- Track 37 : Eish_20
- Track 38 : DoRead_20
- Track 39 : Doug_21
- Track 40 : Ruby_20, DotProduct_20, MisterCuddles_20
- Track 41 : StAnnes_20
- Track 42 : LunaBlu_21, Seagreen_21, Doomphist_20, Poenanya_20, Tchotchke_21
- Track 43 : Enzomatic_22, SeaLumen_21
- Track 44 : IMpilo_20, Medindi_20
- Track 45 : Donkeykong_20
- Track 46 : NewHope4_22
- Track 47 : Mahavrat_20
- Track 48 : MilleniumForce_21
- Track 49 : OwlsT2W_22
- Track 50 : Hlubikazi_20, Mutaforma13_20, Brushbloom_21, Strokeseat_20, KristaRAM_21
- Track 51 : Dante_20
- Track 52 : WillSterrel_21, Rita_20, IrishSherpFalk_21
- Track 53 : Grimmer_21
- Track 54 : Mandlovu_20
- Track 55 : SassyB_20, PopTart_20
- Track 56 : Hades_20
- Track 57 : TootsiePop_21, Misha28_21
- Track 58 : Spikelee_21, Gonephishing_36, Stap_21, Ramsey_21
- Track 59 : Fancypants_20
- Track 60 : Eradicator_20
- Track 61 : Moonbeam_21, Taj_20, Hamulus_20, PhesterPhotato_20
- Track 62 : EmiMonkey_20
- Track 63 : Phalconet_20, DLane_20
- Track 64 : Byougenkin_20
- Track 65 : Frankie_21
- Track 66 : Violac_21
- Track 67 : Beakin_21
- Track 68 : Nitzel_21, Ardmore_20
- Track 69 : SiSi_20, Phasih_21, GUmbie_20, DirtMcgirt_21, Veteran_20, Leozinho_21, Mantra_20
- Track 70 : Jant_20
- Track 71 : Sabbb_21
- Track 72 : JalFarm20_22
- Track 73 : Job42_23
- Track 74 : Ovechkin_20
- Track 75 : Latretium_21
- Track 76 : RockyHorror_21, Zerg_20

- Track 77 : Whouxphf_20
- Track 78 : Mova_21, Aubs_20
- Track 79 : SimranZ1_21
- Track 80 : lbhubesi_20
- Track 81 : RedBird_20
- Track 82 : Mozy_21
- Track 83 : Oksu_21
- Track 84 : DocMcStuffins_21
- Track 85 : Nimbo_20
- Track 86 : Girr_20
- Track 87 : Topiatin_22
- Track 88 : Harley_20
- Track 89 : EleanorGeorge_20
- Track 90 : Spartacus_21
- Track 91 : DosHalletts_21
- Track 92 : Gandalph_20
- Track 93 : Tweety_21
- Track 94 : Bubbles123_21
- Track 95 : Deb65_20
- Track 96 : Bobi_22
- Track 97 : KingMidas_21
- Track 98 : Krakatau_21
- Track 99 : lbOuu_20
- Track 100 : Chuckly_20
- Track 101 : SilverChicken_26
- Track 102 : Toron_22
- Track 103 : Duke13_38, DaddyRickover_20
- Track 104 : Wanda_41
- Track 105 : Minerva_41
- Track 106 : Omega_40
- Track 107 : Optimus_39
- Track 108 : BAKA_38
- Track 109 : Gaia_23
- Track 110 : Nebkiss_24

Summary of Final Annotations (See graph section above for start numbers):

The start number called the most often in the published annotations is 5, it was called in 131 of the 213 non-draft genes in the pham.

Genes that call this "Most Annotated" start:

- Alexphander_22, Aloeri_21, AlpineSix_20, ArcusAngelus_20, Ardmore_20, Aubs_20, Awesomesauce_21, Beakin_21, Blexus_20, BlueCrab_20, BodEinwohner17_20, Boomer_21, Brushbloom_21, BuzzLyseyear_22, Byougenkin_20, CaptainTrips_21, Che8_21, CheesePuff_22, Chevrolet_20, ChickenDinner_21, Chuckly_20, Corium_20, Cornucopia_21, DRBy19_20, DaWorst_22, Daenerys_20, Dante_20, DeadP_20, DillTech15_20, DirtMcGirt_21, Dorothy_20, DotProduct_20, Doug_21, Drago_21, Eish_20, EleanorGeorge_20, Emmaloid_21, Empress_21, Enby_21, Enzomatic_22, Fancypants_20, Firehouse51_21, Flathead_21, Florinda_20, GUmbie_20, Galactic_20, Geralt_20,

Girafales_21, Grimmer_21, Hamulus_20, Harley_20, Hegedechwinu_21, Hlubikazi_20, IMpilo_20, Inventum_20, IrishSherpFalk_21, JalFarm20_22, Jinglebell_19, Job42_23, JoeyJr_20, Juice456_22, Juniper1_20, Karhdo_20, Kimberlium_22, KingJulian_20, KingMidas_21, KristaRAM_21, Latretium_21, Leozinho_21, LittleE_41, LittleShirley_21, Llij_20, Lorde_21, Mahavrat_20, Mandlovu_20, Mantra_20, Maravista_20, Marker_21, Medindi_20, MinionDave_21, MisterCuddles_20, Moonbeam_21, Mova_21, Mozy_21, MulchExplorer_22, Mutaforma13_20, Nimbo_20, Nitzel_21, OfUltron_20, Oksu_21, OldBen_20, PHappiness_20, PMC_20, Pacc40_20, PatoPoderoso_20, Peridot_22, Phasih_21, PhesterPhotato_20, Philus_20, PhilipPhlop_20, Piper2020_21, Plumbus_21, Polka14_21, Polo2Bam_22, PopTart_20, QuickMath_21, Quico_21, Radiance_20, Rialto_22, Rita_20, Rockne_20, RockyHorror_21, Ruby_20, SG4_20, Saal_20, Sassafras_20, SassyB_20, Scottish_21, SeaLumen_21, Seabastian_20, SiSi_20, SimranZ1_21, Slim_21, Sparkdehlily_20, StAnnes_20, Starcevich_21, Strokeseat_20, SuperGrey_21, SwagPigglett_20, TDanisky_20, Taj_20, Tootsieroll_21, Totinger_21, VRedHorse_20, Veteran_20, Vivum_20, Wachhund_20, Wanda_41, Wee_21, Whouxphf_20, WillSterrel_21, Zerg_20,

Genes that have the "Most Annotated" start but do not call it:

- BAKA_38, Bubbles123_21, Deb65_20, DocMcStuffins_21, Doomslug_22, EmiMonkey_20, Fastidio_20, Girr_20, Ibhubesi_20, Jant_20, Krakatau_21, Llama_20, Misha28_21, Modragons_20, Mwanjiwa_20, Nichirin_20, Ochi17_20, Omega_40, Phatniss_21, RedBird_20, TootsiePop_21, Topiatin_22,

Genes that do not have the "Most Annotated" start:

- Batiatus_20, Beanstalk_22, Blarby_28, BobaPhett_20, Bobi_22, Burwell21_20, ByChance_20, Cabrinians_20, DLane_20, DaddyRickover_20, DoRead_20, Donkeykong_20, Doomphist_20, DosHalletts_21, Duke13_38, Emma_20, Eradicator_20, Filuzino_20, Frankie_21, FreddyB_20, Fruitloop_20, Gaia_23, Gandalph_20, GigiOuiOui_20, Gonephishing_36, Gorge_20, Guppsters_21, Hades_20, IbOuu_20, James_20, Jarcob_20, Leperchaun_20, LilMoolah_20, Lizziana_20, Lucia_21, LunaBlu_21, Martik_20, Mattes_20, Melissauren88_20, MilleniumForce_21, Minerva_41, Minnie_21, Nebkiss_24, NewHope4_22, Nivrat_20, NormanBulbieJr_20, OlympiaSaint_20, Optimus_39, Ovechkin_20, OwlsT2W_22, Phalconet_20, Poenanya_20, Priscilla_20, Ramsey_21, RitaG_20, Royals2015_20, Sabbb_21, Sandalphon_21, Seagreen_21, ShiLan_20, ShowerHandel_20, SilverChicken_26, Spartacus_21, Spikelee_21, Spoonbill_20, Stap_21, Tchotchke_21, Toron_22, Tweety_21, Violac_21, Whatsapiecost_20, XFactor_20, Yorick_20, Zizzle_20,

Summary by start number:

Start 3:

- Found in 93 of 238 (39.1%) of genes in pham
- Manual Annotations of this start: 1 of 213
- Called 1.1% of time when present
- Phage (with cluster) where this start called: RedBird_20 (F1),

Start 4:

- Found in 232 of 238 (97.5%) of genes in pham
- Manual Annotations of this start: 3 of 213
- Called 1.3% of time when present

- Phage (with cluster) where this start called: BAKA_38 (J), Girr_20 (F1), Nebkiss_24 (X),

Start 5:

- Found in 164 of 238 (68.9%) of genes in pham
- Manual Annotations of this start: 131 of 213
- Called 86.6% of time when present
- Phage (with cluster) where this start called: Alexphander_22 (F1), Aloeri_21 (F1), AlpineSix_20 (F1), ArcusAngelus_20 (F1), Ardmore_20 (F1), Aubs_20 (F1), Awesomesauce_21 (F1), Beakin_21 (F1), Blexus_20 (F1), BlueCrab_20 (F1), BodEinwohner17_20 (F1), Boomer_21 (F1), Brushbloom_21 (F1), BuzzLyseyear_22 (F1), Byougenkin_20 (F1), CaptainTrips_21 (F1), Che8_21 (F1), Cheese puff_22 (F1), Chevrolet_20 (F1), ChickenDinner_21 (F1), Chuckly_20 (F1), Corium_20 (F1), Cornucopia_21 (F1), DRBy19_20 (F1), DaWorst_22 (F1), Daenerys_20 (F1), Dante_20 (F1), DeadP_20 (F1), DillTech15_20 (F1), DirtMcgirt_21 (F1), Dorothy_20 (F1), DotProduct_20 (F1), Doug_21 (F1), Drago_21 (F1), Eish_20 (F1), EleanorGeorge_20 (F1), Emmaloid_21 (F1), Empress_21 (F1), Enby_21 (F1), Enzomatic_22 (F1), Fancypants_20 (F1), Firehouse51_21 (F1), Flathead_21 (F1), Florinda_20 (F1), GUmbie_20 (F1), Galactic_20 (F1), Geralt_20 (F1), Girafales_21 (F1), Grimmer_21 (F1), Hamulus_20 (F1), Harley_20 (F1), Hegedechwinu_21 (F1), Hlubikazi_20 (F1), IMpilo_20 (F1), Inventum_20 (F1), IrishSherpFalk_21 (F1), JalFarm20_22 (F1), Jinglebell_19 (F1), Job42_23 (F1), JoeyJr_20 (F1), Juice456_22 (F1), Juniper1_20 (F1), Karhdo_20 (F1), Kimberlium_22 (F1), KingJulian_20 (F1), KingMidas_21 (F1), KristaRAM_21 (F1), Latretium_21 (F1), Leozinho_21 (F1), LittleE_41 (J), LittleShirley_21 (F1), Llij_20 (F1), Lorde_21 (F1), Mahavrat_20 (F1), Mandlovu_20 (F1), Mantra_20 (F1), Maravista_20 (F1), Marker_21 (F1), Medindi_20 (F1), MinionDave_21 (F1), MisterCuddles_20 (F1), Moonbeam_21 (F1), Mova_21 (F1), Mozy_21 (F1), MulchExplorer_22 (F1), Mutaforma13_20 (F1), Nimbo_20 (F1), Nitzel_21 (F1), OfUltron_20 (F1), Oksu_21 (F1), OldBen_20 (F1), PHappiness_20 (F1), PMC_20 (F1), Pacc40_20 (F1), PatoPoderoso_20 (F1), Peridot_22 (F1), Phasih_21 (F1), PhesterPhotato_20 (F1), Philus_20 (F1), PhilipPhlop_20 (F1), Piper2020_21 (F1), Plumbus_21 (F1), Polka14_21 (F1), Polo2Bam_22 (F1), PopTart_20 (F1), QuickMath_21 (F1), Quico_21 (F1), Radiance_20 (F1), Rialto_22 (F1), Rita_20 (F1), Rockne_20 (F1), RockyHorror_21 (F1), Ruby_20 (F1), SG4_20 (F1), Saal_20 (F1), Sassafras_20 (F1), SassyB_20 (F1), Scottish_21 (F1), SeaLumen_21 (F1), Seabastian_20 (F1), SiSi_20 (F1), SimranZ1_21 (F1), Slim_21 (F1), Sparkdehlily_20 (F1), StAnnes_20 (F1), Starcevich_21 (F1), Strokeseat_20 (F1), SuperGrey_21 (F1), SwagPigglett_20 (F1), TDanisky_20 (F1), Taj_20 (F1), Tootsieroll_21 (F1), Totinger_21 (F1), VRedHorse_20 (F1), Veteran_20 (F1), Vivum_20 (F1), Wachhund_20 (F1), Wanda_41 (J), Wee_21 (F1), Whouxphf_20 (F1), WillSterrel_21 (F1), Zerg_20 (F1),

Start 6:

- Found in 231 of 238 (97.1%) of genes in pham
- Manual Annotations of this start: 73 of 213
- Called 36.8% of time when present
- Phage (with cluster) where this start called: Batiatus_20 (F1), Beanstalk_22 (F1), BobaPhett_20 (F1), Bobi_22 (F1), Bubbles123_21 (F1), Burwell21_20 (F1), ByChance_20 (F1), Cabrinians_20 (F1), DLane_20 (F1), DaddyRickover_20 (F1), Deb65_20 (F1), DocMcStuffins_21 (F1), Donkeykong_20 (F1), Doomphist_20 (F1), Doomslug_22 (F), DosHalletts_21 (F1), Duke13_38 (J), EmiMonkey_20 (F1), Emma_20 (F1), Eradicator_20 (F1), Fastidio_20 (F1), Filuzino_20 (F1), FreddyB_20 (F1), Fruitloop_20 (F1), Gandalph_20 (F1), GigiOuiOui_20 (F1), Gonephishing_36 (J),

Gorge_20 (F1), Guppsters_21 (F1), Hades_20 (F1), IbOuu_20 (F1), Ibhubesi_20 (F1), James_20 (F1), Jant_20 (F1), Jarcob_20 (F1), Krakatau_21 (F1), Leperchaun_20 (F1), LilMoolah_20 (F1), Lizziana_20 (F1), Llama_20 (F1), Lucia_21 (F1), LunaBlu_21 (F1), Martik_20 (F1), Mattes_20 (F1), Melissauren88_20 (F1), MilleniumForce_21 (F1), Minerva_41 (J), Minnie_21 (F1), Misha28_21 (F1), Modragons_20 (F1), Mwanjiwa_20 (F1), Nichirin_20 (F1), Nivrat_20 (F1), NormanBulbieJr_20 (F1), Ochi17_20 (F1), OlympiaSaint_20 (F1), Omega_40 (J), Optimus_39 (J), Ovechkin_20 (F1), OwlsT2W_22 (F1), Phalconet_20 (F1), Phatniss_21 (F1), Poenanya_20 (F1), Priscilla_20 (F1), Ramsey_21 (F1), RitaG_20 (F1), Royals2015_20 (F1), Sabbb_21 (F1), Sandalphon_21 (F1), Seagreen_21 (F1), ShiLan_20 (F1), ShowerHandel_20 (F1), Spartacus_21 (F1), Spikelee_21 (F1), Spoonbill_20 (F1), Stap_21 (F1), Tchotchke_21 (F1), TootsiePop_21 (F1), Topiatin_22 (F1), Toron_22 (F6), Violac_21 (F1), Whatsapiecost_20 (F1), XFactor_20 (F1), Yorick_20 (F1), Zizzle_20 (F1),

Start 7:

- Found in 4 of 238 (1.7%) of genes in pham
- Manual Annotations of this start: 2 of 213
- Called 75.0% of time when present
- Phage (with cluster) where this start called: DoRead_20 (F1), Gaia_23 (X), SilverChicken_26 (F2),

Start 8:

- Found in 1 of 238 (0.4%) of genes in pham
- Manual Annotations of this start: 1 of 213
- Called 100.0% of time when present
- Phage (with cluster) where this start called: Frankie_21 (F1),

Start 34:

- Found in 200 of 238 (84.0%) of genes in pham
- Manual Annotations of this start: 1 of 213
- Called 0.5% of time when present
- Phage (with cluster) where this start called: Tweety_21 (F1),

Start 36:

- Found in 169 of 238 (71.0%) of genes in pham
- Manual Annotations of this start: 1 of 213
- Called 0.6% of time when present
- Phage (with cluster) where this start called: NewHope4_22 (F1),

Start 48:

- Found in 219 of 238 (92.0%) of genes in pham
- No Manual Annotations of this start.
- Called 0.5% of time when present
- Phage (with cluster) where this start called: Blarby_28 (F),

Summary by clusters:

There are 6 clusters represented in this pham: F1, F2, F6, F, J, X,

Info for manual annotations of cluster F1:

- Start number 3 was manually annotated 1 time for cluster F1.

- Start number 4 was manually annotated 1 time for cluster F1.
- Start number 5 was manually annotated 129 times for cluster F1.
- Start number 6 was manually annotated 69 times for cluster F1.
- Start number 7 was manually annotated 1 time for cluster F1.
- Start number 8 was manually annotated 1 time for cluster F1.
- Start number 34 was manually annotated 1 time for cluster F1.
- Start number 36 was manually annotated 1 time for cluster F1.

Info for manual annotations of cluster J:

- Start number 4 was manually annotated 1 time for cluster J.
- Start number 5 was manually annotated 2 times for cluster J.
- Start number 6 was manually annotated 4 times for cluster J.

Info for manual annotations of cluster X:

- Start number 4 was manually annotated 1 time for cluster X.
- Start number 7 was manually annotated 1 time for cluster X.

Gene Information:

Gene: Alexphander_22 Start: 22340, Stop: 23506, Start Num: 5

Candidate Starts for Alexphander_22:

(Start: 4 @22304 has 3 MA's), (Start: 5 @22340 has 131 MA's), (Start: 6 @22346 has 73 MA's), (11, 22406), (18, 22469), (19, 22478), (21, 22505), (23, 22511), (25, 22529), (28, 22568), (31, 22589), (Start: 34 @22616 has 1 MA's), (35, 22634), (Start: 36 @22646 has 1 MA's), (39, 22691), (48, 22775), (53, 22835), (58, 22877), (60, 22895), (64, 22928), (67, 22949), (77, 23015), (89, 23075), (98, 23132), (104, 23171), (112, 23204), (138, 23342), (155, 23480),

Gene: Aloeri_21 Start: 21670, Stop: 22848, Start Num: 5

Candidate Starts for Aloeri_21:

(Start: 4 @21634 has 3 MA's), (Start: 5 @21670 has 131 MA's), (Start: 6 @21676 has 73 MA's), (11, 21736), (18, 21799), (20, 21823), (21, 21835), (23, 21841), (25, 21859), (28, 21898), (31, 21919), (Start: 34 @21946 has 1 MA's), (38, 21982), (39, 22021), (41, 22039), (43, 22057), (46, 22087), (47, 22099), (53, 22165), (60, 22225), (62, 22249), (64, 22258), (72, 22294), (75, 22339), (77, 22345), (78, 22348), (88, 22402), (89, 22408), (93, 22426), (98, 22465), (106, 22510), (107, 22513), (115, 22552), (118, 22576), (120, 22585), (122, 22594), (134, 22654), (135, 22660), (156, 22828),

Gene: AlpineSix_20 Start: 22045, Stop: 23220, Start Num: 5

Candidate Starts for AlpineSix_20:

(Start: 4 @22009 has 3 MA's), (Start: 5 @22045 has 131 MA's), (Start: 6 @22051 has 73 MA's), (11, 22111), (18, 22174), (19, 22183), (20, 22198), (21, 22210), (23, 22216), (24, 22228), (25, 22234), (28, 22273), (31, 22294), (33, 22315), (Start: 34 @22321 has 1 MA's), (35, 22339), (Start: 36 @22351 has 1 MA's), (39, 22396), (40, 22405), (44, 22441), (46, 22462), (48, 22480), (53, 22540), (60, 22600), (64, 22633), (77, 22720), (78, 22723), (79, 22726), (89, 22780), (97, 22831), (103, 22873), (107, 22885), (113, 22912), (115, 22924), (120, 22957), (127, 23005), (133, 23023), (148, 23122),

Gene: ArcusAngelus_20 Start: 21855, Stop: 23021, Start Num: 5

Candidate Starts for ArcusAngelus_20:

(1, 21369), (2, 21537), (Start: 3 @21759 has 1 MA's), (Start: 4 @21819 has 3 MA's), (Start: 5 @21855 has 131 MA's), (Start: 6 @21861 has 73 MA's), (11, 21921), (18, 21984), (19, 21993), (21, 22020), (23,

22026), (25, 22044), (27, 22080), (28, 22083), (31, 22104), (Start: 34 @22131 has 1 MA's), (35, 22149), (Start: 36 @22161 has 1 MA's), (39, 22206), (48, 22290), (53, 22350), (58, 22392), (60, 22410), (64, 22443), (67, 22464), (77, 22530), (89, 22590), (98, 22647), (104, 22686), (112, 22719), (120, 22767), (138, 22857), (155, 22995),

Gene: Ardmore_20 Start: 21858, Stop: 23024, Start Num: 5

Candidate Starts for Ardmore_20:

(Start: 4 @21822 has 3 MA's), (Start: 5 @21858 has 131 MA's), (Start: 6 @21864 has 73 MA's), (11, 21924), (18, 21987), (20, 22011), (21, 22023), (23, 22029), (25, 22047), (28, 22086), (31, 22107), (Start: 34 @22134 has 1 MA's), (35, 22152), (Start: 36 @22164 has 1 MA's), (39, 22209), (44, 22254), (48, 22293), (53, 22353), (60, 22413), (61, 22422), (64, 22446), (68, 22470), (76, 22530), (80, 22539), (82, 22542), (85, 22566), (86, 22569), (88, 22590), (89, 22596), (97, 22647), (98, 22653), (115, 22737), (124, 22800), (131, 22833), (133, 22836), (134, 22839), (137, 22854), (148, 22926), (149, 22932),

Gene: Aubs_20 Start: 21974, Stop: 23140, Start Num: 5

Candidate Starts for Aubs_20:

(1, 21488), (Start: 3 @21878 has 1 MA's), (Start: 4 @21938 has 3 MA's), (Start: 5 @21974 has 131 MA's), (Start: 6 @21980 has 73 MA's), (11, 22040), (18, 22103), (19, 22112), (21, 22139), (23, 22145), (25, 22163), (28, 22202), (31, 22223), (Start: 34 @22250 has 1 MA's), (35, 22268), (Start: 36 @22280 has 1 MA's), (39, 22325), (48, 22409), (53, 22469), (58, 22511), (60, 22529), (61, 22538), (64, 22562), (67, 22583), (77, 22649), (89, 22709), (98, 22766), (104, 22805), (112, 22838), (120, 22886), (155, 23114),

Gene: Awesomesauce_21 Start: 21667, Stop: 22845, Start Num: 5

Candidate Starts for Awesomesauce_21:

(Start: 4 @21631 has 3 MA's), (Start: 5 @21667 has 131 MA's), (Start: 6 @21673 has 73 MA's), (11, 21733), (18, 21796), (20, 21820), (21, 21832), (23, 21838), (25, 21856), (28, 21895), (31, 21916), (Start: 34 @21943 has 1 MA's), (38, 21979), (39, 22018), (41, 22036), (43, 22054), (46, 22084), (47, 22096), (53, 22162), (60, 22222), (62, 22246), (64, 22255), (72, 22291), (75, 22336), (77, 22342), (78, 22345), (88, 22399), (89, 22405), (93, 22423), (98, 22462), (106, 22507), (107, 22510), (115, 22549), (118, 22573), (120, 22582), (122, 22591), (134, 22651), (135, 22657),

Gene: BAKA_38 Start: 34291, Stop: 35493, Start Num: 4

Candidate Starts for BAKA_38:

(Start: 3 @34231 has 1 MA's), (Start: 4 @34291 has 3 MA's), (Start: 5 @34327 has 131 MA's), (Start: 6 @34333 has 73 MA's), (11, 34393), (18, 34456), (19, 34465), (21, 34492), (23, 34498), (25, 34516), (28, 34555), (31, 34576), (Start: 34 @34603 has 1 MA's), (35, 34621), (Start: 36 @34633 has 1 MA's), (39, 34678), (48, 34762), (53, 34822), (58, 34864), (60, 34882), (64, 34915), (67, 34936), (77, 35002), (89, 35062), (98, 35119), (112, 35191), (120, 35239), (155, 35467),

Gene: Batiatus_20 Start: 21871, Stop: 23031, Start Num: 6

Candidate Starts for Batiatus_20:

(Start: 3 @21769 has 1 MA's), (Start: 4 @21829 has 3 MA's), (Start: 6 @21871 has 73 MA's), (11, 21931), (18, 21994), (19, 22003), (21, 22030), (23, 22036), (25, 22054), (28, 22093), (Start: 34 @22141 has 1 MA's), (35, 22159), (Start: 36 @22171 has 1 MA's), (39, 22216), (48, 22300), (53, 22360), (58, 22402), (60, 22420), (61, 22429), (64, 22453), (67, 22474), (77, 22540), (89, 22600), (98, 22657), (104, 22696), (112, 22729), (120, 22777), (155, 23005),

Gene: Beakin_21 Start: 21666, Stop: 22832, Start Num: 5

Candidate Starts for Beakin_21:

(Start: 4 @21630 has 3 MA's), (Start: 5 @21666 has 131 MA's), (Start: 6 @21672 has 73 MA's), (11, 21732), (18, 21795), (19, 21804), (21, 21831), (23, 21837), (25, 21855), (28, 21894), (31, 21915), (32, 21927), (Start: 34 @21942 has 1 MA's), (35, 21960), (Start: 36 @21972 has 1 MA's), (39, 22017), (48,

22101), (53, 22161), (57, 22200), (58, 22203), (60, 22221), (61, 22230), (64, 22254), (67, 22275), (77, 22341), (89, 22401), (98, 22458), (104, 22497), (112, 22530), (120, 22578), (138, 22668), (155, 22806),

Gene: Beanstalk_22 Start: 21823, Stop: 22983, Start Num: 6

Candidate Starts for Beanstalk_22:

(Start: 3 @21721 has 1 MA's), (Start: 4 @21781 has 3 MA's), (Start: 6 @21823 has 73 MA's), (11, 21883), (18, 21946), (19, 21955), (21, 21982), (23, 21988), (25, 22006), (28, 22045), (Start: 34 @22093 has 1 MA's), (35, 22111), (Start: 36 @22123 has 1 MA's), (39, 22168), (48, 22252), (53, 22312), (58, 22354), (60, 22372), (61, 22381), (64, 22405), (67, 22426), (77, 22492), (89, 22552), (98, 22609), (104, 22648), (112, 22681), (120, 22729), (155, 22957),

Gene: Blarby_28 Start: 22525, Stop: 23256, Start Num: 48

Candidate Starts for Blarby_28:

(Start: 4 @22054 has 3 MA's), (Start: 6 @22096 has 73 MA's), (11, 22156), (18, 22219), (19, 22228), (21, 22255), (23, 22261), (25, 22279), (28, 22318), (31, 22339), (Start: 34 @22366 has 1 MA's), (35, 22384), (Start: 36 @22396 has 1 MA's), (39, 22441), (48, 22525), (53, 22585), (58, 22627), (60, 22645), (61, 22654), (64, 22678), (67, 22699), (77, 22765), (89, 22825), (98, 22882), (104, 22921), (112, 22954), (120, 23002), (138, 23092), (155, 23230),

Gene: Blexus_20 Start: 22003, Stop: 23169, Start Num: 5

Candidate Starts for Blexus_20:

(Start: 3 @21907 has 1 MA's), (Start: 4 @21967 has 3 MA's), (Start: 5 @22003 has 131 MA's), (Start: 6 @22009 has 73 MA's), (11, 22069), (18, 22132), (19, 22141), (21, 22168), (23, 22174), (25, 22192), (28, 22231), (31, 22252), (Start: 34 @22279 has 1 MA's), (35, 22297), (Start: 36 @22309 has 1 MA's), (39, 22354), (48, 22438), (53, 22498), (58, 22540), (60, 22558), (61, 22567), (64, 22591), (67, 22612), (77, 22678), (89, 22738), (98, 22795), (104, 22834), (112, 22867), (120, 22915), (138, 23005), (155, 23143),

Gene: BlueCrab_20 Start: 21988, Stop: 23151, Start Num: 5

Candidate Starts for BlueCrab_20:

(Start: 4 @21952 has 3 MA's), (Start: 5 @21988 has 131 MA's), (Start: 6 @21994 has 73 MA's), (11, 22054), (14, 22093), (17, 22111), (18, 22117), (19, 22126), (20, 22141), (23, 22159), (25, 22177), (31, 22237), (Start: 34 @22264 has 1 MA's), (35, 22282), (Start: 36 @22294 has 1 MA's), (39, 22339), (41, 22357), (48, 22423), (53, 22483), (60, 22543), (62, 22567), (63, 22570), (87, 22705), (89, 22726), (90, 22732), (91, 22735), (98, 22783), (100, 22792), (105, 22825), (112, 22852), (117, 22882), (131, 22966), (148, 23068), (152, 23101), (155, 23134),

Gene: BobaPhett_20 Start: 21808, Stop: 23010, Start Num: 6

Candidate Starts for BobaPhett_20:

(Start: 4 @21766 has 3 MA's), (Start: 6 @21808 has 73 MA's), (9, 21847), (18, 21928), (19, 21937), (21, 21964), (22, 21967), (24, 21982), (25, 21988), (27, 22024), (29, 22030), (31, 22048), (39, 22150), (43, 22189), (45, 22213), (47, 22231), (48, 22237), (50, 22264), (51, 22273), (53, 22297), (54, 22306), (56, 22333), (59, 22351), (60, 22357), (64, 22390), (69, 22420), (70, 22423), (77, 22495), (79, 22501), (89, 22558), (91, 22567), (98, 22615), (110, 22681), (114, 22699), (126, 22774), (134, 22807), (143, 22867), (145, 22897), (148, 22912), (149, 22918), (151, 22945),

Gene: Bobi_22 Start: 22410, Stop: 23570, Start Num: 6

Candidate Starts for Bobi_22:

(1, 21918), (Start: 3 @22308 has 1 MA's), (Start: 4 @22368 has 3 MA's), (Start: 6 @22410 has 73 MA's), (11, 22470), (18, 22533), (19, 22542), (21, 22569), (23, 22575), (25, 22593), (28, 22632), (31, 22653), (Start: 34 @22680 has 1 MA's), (35, 22698), (Start: 36 @22710 has 1 MA's), (39, 22755), (48, 22839), (53, 22899), (57, 22938), (58, 22941), (60, 22959), (61, 22968), (64, 22992), (67, 23013), (77,

23079), (89, 23139), (98, 23196), (104, 23235), (112, 23268), (120, 23316), (138, 23406), (155, 23544),

Gene: BodEinwohner17_20 Start: 21986, Stop: 23152, Start Num: 5

Candidate Starts for BodEinwohner17_20:

(Start: 3 @21890 has 1 MA's), (Start: 4 @21950 has 3 MA's), (Start: 5 @21986 has 131 MA's), (Start: 6 @21992 has 73 MA's), (11, 22052), (18, 22115), (19, 22124), (21, 22151), (23, 22157), (25, 22175), (28, 22214), (31, 22235), (Start: 34 @22262 has 1 MA's), (35, 22280), (Start: 36 @22292 has 1 MA's), (39, 22337), (48, 22421), (53, 22481), (58, 22523), (60, 22541), (61, 22550), (64, 22574), (67, 22595), (77, 22661), (89, 22721), (98, 22778), (104, 22817), (112, 22850), (120, 22898), (138, 22988), (155, 23126),

Gene: Boomer_21 Start: 21629, Stop: 22795, Start Num: 5

Candidate Starts for Boomer_21:

(Start: 4 @21593 has 3 MA's), (Start: 5 @21629 has 131 MA's), (Start: 6 @21635 has 73 MA's), (11, 21695), (18, 21758), (19, 21767), (21, 21794), (23, 21800), (25, 21818), (28, 21857), (31, 21878), (Start: 34 @21905 has 1 MA's), (35, 21923), (Start: 36 @21935 has 1 MA's), (39, 21980), (48, 22064), (53, 22124), (58, 22166), (60, 22184), (61, 22193), (64, 22217), (67, 22238), (77, 22304), (89, 22364), (98, 22421), (104, 22460), (112, 22493), (120, 22541), (138, 22631), (155, 22769),

Gene: Brushbloom_21 Start: 21698, Stop: 22864, Start Num: 5

Candidate Starts for Brushbloom_21:

(1, 21212), (Start: 3 @21602 has 1 MA's), (Start: 4 @21662 has 3 MA's), (Start: 5 @21698 has 131 MA's), (Start: 6 @21704 has 73 MA's), (11, 21764), (18, 21827), (19, 21836), (21, 21863), (23, 21869), (25, 21887), (28, 21926), (31, 21947), (Start: 34 @21974 has 1 MA's), (35, 21992), (Start: 36 @22004 has 1 MA's), (39, 22049), (48, 22133), (53, 22193), (58, 22235), (60, 22253), (61, 22262), (64, 22286), (67, 22307), (77, 22373), (89, 22433), (98, 22490), (104, 22529), (112, 22562), (120, 22610), (138, 22700), (155, 22838),

Gene: Bubbles123_21 Start: 22535, Stop: 23695, Start Num: 6

Candidate Starts for Bubbles123_21:

(Start: 3 @22433 has 1 MA's), (Start: 4 @22493 has 3 MA's), (Start: 5 @22529 has 131 MA's), (Start: 6 @22535 has 73 MA's), (11, 22595), (18, 22658), (19, 22667), (21, 22694), (23, 22700), (25, 22718), (27, 22754), (28, 22757), (31, 22778), (Start: 34 @22805 has 1 MA's), (35, 22823), (Start: 36 @22835 has 1 MA's), (39, 22880), (48, 22964), (53, 23024), (58, 23066), (60, 23084), (64, 23117), (67, 23138), (77, 23204), (89, 23264), (98, 23321), (104, 23360), (112, 23393), (120, 23441), (138, 23531), (145, 23588), (155, 23669),

Gene: Burwell21_20 Start: 21842, Stop: 23044, Start Num: 6

Candidate Starts for Burwell21_20:

(Start: 4 @21800 has 3 MA's), (Start: 6 @21842 has 73 MA's), (9, 21881), (14, 21938), (18, 21962), (19, 21971), (21, 21998), (22, 22001), (24, 22016), (25, 22022), (27, 22058), (29, 22064), (31, 22082), (39, 22184), (43, 22223), (45, 22247), (47, 22265), (48, 22271), (50, 22298), (51, 22307), (53, 22331), (54, 22340), (56, 22367), (59, 22385), (60, 22391), (64, 22424), (69, 22454), (70, 22457), (77, 22529), (79, 22535), (89, 22592), (91, 22601), (98, 22649), (110, 22715), (114, 22733), (126, 22808), (134, 22841), (143, 22901), (145, 22931), (148, 22946), (149, 22952), (151, 22979),

Gene: BuzzLyseyear_22 Start: 22208, Stop: 23374, Start Num: 5

Candidate Starts for BuzzLyseyear_22:

(Start: 3 @22112 has 1 MA's), (Start: 4 @22172 has 3 MA's), (Start: 5 @22208 has 131 MA's), (Start: 6 @22214 has 73 MA's), (11, 22274), (18, 22337), (19, 22346), (21, 22373), (23, 22379), (25, 22397), (28, 22436), (Start: 34 @22484 has 1 MA's), (35, 22502), (Start: 36 @22514 has 1 MA's), (39, 22559), (48, 22643), (53, 22703), (57, 22742), (58, 22745), (60, 22763), (61, 22772), (64, 22796), (67, 22817),

(77, 22883), (89, 22943), (98, 23000), (104, 23039), (112, 23072), (120, 23120), (138, 23210), (155, 23348),

Gene: ByChance_20 Start: 21819, Stop: 23021, Start Num: 6

Candidate Starts for ByChance_20:

(Start: 4 @21777 has 3 MA's), (Start: 6 @21819 has 73 MA's), (9, 21858), (18, 21939), (19, 21948), (21, 21975), (22, 21978), (24, 21993), (25, 21999), (27, 22035), (29, 22041), (31, 22059), (39, 22161), (43, 22200), (45, 22224), (47, 22242), (48, 22248), (50, 22275), (51, 22284), (53, 22308), (54, 22317), (56, 22344), (59, 22362), (60, 22368), (64, 22401), (69, 22431), (70, 22434), (77, 22506), (79, 22512), (89, 22569), (91, 22578), (97, 22620), (98, 22626), (110, 22692), (114, 22710), (126, 22785), (134, 22818), (143, 22878), (145, 22908), (148, 22923), (149, 22929), (151, 22956),

Gene: Byougenkin_20 Start: 21829, Stop: 22995, Start Num: 5

Candidate Starts for Byougenkin_20:

(Start: 3 @21733 has 1 MA's), (Start: 4 @21793 has 3 MA's), (Start: 5 @21829 has 131 MA's), (Start: 6 @21835 has 73 MA's), (11, 21895), (17, 21952), (18, 21958), (19, 21967), (21, 21994), (23, 22000), (25, 22018), (28, 22057), (31, 22078), (Start: 34 @22105 has 1 MA's), (35, 22123), (Start: 36 @22135 has 1 MA's), (39, 22180), (48, 22264), (53, 22324), (58, 22366), (60, 22384), (61, 22393), (64, 22417), (67, 22438), (77, 22504), (89, 22564), (104, 22660), (112, 22693), (120, 22741), (155, 22969),

Gene: Cabrinians_20 Start: 21836, Stop: 23038, Start Num: 6

Candidate Starts for Cabrinians_20:

(Start: 4 @21794 has 3 MA's), (Start: 6 @21836 has 73 MA's), (9, 21875), (14, 21932), (18, 21956), (19, 21965), (21, 21992), (22, 21995), (24, 22010), (25, 22016), (27, 22052), (29, 22058), (31, 22076), (39, 22178), (43, 22217), (45, 22241), (47, 22259), (48, 22265), (50, 22292), (51, 22301), (53, 22325), (54, 22334), (56, 22361), (59, 22379), (60, 22385), (64, 22418), (69, 22448), (70, 22451), (77, 22523), (79, 22529), (89, 22586), (91, 22595), (98, 22643), (110, 22709), (114, 22727), (126, 22802), (134, 22835), (143, 22895), (145, 22925), (148, 22940), (149, 22946), (151, 22973),

Gene: CaptainTrips_21 Start: 22509, Stop: 23675, Start Num: 5

Candidate Starts for CaptainTrips_21:

(Start: 3 @22413 has 1 MA's), (Start: 4 @22473 has 3 MA's), (Start: 5 @22509 has 131 MA's), (Start: 6 @22515 has 73 MA's), (11, 22575), (18, 22638), (19, 22647), (21, 22674), (23, 22680), (25, 22698), (28, 22737), (31, 22758), (Start: 34 @22785 has 1 MA's), (35, 22803), (Start: 36 @22815 has 1 MA's), (39, 22860), (48, 22944), (53, 23004), (58, 23046), (60, 23064), (61, 23073), (64, 23097), (67, 23118), (77, 23184), (89, 23244), (98, 23301), (104, 23340), (112, 23373), (120, 23421), (138, 23511), (155, 23649),

Gene: Che8_21 Start: 21843, Stop: 23009, Start Num: 5

Candidate Starts for Che8_21:

(Start: 4 @21807 has 3 MA's), (Start: 5 @21843 has 131 MA's), (Start: 6 @21849 has 73 MA's), (11, 21909), (17, 21966), (18, 21972), (19, 21981), (20, 21996), (21, 22008), (23, 22014), (25, 22032), (28, 22071), (31, 22092), (Start: 34 @22119 has 1 MA's), (35, 22137), (Start: 36 @22149 has 1 MA's), (39, 22194), (44, 22239), (48, 22278), (53, 22338), (60, 22398), (67, 22452), (77, 22518), (89, 22578), (98, 22635), (104, 22674), (112, 22707), (120, 22755), (125, 22791), (138, 22845), (145, 22902), (155, 22983),

Gene: Cheesepuff_22 Start: 22665, Stop: 23831, Start Num: 5

Candidate Starts for Cheesepuff_22:

(Start: 4 @22629 has 3 MA's), (Start: 5 @22665 has 131 MA's), (Start: 6 @22671 has 73 MA's), (11, 22731), (18, 22794), (19, 22803), (21, 22830), (23, 22836), (25, 22854), (28, 22893), (31, 22914), (Start: 34 @22941 has 1 MA's), (35, 22959), (Start: 36 @22971 has 1 MA's), (39, 23016), (48, 23100), (53, 23160), (58, 23202), (60, 23220), (61, 23229), (64, 23253), (67, 23274), (77, 23340), (89, 23400),

(98, 23457), (104, 23496), (112, 23529), (120, 23577), (138, 23667), (155, 23805),

Gene: Chevrolet_20 Start: 21855, Stop: 23021, Start Num: 5

Candidate Starts for Chevrolet_20:

(1, 21369), (2, 21537), (Start: 3 @21759 has 1 MA's), (Start: 4 @21819 has 3 MA's), (Start: 5 @21855 has 131 MA's), (Start: 6 @21861 has 73 MA's), (11, 21921), (18, 21984), (19, 21993), (21, 22020), (23, 22026), (25, 22044), (27, 22080), (28, 22083), (31, 22104), (Start: 34 @22131 has 1 MA's), (35, 22149), (Start: 36 @22161 has 1 MA's), (39, 22206), (48, 22290), (53, 22350), (58, 22392), (60, 22410), (64, 22443), (67, 22464), (77, 22530), (89, 22590), (98, 22647), (104, 22686), (112, 22719), (120, 22767), (138, 22857), (155, 22995),

Gene: ChickenDinner_21 Start: 21670, Stop: 22848, Start Num: 5

Candidate Starts for ChickenDinner_21:

(Start: 4 @21634 has 3 MA's), (Start: 5 @21670 has 131 MA's), (Start: 6 @21676 has 73 MA's), (11, 21736), (18, 21799), (20, 21823), (21, 21835), (23, 21841), (25, 21859), (28, 21898), (31, 21919), (Start: 34 @21946 has 1 MA's), (38, 21982), (39, 22021), (41, 22039), (43, 22057), (46, 22087), (47, 22099), (53, 22165), (60, 22225), (62, 22249), (64, 22258), (72, 22294), (75, 22339), (77, 22345), (78, 22348), (88, 22402), (89, 22408), (93, 22426), (98, 22465), (106, 22510), (107, 22513), (115, 22552), (118, 22576), (120, 22585), (122, 22594), (134, 22654), (135, 22660), (156, 22828),

Gene: Chuckly_20 Start: 21980, Stop: 23146, Start Num: 5

Candidate Starts for Chuckly_20:

(Start: 4 @21944 has 3 MA's), (Start: 5 @21980 has 131 MA's), (Start: 6 @21986 has 73 MA's), (11, 22046), (18, 22109), (20, 22133), (21, 22145), (23, 22151), (25, 22169), (28, 22208), (31, 22229), (Start: 34 @22256 has 1 MA's), (35, 22274), (Start: 36 @22286 has 1 MA's), (39, 22331), (48, 22415), (53, 22475), (60, 22535), (61, 22544), (64, 22568), (68, 22592), (76, 22652), (80, 22661), (82, 22664), (85, 22688), (86, 22691), (88, 22712), (89, 22718), (97, 22769), (115, 22859), (124, 22922), (131, 22955), (133, 22958), (134, 22961), (137, 22976), (148, 23048),

Gene: Corium_20 Start: 21854, Stop: 23020, Start Num: 5

Candidate Starts for Corium_20:

(Start: 3 @21758 has 1 MA's), (Start: 4 @21818 has 3 MA's), (Start: 5 @21854 has 131 MA's), (Start: 6 @21860 has 73 MA's), (11, 21920), (18, 21983), (19, 21992), (21, 22019), (23, 22025), (25, 22043), (28, 22082), (31, 22103), (Start: 34 @22130 has 1 MA's), (35, 22148), (Start: 36 @22160 has 1 MA's), (39, 22205), (48, 22289), (53, 22349), (58, 22391), (60, 22409), (61, 22418), (64, 22442), (67, 22463), (77, 22529), (89, 22589), (98, 22646), (104, 22685), (112, 22718), (120, 22766), (138, 22856), (155, 22994),

Gene: Cornucopia_21 Start: 21852, Stop: 23018, Start Num: 5

Candidate Starts for Cornucopia_21:

(Start: 3 @21756 has 1 MA's), (Start: 4 @21816 has 3 MA's), (Start: 5 @21852 has 131 MA's), (Start: 6 @21858 has 73 MA's), (11, 21918), (18, 21981), (19, 21990), (21, 22017), (23, 22023), (25, 22041), (28, 22080), (31, 22101), (Start: 34 @22128 has 1 MA's), (35, 22146), (Start: 36 @22158 has 1 MA's), (39, 22203), (48, 22287), (53, 22347), (58, 22389), (60, 22407), (61, 22416), (64, 22440), (67, 22461), (77, 22527), (89, 22587), (98, 22644), (104, 22683), (112, 22716), (120, 22764), (138, 22854), (155, 22992),

Gene: DLane_20 Start: 21809, Stop: 22969, Start Num: 6

Candidate Starts for DLane_20:

(1, 21317), (Start: 3 @21707 has 1 MA's), (Start: 4 @21767 has 3 MA's), (Start: 6 @21809 has 73 MA's), (11, 21869), (18, 21932), (19, 21941), (21, 21968), (23, 21974), (25, 21992), (28, 22031), (31, 22052), (Start: 34 @22079 has 1 MA's), (35, 22097), (Start: 36 @22109 has 1 MA's), (39, 22154), (48, 22238), (53, 22298), (58, 22340), (60, 22358), (61, 22367), (64, 22391), (67, 22412), (77, 22478), (89,

22538), (98, 22595), (104, 22634), (112, 22667), (120, 22715), (138, 22805), (145, 22862), (155, 22943),

Gene: DRBy19_20 Start: 21846, Stop: 23009, Start Num: 5

Candidate Starts for DRBy19_20:

(Start: 4 @21810 has 3 MA's), (Start: 5 @21846 has 131 MA's), (Start: 6 @21852 has 73 MA's), (11, 21912), (17, 21969), (18, 21975), (20, 21999), (23, 22017), (25, 22035), (28, 22074), (31, 22095), (Start: 34 @22122 has 1 MA's), (35, 22140), (38, 22158), (39, 22197), (48, 22281), (53, 22341), (60, 22401), (62, 22425), (63, 22428), (87, 22563), (89, 22584), (91, 22593), (98, 22641), (105, 22683), (112, 22710), (117, 22740), (131, 22824), (148, 22926), (152, 22959), (155, 22992),

Gene: DaWorst_22 Start: 22347, Stop: 23513, Start Num: 5

Candidate Starts for DaWorst_22:

(Start: 4 @22311 has 3 MA's), (Start: 5 @22347 has 131 MA's), (Start: 6 @22353 has 73 MA's), (11, 22413), (18, 22476), (19, 22485), (21, 22512), (23, 22518), (25, 22536), (28, 22575), (31, 22596), (Start: 34 @22623 has 1 MA's), (35, 22641), (Start: 36 @22653 has 1 MA's), (39, 22698), (48, 22782), (53, 22842), (58, 22884), (60, 22902), (64, 22935), (67, 22956), (77, 23022), (89, 23082), (98, 23139), (104, 23178), (112, 23211), (138, 23349), (155, 23487),

Gene: DaddyRickover_20 Start: 21991, Stop: 23151, Start Num: 6

Candidate Starts for DaddyRickover_20:

(Start: 3 @21889 has 1 MA's), (Start: 4 @21949 has 3 MA's), (Start: 6 @21991 has 73 MA's), (11, 22051), (18, 22114), (19, 22123), (21, 22150), (23, 22156), (25, 22174), (28, 22213), (31, 22234), (Start: 34 @22261 has 1 MA's), (35, 22279), (Start: 36 @22291 has 1 MA's), (39, 22336), (48, 22420), (53, 22480), (58, 22522), (60, 22540), (64, 22573), (67, 22594), (77, 22660), (89, 22720), (98, 22777), (112, 22849), (120, 22897), (155, 23125),

Gene: Daenerys_20 Start: 21820, Stop: 22983, Start Num: 5

Candidate Starts for Daenerys_20:

(Start: 4 @21784 has 3 MA's), (Start: 5 @21820 has 131 MA's), (Start: 6 @21826 has 73 MA's), (11, 21886), (14, 21925), (17, 21943), (18, 21949), (19, 21958), (20, 21973), (23, 21991), (25, 22009), (31, 22069), (Start: 34 @22096 has 1 MA's), (35, 22114), (Start: 36 @22126 has 1 MA's), (39, 22171), (41, 22189), (48, 22255), (53, 22315), (60, 22375), (62, 22399), (63, 22402), (87, 22537), (89, 22558), (90, 22564), (91, 22567), (98, 22615), (100, 22624), (105, 22657), (112, 22684), (117, 22714), (131, 22798), (148, 22900), (152, 22933), (155, 22966),

Gene: Dante_20 Start: 21833, Stop: 22999, Start Num: 5

Candidate Starts for Dante_20:

(Start: 3 @21737 has 1 MA's), (Start: 4 @21797 has 3 MA's), (Start: 5 @21833 has 131 MA's), (Start: 6 @21839 has 73 MA's), (11, 21899), (18, 21962), (19, 21971), (21, 21998), (23, 22004), (25, 22022), (28, 22061), (31, 22082), (Start: 34 @22109 has 1 MA's), (35, 22127), (Start: 36 @22139 has 1 MA's), (39, 22184), (48, 22268), (53, 22328), (60, 22388), (61, 22397), (64, 22421), (67, 22442), (77, 22508), (89, 22568), (98, 22625), (104, 22664), (112, 22697), (120, 22745), (155, 22973),

Gene: DeadP_20 Start: 21847, Stop: 23013, Start Num: 5

Candidate Starts for DeadP_20:

(Start: 4 @21811 has 3 MA's), (Start: 5 @21847 has 131 MA's), (Start: 6 @21853 has 73 MA's), (11, 21913), (18, 21976), (19, 21985), (21, 22012), (23, 22018), (25, 22036), (28, 22075), (31, 22096), (Start: 34 @22123 has 1 MA's), (35, 22141), (Start: 36 @22153 has 1 MA's), (39, 22198), (48, 22282), (53, 22342), (58, 22384), (60, 22402), (61, 22411), (64, 22435), (67, 22456), (77, 22522), (89, 22582), (98, 22639), (104, 22678), (112, 22711), (120, 22759), (155, 22987),

Gene: Deb65_20 Start: 21823, Stop: 22980, Start Num: 6

Candidate Starts for Deb65_20:

(Start: 4 @21781 has 3 MA's), (Start: 5 @21817 has 131 MA's), (Start: 6 @21823 has 73 MA's), (11, 21883), (14, 21922), (17, 21940), (18, 21946), (19, 21955), (20, 21970), (23, 21988), (25, 22006), (31, 22066), (Start: 34 @22093 has 1 MA's), (35, 22111), (Start: 36 @22123 has 1 MA's), (39, 22168), (41, 22186), (48, 22252), (53, 22312), (60, 22372), (62, 22396), (63, 22399), (87, 22534), (89, 22555), (90, 22561), (91, 22564), (98, 22612), (100, 22621), (105, 22654), (112, 22681), (117, 22711), (131, 22795), (148, 22897), (152, 22930), (155, 22963),

Gene: DillTech15_20 Start: 21851, Stop: 23017, Start Num: 5

Candidate Starts for DillTech15_20:

(Start: 3 @21755 has 1 MA's), (Start: 4 @21815 has 3 MA's), (Start: 5 @21851 has 131 MA's), (Start: 6 @21857 has 73 MA's), (11, 21917), (18, 21980), (19, 21989), (21, 22016), (23, 22022), (25, 22040), (28, 22079), (31, 22100), (Start: 34 @22127 has 1 MA's), (35, 22145), (Start: 36 @22157 has 1 MA's), (39, 22202), (48, 22286), (53, 22346), (58, 22388), (60, 22406), (61, 22415), (64, 22439), (67, 22460), (77, 22526), (89, 22586), (98, 22643), (104, 22682), (112, 22715), (120, 22763), (138, 22853), (155, 22991),

Gene: DirtMcgirt_21 Start: 21638, Stop: 22804, Start Num: 5

Candidate Starts for DirtMcgirt_21:

(Start: 4 @21602 has 3 MA's), (Start: 5 @21638 has 131 MA's), (Start: 6 @21644 has 73 MA's), (11, 21704), (18, 21767), (19, 21776), (21, 21803), (23, 21809), (25, 21827), (28, 21866), (31, 21887), (Start: 34 @21914 has 1 MA's), (35, 21932), (Start: 36 @21944 has 1 MA's), (39, 21989), (48, 22073), (53, 22133), (60, 22193), (61, 22202), (64, 22226), (67, 22247), (77, 22313), (89, 22373), (104, 22469), (112, 22502), (120, 22550), (138, 22640), (155, 22778),

Gene: DoRead_20 Start: 21777, Stop: 22952, Start Num: 7

Candidate Starts for DoRead_20:

(Start: 4 @21732 has 3 MA's), (Start: 7 @21777 has 2 MA's), (9, 21816), (11, 21834), (12, 21843), (18, 21897), (19, 21906), (31, 22017), (Start: 34 @22044 has 1 MA's), (39, 22119), (41, 22137), (43, 22155), (47, 22197), (48, 22203), (49, 22212), (51, 22239), (53, 22263), (60, 22323), (66, 22365), (74, 22410), (77, 22446), (81, 22455), (83, 22458), (85, 22479), (89, 22512), (96, 22536), (109, 22629), (118, 22683), (123, 22722), (126, 22734), (129, 22752), (130, 22755), (131, 22758), (140, 22812), (146, 22860), (154, 22917), (155, 22929), (158, 22941),

Gene: DocMcStuffins_21 Start: 21676, Stop: 22848, Start Num: 6

Candidate Starts for DocMcStuffins_21:

(Start: 4 @21634 has 3 MA's), (Start: 5 @21670 has 131 MA's), (Start: 6 @21676 has 73 MA's), (11, 21736), (18, 21799), (20, 21823), (21, 21835), (23, 21841), (25, 21859), (28, 21898), (31, 21919), (Start: 34 @21946 has 1 MA's), (38, 21982), (39, 22021), (41, 22039), (43, 22057), (46, 22087), (47, 22099), (53, 22165), (60, 22225), (62, 22249), (64, 22258), (72, 22294), (75, 22339), (77, 22345), (78, 22348), (88, 22402), (89, 22408), (93, 22426), (98, 22465), (106, 22510), (107, 22513), (115, 22552), (118, 22576), (120, 22585), (122, 22594), (134, 22654), (135, 22660), (156, 22828),

Gene: Donkeykong_20 Start: 21997, Stop: 23157, Start Num: 6

Candidate Starts for Donkeykong_20:

(1, 21505), (Start: 3 @21895 has 1 MA's), (Start: 4 @21955 has 3 MA's), (Start: 6 @21997 has 73 MA's), (11, 22057), (18, 22120), (19, 22129), (23, 22162), (25, 22180), (28, 22219), (31, 22240), (Start: 34 @22267 has 1 MA's), (35, 22285), (Start: 36 @22297 has 1 MA's), (39, 22342), (48, 22426), (53, 22486), (58, 22528), (60, 22546), (61, 22555), (64, 22579), (67, 22600), (77, 22666), (89, 22726), (98, 22783), (104, 22822), (112, 22855), (120, 22903), (138, 22993), (155, 23131),

Gene: Doomphist_20 Start: 21957, Stop: 23117, Start Num: 6

Candidate Starts for Doomphist_20:

(1, 21465), (Start: 3 @21855 has 1 MA's), (Start: 4 @21915 has 3 MA's), (Start: 6 @21957 has 73 MA's), (11, 22017), (18, 22080), (19, 22089), (21, 22116), (23, 22122), (25, 22140), (28, 22179), (31, 22200), (Start: 34 @22227 has 1 MA's), (35, 22245), (Start: 36 @22257 has 1 MA's), (39, 22302), (48, 22386), (53, 22446), (58, 22488), (60, 22506), (64, 22539), (67, 22560), (77, 22626), (89, 22686), (98, 22743), (104, 22782), (112, 22815), (120, 22863), (155, 23091),

Gene: Doomslug_22 Start: 21678, Stop: 22838, Start Num: 6

Candidate Starts for Doomslug_22:

(Start: 3 @21576 has 1 MA's), (Start: 4 @21636 has 3 MA's), (Start: 5 @21672 has 131 MA's), (Start: 6 @21678 has 73 MA's), (11, 21738), (18, 21801), (19, 21810), (21, 21837), (23, 21843), (25, 21861), (28, 21900), (31, 21921), (Start: 34 @21948 has 1 MA's), (35, 21966), (Start: 36 @21978 has 1 MA's), (39, 22023), (48, 22107), (53, 22167), (58, 22209), (60, 22227), (61, 22236), (64, 22260), (67, 22281), (77, 22347), (89, 22407), (98, 22464), (104, 22503), (112, 22536), (120, 22584), (138, 22674), (155, 22812),

Gene: Dorothy_20 Start: 21778, Stop: 22941, Start Num: 5

Candidate Starts for Dorothy_20:

(Start: 4 @21742 has 3 MA's), (Start: 5 @21778 has 131 MA's), (Start: 6 @21784 has 73 MA's), (11, 21844), (14, 21883), (17, 21901), (18, 21907), (19, 21916), (20, 21931), (23, 21949), (25, 21967), (31, 22027), (Start: 34 @22054 has 1 MA's), (35, 22072), (Start: 36 @22084 has 1 MA's), (39, 22129), (41, 22147), (48, 22213), (53, 22273), (60, 22333), (62, 22357), (63, 22360), (87, 22495), (89, 22516), (90, 22522), (91, 22525), (98, 22573), (100, 22582), (105, 22615), (112, 22642), (117, 22672), (131, 22756), (148, 22858), (152, 22891), (155, 22924),

Gene: DosHalletts_21 Start: 21765, Stop: 22967, Start Num: 6

Candidate Starts for DosHalletts_21:

(Start: 4 @21723 has 3 MA's), (Start: 6 @21765 has 73 MA's), (9, 21804), (14, 21861), (17, 21879), (18, 21885), (19, 21894), (22, 21924), (25, 21945), (27, 21981), (29, 21987), (31, 22005), (39, 22107), (43, 22146), (45, 22170), (47, 22188), (48, 22194), (50, 22221), (53, 22254), (54, 22263), (56, 22290), (59, 22308), (60, 22314), (62, 22338), (64, 22347), (69, 22377), (70, 22380), (77, 22452), (79, 22458), (89, 22515), (91, 22524), (98, 22572), (110, 22638), (114, 22656), (126, 22731), (134, 22764), (139, 22797), (143, 22824), (145, 22854), (148, 22869), (149, 22875), (151, 22902),

Gene: DotProduct_20 Start: 21819, Stop: 22985, Start Num: 5

Candidate Starts for DotProduct_20:

(Start: 4 @21783 has 3 MA's), (Start: 5 @21819 has 131 MA's), (Start: 6 @21825 has 73 MA's), (11, 21885), (18, 21948), (19, 21957), (21, 21984), (23, 21990), (25, 22008), (28, 22047), (31, 22068), (Start: 34 @22095 has 1 MA's), (35, 22113), (Start: 36 @22125 has 1 MA's), (39, 22170), (48, 22254), (53, 22314), (60, 22374), (61, 22383), (64, 22407), (67, 22428), (77, 22494), (89, 22554), (98, 22611), (104, 22650), (112, 22683), (120, 22731), (138, 22821), (155, 22959),

Gene: Doug_21 Start: 22370, Stop: 23533, Start Num: 5

Candidate Starts for Doug_21:

(Start: 4 @22334 has 3 MA's), (Start: 5 @22370 has 131 MA's), (Start: 6 @22376 has 73 MA's), (11, 22436), (14, 22475), (17, 22493), (18, 22499), (19, 22508), (20, 22523), (23, 22541), (25, 22559), (28, 22598), (31, 22619), (Start: 34 @22646 has 1 MA's), (39, 22721), (47, 22799), (53, 22865), (60, 22925), (62, 22949), (63, 22952), (87, 23087), (89, 23108), (90, 23114), (91, 23117), (98, 23165), (100, 23174), (105, 23207), (112, 23234), (117, 23264), (131, 23348), (148, 23450), (152, 23483), (155, 23516),

Gene: Drago_21 Start: 21636, Stop: 22802, Start Num: 5

Candidate Starts for Drago_21:

(1, 21150), (Start: 3 @21540 has 1 MA's), (Start: 4 @21600 has 3 MA's), (Start: 5 @21636 has 131 MA's), (Start: 6 @21642 has 73 MA's), (11, 21702), (18, 21765), (19, 21774), (21, 21801), (23, 21807), (25, 21825), (28, 21864), (31, 21885), (Start: 34 @21912 has 1 MA's), (35, 21930), (Start: 36 @21942 has 1 MA's), (39, 21987), (48, 22071), (53, 22131), (57, 22170), (58, 22173), (60, 22191), (61, 22200), (64, 22224), (67, 22245), (77, 22311), (89, 22371), (98, 22428), (104, 22467), (112, 22500), (120, 22548), (138, 22638), (155, 22776),

Gene: Duke13_38 Start: 34222, Stop: 35382, Start Num: 6

Candidate Starts for Duke13_38:

(Start: 3 @34120 has 1 MA's), (Start: 4 @34180 has 3 MA's), (Start: 6 @34222 has 73 MA's), (11, 34282), (18, 34345), (19, 34354), (21, 34381), (23, 34387), (25, 34405), (28, 34444), (31, 34465), (Start: 34 @34492 has 1 MA's), (35, 34510), (Start: 36 @34522 has 1 MA's), (39, 34567), (48, 34651), (53, 34711), (58, 34753), (60, 34771), (64, 34804), (67, 34825), (77, 34891), (89, 34951), (98, 35008), (112, 35080), (120, 35128), (155, 35356),

Gene: Eish_20 Start: 21960, Stop: 23123, Start Num: 5

Candidate Starts for Eish_20:

(Start: 4 @21924 has 3 MA's), (Start: 5 @21960 has 131 MA's), (Start: 6 @21966 has 73 MA's), (11, 22026), (18, 22089), (19, 22098), (20, 22113), (23, 22131), (25, 22149), (31, 22209), (Start: 34 @22236 has 1 MA's), (35, 22254), (Start: 36 @22266 has 1 MA's), (39, 22311), (48, 22395), (53, 22455), (60, 22515), (62, 22539), (63, 22542), (87, 22677), (89, 22698), (90, 22704), (91, 22707), (98, 22755), (100, 22764), (105, 22797), (112, 22824), (117, 22854), (131, 22938), (148, 23040), (152, 23073), (155, 23106),

Gene: EleanorGeorge_20 Start: 21985, Stop: 23151, Start Num: 5

Candidate Starts for EleanorGeorge_20:

(Start: 3 @21889 has 1 MA's), (Start: 4 @21949 has 3 MA's), (Start: 5 @21985 has 131 MA's), (Start: 6 @21991 has 73 MA's), (11, 22051), (18, 22114), (19, 22123), (21, 22150), (23, 22156), (25, 22174), (28, 22213), (31, 22234), (Start: 34 @22261 has 1 MA's), (35, 22279), (Start: 36 @22291 has 1 MA's), (39, 22336), (48, 22420), (53, 22480), (58, 22522), (60, 22540), (61, 22549), (64, 22573), (67, 22594), (77, 22660), (89, 22720), (98, 22777), (104, 22816), (112, 22849), (120, 22897), (138, 22987), (155, 23125),

Gene: EmiMonkey_20 Start: 21775, Stop: 22935, Start Num: 6

Candidate Starts for EmiMonkey_20:

(Start: 4 @21733 has 3 MA's), (Start: 5 @21769 has 131 MA's), (Start: 6 @21775 has 73 MA's), (11, 21835), (18, 21898), (19, 21907), (21, 21934), (23, 21940), (25, 21958), (28, 21997), (31, 22018), (Start: 34 @22045 has 1 MA's), (35, 22063), (Start: 36 @22075 has 1 MA's), (39, 22120), (48, 22204), (53, 22264), (57, 22303), (58, 22306), (60, 22324), (61, 22333), (64, 22357), (67, 22378), (77, 22444), (89, 22504), (98, 22561), (104, 22600), (112, 22633), (120, 22681), (138, 22771), (155, 22909),

Gene: Emma_20 Start: 21871, Stop: 23031, Start Num: 6

Candidate Starts for Emma_20:

(1, 21379), (Start: 3 @21769 has 1 MA's), (Start: 4 @21829 has 3 MA's), (Start: 6 @21871 has 73 MA's), (11, 21931), (18, 21994), (19, 22003), (21, 22030), (23, 22036), (25, 22054), (28, 22093), (31, 22114), (Start: 34 @22141 has 1 MA's), (35, 22159), (Start: 36 @22171 has 1 MA's), (39, 22216), (48, 22300), (53, 22360), (58, 22402), (60, 22420), (61, 22429), (64, 22453), (67, 22474), (77, 22540), (89, 22600), (98, 22657), (104, 22696), (112, 22729), (120, 22777), (138, 22867), (155, 23005),

Gene: Emmaloid_21 Start: 21615, Stop: 22781, Start Num: 5

Candidate Starts for Emmaloid_21:

(Start: 4 @21579 has 3 MA's), (Start: 5 @21615 has 131 MA's), (Start: 6 @21621 has 73 MA's), (11, 21681), (18, 21744), (19, 21753), (21, 21780), (23, 21786), (25, 21804), (28, 21843), (31, 21864),

(Start: 34 @21891 has 1 MA's), (35, 21909), (Start: 36 @21921 has 1 MA's), (39, 21966), (48, 22050), (53, 22110), (57, 22149), (58, 22152), (60, 22170), (61, 22179), (64, 22203), (67, 22224), (77, 22290), (89, 22350), (98, 22407), (104, 22446), (112, 22479), (120, 22527), (138, 22617), (155, 22755),

Gene: Empress_21 Start: 23169, Stop: 24332, Start Num: 5

Candidate Starts for Empress_21:

(Start: 4 @23133 has 3 MA's), (Start: 5 @23169 has 131 MA's), (Start: 6 @23175 has 73 MA's), (11, 23235), (14, 23274), (17, 23292), (18, 23298), (19, 23307), (20, 23322), (23, 23340), (25, 23358), (31, 23418), (Start: 34 @23445 has 1 MA's), (35, 23463), (Start: 36 @23475 has 1 MA's), (39, 23520), (41, 23538), (48, 23604), (53, 23664), (60, 23724), (62, 23748), (63, 23751), (87, 23886), (89, 23907), (90, 23913), (91, 23916), (98, 23964), (100, 23973), (105, 24006), (112, 24033), (117, 24063), (131, 24147), (148, 24249), (152, 24282), (155, 24315),

Gene: Enby_21 Start: 21636, Stop: 22802, Start Num: 5

Candidate Starts for Enby_21:

(1, 21150), (Start: 3 @21540 has 1 MA's), (Start: 4 @21600 has 3 MA's), (Start: 5 @21636 has 131 MA's), (Start: 6 @21642 has 73 MA's), (11, 21702), (18, 21765), (19, 21774), (21, 21801), (23, 21807), (25, 21825), (28, 21864), (31, 21885), (Start: 34 @21912 has 1 MA's), (35, 21930), (Start: 36 @21942 has 1 MA's), (39, 21987), (48, 22071), (53, 22131), (57, 22170), (58, 22173), (60, 22191), (61, 22200), (64, 22224), (67, 22245), (77, 22311), (89, 22371), (98, 22428), (104, 22467), (112, 22500), (120, 22548), (138, 22638), (155, 22776),

Gene: Enzomatic_22 Start: 21863, Stop: 23029, Start Num: 5

Candidate Starts for Enzomatic_22:

(Start: 4 @21827 has 3 MA's), (Start: 5 @21863 has 131 MA's), (Start: 6 @21869 has 73 MA's), (11, 21929), (18, 21992), (19, 22001), (21, 22028), (23, 22034), (25, 22052), (28, 22091), (31, 22112), (Start: 34 @22139 has 1 MA's), (35, 22157), (Start: 36 @22169 has 1 MA's), (39, 22214), (42, 22247), (48, 22298), (53, 22358), (58, 22400), (60, 22418), (61, 22427), (64, 22451), (67, 22472), (77, 22538), (89, 22598), (98, 22655), (104, 22694), (112, 22727), (120, 22775), (155, 23003),

Gene: Eradicator_20 Start: 21801, Stop: 23003, Start Num: 6

Candidate Starts for Eradicator_20:

(Start: 4 @21759 has 3 MA's), (Start: 6 @21801 has 73 MA's), (9, 21840), (17, 21915), (18, 21921), (19, 21930), (22, 21960), (25, 21981), (27, 22017), (29, 22023), (31, 22041), (38, 22104), (39, 22143), (43, 22182), (45, 22206), (47, 22224), (48, 22230), (50, 22257), (53, 22290), (54, 22299), (56, 22326), (59, 22344), (60, 22350), (62, 22374), (64, 22383), (69, 22413), (70, 22416), (77, 22488), (79, 22494), (89, 22551), (91, 22560), (97, 22602), (98, 22608), (110, 22674), (126, 22767), (134, 22800), (139, 22833), (143, 22860), (148, 22905), (149, 22911), (151, 22938),

Gene: Fancypants_20 Start: 21819, Stop: 22985, Start Num: 5

Candidate Starts for Fancypants_20:

(Start: 4 @21783 has 3 MA's), (Start: 5 @21819 has 131 MA's), (Start: 6 @21825 has 73 MA's), (11, 21885), (18, 21948), (20, 21972), (21, 21984), (23, 21990), (25, 22008), (28, 22047), (31, 22068), (Start: 34 @22095 has 1 MA's), (35, 22113), (Start: 36 @22125 has 1 MA's), (39, 22170), (41, 22188), (44, 22215), (48, 22254), (53, 22314), (60, 22374), (61, 22383), (64, 22407), (68, 22431), (76, 22491), (80, 22500), (82, 22503), (85, 22527), (86, 22530), (88, 22551), (89, 22557), (97, 22608), (115, 22698), (124, 22761), (131, 22794), (133, 22797), (134, 22800), (137, 22815), (148, 22887), (149, 22893),

Gene: Fastidio_20 Start: 21788, Stop: 22948, Start Num: 6

Candidate Starts for Fastidio_20:

(Start: 3 @21686 has 1 MA's), (Start: 4 @21746 has 3 MA's), (Start: 5 @21782 has 131 MA's), (Start: 6 @21788 has 73 MA's), (11, 21848), (18, 21911), (19, 21920), (21, 21947), (23, 21953), (25, 21971), (28, 22010), (31, 22031), (Start: 34 @22058 has 1 MA's), (35, 22076), (Start: 36 @22088 has 1 MA's),

(39, 22133), (48, 22217), (53, 22277), (58, 22319), (60, 22337), (61, 22346), (64, 22370), (67, 22391), (77, 22457), (89, 22517), (98, 22574), (104, 22613), (112, 22646), (120, 22694), (138, 22784), (155, 22922),

Gene: Filuzino_20 Start: 21814, Stop: 22974, Start Num: 6

Candidate Starts for Filuzino_20:

(Start: 6 @21814 has 73 MA's), (11, 21874), (18, 21937), (19, 21946), (21, 21973), (23, 21979), (25, 21997), (28, 22036), (31, 22057), (Start: 34 @22084 has 1 MA's), (35, 22102), (Start: 36 @22114 has 1 MA's), (39, 22159), (41, 22177), (48, 22243), (53, 22303), (58, 22345), (60, 22363), (61, 22372), (64, 22396), (67, 22417), (77, 22483), (89, 22543), (98, 22600), (104, 22639), (112, 22672), (120, 22720), (138, 22810), (145, 22867), (155, 22948),

Gene: Firehouse51_21 Start: 22374, Stop: 23540, Start Num: 5

Candidate Starts for Firehouse51_21:

(Start: 3 @22278 has 1 MA's), (Start: 4 @22338 has 3 MA's), (Start: 5 @22374 has 131 MA's), (Start: 6 @22380 has 73 MA's), (11, 22440), (18, 22503), (19, 22512), (21, 22539), (23, 22545), (25, 22563), (28, 22602), (31, 22623), (Start: 34 @22650 has 1 MA's), (35, 22668), (Start: 36 @22680 has 1 MA's), (39, 22725), (48, 22809), (53, 22869), (58, 22911), (60, 22929), (61, 22938), (64, 22962), (67, 22983), (77, 23049), (89, 23109), (98, 23166), (104, 23205), (112, 23238), (120, 23286), (138, 23376), (155, 23514),

Gene: Flathead_21 Start: 21682, Stop: 22848, Start Num: 5

Candidate Starts for Flathead_21:

(Start: 4 @21646 has 3 MA's), (Start: 5 @21682 has 131 MA's), (Start: 6 @21688 has 73 MA's), (11, 21748), (18, 21811), (19, 21820), (21, 21847), (23, 21853), (25, 21871), (28, 21910), (31, 21931), (Start: 34 @21958 has 1 MA's), (35, 21976), (Start: 36 @21988 has 1 MA's), (39, 22033), (48, 22117), (53, 22177), (57, 22216), (58, 22219), (60, 22237), (61, 22246), (64, 22270), (67, 22291), (77, 22357), (89, 22417), (98, 22474), (104, 22513), (112, 22546), (120, 22594), (138, 22684), (155, 22822),

Gene: Florinda_20 Start: 21836, Stop: 22999, Start Num: 5

Candidate Starts for Florinda_20:

(Start: 4 @21800 has 3 MA's), (Start: 5 @21836 has 131 MA's), (Start: 6 @21842 has 73 MA's), (11, 21902), (17, 21959), (18, 21965), (20, 21989), (23, 22007), (25, 22025), (28, 22064), (31, 22085), (Start: 34 @22112 has 1 MA's), (35, 22130), (38, 22148), (39, 22187), (48, 22271), (53, 22331), (60, 22391), (62, 22415), (63, 22418), (87, 22553), (89, 22574), (91, 22583), (98, 22631), (105, 22673), (112, 22700), (117, 22730), (131, 22814), (148, 22916), (152, 22949), (155, 22982),

Gene: Frankie_21 Start: 21927, Stop: 23093, Start Num: 8

Candidate Starts for Frankie_21:

(Start: 8 @21927 has 1 MA's), (13, 21993), (18, 22044), (20, 22068), (21, 22080), (23, 22086), (24, 22098), (25, 22104), (27, 22140), (28, 22143), (31, 22164), (Start: 34 @22191 has 1 MA's), (39, 22266), (41, 22284), (43, 22302), (53, 22410), (60, 22470), (64, 22503), (72, 22539), (75, 22584), (77, 22590), (78, 22593), (88, 22647), (89, 22653), (91, 22662), (93, 22671), (98, 22710), (107, 22758), (120, 22830), (133, 22896), (134, 22899),

Gene: FreddyB_20 Start: 21845, Stop: 23047, Start Num: 6

Candidate Starts for FreddyB_20:

(Start: 4 @21803 has 3 MA's), (Start: 6 @21845 has 73 MA's), (9, 21884), (14, 21941), (18, 21965), (19, 21974), (21, 22001), (22, 22004), (24, 22019), (25, 22025), (27, 22061), (29, 22067), (31, 22085), (39, 22187), (43, 22226), (45, 22250), (47, 22268), (48, 22274), (50, 22301), (51, 22310), (53, 22334), (54, 22343), (56, 22370), (59, 22388), (60, 22394), (64, 22427), (69, 22457), (70, 22460), (77, 22532), (79, 22538), (89, 22595), (91, 22604), (98, 22652), (110, 22718), (114, 22736), (126, 22811), (134, 22844), (143, 22904), (145, 22934), (148, 22949), (149, 22955), (151, 22982),

Gene: Fruitloop_20 Start: 21852, Stop: 23012, Start Num: 6

Candidate Starts for Fruitloop_20:

(Start: 3 @21750 has 1 MA's), (Start: 4 @21810 has 3 MA's), (Start: 6 @21852 has 73 MA's), (11, 21912), (18, 21975), (19, 21984), (21, 22011), (23, 22017), (25, 22035), (28, 22074), (Start: 34 @22122 has 1 MA's), (35, 22140), (Start: 36 @22152 has 1 MA's), (39, 22197), (48, 22281), (53, 22341), (58, 22383), (60, 22401), (61, 22410), (64, 22434), (67, 22455), (77, 22521), (89, 22581), (98, 22638), (104, 22677), (112, 22710), (120, 22758), (155, 22986),

Gene: GUmbie_20 Start: 21819, Stop: 22985, Start Num: 5

Candidate Starts for GUmbie_20:

(Start: 4 @21783 has 3 MA's), (Start: 5 @21819 has 131 MA's), (Start: 6 @21825 has 73 MA's), (11, 21885), (18, 21948), (19, 21957), (21, 21984), (23, 21990), (25, 22008), (28, 22047), (31, 22068), (Start: 34 @22095 has 1 MA's), (35, 22113), (Start: 36 @22125 has 1 MA's), (39, 22170), (48, 22254), (53, 22314), (60, 22374), (61, 22383), (64, 22407), (67, 22428), (77, 22494), (89, 22554), (104, 22650), (112, 22683), (120, 22731), (138, 22821), (155, 22959),

Gene: Gaia_23 Start: 24381, Stop: 25535, Start Num: 7

Candidate Starts for Gaia_23:

(Start: 4 @24336 has 3 MA's), (Start: 7 @24381 has 2 MA's), (9, 24420), (11, 24438), (12, 24447), (17, 24495), (18, 24501), (19, 24510), (31, 24621), (38, 24684), (39, 24723), (41, 24741), (43, 24759), (47, 24801), (48, 24807), (51, 24843), (53, 24867), (56, 24903), (60, 24927), (64, 24960), (68, 24984), (75, 25041), (76, 25044), (77, 25047), (85, 25077), (89, 25107), (91, 25116), (97, 25158), (102, 25194), (119, 25278), (131, 25344), (136, 25359), (149, 25443), (156, 25515),

Gene: Galactic_20 Start: 21811, Stop: 22977, Start Num: 5

Candidate Starts for Galactic_20:

(Start: 4 @21775 has 3 MA's), (Start: 5 @21811 has 131 MA's), (Start: 6 @21817 has 73 MA's), (11, 21877), (18, 21940), (19, 21949), (21, 21976), (23, 21982), (25, 22000), (28, 22039), (31, 22060), (Start: 34 @22087 has 1 MA's), (35, 22105), (Start: 36 @22117 has 1 MA's), (39, 22162), (48, 22246), (53, 22306), (58, 22348), (60, 22366), (61, 22375), (64, 22399), (67, 22420), (77, 22486), (89, 22546), (98, 22603), (104, 22642), (112, 22675), (120, 22723), (138, 22813), (155, 22951),

Gene: Gandalph_20 Start: 21851, Stop: 23053, Start Num: 6

Candidate Starts for Gandalph_20:

(Start: 4 @21809 has 3 MA's), (Start: 6 @21851 has 73 MA's), (9, 21890), (17, 21965), (18, 21971), (19, 21980), (22, 22010), (25, 22031), (27, 22067), (29, 22073), (31, 22091), (38, 22154), (39, 22193), (43, 22232), (45, 22256), (47, 22274), (48, 22280), (50, 22307), (53, 22340), (54, 22349), (56, 22376), (59, 22394), (60, 22400), (62, 22424), (64, 22433), (69, 22463), (70, 22466), (77, 22538), (79, 22544), (89, 22601), (91, 22610), (97, 22652), (98, 22658), (110, 22724), (114, 22742), (126, 22817), (134, 22850), (143, 22910), (145, 22940), (148, 22955), (149, 22961), (151, 22988),

Gene: Geralt_20 Start: 21816, Stop: 22979, Start Num: 5

Candidate Starts for Geralt_20:

(Start: 4 @21780 has 3 MA's), (Start: 5 @21816 has 131 MA's), (Start: 6 @21822 has 73 MA's), (11, 21882), (14, 21921), (17, 21939), (18, 21945), (19, 21954), (20, 21969), (23, 21987), (25, 22005), (31, 22065), (Start: 34 @22092 has 1 MA's), (35, 22110), (Start: 36 @22122 has 1 MA's), (39, 22167), (41, 22185), (48, 22251), (53, 22311), (60, 22371), (62, 22395), (63, 22398), (87, 22533), (89, 22554), (90, 22560), (91, 22563), (98, 22611), (100, 22620), (105, 22653), (112, 22680), (117, 22710), (131, 22794), (148, 22896), (152, 22929), (155, 22962),

Gene: GigiOuiOui_20 Start: 21950, Stop: 23110, Start Num: 6

Candidate Starts for GigiOuiOui_20:

(Start: 3 @21848 has 1 MA's), (Start: 4 @21908 has 3 MA's), (Start: 6 @21950 has 73 MA's), (11, 22010), (18, 22073), (19, 22082), (21, 22109), (23, 22115), (25, 22133), (28, 22172), (31, 22193), (Start: 34 @22220 has 1 MA's), (35, 22238), (Start: 36 @22250 has 1 MA's), (39, 22295), (48, 22379), (53, 22439), (60, 22499), (61, 22508), (64, 22532), (67, 22553), (77, 22619), (89, 22679), (104, 22775), (112, 22808), (120, 22856), (138, 22946), (155, 23084),

Gene: Girafales_21 Start: 21644, Stop: 22807, Start Num: 5

Candidate Starts for Girafales_21:

(Start: 4 @21608 has 3 MA's), (Start: 5 @21644 has 131 MA's), (Start: 6 @21650 has 73 MA's), (11, 21710), (17, 21767), (18, 21773), (20, 21797), (23, 21815), (25, 21833), (28, 21872), (31, 21893), (Start: 34 @21920 has 1 MA's), (35, 21938), (38, 21956), (39, 21995), (48, 22079), (53, 22139), (60, 22199), (62, 22223), (63, 22226), (87, 22361), (89, 22382), (91, 22391), (98, 22439), (105, 22481), (112, 22508), (117, 22538), (131, 22622), (148, 22724), (152, 22757), (155, 22790),

Gene: Girr_20 Start: 21752, Stop: 22954, Start Num: 4

Candidate Starts for Girr_20:

(Start: 4 @21752 has 3 MA's), (Start: 5 @21788 has 131 MA's), (Start: 6 @21794 has 73 MA's), (11, 21854), (18, 21917), (19, 21926), (21, 21953), (23, 21959), (25, 21977), (28, 22016), (31, 22037), (Start: 34 @22064 has 1 MA's), (35, 22082), (Start: 36 @22094 has 1 MA's), (39, 22139), (48, 22223), (53, 22283), (60, 22343), (61, 22352), (64, 22376), (67, 22397), (77, 22463), (89, 22523), (98, 22580), (104, 22619), (112, 22652), (120, 22700), (138, 22790), (155, 22928),

Gene: Gonephishing_36 Start: 32334, Stop: 33494, Start Num: 6

Candidate Starts for Gonephishing_36:

(1, 31842), (Start: 3 @32232 has 1 MA's), (Start: 4 @32292 has 3 MA's), (Start: 6 @32334 has 73 MA's), (11, 32394), (18, 32457), (19, 32466), (21, 32493), (23, 32499), (25, 32517), (28, 32556), (Start: 34 @32604 has 1 MA's), (35, 32622), (Start: 36 @32634 has 1 MA's), (39, 32679), (48, 32763), (53, 32823), (57, 32862), (58, 32865), (60, 32883), (61, 32892), (64, 32916), (67, 32937), (77, 33003), (89, 33063), (98, 33120), (104, 33159), (112, 33192), (120, 33240), (138, 33330), (155, 33468),

Gene: Gorge_20 Start: 21812, Stop: 23014, Start Num: 6

Candidate Starts for Gorge_20:

(Start: 4 @21770 has 3 MA's), (Start: 6 @21812 has 73 MA's), (9, 21851), (18, 21932), (19, 21941), (21, 21968), (22, 21971), (24, 21986), (25, 21992), (27, 22028), (29, 22034), (31, 22052), (39, 22154), (43, 22193), (45, 22217), (47, 22235), (48, 22241), (50, 22268), (51, 22277), (53, 22301), (54, 22310), (56, 22337), (59, 22355), (60, 22361), (64, 22394), (69, 22424), (70, 22427), (77, 22499), (79, 22505), (89, 22562), (91, 22571), (98, 22619), (110, 22685), (114, 22703), (126, 22778), (134, 22811), (143, 22871), (145, 22901), (148, 22916), (149, 22922), (151, 22949),

Gene: Grimmer_21 Start: 22477, Stop: 23586, Start Num: 5

Candidate Starts for Grimmer_21:

(1, 21991), (Start: 3 @22381 has 1 MA's), (Start: 4 @22441 has 3 MA's), (Start: 5 @22477 has 131 MA's), (Start: 6 @22483 has 73 MA's), (17, 22543), (18, 22549), (19, 22558), (20, 22573), (23, 22591), (25, 22609), (27, 22645), (28, 22648), (31, 22669), (Start: 34 @22696 has 1 MA's), (39, 22771), (47, 22849), (53, 22915), (60, 22975), (67, 23029), (77, 23095), (89, 23155), (94, 23176), (98, 23212), (112, 23284), (120, 23332), (125, 23368), (155, 23560),

Gene: Guppsters_21 Start: 21995, Stop: 23197, Start Num: 6

Candidate Starts for Guppsters_21:

(Start: 4 @21953 has 3 MA's), (Start: 6 @21995 has 73 MA's), (9, 22034), (17, 22109), (18, 22115), (19, 22124), (21, 22151), (22, 22154), (24, 22169), (25, 22175), (27, 22211), (29, 22217), (31, 22235), (39, 22337), (43, 22376), (45, 22400), (47, 22418), (48, 22424), (50, 22451), (53, 22484), (54, 22493), (56, 22520), (59, 22538), (60, 22544), (62, 22568), (64, 22577), (69, 22607), (70, 22610), (77, 22682),

(79, 22688), (89, 22745), (91, 22754), (97, 22796), (98, 22802), (110, 22868), (126, 22961), (134, 22994), (143, 23054), (145, 23084), (148, 23099), (151, 23132),

Gene: Hades_20 Start: 21844, Stop: 23046, Start Num: 6

Candidate Starts for Hades_20:

(Start: 4 @21802 has 3 MA's), (Start: 6 @21844 has 73 MA's), (9, 21883), (17, 21958), (18, 21964), (19, 21973), (22, 22003), (25, 22024), (27, 22060), (29, 22066), (31, 22084), (38, 22147), (39, 22186), (43, 22225), (45, 22249), (47, 22267), (48, 22273), (50, 22300), (53, 22333), (54, 22342), (56, 22369), (59, 22387), (60, 22393), (64, 22426), (69, 22456), (70, 22459), (77, 22531), (79, 22537), (89, 22594), (91, 22603), (98, 22651), (110, 22717), (114, 22735), (126, 22810), (134, 22843), (143, 22903), (145, 22933), (148, 22948), (149, 22954), (151, 22981),

Gene: Hamulus_20 Start: 21820, Stop: 22986, Start Num: 5

Candidate Starts for Hamulus_20:

(Start: 4 @21784 has 3 MA's), (Start: 5 @21820 has 131 MA's), (Start: 6 @21826 has 73 MA's), (11, 21886), (18, 21949), (19, 21958), (21, 21985), (23, 21991), (25, 22009), (28, 22048), (31, 22069), (Start: 34 @22096 has 1 MA's), (35, 22114), (Start: 36 @22126 has 1 MA's), (39, 22171), (48, 22255), (53, 22315), (58, 22357), (60, 22375), (61, 22384), (64, 22408), (67, 22429), (77, 22495), (89, 22555), (98, 22612), (104, 22651), (112, 22684), (120, 22732), (138, 22822), (145, 22879), (155, 22960),

Gene: Harley_20 Start: 21810, Stop: 22976, Start Num: 5

Candidate Starts for Harley_20:

(Start: 4 @21774 has 3 MA's), (Start: 5 @21810 has 131 MA's), (Start: 6 @21816 has 73 MA's), (11, 21876), (18, 21939), (20, 21963), (23, 21981), (25, 21999), (28, 22038), (31, 22059), (Start: 34 @22086 has 1 MA's), (35, 22104), (Start: 36 @22116 has 1 MA's), (39, 22161), (48, 22245), (53, 22305), (60, 22365), (64, 22398), (67, 22419), (77, 22485), (89, 22545), (104, 22641), (112, 22674), (120, 22722), (155, 22950),

Gene: Hegedechwinu_21 Start: 21665, Stop: 22831, Start Num: 5

Candidate Starts for Hegedechwinu_21:

(1, 21179), (Start: 3 @21569 has 1 MA's), (Start: 4 @21629 has 3 MA's), (Start: 5 @21665 has 131 MA's), (Start: 6 @21671 has 73 MA's), (11, 21731), (18, 21794), (19, 21803), (21, 21830), (23, 21836), (25, 21854), (28, 21893), (31, 21914), (Start: 34 @21941 has 1 MA's), (35, 21959), (Start: 36 @21971 has 1 MA's), (39, 22016), (48, 22100), (53, 22160), (57, 22199), (58, 22202), (60, 22220), (61, 22229), (64, 22253), (67, 22274), (77, 22340), (89, 22400), (98, 22457), (104, 22496), (112, 22529), (120, 22577), (138, 22667), (155, 22805),

Gene: Hlubikazi_20 Start: 21912, Stop: 23078, Start Num: 5

Candidate Starts for Hlubikazi_20:

(1, 21426), (Start: 3 @21816 has 1 MA's), (Start: 4 @21876 has 3 MA's), (Start: 5 @21912 has 131 MA's), (Start: 6 @21918 has 73 MA's), (11, 21978), (18, 22041), (19, 22050), (21, 22077), (23, 22083), (25, 22101), (28, 22140), (31, 22161), (Start: 34 @22188 has 1 MA's), (35, 22206), (Start: 36 @22218 has 1 MA's), (39, 22263), (48, 22347), (53, 22407), (58, 22449), (60, 22467), (61, 22476), (64, 22500), (67, 22521), (77, 22587), (89, 22647), (98, 22704), (104, 22743), (112, 22776), (120, 22824), (138, 22914), (155, 23052),

Gene: IMpilo_20 Start: 21847, Stop: 23013, Start Num: 5

Candidate Starts for IMpilo_20:

(Start: 3 @21751 has 1 MA's), (Start: 4 @21811 has 3 MA's), (Start: 5 @21847 has 131 MA's), (Start: 6 @21853 has 73 MA's), (11, 21913), (18, 21976), (19, 21985), (21, 22012), (23, 22018), (25, 22036), (28, 22075), (31, 22096), (Start: 34 @22123 has 1 MA's), (35, 22141), (Start: 36 @22153 has 1 MA's), (39, 22198), (48, 22282), (53, 22342), (58, 22384), (60, 22402), (61, 22411), (64, 22435), (67, 22456), (77, 22522), (89, 22582), (98, 22639), (104, 22678), (112, 22711), (120, 22759), (138, 22849), (145,

22906), (155, 22987),

Gene: lbOuu_20 Start: 21820, Stop: 22980, Start Num: 6

Candidate Starts for lbOuu_20:

(Start: 3 @21718 has 1 MA's), (Start: 4 @21778 has 3 MA's), (Start: 6 @21820 has 73 MA's), (11, 21880), (18, 21943), (19, 21952), (21, 21979), (23, 21985), (25, 22003), (28, 22042), (31, 22063), (Start: 34 @22090 has 1 MA's), (35, 22108), (Start: 36 @22120 has 1 MA's), (39, 22165), (48, 22249), (53, 22309), (58, 22351), (60, 22369), (61, 22378), (64, 22402), (67, 22423), (77, 22489), (89, 22549), (98, 22606), (104, 22645), (112, 22678), (120, 22726), (138, 22816), (155, 22954),

Gene: lbhubesi_20 Start: 21810, Stop: 22982, Start Num: 6

Candidate Starts for lbhubesi_20:

(Start: 4 @21768 has 3 MA's), (Start: 5 @21804 has 131 MA's), (Start: 6 @21810 has 73 MA's), (11, 21870), (18, 21933), (20, 21957), (23, 21975), (25, 21993), (28, 22032), (31, 22053), (Start: 34 @22080 has 1 MA's), (39, 22155), (41, 22173), (43, 22191), (47, 22233), (53, 22299), (60, 22359), (62, 22383), (72, 22428), (75, 22473), (77, 22479), (89, 22542), (91, 22551), (97, 22593), (108, 22653), (120, 22719), (123, 22749), (126, 22761), (127, 22767), (131, 22782), (133, 22785), (134, 22788), (135, 22794), (142, 22833), (148, 22884), (151, 22917), (155, 22956),

Gene: Inventum_20 Start: 21952, Stop: 23115, Start Num: 5

Candidate Starts for Inventum_20:

(Start: 4 @21916 has 3 MA's), (Start: 5 @21952 has 131 MA's), (Start: 6 @21958 has 73 MA's), (11, 22018), (14, 22057), (17, 22075), (18, 22081), (19, 22090), (20, 22105), (23, 22123), (25, 22141), (31, 22201), (Start: 34 @22228 has 1 MA's), (35, 22246), (Start: 36 @22258 has 1 MA's), (39, 22303), (41, 22321), (48, 22387), (53, 22447), (60, 22507), (62, 22531), (63, 22534), (87, 22669), (89, 22690), (90, 22696), (91, 22699), (98, 22747), (100, 22756), (105, 22789), (112, 22816), (117, 22846), (131, 22930), (148, 23032), (152, 23065), (155, 23098),

Gene: IrishSherpFalk_21 Start: 23174, Stop: 24340, Start Num: 5

Candidate Starts for IrishSherpFalk_21:

(Start: 3 @23078 has 1 MA's), (Start: 4 @23138 has 3 MA's), (Start: 5 @23174 has 131 MA's), (Start: 6 @23180 has 73 MA's), (11, 23240), (18, 23303), (19, 23312), (21, 23339), (23, 23345), (25, 23363), (28, 23402), (31, 23423), (Start: 34 @23450 has 1 MA's), (35, 23468), (Start: 36 @23480 has 1 MA's), (39, 23525), (48, 23609), (53, 23669), (57, 23708), (58, 23711), (60, 23729), (61, 23738), (64, 23762), (67, 23783), (77, 23849), (89, 23909), (98, 23966), (104, 24005), (112, 24038), (120, 24086), (138, 24176), (155, 24314),

Gene: JalFarm20_22 Start: 22184, Stop: 23350, Start Num: 5

Candidate Starts for JalFarm20_22:

(Start: 3 @22088 has 1 MA's), (Start: 4 @22148 has 3 MA's), (Start: 5 @22184 has 131 MA's), (Start: 6 @22190 has 73 MA's), (11, 22250), (18, 22313), (19, 22322), (21, 22349), (23, 22355), (25, 22373), (28, 22412), (Start: 34 @22460 has 1 MA's), (35, 22478), (Start: 36 @22490 has 1 MA's), (39, 22535), (48, 22619), (53, 22679), (58, 22721), (60, 22739), (61, 22748), (64, 22772), (67, 22793), (77, 22859), (89, 22919), (98, 22976), (104, 23015), (112, 23048), (120, 23096), (138, 23186), (155, 23324),

Gene: James_20 Start: 21808, Stop: 23010, Start Num: 6

Candidate Starts for James_20:

(Start: 4 @21766 has 3 MA's), (Start: 6 @21808 has 73 MA's), (9, 21847), (18, 21928), (19, 21937), (21, 21964), (22, 21967), (24, 21982), (25, 21988), (27, 22024), (29, 22030), (31, 22048), (39, 22150), (43, 22189), (45, 22213), (47, 22231), (48, 22237), (50, 22264), (51, 22273), (53, 22297), (54, 22306), (56, 22333), (59, 22351), (60, 22357), (64, 22390), (69, 22420), (70, 22423), (77, 22495), (79, 22501), (89, 22558), (91, 22567), (98, 22615), (110, 22681), (114, 22699), (126, 22774), (134, 22807), (143, 22867), (145, 22897), (148, 22912), (149, 22918), (151, 22945),

Gene: Jant_20 Start: 21970, Stop: 23130, Start Num: 6

Candidate Starts for Jant_20:

(Start: 4 @21928 has 3 MA's), (Start: 5 @21964 has 131 MA's), (Start: 6 @21970 has 73 MA's), (11, 22030), (18, 22093), (20, 22117), (21, 22129), (23, 22135), (25, 22153), (28, 22192), (31, 22213), (Start: 34 @22240 has 1 MA's), (39, 22315), (41, 22333), (43, 22351), (46, 22381), (47, 22393), (53, 22459), (60, 22519), (64, 22552), (68, 22576), (75, 22633), (85, 22672), (89, 22702), (90, 22708), (97, 22753), (101, 22777), (115, 22843), (123, 22906), (131, 22939), (137, 22960), (148, 23032), (150, 23059), (153, 23077),

Gene: Jacob_20 Start: 21843, Stop: 23045, Start Num: 6

Candidate Starts for Jacob_20:

(Start: 4 @21801 has 3 MA's), (Start: 6 @21843 has 73 MA's), (9, 21882), (14, 21939), (18, 21963), (19, 21972), (21, 21999), (22, 22002), (24, 22017), (25, 22023), (27, 22059), (29, 22065), (31, 22083), (39, 22185), (43, 22224), (45, 22248), (47, 22266), (48, 22272), (50, 22299), (51, 22308), (53, 22332), (54, 22341), (56, 22368), (59, 22386), (60, 22392), (64, 22425), (69, 22455), (70, 22458), (77, 22530), (79, 22536), (89, 22593), (91, 22602), (98, 22650), (110, 22716), (114, 22734), (126, 22809), (134, 22842), (143, 22902), (145, 22932), (148, 22947), (149, 22953), (151, 22980),

Gene: Jinglebell_19 Start: 22045, Stop: 23220, Start Num: 5

Candidate Starts for Jinglebell_19:

(Start: 4 @22009 has 3 MA's), (Start: 5 @22045 has 131 MA's), (Start: 6 @22051 has 73 MA's), (11, 22111), (18, 22174), (19, 22183), (20, 22198), (21, 22210), (23, 22216), (24, 22228), (25, 22234), (28, 22273), (31, 22294), (33, 22315), (Start: 34 @22321 has 1 MA's), (35, 22339), (Start: 36 @22351 has 1 MA's), (39, 22396), (40, 22405), (44, 22441), (46, 22462), (48, 22480), (53, 22540), (60, 22600), (64, 22633), (77, 22720), (78, 22723), (79, 22726), (89, 22780), (97, 22831), (103, 22873), (107, 22885), (113, 22912), (115, 22924), (120, 22957), (127, 23005), (133, 23023), (148, 23122),

Gene: Job42_23 Start: 23499, Stop: 24665, Start Num: 5

Candidate Starts for Job42_23:

(Start: 3 @23403 has 1 MA's), (Start: 4 @23463 has 3 MA's), (Start: 5 @23499 has 131 MA's), (Start: 6 @23505 has 73 MA's), (11, 23565), (18, 23628), (19, 23637), (21, 23664), (23, 23670), (25, 23688), (28, 23727), (30, 23745), (31, 23748), (Start: 34 @23775 has 1 MA's), (35, 23793), (Start: 36 @23805 has 1 MA's), (39, 23850), (48, 23934), (53, 23994), (58, 24036), (60, 24054), (61, 24063), (64, 24087), (67, 24108), (77, 24174), (89, 24234), (98, 24291), (104, 24330), (112, 24363), (120, 24411), (138, 24501), (155, 24639),

Gene: JoeyJr_20 Start: 21988, Stop: 23151, Start Num: 5

Candidate Starts for JoeyJr_20:

(Start: 4 @21952 has 3 MA's), (Start: 5 @21988 has 131 MA's), (Start: 6 @21994 has 73 MA's), (11, 22054), (14, 22093), (17, 22111), (18, 22117), (19, 22126), (20, 22141), (23, 22159), (25, 22177), (31, 22237), (Start: 34 @22264 has 1 MA's), (35, 22282), (Start: 36 @22294 has 1 MA's), (39, 22339), (41, 22357), (48, 22423), (53, 22483), (60, 22543), (62, 22567), (63, 22570), (87, 22705), (89, 22726), (90, 22732), (91, 22735), (98, 22783), (100, 22792), (105, 22825), (112, 22852), (117, 22882), (131, 22966), (148, 23068), (152, 23101), (155, 23134),

Gene: Juice456_22 Start: 22936, Stop: 24102, Start Num: 5

Candidate Starts for Juice456_22:

(Start: 3 @22840 has 1 MA's), (Start: 4 @22900 has 3 MA's), (Start: 5 @22936 has 131 MA's), (Start: 6 @22942 has 73 MA's), (11, 23002), (18, 23065), (19, 23074), (21, 23101), (23, 23107), (25, 23125), (28, 23164), (31, 23185), (Start: 34 @23212 has 1 MA's), (35, 23230), (Start: 36 @23242 has 1 MA's), (39, 23287), (48, 23371), (53, 23431), (58, 23473), (60, 23491), (61, 23500), (64, 23524), (67, 23545), (77, 23611), (89, 23671), (98, 23728), (104, 23767), (112, 23800), (120, 23848), (138, 23938), (155,

24076),

Gene: Juniper1_20 Start: 21808, Stop: 22974, Start Num: 5

Candidate Starts for Juniper1_20:

(Start: 4 @21772 has 3 MA's), (Start: 5 @21808 has 131 MA's), (Start: 6 @21814 has 73 MA's), (11, 21874), (18, 21937), (20, 21961), (21, 21973), (23, 21979), (25, 21997), (27, 22033), (28, 22036), (31, 22057), (Start: 34 @22084 has 1 MA's), (39, 22159), (41, 22177), (43, 22195), (46, 22225), (47, 22237), (53, 22303), (60, 22363), (64, 22396), (65, 22399), (68, 22420), (75, 22477), (85, 22516), (89, 22546), (90, 22552), (97, 22597), (101, 22621), (115, 22687), (123, 22750), (131, 22783), (137, 22804), (148, 22876), (150, 22903), (153, 22921),

Gene: Karhdo_20 Start: 21945, Stop: 23111, Start Num: 5

Candidate Starts for Karhdo_20:

(Start: 4 @21909 has 3 MA's), (Start: 5 @21945 has 131 MA's), (Start: 6 @21951 has 73 MA's), (11, 22011), (18, 22074), (19, 22083), (21, 22110), (23, 22116), (25, 22134), (28, 22173), (Start: 34 @22221 has 1 MA's), (35, 22239), (Start: 36 @22251 has 1 MA's), (39, 22296), (48, 22380), (53, 22440), (58, 22482), (60, 22500), (64, 22533), (67, 22554), (77, 22620), (89, 22680), (98, 22737), (104, 22776), (112, 22809), (138, 22947), (155, 23085),

Gene: Kimberlium_22 Start: 22936, Stop: 24102, Start Num: 5

Candidate Starts for Kimberlium_22:

(Start: 3 @22840 has 1 MA's), (Start: 4 @22900 has 3 MA's), (Start: 5 @22936 has 131 MA's), (Start: 6 @22942 has 73 MA's), (11, 23002), (18, 23065), (19, 23074), (21, 23101), (23, 23107), (25, 23125), (28, 23164), (31, 23185), (Start: 34 @23212 has 1 MA's), (35, 23230), (Start: 36 @23242 has 1 MA's), (39, 23287), (48, 23371), (53, 23431), (58, 23473), (60, 23491), (61, 23500), (64, 23524), (67, 23545), (77, 23611), (89, 23671), (98, 23728), (104, 23767), (112, 23800), (120, 23848), (138, 23938), (155, 24076),

Gene: KingJulian_20 Start: 21854, Stop: 23020, Start Num: 5

Candidate Starts for KingJulian_20:

(Start: 3 @21758 has 1 MA's), (Start: 4 @21818 has 3 MA's), (Start: 5 @21854 has 131 MA's), (Start: 6 @21860 has 73 MA's), (11, 21920), (18, 21983), (19, 21992), (21, 22019), (23, 22025), (25, 22043), (28, 22082), (31, 22103), (Start: 34 @22130 has 1 MA's), (35, 22148), (Start: 36 @22160 has 1 MA's), (39, 22205), (48, 22289), (53, 22349), (58, 22391), (60, 22409), (61, 22418), (64, 22442), (67, 22463), (77, 22529), (89, 22589), (98, 22646), (104, 22685), (112, 22718), (120, 22766), (138, 22856), (155, 22994),

Gene: KingMidas_21 Start: 23121, Stop: 24284, Start Num: 5

Candidate Starts for KingMidas_21:

(Start: 4 @23085 has 3 MA's), (Start: 5 @23121 has 131 MA's), (Start: 6 @23127 has 73 MA's), (11, 23187), (14, 23226), (17, 23244), (18, 23250), (19, 23259), (20, 23274), (23, 23292), (25, 23310), (26, 23313), (27, 23346), (28, 23349), (31, 23370), (Start: 34 @23397 has 1 MA's), (35, 23415), (Start: 36 @23427 has 1 MA's), (39, 23472), (41, 23490), (48, 23556), (53, 23616), (60, 23676), (62, 23700), (63, 23703), (87, 23838), (89, 23859), (90, 23865), (91, 23868), (98, 23916), (100, 23925), (105, 23958), (112, 23985), (117, 24015), (131, 24099), (148, 24201), (152, 24234), (155, 24267),

Gene: Krakatau_21 Start: 22518, Stop: 23678, Start Num: 6

Candidate Starts for Krakatau_21:

(Start: 4 @22476 has 3 MA's), (Start: 5 @22512 has 131 MA's), (Start: 6 @22518 has 73 MA's), (11, 22578), (18, 22641), (19, 22650), (20, 22665), (23, 22683), (25, 22701), (28, 22740), (31, 22761), (Start: 34 @22788 has 1 MA's), (35, 22806), (Start: 36 @22818 has 1 MA's), (39, 22863), (48, 22947), (53, 23007), (60, 23067), (64, 23100), (67, 23121), (77, 23187), (89, 23247), (98, 23304), (112, 23376), (120, 23424), (138, 23514), (155, 23652),

Gene: KristaRAM_21 Start: 22487, Stop: 23653, Start Num: 5

Candidate Starts for KristaRAM_21:

(1, 22001), (Start: 3 @22391 has 1 MA's), (Start: 4 @22451 has 3 MA's), (Start: 5 @22487 has 131 MA's), (Start: 6 @22493 has 73 MA's), (11, 22553), (18, 22616), (19, 22625), (21, 22652), (23, 22658), (25, 22676), (28, 22715), (31, 22736), (Start: 34 @22763 has 1 MA's), (35, 22781), (Start: 36 @22793 has 1 MA's), (39, 22838), (48, 22922), (53, 22982), (58, 23024), (60, 23042), (61, 23051), (64, 23075), (67, 23096), (77, 23162), (89, 23222), (98, 23279), (104, 23318), (112, 23351), (120, 23399), (138, 23489), (155, 23627),

Gene: Latretium_21 Start: 22494, Stop: 23660, Start Num: 5

Candidate Starts for Latretium_21:

(Start: 4 @22458 has 3 MA's), (Start: 5 @22494 has 131 MA's), (Start: 6 @22500 has 73 MA's), (11, 22560), (17, 22617), (18, 22623), (19, 22632), (20, 22647), (21, 22659), (23, 22665), (25, 22683), (27, 22719), (28, 22722), (31, 22743), (Start: 34 @22770 has 1 MA's), (39, 22845), (47, 22923), (53, 22989), (58, 23031), (60, 23049), (61, 23058), (64, 23082), (67, 23103), (77, 23169), (89, 23229), (98, 23286), (104, 23325), (112, 23358), (120, 23406), (138, 23496), (155, 23634),

Gene: Leozinho_21 Start: 21660, Stop: 22826, Start Num: 5

Candidate Starts for Leozinho_21:

(Start: 4 @21624 has 3 MA's), (Start: 5 @21660 has 131 MA's), (Start: 6 @21666 has 73 MA's), (11, 21726), (18, 21789), (19, 21798), (21, 21825), (23, 21831), (25, 21849), (28, 21888), (31, 21909), (Start: 34 @21936 has 1 MA's), (35, 21954), (Start: 36 @21966 has 1 MA's), (39, 22011), (48, 22095), (53, 22155), (60, 22215), (61, 22224), (64, 22248), (67, 22269), (77, 22335), (89, 22395), (104, 22491), (112, 22524), (120, 22572), (138, 22662), (155, 22800),

Gene: Leperchaun_20 Start: 21825, Stop: 23027, Start Num: 6

Candidate Starts for Leperchaun_20:

(Start: 4 @21783 has 3 MA's), (Start: 6 @21825 has 73 MA's), (9, 21864), (18, 21945), (19, 21954), (22, 21984), (25, 22005), (27, 22041), (29, 22047), (31, 22065), (39, 22167), (43, 22206), (47, 22248), (48, 22254), (50, 22281), (53, 22314), (54, 22323), (56, 22350), (59, 22368), (60, 22374), (62, 22398), (64, 22407), (69, 22437), (70, 22440), (77, 22512), (79, 22518), (89, 22575), (91, 22584), (97, 22626), (98, 22632), (110, 22698), (114, 22716), (126, 22791), (134, 22824), (143, 22884), (145, 22914), (148, 22929), (149, 22935), (151, 22962),

Gene: LilMoolah_20 Start: 21942, Stop: 23144, Start Num: 6

Candidate Starts for LilMoolah_20:

(Start: 4 @21900 has 3 MA's), (Start: 6 @21942 has 73 MA's), (9, 21981), (18, 22062), (19, 22071), (21, 22098), (22, 22101), (24, 22116), (25, 22122), (27, 22158), (29, 22164), (31, 22182), (39, 22284), (43, 22323), (45, 22347), (47, 22365), (48, 22371), (50, 22398), (51, 22407), (53, 22431), (54, 22440), (56, 22467), (59, 22485), (60, 22491), (64, 22524), (69, 22554), (70, 22557), (77, 22629), (79, 22635), (89, 22692), (91, 22701), (98, 22749), (110, 22815), (114, 22833), (126, 22908), (134, 22941), (143, 23001), (145, 23031), (148, 23046), (149, 23052), (151, 23079),

Gene: LittleE_41 Start: 35407, Stop: 36573, Start Num: 5

Candidate Starts for LittleE_41:

(Start: 3 @35311 has 1 MA's), (Start: 4 @35371 has 3 MA's), (Start: 5 @35407 has 131 MA's), (Start: 6 @35413 has 73 MA's), (11, 35473), (18, 35536), (19, 35545), (21, 35572), (23, 35578), (25, 35596), (28, 35635), (31, 35656), (Start: 34 @35683 has 1 MA's), (35, 35701), (Start: 36 @35713 has 1 MA's), (39, 35758), (48, 35842), (53, 35902), (57, 35941), (58, 35944), (60, 35962), (61, 35971), (64, 35995), (67, 36016), (77, 36082), (89, 36142), (98, 36199), (104, 36238), (112, 36271), (120, 36319), (138, 36409), (155, 36547),

Gene: LittleShirley_21 Start: 21635, Stop: 22801, Start Num: 5

Candidate Starts for LittleShirley_21:

(Start: 4 @21599 has 3 MA's), (Start: 5 @21635 has 131 MA's), (Start: 6 @21641 has 73 MA's), (11, 21701), (18, 21764), (19, 21773), (21, 21800), (23, 21806), (25, 21824), (28, 21863), (31, 21884), (Start: 34 @21911 has 1 MA's), (35, 21929), (Start: 36 @21941 has 1 MA's), (39, 21986), (48, 22070), (53, 22130), (57, 22169), (58, 22172), (60, 22190), (61, 22199), (64, 22223), (67, 22244), (77, 22310), (89, 22370), (98, 22427), (104, 22466), (112, 22499), (120, 22547), (138, 22637), (155, 22775),

Gene: Lizziana_20 Start: 21817, Stop: 23019, Start Num: 6

Candidate Starts for Lizziana_20:

(Start: 4 @21775 has 3 MA's), (Start: 6 @21817 has 73 MA's), (9, 21856), (14, 21913), (18, 21937), (19, 21946), (21, 21973), (22, 21976), (24, 21991), (25, 21997), (27, 22033), (29, 22039), (31, 22057), (39, 22159), (43, 22198), (45, 22222), (47, 22240), (48, 22246), (50, 22273), (51, 22282), (53, 22306), (54, 22315), (56, 22342), (59, 22360), (60, 22366), (64, 22399), (69, 22429), (70, 22432), (77, 22504), (79, 22510), (89, 22567), (91, 22576), (98, 22624), (110, 22690), (114, 22708), (126, 22783), (134, 22816), (143, 22876), (145, 22906), (148, 22921), (149, 22927), (151, 22954),

Gene: Llama_20 Start: 22051, Stop: 23220, Start Num: 6

Candidate Starts for Llama_20:

(Start: 4 @22009 has 3 MA's), (Start: 5 @22045 has 131 MA's), (Start: 6 @22051 has 73 MA's), (11, 22111), (18, 22174), (19, 22183), (20, 22198), (21, 22210), (23, 22216), (24, 22228), (25, 22234), (28, 22273), (31, 22294), (33, 22315), (Start: 34 @22321 has 1 MA's), (35, 22339), (Start: 36 @22351 has 1 MA's), (39, 22396), (40, 22405), (44, 22441), (46, 22462), (48, 22480), (53, 22540), (60, 22600), (64, 22633), (77, 22720), (78, 22723), (79, 22726), (89, 22780), (97, 22831), (103, 22873), (107, 22885), (113, 22912), (115, 22924), (120, 22957), (127, 23005), (133, 23023), (148, 23122),

Gene: Llij_20 Start: 21800, Stop: 22966, Start Num: 5

Candidate Starts for Llij_20:

(1, 21314), (Start: 3 @21704 has 1 MA's), (Start: 4 @21764 has 3 MA's), (Start: 5 @21800 has 131 MA's), (Start: 6 @21806 has 73 MA's), (11, 21866), (18, 21929), (19, 21938), (21, 21965), (23, 21971), (25, 21989), (28, 22028), (31, 22049), (Start: 34 @22076 has 1 MA's), (35, 22094), (Start: 36 @22106 has 1 MA's), (39, 22151), (48, 22235), (53, 22295), (57, 22334), (58, 22337), (60, 22355), (61, 22364), (64, 22388), (67, 22409), (77, 22475), (89, 22535), (98, 22592), (104, 22631), (112, 22664), (120, 22712), (138, 22802), (155, 22940),

Gene: Lorde_21 Start: 21636, Stop: 22802, Start Num: 5

Candidate Starts for Lorde_21:

(1, 21150), (Start: 3 @21540 has 1 MA's), (Start: 4 @21600 has 3 MA's), (Start: 5 @21636 has 131 MA's), (Start: 6 @21642 has 73 MA's), (11, 21702), (18, 21765), (19, 21774), (21, 21801), (23, 21807), (25, 21825), (28, 21864), (31, 21885), (Start: 34 @21912 has 1 MA's), (35, 21930), (Start: 36 @21942 has 1 MA's), (39, 21987), (48, 22071), (53, 22131), (57, 22170), (58, 22173), (60, 22191), (61, 22200), (64, 22224), (67, 22245), (77, 22311), (89, 22371), (98, 22428), (104, 22467), (112, 22500), (120, 22548), (138, 22638), (155, 22776),

Gene: Lucia_21 Start: 21859, Stop: 23061, Start Num: 6

Candidate Starts for Lucia_21:

(Start: 4 @21817 has 3 MA's), (Start: 6 @21859 has 73 MA's), (9, 21898), (11, 21916), (14, 21955), (16, 21961), (17, 21973), (18, 21979), (25, 22039), (27, 22075), (29, 22081), (31, 22099), (39, 22201), (43, 22240), (45, 22264), (47, 22282), (48, 22288), (50, 22315), (53, 22348), (54, 22357), (56, 22384), (59, 22402), (60, 22408), (64, 22441), (69, 22471), (70, 22474), (77, 22546), (79, 22552), (89, 22609), (91, 22618), (98, 22666), (110, 22732), (114, 22750), (126, 22825), (134, 22858), (143, 22918), (145, 22948), (148, 22963), (149, 22969), (151, 22996),

Gene: LunaBlu_21 Start: 21900, Stop: 23060, Start Num: 6

Candidate Starts for LunaBlu_21:

(1, 21408), (Start: 3 @21798 has 1 MA's), (Start: 4 @21858 has 3 MA's), (Start: 6 @21900 has 73 MA's), (11, 21960), (18, 22023), (19, 22032), (21, 22059), (23, 22065), (25, 22083), (28, 22122), (31, 22143), (Start: 34 @22170 has 1 MA's), (35, 22188), (Start: 36 @22200 has 1 MA's), (39, 22245), (48, 22329), (53, 22389), (58, 22431), (60, 22449), (64, 22482), (67, 22503), (77, 22569), (89, 22629), (98, 22686), (104, 22725), (112, 22758), (120, 22806), (155, 23034),

Gene: Mahavrat_20 Start: 21805, Stop: 22971, Start Num: 5

Candidate Starts for Mahavrat_20:

(Start: 4 @21769 has 3 MA's), (Start: 5 @21805 has 131 MA's), (Start: 6 @21811 has 73 MA's), (11, 21871), (18, 21934), (20, 21958), (21, 21970), (23, 21976), (25, 21994), (27, 22030), (28, 22033), (31, 22054), (Start: 34 @22081 has 1 MA's), (39, 22156), (41, 22174), (43, 22192), (46, 22222), (47, 22234), (53, 22300), (60, 22360), (64, 22393), (68, 22417), (75, 22474), (85, 22513), (89, 22543), (90, 22549), (97, 22594), (101, 22618), (115, 22684), (123, 22747), (131, 22780), (137, 22801), (148, 22873), (150, 22900), (153, 22918),

Gene: Mandlovu_20 Start: 21912, Stop: 23021, Start Num: 5

Candidate Starts for Mandlovu_20:

(1, 21426), (Start: 3 @21816 has 1 MA's), (Start: 4 @21876 has 3 MA's), (Start: 5 @21912 has 131 MA's), (Start: 6 @21918 has 73 MA's), (18, 21984), (19, 21993), (21, 22020), (23, 22026), (25, 22044), (28, 22083), (31, 22104), (Start: 34 @22131 has 1 MA's), (35, 22149), (Start: 36 @22161 has 1 MA's), (39, 22206), (48, 22290), (53, 22350), (58, 22392), (60, 22410), (61, 22419), (64, 22443), (67, 22464), (77, 22530), (89, 22590), (98, 22647), (104, 22686), (112, 22719), (120, 22767), (138, 22857), (155, 22995),

Gene: Mantra_20 Start: 21913, Stop: 23079, Start Num: 5

Candidate Starts for Mantra_20:

(Start: 4 @21877 has 3 MA's), (Start: 5 @21913 has 131 MA's), (Start: 6 @21919 has 73 MA's), (11, 21979), (18, 22042), (19, 22051), (21, 22078), (23, 22084), (25, 22102), (28, 22141), (31, 22162), (Start: 34 @22189 has 1 MA's), (35, 22207), (Start: 36 @22219 has 1 MA's), (39, 22264), (48, 22348), (53, 22408), (60, 22468), (61, 22477), (64, 22501), (67, 22522), (77, 22588), (89, 22648), (104, 22744), (112, 22777), (120, 22825), (138, 22915), (155, 23053),

Gene: Maravista_20 Start: 21760, Stop: 22926, Start Num: 5

Candidate Starts for Maravista_20:

(Start: 3 @21664 has 1 MA's), (Start: 4 @21724 has 3 MA's), (Start: 5 @21760 has 131 MA's), (Start: 6 @21766 has 73 MA's), (11, 21826), (18, 21889), (19, 21898), (21, 21925), (23, 21931), (25, 21949), (28, 21988), (31, 22009), (Start: 34 @22036 has 1 MA's), (35, 22054), (Start: 36 @22066 has 1 MA's), (39, 22111), (48, 22195), (53, 22255), (57, 22294), (58, 22297), (60, 22315), (61, 22324), (64, 22348), (67, 22369), (77, 22435), (89, 22495), (98, 22552), (104, 22591), (112, 22624), (120, 22672), (138, 22762), (155, 22900),

Gene: Marker_21 Start: 21663, Stop: 22829, Start Num: 5

Candidate Starts for Marker_21:

(Start: 3 @21567 has 1 MA's), (Start: 4 @21627 has 3 MA's), (Start: 5 @21663 has 131 MA's), (Start: 6 @21669 has 73 MA's), (11, 21729), (18, 21792), (19, 21801), (21, 21828), (23, 21834), (25, 21852), (28, 21891), (31, 21912), (Start: 34 @21939 has 1 MA's), (35, 21957), (Start: 36 @21969 has 1 MA's), (39, 22014), (48, 22098), (53, 22158), (58, 22200), (60, 22218), (61, 22227), (64, 22251), (67, 22272), (77, 22338), (89, 22398), (98, 22455), (104, 22494), (112, 22527), (120, 22575), (138, 22665), (155, 22803),

Gene: Martik_20 Start: 21844, Stop: 23046, Start Num: 6

Candidate Starts for Martik_20:

(Start: 4 @21802 has 3 MA's), (Start: 6 @21844 has 73 MA's), (9, 21883), (14, 21940), (18, 21964), (19, 21973), (21, 22000), (22, 22003), (24, 22018), (25, 22024), (27, 22060), (29, 22066), (31, 22084), (39, 22186), (43, 22225), (45, 22249), (47, 22267), (48, 22273), (50, 22300), (51, 22309), (53, 22333), (54, 22342), (56, 22369), (59, 22387), (60, 22393), (64, 22426), (69, 22456), (70, 22459), (77, 22531), (79, 22537), (89, 22594), (91, 22603), (98, 22651), (110, 22717), (114, 22735), (126, 22810), (134, 22843), (143, 22903), (145, 22933), (148, 22948), (149, 22954), (151, 22981),

Gene: Mattes_20 Start: 21808, Stop: 23010, Start Num: 6

Candidate Starts for Mattes_20:

(Start: 4 @21766 has 3 MA's), (Start: 6 @21808 has 73 MA's), (9, 21847), (18, 21928), (19, 21937), (21, 21964), (22, 21967), (24, 21982), (25, 21988), (27, 22024), (29, 22030), (31, 22048), (39, 22150), (43, 22189), (45, 22213), (47, 22231), (48, 22237), (50, 22264), (51, 22273), (53, 22297), (54, 22306), (56, 22333), (59, 22351), (60, 22357), (64, 22390), (69, 22420), (70, 22423), (77, 22495), (79, 22501), (89, 22558), (91, 22567), (98, 22615), (110, 22681), (114, 22699), (126, 22774), (134, 22807), (143, 22867), (145, 22897), (148, 22912), (149, 22918), (151, 22945),

Gene: Medindi_20 Start: 21810, Stop: 22976, Start Num: 5

Candidate Starts for Medindi_20:

(Start: 3 @21714 has 1 MA's), (Start: 4 @21774 has 3 MA's), (Start: 5 @21810 has 131 MA's), (Start: 6 @21816 has 73 MA's), (11, 21876), (18, 21939), (19, 21948), (21, 21975), (23, 21981), (25, 21999), (28, 22038), (31, 22059), (Start: 34 @22086 has 1 MA's), (35, 22104), (Start: 36 @22116 has 1 MA's), (39, 22161), (48, 22245), (53, 22305), (58, 22347), (60, 22365), (61, 22374), (64, 22398), (67, 22419), (77, 22485), (89, 22545), (98, 22602), (104, 22641), (112, 22674), (120, 22722), (138, 22812), (145, 22869), (155, 22950),

Gene: Melissauren88_20 Start: 21851, Stop: 23011, Start Num: 6

Candidate Starts for Melissauren88_20:

(Start: 3 @21749 has 1 MA's), (Start: 4 @21809 has 3 MA's), (Start: 6 @21851 has 73 MA's), (11, 21911), (18, 21974), (19, 21983), (21, 22010), (23, 22016), (25, 22034), (28, 22073), (Start: 34 @22121 has 1 MA's), (35, 22139), (Start: 36 @22151 has 1 MA's), (39, 22196), (48, 22280), (53, 22340), (58, 22382), (60, 22400), (61, 22409), (64, 22433), (67, 22454), (77, 22520), (89, 22580), (98, 22637), (104, 22676), (112, 22709), (120, 22757), (155, 22985),

Gene: MilleniumForce_21 Start: 22634, Stop: 23794, Start Num: 6

Candidate Starts for MilleniumForce_21:

(Start: 3 @22532 has 1 MA's), (Start: 4 @22592 has 3 MA's), (Start: 6 @22634 has 73 MA's), (11, 22694), (18, 22757), (19, 22766), (21, 22793), (23, 22799), (25, 22817), (28, 22856), (Start: 34 @22904 has 1 MA's), (35, 22922), (Start: 36 @22934 has 1 MA's), (39, 22979), (48, 23063), (53, 23123), (58, 23165), (60, 23183), (64, 23216), (67, 23237), (77, 23303), (89, 23363), (98, 23420), (104, 23459), (112, 23492), (120, 23540), (155, 23768),

Gene: Minerva_41 Start: 35650, Stop: 36852, Start Num: 6

Candidate Starts for Minerva_41:

(Start: 4 @35608 has 3 MA's), (Start: 6 @35650 has 73 MA's), (9, 35689), (11, 35707), (14, 35746), (16, 35752), (17, 35764), (18, 35770), (22, 35809), (25, 35830), (27, 35866), (29, 35872), (31, 35890), (Start: 34 @35917 has 1 MA's), (35, 35935), (38, 35953), (39, 35992), (43, 36031), (45, 36055), (47, 36073), (48, 36079), (50, 36106), (53, 36139), (54, 36148), (56, 36175), (59, 36193), (60, 36199), (62, 36223), (64, 36232), (69, 36262), (70, 36265), (77, 36337), (79, 36343), (89, 36400), (91, 36409), (97, 36451), (98, 36457), (110, 36523), (114, 36541), (126, 36616), (134, 36649), (143, 36709), (145, 36739), (148, 36754), (149, 36760), (151, 36787),

Gene: MinionDave_21 Start: 22497, Stop: 23663, Start Num: 5

Candidate Starts for MinionDave_21:

(Start: 3 @22401 has 1 MA's), (Start: 4 @22461 has 3 MA's), (Start: 5 @22497 has 131 MA's), (Start: 6 @22503 has 73 MA's), (11, 22563), (18, 22626), (19, 22635), (21, 22662), (23, 22668), (25, 22686), (28, 22725), (31, 22746), (Start: 34 @22773 has 1 MA's), (35, 22791), (Start: 36 @22803 has 1 MA's), (39, 22848), (48, 22932), (53, 22992), (58, 23034), (60, 23052), (61, 23061), (64, 23085), (67, 23106), (77, 23172), (89, 23232), (98, 23289), (104, 23328), (112, 23361), (120, 23409), (138, 23499), (155, 23637),

Gene: Minnie_21 Start: 22363, Stop: 23523, Start Num: 6

Candidate Starts for Minnie_21:

(Start: 3 @22261 has 1 MA's), (Start: 4 @22321 has 3 MA's), (Start: 6 @22363 has 73 MA's), (11, 22423), (18, 22486), (19, 22495), (21, 22522), (23, 22528), (25, 22546), (28, 22585), (31, 22606), (Start: 34 @22633 has 1 MA's), (35, 22651), (Start: 36 @22663 has 1 MA's), (39, 22708), (48, 22792), (53, 22852), (58, 22894), (60, 22912), (61, 22921), (64, 22945), (67, 22966), (77, 23032), (89, 23092), (98, 23149), (104, 23188), (112, 23221), (120, 23269), (155, 23497),

Gene: Misha28_21 Start: 21678, Stop: 22850, Start Num: 6

Candidate Starts for Misha28_21:

(Start: 4 @21636 has 3 MA's), (Start: 5 @21672 has 131 MA's), (Start: 6 @21678 has 73 MA's), (11, 21738), (18, 21801), (20, 21825), (21, 21837), (23, 21843), (25, 21861), (28, 21900), (31, 21921), (Start: 34 @21948 has 1 MA's), (38, 21984), (39, 22023), (41, 22041), (43, 22059), (46, 22089), (47, 22101), (53, 22167), (60, 22227), (62, 22251), (64, 22260), (72, 22296), (75, 22341), (77, 22347), (78, 22350), (88, 22404), (89, 22410), (93, 22428), (98, 22467), (106, 22512), (107, 22515), (115, 22554), (118, 22578), (120, 22587), (122, 22596), (134, 22656), (135, 22662),

Gene: MisterCuddles_20 Start: 21788, Stop: 22954, Start Num: 5

Candidate Starts for MisterCuddles_20:

(Start: 4 @21752 has 3 MA's), (Start: 5 @21788 has 131 MA's), (Start: 6 @21794 has 73 MA's), (11, 21854), (18, 21917), (19, 21926), (21, 21953), (23, 21959), (25, 21977), (28, 22016), (31, 22037), (Start: 34 @22064 has 1 MA's), (35, 22082), (Start: 36 @22094 has 1 MA's), (39, 22139), (48, 22223), (53, 22283), (60, 22343), (61, 22352), (64, 22376), (67, 22397), (77, 22463), (89, 22523), (98, 22580), (104, 22619), (112, 22652), (120, 22700), (138, 22790), (155, 22928),

Gene: Modragons_20 Start: 22051, Stop: 23220, Start Num: 6

Candidate Starts for Modragons_20:

(Start: 4 @22009 has 3 MA's), (Start: 5 @22045 has 131 MA's), (Start: 6 @22051 has 73 MA's), (11, 22111), (18, 22174), (19, 22183), (20, 22198), (21, 22210), (23, 22216), (24, 22228), (25, 22234), (28, 22273), (31, 22294), (33, 22315), (Start: 34 @22321 has 1 MA's), (35, 22339), (Start: 36 @22351 has 1 MA's), (39, 22396), (40, 22405), (44, 22441), (46, 22462), (48, 22480), (53, 22540), (60, 22600), (64, 22633), (77, 22720), (78, 22723), (79, 22726), (89, 22780), (97, 22831), (103, 22873), (107, 22885), (113, 22912), (115, 22924), (120, 22957), (127, 23005), (133, 23023), (148, 23122),

Gene: Moonbeam_21 Start: 22306, Stop: 23472, Start Num: 5

Candidate Starts for Moonbeam_21:

(Start: 4 @22270 has 3 MA's), (Start: 5 @22306 has 131 MA's), (Start: 6 @22312 has 73 MA's), (11, 22372), (18, 22435), (19, 22444), (21, 22471), (23, 22477), (25, 22495), (28, 22534), (31, 22555), (Start: 34 @22582 has 1 MA's), (35, 22600), (Start: 36 @22612 has 1 MA's), (39, 22657), (48, 22741), (53, 22801), (58, 22843), (60, 22861), (61, 22870), (64, 22894), (67, 22915), (77, 22981), (89, 23041), (98, 23098), (104, 23137), (112, 23170), (120, 23218), (138, 23308), (145, 23365), (155, 23446),

Gene: Mova_21 Start: 21665, Stop: 22831, Start Num: 5

Candidate Starts for Mova_21:

(1, 21179), (Start: 3 @21569 has 1 MA's), (Start: 4 @21629 has 3 MA's), (Start: 5 @21665 has 131 MA's), (Start: 6 @21671 has 73 MA's), (11, 21731), (18, 21794), (19, 21803), (21, 21830), (23, 21836), (25, 21854), (28, 21893), (31, 21914), (Start: 34 @21941 has 1 MA's), (35, 21959), (Start: 36 @21971 has 1 MA's), (39, 22016), (48, 22100), (53, 22160), (58, 22202), (60, 22220), (61, 22229), (64, 22253), (67, 22274), (77, 22340), (89, 22400), (98, 22457), (104, 22496), (112, 22529), (120, 22577), (155, 22805),

Gene: Mozy_21 Start: 21715, Stop: 22881, Start Num: 5

Candidate Starts for Mozy_21:

(Start: 4 @21679 has 3 MA's), (Start: 5 @21715 has 131 MA's), (Start: 6 @21721 has 73 MA's), (11, 21781), (18, 21844), (19, 21853), (20, 21868), (21, 21880), (23, 21886), (25, 21904), (27, 21940), (28, 21943), (31, 21964), (Start: 34 @21991 has 1 MA's), (35, 22009), (39, 22066), (47, 22144), (53, 22210), (60, 22270), (67, 22324), (77, 22390), (89, 22450), (98, 22507), (104, 22546), (112, 22579), (120, 22627), (138, 22717), (155, 22855),

Gene: MulchExplorer_22 Start: 22936, Stop: 24102, Start Num: 5

Candidate Starts for MulchExplorer_22:

(Start: 3 @22840 has 1 MA's), (Start: 4 @22900 has 3 MA's), (Start: 5 @22936 has 131 MA's), (Start: 6 @22942 has 73 MA's), (11, 23002), (18, 23065), (19, 23074), (21, 23101), (23, 23107), (25, 23125), (28, 23164), (31, 23185), (Start: 34 @23212 has 1 MA's), (35, 23230), (Start: 36 @23242 has 1 MA's), (39, 23287), (48, 23371), (53, 23431), (58, 23473), (60, 23491), (61, 23500), (64, 23524), (67, 23545), (77, 23611), (89, 23671), (98, 23728), (104, 23767), (112, 23800), (120, 23848), (138, 23938), (155, 24076),

Gene: Mutaforma13_20 Start: 21861, Stop: 23027, Start Num: 5

Candidate Starts for Mutaforma13_20:

(1, 21375), (Start: 3 @21765 has 1 MA's), (Start: 4 @21825 has 3 MA's), (Start: 5 @21861 has 131 MA's), (Start: 6 @21867 has 73 MA's), (11, 21927), (18, 21990), (19, 21999), (21, 22026), (23, 22032), (25, 22050), (28, 22089), (31, 22110), (Start: 34 @22137 has 1 MA's), (35, 22155), (Start: 36 @22167 has 1 MA's), (39, 22212), (48, 22296), (53, 22356), (58, 22398), (60, 22416), (61, 22425), (64, 22449), (67, 22470), (77, 22536), (89, 22596), (98, 22653), (104, 22692), (112, 22725), (120, 22773), (138, 22863), (155, 23001),

Gene: Mwanjiwa_20 Start: 21805, Stop: 22965, Start Num: 6

Candidate Starts for Mwanjiwa_20:

(Start: 4 @21763 has 3 MA's), (Start: 5 @21799 has 131 MA's), (Start: 6 @21805 has 73 MA's), (11, 21865), (18, 21928), (19, 21937), (21, 21964), (23, 21970), (25, 21988), (28, 22027), (31, 22048), (Start: 34 @22075 has 1 MA's), (35, 22093), (Start: 36 @22105 has 1 MA's), (39, 22150), (48, 22234), (53, 22294), (58, 22336), (60, 22354), (61, 22363), (64, 22387), (67, 22408), (77, 22474), (89, 22534), (98, 22591), (104, 22630), (112, 22663), (120, 22711), (138, 22801), (155, 22939),

Gene: Nebkiss_24 Start: 24337, Stop: 25536, Start Num: 4

Candidate Starts for Nebkiss_24:

(Start: 4 @24337 has 3 MA's), (Start: 7 @24382 has 2 MA's), (9, 24421), (11, 24439), (12, 24448), (17, 24496), (18, 24502), (19, 24511), (31, 24622), (38, 24685), (39, 24724), (41, 24742), (43, 24760), (47, 24802), (48, 24808), (51, 24844), (53, 24868), (56, 24904), (60, 24928), (64, 24961), (68, 24985), (75, 25042), (76, 25045), (77, 25048), (85, 25078), (89, 25108), (91, 25117), (97, 25159), (102, 25195), (119, 25279), (131, 25345), (136, 25360), (149, 25444), (156, 25516),

Gene: NewHope4_22 Start: 22169, Stop: 23029, Start Num: 36

Candidate Starts for NewHope4_22:

(Start: 36 @22169 has 1 MA's), (39, 22214), (48, 22298), (53, 22358), (58, 22400), (60, 22418), (61, 22427), (64, 22451), (67, 22472), (77, 22538), (89, 22598), (98, 22655), (104, 22694), (112, 22727),

(120, 22775), (155, 23003),

Gene: Nichirin_20 Start: 22016, Stop: 23185, Start Num: 6

Candidate Starts for Nichirin_20:

(Start: 3 @21914 has 1 MA's), (Start: 4 @21974 has 3 MA's), (Start: 5 @22010 has 131 MA's), (Start: 6 @22016 has 73 MA's), (11, 22076), (18, 22139), (20, 22163), (21, 22175), (23, 22181), (25, 22199), (28, 22238), (31, 22259), (Start: 34 @22286 has 1 MA's), (35, 22304), (Start: 36 @22316 has 1 MA's), (38, 22322), (39, 22361), (48, 22445), (53, 22505), (58, 22547), (60, 22565), (64, 22598), (72, 22634), (77, 22685), (78, 22688), (79, 22691), (89, 22745), (97, 22796), (103, 22838), (107, 22850), (113, 22877), (115, 22889), (120, 22922), (127, 22970), (133, 22988), (148, 23087),

Gene: Nimbo_20 Start: 21820, Stop: 22983, Start Num: 5

Candidate Starts for Nimbo_20:

(Start: 4 @21784 has 3 MA's), (Start: 5 @21820 has 131 MA's), (Start: 6 @21826 has 73 MA's), (11, 21886), (17, 21943), (18, 21949), (20, 21973), (23, 21991), (25, 22009), (28, 22048), (31, 22069), (Start: 34 @22096 has 1 MA's), (35, 22114), (38, 22132), (39, 22171), (48, 22255), (53, 22315), (60, 22375), (62, 22399), (63, 22402), (87, 22537), (89, 22558), (91, 22567), (98, 22615), (105, 22657), (112, 22684), (117, 22714), (148, 22900), (152, 22933), (155, 22966),

Gene: Nitzel_21 Start: 22547, Stop: 23713, Start Num: 5

Candidate Starts for Nitzel_21:

(Start: 4 @22511 has 3 MA's), (Start: 5 @22547 has 131 MA's), (Start: 6 @22553 has 73 MA's), (11, 22613), (18, 22676), (20, 22700), (21, 22712), (23, 22718), (25, 22736), (28, 22775), (31, 22796), (Start: 34 @22823 has 1 MA's), (35, 22841), (Start: 36 @22853 has 1 MA's), (39, 22898), (44, 22943), (48, 22982), (53, 23042), (60, 23102), (61, 23111), (64, 23135), (68, 23159), (76, 23219), (80, 23228), (82, 23231), (85, 23255), (86, 23258), (88, 23279), (89, 23285), (97, 23336), (98, 23342), (115, 23426), (124, 23489), (131, 23522), (133, 23525), (134, 23528), (137, 23543), (148, 23615), (149, 23621),

Gene: Nivrat_20 Start: 21816, Stop: 23018, Start Num: 6

Candidate Starts for Nivrat_20:

(Start: 4 @21774 has 3 MA's), (Start: 6 @21816 has 73 MA's), (9, 21855), (18, 21936), (19, 21945), (21, 21972), (22, 21975), (24, 21990), (25, 21996), (27, 22032), (29, 22038), (31, 22056), (39, 22158), (43, 22197), (45, 22221), (47, 22239), (48, 22245), (50, 22272), (51, 22281), (53, 22305), (54, 22314), (56, 22341), (59, 22359), (60, 22365), (64, 22398), (69, 22428), (70, 22431), (77, 22503), (79, 22509), (89, 22566), (91, 22575), (98, 22623), (110, 22689), (114, 22707), (126, 22782), (134, 22815), (143, 22875), (145, 22905), (148, 22920), (149, 22926), (151, 22953),

Gene: NormanBulbieJr_20 Start: 21831, Stop: 23033, Start Num: 6

Candidate Starts for NormanBulbieJr_20:

(Start: 4 @21789 has 3 MA's), (Start: 6 @21831 has 73 MA's), (9, 21870), (14, 21927), (18, 21951), (19, 21960), (21, 21987), (22, 21990), (24, 22005), (25, 22011), (27, 22047), (29, 22053), (31, 22071), (39, 22173), (43, 22212), (45, 22236), (47, 22254), (48, 22260), (50, 22287), (51, 22296), (53, 22320), (54, 22329), (56, 22356), (59, 22374), (60, 22380), (64, 22413), (69, 22443), (70, 22446), (77, 22518), (79, 22524), (89, 22581), (91, 22590), (98, 22638), (110, 22704), (114, 22722), (126, 22797), (134, 22830), (143, 22890), (145, 22920), (148, 22935), (149, 22941), (151, 22968),

Gene: Ochi17_20 Start: 22051, Stop: 23220, Start Num: 6

Candidate Starts for Ochi17_20:

(Start: 4 @22009 has 3 MA's), (Start: 5 @22045 has 131 MA's), (Start: 6 @22051 has 73 MA's), (11, 22111), (18, 22174), (19, 22183), (20, 22198), (21, 22210), (23, 22216), (24, 22228), (25, 22234), (28, 22273), (31, 22294), (33, 22315), (Start: 34 @22321 has 1 MA's), (35, 22339), (Start: 36 @22351 has 1 MA's), (39, 22396), (40, 22405), (44, 22441), (46, 22462), (48, 22480), (53, 22540), (60, 22600), (64, 22633), (77, 22720), (78, 22723), (79, 22726), (89, 22780), (97, 22831), (103, 22873), (107, 22885),

(113, 22912), (115, 22924), (120, 22957), (127, 23005), (133, 23023), (148, 23122),

Gene: OfUltron_20 Start: 22045, Stop: 23220, Start Num: 5

Candidate Starts for OfUltron_20:

(Start: 4 @22009 has 3 MA's), (Start: 5 @22045 has 131 MA's), (Start: 6 @22051 has 73 MA's), (11, 22111), (18, 22174), (19, 22183), (20, 22198), (21, 22210), (23, 22216), (24, 22228), (25, 22234), (28, 22273), (31, 22294), (33, 22315), (Start: 34 @22321 has 1 MA's), (35, 22339), (Start: 36 @22351 has 1 MA's), (39, 22396), (40, 22405), (44, 22441), (46, 22462), (48, 22480), (53, 22540), (60, 22600), (64, 22633), (77, 22720), (78, 22723), (79, 22726), (89, 22780), (97, 22831), (103, 22873), (107, 22885), (113, 22912), (115, 22924), (120, 22957), (127, 23005), (133, 23023), (148, 23122),

Gene: Oksu_21 Start: 21890, Stop: 23065, Start Num: 5

Candidate Starts for Oksu_21:

(Start: 4 @21854 has 3 MA's), (Start: 5 @21890 has 131 MA's), (Start: 6 @21896 has 73 MA's), (11, 21956), (18, 22019), (19, 22028), (20, 22043), (21, 22055), (23, 22061), (24, 22073), (25, 22079), (28, 22118), (31, 22139), (33, 22160), (Start: 34 @22166 has 1 MA's), (35, 22184), (Start: 36 @22196 has 1 MA's), (39, 22241), (40, 22250), (44, 22286), (46, 22307), (48, 22325), (53, 22385), (60, 22445), (64, 22478), (72, 22514), (78, 22568), (79, 22571), (89, 22625), (97, 22676), (103, 22718), (107, 22730), (113, 22757), (115, 22769), (120, 22802), (127, 22850), (133, 22868), (148, 22967),

Gene: OldBen_20 Start: 21790, Stop: 22953, Start Num: 5

Candidate Starts for OldBen_20:

(Start: 4 @21754 has 3 MA's), (Start: 5 @21790 has 131 MA's), (Start: 6 @21796 has 73 MA's), (11, 21856), (14, 21895), (17, 21913), (18, 21919), (19, 21928), (20, 21943), (23, 21961), (25, 21979), (31, 22039), (Start: 34 @22066 has 1 MA's), (35, 22084), (Start: 36 @22096 has 1 MA's), (39, 22141), (41, 22159), (48, 22225), (53, 22285), (60, 22345), (62, 22369), (63, 22372), (87, 22507), (89, 22528), (90, 22534), (91, 22537), (98, 22585), (100, 22594), (105, 22627), (112, 22654), (117, 22684), (131, 22768), (148, 22870), (152, 22903), (155, 22936),

Gene: OlympiaSaint_20 Start: 22031, Stop: 23233, Start Num: 6

Candidate Starts for OlympiaSaint_20:

(Start: 4 @21989 has 3 MA's), (Start: 6 @22031 has 73 MA's), (9, 22070), (14, 22127), (18, 22151), (19, 22160), (21, 22187), (22, 22190), (24, 22205), (25, 22211), (27, 22247), (29, 22253), (31, 22271), (39, 22373), (43, 22412), (45, 22436), (47, 22454), (48, 22460), (50, 22487), (51, 22496), (53, 22520), (54, 22529), (56, 22556), (59, 22574), (60, 22580), (64, 22613), (69, 22643), (70, 22646), (77, 22718), (79, 22724), (89, 22781), (91, 22790), (98, 22838), (110, 22904), (114, 22922), (126, 22997), (134, 23030), (143, 23090), (145, 23120), (148, 23135), (149, 23141), (151, 23168),

Gene: Omega_40 Start: 35872, Stop: 37032, Start Num: 6

Candidate Starts for Omega_40:

(Start: 4 @35830 has 3 MA's), (Start: 5 @35866 has 131 MA's), (Start: 6 @35872 has 73 MA's), (11, 35932), (18, 35995), (19, 36004), (21, 36031), (23, 36037), (25, 36055), (28, 36094), (31, 36115), (Start: 34 @36142 has 1 MA's), (35, 36160), (Start: 36 @36172 has 1 MA's), (39, 36217), (48, 36301), (53, 36361), (58, 36403), (60, 36421), (61, 36430), (64, 36454), (67, 36475), (77, 36541), (89, 36601), (98, 36658), (104, 36697), (112, 36730), (120, 36778), (155, 37006),

Gene: Optimus_39 Start: 35216, Stop: 36376, Start Num: 6

Candidate Starts for Optimus_39:

(1, 34724), (Start: 3 @35114 has 1 MA's), (Start: 4 @35174 has 3 MA's), (Start: 6 @35216 has 73 MA's), (11, 35276), (18, 35339), (19, 35348), (21, 35375), (23, 35381), (25, 35399), (28, 35438), (Start: 34 @35486 has 1 MA's), (35, 35504), (Start: 36 @35516 has 1 MA's), (39, 35561), (48, 35645), (53, 35705), (58, 35747), (60, 35765), (61, 35774), (64, 35798), (67, 35819), (77, 35885), (89, 35945), (98, 36002), (104, 36041), (112, 36074), (120, 36122), (138, 36212), (155, 36350),

Gene: Ovechkin_20 Start: 21850, Stop: 23010, Start Num: 6

Candidate Starts for Ovechkin_20:

(1, 21358), (Start: 3 @21748 has 1 MA's), (Start: 4 @21808 has 3 MA's), (Start: 6 @21850 has 73 MA's), (11, 21910), (18, 21973), (19, 21982), (21, 22009), (23, 22015), (25, 22033), (28, 22072), (Start: 34 @22120 has 1 MA's), (35, 22138), (Start: 36 @22150 has 1 MA's), (39, 22195), (48, 22279), (53, 22339), (58, 22381), (60, 22399), (64, 22432), (67, 22453), (77, 22519), (89, 22579), (98, 22636), (104, 22675), (112, 22708), (120, 22756), (155, 22984),

Gene: OwlsT2W_22 Start: 22203, Stop: 23405, Start Num: 6

Candidate Starts for OwlsT2W_22:

(Start: 4 @22161 has 3 MA's), (Start: 6 @22203 has 73 MA's), (9, 22242), (14, 22299), (17, 22317), (18, 22323), (19, 22332), (22, 22362), (25, 22383), (27, 22419), (29, 22425), (31, 22443), (38, 22506), (39, 22545), (43, 22584), (45, 22608), (47, 22626), (48, 22632), (50, 22659), (53, 22692), (54, 22701), (56, 22728), (59, 22746), (60, 22752), (62, 22776), (64, 22785), (69, 22815), (70, 22818), (77, 22890), (79, 22896), (89, 22953), (91, 22962), (97, 23004), (98, 23010), (110, 23076), (114, 23094), (126, 23169), (134, 23202), (143, 23262), (145, 23292), (148, 23307), (149, 23313), (151, 23340),

Gene: PHappiness_20 Start: 21798, Stop: 22961, Start Num: 5

Candidate Starts for PHappiness_20:

(Start: 4 @21762 has 3 MA's), (Start: 5 @21798 has 131 MA's), (Start: 6 @21804 has 73 MA's), (11, 21864), (14, 21903), (17, 21921), (18, 21927), (19, 21936), (20, 21951), (23, 21969), (25, 21987), (31, 22047), (Start: 34 @22074 has 1 MA's), (35, 22092), (Start: 36 @22104 has 1 MA's), (39, 22149), (41, 22167), (48, 22233), (53, 22293), (60, 22353), (62, 22377), (63, 22380), (87, 22515), (89, 22536), (90, 22542), (91, 22545), (98, 22593), (100, 22602), (105, 22635), (112, 22662), (117, 22692), (131, 22776), (148, 22878), (152, 22911), (155, 22944),

Gene: PMC_20 Start: 21800, Stop: 22966, Start Num: 5

Candidate Starts for PMC_20:

(1, 21314), (Start: 3 @21704 has 1 MA's), (Start: 4 @21764 has 3 MA's), (Start: 5 @21800 has 131 MA's), (Start: 6 @21806 has 73 MA's), (11, 21866), (18, 21929), (19, 21938), (21, 21965), (23, 21971), (25, 21989), (28, 22028), (31, 22049), (Start: 34 @22076 has 1 MA's), (35, 22094), (Start: 36 @22106 has 1 MA's), (39, 22151), (48, 22235), (53, 22295), (57, 22334), (58, 22337), (60, 22355), (61, 22364), (64, 22388), (67, 22409), (77, 22475), (89, 22535), (98, 22592), (104, 22631), (112, 22664), (120, 22712), (138, 22802), (155, 22940),

Gene: Pacc40_20 Start: 21988, Stop: 23151, Start Num: 5

Candidate Starts for Pacc40_20:

(Start: 4 @21952 has 3 MA's), (Start: 5 @21988 has 131 MA's), (Start: 6 @21994 has 73 MA's), (11, 22054), (14, 22093), (17, 22111), (18, 22117), (19, 22126), (20, 22141), (23, 22159), (25, 22177), (31, 22237), (Start: 34 @22264 has 1 MA's), (35, 22282), (Start: 36 @22294 has 1 MA's), (39, 22339), (41, 22357), (48, 22423), (53, 22483), (60, 22543), (62, 22567), (63, 22570), (87, 22705), (89, 22726), (90, 22732), (91, 22735), (98, 22783), (100, 22792), (105, 22825), (112, 22852), (117, 22882), (131, 22966), (148, 23068), (152, 23101), (155, 23134),

Gene: PatoPoderoso_20 Start: 21854, Stop: 23020, Start Num: 5

Candidate Starts for PatoPoderoso_20:

(Start: 3 @21758 has 1 MA's), (Start: 4 @21818 has 3 MA's), (Start: 5 @21854 has 131 MA's), (Start: 6 @21860 has 73 MA's), (11, 21920), (18, 21983), (19, 21992), (21, 22019), (23, 22025), (25, 22043), (28, 22082), (31, 22103), (Start: 34 @22130 has 1 MA's), (35, 22148), (Start: 36 @22160 has 1 MA's), (39, 22205), (48, 22289), (53, 22349), (58, 22391), (60, 22409), (61, 22418), (64, 22442), (67, 22463), (77, 22529), (89, 22589), (98, 22646), (104, 22685), (112, 22718), (120, 22766), (138, 22856), (155, 22994),

Gene: Peridot_22 Start: 21626, Stop: 22792, Start Num: 5

Candidate Starts for Peridot_22:

(Start: 4 @21590 has 3 MA's), (Start: 5 @21626 has 131 MA's), (Start: 6 @21632 has 73 MA's), (11, 21692), (18, 21755), (19, 21764), (21, 21791), (23, 21797), (25, 21815), (28, 21854), (31, 21875), (Start: 34 @21902 has 1 MA's), (35, 21920), (Start: 36 @21932 has 1 MA's), (39, 21977), (48, 22061), (53, 22121), (57, 22160), (58, 22163), (60, 22181), (61, 22190), (64, 22214), (67, 22235), (77, 22301), (89, 22361), (98, 22418), (104, 22457), (112, 22490), (120, 22538), (138, 22628), (155, 22766),

Gene: Phalconet_20 Start: 21865, Stop: 23025, Start Num: 6

Candidate Starts for Phalconet_20:

(1, 21373), (Start: 3 @21763 has 1 MA's), (Start: 4 @21823 has 3 MA's), (Start: 6 @21865 has 73 MA's), (11, 21925), (18, 21988), (19, 21997), (21, 22024), (23, 22030), (25, 22048), (28, 22087), (31, 22108), (Start: 34 @22135 has 1 MA's), (35, 22153), (Start: 36 @22165 has 1 MA's), (39, 22210), (48, 22294), (53, 22354), (58, 22396), (60, 22414), (61, 22423), (64, 22447), (67, 22468), (77, 22534), (89, 22594), (98, 22651), (104, 22690), (112, 22723), (120, 22771), (138, 22861), (145, 22918), (155, 22999),

Gene: Phasih_21 Start: 22356, Stop: 23522, Start Num: 5

Candidate Starts for Phasih_21:

(Start: 4 @22320 has 3 MA's), (Start: 5 @22356 has 131 MA's), (Start: 6 @22362 has 73 MA's), (11, 22422), (18, 22485), (19, 22494), (21, 22521), (23, 22527), (25, 22545), (28, 22584), (31, 22605), (Start: 34 @22632 has 1 MA's), (35, 22650), (Start: 36 @22662 has 1 MA's), (39, 22707), (48, 22791), (53, 22851), (60, 22911), (61, 22920), (64, 22944), (67, 22965), (77, 23031), (89, 23091), (104, 23187), (112, 23220), (120, 23268), (138, 23358), (155, 23496),

Gene: Phatniss_21 Start: 22324, Stop: 23484, Start Num: 6

Candidate Starts for Phatniss_21:

(Start: 3 @22222 has 1 MA's), (Start: 4 @22282 has 3 MA's), (Start: 5 @22318 has 131 MA's), (Start: 6 @22324 has 73 MA's), (11, 22384), (18, 22447), (19, 22456), (21, 22483), (23, 22489), (25, 22507), (28, 22546), (31, 22567), (Start: 34 @22594 has 1 MA's), (35, 22612), (Start: 36 @22624 has 1 MA's), (39, 22669), (48, 22753), (53, 22813), (57, 22852), (58, 22855), (60, 22873), (61, 22882), (64, 22906), (67, 22927), (77, 22993), (89, 23053), (98, 23110), (104, 23149), (112, 23182), (120, 23230), (138, 23320), (155, 23458),

Gene: PhesterPhotato_20 Start: 21836, Stop: 23002, Start Num: 5

Candidate Starts for PhesterPhotato_20:

(Start: 4 @21800 has 3 MA's), (Start: 5 @21836 has 131 MA's), (Start: 6 @21842 has 73 MA's), (11, 21902), (18, 21965), (19, 21974), (21, 22001), (23, 22007), (25, 22025), (28, 22064), (31, 22085), (Start: 34 @22112 has 1 MA's), (35, 22130), (Start: 36 @22142 has 1 MA's), (39, 22187), (48, 22271), (53, 22331), (58, 22373), (60, 22391), (61, 22400), (64, 22424), (67, 22445), (77, 22511), (89, 22571), (98, 22628), (104, 22667), (112, 22700), (120, 22748), (138, 22838), (145, 22895), (155, 22976),

Gene: Philus_20 Start: 21822, Stop: 22985, Start Num: 5

Candidate Starts for Philus_20:

(Start: 4 @21786 has 3 MA's), (Start: 5 @21822 has 131 MA's), (Start: 6 @21828 has 73 MA's), (11, 21888), (17, 21945), (18, 21951), (20, 21975), (23, 21993), (25, 22011), (28, 22050), (31, 22071), (Start: 34 @22098 has 1 MA's), (35, 22116), (38, 22134), (39, 22173), (48, 22257), (53, 22317), (60, 22377), (62, 22401), (63, 22404), (87, 22539), (89, 22560), (91, 22569), (98, 22617), (105, 22659), (112, 22686), (117, 22716), (131, 22800), (148, 22902), (152, 22935), (155, 22968),

Gene: PhlipPhlop_20 Start: 21769, Stop: 22935, Start Num: 5

Candidate Starts for PhlipPhlop_20:

(Start: 4 @21733 has 3 MA's), (Start: 5 @21769 has 131 MA's), (Start: 6 @21775 has 73 MA's), (11, 21835), (18, 21898), (19, 21907), (21, 21934), (23, 21940), (25, 21958), (28, 21997), (31, 22018), (Start: 34 @22045 has 1 MA's), (35, 22063), (Start: 36 @22075 has 1 MA's), (39, 22120), (48, 22204), (53, 22264), (57, 22303), (58, 22306), (60, 22324), (61, 22333), (64, 22357), (67, 22378), (77, 22444), (89, 22504), (98, 22561), (104, 22600), (112, 22633), (120, 22681), (138, 22771), (155, 22909),

Gene: Piper2020_21 Start: 21669, Stop: 22847, Start Num: 5

Candidate Starts for Piper2020_21:

(Start: 4 @21633 has 3 MA's), (Start: 5 @21669 has 131 MA's), (Start: 6 @21675 has 73 MA's), (11, 21735), (18, 21798), (20, 21822), (21, 21834), (23, 21840), (25, 21858), (28, 21897), (31, 21918), (Start: 34 @21945 has 1 MA's), (38, 21981), (39, 22020), (41, 22038), (43, 22056), (46, 22086), (47, 22098), (53, 22164), (60, 22224), (62, 22248), (64, 22257), (72, 22293), (75, 22338), (77, 22344), (78, 22347), (88, 22401), (89, 22407), (93, 22425), (98, 22464), (106, 22509), (107, 22512), (115, 22551), (118, 22575), (120, 22584), (122, 22593), (134, 22653), (135, 22659), (156, 22827),

Gene: Plumbus_21 Start: 21643, Stop: 22809, Start Num: 5

Candidate Starts for Plumbus_21:

(Start: 4 @21607 has 3 MA's), (Start: 5 @21643 has 131 MA's), (Start: 6 @21649 has 73 MA's), (11, 21709), (18, 21772), (19, 21781), (21, 21808), (23, 21814), (25, 21832), (28, 21871), (31, 21892), (Start: 34 @21919 has 1 MA's), (35, 21937), (Start: 36 @21949 has 1 MA's), (39, 21994), (48, 22078), (53, 22138), (58, 22180), (60, 22198), (61, 22207), (64, 22231), (67, 22252), (77, 22318), (89, 22378), (98, 22435), (104, 22474), (112, 22507), (120, 22555), (138, 22645), (155, 22783),

Gene: Poenanya_20 Start: 21957, Stop: 23117, Start Num: 6

Candidate Starts for Poenanya_20:

(1, 21465), (Start: 3 @21855 has 1 MA's), (Start: 4 @21915 has 3 MA's), (Start: 6 @21957 has 73 MA's), (11, 22017), (18, 22080), (19, 22089), (21, 22116), (23, 22122), (25, 22140), (28, 22179), (31, 22200), (Start: 34 @22227 has 1 MA's), (35, 22245), (Start: 36 @22257 has 1 MA's), (39, 22302), (48, 22386), (53, 22446), (58, 22488), (60, 22506), (64, 22539), (67, 22560), (77, 22626), (89, 22686), (98, 22743), (104, 22782), (112, 22815), (120, 22863), (155, 23091),

Gene: Polka14_21 Start: 22360, Stop: 23523, Start Num: 5

Candidate Starts for Polka14_21:

(Start: 4 @22324 has 3 MA's), (Start: 5 @22360 has 131 MA's), (Start: 6 @22366 has 73 MA's), (11, 22426), (14, 22465), (17, 22483), (18, 22489), (19, 22498), (20, 22513), (23, 22531), (25, 22549), (31, 22609), (Start: 34 @22636 has 1 MA's), (35, 22654), (Start: 36 @22666 has 1 MA's), (39, 22711), (41, 22729), (48, 22795), (53, 22855), (60, 22915), (62, 22939), (63, 22942), (87, 23077), (89, 23098), (90, 23104), (91, 23107), (98, 23155), (100, 23164), (105, 23197), (112, 23224), (117, 23254), (131, 23338), (148, 23440), (152, 23473), (155, 23506),

Gene: Polo2Bam_22 Start: 21863, Stop: 23029, Start Num: 5

Candidate Starts for Polo2Bam_22:

(Start: 4 @21827 has 3 MA's), (Start: 5 @21863 has 131 MA's), (Start: 6 @21869 has 73 MA's), (11, 21929), (18, 21992), (19, 22001), (21, 22028), (23, 22034), (25, 22052), (28, 22091), (31, 22112), (Start: 34 @22139 has 1 MA's), (35, 22157), (Start: 36 @22169 has 1 MA's), (39, 22214), (48, 22298), (53, 22358), (58, 22400), (60, 22418), (61, 22427), (64, 22451), (67, 22472), (77, 22538), (89, 22598), (98, 22655), (104, 22694), (112, 22727), (120, 22775), (155, 23003),

Gene: PopTart_20 Start: 21862, Stop: 23028, Start Num: 5

Candidate Starts for PopTart_20:

(1, 21376), (Start: 3 @21766 has 1 MA's), (Start: 4 @21826 has 3 MA's), (Start: 5 @21862 has 131 MA's), (Start: 6 @21868 has 73 MA's), (11, 21928), (17, 21985), (18, 21991), (19, 22000), (20, 22015), (23, 22033), (25, 22051), (27, 22087), (28, 22090), (31, 22111), (Start: 34 @22138 has 1 MA's), (39,

22213), (47, 22291), (53, 22357), (60, 22417), (67, 22471), (77, 22537), (89, 22597), (94, 22618), (98, 22654), (112, 22726), (120, 22774), (125, 22810), (138, 22864), (145, 22921), (155, 23002),

Gene: Priscilla_20 Start: 21845, Stop: 23047, Start Num: 6

Candidate Starts for Priscilla_20:

(Start: 4 @21803 has 3 MA's), (Start: 6 @21845 has 73 MA's), (9, 21884), (14, 21941), (18, 21965), (19, 21974), (21, 22001), (22, 22004), (24, 22019), (25, 22025), (27, 22061), (29, 22067), (31, 22085), (39, 22187), (43, 22226), (45, 22250), (47, 22268), (48, 22274), (50, 22301), (51, 22310), (53, 22334), (54, 22343), (56, 22370), (59, 22388), (60, 22394), (64, 22427), (69, 22457), (70, 22460), (77, 22532), (79, 22538), (89, 22595), (91, 22604), (98, 22652), (110, 22718), (114, 22736), (126, 22811), (134, 22844), (143, 22904), (145, 22934), (148, 22949), (149, 22955), (151, 22982),

Gene: QuickMath_21 Start: 23160, Stop: 24326, Start Num: 5

Candidate Starts for QuickMath_21:

(Start: 3 @23064 has 1 MA's), (Start: 4 @23124 has 3 MA's), (Start: 5 @23160 has 131 MA's), (Start: 6 @23166 has 73 MA's), (11, 23226), (18, 23289), (19, 23298), (21, 23325), (23, 23331), (25, 23349), (28, 23388), (31, 23409), (Start: 34 @23436 has 1 MA's), (35, 23454), (Start: 36 @23466 has 1 MA's), (39, 23511), (48, 23595), (53, 23655), (58, 23697), (60, 23715), (61, 23724), (64, 23748), (67, 23769), (77, 23835), (89, 23895), (98, 23952), (104, 23991), (112, 24024), (120, 24072), (138, 24162), (155, 24300),

Gene: Quico_21 Start: 21644, Stop: 22807, Start Num: 5

Candidate Starts for Quico_21:

(Start: 4 @21608 has 3 MA's), (Start: 5 @21644 has 131 MA's), (Start: 6 @21650 has 73 MA's), (11, 21710), (17, 21767), (18, 21773), (20, 21797), (23, 21815), (25, 21833), (28, 21872), (31, 21893), (Start: 34 @21920 has 1 MA's), (35, 21938), (38, 21956), (39, 21995), (48, 22079), (53, 22139), (60, 22199), (62, 22223), (63, 22226), (87, 22361), (89, 22382), (91, 22391), (98, 22439), (105, 22481), (112, 22508), (117, 22538), (131, 22622), (148, 22724), (152, 22757), (155, 22790),

Gene: Radiance_20 Start: 21797, Stop: 22963, Start Num: 5

Candidate Starts for Radiance_20:

(Start: 3 @21701 has 1 MA's), (Start: 4 @21761 has 3 MA's), (Start: 5 @21797 has 131 MA's), (Start: 6 @21803 has 73 MA's), (11, 21863), (18, 21926), (19, 21935), (21, 21962), (23, 21968), (25, 21986), (28, 22025), (31, 22046), (Start: 34 @22073 has 1 MA's), (35, 22091), (Start: 36 @22103 has 1 MA's), (39, 22148), (48, 22232), (53, 22292), (58, 22334), (60, 22352), (61, 22361), (64, 22385), (67, 22406), (77, 22472), (89, 22532), (98, 22589), (104, 22628), (112, 22661), (120, 22709), (138, 22799), (155, 22937),

Gene: Ramsey_21 Start: 21852, Stop: 23012, Start Num: 6

Candidate Starts for Ramsey_21:

(1, 21360), (Start: 3 @21750 has 1 MA's), (Start: 4 @21810 has 3 MA's), (Start: 6 @21852 has 73 MA's), (11, 21912), (18, 21975), (19, 21984), (21, 22011), (23, 22017), (25, 22035), (28, 22074), (Start: 34 @22122 has 1 MA's), (35, 22140), (Start: 36 @22152 has 1 MA's), (39, 22197), (48, 22281), (53, 22341), (57, 22380), (58, 22383), (60, 22401), (61, 22410), (64, 22434), (67, 22455), (77, 22521), (89, 22581), (98, 22638), (104, 22677), (112, 22710), (120, 22758), (138, 22848), (155, 22986),

Gene: RedBird_20 Start: 21678, Stop: 22940, Start Num: 3

Candidate Starts for RedBird_20:

(Start: 3 @21678 has 1 MA's), (Start: 4 @21738 has 3 MA's), (Start: 5 @21774 has 131 MA's), (Start: 6 @21780 has 73 MA's), (11, 21840), (18, 21903), (19, 21912), (21, 21939), (23, 21945), (25, 21963), (28, 22002), (Start: 34 @22050 has 1 MA's), (35, 22068), (Start: 36 @22080 has 1 MA's), (39, 22125), (48, 22209), (53, 22269), (57, 22308), (58, 22311), (60, 22329), (61, 22338), (64, 22362), (67, 22383), (77, 22449), (89, 22509), (98, 22566), (104, 22605), (112, 22638), (120, 22686), (138, 22776), (155,

22914),

Gene: Rialto_22 Start: 22326, Stop: 23492, Start Num: 5

Candidate Starts for Rialto_22:

(Start: 4 @22290 has 3 MA's), (Start: 5 @22326 has 131 MA's), (Start: 6 @22332 has 73 MA's), (11, 22392), (18, 22455), (19, 22464), (21, 22491), (23, 22497), (25, 22515), (28, 22554), (31, 22575), (Start: 34 @22602 has 1 MA's), (35, 22620), (Start: 36 @22632 has 1 MA's), (39, 22677), (48, 22761), (53, 22821), (57, 22860), (58, 22863), (60, 22881), (61, 22890), (64, 22914), (67, 22935), (77, 23001), (89, 23061), (98, 23118), (104, 23157), (112, 23190), (120, 23238), (138, 23328), (155, 23466),

Gene: Rita_20 Start: 21827, Stop: 22993, Start Num: 5

Candidate Starts for Rita_20:

(Start: 3 @21731 has 1 MA's), (Start: 4 @21791 has 3 MA's), (Start: 5 @21827 has 131 MA's), (Start: 6 @21833 has 73 MA's), (11, 21893), (18, 21956), (19, 21965), (21, 21992), (23, 21998), (25, 22016), (28, 22055), (31, 22076), (Start: 34 @22103 has 1 MA's), (35, 22121), (Start: 36 @22133 has 1 MA's), (39, 22178), (48, 22262), (53, 22322), (57, 22361), (58, 22364), (60, 22382), (61, 22391), (64, 22415), (67, 22436), (77, 22502), (89, 22562), (98, 22619), (104, 22658), (112, 22691), (120, 22739), (138, 22829), (155, 22967),

Gene: RitaG_20 Start: 21977, Stop: 23179, Start Num: 6

Candidate Starts for RitaG_20:

(Start: 4 @21935 has 3 MA's), (Start: 6 @21977 has 73 MA's), (9, 22016), (11, 22034), (14, 22073), (16, 22079), (17, 22091), (18, 22097), (25, 22157), (27, 22193), (29, 22199), (31, 22217), (39, 22319), (43, 22358), (45, 22382), (47, 22400), (48, 22406), (50, 22433), (53, 22466), (54, 22475), (56, 22502), (59, 22520), (60, 22526), (64, 22559), (69, 22589), (70, 22592), (77, 22664), (79, 22670), (89, 22727), (91, 22736), (98, 22784), (110, 22850), (114, 22868), (126, 22943), (134, 22976), (143, 23036), (145, 23066), (148, 23081), (149, 23087), (151, 23114),

Gene: Rockne_20 Start: 21800, Stop: 22966, Start Num: 5

Candidate Starts for Rockne_20:

(1, 21314), (Start: 3 @21704 has 1 MA's), (Start: 4 @21764 has 3 MA's), (Start: 5 @21800 has 131 MA's), (Start: 6 @21806 has 73 MA's), (11, 21866), (18, 21929), (19, 21938), (21, 21965), (23, 21971), (25, 21989), (28, 22028), (31, 22049), (Start: 34 @22076 has 1 MA's), (35, 22094), (Start: 36 @22106 has 1 MA's), (39, 22151), (48, 22235), (53, 22295), (57, 22334), (58, 22337), (60, 22355), (61, 22364), (64, 22388), (67, 22409), (77, 22475), (89, 22535), (98, 22592), (104, 22631), (112, 22664), (120, 22712), (138, 22802), (155, 22940),

Gene: RockyHorror_21 Start: 21678, Stop: 22841, Start Num: 5

Candidate Starts for RockyHorror_21:

(Start: 4 @21642 has 3 MA's), (Start: 5 @21678 has 131 MA's), (Start: 6 @21684 has 73 MA's), (11, 21744), (14, 21783), (17, 21801), (18, 21807), (19, 21816), (20, 21831), (23, 21849), (25, 21867), (31, 21927), (Start: 34 @21954 has 1 MA's), (35, 21972), (Start: 36 @21984 has 1 MA's), (39, 22029), (41, 22047), (48, 22113), (53, 22173), (60, 22233), (62, 22257), (63, 22260), (87, 22395), (89, 22416), (91, 22425), (98, 22473), (105, 22515), (112, 22542), (117, 22572), (148, 22758), (152, 22791), (155, 22824),

Gene: Royals2015_20 Start: 21834, Stop: 23036, Start Num: 6

Candidate Starts for Royals2015_20:

(Start: 4 @21792 has 3 MA's), (Start: 6 @21834 has 73 MA's), (9, 21873), (17, 21948), (18, 21954), (19, 21963), (22, 21993), (25, 22014), (27, 22050), (29, 22056), (31, 22074), (38, 22137), (39, 22176), (43, 22215), (45, 22239), (47, 22257), (48, 22263), (50, 22290), (53, 22323), (54, 22332), (56, 22359), (59, 22377), (60, 22383), (64, 22416), (69, 22446), (70, 22449), (77, 22521), (79, 22527), (89, 22584), (91, 22593), (97, 22635), (98, 22641), (110, 22707), (126, 22800), (134, 22833), (139, 22866), (143,

22893), (145, 22923), (148, 22938), (149, 22944), (151, 22971),

Gene: Ruby_20 Start: 21788, Stop: 22954, Start Num: 5

Candidate Starts for Ruby_20:

(Start: 4 @21752 has 3 MA's), (Start: 5 @21788 has 131 MA's), (Start: 6 @21794 has 73 MA's), (11, 21854), (18, 21917), (19, 21926), (21, 21953), (23, 21959), (25, 21977), (28, 22016), (31, 22037), (Start: 34 @22064 has 1 MA's), (35, 22082), (Start: 36 @22094 has 1 MA's), (39, 22139), (48, 22223), (53, 22283), (60, 22343), (61, 22352), (64, 22376), (67, 22397), (77, 22463), (89, 22523), (98, 22580), (104, 22619), (112, 22652), (120, 22700), (138, 22790), (155, 22928),

Gene: SG4_20 Start: 21965, Stop: 23131, Start Num: 5

Candidate Starts for SG4_20:

(Start: 3 @21869 has 1 MA's), (Start: 4 @21929 has 3 MA's), (Start: 5 @21965 has 131 MA's), (Start: 6 @21971 has 73 MA's), (11, 22031), (18, 22094), (19, 22103), (21, 22130), (23, 22136), (25, 22154), (28, 22193), (31, 22214), (Start: 34 @22241 has 1 MA's), (35, 22259), (Start: 36 @22271 has 1 MA's), (39, 22316), (48, 22400), (53, 22460), (58, 22502), (60, 22520), (61, 22529), (64, 22553), (67, 22574), (77, 22640), (89, 22700), (98, 22757), (104, 22796), (112, 22829), (120, 22877), (138, 22967), (155, 23105),

Gene: Saal_20 Start: 21800, Stop: 22963, Start Num: 5

Candidate Starts for Saal_20:

(Start: 4 @21764 has 3 MA's), (Start: 5 @21800 has 131 MA's), (Start: 6 @21806 has 73 MA's), (11, 21866), (17, 21923), (18, 21929), (20, 21953), (23, 21971), (25, 21989), (28, 22028), (31, 22049), (Start: 34 @22076 has 1 MA's), (35, 22094), (38, 22112), (39, 22151), (48, 22235), (53, 22295), (60, 22355), (62, 22379), (63, 22382), (87, 22517), (89, 22538), (91, 22547), (98, 22595), (105, 22637), (112, 22664), (117, 22694), (131, 22778), (148, 22880), (152, 22913), (155, 22946),

Gene: Sabbb_21 Start: 22054, Stop: 23253, Start Num: 6

Candidate Starts for Sabbb_21:

(Start: 4 @22012 has 3 MA's), (Start: 6 @22054 has 73 MA's), (9, 22093), (18, 22174), (19, 22183), (21, 22210), (22, 22213), (24, 22228), (25, 22234), (27, 22270), (29, 22276), (31, 22294), (39, 22396), (43, 22435), (47, 22477), (48, 22483), (50, 22510), (53, 22543), (54, 22552), (56, 22579), (59, 22597), (60, 22603), (64, 22636), (71, 22672), (75, 22732), (77, 22738), (79, 22744), (89, 22801), (91, 22810), (97, 22852), (98, 22858), (110, 22924), (126, 23017), (134, 23050), (143, 23110), (148, 23155), (151, 23188),

Gene: Sandalphon_21 Start: 22377, Stop: 23537, Start Num: 6

Candidate Starts for Sandalphon_21:

(Start: 3 @22275 has 1 MA's), (Start: 4 @22335 has 3 MA's), (Start: 6 @22377 has 73 MA's), (11, 22437), (18, 22500), (19, 22509), (21, 22536), (23, 22542), (25, 22560), (28, 22599), (31, 22620), (Start: 34 @22647 has 1 MA's), (35, 22665), (Start: 36 @22677 has 1 MA's), (39, 22722), (48, 22806), (53, 22866), (58, 22908), (60, 22926), (61, 22935), (64, 22959), (67, 22980), (77, 23046), (89, 23106), (98, 23163), (104, 23202), (112, 23235), (120, 23283), (155, 23511),

Gene: Sassafras_20 Start: 21952, Stop: 23115, Start Num: 5

Candidate Starts for Sassafras_20:

(Start: 4 @21916 has 3 MA's), (Start: 5 @21952 has 131 MA's), (Start: 6 @21958 has 73 MA's), (11, 22018), (14, 22057), (17, 22075), (18, 22081), (19, 22090), (20, 22105), (23, 22123), (25, 22141), (31, 22201), (Start: 34 @22228 has 1 MA's), (35, 22246), (Start: 36 @22258 has 1 MA's), (39, 22303), (41, 22321), (48, 22387), (53, 22447), (60, 22507), (62, 22531), (63, 22534), (87, 22669), (89, 22690), (90, 22696), (91, 22699), (98, 22747), (100, 22756), (105, 22789), (112, 22816), (117, 22846), (131, 22930), (148, 23032), (152, 23065), (155, 23098),

Gene: SassyB_20 Start: 21862, Stop: 23028, Start Num: 5

Candidate Starts for SassyB_20:

(1, 21376), (Start: 3 @21766 has 1 MA's), (Start: 4 @21826 has 3 MA's), (Start: 5 @21862 has 131 MA's), (Start: 6 @21868 has 73 MA's), (11, 21928), (17, 21985), (18, 21991), (19, 22000), (20, 22015), (23, 22033), (25, 22051), (27, 22087), (28, 22090), (31, 22111), (Start: 34 @22138 has 1 MA's), (39, 22213), (47, 22291), (53, 22357), (60, 22417), (67, 22471), (77, 22537), (89, 22597), (94, 22618), (98, 22654), (112, 22726), (120, 22774), (125, 22810), (138, 22864), (145, 22921), (155, 23002),

Gene: Scottish_21 Start: 23121, Stop: 24284, Start Num: 5

Candidate Starts for Scottish_21:

(Start: 4 @23085 has 3 MA's), (Start: 5 @23121 has 131 MA's), (Start: 6 @23127 has 73 MA's), (11, 23187), (14, 23226), (17, 23244), (18, 23250), (19, 23259), (20, 23274), (23, 23292), (25, 23310), (31, 23370), (Start: 34 @23397 has 1 MA's), (35, 23415), (Start: 36 @23427 has 1 MA's), (39, 23472), (41, 23490), (48, 23556), (53, 23616), (60, 23676), (62, 23700), (63, 23703), (87, 23838), (89, 23859), (90, 23865), (91, 23868), (98, 23916), (100, 23925), (105, 23958), (112, 23985), (117, 24015), (131, 24099), (148, 24201), (152, 24234), (155, 24267),

Gene: SeaLumen_21 Start: 21863, Stop: 23029, Start Num: 5

Candidate Starts for SeaLumen_21:

(Start: 4 @21827 has 3 MA's), (Start: 5 @21863 has 131 MA's), (Start: 6 @21869 has 73 MA's), (11, 21929), (18, 21992), (19, 22001), (21, 22028), (23, 22034), (25, 22052), (28, 22091), (31, 22112), (Start: 34 @22139 has 1 MA's), (35, 22157), (Start: 36 @22169 has 1 MA's), (39, 22214), (42, 22247), (48, 22298), (53, 22358), (58, 22400), (60, 22418), (61, 22427), (64, 22451), (67, 22472), (77, 22538), (89, 22598), (98, 22655), (104, 22694), (112, 22727), (120, 22775), (155, 23003),

Gene: Seabastian_20 Start: 22045, Stop: 23220, Start Num: 5

Candidate Starts for Seabastian_20:

(Start: 4 @22009 has 3 MA's), (Start: 5 @22045 has 131 MA's), (Start: 6 @22051 has 73 MA's), (11, 22111), (18, 22174), (19, 22183), (20, 22198), (21, 22210), (23, 22216), (24, 22228), (25, 22234), (28, 22273), (31, 22294), (33, 22315), (Start: 34 @22321 has 1 MA's), (35, 22339), (Start: 36 @22351 has 1 MA's), (39, 22396), (40, 22405), (44, 22441), (46, 22462), (48, 22480), (53, 22540), (60, 22600), (64, 22633), (77, 22720), (78, 22723), (79, 22726), (89, 22780), (97, 22831), (103, 22873), (107, 22885), (113, 22912), (115, 22924), (120, 22957), (127, 23005), (133, 23023), (148, 23122),

Gene: Seagreen_21 Start: 21664, Stop: 22824, Start Num: 6

Candidate Starts for Seagreen_21:

(1, 21172), (Start: 3 @21562 has 1 MA's), (Start: 4 @21622 has 3 MA's), (Start: 6 @21664 has 73 MA's), (11, 21724), (18, 21787), (19, 21796), (21, 21823), (23, 21829), (25, 21847), (28, 21886), (31, 21907), (Start: 34 @21934 has 1 MA's), (35, 21952), (Start: 36 @21964 has 1 MA's), (39, 22009), (48, 22093), (53, 22153), (58, 22195), (60, 22213), (64, 22246), (67, 22267), (77, 22333), (89, 22393), (98, 22450), (104, 22489), (112, 22522), (120, 22570), (155, 22798),

Gene: ShiLan_20 Start: 21843, Stop: 23045, Start Num: 6

Candidate Starts for ShiLan_20:

(Start: 4 @21801 has 3 MA's), (Start: 6 @21843 has 73 MA's), (9, 21882), (14, 21939), (18, 21963), (19, 21972), (21, 21999), (22, 22002), (24, 22017), (25, 22023), (27, 22059), (29, 22065), (31, 22083), (39, 22185), (43, 22224), (45, 22248), (47, 22266), (48, 22272), (50, 22299), (51, 22308), (53, 22332), (54, 22341), (56, 22368), (59, 22386), (60, 22392), (64, 22425), (69, 22455), (70, 22458), (77, 22530), (79, 22536), (89, 22593), (91, 22602), (98, 22650), (110, 22716), (114, 22734), (126, 22809), (134, 22842), (143, 22902), (145, 22932), (148, 22947), (149, 22953), (151, 22980),

Gene: ShowerHandel_20 Start: 21844, Stop: 23046, Start Num: 6

Candidate Starts for ShowerHandel_20:

(Start: 4 @21802 has 3 MA's), (Start: 6 @21844 has 73 MA's), (9, 21883), (14, 21940), (18, 21964), (19, 21973), (21, 22000), (22, 22003), (24, 22018), (25, 22024), (27, 22060), (29, 22066), (31, 22084), (39, 22186), (43, 22225), (45, 22249), (47, 22267), (48, 22273), (50, 22300), (51, 22309), (53, 22333), (54, 22342), (56, 22369), (59, 22387), (60, 22393), (64, 22426), (69, 22456), (70, 22459), (77, 22531), (79, 22537), (89, 22594), (91, 22603), (98, 22651), (110, 22717), (114, 22735), (126, 22810), (134, 22843), (143, 22903), (145, 22933), (148, 22948), (149, 22954), (151, 22981),

Gene: SiSi_20 Start: 21806, Stop: 22972, Start Num: 5

Candidate Starts for SiSi_20:

(Start: 4 @21770 has 3 MA's), (Start: 5 @21806 has 131 MA's), (Start: 6 @21812 has 73 MA's), (11, 21872), (18, 21935), (19, 21944), (21, 21971), (23, 21977), (25, 21995), (28, 22034), (31, 22055), (Start: 34 @22082 has 1 MA's), (35, 22100), (Start: 36 @22112 has 1 MA's), (39, 22157), (48, 22241), (53, 22301), (60, 22361), (61, 22370), (64, 22394), (67, 22415), (77, 22481), (89, 22541), (104, 22637), (112, 22670), (120, 22718), (138, 22808), (155, 22946),

Gene: SilverChicken_26 Start: 21453, Stop: 22616, Start Num: 7

Candidate Starts for SilverChicken_26:

(Start: 7 @21453 has 2 MA's), (9, 21492), (10, 21498), (17, 21567), (18, 21573), (21, 21609), (22, 21612), (25, 21633), (27, 21669), (29, 21675), (31, 21693), (37, 21753), (38, 21756), (39, 21795), (43, 21834), (45, 21858), (48, 21882), (52, 21936), (53, 21942), (58, 21984), (60, 22002), (73, 22080), (84, 22131), (89, 22182), (95, 22206), (99, 22245), (116, 22332), (121, 22362), (128, 22407), (134, 22428), (141, 22470), (157, 22599),

Gene: SimranZ1_21 Start: 21674, Stop: 22783, Start Num: 5

Candidate Starts for SimranZ1_21:

(Start: 4 @21638 has 3 MA's), (Start: 5 @21674 has 131 MA's), (Start: 6 @21680 has 73 MA's), (17, 21740), (18, 21746), (19, 21755), (20, 21770), (23, 21788), (25, 21806), (28, 21845), (31, 21866), (Start: 34 @21893 has 1 MA's), (35, 21911), (39, 21968), (47, 22046), (53, 22112), (60, 22172), (67, 22226), (77, 22292), (89, 22352), (98, 22409), (104, 22448), (112, 22481), (120, 22529), (155, 22757),

Gene: Slim_21 Start: 21606, Stop: 22772, Start Num: 5

Candidate Starts for Slim_21:

(Start: 4 @21570 has 3 MA's), (Start: 5 @21606 has 131 MA's), (Start: 6 @21612 has 73 MA's), (11, 21672), (18, 21735), (19, 21744), (21, 21771), (23, 21777), (25, 21795), (28, 21834), (31, 21855), (Start: 34 @21882 has 1 MA's), (35, 21900), (Start: 36 @21912 has 1 MA's), (39, 21957), (48, 22041), (53, 22101), (57, 22140), (58, 22143), (60, 22161), (61, 22170), (64, 22194), (67, 22215), (77, 22281), (89, 22341), (98, 22398), (104, 22437), (112, 22470), (120, 22518), (138, 22608), (155, 22746),

Gene: Sparkdehlily_20 Start: 21846, Stop: 23009, Start Num: 5

Candidate Starts for Sparkdehlily_20:

(Start: 4 @21810 has 3 MA's), (Start: 5 @21846 has 131 MA's), (Start: 6 @21852 has 73 MA's), (11, 21912), (17, 21969), (18, 21975), (20, 21999), (23, 22017), (25, 22035), (28, 22074), (31, 22095), (Start: 34 @22122 has 1 MA's), (35, 22140), (38, 22158), (39, 22197), (48, 22281), (53, 22341), (60, 22401), (62, 22425), (63, 22428), (87, 22563), (89, 22584), (91, 22593), (98, 22641), (105, 22683), (112, 22710), (117, 22740), (131, 22824), (148, 22926), (152, 22959), (155, 22992),

Gene: Spartacus_21 Start: 21904, Stop: 23064, Start Num: 6

Candidate Starts for Spartacus_21:

(Start: 3 @21802 has 1 MA's), (Start: 4 @21862 has 3 MA's), (Start: 6 @21904 has 73 MA's), (11, 21964), (18, 22027), (19, 22036), (21, 22063), (23, 22069), (25, 22087), (28, 22126), (31, 22147), (Start: 34 @22174 has 1 MA's), (35, 22192), (Start: 36 @22204 has 1 MA's), (39, 22249), (48, 22333), (53, 22393), (58, 22435), (60, 22453), (61, 22462), (64, 22486), (67, 22507), (77, 22573), (89, 22633), (98, 22690), (104, 22729), (112, 22762), (120, 22810), (155, 23038),

Gene: Spikelee_21 Start: 21646, Stop: 22806, Start Num: 6

Candidate Starts for Spikelee_21:

(1, 21154), (Start: 3 @21544 has 1 MA's), (Start: 4 @21604 has 3 MA's), (Start: 6 @21646 has 73 MA's), (11, 21706), (18, 21769), (19, 21778), (21, 21805), (23, 21811), (25, 21829), (28, 21868), (Start: 34 @21916 has 1 MA's), (35, 21934), (Start: 36 @21946 has 1 MA's), (39, 21991), (48, 22075), (53, 22135), (57, 22174), (58, 22177), (60, 22195), (61, 22204), (64, 22228), (67, 22249), (77, 22315), (89, 22375), (98, 22432), (104, 22471), (112, 22504), (120, 22552), (138, 22642), (155, 22780),

Gene: Spoonbill_20 Start: 21842, Stop: 23044, Start Num: 6

Candidate Starts for Spoonbill_20:

(Start: 4 @21800 has 3 MA's), (Start: 6 @21842 has 73 MA's), (9, 21881), (14, 21938), (18, 21962), (19, 21971), (21, 21998), (22, 22001), (24, 22016), (25, 22022), (27, 22058), (29, 22064), (31, 22082), (39, 22184), (43, 22223), (45, 22247), (47, 22265), (48, 22271), (50, 22298), (51, 22307), (53, 22331), (54, 22340), (56, 22367), (59, 22385), (60, 22391), (64, 22424), (69, 22454), (70, 22457), (77, 22529), (79, 22535), (89, 22592), (91, 22601), (98, 22649), (110, 22715), (114, 22733), (126, 22808), (134, 22841), (143, 22901), (145, 22931), (148, 22946), (149, 22952), (151, 22979),

Gene: StAnnes_20 Start: 21858, Stop: 23024, Start Num: 5

Candidate Starts for StAnnes_20:

(Start: 4 @21822 has 3 MA's), (Start: 5 @21858 has 131 MA's), (Start: 6 @21864 has 73 MA's), (11, 21924), (18, 21987), (20, 22011), (21, 22023), (23, 22029), (25, 22047), (28, 22086), (31, 22107), (Start: 34 @22134 has 1 MA's), (35, 22152), (Start: 36 @22164 has 1 MA's), (39, 22209), (44, 22254), (48, 22293), (53, 22353), (60, 22413), (61, 22422), (64, 22446), (68, 22470), (76, 22530), (80, 22539), (82, 22542), (85, 22566), (88, 22590), (89, 22596), (97, 22647), (115, 22737), (124, 22800), (131, 22833), (133, 22836), (134, 22839), (137, 22854), (148, 22926),

Gene: Stap_21 Start: 21853, Stop: 23013, Start Num: 6

Candidate Starts for Stap_21:

(1, 21361), (Start: 3 @21751 has 1 MA's), (Start: 4 @21811 has 3 MA's), (Start: 6 @21853 has 73 MA's), (11, 21913), (18, 21976), (19, 21985), (21, 22012), (23, 22018), (25, 22036), (28, 22075), (Start: 34 @22123 has 1 MA's), (35, 22141), (Start: 36 @22153 has 1 MA's), (39, 22198), (48, 22282), (53, 22342), (57, 22381), (58, 22384), (60, 22402), (61, 22411), (64, 22435), (67, 22456), (77, 22522), (89, 22582), (98, 22639), (104, 22678), (112, 22711), (120, 22759), (138, 22849), (155, 22987),

Gene: Starcevich_21 Start: 21608, Stop: 22774, Start Num: 5

Candidate Starts for Starcevich_21:

(Start: 4 @21572 has 3 MA's), (Start: 5 @21608 has 131 MA's), (Start: 6 @21614 has 73 MA's), (11, 21674), (18, 21737), (19, 21746), (21, 21773), (23, 21779), (25, 21797), (28, 21836), (31, 21857), (Start: 34 @21884 has 1 MA's), (35, 21902), (Start: 36 @21914 has 1 MA's), (39, 21959), (48, 22043), (53, 22103), (57, 22142), (58, 22145), (60, 22163), (61, 22172), (64, 22196), (67, 22217), (77, 22283), (89, 22343), (98, 22400), (104, 22439), (112, 22472), (120, 22520), (138, 22610), (155, 22748),

Gene: Strokeseat_20 Start: 21912, Stop: 23078, Start Num: 5

Candidate Starts for Strokeseat_20:

(1, 21426), (Start: 3 @21816 has 1 MA's), (Start: 4 @21876 has 3 MA's), (Start: 5 @21912 has 131 MA's), (Start: 6 @21918 has 73 MA's), (11, 21978), (18, 22041), (19, 22050), (21, 22077), (23, 22083), (25, 22101), (28, 22140), (31, 22161), (Start: 34 @22188 has 1 MA's), (35, 22206), (Start: 36 @22218 has 1 MA's), (39, 22263), (48, 22347), (53, 22407), (58, 22449), (60, 22467), (61, 22476), (64, 22500), (67, 22521), (77, 22587), (89, 22647), (98, 22704), (104, 22743), (112, 22776), (120, 22824), (138, 22914), (155, 23052),

Gene: SuperGrey_21 Start: 22491, Stop: 23657, Start Num: 5

Candidate Starts for SuperGrey_21:

(Start: 4 @22455 has 3 MA's), (Start: 5 @22491 has 131 MA's), (Start: 6 @22497 has 73 MA's), (11, 22557), (18, 22620), (19, 22629), (21, 22656), (23, 22662), (25, 22680), (28, 22719), (31, 22740), (Start: 34 @22767 has 1 MA's), (35, 22785), (Start: 36 @22797 has 1 MA's), (39, 22842), (48, 22926), (53, 22986), (58, 23028), (60, 23046), (61, 23055), (64, 23079), (67, 23100), (77, 23166), (89, 23226), (98, 23283), (104, 23322), (112, 23355), (120, 23403), (138, 23493), (155, 23631),

Gene: SwagPigglett_20 Start: 21823, Stop: 22986, Start Num: 5

Candidate Starts for SwagPigglett_20:

(Start: 4 @21787 has 3 MA's), (Start: 5 @21823 has 131 MA's), (Start: 6 @21829 has 73 MA's), (11, 21889), (17, 21946), (18, 21952), (20, 21976), (23, 21994), (25, 22012), (28, 22051), (31, 22072), (Start: 34 @22099 has 1 MA's), (35, 22117), (38, 22135), (39, 22174), (48, 22258), (53, 22318), (60, 22378), (62, 22402), (63, 22405), (87, 22540), (89, 22561), (91, 22570), (98, 22618), (105, 22660), (112, 22687), (117, 22717), (131, 22801), (148, 22903), (152, 22936), (155, 22969),

Gene: TDanisky_20 Start: 21846, Stop: 23009, Start Num: 5

Candidate Starts for TDanisky_20:

(Start: 4 @21810 has 3 MA's), (Start: 5 @21846 has 131 MA's), (Start: 6 @21852 has 73 MA's), (11, 21912), (17, 21969), (18, 21975), (20, 21999), (23, 22017), (25, 22035), (28, 22074), (31, 22095), (Start: 34 @22122 has 1 MA's), (35, 22140), (38, 22158), (39, 22197), (48, 22281), (53, 22341), (60, 22401), (62, 22425), (63, 22428), (87, 22563), (89, 22584), (91, 22593), (98, 22641), (105, 22683), (112, 22710), (117, 22740), (131, 22824), (148, 22926), (152, 22959), (155, 22992),

Gene: Taj_20 Start: 21847, Stop: 23013, Start Num: 5

Candidate Starts for Taj_20:

(Start: 4 @21811 has 3 MA's), (Start: 5 @21847 has 131 MA's), (Start: 6 @21853 has 73 MA's), (11, 21913), (18, 21976), (19, 21985), (21, 22012), (23, 22018), (25, 22036), (28, 22075), (31, 22096), (Start: 34 @22123 has 1 MA's), (35, 22141), (Start: 36 @22153 has 1 MA's), (39, 22198), (48, 22282), (53, 22342), (58, 22384), (60, 22402), (61, 22411), (64, 22435), (67, 22456), (77, 22522), (89, 22582), (98, 22639), (104, 22678), (112, 22711), (120, 22759), (138, 22849), (145, 22906), (155, 22987),

Gene: Tchotchke_21 Start: 21754, Stop: 22914, Start Num: 6

Candidate Starts for Tchotchke_21:

(1, 21262), (Start: 3 @21652 has 1 MA's), (Start: 4 @21712 has 3 MA's), (Start: 6 @21754 has 73 MA's), (11, 21814), (18, 21877), (19, 21886), (21, 21913), (23, 21919), (25, 21937), (28, 21976), (31, 21997), (Start: 34 @22024 has 1 MA's), (35, 22042), (Start: 36 @22054 has 1 MA's), (39, 22099), (48, 22183), (53, 22243), (58, 22285), (60, 22303), (64, 22336), (67, 22357), (77, 22423), (89, 22483), (98, 22540), (104, 22579), (112, 22612), (120, 22660), (155, 22888),

Gene: TootsiePop_21 Start: 21678, Stop: 22850, Start Num: 6

Candidate Starts for TootsiePop_21:

(Start: 4 @21636 has 3 MA's), (Start: 5 @21672 has 131 MA's), (Start: 6 @21678 has 73 MA's), (11, 21738), (18, 21801), (20, 21825), (21, 21837), (23, 21843), (25, 21861), (28, 21900), (31, 21921), (Start: 34 @21948 has 1 MA's), (38, 21984), (39, 22023), (41, 22041), (43, 22059), (46, 22089), (47, 22101), (53, 22167), (60, 22227), (62, 22251), (64, 22260), (72, 22296), (75, 22341), (77, 22347), (78, 22350), (88, 22404), (89, 22410), (93, 22428), (98, 22467), (106, 22512), (107, 22515), (115, 22554), (118, 22578), (120, 22587), (122, 22596), (134, 22656), (135, 22662),

Gene: Tootsieroll_21 Start: 21656, Stop: 22822, Start Num: 5

Candidate Starts for Tootsieroll_21:

(Start: 3 @21560 has 1 MA's), (Start: 4 @21620 has 3 MA's), (Start: 5 @21656 has 131 MA's), (Start: 6 @21662 has 73 MA's), (11, 21722), (18, 21785), (19, 21794), (21, 21821), (23, 21827), (25, 21845), (28, 21884), (31, 21905), (Start: 34 @21932 has 1 MA's), (35, 21950), (Start: 36 @21962 has 1 MA's),

(39, 22007), (48, 22091), (53, 22151), (58, 22193), (60, 22211), (61, 22220), (64, 22244), (67, 22265), (77, 22331), (89, 22391), (98, 22448), (104, 22487), (112, 22520), (120, 22568), (138, 22658), (155, 22796),

Gene: Topiatin_22 Start: 22521, Stop: 23681, Start Num: 6

Candidate Starts for Topiatin_22:

(Start: 3 @22419 has 1 MA's), (Start: 4 @22479 has 3 MA's), (Start: 5 @22515 has 131 MA's), (Start: 6 @22521 has 73 MA's), (11, 22581), (18, 22644), (19, 22653), (21, 22680), (23, 22686), (25, 22704), (27, 22740), (28, 22743), (31, 22764), (Start: 34 @22791 has 1 MA's), (35, 22809), (Start: 36 @22821 has 1 MA's), (39, 22866), (48, 22950), (53, 23010), (58, 23052), (60, 23070), (64, 23103), (67, 23124), (77, 23190), (89, 23250), (98, 23307), (104, 23346), (112, 23379), (120, 23427), (138, 23517), (155, 23655),

Gene: Toron_22 Start: 22193, Stop: 23350, Start Num: 6

Candidate Starts for Toron_22:

(Start: 6 @22193 has 73 MA's), (11, 22250), (15, 22292), (17, 22307), (18, 22313), (25, 22373), (27, 22409), (29, 22415), (31, 22433), (39, 22535), (43, 22574), (47, 22616), (48, 22622), (50, 22649), (53, 22682), (54, 22691), (55, 22703), (57, 22721), (60, 22742), (61, 22751), (62, 22766), (64, 22769), (87, 22904), (89, 22925), (91, 22934), (98, 22982), (100, 22991), (105, 23024), (111, 23051), (117, 23081), (132, 23165), (144, 23246), (147, 23267), (151, 23300), (155, 23333),

Gene: Totinger_21 Start: 21606, Stop: 22772, Start Num: 5

Candidate Starts for Totinger_21:

(Start: 4 @21570 has 3 MA's), (Start: 5 @21606 has 131 MA's), (Start: 6 @21612 has 73 MA's), (11, 21672), (18, 21735), (19, 21744), (21, 21771), (23, 21777), (25, 21795), (28, 21834), (31, 21855), (Start: 34 @21882 has 1 MA's), (35, 21900), (Start: 36 @21912 has 1 MA's), (39, 21957), (48, 22041), (53, 22101), (57, 22140), (58, 22143), (60, 22161), (61, 22170), (64, 22194), (67, 22215), (77, 22281), (89, 22341), (98, 22398), (104, 22437), (112, 22470), (120, 22518), (138, 22608), (155, 22746),

Gene: Tweety_21 Start: 22143, Stop: 23033, Start Num: 34

Candidate Starts for Tweety_21:

(28, 22095), (30, 22113), (31, 22116), (Start: 34 @22143 has 1 MA's), (35, 22161), (Start: 36 @22173 has 1 MA's), (39, 22218), (48, 22302), (53, 22362), (58, 22404), (60, 22422), (61, 22431), (64, 22455), (67, 22476), (77, 22542), (89, 22602), (98, 22659), (104, 22698), (112, 22731), (120, 22779), (138, 22869), (155, 23007),

Gene: VRedHorse_20 Start: 21981, Stop: 23147, Start Num: 5

Candidate Starts for VRedHorse_20:

(1, 21495), (Start: 3 @21885 has 1 MA's), (Start: 4 @21945 has 3 MA's), (Start: 5 @21981 has 131 MA's), (Start: 6 @21987 has 73 MA's), (11, 22047), (18, 22110), (19, 22119), (21, 22146), (23, 22152), (25, 22170), (28, 22209), (31, 22230), (Start: 34 @22257 has 1 MA's), (35, 22275), (Start: 36 @22287 has 1 MA's), (39, 22332), (48, 22416), (53, 22476), (57, 22515), (58, 22518), (60, 22536), (61, 22545), (64, 22569), (67, 22590), (77, 22656), (89, 22716), (98, 22773), (104, 22812), (112, 22845), (120, 22893), (138, 22983), (155, 23121),

Gene: Veteran_20 Start: 21819, Stop: 22985, Start Num: 5

Candidate Starts for Veteran_20:

(Start: 4 @21783 has 3 MA's), (Start: 5 @21819 has 131 MA's), (Start: 6 @21825 has 73 MA's), (11, 21885), (18, 21948), (19, 21957), (21, 21984), (23, 21990), (25, 22008), (28, 22047), (31, 22068), (Start: 34 @22095 has 1 MA's), (35, 22113), (Start: 36 @22125 has 1 MA's), (39, 22170), (48, 22254), (53, 22314), (60, 22374), (61, 22383), (64, 22407), (67, 22428), (77, 22494), (89, 22554), (104, 22650), (112, 22683), (120, 22731), (138, 22821), (155, 22959),

Gene: Violac_21 Start: 22357, Stop: 23556, Start Num: 6

Candidate Starts for Violac_21:

(Start: 4 @22315 has 3 MA's), (Start: 6 @22357 has 73 MA's), (9, 22396), (18, 22477), (19, 22486), (22, 22516), (25, 22537), (27, 22573), (29, 22579), (31, 22597), (39, 22699), (43, 22738), (45, 22762), (47, 22780), (48, 22786), (50, 22813), (53, 22846), (54, 22855), (56, 22882), (59, 22900), (60, 22906), (64, 22939), (71, 22975), (75, 23035), (77, 23041), (79, 23047), (89, 23104), (91, 23113), (92, 23116), (97, 23155), (98, 23161), (110, 23227), (126, 23320), (134, 23353), (143, 23413), (148, 23458), (151, 23491),

Gene: Vivum_20 Start: 21761, Stop: 22927, Start Num: 5

Candidate Starts for Vivum_20:

(Start: 3 @21665 has 1 MA's), (Start: 4 @21725 has 3 MA's), (Start: 5 @21761 has 131 MA's), (Start: 6 @21767 has 73 MA's), (11, 21827), (18, 21890), (19, 21899), (21, 21926), (23, 21932), (25, 21950), (28, 21989), (31, 22010), (Start: 34 @22037 has 1 MA's), (35, 22055), (Start: 36 @22067 has 1 MA's), (39, 22112), (48, 22196), (53, 22256), (57, 22295), (58, 22298), (60, 22316), (61, 22325), (64, 22349), (67, 22370), (77, 22436), (89, 22496), (98, 22553), (104, 22592), (112, 22625), (120, 22673), (138, 22763), (155, 22901),

Gene: Wachhund_20 Start: 21839, Stop: 23005, Start Num: 5

Candidate Starts for Wachhund_20:

(Start: 3 @21743 has 1 MA's), (Start: 4 @21803 has 3 MA's), (Start: 5 @21839 has 131 MA's), (Start: 6 @21845 has 73 MA's), (11, 21905), (18, 21968), (19, 21977), (21, 22004), (23, 22010), (25, 22028), (28, 22067), (31, 22088), (Start: 34 @22115 has 1 MA's), (35, 22133), (Start: 36 @22145 has 1 MA's), (39, 22190), (48, 22274), (53, 22334), (58, 22376), (60, 22394), (61, 22403), (64, 22427), (67, 22448), (77, 22514), (89, 22574), (98, 22631), (104, 22670), (112, 22703), (120, 22751), (138, 22841), (155, 22979),

Gene: Wanda_41 Start: 34242, Stop: 35408, Start Num: 5

Candidate Starts for Wanda_41:

(Start: 3 @34146 has 1 MA's), (Start: 4 @34206 has 3 MA's), (Start: 5 @34242 has 131 MA's), (Start: 6 @34248 has 73 MA's), (11, 34308), (18, 34371), (19, 34380), (21, 34407), (23, 34413), (25, 34431), (28, 34470), (31, 34491), (Start: 34 @34518 has 1 MA's), (35, 34536), (Start: 36 @34548 has 1 MA's), (39, 34593), (48, 34677), (53, 34737), (58, 34779), (60, 34797), (64, 34830), (67, 34851), (77, 34917), (89, 34977), (98, 35034), (112, 35106), (120, 35154), (155, 35382),

Gene: Wee_21 Start: 22388, Stop: 23554, Start Num: 5

Candidate Starts for Wee_21:

(Start: 4 @22352 has 3 MA's), (Start: 5 @22388 has 131 MA's), (Start: 6 @22394 has 73 MA's), (11, 22454), (18, 22517), (19, 22526), (21, 22553), (23, 22559), (25, 22577), (28, 22616), (31, 22637), (Start: 34 @22664 has 1 MA's), (35, 22682), (Start: 36 @22694 has 1 MA's), (39, 22739), (48, 22823), (53, 22883), (58, 22925), (60, 22943), (61, 22952), (64, 22976), (67, 22997), (77, 23063), (89, 23123), (98, 23180), (104, 23219), (112, 23252), (120, 23300), (155, 23528),

Gene: Whatsapiecost_20 Start: 21870, Stop: 23030, Start Num: 6

Candidate Starts for Whatsapiecost_20:

(1, 21378), (Start: 3 @21768 has 1 MA's), (Start: 4 @21828 has 3 MA's), (Start: 6 @21870 has 73 MA's), (11, 21930), (18, 21993), (19, 22002), (21, 22029), (23, 22035), (25, 22053), (28, 22092), (31, 22113), (Start: 34 @22140 has 1 MA's), (35, 22158), (Start: 36 @22170 has 1 MA's), (39, 22215), (48, 22299), (53, 22359), (58, 22401), (60, 22419), (61, 22428), (64, 22452), (67, 22473), (77, 22539), (89, 22599), (98, 22656), (104, 22695), (112, 22728), (120, 22776), (155, 23004),

Gene: Whouxphf_20 Start: 21921, Stop: 23087, Start Num: 5

Candidate Starts for Whouxphf_20:

(Start: 4 @21885 has 3 MA's), (Start: 5 @21921 has 131 MA's), (Start: 6 @21927 has 73 MA's), (11, 21987), (17, 22044), (18, 22050), (19, 22059), (20, 22074), (23, 22092), (25, 22110), (27, 22146), (28, 22149), (31, 22170), (Start: 34 @22197 has 1 MA's), (39, 22272), (48, 22356), (53, 22416), (60, 22476), (67, 22530), (77, 22596), (89, 22656), (98, 22713), (112, 22785), (120, 22833), (125, 22869), (155, 23061),

Gene: WillSterrel_21 Start: 23207, Stop: 24373, Start Num: 5

Candidate Starts for WillSterrel_21:

(Start: 3 @23111 has 1 MA's), (Start: 4 @23171 has 3 MA's), (Start: 5 @23207 has 131 MA's), (Start: 6 @23213 has 73 MA's), (11, 23273), (18, 23336), (19, 23345), (21, 23372), (23, 23378), (25, 23396), (28, 23435), (31, 23456), (Start: 34 @23483 has 1 MA's), (35, 23501), (Start: 36 @23513 has 1 MA's), (39, 23558), (48, 23642), (53, 23702), (57, 23741), (58, 23744), (60, 23762), (61, 23771), (64, 23795), (67, 23816), (77, 23882), (89, 23942), (98, 23999), (104, 24038), (112, 24071), (120, 24119), (138, 24209), (155, 24347),

Gene: XFactor_20 Start: 21826, Stop: 22986, Start Num: 6

Candidate Starts for XFactor_20:

(1, 21334), (Start: 3 @21724 has 1 MA's), (Start: 4 @21784 has 3 MA's), (Start: 6 @21826 has 73 MA's), (11, 21886), (18, 21949), (19, 21958), (21, 21985), (23, 21991), (25, 22009), (28, 22048), (31, 22069), (Start: 34 @22096 has 1 MA's), (35, 22114), (Start: 36 @22126 has 1 MA's), (39, 22171), (48, 22255), (53, 22315), (58, 22357), (60, 22375), (61, 22384), (64, 22408), (67, 22429), (77, 22495), (89, 22555), (98, 22612), (104, 22651), (112, 22684), (120, 22732), (155, 22960),

Gene: Yorick_20 Start: 21842, Stop: 23044, Start Num: 6

Candidate Starts for Yorick_20:

(Start: 4 @21800 has 3 MA's), (Start: 6 @21842 has 73 MA's), (9, 21881), (14, 21938), (18, 21962), (19, 21971), (21, 21998), (22, 22001), (24, 22016), (25, 22022), (27, 22058), (29, 22064), (31, 22082), (39, 22184), (43, 22223), (45, 22247), (47, 22265), (48, 22271), (50, 22298), (51, 22307), (53, 22331), (54, 22340), (56, 22367), (59, 22385), (60, 22391), (64, 22424), (69, 22454), (70, 22457), (77, 22529), (79, 22535), (89, 22592), (91, 22601), (98, 22649), (110, 22715), (114, 22733), (126, 22808), (134, 22841), (143, 22901), (145, 22931), (148, 22946), (149, 22952), (151, 22979),

Gene: Zerg_20 Start: 21787, Stop: 22950, Start Num: 5

Candidate Starts for Zerg_20:

(Start: 4 @21751 has 3 MA's), (Start: 5 @21787 has 131 MA's), (Start: 6 @21793 has 73 MA's), (11, 21853), (14, 21892), (17, 21910), (18, 21916), (19, 21925), (20, 21940), (23, 21958), (25, 21976), (31, 22036), (Start: 34 @22063 has 1 MA's), (35, 22081), (Start: 36 @22093 has 1 MA's), (39, 22138), (41, 22156), (48, 22222), (53, 22282), (60, 22342), (62, 22366), (63, 22369), (87, 22504), (89, 22525), (91, 22534), (98, 22582), (105, 22624), (112, 22651), (117, 22681), (148, 22867), (152, 22900), (155, 22933),

Gene: Zizzle_20 Start: 21786, Stop: 22988, Start Num: 6

Candidate Starts for Zizzle_20:

(Start: 4 @21744 has 3 MA's), (Start: 6 @21786 has 73 MA's), (9, 21825), (14, 21882), (18, 21906), (19, 21915), (21, 21942), (22, 21945), (24, 21960), (25, 21966), (27, 22002), (29, 22008), (31, 22026), (39, 22128), (43, 22167), (45, 22191), (47, 22209), (48, 22215), (50, 22242), (51, 22251), (53, 22275), (54, 22284), (56, 22311), (59, 22329), (60, 22335), (64, 22368), (69, 22398), (70, 22401), (77, 22473), (79, 22479), (89, 22536), (91, 22545), (98, 22593), (110, 22659), (114, 22677), (126, 22752), (134, 22785), (143, 22845), (145, 22875), (148, 22890), (149, 22896), (151, 22923),