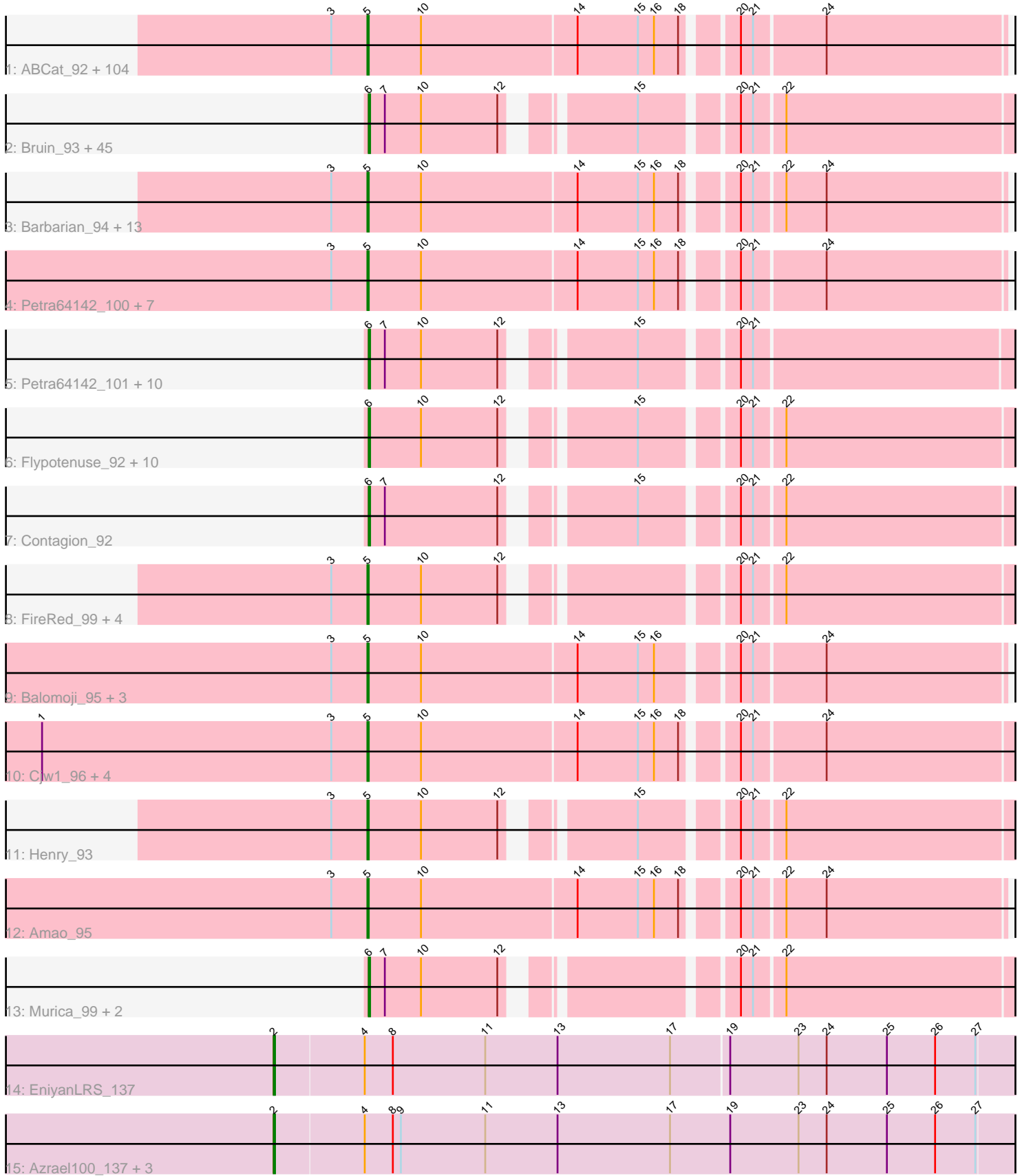


Pham 292503



Note: Tracks are now grouped by subcluster and scaled. Switching in subcluster is indicated by changes in track color. Track scale is now set by default to display the region 30 bp upstream of start 1 to 30 bp downstream of the last possible start. If this default region is judged to be packed too tightly with annotated starts, the track will be further scaled to only show that region of the ORF with annotated starts. This action will be indicated by adding "Zoomed" to the title. For starts, yellow indicates the location of called starts comprised solely of Glimmer/GeneMark auto-annotations, green indicates the location of called starts with at least 1 manual gene annotation.

Pham 292503 Report

This analysis was run 04/18/26 on database version 643.

Pham number 292503 has 220 members, 21 are drafts.

Phages represented in each track:

- Track 1 : ABCat_92, Bruin_92, GoldenSpark_99, HanKaySha_96, ShereKhan_93, Lilpickle_94, Hopey_96, Thresher_98, Thimble_97, IHOP_93, Ukulele_90, TBrady12_98, Command613_97, Bench_98, MPhalcon_96, BugsBunny_95, Becksu_94, Filch_97, Qualification_96, Rakim_96, StellaBean_93, FairyPath_95, Marshmallow_93, Goku_94, Czyszczonek_96, Misfit_96, CrystalP_94, Mindy_94, Holt_100, AmericanBeauty_99, Easy2Say_96, Mosby_91, Manda_97, Murica_98, Pumpkin_99, NelitzaMV_93, Kostya_95, Dumbo_95, Moldemort_98, YassJohnny_92, Eureka_94, ShamWow_95, Phaux_98, ChosenOne_95, Hoonter_98, SophKB_92, Gemini_100, Brewer_90, Inca_92, Phaja_93, Stank_97, Youngblood_98, Emmina_95, SirDuracell_95, Tomaszewski_90, BaboJay_95, Argent26_99, Highbury_94, GooberAzure_98, RiverMonster_96, Xandras_94, Ptowny_92, TeardropMSU_91, Myrale_95, Sassay_90, Elite2014_94, Murphy_95, BilboSwaggins_93, Pharsalus_92, Kanye_92, Gage_97, Paperbeatsrock_94, Maxxinista_98, MadamMonkfish_95, NoSleep_96, BadStone_92, Saints25_94, Lilac_98, Dusk_92, Bogg_95, Stark_97, HufflyPuff_97, MollyToe_90, DrDrey_95, Elph10_96, Goldilocks_98, Contagion_91, NonchalantPear_93, Simpliphy_94, PaddyBaddy_96, Toto_93, Greep_99, Nala_97, Lilizi_96, OrionPax_94, Willez_90, MISSy_96, Porky_94, StolenFromERC_98, xkcd_98, Miniwave_90, Tarkin_94, Kimchi_99, Phrux_93, Terminus_98
- Track 2 : Bruin_93, HanKaySha_97, Hopey_97, Mosby_92, Pat3_93, Ukulele_91, Harella_96, MPhalcon_97, Becksu_95, Gator_94, Rakim_97, Czyszczonek_97, Argent26_100, 244_97, Misfit_97, Mindy_95, Tomaszewski_91, Myrale_96, Kanye_93, GoldenSpark_100, Moldemort_99, Gemini_101, Brewer_91, Stank_98, Youngblood_99, Simpliphy_95, Cookies_93, GooberAzure_99, Xandras_95, MadamMonkfish_96, Nala_98, Balomogi_96, Hoonter_99, Holt_101, Sassay_91, Bench_99, ShereKhan_94, Dumbo_96, Lilizi_97, OrionPax_95, Willez_91, MISSy_97, StolenFromERC_99, Kimchi_100, Gage_98, Terminus_99
- Track 3 : Barbarian_94, Adnama_99, BigBubba_95, Harella_95, Teaspoon_96, Cactus_98, Wiggin_97, Sotrice96_96, Icee_96, Asriel_93, Tuco_96, Flypotenuse_91, Glexan_94, Traaww1_91
- Track 4 : Petra64142_100, DoctorDiddles_94, Pat3_92, ChotaBhai_95, Buck_96, Bask21_95, Daikon_96, StormChicken_97
- Track 5 : Petra64142_101, DoctorDiddles_95, ChotaBhai_96, Amao_96, Rimmer_94, Buck_97, SirDuracell_96, Bask21_96, Daikon_97, TeamEdward_96, StormChicken_98
- Track 6 : Flypotenuse_92, Adnama_100, Barbarian_95, Wiggin_98, Sotrice96_97, Cactus_99, Asriel_94, Tuco_97, Icee_97, Traaww1_92, Glexan_95

- Track 7 : Contagion_92
- Track 8 : FireRed_99, PhatBacter_99, Palpatine_97, Policronamos_98, Nimrod_96
- Track 9 : Balomoji_95, Gator_93, Cookies_92, FoghornLeghorn_89
- Track 10 : Cjw1_96, 244_96, Rimmer_93, TeamEdward_95, JeTaime_96
- Track 11 : Henry_93
- Track 12 : Amao_95
- Track 13 : Murica_99, HufflyPuff_98, xkcd_99
- Track 14 : EniyanLRS_137
- Track 15 : Azrael100_137, Cosmo_144, MaryV_130, Wildcat_144

Summary of Final Annotations (See graph section above for start numbers):

The start number called the most often in the published annotations is 5, it was called in 128 of the 199 non-draft genes in the pham.

Genes that call this "Most Annotated" start:

- 244_96, ABCat_92, Adnama_99, Amao_95, AmericanBeauty_99, Argent26_99, Asriel_93, BaboJay_95, BadStone_92, Balomoji_95, Barbarian_94, Bask21_95, Becksu_94, Bench_98, BigBubba_95, BilboSwaggins_93, Bogg_95, Brewer_90, Bruin_92, Buck_96, BugsBunny_95, Cactus_98, ChosenOne_95, ChotaBhai_95, Cjw1_96, Command613_97, Contagion_91, Cookies_92, CrystalP_94, Czystoczon1_96, Daikon_96, DoctorDiddles_94, DrDrey_95, Dumbo_95, Dusk_92, Easy2Say_96, Elite2014_94, Elph10_96, Emmina_95, Eureka_94, FairyPath_95, Filch_97, FireRed_99, Flypotenuse_91, FoghornLeghorn_89, Gage_97, Gator_93, Gemini_100, Glexan_94, Goku_94, GoldenSpark_99, Goldilocks_98, GooberAzure_98, Greep_99, HanKaySha_96, Harella_95, Henry_93, Highbury_94, Holt_100, Hoonter_98, Hopey_96, HufflyPuff_97, IHOP_93, Icee_96, Inca_92, JeTaime_96, Kanye_92, Kimchi_99, Kostya_95, Lilac_98, Lilizi_96, Lilpickle_94, MISSy_96, MPhalcon_96, MadamMonkfish_95, Manda_97, Marshmallow_93, Maxxinista_98, Mindy_94, Miniwave_90, Misfit_96, Moldemort_98, MollyToe_90, Mosby_91, Murica_98, Murphy_95, Myrale_95, Nala_97, NelitzaMV_93, Nimrod_96, NoSleep_96, NonchalantPear_93, OrionPax_94, PaddyBaddy_96, Palpatine_97, Paperbeatsrock_94, Pat3_92, Petra64142_100, Phaja_93, Pharsalus_92, PhatBacter_99, Phaux_98, Phrux_93, Policronamos_98, Porky_94, Ptowny_92, Pumpkin_99, Quallification_96, Rakim_96, Rimmer_93, RiverMonster_96, Saints25_94, Sassay_90, ShamWow_95, ShereKhan_93, Simpliphy_94, SirDuracell_95, SophKB_92, Sotrice96_96, Stank_97, Stark_97, StellaBean_93, StolenFromERC_98, StormChicken_97, TBrady12_98, Tarkin_94, TeamEdward_95, TeardropMSU_91, Teaspoon_96, Terminus_98, Thimble_97, Thresher_98, Tomaszewski_90, Toto_93, Traaww1_91, Tuco_96, Ukulele_90, Wiggin_97, Willez_90, Xandras_94, YassJohnny_92, Youngblood_98, xkcd_98,

Genes that have the "Most Annotated" start but do not call it:

-

Genes that do not have the "Most Annotated" start:

- 244_97, Adnama_100, Amao_96, Argent26_100, Asriel_94, Azrael100_137, Balomoji_96, Barbarian_95, Bask21_96, Becksu_95, Bench_99, Brewer_91, Bruin_93, Buck_97, Cactus_99, ChotaBhai_96, Contagion_92, Cookies_93, Cosmo_144, Czystoczon1_97, Daikon_97, DoctorDiddles_95, Dumbo_96,

EniyanLRS_137, Flypotenuse_92, Gage_98, Gator_94, Gemini_101, Glexan_95, GoldenSpark_100, GooberAzure_99, HanKaySha_97, Harella_96, Holt_101, Hoonter_99, Hopey_97, HufflyPuff_98, Icee_97, Kanye_93, Kimchi_100, Lilizi_97, MISSy_97, MPhalcon_97, MadamMonkfish_96, MaryV_130, Mindy_95, Misfit_97, Moldemort_99, Mosby_92, Murica_99, Myrale_96, Nala_98, OrionPax_95, Pat3_93, Petra64142_101, Rakim_97, Rimmer_94, Sassay_91, ShereKhan_94, Simpliphy_95, SirDuracell_96, Sotrice96_97, Stank_98, StolenFromERC_99, StormChicken_98, TeamEdward_96, Terminus_99, Tomaszewski_91, Traaww1_92, Tuco_97, Ukulele_91, Wiggin_98, Wildcat_144, Willez_91, Xandras_95, Youngblood_99, xkcd_99,

Summary by start number:

Start 2:

- Found in 5 of 220 (2.3%) of genes in pham
- Manual Annotations of this start: 5 of 199
- Called 100.0% of time when present
- Phage (with cluster) where this start called: Azrael100_137 (V), Cosmo_144 (V), EniyanLRS_137 (V), MaryV_130 (V), Wildcat_144 (V),

Start 5:

- Found in 143 of 220 (65.0%) of genes in pham
- Manual Annotations of this start: 128 of 199
- Called 100.0% of time when present
- Phage (with cluster) where this start called: 244_96 (E), ABCat_92 (E), Adnama_99 (E), Amao_95 (E), AmericanBeauty_99 (E), Argent26_99 (E), Asriel_93 (E), BaboJay_95 (E), BadStone_92 (E), Balomoji_95 (E), Barbarian_94 (E), Bask21_95 (E), Becksu_94 (E), Bench_98 (E), BigBubba_95 (E), BilboSwaggins_93 (E), Bogg_95 (E), Brewer_90 (E), Bruin_92 (E), Buck_96 (E), BugsBunny_95 (E), Cactus_98 (E), ChosenOne_95 (E), ChotaBhai_95 (E), Cjw1_96 (E), Command613_97 (E), Contagion_91 (E), Cookies_92 (E), CrystalP_94 (E), Czyszczon1_96 (E), Daikon_96 (E), DoctorDiddles_94 (E), DrDrey_95 (E), Dumbo_95 (E), Dusk_92 (E), Easy2Say_96 (E), Elite2014_94 (E), Elph10_96 (E), Emmina_95 (E), Eureka_94 (E), FairyPath_95 (E), Filch_97 (E), FireRed_99 (E), Flypotenuse_91 (E), FoghornLeghorn_89 (E), Gage_97 (E), Gator_93 (E), Gemini_100 (E), Glexan_94 (E), Goku_94 (E), GoldenSpark_99 (E), Goldilocks_98 (E), GooberAzure_98 (E), Greep_99 (E), HanKaySha_96 (E), Harella_95 (E), Henry_93 (E), Highbury_94 (E), Holt_100 (E), Hoonter_98 (E), Hopey_96 (E), HufflyPuff_97 (E), IHOP_93 (E), Icee_96 (E), Inca_92 (E), JeTaime_96 (E), Kanye_92 (E), Kimchi_99 (E), Kostya_95 (E), Lilac_98 (E), Lilizi_96 (E), Lilpickle_94 (E), MISSy_96 (E), MPhalcon_96 (E), MadamMonkfish_95 (E), Manda_97 (E), Marshmallow_93 (E), Maxxinista_98 (E), Mindy_94 (E), Miniwave_90 (E), Misfit_96 (E), Moldemort_98 (E), MollyToe_90 (E), Mosby_91 (E), Murica_98 (E), Murphy_95 (E), Myrale_95 (E), Nala_97 (E), NelitzaMV_93 (E), Nimrod_96 (E), NoSleep_96 (E), NonchalantPear_93 (E), OrionPax_94 (E), PaddyBaddy_96 (E), Palpatine_97 (E), Paperbeatsrock_94 (E), Pat3_92 (E), Petra64142_100 (E), Phaja_93 (E), Pharsalus_92 (E), PhatBacter_99 (E), Phaux_98 (E), Phrux_93 (E), Policronamos_98 (E), Porky_94 (E), Ptowny_92 (E), Pumpkin_99 (E), Quallification_96 (E), Rakim_96 (E), Rimmer_93 (E), RiverMonster_96 (E), Saints25_94 (E), Sassay_90 (E), ShamWow_95 (E), ShereKhan_93 (E), Simpliphy_94 (E), SirDuracell_95 (E), SophKB_92 (E), Sotrice96_96 (E), Stank_97 (E), Stark_97 (E), StellaBean_93 (E), StolenFromERC_98 (E), StormChicken_97 (E), TBrady12_98 (E), Tarkin_94 (E), TeamEdward_95 (E), TeardropMSU_91 (E), Teaspoon_96 (E), Terminus_98 (E),

Thimble_97 (E), Thresher_98 (E), Tomaszewski_90 (E), Toto_93 (E), Traaww1_91 (E), Tuco_96 (E), Ukulele_90 (E), Wiggin_97 (E), Willez_90 (E), Xandras_94 (E), YassJohnny_92 (E), Youngblood_98 (E), xkcd_98 (E),

Start 6:

- Found in 72 of 220 (32.7%) of genes in pham
- Manual Annotations of this start: 66 of 199
- Called 100.0% of time when present
- Phage (with cluster) where this start called: 244_97 (E), Adnama_100 (E), Amao_96 (E), Argent26_100 (E), Asriel_94 (E), Balomoji_96 (E), Barbarian_95 (E), Bask21_96 (E), Becksu_95 (E), Bench_99 (E), Brewer_91 (E), Bruin_93 (E), Buck_97 (E), Cactus_99 (E), ChotaBhai_96 (E), Contagion_92 (E), Cookies_93 (E), Czystczon1_97 (E), Daikon_97 (E), DoctorDiddles_95 (E), Dumbo_96 (E), Flypotenuse_92 (E), Gage_98 (E), Gator_94 (E), Gemini_101 (E), Glexan_95 (E), GoldenSpark_100 (E), GooberAzure_99 (E), HanKaySha_97 (E), Harella_96 (E), Holt_101 (E), Hoonter_99 (E), Hopey_97 (E), HufflyPuff_98 (E), Icee_97 (E), Kanye_93 (E), Kimchi_100 (E), Lilizi_97 (E), MISSy_97 (E), MPhalcon_97 (E), MadamMonkfish_96 (E), Mindy_95 (E), Misfit_97 (E), Moldemort_99 (E), Mosby_92 (E), Murica_99 (E), Myrale_96 (E), Nala_98 (E), OrionPax_95 (E), Pat3_93 (E), Petra64142_101 (E), Rakim_97 (E), Rimmer_94 (E), Sassay_91 (E), ShereKhan_94 (E), Simpliphy_95 (E), SirDuracell_96 (E), Sotrice96_97 (E), Stank_98 (E), StolenFromERC_99 (E), StormChicken_98 (E), TeamEdward_96 (E), Terminus_99 (E), Tomaszewski_91 (E), Traaww1_92 (E), Tuco_97 (E), Ukulele_91 (E), Wiggin_98 (E), Willez_91 (E), Xandras_95 (E), Youngblood_99 (E), xkcd_99 (E),

Summary by clusters:

There are 2 clusters represented in this pham: E, V,

Info for manual annotations of cluster E:

- Start number 5 was manually annotated 128 times for cluster E.
- Start number 6 was manually annotated 66 times for cluster E.

Info for manual annotations of cluster V:

- Start number 2 was manually annotated 5 times for cluster V.

Gene Information:

Gene: 244_97 Start: 57329, Stop: 57772, Start Num: 6

Candidate Starts for 244_97:

(Start: 6 @57329 has 66 MA's), (7, 57341), (10, 57368), (12, 57425), (15, 57500), (20, 57563), (21, 57572), (22, 57593),

Gene: 244_96 Start: 56873, Stop: 57325, Start Num: 5

Candidate Starts for 244_96:

(1, 56630), (3, 56846), (Start: 5 @56873 has 128 MA's), (10, 56912), (14, 57026), (15, 57071), (16, 57083), (18, 57101), (20, 57134), (21, 57143), (24, 57194),

Gene: ABCat_92 Start: 57560, Stop: 58012, Start Num: 5

Candidate Starts for ABCat_92:

(3, 57533), (Start: 5 @57560 has 128 MA's), (10, 57599), (14, 57713), (15, 57758), (16, 57770), (18, 57788), (20, 57821), (21, 57830), (24, 57881),

Gene: Adnama_99 Start: 57168, Stop: 57620, Start Num: 5

Candidate Starts for Adnama_99:

(3, 57141), (Start: 5 @57168 has 128 MA's), (10, 57207), (14, 57321), (15, 57366), (16, 57378), (18, 57396), (20, 57429), (21, 57438), (22, 57459), (24, 57489),

Gene: Adnama_100 Start: 57624, Stop: 58067, Start Num: 6

Candidate Starts for Adnama_100:

(Start: 6 @57624 has 66 MA's), (10, 57663), (12, 57720), (15, 57795), (20, 57858), (21, 57867), (22, 57888),

Gene: Amao_96 Start: 57137, Stop: 57580, Start Num: 6

Candidate Starts for Amao_96:

(Start: 6 @57137 has 66 MA's), (7, 57149), (10, 57176), (12, 57233), (15, 57308), (20, 57371), (21, 57380),

Gene: Amao_95 Start: 56681, Stop: 57133, Start Num: 5

Candidate Starts for Amao_95:

(3, 56654), (Start: 5 @56681 has 128 MA's), (10, 56720), (14, 56834), (15, 56879), (16, 56891), (18, 56909), (20, 56942), (21, 56951), (22, 56972), (24, 57002),

Gene: AmericanBeauty_99 Start: 57729, Stop: 58181, Start Num: 5

Candidate Starts for AmericanBeauty_99:

(3, 57702), (Start: 5 @57729 has 128 MA's), (10, 57768), (14, 57882), (15, 57927), (16, 57939), (18, 57957), (20, 57990), (21, 57999), (24, 58050),

Gene: Argent26_100 Start: 57545, Stop: 57991, Start Num: 6

Candidate Starts for Argent26_100:

(Start: 6 @57545 has 66 MA's), (7, 57557), (10, 57584), (12, 57641), (15, 57716), (20, 57779), (21, 57788), (22, 57809),

Gene: Argent26_99 Start: 57089, Stop: 57541, Start Num: 5

Candidate Starts for Argent26_99:

(3, 57062), (Start: 5 @57089 has 128 MA's), (10, 57128), (14, 57242), (15, 57287), (16, 57299), (18, 57317), (20, 57350), (21, 57359), (24, 57410),

Gene: Asriel_94 Start: 55961, Stop: 56404, Start Num: 6

Candidate Starts for Asriel_94:

(Start: 6 @55961 has 66 MA's), (10, 56000), (12, 56057), (15, 56132), (20, 56195), (21, 56204), (22, 56225),

Gene: Asriel_93 Start: 55505, Stop: 55957, Start Num: 5

Candidate Starts for Asriel_93:

(3, 55478), (Start: 5 @55505 has 128 MA's), (10, 55544), (14, 55658), (15, 55703), (16, 55715), (18, 55733), (20, 55766), (21, 55775), (22, 55796), (24, 55826),

Gene: Azrael100_137 Start: 67846, Stop: 67289, Start Num: 2

Candidate Starts for Azrael100_137:

(Start: 2 @67846 has 5 MA's), (4, 67780), (8, 67759), (9, 67753), (11, 67690), (13, 67636), (17, 67552), (19, 67507), (23, 67456), (24, 67435), (25, 67390), (26, 67354), (27, 67324),

Gene: BaboJay_95 Start: 57751, Stop: 58203, Start Num: 5

Candidate Starts for BaboJay_95:

(3, 57724), (Start: 5 @57751 has 128 MA's), (10, 57790), (14, 57904), (15, 57949), (16, 57961), (18, 57979), (20, 58012), (21, 58021), (24, 58072),

Gene: BadStone_92 Start: 57129, Stop: 57581, Start Num: 5

Candidate Starts for BadStone_92:

(3, 57102), (Start: 5 @57129 has 128 MA's), (10, 57168), (14, 57282), (15, 57327), (16, 57339), (18, 57357), (20, 57390), (21, 57399), (24, 57450),

Gene: Balomoji_95 Start: 57288, Stop: 57740, Start Num: 5

Candidate Starts for Balomoji_95:

(3, 57261), (Start: 5 @57288 has 128 MA's), (10, 57327), (14, 57441), (15, 57486), (16, 57498), (20, 57549), (21, 57558), (24, 57609),

Gene: Balomoji_96 Start: 57744, Stop: 58187, Start Num: 6

Candidate Starts for Balomoji_96:

(Start: 6 @57744 has 66 MA's), (7, 57756), (10, 57783), (12, 57840), (15, 57915), (20, 57978), (21, 57987), (22, 58008),

Gene: Barbarian_94 Start: 55505, Stop: 55957, Start Num: 5

Candidate Starts for Barbarian_94:

(3, 55478), (Start: 5 @55505 has 128 MA's), (10, 55544), (14, 55658), (15, 55703), (16, 55715), (18, 55733), (20, 55766), (21, 55775), (22, 55796), (24, 55826),

Gene: Barbarian_95 Start: 55961, Stop: 56404, Start Num: 6

Candidate Starts for Barbarian_95:

(Start: 6 @55961 has 66 MA's), (10, 56000), (12, 56057), (15, 56132), (20, 56195), (21, 56204), (22, 56225),

Gene: Bask21_95 Start: 56141, Stop: 56593, Start Num: 5

Candidate Starts for Bask21_95:

(3, 56114), (Start: 5 @56141 has 128 MA's), (10, 56180), (14, 56294), (15, 56339), (16, 56351), (18, 56369), (20, 56402), (21, 56411), (24, 56462),

Gene: Bask21_96 Start: 56597, Stop: 57043, Start Num: 6

Candidate Starts for Bask21_96:

(Start: 6 @56597 has 66 MA's), (7, 56609), (10, 56636), (12, 56693), (15, 56768), (20, 56831), (21, 56840),

Gene: Becksu_95 Start: 57937, Stop: 58380, Start Num: 6

Candidate Starts for Becksu_95:

(Start: 6 @57937 has 66 MA's), (7, 57949), (10, 57976), (12, 58033), (15, 58108), (20, 58171), (21, 58180), (22, 58201),

Gene: Becksu_94 Start: 57481, Stop: 57933, Start Num: 5

Candidate Starts for Becksu_94:

(3, 57454), (Start: 5 @57481 has 128 MA's), (10, 57520), (14, 57634), (15, 57679), (16, 57691), (18, 57709), (20, 57742), (21, 57751), (24, 57802),

Gene: Bench_98 Start: 57224, Stop: 57676, Start Num: 5

Candidate Starts for Bench_98:

(3, 57197), (Start: 5 @57224 has 128 MA's), (10, 57263), (14, 57377), (15, 57422), (16, 57434), (18, 57452), (20, 57485), (21, 57494), (24, 57545),

Gene: Bench_99 Start: 57680, Stop: 58123, Start Num: 6

Candidate Starts for Bench_99:

(Start: 6 @57680 has 66 MA's), (7, 57692), (10, 57719), (12, 57776), (15, 57851), (20, 57914), (21, 57923), (22, 57944),

Gene: BigBubba_95 Start: 56521, Stop: 56973, Start Num: 5

Candidate Starts for BigBubba_95:

(3, 56494), (Start: 5 @56521 has 128 MA's), (10, 56560), (14, 56674), (15, 56719), (16, 56731), (18, 56749), (20, 56782), (21, 56791), (22, 56812), (24, 56842),

Gene: BilboSwaggins_93 Start: 57526, Stop: 57978, Start Num: 5

Candidate Starts for BilboSwaggins_93:

(3, 57499), (Start: 5 @57526 has 128 MA's), (10, 57565), (14, 57679), (15, 57724), (16, 57736), (18, 57754), (20, 57787), (21, 57796), (24, 57847),

Gene: Bogg_95 Start: 56439, Stop: 56891, Start Num: 5

Candidate Starts for Bogg_95:

(3, 56412), (Start: 5 @56439 has 128 MA's), (10, 56478), (14, 56592), (15, 56637), (16, 56649), (18, 56667), (20, 56700), (21, 56709), (24, 56760),

Gene: Brewer_91 Start: 56482, Stop: 56925, Start Num: 6

Candidate Starts for Brewer_91:

(Start: 6 @56482 has 66 MA's), (7, 56494), (10, 56521), (12, 56578), (15, 56653), (20, 56716), (21, 56725), (22, 56746),

Gene: Brewer_90 Start: 56026, Stop: 56478, Start Num: 5

Candidate Starts for Brewer_90:

(3, 55999), (Start: 5 @56026 has 128 MA's), (10, 56065), (14, 56179), (15, 56224), (16, 56236), (18, 56254), (20, 56287), (21, 56296), (24, 56347),

Gene: Bruin_93 Start: 56559, Stop: 57002, Start Num: 6

Candidate Starts for Bruin_93:

(Start: 6 @56559 has 66 MA's), (7, 56571), (10, 56598), (12, 56655), (15, 56730), (20, 56793), (21, 56802), (22, 56823),

Gene: Bruin_92 Start: 56103, Stop: 56555, Start Num: 5

Candidate Starts for Bruin_92:

(3, 56076), (Start: 5 @56103 has 128 MA's), (10, 56142), (14, 56256), (15, 56301), (16, 56313), (18, 56331), (20, 56364), (21, 56373), (24, 56424),

Gene: Buck_97 Start: 58249, Stop: 58692, Start Num: 6

Candidate Starts for Buck_97:

(Start: 6 @58249 has 66 MA's), (7, 58261), (10, 58288), (12, 58345), (15, 58420), (20, 58483), (21, 58492),

Gene: Buck_96 Start: 57793, Stop: 58245, Start Num: 5

Candidate Starts for Buck_96:

(3, 57766), (Start: 5 @57793 has 128 MA's), (10, 57832), (14, 57946), (15, 57991), (16, 58003), (18, 58021), (20, 58054), (21, 58063), (24, 58114),

Gene: BugsBunny_95 Start: 57632, Stop: 58102, Start Num: 5

Candidate Starts for BugsBunny_95:

(3, 57605), (Start: 5 @57632 has 128 MA's), (10, 57671), (14, 57785), (15, 57830), (16, 57842), (18, 57860), (20, 57893), (21, 57902), (24, 57953),

Gene: Cactus_98 Start: 56169, Stop: 56621, Start Num: 5

Candidate Starts for Cactus_98:

(3, 56142), (Start: 5 @56169 has 128 MA's), (10, 56208), (14, 56322), (15, 56367), (16, 56379), (18, 56397), (20, 56430), (21, 56439), (22, 56460), (24, 56490),

Gene: Cactus_99 Start: 56625, Stop: 57068, Start Num: 6

Candidate Starts for Cactus_99:

(Start: 6 @56625 has 66 MA's), (10, 56664), (12, 56721), (15, 56796), (20, 56859), (21, 56868), (22, 56889),

Gene: ChosenOne_95 Start: 56584, Stop: 57036, Start Num: 5

Candidate Starts for ChosenOne_95:

(3, 56557), (Start: 5 @56584 has 128 MA's), (10, 56623), (14, 56737), (15, 56782), (16, 56794), (18, 56812), (20, 56845), (21, 56854), (24, 56905),

Gene: ChotaBhai_95 Start: 56506, Stop: 56958, Start Num: 5

Candidate Starts for ChotaBhai_95:

(3, 56479), (Start: 5 @56506 has 128 MA's), (10, 56545), (14, 56659), (15, 56704), (16, 56716), (18, 56734), (20, 56767), (21, 56776), (24, 56827),

Gene: ChotaBhai_96 Start: 56962, Stop: 57405, Start Num: 6

Candidate Starts for ChotaBhai_96:

(Start: 6 @56962 has 66 MA's), (7, 56974), (10, 57001), (12, 57058), (15, 57133), (20, 57196), (21, 57205),

Gene: Cjw1_96 Start: 58549, Stop: 59016, Start Num: 5

Candidate Starts for Cjw1_96:

(1, 58306), (3, 58522), (Start: 5 @58549 has 128 MA's), (10, 58588), (14, 58702), (15, 58747), (16, 58759), (18, 58777), (20, 58810), (21, 58819), (24, 58870),

Gene: Command613_97 Start: 57623, Stop: 58075, Start Num: 5

Candidate Starts for Command613_97:

(3, 57596), (Start: 5 @57623 has 128 MA's), (10, 57662), (14, 57776), (15, 57821), (16, 57833), (18, 57851), (20, 57884), (21, 57893), (24, 57944),

Gene: Contagion_92 Start: 56840, Stop: 57283, Start Num: 6

Candidate Starts for Contagion_92:

(Start: 6 @56840 has 66 MA's), (7, 56852), (12, 56936), (15, 57011), (20, 57074), (21, 57083), (22, 57104),

Gene: Contagion_91 Start: 56384, Stop: 56836, Start Num: 5

Candidate Starts for Contagion_91:

(3, 56357), (Start: 5 @56384 has 128 MA's), (10, 56423), (14, 56537), (15, 56582), (16, 56594), (18, 56612), (20, 56645), (21, 56654), (24, 56705),

Gene: Cookies_92 Start: 56363, Stop: 56815, Start Num: 5

Candidate Starts for Cookies_92:

(3, 56336), (Start: 5 @56363 has 128 MA's), (10, 56402), (14, 56516), (15, 56561), (16, 56573), (20, 56624), (21, 56633), (24, 56684),

Gene: Cookies_93 Start: 56819, Stop: 57262, Start Num: 6

Candidate Starts for Cookies_93:

(Start: 6 @56819 has 66 MA's), (7, 56831), (10, 56858), (12, 56915), (15, 56990), (20, 57053), (21, 57062), (22, 57083),

Gene: Cosmo_144 Start: 68009, Stop: 67452, Start Num: 2

Candidate Starts for Cosmo_144:

(Start: 2 @68009 has 5 MA's), (4, 67943), (8, 67922), (9, 67916), (11, 67853), (13, 67799), (17, 67715), (19, 67670), (23, 67619), (24, 67598), (25, 67553), (26, 67517), (27, 67487),

Gene: CrystalP_94 Start: 57526, Stop: 57978, Start Num: 5

Candidate Starts for CrystalP_94:

(3, 57499), (Start: 5 @57526 has 128 MA's), (10, 57565), (14, 57679), (15, 57724), (16, 57736), (18, 57754), (20, 57787), (21, 57796), (24, 57847),

Gene: Czyszczone1_96 Start: 57087, Stop: 57539, Start Num: 5

Candidate Starts for Czyszczone1_96:

(3, 57060), (Start: 5 @57087 has 128 MA's), (10, 57126), (14, 57240), (15, 57285), (16, 57297), (18, 57315), (20, 57348), (21, 57357), (24, 57408),

Gene: Czyszczone1_97 Start: 57543, Stop: 57986, Start Num: 6

Candidate Starts for Czyszczone1_97:

(Start: 6 @57543 has 66 MA's), (7, 57555), (10, 57582), (12, 57639), (15, 57714), (20, 57777), (21, 57786), (22, 57807),

Gene: Daikon_96 Start: 57115, Stop: 57567, Start Num: 5

Candidate Starts for Daikon_96:

(3, 57088), (Start: 5 @57115 has 128 MA's), (10, 57154), (14, 57268), (15, 57313), (16, 57325), (18, 57343), (20, 57376), (21, 57385), (24, 57436),

Gene: Daikon_97 Start: 57571, Stop: 58014, Start Num: 6

Candidate Starts for Daikon_97:

(Start: 6 @57571 has 66 MA's), (7, 57583), (10, 57610), (12, 57667), (15, 57742), (20, 57805), (21, 57814),

Gene: DoctorDiddles_95 Start: 57006, Stop: 57449, Start Num: 6

Candidate Starts for DoctorDiddles_95:

(Start: 6 @57006 has 66 MA's), (7, 57018), (10, 57045), (12, 57102), (15, 57177), (20, 57240), (21, 57249),

Gene: DoctorDiddles_94 Start: 56550, Stop: 57002, Start Num: 5

Candidate Starts for DoctorDiddles_94:

(3, 56523), (Start: 5 @56550 has 128 MA's), (10, 56589), (14, 56703), (15, 56748), (16, 56760), (18, 56778), (20, 56811), (21, 56820), (24, 56871),

Gene: DrDrey_95 Start: 58006, Stop: 58458, Start Num: 5

Candidate Starts for DrDrey_95:

(3, 57979), (Start: 5 @58006 has 128 MA's), (10, 58045), (14, 58159), (15, 58204), (16, 58216), (18, 58234), (20, 58267), (21, 58276), (24, 58327),

Gene: Dumbo_95 Start: 56486, Stop: 56938, Start Num: 5

Candidate Starts for Dumbo_95:

(3, 56459), (Start: 5 @56486 has 128 MA's), (10, 56525), (14, 56639), (15, 56684), (16, 56696), (18, 56714), (20, 56747), (21, 56756), (24, 56807),

Gene: Dumbo_96 Start: 56942, Stop: 57385, Start Num: 6

Candidate Starts for Dumbo_96:

(Start: 6 @56942 has 66 MA's), (7, 56954), (10, 56981), (12, 57038), (15, 57113), (20, 57176), (21, 57185), (22, 57206),

Gene: Dusk_92 Start: 56789, Stop: 57241, Start Num: 5

Candidate Starts for Dusk_92:

(3, 56762), (Start: 5 @56789 has 128 MA's), (10, 56828), (14, 56942), (15, 56987), (16, 56999), (18, 57017), (20, 57050), (21, 57059), (24, 57110),

Gene: Easy2Say_96 Start: 57988, Stop: 58458, Start Num: 5

Candidate Starts for Easy2Say_96:

(3, 57961), (Start: 5 @57988 has 128 MA's), (10, 58027), (14, 58141), (15, 58186), (16, 58198), (18, 58216), (20, 58249), (21, 58258), (24, 58309),

Gene: Elite2014_94 Start: 56583, Stop: 57035, Start Num: 5

Candidate Starts for Elite2014_94:

(3, 56556), (Start: 5 @56583 has 128 MA's), (10, 56622), (14, 56736), (15, 56781), (16, 56793), (18, 56811), (20, 56844), (21, 56853), (24, 56904),

Gene: Elph10_96 Start: 56576, Stop: 57046, Start Num: 5

Candidate Starts for Elph10_96:

(3, 56549), (Start: 5 @56576 has 128 MA's), (10, 56615), (14, 56729), (15, 56774), (16, 56786), (18, 56804), (20, 56837), (21, 56846), (24, 56897),

Gene: Emmina_95 Start: 56209, Stop: 56661, Start Num: 5

Candidate Starts for Emmina_95:

(3, 56182), (Start: 5 @56209 has 128 MA's), (10, 56248), (14, 56362), (15, 56407), (16, 56419), (18, 56437), (20, 56470), (21, 56479), (24, 56530),

Gene: EniyanLRS_137 Start: 68351, Stop: 67797, Start Num: 2

Candidate Starts for EniyanLRS_137:

(Start: 2 @68351 has 5 MA's), (4, 68285), (8, 68264), (11, 68195), (13, 68141), (17, 68057), (19, 68015), (23, 67964), (24, 67943), (25, 67898), (26, 67862), (27, 67832),

Gene: Eureka_94 Start: 57496, Stop: 57948, Start Num: 5

Candidate Starts for Eureka_94:

(3, 57469), (Start: 5 @57496 has 128 MA's), (10, 57535), (14, 57649), (15, 57694), (16, 57706), (18, 57724), (20, 57757), (21, 57766), (24, 57817),

Gene: FairyPath_95 Start: 57702, Stop: 58154, Start Num: 5

Candidate Starts for FairyPath_95:

(3, 57675), (Start: 5 @57702 has 128 MA's), (10, 57741), (14, 57855), (15, 57900), (16, 57912), (18, 57930), (20, 57963), (21, 57972), (24, 58023),

Gene: Filch_97 Start: 56781, Stop: 57233, Start Num: 5

Candidate Starts for Filch_97:

(3, 56754), (Start: 5 @56781 has 128 MA's), (10, 56820), (14, 56934), (15, 56979), (16, 56991), (18, 57009), (20, 57042), (21, 57051), (24, 57102),

Gene: FireRed_99 Start: 57799, Stop: 58242, Start Num: 5

Candidate Starts for FireRed_99:

(3, 57772), (Start: 5 @57799 has 128 MA's), (10, 57838), (12, 57895), (20, 58033), (21, 58042), (22, 58063),

Gene: Flypotenuse_92 Start: 56615, Stop: 57058, Start Num: 6

Candidate Starts for Flypotenuse_92:

(Start: 6 @56615 has 66 MA's), (10, 56654), (12, 56711), (15, 56786), (20, 56849), (21, 56858), (22, 56879),

Gene: Flypotenuse_91 Start: 56159, Stop: 56611, Start Num: 5

Candidate Starts for Flypotenuse_91:

(3, 56132), (Start: 5 @56159 has 128 MA's), (10, 56198), (14, 56312), (15, 56357), (16, 56369), (18, 56387), (20, 56420), (21, 56429), (22, 56450), (24, 56480),

Gene: FoghornLeghorn_89 Start: 55185, Stop: 55637, Start Num: 5

Candidate Starts for FoghornLeghorn_89:

(3, 55158), (Start: 5 @55185 has 128 MA's), (10, 55224), (14, 55338), (15, 55383), (16, 55395), (20, 55446), (21, 55455), (24, 55506),

Gene: Gage_97 Start: 57230, Stop: 57682, Start Num: 5

Candidate Starts for Gage_97:

(3, 57203), (Start: 5 @57230 has 128 MA's), (10, 57269), (14, 57383), (15, 57428), (16, 57440), (18, 57458), (20, 57491), (21, 57500), (24, 57551),

Gene: Gage_98 Start: 57686, Stop: 58129, Start Num: 6

Candidate Starts for Gage_98:

(Start: 6 @57686 has 66 MA's), (7, 57698), (10, 57725), (12, 57782), (15, 57857), (20, 57920), (21, 57929), (22, 57950),

Gene: Gator_93 Start: 57015, Stop: 57467, Start Num: 5

Candidate Starts for Gator_93:

(3, 56988), (Start: 5 @57015 has 128 MA's), (10, 57054), (14, 57168), (15, 57213), (16, 57225), (20, 57276), (21, 57285), (24, 57336),

Gene: Gator_94 Start: 57471, Stop: 57914, Start Num: 6

Candidate Starts for Gator_94:

(Start: 6 @57471 has 66 MA's), (7, 57483), (10, 57510), (12, 57567), (15, 57642), (20, 57705), (21, 57714), (22, 57735),

Gene: Gemini_100 Start: 57606, Stop: 58058, Start Num: 5

Candidate Starts for Gemini_100:

(3, 57579), (Start: 5 @57606 has 128 MA's), (10, 57645), (14, 57759), (15, 57804), (16, 57816), (18, 57834), (20, 57867), (21, 57876), (24, 57927),

Gene: Gemini_101 Start: 58062, Stop: 58508, Start Num: 6

Candidate Starts for Gemini_101:

(Start: 6 @58062 has 66 MA's), (7, 58074), (10, 58101), (12, 58158), (15, 58233), (20, 58296), (21, 58305), (22, 58326),

Gene: Glexan_94 Start: 57289, Stop: 57741, Start Num: 5
Candidate Starts for Glexan_94:
(3, 57262), (Start: 5 @57289 has 128 MA's), (10, 57328), (14, 57442), (15, 57487), (16, 57499), (18, 57517), (20, 57550), (21, 57559), (22, 57580), (24, 57610),

Gene: Glexan_95 Start: 57745, Stop: 58188, Start Num: 6
Candidate Starts for Glexan_95:
(Start: 6 @57745 has 66 MA's), (10, 57784), (12, 57841), (15, 57916), (20, 57979), (21, 57988), (22, 58009),

Gene: Goku_94 Start: 57225, Stop: 57677, Start Num: 5
Candidate Starts for Goku_94:
(3, 57198), (Start: 5 @57225 has 128 MA's), (10, 57264), (14, 57378), (15, 57423), (16, 57435), (18, 57453), (20, 57486), (21, 57495), (24, 57546),

Gene: GoldenSpark_99 Start: 57089, Stop: 57541, Start Num: 5
Candidate Starts for GoldenSpark_99:
(3, 57062), (Start: 5 @57089 has 128 MA's), (10, 57128), (14, 57242), (15, 57287), (16, 57299), (18, 57317), (20, 57350), (21, 57359), (24, 57410),

Gene: GoldenSpark_100 Start: 57545, Stop: 57991, Start Num: 6
Candidate Starts for GoldenSpark_100:
(Start: 6 @57545 has 66 MA's), (7, 57557), (10, 57584), (12, 57641), (15, 57716), (20, 57779), (21, 57788), (22, 57809),

Gene: Goldilocks_98 Start: 56447, Stop: 56899, Start Num: 5
Candidate Starts for Goldilocks_98:
(3, 56420), (Start: 5 @56447 has 128 MA's), (10, 56486), (14, 56600), (15, 56645), (16, 56657), (18, 56675), (20, 56708), (21, 56717), (24, 56768),

Gene: GooberAzure_98 Start: 57089, Stop: 57541, Start Num: 5
Candidate Starts for GooberAzure_98:
(3, 57062), (Start: 5 @57089 has 128 MA's), (10, 57128), (14, 57242), (15, 57287), (16, 57299), (18, 57317), (20, 57350), (21, 57359), (24, 57410),

Gene: GooberAzure_99 Start: 57545, Stop: 57991, Start Num: 6
Candidate Starts for GooberAzure_99:
(Start: 6 @57545 has 66 MA's), (7, 57557), (10, 57584), (12, 57641), (15, 57716), (20, 57779), (21, 57788), (22, 57809),

Gene: Greep_99 Start: 58363, Stop: 58815, Start Num: 5
Candidate Starts for Greep_99:
(3, 58336), (Start: 5 @58363 has 128 MA's), (10, 58402), (14, 58516), (15, 58561), (16, 58573), (18, 58591), (20, 58624), (21, 58633), (24, 58684),

Gene: HanKaySha_97 Start: 57112, Stop: 57555, Start Num: 6
Candidate Starts for HanKaySha_97:
(Start: 6 @57112 has 66 MA's), (7, 57124), (10, 57151), (12, 57208), (15, 57283), (20, 57346), (21, 57355), (22, 57376),

Gene: HanKaySha_96 Start: 56656, Stop: 57108, Start Num: 5
Candidate Starts for HanKaySha_96:

(3, 56629), (Start: 5 @56656 has 128 MA's), (10, 56695), (14, 56809), (15, 56854), (16, 56866), (18, 56884), (20, 56917), (21, 56926), (24, 56977),

Gene: Harella_96 Start: 58261, Stop: 58704, Start Num: 6

Candidate Starts for Harella_96:

(Start: 6 @58261 has 66 MA's), (7, 58273), (10, 58300), (12, 58357), (15, 58432), (20, 58495), (21, 58504), (22, 58525),

Gene: Harella_95 Start: 57805, Stop: 58257, Start Num: 5

Candidate Starts for Harella_95:

(3, 57778), (Start: 5 @57805 has 128 MA's), (10, 57844), (14, 57958), (15, 58003), (16, 58015), (18, 58033), (20, 58066), (21, 58075), (22, 58096), (24, 58126),

Gene: Henry_93 Start: 56966, Stop: 57409, Start Num: 5

Candidate Starts for Henry_93:

(3, 56939), (Start: 5 @56966 has 128 MA's), (10, 57005), (12, 57062), (15, 57137), (20, 57200), (21, 57209), (22, 57230),

Gene: Highbury_94 Start: 56656, Stop: 57126, Start Num: 5

Candidate Starts for Highbury_94:

(3, 56629), (Start: 5 @56656 has 128 MA's), (10, 56695), (14, 56809), (15, 56854), (16, 56866), (18, 56884), (20, 56917), (21, 56926), (24, 56977),

Gene: Holt_100 Start: 57503, Stop: 57955, Start Num: 5

Candidate Starts for Holt_100:

(3, 57476), (Start: 5 @57503 has 128 MA's), (10, 57542), (14, 57656), (15, 57701), (16, 57713), (18, 57731), (20, 57764), (21, 57773), (24, 57824),

Gene: Holt_101 Start: 57959, Stop: 58405, Start Num: 6

Candidate Starts for Holt_101:

(Start: 6 @57959 has 66 MA's), (7, 57971), (10, 57998), (12, 58055), (15, 58130), (20, 58193), (21, 58202), (22, 58223),

Gene: Hoonter_98 Start: 56961, Stop: 57413, Start Num: 5

Candidate Starts for Hoonter_98:

(3, 56934), (Start: 5 @56961 has 128 MA's), (10, 57000), (14, 57114), (15, 57159), (16, 57171), (18, 57189), (20, 57222), (21, 57231), (24, 57282),

Gene: Hoonter_99 Start: 57417, Stop: 57860, Start Num: 6

Candidate Starts for Hoonter_99:

(Start: 6 @57417 has 66 MA's), (7, 57429), (10, 57456), (12, 57513), (15, 57588), (20, 57651), (21, 57660), (22, 57681),

Gene: Hopecy_96 Start: 57467, Stop: 57919, Start Num: 5

Candidate Starts for Hopecy_96:

(3, 57440), (Start: 5 @57467 has 128 MA's), (10, 57506), (14, 57620), (15, 57665), (16, 57677), (18, 57695), (20, 57728), (21, 57737), (24, 57788),

Gene: Hopecy_97 Start: 57923, Stop: 58366, Start Num: 6

Candidate Starts for Hopecy_97:

(Start: 6 @57923 has 66 MA's), (7, 57935), (10, 57962), (12, 58019), (15, 58094), (20, 58157), (21, 58166), (22, 58187),

Gene: HufflyPuff_97 Start: 57551, Stop: 58003, Start Num: 5

Candidate Starts for HufflyPuff_97:

(3, 57524), (Start: 5 @57551 has 128 MA's), (10, 57590), (14, 57704), (15, 57749), (16, 57761), (18, 57779), (20, 57812), (21, 57821), (24, 57872),

Gene: HufflyPuff_98 Start: 58007, Stop: 58450, Start Num: 6

Candidate Starts for HufflyPuff_98:

(Start: 6 @58007 has 66 MA's), (7, 58019), (10, 58046), (12, 58103), (20, 58241), (21, 58250), (22, 58271),

Gene: IHOP_93 Start: 57129, Stop: 57581, Start Num: 5

Candidate Starts for IHOP_93:

(3, 57102), (Start: 5 @57129 has 128 MA's), (10, 57168), (14, 57282), (15, 57327), (16, 57339), (18, 57357), (20, 57390), (21, 57399), (24, 57450),

Gene: Icee_96 Start: 56616, Stop: 57068, Start Num: 5

Candidate Starts for Icee_96:

(3, 56589), (Start: 5 @56616 has 128 MA's), (10, 56655), (14, 56769), (15, 56814), (16, 56826), (18, 56844), (20, 56877), (21, 56886), (22, 56907), (24, 56937),

Gene: Icee_97 Start: 57072, Stop: 57515, Start Num: 6

Candidate Starts for Icee_97:

(Start: 6 @57072 has 66 MA's), (10, 57111), (12, 57168), (15, 57243), (20, 57306), (21, 57315), (22, 57336),

Gene: Inca_92 Start: 55618, Stop: 56070, Start Num: 5

Candidate Starts for Inca_92:

(3, 55591), (Start: 5 @55618 has 128 MA's), (10, 55657), (14, 55771), (15, 55816), (16, 55828), (18, 55846), (20, 55879), (21, 55888), (24, 55939),

Gene: JeTaime_96 Start: 57820, Stop: 58290, Start Num: 5

Candidate Starts for JeTaime_96:

(1, 57577), (3, 57793), (Start: 5 @57820 has 128 MA's), (10, 57859), (14, 57973), (15, 58018), (16, 58030), (18, 58048), (20, 58081), (21, 58090), (24, 58141),

Gene: Kanye_93 Start: 57169, Stop: 57612, Start Num: 6

Candidate Starts for Kanye_93:

(Start: 6 @57169 has 66 MA's), (7, 57181), (10, 57208), (12, 57265), (15, 57340), (20, 57403), (21, 57412), (22, 57433),

Gene: Kanye_92 Start: 56713, Stop: 57165, Start Num: 5

Candidate Starts for Kanye_92:

(3, 56686), (Start: 5 @56713 has 128 MA's), (10, 56752), (14, 56866), (15, 56911), (16, 56923), (18, 56941), (20, 56974), (21, 56983), (24, 57034),

Gene: Kimchi_99 Start: 57233, Stop: 57685, Start Num: 5

Candidate Starts for Kimchi_99:

(3, 57206), (Start: 5 @57233 has 128 MA's), (10, 57272), (14, 57386), (15, 57431), (16, 57443), (18, 57461), (20, 57494), (21, 57503), (24, 57554),

Gene: Kimchi_100 Start: 57689, Stop: 58132, Start Num: 6

Candidate Starts for Kimchi_100:

(Start: 6 @57689 has 66 MA's), (7, 57701), (10, 57728), (12, 57785), (15, 57860), (20, 57923), (21, 57932), (22, 57953),

Gene: Kostya_95 Start: 57231, Stop: 57683, Start Num: 5

Candidate Starts for Kostya_95:

(3, 57204), (Start: 5 @57231 has 128 MA's), (10, 57270), (14, 57384), (15, 57429), (16, 57441), (18, 57459), (20, 57492), (21, 57501), (24, 57552),

Gene: Lilac_98 Start: 57058, Stop: 57528, Start Num: 5

Candidate Starts for Lilac_98:

(3, 57031), (Start: 5 @57058 has 128 MA's), (10, 57097), (14, 57211), (15, 57256), (16, 57268), (18, 57286), (20, 57319), (21, 57328), (24, 57379),

Gene: Lilizi_97 Start: 57151, Stop: 57594, Start Num: 6

Candidate Starts for Lilizi_97:

(Start: 6 @57151 has 66 MA's), (7, 57163), (10, 57190), (12, 57247), (15, 57322), (20, 57385), (21, 57394), (22, 57415),

Gene: Lilizi_96 Start: 56695, Stop: 57147, Start Num: 5

Candidate Starts for Lilizi_96:

(3, 56668), (Start: 5 @56695 has 128 MA's), (10, 56734), (14, 56848), (15, 56893), (16, 56905), (18, 56923), (20, 56956), (21, 56965), (24, 57016),

Gene: Lilpickle_94 Start: 56583, Stop: 57035, Start Num: 5

Candidate Starts for Lilpickle_94:

(3, 56556), (Start: 5 @56583 has 128 MA's), (10, 56622), (14, 56736), (15, 56781), (16, 56793), (18, 56811), (20, 56844), (21, 56853), (24, 56904),

Gene: MISSy_96 Start: 56811, Stop: 57263, Start Num: 5

Candidate Starts for MISSy_96:

(3, 56784), (Start: 5 @56811 has 128 MA's), (10, 56850), (14, 56964), (15, 57009), (16, 57021), (18, 57039), (20, 57072), (21, 57081), (24, 57132),

Gene: MISSy_97 Start: 57267, Stop: 57710, Start Num: 6

Candidate Starts for MISSy_97:

(Start: 6 @57267 has 66 MA's), (7, 57279), (10, 57306), (12, 57363), (15, 57438), (20, 57501), (21, 57510), (22, 57531),

Gene: MPhalcon_96 Start: 56804, Stop: 57256, Start Num: 5

Candidate Starts for MPhalcon_96:

(3, 56777), (Start: 5 @56804 has 128 MA's), (10, 56843), (14, 56957), (15, 57002), (16, 57014), (18, 57032), (20, 57065), (21, 57074), (24, 57125),

Gene: MPhalcon_97 Start: 57260, Stop: 57703, Start Num: 6

Candidate Starts for MPhalcon_97:

(Start: 6 @57260 has 66 MA's), (7, 57272), (10, 57299), (12, 57356), (15, 57431), (20, 57494), (21, 57503), (22, 57524),

Gene: MadamMonkfish_96 Start: 56766, Stop: 57209, Start Num: 6

Candidate Starts for MadamMonkfish_96:

(Start: 6 @56766 has 66 MA's), (7, 56778), (10, 56805), (12, 56862), (15, 56937), (20, 57000), (21, 57009), (22, 57030),

Gene: MadamMonkfish_95 Start: 56310, Stop: 56762, Start Num: 5

Candidate Starts for MadamMonkfish_95:

(3, 56283), (Start: 5 @56310 has 128 MA's), (10, 56349), (14, 56463), (15, 56508), (16, 56520), (18, 56538), (20, 56571), (21, 56580), (24, 56631),

Gene: Manda_97 Start: 58387, Stop: 58839, Start Num: 5

Candidate Starts for Manda_97:

(3, 58360), (Start: 5 @58387 has 128 MA's), (10, 58426), (14, 58540), (15, 58585), (16, 58597), (18, 58615), (20, 58648), (21, 58657), (24, 58708),

Gene: Marshmallow_93 Start: 57859, Stop: 58329, Start Num: 5

Candidate Starts for Marshmallow_93:

(3, 57832), (Start: 5 @57859 has 128 MA's), (10, 57898), (14, 58012), (15, 58057), (16, 58069), (18, 58087), (20, 58120), (21, 58129), (24, 58180),

Gene: MaryV_130 Start: 66197, Stop: 65640, Start Num: 2

Candidate Starts for MaryV_130:

(Start: 2 @66197 has 5 MA's), (4, 66131), (8, 66110), (9, 66104), (11, 66041), (13, 65987), (17, 65903), (19, 65858), (23, 65807), (24, 65786), (25, 65741), (26, 65705), (27, 65675),

Gene: Maxxinista_98 Start: 57225, Stop: 57695, Start Num: 5

Candidate Starts for Maxxinista_98:

(3, 57198), (Start: 5 @57225 has 128 MA's), (10, 57264), (14, 57378), (15, 57423), (16, 57435), (18, 57453), (20, 57486), (21, 57495), (24, 57546),

Gene: Mindy_94 Start: 56132, Stop: 56584, Start Num: 5

Candidate Starts for Mindy_94:

(3, 56105), (Start: 5 @56132 has 128 MA's), (10, 56171), (14, 56285), (15, 56330), (16, 56342), (18, 56360), (20, 56393), (21, 56402), (24, 56453),

Gene: Mindy_95 Start: 56588, Stop: 57031, Start Num: 6

Candidate Starts for Mindy_95:

(Start: 6 @56588 has 66 MA's), (7, 56600), (10, 56627), (12, 56684), (15, 56759), (20, 56822), (21, 56831), (22, 56852),

Gene: Miniwave_90 Start: 56627, Stop: 57079, Start Num: 5

Candidate Starts for Miniwave_90:

(3, 56600), (Start: 5 @56627 has 128 MA's), (10, 56666), (14, 56780), (15, 56825), (16, 56837), (18, 56855), (20, 56888), (21, 56897), (24, 56948),

Gene: Misfit_96 Start: 58101, Stop: 58553, Start Num: 5

Candidate Starts for Misfit_96:

(3, 58074), (Start: 5 @58101 has 128 MA's), (10, 58140), (14, 58254), (15, 58299), (16, 58311), (18, 58329), (20, 58362), (21, 58371), (24, 58422),

Gene: Misfit_97 Start: 58557, Stop: 59000, Start Num: 6

Candidate Starts for Misfit_97:

(Start: 6 @58557 has 66 MA's), (7, 58569), (10, 58596), (12, 58653), (15, 58728), (20, 58791), (21, 58800), (22, 58821),

Gene: Moldemort_98 Start: 56768, Stop: 57220, Start Num: 5

Candidate Starts for Moldemort_98:

(3, 56741), (Start: 5 @56768 has 128 MA's), (10, 56807), (14, 56921), (15, 56966), (16, 56978), (18, 56996), (20, 57029), (21, 57038), (24, 57089),

Gene: Moldemort_99 Start: 57224, Stop: 57667, Start Num: 6

Candidate Starts for Moldemort_99:

(Start: 6 @57224 has 66 MA's), (7, 57236), (10, 57263), (12, 57320), (15, 57395), (20, 57458), (21, 57467), (22, 57488),

Gene: MollyToe_90 Start: 55650, Stop: 56102, Start Num: 5

Candidate Starts for MollyToe_90:

(3, 55623), (Start: 5 @55650 has 128 MA's), (10, 55689), (14, 55803), (15, 55848), (16, 55860), (18, 55878), (20, 55911), (21, 55920), (24, 55971),

Gene: Mosby_92 Start: 56840, Stop: 57283, Start Num: 6

Candidate Starts for Mosby_92:

(Start: 6 @56840 has 66 MA's), (7, 56852), (10, 56879), (12, 56936), (15, 57011), (20, 57074), (21, 57083), (22, 57104),

Gene: Mosby_91 Start: 56384, Stop: 56836, Start Num: 5

Candidate Starts for Mosby_91:

(3, 56357), (Start: 5 @56384 has 128 MA's), (10, 56423), (14, 56537), (15, 56582), (16, 56594), (18, 56612), (20, 56645), (21, 56654), (24, 56705),

Gene: Murica_98 Start: 58027, Stop: 58479, Start Num: 5

Candidate Starts for Murica_98:

(3, 58000), (Start: 5 @58027 has 128 MA's), (10, 58066), (14, 58180), (15, 58225), (16, 58237), (18, 58255), (20, 58288), (21, 58297), (24, 58348),

Gene: Murica_99 Start: 58483, Stop: 58926, Start Num: 6

Candidate Starts for Murica_99:

(Start: 6 @58483 has 66 MA's), (7, 58495), (10, 58522), (12, 58579), (20, 58717), (21, 58726), (22, 58747),

Gene: Murphy_95 Start: 57468, Stop: 57920, Start Num: 5

Candidate Starts for Murphy_95:

(3, 57441), (Start: 5 @57468 has 128 MA's), (10, 57507), (14, 57621), (15, 57666), (16, 57678), (18, 57696), (20, 57729), (21, 57738), (24, 57789),

Gene: Myrale_96 Start: 58046, Stop: 58489, Start Num: 6

Candidate Starts for Myrale_96:

(Start: 6 @58046 has 66 MA's), (7, 58058), (10, 58085), (12, 58142), (15, 58217), (20, 58280), (21, 58289), (22, 58310),

Gene: Myrale_95 Start: 57590, Stop: 58042, Start Num: 5

Candidate Starts for Myrale_95:

(3, 57563), (Start: 5 @57590 has 128 MA's), (10, 57629), (14, 57743), (15, 57788), (16, 57800), (18, 57818), (20, 57851), (21, 57860), (24, 57911),

Gene: Nala_98 Start: 57769, Stop: 58212, Start Num: 6

Candidate Starts for Nala_98:

(Start: 6 @57769 has 66 MA's), (7, 57781), (10, 57808), (12, 57865), (15, 57940), (20, 58003), (21, 58012), (22, 58033),

Gene: Nala_97 Start: 57313, Stop: 57765, Start Num: 5

Candidate Starts for Nala_97:

(3, 57286), (Start: 5 @57313 has 128 MA's), (10, 57352), (14, 57466), (15, 57511), (16, 57523), (18, 57541), (20, 57574), (21, 57583), (24, 57634),

Gene: NelitzaMV_93 Start: 56673, Stop: 57125, Start Num: 5

Candidate Starts for NelitzaMV_93:

(3, 56646), (Start: 5 @56673 has 128 MA's), (10, 56712), (14, 56826), (15, 56871), (16, 56883), (18, 56901), (20, 56934), (21, 56943), (24, 56994),

Gene: Nimrod_96 Start: 58016, Stop: 58456, Start Num: 5

Candidate Starts for Nimrod_96:

(3, 57989), (Start: 5 @58016 has 128 MA's), (10, 58055), (12, 58112), (20, 58250), (21, 58259), (22, 58280),

Gene: NoSleep_96 Start: 56650, Stop: 57102, Start Num: 5

Candidate Starts for NoSleep_96:

(3, 56623), (Start: 5 @56650 has 128 MA's), (10, 56689), (14, 56803), (15, 56848), (16, 56860), (18, 56878), (20, 56911), (21, 56920), (24, 56971),

Gene: NonchalantPear_93 Start: 56506, Stop: 56958, Start Num: 5

Candidate Starts for NonchalantPear_93:

(3, 56479), (Start: 5 @56506 has 128 MA's), (10, 56545), (14, 56659), (15, 56704), (16, 56716), (18, 56734), (20, 56767), (21, 56776), (24, 56827),

Gene: OrionPax_94 Start: 56401, Stop: 56853, Start Num: 5

Candidate Starts for OrionPax_94:

(3, 56374), (Start: 5 @56401 has 128 MA's), (10, 56440), (14, 56554), (15, 56599), (16, 56611), (18, 56629), (20, 56662), (21, 56671), (24, 56722),

Gene: OrionPax_95 Start: 56857, Stop: 57300, Start Num: 6

Candidate Starts for OrionPax_95:

(Start: 6 @56857 has 66 MA's), (7, 56869), (10, 56896), (12, 56953), (15, 57028), (20, 57091), (21, 57100), (22, 57121),

Gene: PaddyBaddy_96 Start: 56949, Stop: 57419, Start Num: 5

Candidate Starts for PaddyBaddy_96:

(3, 56922), (Start: 5 @56949 has 128 MA's), (10, 56988), (14, 57102), (15, 57147), (16, 57159), (18, 57177), (20, 57210), (21, 57219), (24, 57270),

Gene: Palpatine_97 Start: 58054, Stop: 58497, Start Num: 5

Candidate Starts for Palpatine_97:

(3, 58027), (Start: 5 @58054 has 128 MA's), (10, 58093), (12, 58150), (20, 58288), (21, 58297), (22, 58318),

Gene: Paperbeatsrock_94 Start: 57305, Stop: 57757, Start Num: 5

Candidate Starts for Paperbeatsrock_94:

(3, 57278), (Start: 5 @57305 has 128 MA's), (10, 57344), (14, 57458), (15, 57503), (16, 57515), (18, 57533), (20, 57566), (21, 57575), (24, 57626),

Gene: Pat3_92 Start: 55504, Stop: 55956, Start Num: 5

Candidate Starts for Pat3_92:

(3, 55477), (Start: 5 @55504 has 128 MA's), (10, 55543), (14, 55657), (15, 55702), (16, 55714), (18, 55732), (20, 55765), (21, 55774), (24, 55825),

Gene: Pat3_93 Start: 55960, Stop: 56406, Start Num: 6

Candidate Starts for Pat3_93:

(Start: 6 @55960 has 66 MA's), (7, 55972), (10, 55999), (12, 56056), (15, 56131), (20, 56194), (21, 56203), (22, 56224),

Gene: Petra64142_100 Start: 58509, Stop: 58961, Start Num: 5

Candidate Starts for Petra64142_100:

(3, 58482), (Start: 5 @58509 has 128 MA's), (10, 58548), (14, 58662), (15, 58707), (16, 58719), (18, 58737), (20, 58770), (21, 58779), (24, 58830),

Gene: Petra64142_101 Start: 58965, Stop: 59408, Start Num: 6

Candidate Starts for Petra64142_101:

(Start: 6 @58965 has 66 MA's), (7, 58977), (10, 59004), (12, 59061), (15, 59136), (20, 59199), (21, 59208),

Gene: Phaja_93 Start: 57131, Stop: 57583, Start Num: 5

Candidate Starts for Phaja_93:

(3, 57104), (Start: 5 @57131 has 128 MA's), (10, 57170), (14, 57284), (15, 57329), (16, 57341), (18, 57359), (20, 57392), (21, 57401), (24, 57452),

Gene: Pharsalus_92 Start: 57105, Stop: 57557, Start Num: 5

Candidate Starts for Pharsalus_92:

(3, 57078), (Start: 5 @57105 has 128 MA's), (10, 57144), (14, 57258), (15, 57303), (16, 57315), (18, 57333), (20, 57366), (21, 57375), (24, 57426),

Gene: PhatBacter_99 Start: 57799, Stop: 58242, Start Num: 5

Candidate Starts for PhatBacter_99:

(3, 57772), (Start: 5 @57799 has 128 MA's), (10, 57838), (12, 57895), (20, 58033), (21, 58042), (22, 58063),

Gene: Phaux_98 Start: 58341, Stop: 58811, Start Num: 5

Candidate Starts for Phaux_98:

(3, 58314), (Start: 5 @58341 has 128 MA's), (10, 58380), (14, 58494), (15, 58539), (16, 58551), (18, 58569), (20, 58602), (21, 58611), (24, 58662),

Gene: Phrux_93 Start: 56617, Stop: 57087, Start Num: 5

Candidate Starts for Phrux_93:

(3, 56590), (Start: 5 @56617 has 128 MA's), (10, 56656), (14, 56770), (15, 56815), (16, 56827), (18, 56845), (20, 56878), (21, 56887), (24, 56938),

Gene: Policronamos_98 Start: 58072, Stop: 58515, Start Num: 5

Candidate Starts for Policronamos_98:

(3, 58045), (Start: 5 @58072 has 128 MA's), (10, 58111), (12, 58168), (20, 58306), (21, 58315), (22, 58336),

Gene: Porky_94 Start: 56217, Stop: 56669, Start Num: 5

Candidate Starts for Porky_94:

(3, 56190), (Start: 5 @56217 has 128 MA's), (10, 56256), (14, 56370), (15, 56415), (16, 56427), (18, 56445), (20, 56478), (21, 56487), (24, 56538),

Gene: Ptowny_92 Start: 55967, Stop: 56419, Start Num: 5

Candidate Starts for Ptowny_92:

(3, 55940), (Start: 5 @55967 has 128 MA's), (10, 56006), (14, 56120), (15, 56165), (16, 56177), (18, 56195), (20, 56228), (21, 56237), (24, 56288),

Gene: Pumpkin_99 Start: 57993, Stop: 58463, Start Num: 5

Candidate Starts for Pumpkin_99:

(3, 57966), (Start: 5 @57993 has 128 MA's), (10, 58032), (14, 58146), (15, 58191), (16, 58203), (18, 58221), (20, 58254), (21, 58263), (24, 58314),

Gene: Quallification_96 Start: 57713, Stop: 58165, Start Num: 5

Candidate Starts for Quallification_96:

(3, 57686), (Start: 5 @57713 has 128 MA's), (10, 57752), (14, 57866), (15, 57911), (16, 57923), (18, 57941), (20, 57974), (21, 57983), (24, 58034),

Gene: Rakim_97 Start: 57498, Stop: 57941, Start Num: 6

Candidate Starts for Rakim_97:

(Start: 6 @57498 has 66 MA's), (7, 57510), (10, 57537), (12, 57594), (15, 57669), (20, 57732), (21, 57741), (22, 57762),

Gene: Rakim_96 Start: 57042, Stop: 57494, Start Num: 5

Candidate Starts for Rakim_96:

(3, 57015), (Start: 5 @57042 has 128 MA's), (10, 57081), (14, 57195), (15, 57240), (16, 57252), (18, 57270), (20, 57303), (21, 57312), (24, 57363),

Gene: Rimmer_94 Start: 57071, Stop: 57517, Start Num: 6

Candidate Starts for Rimmer_94:

(Start: 6 @57071 has 66 MA's), (7, 57083), (10, 57110), (12, 57167), (15, 57242), (20, 57305), (21, 57314),

Gene: Rimmer_93 Start: 56615, Stop: 57067, Start Num: 5

Candidate Starts for Rimmer_93:

(1, 56372), (3, 56588), (Start: 5 @56615 has 128 MA's), (10, 56654), (14, 56768), (15, 56813), (16, 56825), (18, 56843), (20, 56876), (21, 56885), (24, 56936),

Gene: RiverMonster_96 Start: 57513, Stop: 57983, Start Num: 5

Candidate Starts for RiverMonster_96:

(3, 57486), (Start: 5 @57513 has 128 MA's), (10, 57552), (14, 57666), (15, 57711), (16, 57723), (18, 57741), (20, 57774), (21, 57783), (24, 57834),

Gene: Saints25_94 Start: 56656, Stop: 57126, Start Num: 5

Candidate Starts for Saints25_94:

(3, 56629), (Start: 5 @56656 has 128 MA's), (10, 56695), (14, 56809), (15, 56854), (16, 56866), (18, 56884), (20, 56917), (21, 56926), (24, 56977),

Gene: Sassay_90 Start: 55346, Stop: 55798, Start Num: 5

Candidate Starts for Sassay_90:

(3, 55319), (Start: 5 @55346 has 128 MA's), (10, 55385), (14, 55499), (15, 55544), (16, 55556), (18, 55574), (20, 55607), (21, 55616), (24, 55667),

Gene: Sassay_91 Start: 55802, Stop: 56245, Start Num: 6

Candidate Starts for Sassay_91:

(Start: 6 @55802 has 66 MA's), (7, 55814), (10, 55841), (12, 55898), (15, 55973), (20, 56036), (21, 56045), (22, 56066),

Gene: ShamWow_95 Start: 57526, Stop: 57978, Start Num: 5

Candidate Starts for ShamWow_95:

(3, 57499), (Start: 5 @57526 has 128 MA's), (10, 57565), (14, 57679), (15, 57724), (16, 57736), (18, 57754), (20, 57787), (21, 57796), (24, 57847),

Gene: ShereKhan_93 Start: 57638, Stop: 58090, Start Num: 5

Candidate Starts for ShereKhan_93:

(3, 57611), (Start: 5 @57638 has 128 MA's), (10, 57677), (14, 57791), (15, 57836), (16, 57848), (18, 57866), (20, 57899), (21, 57908), (24, 57959),

Gene: ShereKhan_94 Start: 58094, Stop: 58537, Start Num: 6

Candidate Starts for ShereKhan_94:

(Start: 6 @58094 has 66 MA's), (7, 58106), (10, 58133), (12, 58190), (15, 58265), (20, 58328), (21, 58337), (22, 58358),

Gene: Simpliphy_95 Start: 57102, Stop: 57545, Start Num: 6

Candidate Starts for Simpliphy_95:

(Start: 6 @57102 has 66 MA's), (7, 57114), (10, 57141), (12, 57198), (15, 57273), (20, 57336), (21, 57345), (22, 57366),

Gene: Simpliphy_94 Start: 56646, Stop: 57098, Start Num: 5

Candidate Starts for Simpliphy_94:

(3, 56619), (Start: 5 @56646 has 128 MA's), (10, 56685), (14, 56799), (15, 56844), (16, 56856), (18, 56874), (20, 56907), (21, 56916), (24, 56967),

Gene: SirDuracell_95 Start: 56019, Stop: 56471, Start Num: 5

Candidate Starts for SirDuracell_95:

(3, 55992), (Start: 5 @56019 has 128 MA's), (10, 56058), (14, 56172), (15, 56217), (16, 56229), (18, 56247), (20, 56280), (21, 56289), (24, 56340),

Gene: SirDuracell_96 Start: 56475, Stop: 56921, Start Num: 6

Candidate Starts for SirDuracell_96:

(Start: 6 @56475 has 66 MA's), (7, 56487), (10, 56514), (12, 56571), (15, 56646), (20, 56709), (21, 56718),

Gene: SophKB_92 Start: 56324, Stop: 56776, Start Num: 5

Candidate Starts for SophKB_92:

(3, 56297), (Start: 5 @56324 has 128 MA's), (10, 56363), (14, 56477), (15, 56522), (16, 56534), (18, 56552), (20, 56585), (21, 56594), (24, 56645),

Gene: Sotrice96_97 Start: 57368, Stop: 57811, Start Num: 6

Candidate Starts for Sotrice96_97:

(Start: 6 @57368 has 66 MA's), (10, 57407), (12, 57464), (15, 57539), (20, 57602), (21, 57611), (22, 57632),

Gene: Sotrice96_96 Start: 56912, Stop: 57364, Start Num: 5

Candidate Starts for Sotrice96_96:

(3, 56885), (Start: 5 @56912 has 128 MA's), (10, 56951), (14, 57065), (15, 57110), (16, 57122), (18, 57140), (20, 57173), (21, 57182), (22, 57203), (24, 57233),

Gene: Stank_98 Start: 57761, Stop: 58204, Start Num: 6

Candidate Starts for Stank_98:

(Start: 6 @57761 has 66 MA's), (7, 57773), (10, 57800), (12, 57857), (15, 57932), (20, 57995), (21, 58004), (22, 58025),

Gene: Stank_97 Start: 57305, Stop: 57757, Start Num: 5

Candidate Starts for Stank_97:

(3, 57278), (Start: 5 @57305 has 128 MA's), (10, 57344), (14, 57458), (15, 57503), (16, 57515), (18, 57533), (20, 57566), (21, 57575), (24, 57626),

Gene: Stark_97 Start: 57396, Stop: 57866, Start Num: 5

Candidate Starts for Stark_97:

(3, 57369), (Start: 5 @57396 has 128 MA's), (10, 57435), (14, 57549), (15, 57594), (16, 57606), (18, 57624), (20, 57657), (21, 57666), (24, 57717),

Gene: StellaBean_93 Start: 56850, Stop: 57302, Start Num: 5

Candidate Starts for StellaBean_93:

(3, 56823), (Start: 5 @56850 has 128 MA's), (10, 56889), (14, 57003), (15, 57048), (16, 57060), (18, 57078), (20, 57111), (21, 57120), (24, 57171),

Gene: StolenFromERC_98 Start: 57230, Stop: 57682, Start Num: 5

Candidate Starts for StolenFromERC_98:

(3, 57203), (Start: 5 @57230 has 128 MA's), (10, 57269), (14, 57383), (15, 57428), (16, 57440), (18, 57458), (20, 57491), (21, 57500), (24, 57551),

Gene: StolenFromERC_99 Start: 57686, Stop: 58129, Start Num: 6

Candidate Starts for StolenFromERC_99:

(Start: 6 @57686 has 66 MA's), (7, 57698), (10, 57725), (12, 57782), (15, 57857), (20, 57920), (21, 57929), (22, 57950),

Gene: StormChicken_97 Start: 58010, Stop: 58462, Start Num: 5

Candidate Starts for StormChicken_97:

(3, 57983), (Start: 5 @58010 has 128 MA's), (10, 58049), (14, 58163), (15, 58208), (16, 58220), (18, 58238), (20, 58271), (21, 58280), (24, 58331),

Gene: StormChicken_98 Start: 58466, Stop: 58909, Start Num: 6

Candidate Starts for StormChicken_98:

(Start: 6 @58466 has 66 MA's), (7, 58478), (10, 58505), (12, 58562), (15, 58637), (20, 58700), (21, 58709),

Gene: TBrady12_98 Start: 57066, Stop: 57518, Start Num: 5

Candidate Starts for TBrady12_98:

(3, 57039), (Start: 5 @57066 has 128 MA's), (10, 57105), (14, 57219), (15, 57264), (16, 57276), (18, 57294), (20, 57327), (21, 57336), (24, 57387),

Gene: Tarkin_94 Start: 57314, Stop: 57766, Start Num: 5

Candidate Starts for Tarkin_94:

(3, 57287), (Start: 5 @57314 has 128 MA's), (10, 57353), (14, 57467), (15, 57512), (16, 57524), (18, 57542), (20, 57575), (21, 57584), (24, 57635),

Gene: TeamEdward_95 Start: 57216, Stop: 57668, Start Num: 5

Candidate Starts for TeamEdward_95:

(1, 56973), (3, 57189), (Start: 5 @57216 has 128 MA's), (10, 57255), (14, 57369), (15, 57414), (16, 57426), (18, 57444), (20, 57477), (21, 57486), (24, 57537),

Gene: TeamEdward_96 Start: 57672, Stop: 58115, Start Num: 6

Candidate Starts for TeamEdward_96:

(Start: 6 @57672 has 66 MA's), (7, 57684), (10, 57711), (12, 57768), (15, 57843), (20, 57906), (21, 57915),

Gene: TeardropMSU_91 Start: 56314, Stop: 56766, Start Num: 5

Candidate Starts for TeardropMSU_91:

(3, 56287), (Start: 5 @56314 has 128 MA's), (10, 56353), (14, 56467), (15, 56512), (16, 56524), (18, 56542), (20, 56575), (21, 56584), (24, 56635),

Gene: Teaspoon_96 Start: 57166, Stop: 57618, Start Num: 5

Candidate Starts for Teaspoon_96:

(3, 57139), (Start: 5 @57166 has 128 MA's), (10, 57205), (14, 57319), (15, 57364), (16, 57376), (18, 57394), (20, 57427), (21, 57436), (22, 57457), (24, 57487),

Gene: Terminus_99 Start: 58557, Stop: 59000, Start Num: 6

Candidate Starts for Terminus_99:

(Start: 6 @58557 has 66 MA's), (7, 58569), (10, 58596), (12, 58653), (15, 58728), (20, 58791), (21, 58800), (22, 58821),

Gene: Terminus_98 Start: 58101, Stop: 58553, Start Num: 5

Candidate Starts for Terminus_98:

(3, 58074), (Start: 5 @58101 has 128 MA's), (10, 58140), (14, 58254), (15, 58299), (16, 58311), (18, 58329), (20, 58362), (21, 58371), (24, 58422),

Gene: Thimble_97 Start: 56816, Stop: 57268, Start Num: 5

Candidate Starts for Thimble_97:

(3, 56789), (Start: 5 @56816 has 128 MA's), (10, 56855), (14, 56969), (15, 57014), (16, 57026), (18, 57044), (20, 57077), (21, 57086), (24, 57137),

Gene: Thresher_98 Start: 58176, Stop: 58646, Start Num: 5

Candidate Starts for Thresher_98:

(3, 58149), (Start: 5 @58176 has 128 MA's), (10, 58215), (14, 58329), (15, 58374), (16, 58386), (18, 58404), (20, 58437), (21, 58446), (24, 58497),

Gene: Tomaszewski_91 Start: 56933, Stop: 57376, Start Num: 6

Candidate Starts for Tomaszewski_91:

(Start: 6 @56933 has 66 MA's), (7, 56945), (10, 56972), (12, 57029), (15, 57104), (20, 57167), (21, 57176), (22, 57197),

Gene: Tomaszewski_90 Start: 56477, Stop: 56929, Start Num: 5

Candidate Starts for Tomaszewski_90:

(3, 56450), (Start: 5 @56477 has 128 MA's), (10, 56516), (14, 56630), (15, 56675), (16, 56687), (18, 56705), (20, 56738), (21, 56747), (24, 56798),

Gene: Toto_93 Start: 57526, Stop: 57978, Start Num: 5

Candidate Starts for Toto_93:

(3, 57499), (Start: 5 @57526 has 128 MA's), (10, 57565), (14, 57679), (15, 57724), (16, 57736), (18, 57754), (20, 57787), (21, 57796), (24, 57847),

Gene: Traaww1_91 Start: 56334, Stop: 56786, Start Num: 5

Candidate Starts for Traaww1_91:

(3, 56307), (Start: 5 @56334 has 128 MA's), (10, 56373), (14, 56487), (15, 56532), (16, 56544), (18, 56562), (20, 56595), (21, 56604), (22, 56625), (24, 56655),

Gene: Traaww1_92 Start: 56790, Stop: 57233, Start Num: 6

Candidate Starts for Traaww1_92:

(Start: 6 @56790 has 66 MA's), (10, 56829), (12, 56886), (15, 56961), (20, 57024), (21, 57033), (22, 57054),

Gene: Tuco_97 Start: 58529, Stop: 58972, Start Num: 6

Candidate Starts for Tuco_97:

(Start: 6 @58529 has 66 MA's), (10, 58568), (12, 58625), (15, 58700), (20, 58763), (21, 58772), (22, 58793),

Gene: Tuco_96 Start: 58073, Stop: 58525, Start Num: 5

Candidate Starts for Tuco_96:

(3, 58046), (Start: 5 @58073 has 128 MA's), (10, 58112), (14, 58226), (15, 58271), (16, 58283), (18, 58301), (20, 58334), (21, 58343), (22, 58364), (24, 58394),

Gene: Ukulele_90 Start: 56459, Stop: 56911, Start Num: 5

Candidate Starts for Ukulele_90:

(3, 56432), (Start: 5 @56459 has 128 MA's), (10, 56498), (14, 56612), (15, 56657), (16, 56669), (18, 56687), (20, 56720), (21, 56729), (24, 56780),

Gene: Ukulele_91 Start: 56915, Stop: 57358, Start Num: 6

Candidate Starts for Ukulele_91:

(Start: 6 @56915 has 66 MA's), (7, 56927), (10, 56954), (12, 57011), (15, 57086), (20, 57149), (21, 57158), (22, 57179),

Gene: Wiggin_97 Start: 56735, Stop: 57187, Start Num: 5

Candidate Starts for Wiggin_97:

(3, 56708), (Start: 5 @56735 has 128 MA's), (10, 56774), (14, 56888), (15, 56933), (16, 56945), (18, 56963), (20, 56996), (21, 57005), (22, 57026), (24, 57056),

Gene: Wiggin_98 Start: 57191, Stop: 57634, Start Num: 6

Candidate Starts for Wiggin_98:

(Start: 6 @57191 has 66 MA's), (10, 57230), (12, 57287), (15, 57362), (20, 57425), (21, 57434), (22, 57455),

Gene: Wildcat_144 Start: 68090, Stop: 67533, Start Num: 2

Candidate Starts for Wildcat_144:

(Start: 2 @68090 has 5 MA's), (4, 68024), (8, 68003), (9, 67997), (11, 67934), (13, 67880), (17, 67796), (19, 67751), (23, 67700), (24, 67679), (25, 67634), (26, 67598), (27, 67568),

Gene: Willez_91 Start: 55802, Stop: 56245, Start Num: 6

Candidate Starts for Willez_91:

(Start: 6 @55802 has 66 MA's), (7, 55814), (10, 55841), (12, 55898), (15, 55973), (20, 56036), (21, 56045), (22, 56066),

Gene: Willez_90 Start: 55346, Stop: 55798, Start Num: 5

Candidate Starts for Willez_90:

(3, 55319), (Start: 5 @55346 has 128 MA's), (10, 55385), (14, 55499), (15, 55544), (16, 55556), (18, 55574), (20, 55607), (21, 55616), (24, 55667),

Gene: Xandras_94 Start: 56558, Stop: 57010, Start Num: 5

Candidate Starts for Xandras_94:

(3, 56531), (Start: 5 @56558 has 128 MA's), (10, 56597), (14, 56711), (15, 56756), (16, 56768), (18, 56786), (20, 56819), (21, 56828), (24, 56879),

Gene: Xandras_95 Start: 57014, Stop: 57457, Start Num: 6

Candidate Starts for Xandras_95:

(Start: 6 @57014 has 66 MA's), (7, 57026), (10, 57053), (12, 57110), (15, 57185), (20, 57248), (21, 57257), (22, 57278),

Gene: YassJohnny_92 Start: 56199, Stop: 56651, Start Num: 5

Candidate Starts for YassJohnny_92:

(3, 56172), (Start: 5 @56199 has 128 MA's), (10, 56238), (14, 56352), (15, 56397), (16, 56409), (18, 56427), (20, 56460), (21, 56469), (24, 56520),

Gene: Youngblood_98 Start: 58028, Stop: 58480, Start Num: 5

Candidate Starts for Youngblood_98:

(3, 58001), (Start: 5 @58028 has 128 MA's), (10, 58067), (14, 58181), (15, 58226), (16, 58238), (18, 58256), (20, 58289), (21, 58298), (24, 58349),

Gene: Youngblood_99 Start: 58484, Stop: 58927, Start Num: 6

Candidate Starts for Youngblood_99:

(Start: 6 @58484 has 66 MA's), (7, 58496), (10, 58523), (12, 58580), (15, 58655), (20, 58718), (21, 58727), (22, 58748),

Gene: xkcd_98 Start: 58212, Stop: 58664, Start Num: 5

Candidate Starts for xkcd_98:

(3, 58185), (Start: 5 @58212 has 128 MA's), (10, 58251), (14, 58365), (15, 58410), (16, 58422), (18, 58440), (20, 58473), (21, 58482), (24, 58533),

Gene: xkcd_99 Start: 58668, Stop: 59111, Start Num: 6

Candidate Starts for xkcd_99:

(Start: 6 @58668 has 66 MA's), (7, 58680), (10, 58707), (12, 58764), (20, 58902), (21, 58911), (22, 58932),