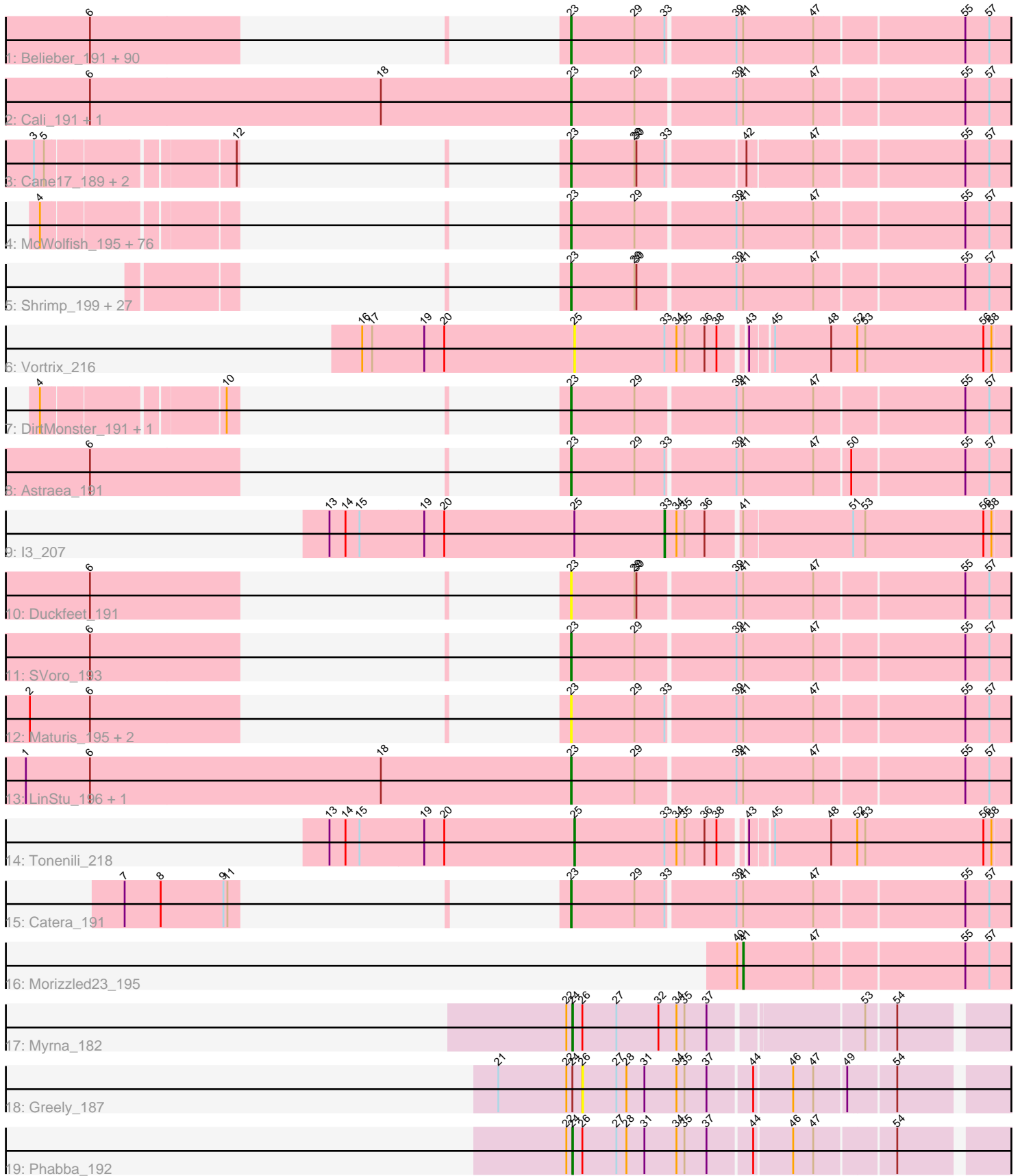


Pham 292518



Note: Tracks are now grouped by subcluster and scaled. Switching in subcluster is indicated by changes in track color. Track scale is now set by default to display the region 30 bp upstream of start 1 to 30 bp downstream of the last possible start. If this default region is judged to be packed too tightly with annotated starts, the track will be further scaled to only show that region of the ORF with annotated starts. This action will be indicated by adding "Zoomed" to the title. For starts, yellow indicates the location of called starts comprised solely of Glimmer/GeneMark auto-annotations, green indicates the location of called starts with at least 1 manual gene annotation.

Pham 292518 Report

This analysis was run 04/18/26 on database version 643.

Pham number 292518 has 219 members, 38 are drafts.

Phages represented in each track:

- Track 1 : Belieber_191, Derek_194, LifeSavor_196, Pio_205, Adlitam_196, LolaVinca_195, Spec_192, JulietS_188, Teardrop_194, Essence_194, Labradorite_195, RoMag_192, JPickles_193, Rahel_198, Guwapp_192, NuevoMundo_200, Burrough_199, PharkleMinkus_199, Darko_196, Napoleon13_195, Audrick_200, Littleton_200, ChickenPhender_194, Breeniome_196, Gabriel_200, Domi_191, Basquiat_195, LookingGlass_196, Sauce_193, HyRo_185, SmallFry_197, FrayBell_200, McGee_197, InterFolia_200, Turret_191, BadAgartude_191, EasyJones_201, Janiyra_201, ErnieJ_190, Specks_201, Phusco_196, EmmaElysia_200, IkeLoa_189, Substance289_194, Kamryn_196, ChaylaJr_195, Salacia_197, Quasimodo_200, EmToTheThree_198, Wally_196, BananaFence_194, Bxz1_187, Chargie21_195, Tyke_195, Stubby_182, Bangla1971_197, Dietrick_187, Trinitium_194, LordLeafolot_198, Grungle_182, Rizal_190, BackyardAgain_194, YoungMoneyMata_196, Cactojaque_193, Matsumoto_196, JustHall_192, Spud_192, Alice_184, Rabinovish_191, StephanieG_194, Flabslab_193, Fludd_198, ShiaLabeouf_194, Tainan_198, CindyLou_198, Jemmno_196, Pier_198, Jaygup_193, Fongie_198, Drazdys_195, Shnickers_195, DTDevon_199, Tortoise16_195, Ablatia_197, BobaPhatt_190, Kboogie_201, Pupusa_201, Shaqnato_189, Jedediah_197, Ghost_197, Bowman_195
- Track 2 : Cali_191, QBert_189
- Track 3 : Cane17_189, Colt_189, Blubba_187
- Track 4 : McWolfish_195, Nidhogg_199, Roots515_200, SilverDipper_201, OrediggerDelux_194, Daffodil_202, Gizmo_203, Babyland_200, Willis_198, Amataga_198, Ading_198, Khaleesi_197, ZygoTaiga_194, Phlegm_201, Erdmann_199, Zeenon_200, Naval22_203, MikeLiesIn_199, Patter_198, Capablanca_202, Ngannou_194, Naija_198, Bread_193, Delylah_199, Bipolarisk_196, Cleatunium_191, Jezreel_195, Melpomini_192, Delilah_196, Asterius_199, Lethe_198, Issimir_191, Ava3_196, Megamind_195, Pinkcreek_182, StubbySaigey_202, InigoMontoya_200, Izajani_196, Yucca_198, Mikro_193, DeejaClivia_186, Zalkecks_197, Maby2021_197, Moby_194, Lee7_198, Pivoine_198, DrPhinkDaddy_195, Fixie_197, Pleione_202, FudgeTart_193, Dandelion_205, PurduePete_198, TinyTim_196, Mangeria_198, Chomp_197, ScottMcG_191, NoodleTree_204, Rocha_195, Gamgam_198, ValleyTerrace_198, FoxtrotP1_196, Moiqah_193, Dessert_195, Atlantean_197, GlutenPhree_198, NedWong_197, Ewok_197, Momo_198, Shelob_199, Latch_197, Jessibeth14_198, Blackbrain_195, Bonray_200, YemiJoy2021_198, ParkTD_196, SrishMeg2525_195, Loanshark_195

- Track 5 : Shrimp_199, Bigswole_202, BigCity_206, Grasshills_205, Bezza_186, Yassified_194, MoMoMixon_195, Concombre_202, Halldule_190, BeanWater_189, CharlieB_191, Primadonna_192, ArcherS7_197, Norm_197, Demodog_203, Blackdragon_192, LRRHood_190, Koguma_196, EggyFarm_206, Sprinklers_195, Iota_192, Caravan_188, Phox_198, Lukilu_188, JigglyPuff_204, ET08_185, Nappy_198, Ronan_193
- Track 6 : Vortex_216
- Track 7 : DirtMonster_191, JayJay_200
- Track 8 : Astraea_191
- Track 9 : I3_207
- Track 10 : Duckfeet_191
- Track 11 : SVoro_193
- Track 12 : Maturis_195, Montpel_196, Lunareta_196
- Track 13 : LinStu_196, Sebata_199
- Track 14 : Tonenili_218
- Track 15 : Catera_191
- Track 16 : Morizzled23_195
- Track 17 : Myrna_182
- Track 18 : Greely_187
- Track 19 : Phabba_192

Summary of Final Annotations (See graph section above for start numbers):

The start number called the most often in the published annotations is 23, it was called in 176 of the 181 non-draft genes in the pham.

Genes that call this "Most Annotated" start:

- Ablatia_197, Ading_198, Adlitam_196, Alice_184, Amataga_198, ArcherS7_197, Asterius_199, Astraea_191, Atlantean_197, Audrick_200, Ava3_196, Babyland_200, BackyardAgain_194, BadAgartude_191, BananaFence_194, Bangla1971_197, Basquiat_195, BeanWater_189, Belieber_191, Bezza_186, BigCity_206, Bigswole_202, Bipolarisk_196, Blackbrain_195, Blackdragon_192, Blubba_187, BobaPhatt_190, Bonray_200, Bowman_195, Bread_193, Breeniome_196, Burrough_199, Bxz1_187, Cactojaque_193, Cali_191, Cane17_189, Capablanca_202, Caravan_188, Catera_191, Chargie21_195, CharlieB_191, ChaylaJr_195, ChickenPhender_194, Chomp_197, CindyLou_198, Cleatunium_191, Colt_189, Concombre_202, DTDevon_199, Daffodil_202, Dandelion_205, Darko_196, DeejaClivia_186, Delilah_196, Delylah_199, Demodog_203, Derek_194, Dessert_195, Dietrick_187, DirtMonster_191, Domi_191, DrPhinkDaddy_195, Drazdys_195, Duckfeet_191, ET08_185, EasyJones_201, EggyFarm_206, EmToTheThree_198, EmmaElysia_200, Erdmann_199, ErnieJ_190, Essence_194, Ewok_197, Fixie_197, Flabslab_193, Fludd_198, Fongie_198, FoxtrotP1_196, FrayBell_200, FudgeTart_193, Gabriel_200, Gamgam_198, Ghost_197, Gizmo_203, GlutenPhree_198, Grasshills_205, Grungle_182, Guwapp_192, Halldule_190, HyRo_185, IkeLoa_189, InigoMontoya_200, InterFolia_200, Iota_192, Issimir_191, Izajani_196, JPickles_193, Janiyra_201, JayJay_200, Jaygup_193, Jedediah_197, Jemmno_196, Jessibeth14_198, Jezreel_195, JigglyPuff_204, JulietS_188, JustHall_192, Kamryn_196, Kboogie_201, Khaleesi_197, Koguma_196, LRRHood_190, Labradorite_195, Latch_197, Lee7_198, Lethe_198, LifeSavor_196, LinStu_196, Littleton_200, Loanshark_195, LolaVinca_195, LookingGlass_196,

LordLeafolot_198, Lukilu_188, Lunareta_196, Maby2021_197, Mangeria_198, Matsumoto_196, Maturis_195, McGee_197, McWolfish_195, Megamind_195, Melpomini_192, MikeLiesIn_199, Mikro_193, MoMoMixon_195, Moby_194, Moiqah_193, Momo_198, Montpel_196, Naija_198, Napoleon13_195, Nappy_198, Naval22_203, NedWong_197, Ngannou_194, Nidhogg_199, NoodleTree_204, Norm_197, NuevoMundo_200, OrediggerDelux_194, ParkTD_196, Patter_198, PharkleMinkus_199, Phlegm_201, Phox_198, Phusco_196, Pier_198, Pinkcreek_182, Pio_205, Pivoine_198, Pleione_202, Primadonna_192, Pupusa_201, PurduePete_198, QBert_189, Quasimodo_200, Rabinovish_191, Rahel_198, Rizal_190, RoMag_192, Rocha_195, Ronan_193, Roots515_200, SVoro_193, Salacia_197, Sauce_193, ScottMcG_191, Sebata_199, Shaqnato_189, Shelob_199, ShiaLabeouf_194, Shnickers_195, Shrimp_199, SilverDipper_201, SmallFry_197, Spec_192, Specks_201, Sprinklers_195, Spud_192, SrishMeg2525_195, StephanieG_194, StubbySaigey_202, Stubby_182, Substance289_194, Tainan_198, Teardrop_194, TinyTim_196, Tortoise16_195, Trinitium_194, Turret_191, Tyke_195, ValleyTerrace_198, Wally_196, Willis_198, Yassified_194, YemiJoy2021_198, YoungMoneyMata_196, Yucca_198, Zalkecks_197, Zeenon_200, ZygoTaiga_194,

Genes that have the "Most Annotated" start but do not call it:

-

Genes that do not have the "Most Annotated" start:

- Greely_187, I3_207, Morizzled23_195, Myrna_182, Phabba_192, Tonenili_218, Vortrix_216,

Summary by start number:

Start 23:

- Found in 212 of 219 (96.8%) of genes in pham
- Manual Annotations of this start: 176 of 181
- Called 100.0% of time when present
- Phage (with cluster) where this start called: Ablatia_197 (C1), Ading_198 (C1), Adlitam_196 (C1), Alice_184 (C1), Amataga_198 (C1), ArcherS7_197 (C1), Asterius_199 (C1), Astraea_191 (C1), Atlantean_197 (C1), Audrick_200 (C1), Ava3_196 (C1), Babyland_200 (C1), BackyardAgain_194 (C1), BadAgartude_191 (C1), BananaFence_194 (C1), Bangla1971_197 (C1), Basquiat_195 (C1), BeanWater_189 (C1), Belieber_191 (C1), Bezza_186 (C1), BigCity_206 (C1), Bigswole_202 (C1), Bipolarisk_196 (C1), Blackbrain_195 (C1), Blackdragon_192 (C1), Blubba_187 (C1), BobaPhatt_190 (C1), Bonray_200 (C1), Bowman_195 (C1), Bread_193 (C1), Breeniome_196 (C1), Burrough_199 (C1), Bxz1_187 (C1), Cactojaque_193 (C1), Cali_191 (C1), Cane17_189 (C1), Capablanca_202 (C1), Caravan_188 (C1), Catera_191 (C1), Chargie21_195 (C1), CharlieB_191 (C1), ChaylaJr_195 (C1), ChickenPhender_194 (C1), Chomp_197 (C1), CindyLou_198 (C1), Cleatunium_191 (C1), Colt_189 (C1), Concombre_202 (C1), DTDevon_199 (C1), Daffodil_202 (C1), Dandelion_205 (C1), Darko_196 (C1), DeejaClivia_186 (C1), Delilah_196 (C1), Delylah_199 (C1), Demodog_203 (C1), Derek_194 (C1), Dessert_195 (C1), Dietrick_187 (C1), DirtMonster_191 (C1), Domi_191 (C1), DrPhinkDaddy_195 (C1), Drazdys_195 (C1), Duckfeet_191 (C1), ET08_185 (C1), EasyJones_201 (C1), EggyFarm_206 (C1), EmToTheThree_198 (C1), EmmaElysia_200 (C1), Erdmann_199 (C1), ErnieJ_190 (C1), Essence_194 (C1), Ewok_197 (C1), Fixie_197 (C1), Flabslab_193 (C1), Fludd_198 (C1), Fongie_198 (C1), FoxtrotP1_196 (C1), FrayBell_200 (C1), FudgeTart_193 (C1), Gabriel_200 (C1), Gamgam_198 (C1), Ghost_197 (C1), Gizmo_203 (C1), GlutenPhree_198 (C1),

Grasshills_205 (C1), Grungle_182 (C1), Guwapp_192 (C1), Halldule_190 (C1), HyRo_185 (C1), IkeLoa_189 (C1), InigoMontoya_200 (C1), InterFolia_200 (C1), Iota_192 (C1), Issimir_191 (C1), Izajani_196 (C1), JPickles_193 (C1), Janiyra_201 (C1), JayJay_200 (C1), Jaygup_193 (C1), Jedediah_197 (C1), Jemmno_196 (C1), Jessibeth14_198 (C1), Jezreel_195 (C1), JigglyPuff_204 (C1), JulietS_188 (C1), JustHall_192 (C1), Kamryn_196 (C1), Kboogie_201 (C1), Khaleesi_197 (C1), Koguma_196 (C1), LRRHood_190 (C1), Labradorite_195 (C1), Latch_197 (C1), Lee7_198 (C1), Lethe_198 (C1), LifeSavor_196 (C1), LinStu_196 (C1), Littleton_200 (C1), Loanshark_195 (C1), LolaVinca_195 (C1), LookingGlass_196 (C1), LordLeafolot_198 (C1), Lukilu_188 (C1), Lunareta_196 (C1), Maby2021_197 (C1), Mangeria_198 (C1), Matsumoto_196 (C1), Maturis_195 (C1), McGee_197 (C1), McWolfish_195 (C1), Megamind_195 (C1), Melpomini_192 (C1), MikeLiesIn_199 (C1), Mikro_193 (C1), MoMoMixon_195 (C1), Moby_194 (C1), Moiqah_193 (C1), Momo_198 (C1), Montpel_196 (C1), Naija_198 (C1), Napoleon13_195 (C1), Nappy_198 (C1), Naval22_203 (C1), NedWong_197 (C1), Ngannou_194 (C1), Nidhogg_199 (C1), NoodleTree_204 (C1), Norm_197 (C1), NuevoMundo_200 (C1), OrediggerDelux_194 (C1), ParkTD_196 (C1), Patter_198 (C1), PharkleMinkus_199 (C1), Phlegm_201 (C1), Phox_198 (C1), Phusco_196 (C1), Pier_198 (C1), Pinkcreek_182 (C1), Pio_205 (C1), Pivoine_198 (C1), Pleione_202 (C1), Primadonna_192 (C1), Pupusa_201 (C1), PurduePete_198 (C1), QBert_189 (C1), Quasimodo_200 (C1), Rabinovish_191 (C1), Rahel_198 (C1), Rizal_190 (C1), RoMag_192 (C1), Rocha_195 (C1), Ronan_193 (C1), Roots515_200 (C1), SVoro_193 (C1), Salacia_197 (C1), Sauce_193 (C1), ScottMcG_191 (C1), Sebata_199 (C1), Shaqnato_189 (C1), Shelob_199 (C1), ShiaLabeouf_194 (C1), Shnickers_195 (C1), Shrimp_199 (C1), SilverDipper_201 (C1), SmallFry_197 (C1), Spec_192 (C1), Specks_201 (C1), Sprinklers_195 (C1), Spud_192 (C1), SrishMeg2525_195 (C1), StephanieG_194 (C1), StubbySaigey_202 (C1), Stubby_182 (C1), Substance289_194 (C1), Tainan_198 (C1), Teardrop_194 (C1), TinyTim_196 (C1), Tortoise16_195 (C1), Trinitium_194 (C1), Turret_191 (C1), Tyke_195 (C1), ValleyTerrace_198 (C1), Wally_196 (C1), Willis_198 (C1), Yassified_194 (C1), YemiJoy2021_198 (C1), YoungMoneyMata_196 (C1), Yucca_198 (C1), Zalkecks_197 (C1), Zeenon_200 (C1), ZygoTaiga_194 (C1),

Start 24:

- Found in 3 of 219 (1.4%) of genes in pham
- Manual Annotations of this start: 2 of 181
- Called 66.7% of time when present
- Phage (with cluster) where this start called: Myrna_182 (C2), Phabba_192 (C2),

Start 25:

- Found in 3 of 219 (1.4%) of genes in pham
- Manual Annotations of this start: 1 of 181
- Called 66.7% of time when present
- Phage (with cluster) where this start called: Tonenili_218 (C1), Vortrix_216 (C1),

Start 26:

- Found in 3 of 219 (1.4%) of genes in pham
- No Manual Annotations of this start.
- Called 33.3% of time when present
- Phage (with cluster) where this start called: Greely_187 (C2),

Start 33:

- Found in 102 of 219 (46.6%) of genes in pham

- Manual Annotations of this start: 1 of 181
- Called 1.0% of time when present
- Phage (with cluster) where this start called: I3_207 (C1),

Start 41:

- Found in 211 of 219 (96.3%) of genes in pham
- Manual Annotations of this start: 1 of 181
- Called 0.5% of time when present
- Phage (with cluster) where this start called: Morizzled23_195 (C1),

Summary by clusters:

There are 2 clusters represented in this pham: C2, C1,

Info for manual annotations of cluster C1:

- Start number 23 was manually annotated 176 times for cluster C1.
- Start number 25 was manually annotated 1 time for cluster C1.
- Start number 33 was manually annotated 1 time for cluster C1.
- Start number 41 was manually annotated 1 time for cluster C1.

Info for manual annotations of cluster C2:

- Start number 24 was manually annotated 2 times for cluster C2.

Gene Information:

Gene: Ablatia_197 Start: 105076, Stop: 105765, Start Num: 23

Candidate Starts for Ablatia_197:

(6, 104833), (Start: 23 @105076 has 176 MA's), (29, 105169), (Start: 33 @105214 has 1 MA's), (39, 105313), (Start: 41 @105322 has 1 MA's), (47, 105427), (55, 105640), (57, 105676),

Gene: Ading_198 Start: 105394, Stop: 106083, Start Num: 23

Candidate Starts for Ading_198:

(4, 105109), (Start: 23 @105394 has 176 MA's), (29, 105487), (39, 105631), (Start: 41 @105640 has 1 MA's), (47, 105745), (55, 105958), (57, 105994),

Gene: Adlitam_196 Start: 103998, Stop: 104687, Start Num: 23

Candidate Starts for Adlitam_196:

(6, 103755), (Start: 23 @103998 has 176 MA's), (29, 104091), (Start: 33 @104136 has 1 MA's), (39, 104235), (Start: 41 @104244 has 1 MA's), (47, 104349), (55, 104562), (57, 104598),

Gene: Alice_184 Start: 103966, Stop: 104655, Start Num: 23

Candidate Starts for Alice_184:

(6, 103723), (Start: 23 @103966 has 176 MA's), (29, 104059), (Start: 33 @104104 has 1 MA's), (39, 104203), (Start: 41 @104212 has 1 MA's), (47, 104317), (55, 104530), (57, 104566),

Gene: Amataga_198 Start: 103810, Stop: 104499, Start Num: 23

Candidate Starts for Amataga_198:

(4, 103525), (Start: 23 @103810 has 176 MA's), (29, 103903), (39, 104047), (Start: 41 @104056 has 1 MA's), (47, 104161), (55, 104374), (57, 104410),

Gene: ArcherS7_197 Start: 104852, Stop: 105541, Start Num: 23

Candidate Starts for ArcherS7_197:

(Start: 23 @104852 has 176 MA's), (29, 104945), (30, 104948), (39, 105089), (Start: 41 @105098 has 1 MA's), (47, 105203), (55, 105416), (57, 105452),

Gene: Asterius_199 Start: 104528, Stop: 105217, Start Num: 23

Candidate Starts for Asterius_199:

(4, 104243), (Start: 23 @104528 has 176 MA's), (29, 104621), (39, 104765), (Start: 41 @104774 has 1 MA's), (47, 104879), (55, 105092), (57, 105128),

Gene: Astraea_191 Start: 103416, Stop: 104105, Start Num: 23

Candidate Starts for Astraea_191:

(6, 103173), (Start: 23 @103416 has 176 MA's), (29, 103509), (Start: 33 @103554 has 1 MA's), (39, 103653), (Start: 41 @103662 has 1 MA's), (47, 103767), (50, 103815), (55, 103980), (57, 104016),

Gene: Atlantean_197 Start: 103810, Stop: 104499, Start Num: 23

Candidate Starts for Atlantean_197:

(4, 103525), (Start: 23 @103810 has 176 MA's), (29, 103903), (39, 104047), (Start: 41 @104056 has 1 MA's), (47, 104161), (55, 104374), (57, 104410),

Gene: Audrick_200 Start: 104009, Stop: 104698, Start Num: 23

Candidate Starts for Audrick_200:

(6, 103766), (Start: 23 @104009 has 176 MA's), (29, 104102), (Start: 33 @104147 has 1 MA's), (39, 104246), (Start: 41 @104255 has 1 MA's), (47, 104360), (55, 104573), (57, 104609),

Gene: Ava3_196 Start: 104553, Stop: 105242, Start Num: 23

Candidate Starts for Ava3_196:

(4, 104268), (Start: 23 @104553 has 176 MA's), (29, 104646), (39, 104790), (Start: 41 @104799 has 1 MA's), (47, 104904), (55, 105117), (57, 105153),

Gene: Babyland_200 Start: 104587, Stop: 105276, Start Num: 23

Candidate Starts for Babyland_200:

(4, 104302), (Start: 23 @104587 has 176 MA's), (29, 104680), (39, 104824), (Start: 41 @104833 has 1 MA's), (47, 104938), (55, 105151), (57, 105187),

Gene: BackyardAgain_194 Start: 102805, Stop: 103494, Start Num: 23

Candidate Starts for BackyardAgain_194:

(6, 102562), (Start: 23 @102805 has 176 MA's), (29, 102898), (Start: 33 @102943 has 1 MA's), (39, 103042), (Start: 41 @103051 has 1 MA's), (47, 103156), (55, 103369), (57, 103405),

Gene: BadAgartude_191 Start: 103909, Stop: 104598, Start Num: 23

Candidate Starts for BadAgartude_191:

(6, 103666), (Start: 23 @103909 has 176 MA's), (29, 104002), (Start: 33 @104047 has 1 MA's), (39, 104146), (Start: 41 @104155 has 1 MA's), (47, 104260), (55, 104473), (57, 104509),

Gene: BananaFence_194 Start: 104045, Stop: 104734, Start Num: 23

Candidate Starts for BananaFence_194:

(6, 103802), (Start: 23 @104045 has 176 MA's), (29, 104138), (Start: 33 @104183 has 1 MA's), (39, 104282), (Start: 41 @104291 has 1 MA's), (47, 104396), (55, 104609), (57, 104645),

Gene: Bangla1971_197 Start: 103816, Stop: 104505, Start Num: 23

Candidate Starts for Bangla1971_197:

(6, 103573), (Start: 23 @103816 has 176 MA's), (29, 103909), (Start: 33 @103954 has 1 MA's), (39, 104053), (Start: 41 @104062 has 1 MA's), (47, 104167), (55, 104380), (57, 104416),

Gene: Basquiat_195 Start: 103631, Stop: 104320, Start Num: 23

Candidate Starts for Basquiat_195:

(6, 103388), (Start: 23 @103631 has 176 MA's), (29, 103724), (Start: 33 @103769 has 1 MA's), (39, 103868), (Start: 41 @103877 has 1 MA's), (47, 103982), (55, 104195), (57, 104231),

Gene: BeanWater_189 Start: 103848, Stop: 104537, Start Num: 23

Candidate Starts for BeanWater_189:

(Start: 23 @103848 has 176 MA's), (29, 103941), (30, 103944), (39, 104085), (Start: 41 @104094 has 1 MA's), (47, 104199), (55, 104412), (57, 104448),

Gene: Belieber_191 Start: 102945, Stop: 103634, Start Num: 23

Candidate Starts for Belieber_191:

(6, 102702), (Start: 23 @102945 has 176 MA's), (29, 103038), (Start: 33 @103083 has 1 MA's), (39, 103182), (Start: 41 @103191 has 1 MA's), (47, 103296), (55, 103509), (57, 103545),

Gene: Bezza_186 Start: 104360, Stop: 105049, Start Num: 23

Candidate Starts for Bezza_186:

(Start: 23 @104360 has 176 MA's), (29, 104453), (30, 104456), (39, 104597), (Start: 41 @104606 has 1 MA's), (47, 104711), (55, 104924), (57, 104960),

Gene: BigCity_206 Start: 107419, Stop: 108108, Start Num: 23

Candidate Starts for BigCity_206:

(Start: 23 @107419 has 176 MA's), (29, 107512), (30, 107515), (39, 107656), (Start: 41 @107665 has 1 MA's), (47, 107770), (55, 107983), (57, 108019),

Gene: Bigswole_202 Start: 107270, Stop: 107959, Start Num: 23

Candidate Starts for Bigswole_202:

(Start: 23 @107270 has 176 MA's), (29, 107363), (30, 107366), (39, 107507), (Start: 41 @107516 has 1 MA's), (47, 107621), (55, 107834), (57, 107870),

Gene: Bipolarisk_196 Start: 104822, Stop: 105511, Start Num: 23

Candidate Starts for Bipolarisk_196:

(4, 104537), (Start: 23 @104822 has 176 MA's), (29, 104915), (39, 105059), (Start: 41 @105068 has 1 MA's), (47, 105173), (55, 105386), (57, 105422),

Gene: Blackbrain_195 Start: 104716, Stop: 105405, Start Num: 23

Candidate Starts for Blackbrain_195:

(4, 104431), (Start: 23 @104716 has 176 MA's), (29, 104809), (39, 104953), (Start: 41 @104962 has 1 MA's), (47, 105067), (55, 105280), (57, 105316),

Gene: Blackdragon_192 Start: 104146, Stop: 104835, Start Num: 23

Candidate Starts for Blackdragon_192:

(Start: 23 @104146 has 176 MA's), (29, 104239), (30, 104242), (39, 104383), (Start: 41 @104392 has 1 MA's), (47, 104497), (55, 104710), (57, 104746),

Gene: Blubba_187 Start: 108026, Stop: 108703, Start Num: 23

Candidate Starts for Blubba_187:

(3, 107732), (5, 107747), (12, 108002), (Start: 23 @108026 has 176 MA's), (29, 108119), (30, 108122), (Start: 33 @108164 has 1 MA's), (42, 108272), (47, 108365), (55, 108578), (57, 108614),

Gene: BobaPhatt_190 Start: 102830, Stop: 103519, Start Num: 23

Candidate Starts for BobaPhatt_190:

(6, 102587), (Start: 23 @102830 has 176 MA's), (29, 102923), (Start: 33 @102968 has 1 MA's), (39, 103067), (Start: 41 @103076 has 1 MA's), (47, 103181), (55, 103394), (57, 103430),

Gene: Bonray_200 Start: 106224, Stop: 106913, Start Num: 23

Candidate Starts for Bonray_200:

(4, 105939), (Start: 23 @106224 has 176 MA's), (29, 106317), (39, 106461), (Start: 41 @106470 has 1 MA's), (47, 106575), (55, 106788), (57, 106824),

Gene: Bowman_195 Start: 105022, Stop: 105711, Start Num: 23

Candidate Starts for Bowman_195:

(6, 104779), (Start: 23 @105022 has 176 MA's), (29, 105115), (Start: 33 @105160 has 1 MA's), (39, 105259), (Start: 41 @105268 has 1 MA's), (47, 105373), (55, 105586), (57, 105622),

Gene: Bread_193 Start: 104222, Stop: 104911, Start Num: 23

Candidate Starts for Bread_193:

(4, 103937), (Start: 23 @104222 has 176 MA's), (29, 104315), (39, 104459), (Start: 41 @104468 has 1 MA's), (47, 104573), (55, 104786), (57, 104822),

Gene: Breeniome_196 Start: 103367, Stop: 104056, Start Num: 23

Candidate Starts for Breeniome_196:

(6, 103124), (Start: 23 @103367 has 176 MA's), (29, 103460), (Start: 33 @103505 has 1 MA's), (39, 103604), (Start: 41 @103613 has 1 MA's), (47, 103718), (55, 103931), (57, 103967),

Gene: Burrough_199 Start: 105683, Stop: 106372, Start Num: 23

Candidate Starts for Burrough_199:

(6, 105440), (Start: 23 @105683 has 176 MA's), (29, 105776), (Start: 33 @105821 has 1 MA's), (39, 105920), (Start: 41 @105929 has 1 MA's), (47, 106034), (55, 106247), (57, 106283),

Gene: Bxz1_187 Start: 106882, Stop: 107571, Start Num: 23

Candidate Starts for Bxz1_187:

(6, 106639), (Start: 23 @106882 has 176 MA's), (29, 106975), (Start: 33 @107020 has 1 MA's), (39, 107119), (Start: 41 @107128 has 1 MA's), (47, 107233), (55, 107446), (57, 107482),

Gene: Cactojaque_193 Start: 103651, Stop: 104340, Start Num: 23

Candidate Starts for Cactojaque_193:

(6, 103408), (Start: 23 @103651 has 176 MA's), (29, 103744), (Start: 33 @103789 has 1 MA's), (39, 103888), (Start: 41 @103897 has 1 MA's), (47, 104002), (55, 104215), (57, 104251),

Gene: Cali_191 Start: 105598, Stop: 106287, Start Num: 23

Candidate Starts for Cali_191:

(6, 104878), (18, 105313), (Start: 23 @105598 has 176 MA's), (29, 105691), (39, 105835), (Start: 41 @105844 has 1 MA's), (47, 105949), (55, 106162), (57, 106198),

Gene: Cane17_189 Start: 108435, Stop: 109112, Start Num: 23

Candidate Starts for Cane17_189:

(3, 108141), (5, 108156), (12, 108411), (Start: 23 @108435 has 176 MA's), (29, 108528), (30, 108531), (Start: 33 @108573 has 1 MA's), (42, 108681), (47, 108774), (55, 108987), (57, 109023),

Gene: Capablanca_202 Start: 106819, Stop: 107508, Start Num: 23

Candidate Starts for Capablanca_202:

(4, 106534), (Start: 23 @106819 has 176 MA's), (29, 106912), (39, 107056), (Start: 41 @107065 has 1 MA's), (47, 107170), (55, 107383), (57, 107419),

Gene: Caravan_188 Start: 104630, Stop: 105319, Start Num: 23

Candidate Starts for Caravan_188:

(Start: 23 @104630 has 176 MA's), (29, 104723), (30, 104726), (39, 104867), (Start: 41 @104876 has 1 MA's), (47, 104981), (55, 105194), (57, 105230),

Gene: Catera_191 Start: 103332, Stop: 104021, Start Num: 23

Candidate Starts for Catera_191:

(7, 103140), (8, 103194), (9, 103287), (11, 103293), (Start: 23 @103332 has 176 MA's), (29, 103425), (Start: 33 @103470 has 1 MA's), (39, 103569), (Start: 41 @103578 has 1 MA's), (47, 103683), (55, 103896), (57, 103932),

Gene: Chargie21_195 Start: 103631, Stop: 104320, Start Num: 23

Candidate Starts for Chargie21_195:

(6, 103388), (Start: 23 @103631 has 176 MA's), (29, 103724), (Start: 33 @103769 has 1 MA's), (39, 103868), (Start: 41 @103877 has 1 MA's), (47, 103982), (55, 104195), (57, 104231),

Gene: CharlieB_191 Start: 104050, Stop: 104739, Start Num: 23

Candidate Starts for CharlieB_191:

(Start: 23 @104050 has 176 MA's), (29, 104143), (30, 104146), (39, 104287), (Start: 41 @104296 has 1 MA's), (47, 104401), (55, 104614), (57, 104650),

Gene: ChaylaJr_195 Start: 104059, Stop: 104748, Start Num: 23

Candidate Starts for ChaylaJr_195:

(6, 103816), (Start: 23 @104059 has 176 MA's), (29, 104152), (Start: 33 @104197 has 1 MA's), (39, 104296), (Start: 41 @104305 has 1 MA's), (47, 104410), (55, 104623), (57, 104659),

Gene: ChickenPhender_194 Start: 103778, Stop: 104467, Start Num: 23

Candidate Starts for ChickenPhender_194:

(6, 103535), (Start: 23 @103778 has 176 MA's), (29, 103871), (Start: 33 @103916 has 1 MA's), (39, 104015), (Start: 41 @104024 has 1 MA's), (47, 104129), (55, 104342), (57, 104378),

Gene: Chomp_197 Start: 105099, Stop: 105788, Start Num: 23

Candidate Starts for Chomp_197:

(4, 104814), (Start: 23 @105099 has 176 MA's), (29, 105192), (39, 105336), (Start: 41 @105345 has 1 MA's), (47, 105450), (55, 105663), (57, 105699),

Gene: CindyLou_198 Start: 105359, Stop: 106048, Start Num: 23

Candidate Starts for CindyLou_198:

(6, 105116), (Start: 23 @105359 has 176 MA's), (29, 105452), (Start: 33 @105497 has 1 MA's), (39, 105596), (Start: 41 @105605 has 1 MA's), (47, 105710), (55, 105923), (57, 105959),

Gene: Cleatunium_191 Start: 104051, Stop: 104740, Start Num: 23

Candidate Starts for Cleatunium_191:

(4, 103766), (Start: 23 @104051 has 176 MA's), (29, 104144), (39, 104288), (Start: 41 @104297 has 1 MA's), (47, 104402), (55, 104615), (57, 104651),

Gene: Colt_189 Start: 107666, Stop: 108343, Start Num: 23

Candidate Starts for Colt_189:

(3, 107372), (5, 107387), (12, 107642), (Start: 23 @107666 has 176 MA's), (29, 107759), (30, 107762), (Start: 33 @107804 has 1 MA's), (42, 107912), (47, 108005), (55, 108218), (57, 108254),

Gene: Concombres_202 Start: 106962, Stop: 107651, Start Num: 23

Candidate Starts for Concombres_202:

(Start: 23 @106962 has 176 MA's), (29, 107055), (30, 107058), (39, 107199), (Start: 41 @107208 has 1 MA's), (47, 107313), (55, 107526), (57, 107562),

Gene: DTDevon_199 Start: 105848, Stop: 106537, Start Num: 23

Candidate Starts for DTDevon_199:

(6, 105605), (Start: 23 @105848 has 176 MA's), (29, 105941), (Start: 33 @105986 has 1 MA's), (39, 106085), (Start: 41 @106094 has 1 MA's), (47, 106199), (55, 106412), (57, 106448),

Gene: Daffodil_202 Start: 105122, Stop: 105811, Start Num: 23

Candidate Starts for Daffodil_202:

(4, 104837), (Start: 23 @105122 has 176 MA's), (29, 105215), (39, 105359), (Start: 41 @105368 has 1 MA's), (47, 105473), (55, 105686), (57, 105722),

Gene: Dandelion_205 Start: 108755, Stop: 109444, Start Num: 23

Candidate Starts for Dandelion_205:

(4, 108470), (Start: 23 @108755 has 176 MA's), (29, 108848), (39, 108992), (Start: 41 @109001 has 1 MA's), (47, 109106), (55, 109319), (57, 109355),

Gene: Darko_196 Start: 104049, Stop: 104738, Start Num: 23

Candidate Starts for Darko_196:

(6, 103806), (Start: 23 @104049 has 176 MA's), (29, 104142), (Start: 33 @104187 has 1 MA's), (39, 104286), (Start: 41 @104295 has 1 MA's), (47, 104400), (55, 104613), (57, 104649),

Gene: DeejaClivia_186 Start: 103491, Stop: 104180, Start Num: 23

Candidate Starts for DeejaClivia_186:

(4, 103206), (Start: 23 @103491 has 176 MA's), (29, 103584), (39, 103728), (Start: 41 @103737 has 1 MA's), (47, 103842), (55, 104055), (57, 104091),

Gene: Delilah_196 Start: 105240, Stop: 105929, Start Num: 23

Candidate Starts for Delilah_196:

(4, 104955), (Start: 23 @105240 has 176 MA's), (29, 105333), (39, 105477), (Start: 41 @105486 has 1 MA's), (47, 105591), (55, 105804), (57, 105840),

Gene: Delylah_199 Start: 105220, Stop: 105909, Start Num: 23

Candidate Starts for Delylah_199:

(4, 104935), (Start: 23 @105220 has 176 MA's), (29, 105313), (39, 105457), (Start: 41 @105466 has 1 MA's), (47, 105571), (55, 105784), (57, 105820),

Gene: Demodog_203 Start: 106972, Stop: 107661, Start Num: 23

Candidate Starts for Demodog_203:

(Start: 23 @106972 has 176 MA's), (29, 107065), (30, 107068), (39, 107209), (Start: 41 @107218 has 1 MA's), (47, 107323), (55, 107536), (57, 107572),

Gene: Derek_194 Start: 104376, Stop: 105065, Start Num: 23

Candidate Starts for Derek_194:

(6, 104133), (Start: 23 @104376 has 176 MA's), (29, 104469), (Start: 33 @104514 has 1 MA's), (39, 104613), (Start: 41 @104622 has 1 MA's), (47, 104727), (55, 104940), (57, 104976),

Gene: Dessert_195 Start: 103376, Stop: 104065, Start Num: 23

Candidate Starts for Dessert_195:

(4, 103091), (Start: 23 @103376 has 176 MA's), (29, 103469), (39, 103613), (Start: 41 @103622 has 1 MA's), (47, 103727), (55, 103940), (57, 103976),

Gene: Dietrick_187 Start: 103361, Stop: 104050, Start Num: 23

Candidate Starts for Dietrick_187:

(6, 103118), (Start: 23 @103361 has 176 MA's), (29, 103454), (Start: 33 @103499 has 1 MA's), (39, 103598), (Start: 41 @103607 has 1 MA's), (47, 103712), (55, 103925), (57, 103961),

Gene: DirtMonster_191 Start: 104601, Stop: 105290, Start Num: 23

Candidate Starts for DirtMonster_191:

(4, 104316), (10, 104562), (Start: 23 @104601 has 176 MA's), (29, 104694), (39, 104838), (Start: 41 @104847 has 1 MA's), (47, 104952), (55, 105165), (57, 105201),

Gene: Domi_191 Start: 104403, Stop: 105092, Start Num: 23

Candidate Starts for Domi_191:

(6, 104160), (Start: 23 @104403 has 176 MA's), (29, 104496), (Start: 33 @104541 has 1 MA's), (39, 104640), (Start: 41 @104649 has 1 MA's), (47, 104754), (55, 104967), (57, 105003),

Gene: DrPhinkDaddy_195 Start: 105900, Stop: 106589, Start Num: 23

Candidate Starts for DrPhinkDaddy_195:

(4, 105615), (Start: 23 @105900 has 176 MA's), (29, 105993), (39, 106137), (Start: 41 @106146 has 1 MA's), (47, 106251), (55, 106464), (57, 106500),

Gene: Drazdys_195 Start: 104493, Stop: 105182, Start Num: 23

Candidate Starts for Drazdys_195:

(6, 104250), (Start: 23 @104493 has 176 MA's), (29, 104586), (Start: 33 @104631 has 1 MA's), (39, 104730), (Start: 41 @104739 has 1 MA's), (47, 104844), (55, 105057), (57, 105093),

Gene: Duckfeet_191 Start: 104019, Stop: 104708, Start Num: 23

Candidate Starts for Duckfeet_191:

(6, 103776), (Start: 23 @104019 has 176 MA's), (29, 104112), (30, 104115), (39, 104256), (Start: 41 @104265 has 1 MA's), (47, 104370), (55, 104583), (57, 104619),

Gene: ET08_185 Start: 104084, Stop: 104773, Start Num: 23

Candidate Starts for ET08_185:

(Start: 23 @104084 has 176 MA's), (29, 104177), (30, 104180), (39, 104321), (Start: 41 @104330 has 1 MA's), (47, 104435), (55, 104648), (57, 104684),

Gene: EasyJones_201 Start: 104874, Stop: 105563, Start Num: 23

Candidate Starts for EasyJones_201:

(6, 104631), (Start: 23 @104874 has 176 MA's), (29, 104967), (Start: 33 @105012 has 1 MA's), (39, 105111), (Start: 41 @105120 has 1 MA's), (47, 105225), (55, 105438), (57, 105474),

Gene: EggyFarm_206 Start: 107420, Stop: 108109, Start Num: 23

Candidate Starts for EggyFarm_206:

(Start: 23 @107420 has 176 MA's), (29, 107513), (30, 107516), (39, 107657), (Start: 41 @107666 has 1 MA's), (47, 107771), (55, 107984), (57, 108020),

Gene: EmToTheThree_198 Start: 105273, Stop: 105962, Start Num: 23

Candidate Starts for EmToTheThree_198:

(6, 105030), (Start: 23 @105273 has 176 MA's), (29, 105366), (Start: 33 @105411 has 1 MA's), (39, 105510), (Start: 41 @105519 has 1 MA's), (47, 105624), (55, 105837), (57, 105873),

Gene: EmmaElysia_200 Start: 104983, Stop: 105672, Start Num: 23

Candidate Starts for EmmaElysia_200:

(6, 104740), (Start: 23 @104983 has 176 MA's), (29, 105076), (Start: 33 @105121 has 1 MA's), (39, 105220), (Start: 41 @105229 has 1 MA's), (47, 105334), (55, 105547), (57, 105583),

Gene: Erdmann_199 Start: 105231, Stop: 105920, Start Num: 23

Candidate Starts for Erdmann_199:

(4, 104946), (Start: 23 @105231 has 176 MA's), (29, 105324), (39, 105468), (Start: 41 @105477 has 1 MA's), (47, 105582), (55, 105795), (57, 105831),

Gene: ErnieJ_190 Start: 103053, Stop: 103742, Start Num: 23

Candidate Starts for ErnieJ_190:

(6, 102810), (Start: 23 @103053 has 176 MA's), (29, 103146), (Start: 33 @103191 has 1 MA's), (39, 103290), (Start: 41 @103299 has 1 MA's), (47, 103404), (55, 103617), (57, 103653),

Gene: Essence_194 Start: 103705, Stop: 104394, Start Num: 23

Candidate Starts for Essence_194:

(6, 103462), (Start: 23 @103705 has 176 MA's), (29, 103798), (Start: 33 @103843 has 1 MA's), (39, 103942), (Start: 41 @103951 has 1 MA's), (47, 104056), (55, 104269), (57, 104305),

Gene: Ewok_197 Start: 105150, Stop: 105839, Start Num: 23

Candidate Starts for Ewok_197:

(4, 104865), (Start: 23 @105150 has 176 MA's), (29, 105243), (39, 105387), (Start: 41 @105396 has 1 MA's), (47, 105501), (55, 105714), (57, 105750),

Gene: Fixie_197 Start: 104485, Stop: 105174, Start Num: 23

Candidate Starts for Fixie_197:

(4, 104200), (Start: 23 @104485 has 176 MA's), (29, 104578), (39, 104722), (Start: 41 @104731 has 1 MA's), (47, 104836), (55, 105049), (57, 105085),

Gene: Flabslab_193 Start: 103195, Stop: 103884, Start Num: 23

Candidate Starts for Flabslab_193:

(6, 102952), (Start: 23 @103195 has 176 MA's), (29, 103288), (Start: 33 @103333 has 1 MA's), (39, 103432), (Start: 41 @103441 has 1 MA's), (47, 103546), (55, 103759), (57, 103795),

Gene: Fludd_198 Start: 104586, Stop: 105275, Start Num: 23

Candidate Starts for Fludd_198:

(6, 104343), (Start: 23 @104586 has 176 MA's), (29, 104679), (Start: 33 @104724 has 1 MA's), (39, 104823), (Start: 41 @104832 has 1 MA's), (47, 104937), (55, 105150), (57, 105186),

Gene: Fongie_198 Start: 104864, Stop: 105553, Start Num: 23

Candidate Starts for Fongie_198:

(6, 104621), (Start: 23 @104864 has 176 MA's), (29, 104957), (Start: 33 @105002 has 1 MA's), (39, 105101), (Start: 41 @105110 has 1 MA's), (47, 105215), (55, 105428), (57, 105464),

Gene: FoxtrotP1_196 Start: 105830, Stop: 106519, Start Num: 23

Candidate Starts for FoxtrotP1_196:

(4, 105545), (Start: 23 @105830 has 176 MA's), (29, 105923), (39, 106067), (Start: 41 @106076 has 1 MA's), (47, 106181), (55, 106394), (57, 106430),

Gene: FrayBell_200 Start: 104368, Stop: 105057, Start Num: 23

Candidate Starts for FrayBell_200:

(6, 104125), (Start: 23 @104368 has 176 MA's), (29, 104461), (Start: 33 @104506 has 1 MA's), (39, 104605), (Start: 41 @104614 has 1 MA's), (47, 104719), (55, 104932), (57, 104968),

Gene: FudgeTart_193 Start: 104297, Stop: 104986, Start Num: 23

Candidate Starts for FudgeTart_193:

(4, 104012), (Start: 23 @104297 has 176 MA's), (29, 104390), (39, 104534), (Start: 41 @104543 has 1 MA's), (47, 104648), (55, 104861), (57, 104897),

Gene: Gabriel_200 Start: 103443, Stop: 104132, Start Num: 23

Candidate Starts for Gabriel_200:

(6, 103200), (Start: 23 @103443 has 176 MA's), (29, 103536), (Start: 33 @103581 has 1 MA's), (39, 103680), (Start: 41 @103689 has 1 MA's), (47, 103794), (55, 104007), (57, 104043),

Gene: Gamgam_198 Start: 103800, Stop: 104489, Start Num: 23

Candidate Starts for Gamgam_198:

(4, 103515), (Start: 23 @103800 has 176 MA's), (29, 103893), (39, 104037), (Start: 41 @104046 has 1 MA's), (47, 104151), (55, 104364), (57, 104400),

Gene: Ghost_197 Start: 104030, Stop: 104719, Start Num: 23

Candidate Starts for Ghost_197:

(6, 103787), (Start: 23 @104030 has 176 MA's), (29, 104123), (Start: 33 @104168 has 1 MA's), (39, 104267), (Start: 41 @104276 has 1 MA's), (47, 104381), (55, 104594), (57, 104630),

Gene: Gizmo_203 Start: 107148, Stop: 107837, Start Num: 23

Candidate Starts for Gizmo_203:

(4, 106863), (Start: 23 @107148 has 176 MA's), (29, 107241), (39, 107385), (Start: 41 @107394 has 1 MA's), (47, 107499), (55, 107712), (57, 107748),

Gene: GlutenPhree_198 Start: 103811, Stop: 104500, Start Num: 23

Candidate Starts for GlutenPhree_198:

(4, 103526), (Start: 23 @103811 has 176 MA's), (29, 103904), (39, 104048), (Start: 41 @104057 has 1 MA's), (47, 104162), (55, 104375), (57, 104411),

Gene: Grasshills_205 Start: 107419, Stop: 108108, Start Num: 23

Candidate Starts for Grasshills_205:

(Start: 23 @107419 has 176 MA's), (29, 107512), (30, 107515), (39, 107656), (Start: 41 @107665 has 1 MA's), (47, 107770), (55, 107983), (57, 108019),

Gene: Greely_187 Start: 102022, Stop: 102657, Start Num: 26

Candidate Starts for Greely_187:

(21, 101896), (22, 101998), (Start: 24 @102007 has 2 MA's), (26, 102022), (27, 102073), (28, 102088), (31, 102115), (34, 102163), (35, 102175), (37, 102208), (44, 102271), (46, 102325), (47, 102355), (49, 102400), (54, 102466),

Gene: Grungle_182 Start: 102067, Stop: 102756, Start Num: 23

Candidate Starts for Grungle_182:

(6, 101824), (Start: 23 @102067 has 176 MA's), (29, 102160), (Start: 33 @102205 has 1 MA's), (39, 102304), (Start: 41 @102313 has 1 MA's), (47, 102418), (55, 102631), (57, 102667),

Gene: Guwapp_192 Start: 102555, Stop: 103244, Start Num: 23

Candidate Starts for Guwapp_192:

(6, 102312), (Start: 23 @102555 has 176 MA's), (29, 102648), (Start: 33 @102693 has 1 MA's), (39, 102792), (Start: 41 @102801 has 1 MA's), (47, 102906), (55, 103119), (57, 103155),

Gene: Halldule_190 Start: 102940, Stop: 103629, Start Num: 23

Candidate Starts for Halldule_190:

(Start: 23 @102940 has 176 MA's), (29, 103033), (30, 103036), (39, 103177), (Start: 41 @103186 has 1 MA's), (47, 103291), (55, 103504), (57, 103540),

Gene: HyRo_185 Start: 104064, Stop: 104753, Start Num: 23

Candidate Starts for HyRo_185:

(6, 103821), (Start: 23 @104064 has 176 MA's), (29, 104157), (Start: 33 @104202 has 1 MA's), (39, 104301), (Start: 41 @104310 has 1 MA's), (47, 104415), (55, 104628), (57, 104664),

Gene: I3_207 Start: 106932, Stop: 107489, Start Num: 33

Candidate Starts for I3_207:

(13, 106434), (14, 106458), (15, 106479), (19, 106575), (20, 106605), (Start: 25 @106797 has 1 MA's), (Start: 33 @106932 has 1 MA's), (34, 106950), (35, 106962), (36, 106992), (Start: 41 @107040 has 1 MA's), (51, 107199), (53, 107217), (56, 107394), (58, 107406),

Gene: IkeLoa_189 Start: 103462, Stop: 104151, Start Num: 23

Candidate Starts for IkeLoa_189:

(6, 103219), (Start: 23 @103462 has 176 MA's), (29, 103555), (Start: 33 @103600 has 1 MA's), (39, 103699), (Start: 41 @103708 has 1 MA's), (47, 103813), (55, 104026), (57, 104062),

Gene: InigoMontoya_200 Start: 104474, Stop: 105163, Start Num: 23

Candidate Starts for InigoMontoya_200:

(4, 104189), (Start: 23 @104474 has 176 MA's), (29, 104567), (39, 104711), (Start: 41 @104720 has 1 MA's), (47, 104825), (55, 105038), (57, 105074),

Gene: InterFolia_200 Start: 106174, Stop: 106863, Start Num: 23

Candidate Starts for InterFolia_200:

(6, 105931), (Start: 23 @106174 has 176 MA's), (29, 106267), (Start: 33 @106312 has 1 MA's), (39, 106411), (Start: 41 @106420 has 1 MA's), (47, 106525), (55, 106738), (57, 106774),

Gene: Iota_192 Start: 104159, Stop: 104848, Start Num: 23

Candidate Starts for Iota_192:

(Start: 23 @104159 has 176 MA's), (29, 104252), (30, 104255), (39, 104396), (Start: 41 @104405 has 1 MA's), (47, 104510), (55, 104723), (57, 104759),

Gene: Issimir_191 Start: 104421, Stop: 105110, Start Num: 23

Candidate Starts for Issimir_191:

(4, 104136), (Start: 23 @104421 has 176 MA's), (29, 104514), (39, 104658), (Start: 41 @104667 has 1 MA's), (47, 104772), (55, 104985), (57, 105021),

Gene: Izajani_196 Start: 105290, Stop: 105979, Start Num: 23

Candidate Starts for Izajani_196:

(4, 105005), (Start: 23 @105290 has 176 MA's), (29, 105383), (39, 105527), (Start: 41 @105536 has 1 MA's), (47, 105641), (55, 105854), (57, 105890),

Gene: JPickles_193 Start: 102459, Stop: 103148, Start Num: 23

Candidate Starts for JPickles_193:

(6, 102216), (Start: 23 @102459 has 176 MA's), (29, 102552), (Start: 33 @102597 has 1 MA's), (39, 102696), (Start: 41 @102705 has 1 MA's), (47, 102810), (55, 103023), (57, 103059),

Gene: Janiyra_201 Start: 105008, Stop: 105697, Start Num: 23

Candidate Starts for Janiyra_201:

(6, 104765), (Start: 23 @105008 has 176 MA's), (29, 105101), (Start: 33 @105146 has 1 MA's), (39, 105245), (Start: 41 @105254 has 1 MA's), (47, 105359), (55, 105572), (57, 105608),

Gene: JayJay_200 Start: 105705, Stop: 106394, Start Num: 23

Candidate Starts for JayJay_200:

(4, 105420), (10, 105666), (Start: 23 @105705 has 176 MA's), (29, 105798), (39, 105942), (Start: 41 @105951 has 1 MA's), (47, 106056), (55, 106269), (57, 106305),

Gene: Jaygup_193 Start: 103520, Stop: 104209, Start Num: 23

Candidate Starts for Jaygup_193:

(6, 103277), (Start: 23 @103520 has 176 MA's), (29, 103613), (Start: 33 @103658 has 1 MA's), (39, 103757), (Start: 41 @103766 has 1 MA's), (47, 103871), (55, 104084), (57, 104120),

Gene: Jedediah_197 Start: 104573, Stop: 105262, Start Num: 23

Candidate Starts for Jedediah_197:

(6, 104330), (Start: 23 @104573 has 176 MA's), (29, 104666), (Start: 33 @104711 has 1 MA's), (39, 104810), (Start: 41 @104819 has 1 MA's), (47, 104924), (55, 105137), (57, 105173),

Gene: Jemmno_196 Start: 103402, Stop: 104091, Start Num: 23

Candidate Starts for Jemmno_196:

(6, 103159), (Start: 23 @103402 has 176 MA's), (29, 103495), (Start: 33 @103540 has 1 MA's), (39, 103639), (Start: 41 @103648 has 1 MA's), (47, 103753), (55, 103966), (57, 104002),

Gene: Jessibeth14_198 Start: 105899, Stop: 106588, Start Num: 23

Candidate Starts for Jessibeth14_198:

(4, 105614), (Start: 23 @105899 has 176 MA's), (29, 105992), (39, 106136), (Start: 41 @106145 has 1 MA's), (47, 106250), (55, 106463), (57, 106499),

Gene: Jezreel_195 Start: 104968, Stop: 105657, Start Num: 23

Candidate Starts for Jezreel_195:

(4, 104683), (Start: 23 @104968 has 176 MA's), (29, 105061), (39, 105205), (Start: 41 @105214 has 1 MA's), (47, 105319), (55, 105532), (57, 105568),

Gene: JigglyPuff_204 Start: 106970, Stop: 107659, Start Num: 23

Candidate Starts for JigglyPuff_204:

(Start: 23 @106970 has 176 MA's), (29, 107063), (30, 107066), (39, 107207), (Start: 41 @107216 has 1 MA's), (47, 107321), (55, 107534), (57, 107570),

Gene: JulietS_188 Start: 101691, Stop: 102380, Start Num: 23

Candidate Starts for JulietS_188:

(6, 101448), (Start: 23 @101691 has 176 MA's), (29, 101784), (Start: 33 @101829 has 1 MA's), (39, 101928), (Start: 41 @101937 has 1 MA's), (47, 102042), (55, 102255), (57, 102291),

Gene: JustHall_192 Start: 103915, Stop: 104604, Start Num: 23

Candidate Starts for JustHall_192:

(6, 103672), (Start: 23 @103915 has 176 MA's), (29, 104008), (Start: 33 @104053 has 1 MA's), (39, 104152), (Start: 41 @104161 has 1 MA's), (47, 104266), (55, 104479), (57, 104515),

Gene: Kamryn_196 Start: 105236, Stop: 105925, Start Num: 23

Candidate Starts for Kamryn_196:

(6, 104993), (Start: 23 @105236 has 176 MA's), (29, 105329), (Start: 33 @105374 has 1 MA's), (39, 105473), (Start: 41 @105482 has 1 MA's), (47, 105587), (55, 105800), (57, 105836),

Gene: Kboogie_201 Start: 104573, Stop: 105262, Start Num: 23

Candidate Starts for Kboogie_201:

(6, 104330), (Start: 23 @104573 has 176 MA's), (29, 104666), (Start: 33 @104711 has 1 MA's), (39, 104810), (Start: 41 @104819 has 1 MA's), (47, 104924), (55, 105137), (57, 105173),

Gene: Khaleesi_197 Start: 105366, Stop: 106055, Start Num: 23

Candidate Starts for Khaleesi_197:

(4, 105081), (Start: 23 @105366 has 176 MA's), (29, 105459), (39, 105603), (Start: 41 @105612 has 1 MA's), (47, 105717), (55, 105930), (57, 105966),

Gene: Koguma_196 Start: 103917, Stop: 104606, Start Num: 23

Candidate Starts for Koguma_196:

(Start: 23 @103917 has 176 MA's), (29, 104010), (30, 104013), (39, 104154), (Start: 41 @104163 has 1 MA's), (47, 104268), (55, 104481), (57, 104517),

Gene: LRRHood_190 Start: 104262, Stop: 104951, Start Num: 23

Candidate Starts for LRRHood_190:

(Start: 23 @104262 has 176 MA's), (29, 104355), (30, 104358), (39, 104499), (Start: 41 @104508 has 1 MA's), (47, 104613), (55, 104826), (57, 104862),

Gene: Labradorite_195 Start: 103012, Stop: 103701, Start Num: 23

Candidate Starts for Labradorite_195:

(6, 102769), (Start: 23 @103012 has 176 MA's), (29, 103105), (Start: 33 @103150 has 1 MA's), (39, 103249), (Start: 41 @103258 has 1 MA's), (47, 103363), (55, 103576), (57, 103612),

Gene: Latch_197 Start: 103810, Stop: 104499, Start Num: 23

Candidate Starts for Latch_197:

(4, 103525), (Start: 23 @103810 has 176 MA's), (29, 103903), (39, 104047), (Start: 41 @104056 has 1 MA's), (47, 104161), (55, 104374), (57, 104410),

Gene: Lee7_198 Start: 106746, Stop: 107435, Start Num: 23

Candidate Starts for Lee7_198:

(4, 106461), (Start: 23 @106746 has 176 MA's), (29, 106839), (39, 106983), (Start: 41 @106992 has 1 MA's), (47, 107097), (55, 107310), (57, 107346),

Gene: Lethe_198 Start: 106009, Stop: 106698, Start Num: 23

Candidate Starts for Lethe_198:

(4, 105724), (Start: 23 @106009 has 176 MA's), (29, 106102), (39, 106246), (Start: 41 @106255 has 1 MA's), (47, 106360), (55, 106573), (57, 106609),

Gene: LifeSavor_196 Start: 104335, Stop: 105024, Start Num: 23

Candidate Starts for LifeSavor_196:

(6, 104092), (Start: 23 @104335 has 176 MA's), (29, 104428), (Start: 33 @104473 has 1 MA's), (39, 104572), (Start: 41 @104581 has 1 MA's), (47, 104686), (55, 104899), (57, 104935),

Gene: LinStu_196 Start: 104858, Stop: 105547, Start Num: 23

Candidate Starts for LinStu_196:

(1, 104042), (6, 104138), (18, 104573), (Start: 23 @104858 has 176 MA's), (29, 104951), (39, 105095), (Start: 41 @105104 has 1 MA's), (47, 105209), (55, 105422), (57, 105458),

Gene: Littleton_200 Start: 105047, Stop: 105736, Start Num: 23

Candidate Starts for Littleton_200:

(6, 104804), (Start: 23 @105047 has 176 MA's), (29, 105140), (Start: 33 @105185 has 1 MA's), (39, 105284), (Start: 41 @105293 has 1 MA's), (47, 105398), (55, 105611), (57, 105647),

Gene: Loanshark_195 Start: 104681, Stop: 105370, Start Num: 23
Candidate Starts for Loanshark_195:
(4, 104396), (Start: 23 @104681 has 176 MA's), (29, 104774), (39, 104918), (Start: 41 @104927 has 1 MA's), (47, 105032), (55, 105245), (57, 105281),

Gene: LolaVinca_195 Start: 105604, Stop: 106293, Start Num: 23
Candidate Starts for LolaVinca_195:
(6, 105361), (Start: 23 @105604 has 176 MA's), (29, 105697), (Start: 33 @105742 has 1 MA's), (39, 105841), (Start: 41 @105850 has 1 MA's), (47, 105955), (55, 106168), (57, 106204),

Gene: LookingGlass_196 Start: 104564, Stop: 105253, Start Num: 23
Candidate Starts for LookingGlass_196:
(6, 104321), (Start: 23 @104564 has 176 MA's), (29, 104657), (Start: 33 @104702 has 1 MA's), (39, 104801), (Start: 41 @104810 has 1 MA's), (47, 104915), (55, 105128), (57, 105164),

Gene: LordLeafolot_198 Start: 105216, Stop: 105905, Start Num: 23
Candidate Starts for LordLeafolot_198:
(6, 104973), (Start: 23 @105216 has 176 MA's), (29, 105309), (Start: 33 @105354 has 1 MA's), (39, 105453), (Start: 41 @105462 has 1 MA's), (47, 105567), (55, 105780), (57, 105816),

Gene: Lukilu_188 Start: 105272, Stop: 105961, Start Num: 23
Candidate Starts for Lukilu_188:
(Start: 23 @105272 has 176 MA's), (29, 105365), (30, 105368), (39, 105509), (Start: 41 @105518 has 1 MA's), (47, 105623), (55, 105836), (57, 105872),

Gene: Lunareta_196 Start: 106217, Stop: 106906, Start Num: 23
Candidate Starts for Lunareta_196:
(2, 105884), (6, 105974), (Start: 23 @106217 has 176 MA's), (29, 106310), (Start: 33 @106355 has 1 MA's), (39, 106454), (Start: 41 @106463 has 1 MA's), (47, 106568), (55, 106781), (57, 106817),

Gene: Maby2021_197 Start: 105810, Stop: 106499, Start Num: 23
Candidate Starts for Maby2021_197:
(4, 105525), (Start: 23 @105810 has 176 MA's), (29, 105903), (39, 106047), (Start: 41 @106056 has 1 MA's), (47, 106161), (55, 106374), (57, 106410),

Gene: Mangeria_198 Start: 105603, Stop: 106292, Start Num: 23
Candidate Starts for Mangeria_198:
(4, 105318), (Start: 23 @105603 has 176 MA's), (29, 105696), (39, 105840), (Start: 41 @105849 has 1 MA's), (47, 105954), (55, 106167), (57, 106203),

Gene: Matsumoto_196 Start: 104561, Stop: 105250, Start Num: 23
Candidate Starts for Matsumoto_196:
(6, 104318), (Start: 23 @104561 has 176 MA's), (29, 104654), (Start: 33 @104699 has 1 MA's), (39, 104798), (Start: 41 @104807 has 1 MA's), (47, 104912), (55, 105125), (57, 105161),

Gene: Maturis_195 Start: 105073, Stop: 105762, Start Num: 23
Candidate Starts for Maturis_195:
(2, 104740), (6, 104830), (Start: 23 @105073 has 176 MA's), (29, 105166), (Start: 33 @105211 has 1 MA's), (39, 105310), (Start: 41 @105319 has 1 MA's), (47, 105424), (55, 105637), (57, 105673),

Gene: McGee_197 Start: 103755, Stop: 104444, Start Num: 23
Candidate Starts for McGee_197:

(6, 103512), (Start: 23 @103755 has 176 MA's), (29, 103848), (Start: 33 @103893 has 1 MA's), (39, 103992), (Start: 41 @104001 has 1 MA's), (47, 104106), (55, 104319), (57, 104355),

Gene: McWolfish_195 Start: 104577, Stop: 105266, Start Num: 23

Candidate Starts for McWolfish_195:

(4, 104292), (Start: 23 @104577 has 176 MA's), (29, 104670), (39, 104814), (Start: 41 @104823 has 1 MA's), (47, 104928), (55, 105141), (57, 105177),

Gene: Megamind_195 Start: 104868, Stop: 105557, Start Num: 23

Candidate Starts for Megamind_195:

(4, 104583), (Start: 23 @104868 has 176 MA's), (29, 104961), (39, 105105), (Start: 41 @105114 has 1 MA's), (47, 105219), (55, 105432), (57, 105468),

Gene: Melpomini_192 Start: 103344, Stop: 104033, Start Num: 23

Candidate Starts for Melpomini_192:

(4, 103059), (Start: 23 @103344 has 176 MA's), (29, 103437), (39, 103581), (Start: 41 @103590 has 1 MA's), (47, 103695), (55, 103908), (57, 103944),

Gene: MikeLiesIn_199 Start: 106004, Stop: 106693, Start Num: 23

Candidate Starts for MikeLiesIn_199:

(4, 105719), (Start: 23 @106004 has 176 MA's), (29, 106097), (39, 106241), (Start: 41 @106250 has 1 MA's), (47, 106355), (55, 106568), (57, 106604),

Gene: Mikro_193 Start: 106244, Stop: 106933, Start Num: 23

Candidate Starts for Mikro_193:

(4, 105959), (Start: 23 @106244 has 176 MA's), (29, 106337), (39, 106481), (Start: 41 @106490 has 1 MA's), (47, 106595), (55, 106808), (57, 106844),

Gene: MoMoMixon_195 Start: 104734, Stop: 105423, Start Num: 23

Candidate Starts for MoMoMixon_195:

(Start: 23 @104734 has 176 MA's), (29, 104827), (30, 104830), (39, 104971), (Start: 41 @104980 has 1 MA's), (47, 105085), (55, 105298), (57, 105334),

Gene: Moby_194 Start: 104018, Stop: 104707, Start Num: 23

Candidate Starts for Moby_194:

(4, 103733), (Start: 23 @104018 has 176 MA's), (29, 104111), (39, 104255), (Start: 41 @104264 has 1 MA's), (47, 104369), (55, 104582), (57, 104618),

Gene: Moiqah_193 Start: 103995, Stop: 104684, Start Num: 23

Candidate Starts for Moiqah_193:

(4, 103710), (Start: 23 @103995 has 176 MA's), (29, 104088), (39, 104232), (Start: 41 @104241 has 1 MA's), (47, 104346), (55, 104559), (57, 104595),

Gene: Momo_198 Start: 103810, Stop: 104499, Start Num: 23

Candidate Starts for Momo_198:

(4, 103525), (Start: 23 @103810 has 176 MA's), (29, 103903), (39, 104047), (Start: 41 @104056 has 1 MA's), (47, 104161), (55, 104374), (57, 104410),

Gene: Montpel_196 Start: 106215, Stop: 106904, Start Num: 23

Candidate Starts for Montpel_196:

(2, 105882), (6, 105972), (Start: 23 @106215 has 176 MA's), (29, 106308), (Start: 33 @106353 has 1 MA's), (39, 106452), (Start: 41 @106461 has 1 MA's), (47, 106566), (55, 106779), (57, 106815),

Gene: Morizzled23_195 Start: 103732, Stop: 104175, Start Num: 41
Candidate Starts for Morizzled23_195:
(40, 103723), (Start: 41 @103732 has 1 MA's), (47, 103837), (55, 104050), (57, 104086),

Gene: Myrna_182 Start: 101680, Stop: 102324, Start Num: 24
Candidate Starts for Myrna_182:
(22, 101671), (Start: 24 @101680 has 2 MA's), (26, 101695), (27, 101746), (32, 101809), (34, 101836),
(35, 101848), (37, 101881), (53, 102091), (54, 102133),

Gene: Naija_198 Start: 104513, Stop: 105202, Start Num: 23
Candidate Starts for Naija_198:
(4, 104228), (Start: 23 @104513 has 176 MA's), (29, 104606), (39, 104750), (Start: 41 @104759 has 1 MA's), (47, 104864), (55, 105077), (57, 105113),

Gene: Napoleon13_195 Start: 103850, Stop: 104539, Start Num: 23
Candidate Starts for Napoleon13_195:
(6, 103607), (Start: 23 @103850 has 176 MA's), (29, 103943), (Start: 33 @103988 has 1 MA's), (39, 104087), (Start: 41 @104096 has 1 MA's), (47, 104201), (55, 104414), (57, 104450),

Gene: Nappy_198 Start: 106206, Stop: 106895, Start Num: 23
Candidate Starts for Nappy_198:
(Start: 23 @106206 has 176 MA's), (29, 106299), (30, 106302), (39, 106443), (Start: 41 @106452 has 1 MA's), (47, 106557), (55, 106770), (57, 106806),

Gene: Naval22_203 Start: 106599, Stop: 107288, Start Num: 23
Candidate Starts for Naval22_203:
(4, 106314), (Start: 23 @106599 has 176 MA's), (29, 106692), (39, 106836), (Start: 41 @106845 has 1 MA's), (47, 106950), (55, 107163), (57, 107199),

Gene: NedWong_197 Start: 105255, Stop: 105944, Start Num: 23
Candidate Starts for NedWong_197:
(4, 104970), (Start: 23 @105255 has 176 MA's), (29, 105348), (39, 105492), (Start: 41 @105501 has 1 MA's), (47, 105606), (55, 105819), (57, 105855),

Gene: Ngannou_194 Start: 102792, Stop: 103481, Start Num: 23
Candidate Starts for Ngannou_194:
(4, 102507), (Start: 23 @102792 has 176 MA's), (29, 102885), (39, 103029), (Start: 41 @103038 has 1 MA's), (47, 103143), (55, 103356), (57, 103392),

Gene: Nidhogg_199 Start: 105648, Stop: 106337, Start Num: 23
Candidate Starts for Nidhogg_199:
(4, 105363), (Start: 23 @105648 has 176 MA's), (29, 105741), (39, 105885), (Start: 41 @105894 has 1 MA's), (47, 105999), (55, 106212), (57, 106248),

Gene: NoodleTree_204 Start: 105555, Stop: 106244, Start Num: 23
Candidate Starts for NoodleTree_204:
(4, 105270), (Start: 23 @105555 has 176 MA's), (29, 105648), (39, 105792), (Start: 41 @105801 has 1 MA's), (47, 105906), (55, 106119), (57, 106155),

Gene: Norm_197 Start: 105248, Stop: 105937, Start Num: 23
Candidate Starts for Norm_197:
(Start: 23 @105248 has 176 MA's), (29, 105341), (30, 105344), (39, 105485), (Start: 41 @105494 has 1 MA's), (47, 105599), (55, 105812), (57, 105848),

Gene: NuevoMundo_200 Start: 106800, Stop: 107489, Start Num: 23

Candidate Starts for NuevoMundo_200:

(6, 106557), (Start: 23 @106800 has 176 MA's), (29, 106893), (Start: 33 @106938 has 1 MA's), (39, 107037), (Start: 41 @107046 has 1 MA's), (47, 107151), (55, 107364), (57, 107400),

Gene: OrediggerDelux_194 Start: 105787, Stop: 106476, Start Num: 23

Candidate Starts for OrediggerDelux_194:

(4, 105502), (Start: 23 @105787 has 176 MA's), (29, 105880), (39, 106024), (Start: 41 @106033 has 1 MA's), (47, 106138), (55, 106351), (57, 106387),

Gene: ParkTD_196 Start: 105119, Stop: 105808, Start Num: 23

Candidate Starts for ParkTD_196:

(4, 104834), (Start: 23 @105119 has 176 MA's), (29, 105212), (39, 105356), (Start: 41 @105365 has 1 MA's), (47, 105470), (55, 105683), (57, 105719),

Gene: Patter_198 Start: 103824, Stop: 104513, Start Num: 23

Candidate Starts for Patter_198:

(4, 103539), (Start: 23 @103824 has 176 MA's), (29, 103917), (39, 104061), (Start: 41 @104070 has 1 MA's), (47, 104175), (55, 104388), (57, 104424),

Gene: Phabba_192 Start: 101582, Stop: 102232, Start Num: 24

Candidate Starts for Phabba_192:

(22, 101573), (Start: 24 @101582 has 2 MA's), (26, 101597), (27, 101648), (28, 101663), (31, 101690), (34, 101738), (35, 101750), (37, 101783), (44, 101846), (46, 101900), (47, 101930), (54, 102041),

Gene: PharkleMinkus_199 Start: 104367, Stop: 105056, Start Num: 23

Candidate Starts for PharkleMinkus_199:

(6, 104124), (Start: 23 @104367 has 176 MA's), (29, 104460), (Start: 33 @104505 has 1 MA's), (39, 104604), (Start: 41 @104613 has 1 MA's), (47, 104718), (55, 104931), (57, 104967),

Gene: Phlegm_201 Start: 104513, Stop: 105202, Start Num: 23

Candidate Starts for Phlegm_201:

(4, 104228), (Start: 23 @104513 has 176 MA's), (29, 104606), (39, 104750), (Start: 41 @104759 has 1 MA's), (47, 104864), (55, 105077), (57, 105113),

Gene: Phox_198 Start: 105468, Stop: 106157, Start Num: 23

Candidate Starts for Phox_198:

(Start: 23 @105468 has 176 MA's), (29, 105561), (30, 105564), (39, 105705), (Start: 41 @105714 has 1 MA's), (47, 105819), (55, 106032), (57, 106068),

Gene: Phusco_196 Start: 103654, Stop: 104343, Start Num: 23

Candidate Starts for Phusco_196:

(6, 103411), (Start: 23 @103654 has 176 MA's), (29, 103747), (Start: 33 @103792 has 1 MA's), (39, 103891), (Start: 41 @103900 has 1 MA's), (47, 104005), (55, 104218), (57, 104254),

Gene: Pier_198 Start: 106342, Stop: 107031, Start Num: 23

Candidate Starts for Pier_198:

(6, 106099), (Start: 23 @106342 has 176 MA's), (29, 106435), (Start: 33 @106480 has 1 MA's), (39, 106579), (Start: 41 @106588 has 1 MA's), (47, 106693), (55, 106906), (57, 106942),

Gene: Pinkcreek_182 Start: 104030, Stop: 104719, Start Num: 23

Candidate Starts for Pinkcreek_182:

(4, 103745), (Start: 23 @104030 has 176 MA's), (29, 104123), (39, 104267), (Start: 41 @104276 has 1 MA's), (47, 104381), (55, 104594), (57, 104630),

Gene: Pio_205 Start: 107537, Stop: 108226, Start Num: 23

Candidate Starts for Pio_205:

(6, 107294), (Start: 23 @107537 has 176 MA's), (29, 107630), (Start: 33 @107675 has 1 MA's), (39, 107774), (Start: 41 @107783 has 1 MA's), (47, 107888), (55, 108101), (57, 108137),

Gene: Pivoine_198 Start: 104513, Stop: 105202, Start Num: 23

Candidate Starts for Pivoine_198:

(4, 104228), (Start: 23 @104513 has 176 MA's), (29, 104606), (39, 104750), (Start: 41 @104759 has 1 MA's), (47, 104864), (55, 105077), (57, 105113),

Gene: Pleione_202 Start: 105597, Stop: 106286, Start Num: 23

Candidate Starts for Pleione_202:

(4, 105312), (Start: 23 @105597 has 176 MA's), (29, 105690), (39, 105834), (Start: 41 @105843 has 1 MA's), (47, 105948), (55, 106161), (57, 106197),

Gene: Primadonna_192 Start: 104174, Stop: 104863, Start Num: 23

Candidate Starts for Primadonna_192:

(Start: 23 @104174 has 176 MA's), (29, 104267), (30, 104270), (39, 104411), (Start: 41 @104420 has 1 MA's), (47, 104525), (55, 104738), (57, 104774),

Gene: Pupusa_201 Start: 105842, Stop: 106531, Start Num: 23

Candidate Starts for Pupusa_201:

(6, 105599), (Start: 23 @105842 has 176 MA's), (29, 105935), (Start: 33 @105980 has 1 MA's), (39, 106079), (Start: 41 @106088 has 1 MA's), (47, 106193), (55, 106406), (57, 106442),

Gene: PurduePete_198 Start: 105825, Stop: 106514, Start Num: 23

Candidate Starts for PurduePete_198:

(4, 105540), (Start: 23 @105825 has 176 MA's), (29, 105918), (39, 106062), (Start: 41 @106071 has 1 MA's), (47, 106176), (55, 106389), (57, 106425),

Gene: QBert_189 Start: 103869, Stop: 104558, Start Num: 23

Candidate Starts for QBert_189:

(6, 103149), (18, 103584), (Start: 23 @103869 has 176 MA's), (29, 103962), (39, 104106), (Start: 41 @104115 has 1 MA's), (47, 104220), (55, 104433), (57, 104469),

Gene: Quasimodo_200 Start: 105448, Stop: 106137, Start Num: 23

Candidate Starts for Quasimodo_200:

(6, 105205), (Start: 23 @105448 has 176 MA's), (29, 105541), (Start: 33 @105586 has 1 MA's), (39, 105685), (Start: 41 @105694 has 1 MA's), (47, 105799), (55, 106012), (57, 106048),

Gene: Rabinovish_191 Start: 105723, Stop: 106412, Start Num: 23

Candidate Starts for Rabinovish_191:

(6, 105480), (Start: 23 @105723 has 176 MA's), (29, 105816), (Start: 33 @105861 has 1 MA's), (39, 105960), (Start: 41 @105969 has 1 MA's), (47, 106074), (55, 106287), (57, 106323),

Gene: Rahel_198 Start: 104248, Stop: 104937, Start Num: 23

Candidate Starts for Rahel_198:

(6, 104005), (Start: 23 @104248 has 176 MA's), (29, 104341), (Start: 33 @104386 has 1 MA's), (39, 104485), (Start: 41 @104494 has 1 MA's), (47, 104599), (55, 104812), (57, 104848),

Gene: Rizal_190 Start: 103075, Stop: 103764, Start Num: 23

Candidate Starts for Rizal_190:

(6, 102832), (Start: 23 @103075 has 176 MA's), (29, 103168), (Start: 33 @103213 has 1 MA's), (39, 103312), (Start: 41 @103321 has 1 MA's), (47, 103426), (55, 103639), (57, 103675),

Gene: RoMag_192 Start: 104559, Stop: 105248, Start Num: 23

Candidate Starts for RoMag_192:

(6, 104316), (Start: 23 @104559 has 176 MA's), (29, 104652), (Start: 33 @104697 has 1 MA's), (39, 104796), (Start: 41 @104805 has 1 MA's), (47, 104910), (55, 105123), (57, 105159),

Gene: Rocha_195 Start: 104310, Stop: 104999, Start Num: 23

Candidate Starts for Rocha_195:

(4, 104025), (Start: 23 @104310 has 176 MA's), (29, 104403), (39, 104547), (Start: 41 @104556 has 1 MA's), (47, 104661), (55, 104874), (57, 104910),

Gene: Ronan_193 Start: 102951, Stop: 103640, Start Num: 23

Candidate Starts for Ronan_193:

(Start: 23 @102951 has 176 MA's), (29, 103044), (30, 103047), (39, 103188), (Start: 41 @103197 has 1 MA's), (47, 103302), (55, 103515), (57, 103551),

Gene: Roots515_200 Start: 106376, Stop: 107065, Start Num: 23

Candidate Starts for Roots515_200:

(4, 106091), (Start: 23 @106376 has 176 MA's), (29, 106469), (39, 106613), (Start: 41 @106622 has 1 MA's), (47, 106727), (55, 106940), (57, 106976),

Gene: SVoro_193 Start: 104860, Stop: 105549, Start Num: 23

Candidate Starts for SVoro_193:

(6, 104617), (Start: 23 @104860 has 176 MA's), (29, 104953), (39, 105097), (Start: 41 @105106 has 1 MA's), (47, 105211), (55, 105424), (57, 105460),

Gene: Salacia_197 Start: 104651, Stop: 105340, Start Num: 23

Candidate Starts for Salacia_197:

(6, 104408), (Start: 23 @104651 has 176 MA's), (29, 104744), (Start: 33 @104789 has 1 MA's), (39, 104888), (Start: 41 @104897 has 1 MA's), (47, 105002), (55, 105215), (57, 105251),

Gene: Sauce_193 Start: 103465, Stop: 104154, Start Num: 23

Candidate Starts for Sauce_193:

(6, 103222), (Start: 23 @103465 has 176 MA's), (29, 103558), (Start: 33 @103603 has 1 MA's), (39, 103702), (Start: 41 @103711 has 1 MA's), (47, 103816), (55, 104029), (57, 104065),

Gene: ScottMcG_191 Start: 103581, Stop: 104270, Start Num: 23

Candidate Starts for ScottMcG_191:

(4, 103296), (Start: 23 @103581 has 176 MA's), (29, 103674), (39, 103818), (Start: 41 @103827 has 1 MA's), (47, 103932), (55, 104145), (57, 104181),

Gene: Sebata_199 Start: 106283, Stop: 106972, Start Num: 23

Candidate Starts for Sebata_199:

(1, 105467), (6, 105563), (18, 105998), (Start: 23 @106283 has 176 MA's), (29, 106376), (39, 106520), (Start: 41 @106529 has 1 MA's), (47, 106634), (55, 106847), (57, 106883),

Gene: Shaqnato_189 Start: 103991, Stop: 104680, Start Num: 23

Candidate Starts for Shaqnato_189:

(6, 103748), (Start: 23 @103991 has 176 MA's), (29, 104084), (Start: 33 @104129 has 1 MA's), (39, 104228), (Start: 41 @104237 has 1 MA's), (47, 104342), (55, 104555), (57, 104591),

Gene: Shelob_199 Start: 106731, Stop: 107420, Start Num: 23

Candidate Starts for Shelob_199:

(4, 106446), (Start: 23 @106731 has 176 MA's), (29, 106824), (39, 106968), (Start: 41 @106977 has 1 MA's), (47, 107082), (55, 107295), (57, 107331),

Gene: ShiaLabeouf_194 Start: 103456, Stop: 104145, Start Num: 23

Candidate Starts for ShiaLabeouf_194:

(6, 103213), (Start: 23 @103456 has 176 MA's), (29, 103549), (Start: 33 @103594 has 1 MA's), (39, 103693), (Start: 41 @103702 has 1 MA's), (47, 103807), (55, 104020), (57, 104056),

Gene: Shnickers_195 Start: 103520, Stop: 104209, Start Num: 23

Candidate Starts for Shnickers_195:

(6, 103277), (Start: 23 @103520 has 176 MA's), (29, 103613), (Start: 33 @103658 has 1 MA's), (39, 103757), (Start: 41 @103766 has 1 MA's), (47, 103871), (55, 104084), (57, 104120),

Gene: Shrimp_199 Start: 105577, Stop: 106266, Start Num: 23

Candidate Starts for Shrimp_199:

(Start: 23 @105577 has 176 MA's), (29, 105670), (30, 105673), (39, 105814), (Start: 41 @105823 has 1 MA's), (47, 105928), (55, 106141), (57, 106177),

Gene: SilverDipper_201 Start: 105069, Stop: 105758, Start Num: 23

Candidate Starts for SilverDipper_201:

(4, 104784), (Start: 23 @105069 has 176 MA's), (29, 105162), (39, 105306), (Start: 41 @105315 has 1 MA's), (47, 105420), (55, 105633), (57, 105669),

Gene: SmallFry_197 Start: 103614, Stop: 104303, Start Num: 23

Candidate Starts for SmallFry_197:

(6, 103371), (Start: 23 @103614 has 176 MA's), (29, 103707), (Start: 33 @103752 has 1 MA's), (39, 103851), (Start: 41 @103860 has 1 MA's), (47, 103965), (55, 104178), (57, 104214),

Gene: Spec_192 Start: 103805, Stop: 104494, Start Num: 23

Candidate Starts for Spec_192:

(6, 103562), (Start: 23 @103805 has 176 MA's), (29, 103898), (Start: 33 @103943 has 1 MA's), (39, 104042), (Start: 41 @104051 has 1 MA's), (47, 104156), (55, 104369), (57, 104405),

Gene: Specks_201 Start: 105923, Stop: 106612, Start Num: 23

Candidate Starts for Specks_201:

(6, 105680), (Start: 23 @105923 has 176 MA's), (29, 106016), (Start: 33 @106061 has 1 MA's), (39, 106160), (Start: 41 @106169 has 1 MA's), (47, 106274), (55, 106487), (57, 106523),

Gene: Sprinklers_195 Start: 104172, Stop: 104861, Start Num: 23

Candidate Starts for Sprinklers_195:

(Start: 23 @104172 has 176 MA's), (29, 104265), (30, 104268), (39, 104409), (Start: 41 @104418 has 1 MA's), (47, 104523), (55, 104736), (57, 104772),

Gene: Spud_192 Start: 104193, Stop: 104882, Start Num: 23

Candidate Starts for Spud_192:

(6, 103950), (Start: 23 @104193 has 176 MA's), (29, 104286), (Start: 33 @104331 has 1 MA's), (39, 104430), (Start: 41 @104439 has 1 MA's), (47, 104544), (55, 104757), (57, 104793),

Gene: SrishMeg2525_195 Start: 105357, Stop: 106046, Start Num: 23

Candidate Starts for SrishMeg2525_195:

(4, 105072), (Start: 23 @105357 has 176 MA's), (29, 105450), (39, 105594), (Start: 41 @105603 has 1 MA's), (47, 105708), (55, 105921), (57, 105957),

Gene: StephanieG_194 Start: 105388, Stop: 106077, Start Num: 23

Candidate Starts for StephanieG_194:

(6, 105145), (Start: 23 @105388 has 176 MA's), (29, 105481), (Start: 33 @105526 has 1 MA's), (39, 105625), (Start: 41 @105634 has 1 MA's), (47, 105739), (55, 105952), (57, 105988),

Gene: Stubby_182 Start: 104233, Stop: 104922, Start Num: 23

Candidate Starts for Stubby_182:

(6, 103990), (Start: 23 @104233 has 176 MA's), (29, 104326), (Start: 33 @104371 has 1 MA's), (39, 104470), (Start: 41 @104479 has 1 MA's), (47, 104584), (55, 104797), (57, 104833),

Gene: StubbySaigey_202 Start: 104603, Stop: 105292, Start Num: 23

Candidate Starts for StubbySaigey_202:

(4, 104318), (Start: 23 @104603 has 176 MA's), (29, 104696), (39, 104840), (Start: 41 @104849 has 1 MA's), (47, 104954), (55, 105167), (57, 105203),

Gene: Substance289_194 Start: 103662, Stop: 104351, Start Num: 23

Candidate Starts for Substance289_194:

(6, 103419), (Start: 23 @103662 has 176 MA's), (29, 103755), (Start: 33 @103800 has 1 MA's), (39, 103899), (Start: 41 @103908 has 1 MA's), (47, 104013), (55, 104226), (57, 104262),

Gene: Tainan_198 Start: 104942, Stop: 105631, Start Num: 23

Candidate Starts for Tainan_198:

(6, 104699), (Start: 23 @104942 has 176 MA's), (29, 105035), (Start: 33 @105080 has 1 MA's), (39, 105179), (Start: 41 @105188 has 1 MA's), (47, 105293), (55, 105506), (57, 105542),

Gene: Teardrop_194 Start: 103118, Stop: 103807, Start Num: 23

Candidate Starts for Teardrop_194:

(6, 102875), (Start: 23 @103118 has 176 MA's), (29, 103211), (Start: 33 @103256 has 1 MA's), (39, 103355), (Start: 41 @103364 has 1 MA's), (47, 103469), (55, 103682), (57, 103718),

Gene: TinyTim_196 Start: 104206, Stop: 104895, Start Num: 23

Candidate Starts for TinyTim_196:

(4, 103921), (Start: 23 @104206 has 176 MA's), (29, 104299), (39, 104443), (Start: 41 @104452 has 1 MA's), (47, 104557), (55, 104770), (57, 104806),

Gene: Tonenili_218 Start: 110509, Stop: 111189, Start Num: 25

Candidate Starts for Tonenili_218:

(13, 110146), (14, 110170), (15, 110191), (19, 110287), (20, 110317), (Start: 25 @110509 has 1 MA's), (Start: 33 @110644 has 1 MA's), (34, 110662), (35, 110674), (36, 110704), (38, 110722), (43, 110755), (45, 110782), (48, 110866), (52, 110905), (53, 110917), (56, 111094), (58, 111106),

Gene: Tortoise16_195 Start: 104359, Stop: 105048, Start Num: 23

Candidate Starts for Tortoise16_195:

(6, 104116), (Start: 23 @104359 has 176 MA's), (29, 104452), (Start: 33 @104497 has 1 MA's), (39, 104596), (Start: 41 @104605 has 1 MA's), (47, 104710), (55, 104923), (57, 104959),

Gene: Trinitium_194 Start: 103953, Stop: 104642, Start Num: 23

Candidate Starts for Trinitium_194:

(6, 103710), (Start: 23 @103953 has 176 MA's), (29, 104046), (Start: 33 @104091 has 1 MA's), (39, 104190), (Start: 41 @104199 has 1 MA's), (47, 104304), (55, 104517), (57, 104553),

Gene: Turret_191 Start: 103535, Stop: 104224, Start Num: 23

Candidate Starts for Turret_191:

(6, 103292), (Start: 23 @103535 has 176 MA's), (29, 103628), (Start: 33 @103673 has 1 MA's), (39, 103772), (Start: 41 @103781 has 1 MA's), (47, 103886), (55, 104099), (57, 104135),

Gene: Tyke_195 Start: 105726, Stop: 106415, Start Num: 23

Candidate Starts for Tyke_195:

(6, 105483), (Start: 23 @105726 has 176 MA's), (29, 105819), (Start: 33 @105864 has 1 MA's), (39, 105963), (Start: 41 @105972 has 1 MA's), (47, 106077), (55, 106290), (57, 106326),

Gene: ValleyTerrace_198 Start: 103810, Stop: 104499, Start Num: 23

Candidate Starts for ValleyTerrace_198:

(4, 103525), (Start: 23 @103810 has 176 MA's), (29, 103903), (39, 104047), (Start: 41 @104056 has 1 MA's), (47, 104161), (55, 104374), (57, 104410),

Gene: Vortrix_216 Start: 109296, Stop: 109976, Start Num: 25

Candidate Starts for Vortrix_216:

(16, 108981), (17, 108996), (19, 109074), (20, 109104), (Start: 25 @109296 has 1 MA's), (Start: 33 @109431 has 1 MA's), (34, 109449), (35, 109461), (36, 109491), (38, 109509), (43, 109542), (45, 109569), (48, 109653), (52, 109692), (53, 109704), (56, 109881), (58, 109893),

Gene: Wally_196 Start: 104103, Stop: 104792, Start Num: 23

Candidate Starts for Wally_196:

(6, 103860), (Start: 23 @104103 has 176 MA's), (29, 104196), (Start: 33 @104241 has 1 MA's), (39, 104340), (Start: 41 @104349 has 1 MA's), (47, 104454), (55, 104667), (57, 104703),

Gene: Willis_198 Start: 105017, Stop: 105706, Start Num: 23

Candidate Starts for Willis_198:

(4, 104732), (Start: 23 @105017 has 176 MA's), (29, 105110), (39, 105254), (Start: 41 @105263 has 1 MA's), (47, 105368), (55, 105581), (57, 105617),

Gene: Yassified_194 Start: 104149, Stop: 104838, Start Num: 23

Candidate Starts for Yassified_194:

(Start: 23 @104149 has 176 MA's), (29, 104242), (30, 104245), (39, 104386), (Start: 41 @104395 has 1 MA's), (47, 104500), (55, 104713), (57, 104749),

Gene: YemiJoy2021_198 Start: 105773, Stop: 106462, Start Num: 23

Candidate Starts for YemiJoy2021_198:

(4, 105488), (Start: 23 @105773 has 176 MA's), (29, 105866), (39, 106010), (Start: 41 @106019 has 1 MA's), (47, 106124), (55, 106337), (57, 106373),

Gene: YoungMoneyMata_196 Start: 104315, Stop: 105004, Start Num: 23

Candidate Starts for YoungMoneyMata_196:

(6, 104072), (Start: 23 @104315 has 176 MA's), (29, 104408), (Start: 33 @104453 has 1 MA's), (39, 104552), (Start: 41 @104561 has 1 MA's), (47, 104666), (55, 104879), (57, 104915),

Gene: Yucca_198 Start: 105765, Stop: 106454, Start Num: 23

Candidate Starts for Yucca_198:

(4, 105480), (Start: 23 @105765 has 176 MA's), (29, 105858), (39, 106002), (Start: 41 @106011 has 1 MA's), (47, 106116), (55, 106329), (57, 106365),

Gene: Zalkecks_197 Start: 104846, Stop: 105535, Start Num: 23

Candidate Starts for Zalkecks_197:

(4, 104561), (Start: 23 @104846 has 176 MA's), (29, 104939), (39, 105083), (Start: 41 @105092 has 1 MA's), (47, 105197), (55, 105410), (57, 105446),

Gene: Zeenon_200 Start: 105417, Stop: 106106, Start Num: 23

Candidate Starts for Zeenon_200:

(4, 105132), (Start: 23 @105417 has 176 MA's), (29, 105510), (39, 105654), (Start: 41 @105663 has 1 MA's), (47, 105768), (55, 105981), (57, 106017),

Gene: ZygoTaiga_194 Start: 106037, Stop: 106726, Start Num: 23

Candidate Starts for ZygoTaiga_194:

(4, 105752), (Start: 23 @106037 has 176 MA's), (29, 106130), (39, 106274), (Start: 41 @106283 has 1 MA's), (47, 106388), (55, 106601), (57, 106637),