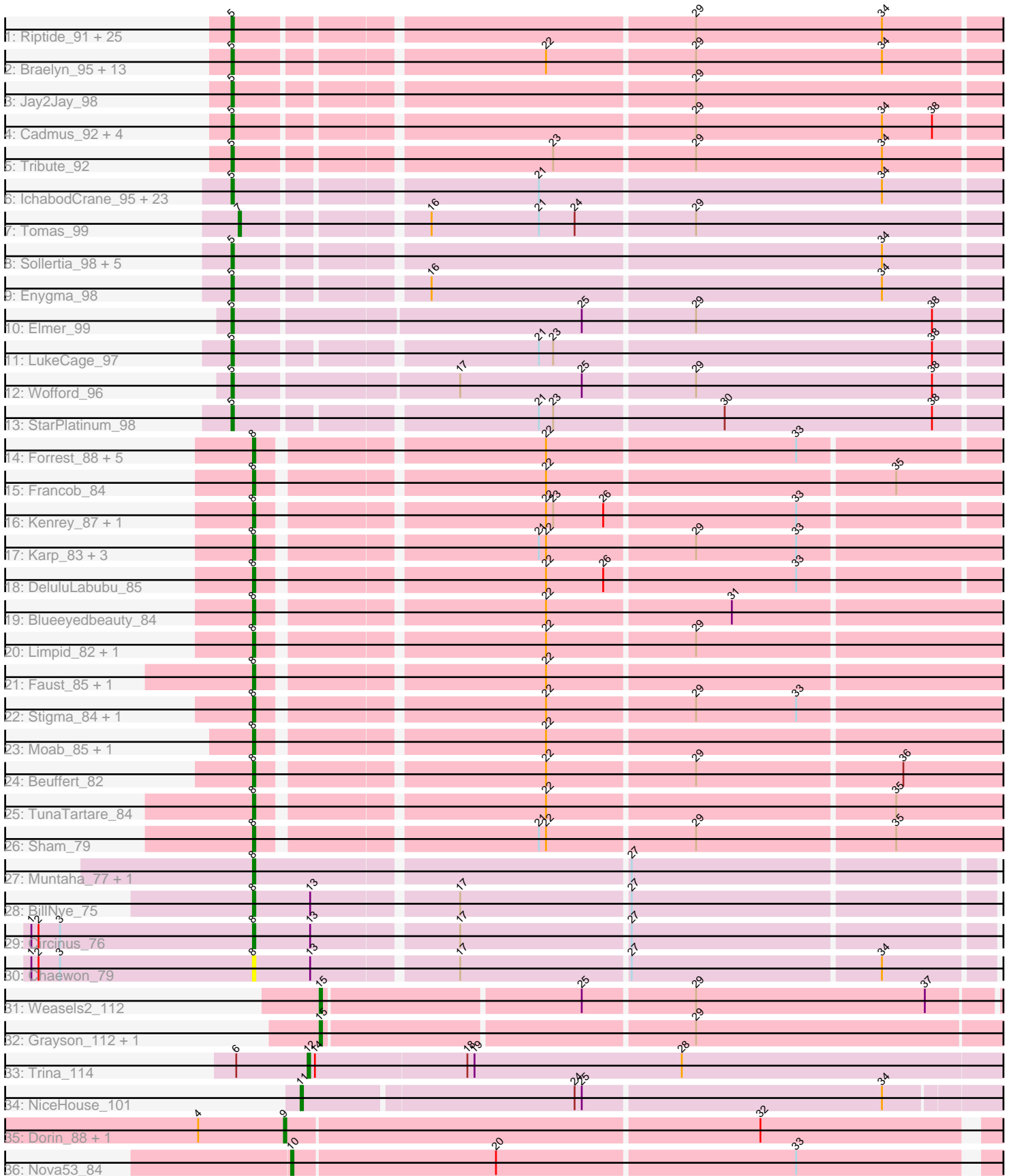


Pham 292625



Note: Tracks are now grouped by subcluster and scaled. Switching in subcluster is indicated by changes in track color. Track scale is now set by default to display the region 30 bp upstream of start 1 to 30 bp downstream of the last possible start. If this default region is judged to be packed too tightly with annotated starts, the track will be further scaled to only show that region of the ORF with annotated starts. This action will be indicated by adding "Zoomed" to the title. For starts, yellow indicates the location of called starts comprised solely of Glimmer/GeneMark auto-annotations, green indicates the location of called starts with at least 1 manual gene annotation.

Pham 292625 Report

This analysis was run 04/18/26 on database version 643.

Pham number 292625 has 122 members, 7 are drafts.

Phages represented in each track:

- Track 1 : Riptide_91, Evy_94, Bmoc_93, Shuckle_92, Cursive_92, PacManQ_93, Peebs_93, Coogler_94, Pepperwood_94, Larnav_94, Marsus_93, Leo04_95, Sushi23_93, HangryHippo_94, Cross_94, Teutsch_94, Warpy_97, Anedea_94, Watermoore_93, BlueOtter_94, EGole_95, Scheme_95, Samisti12_94, Lululemon_93, LilSaint_93, Targaryen_94
- Track 2 : Braelyn_95, FreddyDRoo_92, Bartholomune_93, PinkiePie_93, Davielle_92, Mildred21_93, Paradiddles_90, Liandry_93, Eliot67_92, Navo_92, WhereRU_91, NootNoot_90, Persimmon_93, Squillium_94
- Track 3 : Jay2Jay_98
- Track 4 : Cadmus_92, Angela_92, Daubenski_96, MulchMansion_92, LilMartin_92
- Track 5 : Tribute_92
- Track 6 : IchabodCrane_95, Spelly_98, Bordeaux_96, Brizzy_97, Amabiko_98, CeilingFan_97, MindFlayer_95, Gibbi_102, Battuta_96, Quarant19_97, AcciDwight_101, SaltySpitoon_97, PumpkinSpice_97, Starbow_96, Rikishi_97, Wipeout_95, TomSawyer_96, Spilled_99, Jollison_97, Karimac_97, Mugiwara_97, Birchlyn_95, KentuckyRacer_98, JimJam_98
- Track 7 : Tomas_99
- Track 8 : Sollertia_98, Genie2_98, AngryGiraffe_97, Stanimal_98, BoomerJR_98, Yaboi_98
- Track 9 : Enygma_98
- Track 10 : Elmer_99
- Track 11 : LukeCage_97
- Track 12 : Wofford_96
- Track 13 : StarPlatinum_98
- Track 14 : Forrest_88, MeganTheeKilla_84, Gilson_86, Maupel_85, Jada_86, Emma1919_87
- Track 15 : Francob_84
- Track 16 : Kenrey_87, Phredrick_85
- Track 17 : Karp_83, Comrade_85, Belfort_87, Westy_86
- Track 18 : DeluluLabubu_85
- Track 19 : Blueeyedbeauty_84
- Track 20 : Limpid_82, Annadreamy_83
- Track 21 : Faust_85, SeresaTree_85
- Track 22 : Stigma_84, SparkleGoddess_85
- Track 23 : Moab_85, Patelgo_85
- Track 24 : Beuffert_82
- Track 25 : TunaTartare_84

- Track 26 : Sham_79
- Track 27 : Muntaha_77, Wakanda_76
- Track 28 : BillNye_75
- Track 29 : Circinus_76
- Track 30 : Chaewon_79
- Track 31 : Weasels2_112
- Track 32 : Grayson_112, Peregrin_110
- Track 33 : Trina_114
- Track 34 : NiceHouse_101
- Track 35 : Dorin_88, Francesca_88
- Track 36 : Nova53_84

Summary of Final Annotations (See graph section above for start numbers):

The start number called the most often in the published annotations is 5, it was called in 78 of the 115 non-draft genes in the pham.

Genes that call this "Most Annotated" start:

- AcciDwight_101, Amabiko_98, Anedea_94, Angela_92, AngryGiraffe_97, Bartholomune_93, Battuta_96, Birchlyn_95, BlueOtter_94, Bmoc_93, BoomerJR_98, Bordeaux_96, Braelyn_95, Brizzy_97, Cadmus_92, CeilingFan_97, Coogler_94, Cross_94, Cursive_92, Daubenski_96, Davielle_92, EGole_95, Eliot67_92, Elmer_99, Enygma_98, Evy_94, FreddyDRoo_92, Genie2_98, Gibbi_102, HangryHippo_94, IchabodCrane_95, Jay2Jay_98, JimJam_98, Jollison_97, Karimac_97, KentuckyRacer_98, Larnav_94, Leo04_95, Liandry_93, LilMartin_92, LilSaint_93, LukeCage_97, Lululemon_93, Marsus_93, Mildred21_93, MindFlayer_95, Mugiwara_97, MulchMansion_92, Navo_92, NootNoot_90, PacManQ_93, Paradiddles_90, Peebs_93, Pepperwood_94, Persimmon_93, PinkiePie_93, PumpkinSpice_97, Quarant19_97, Rikishi_97, Riptide_91, SaltySpittoon_97, Samisti12_94, Scheme_95, Shuckle_92, Sollertia_98, Spelly_98, Spilled_99, Squillium_94, Stanimal_98, StarPlatinum_98, Starbow_96, Sushi23_93, Targaryen_94, Teutsch_94, TomSawyer_96, Tribute_92, Warpy_97, Watermoore_93, WhereRU_91, Wipeout_95, Wofford_96, Yaboi_98,

Genes that have the "Most Annotated" start but do not call it:

-

Genes that do not have the "Most Annotated" start:

- Annadreamy_83, Belfort_87, Beuffert_82, BillNye_75, Blueeyedbeauty_84, Chaewon_79, Circinus_76, Comrade_85, DeluluLabubu_85, Dorin_88, Emma1919_87, Faust_85, Forrest_88, Francesca_88, Francob_84, Gilson_86, Grayson_112, Jada_86, Karp_83, Kenrey_87, Limpid_82, Maupel_85, MeganTheeKilla_84, Moab_85, Muntaha_77, NiceHouse_101, Nova53_84, Patelgo_85, Peregrin_110, Phredrick_85, SeresaTree_85, Sham_79, SparkleGoddess_85, Stigma_84, Tomas_99, Trina_114, TunaTartare_84, Wakanda_76, Weasels2_112, Westy_86,

Summary by start number:

Start 5:

- Found in 82 of 122 (67.2%) of genes in pham
- Manual Annotations of this start: 78 of 115
- Called 100.0% of time when present
- Phage (with cluster) where this start called: AcciDwight_101 (BE2), Amabiko_98 (BE2), Anedeia_94 (BE1), Angela_92 (BE1), AngryGiraffe_97 (BE2), Bartholomune_93 (BE1), Battuta_96 (BE2), Birchlyn_95 (BE2), BlueOtter_94 (BE1), Bmoc_93 (BE1), BoomerJR_98 (BE2), Bordeaux_96 (BE2), Braelyn_95 (BE1), Brizzy_97 (BE2), Cadmus_92 (BE1), CeilingFan_97 (BE2), Coogler_94 (BE1), Cross_94 (BE1), Cursive_92 (BE1), Daubenski_96 (BE1), Davielle_92 (BE1), EGole_95 (BE1), Eliot67_92 (BE1), Elmer_99 (BE2), Enygma_98 (BE2), Evy_94 (BE1), FreddyDRoo_92 (BE1), Genie2_98 (BE2), Gibbi_102 (BE2), HangryHippo_94 (BE1), IchabodCrane_95 (BE2), Jay2Jay_98 (BE1), JimJam_98 (BE2), Jollison_97 (BE2), Karimac_97 (BE2), KentuckyRacer_98 (BE2), Larnav_94 (BE1), Leo04_95 (BE1), Liandry_93 (BE1), LilMartin_92 (BE1), LilSaint_93 (BE1), LukeCage_97 (BE2), Lululemon_93 (BE1), Marsus_93 (BE1), Mildred21_93 (BE1), MindFlayer_95 (BE2), Mugiwara_97 (BE2), MulchMansion_92 (BE1), Navo_92 (BE1), NootNoot_90 (BE1), PacManQ_93 (BE1), Paradiddles_90 (BE1), Peebs_93 (BE1), Pepperwood_94 (BE1), Persimmon_93 (BE1), PinkiePie_93 (BE1), PumpkinSpice_97 (BE2), Quarant19_97 (BE2), Rikishi_97 (BE2), Riptide_91 (BE1), SaltySpittoon_97 (BE2), Samisti12_94 (BE1), Scheme_95 (BE1), Shuckle_92 (BE1), Sollertia_98 (BE2), Spelly_98 (BE2), Spilled_99 (BE2), Squillum_94 (BE1), Stanimal_98 (BE2), StarPlatinum_98 (BE2), Starbow_96 (BE2), Sushi23_93 (BE1), Targaryen_94 (BE1), Teutsch_94 (BE1), TomSawyer_96 (BE2), Tribute_92 (BE1), Warpy_97 (BE1), Watermoore_93 (BE1), WhereRU_91 (BE1), Wipeout_95 (BE2), Wofford_96 (BE2), Yaboi_98 (BE2),

Start 7:

- Found in 1 of 122 (0.8%) of genes in pham
- Manual Annotations of this start: 1 of 115
- Called 100.0% of time when present
- Phage (with cluster) where this start called: Tomas_99 (BE2),

Start 8:

- Found in 31 of 122 (25.4%) of genes in pham
- Manual Annotations of this start: 28 of 115
- Called 100.0% of time when present
- Phage (with cluster) where this start called: Annadreamy_83 (BK1), Belfort_87 (BK1), Beuffert_82 (BK1), BillNye_75 (BK2), Blueeyedbeauty_84 (BK1), Chaewon_79 (BK2), Circinus_76 (BK2), Comrade_85 (BK1), DeluluLabubu_85 (BK1), Emma1919_87 (BK1), Faust_85 (BK1), Forrest_88 (BK1), Francob_84 (BK1), Gilson_86 (BK1), Jada_86 (BK1), Karp_83 (BK1), Kenrey_87 (BK1), Limpid_82 (BK1), Maupel_85 (BK1), MeganTheeKilla_84 (BK1), Moab_85 (BK1), Muntaha_77 (BK2), Patelgo_85 (BK1), Phredrick_85 (BK1), SeresaTree_85 (BK1), Sham_79 (BK1), SparkleGoddess_85 (BK1), Stigma_84 (BK1), TunaTartare_84 (BK1), Wakanda_76 (BK2), Westy_86 (BK1),

Start 9:

- Found in 2 of 122 (1.6%) of genes in pham
- Manual Annotations of this start: 2 of 115
- Called 100.0% of time when present
- Phage (with cluster) where this start called: Dorin_88 (CG), Francesca_88 (CG),

Start 10:

- Found in 1 of 122 (0.8%) of genes in pham
- Manual Annotations of this start: 1 of 115
- Called 100.0% of time when present
- Phage (with cluster) where this start called: Nova53_84 (CG),

Start 11:

- Found in 1 of 122 (0.8%) of genes in pham
- Manual Annotations of this start: 1 of 115
- Called 100.0% of time when present
- Phage (with cluster) where this start called: NiceHouse_101 (CE),

Start 12:

- Found in 1 of 122 (0.8%) of genes in pham
- Manual Annotations of this start: 1 of 115
- Called 100.0% of time when present
- Phage (with cluster) where this start called: Trina_114 (CE),

Start 15:

- Found in 3 of 122 (2.5%) of genes in pham
- Manual Annotations of this start: 3 of 115
- Called 100.0% of time when present
- Phage (with cluster) where this start called: Grayson_112 (CB), Peregrin_110 (CB), Weasels2_112 (CB),

Summary by clusters:

There are 7 clusters represented in this pham: CB, CG, CE, BK1, BK2, BE2, BE1,

Info for manual annotations of cluster BE1:

- Start number 5 was manually annotated 45 times for cluster BE1.

Info for manual annotations of cluster BE2:

- Start number 5 was manually annotated 33 times for cluster BE2.
- Start number 7 was manually annotated 1 time for cluster BE2.

Info for manual annotations of cluster BK1:

- Start number 8 was manually annotated 24 times for cluster BK1.

Info for manual annotations of cluster BK2:

- Start number 8 was manually annotated 4 times for cluster BK2.

Info for manual annotations of cluster CB:

- Start number 15 was manually annotated 3 times for cluster CB.

Info for manual annotations of cluster CE:

- Start number 11 was manually annotated 1 time for cluster CE.
- Start number 12 was manually annotated 1 time for cluster CE.

Info for manual annotations of cluster CG:

- Start number 9 was manually annotated 2 times for cluster CG.
- Start number 10 was manually annotated 1 time for cluster CG.

Gene Information:

Gene: AcciDwight_101 Start: 68317, Stop: 68637, Start Num: 5

Candidate Starts for AcciDwight_101:

(Start: 5 @68317 has 78 MA's), (21, 68434), (34, 68575),

Gene: Amabiko_98 Start: 68362, Stop: 68682, Start Num: 5

Candidate Starts for Amabiko_98:

(Start: 5 @68362 has 78 MA's), (21, 68479), (34, 68620),

Gene: Anedea_94 Start: 67639, Stop: 67959, Start Num: 5

Candidate Starts for Anedea_94:

(Start: 5 @67639 has 78 MA's), (29, 67819), (34, 67897),

Gene: Angela_92 Start: 67111, Stop: 67431, Start Num: 5

Candidate Starts for Angela_92:

(Start: 5 @67111 has 78 MA's), (29, 67291), (34, 67369), (38, 67390),

Gene: AngryGiraffe_97 Start: 68302, Stop: 68622, Start Num: 5

Candidate Starts for AngryGiraffe_97:

(Start: 5 @68302 has 78 MA's), (34, 68560),

Gene: Annadreamy_83 Start: 61223, Stop: 61534, Start Num: 8

Candidate Starts for Annadreamy_83:

(Start: 8 @61223 has 28 MA's), (22, 61334), (29, 61394),

Gene: Bartholomune_93 Start: 67538, Stop: 67858, Start Num: 5

Candidate Starts for Bartholomune_93:

(Start: 5 @67538 has 78 MA's), (22, 67658), (29, 67718), (34, 67796),

Gene: Battuta_96 Start: 68336, Stop: 68656, Start Num: 5

Candidate Starts for Battuta_96:

(Start: 5 @68336 has 78 MA's), (21, 68453), (34, 68594),

Gene: Belfort_87 Start: 63047, Stop: 63355, Start Num: 8

Candidate Starts for Belfort_87:

(Start: 8 @63047 has 28 MA's), (21, 63155), (22, 63158), (29, 63218), (33, 63260),

Gene: Beuffert_82 Start: 61773, Stop: 62084, Start Num: 8

Candidate Starts for Beuffert_82:

(Start: 8 @61773 has 28 MA's), (22, 61884), (29, 61944), (36, 62028),

Gene: BillNye_75 Start: 62332, Stop: 62643, Start Num: 8

Candidate Starts for BillNye_75:

(Start: 8 @62332 has 28 MA's), (13, 62356), (17, 62413), (27, 62482),

Gene: Birchlyn_95 Start: 66219, Stop: 66539, Start Num: 5

Candidate Starts for Birchlyn_95:

(Start: 5 @66219 has 78 MA's), (21, 66336), (34, 66477),

Gene: BlueOtter_94 Start: 68150, Stop: 68470, Start Num: 5

Candidate Starts for BlueOtter_94:

(Start: 5 @68150 has 78 MA's), (29, 68330), (34, 68408),

Gene: Blueeyedbeauty_84 Start: 61175, Stop: 61483, Start Num: 8
Candidate Starts for Blueeyedbeauty_84:
(Start: 8 @61175 has 28 MA's), (22, 61286), (31, 61361),

Gene: Bmoc_93 Start: 67477, Stop: 67797, Start Num: 5
Candidate Starts for Bmoc_93:
(Start: 5 @67477 has 78 MA's), (29, 67657), (34, 67735),

Gene: BoomerJR_98 Start: 68191, Stop: 68511, Start Num: 5
Candidate Starts for BoomerJR_98:
(Start: 5 @68191 has 78 MA's), (34, 68449),

Gene: Bordeaux_96 Start: 68491, Stop: 68811, Start Num: 5
Candidate Starts for Bordeaux_96:
(Start: 5 @68491 has 78 MA's), (21, 68608), (34, 68749),

Gene: Braelyn_95 Start: 68302, Stop: 68622, Start Num: 5
Candidate Starts for Braelyn_95:
(Start: 5 @68302 has 78 MA's), (22, 68422), (29, 68482), (34, 68560),

Gene: Brizzy_97 Start: 68010, Stop: 68330, Start Num: 5
Candidate Starts for Brizzy_97:
(Start: 5 @68010 has 78 MA's), (21, 68127), (34, 68268),

Gene: Cadmus_92 Start: 67088, Stop: 67408, Start Num: 5
Candidate Starts for Cadmus_92:
(Start: 5 @67088 has 78 MA's), (29, 67268), (34, 67346), (38, 67367),

Gene: CeilingFan_97 Start: 68251, Stop: 68571, Start Num: 5
Candidate Starts for CeilingFan_97:
(Start: 5 @68251 has 78 MA's), (21, 68368), (34, 68509),

Gene: Chaewon_79 Start: 62273, Stop: 62584, Start Num: 8
Candidate Starts for Chaewon_79:
(1, 62180), (2, 62183), (3, 62192), (Start: 8 @62273 has 28 MA's), (13, 62297), (17, 62354), (27, 62423), (34, 62525),

Gene: Circinus_76 Start: 62319, Stop: 62630, Start Num: 8
Candidate Starts for Circinus_76:
(1, 62226), (2, 62229), (3, 62238), (Start: 8 @62319 has 28 MA's), (13, 62343), (17, 62400), (27, 62469),

Gene: Comrade_85 Start: 62663, Stop: 62971, Start Num: 8
Candidate Starts for Comrade_85:
(Start: 8 @62663 has 28 MA's), (21, 62771), (22, 62774), (29, 62834), (33, 62876),

Gene: Coogler_94 Start: 68176, Stop: 68496, Start Num: 5
Candidate Starts for Coogler_94:
(Start: 5 @68176 has 78 MA's), (29, 68356), (34, 68434),

Gene: Cross_94 Start: 68151, Stop: 68471, Start Num: 5
Candidate Starts for Cross_94:

(Start: 5 @68151 has 78 MA's), (29, 68331), (34, 68409),

Gene: Cursive_92 Start: 67676, Stop: 67996, Start Num: 5

Candidate Starts for Cursive_92:

(Start: 5 @67676 has 78 MA's), (29, 67856), (34, 67934),

Gene: Daubenski_96 Start: 67852, Stop: 68172, Start Num: 5

Candidate Starts for Daubenski_96:

(Start: 5 @67852 has 78 MA's), (29, 68032), (34, 68110), (38, 68131),

Gene: Davielle_92 Start: 67722, Stop: 68042, Start Num: 5

Candidate Starts for Davielle_92:

(Start: 5 @67722 has 78 MA's), (22, 67842), (29, 67902), (34, 67980),

Gene: DeluluLabubu_85 Start: 60726, Stop: 61031, Start Num: 8

Candidate Starts for DeluluLabubu_85:

(Start: 8 @60726 has 28 MA's), (22, 60837), (26, 60861), (33, 60939),

Gene: Dorin_88 Start: 68544, Stop: 68846, Start Num: 9

Candidate Starts for Dorin_88:

(4, 68508), (Start: 9 @68544 has 2 MA's), (32, 68739),

Gene: EGole_95 Start: 69096, Stop: 69416, Start Num: 5

Candidate Starts for EGole_95:

(Start: 5 @69096 has 78 MA's), (29, 69276), (34, 69354),

Gene: Eliot67_92 Start: 67580, Stop: 67900, Start Num: 5

Candidate Starts for Eliot67_92:

(Start: 5 @67580 has 78 MA's), (22, 67700), (29, 67760), (34, 67838),

Gene: Elmer_99 Start: 68657, Stop: 68983, Start Num: 5

Candidate Starts for Elmer_99:

(Start: 5 @68657 has 78 MA's), (25, 68798), (29, 68843), (38, 68942),

Gene: Emma1919_87 Start: 61386, Stop: 61691, Start Num: 8

Candidate Starts for Emma1919_87:

(Start: 8 @61386 has 28 MA's), (22, 61497), (33, 61599),

Gene: Enygma_98 Start: 70147, Stop: 70467, Start Num: 5

Candidate Starts for Enygma_98:

(Start: 5 @70147 has 78 MA's), (16, 70219), (34, 70405),

Gene: Evy_94 Start: 68051, Stop: 68371, Start Num: 5

Candidate Starts for Evy_94:

(Start: 5 @68051 has 78 MA's), (29, 68231), (34, 68309),

Gene: Faust_85 Start: 62596, Stop: 62907, Start Num: 8

Candidate Starts for Faust_85:

(Start: 8 @62596 has 28 MA's), (22, 62707),

Gene: Forrest_88 Start: 62679, Stop: 62984, Start Num: 8

Candidate Starts for Forrest_88:

(Start: 8 @62679 has 28 MA's), (22, 62790), (33, 62892),

Gene: Francesca_88 Start: 69282, Stop: 69584, Start Num: 9
Candidate Starts for Francesca_88:
(4, 69246), (Start: 9 @69282 has 2 MA's), (32, 69477),

Gene: Francob_84 Start: 61425, Stop: 61733, Start Num: 8
Candidate Starts for Francob_84:
(Start: 8 @61425 has 28 MA's), (22, 61536), (35, 61677),

Gene: FreddyDRoo_92 Start: 67580, Stop: 67900, Start Num: 5
Candidate Starts for FreddyDRoo_92:
(Start: 5 @67580 has 78 MA's), (22, 67700), (29, 67760), (34, 67838),

Gene: Genie2_98 Start: 68305, Stop: 68625, Start Num: 5
Candidate Starts for Genie2_98:
(Start: 5 @68305 has 78 MA's), (34, 68563),

Gene: Gibbi_102 Start: 68474, Stop: 68794, Start Num: 5
Candidate Starts for Gibbi_102:
(Start: 5 @68474 has 78 MA's), (21, 68591), (34, 68732),

Gene: Gilson_86 Start: 61348, Stop: 61653, Start Num: 8
Candidate Starts for Gilson_86:
(Start: 8 @61348 has 28 MA's), (22, 61459), (33, 61561),

Gene: Grayson_112 Start: 70156, Stop: 70446, Start Num: 15
Candidate Starts for Grayson_112:
(Start: 15 @70156 has 3 MA's), (29, 70306),

Gene: HangryHippo_94 Start: 68150, Stop: 68470, Start Num: 5
Candidate Starts for HangryHippo_94:
(Start: 5 @68150 has 78 MA's), (29, 68330), (34, 68408),

Gene: IchabodCrane_95 Start: 68063, Stop: 68383, Start Num: 5
Candidate Starts for IchabodCrane_95:
(Start: 5 @68063 has 78 MA's), (21, 68180), (34, 68321),

Gene: Jada_86 Start: 61861, Stop: 62166, Start Num: 8
Candidate Starts for Jada_86:
(Start: 8 @61861 has 28 MA's), (22, 61972), (33, 62074),

Gene: Jay2Jay_98 Start: 68903, Stop: 69223, Start Num: 5
Candidate Starts for Jay2Jay_98:
(Start: 5 @68903 has 78 MA's), (29, 69083),

Gene: JimJam_98 Start: 68437, Stop: 68757, Start Num: 5
Candidate Starts for JimJam_98:
(Start: 5 @68437 has 78 MA's), (21, 68554), (34, 68695),

Gene: Jollison_97 Start: 68319, Stop: 68639, Start Num: 5
Candidate Starts for Jollison_97:
(Start: 5 @68319 has 78 MA's), (21, 68436), (34, 68577),

Gene: Karimac_97 Start: 68468, Stop: 68788, Start Num: 5

Candidate Starts for Karimac_97:

(Start: 5 @68468 has 78 MA's), (21, 68585), (34, 68726),

Gene: Karp_83 Start: 62256, Stop: 62564, Start Num: 8

Candidate Starts for Karp_83:

(Start: 8 @62256 has 28 MA's), (21, 62364), (22, 62367), (29, 62427), (33, 62469),

Gene: Kenrey_87 Start: 61562, Stop: 61867, Start Num: 8

Candidate Starts for Kenrey_87:

(Start: 8 @61562 has 28 MA's), (22, 61673), (23, 61676), (26, 61697), (33, 61775),

Gene: KentuckyRacer_98 Start: 68252, Stop: 68572, Start Num: 5

Candidate Starts for KentuckyRacer_98:

(Start: 5 @68252 has 78 MA's), (21, 68369), (34, 68510),

Gene: Larnav_94 Start: 68135, Stop: 68455, Start Num: 5

Candidate Starts for Larnav_94:

(Start: 5 @68135 has 78 MA's), (29, 68315), (34, 68393),

Gene: Leo04_95 Start: 68650, Stop: 68970, Start Num: 5

Candidate Starts for Leo04_95:

(Start: 5 @68650 has 78 MA's), (29, 68830), (34, 68908),

Gene: Liandry_93 Start: 68287, Stop: 68607, Start Num: 5

Candidate Starts for Liandry_93:

(Start: 5 @68287 has 78 MA's), (22, 68407), (29, 68467), (34, 68545),

Gene: LilMartin_92 Start: 67059, Stop: 67379, Start Num: 5

Candidate Starts for LilMartin_92:

(Start: 5 @67059 has 78 MA's), (29, 67239), (34, 67317), (38, 67338),

Gene: LilSaint_93 Start: 67312, Stop: 67632, Start Num: 5

Candidate Starts for LilSaint_93:

(Start: 5 @67312 has 78 MA's), (29, 67492), (34, 67570),

Gene: Limpid_82 Start: 61222, Stop: 61533, Start Num: 8

Candidate Starts for Limpid_82:

(Start: 8 @61222 has 28 MA's), (22, 61333), (29, 61393),

Gene: LukeCage_97 Start: 68225, Stop: 68545, Start Num: 5

Candidate Starts for LukeCage_97:

(Start: 5 @68225 has 78 MA's), (21, 68342), (23, 68348), (38, 68504),

Gene: Lululemon_93 Start: 67531, Stop: 67851, Start Num: 5

Candidate Starts for Lululemon_93:

(Start: 5 @67531 has 78 MA's), (29, 67711), (34, 67789),

Gene: Marsus_93 Start: 67308, Stop: 67628, Start Num: 5

Candidate Starts for Marsus_93:

(Start: 5 @67308 has 78 MA's), (29, 67488), (34, 67566),

Gene: Maupel_85 Start: 61348, Stop: 61653, Start Num: 8

Candidate Starts for Maupel_85:

(Start: 8 @61348 has 28 MA's), (22, 61459), (33, 61561),

Gene: MeganTheeKilla_84 Start: 60709, Stop: 61014, Start Num: 8

Candidate Starts for MeganTheeKilla_84:

(Start: 8 @60709 has 28 MA's), (22, 60820), (33, 60922),

Gene: Mildred21_93 Start: 67285, Stop: 67605, Start Num: 5

Candidate Starts for Mildred21_93:

(Start: 5 @67285 has 78 MA's), (22, 67405), (29, 67465), (34, 67543),

Gene: MindFlayer_95 Start: 67970, Stop: 68290, Start Num: 5

Candidate Starts for MindFlayer_95:

(Start: 5 @67970 has 78 MA's), (21, 68087), (34, 68228),

Gene: Moab_85 Start: 62621, Stop: 62929, Start Num: 8

Candidate Starts for Moab_85:

(Start: 8 @62621 has 28 MA's), (22, 62732),

Gene: Mugiwara_97 Start: 68724, Stop: 69044, Start Num: 5

Candidate Starts for Mugiwara_97:

(Start: 5 @68724 has 78 MA's), (21, 68841), (34, 68982),

Gene: MulchMansion_92 Start: 67059, Stop: 67379, Start Num: 5

Candidate Starts for MulchMansion_92:

(Start: 5 @67059 has 78 MA's), (29, 67239), (34, 67317), (38, 67338),

Gene: Muntaha_77 Start: 60800, Stop: 61114, Start Num: 8

Candidate Starts for Muntaha_77:

(Start: 8 @60800 has 28 MA's), (27, 60950),

Gene: Navo_92 Start: 68206, Stop: 68526, Start Num: 5

Candidate Starts for Navo_92:

(Start: 5 @68206 has 78 MA's), (22, 68326), (29, 68386), (34, 68464),

Gene: NiceHouse_101 Start: 73108, Stop: 73398, Start Num: 11

Candidate Starts for NiceHouse_101:

(Start: 11 @73108 has 1 MA's), (24, 73219), (25, 73222), (34, 73345),

Gene: NootNoot_90 Start: 67201, Stop: 67521, Start Num: 5

Candidate Starts for NootNoot_90:

(Start: 5 @67201 has 78 MA's), (22, 67321), (29, 67381), (34, 67459),

Gene: Nova53_84 Start: 68111, Stop: 68410, Start Num: 10

Candidate Starts for Nova53_84:

(Start: 10 @68111 has 1 MA's), (20, 68195), (33, 68318),

Gene: PacManQ_93 Start: 67531, Stop: 67851, Start Num: 5

Candidate Starts for PacManQ_93:

(Start: 5 @67531 has 78 MA's), (29, 67711), (34, 67789),

Gene: Paradiddles_90 Start: 67465, Stop: 67785, Start Num: 5

Candidate Starts for Paradiddles_90:

(Start: 5 @67465 has 78 MA's), (22, 67585), (29, 67645), (34, 67723),

Gene: Patelgo_85 Start: 62784, Stop: 63092, Start Num: 8

Candidate Starts for Patelgo_85:

(Start: 8 @62784 has 28 MA's), (22, 62895),

Gene: Peebs_93 Start: 67885, Stop: 68205, Start Num: 5

Candidate Starts for Peebs_93:

(Start: 5 @67885 has 78 MA's), (29, 68065), (34, 68143),

Gene: Pepperwood_94 Start: 68018, Stop: 68338, Start Num: 5

Candidate Starts for Pepperwood_94:

(Start: 5 @68018 has 78 MA's), (29, 68198), (34, 68276),

Gene: Peregrin_110 Start: 68566, Stop: 68856, Start Num: 15

Candidate Starts for Peregrin_110:

(Start: 15 @68566 has 3 MA's), (29, 68716),

Gene: Persimmon_93 Start: 67134, Stop: 67454, Start Num: 5

Candidate Starts for Persimmon_93:

(Start: 5 @67134 has 78 MA's), (22, 67254), (29, 67314), (34, 67392),

Gene: Phredrick_85 Start: 60642, Stop: 60947, Start Num: 8

Candidate Starts for Phredrick_85:

(Start: 8 @60642 has 28 MA's), (22, 60753), (23, 60756), (26, 60777), (33, 60855),

Gene: PinkiePie_93 Start: 68287, Stop: 68607, Start Num: 5

Candidate Starts for PinkiePie_93:

(Start: 5 @68287 has 78 MA's), (22, 68407), (29, 68467), (34, 68545),

Gene: PumpkinSpice_97 Start: 68362, Stop: 68682, Start Num: 5

Candidate Starts for PumpkinSpice_97:

(Start: 5 @68362 has 78 MA's), (21, 68479), (34, 68620),

Gene: Quaran19_97 Start: 68353, Stop: 68673, Start Num: 5

Candidate Starts for Quaran19_97:

(Start: 5 @68353 has 78 MA's), (21, 68470), (34, 68611),

Gene: Rikishi_97 Start: 68268, Stop: 68588, Start Num: 5

Candidate Starts for Rikishi_97:

(Start: 5 @68268 has 78 MA's), (21, 68385), (34, 68526),

Gene: Riptide_91 Start: 66856, Stop: 67176, Start Num: 5

Candidate Starts for Riptide_91:

(Start: 5 @66856 has 78 MA's), (29, 67036), (34, 67114),

Gene: SaltySpittoon_97 Start: 68362, Stop: 68682, Start Num: 5

Candidate Starts for SaltySpittoon_97:

(Start: 5 @68362 has 78 MA's), (21, 68479), (34, 68620),

Gene: Samisti12_94 Start: 69327, Stop: 69647, Start Num: 5

Candidate Starts for Samisti12_94:

(Start: 5 @69327 has 78 MA's), (29, 69507), (34, 69585),

Gene: Scheme_95 Start: 68732, Stop: 69052, Start Num: 5

Candidate Starts for Scheme_95:

(Start: 5 @68732 has 78 MA's), (29, 68912), (34, 68990),

Gene: SeresaTree_85 Start: 61986, Stop: 62297, Start Num: 8

Candidate Starts for SeresaTree_85:

(Start: 8 @61986 has 28 MA's), (22, 62097),

Gene: Sham_79 Start: 61738, Stop: 62049, Start Num: 8

Candidate Starts for Sham_79:

(Start: 8 @61738 has 28 MA's), (21, 61846), (22, 61849), (29, 61909), (35, 61990),

Gene: Shuckle_92 Start: 68340, Stop: 68660, Start Num: 5

Candidate Starts for Shuckle_92:

(Start: 5 @68340 has 78 MA's), (29, 68520), (34, 68598),

Gene: Sollertia_98 Start: 68305, Stop: 68625, Start Num: 5

Candidate Starts for Sollertia_98:

(Start: 5 @68305 has 78 MA's), (34, 68563),

Gene: SparkleGoddess_85 Start: 62664, Stop: 62972, Start Num: 8

Candidate Starts for SparkleGoddess_85:

(Start: 8 @62664 has 28 MA's), (22, 62775), (29, 62835), (33, 62877),

Gene: Spelly_98 Start: 68317, Stop: 68637, Start Num: 5

Candidate Starts for Spelly_98:

(Start: 5 @68317 has 78 MA's), (21, 68434), (34, 68575),

Gene: Spilled_99 Start: 68434, Stop: 68754, Start Num: 5

Candidate Starts for Spilled_99:

(Start: 5 @68434 has 78 MA's), (21, 68551), (34, 68692),

Gene: Squillium_94 Start: 68288, Stop: 68608, Start Num: 5

Candidate Starts for Squillium_94:

(Start: 5 @68288 has 78 MA's), (22, 68408), (29, 68468), (34, 68546),

Gene: Stanimal_98 Start: 68194, Stop: 68514, Start Num: 5

Candidate Starts for Stanimal_98:

(Start: 5 @68194 has 78 MA's), (34, 68452),

Gene: StarPlatinum_98 Start: 68870, Stop: 69190, Start Num: 5

Candidate Starts for StarPlatinum_98:

(Start: 5 @68870 has 78 MA's), (21, 68987), (23, 68993), (30, 69062), (38, 69149),

Gene: Starbow_96 Start: 68338, Stop: 68658, Start Num: 5

Candidate Starts for Starbow_96:

(Start: 5 @68338 has 78 MA's), (21, 68455), (34, 68596),

Gene: Stigma_84 Start: 62672, Stop: 62980, Start Num: 8

Candidate Starts for Stigma_84:

(Start: 8 @62672 has 28 MA's), (22, 62783), (29, 62843), (33, 62885),

Gene: Sushi23_93 Start: 68243, Stop: 68563, Start Num: 5
Candidate Starts for Sushi23_93:
(Start: 5 @68243 has 78 MA's), (29, 68423), (34, 68501),

Gene: Targaryen_94 Start: 68953, Stop: 69273, Start Num: 5
Candidate Starts for Targaryen_94:
(Start: 5 @68953 has 78 MA's), (29, 69133), (34, 69211),

Gene: Teutsch_94 Start: 68506, Stop: 68826, Start Num: 5
Candidate Starts for Teutsch_94:
(Start: 5 @68506 has 78 MA's), (29, 68686), (34, 68764),

Gene: TomSawyer_96 Start: 67953, Stop: 68273, Start Num: 5
Candidate Starts for TomSawyer_96:
(Start: 5 @67953 has 78 MA's), (21, 68070), (34, 68211),

Gene: Tomas_99 Start: 70399, Stop: 70716, Start Num: 7
Candidate Starts for Tomas_99:
(Start: 7 @70399 has 1 MA's), (16, 70468), (21, 70513), (24, 70528), (29, 70576),

Gene: Tribute_92 Start: 67712, Stop: 68032, Start Num: 5
Candidate Starts for Tribute_92:
(Start: 5 @67712 has 78 MA's), (23, 67835), (29, 67892), (34, 67970),

Gene: Trina_114 Start: 76291, Stop: 76587, Start Num: 12
Candidate Starts for Trina_114:
(6, 76261), (Start: 12 @76291 has 1 MA's), (14, 76294), (18, 76357), (19, 76360), (28, 76447),

Gene: TunaTartare_84 Start: 63152, Stop: 63463, Start Num: 8
Candidate Starts for TunaTartare_84:
(Start: 8 @63152 has 28 MA's), (22, 63263), (35, 63404),

Gene: Wakanda_76 Start: 60737, Stop: 61051, Start Num: 8
Candidate Starts for Wakanda_76:
(Start: 8 @60737 has 28 MA's), (27, 60887),

Gene: Warpy_97 Start: 68416, Stop: 68736, Start Num: 5
Candidate Starts for Warpy_97:
(Start: 5 @68416 has 78 MA's), (29, 68596), (34, 68674),

Gene: Watermoore_93 Start: 68722, Stop: 69042, Start Num: 5
Candidate Starts for Watermoore_93:
(Start: 5 @68722 has 78 MA's), (29, 68902), (34, 68980),

Gene: Weasels2_112 Start: 69578, Stop: 69868, Start Num: 15
Candidate Starts for Weasels2_112:
(Start: 15 @69578 has 3 MA's), (25, 69683), (29, 69728), (37, 69824),

Gene: Westy_86 Start: 62664, Stop: 62972, Start Num: 8
Candidate Starts for Westy_86:
(Start: 8 @62664 has 28 MA's), (21, 62772), (22, 62775), (29, 62835), (33, 62877),

Gene: WhereRU_91 Start: 67722, Stop: 68042, Start Num: 5

Candidate Starts for WhereRU_91:

(Start: 5 @67722 has 78 MA's), (22, 67842), (29, 67902), (34, 67980),

Gene: Wipeout_95 Start: 68704, Stop: 69024, Start Num: 5

Candidate Starts for Wipeout_95:

(Start: 5 @68704 has 78 MA's), (21, 68821), (34, 68962),

Gene: Wofford_96 Start: 68620, Stop: 68946, Start Num: 5

Candidate Starts for Wofford_96:

(Start: 5 @68620 has 78 MA's), (17, 68710), (25, 68761), (29, 68806), (38, 68905),

Gene: Yaboi_98 Start: 68282, Stop: 68602, Start Num: 5

Candidate Starts for Yaboi_98:

(Start: 5 @68282 has 78 MA's), (34, 68540),