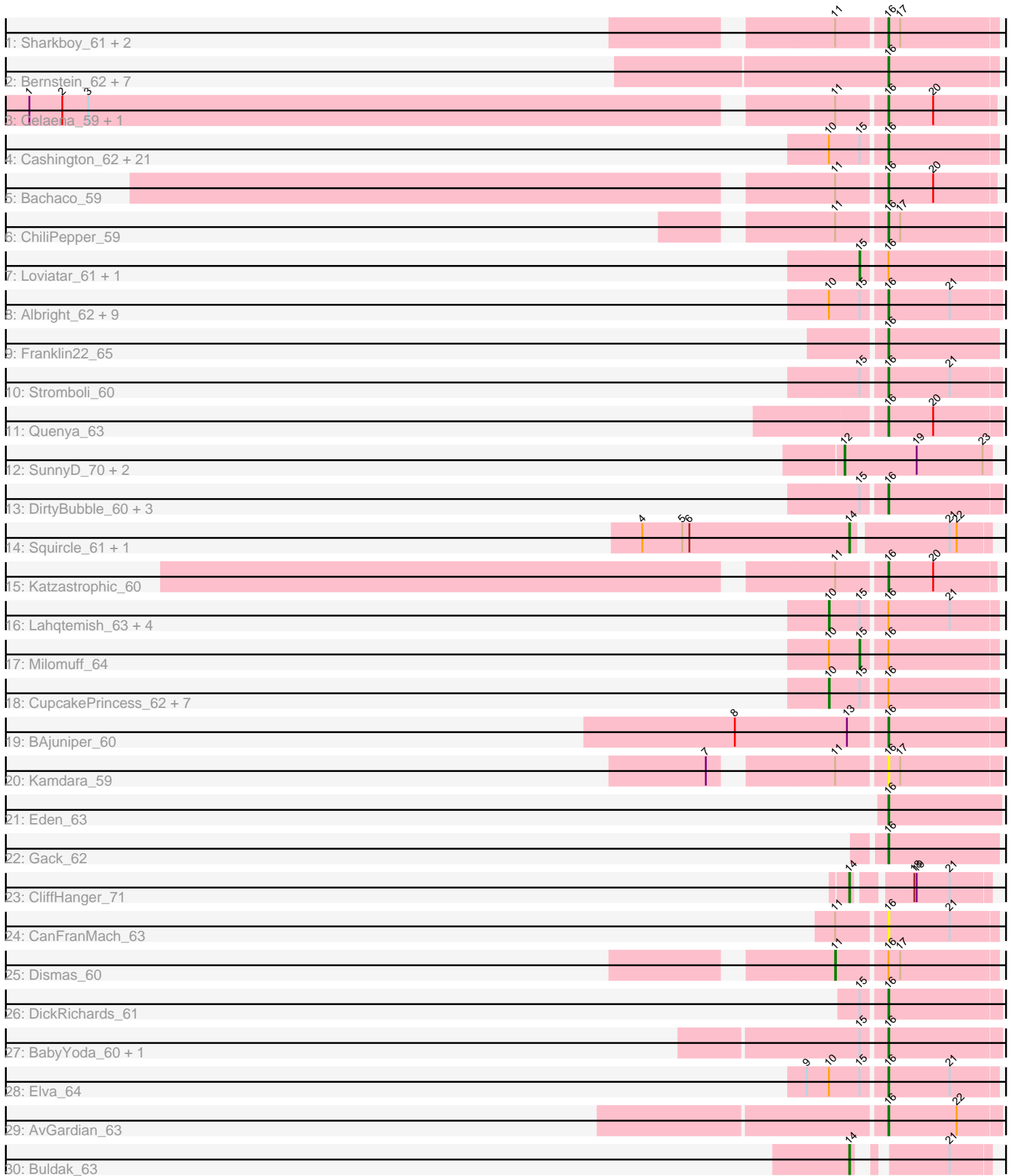


Pham 292712



Note: Tracks are now grouped by subcluster and scaled. Switching in subcluster is indicated by changes in track color. Track scale is now set by default to display the region 30 bp upstream of start 1 to 30 bp downstream of the last possible start. If this default region is judged to be packed too tightly with annotated starts, the track will be further scaled to only show that region of the ORF with annotated starts. This action will be indicated by adding "Zoomed" to the title. For starts, yellow indicates the location of called starts comprised solely of Glimmer/GeneMark auto-annotations, green indicates the location of called starts with at least 1 manual gene annotation.

Pham 292712 Report

This analysis was run 04/18/26 on database version 643.

Pham number 292712 has 89 members, 9 are drafts.

Phages represented in each track:

- Track 1 : Sharkboy_61, Rona_59, Kieran_59
- Track 2 : Bernstein_62, Skylord_62, Brahms_62, Armstrong_62, Vitas_62, Clayda5_64, Coltrane_62, Rollins_62
- Track 3 : Celaena_59, FlameThrower_58
- Track 4 : Cashington_62, Jabb_62, Finalfrontier_63, BelmontSKP_62, CroZenni_63, MsUbiquitous_62, Eula_62, TukTuk_64, Lilo27_64, Solea_65, Pecas_63, Jovita_61, Kenzers_62, QMacho_64, Johnathan_62, Avocadoman_62, SarBear_63, Swervy_63, AylexOG_64, Doobus_61, Slay_64, Lynlen_63
- Track 5 : Bachaco_59
- Track 6 : ChiliPepper_59
- Track 7 : Loviatar_61, Akino08_61
- Track 8 : Albright_62, BubbaBear_62, Albedo_64, Softsoap_64, PhigPhack_65, Didgeridoo_68, IndyLu_65, SirBeanington_63, Phisb_64, Abigail_62
- Track 9 : Franklin22_65
- Track 10 : Stromboli_60
- Track 11 : Quenya_63
- Track 12 : SunnyD_70, Teagster_70, Shayna_70
- Track 13 : DirtyBubble_60, SanaSana_62, Icarian_63, Stoor_60
- Track 14 : Squircle_61, Olliecat_61
- Track 15 : Katzastrophic_60
- Track 16 : Lahqtemish_63, BabyDaisy_65, Kate33_67, PastaFagioli_64, SansAfet_64
- Track 17 : Milomuff_64
- Track 18 : CupcakePrincess_62, Nicky22_62, LimaBean_62, AnnaLie_62, Bengal_65, Arroyo_63, PondAmelia_75, Burritobowl_64
- Track 19 : BAjuniper_60
- Track 20 : Kamdara_59
- Track 21 : Eden_63
- Track 22 : Gack_62
- Track 23 : CliffHanger_71
- Track 24 : CanFranMach_63
- Track 25 : Dismas_60
- Track 26 : DickRichards_61
- Track 27 : BabyYoda_60, WalkingDead_63
- Track 28 : Elva_64
- Track 29 : AvGardian_63
- Track 30 : Buldak_63

Summary of Final Annotations (See graph section above for start numbers):

The start number called the most often in the published annotations is 16, it was called in 57 of the 80 non-draft genes in the pham.

Genes that call this "Most Annotated" start:

- Abigail_62, Albedo_64, Albright_62, Armstrong_62, AvGardian_63, Avocadoman_62, AylexOG_64, BAjuniper_60, BabyYoda_60, Bachaco_59, BelmontSKP_62, Bernstein_62, Brahms_62, BubbaBear_62, CanFranMach_63, Cashington_62, Celaena_59, ChiliPepper_59, Clayda5_64, Coltrane_62, CroZenni_63, DickRichards_61, Didgeridoo_68, DirtyBubble_60, Doobus_61, Eden_63, Elva_64, Eula_62, Finalfrontier_63, FlameThrower_58, Franklin22_65, Gack_62, Icarian_63, IndyLu_65, Jabb_62, Johnathan_62, Jovita_61, Kamdara_59, Katzastrophic_60, Kenzers_62, Kieran_59, Lilo27_64, Lynlen_63, MsUbiquitous_62, Pecas_63, PhigPhack_65, Phisb_64, QMacho_64, Quenya_63, Rollins_62, Rona_59, SanaSana_62, SarBear_63, Sharkboy_61, SirBeanington_63, Skylord_62, Slay_64, Softsoap_64, Solea_65, Stoor_60, Stromboli_60, Swervy_63, TukTuk_64, Vitas_62, WalkingDead_63,

Genes that have the "Most Annotated" start but do not call it:

- Akino08_61, AnnaLie_62, Arroyo_63, BabyDaisy_65, Bengal_65, Burritobowl_64, CupcakePrincess_62, Dismas_60, Kate33_67, Lahqtemish_63, LimaBean_62, Loviatar_61, Milomuff_64, Nicky22_62, PastaFagioli_64, PondAmelia_75, SansAfet_64,

Genes that do not have the "Most Annotated" start:

- Buldak_63, CliffHanger_71, Olliecat_61, Shayna_70, Squiracle_61, SunnyD_70, Teagster_70,

Summary by start number:

Start 10:

- Found in 47 of 89 (52.8%) of genes in pham
- Manual Annotations of this start: 12 of 80
- Called 27.7% of time when present
- Phage (with cluster) where this start called: AnnaLie_62 (EB), Arroyo_63 (EB), BabyDaisy_65 (EB), Bengal_65 (EB), Burritobowl_64 (EB), CupcakePrincess_62 (EB), Kate33_67 (EB), Lahqtemish_63 (EB), LimaBean_62 (EB), Nicky22_62 (EB), PastaFagioli_64 (EB), PondAmelia_75 (EB), SansAfet_64 (EB),

Start 11:

- Found in 11 of 89 (12.4%) of genes in pham
- Manual Annotations of this start: 1 of 80
- Called 9.1% of time when present
- Phage (with cluster) where this start called: Dismas_60 (EB),

Start 12:

- Found in 3 of 89 (3.4%) of genes in pham
- Manual Annotations of this start: 3 of 80

- Called 100.0% of time when present
- Phage (with cluster) where this start called: Shayna_70 (EB), SunnyD_70 (EB), Teagster_70 (EB),

Start 14:

- Found in 4 of 89 (4.5%) of genes in pham
- Manual Annotations of this start: 4 of 80
- Called 100.0% of time when present
- Phage (with cluster) where this start called: Buldak_63 (EB), CliffHanger_71 (EB), Olliecat_61 (EB), Squirrel_61 (EB),

Start 15:

- Found in 57 of 89 (64.0%) of genes in pham
- Manual Annotations of this start: 3 of 80
- Called 5.3% of time when present
- Phage (with cluster) where this start called: Akino08_61 (EB), Loviatar_61 (EB), Milomuff_64 (EB),

Start 16:

- Found in 82 of 89 (92.1%) of genes in pham
- Manual Annotations of this start: 57 of 80
- Called 79.3% of time when present
- Phage (with cluster) where this start called: Abigail_62 (EB), Albedo_64 (EB), Albright_62 (EB), Armstrong_62 (EB), AvGardian_63 (EB), Avocadoman_62 (EB), AylexOG_64 (EB), BAjuniper_60 (EB), BabyYoda_60 (EB), Bachaco_59 (EB), BelmontSKP_62 (EB), Bernstein_62 (EB), Brahms_62 (EB), BubbaBear_62 (EB), CanFranMach_63 (EB), Cashington_62 (EB), Celaena_59 (EB), ChiliPepper_59 (EB), Clayda5_64 (EB), Coltrane_62 (EB), CroZenni_63 (EB), DickRichards_61 (EB), Didgeridoo_68 (EB), DirtyBubble_60 (EB), Doobus_61 (EB), Eden_63 (EB), Elva_64 (EB), Eula_62 (EB), Finalfrontier_63 (EB), FlameThrower_58 (EB), Franklin22_65 (EB), Gack_62 (EB), Icarian_63 (EB), IndyLu_65 (EB), Jabb_62 (EB), Johnathan_62 (EB), Jovita_61 (EB), Kamdara_59 (EB), Katzastrophic_60 (EB), Kenzers_62 (EB), Kieran_59 (EB), Lilo27_64 (EB), Lynlen_63 (EB), MsUbiquitous_62 (EB), Pecas_63 (EB), PhigPhack_65 (EB), Phisb_64 (EB), QMacho_64 (EB), Quenya_63 (EB), Rollins_62 (EB), Rona_59 (EB), SanaSana_62 (EB), SarBear_63 (EB), Sharkboy_61 (EB), SirBeanington_63 (EB), Skylord_62 (EB), Slay_64 (EB), Softsoap_64 (EB), Solea_65 (EB), Stoor_60 (EB), Stromboli_60 (EB), Swervy_63 (EB), TukTuk_64 (EB), Vitas_62 (EB), WalkingDead_63 (EB),

Summary by clusters:

There is one cluster represented in this pham: EB

Info for manual annotations of cluster EB:

- Start number 10 was manually annotated 12 times for cluster EB.
- Start number 11 was manually annotated 1 time for cluster EB.
- Start number 12 was manually annotated 3 times for cluster EB.
- Start number 14 was manually annotated 4 times for cluster EB.
- Start number 15 was manually annotated 3 times for cluster EB.
- Start number 16 was manually annotated 57 times for cluster EB.

Gene Information:

Gene: Abigail_62 Start: 38976, Stop: 39116, Start Num: 16

Candidate Starts for Abigail_62:

(Start: 10 @38910 has 12 MA's), (Start: 15 @38949 has 3 MA's), (Start: 16 @38976 has 57 MA's), (21, 39054),

Gene: Akino08_61 Start: 40409, Stop: 40576, Start Num: 15

Candidate Starts for Akino08_61:

(Start: 15 @40409 has 3 MA's), (Start: 16 @40436 has 57 MA's),

Gene: Albedo_64 Start: 39896, Stop: 40036, Start Num: 16

Candidate Starts for Albedo_64:

(Start: 10 @39830 has 12 MA's), (Start: 15 @39869 has 3 MA's), (Start: 16 @39896 has 57 MA's), (21, 39974),

Gene: Albright_62 Start: 38958, Stop: 39098, Start Num: 16

Candidate Starts for Albright_62:

(Start: 10 @38892 has 12 MA's), (Start: 15 @38931 has 3 MA's), (Start: 16 @38958 has 57 MA's), (21, 39036),

Gene: AnnaLie_62 Start: 39565, Stop: 39771, Start Num: 10

Candidate Starts for AnnaLie_62:

(Start: 10 @39565 has 12 MA's), (Start: 15 @39604 has 3 MA's), (Start: 16 @39631 has 57 MA's),

Gene: Armstrong_62 Start: 37649, Stop: 37786, Start Num: 16

Candidate Starts for Armstrong_62:

(Start: 16 @37649 has 57 MA's),

Gene: Arroyo_63 Start: 39867, Stop: 40070, Start Num: 10

Candidate Starts for Arroyo_63:

(Start: 10 @39867 has 12 MA's), (Start: 15 @39906 has 3 MA's), (Start: 16 @39933 has 57 MA's),

Gene: AvGardian_63 Start: 39698, Stop: 39838, Start Num: 16

Candidate Starts for AvGardian_63:

(Start: 16 @39698 has 57 MA's), (22, 39785),

Gene: Avocadoman_62 Start: 38904, Stop: 39041, Start Num: 16

Candidate Starts for Avocadoman_62:

(Start: 10 @38838 has 12 MA's), (Start: 15 @38877 has 3 MA's), (Start: 16 @38904 has 57 MA's),

Gene: AylexOG_64 Start: 39542, Stop: 39679, Start Num: 16

Candidate Starts for AylexOG_64:

(Start: 10 @39476 has 12 MA's), (Start: 15 @39515 has 3 MA's), (Start: 16 @39542 has 57 MA's),

Gene: BAjuniper_60 Start: 39708, Stop: 39854, Start Num: 16

Candidate Starts for BAjuniper_60:

(8, 39525), (13, 39663), (Start: 16 @39708 has 57 MA's),

Gene: BabyDaisy_65 Start: 40375, Stop: 40581, Start Num: 10

Candidate Starts for BabyDaisy_65:

(Start: 10 @40375 has 12 MA's), (Start: 15 @40414 has 3 MA's), (Start: 16 @40441 has 57 MA's), (21, 40519),

Gene: BabyYoda_60 Start: 39344, Stop: 39484, Start Num: 16

Candidate Starts for BabyYoda_60:

(Start: 15 @39317 has 3 MA's), (Start: 16 @39344 has 57 MA's),

Gene: Bachaco_59 Start: 40387, Stop: 40521, Start Num: 16

Candidate Starts for Bachaco_59:

(Start: 11 @40327 has 1 MA's), (Start: 16 @40387 has 57 MA's), (20, 40444),

Gene: BelmontSKP_62 Start: 39631, Stop: 39771, Start Num: 16

Candidate Starts for BelmontSKP_62:

(Start: 10 @39565 has 12 MA's), (Start: 15 @39604 has 3 MA's), (Start: 16 @39631 has 57 MA's),

Gene: Bengal_65 Start: 39625, Stop: 39828, Start Num: 10

Candidate Starts for Bengal_65:

(Start: 10 @39625 has 12 MA's), (Start: 15 @39664 has 3 MA's), (Start: 16 @39691 has 57 MA's),

Gene: Bernstein_62 Start: 37647, Stop: 37784, Start Num: 16

Candidate Starts for Bernstein_62:

(Start: 16 @37647 has 57 MA's),

Gene: Brahms_62 Start: 37549, Stop: 37686, Start Num: 16

Candidate Starts for Brahms_62:

(Start: 16 @37549 has 57 MA's),

Gene: BubbaBear_62 Start: 39688, Stop: 39825, Start Num: 16

Candidate Starts for BubbaBear_62:

(Start: 10 @39622 has 12 MA's), (Start: 15 @39661 has 3 MA's), (Start: 16 @39688 has 57 MA's), (21, 39766),

Gene: Buldak_63 Start: 37507, Stop: 37647, Start Num: 14

Candidate Starts for Buldak_63:

(Start: 14 @37507 has 4 MA's), (21, 37597),

Gene: Burritobowl_64 Start: 39393, Stop: 39599, Start Num: 10

Candidate Starts for Burritobowl_64:

(Start: 10 @39393 has 12 MA's), (Start: 15 @39432 has 3 MA's), (Start: 16 @39459 has 57 MA's),

Gene: CanFranMach_63 Start: 39336, Stop: 39473, Start Num: 16

Candidate Starts for CanFranMach_63:

(Start: 11 @39279 has 1 MA's), (Start: 16 @39336 has 57 MA's), (21, 39414),

Gene: Cashington_62 Start: 39035, Stop: 39172, Start Num: 16

Candidate Starts for Cashington_62:

(Start: 10 @38969 has 12 MA's), (Start: 15 @39008 has 3 MA's), (Start: 16 @39035 has 57 MA's),

Gene: Celaena_59 Start: 40149, Stop: 40283, Start Num: 16

Candidate Starts for Celaena_59:

(1, 39096), (2, 39138), (3, 39171), (Start: 11 @40089 has 1 MA's), (Start: 16 @40149 has 57 MA's), (20, 40206),

Gene: ChiliPepper_59 Start: 39702, Stop: 39842, Start Num: 16

Candidate Starts for ChiliPepper_59:

(Start: 11 @39642 has 1 MA's), (Start: 16 @39702 has 57 MA's), (17, 39717),

Gene: Clayda5_64 Start: 37614, Stop: 37751, Start Num: 16

Candidate Starts for Clayda5_64:

(Start: 16 @37614 has 57 MA's),

Gene: CliffHanger_71 Start: 39059, Stop: 39217, Start Num: 14

Candidate Starts for CliffHanger_71:

(Start: 14 @39059 has 4 MA's), (18, 39122), (19, 39125), (21, 39167),

Gene: Coltrane_62 Start: 37549, Stop: 37686, Start Num: 16

Candidate Starts for Coltrane_62:

(Start: 16 @37549 has 57 MA's),

Gene: CroZenni_63 Start: 39258, Stop: 39395, Start Num: 16

Candidate Starts for CroZenni_63:

(Start: 10 @39192 has 12 MA's), (Start: 15 @39231 has 3 MA's), (Start: 16 @39258 has 57 MA's),

Gene: CupcakePrincess_62 Start: 38947, Stop: 39150, Start Num: 10

Candidate Starts for CupcakePrincess_62:

(Start: 10 @38947 has 12 MA's), (Start: 15 @38986 has 3 MA's), (Start: 16 @39013 has 57 MA's),

Gene: DickRichards_61 Start: 39415, Stop: 39555, Start Num: 16

Candidate Starts for DickRichards_61:

(Start: 15 @39388 has 3 MA's), (Start: 16 @39415 has 57 MA's),

Gene: Didgeridoo_68 Start: 40551, Stop: 40691, Start Num: 16

Candidate Starts for Didgeridoo_68:

(Start: 10 @40485 has 12 MA's), (Start: 15 @40524 has 3 MA's), (Start: 16 @40551 has 57 MA's), (21, 40629),

Gene: DirtyBubble_60 Start: 39383, Stop: 39523, Start Num: 16

Candidate Starts for DirtyBubble_60:

(Start: 15 @39356 has 3 MA's), (Start: 16 @39383 has 57 MA's),

Gene: Dismas_60 Start: 39563, Stop: 39760, Start Num: 11

Candidate Starts for Dismas_60:

(Start: 11 @39563 has 1 MA's), (Start: 16 @39623 has 57 MA's), (17, 39638),

Gene: Doobus_61 Start: 39090, Stop: 39227, Start Num: 16

Candidate Starts for Doobus_61:

(Start: 10 @39024 has 12 MA's), (Start: 15 @39063 has 3 MA's), (Start: 16 @39090 has 57 MA's),

Gene: Eden_63 Start: 38448, Stop: 38591, Start Num: 16

Candidate Starts for Eden_63:

(Start: 16 @38448 has 57 MA's),

Gene: Elva_64 Start: 40115, Stop: 40252, Start Num: 16

Candidate Starts for Elva_64:

(9, 40022), (Start: 10 @40049 has 12 MA's), (Start: 15 @40088 has 3 MA's), (Start: 16 @40115 has 57 MA's), (21, 40193),

Gene: Eula_62 Start: 38999, Stop: 39136, Start Num: 16

Candidate Starts for Eula_62:

(Start: 10 @38933 has 12 MA's), (Start: 15 @38972 has 3 MA's), (Start: 16 @38999 has 57 MA's),

Gene: Finalfrontier_63 Start: 40163, Stop: 40303, Start Num: 16

Candidate Starts for Finalfrontier_63:

(Start: 10 @40097 has 12 MA's), (Start: 15 @40136 has 3 MA's), (Start: 16 @40163 has 57 MA's),

Gene: FlameThrower_58 Start: 39186, Stop: 39320, Start Num: 16

Candidate Starts for FlameThrower_58:

(1, 38133), (2, 38175), (3, 38208), (Start: 11 @39126 has 1 MA's), (Start: 16 @39186 has 57 MA's),
(20, 39243),

Gene: Franklin22_65 Start: 38170, Stop: 38310, Start Num: 16

Candidate Starts for Franklin22_65:

(Start: 16 @38170 has 57 MA's),

Gene: Gack_62 Start: 38076, Stop: 38216, Start Num: 16

Candidate Starts for Gack_62:

(Start: 16 @38076 has 57 MA's),

Gene: Icarian_63 Start: 40033, Stop: 40173, Start Num: 16

Candidate Starts for Icarian_63:

(Start: 15 @40006 has 3 MA's), (Start: 16 @40033 has 57 MA's),

Gene: IndyLu_65 Start: 40172, Stop: 40312, Start Num: 16

Candidate Starts for IndyLu_65:

(Start: 10 @40106 has 12 MA's), (Start: 15 @40145 has 3 MA's), (Start: 16 @40172 has 57 MA's), (21,
40250),

Gene: Jabb_62 Start: 39013, Stop: 39150, Start Num: 16

Candidate Starts for Jabb_62:

(Start: 10 @38947 has 12 MA's), (Start: 15 @38986 has 3 MA's), (Start: 16 @39013 has 57 MA's),

Gene: Johnathan_62 Start: 38959, Stop: 39099, Start Num: 16

Candidate Starts for Johnathan_62:

(Start: 10 @38893 has 12 MA's), (Start: 15 @38932 has 3 MA's), (Start: 16 @38959 has 57 MA's),

Gene: Jovita_61 Start: 38770, Stop: 38907, Start Num: 16

Candidate Starts for Jovita_61:

(Start: 10 @38704 has 12 MA's), (Start: 15 @38743 has 3 MA's), (Start: 16 @38770 has 57 MA's),

Gene: Kamdara_59 Start: 39661, Stop: 39801, Start Num: 16

Candidate Starts for Kamdara_59:

(7, 39472), (Start: 11 @39601 has 1 MA's), (Start: 16 @39661 has 57 MA's), (17, 39676),

Gene: Kate33_67 Start: 39842, Stop: 40048, Start Num: 10

Candidate Starts for Kate33_67:

(Start: 10 @39842 has 12 MA's), (Start: 15 @39881 has 3 MA's), (Start: 16 @39908 has 57 MA's), (21,
39986),

Gene: Katzastrophic_60 Start: 39696, Stop: 39830, Start Num: 16

Candidate Starts for Katzastrophic_60:

(Start: 11 @39636 has 1 MA's), (Start: 16 @39696 has 57 MA's), (20, 39753),

Gene: Kenzers_62 Start: 38829, Stop: 38966, Start Num: 16
Candidate Starts for Kenzers_62:
(Start: 10 @38763 has 12 MA's), (Start: 15 @38802 has 3 MA's), (Start: 16 @38829 has 57 MA's),

Gene: Kieran_59 Start: 39664, Stop: 39804, Start Num: 16
Candidate Starts for Kieran_59:
(Start: 11 @39604 has 1 MA's), (Start: 16 @39664 has 57 MA's), (17, 39679),

Gene: Lahqtemish_63 Start: 40119, Stop: 40322, Start Num: 10
Candidate Starts for Lahqtemish_63:
(Start: 10 @40119 has 12 MA's), (Start: 15 @40158 has 3 MA's), (Start: 16 @40185 has 57 MA's), (21, 40263),

Gene: Lilo27_64 Start: 39440, Stop: 39577, Start Num: 16
Candidate Starts for Lilo27_64:
(Start: 10 @39374 has 12 MA's), (Start: 15 @39413 has 3 MA's), (Start: 16 @39440 has 57 MA's),

Gene: LimaBean_62 Start: 38787, Stop: 38993, Start Num: 10
Candidate Starts for LimaBean_62:
(Start: 10 @38787 has 12 MA's), (Start: 15 @38826 has 3 MA's), (Start: 16 @38853 has 57 MA's),

Gene: Loviatar_61 Start: 40424, Stop: 40591, Start Num: 15
Candidate Starts for Loviatar_61:
(Start: 15 @40424 has 3 MA's), (Start: 16 @40451 has 57 MA's),

Gene: Lynlen_63 Start: 39012, Stop: 39149, Start Num: 16
Candidate Starts for Lynlen_63:
(Start: 10 @38946 has 12 MA's), (Start: 15 @38985 has 3 MA's), (Start: 16 @39012 has 57 MA's),

Gene: Milomuff_64 Start: 39521, Stop: 39685, Start Num: 15
Candidate Starts for Milomuff_64:
(Start: 10 @39482 has 12 MA's), (Start: 15 @39521 has 3 MA's), (Start: 16 @39548 has 57 MA's),

Gene: MsUbiquitous_62 Start: 39013, Stop: 39150, Start Num: 16
Candidate Starts for MsUbiquitous_62:
(Start: 10 @38947 has 12 MA's), (Start: 15 @38986 has 3 MA's), (Start: 16 @39013 has 57 MA's),

Gene: Nicky22_62 Start: 39355, Stop: 39558, Start Num: 10
Candidate Starts for Nicky22_62:
(Start: 10 @39355 has 12 MA's), (Start: 15 @39394 has 3 MA's), (Start: 16 @39421 has 57 MA's),

Gene: Olliecat_61 Start: 37393, Stop: 37557, Start Num: 14
Candidate Starts for Olliecat_61:
(4, 37129), (5, 37180), (6, 37189), (Start: 14 @37393 has 4 MA's), (21, 37507), (22, 37516),

Gene: PastaFagioli_64 Start: 40065, Stop: 40271, Start Num: 10
Candidate Starts for PastaFagioli_64:
(Start: 10 @40065 has 12 MA's), (Start: 15 @40104 has 3 MA's), (Start: 16 @40131 has 57 MA's), (21, 40209),

Gene: Pecas_63 Start: 39282, Stop: 39419, Start Num: 16
Candidate Starts for Pecas_63:

(Start: 10 @39216 has 12 MA's), (Start: 15 @39255 has 3 MA's), (Start: 16 @39282 has 57 MA's),

Gene: PhigPhack_65 Start: 39555, Stop: 39695, Start Num: 16

Candidate Starts for PhigPhack_65:

(Start: 10 @39489 has 12 MA's), (Start: 15 @39528 has 3 MA's), (Start: 16 @39555 has 57 MA's), (21, 39633),

Gene: Phisb_64 Start: 39528, Stop: 39668, Start Num: 16

Candidate Starts for Phisb_64:

(Start: 10 @39462 has 12 MA's), (Start: 15 @39501 has 3 MA's), (Start: 16 @39528 has 57 MA's), (21, 39606),

Gene: PondAmelia_75 Start: 39344, Stop: 39550, Start Num: 10

Candidate Starts for PondAmelia_75:

(Start: 10 @39344 has 12 MA's), (Start: 15 @39383 has 3 MA's), (Start: 16 @39410 has 57 MA's),

Gene: QMacho_64 Start: 39659, Stop: 39799, Start Num: 16

Candidate Starts for QMacho_64:

(Start: 10 @39593 has 12 MA's), (Start: 15 @39632 has 3 MA's), (Start: 16 @39659 has 57 MA's),

Gene: Quenya_63 Start: 40087, Stop: 40227, Start Num: 16

Candidate Starts for Quenya_63:

(Start: 16 @40087 has 57 MA's), (20, 40144),

Gene: Rollins_62 Start: 37647, Stop: 37784, Start Num: 16

Candidate Starts for Rollins_62:

(Start: 16 @37647 has 57 MA's),

Gene: Rona_59 Start: 39614, Stop: 39751, Start Num: 16

Candidate Starts for Rona_59:

(Start: 11 @39554 has 1 MA's), (Start: 16 @39614 has 57 MA's), (17, 39629),

Gene: SanaSana_62 Start: 39794, Stop: 39934, Start Num: 16

Candidate Starts for SanaSana_62:

(Start: 15 @39767 has 3 MA's), (Start: 16 @39794 has 57 MA's),

Gene: SansAfet_64 Start: 39438, Stop: 39644, Start Num: 10

Candidate Starts for SansAfet_64:

(Start: 10 @39438 has 12 MA's), (Start: 15 @39477 has 3 MA's), (Start: 16 @39504 has 57 MA's), (21, 39582),

Gene: SarBear_63 Start: 39068, Stop: 39205, Start Num: 16

Candidate Starts for SarBear_63:

(Start: 10 @39002 has 12 MA's), (Start: 15 @39041 has 3 MA's), (Start: 16 @39068 has 57 MA's),

Gene: Sharkboy_61 Start: 39988, Stop: 40125, Start Num: 16

Candidate Starts for Sharkboy_61:

(Start: 11 @39928 has 1 MA's), (Start: 16 @39988 has 57 MA's), (17, 40003),

Gene: Shayna_70 Start: 39636, Stop: 39821, Start Num: 12

Candidate Starts for Shayna_70:

(Start: 12 @39636 has 3 MA's), (19, 39726), (23, 39810),

Gene: SirBeanington_63 Start: 39763, Stop: 39903, Start Num: 16
Candidate Starts for SirBeanington_63:
(Start: 10 @39697 has 12 MA's), (Start: 15 @39736 has 3 MA's), (Start: 16 @39763 has 57 MA's), (21, 39841),

Gene: Skylord_62 Start: 37564, Stop: 37701, Start Num: 16
Candidate Starts for Skylord_62:
(Start: 16 @37564 has 57 MA's),

Gene: Slay_64 Start: 40038, Stop: 40178, Start Num: 16
Candidate Starts for Slay_64:
(Start: 10 @39972 has 12 MA's), (Start: 15 @40011 has 3 MA's), (Start: 16 @40038 has 57 MA's),

Gene: Softsoap_64 Start: 39727, Stop: 39867, Start Num: 16
Candidate Starts for Softsoap_64:
(Start: 10 @39661 has 12 MA's), (Start: 15 @39700 has 3 MA's), (Start: 16 @39727 has 57 MA's), (21, 39805),

Gene: Solea_65 Start: 39547, Stop: 39684, Start Num: 16
Candidate Starts for Solea_65:
(Start: 10 @39481 has 12 MA's), (Start: 15 @39520 has 3 MA's), (Start: 16 @39547 has 57 MA's),

Gene: Squircle_61 Start: 37392, Stop: 37556, Start Num: 14
Candidate Starts for Squircle_61:
(4, 37128), (5, 37179), (6, 37188), (Start: 14 @37392 has 4 MA's), (21, 37506), (22, 37515),

Gene: Stoor_60 Start: 39581, Stop: 39721, Start Num: 16
Candidate Starts for Stoor_60:
(Start: 15 @39554 has 3 MA's), (Start: 16 @39581 has 57 MA's),

Gene: Stromboli_60 Start: 39382, Stop: 39522, Start Num: 16
Candidate Starts for Stromboli_60:
(Start: 15 @39355 has 3 MA's), (Start: 16 @39382 has 57 MA's), (21, 39460),

Gene: SunnyD_70 Start: 39636, Stop: 39821, Start Num: 12
Candidate Starts for SunnyD_70:
(Start: 12 @39636 has 3 MA's), (19, 39726), (23, 39810),

Gene: Swervy_63 Start: 39132, Stop: 39269, Start Num: 16
Candidate Starts for Swervy_63:
(Start: 10 @39066 has 12 MA's), (Start: 15 @39105 has 3 MA's), (Start: 16 @39132 has 57 MA's),

Gene: Teagster_70 Start: 40081, Stop: 40239, Start Num: 12
Candidate Starts for Teagster_70:
(Start: 12 @40081 has 3 MA's), (19, 40144), (23, 40228),

Gene: TukTuk_64 Start: 39577, Stop: 39714, Start Num: 16
Candidate Starts for TukTuk_64:
(Start: 10 @39511 has 12 MA's), (Start: 15 @39550 has 3 MA's), (Start: 16 @39577 has 57 MA's),

Gene: Vitas_62 Start: 37620, Stop: 37757, Start Num: 16
Candidate Starts for Vitas_62:
(Start: 16 @37620 has 57 MA's),

Gene: WalkingDead_63 Start: 40560, Stop: 40700, Start Num: 16
Candidate Starts for WalkingDead_63:
(Start: 15 @40533 has 3 MA's), (Start: 16 @40560 has 57 MA's),