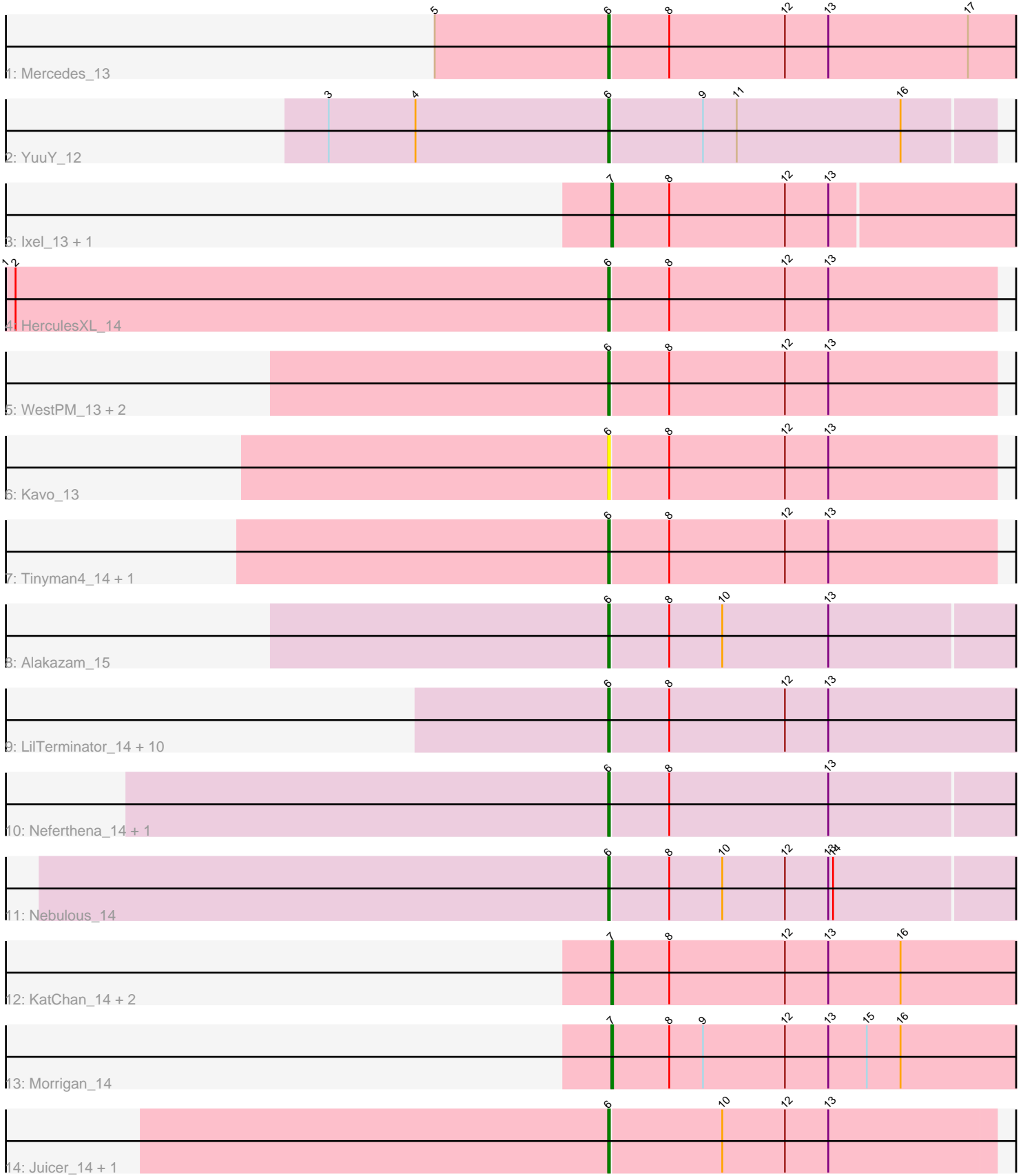


Pham 292762



Note: Tracks are now grouped by subcluster and scaled. Switching in subcluster is indicated by changes in track color. Track scale is now set by default to display the region 30 bp upstream of start 1 to 30 bp downstream of the last possible start. If this default region is judged to be packed too tightly with annotated starts, the track will be further scaled to only show that region of the ORF with annotated starts. This action will be indicated by adding "Zoomed" to the title. For starts, yellow indicates the location of called starts comprised solely of Glimmer/GeneMark auto-annotations, green indicates the location of called starts with at least 1 manual gene annotation.

Pham 292762 Report

This analysis was run 04/18/26 on database version 643.

Pham number 292762 has 32 members, 5 are drafts.

Phages represented in each track:

- Track 1 : Mercedes_13
- Track 2 : YuuY_12
- Track 3 : Ixel_13, TwoBits_14
- Track 4 : HerculesXL_14
- Track 5 : WestPM_13, Penta_13, Schimmels22_14
- Track 6 : Kavo_13
- Track 7 : Tinyman4_14, Scissor2024_14
- Track 8 : Alakazam_15
- Track 9 : LilTerminator_14, Zepp_15, BaronJohn_14, Fulton_14, Librie_14, QuadZero_14, Hasitha_14, CaptainRex_14, Zayuliv_14, Wardwill_15, GreenIvy_14
- Track 10 : Neferthena_14, Clock_14
- Track 11 : Nebulous_14
- Track 12 : KatChan_14, Chepli_14, Luna18_14
- Track 13 : Morrigan_14
- Track 14 : Juicer_14, Jemerald_14

Summary of Final Annotations (See graph section above for start numbers):

The start number called the most often in the published annotations is 6, it was called in 21 of the 27 non-draft genes in the pham.

Genes that call this "Most Annotated" start:

- Alakazam_15, BaronJohn_14, CaptainRex_14, Clock_14, Fulton_14, GreenIvy_14, Hasitha_14, HerculesXL_14, Jemerald_14, Juicer_14, Kavo_13, Librie_14, LilTerminator_14, Mercedes_13, Nebulous_14, Neferthena_14, Penta_13, QuadZero_14, Schimmels22_14, Scissor2024_14, Tinyman4_14, Wardwill_15, WestPM_13, YuuY_12, Zayuliv_14, Zepp_15,

Genes that have the "Most Annotated" start but do not call it:

-

Genes that do not have the "Most Annotated" start:

- Chepli_14, Ixel_13, KatChan_14, Luna18_14, Morrigan_14, TwoBits_14,

Summary by start number:

Start 6:

- Found in 26 of 32 (81.2%) of genes in pham
- Manual Annotations of this start: 21 of 27
- Called 100.0% of time when present
- Phage (with cluster) where this start called: Alakazam_15 (EA5), BaronJohn_14 (EA5), CaptainRex_14 (EA5), Clock_14 (EA5), Fulton_14 (EA5), Greenlvy_14 (EA5), Hasitha_14 (EA5), HerculesXL_14 (EA11), Jemerald_14 (EA6), Juicer_14 (EA6), Kavo_13 (EA11), Librie_14 (EA5), LiITerminator_14 (EA5), Mercedes_13 (EA), Nebulous_14 (EA5), Neferthena_14 (EA5), Penta_13 (EA11), QuadZero_14 (EA5), Schimmels22_14 (EA11), Scissor2024_14 (EA11), Tinyman4_14 (EA11), Wardwill_15 (EA5), WestPM_13 (EA11), YuuY_12 (EA10), Zayuliv_14 (EA5), Zepp_15 (EA5),

Start 7:

- Found in 6 of 32 (18.8%) of genes in pham
- Manual Annotations of this start: 6 of 27
- Called 100.0% of time when present
- Phage (with cluster) where this start called: Chepli_14 (EA6), Ixel_13 (EA11), KatChan_14 (EA6), Luna18_14 (EA6), Morigan_14 (EA6), TwoBits_14 (EA5),

Summary by clusters:

There are 5 clusters represented in this pham: EA11, EA6, EA5, EA10, EA,

Info for manual annotations of cluster EA:

- Start number 6 was manually annotated 1 time for cluster EA.

Info for manual annotations of cluster EA10:

- Start number 6 was manually annotated 1 time for cluster EA10.

Info for manual annotations of cluster EA11:

- Start number 6 was manually annotated 4 times for cluster EA11.
- Start number 7 was manually annotated 1 time for cluster EA11.

Info for manual annotations of cluster EA5:

- Start number 6 was manually annotated 13 times for cluster EA5.
- Start number 7 was manually annotated 1 time for cluster EA5.

Info for manual annotations of cluster EA6:

- Start number 6 was manually annotated 2 times for cluster EA6.
- Start number 7 was manually annotated 4 times for cluster EA6.

Gene Information:

Gene: Alakazam_15 Start: 8832, Stop: 9137, Start Num: 6

Candidate Starts for Alakazam_15:

(Start: 6 @8832 has 21 MA's), (8, 8868), (10, 8901), (13, 8967),

Gene: BaronJohn_14 Start: 8032, Stop: 8364, Start Num: 6

Candidate Starts for BaronJohn_14:
(Start: 6 @8032 has 21 MA's), (8, 8068), (12, 8140), (13, 8167),

Gene: CaptainRex_14 Start: 8035, Stop: 8367, Start Num: 6
Candidate Starts for CaptainRex_14:
(Start: 6 @8035 has 21 MA's), (8, 8071), (12, 8143), (13, 8170),

Gene: Chepli_14 Start: 8030, Stop: 8344, Start Num: 7
Candidate Starts for Chepli_14:
(Start: 7 @8030 has 6 MA's), (8, 8066), (12, 8138), (13, 8165), (16, 8210),

Gene: Clock_14 Start: 8762, Stop: 9085, Start Num: 6
Candidate Starts for Clock_14:
(Start: 6 @8762 has 21 MA's), (8, 8798), (13, 8897),

Gene: Fulton_14 Start: 8017, Stop: 8349, Start Num: 6
Candidate Starts for Fulton_14:
(Start: 6 @8017 has 21 MA's), (8, 8053), (12, 8125), (13, 8152),

Gene: Greenlvy_14 Start: 8034, Stop: 8366, Start Num: 6
Candidate Starts for Greenlvy_14:
(Start: 6 @8034 has 21 MA's), (8, 8070), (12, 8142), (13, 8169),

Gene: Hasitha_14 Start: 8035, Stop: 8367, Start Num: 6
Candidate Starts for Hasitha_14:
(Start: 6 @8035 has 21 MA's), (8, 8071), (12, 8143), (13, 8170),

Gene: HerculesXL_14 Start: 8142, Stop: 8444, Start Num: 6
Candidate Starts for HerculesXL_14:
(1, 7767), (2, 7773), (Start: 6 @8142 has 21 MA's), (8, 8178), (12, 8250), (13, 8277),

Gene: Ixel_13 Start: 7700, Stop: 8020, Start Num: 7
Candidate Starts for Ixel_13:
(Start: 7 @7700 has 6 MA's), (8, 7736), (12, 7808), (13, 7835),

Gene: Jemerald_14 Start: 8998, Stop: 9297, Start Num: 6
Candidate Starts for Jemerald_14:
(Start: 6 @8998 has 21 MA's), (10, 9067), (12, 9106), (13, 9133),

Gene: Juicer_14 Start: 8998, Stop: 9297, Start Num: 6
Candidate Starts for Juicer_14:
(Start: 6 @8998 has 21 MA's), (10, 9067), (12, 9106), (13, 9133),

Gene: KatChan_14 Start: 8036, Stop: 8350, Start Num: 7
Candidate Starts for KatChan_14:
(Start: 7 @8036 has 6 MA's), (8, 8072), (12, 8144), (13, 8171), (16, 8216),

Gene: Kavo_13 Start: 7974, Stop: 8276, Start Num: 6
Candidate Starts for Kavo_13:
(Start: 6 @7974 has 21 MA's), (8, 8010), (12, 8082), (13, 8109),

Gene: Librie_14 Start: 8035, Stop: 8367, Start Num: 6
Candidate Starts for Librie_14:

(Start: 6 @8035 has 21 MA's), (8, 8071), (12, 8143), (13, 8170),

Gene: LilTerminator_14 Start: 8041, Stop: 8373, Start Num: 6

Candidate Starts for LilTerminator_14:

(Start: 6 @8041 has 21 MA's), (8, 8077), (12, 8149), (13, 8176),

Gene: Luna18_14 Start: 8036, Stop: 8350, Start Num: 7

Candidate Starts for Luna18_14:

(Start: 7 @8036 has 6 MA's), (8, 8072), (12, 8144), (13, 8171), (16, 8216),

Gene: Mercedes_13 Start: 7790, Stop: 8113, Start Num: 6

Candidate Starts for Mercedes_13:

(5, 7682), (Start: 6 @7790 has 21 MA's), (8, 7826), (12, 7898), (13, 7925), (17, 8012),

Gene: Morrigan_14 Start: 8937, Stop: 9251, Start Num: 7

Candidate Starts for Morrigan_14:

(Start: 7 @8937 has 6 MA's), (8, 8973), (9, 8994), (12, 9045), (13, 9072), (15, 9096), (16, 9117),

Gene: Nebulous_14 Start: 8771, Stop: 9094, Start Num: 6

Candidate Starts for Nebulous_14:

(Start: 6 @8771 has 21 MA's), (8, 8807), (10, 8840), (12, 8879), (13, 8906), (14, 8909),

Gene: Neferthema_14 Start: 8782, Stop: 9105, Start Num: 6

Candidate Starts for Neferthema_14:

(Start: 6 @8782 has 21 MA's), (8, 8818), (13, 8917),

Gene: Penta_13 Start: 7971, Stop: 8273, Start Num: 6

Candidate Starts for Penta_13:

(Start: 6 @7971 has 21 MA's), (8, 8007), (12, 8079), (13, 8106),

Gene: QuadZero_14 Start: 8047, Stop: 8379, Start Num: 6

Candidate Starts for QuadZero_14:

(Start: 6 @8047 has 21 MA's), (8, 8083), (12, 8155), (13, 8182),

Gene: Schimmels22_14 Start: 8501, Stop: 8803, Start Num: 6

Candidate Starts for Schimmels22_14:

(Start: 6 @8501 has 21 MA's), (8, 8537), (12, 8609), (13, 8636),

Gene: Scissor2024_14 Start: 8139, Stop: 8441, Start Num: 6

Candidate Starts for Scissor2024_14:

(Start: 6 @8139 has 21 MA's), (8, 8175), (12, 8247), (13, 8274),

Gene: Tinyman4_14 Start: 8142, Stop: 8444, Start Num: 6

Candidate Starts for Tinyman4_14:

(Start: 6 @8142 has 21 MA's), (8, 8178), (12, 8250), (13, 8277),

Gene: TwoBits_14 Start: 7838, Stop: 8170, Start Num: 7

Candidate Starts for TwoBits_14:

(Start: 7 @7838 has 6 MA's), (8, 7874), (12, 7946), (13, 7973),

Gene: Wardwill_15 Start: 8203, Stop: 8535, Start Num: 6

Candidate Starts for Wardwill_15:

(Start: 6 @8203 has 21 MA's), (8, 8239), (12, 8311), (13, 8338),

Gene: WestPM_13 Start: 7980, Stop: 8282, Start Num: 6

Candidate Starts for WestPM_13:

(Start: 6 @7980 has 21 MA's), (8, 8016), (12, 8088), (13, 8115),

Gene: YuuY_12 Start: 7805, Stop: 8095, Start Num: 6

Candidate Starts for YuuY_12:

(3, 7631), (4, 7685), (Start: 6 @7805 has 21 MA's), (9, 7862), (11, 7883), (16, 7985),

Gene: Zayuliv_14 Start: 8023, Stop: 8355, Start Num: 6

Candidate Starts for Zayuliv_14:

(Start: 6 @8023 has 21 MA's), (8, 8059), (12, 8131), (13, 8158),

Gene: Zepp_15 Start: 8032, Stop: 8364, Start Num: 6

Candidate Starts for Zepp_15:

(Start: 6 @8032 has 21 MA's), (8, 8068), (12, 8140), (13, 8167),