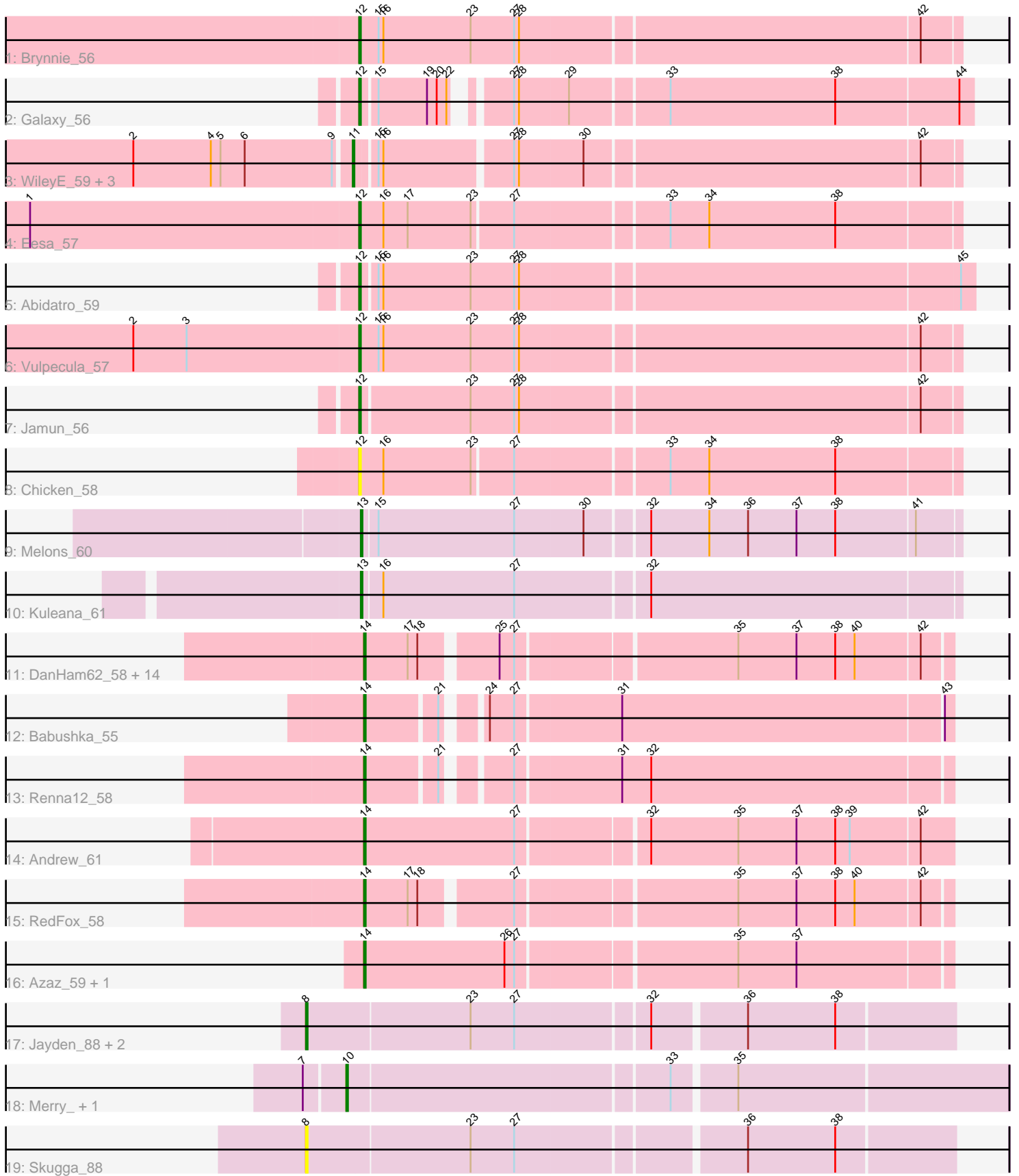


Pham 292833



Note: Tracks are now grouped by subcluster and scaled. Switching in subcluster is indicated by changes in track color. Track scale is now set by default to display the region 30 bp upstream of start 1 to 30 bp downstream of the last possible start. If this default region is judged to be packed too tightly with annotated starts, the track will be further scaled to only show that region of the ORF with annotated starts. This action will be indicated by adding "Zoomed" to the title. For starts, yellow indicates the location of called starts comprised solely of Glimmer/GeneMark auto-annotations, green indicates the location of called starts with at least 1 manual gene annotation.

Pham 292833 Report

This analysis was run 04/18/26 on database version 643.

Pham number 292833 has 40 members, 10 are drafts.

Phages represented in each track:

- Track 1 : Brynnie_56
- Track 2 : Galaxy_56
- Track 3 : WileyE_59, Basilisk_58, Ruchi_57, Chickaboom_59
- Track 4 : Eesa_57
- Track 5 : Abidatro_59
- Track 6 : Vulpecula_57
- Track 7 : Jamun_56
- Track 8 : Chicken_58
- Track 9 : Melons_60
- Track 10 : Kuleana_61
- Track 11 : DanHam62_58, Amphitrite_58, Fingolfin_58, Juno112_57, AdoptaAdorbs_57, PhluffyCoco_58, AmiCi24_57, KHumphrey_58, HamCheese_58, Atlantica_58, Laphuphu24k_57, Camara_58, Glotell_59, Rattail_58, Oppalora_57
- Track 12 : Babushka_55
- Track 13 : Renna12_58
- Track 14 : Andrew_61
- Track 15 : RedFox_58
- Track 16 : Azaz_59, Leona_57
- Track 17 : Jayden_88, Gina_93, Teamocil_93
- Track 18 : Merry_, Sunny_
- Track 19 : Skugga_88

Summary of Final Annotations (See graph section above for start numbers):

The start number called the most often in the published annotations is 14, it was called in 13 of the 30 non-draft genes in the pham.

Genes that call this "Most Annotated" start:

- AdoptaAdorbs_57, AmiCi24_57, Amphitrite_58, Andrew_61, Atlantica_58, Azaz_59, Babushka_55, Camara_58, DanHam62_58, Fingolfin_58, Glotell_59, HamCheese_58, Juno112_57, KHumphrey_58, Laphuphu24k_57, Leona_57, Oppalora_57, PhluffyCoco_58, Rattail_58, RedFox_58, Renna12_58,

Genes that have the "Most Annotated" start but do not call it:

-

Genes that do not have the "Most Annotated" start:

- Abidatro_59, Basilisk_58, Brynnie_56, Chickaboom_59, Chicken_58, Eesa_57, Galaxy_56, Gina_93, Jamun_56, Jayden_88, Kuleana_61, Melons_60, Merry_, Ruchi_57, Skugga_88, Sunny_, Teamocil_93, Vulpecula_57, WileyE_59,

Summary by start number:

Start 8:

- Found in 4 of 40 (10.0%) of genes in pham
- Manual Annotations of this start: 3 of 30
- Called 100.0% of time when present
- Phage (with cluster) where this start called: Gina_93 (EC), Jayden_88 (EC), Skugga_88 (EC), Teamocil_93 (EC),

Start 10:

- Found in 2 of 40 (5.0%) of genes in pham
- Manual Annotations of this start: 2 of 30
- Called 100.0% of time when present
- Phage (with cluster) where this start called: Merry_ (EC), Sunny_ (EC),

Start 11:

- Found in 4 of 40 (10.0%) of genes in pham
- Manual Annotations of this start: 4 of 30
- Called 100.0% of time when present
- Phage (with cluster) where this start called: Basilisk_58 (AS1), Chickaboom_59 (AS1), Ruchi_57 (AS1), WileyE_59 (AS1),

Start 12:

- Found in 7 of 40 (17.5%) of genes in pham
- Manual Annotations of this start: 6 of 30
- Called 100.0% of time when present
- Phage (with cluster) where this start called: Abidatro_59 (AS1), Brynnie_56 (AS1), Chicken_58 (AS1), Eesa_57 (AS1), Galaxy_56 (AS1), Jamun_56 (AS1), Vulpecula_57 (AS1),

Start 13:

- Found in 2 of 40 (5.0%) of genes in pham
- Manual Annotations of this start: 2 of 30
- Called 100.0% of time when present
- Phage (with cluster) where this start called: Kuleana_61 (AS2), Melons_60 (AS2),

Start 14:

- Found in 21 of 40 (52.5%) of genes in pham
- Manual Annotations of this start: 13 of 30
- Called 100.0% of time when present
- Phage (with cluster) where this start called: AdoptaAdorbs_57 (AS3), AmiCi24_57 (AS3), Amphitrite_58 (AS3), Andrew_61 (AS3), Atlantica_58 (AS3), Azaz_59 (AS3), Babushka_55 (AS3), Camara_58 (AS3), DanHam62_58 (AS3), Fingolfin_58 (AS3), Glotell_59 (AS3), HamCheese_58 (AS3), Juno112_57 (AS3), KHumphrey_58 (AS3), Laphuphu24k_57 (AS3), Leona_57 (AS3), Oppalora_57 (AS3), PhluffyCoco_58 (AS3), Rattail_58 (AS3), RedFox_58 (AS3), Renna12_58 (AS3),

Summary by clusters:

There are 4 clusters represented in this pham: AS3, AS2, AS1, EC,

Info for manual annotations of cluster AS1:

- Start number 11 was manually annotated 4 times for cluster AS1.
- Start number 12 was manually annotated 6 times for cluster AS1.

Info for manual annotations of cluster AS2:

- Start number 13 was manually annotated 2 times for cluster AS2.

Info for manual annotations of cluster AS3:

- Start number 14 was manually annotated 13 times for cluster AS3.

Info for manual annotations of cluster EC:

- Start number 8 was manually annotated 3 times for cluster EC.
- Start number 10 was manually annotated 2 times for cluster EC.

Gene Information:

Gene: Abidatro_59 Start: 36616, Stop: 36984, Start Num: 12

Candidate Starts for Abidatro_59:

(Start: 12 @36616 has 6 MA's), (15, 36625), (16, 36628), (23, 36682), (27, 36709), (28, 36712), (45, 36976),

Gene: AdoptaAdorbs_57 Start: 35149, Stop: 35490, Start Num: 14

Candidate Starts for AdoptaAdorbs_57:

(Start: 14 @35149 has 13 MA's), (17, 35176), (18, 35182), (25, 35224), (27, 35233), (35, 35362), (37, 35398), (38, 35422), (40, 35434), (42, 35473),

Gene: AmiCi24_57 Start: 35258, Stop: 35599, Start Num: 14

Candidate Starts for AmiCi24_57:

(Start: 14 @35258 has 13 MA's), (17, 35285), (18, 35291), (25, 35333), (27, 35342), (35, 35471), (37, 35507), (38, 35531), (40, 35543), (42, 35582),

Gene: Amphitrite_58 Start: 35148, Stop: 35489, Start Num: 14

Candidate Starts for Amphitrite_58:

(Start: 14 @35148 has 13 MA's), (17, 35175), (18, 35181), (25, 35223), (27, 35232), (35, 35361), (37, 35397), (38, 35421), (40, 35433), (42, 35472),

Gene: Andrew_61 Start: 35776, Stop: 36129, Start Num: 14

Candidate Starts for Andrew_61:

(Start: 14 @35776 has 13 MA's), (27, 35869), (32, 35944), (35, 35998), (37, 36034), (38, 36058), (39, 36067), (42, 36109),

Gene: Atlantica_58 Start: 35260, Stop: 35601, Start Num: 14

Candidate Starts for Atlantica_58:

(Start: 14 @35260 has 13 MA's), (17, 35287), (18, 35293), (25, 35335), (27, 35344), (35, 35473), (37, 35509), (38, 35533), (40, 35545), (42, 35584),

Gene: Azaz_59 Start: 35344, Stop: 35694, Start Num: 14
Candidate Starts for Azaz_59:
(Start: 14 @35344 has 13 MA's), (26, 35431), (27, 35437), (35, 35566), (37, 35602),

Gene: Babushka_55 Start: 35059, Stop: 35397, Start Num: 14
Candidate Starts for Babushka_55:
(Start: 14 @35059 has 13 MA's), (21, 35101), (24, 35119), (27, 35134), (31, 35197), (43, 35392),

Gene: Basilisk_58 Start: 35995, Stop: 36351, Start Num: 11
Candidate Starts for Basilisk_58:
(2, 35863), (4, 35911), (5, 35917), (6, 35932), (9, 35986), (Start: 11 @35995 has 4 MA's), (15, 36007),
(16, 36010), (27, 36085), (28, 36088), (30, 36127), (42, 36328),

Gene: Brynnie_56 Start: 35747, Stop: 36109, Start Num: 12
Candidate Starts for Brynnie_56:
(Start: 12 @35747 has 6 MA's), (15, 35759), (16, 35762), (23, 35816), (27, 35843), (28, 35846), (42,
36086),

Gene: Camara_58 Start: 35151, Stop: 35492, Start Num: 14
Candidate Starts for Camara_58:
(Start: 14 @35151 has 13 MA's), (17, 35178), (18, 35184), (25, 35226), (27, 35235), (35, 35364), (37,
35400), (38, 35424), (40, 35436), (42, 35475),

Gene: Chickaboom_59 Start: 36331, Stop: 36687, Start Num: 11
Candidate Starts for Chickaboom_59:
(2, 36199), (4, 36247), (5, 36253), (6, 36268), (9, 36322), (Start: 11 @36331 has 4 MA's), (15, 36343),
(16, 36346), (27, 36421), (28, 36424), (30, 36463), (42, 36664),

Gene: Chicken_58 Start: 36537, Stop: 36896, Start Num: 12
Candidate Starts for Chicken_58:
(Start: 12 @36537 has 6 MA's), (16, 36552), (23, 36606), (27, 36630), (33, 36720), (34, 36744), (38,
36822),

Gene: DanHam62_58 Start: 35259, Stop: 35600, Start Num: 14
Candidate Starts for DanHam62_58:
(Start: 14 @35259 has 13 MA's), (17, 35286), (18, 35292), (25, 35334), (27, 35343), (35, 35472), (37,
35508), (38, 35532), (40, 35544), (42, 35583),

Gene: Eesa_57 Start: 36964, Stop: 37323, Start Num: 12
Candidate Starts for Eesa_57:
(1, 36763), (Start: 12 @36964 has 6 MA's), (16, 36979), (17, 36994), (23, 37033), (27, 37057), (33,
37147), (34, 37171), (38, 37249),

Gene: Fingolfin_58 Start: 35262, Stop: 35603, Start Num: 14
Candidate Starts for Fingolfin_58:
(Start: 14 @35262 has 13 MA's), (17, 35289), (18, 35295), (25, 35337), (27, 35346), (35, 35475), (37,
35511), (38, 35535), (40, 35547), (42, 35586),

Gene: Galaxy_56 Start: 35033, Stop: 35383, Start Num: 12
Candidate Starts for Galaxy_56:
(Start: 12 @35033 has 6 MA's), (15, 35042), (19, 35072), (20, 35078), (22, 35084), (27, 35108), (28,
35111), (29, 35141), (33, 35198), (38, 35300), (44, 35375),

Gene: Gina_93 Start: 52064, Stop: 52447, Start Num: 8
Candidate Starts for Gina_93:
(Start: 8 @52064 has 3 MA's), (23, 52163), (27, 52190), (32, 52268), (36, 52322), (38, 52376),

Gene: Glotell_59 Start: 35306, Stop: 35647, Start Num: 14
Candidate Starts for Glotell_59:
(Start: 14 @35306 has 13 MA's), (17, 35333), (18, 35339), (25, 35381), (27, 35390), (35, 35519), (37, 35555), (38, 35579), (40, 35591), (42, 35630),

Gene: HamCheese_58 Start: 35246, Stop: 35587, Start Num: 14
Candidate Starts for HamCheese_58:
(Start: 14 @35246 has 13 MA's), (17, 35273), (18, 35279), (25, 35321), (27, 35330), (35, 35459), (37, 35495), (38, 35519), (40, 35531), (42, 35570),

Gene: Jamun_56 Start: 36265, Stop: 36624, Start Num: 12
Candidate Starts for Jamun_56:
(Start: 12 @36265 has 6 MA's), (23, 36331), (27, 36358), (28, 36361), (42, 36601),

Gene: Jayden_88 Start: 51672, Stop: 52055, Start Num: 8
Candidate Starts for Jayden_88:
(Start: 8 @51672 has 3 MA's), (23, 51771), (27, 51798), (32, 51876), (36, 51930), (38, 51984),

Gene: Juno112_57 Start: 35262, Stop: 35603, Start Num: 14
Candidate Starts for Juno112_57:
(Start: 14 @35262 has 13 MA's), (17, 35289), (18, 35295), (25, 35337), (27, 35346), (35, 35475), (37, 35511), (38, 35535), (40, 35547), (42, 35586),

Gene: KHumphrey_58 Start: 35150, Stop: 35491, Start Num: 14
Candidate Starts for KHumphrey_58:
(Start: 14 @35150 has 13 MA's), (17, 35177), (18, 35183), (25, 35225), (27, 35234), (35, 35363), (37, 35399), (38, 35423), (40, 35435), (42, 35474),

Gene: Kuleana_61 Start: 35255, Stop: 35614, Start Num: 13
Candidate Starts for Kuleana_61:
(Start: 13 @35255 has 2 MA's), (16, 35267), (27, 35348), (32, 35426),

Gene: Laphuphu24k_57 Start: 35246, Stop: 35587, Start Num: 14
Candidate Starts for Laphuphu24k_57:
(Start: 14 @35246 has 13 MA's), (17, 35273), (18, 35279), (25, 35321), (27, 35330), (35, 35459), (37, 35495), (38, 35519), (40, 35531), (42, 35570),

Gene: Leona_57 Start: 35345, Stop: 35695, Start Num: 14
Candidate Starts for Leona_57:
(Start: 14 @35345 has 13 MA's), (26, 35432), (27, 35438), (35, 35567), (37, 35603),

Gene: Melons_60 Start: 34532, Stop: 34891, Start Num: 13
Candidate Starts for Melons_60:
(Start: 13 @34532 has 2 MA's), (15, 34541), (27, 34625), (30, 34667), (32, 34703), (34, 34739), (36, 34763), (37, 34793), (38, 34817), (41, 34865),

Gene: Merry_ Start: 52137, Stop: 52529, Start Num: 10
Candidate Starts for Merry_:
(7, 52113), (Start: 10 @52137 has 2 MA's), (33, 52329), (35, 52365),

Gene: Oppalora_57 Start: 35260, Stop: 35601, Start Num: 14

Candidate Starts for Oppalora_57:

(Start: 14 @35260 has 13 MA's), (17, 35287), (18, 35293), (25, 35335), (27, 35344), (35, 35473), (37, 35509), (38, 35533), (40, 35545), (42, 35584),

Gene: PhluffyCoco_58 Start: 35361, Stop: 35702, Start Num: 14

Candidate Starts for PhluffyCoco_58:

(Start: 14 @35361 has 13 MA's), (17, 35388), (18, 35394), (25, 35436), (27, 35445), (35, 35574), (37, 35610), (38, 35634), (40, 35646), (42, 35685),

Gene: Rattail_58 Start: 35446, Stop: 35787, Start Num: 14

Candidate Starts for Rattail_58:

(Start: 14 @35446 has 13 MA's), (17, 35473), (18, 35479), (25, 35521), (27, 35530), (35, 35659), (37, 35695), (38, 35719), (40, 35731), (42, 35770),

Gene: RedFox_58 Start: 35359, Stop: 35700, Start Num: 14

Candidate Starts for RedFox_58:

(Start: 14 @35359 has 13 MA's), (17, 35386), (18, 35392), (27, 35443), (35, 35572), (37, 35608), (38, 35632), (40, 35644), (42, 35683),

Gene: Renna12_58 Start: 35475, Stop: 35813, Start Num: 14

Candidate Starts for Renna12_58:

(Start: 14 @35475 has 13 MA's), (21, 35517), (27, 35550), (31, 35613), (32, 35631),

Gene: Ruchi_57 Start: 35917, Stop: 36273, Start Num: 11

Candidate Starts for Ruchi_57:

(2, 35785), (4, 35833), (5, 35839), (6, 35854), (9, 35908), (Start: 11 @35917 has 4 MA's), (15, 35929), (16, 35932), (27, 36007), (28, 36010), (30, 36049), (42, 36250),

Gene: Skugga_88 Start: 52081, Stop: 52464, Start Num: 8

Candidate Starts for Skugga_88:

(Start: 8 @52081 has 3 MA's), (23, 52180), (27, 52207), (36, 52339), (38, 52393),

Gene: Sunny_ Start: 52139, Stop: 52531, Start Num: 10

Candidate Starts for Sunny_:

(7, 52115), (Start: 10 @52139 has 2 MA's), (33, 52331), (35, 52367),

Gene: Teamocil_93 Start: 52157, Stop: 52540, Start Num: 8

Candidate Starts for Teamocil_93:

(Start: 8 @52157 has 3 MA's), (23, 52256), (27, 52283), (32, 52361), (36, 52415), (38, 52469),

Gene: Vulpecula_57 Start: 35583, Stop: 35945, Start Num: 12

Candidate Starts for Vulpecula_57:

(2, 35445), (3, 35478), (Start: 12 @35583 has 6 MA's), (15, 35595), (16, 35598), (23, 35652), (27, 35679), (28, 35682), (42, 35922),

Gene: WileyE_59 Start: 36331, Stop: 36687, Start Num: 11

Candidate Starts for WileyE_59:

(2, 36199), (4, 36247), (5, 36253), (6, 36268), (9, 36322), (Start: 11 @36331 has 4 MA's), (15, 36343), (16, 36346), (27, 36421), (28, 36424), (30, 36463), (42, 36664),