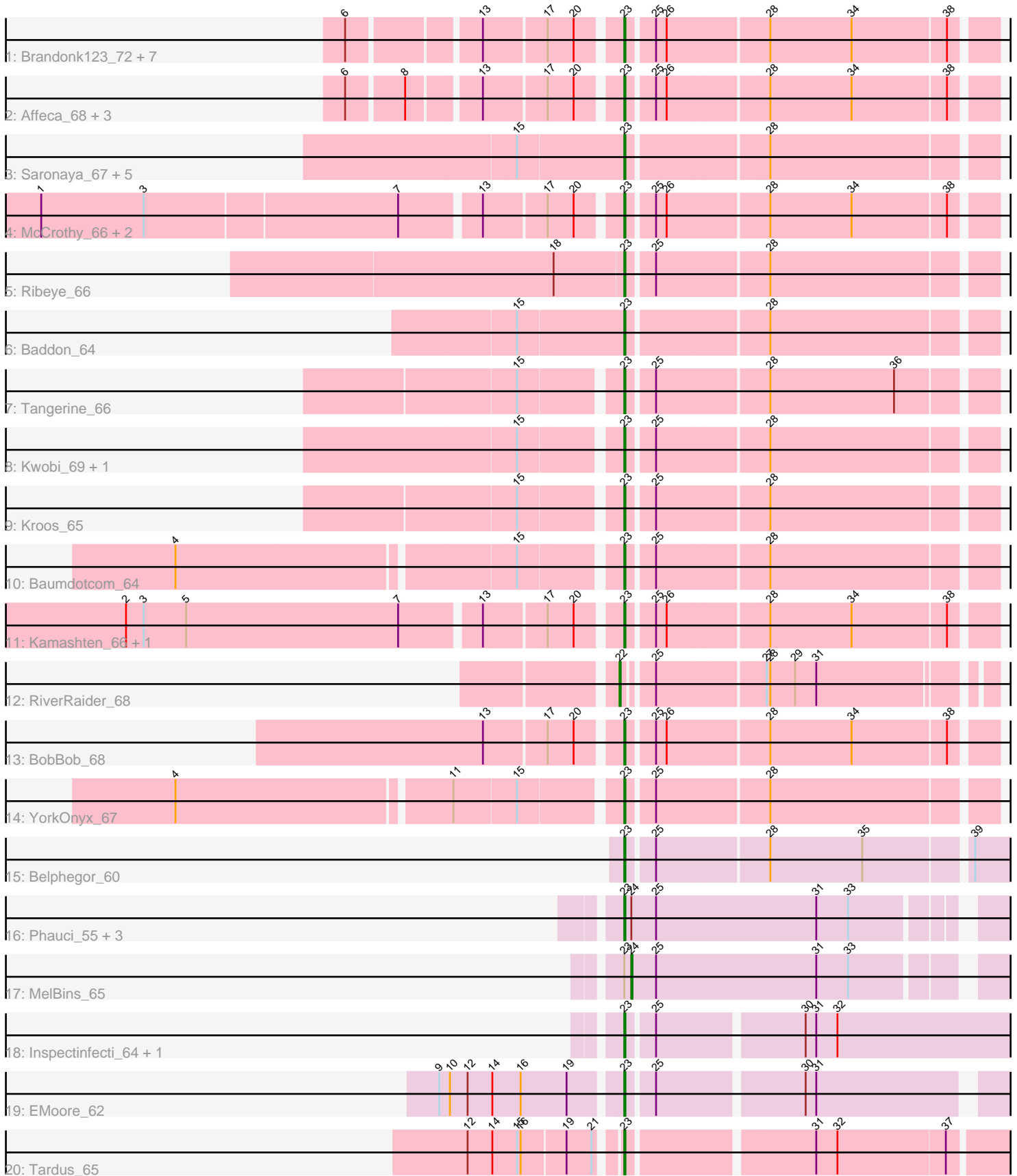


Pham 292940



Note: Tracks are now grouped by subcluster and scaled. Switching in subcluster is indicated by changes in track color. Track scale is now set by default to display the region 30 bp upstream of start 1 to 30 bp downstream of the last possible start. If this default region is judged to be packed too tightly with annotated starts, the track will be further scaled to only show that region of the ORF with annotated starts. This action will be indicated by adding "Zoomed" to the title. For starts, yellow indicates the location of called starts comprised solely of Glimmer/GeneMark auto-annotations, green indicates the location of called starts with at least 1 manual gene annotation.

Pham 292940 Report

This analysis was run 04/18/26 on database version 643.

Pham number 292940 has 43 members, 1 are drafts.

Phages represented in each track:

- Track 1 : Brandonk123_72, Nordenberg_66, MoontowerMania_67, Rofo_68, Vivi2_72, Charming_71, Fosterous_70, Tangent_70
- Track 2 : Affeca_68, Angelicage_66, Love_72, Shivanishola_67
- Track 3 : Saronaya_67, Flatwoods_66, Derg_60, Gustavo_67, Tycho_64, Bizzy_66
- Track 4 : McCrothy_66, Paries_69, Galadriel_67
- Track 5 : Ribeye_66
- Track 6 : Baddon_64
- Track 7 : Tangerine_66
- Track 8 : Kwobi_69, StorminNorm_66
- Track 9 : Kroos_65
- Track 10 : Baumdotcom_64
- Track 11 : Kamashten_66, Thing3_66
- Track 12 : RiverRaider_68
- Track 13 : BobBob_68
- Track 14 : YorkOnyx_67
- Track 15 : Belphegor_60
- Track 16 : Phauci_55, Phinally_63, Leonard_63, Hans_65
- Track 17 : MelBins_65
- Track 18 : Inspectinfecti_64, Ali17_60
- Track 19 : EMOore_62
- Track 20 : Tardus_65

Summary of Final Annotations (See graph section above for start numbers):

The start number called the most often in the published annotations is 23, it was called in 40 of the 42 non-draft genes in the pham.

Genes that call this "Most Annotated" start:

- Affeca_68, Ali17_60, Angelicage_66, Baddon_64, Baumdotcom_64, Belphegor_60, Bizzy_66, BobBob_68, Brandonk123_72, Charming_71, Derg_60, EMOore_62, Flatwoods_66, Fosterous_70, Galadriel_67, Gustavo_67, Hans_65, Inspectinfecti_64, Kamashten_66, Kroos_65, Kwobi_69, Leonard_63, Love_72, McCrothy_66, MoontowerMania_67, Nordenberg_66, Paries_69, Phauci_55, Phinally_63, Ribeye_66, Rofo_68, Saronaya_67, Shivanishola_67, StorminNorm_66, Tangent_70,

Tangerine_66, Tardus_65, Thing3_66, Tycho_64, Vivi2_72, YorkOnyx_67,

Genes that have the "Most Annotated" start but do not call it:

- MelBins_65,

Genes that do not have the "Most Annotated" start:

- RiverRaider_68,

Summary by start number:

Start 22:

- Found in 1 of 43 (2.3%) of genes in pham
- Manual Annotations of this start: 1 of 42
- Called 100.0% of time when present
- Phage (with cluster) where this start called: RiverRaider_68 (DE1),

Start 23:

- Found in 42 of 43 (97.7%) of genes in pham
- Manual Annotations of this start: 40 of 42
- Called 97.6% of time when present
- Phage (with cluster) where this start called: Affeca_68 (DE1), Ali17_60 (DE2), Angelicage_66 (DE1), Baddon_64 (DE1), Baumdotcom_64 (DE1), Belphegor_60 (DE2), Bizzy_66 (DE1), BobBob_68 (DE1), Brandonk123_72 (DE1), Charming_71 (DE1), Derg_60 (DE1), EMoore_62 (DE2), Flatwoods_66 (DE1), Fosterous_70 (DE1), Galadriel_67 (DE1), Gustavo_67 (DE1), Hans_65 (DE2), Inspectinfecti_64 (DE2), Kamashten_66 (DE1), Kroos_65 (DE1), Kwobi_69 (DE1), Leonard_63 (DE2), Love_72 (DE1), McCrothy_66 (DE1), MoontowerMania_67 (DE1), Nordenberg_66 (DE1), Paries_69 (DE1), Phauci_55 (DE2), Phinally_63 (DE2), Ribeye_66 (DE1), Rofo_68 (DE1), Saronaya_67 (DE1), Shivanishola_67 (DE1), StorminNorm_66 (DE1), Tangent_70 (DE1), Tangerine_66 (DE1), Tardus_65 (DE4), Thing3_66 (DE1), Tycho_64 (DE1), Vivi2_72 (DE1), YorkOnyx_67 (DE1),

Start 24:

- Found in 5 of 43 (11.6%) of genes in pham
- Manual Annotations of this start: 1 of 42
- Called 20.0% of time when present
- Phage (with cluster) where this start called: MelBins_65 (DE2),

Summary by clusters:

There are 3 clusters represented in this pham: DE1, DE2, DE4,

Info for manual annotations of cluster DE1:

- Start number 22 was manually annotated 1 time for cluster DE1.
- Start number 23 was manually annotated 31 times for cluster DE1.

Info for manual annotations of cluster DE2:

- Start number 23 was manually annotated 8 times for cluster DE2.
- Start number 24 was manually annotated 1 time for cluster DE2.

Info for manual annotations of cluster DE4:

- Start number 23 was manually annotated 1 time for cluster DE4.

Gene Information:

Gene: Affeca_68 Start: 51708, Stop: 52001, Start Num: 23

Candidate Starts for Affeca_68:

(6, 51507), (8, 51552), (13, 51606), (17, 51654), (20, 51675), (Start: 23 @51708 has 40 MA's), (25, 51729), (26, 51738), (28, 51819), (34, 51888), (38, 51966),

Gene: Ali17_60 Start: 48387, Stop: 48704, Start Num: 23

Candidate Starts for Ali17_60:

(Start: 23 @48387 has 40 MA's), (25, 48408), (30, 48525), (31, 48534), (32, 48552),

Gene: Angelicage_66 Start: 51660, Stop: 51953, Start Num: 23

Candidate Starts for Angelicage_66:

(6, 51459), (8, 51504), (13, 51558), (17, 51606), (20, 51627), (Start: 23 @51660 has 40 MA's), (25, 51681), (26, 51690), (28, 51771), (34, 51840), (38, 51918),

Gene: Baddon_64 Start: 50498, Stop: 50791, Start Num: 23

Candidate Starts for Baddon_64:

(15, 50411), (Start: 23 @50498 has 40 MA's), (28, 50609),

Gene: Baumdotcom_64 Start: 49775, Stop: 50068, Start Num: 23

Candidate Starts for Baumdotcom_64:

(4, 49427), (15, 49700), (Start: 23 @49775 has 40 MA's), (25, 49796), (28, 49886),

Gene: Belphegor_60 Start: 48965, Stop: 49273, Start Num: 23

Candidate Starts for Belphegor_60:

(Start: 23 @48965 has 40 MA's), (25, 48986), (28, 49076), (35, 49154), (39, 49238),

Gene: Bizzy_66 Start: 49695, Stop: 49988, Start Num: 23

Candidate Starts for Bizzy_66:

(15, 49608), (Start: 23 @49695 has 40 MA's), (28, 49806),

Gene: BobBob_68 Start: 50960, Stop: 51253, Start Num: 23

Candidate Starts for BobBob_68:

(13, 50858), (17, 50906), (20, 50927), (Start: 23 @50960 has 40 MA's), (25, 50981), (26, 50990), (28, 51071), (34, 51140), (38, 51218),

Gene: Brandonk123_72 Start: 51352, Stop: 51645, Start Num: 23

Candidate Starts for Brandonk123_72:

(6, 51151), (13, 51250), (17, 51298), (20, 51319), (Start: 23 @51352 has 40 MA's), (25, 51373), (26, 51382), (28, 51463), (34, 51532), (38, 51610),

Gene: Charming_71 Start: 50704, Stop: 50997, Start Num: 23

Candidate Starts for Charming_71:

(6, 50503), (13, 50602), (17, 50650), (20, 50671), (Start: 23 @50704 has 40 MA's), (25, 50725), (26, 50734), (28, 50815), (34, 50884), (38, 50962),

Gene: Derg_60 Start: 48491, Stop: 48784, Start Num: 23

Candidate Starts for Derg_60:

(15, 48404), (Start: 23 @48491 has 40 MA's), (28, 48602),

Gene: EMoore_62 Start: 49720, Stop: 50019, Start Num: 23
Candidate Starts for EMoore_62:
(9, 49573), (10, 49582), (12, 49597), (14, 49618), (16, 49642), (19, 49681), (Start: 23 @49720 has 40 MA's), (25, 49741), (30, 49858), (31, 49867),

Gene: Flatwoods_66 Start: 49372, Stop: 49665, Start Num: 23
Candidate Starts for Flatwoods_66:
(15, 49285), (Start: 23 @49372 has 40 MA's), (28, 49483),

Gene: Fosterous_70 Start: 51698, Stop: 51991, Start Num: 23
Candidate Starts for Fosterous_70:
(6, 51497), (13, 51596), (17, 51644), (20, 51665), (Start: 23 @51698 has 40 MA's), (25, 51719), (26, 51728), (28, 51809), (34, 51878), (38, 51956),

Gene: Galadriel_67 Start: 51652, Stop: 51945, Start Num: 23
Candidate Starts for Galadriel_67:
(1, 51190), (3, 51277), (7, 51487), (13, 51550), (17, 51598), (20, 51619), (Start: 23 @51652 has 40 MA's), (25, 51673), (26, 51682), (28, 51763), (34, 51832), (38, 51910),

Gene: Gustavo_67 Start: 50574, Stop: 50867, Start Num: 23
Candidate Starts for Gustavo_67:
(15, 50487), (Start: 23 @50574 has 40 MA's), (28, 50685),

Gene: Hans_65 Start: 49127, Stop: 49390, Start Num: 23
Candidate Starts for Hans_65:
(Start: 23 @49127 has 40 MA's), (Start: 24 @49133 has 1 MA's), (25, 49154), (31, 49289), (33, 49316),

Gene: Inspectinfecti_64 Start: 49236, Stop: 49553, Start Num: 23
Candidate Starts for Inspectinfecti_64:
(Start: 23 @49236 has 40 MA's), (25, 49257), (30, 49374), (31, 49383), (32, 49401),

Gene: Kamashten_66 Start: 50778, Stop: 51071, Start Num: 23
Candidate Starts for Kamashten_66:
(2, 50382), (3, 50397), (5, 50433), (7, 50613), (13, 50676), (17, 50724), (20, 50745), (Start: 23 @50778 has 40 MA's), (25, 50799), (26, 50808), (28, 50889), (34, 50958), (38, 51036),

Gene: Kroos_65 Start: 50247, Stop: 50540, Start Num: 23
Candidate Starts for Kroos_65:
(15, 50172), (Start: 23 @50247 has 40 MA's), (25, 50268), (28, 50358),

Gene: Kwobi_69 Start: 50858, Stop: 51151, Start Num: 23
Candidate Starts for Kwobi_69:
(15, 50783), (Start: 23 @50858 has 40 MA's), (25, 50879), (28, 50969),

Gene: Leonard_63 Start: 49314, Stop: 49616, Start Num: 23
Candidate Starts for Leonard_63:
(Start: 23 @49314 has 40 MA's), (Start: 24 @49320 has 1 MA's), (25, 49341), (31, 49476), (33, 49503),

Gene: Love_72 Start: 52148, Stop: 52441, Start Num: 23
Candidate Starts for Love_72:
(6, 51947), (8, 51992), (13, 52046), (17, 52094), (20, 52115), (Start: 23 @52148 has 40 MA's), (25, 52169), (26, 52178), (28, 52259), (34, 52328), (38, 52406),

Gene: McCrothy_66 Start: 52237, Stop: 52530, Start Num: 23

Candidate Starts for McCrothy_66:

(1, 51775), (3, 51862), (7, 52072), (13, 52135), (17, 52183), (20, 52204), (Start: 23 @52237 has 40 MA's), (25, 52258), (26, 52267), (28, 52348), (34, 52417), (38, 52495),

Gene: MelBins_65 Start: 49556, Stop: 49855, Start Num: 24

Candidate Starts for MelBins_65:

(Start: 23 @49550 has 40 MA's), (Start: 24 @49556 has 1 MA's), (25, 49577), (31, 49712), (33, 49739),

Gene: MoontowerMania_67 Start: 52256, Stop: 52549, Start Num: 23

Candidate Starts for MoontowerMania_67:

(6, 52055), (13, 52154), (17, 52202), (20, 52223), (Start: 23 @52256 has 40 MA's), (25, 52277), (26, 52286), (28, 52367), (34, 52436), (38, 52514),

Gene: Nordenberg_66 Start: 50268, Stop: 50561, Start Num: 23

Candidate Starts for Nordenberg_66:

(6, 50067), (13, 50166), (17, 50214), (20, 50235), (Start: 23 @50268 has 40 MA's), (25, 50289), (26, 50298), (28, 50379), (34, 50448), (38, 50526),

Gene: Paries_69 Start: 51838, Stop: 52131, Start Num: 23

Candidate Starts for Paries_69:

(1, 51376), (3, 51463), (7, 51673), (13, 51736), (17, 51784), (20, 51805), (Start: 23 @51838 has 40 MA's), (25, 51859), (26, 51868), (28, 51949), (34, 52018), (38, 52096),

Gene: Phauci_55 Start: 46166, Stop: 46468, Start Num: 23

Candidate Starts for Phauci_55:

(Start: 23 @46166 has 40 MA's), (Start: 24 @46172 has 1 MA's), (25, 46193), (31, 46328), (33, 46355),

Gene: Phinally_63 Start: 49311, Stop: 49613, Start Num: 23

Candidate Starts for Phinally_63:

(Start: 23 @49311 has 40 MA's), (Start: 24 @49317 has 1 MA's), (25, 49338), (31, 49473), (33, 49500),

Gene: Ribeye_66 Start: 49730, Stop: 50023, Start Num: 23

Candidate Starts for Ribeye_66:

(18, 49673), (Start: 23 @49730 has 40 MA's), (25, 49751), (28, 49841),

Gene: RiverRaider_68 Start: 49325, Stop: 49609, Start Num: 22

Candidate Starts for RiverRaider_68:

(Start: 22 @49325 has 1 MA's), (25, 49346), (27, 49433), (28, 49436), (29, 49457), (31, 49475),

Gene: Rofo_68 Start: 51280, Stop: 51573, Start Num: 23

Candidate Starts for Rofo_68:

(6, 51079), (13, 51178), (17, 51226), (20, 51247), (Start: 23 @51280 has 40 MA's), (25, 51301), (26, 51310), (28, 51391), (34, 51460), (38, 51538),

Gene: Saronaya_67 Start: 50574, Stop: 50867, Start Num: 23

Candidate Starts for Saronaya_67:

(15, 50487), (Start: 23 @50574 has 40 MA's), (28, 50685),

Gene: Shivanishola_67 Start: 49920, Stop: 50213, Start Num: 23

Candidate Starts for Shivanishola_67:

(6, 49719), (8, 49764), (13, 49818), (17, 49866), (20, 49887), (Start: 23 @49920 has 40 MA's), (25, 49941), (26, 49950), (28, 50031), (34, 50100), (38, 50178),

Gene: StorminNorm_66 Start: 50358, Stop: 50651, Start Num: 23
Candidate Starts for StorminNorm_66:
(15, 50283), (Start: 23 @50358 has 40 MA's), (25, 50379), (28, 50469),

Gene: Tangent_70 Start: 50985, Stop: 51278, Start Num: 23
Candidate Starts for Tangent_70:
(6, 50784), (13, 50883), (17, 50931), (20, 50952), (Start: 23 @50985 has 40 MA's), (25, 51006), (26, 51015), (28, 51096), (34, 51165), (38, 51243),

Gene: Tangerine_66 Start: 49867, Stop: 50160, Start Num: 23
Candidate Starts for Tangerine_66:
(15, 49792), (Start: 23 @49867 has 40 MA's), (25, 49888), (28, 49978), (36, 50083),

Gene: Tardus_65 Start: 49700, Stop: 50008, Start Num: 23
Candidate Starts for Tardus_65:
(12, 49583), (14, 49604), (15, 49625), (16, 49628), (19, 49664), (21, 49685), (Start: 23 @49700 has 40 MA's), (31, 49847), (32, 49865), (37, 49955),

Gene: Thing3_66 Start: 50778, Stop: 51071, Start Num: 23
Candidate Starts for Thing3_66:
(2, 50382), (3, 50397), (5, 50433), (7, 50613), (13, 50676), (17, 50724), (20, 50745), (Start: 23 @50778 has 40 MA's), (25, 50799), (26, 50808), (28, 50889), (34, 50958), (38, 51036),

Gene: Tycho_64 Start: 49683, Stop: 49976, Start Num: 23
Candidate Starts for Tycho_64:
(15, 49596), (Start: 23 @49683 has 40 MA's), (28, 49794),

Gene: Vivi2_72 Start: 52040, Stop: 52333, Start Num: 23
Candidate Starts for Vivi2_72:
(6, 51839), (13, 51938), (17, 51986), (20, 52007), (Start: 23 @52040 has 40 MA's), (25, 52061), (26, 52070), (28, 52151), (34, 52220), (38, 52298),

Gene: YorkOnyx_67 Start: 49863, Stop: 50156, Start Num: 23
Candidate Starts for YorkOnyx_67:
(4, 49515), (11, 49737), (15, 49788), (Start: 23 @49863 has 40 MA's), (25, 49884), (28, 49974),