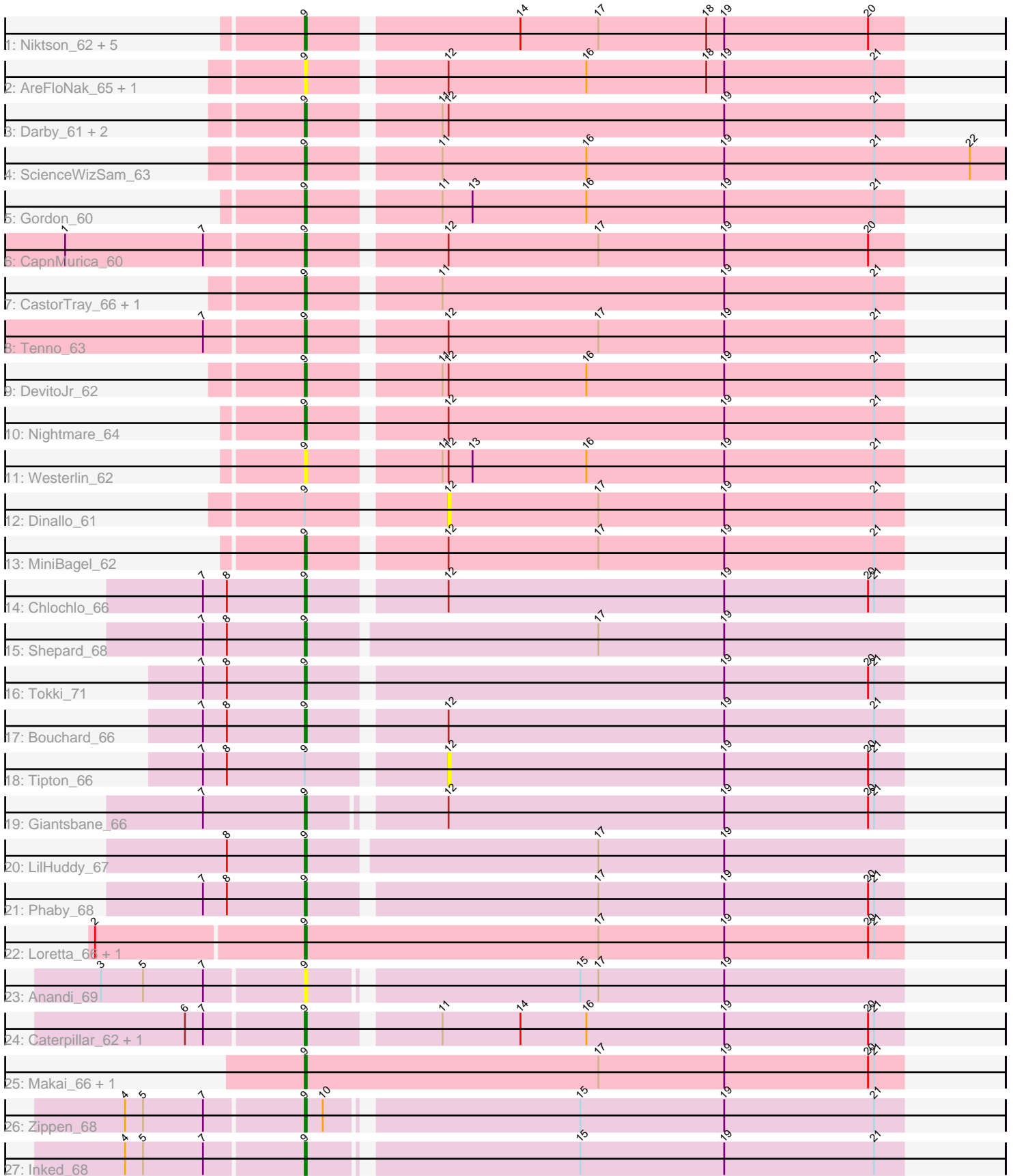


Pham 292963



Note: Tracks are now grouped by subcluster and scaled. Switching in subcluster is indicated by changes in track color. Track scale is now set by default to display the region 30 bp upstream of start 1 to 30 bp downstream of the last possible start. If this default region is judged to be packed too tightly with annotated starts, the track will be further scaled to only show that region of the ORF with annotated starts. This action will be indicated by adding "Zoomed" to the title. For starts, yellow indicates the location of called starts comprised solely of Glimmer/GeneMark auto-annotations, green indicates the location of called starts with at least 1 manual gene annotation.

Pham 292963 Report

This analysis was run 04/18/26 on database version 643.

Pham number 292963 has 39 members, 7 are drafts.

Phages represented in each track:

- Track 1 : Niktson_62, Brunswick_63, ElephantMan_62, Acai_62, Teacup_63, LucySwiss_62
- Track 2 : AreFloNak_65, Nivinsha_64
- Track 3 : Darby_61, Trustiboi_62, Synepsis_61
- Track 4 : ScienceWizSam_63
- Track 5 : Gordon_60
- Track 6 : CapnMurica_60
- Track 7 : CastorTray_66, Breylor17_62
- Track 8 : Tenno_63
- Track 9 : DevitoJr_62
- Track 10 : Nightmare_64
- Track 11 : Westerlin_62
- Track 12 : Dinallo_61
- Track 13 : MiniBagel_62
- Track 14 : Chlochlo_66
- Track 15 : Shepard_68
- Track 16 : Tokki_71
- Track 17 : Bouchard_66
- Track 18 : Tipton_66
- Track 19 : Giantsbane_66
- Track 20 : LilHuddy_67
- Track 21 : Phaby_68
- Track 22 : Loretta_66, Ingrid_69
- Track 23 : Anandi_69
- Track 24 : Caterpillar_62, MediumFry_63
- Track 25 : Makai_66, Truckee_64
- Track 26 : Zippen_68
- Track 27 : Inked_68

Summary of Final Annotations (See graph section above for start numbers):

The start number called the most often in the published annotations is 9, it was called in 32 of the 32 non-draft genes in the pham.

Genes that call this "Most Annotated" start:

- Acai_62, Anandi_69, AreFloNak_65, Bouchard_66, Breylor17_62, Brunswick_63, CapnMurica_60, CastorTray_66, Caterpillar_62, Chlochlo_66, Darby_61, DevitoJr_62, ElephantMan_62, Giantsbane_66, Gordon_60, Ingrid_69, Inked_68, LilHuddy_67, Loretta_66, LucySwiss_62, Makai_66, MediumFry_63, MiniBagel_62, Nightmare_64, Niktson_62, Nivinsha_64, Phaby_68, ScienceWizSam_63, Shepard_68, Synepsis_61, Teacup_63, Tenno_63, Tokki_71, Truckee_64, Trustiboi_62, Westerlin_62, Zippen_68,

Genes that have the "Most Annotated" start but do not call it:

- Dinallo_61, Tipton_66,

Genes that do not have the "Most Annotated" start:

-

Summary by start number:

Start 9:

- Found in 39 of 39 (100.0%) of genes in pham
- Manual Annotations of this start: 32 of 32
- Called 94.9% of time when present
- Phage (with cluster) where this start called: Acai_62 (AU1), Anandi_69 (AU4), AreFloNak_65 (AU1), Bouchard_66 (AU2), Breylor17_62 (AU1), Brunswick_63 (AU1), CapnMurica_60 (AU1), CastorTray_66 (AU1), Caterpillar_62 (AU4), Chlochlo_66 (AU2), Darby_61 (AU1), DevitoJr_62 (AU1), ElephantMan_62 (AU1), Giantsbane_66 (AU2), Gordon_60 (AU1), Ingrid_69 (AU3), Inked_68 (AU7), LilHuddy_67 (AU2), Loretta_66 (AU3), LucySwiss_62 (AU1), Makai_66 (AU5), MediumFry_63 (AU4), MiniBagel_62 (AU1), Nightmare_64 (AU1), Niktson_62 (AU1), Nivinsha_64 (AU1), Phaby_68 (AU2), ScienceWizSam_63 (AU1), Shepard_68 (AU2), Synepsis_61 (AU1), Teacup_63 (AU1), Tenno_63 (AU1), Tokki_71 (AU2), Truckee_64 (AU5), Trustiboi_62 (AU1), Westerlin_62 (AU1), Zippen_68 (AU7),

Start 12:

- Found in 16 of 39 (41.0%) of genes in pham
- No Manual Annotations of this start.
- Called 12.5% of time when present
- Phage (with cluster) where this start called: Dinallo_61 (AU1), Tipton_66 (AU2),

Summary by clusters:

There are 6 clusters represented in this pham: AU1, AU3, AU2, AU5, AU4, AU7,

Info for manual annotations of cluster AU1:

- Start number 9 was manually annotated 17 times for cluster AU1.

Info for manual annotations of cluster AU2:

- Start number 9 was manually annotated 7 times for cluster AU2.

Info for manual annotations of cluster AU3:

- Start number 9 was manually annotated 2 times for cluster AU3.

Info for manual annotations of cluster AU4:

- Start number 9 was manually annotated 2 times for cluster AU4.

Info for manual annotations of cluster AU5:

•Start number 9 was manually annotated 2 times for cluster AU5.

Info for manual annotations of cluster AU7:

•Start number 9 was manually annotated 2 times for cluster AU7.

Gene Information:

Gene: Acai_62 Start: 44324, Stop: 44614, Start Num: 9

Candidate Starts for Acai_62:

(Start: 9 @44324 has 32 MA's), (14, 44423), (17, 44462), (18, 44516), (19, 44525), (20, 44597),

Gene: Anandi_69 Start: 44977, Stop: 45264, Start Num: 9

Candidate Starts for Anandi_69:

(3, 44878), (5, 44899), (7, 44929), (Start: 9 @44977 has 32 MA's), (15, 45103), (17, 45112), (19, 45175),

Gene: AreFloNak_65 Start: 44289, Stop: 44579, Start Num: 9

Candidate Starts for AreFloNak_65:

(Start: 9 @44289 has 32 MA's), (12, 44352), (16, 44421), (18, 44481), (19, 44490), (21, 44565),

Gene: Bouchard_66 Start: 44943, Stop: 45233, Start Num: 9

Candidate Starts for Bouchard_66:

(7, 44892), (8, 44904), (Start: 9 @44943 has 32 MA's), (12, 45006), (19, 45144), (21, 45219),

Gene: Breylor17_62 Start: 44864, Stop: 45154, Start Num: 9

Candidate Starts for Breylor17_62:

(Start: 9 @44864 has 32 MA's), (11, 44924), (19, 45065), (21, 45140),

Gene: Brunswick_63 Start: 44167, Stop: 44457, Start Num: 9

Candidate Starts for Brunswick_63:

(Start: 9 @44167 has 32 MA's), (14, 44266), (17, 44305), (18, 44359), (19, 44368), (20, 44440),

Gene: CapnMurica_60 Start: 45050, Stop: 45340, Start Num: 9

Candidate Starts for CapnMurica_60:

(1, 44933), (7, 45002), (Start: 9 @45050 has 32 MA's), (12, 45113), (17, 45188), (19, 45251), (20, 45323),

Gene: CastorTray_66 Start: 45053, Stop: 45343, Start Num: 9

Candidate Starts for CastorTray_66:

(Start: 9 @45053 has 32 MA's), (11, 45113), (19, 45254), (21, 45329),

Gene: Caterpillar_62 Start: 43978, Stop: 44268, Start Num: 9

Candidate Starts for Caterpillar_62:

(6, 43921), (7, 43930), (Start: 9 @43978 has 32 MA's), (11, 44038), (14, 44077), (16, 44110), (19, 44179), (20, 44251), (21, 44254),

Gene: Chlochlo_66 Start: 44469, Stop: 44759, Start Num: 9

Candidate Starts for Chlochlo_66:

(7, 44418), (8, 44430), (Start: 9 @44469 has 32 MA's), (12, 44532), (19, 44670), (20, 44742), (21, 44745),

Gene: Darby_61 Start: 44099, Stop: 44389, Start Num: 9

Candidate Starts for Darby_61:

(Start: 9 @44099 has 32 MA's), (11, 44159), (12, 44162), (19, 44300), (21, 44375),

Gene: DevitoJr_62 Start: 44485, Stop: 44775, Start Num: 9

Candidate Starts for DevitoJr_62:

(Start: 9 @44485 has 32 MA's), (11, 44545), (12, 44548), (16, 44617), (19, 44686), (21, 44761),

Gene: Dinallo_61 Start: 45423, Stop: 45650, Start Num: 12

Candidate Starts for Dinallo_61:

(Start: 9 @45360 has 32 MA's), (12, 45423), (17, 45498), (19, 45561), (21, 45636),

Gene: ElephantMan_62 Start: 44797, Stop: 45087, Start Num: 9

Candidate Starts for ElephantMan_62:

(Start: 9 @44797 has 32 MA's), (14, 44896), (17, 44935), (18, 44989), (19, 44998), (20, 45070),

Gene: Giantsbane_66 Start: 43674, Stop: 43961, Start Num: 9

Candidate Starts for Giantsbane_66:

(7, 43623), (Start: 9 @43674 has 32 MA's), (12, 43734), (19, 43872), (20, 43944), (21, 43947),

Gene: Gordon_60 Start: 44977, Stop: 45267, Start Num: 9

Candidate Starts for Gordon_60:

(Start: 9 @44977 has 32 MA's), (11, 45037), (13, 45052), (16, 45109), (19, 45178), (21, 45253),

Gene: Ingrid_69 Start: 44855, Stop: 45154, Start Num: 9

Candidate Starts for Ingrid_69:

(2, 44753), (Start: 9 @44855 has 32 MA's), (17, 45002), (19, 45065), (20, 45137), (21, 45140),

Gene: Inked_68 Start: 45528, Stop: 45815, Start Num: 9

Candidate Starts for Inked_68:

(4, 45441), (5, 45450), (7, 45480), (Start: 9 @45528 has 32 MA's), (15, 45654), (19, 45726), (21, 45801),

Gene: LilHuddy_67 Start: 44781, Stop: 45074, Start Num: 9

Candidate Starts for LilHuddy_67:

(8, 44742), (Start: 9 @44781 has 32 MA's), (17, 44922), (19, 44985),

Gene: Loretta_66 Start: 44855, Stop: 45154, Start Num: 9

Candidate Starts for Loretta_66:

(2, 44753), (Start: 9 @44855 has 32 MA's), (17, 45002), (19, 45065), (20, 45137), (21, 45140),

Gene: LucySwiss_62 Start: 43948, Stop: 44238, Start Num: 9

Candidate Starts for LucySwiss_62:

(Start: 9 @43948 has 32 MA's), (14, 44047), (17, 44086), (18, 44140), (19, 44149), (20, 44221),

Gene: Makai_66 Start: 44929, Stop: 45228, Start Num: 9

Candidate Starts for Makai_66:

(Start: 9 @44929 has 32 MA's), (17, 45076), (19, 45139), (20, 45211), (21, 45214),

Gene: MediumFry_63 Start: 44274, Stop: 44564, Start Num: 9

Candidate Starts for MediumFry_63:

(6, 44217), (7, 44226), (Start: 9 @44274 has 32 MA's), (11, 44334), (14, 44373), (16, 44406), (19, 44475), (20, 44547), (21, 44550),

Gene: MiniBagel_62 Start: 45041, Stop: 45331, Start Num: 9

Candidate Starts for MiniBagel_62:

(Start: 9 @45041 has 32 MA's), (12, 45104), (17, 45179), (19, 45242), (21, 45317),

Gene: Nightmare_64 Start: 45339, Stop: 45629, Start Num: 9

Candidate Starts for Nightmare_64:

(Start: 9 @45339 has 32 MA's), (12, 45402), (19, 45540), (21, 45615),

Gene: Niktson_62 Start: 44797, Stop: 45087, Start Num: 9

Candidate Starts for Niktson_62:

(Start: 9 @44797 has 32 MA's), (14, 44896), (17, 44935), (18, 44989), (19, 44998), (20, 45070),

Gene: Nivinsha_64 Start: 44289, Stop: 44579, Start Num: 9

Candidate Starts for Nivinsha_64:

(Start: 9 @44289 has 32 MA's), (12, 44352), (16, 44421), (18, 44481), (19, 44490), (21, 44565),

Gene: Phaby_68 Start: 45345, Stop: 45635, Start Num: 9

Candidate Starts for Phaby_68:

(7, 45294), (8, 45306), (Start: 9 @45345 has 32 MA's), (17, 45483), (19, 45546), (20, 45618), (21, 45621),

Gene: ScienceWizSam_63 Start: 44451, Stop: 44792, Start Num: 9

Candidate Starts for ScienceWizSam_63:

(Start: 9 @44451 has 32 MA's), (11, 44511), (16, 44583), (19, 44652), (21, 44727), (22, 44775),

Gene: Shepard_68 Start: 44640, Stop: 44933, Start Num: 9

Candidate Starts for Shepard_68:

(7, 44589), (8, 44601), (Start: 9 @44640 has 32 MA's), (17, 44781), (19, 44844),

Gene: Synopsis_61 Start: 44455, Stop: 44742, Start Num: 9

Candidate Starts for Synopsis_61:

(Start: 9 @44455 has 32 MA's), (11, 44512), (12, 44515), (19, 44653), (21, 44728),

Gene: Teacup_63 Start: 44876, Stop: 45166, Start Num: 9

Candidate Starts for Teacup_63:

(Start: 9 @44876 has 32 MA's), (14, 44975), (17, 45014), (18, 45068), (19, 45077), (20, 45149),

Gene: Tenno_63 Start: 45105, Stop: 45395, Start Num: 9

Candidate Starts for Tenno_63:

(7, 45057), (Start: 9 @45105 has 32 MA's), (12, 45168), (17, 45243), (19, 45306), (21, 45381),

Gene: Tipton_66 Start: 45026, Stop: 45253, Start Num: 12

Candidate Starts for Tipton_66:

(7, 44912), (8, 44924), (Start: 9 @44963 has 32 MA's), (12, 45026), (19, 45164), (20, 45236), (21, 45239),

Gene: Tokki_71 Start: 44994, Stop: 45284, Start Num: 9

Candidate Starts for Tokki_71:

(7, 44943), (8, 44955), (Start: 9 @44994 has 32 MA's), (19, 45195), (20, 45267), (21, 45270),

Gene: Truckee_64 Start: 44713, Stop: 45012, Start Num: 9

Candidate Starts for Truckee_64:

(Start: 9 @44713 has 32 MA's), (17, 44860), (19, 44923), (20, 44995), (21, 44998),

Gene: Trustiboi_62 Start: 44710, Stop: 44997, Start Num: 9

Candidate Starts for Trustiboi_62:

(Start: 9 @44710 has 32 MA's), (11, 44767), (12, 44770), (19, 44908), (21, 44983),

Gene: Westerlin_62 Start: 45796, Stop: 46086, Start Num: 9

Candidate Starts for Westerlin_62:

(Start: 9 @45796 has 32 MA's), (11, 45856), (12, 45859), (13, 45871), (16, 45928), (19, 45997), (21, 46072),

Gene: Zippen_68 Start: 45396, Stop: 45683, Start Num: 9

Candidate Starts for Zippen_68:

(4, 45309), (5, 45318), (7, 45348), (Start: 9 @45396 has 32 MA's), (10, 45405), (15, 45522), (19, 45594), (21, 45669),