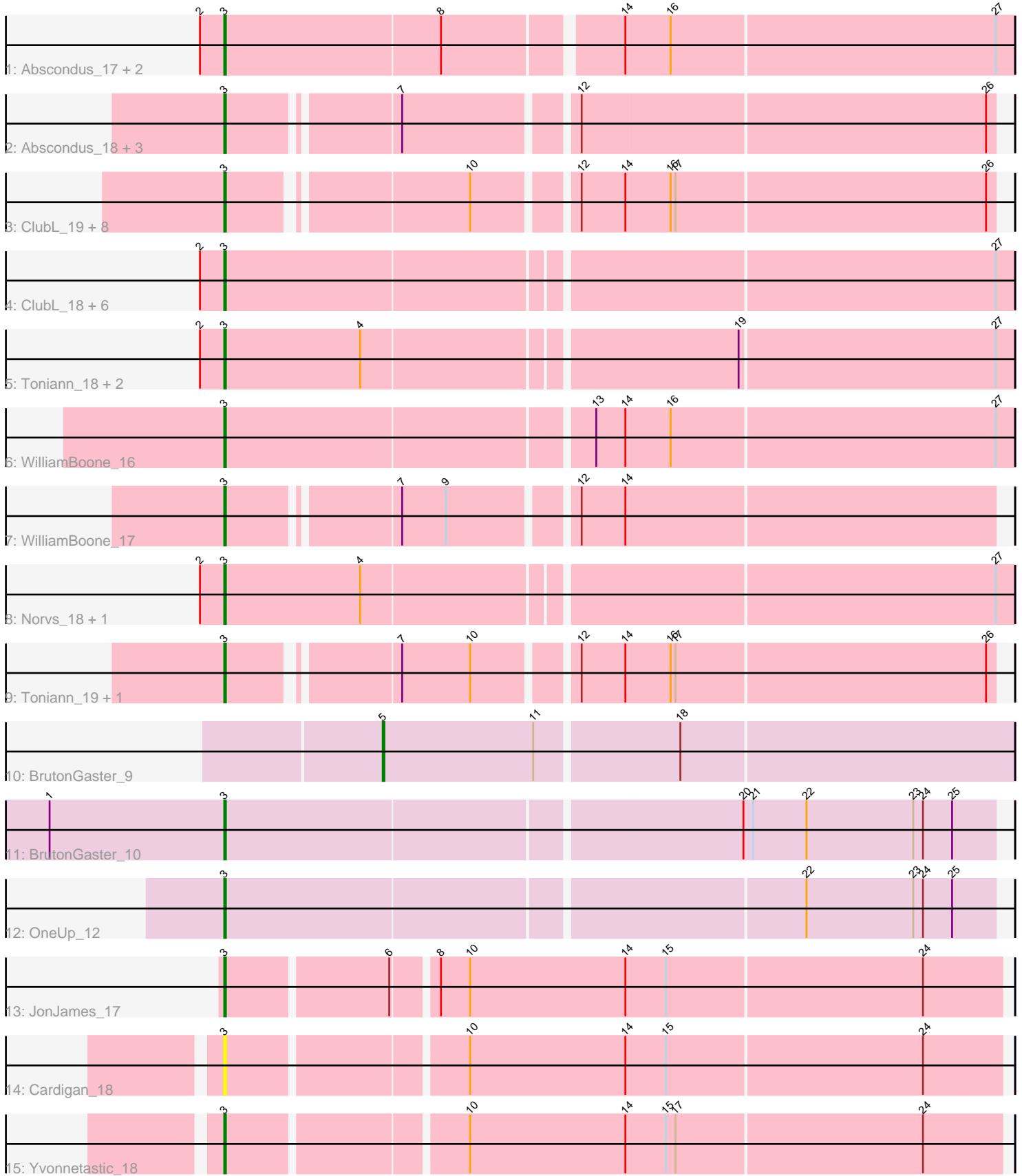


Pham 292966



Note: Tracks are now grouped by subcluster and scaled. Switching in subcluster is indicated by changes in track color. Track scale is now set by default to display the region 30 bp upstream of start 1 to 30 bp downstream of the last possible start. If this default region is judged to be packed too tightly with annotated starts, the track will be further scaled to only show that region of the ORF with annotated starts. This action will be indicated by adding "Zoomed" to the title. For starts, yellow indicates the location of called starts comprised solely of Glimmer/GeneMark auto-annotations, green indicates the location of called starts with at least 1 manual gene annotation.

Pham 292966 Report

This analysis was run 04/18/26 on database version 643.

Pham number 292966 has 38 members, 3 are drafts.

Phages represented in each track:

- Track 1 : Abscondus_17, Dusty_17, Culver_17
- Track 2 : Abscondus_18, PhinkBoden_20, Dusty_18, Culver_18
- Track 3 : ClubL_19, Aphelion_19, Geeche_18, Norvs_19, Smoothie_19, Bachita_20, Cucurbita_18, Miskis_17, Lozinak_19
- Track 4 : ClubL_18, Aphelion_18, Bachita_19, Smoothie_18, Cucurbita_17, Lozinak_18, Miskis_16
- Track 5 : Toniann_18, Engineer_18, PhinkBoden_19
- Track 6 : WilliamBoone_16
- Track 7 : WilliamBoone_17
- Track 8 : Norvs_18, Geeche_17
- Track 9 : Toniann_19, Engineer_19
- Track 10 : BrutonGaster_9
- Track 11 : BrutonGaster_10
- Track 12 : OneUp_12
- Track 13 : JonJames_17
- Track 14 : Cardigan_18
- Track 15 : Yvonnetastic_18

Summary of Final Annotations (See graph section above for start numbers):

The start number called the most often in the published annotations is 3, it was called in 34 of the 35 non-draft genes in the pham.

Genes that call this "Most Annotated" start:

- Abscondus_17, Abscondus_18, Aphelion_18, Aphelion_19, Bachita_19, Bachita_20, BrutonGaster_10, Cardigan_18, ClubL_18, ClubL_19, Cucurbita_17, Cucurbita_18, Culver_17, Culver_18, Dusty_17, Dusty_18, Engineer_18, Engineer_19, Geeche_17, Geeche_18, JonJames_17, Lozinak_18, Lozinak_19, Miskis_16, Miskis_17, Norvs_18, Norvs_19, OneUp_12, PhinkBoden_19, PhinkBoden_20, Smoothie_18, Smoothie_19, Toniann_18, Toniann_19, WilliamBoone_16, WilliamBoone_17, Yvonnetastic_18,

Genes that have the "Most Annotated" start but do not call it:

-

Genes that do not have the "Most Annotated" start:

- BrutonGaster_9,

Summary by start number:

Start 3:

- Found in 37 of 38 (97.4%) of genes in pham
- Manual Annotations of this start: 34 of 35
- Called 100.0% of time when present
- Phage (with cluster) where this start called: Abscondus_17 (CQ1), Abscondus_18 (CQ1), Aphelion_18 (CQ1), Aphelion_19 (CQ1), Bachita_19 (CQ1), Bachita_20 (CQ1), BrutonGaster_10 (CQ2), Cardigan_18 (DD), ClubL_18 (CQ1), ClubL_19 (CQ1), Cucurbita_17 (CQ1), Cucurbita_18 (CQ1), Culver_17 (CQ1), Culver_18 (CQ1), Dusty_17 (CQ1), Dusty_18 (CQ1), Engineer_18 (CQ1), Engineer_19 (CQ1), Geeche_17 (CQ1), Geeche_18 (CQ1), JonJames_17 (DD), Lozinak_18 (CQ1), Lozinak_19 (CQ1), Miskis_16 (CQ1), Miskis_17 (CQ1), Norvs_18 (CQ1), Norvs_19 (CQ1), OneUp_12 (CQ2), PhinkBoden_19 (CQ1), PhinkBoden_20 (CQ1), Smoothie_18 (CQ1), Smoothie_19 (CQ1), Toniann_18 (CQ1), Toniann_19 (CQ1), WilliamBoone_16 (CQ1), WilliamBoone_17 (CQ1), Yvonnetastic_18 (DD),

Start 5:

- Found in 1 of 38 (2.6%) of genes in pham
- Manual Annotations of this start: 1 of 35
- Called 100.0% of time when present
- Phage (with cluster) where this start called: BrutonGaster_9 (CQ2),

Summary by clusters:

There are 3 clusters represented in this pham: CQ2, DD, CQ1,

Info for manual annotations of cluster CQ1:

- Start number 3 was manually annotated 30 times for cluster CQ1.

Info for manual annotations of cluster CQ2:

- Start number 3 was manually annotated 2 times for cluster CQ2.
- Start number 5 was manually annotated 1 time for cluster CQ2.

Info for manual annotations of cluster DD:

- Start number 3 was manually annotated 2 times for cluster DD.

Gene Information:

Gene: Abscondus_17 Start: 4744, Stop: 5214, Start Num: 3

Candidate Starts for Abscondus_17:

(2, 4729), (Start: 3 @4744 has 34 MA's), (8, 4876), (14, 4978), (16, 5005), (27, 5203),

Gene: Abscondus_18 Start: 5211, Stop: 5657, Start Num: 3

Candidate Starts for Abscondus_18:

(Start: 3 @5211 has 34 MA's), (7, 5307), (12, 5406), (26, 5652),

Gene: Aphelion_18 Start: 4905, Stop: 5375, Start Num: 3
Candidate Starts for Aphelion_18:
(2, 4890), (Start: 3 @4905 has 34 MA's), (27, 5364),

Gene: Aphelion_19 Start: 5372, Stop: 5815, Start Num: 3
Candidate Starts for Aphelion_19:
(Start: 3 @5372 has 34 MA's), (10, 5507), (12, 5564), (14, 5591), (16, 5618), (17, 5621), (26, 5810),

Gene: Bachita_19 Start: 5417, Stop: 5887, Start Num: 3
Candidate Starts for Bachita_19:
(2, 5402), (Start: 3 @5417 has 34 MA's), (27, 5876),

Gene: Bachita_20 Start: 5884, Stop: 6327, Start Num: 3
Candidate Starts for Bachita_20:
(Start: 3 @5884 has 34 MA's), (10, 6019), (12, 6076), (14, 6103), (16, 6130), (17, 6133), (26, 6322),

Gene: BrutonGaster_9 Start: 2765, Stop: 3145, Start Num: 5
Candidate Starts for BrutonGaster_9:
(Start: 5 @2765 has 1 MA's), (11, 2858), (18, 2942),

Gene: BrutonGaster_10 Start: 3142, Stop: 3606, Start Num: 3
Candidate Starts for BrutonGaster_10:
(1, 3034), (Start: 3 @3142 has 34 MA's), (20, 3451), (21, 3457), (22, 3490), (23, 3556), (24, 3562), (25, 3580),

Gene: Cardigan_18 Start: 5476, Stop: 5937, Start Num: 3
Candidate Starts for Cardigan_18:
(Start: 3 @5476 has 34 MA's), (10, 5614), (14, 5710), (15, 5734), (24, 5890),

Gene: ClubL_19 Start: 5384, Stop: 5827, Start Num: 3
Candidate Starts for ClubL_19:
(Start: 3 @5384 has 34 MA's), (10, 5519), (12, 5576), (14, 5603), (16, 5630), (17, 5633), (26, 5822),

Gene: ClubL_18 Start: 4917, Stop: 5387, Start Num: 3
Candidate Starts for ClubL_18:
(2, 4902), (Start: 3 @4917 has 34 MA's), (27, 5376),

Gene: Cucurbita_17 Start: 4917, Stop: 5387, Start Num: 3
Candidate Starts for Cucurbita_17:
(2, 4902), (Start: 3 @4917 has 34 MA's), (27, 5376),

Gene: Cucurbita_18 Start: 5384, Stop: 5827, Start Num: 3
Candidate Starts for Cucurbita_18:
(Start: 3 @5384 has 34 MA's), (10, 5519), (12, 5576), (14, 5603), (16, 5630), (17, 5633), (26, 5822),

Gene: Culver_17 Start: 4744, Stop: 5214, Start Num: 3
Candidate Starts for Culver_17:
(2, 4729), (Start: 3 @4744 has 34 MA's), (8, 4876), (14, 4978), (16, 5005), (27, 5203),

Gene: Culver_18 Start: 5211, Stop: 5657, Start Num: 3
Candidate Starts for Culver_18:
(Start: 3 @5211 has 34 MA's), (7, 5307), (12, 5406), (26, 5652),

Gene: Dusty_18 Start: 5211, Stop: 5657, Start Num: 3
Candidate Starts for Dusty_18:
(Start: 3 @5211 has 34 MA's), (7, 5307), (12, 5406), (26, 5652),

Gene: Dusty_17 Start: 4744, Stop: 5214, Start Num: 3
Candidate Starts for Dusty_17:
(2, 4729), (Start: 3 @4744 has 34 MA's), (8, 4876), (14, 4978), (16, 5005), (27, 5203),

Gene: Engineer_19 Start: 5375, Stop: 5818, Start Num: 3
Candidate Starts for Engineer_19:
(Start: 3 @5375 has 34 MA's), (7, 5468), (10, 5510), (12, 5567), (14, 5594), (16, 5621), (17, 5624), (26, 5813),

Gene: Engineer_18 Start: 4908, Stop: 5378, Start Num: 3
Candidate Starts for Engineer_18:
(2, 4893), (Start: 3 @4908 has 34 MA's), (4, 4992), (19, 5211), (27, 5367),

Gene: Geeche_18 Start: 5192, Stop: 5635, Start Num: 3
Candidate Starts for Geeche_18:
(Start: 3 @5192 has 34 MA's), (10, 5327), (12, 5384), (14, 5411), (16, 5438), (17, 5441), (26, 5630),

Gene: Geeche_17 Start: 4725, Stop: 5195, Start Num: 3
Candidate Starts for Geeche_17:
(2, 4710), (Start: 3 @4725 has 34 MA's), (4, 4809), (27, 5184),

Gene: JonJames_17 Start: 5613, Stop: 6074, Start Num: 3
Candidate Starts for JonJames_17:
(Start: 3 @5613 has 34 MA's), (6, 5709), (8, 5733), (10, 5751), (14, 5847), (15, 5871), (24, 6027),

Gene: Lozinak_18 Start: 4908, Stop: 5378, Start Num: 3
Candidate Starts for Lozinak_18:
(2, 4893), (Start: 3 @4908 has 34 MA's), (27, 5367),

Gene: Lozinak_19 Start: 5375, Stop: 5818, Start Num: 3
Candidate Starts for Lozinak_19:
(Start: 3 @5375 has 34 MA's), (10, 5510), (12, 5567), (14, 5594), (16, 5621), (17, 5624), (26, 5813),

Gene: Miskis_16 Start: 4905, Stop: 5375, Start Num: 3
Candidate Starts for Miskis_16:
(2, 4890), (Start: 3 @4905 has 34 MA's), (27, 5364),

Gene: Miskis_17 Start: 5372, Stop: 5815, Start Num: 3
Candidate Starts for Miskis_17:
(Start: 3 @5372 has 34 MA's), (10, 5507), (12, 5564), (14, 5591), (16, 5618), (17, 5621), (26, 5810),

Gene: Norvs_19 Start: 5375, Stop: 5818, Start Num: 3
Candidate Starts for Norvs_19:
(Start: 3 @5375 has 34 MA's), (10, 5510), (12, 5567), (14, 5594), (16, 5621), (17, 5624), (26, 5813),

Gene: Norvs_18 Start: 4908, Stop: 5378, Start Num: 3
Candidate Starts for Norvs_18:
(2, 4893), (Start: 3 @4908 has 34 MA's), (4, 4992), (27, 5367),

Gene: OneUp_12 Start: 3597, Stop: 4058, Start Num: 3
Candidate Starts for OneUp_12:
(Start: 3 @3597 has 34 MA's), (22, 3942), (23, 4008), (24, 4014), (25, 4032),

Gene: PhinkBoden_20 Start: 5870, Stop: 6316, Start Num: 3
Candidate Starts for PhinkBoden_20:
(Start: 3 @5870 has 34 MA's), (7, 5966), (12, 6065), (26, 6311),

Gene: PhinkBoden_19 Start: 5403, Stop: 5873, Start Num: 3
Candidate Starts for PhinkBoden_19:
(2, 5388), (Start: 3 @5403 has 34 MA's), (4, 5487), (19, 5706), (27, 5862),

Gene: Smoothie_18 Start: 4908, Stop: 5378, Start Num: 3
Candidate Starts for Smoothie_18:
(2, 4893), (Start: 3 @4908 has 34 MA's), (27, 5367),

Gene: Smoothie_19 Start: 5375, Stop: 5818, Start Num: 3
Candidate Starts for Smoothie_19:
(Start: 3 @5375 has 34 MA's), (10, 5510), (12, 5567), (14, 5594), (16, 5621), (17, 5624), (26, 5813),

Gene: Toniann_18 Start: 4908, Stop: 5378, Start Num: 3
Candidate Starts for Toniann_18:
(2, 4893), (Start: 3 @4908 has 34 MA's), (4, 4992), (19, 5211), (27, 5367),

Gene: Toniann_19 Start: 5375, Stop: 5818, Start Num: 3
Candidate Starts for Toniann_19:
(Start: 3 @5375 has 34 MA's), (7, 5468), (10, 5510), (12, 5567), (14, 5594), (16, 5621), (17, 5624), (26, 5813),

Gene: WilliamBoone_16 Start: 4437, Stop: 4910, Start Num: 3
Candidate Starts for WilliamBoone_16:
(Start: 3 @4437 has 34 MA's), (13, 4656), (14, 4674), (16, 4701), (27, 4899),

Gene: WilliamBoone_17 Start: 4907, Stop: 5353, Start Num: 3
Candidate Starts for WilliamBoone_17:
(Start: 3 @4907 has 34 MA's), (7, 5003), (9, 5030), (12, 5102), (14, 5129),

Gene: Yvonnetastic_18 Start: 5218, Stop: 5679, Start Num: 3
Candidate Starts for Yvonnetastic_18:
(Start: 3 @5218 has 34 MA's), (10, 5356), (14, 5452), (15, 5476), (17, 5482), (24, 5632),