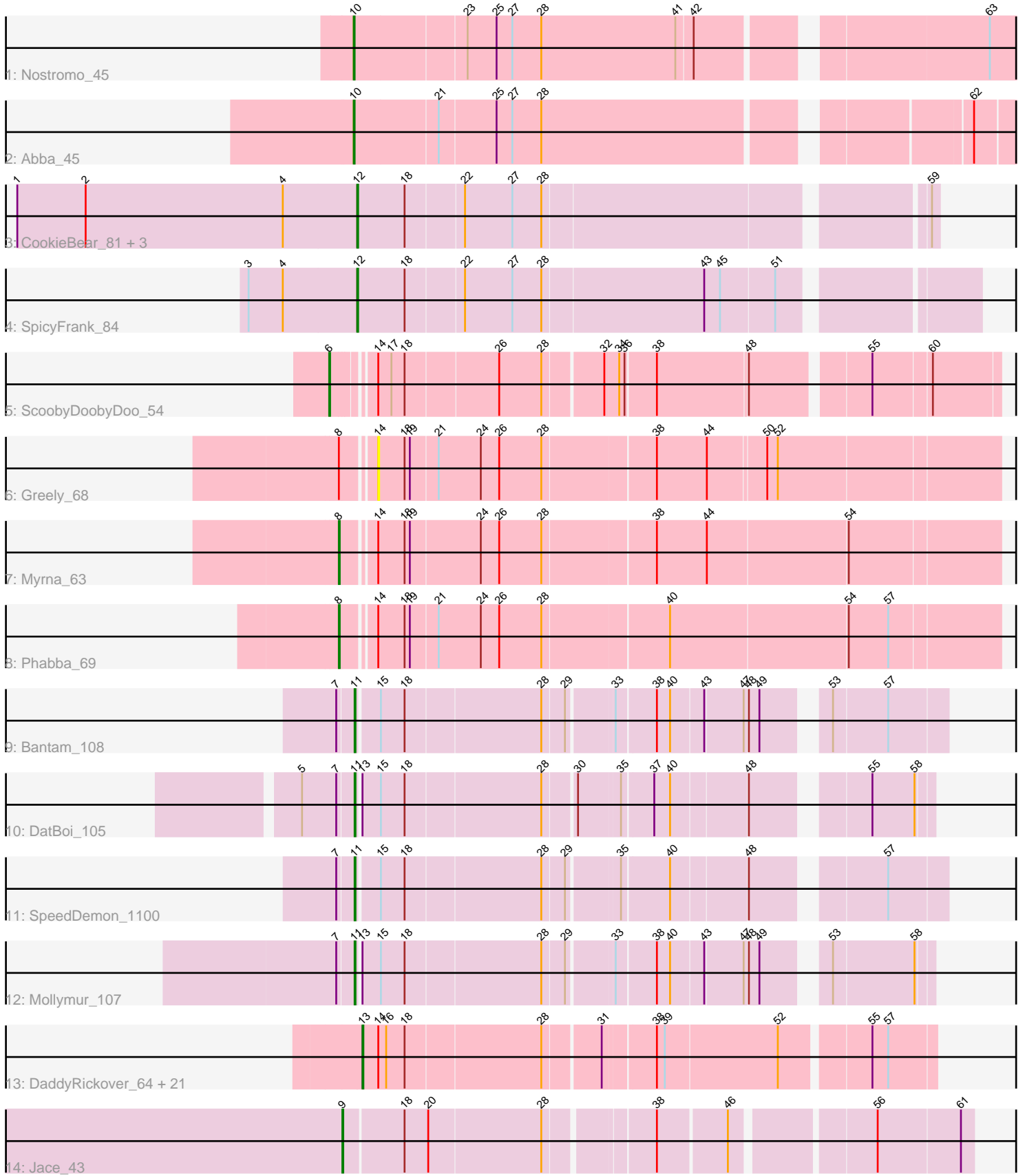


Pham 292973



Note: Tracks are now grouped by subcluster and scaled. Switching in subcluster is indicated by changes in track color. Track scale is now set by default to display the region 30 bp upstream of start 1 to 30 bp downstream of the last possible start. If this default region is judged to be packed too tightly with annotated starts, the track will be further scaled to only show that region of the ORF with annotated starts. This action will be indicated by adding "Zoomed" to the title. For starts, yellow indicates the location of called starts comprised solely of Glimmer/GeneMark auto-annotations, green indicates the location of called starts with at least 1 manual gene annotation.

Pham 292973 Report

This analysis was run 04/18/26 on database version 643.

Pham number 292973 has 38 members, 3 are drafts.

Phages represented in each track:

- Track 1 : Nostromo_45
- Track 2 : Abba_45
- Track 3 : CookieBear_81, SonDevVon_90, Sakai_79, Gorpy_80
- Track 4 : SpicyFrank_84
- Track 5 : ScoobyDoobyDoo_54
- Track 6 : Greely_68
- Track 7 : Myrna_63
- Track 8 : Phabba_69
- Track 9 : Bantam_108
- Track 10 : DatBoi_105
- Track 11 : SpeedDemon_1100
- Track 12 : Mollymur_107
- Track 13 : DaddyRickover_64, Leperchaun_57, Dorothy_63, Scottish_63, Sassafras_63, Polka14_63, Daenerys_59, KingMidas_64, Empress_63, Deb65_59, IbOuu_64, Geralt_59, RitaG_60, Nimbo_58, Stap_62, OldBen_62, JoeyJr_60, Inventum_60, PHappiness_60, RedBird_63, Spoonbill_62, BodEinwohner17_65
- Track 14 : Jace_43

Summary of Final Annotations (See graph section above for start numbers):

The start number called the most often in the published annotations is 13, it was called in 21 of the 35 non-draft genes in the pham.

Genes that call this "Most Annotated" start:

- BodEinwohner17_65, DaddyRickover_64, Daenerys_59, Deb65_59, Dorothy_63, Empress_63, Geralt_59, IbOuu_64, Inventum_60, JoeyJr_60, KingMidas_64, Leperchaun_57, Nimbo_58, OldBen_62, PHappiness_60, Polka14_63, RedBird_63, RitaG_60, Sassafras_63, Scottish_63, Spoonbill_62, Stap_62,

Genes that have the "Most Annotated" start but do not call it:

- DatBoi_105, Mollymur_107,

Genes that do not have the "Most Annotated" start:

- Abba_45, Bantam_108, CookieBear_81, Gorpy_80, Greely_68, Jace_43, Myrna_63, Nostromo_45, Phabba_69, Sakai_79, ScoobyDoobyDoo_54, SonDevVon_90, SpeedDemon_1100, SpicyFrank_84,

Summary by start number:

Start 6:

- Found in 1 of 38 (2.6%) of genes in pham
- Manual Annotations of this start: 1 of 35
- Called 100.0% of time when present
- Phage (with cluster) where this start called: ScoobyDoobyDoo_54 (C2),

Start 8:

- Found in 3 of 38 (7.9%) of genes in pham
- Manual Annotations of this start: 2 of 35
- Called 66.7% of time when present
- Phage (with cluster) where this start called: Myrna_63 (C2), Phabba_69 (C2),

Start 9:

- Found in 1 of 38 (2.6%) of genes in pham
- Manual Annotations of this start: 1 of 35
- Called 100.0% of time when present
- Phage (with cluster) where this start called: Jace_43 (singleton),

Start 10:

- Found in 2 of 38 (5.3%) of genes in pham
- Manual Annotations of this start: 2 of 35
- Called 100.0% of time when present
- Phage (with cluster) where this start called: Abba_45 (AO3), Nostromo_45 (AO3),

Start 11:

- Found in 4 of 38 (10.5%) of genes in pham
- Manual Annotations of this start: 4 of 35
- Called 100.0% of time when present
- Phage (with cluster) where this start called: Bantam_108 (DL), DatBoi_105 (DL), Mollymur_107 (DL), SpeedDemon_1100 (DL),

Start 12:

- Found in 5 of 38 (13.2%) of genes in pham
- Manual Annotations of this start: 4 of 35
- Called 100.0% of time when present
- Phage (with cluster) where this start called: CookieBear_81 (AY), Gorpy_80 (AY), Sakai_79 (AY), SonDevVon_90 (AY), SpicyFrank_84 (AY),

Start 13:

- Found in 24 of 38 (63.2%) of genes in pham
- Manual Annotations of this start: 21 of 35
- Called 91.7% of time when present
- Phage (with cluster) where this start called: BodEinwohner17_65 (F1), DaddyRickover_64 (F1), Daenerys_59 (F1), Deb65_59 (F1), Dorothy_63 (F1), Empress_63 (F1), Geralt_59 (F1), IbOuu_64 (F1), Inventum_60 (F1), JoeyJr_60 (F1), KingMidas_64 (F1), Leperchaun_57 (F1), Nimbo_58 (F1), OldBen_62 (F1), PHappiness_60 (F1), Polka14_63 (F1), RedBird_63 (F1), RitaG_60 (F1),

Sassafras_63 (F1), Scottish_63 (F1), Spoonbill_62 (F1), Stap_62 (F1),

Start 14:

- Found in 26 of 38 (68.4%) of genes in pham
- No Manual Annotations of this start.
- Called 3.8% of time when present
- Phage (with cluster) where this start called: Greely_68 (C2),

Summary by clusters:

There are 6 clusters represented in this pham: F1, DL, singleton, AO3, AY, C2,

Info for manual annotations of cluster AO3:

- Start number 10 was manually annotated 2 times for cluster AO3.

Info for manual annotations of cluster AY:

- Start number 12 was manually annotated 4 times for cluster AY.

Info for manual annotations of cluster C2:

- Start number 6 was manually annotated 1 time for cluster C2.
- Start number 8 was manually annotated 2 times for cluster C2.

Info for manual annotations of cluster DL:

- Start number 11 was manually annotated 4 times for cluster DL.

Info for manual annotations of cluster F1:

- Start number 13 was manually annotated 21 times for cluster F1.

Gene Information:

Gene: Abba_45 Start: 33459, Stop: 34169, Start Num: 10

Candidate Starts for Abba_45:

(Start: 10 @33459 has 2 MA's), (21, 33552), (25, 33615), (27, 33633), (28, 33666), (62, 34110),

Gene: Bantam_108 Start: 69737, Stop: 70342, Start Num: 11

Candidate Starts for Bantam_108:

(7, 69719), (Start: 11 @69737 has 4 MA's), (15, 69761), (18, 69788), (28, 69938), (29, 69962), (33, 70010), (38, 70052), (40, 70067), (43, 70103), (47, 70145), (48, 70148), (49, 70160), (53, 70217), (57, 70277),

Gene: BodEinwohner17_65 Start: 41919, Stop: 42527, Start Num: 13

Candidate Starts for BodEinwohner17_65:

(Start: 13 @41919 has 21 MA's), (14, 41937), (16, 41946), (18, 41967), (28, 42117), (31, 42177), (38, 42231), (39, 42240), (52, 42366), (55, 42459), (57, 42477),

Gene: CookieBear_81 Start: 45964, Stop: 46581, Start Num: 12

Candidate Starts for CookieBear_81:

(1, 45577), (2, 45655), (4, 45880), (Start: 12 @45964 has 4 MA's), (18, 46018), (22, 46081), (27, 46135), (28, 46168), (59, 46573),

Gene: DaddyRickover_64 Start: 42482, Stop: 43090, Start Num: 13

Candidate Starts for DaddyRickover_64:

(Start: 13 @42482 has 21 MA's), (14, 42500), (16, 42509), (18, 42530), (28, 42680), (31, 42740), (38, 42794), (39, 42803), (52, 42929), (55, 43022), (57, 43040),

Gene: Daenerys_59 Start: 40724, Stop: 41332, Start Num: 13

Candidate Starts for Daenerys_59:

(Start: 13 @40724 has 21 MA's), (14, 40742), (16, 40751), (18, 40772), (28, 40922), (31, 40982), (38, 41036), (39, 41045), (52, 41171), (55, 41264), (57, 41282),

Gene: DatBoi_105 Start: 69050, Stop: 69637, Start Num: 11

Candidate Starts for DatBoi_105:

(5, 68993), (7, 69032), (Start: 11 @69050 has 4 MA's), (Start: 13 @69053 has 21 MA's), (15, 69074), (18, 69101), (28, 69251), (30, 69284), (35, 69329), (37, 69362), (40, 69380), (48, 69461), (55, 69572), (58, 69620),

Gene: Deb65_59 Start: 40694, Stop: 41302, Start Num: 13

Candidate Starts for Deb65_59:

(Start: 13 @40694 has 21 MA's), (14, 40712), (16, 40721), (18, 40742), (28, 40892), (31, 40952), (38, 41006), (39, 41015), (52, 41141), (55, 41234), (57, 41252),

Gene: Dorothy_63 Start: 41656, Stop: 42264, Start Num: 13

Candidate Starts for Dorothy_63:

(Start: 13 @41656 has 21 MA's), (14, 41674), (16, 41683), (18, 41704), (28, 41854), (31, 41914), (38, 41968), (39, 41977), (52, 42103), (55, 42196), (57, 42214),

Gene: Empress_63 Start: 42138, Stop: 42746, Start Num: 13

Candidate Starts for Empress_63:

(Start: 13 @42138 has 21 MA's), (14, 42156), (16, 42165), (18, 42186), (28, 42336), (31, 42396), (38, 42450), (39, 42459), (52, 42585), (55, 42678), (57, 42696),

Gene: Geralt_59 Start: 40693, Stop: 41301, Start Num: 13

Candidate Starts for Geralt_59:

(Start: 13 @40693 has 21 MA's), (14, 40711), (16, 40720), (18, 40741), (28, 40891), (31, 40951), (38, 41005), (39, 41014), (52, 41140), (55, 41233), (57, 41251),

Gene: Gorpy_80 Start: 47306, Stop: 47923, Start Num: 12

Candidate Starts for Gorpy_80:

(1, 46919), (2, 46997), (4, 47222), (Start: 12 @47306 has 4 MA's), (18, 47360), (22, 47423), (27, 47477), (28, 47510), (59, 47915),

Gene: Greely_68 Start: 24476, Stop: 25159, Start Num: 14

Candidate Starts for Greely_68:

(Start: 8 @24443 has 2 MA's), (14, 24476), (18, 24506), (19, 24512), (21, 24542), (24, 24590), (26, 24611), (28, 24659), (38, 24782), (44, 24839), (50, 24902), (52, 24914),

Gene: lbOuu_64 Start: 42743, Stop: 43351, Start Num: 13

Candidate Starts for lbOuu_64:

(Start: 13 @42743 has 21 MA's), (14, 42761), (16, 42770), (18, 42791), (28, 42941), (31, 43001), (38, 43055), (39, 43064), (52, 43190), (55, 43283), (57, 43301),

Gene: Inventum_60 Start: 41854, Stop: 42462, Start Num: 13

Candidate Starts for Inventum_60:

(Start: 13 @41854 has 21 MA's), (14, 41872), (16, 41881), (18, 41902), (28, 42052), (31, 42112), (38, 42166), (39, 42175), (52, 42301), (55, 42394), (57, 42412),

Gene: Jace_43 Start: 30595, Stop: 31251, Start Num: 9

Candidate Starts for Jace_43:

(Start: 9 @30595 has 1 MA's), (18, 30661), (20, 30688), (28, 30814), (38, 30925), (46, 31000), (56, 31147), (61, 31237),

Gene: JoeyJr_60 Start: 40892, Stop: 41500, Start Num: 13

Candidate Starts for JoeyJr_60:

(Start: 13 @40892 has 21 MA's), (14, 40910), (16, 40919), (18, 40940), (28, 41090), (31, 41150), (38, 41204), (39, 41213), (52, 41339), (55, 41432), (57, 41450),

Gene: KingMidas_64 Start: 42554, Stop: 43162, Start Num: 13

Candidate Starts for KingMidas_64:

(Start: 13 @42554 has 21 MA's), (14, 42572), (16, 42581), (18, 42602), (28, 42752), (31, 42812), (38, 42866), (39, 42875), (52, 43001), (55, 43094), (57, 43112),

Gene: Leperchaun_57 Start: 40122, Stop: 40730, Start Num: 13

Candidate Starts for Leperchaun_57:

(Start: 13 @40122 has 21 MA's), (14, 40140), (16, 40149), (18, 40170), (28, 40320), (31, 40380), (38, 40434), (39, 40443), (52, 40569), (55, 40662), (57, 40680),

Gene: Mollymur_107 Start: 70157, Stop: 70744, Start Num: 11

Candidate Starts for Mollymur_107:

(7, 70139), (Start: 11 @70157 has 4 MA's), (Start: 13 @70160 has 21 MA's), (15, 70181), (18, 70208), (28, 70358), (29, 70382), (33, 70430), (38, 70472), (40, 70487), (43, 70523), (47, 70565), (48, 70568), (49, 70580), (53, 70637), (58, 70727),

Gene: Myrna_63 Start: 23804, Stop: 24523, Start Num: 8

Candidate Starts for Myrna_63:

(Start: 8 @23804 has 2 MA's), (14, 23837), (18, 23867), (19, 23873), (24, 23951), (26, 23972), (28, 24020), (38, 24143), (44, 24200), (54, 24356),

Gene: Nimbo_58 Start: 40696, Stop: 41304, Start Num: 13

Candidate Starts for Nimbo_58:

(Start: 13 @40696 has 21 MA's), (14, 40714), (16, 40723), (18, 40744), (28, 40894), (31, 40954), (38, 41008), (39, 41017), (52, 41143), (55, 41236), (57, 41254),

Gene: Nostromo_45 Start: 34508, Stop: 35239, Start Num: 10

Candidate Starts for Nostromo_45:

(Start: 10 @34508 has 2 MA's), (23, 34631), (25, 34664), (27, 34682), (28, 34715), (41, 34868), (42, 34886), (63, 35183),

Gene: OldBen_62 Start: 42089, Stop: 42697, Start Num: 13

Candidate Starts for OldBen_62:

(Start: 13 @42089 has 21 MA's), (14, 42107), (16, 42116), (18, 42137), (28, 42287), (31, 42347), (38, 42401), (39, 42410), (52, 42536), (55, 42629), (57, 42647),

Gene: PHappiness_60 Start: 40668, Stop: 41276, Start Num: 13

Candidate Starts for PHappiness_60:

(Start: 13 @40668 has 21 MA's), (14, 40686), (16, 40695), (18, 40716), (28, 40866), (31, 40926), (38, 40980), (39, 40989), (52, 41115), (55, 41208), (57, 41226),

Gene: Phabba_69 Start: 24269, Stop: 24988, Start Num: 8

Candidate Starts for Phabba_69:

(Start: 8 @24269 has 2 MA's), (14, 24302), (18, 24332), (19, 24338), (21, 24368), (24, 24416), (26, 24437), (28, 24485), (40, 24623), (54, 24821), (57, 24866),

Gene: Polka14_63 Start: 41732, Stop: 42340, Start Num: 13

Candidate Starts for Polka14_63:

(Start: 13 @41732 has 21 MA's), (14, 41750), (16, 41759), (18, 41780), (28, 41930), (31, 41990), (38, 42044), (39, 42053), (52, 42179), (55, 42272), (57, 42290),

Gene: RedBird_63 Start: 41535, Stop: 42143, Start Num: 13

Candidate Starts for RedBird_63:

(Start: 13 @41535 has 21 MA's), (14, 41553), (16, 41562), (18, 41583), (28, 41733), (31, 41793), (38, 41847), (39, 41856), (52, 41982), (55, 42075), (57, 42093),

Gene: RitaG_60 Start: 41013, Stop: 41621, Start Num: 13

Candidate Starts for RitaG_60:

(Start: 13 @41013 has 21 MA's), (14, 41031), (16, 41040), (18, 41061), (28, 41211), (31, 41271), (38, 41325), (39, 41334), (52, 41460), (55, 41553), (57, 41571),

Gene: Sakai_79 Start: 46017, Stop: 46634, Start Num: 12

Candidate Starts for Sakai_79:

(1, 45630), (2, 45708), (4, 45933), (Start: 12 @46017 has 4 MA's), (18, 46071), (22, 46134), (27, 46188), (28, 46221), (59, 46626),

Gene: Sassafras_63 Start: 41853, Stop: 42461, Start Num: 13

Candidate Starts for Sassafras_63:

(Start: 13 @41853 has 21 MA's), (14, 41871), (16, 41880), (18, 41901), (28, 42051), (31, 42111), (38, 42165), (39, 42174), (52, 42300), (55, 42393), (57, 42411),

Gene: ScoobyDoobyDoo_54 Start: 18880, Stop: 19575, Start Num: 6

Candidate Starts for ScoobyDoobyDoo_54:

(Start: 6 @18880 has 1 MA's), (14, 18919), (17, 18934), (18, 18949), (26, 19051), (28, 19099), (32, 19162), (34, 19177), (36, 19183), (38, 19216), (48, 19315), (55, 19438), (60, 19501),

Gene: Scottish_63 Start: 41809, Stop: 42417, Start Num: 13

Candidate Starts for Scottish_63:

(Start: 13 @41809 has 21 MA's), (14, 41827), (16, 41836), (18, 41857), (28, 42007), (31, 42067), (38, 42121), (39, 42130), (52, 42256), (55, 42349), (57, 42367),

Gene: SonDevVon_90 Start: 46962, Stop: 47579, Start Num: 12

Candidate Starts for SonDevVon_90:

(1, 46575), (2, 46653), (4, 46878), (Start: 12 @46962 has 4 MA's), (18, 47016), (22, 47079), (27, 47133), (28, 47166), (59, 47571),

Gene: SpeedDemon_1100 Start: 72257, Stop: 72862, Start Num: 11

Candidate Starts for SpeedDemon_1100:

(7, 72239), (Start: 11 @72257 has 4 MA's), (15, 72281), (18, 72308), (28, 72458), (29, 72482), (35, 72536), (40, 72587), (48, 72668), (57, 72797),

Gene: SpicyFrank_84 Start: 46548, Stop: 47213, Start Num: 12

Candidate Starts for SpicyFrank_84:

(3, 46425), (4, 46464), (Start: 12 @46548 has 4 MA's), (18, 46602), (22, 46665), (27, 46719), (28, 46752), (43, 46932), (45, 46950), (51, 47010),

Gene: Spoonbill_62 Start: 40973, Stop: 41581, Start Num: 13

Candidate Starts for Spoonbill_62:

(Start: 13 @40973 has 21 MA's), (14, 40991), (16, 41000), (18, 41021), (28, 41171), (31, 41231), (38, 41285), (39, 41294), (52, 41420), (55, 41513), (57, 41531),

Gene: Stap_62 Start: 41742, Stop: 42350, Start Num: 13

Candidate Starts for Stap_62:

(Start: 13 @41742 has 21 MA's), (14, 41760), (16, 41769), (18, 41790), (28, 41940), (31, 42000), (38, 42054), (39, 42063), (52, 42189), (55, 42282), (57, 42300),