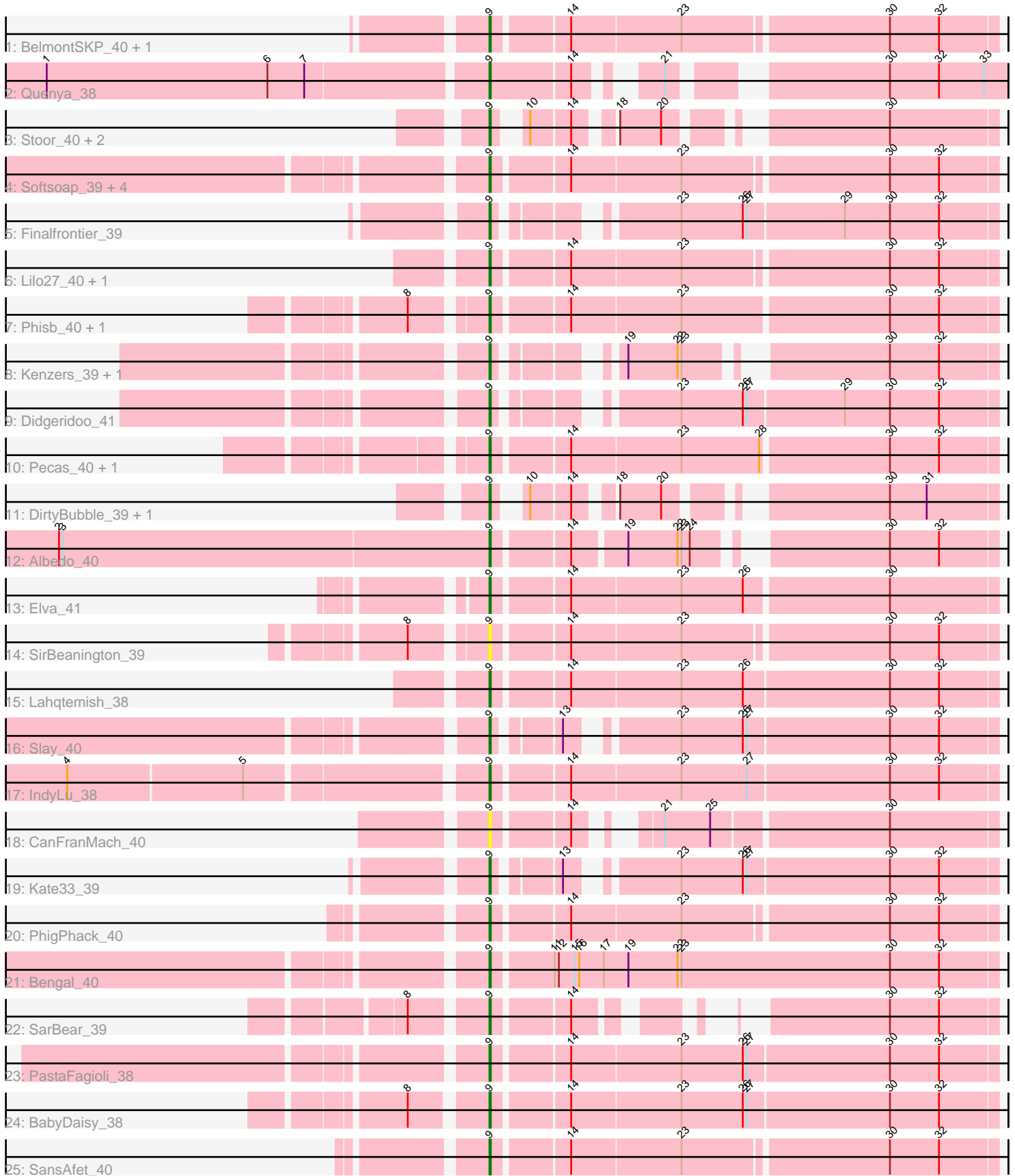


Pham 292988



Note: Tracks are now grouped by subcluster and scaled. Switching in subcluster is indicated by changes in track color. Track scale is now set by default to display the region 30 bp upstream of start 1 to 30 bp downstream of the last possible start. If this default region is judged to be packed too tightly with annotated starts, the track will be further scaled to only show that region of the ORF with annotated starts. This action will be indicated by adding "Zoomed" to the title. For starts, yellow indicates the location of called starts comprised solely of Glimmer/GeneMark auto-annotations, green indicates the location of called starts with at least 1 manual gene annotation.

Pham 292988 Report

This analysis was run 04/18/26 on database version 643.

Pham number 292988 has 37 members, 4 are drafts.

Phages represented in each track:

- Track 1 : BelmontSKP_40, AnnaLie_40
- Track 2 : Quenya_38
- Track 3 : Stoor_40, SanaSana_42, Icarian_42
- Track 4 : Softsoap_39, BubbaBear_38, AylexOG_41, Burritobowl_39, Eula_40
- Track 5 : Finalfrontier_39
- Track 6 : Lilo27_40, Nicky22_40
- Track 7 : Phisb_40, Swervy_40
- Track 8 : Kenzers_39, Lynlen_39
- Track 9 : Didgeridoo_41
- Track 10 : Pecas_40, QMacho_42
- Track 11 : DirtyBubble_39, Stromboli_40
- Track 12 : Albedo_40
- Track 13 : Elva_41
- Track 14 : SirBeanington_39
- Track 15 : Lahqtemish_38
- Track 16 : Slay_40
- Track 17 : IndyLu_38
- Track 18 : CanFranMach_40
- Track 19 : Kate33_39
- Track 20 : PhigPhack_40
- Track 21 : Bengal_40
- Track 22 : SarBear_39
- Track 23 : PastaFagioli_38
- Track 24 : BabyDaisy_38
- Track 25 : SansAfet_40

Summary of Final Annotations (See graph section above for start numbers):

The start number called the most often in the published annotations is 9, it was called in 33 of the 33 non-draft genes in the pham.

Genes that call this "Most Annotated" start:

- Albedo_40, AnnaLie_40, AylexOG_41, BabyDaisy_38, BelmontSKP_40, Bengal_40, BubbaBear_38, Burritobowl_39, CanFranMach_40, Didgeridoo_41, DirtyBubble_39,

Elva_41, Eula_40, Finalfrontier_39, Icarian_42, IndyLu_38, Kate33_39, Kenzers_39, Lahqtemish_38, Lilo27_40, Lynlen_39, Nicky22_40, PastaFagioli_38, Pecas_40, PhigPhack_40, Phisb_40, QMacho_42, Quenya_38, SanaSana_42, SansAfet_40, SarBear_39, SirBeanington_39, Slay_40, Softsoap_39, Stoor_40, Stromboli_40, Swervy_40,

Genes that have the "Most Annotated" start but do not call it:

-

Genes that do not have the "Most Annotated" start:

-

Summary by start number:

Start 9:

- Found in 37 of 37 (100.0%) of genes in pham
- Manual Annotations of this start: 33 of 33
- Called 100.0% of time when present
- Phage (with cluster) where this start called: Albedo_40 (EB), AnnaLie_40 (EB), AylexOG_41 (EB), BabyDaisy_38 (EB), BelmontSKP_40 (EB), Bengal_40 (EB), BubbaBear_38 (EB), Burritobowl_39 (EB), CanFranMach_40 (EB), Didgeridoo_41 (EB), DirtyBubble_39 (EB), Elva_41 (EB), Eula_40 (EB), Finalfrontier_39 (EB), Icarian_42 (EB), IndyLu_38 (EB), Kate33_39 (EB), Kenzers_39 (EB), Lahqtemish_38 (EB), Lilo27_40 (EB), Lynlen_39 (EB), Nicky22_40 (EB), PastaFagioli_38 (EB), Pecas_40 (EB), PhigPhack_40 (EB), Phisb_40 (EB), QMacho_42 (EB), Quenya_38 (EB), SanaSana_42 (EB), SansAfet_40 (EB), SarBear_39 (EB), SirBeanington_39 (EB), Slay_40 (EB), Softsoap_39 (EB), Stoor_40 (EB), Stromboli_40 (EB), Swervy_40 (EB),

Summary by clusters:

There is one cluster represented in this pham: EB

Info for manual annotations of cluster EB:

- Start number 9 was manually annotated 33 times for cluster EB.

Gene Information:

Gene: Albedo_40 Start: 26678, Stop: 27001, Start Num: 9

Candidate Starts for Albedo_40:

(2, 26366), (3, 26369), (Start: 9 @26678 has 33 MA's), (14, 26729), (19, 26765), (22, 26801), (23, 26804), (24, 26810), (30, 26924), (32, 26960),

Gene: AnnaLie_40 Start: 26779, Stop: 27129, Start Num: 9

Candidate Starts for AnnaLie_40:

(Start: 9 @26779 has 33 MA's), (14, 26830), (23, 26908), (30, 27052), (32, 27088),

Gene: AylexOG_41 Start: 26853, Stop: 27203, Start Num: 9

Candidate Starts for AylexOG_41:

(Start: 9 @26853 has 33 MA's), (14, 26904), (23, 26982), (30, 27126), (32, 27162),

Gene: BabyDaisy_38 Start: 26417, Stop: 26773, Start Num: 9
Candidate Starts for BabyDaisy_38:
(8, 26369), (Start: 9 @26417 has 33 MA's), (14, 26468), (23, 26546), (26, 26591), (27, 26594), (30, 26696), (32, 26732),

Gene: BelmontSKP_40 Start: 26779, Stop: 27129, Start Num: 9
Candidate Starts for BelmontSKP_40:
(Start: 9 @26779 has 33 MA's), (14, 26830), (23, 26908), (30, 27052), (32, 27088),

Gene: Bengal_40 Start: 26408, Stop: 26773, Start Num: 9
Candidate Starts for Bengal_40:
(Start: 9 @26408 has 33 MA's), (11, 26450), (12, 26453), (15, 26465), (16, 26468), (17, 26486), (19, 26504), (22, 26540), (23, 26543), (30, 26696), (32, 26732),

Gene: BubbaBear_38 Start: 26352, Stop: 26702, Start Num: 9
Candidate Starts for BubbaBear_38:
(Start: 9 @26352 has 33 MA's), (14, 26403), (23, 26481), (30, 26625), (32, 26661),

Gene: Burritobowl_39 Start: 26353, Stop: 26703, Start Num: 9
Candidate Starts for Burritobowl_39:
(Start: 9 @26353 has 33 MA's), (14, 26404), (23, 26482), (30, 26626), (32, 26662),

Gene: CanFranMach_40 Start: 26434, Stop: 26751, Start Num: 9
Candidate Starts for CanFranMach_40:
(Start: 9 @26434 has 33 MA's), (14, 26485), (21, 26518), (25, 26551), (30, 26674),

Gene: Didgeridoo_41 Start: 26825, Stop: 27154, Start Num: 9
Candidate Starts for Didgeridoo_41:
(Start: 9 @26825 has 33 MA's), (23, 26927), (26, 26972), (27, 26975), (29, 27044), (30, 27077), (32, 27113),

Gene: DirtyBubble_39 Start: 27207, Stop: 27503, Start Num: 9
Candidate Starts for DirtyBubble_39:
(Start: 9 @27207 has 33 MA's), (10, 27219), (14, 27246), (18, 27267), (20, 27297), (30, 27426), (31, 27453),

Gene: Elva_41 Start: 27269, Stop: 27622, Start Num: 9
Candidate Starts for Elva_41:
(Start: 9 @27269 has 33 MA's), (14, 27320), (23, 27398), (26, 27443), (30, 27545),

Gene: Eula_40 Start: 26454, Stop: 26804, Start Num: 9
Candidate Starts for Eula_40:
(Start: 9 @26454 has 33 MA's), (14, 26505), (23, 26583), (30, 26727), (32, 26763),

Gene: Finalfrontier_39 Start: 27068, Stop: 27397, Start Num: 9
Candidate Starts for Finalfrontier_39:
(Start: 9 @27068 has 33 MA's), (23, 27170), (26, 27215), (27, 27218), (29, 27287), (30, 27320), (32, 27356),

Gene: Icarian_42 Start: 27843, Stop: 28139, Start Num: 9
Candidate Starts for Icarian_42:
(Start: 9 @27843 has 33 MA's), (10, 27855), (14, 27882), (18, 27903), (20, 27933), (30, 28062),

Gene: IndyLu_38 Start: 26383, Stop: 26739, Start Num: 9
Candidate Starts for IndyLu_38:
(4, 26098), (5, 26224), (Start: 9 @26383 has 33 MA's), (14, 26434), (23, 26512), (27, 26560), (30, 26662), (32, 26698),

Gene: Kate33_39 Start: 26148, Stop: 26477, Start Num: 9
Candidate Starts for Kate33_39:
(Start: 9 @26148 has 33 MA's), (13, 26187), (23, 26250), (26, 26295), (27, 26298), (30, 26400), (32, 26436),

Gene: Kenzers_39 Start: 26376, Stop: 26675, Start Num: 9
Candidate Starts for Kenzers_39:
(Start: 9 @26376 has 33 MA's), (19, 26439), (22, 26475), (23, 26478), (30, 26598), (32, 26634),

Gene: Lahqtemish_38 Start: 26424, Stop: 26780, Start Num: 9
Candidate Starts for Lahqtemish_38:
(Start: 9 @26424 has 33 MA's), (14, 26475), (23, 26553), (26, 26598), (30, 26703), (32, 26739),

Gene: Lilo27_40 Start: 26363, Stop: 26713, Start Num: 9
Candidate Starts for Lilo27_40:
(Start: 9 @26363 has 33 MA's), (14, 26414), (23, 26492), (30, 26636), (32, 26672),

Gene: Lynlen_39 Start: 26376, Stop: 26675, Start Num: 9
Candidate Starts for Lynlen_39:
(Start: 9 @26376 has 33 MA's), (19, 26439), (22, 26475), (23, 26478), (30, 26598), (32, 26634),

Gene: Nicky22_40 Start: 26917, Stop: 27267, Start Num: 9
Candidate Starts for Nicky22_40:
(Start: 9 @26917 has 33 MA's), (14, 26968), (23, 27046), (30, 27190), (32, 27226),

Gene: PastaFagioli_38 Start: 26409, Stop: 26765, Start Num: 9
Candidate Starts for PastaFagioli_38:
(Start: 9 @26409 has 33 MA's), (14, 26460), (23, 26538), (26, 26583), (27, 26586), (30, 26688), (32, 26724),

Gene: Pecas_40 Start: 26669, Stop: 27022, Start Num: 9
Candidate Starts for Pecas_40:
(Start: 9 @26669 has 33 MA's), (14, 26720), (23, 26798), (28, 26855), (30, 26945), (32, 26981),

Gene: PhigPhack_40 Start: 26279, Stop: 26629, Start Num: 9
Candidate Starts for PhigPhack_40:
(Start: 9 @26279 has 33 MA's), (14, 26330), (23, 26408), (30, 26552), (32, 26588),

Gene: Phisb_40 Start: 26510, Stop: 26863, Start Num: 9
Candidate Starts for Phisb_40:
(8, 26462), (Start: 9 @26510 has 33 MA's), (14, 26561), (23, 26639), (30, 26786), (32, 26822),

Gene: QMacho_42 Start: 27152, Stop: 27505, Start Num: 9
Candidate Starts for QMacho_42:
(Start: 9 @27152 has 33 MA's), (14, 27203), (23, 27281), (28, 27338), (30, 27428), (32, 27464),

Gene: Quenya_38 Start: 26614, Stop: 26925, Start Num: 9
Candidate Starts for Quenya_38:

(1, 26302), (6, 26464), (7, 26491), (Start: 9 @26614 has 33 MA's), (14, 26671), (21, 26710), (30, 26839), (32, 26875), (33, 26908),

Gene: SanaSana_42 Start: 28045, Stop: 28341, Start Num: 9

Candidate Starts for SanaSana_42:

(Start: 9 @28045 has 33 MA's), (10, 28057), (14, 28084), (18, 28105), (20, 28135), (30, 28264),

Gene: SansAfet_40 Start: 26366, Stop: 26716, Start Num: 9

Candidate Starts for SansAfet_40:

(Start: 9 @26366 has 33 MA's), (14, 26417), (23, 26495), (30, 26639), (32, 26675),

Gene: SarBear_39 Start: 26231, Stop: 26512, Start Num: 9

Candidate Starts for SarBear_39:

(8, 26183), (Start: 9 @26231 has 33 MA's), (14, 26282), (30, 26435), (32, 26471),

Gene: SirBeanington_39 Start: 26552, Stop: 26902, Start Num: 9

Candidate Starts for SirBeanington_39:

(8, 26504), (Start: 9 @26552 has 33 MA's), (14, 26603), (23, 26681), (30, 26825), (32, 26861),

Gene: Slay_40 Start: 26911, Stop: 27240, Start Num: 9

Candidate Starts for Slay_40:

(Start: 9 @26911 has 33 MA's), (13, 26950), (23, 27013), (26, 27058), (27, 27061), (30, 27163), (32, 27199),

Gene: Softsoap_39 Start: 26277, Stop: 26627, Start Num: 9

Candidate Starts for Softsoap_39:

(Start: 9 @26277 has 33 MA's), (14, 26328), (23, 26406), (30, 26550), (32, 26586),

Gene: Stoor_40 Start: 27714, Stop: 28010, Start Num: 9

Candidate Starts for Stoor_40:

(Start: 9 @27714 has 33 MA's), (10, 27726), (14, 27753), (18, 27774), (20, 27804), (30, 27933),

Gene: Stromboli_40 Start: 27577, Stop: 27873, Start Num: 9

Candidate Starts for Stromboli_40:

(Start: 9 @27577 has 33 MA's), (10, 27589), (14, 27616), (18, 27637), (20, 27667), (30, 27796), (31, 27823),

Gene: Swervy_40 Start: 26431, Stop: 26784, Start Num: 9

Candidate Starts for Swervy_40:

(8, 26383), (Start: 9 @26431 has 33 MA's), (14, 26482), (23, 26560), (30, 26707), (32, 26743),