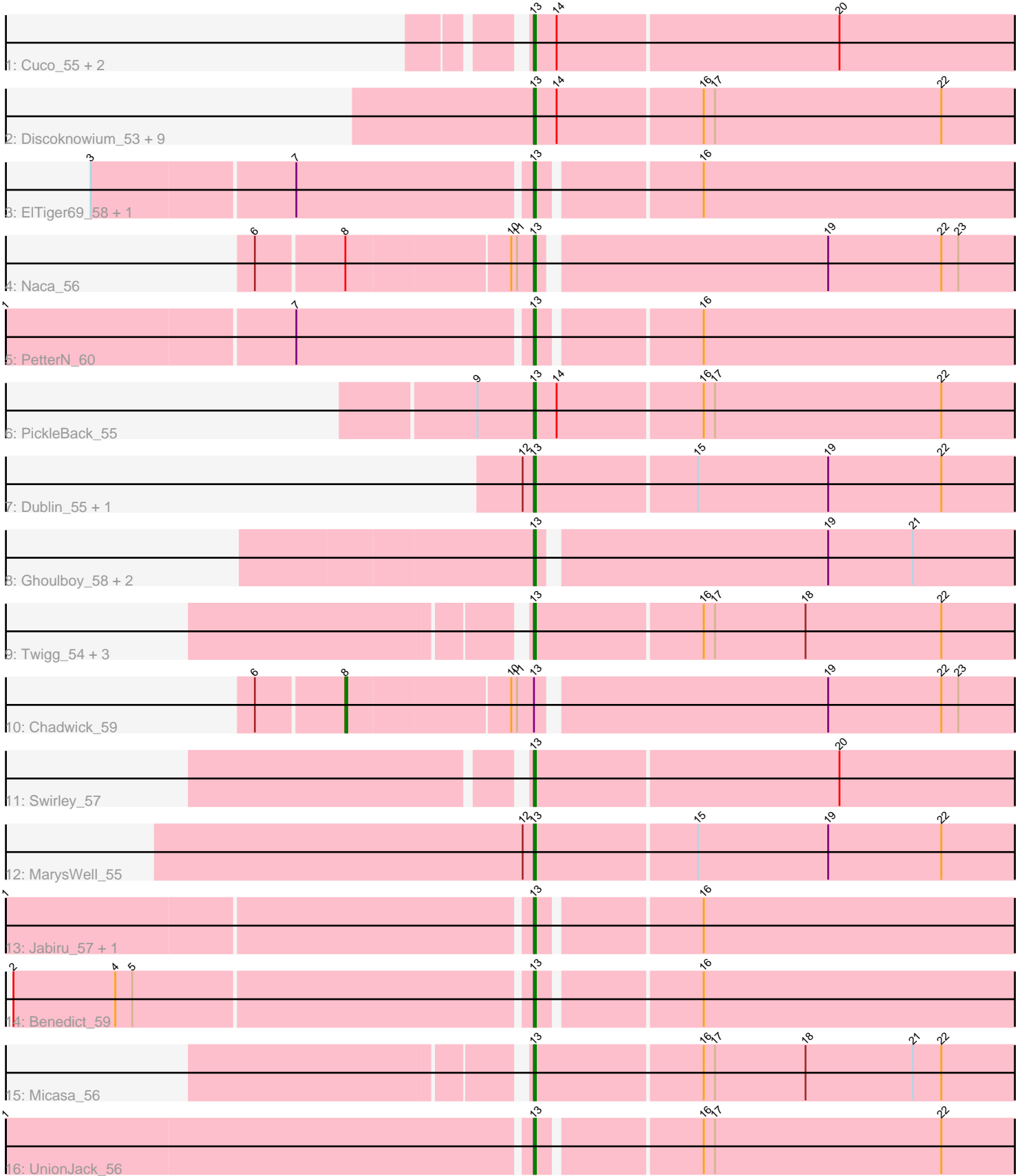


Pham 292991



Note: Tracks are now grouped by subcluster and scaled. Switching in subcluster is indicated by changes in track color. Track scale is now set by default to display the region 30 bp upstream of start 1 to 30 bp downstream of the last possible start. If this default region is judged to be packed too tightly with annotated starts, the track will be further scaled to only show that region of the ORF with annotated starts. This action will be indicated by adding "Zoomed" to the title. For starts, yellow indicates the location of called starts comprised solely of Glimmer/GeneMark auto-annotations, green indicates the location of called starts with at least 1 manual gene annotation.

Pham 292991 Report

This analysis was run 04/18/26 on database version 643.

Pham number 292991 has 35 members, 3 are drafts.

Phages represented in each track:

- Track 1 : Cuco_55, Coog_54, Midas2_54
- Track 2 : Discoknowium_53, Jovo_55, Lev2_55, Archetta_54, Conspiracy_55, ForGetIt_55, Tiger_54, Aragog_54, AgentM_54, Phlorence_53
- Track 3 : ElTiger69_58, Airmid_56
- Track 4 : Naca_56
- Track 5 : PetterN_60
- Track 6 : PickleBack_55
- Track 7 : Dublin_55, Theia_54
- Track 8 : Ghoulboy_58, SydNat_58, Zolita_57
- Track 9 : Twigg_54, Florence1_52, Florence4_54, Tarynearal_53
- Track 10 : Chadwick_59
- Track 11 : Swirley_57
- Track 12 : MarysWell_55
- Track 13 : Jabiru_57, Scorpia_60
- Track 14 : Benedict_59
- Track 15 : Micasa_56
- Track 16 : UnionJack_56

Summary of Final Annotations (See graph section above for start numbers):

The start number called the most often in the published annotations is 13, it was called in 31 of the 32 non-draft genes in the pham.

Genes that call this "Most Annotated" start:

- AgentM_54, Airmid_56, Aragog_54, Archetta_54, Benedict_59, Conspiracy_55, Coog_54, Cuco_55, Discoknowium_53, Dublin_55, ElTiger69_58, Florence1_52, Florence4_54, ForGetIt_55, Ghoulboy_58, Jabiru_57, Jovo_55, Lev2_55, MarysWell_55, Micasa_56, Midas2_54, Naca_56, PetterN_60, Phlorence_53, PickleBack_55, Scorpia_60, Swirley_57, SydNat_58, Tarynearal_53, Theia_54, Tiger_54, Twigg_54, UnionJack_56, Zolita_57,

Genes that have the "Most Annotated" start but do not call it:

- Chadwick_59,

Genes that do not have the "Most Annotated" start:

-

Summary by start number:

Start 8:

- Found in 2 of 35 (5.7%) of genes in pham
- Manual Annotations of this start: 1 of 32
- Called 50.0% of time when present
- Phage (with cluster) where this start called: Chadwick_59 (A5),

Start 13:

- Found in 35 of 35 (100.0%) of genes in pham
- Manual Annotations of this start: 31 of 32
- Called 97.1% of time when present
- Phage (with cluster) where this start called: AgentM_54 (A5), Airmid_56 (A5), Aragog_54 (A5), Archetta_54 (A5), Benedict_59 (A5), Conspiracy_55 (A5), Coog_54 (A5), Cuco_55 (A5), Discoknowium_53 (A5), Dublin_55 (A5), ElTiger69_58 (A5), Florence1_52 (A5), Florence4_54 (A5), ForGetIt_55 (A5), Ghoulboy_58 (A5), Jabiru_57 (A5), Jovo_55 (A5), Lev2_55 (A5), MarysWell_55 (A5), Micasa_56 (A5), Midas2_54 (A5), Naca_56 (A5), PetterN_60 (A5), Phlorence_53 (A5), PickleBack_55 (A5), Scorpia_60 (A5), Swirley_57 (A5), SydNat_58 (A5), Tarynearal_53 (A5), Theia_54 (A5), Tiger_54 (A5), Twigg_54 (A5), UnionJack_56 (A5), Zolita_57 (A5),

Summary by clusters:

There is one cluster represented in this pham: A5

Info for manual annotations of cluster A5:

- Start number 8 was manually annotated 1 time for cluster A5.
- Start number 13 was manually annotated 31 times for cluster A5.

Gene Information:

Gene: AgentM_54 Start: 38609, Stop: 38352, Start Num: 13

Candidate Starts for AgentM_54:

(Start: 13 @38609 has 31 MA's), (14, 38597), (16, 38522), (17, 38516), (22, 38396),

Gene: Airmid_56 Start: 38747, Stop: 38496, Start Num: 13

Candidate Starts for Airmid_56:

(3, 38972), (7, 38867), (Start: 13 @38747 has 31 MA's), (16, 38666),

Gene: Aragog_54 Start: 38629, Stop: 38372, Start Num: 13

Candidate Starts for Aragog_54:

(Start: 13 @38629 has 31 MA's), (14, 38617), (16, 38542), (17, 38536), (22, 38416),

Gene: Archetta_54 Start: 39039, Stop: 38782, Start Num: 13

Candidate Starts for Archetta_54:

(Start: 13 @39039 has 31 MA's), (14, 39027), (16, 38952), (17, 38946), (22, 38826),

Gene: Benedict_59 Start: 38995, Stop: 38744, Start Num: 13

Candidate Starts for Benedict_59:

(2, 39262), (4, 39208), (5, 39199), (Start: 13 @38995 has 31 MA's), (16, 38914),

Gene: Chadwick_59 Start: 38932, Stop: 38585, Start Num: 8

Candidate Starts for Chadwick_59:

(6, 38977), (Start: 8 @38932 has 1 MA's), (10, 38848), (11, 38845), (Start: 13 @38836 has 31 MA's), (19, 38689), (22, 38629), (23, 38620),

Gene: Conspiracy_55 Start: 38851, Stop: 38594, Start Num: 13

Candidate Starts for Conspiracy_55:

(Start: 13 @38851 has 31 MA's), (14, 38839), (16, 38764), (17, 38758), (22, 38638),

Gene: Coog_54 Start: 39045, Stop: 38788, Start Num: 13

Candidate Starts for Coog_54:

(Start: 13 @39045 has 31 MA's), (14, 39033), (20, 38886),

Gene: Cuco_55 Start: 38905, Stop: 38648, Start Num: 13

Candidate Starts for Cuco_55:

(Start: 13 @38905 has 31 MA's), (14, 38893), (20, 38746),

Gene: Discoknowium_53 Start: 38518, Stop: 38261, Start Num: 13

Candidate Starts for Discoknowium_53:

(Start: 13 @38518 has 31 MA's), (14, 38506), (16, 38431), (17, 38425), (22, 38305),

Gene: Dublin_55 Start: 39020, Stop: 38763, Start Num: 13

Candidate Starts for Dublin_55:

(12, 39026), (Start: 13 @39020 has 31 MA's), (15, 38936), (19, 38867), (22, 38807),

Gene: EITiger69_58 Start: 38971, Stop: 38720, Start Num: 13

Candidate Starts for EITiger69_58:

(3, 39196), (7, 39091), (Start: 13 @38971 has 31 MA's), (16, 38890),

Gene: Florence1_52 Start: 38384, Stop: 38127, Start Num: 13

Candidate Starts for Florence1_52:

(Start: 13 @38384 has 31 MA's), (16, 38297), (17, 38291), (18, 38243), (22, 38171),

Gene: Florence4_54 Start: 38384, Stop: 38127, Start Num: 13

Candidate Starts for Florence4_54:

(Start: 13 @38384 has 31 MA's), (16, 38297), (17, 38291), (18, 38243), (22, 38171),

Gene: ForGetIt_55 Start: 38876, Stop: 38619, Start Num: 13

Candidate Starts for ForGetIt_55:

(Start: 13 @38876 has 31 MA's), (14, 38864), (16, 38789), (17, 38783), (22, 38663),

Gene: Ghoulboy_58 Start: 39749, Stop: 39498, Start Num: 13

Candidate Starts for Ghoulboy_58:

(Start: 13 @39749 has 31 MA's), (19, 39602), (21, 39557),

Gene: Jabiru_57 Start: 38850, Stop: 38599, Start Num: 13

Candidate Starts for Jabiru_57:

(1, 39120), (Start: 13 @38850 has 31 MA's), (16, 38769),

Gene: Jovo_55 Start: 39132, Stop: 38875, Start Num: 13

Candidate Starts for Jovo_55:

(Start: 13 @39132 has 31 MA's), (14, 39120), (16, 39045), (17, 39039), (22, 38919),

Gene: Lev2_55 Start: 38764, Stop: 38507, Start Num: 13

Candidate Starts for Lev2_55:

(Start: 13 @38764 has 31 MA's), (14, 38752), (16, 38677), (17, 38671), (22, 38551),

Gene: MarysWell_55 Start: 39263, Stop: 39006, Start Num: 13

Candidate Starts for MarysWell_55:

(12, 39269), (Start: 13 @39263 has 31 MA's), (15, 39179), (19, 39110), (22, 39050),

Gene: Micasa_56 Start: 39137, Stop: 38880, Start Num: 13

Candidate Starts for Micasa_56:

(Start: 13 @39137 has 31 MA's), (16, 39050), (17, 39044), (18, 38996), (21, 38939), (22, 38924),

Gene: Midas2_54 Start: 39045, Stop: 38788, Start Num: 13

Candidate Starts for Midas2_54:

(Start: 13 @39045 has 31 MA's), (14, 39033), (20, 38886),

Gene: Naca_56 Start: 39389, Stop: 39138, Start Num: 13

Candidate Starts for Naca_56:

(6, 39530), (Start: 8 @39485 has 1 MA's), (10, 39401), (11, 39398), (Start: 13 @39389 has 31 MA's), (19, 39242), (22, 39182), (23, 39173),

Gene: PetterN_60 Start: 39004, Stop: 38753, Start Num: 13

Candidate Starts for PetterN_60:

(1, 39274), (7, 39124), (Start: 13 @39004 has 31 MA's), (16, 38923),

Gene: Phlorence_53 Start: 38509, Stop: 38252, Start Num: 13

Candidate Starts for Phlorence_53:

(Start: 13 @38509 has 31 MA's), (14, 38497), (16, 38422), (17, 38416), (22, 38296),

Gene: PickleBack_55 Start: 38756, Stop: 38499, Start Num: 13

Candidate Starts for PickleBack_55:

(9, 38786), (Start: 13 @38756 has 31 MA's), (14, 38744), (16, 38669), (17, 38663), (22, 38543),

Gene: Scorpia_60 Start: 39063, Stop: 38812, Start Num: 13

Candidate Starts for Scorpia_60:

(1, 39333), (Start: 13 @39063 has 31 MA's), (16, 38982),

Gene: Swirley_57 Start: 39125, Stop: 38868, Start Num: 13

Candidate Starts for Swirley_57:

(Start: 13 @39125 has 31 MA's), (20, 38966),

Gene: SydNat_58 Start: 39758, Stop: 39507, Start Num: 13

Candidate Starts for SydNat_58:

(Start: 13 @39758 has 31 MA's), (19, 39611), (21, 39566),

Gene: Tarynearal_53 Start: 38570, Stop: 38313, Start Num: 13

Candidate Starts for Tarynearal_53:

(Start: 13 @38570 has 31 MA's), (16, 38483), (17, 38477), (18, 38429), (22, 38357),

Gene: Theia_54 Start: 39244, Stop: 38987, Start Num: 13

Candidate Starts for Theia_54:

(12, 39250), (Start: 13 @39244 has 31 MA's), (15, 39160), (19, 39091), (22, 39031),

Gene: Tiger_54 Start: 38430, Stop: 38173, Start Num: 13

Candidate Starts for Tiger_54:

(Start: 13 @38430 has 31 MA's), (14, 38418), (16, 38343), (17, 38337), (22, 38217),

Gene: Twigg_54 Start: 38773, Stop: 38516, Start Num: 13

Candidate Starts for Twigg_54:

(Start: 13 @38773 has 31 MA's), (16, 38686), (17, 38680), (18, 38632), (22, 38560),

Gene: UnionJack_56 Start: 38568, Stop: 38317, Start Num: 13

Candidate Starts for UnionJack_56:

(1, 38841), (Start: 13 @38568 has 31 MA's), (16, 38487), (17, 38481), (22, 38361),

Gene: Zolita_57 Start: 39762, Stop: 39511, Start Num: 13

Candidate Starts for Zolita_57:

(Start: 13 @39762 has 31 MA's), (19, 39615), (21, 39570),