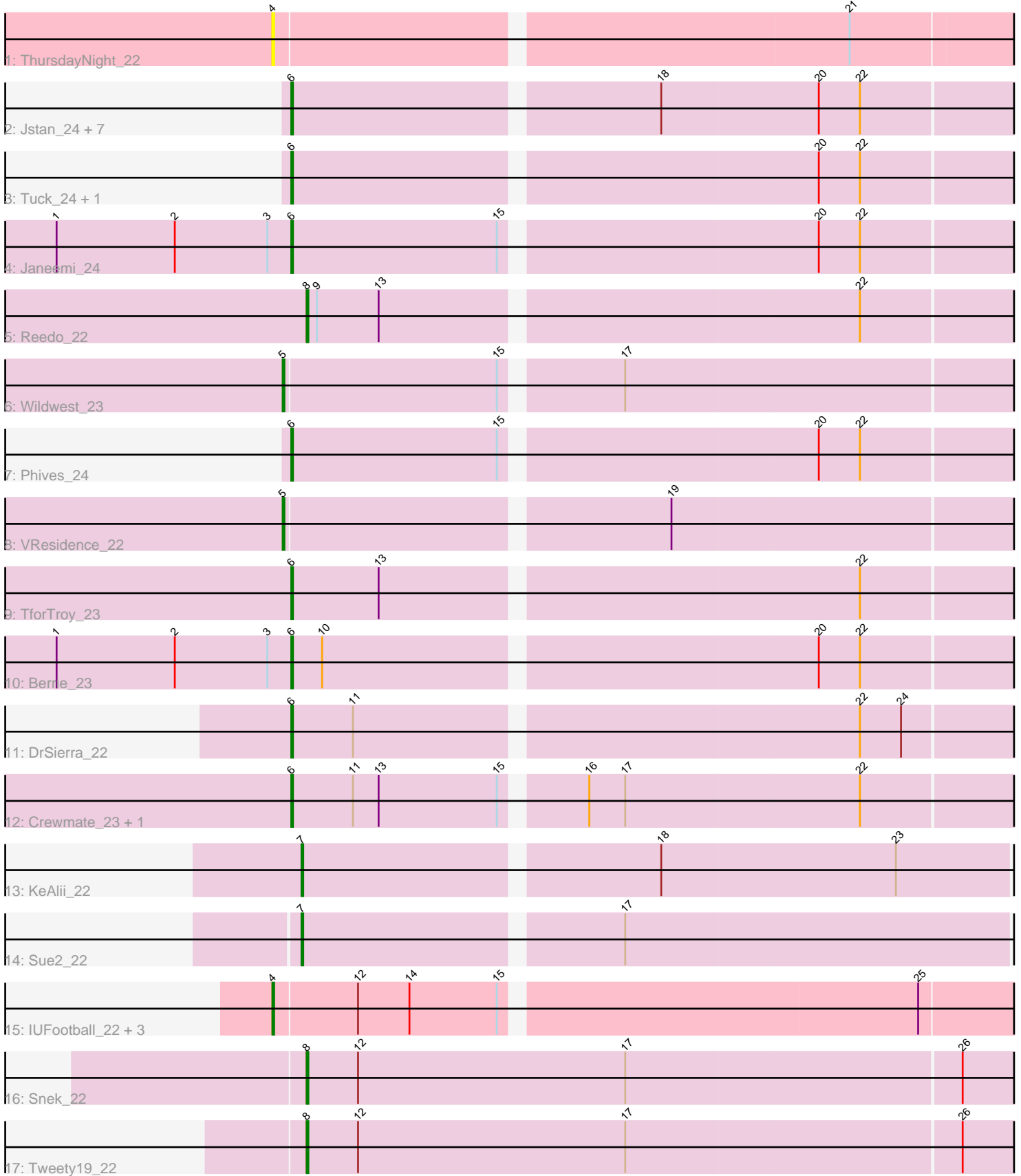


Pham 293041



Note: Tracks are now grouped by subcluster and scaled. Switching in subcluster is indicated by changes in track color. Track scale is now set by default to display the region 30 bp upstream of start 1 to 30 bp downstream of the last possible start. If this default region is judged to be packed too tightly with annotated starts, the track will be further scaled to only show that region of the ORF with annotated starts. This action will be indicated by adding "Zoomed" to the title. For starts, yellow indicates the location of called starts comprised solely of Glimmer/GeneMark auto-annotations, green indicates the location of called starts with at least 1 manual gene annotation.

Pham 293041 Report

This analysis was run 04/18/26 on database version 643.

Pham number 293041 has 29 members, 6 are drafts.

Phages represented in each track:

- Track 1 : ThursdayNight_22
- Track 2 : Jstan_24, Eraser_23, Skelbel_24, Elezi_23, London_23, Subaru_24, Niobe_23, Asa16_23
- Track 3 : Tuck_24, Community_23
- Track 4 : Janeemi_24
- Track 5 : Reedo_22
- Track 6 : Wildwest_23
- Track 7 : Phives_24
- Track 8 : VResidence_22
- Track 9 : TforTroy_23
- Track 10 : Berrie_23
- Track 11 : DrSierra_22
- Track 12 : Crewmate_23, ObiToo_22
- Track 13 : KeAlii_22
- Track 14 : Sue2_22
- Track 15 : IUFootball_22, Liebe_22, Maureen_22, MaGuCo_22
- Track 16 : Snek_22
- Track 17 : Tweety19_22

Summary of Final Annotations (See graph section above for start numbers):

The start number called the most often in the published annotations is 6, it was called in 13 of the 23 non-draft genes in the pham.

Genes that call this "Most Annotated" start:

- Asa16_23, Berrie_23, Community_23, Crewmate_23, DrSierra_22, Elezi_23, Eraser_23, Janeemi_24, Jstan_24, London_23, Niobe_23, ObiToo_22, Phives_24, Skelbel_24, Subaru_24, TforTroy_23, Tuck_24,

Genes that have the "Most Annotated" start but do not call it:

-

Genes that do not have the "Most Annotated" start:

- IUFootball_22, KeAlii_22, Liebe_22, MaGuCo_22, Maureen_22, Reedo_22, Snek_22, Sue2_22, ThursdayNight_22, Tweety19_22, VResidence_22, Wildwest_23,

Summary by start number:

Start 4:

- Found in 5 of 29 (17.2%) of genes in pham
- Manual Annotations of this start: 3 of 23
- Called 100.0% of time when present
- Phage (with cluster) where this start called: IUFootball_22 (AZ2), Liebe_22 (AZ2), MaGuCo_22 (AZ2), Maureen_22 (AZ2), ThursdayNight_22 (AZ),

Start 5:

- Found in 2 of 29 (6.9%) of genes in pham
- Manual Annotations of this start: 2 of 23
- Called 100.0% of time when present
- Phage (with cluster) where this start called: VResidence_22 (AZ1), Wildwest_23 (AZ1),

Start 6:

- Found in 17 of 29 (58.6%) of genes in pham
- Manual Annotations of this start: 13 of 23
- Called 100.0% of time when present
- Phage (with cluster) where this start called: Asa16_23 (AZ1), Berrie_23 (AZ1), Community_23 (AZ1), Crewmate_23 (AZ1), DrSierra_22 (AZ1), Elezi_23 (AZ1), Eraser_23 (AZ1), Janeemi_24 (AZ1), Jstan_24 (AZ1), London_23 (AZ1), Niobe_23 (AZ1), ObiToo_22 (AZ1), Phives_24 (AZ1), Skelbel_24 (AZ1), Subaru_24 (AZ1), TforTroy_23 (AZ1), Tuck_24 (AZ1),

Start 7:

- Found in 2 of 29 (6.9%) of genes in pham
- Manual Annotations of this start: 2 of 23
- Called 100.0% of time when present
- Phage (with cluster) where this start called: KeAlii_22 (AZ1), Sue2_22 (AZ1),

Start 8:

- Found in 3 of 29 (10.3%) of genes in pham
- Manual Annotations of this start: 3 of 23
- Called 100.0% of time when present
- Phage (with cluster) where this start called: Reedo_22 (AZ1), Snek_22 (AZ3), Tweety19_22 (AZ3),

Summary by clusters:

There are 4 clusters represented in this pham: AZ1, AZ2, AZ, AZ3,

Info for manual annotations of cluster AZ1:

- Start number 5 was manually annotated 2 times for cluster AZ1.
- Start number 6 was manually annotated 13 times for cluster AZ1.
- Start number 7 was manually annotated 2 times for cluster AZ1.
- Start number 8 was manually annotated 1 time for cluster AZ1.

Info for manual annotations of cluster AZ2:

- Start number 4 was manually annotated 3 times for cluster AZ2.

Info for manual annotations of cluster AZ3:

- Start number 8 was manually annotated 2 times for cluster AZ3.

Gene Information:

Gene: Asa16_23 Start: 19751, Stop: 20182, Start Num: 6

Candidate Starts for Asa16_23:

(Start: 6 @19751 has 13 MA's), (18, 19955), (20, 20045), (22, 20069),

Gene: Berrie_23 Start: 20305, Stop: 20736, Start Num: 6

Candidate Starts for Berrie_23:

(1, 20170), (2, 20239), (3, 20293), (Start: 6 @20305 has 13 MA's), (10, 20323), (20, 20599), (22, 20623),

Gene: Community_23 Start: 21391, Stop: 21822, Start Num: 6

Candidate Starts for Community_23:

(Start: 6 @21391 has 13 MA's), (20, 21685), (22, 21709),

Gene: Crewmate_23 Start: 18201, Stop: 18617, Start Num: 6

Candidate Starts for Crewmate_23:

(Start: 6 @18201 has 13 MA's), (11, 18237), (13, 18252), (15, 18321), (16, 18363), (17, 18384), (22, 18519),

Gene: DrSierra_22 Start: 18261, Stop: 18674, Start Num: 6

Candidate Starts for DrSierra_22:

(Start: 6 @18261 has 13 MA's), (11, 18297), (22, 18579), (24, 18603),

Gene: Elezi_23 Start: 19752, Stop: 20183, Start Num: 6

Candidate Starts for Elezi_23:

(Start: 6 @19752 has 13 MA's), (18, 19956), (20, 20046), (22, 20070),

Gene: Eraser_23 Start: 19752, Stop: 20183, Start Num: 6

Candidate Starts for Eraser_23:

(Start: 6 @19752 has 13 MA's), (18, 19956), (20, 20046), (22, 20070),

Gene: IUFootball_22 Start: 19203, Stop: 19616, Start Num: 4

Candidate Starts for IUFootball_22:

(Start: 4 @19203 has 3 MA's), (12, 19251), (14, 19281), (15, 19332), (25, 19563),

Gene: Janeemi_24 Start: 21398, Stop: 21829, Start Num: 6

Candidate Starts for Janeemi_24:

(1, 21263), (2, 21332), (3, 21386), (Start: 6 @21398 has 13 MA's), (15, 21518), (20, 21692), (22, 21716),

Gene: Jstan_24 Start: 19752, Stop: 20183, Start Num: 6

Candidate Starts for Jstan_24:

(Start: 6 @19752 has 13 MA's), (18, 19956), (20, 20046), (22, 20070),

Gene: KeAlii_22 Start: 17765, Stop: 18163, Start Num: 7
Candidate Starts for KeAlii_22:
(Start: 7 @17765 has 2 MA's), (18, 17963), (23, 18098),

Gene: Liebe_22 Start: 19203, Stop: 19616, Start Num: 4
Candidate Starts for Liebe_22:
(Start: 4 @19203 has 3 MA's), (12, 19251), (14, 19281), (15, 19332), (25, 19563),

Gene: London_23 Start: 19752, Stop: 20183, Start Num: 6
Candidate Starts for London_23:
(Start: 6 @19752 has 13 MA's), (18, 19956), (20, 20046), (22, 20070),

Gene: MaGuCo_22 Start: 19136, Stop: 19549, Start Num: 4
Candidate Starts for MaGuCo_22:
(Start: 4 @19136 has 3 MA's), (12, 19184), (14, 19214), (15, 19265), (25, 19496),

Gene: Maureen_22 Start: 19203, Stop: 19616, Start Num: 4
Candidate Starts for Maureen_22:
(Start: 4 @19203 has 3 MA's), (12, 19251), (14, 19281), (15, 19332), (25, 19563),

Gene: Niobe_23 Start: 19752, Stop: 20183, Start Num: 6
Candidate Starts for Niobe_23:
(Start: 6 @19752 has 13 MA's), (18, 19956), (20, 20046), (22, 20070),

Gene: ObiToo_22 Start: 17938, Stop: 18354, Start Num: 6
Candidate Starts for ObiToo_22:
(Start: 6 @17938 has 13 MA's), (11, 17974), (13, 17989), (15, 18058), (16, 18100), (17, 18121), (22, 18256),

Gene: Phives_24 Start: 21228, Stop: 21659, Start Num: 6
Candidate Starts for Phives_24:
(Start: 6 @21228 has 13 MA's), (15, 21348), (20, 21522), (22, 21546),

Gene: Reedo_22 Start: 17777, Stop: 18190, Start Num: 8
Candidate Starts for Reedo_22:
(Start: 8 @17777 has 3 MA's), (9, 17783), (13, 17819), (22, 18086),

Gene: Skelbel_24 Start: 19752, Stop: 20183, Start Num: 6
Candidate Starts for Skelbel_24:
(Start: 6 @19752 has 13 MA's), (18, 19956), (20, 20046), (22, 20070),

Gene: Snek_22 Start: 16814, Stop: 17230, Start Num: 8
Candidate Starts for Snek_22:
(Start: 8 @16814 has 3 MA's), (12, 16844), (17, 17000), (26, 17192),

Gene: Subaru_24 Start: 19752, Stop: 20183, Start Num: 6
Candidate Starts for Subaru_24:
(Start: 6 @19752 has 13 MA's), (18, 19956), (20, 20046), (22, 20070),

Gene: Sue2_22 Start: 18425, Stop: 18823, Start Num: 7
Candidate Starts for Sue2_22:
(Start: 7 @18425 has 2 MA's), (17, 18602),

Gene: TforTroy_23 Start: 19887, Stop: 20318, Start Num: 6
Candidate Starts for TforTroy_23:
(Start: 6 @19887 has 13 MA's), (13, 19938), (22, 20205),

Gene: ThursdayNight_22 Start: 19070, Stop: 19489, Start Num: 4
Candidate Starts for ThursdayNight_22:
(Start: 4 @19070 has 3 MA's), (21, 19391),

Gene: Tuck_24 Start: 21371, Stop: 21802, Start Num: 6
Candidate Starts for Tuck_24:
(Start: 6 @21371 has 13 MA's), (20, 21665), (22, 21689),

Gene: Tweety19_22 Start: 16813, Stop: 17229, Start Num: 8
Candidate Starts for Tweety19_22:
(Start: 8 @16813 has 3 MA's), (12, 16843), (17, 16999), (26, 17191),

Gene: VResidence_22 Start: 17838, Stop: 18257, Start Num: 5
Candidate Starts for VResidence_22:
(Start: 5 @17838 has 2 MA's), (19, 18051),

Gene: Wildwest_23 Start: 19187, Stop: 19603, Start Num: 5
Candidate Starts for Wildwest_23:
(Start: 5 @19187 has 2 MA's), (15, 19310), (17, 19373),