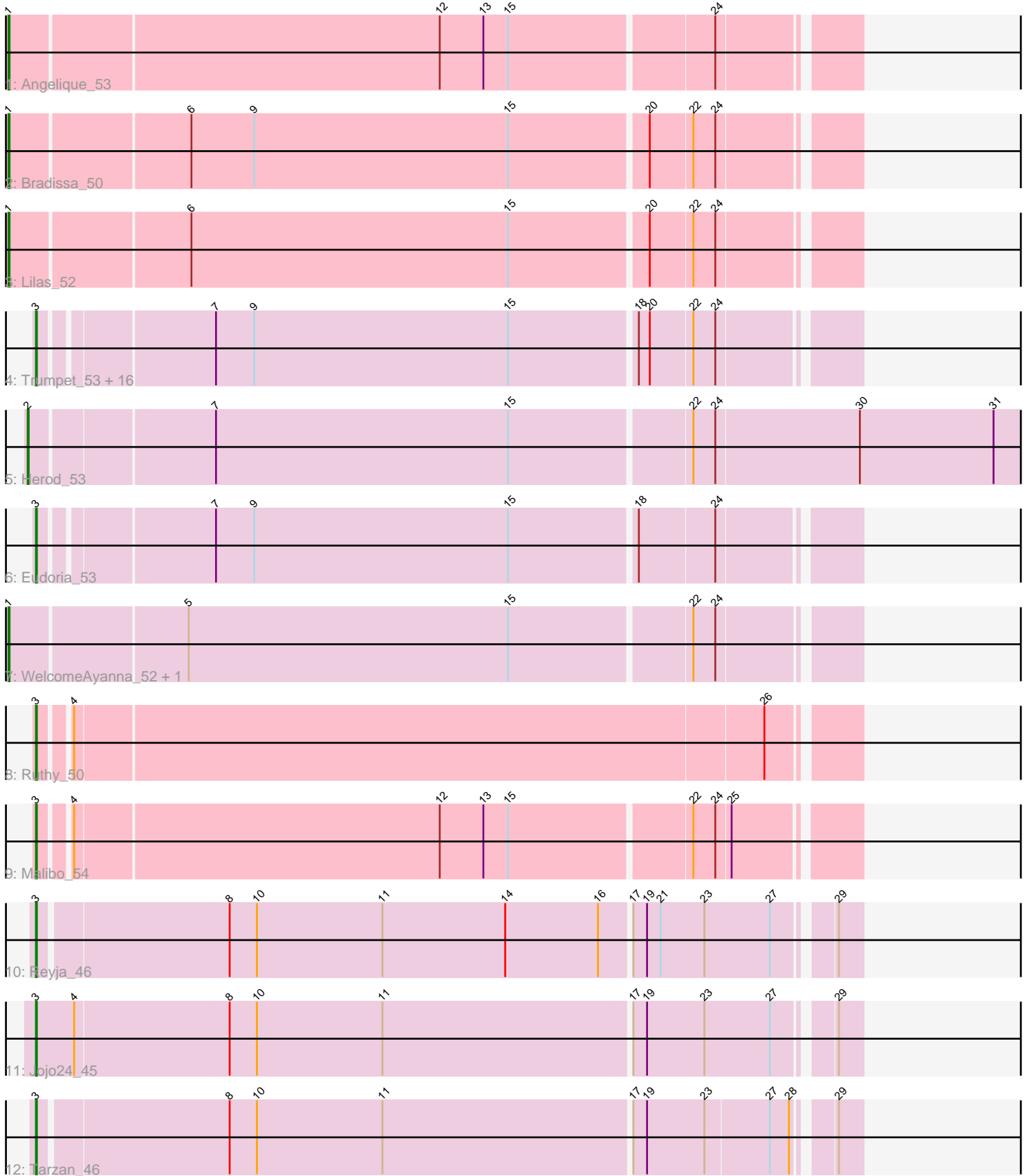


Pham 293049



Note: Tracks are now grouped by subcluster and scaled. Switching in subcluster is indicated by changes in track color. Track scale is now set by default to display the region 30 bp upstream of start 1 to 30 bp downstream of the last possible start. If this default region is judged to be packed too tightly with annotated starts, the track will be further scaled to only show that region of the ORF with annotated starts. This action will be indicated by adding "Zoomed" to the title. For starts, yellow indicates the location of called starts comprised solely of Glimmer/GeneMark auto-annotations, green indicates the location of called starts with at least 1 manual gene annotation.

## Pham 293049 Report

This analysis was run 04/18/26 on database version 643.

Pham number 293049 has 29 members, 0 are drafts.

Phages represented in each track:

- Track 1 : Angelique\_53
- Track 2 : Bradissa\_50
- Track 3 : Lilas\_52
- Track 4 : Trumpet\_53, Yeet412\_48, Neobush\_53, Antonio\_53, Zameen\_53, Bialota\_51, Kita\_54, Suscepit\_53, EdnaMode\_47, Polly\_50, Pickett\_46, Manasvini\_54, Attis\_48, LordFarquaad\_50, Tayonia\_53, SoilAssassin\_48, Zirinka\_50
- Track 5 : Herod\_53
- Track 6 : Eudoria\_53
- Track 7 : WelcomeAyanna\_52, ThankyouJordi\_52
- Track 8 : Ruthy\_50
- Track 9 : Malibo\_54
- Track 10 : Reyja\_46
- Track 11 : Jojo24\_45
- Track 12 : Tarzan\_46

### ***Summary of Final Annotations (See graph section above for start numbers):***

The start number called the most often in the published annotations is 3, it was called in 23 of the 29 non-draft genes in the pham.

Genes that call this "Most Annotated" start:

- Antonio\_53, Attis\_48, Bialota\_51, EdnaMode\_47, Eudoria\_53, Jojo24\_45, Kita\_54, LordFarquaad\_50, Malibo\_54, Manasvini\_54, Neobush\_53, Pickett\_46, Polly\_50, Reyja\_46, Ruthy\_50, SoilAssassin\_48, Suscepit\_53, Tarzan\_46, Tayonia\_53, Trumpet\_53, Yeet412\_48, Zameen\_53, Zirinka\_50,

Genes that have the "Most Annotated" start but do not call it:

- 

Genes that do not have the "Most Annotated" start:

- Angelique\_53, Bradissa\_50, Herod\_53, Lilas\_52, ThankyouJordi\_52, WelcomeAyanna\_52,

### **Summary by start number:**

Start 1:

- Found in 5 of 29 ( 17.2% ) of genes in pham
- Manual Annotations of this start: 5 of 29
- Called 100.0% of time when present
- Phage (with cluster) where this start called: Angelique\_53 (CY1), Bradissa\_50 (CY1), Lilas\_52 (CY1), ThankyouJordi\_52 (CZ1), WelcomeAyanna\_52 (CZ1),

Start 2:

- Found in 1 of 29 ( 3.4% ) of genes in pham
- Manual Annotations of this start: 1 of 29
- Called 100.0% of time when present
- Phage (with cluster) where this start called: Herod\_53 (CZ1),

Start 3:

- Found in 23 of 29 ( 79.3% ) of genes in pham
- Manual Annotations of this start: 23 of 29
- Called 100.0% of time when present
- Phage (with cluster) where this start called: Antonio\_53 (CZ1), Attis\_48 (CZ2), Bialota\_51 (CZ1), EdnaMode\_47 (CZ2), Eudoria\_53 (CZ1), Jojo24\_45 (DY), Kita\_54 (CZ1), LordFarquaad\_50 (CZ2), Malibo\_54 (DW), Manasvini\_54 (CZ1), Neobush\_53 (CZ1), Pickett\_46 (CZ2), Polly\_50 (CZ1), Reyja\_46 (DY), Ruthy\_50 (DW), SoilAssassin\_48 (CZ2), Suscepit\_53 (CZ1), Tarzan\_46 (DY), Tayonia\_53 (CZ1), Trumpet\_53 (CZ1), Yeet412\_48 (CZ2), Zameen\_53 (CZ1), Zirinka\_50 (CZ1),

**Summary by clusters:**

There are 5 clusters represented in this pham: CZ2, DW, CY1, CZ1, DY,

Info for manual annotations of cluster CY1:

- Start number 1 was manually annotated 3 times for cluster CY1.

Info for manual annotations of cluster CZ1:

- Start number 1 was manually annotated 2 times for cluster CZ1.
- Start number 2 was manually annotated 1 time for cluster CZ1.
- Start number 3 was manually annotated 12 times for cluster CZ1.

Info for manual annotations of cluster CZ2:

- Start number 3 was manually annotated 6 times for cluster CZ2.

Info for manual annotations of cluster DW:

- Start number 3 was manually annotated 2 times for cluster DW.

Info for manual annotations of cluster DY:

- Start number 3 was manually annotated 3 times for cluster DY.

**Gene Information:**

Gene: Angelique\_53 Start: 39273, Stop: 40166, Start Num: 1

Candidate Starts for Angelique\_53:

(Start: 1 @39273 has 5 MA's), (12, 39735), (13, 39783), (15, 39810), (24, 40026),

Gene: Antonio\_53 Start: 37328, Stop: 38179, Start Num: 3

Candidate Starts for Antonio\_53:

(Start: 3 @37328 has 23 MA's), (7, 37502), (9, 37544), (15, 37823), (18, 37958), (20, 37970), (22, 38015), (24, 38039),

Gene: Attis\_48 Start: 34461, Stop: 35312, Start Num: 3

Candidate Starts for Attis\_48:

(Start: 3 @34461 has 23 MA's), (7, 34635), (9, 34677), (15, 34956), (18, 35091), (20, 35103), (22, 35148), (24, 35172),

Gene: Bialota\_51 Start: 37960, Stop: 38811, Start Num: 3

Candidate Starts for Bialota\_51:

(Start: 3 @37960 has 23 MA's), (7, 38134), (9, 38176), (15, 38455), (18, 38590), (20, 38602), (22, 38647), (24, 38671),

Gene: Bradissa\_50 Start: 38423, Stop: 39316, Start Num: 1

Candidate Starts for Bradissa\_50:

(Start: 1 @38423 has 5 MA's), (6, 38612), (9, 38681), (15, 38960), (20, 39107), (22, 39152), (24, 39176),

Gene: EdnaMode\_47 Start: 33149, Stop: 34000, Start Num: 3

Candidate Starts for EdnaMode\_47:

(Start: 3 @33149 has 23 MA's), (7, 33323), (9, 33365), (15, 33644), (18, 33779), (20, 33791), (22, 33836), (24, 33860),

Gene: Eudoria\_53 Start: 37328, Stop: 38179, Start Num: 3

Candidate Starts for Eudoria\_53:

(Start: 3 @37328 has 23 MA's), (7, 37502), (9, 37544), (15, 37823), (18, 37958), (24, 38039),

Gene: Herod\_53 Start: 39301, Stop: 40458, Start Num: 2

Candidate Starts for Herod\_53:

(Start: 2 @39301 has 1 MA's), (7, 39493), (15, 39814), (22, 40006), (24, 40030), (30, 40186), (31, 40333),

Gene: Jojo24\_45 Start: 30491, Stop: 31363, Start Num: 3

Candidate Starts for Jojo24\_45:

(Start: 3 @30491 has 23 MA's), (4, 30533), (8, 30698), (10, 30728), (11, 30866), (17, 31133), (19, 31148), (23, 31211), (27, 31283), (29, 31337),

Gene: Kita\_54 Start: 37337, Stop: 38188, Start Num: 3

Candidate Starts for Kita\_54:

(Start: 3 @37337 has 23 MA's), (7, 37511), (9, 37553), (15, 37832), (18, 37967), (20, 37979), (22, 38024), (24, 38048),

Gene: Lilas\_52 Start: 39668, Stop: 40561, Start Num: 1

Candidate Starts for Lilas\_52:

(Start: 1 @39668 has 5 MA's), (6, 39857), (15, 40205), (20, 40352), (22, 40397), (24, 40421),

Gene: LordFarquaad\_50 Start: 34442, Stop: 35293, Start Num: 3

Candidate Starts for LordFarquaad\_50:

(Start: 3 @34442 has 23 MA's), (7, 34616), (9, 34658), (15, 34937), (18, 35072), (20, 35084), (22, 35129), (24, 35153),

Gene: Malibo\_54 Start: 38001, Stop: 38852, Start Num: 3

Candidate Starts for Malibo\_54:

(Start: 3 @38001 has 23 MA's), (4, 38028), (12, 38421), (13, 38469), (15, 38496), (22, 38688), (24, 38712), (25, 38727),

Gene: Manasvini\_54 Start: 37352, Stop: 38203, Start Num: 3

Candidate Starts for Manasvini\_54:

(Start: 3 @37352 has 23 MA's), (7, 37526), (9, 37568), (15, 37847), (18, 37982), (20, 37994), (22, 38039), (24, 38063),

Gene: Neobush\_53 Start: 37322, Stop: 38173, Start Num: 3

Candidate Starts for Neobush\_53:

(Start: 3 @37322 has 23 MA's), (7, 37496), (9, 37538), (15, 37817), (18, 37952), (20, 37964), (22, 38009), (24, 38033),

Gene: Pickett\_46 Start: 31625, Stop: 32476, Start Num: 3

Candidate Starts for Pickett\_46:

(Start: 3 @31625 has 23 MA's), (7, 31799), (9, 31841), (15, 32120), (18, 32255), (20, 32267), (22, 32312), (24, 32336),

Gene: Polly\_50 Start: 36771, Stop: 37622, Start Num: 3

Candidate Starts for Polly\_50:

(Start: 3 @36771 has 23 MA's), (7, 36945), (9, 36987), (15, 37266), (18, 37401), (20, 37413), (22, 37458), (24, 37482),

Gene: Reyja\_46 Start: 30927, Stop: 31790, Start Num: 3

Candidate Starts for Reyja\_46:

(Start: 3 @30927 has 23 MA's), (8, 31125), (10, 31155), (11, 31293), (14, 31428), (16, 31530), (17, 31560), (19, 31575), (21, 31590), (23, 31638), (27, 31710), (29, 31764),

Gene: Ruthy\_50 Start: 37941, Stop: 38801, Start Num: 3

Candidate Starts for Ruthy\_50:

(Start: 3 @37941 has 23 MA's), (4, 37968), (26, 38712),

Gene: SoilAssassin\_48 Start: 34460, Stop: 35311, Start Num: 3

Candidate Starts for SoilAssassin\_48:

(Start: 3 @34460 has 23 MA's), (7, 34634), (9, 34676), (15, 34955), (18, 35090), (20, 35102), (22, 35147), (24, 35171),

Gene: Suscepit\_53 Start: 37329, Stop: 38180, Start Num: 3

Candidate Starts for Suscepit\_53:

(Start: 3 @37329 has 23 MA's), (7, 37503), (9, 37545), (15, 37824), (18, 37959), (20, 37971), (22, 38016), (24, 38040),

Gene: Tarzan\_46 Start: 30318, Stop: 31178, Start Num: 3

Candidate Starts for Tarzan\_46:

(Start: 3 @30318 has 23 MA's), (8, 30516), (10, 30546), (11, 30684), (17, 30951), (19, 30966), (23, 31029), (27, 31098), (28, 31119), (29, 31152),

Gene: Tayonia\_53 Start: 37328, Stop: 38179, Start Num: 3

Candidate Starts for Tayonia\_53:

(Start: 3 @37328 has 23 MA's), (7, 37502), (9, 37544), (15, 37823), (18, 37958), (20, 37970), (22, 38015), (24, 38039),

Gene: ThankyouJordi\_52 Start: 39176, Stop: 40069, Start Num: 1

Candidate Starts for ThankyouJordi\_52:

(Start: 1 @39176 has 5 MA's), (5, 39362), (15, 39713), (22, 39905), (24, 39929),

Gene: Trumpet\_53 Start: 37329, Stop: 38180, Start Num: 3

Candidate Starts for Trumpet\_53:

(Start: 3 @37329 has 23 MA's), (7, 37503), (9, 37545), (15, 37824), (18, 37959), (20, 37971), (22, 38016), (24, 38040),

Gene: WelcomeAyanna\_52 Start: 39323, Stop: 40216, Start Num: 1

Candidate Starts for WelcomeAyanna\_52:

(Start: 1 @39323 has 5 MA's), (5, 39509), (15, 39860), (22, 40052), (24, 40076),

Gene: Yeet412\_48 Start: 34461, Stop: 35312, Start Num: 3

Candidate Starts for Yeet412\_48:

(Start: 3 @34461 has 23 MA's), (7, 34635), (9, 34677), (15, 34956), (18, 35091), (20, 35103), (22, 35148), (24, 35172),

Gene: Zameen\_53 Start: 37328, Stop: 38179, Start Num: 3

Candidate Starts for Zameen\_53:

(Start: 3 @37328 has 23 MA's), (7, 37502), (9, 37544), (15, 37823), (18, 37958), (20, 37970), (22, 38015), (24, 38039),

Gene: Zirinka\_50 Start: 37948, Stop: 38799, Start Num: 3

Candidate Starts for Zirinka\_50:

(Start: 3 @37948 has 23 MA's), (7, 38122), (9, 38164), (15, 38443), (18, 38578), (20, 38590), (22, 38635), (24, 38659),