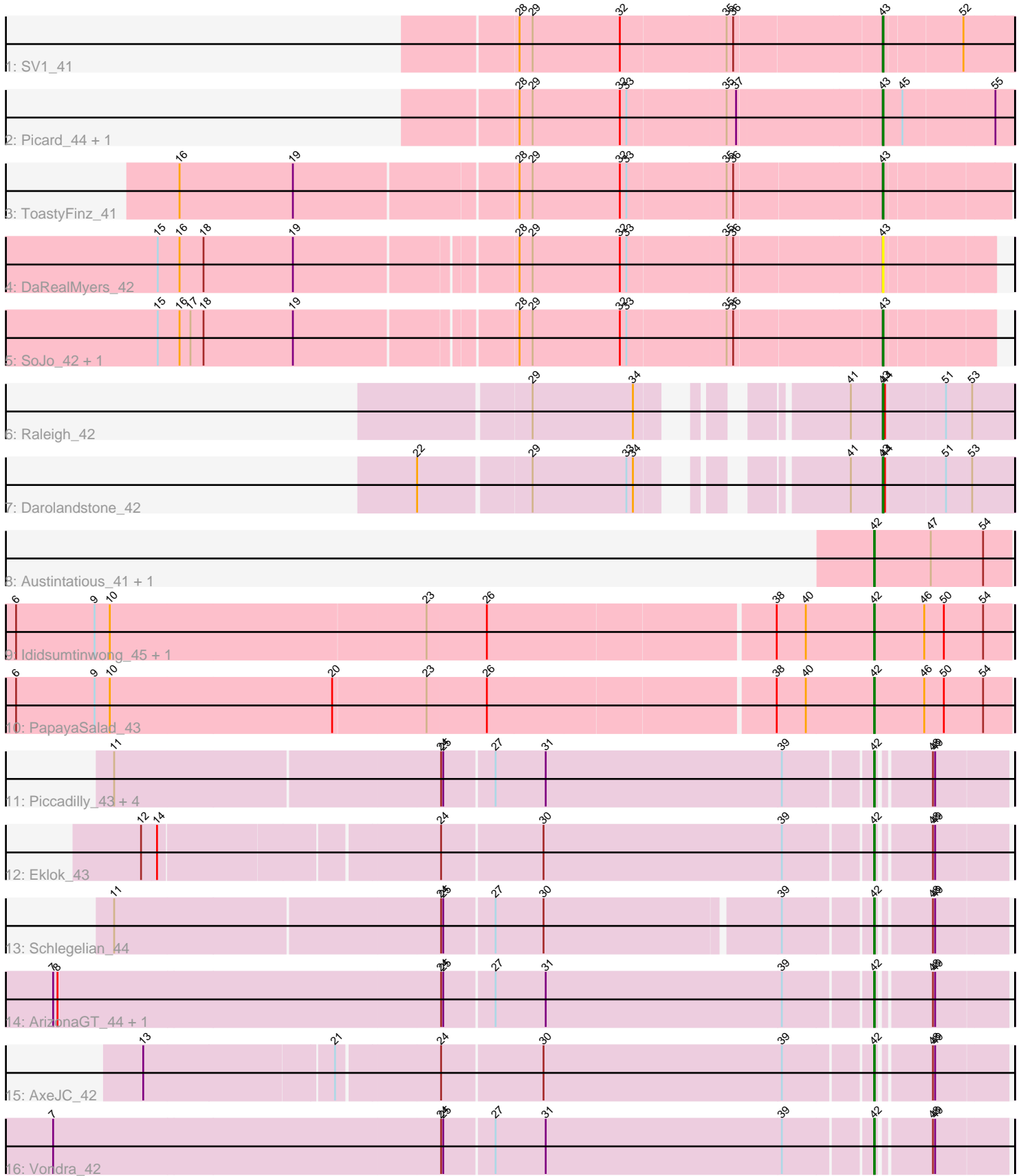


# Zoomed Pham 293075



Note: Tracks are now grouped by subcluster and scaled. Switching in subcluster is indicated by changes in track color. Track scale is now set by default to display the region 30 bp upstream of start 1 to 30 bp downstream of the last possible start. If this default region is judged to be packed too tightly with annotated starts, the track will be further scaled to only show that region of the ORF with annotated starts. This action will be indicated by adding "Zoomed" to the title. For starts, yellow indicates the location of called starts comprised solely of Glimmer/GeneMark auto-annotations, green indicates the location of called starts with at least 1 manual gene annotation.

## Pham 293075 Report

This analysis was run 04/18/26 on database version 643.

WARNING: Pham size does not match number of genes in report. Either unphamerated genes have been added (by you) or starterator has removed genes due to invalid start codon.

Pham number 293075 has 25 members, 1 are drafts.

Phages represented in each track:

- Track 1 : SV1\_41
- Track 2 : Picard\_44, Mojarita\_44
- Track 3 : ToastyFinz\_41
- Track 4 : DaRealMyers\_42
- Track 5 : SoJo\_42, Tubberson\_42
- Track 6 : Raleigh\_42
- Track 7 : Darolandstone\_42
- Track 8 : Austintatious\_41, Lishka\_41
- Track 9 : Ididsumtinwong\_45, Bioscum\_44
- Track 10 : PapayaSalad\_43
- Track 11 : Piccadilly\_43, Eastland\_43, HFrancette\_44, Ignacio\_43, FrumpyGal\_44
- Track 12 : Eklok\_43
- Track 13 : Schlegelian\_44
- Track 14 : ArizonaGT\_44, Cumberbatch\_44
- Track 15 : AxeJC\_42
- Track 16 : Vondra\_42

### ***Summary of Final Annotations (See graph section above for start numbers):***

The start number called the most often in the published annotations is 42, it was called in 16 of the 24 non-draft genes in the pham.

Genes that call this "Most Annotated" start:

- ArizonaGT\_44, Austintatious\_41, AxeJC\_42, Bioscum\_44, Cumberbatch\_44, Eastland\_43, Eklok\_43, FrumpyGal\_44, HFrancette\_44, Ididsumtinwong\_45, Ignacio\_43, Lishka\_41, PapayaSalad\_43, Piccadilly\_43, Schlegelian\_44, Vondra\_42,

Genes that have the "Most Annotated" start but do not call it:

-

Genes that do not have the "Most Annotated" start:

- DaRealMyers\_42, Darolandstone\_42, Mojarita\_44, Picard\_44, Raleigh\_42, SV1\_41, SoJo\_42, ToastyFinz\_41, Tubberson\_42,

### Summary by start number:

Start 42:

- Found in 16 of 25 ( 64.0% ) of genes in pham
- Manual Annotations of this start: 16 of 24
- Called 100.0% of time when present
- Phage (with cluster) where this start called: ArizonaGT\_44 (BP), Austintatious\_41 (BC3), AxeJC\_42 (BP), Bioscum\_44 (BC3), Cumberbatch\_44 (BP), Eastland\_43 (BP), Eklok\_43 (BP), FrumpyGal\_44 (BP), HFrancette\_44 (BP), Ididsumtinwong\_45 (BC3), Ignacio\_43 (BP), Lishka\_41 (BC3), PapayaSalad\_43 (BC3), Piccadilly\_43 (BP), Schlegelian\_44 (BP), Vondra\_42 (BP),

Start 43:

- Found in 9 of 25 ( 36.0% ) of genes in pham
- Manual Annotations of this start: 8 of 24
- Called 100.0% of time when present
- Phage (with cluster) where this start called: DaRealMyers\_42 (BC1), Darolandstone\_42 (BC2), Mojarita\_44 (BC1), Picard\_44 (BC1), Raleigh\_42 (BC2), SV1\_41 (BC1), SoJo\_42 (BC1), ToastyFinz\_41 (BC1), Tubberson\_42 (BC1),

### Summary by clusters:

There are 4 clusters represented in this pham: BP, BC1, BC2, BC3,

Info for manual annotations of cluster BC1:

- Start number 43 was manually annotated 6 times for cluster BC1.

Info for manual annotations of cluster BC2:

- Start number 43 was manually annotated 2 times for cluster BC2.

Info for manual annotations of cluster BC3:

- Start number 42 was manually annotated 5 times for cluster BC3.

Info for manual annotations of cluster BP:

- Start number 42 was manually annotated 11 times for cluster BP.

### Gene Information:

Gene: ArizonaGT\_44 Start: 29964, Stop: 30128, Start Num: 42

Candidate Starts for ArizonaGT\_44:

(2, 28677), (3, 28710), (4, 28776), (7, 28863), (8, 28869), (24, 29388), (25, 29391), (27, 29457), (31, 29526), (39, 29850), (Start: 42 @29964 has 16 MA's), (48, 30030), (49, 30033),

Gene: Austintatious\_41 Start: 27402, Stop: 27590, Start Num: 42

Candidate Starts for Austintatious\_41:

(Start: 42 @27402 has 16 MA's), (47, 27480), (54, 27552),

Gene: AxeJC\_42 Start: 29666, Stop: 29830, Start Num: 42

Candidate Starts for AxeJC\_42:

(13, 28706), (21, 28958), (24, 29090), (30, 29225), (39, 29552), (Start: 42 @29666 has 16 MA's), (48, 29732), (49, 29735),

Gene: Bioscum\_44 Start: 29698, Stop: 29886, Start Num: 42

Candidate Starts for Bioscum\_44:

(4, 28513), (5, 28516), (6, 28549), (9, 28657), (10, 28678), (23, 29104), (26, 29185), (38, 29566), (40, 29605), (Start: 42 @29698 has 16 MA's), (46, 29767), (50, 29794), (54, 29848),

Gene: Cumberbatch\_44 Start: 29964, Stop: 30128, Start Num: 42

Candidate Starts for Cumberbatch\_44:

(2, 28677), (3, 28710), (4, 28776), (7, 28863), (8, 28869), (24, 29388), (25, 29391), (27, 29457), (31, 29526), (39, 29850), (Start: 42 @29964 has 16 MA's), (48, 30030), (49, 30033),

Gene: DaRealMyers\_42 Start: 31200, Stop: 31340, Start Num: 43

Candidate Starts for DaRealMyers\_42:

(15, 30249), (16, 30279), (18, 30312), (19, 30435), (28, 30720), (29, 30738), (32, 30858), (33, 30867), (35, 30999), (36, 31008), (Start: 43 @31200 has 8 MA's),

Gene: Darolandstone\_42 Start: 32791, Stop: 32961, Start Num: 43

Candidate Starts for Darolandstone\_42:

(22, 32269), (29, 32416), (33, 32545), (34, 32554), (41, 32749), (Start: 43 @32791 has 8 MA's), (44, 32794), (51, 32872), (53, 32905),

Gene: Eastland\_43 Start: 29924, Stop: 30088, Start Num: 42

Candidate Starts for Eastland\_43:

(11, 28913), (24, 29348), (25, 29351), (27, 29417), (31, 29486), (39, 29810), (Start: 42 @29924 has 16 MA's), (48, 29990), (49, 29993),

Gene: Eklok\_43 Start: 29723, Stop: 29887, Start Num: 42

Candidate Starts for Eklok\_43:

(12, 28763), (14, 28784), (24, 29147), (30, 29282), (39, 29609), (Start: 42 @29723 has 16 MA's), (48, 29789), (49, 29792),

Gene: FrumpyGal\_44 Start: 29924, Stop: 30088, Start Num: 42

Candidate Starts for FrumpyGal\_44:

(11, 28913), (24, 29348), (25, 29351), (27, 29417), (31, 29486), (39, 29810), (Start: 42 @29924 has 16 MA's), (48, 29990), (49, 29993),

Gene: HFrancette\_44 Start: 30702, Stop: 30866, Start Num: 42

Candidate Starts for HFrancette\_44:

(11, 29691), (24, 30126), (25, 30129), (27, 30195), (31, 30264), (39, 30588), (Start: 42 @30702 has 16 MA's), (48, 30768), (49, 30771),

Gene: Ididsumtinwong\_45 Start: 29698, Stop: 29886, Start Num: 42

Candidate Starts for Ididsumtinwong\_45:

(4, 28513), (5, 28516), (6, 28549), (9, 28657), (10, 28678), (23, 29104), (26, 29185), (38, 29566), (40, 29605), (Start: 42 @29698 has 16 MA's), (46, 29767), (50, 29794), (54, 29848),

Gene: Ignacio\_43 Start: 30605, Stop: 30769, Start Num: 42

Candidate Starts for Ignacio\_43:

(11, 29594), (24, 30029), (25, 30032), (27, 30098), (31, 30167), (39, 30491), (Start: 42 @30605 has 16 MA's), (48, 30671), (49, 30674),

Gene: Lishka\_41 Start: 27402, Stop: 27590, Start Num: 42  
Candidate Starts for Lishka\_41:  
(Start: 42 @27402 has 16 MA's), (47, 27480), (54, 27552),

Gene: Mojorita\_44 Start: 30457, Stop: 30630, Start Num: 43  
Candidate Starts for Mojorita\_44:  
(28, 29977), (29, 29995), (32, 30115), (33, 30124), (35, 30256), (37, 30268), (Start: 43 @30457 has 8 MA's), (45, 30484), (55, 30604),

Gene: PapayaSalad\_43 Start: 29988, Stop: 30176, Start Num: 42  
Candidate Starts for PapayaSalad\_43:  
(4, 28803), (5, 28806), (6, 28839), (9, 28947), (10, 28968), (20, 29271), (23, 29394), (26, 29475), (38, 29856), (40, 29895), (Start: 42 @29988 has 16 MA's), (46, 30057), (50, 30084), (54, 30138),

Gene: Picard\_44 Start: 30655, Stop: 30828, Start Num: 43  
Candidate Starts for Picard\_44:  
(28, 30175), (29, 30193), (32, 30313), (33, 30322), (35, 30454), (37, 30466), (Start: 43 @30655 has 8 MA's), (45, 30682), (55, 30802),

Gene: Piccadilly\_43 Start: 29923, Stop: 30087, Start Num: 42  
Candidate Starts for Piccadilly\_43:  
(11, 28912), (24, 29347), (25, 29350), (27, 29416), (31, 29485), (39, 29809), (Start: 42 @29923 has 16 MA's), (48, 29989), (49, 29992),

Gene: Raleigh\_42 Start: 33159, Stop: 33329, Start Num: 43  
Candidate Starts for Raleigh\_42:  
(29, 32784), (34, 32922), (41, 33117), (Start: 43 @33159 has 8 MA's), (44, 33162), (51, 33240), (53, 33273),

Gene: SV1\_41 Start: 29360, Stop: 29527, Start Num: 43  
Candidate Starts for SV1\_41:  
(28, 28880), (29, 28898), (32, 29018), (35, 29159), (36, 29168), (Start: 43 @29360 has 8 MA's), (52, 29462),

Gene: Schlegelian\_44 Start: 30473, Stop: 30637, Start Num: 42  
Candidate Starts for Schlegelian\_44:  
(11, 29477), (24, 29912), (25, 29915), (27, 29981), (30, 30047), (39, 30359), (Start: 42 @30473 has 16 MA's), (48, 30539), (49, 30542),

Gene: SoJo\_42 Start: 31195, Stop: 31335, Start Num: 43  
Candidate Starts for SoJo\_42:  
(15, 30244), (16, 30274), (17, 30289), (18, 30307), (19, 30430), (28, 30715), (29, 30733), (32, 30853), (33, 30862), (35, 30994), (36, 31003), (Start: 43 @31195 has 8 MA's),

Gene: ToastyFinz\_41 Start: 31997, Stop: 32158, Start Num: 43  
Candidate Starts for ToastyFinz\_41:  
(16, 31067), (19, 31223), (28, 31517), (29, 31535), (32, 31655), (33, 31664), (35, 31796), (36, 31805), (Start: 43 @31997 has 8 MA's),

Gene: Tubberson\_42 Start: 31197, Stop: 31337, Start Num: 43

Candidate Starts for Tubberson\_42:

(15, 30246), (16, 30276), (17, 30291), (18, 30309), (19, 30432), (28, 30717), (29, 30735), (32, 30855),  
(33, 30864), (35, 30996), (36, 31005), (Start: 43 @31197 has 8 MA's),

Gene: Vondra\_42 Start: 29775, Stop: 29939, Start Num: 42

Candidate Starts for Vondra\_42:

(1, 28443), (7, 28674), (24, 29199), (25, 29202), (27, 29268), (31, 29337), (39, 29661), (Start: 42  
@29775 has 16 MA's), (48, 29841), (49, 29844),