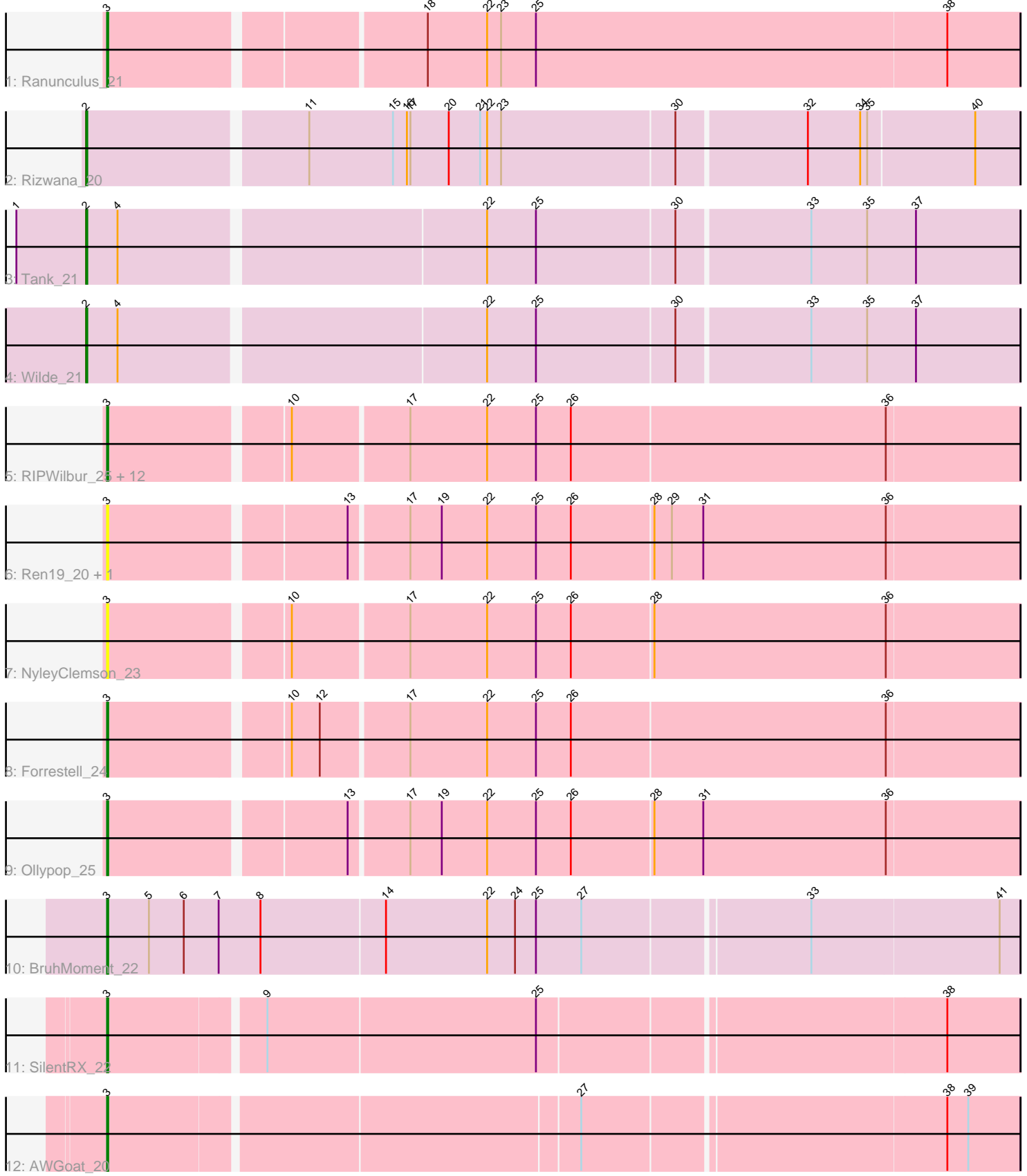


Pham 293094



Note: Tracks are now grouped by subcluster and scaled. Switching in subcluster is indicated by changes in track color. Track scale is now set by default to display the region 30 bp upstream of start 1 to 30 bp downstream of the last possible start. If this default region is judged to be packed too tightly with annotated starts, the track will be further scaled to only show that region of the ORF with annotated starts. This action will be indicated by adding "Zoomed" to the title. For starts, yellow indicates the location of called starts comprised solely of Glimmer/GeneMark auto-annotations, green indicates the location of called starts with at least 1 manual gene annotation.

## Pham 293094 Report

This analysis was run 04/18/26 on database version 643.

Pham number 293094 has 25 members, 8 are drafts.

Phages represented in each track:

- Track 1 : Ranunculus\_21
- Track 2 : Rizwana\_20
- Track 3 : Tank\_21
- Track 4 : Wilde\_21
- Track 5 : RIPWilbur\_25, PhuzzTulsa\_25, Kubulix\_28, BetaFish\_27, Odyssey395\_29, DogYard\_27, Pureglobe5\_29, Pointis\_27, RazzB\_23, Beagle\_28, Hive\_27, Popstraw\_25, MellowYellow\_24
- Track 6 : Ren19\_20, Nikan\_22
- Track 7 : NyleyClemson\_23
- Track 8 : Forrestell\_24
- Track 9 : Ollypop\_25
- Track 10 : BruhMoment\_22
- Track 11 : SilentRX\_22
- Track 12 : AWGoat\_20

### ***Summary of Final Annotations (See graph section above for start numbers):***

The start number called the most often in the published annotations is 3, it was called in 14 of the 17 non-draft genes in the pham.

Genes that call this "Most Annotated" start:

- AWGoat\_20, Beagle\_28, BetaFish\_27, BruhMoment\_22, DogYard\_27, Forrestell\_24, Hive\_27, Kubulix\_28, MellowYellow\_24, Nikan\_22, NyleyClemson\_23, Odyssey395\_29, Ollypop\_25, PhuzzTulsa\_25, Pointis\_27, Popstraw\_25, Pureglobe5\_29, RIPWilbur\_25, Ranunculus\_21, RazzB\_23, Ren19\_20, SilentRX\_22,

Genes that have the "Most Annotated" start but do not call it:

- 

Genes that do not have the "Most Annotated" start:

- Rizwana\_20, Tank\_21, Wilde\_21,

### **Summary by start number:**

#### Start 2:

- Found in 3 of 25 ( 12.0% ) of genes in pham
- Manual Annotations of this start: 3 of 17
- Called 100.0% of time when present
- Phage (with cluster) where this start called: Rizwana\_20 (AP1), Tank\_21 (AP1), Wilde\_21 (AP1),

#### Start 3:

- Found in 22 of 25 ( 88.0% ) of genes in pham
- Manual Annotations of this start: 14 of 17
- Called 100.0% of time when present
- Phage (with cluster) where this start called: AWGoat\_20 (AP4), Beagle\_28 (AP2), BetaFish\_27 (AP2), BruhMoment\_22 (AP3), DogYard\_27 (AP2), Forrestell\_24 (AP2), Hive\_27 (AP2), Kubulix\_28 (AP2), MellowYellow\_24 (AP2), Nikan\_22 (AP2), NyleyClemson\_23 (AP2), Odyssey395\_29 (AP2), Ollypop\_25 (AP2), PhuzzTulsa\_25 (AP2), Pointis\_27 (AP2), Popstraw\_25 (AP2), Pureglobe5\_29 (AP2), RIPWilbur\_25 (AP2), Ranunculus\_21 (AP), RazzB\_23 (AP2), Ren19\_20 (AP2), SilentRX\_22 (AP4),

#### **Summary by clusters:**

There are 5 clusters represented in this pham: AP2, AP, AP1, AP4, AP3,

Info for manual annotations of cluster AP:

- Start number 3 was manually annotated 1 time for cluster AP.

Info for manual annotations of cluster AP1:

- Start number 2 was manually annotated 3 times for cluster AP1.

Info for manual annotations of cluster AP2:

- Start number 3 was manually annotated 10 times for cluster AP2.

Info for manual annotations of cluster AP3:

- Start number 3 was manually annotated 1 time for cluster AP3.

Info for manual annotations of cluster AP4:

- Start number 3 was manually annotated 2 times for cluster AP4.

#### **Gene Information:**

Gene: AWGoat\_20 Start: 15505, Stop: 16254, Start Num: 3

Candidate Starts for AWGoat\_20:

(Start: 3 @15505 has 14 MA's), (27, 15892), (38, 16192), (39, 16210),

Gene: Beagle\_28 Start: 16029, Stop: 16787, Start Num: 3

Candidate Starts for Beagle\_28:

(Start: 3 @16029 has 14 MA's), (10, 16173), (17, 16269), (22, 16335), (25, 16377), (26, 16407), (36, 16674),

Gene: BetaFish\_27 Start: 16232, Stop: 16990, Start Num: 3

Candidate Starts for BetaFish\_27:

(Start: 3 @16232 has 14 MA's), (10, 16376), (17, 16472), (22, 16538), (25, 16580), (26, 16610), (36, 16877),

Gene: BruhMoment\_22 Start: 15455, Stop: 16222, Start Num: 3

Candidate Starts for BruhMoment\_22:

(Start: 3 @15455 has 14 MA's), (5, 15491), (6, 15521), (7, 15551), (8, 15587), (14, 15692), (22, 15779), (24, 15803), (25, 15821), (27, 15860), (33, 16046), (41, 16205),

Gene: DogYard\_27 Start: 16099, Stop: 16857, Start Num: 3

Candidate Starts for DogYard\_27:

(Start: 3 @16099 has 14 MA's), (10, 16243), (17, 16339), (22, 16405), (25, 16447), (26, 16477), (36, 16744),

Gene: Forrestell\_24 Start: 14737, Stop: 15495, Start Num: 3

Candidate Starts for Forrestell\_24:

(Start: 3 @14737 has 14 MA's), (10, 14881), (12, 14905), (17, 14977), (22, 15043), (25, 15085), (26, 15115), (36, 15382),

Gene: Hive\_27 Start: 16113, Stop: 16871, Start Num: 3

Candidate Starts for Hive\_27:

(Start: 3 @16113 has 14 MA's), (10, 16257), (17, 16353), (22, 16419), (25, 16461), (26, 16491), (36, 16758),

Gene: Kubulix\_28 Start: 16222, Stop: 16980, Start Num: 3

Candidate Starts for Kubulix\_28:

(Start: 3 @16222 has 14 MA's), (10, 16366), (17, 16462), (22, 16528), (25, 16570), (26, 16600), (36, 16867),

Gene: MellowYellow\_24 Start: 14764, Stop: 15522, Start Num: 3

Candidate Starts for MellowYellow\_24:

(Start: 3 @14764 has 14 MA's), (10, 14908), (17, 15004), (22, 15070), (25, 15112), (26, 15142), (36, 15409),

Gene: Nikan\_22 Start: 15277, Stop: 16035, Start Num: 3

Candidate Starts for Nikan\_22:

(Start: 3 @15277 has 14 MA's), (13, 15469), (17, 15517), (19, 15544), (22, 15583), (25, 15625), (26, 15655), (28, 15724), (29, 15739), (31, 15766), (36, 15922),

Gene: NyleyClemson\_23 Start: 14709, Stop: 15467, Start Num: 3

Candidate Starts for NyleyClemson\_23:

(Start: 3 @14709 has 14 MA's), (10, 14853), (17, 14949), (22, 15015), (25, 15057), (26, 15087), (28, 15156), (36, 15354),

Gene: Odyssey395\_29 Start: 16224, Stop: 16982, Start Num: 3

Candidate Starts for Odyssey395\_29:

(Start: 3 @16224 has 14 MA's), (10, 16368), (17, 16464), (22, 16530), (25, 16572), (26, 16602), (36, 16869),

Gene: Ollypop\_25 Start: 15239, Stop: 15997, Start Num: 3

Candidate Starts for Ollypop\_25:

(Start: 3 @15239 has 14 MA's), (13, 15431), (17, 15479), (19, 15506), (22, 15545), (25, 15587), (26, 15617), (28, 15686), (31, 15728), (36, 15884),

Gene: PhuzzTulsa\_25 Start: 16011, Stop: 16769, Start Num: 3

Candidate Starts for PhuzzTulsa\_25:

(Start: 3 @16011 has 14 MA's), (10, 16155), (17, 16251), (22, 16317), (25, 16359), (26, 16389), (36, 16656),

Gene: Pointis\_27 Start: 16228, Stop: 16986, Start Num: 3

Candidate Starts for Pointis\_27:

(Start: 3 @16228 has 14 MA's), (10, 16372), (17, 16468), (22, 16534), (25, 16576), (26, 16606), (36, 16873),

Gene: Popstraw\_25 Start: 16014, Stop: 16772, Start Num: 3

Candidate Starts for Popstraw\_25:

(Start: 3 @16014 has 14 MA's), (10, 16158), (17, 16254), (22, 16320), (25, 16362), (26, 16392), (36, 16659),

Gene: Pureglobe5\_29 Start: 16238, Stop: 16996, Start Num: 3

Candidate Starts for Pureglobe5\_29:

(Start: 3 @16238 has 14 MA's), (10, 16382), (17, 16478), (22, 16544), (25, 16586), (26, 16616), (36, 16883),

Gene: RIPWilbur\_25 Start: 15374, Stop: 16132, Start Num: 3

Candidate Starts for RIPWilbur\_25:

(Start: 3 @15374 has 14 MA's), (10, 15518), (17, 15614), (22, 15680), (25, 15722), (26, 15752), (36, 16019),

Gene: Ranunculus\_21 Start: 15118, Stop: 15879, Start Num: 3

Candidate Starts for Ranunculus\_21:

(Start: 3 @15118 has 14 MA's), (18, 15373), (22, 15424), (23, 15436), (25, 15466), (38, 15817),

Gene: RazzB\_23 Start: 14537, Stop: 15295, Start Num: 3

Candidate Starts for RazzB\_23:

(Start: 3 @14537 has 14 MA's), (10, 14681), (17, 14777), (22, 14843), (25, 14885), (26, 14915), (36, 15182),

Gene: Ren19\_20 Start: 15277, Stop: 16035, Start Num: 3

Candidate Starts for Ren19\_20:

(Start: 3 @15277 has 14 MA's), (13, 15469), (17, 15517), (19, 15544), (22, 15583), (25, 15625), (26, 15655), (28, 15724), (29, 15739), (31, 15766), (36, 15922),

Gene: Rizwana\_20 Start: 15024, Stop: 15803, Start Num: 2

Candidate Starts for Rizwana\_20:

(Start: 2 @15024 has 3 MA's), (11, 15204), (15, 15276), (16, 15288), (17, 15291), (20, 15324), (21, 15351), (22, 15357), (23, 15369), (30, 15516), (32, 15624), (34, 15669), (35, 15675), (40, 15765),

Gene: SilentRX\_22 Start: 15268, Stop: 16020, Start Num: 3

Candidate Starts for SilentRX\_22:

(Start: 3 @15268 has 14 MA's), (9, 15394), (25, 15622), (38, 15958),

Gene: Tank\_21 Start: 14915, Stop: 15694, Start Num: 2

Candidate Starts for Tank\_21:

(1, 14855), (Start: 2 @14915 has 3 MA's), (4, 14942), (22, 15245), (25, 15287), (30, 15404), (33, 15515), (35, 15563), (37, 15605),

Gene: Wilde\_21 Start: 14844, Stop: 15623, Start Num: 2

Candidate Starts for Wilde\_21:

(Start: 2 @14844 has 3 MA's), (4, 14871), (22, 15174), (25, 15216), (30, 15333), (33, 15444), (35, 15492), (37, 15534),