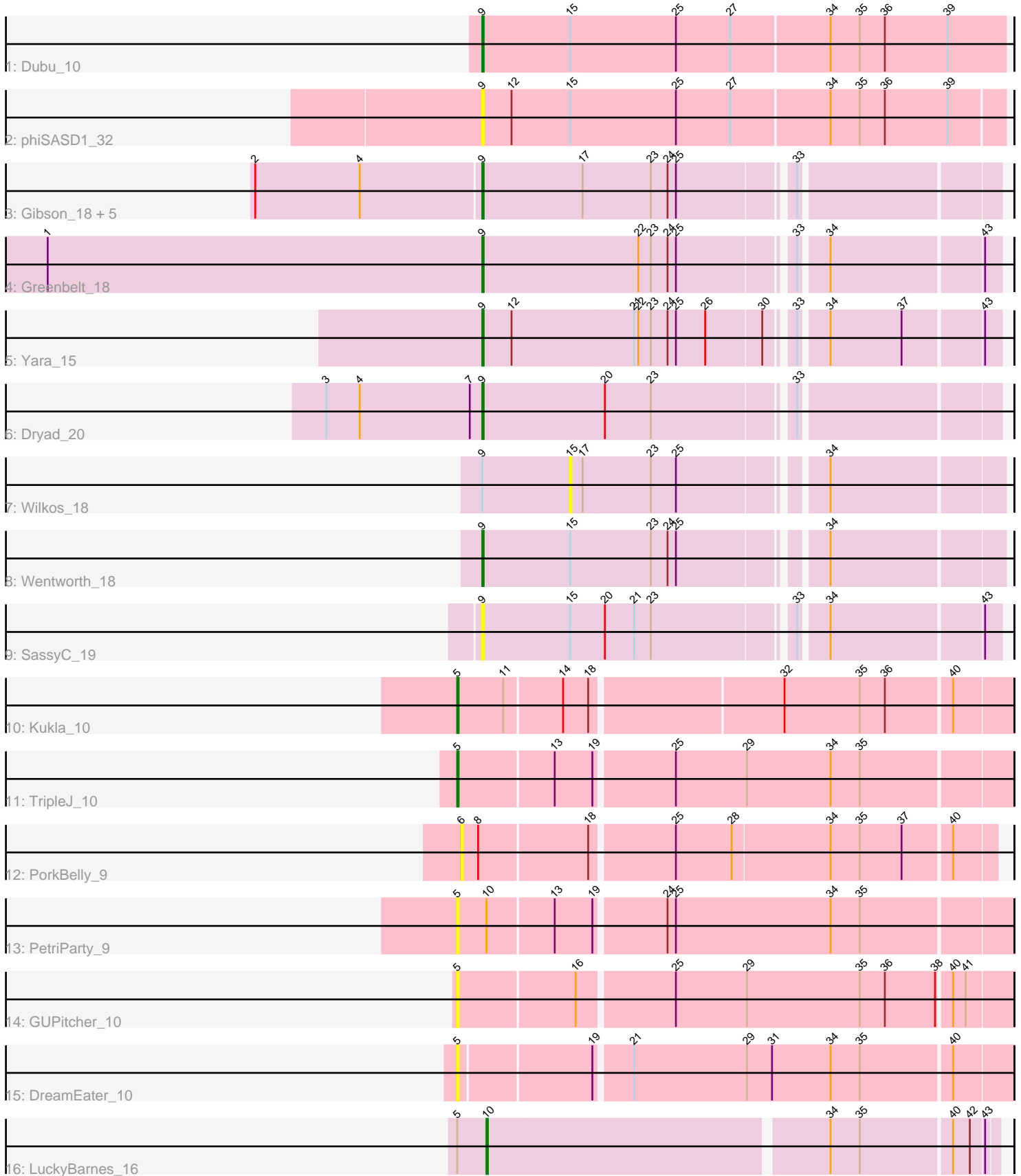


Pham 293154



Note: Tracks are now grouped by subcluster and scaled. Switching in subcluster is indicated by changes in track color. Track scale is now set by default to display the region 30 bp upstream of start 1 to 30 bp downstream of the last possible start. If this default region is judged to be packed too tightly with annotated starts, the track will be further scaled to only show that region of the ORF with annotated starts. This action will be indicated by adding "Zoomed" to the title. For starts, yellow indicates the location of called starts comprised solely of Glimmer/GeneMark auto-annotations, green indicates the location of called starts with at least 1 manual gene annotation.

Pham 293154 Report

This analysis was run 04/18/26 on database version 643.

Pham number 293154 has 21 members, 8 are drafts.

Phages represented in each track:

- Track 1 : Dubu_10
- Track 2 : phiSASD1_32
- Track 3 : Gibson_18, Lizz_18, PHTowN_18, Rooney_18, Virizion_20, ShakeNBake_18
- Track 4 : Greenbelt_18
- Track 5 : Yara_15
- Track 6 : Dryad_20
- Track 7 : Wilkos_18
- Track 8 : Wentworth_18
- Track 9 : SassyC_19
- Track 10 : Kukla_10
- Track 11 : TripleJ_10
- Track 12 : PorkBelly_9
- Track 13 : PetriParty_9
- Track 14 : GUPitcher_10
- Track 15 : DreamEater_10
- Track 16 : LuckyBarnes_16

Summary of Final Annotations (See graph section above for start numbers):

The start number called the most often in the published annotations is 9, it was called in 10 of the 13 non-draft genes in the pham.

Genes that call this "Most Annotated" start:

- Dryad_20, Dubu_10, Gibson_18, Greenbelt_18, Lizz_18, PHTowN_18, Rooney_18, SassyC_19, ShakeNBake_18, Virizion_20, Wentworth_18, Yara_15, phiSASD1_32,

Genes that have the "Most Annotated" start but do not call it:

- Wilkos_18,

Genes that do not have the "Most Annotated" start:

- DreamEater_10, GUPitcher_10, Kukla_10, LuckyBarnes_16, PetriParty_9, PorkBelly_9, TripleJ_10,

Summary by start number:

Start 5:

- Found in 6 of 21 (28.6%) of genes in pham
- Manual Annotations of this start: 2 of 13
- Called 83.3% of time when present
- Phage (with cluster) where this start called: DreamEater_10 (FJ), GUPitcher_10 (FJ), Kukla_10 (FJ), PetriParty_9 (FJ), TripleJ_10 (FJ),

Start 6:

- Found in 1 of 21 (4.8%) of genes in pham
- No Manual Annotations of this start.
- Called 100.0% of time when present
- Phage (with cluster) where this start called: PorkBelly_9 (FJ),

Start 9:

- Found in 14 of 21 (66.7%) of genes in pham
- Manual Annotations of this start: 10 of 13
- Called 92.9% of time when present
- Phage (with cluster) where this start called: Dryad_20 (BN), Dubu_10 (BJ), Gibson_18 (BN), Greenbelt_18 (BN), Lizz_18 (BN), PHTowN_18 (BN), Rooney_18 (BN), SassyC_19 (BN), ShakeNBake_18 (BN), Virizion_20 (BN), Wentworth_18 (BN), Yara_15 (BN), phiSASD1_32 (BJ),

Start 10:

- Found in 2 of 21 (9.5%) of genes in pham
- Manual Annotations of this start: 1 of 13
- Called 50.0% of time when present
- Phage (with cluster) where this start called: LuckyBarnes_16 (singleton),

Start 15:

- Found in 5 of 21 (23.8%) of genes in pham
- No Manual Annotations of this start.
- Called 20.0% of time when present
- Phage (with cluster) where this start called: Wilkos_18 (BN),

Summary by clusters:

There are 4 clusters represented in this pham: BN, FJ, BJ, singleton,

Info for manual annotations of cluster BJ:

- Start number 9 was manually annotated 1 time for cluster BJ.

Info for manual annotations of cluster BN:

- Start number 9 was manually annotated 9 times for cluster BN.

Info for manual annotations of cluster FJ:

- Start number 5 was manually annotated 2 times for cluster FJ.

Gene Information:

Gene: DreamEater_10 Start: 7921, Stop: 8301, Start Num: 5

Candidate Starts for DreamEater_10:

(Start: 5 @7921 has 2 MA's), (19, 8011), (21, 8035), (29, 8116), (31, 8134), (34, 8176), (35, 8197), (40, 8260),

Gene: Dryad_20 Start: 11479, Stop: 11826, Start Num: 9

Candidate Starts for Dryad_20:

(3, 11368), (4, 11392), (7, 11470), (Start: 9 @11479 has 10 MA's), (20, 11566), (23, 11599), (33, 11692),

Gene: Dubu_10 Start: 7230, Stop: 7601, Start Num: 9

Candidate Starts for Dubu_10:

(Start: 9 @7230 has 10 MA's), (15, 7293), (25, 7368), (27, 7407), (34, 7476), (35, 7497), (36, 7515), (39, 7560),

Gene: GUPitcher_10 Start: 7556, Stop: 7939, Start Num: 5

Candidate Starts for GUPitcher_10:

(Start: 5 @7556 has 2 MA's), (16, 7637), (25, 7703), (29, 7754), (35, 7835), (36, 7853), (38, 7889), (40, 7898), (41, 7907),

Gene: Gibson_18 Start: 11037, Stop: 11384, Start Num: 9

Candidate Starts for Gibson_18:

(2, 10878), (4, 10953), (Start: 9 @11037 has 10 MA's), (17, 11109), (23, 11157), (24, 11169), (25, 11175), (33, 11250),

Gene: Greenbelt_18 Start: 10906, Stop: 11253, Start Num: 9

Candidate Starts for Greenbelt_18:

(1, 10594), (Start: 9 @10906 has 10 MA's), (22, 11017), (23, 11026), (24, 11038), (25, 11044), (33, 11119), (34, 11137), (43, 11242),

Gene: Kukla_10 Start: 7582, Stop: 7962, Start Num: 5

Candidate Starts for Kukla_10:

(Start: 5 @7582 has 2 MA's), (11, 7615), (14, 7654), (18, 7672), (32, 7804), (35, 7858), (36, 7876), (40, 7921),

Gene: Lizz_18 Start: 10953, Stop: 11300, Start Num: 9

Candidate Starts for Lizz_18:

(2, 10794), (4, 10869), (Start: 9 @10953 has 10 MA's), (17, 11025), (23, 11073), (24, 11085), (25, 11091), (33, 11166),

Gene: LuckyBarnes_16 Start: 10375, Stop: 10725, Start Num: 10

Candidate Starts for LuckyBarnes_16:

(Start: 5 @10354 has 2 MA's), (Start: 10 @10375 has 1 MA's), (34, 10612), (35, 10633), (40, 10696), (42, 10708), (43, 10717),

Gene: PHTowN_18 Start: 10953, Stop: 11300, Start Num: 9

Candidate Starts for PHTowN_18:

(2, 10794), (4, 10869), (Start: 9 @10953 has 10 MA's), (17, 11025), (23, 11073), (24, 11085), (25, 11091), (33, 11166),

Gene: PetriParty_9 Start: 7863, Stop: 8246, Start Num: 5

Candidate Starts for PetriParty_9:

(Start: 5 @7863 has 2 MA's), (Start: 10 @7884 has 1 MA's), (13, 7929), (19, 7956), (24, 8004), (25, 8010), (34, 8121), (35, 8142),

Gene: PorkBelly_9 Start: 7596, Stop: 7961, Start Num: 6

Candidate Starts for PorkBelly_9:

(6, 7596), (8, 7608), (18, 7683), (25, 7740), (28, 7779), (34, 7848), (35, 7869), (37, 7899), (40, 7932),

Gene: Rooney_18 Start: 11034, Stop: 11381, Start Num: 9

Candidate Starts for Rooney_18:

(2, 10875), (4, 10950), (Start: 9 @11034 has 10 MA's), (17, 11106), (23, 11154), (24, 11166), (25, 11172), (33, 11247),

Gene: SassyC_19 Start: 10744, Stop: 11091, Start Num: 9

Candidate Starts for SassyC_19:

(Start: 9 @10744 has 10 MA's), (15, 10807), (20, 10831), (21, 10852), (23, 10864), (33, 10957), (34, 10975), (43, 11080),

Gene: ShakeNBake_18 Start: 10953, Stop: 11300, Start Num: 9

Candidate Starts for ShakeNBake_18:

(2, 10794), (4, 10869), (Start: 9 @10953 has 10 MA's), (17, 11025), (23, 11073), (24, 11085), (25, 11091), (33, 11166),

Gene: TripleJ_10 Start: 7875, Stop: 8258, Start Num: 5

Candidate Starts for TripleJ_10:

(Start: 5 @7875 has 2 MA's), (13, 7941), (19, 7968), (25, 8022), (29, 8073), (34, 8133), (35, 8154),

Gene: Virizion_20 Start: 11267, Stop: 11614, Start Num: 9

Candidate Starts for Virizion_20:

(2, 11108), (4, 11183), (Start: 9 @11267 has 10 MA's), (17, 11339), (23, 11387), (24, 11399), (25, 11405), (33, 11480),

Gene: Wentworth_18 Start: 10743, Stop: 11093, Start Num: 9

Candidate Starts for Wentworth_18:

(Start: 9 @10743 has 10 MA's), (15, 10806), (23, 10863), (24, 10875), (25, 10881), (34, 10974),

Gene: Wilkos_18 Start: 10975, Stop: 11262, Start Num: 15

Candidate Starts for Wilkos_18:

(Start: 9 @10912 has 10 MA's), (15, 10975), (17, 10984), (23, 11032), (25, 11050), (34, 11143),

Gene: Yara_15 Start: 9856, Stop: 10203, Start Num: 9

Candidate Starts for Yara_15:

(Start: 9 @9856 has 10 MA's), (12, 9877), (21, 9964), (22, 9967), (23, 9976), (24, 9988), (25, 9994), (26, 10015), (30, 10054), (33, 10069), (34, 10087), (37, 10138), (43, 10192),

Gene: phiSASD1_32 Start: 7773, Stop: 8141, Start Num: 9

Candidate Starts for phiSASD1_32:

(Start: 9 @7773 has 10 MA's), (12, 7794), (15, 7836), (25, 7911), (27, 7950), (34, 8019), (35, 8040), (36, 8058), (39, 8103),