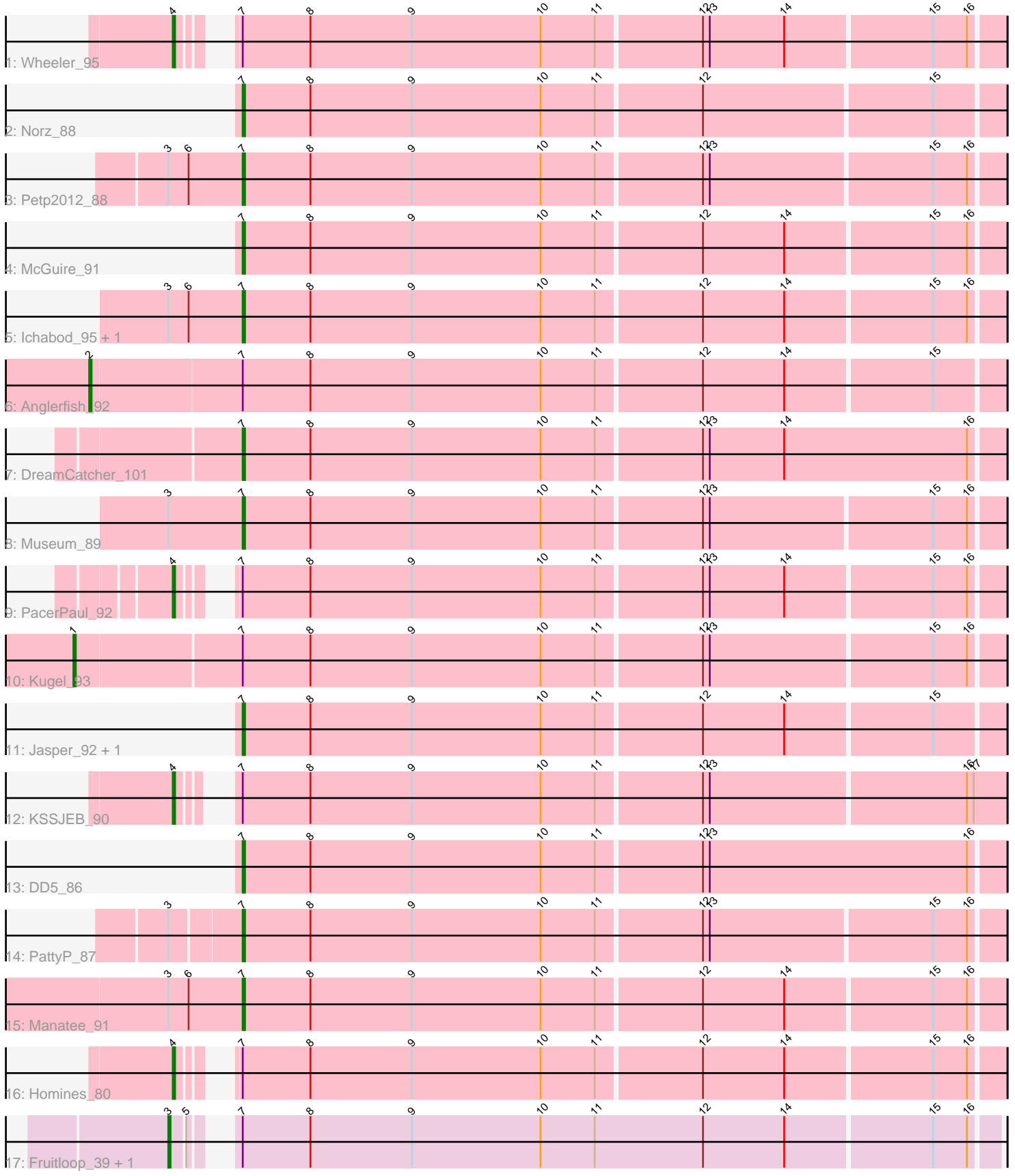


Pham 293171



Note: Tracks are now grouped by subcluster and scaled. Switching in subcluster is indicated by changes in track color. Track scale is now set by default to display the region 30 bp upstream of start 1 to 30 bp downstream of the last possible start. If this default region is judged to be packed too tightly with annotated starts, the track will be further scaled to only show that region of the ORF with annotated starts. This action will be indicated by adding "Zoomed" to the title. For starts, yellow indicates the location of called starts comprised solely of Glimmer/GeneMark auto-annotations, green indicates the location of called starts with at least 1 manual gene annotation.

## Pham 293171 Report

This analysis was run 04/18/26 on database version 643.

Pham number 293171 has 20 members, 0 are drafts.

Phages represented in each track:

- Track 1 : Wheeler\_95
- Track 2 : Norz\_88
- Track 3 : Petp2012\_88
- Track 4 : McGuire\_91
- Track 5 : Ichabod\_95, Dynamix\_91
- Track 6 : Anglerfish\_92
- Track 7 : DreamCatcher\_101
- Track 8 : Museum\_89
- Track 9 : PacerPaul\_92
- Track 10 : Kugel\_93
- Track 11 : Jasper\_92, Dreamboat\_92
- Track 12 : KSSJEB\_90
- Track 13 : DD5\_86
- Track 14 : PattyP\_87
- Track 15 : Manatee\_91
- Track 16 : Homines\_80
- Track 17 : Fruitloop\_39, Melissauren88\_41

### ***Summary of Final Annotations (See graph section above for start numbers):***

The start number called the most often in the published annotations is 7, it was called in 12 of the 20 non-draft genes in the pham.

Genes that call this "Most Annotated" start:

- DD5\_86, DreamCatcher\_101, Dreamboat\_92, Dynamix\_91, Ichabod\_95, Jasper\_92, Manatee\_91, McGuire\_91, Museum\_89, Norz\_88, PattyP\_87, Petp2012\_88,

Genes that have the "Most Annotated" start but do not call it:

- Anglerfish\_92, Fruitloop\_39, Homines\_80, KSSJEB\_90, Kugel\_93, Melissauren88\_41, PacerPaul\_92, Wheeler\_95,

Genes that do not have the "Most Annotated" start:

-

### Summary by start number:

#### Start 1:

- Found in 1 of 20 ( 5.0% ) of genes in pham
- Manual Annotations of this start: 1 of 20
- Called 100.0% of time when present
- Phage (with cluster) where this start called: Kugel\_93 (A1),

#### Start 2:

- Found in 1 of 20 ( 5.0% ) of genes in pham
- Manual Annotations of this start: 1 of 20
- Called 100.0% of time when present
- Phage (with cluster) where this start called: Anglerfish\_92 (A1),

#### Start 3:

- Found in 8 of 20 ( 40.0% ) of genes in pham
- Manual Annotations of this start: 2 of 20
- Called 25.0% of time when present
- Phage (with cluster) where this start called: Fruitloop\_39 (F1), Melissau88\_41 (F1),

#### Start 4:

- Found in 4 of 20 ( 20.0% ) of genes in pham
- Manual Annotations of this start: 4 of 20
- Called 100.0% of time when present
- Phage (with cluster) where this start called: Homines\_80 (A1), KSSJEB\_90 (A1), PacerPaul\_92 (A1), Wheeler\_95 (A1),

#### Start 7:

- Found in 20 of 20 ( 100.0% ) of genes in pham
- Manual Annotations of this start: 12 of 20
- Called 60.0% of time when present
- Phage (with cluster) where this start called: DD5\_86 (A1), DreamCatcher\_101 (A1), Dreamboat\_92 (A1), Dynamix\_91 (A1), Ichabod\_95 (A1), Jasper\_92 (A1), Manatee\_91 (A1), McGuire\_91 (A1), Museum\_89 (A1), Norz\_88 (A1), PattyP\_87 (A1), Petp2012\_88 (A1),

### Summary by clusters:

There are 2 clusters represented in this pham: A1, F1,

#### Info for manual annotations of cluster A1:

- Start number 1 was manually annotated 1 time for cluster A1.
- Start number 2 was manually annotated 1 time for cluster A1.
- Start number 4 was manually annotated 4 times for cluster A1.
- Start number 7 was manually annotated 12 times for cluster A1.

#### Info for manual annotations of cluster F1:

- Start number 3 was manually annotated 2 times for cluster F1.

### **Gene Information:**

Gene: Anglerfish\_92 Start: 51776, Stop: 51381, Start Num: 2

Candidate Starts for Anglerfish\_92:

(Start: 2 @51776 has 1 MA's), (Start: 7 @51710 has 12 MA's), (8, 51680), (9, 51635), (10, 51578), (11, 51554), (12, 51509), (14, 51473), (15, 51410),

Gene: DD5\_86 Start: 50934, Stop: 50602, Start Num: 7

Candidate Starts for DD5\_86:

(Start: 7 @50934 has 12 MA's), (8, 50904), (9, 50859), (10, 50802), (11, 50778), (12, 50733), (13, 50730), (16, 50616),

Gene: DreamCatcher\_101 Start: 52742, Stop: 52410, Start Num: 7

Candidate Starts for DreamCatcher\_101:

(Start: 7 @52742 has 12 MA's), (8, 52712), (9, 52667), (10, 52610), (11, 52586), (12, 52541), (13, 52538), (14, 52505), (16, 52424),

Gene: Dreamboat\_92 Start: 50157, Stop: 49828, Start Num: 7

Candidate Starts for Dreamboat\_92:

(Start: 7 @50157 has 12 MA's), (8, 50127), (9, 50082), (10, 50025), (11, 50001), (12, 49956), (14, 49920), (15, 49857),

Gene: Dynamix\_91 Start: 49949, Stop: 49620, Start Num: 7

Candidate Starts for Dynamix\_91:

(Start: 3 @49982 has 2 MA's), (6, 49973), (Start: 7 @49949 has 12 MA's), (8, 49919), (9, 49874), (10, 49817), (11, 49793), (12, 49748), (14, 49712), (15, 49649), (16, 49634),

Gene: Fruitloop\_39 Start: 32115, Stop: 31771, Start Num: 3

Candidate Starts for Fruitloop\_39:

(Start: 3 @32115 has 2 MA's), (5, 32109), (Start: 7 @32100 has 12 MA's), (8, 32070), (9, 32025), (10, 31968), (11, 31944), (12, 31896), (14, 31860), (15, 31797), (16, 31782),

Gene: Homines\_80 Start: 46179, Stop: 45838, Start Num: 4

Candidate Starts for Homines\_80:

(Start: 4 @46179 has 4 MA's), (Start: 7 @46167 has 12 MA's), (8, 46137), (9, 46092), (10, 46035), (11, 46011), (12, 45966), (14, 45930), (15, 45867), (16, 45852),

Gene: Ichabod\_95 Start: 52639, Stop: 52310, Start Num: 7

Candidate Starts for Ichabod\_95:

(Start: 3 @52672 has 2 MA's), (6, 52663), (Start: 7 @52639 has 12 MA's), (8, 52609), (9, 52564), (10, 52507), (11, 52483), (12, 52438), (14, 52402), (15, 52339), (16, 52324),

Gene: Jasper\_92 Start: 50043, Stop: 49714, Start Num: 7

Candidate Starts for Jasper\_92:

(Start: 7 @50043 has 12 MA's), (8, 50013), (9, 49968), (10, 49911), (11, 49887), (12, 49842), (14, 49806), (15, 49743),

Gene: KSSJEB\_90 Start: 50492, Stop: 50148, Start Num: 4

Candidate Starts for KSSJEB\_90:

(Start: 4 @50492 has 4 MA's), (Start: 7 @50480 has 12 MA's), (8, 50450), (9, 50405), (10, 50348), (11, 50324), (12, 50279), (13, 50276), (16, 50165), (17, 50162),

Gene: Kugel\_93 Start: 51783, Stop: 51382, Start Num: 1

Candidate Starts for Kugel\_93:

(Start: 1 @51783 has 1 MA's), (Start: 7 @51711 has 12 MA's), (8, 51681), (9, 51636), (10, 51579), (11, 51555), (12, 51510), (13, 51507), (15, 51411), (16, 51396),

Gene: Manatee\_91 Start: 50362, Stop: 50033, Start Num: 7

Candidate Starts for Manatee\_91:

(Start: 3 @50395 has 2 MA's), (6, 50386), (Start: 7 @50362 has 12 MA's), (8, 50332), (9, 50287), (10, 50230), (11, 50206), (12, 50161), (14, 50125), (15, 50062), (16, 50047),

Gene: McGuire\_91 Start: 50596, Stop: 50267, Start Num: 7

Candidate Starts for McGuire\_91:

(Start: 7 @50596 has 12 MA's), (8, 50566), (9, 50521), (10, 50464), (11, 50440), (12, 50395), (14, 50359), (15, 50296), (16, 50281),

Gene: Melissau88\_41 Start: 32111, Stop: 31767, Start Num: 3

Candidate Starts for Melissau88\_41:

(Start: 3 @32111 has 2 MA's), (5, 32105), (Start: 7 @32096 has 12 MA's), (8, 32066), (9, 32021), (10, 31964), (11, 31940), (12, 31892), (14, 31856), (15, 31793), (16, 31778),

Gene: Museum\_89 Start: 50756, Stop: 50427, Start Num: 7

Candidate Starts for Museum\_89:

(Start: 3 @50789 has 2 MA's), (Start: 7 @50756 has 12 MA's), (8, 50726), (9, 50681), (10, 50624), (11, 50600), (12, 50555), (13, 50552), (15, 50456), (16, 50441),

Gene: Norz\_88 Start: 53001, Stop: 52672, Start Num: 7

Candidate Starts for Norz\_88:

(Start: 7 @53001 has 12 MA's), (8, 52971), (9, 52926), (10, 52869), (11, 52845), (12, 52800), (15, 52701),

Gene: PacerPaul\_92 Start: 52112, Stop: 51771, Start Num: 4

Candidate Starts for PacerPaul\_92:

(Start: 4 @52112 has 4 MA's), (Start: 7 @52100 has 12 MA's), (8, 52070), (9, 52025), (10, 51968), (11, 51944), (12, 51899), (13, 51896), (14, 51863), (15, 51800), (16, 51785),

Gene: PattyP\_87 Start: 50303, Stop: 49974, Start Num: 7

Candidate Starts for PattyP\_87:

(Start: 3 @50333 has 2 MA's), (Start: 7 @50303 has 12 MA's), (8, 50273), (9, 50228), (10, 50171), (11, 50147), (12, 50102), (13, 50099), (15, 50003), (16, 49988),

Gene: Petp2012\_88 Start: 51046, Stop: 50717, Start Num: 7

Candidate Starts for Petp2012\_88:

(Start: 3 @51079 has 2 MA's), (6, 51070), (Start: 7 @51046 has 12 MA's), (8, 51016), (9, 50971), (10, 50914), (11, 50890), (12, 50845), (13, 50842), (15, 50746), (16, 50731),

Gene: Wheeler\_95 Start: 52965, Stop: 52624, Start Num: 4

Candidate Starts for Wheeler\_95:

(Start: 4 @52965 has 4 MA's), (Start: 7 @52953 has 12 MA's), (8, 52923), (9, 52878), (10, 52821), (11, 52797), (12, 52752), (13, 52749), (14, 52716), (15, 52653), (16, 52638),