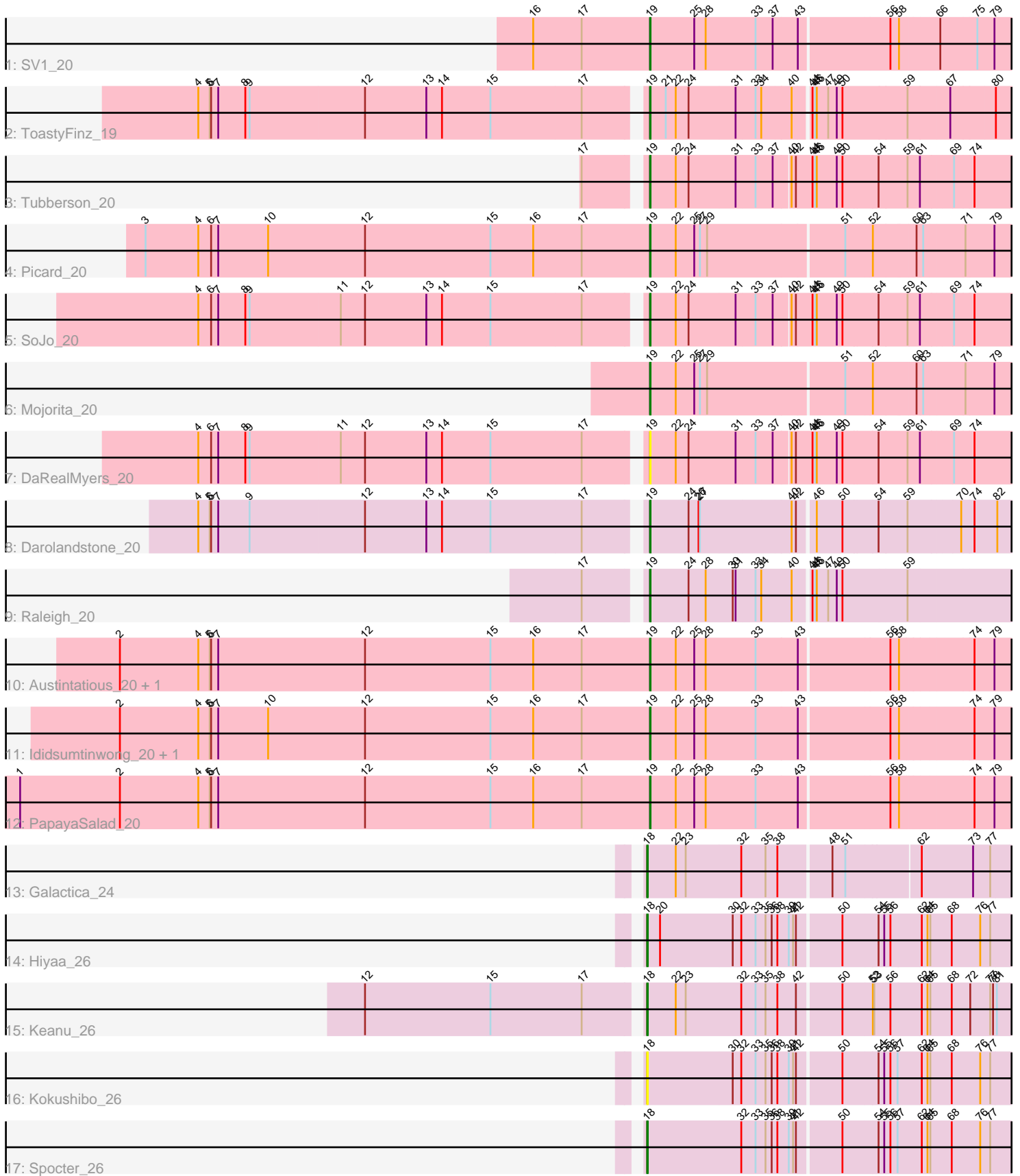


Pham 293172



Note: Tracks are now grouped by subcluster and scaled. Switching in subcluster is indicated by changes in track color. Track scale is now set by default to display the region 30 bp upstream of start 1 to 30 bp downstream of the last possible start. If this default region is judged to be packed too tightly with annotated starts, the track will be further scaled to only show that region of the ORF with annotated starts. This action will be indicated by adding "Zoomed" to the title. For starts, yellow indicates the location of called starts comprised solely of Glimmer/GeneMark auto-annotations, green indicates the location of called starts with at least 1 manual gene annotation.

Pham 293172 Report

This analysis was run 04/18/26 on database version 643.

Pham number 293172 has 19 members, 2 are drafts.

Phages represented in each track:

- Track 1 : SV1_20
- Track 2 : ToastyFinz_19
- Track 3 : Tubberson_20
- Track 4 : Picard_20
- Track 5 : SoJo_20
- Track 6 : Mojourita_20
- Track 7 : DaRealMyers_20
- Track 8 : Darolandstone_20
- Track 9 : Raleigh_20
- Track 10 : Austintatious_20, Lishka_20
- Track 11 : Ididsumtinwong_20, Bioscum_20
- Track 12 : PapayaSalad_20
- Track 13 : Galactica_24
- Track 14 : Hiyaa_26
- Track 15 : Keanu_26
- Track 16 : Kokushibo_26
- Track 17 : Spocter_26

Summary of Final Annotations (See graph section above for start numbers):

The start number called the most often in the published annotations is 19, it was called in 13 of the 17 non-draft genes in the pham.

Genes that call this "Most Annotated" start:

- Austintatious_20, Bioscum_20, DaRealMyers_20, Darolandstone_20, Ididsumtinwong_20, Lishka_20, Mojourita_20, PapayaSalad_20, Picard_20, Raleigh_20, SV1_20, SoJo_20, ToastyFinz_19, Tubberson_20,

Genes that have the "Most Annotated" start but do not call it:

-

Genes that do not have the "Most Annotated" start:

- Galactica_24, Hiyaa_26, Keanu_26, Kokushibo_26, Spocter_26,

Summary by start number:

Start 18:

- Found in 5 of 19 (26.3%) of genes in pham
- Manual Annotations of this start: 4 of 17
- Called 100.0% of time when present
- Phage (with cluster) where this start called: Galactica_24 (BQ), Hiyaa_26 (BQ), Keanu_26 (BQ), Kokushibo_26 (BQ), Spocter_26 (BQ),

Start 19:

- Found in 14 of 19 (73.7%) of genes in pham
- Manual Annotations of this start: 13 of 17
- Called 100.0% of time when present
- Phage (with cluster) where this start called: Austintatious_20 (BC3), Bioscum_20 (BC3), DaRealMyers_20 (BC1), Darolandstone_20 (BC2), Ididsumtinwong_20 (BC3), Lishka_20 (BC3), Mojorita_20 (BC1), PapayaSalad_20 (BC3), Picard_20 (BC1), Raleigh_20 (BC2), SV1_20 (BC1), SoJo_20 (BC1), ToastyFinz_19 (BC1), Tubberson_20 (BC1),

Summary by clusters:

There are 4 clusters represented in this pham: BC1, BQ, BC2, BC3,

Info for manual annotations of cluster BC1:

- Start number 19 was manually annotated 6 times for cluster BC1.

Info for manual annotations of cluster BC2:

- Start number 19 was manually annotated 2 times for cluster BC2.

Info for manual annotations of cluster BC3:

- Start number 19 was manually annotated 5 times for cluster BC3.

Info for manual annotations of cluster BQ:

- Start number 18 was manually annotated 4 times for cluster BQ.

Gene Information:

Gene: Austintatious_20 Start: 15331, Stop: 16053, Start Num: 19

Candidate Starts for Austintatious_20:

(2, 14215), (4, 14380), (5, 14404), (6, 14407), (7, 14422), (12, 14731), (15, 14995), (16, 15085), (17, 15187), (Start: 19 @15331 has 13 MA's), (22, 15385), (25, 15424), (28, 15448), (33, 15553), (43, 15640), (56, 15820), (58, 15838), (74, 15979), (79, 16021),

Gene: Bioscum_20 Start: 15367, Stop: 16089, Start Num: 19

Candidate Starts for Bioscum_20:

(2, 14251), (4, 14416), (5, 14440), (6, 14443), (7, 14458), (10, 14563), (12, 14767), (15, 15031), (16, 15121), (17, 15223), (Start: 19 @15367 has 13 MA's), (22, 15421), (25, 15460), (28, 15484), (33, 15589), (43, 15676), (56, 15856), (58, 15874), (74, 16015), (79, 16057),

Gene: DaRealMyers_20 Start: 15747, Stop: 16487, Start Num: 19

Candidate Starts for DaRealMyers_20:

(4, 14841), (6, 14868), (7, 14883), (8, 14937), (9, 14946), (11, 15135), (12, 15186), (13, 15315), (14, 15348), (15, 15447), (17, 15636), (Start: 19 @15747 has 13 MA's), (22, 15801), (24, 15828), (31, 15924), (33, 15963), (37, 15999), (40, 16029), (42, 16038), (44, 16071), (45, 16077), (46, 16080), (49, 16122), (50, 16134), (54, 16206), (59, 16266), (61, 16290), (69, 16353), (74, 16389),

Gene: Darolandstone_20 Start: 15910, Stop: 16635, Start Num: 19

Candidate Starts for Darolandstone_20:

(4, 15007), (5, 15031), (6, 15034), (7, 15049), (9, 15112), (12, 15352), (13, 15481), (14, 15514), (15, 15613), (17, 15802), (Start: 19 @15910 has 13 MA's), (24, 15991), (26, 16012), (27, 16015), (40, 16192), (42, 16201), (46, 16231), (50, 16285), (54, 16357), (59, 16417), (70, 16519), (74, 16540), (82, 16588),

Gene: Galactica_24 Start: 21220, Stop: 21954, Start Num: 18

Candidate Starts for Galactica_24:

(Start: 18 @21220 has 4 MA's), (22, 21280), (23, 21301), (32, 21415), (35, 21466), (38, 21490), (48, 21595), (51, 21622), (62, 21769), (73, 21877), (77, 21913),

Gene: Hiyaa_26 Start: 22261, Stop: 23001, Start Num: 18

Candidate Starts for Hiyaa_26:

(Start: 18 @22261 has 4 MA's), (20, 22288), (30, 22438), (32, 22456), (33, 22486), (35, 22507), (36, 22519), (38, 22531), (39, 22555), (41, 22564), (42, 22570), (50, 22657), (54, 22729), (55, 22741), (56, 22753), (62, 22816), (64, 22828), (65, 22834), (68, 22879), (76, 22939), (77, 22960),

Gene: Ididsumtinwong_20 Start: 15367, Stop: 16089, Start Num: 19

Candidate Starts for Ididsumtinwong_20:

(2, 14251), (4, 14416), (5, 14440), (6, 14443), (7, 14458), (10, 14563), (12, 14767), (15, 15031), (16, 15121), (17, 15223), (Start: 19 @15367 has 13 MA's), (22, 15421), (25, 15460), (28, 15484), (33, 15589), (43, 15676), (56, 15856), (58, 15874), (74, 16015), (79, 16057),

Gene: Keanu_26 Start: 22296, Stop: 23036, Start Num: 18

Candidate Starts for Keanu_26:

(12, 21735), (15, 21996), (17, 22188), (Start: 18 @22296 has 4 MA's), (22, 22356), (23, 22377), (32, 22491), (33, 22521), (35, 22542), (38, 22566), (42, 22605), (50, 22692), (52, 22752), (53, 22755), (56, 22788), (62, 22851), (64, 22863), (65, 22869), (68, 22914), (72, 22953), (77, 22995), (78, 23001), (81, 23007),

Gene: Kokushibo_26 Start: 22276, Stop: 23016, Start Num: 18

Candidate Starts for Kokushibo_26:

(Start: 18 @22276 has 4 MA's), (30, 22453), (32, 22471), (33, 22501), (35, 22522), (36, 22534), (38, 22546), (39, 22570), (41, 22579), (42, 22585), (50, 22672), (54, 22744), (55, 22756), (56, 22768), (57, 22783), (62, 22831), (64, 22843), (65, 22849), (68, 22894), (76, 22954), (77, 22975),

Gene: Lishka_20 Start: 15331, Stop: 16053, Start Num: 19

Candidate Starts for Lishka_20:

(2, 14215), (4, 14380), (5, 14404), (6, 14407), (7, 14422), (12, 14731), (15, 14995), (16, 15085), (17, 15187), (Start: 19 @15331 has 13 MA's), (22, 15385), (25, 15424), (28, 15448), (33, 15553), (43, 15640), (56, 15820), (58, 15838), (74, 15979), (79, 16021),

Gene: Mojerita_20 Start: 15469, Stop: 16191, Start Num: 19

Candidate Starts for Mojerita_20:

(Start: 19 @15469 has 13 MA's), (22, 15523), (25, 15562), (27, 15574), (29, 15589), (51, 15868), (52, 15922), (60, 16006), (63, 16018), (71, 16099), (79, 16159),

Gene: PapayaSalad_20 Start: 15342, Stop: 16064, Start Num: 19

Candidate Starts for PapayaSalad_20:

(1, 14016), (2, 14226), (4, 14391), (5, 14415), (6, 14418), (7, 14433), (12, 14742), (15, 15006), (16, 15096), (17, 15198), (Start: 19 @15342 has 13 MA's), (22, 15396), (25, 15435), (28, 15459), (33, 15564), (43, 15651), (56, 15831), (58, 15849), (74, 15990), (79, 16032),

Gene: Picard_20 Start: 15463, Stop: 16185, Start Num: 19

Candidate Starts for Picard_20:

(3, 14401), (4, 14512), (6, 14539), (7, 14554), (10, 14659), (12, 14863), (15, 15127), (16, 15217), (17, 15319), (Start: 19 @15463 has 13 MA's), (22, 15517), (25, 15556), (27, 15568), (29, 15583), (51, 15862), (52, 15916), (60, 16000), (63, 16012), (71, 16093), (79, 16153),

Gene: Raleigh_20 Start: 16095, Stop: 16919, Start Num: 19

Candidate Starts for Raleigh_20:

(17, 15987), (Start: 19 @16095 has 13 MA's), (24, 16176), (28, 16212), (30, 16266), (31, 16272), (33, 16311), (34, 16323), (40, 16383), (44, 16413), (45, 16419), (46, 16422), (47, 16446), (49, 16464), (50, 16476), (59, 16611),

Gene: SV1_20 Start: 15575, Stop: 16297, Start Num: 19

Candidate Starts for SV1_20:

(16, 15329), (17, 15431), (Start: 19 @15575 has 13 MA's), (25, 15668), (28, 15692), (33, 15797), (37, 15833), (43, 15884), (56, 16064), (58, 16082), (66, 16154), (75, 16229), (79, 16265),

Gene: SoJo_20 Start: 15748, Stop: 16488, Start Num: 19

Candidate Starts for SoJo_20:

(4, 14842), (6, 14869), (7, 14884), (8, 14938), (9, 14947), (11, 15136), (12, 15187), (13, 15316), (14, 15349), (15, 15448), (17, 15637), (Start: 19 @15748 has 13 MA's), (22, 15802), (24, 15829), (31, 15925), (33, 15964), (37, 16000), (40, 16030), (42, 16039), (44, 16072), (45, 16078), (46, 16081), (49, 16123), (50, 16135), (54, 16207), (59, 16267), (61, 16291), (69, 16354), (74, 16390),

Gene: Spocter_26 Start: 22249, Stop: 22989, Start Num: 18

Candidate Starts for Spocter_26:

(Start: 18 @22249 has 4 MA's), (32, 22444), (33, 22474), (35, 22495), (36, 22507), (38, 22519), (39, 22543), (41, 22552), (42, 22558), (50, 22645), (54, 22717), (55, 22729), (56, 22741), (57, 22756), (62, 22804), (64, 22816), (65, 22822), (68, 22867), (76, 22927), (77, 22948),

Gene: ToastyFinz_19 Start: 15425, Stop: 16273, Start Num: 19

Candidate Starts for ToastyFinz_19:

(4, 14519), (5, 14543), (6, 14546), (7, 14561), (8, 14615), (9, 14624), (12, 14864), (13, 14993), (14, 15026), (15, 15125), (17, 15314), (Start: 19 @15425 has 13 MA's), (21, 15458), (22, 15479), (24, 15506), (31, 15602), (33, 15641), (34, 15653), (40, 15713), (44, 15743), (45, 15749), (46, 15752), (47, 15776), (49, 15794), (50, 15806), (59, 15941), (67, 16025), (80, 16115),

Gene: Tubberson_20 Start: 15747, Stop: 16487, Start Num: 19

Candidate Starts for Tubberson_20:

(17, 15636), (Start: 19 @15747 has 13 MA's), (22, 15801), (24, 15828), (31, 15924), (33, 15963), (37, 15999), (40, 16029), (42, 16038), (44, 16071), (45, 16077), (46, 16080), (49, 16122), (50, 16134), (54, 16206), (59, 16266), (61, 16290), (69, 16353), (74, 16389),