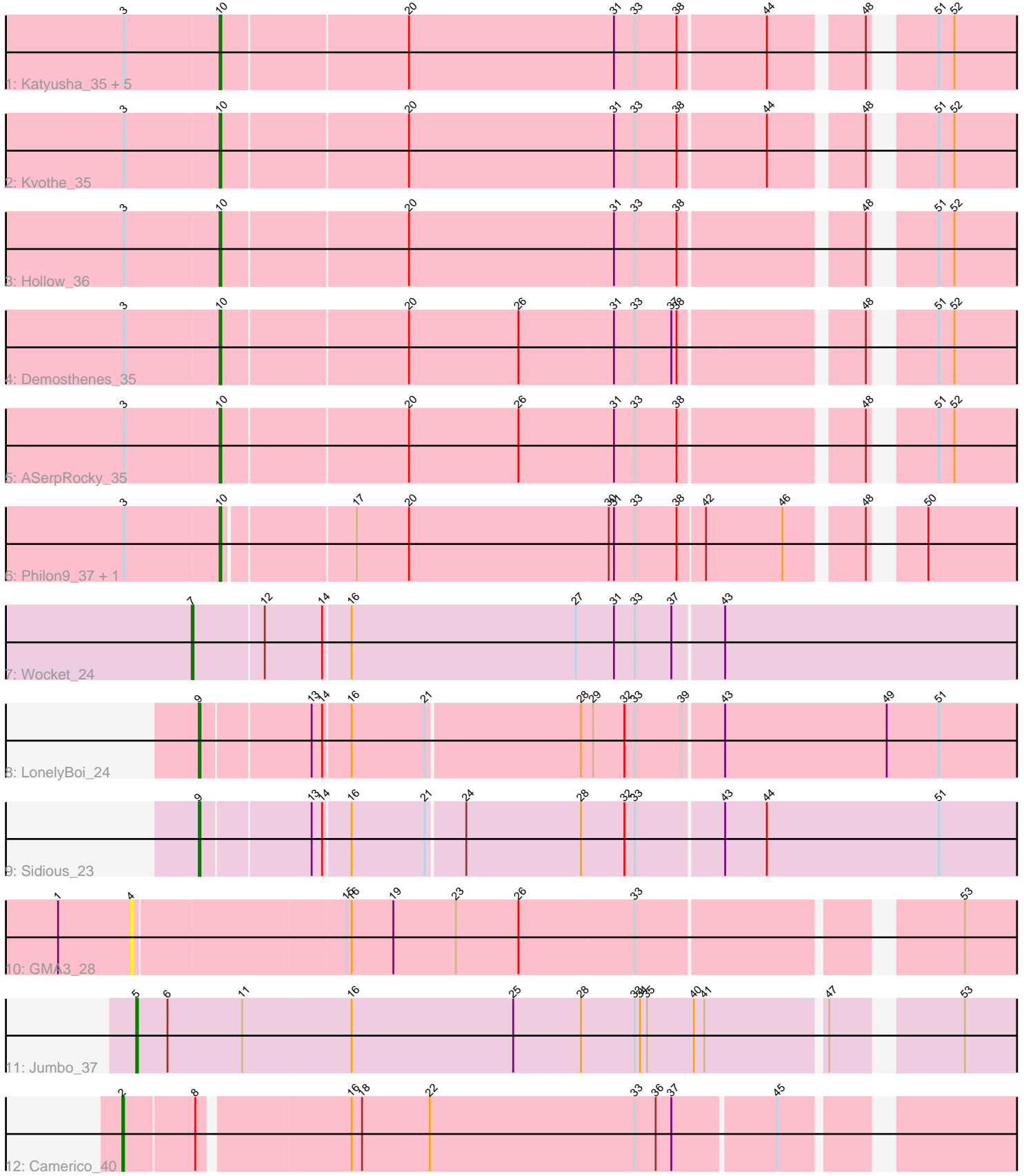


Pham 293185



Note: Tracks are now grouped by subcluster and scaled. Switching in subcluster is indicated by changes in track color. Track scale is now set by default to display the region 30 bp upstream of start 1 to 30 bp downstream of the last possible start. If this default region is judged to be packed too tightly with annotated starts, the track will be further scaled to only show that region of the ORF with annotated starts. This action will be indicated by adding "Zoomed" to the title. For starts, yellow indicates the location of called starts comprised solely of Glimmer/GeneMark auto-annotations, green indicates the location of called starts with at least 1 manual gene annotation.

Pham 293185 Report

This analysis was run 04/18/26 on database version 643.

Pham number 293185 has 18 members, 1 are drafts.

Phages represented in each track:

- Track 1 : Katyusha_35, Benczkowski14_35, Teatealatte_35, Teech_35, Niagara_35, Tredge_35
- Track 2 : Kvothe_35
- Track 3 : Hollow_36
- Track 4 : Demosthenes_35
- Track 5 : ASerpRocky_35
- Track 6 : Philon9_37, Vitaenoi_37
- Track 7 : Wocket_24
- Track 8 : LonelyBoi_24
- Track 9 : Sidious_23
- Track 10 : GMA3_28
- Track 11 : Jumbo_37
- Track 12 : Camerico_40

Summary of Final Annotations (See graph section above for start numbers):

The start number called the most often in the published annotations is 10, it was called in 12 of the 17 non-draft genes in the pham.

Genes that call this "Most Annotated" start:

- ASerpRocky_35, Benczkowski14_35, Demosthenes_35, Hollow_36, Katyusha_35, Kvothe_35, Niagara_35, Philon9_37, Teatealatte_35, Teech_35, Tredge_35, Vitaenoi_37,

Genes that have the "Most Annotated" start but do not call it:

-

Genes that do not have the "Most Annotated" start:

- Camerico_40, GMA3_28, Jumbo_37, LonelyBoi_24, Sidious_23, Wocket_24,

Summary by start number:

Start 2:

- Found in 1 of 18 (5.6%) of genes in pham

- Manual Annotations of this start: 1 of 17
- Called 100.0% of time when present
- Phage (with cluster) where this start called: Camerico_40 (DF4),

Start 4:

- Found in 1 of 18 (5.6%) of genes in pham
- No Manual Annotations of this start.
- Called 100.0% of time when present
- Phage (with cluster) where this start called: GMA3_28 (DF2),

Start 5:

- Found in 1 of 18 (5.6%) of genes in pham
- Manual Annotations of this start: 1 of 17
- Called 100.0% of time when present
- Phage (with cluster) where this start called: Jumbo_37 (DF3),

Start 7:

- Found in 1 of 18 (5.6%) of genes in pham
- Manual Annotations of this start: 1 of 17
- Called 100.0% of time when present
- Phage (with cluster) where this start called: Wocket_24 (CV),

Start 9:

- Found in 2 of 18 (11.1%) of genes in pham
- Manual Annotations of this start: 2 of 17
- Called 100.0% of time when present
- Phage (with cluster) where this start called: LonelyBoi_24 (CY7), Sidious_23 (CZ7),

Start 10:

- Found in 12 of 18 (66.7%) of genes in pham
- Manual Annotations of this start: 12 of 17
- Called 100.0% of time when present
- Phage (with cluster) where this start called: ASerpRocky_35 (CS4), Benczkowski14_35 (CS4), Demosthenes_35 (CS4), Hollow_36 (CS4), Katyusha_35 (CS4), Kvothe_35 (CS4), Niagara_35 (CS4), Philon9_37 (CS4), Teatealatte_35 (CS4), Teech_35 (CS4), Tredge_35 (CS4), Vitaenoi_37 (CS4),

Summary by clusters:

There are 7 clusters represented in this pham: CY7, DF4, CZ7, DF3, DF2, CS4, CV,

Info for manual annotations of cluster CS4:

- Start number 10 was manually annotated 12 times for cluster CS4.

Info for manual annotations of cluster CV:

- Start number 7 was manually annotated 1 time for cluster CV.

Info for manual annotations of cluster CY7:

- Start number 9 was manually annotated 1 time for cluster CY7.

Info for manual annotations of cluster CZ7:

- Start number 9 was manually annotated 1 time for cluster CZ7.

Info for manual annotations of cluster DF3:

•Start number 5 was manually annotated 1 time for cluster DF3.

Info for manual annotations of cluster DF4:

•Start number 2 was manually annotated 1 time for cluster DF4.

Gene Information:

Gene: ASerpRocky_35 Start: 41389, Stop: 41841, Start Num: 10

Candidate Starts for ASerpRocky_35:

(3, 41335), (Start: 10 @41389 has 12 MA's), (20, 41494), (26, 41557), (31, 41611), (33, 41623), (38, 41647), (48, 41743), (51, 41770), (52, 41779),

Gene: Benczkowski14_35 Start: 41422, Stop: 41874, Start Num: 10

Candidate Starts for Benczkowski14_35:

(3, 41368), (Start: 10 @41422 has 12 MA's), (20, 41527), (31, 41644), (33, 41656), (38, 41680), (44, 41728), (48, 41776), (51, 41803), (52, 41812),

Gene: Camerico_40 Start: 43256, Stop: 43774, Start Num: 2

Candidate Starts for Camerico_40:

(Start: 2 @43256 has 1 MA's), (8, 43295), (16, 43376), (18, 43382), (22, 43421), (33, 43538), (36, 43550), (37, 43559), (45, 43616),

Gene: Demosthenes_35 Start: 41362, Stop: 41814, Start Num: 10

Candidate Starts for Demosthenes_35:

(3, 41308), (Start: 10 @41362 has 12 MA's), (20, 41467), (26, 41530), (31, 41584), (33, 41596), (37, 41617), (38, 41620), (48, 41716), (51, 41743), (52, 41752),

Gene: GMA3_28 Start: 36944, Stop: 37429, Start Num: 4

Candidate Starts for GMA3_28:

(1, 36902), (4, 36944), (15, 37061), (16, 37064), (19, 37088), (23, 37124), (26, 37160), (33, 37226), (53, 37391),

Gene: Hollow_36 Start: 41768, Stop: 42220, Start Num: 10

Candidate Starts for Hollow_36:

(3, 41714), (Start: 10 @41768 has 12 MA's), (20, 41873), (31, 41990), (33, 42002), (38, 42026), (48, 42122), (51, 42149), (52, 42158),

Gene: Jumbo_37 Start: 42278, Stop: 42769, Start Num: 5

Candidate Starts for Jumbo_37:

(Start: 5 @42278 has 1 MA's), (6, 42296), (11, 42338), (16, 42398), (25, 42491), (28, 42530), (33, 42560), (34, 42563), (35, 42566), (40, 42593), (41, 42599), (47, 42665), (53, 42728),

Gene: Katyusha_35 Start: 41422, Stop: 41874, Start Num: 10

Candidate Starts for Katyusha_35:

(3, 41368), (Start: 10 @41422 has 12 MA's), (20, 41527), (31, 41644), (33, 41656), (38, 41680), (44, 41728), (48, 41776), (51, 41803), (52, 41812),

Gene: Kvothe_35 Start: 41321, Stop: 41773, Start Num: 10

Candidate Starts for Kvothe_35:

(3, 41267), (Start: 10 @41321 has 12 MA's), (20, 41426), (31, 41543), (33, 41555), (38, 41579), (44, 41627), (48, 41675), (51, 41702), (52, 41711),

Gene: LonelyBoi_24 Start: 21255, Stop: 21728, Start Num: 9

Candidate Starts for LonelyBoi_24:

(Start: 9 @21255 has 2 MA's), (13, 21315), (14, 21321), (16, 21336), (21, 21378), (28, 21465), (29, 21471), (32, 21489), (33, 21495), (39, 21522), (43, 21543), (49, 21636), (51, 21666),

Gene: Niagara_35 Start: 41379, Stop: 41831, Start Num: 10

Candidate Starts for Niagara_35:

(3, 41325), (Start: 10 @41379 has 12 MA's), (20, 41484), (31, 41601), (33, 41613), (38, 41637), (44, 41685), (48, 41733), (51, 41760), (52, 41769),

Gene: Philon9_37 Start: 42589, Stop: 43029, Start Num: 10

Candidate Starts for Philon9_37:

(3, 42535), (Start: 10 @42589 has 12 MA's), (17, 42661), (20, 42691), (30, 42805), (31, 42808), (33, 42820), (38, 42844), (42, 42859), (46, 42901), (48, 42940), (50, 42961),

Gene: Sidious_23 Start: 20906, Stop: 21379, Start Num: 9

Candidate Starts for Sidious_23:

(Start: 9 @20906 has 2 MA's), (13, 20966), (14, 20972), (16, 20987), (21, 21029), (24, 21050), (28, 21116), (32, 21140), (33, 21146), (43, 21194), (44, 21218), (51, 21317),

Gene: Teatealatte_35 Start: 41324, Stop: 41776, Start Num: 10

Candidate Starts for Teatealatte_35:

(3, 41270), (Start: 10 @41324 has 12 MA's), (20, 41429), (31, 41546), (33, 41558), (38, 41582), (44, 41630), (48, 41678), (51, 41705), (52, 41714),

Gene: Teech_35 Start: 41125, Stop: 41577, Start Num: 10

Candidate Starts for Teech_35:

(3, 41071), (Start: 10 @41125 has 12 MA's), (20, 41230), (31, 41347), (33, 41359), (38, 41383), (44, 41431), (48, 41479), (51, 41506), (52, 41515),

Gene: Tredge_35 Start: 41324, Stop: 41776, Start Num: 10

Candidate Starts for Tredge_35:

(3, 41270), (Start: 10 @41324 has 12 MA's), (20, 41429), (31, 41546), (33, 41558), (38, 41582), (44, 41630), (48, 41678), (51, 41705), (52, 41714),

Gene: Vitaenoi_37 Start: 42588, Stop: 43028, Start Num: 10

Candidate Starts for Vitaenoi_37:

(3, 42534), (Start: 10 @42588 has 12 MA's), (17, 42660), (20, 42690), (30, 42804), (31, 42807), (33, 42819), (38, 42843), (42, 42858), (46, 42900), (48, 42939), (50, 42960),

Gene: Wocket_24 Start: 20570, Stop: 21052, Start Num: 7

Candidate Starts for Wocket_24:

(Start: 7 @20570 has 1 MA's), (12, 20609), (14, 20642), (16, 20657), (27, 20786), (31, 20807), (33, 20819), (37, 20840), (43, 20867),