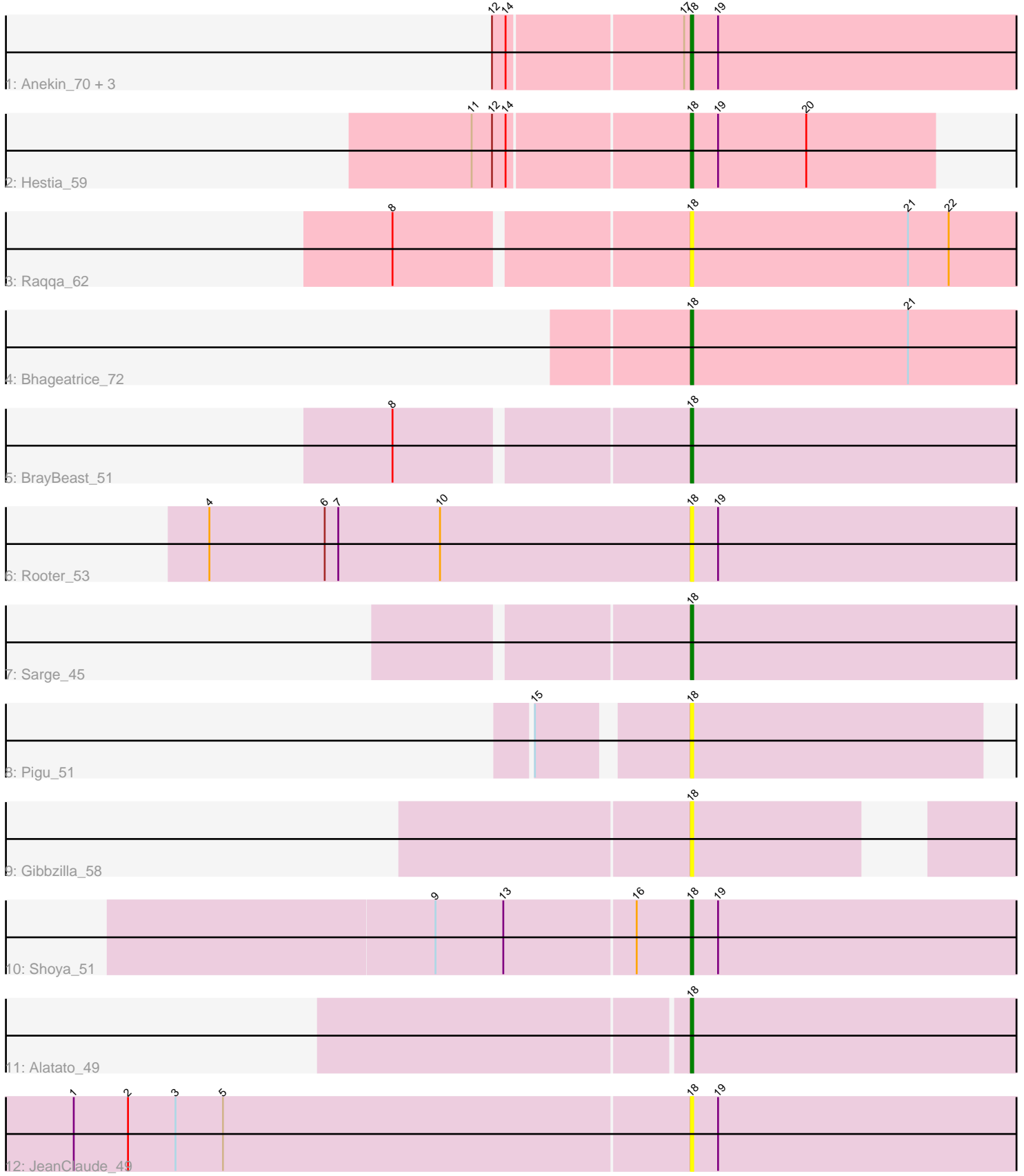


Pham 293251



Note: Tracks are now grouped by subcluster and scaled. Switching in subcluster is indicated by changes in track color. Track scale is now set by default to display the region 30 bp upstream of start 1 to 30 bp downstream of the last possible start. If this default region is judged to be packed too tightly with annotated starts, the track will be further scaled to only show that region of the ORF with annotated starts. This action will be indicated by adding "Zoomed" to the title. For starts, yellow indicates the location of called starts comprised solely of Glimmer/GeneMark auto-annotations, green indicates the location of called starts with at least 1 manual gene annotation.

## Pham 293251 Report

This analysis was run 04/18/26 on database version 643.

Pham number 293251 has 15 members, 7 are drafts.

Phages represented in each track:

- Track 1 : Anekin\_70, BlueShadow\_66, CosmicBrownie\_63, Nyilah\_69
- Track 2 : Hestia\_59
- Track 3 : Raqqa\_62
- Track 4 : Bhageatrice\_72
- Track 5 : BrayBeast\_51
- Track 6 : Rooter\_53
- Track 7 : Sarge\_45
- Track 8 : Pigu\_51
- Track 9 : Gibbzilla\_58
- Track 10 : Shoya\_51
- Track 11 : Alatato\_49
- Track 12 : JeanClaude\_49

### ***Summary of Final Annotations (See graph section above for start numbers):***

The start number called the most often in the published annotations is 18, it was called in 8 of the 8 non-draft genes in the pham.

Genes that call this "Most Annotated" start:

- Alatato\_49, Anekin\_70, Bhageatrice\_72, BlueShadow\_66, BrayBeast\_51, CosmicBrownie\_63, Gibbzilla\_58, Hestia\_59, JeanClaude\_49, Nyilah\_69, Pigu\_51, Raqqa\_62, Rooter\_53, Sarge\_45, Shoya\_51,

Genes that have the "Most Annotated" start but do not call it:

- 

Genes that do not have the "Most Annotated" start:

- 

### **Summary by start number:**

Start 18:

- Found in 15 of 15 ( 100.0% ) of genes in pham
- Manual Annotations of this start: 8 of 8

- Called 100.0% of time when present
- Phage (with cluster) where this start called: Alatato\_49 (FB), Anekin\_70 (AY), Bhageatrice\_72 (AY), BlueShadow\_66 (AY), BrayBeast\_51 (FB), CosmicBrownie\_63 (AY), Gibbzilla\_58 (FB), Hestia\_59 (AY), JeanClaude\_49 (FB), Nyilah\_69 (AY), Pigu\_51 (FB), Raqqa\_62 (AY), Rooter\_53 (FB), Sarge\_45 (FB), Shoya\_51 (FB),

### **Summary by clusters:**

There are 2 clusters represented in this pham: AY, FB,

Info for manual annotations of cluster AY:

- Start number 18 was manually annotated 4 times for cluster AY.

Info for manual annotations of cluster FB:

- Start number 18 was manually annotated 4 times for cluster FB.

### **Gene Information:**

Gene: Alatato\_49 Start: 29606, Stop: 29755, Start Num: 18

Candidate Starts for Alatato\_49:

(Start: 18 @29606 has 8 MA's),

Gene: Anekin\_70 Start: 36609, Stop: 36758, Start Num: 18

Candidate Starts for Anekin\_70:

(12, 36525), (14, 36531), (17, 36606), (Start: 18 @36609 has 8 MA's), (19, 36621),

Gene: Bhageatrice\_72 Start: 38560, Stop: 38709, Start Num: 18

Candidate Starts for Bhageatrice\_72:

(Start: 18 @38560 has 8 MA's), (21, 38656),

Gene: BlueShadow\_66 Start: 35620, Stop: 35769, Start Num: 18

Candidate Starts for BlueShadow\_66:

(12, 35536), (14, 35542), (17, 35617), (Start: 18 @35620 has 8 MA's), (19, 35632),

Gene: BrayBeast\_51 Start: 29661, Stop: 29810, Start Num: 18

Candidate Starts for BrayBeast\_51:

(8, 29538), (Start: 18 @29661 has 8 MA's),

Gene: CosmicBrownie\_63 Start: 34343, Stop: 34492, Start Num: 18

Candidate Starts for CosmicBrownie\_63:

(12, 34259), (14, 34265), (17, 34340), (Start: 18 @34343 has 8 MA's), (19, 34355),

Gene: Gibbzilla\_58 Start: 30990, Stop: 31109, Start Num: 18

Candidate Starts for Gibbzilla\_58:

(Start: 18 @30990 has 8 MA's),

Gene: Hestia\_59 Start: 33177, Stop: 33284, Start Num: 18

Candidate Starts for Hestia\_59:

(11, 33084), (12, 33093), (14, 33099), (Start: 18 @33177 has 8 MA's), (19, 33189), (20, 33228),

Gene: JeanClaude\_49 Start: 27759, Stop: 27908, Start Num: 18

Candidate Starts for JeanClaude\_49:  
(1, 27489), (2, 27513), (3, 27534), (5, 27555), (Start: 18 @27759 has 8 MA's), (19, 27771),

Gene: Nyilah\_69 Start: 34800, Stop: 34949, Start Num: 18  
Candidate Starts for Nyilah\_69:  
(12, 34716), (14, 34722), (17, 34797), (Start: 18 @34800 has 8 MA's), (19, 34812),

Gene: Pigu\_51 Start: 28594, Stop: 28722, Start Num: 18  
Candidate Starts for Pigu\_51:  
(15, 28534), (Start: 18 @28594 has 8 MA's),

Gene: Raqqa\_62 Start: 33690, Stop: 33839, Start Num: 18  
Candidate Starts for Raqqa\_62:  
(8, 33567), (Start: 18 @33690 has 8 MA's), (21, 33786), (22, 33804),

Gene: Rooter\_53 Start: 29651, Stop: 29800, Start Num: 18  
Candidate Starts for Rooter\_53:  
(4, 29438), (6, 29489), (7, 29495), (10, 29540), (Start: 18 @29651 has 8 MA's), (19, 29663),

Gene: Sarge\_45 Start: 27408, Stop: 27557, Start Num: 18  
Candidate Starts for Sarge\_45:  
(Start: 18 @27408 has 8 MA's),

Gene: Shoya\_51 Start: 29581, Stop: 29730, Start Num: 18  
Candidate Starts for Shoya\_51:  
(9, 29470), (13, 29500), (16, 29557), (Start: 18 @29581 has 8 MA's), (19, 29593),