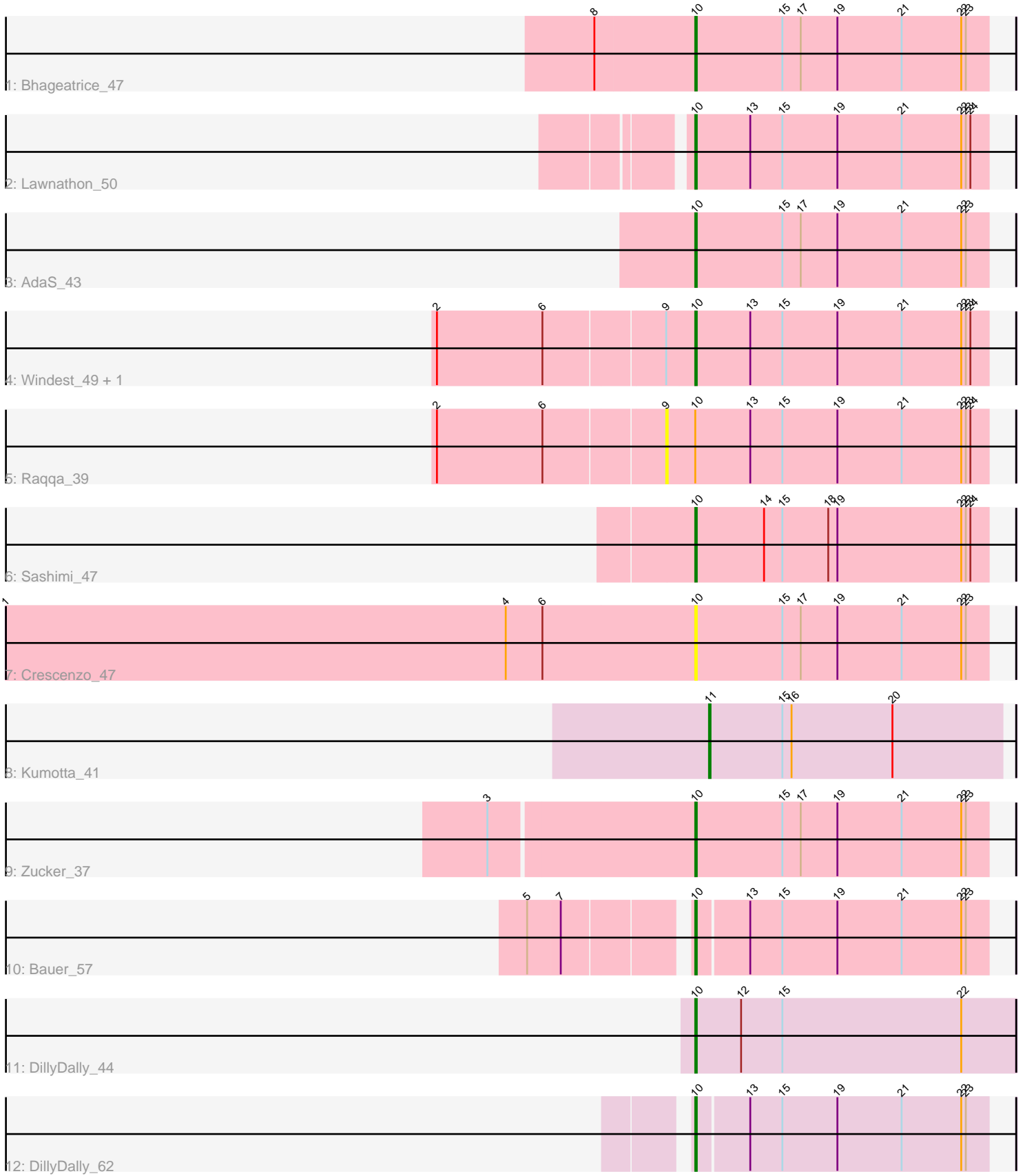


Pham 293270



Note: Tracks are now grouped by subcluster and scaled. Switching in subcluster is indicated by changes in track color. Track scale is now set by default to display the region 30 bp upstream of start 1 to 30 bp downstream of the last possible start. If this default region is judged to be packed too tightly with annotated starts, the track will be further scaled to only show that region of the ORF with annotated starts. This action will be indicated by adding "Zoomed" to the title. For starts, yellow indicates the location of called starts comprised solely of Glimmer/GeneMark auto-annotations, green indicates the location of called starts with at least 1 manual gene annotation.

Pham 293270 Report

This analysis was run 04/18/26 on database version 643.

Pham number 293270 has 13 members, 2 are drafts.

Phages represented in each track:

- Track 1 : Bhageatrice_47
- Track 2 : Lawnathon_50
- Track 3 : AdaS_43
- Track 4 : Windest_49, MUWow_47
- Track 5 : Raqqa_39
- Track 6 : Sashimi_47
- Track 7 : Crescenzo_47
- Track 8 : Kumotta_41
- Track 9 : Zucker_37
- Track 10 : Bauer_57
- Track 11 : DillyDally_44
- Track 12 : DillyDally_62

Summary of Final Annotations (See graph section above for start numbers):

The start number called the most often in the published annotations is 10, it was called in 10 of the 11 non-draft genes in the pham.

Genes that call this "Most Annotated" start:

- AdaS_43, Bauer_57, Bhageatrice_47, Crescenzo_47, DillyDally_44, DillyDally_62, Lawnathon_50, MUWow_47, Sashimi_47, Windest_49, Zucker_37,

Genes that have the "Most Annotated" start but do not call it:

- Raqqa_39,

Genes that do not have the "Most Annotated" start:

- Kumotta_41,

Summary by start number:

Start 9:

- Found in 3 of 13 (23.1%) of genes in pham
- No Manual Annotations of this start.
- Called 33.3% of time when present

- Phage (with cluster) where this start called: Raqqa_39 (AY),

Start 10:

- Found in 12 of 13 (92.3%) of genes in pham
- Manual Annotations of this start: 10 of 11
- Called 91.7% of time when present
- Phage (with cluster) where this start called: AdaS_43 (AY), Bauer_57 (FN), Bhageatrice_47 (AY), Crescenzo_47 (AY), DillyDally_44 (singleton), DillyDally_62 (singleton), Lawnathon_50 (AY), MUWow_47 (AY), Sashimi_47 (AY), Windest_49 (AY), Zucker_37 (FN),

Start 11:

- Found in 1 of 13 (7.7%) of genes in pham
- Manual Annotations of this start: 1 of 11
- Called 100.0% of time when present
- Phage (with cluster) where this start called: Kumotta_41 (FB),

Summary by clusters:

There are 4 clusters represented in this pham: AY, singleton, FB, FN,

Info for manual annotations of cluster AY:

- Start number 10 was manually annotated 6 times for cluster AY.

Info for manual annotations of cluster FB:

- Start number 11 was manually annotated 1 time for cluster FB.

Info for manual annotations of cluster FN:

- Start number 10 was manually annotated 2 times for cluster FN.

Gene Information:

Gene: AdaS_43 Start: 28316, Stop: 28507, Start Num: 10

Candidate Starts for AdaS_43:

(Start: 10 @28316 has 10 MA's), (15, 28373), (17, 28385), (19, 28409), (21, 28451), (22, 28490), (23, 28493),

Gene: Bauer_57 Start: 32770, Stop: 32958, Start Num: 10

Candidate Starts for Bauer_57:

(5, 32677), (7, 32698), (Start: 10 @32770 has 10 MA's), (13, 32803), (15, 32824), (19, 32860), (21, 32902), (22, 32941), (23, 32944),

Gene: Bhageatrice_47 Start: 31540, Stop: 31731, Start Num: 10

Candidate Starts for Bhageatrice_47:

(8, 31477), (Start: 10 @31540 has 10 MA's), (15, 31597), (17, 31609), (19, 31633), (21, 31675), (22, 31714), (23, 31717),

Gene: Crescenzo_47 Start: 30627, Stop: 30818, Start Num: 10

Candidate Starts for Crescenzo_47:

(1, 30177), (4, 30504), (6, 30528), (Start: 10 @30627 has 10 MA's), (15, 30684), (17, 30696), (19, 30720), (21, 30762), (22, 30801), (23, 30804),

Gene: DillyDally_44 Start: 29274, Stop: 29483, Start Num: 10
Candidate Starts for DillyDally_44:
(Start: 10 @29274 has 10 MA's), (12, 29304), (15, 29331), (22, 29448),

Gene: DillyDally_62 Start: 37933, Stop: 38121, Start Num: 10
Candidate Starts for DillyDally_62:
(Start: 10 @37933 has 10 MA's), (13, 37966), (15, 37987), (19, 38023), (21, 38065), (22, 38104), (23, 38107),

Gene: Kumotta_41 Start: 28129, Stop: 28320, Start Num: 11
Candidate Starts for Kumotta_41:
(Start: 11 @28129 has 1 MA's), (15, 28177), (16, 28183), (20, 28249),

Gene: Lawnathon_50 Start: 30589, Stop: 30780, Start Num: 10
Candidate Starts for Lawnathon_50:
(Start: 10 @30589 has 10 MA's), (13, 30625), (15, 30646), (19, 30682), (21, 30724), (22, 30763), (23, 30766), (24, 30769),

Gene: MUWow_47 Start: 30366, Stop: 30557, Start Num: 10
Candidate Starts for MUWow_47:
(2, 30204), (6, 30273), (9, 30348), (Start: 10 @30366 has 10 MA's), (13, 30402), (15, 30423), (19, 30459), (21, 30501), (22, 30540), (23, 30543), (24, 30546),

Gene: Raqqa_39 Start: 27212, Stop: 27421, Start Num: 9
Candidate Starts for Raqqa_39:
(2, 27068), (6, 27137), (9, 27212), (Start: 10 @27230 has 10 MA's), (13, 27266), (15, 27287), (19, 27323), (21, 27365), (22, 27404), (23, 27407), (24, 27410),

Gene: Sashimi_47 Start: 30948, Stop: 31139, Start Num: 10
Candidate Starts for Sashimi_47:
(Start: 10 @30948 has 10 MA's), (14, 30993), (15, 31005), (18, 31035), (19, 31041), (22, 31122), (23, 31125), (24, 31128),

Gene: Windest_49 Start: 29294, Stop: 29485, Start Num: 10
Candidate Starts for Windest_49:
(2, 29132), (6, 29201), (9, 29276), (Start: 10 @29294 has 10 MA's), (13, 29330), (15, 29351), (19, 29387), (21, 29429), (22, 29468), (23, 29471), (24, 29474),

Gene: Zucker_37 Start: 28169, Stop: 28360, Start Num: 10
Candidate Starts for Zucker_37:
(3, 28040), (Start: 10 @28169 has 10 MA's), (15, 28226), (17, 28238), (19, 28262), (21, 28304), (22, 28343), (23, 28346),