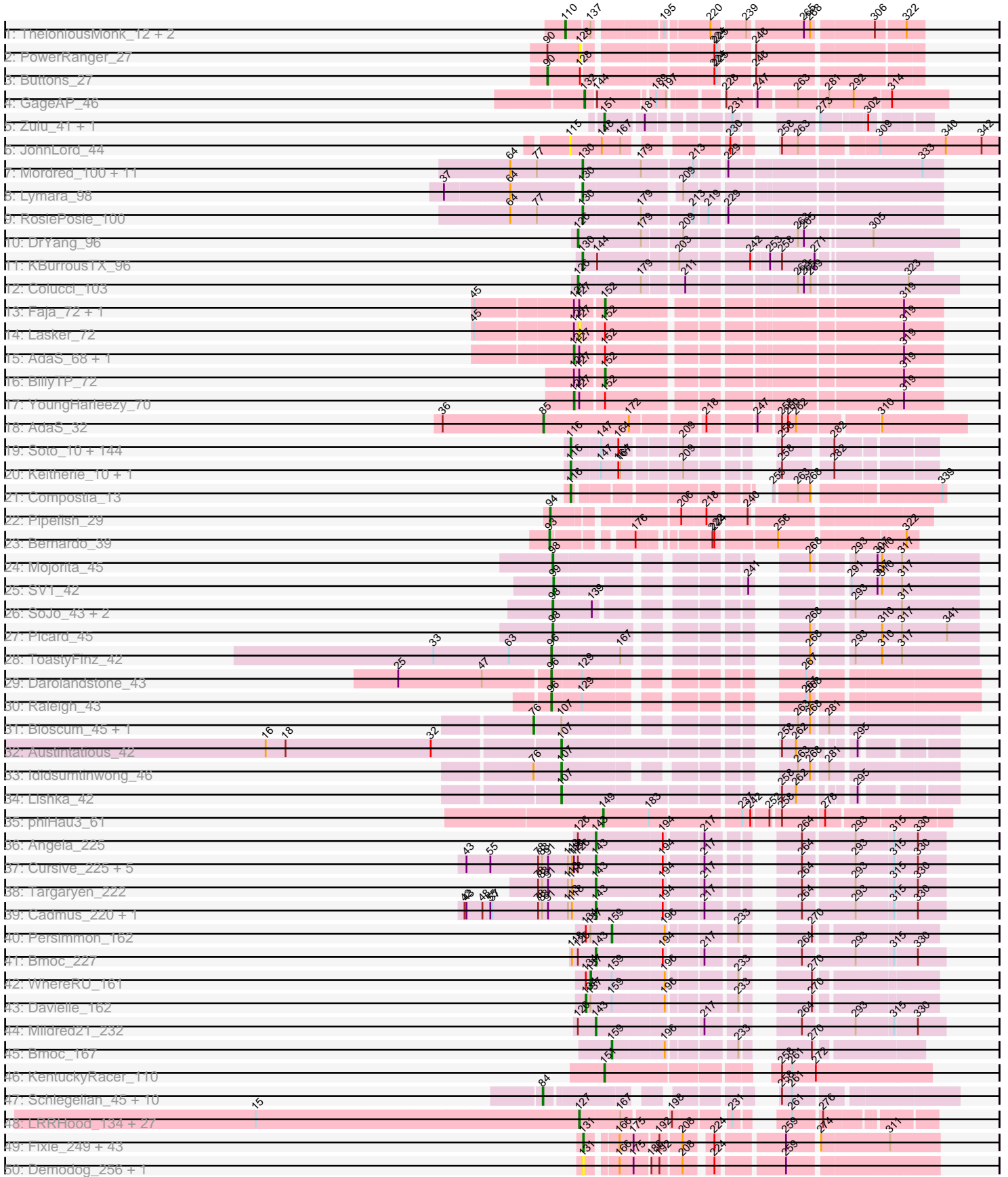
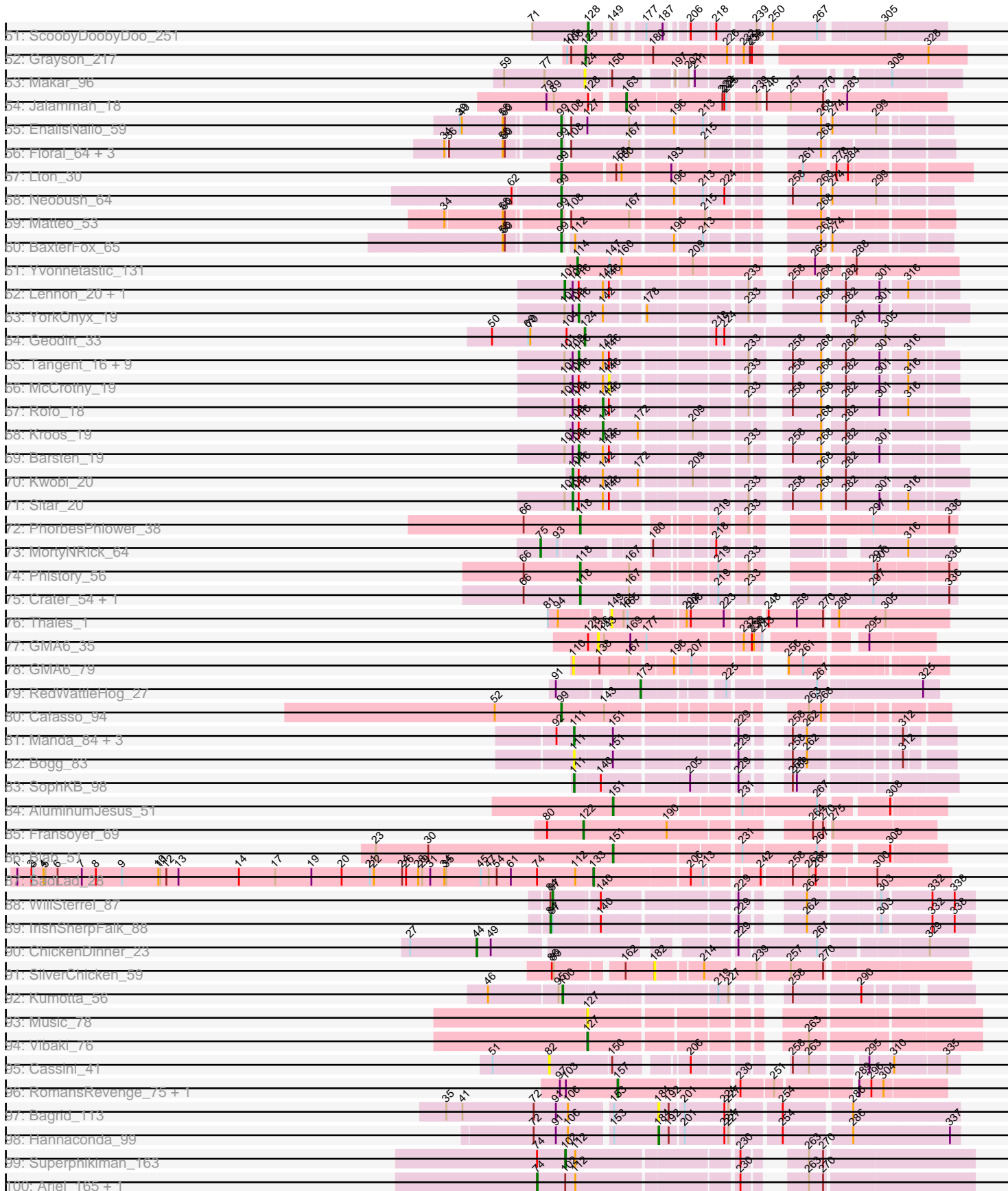


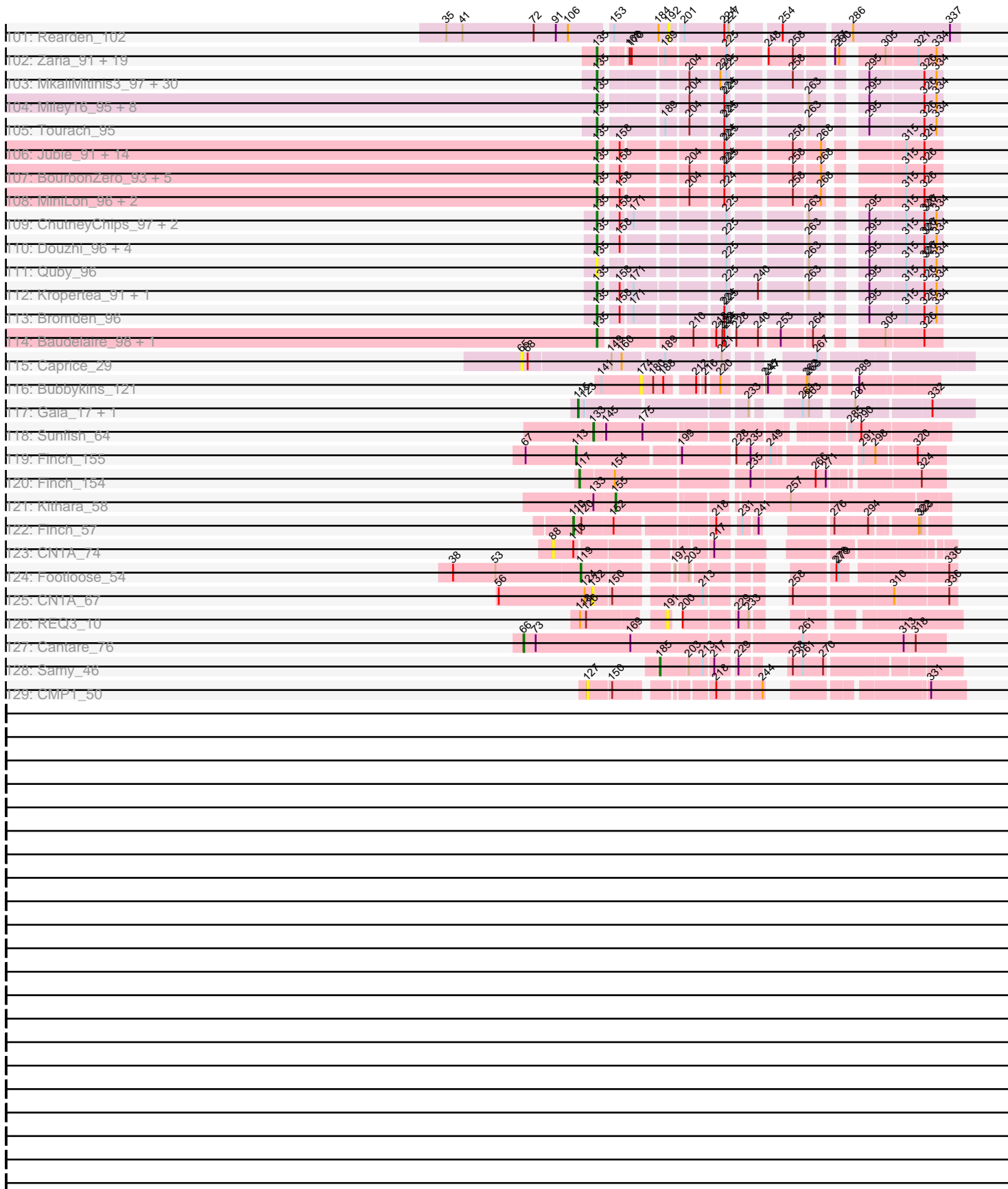
Pham 294322



Pham 294322



Pham 294322



Note: Tracks are now grouped by subcluster and scaled. Switching in subcluster is indicated by changes in track color. Track scale is now set by default to display the region 30 bp upstream of start 1 to 30 bp downstream of the last possible start. If this default region is judged to be packed too tightly with annotated starts, the track will be further scaled to only show that region of the ORF with annotated starts. This action will be indicated by adding "Zoomed" to the title. For starts, yellow indicates the location of called starts comprised solely of Glimmer/GeneMark auto-annotations, green indicates the location of called starts with at least 1 manual gene annotation.

Pham 294322 Report

This analysis was run 04/18/26 on database version 643.

WARNING: Pham size does not match number of genes in report. Either unphamerated genes have been added (by you) or starterator has removed genes due to invalid start codon.

Pham number 294322 has 486 members, 61 are drafts.

Phages represented in each track:

- Track 1 : TheloniousMonk_12, Target_12, Gwendoluna_12
- Track 2 : PowerRanger_27
- Track 3 : Buttons_27
- Track 4 : GageAP_46
- Track 5 : Zulu_41, Tucker_41
- Track 6 : JohnLord_44
- Track 7 : Mordred_100, Tophat_101, Chipper1996_1010, HumptyDumpty_100, Chubster_100, PrincessTrina_101, JaNo_99, Chocolat_100, Kabreeze_100, Scavito_101, Linus_100, EdgarPoe_100
- Track 8 : Lymara_98
- Track 9 : RosiePosie_100
- Track 10 : DrYang_96
- Track 11 : KBurrousTX_96
- Track 12 : Colucci_103
- Track 13 : Faja_72, Hestia_63
- Track 14 : Lasker_72
- Track 15 : AdaS_68, BenchScraper_71
- Track 16 : BillyTP_72
- Track 17 : YoungHarleezy_70
- Track 18 : AdaS_32
- Track 19 : Soto_10, HSavage_10, Puhltonio_10, Zaider_11, Gyarad_0010, Fringe_10, Numberten_10, JacAttac_10, Phamished_10, OliverWalter_10, Andre_10, OSmaximus_10, Gwilliam_10, Yoshand_10, Etaye_10, Vivaldi_10, Plmatters_10, Melc17_10, CheetO_10, Hartsy_10, Morty_10, Roscoe_11, Weher20_10, Serpentine_0010, ABU_10, KlimbOn_10, BlueHusk_10, Hamish_10, Suffolk_10, Mikota_10, Vista_10, ThreeOh3D2_10, PhatLouie_10, Serendipity_10, Inchworm_10, Olive_10, Swish_10, Gwennie1_10, Pherdinand_10, Surely_10, Nicole21_10, Hetaeria_10, Slatt_10, KLucky39_10, Kikipoo_10, Valjean_10, Virapocalypse_10, Pipsqueak_10, Murdoc_10, MiniBoss_10, Prickles_10, FluffyNinja_10, Gophee_10, Daka_10, AngelCake_10, Horchata_10, RedRaider89_11, Magic8_10, Zonia_10, Boehler_10, JangoPhett_10, DoesntMatter_10, BlackStallion_10, SDcharge11_10, Durga_10, Sigman_10, Riggan_10, UAch1_10, Mesh1_10, Fang_10, TomBombadil_10, Quisquilliae_10, Phipps_10, Craff_10, Waterdiva_10,

PhrodoBaggins_105, Podrick_10, Cannibal_10, FriarPreacher_10, Scoot17C_10, Lasso_10, Sheila_10, Samaymay_10, Tooj_10, ProfessorX_10, AltPhacts_10, Orion_10, Lulwa_10, Kailash_10, Newman_10, Emiris_10, Charles1_10, Spartan300_10, PG1_10, Megatron_10, Cobra_10, QueenBeane_10, Omniscient_10, LeeLot_10, IsaacEli_10, ElvisPhasley_10, Pops_10, Iridoclysis_10, Chunky_10, Nacho_0010, Lego3393_10, DirtJuice_10, CampRoach_10, Dingo_10, Oosterbaan_10, Anderson_10, Harvey_10, Roliet_10, Tomlarah_10, Matalotodo_10, GeneCoco_10, CamL_10, Chah_10, Inverness_10, Hertubise_10, Zelda_10, EmpTee_10, Badfish_10, Adriana_10, Thora_10, LasagnaCat_10, Frankicide_10, Eremos_10, Basato_11, Katniss_10, Buckeye_10, Colbert_10, Trypo_10, Haimas_10, Skippy_10, Usavi_10, Swiphy_10, Phunky_10, YouGoGlencoco_10, Eugenia_10, ShiVal_10, KingVeVeVe_10, Kloppinator_10, Nathan_10, PhatCats2014_10

- Track 20 : Keitherie_10, Coletti_10
- Track 21 : Compostia_13
- Track 22 : Pipefish_29
- Track 23 : Bernardo_39
- Track 24 : Mojorita_45
- Track 25 : SV1_42
- Track 26 : SoJo_43, DaRealMyers_43, Tubberson_43
- Track 27 : Picard_45
- Track 28 : ToastyFinz_42
- Track 29 : Darolandstone_43
- Track 30 : Raleigh_43
- Track 31 : Bioscum_45, PapayaSalad_44
- Track 32 : Austintatious_42
- Track 33 : Ididsumtinwong_46
- Track 34 : Lishka_42
- Track 35 : phiHau3_61
- Track 36 : Angela_225
- Track 37 : Cursive_225, Larnav_222, Lululemon_219, PacManQ_219, Shuckle_221, Sushi23_223
- Track 38 : Targaryen_222
- Track 39 : Cadmus_220, Daubenski_216
- Track 40 : Persimmon_162
- Track 41 : Bmoc_227
- Track 42 : WhereRU_161
- Track 43 : Davielle_162
- Track 44 : Mildred21_232
- Track 45 : Bmoc_167
- Track 46 : KentuckyRacer_110
- Track 47 : Schlegelian_45, AxeJC_43, Eklok_44, Ignacio_44, ArizonaGT_45, FrumpyGal_45, Cumberbatch_45, Eastland_44, Piccadilly_44, HFrancette_45, Vondra_43
- Track 48 : LRRHood_134, Jessibeth14_140, Burrough_141, Phox_138, MikeLiesIn_142, Teardrop_140, LolaVinca_141, HyRo_132, ChickenPhender_137, Pio_145, Moby_134, CharlieB_138, SVoro_139, Shaqnato_134, Cane17_133, Lukilu_131, Moiqah_133, Bezza_130, Fludd_142, Breeniome_140, Mangeria_141, Bxz1_138, Rabinovish_140, Shelob_143, DeejaClivia_128, Cali_136, Koguma_138, Shifa_130
- Track 49 : Fixie_249, Salacia_251, FoxtrotP1_248, Shrimp_252, Chargie21_247, Trinitium_246, Yucca_250, Specks_254, Janiyra_253, Bonray_252, FudgeTart_245, Asterius_250, SrishMeg2525_247, JPickles_247, Issimir_243, TinyTim_248,

Ablatia_249, Belieber_242, ZygoTaiga_246, Gizmo_255, McGee_251, Cleatunium_242, BananaFence_247, Morizzled23_247, Cactojaque_244, Teardrop_248, StubbySaigey_256, Blackbrain_248, PharkleMinkus_252, OrediggerDelux_245, Ading_252, ErnieJ_243, PurduePete_250, Primadonna_244, BobaPhatt_241, Darko_249, Maby2021_250, Erdmann_251, Basquiat_247, Bowman_247, Bread_246, Astraea_245, Lee7_249, EmToTheThree_250

- Track 50 : Demodog_256, Concombre_255
- Track 51 : ScoobyDoobyDoo_251
- Track 52 : Grayson_217
- Track 53 : Makar_96
- Track 54 : Jalammah_18
- Track 55 : EnalisNailo_59
- Track 56 : Floral_64, EMSquaredA_63, Pollux_66, Marteena_62
- Track 57 : Lton_30
- Track 58 : Neobush_64
- Track 59 : Matteo_53
- Track 60 : BaxterFox_65
- Track 61 : Yvonnestic_131
- Track 62 : Lennon_20, Vivi2_18
- Track 63 : YorkOnyx_19
- Track 64 : Geodirt_33
- Track 65 : Tangent_16, Love_20, Galadriel_20, Bibwit_19, Charming_16, Fosterous_16, Paries_19, BobBob_16, Keitabear_20, Nordenberg_13
- Track 66 : McCrothy_19
- Track 67 : Rofo_18
- Track 68 : Kroos_19
- Track 69 : Barsten_19
- Track 70 : Kwobi_20
- Track 71 : Sitar_20
- Track 72 : PhorbesPhlower_38
- Track 73 : MortyNRick_64
- Track 74 : Phistory_56
- Track 75 : Crater_54, Apricot_54
- Track 76 : Thales_1
- Track 77 : GMA6_35
- Track 78 : GMA6_79
- Track 79 : RedWattleHog_27
- Track 80 : Cafasso_94
- Track 81 : Manda_84, Goku_81, Eureka_81, BaboJay_80
- Track 82 : Bogg_83
- Track 83 : SophKB_98
- Track 84 : AluminumJesus_51
- Track 85 : Fransoyer_69
- Track 86 : Blab_51
- Track 87 : SadLad_28
- Track 88 : WillSterrel_87
- Track 89 : IrishSherpFalk_88
- Track 90 : ChickenDinner_23
- Track 91 : SilverChicken_59
- Track 92 : Kumotta_56
- Track 93 : Music_78
- Track 94 : Vibaki_76
- Track 95 : Cassini_41

- Track 96 : RomansRevenge_75, Boise_73
- Track 97 : Bagrid_113
- Track 98 : Hannaconda_99
- Track 99 : Superphikiman_163
- Track 100 : Ariel_165, Courthouse_162
- Track 101 : Rearden_102
- Track 102 : Zaria_91, Tyson_92, DirkDirk_88, Enceladus_88, Halena_88, MAckerman_89, JoeDirt_92, OhShagHennessy_87, Wamburggrxpress_90, LeBron_90, Rose5_92, Calm_92, Silverleaf_90, Appletree2_90, UPIE_90, AvadaKedavra_91, Wyatt2_92, Acquire49_91, CicholasNage_88, Poochiewood_89
- Track 103 : MkaliMitinis3_97, DHan_98, Underpass_87, GuuelaD_92, Hafay_96, Claus_94, Lynnae_96, BobsGarage_94, Rossetti_95, LilDestine_93, DanBing_94, Bazzle_92, Lewan_96, Wilder_96, Rumpelstiltskin_91, Finemlucis_96, SoJulia_97, Loadrie_94, BigCheese_95, Archie_92, Kahlid_94, Nicholasp3_95, Vatrix_93, Sarshaun_96, OverPar_97, Baoshan_95, Zakai_96, Crossroads_95, Soap141_95, ZhongYanYuan_92, Gardann_95
- Track 104 : Miley16_95, Netyap_94, Faith1_95, DrSeegs_94, Breezona_95, Winky_95, Wigglewiggle_95, Itos_95, Gabriela_95
- Track 105 : Tourach_95
- Track 106 : Jubie_91, Clautastrophe_90, Lumos_92, Whirlwind_93, Snenia_91, Finrny_92, Jobypre_92, Nicholas_90, MsGreen_92, TriFive_93, Bellis_92, Kingsolomon_90, Samty_91, Moostard_89, Red305_93
- Track 107 : BourbonZero_93, Ellson_91, LiyuLake_91, Krypton555_94, KirDoubleO7_90, DuncansLeg_92
- Track 108 : MiniLon_96, MiniMac_96, Lolly9_91
- Track 109 : ChutneyChips_97, Chaser_95, FarmResident_97
- Track 110 : Douzhi_96, PYPDinur_96, Sheng711_97, Douge_96, BrainDrainer_97
- Track 111 : Quby_96
- Track 112 : Kropertea_91, DyoEdafos_98
- Track 113 : Bromden_96
- Track 114 : Baudelaire_98, Aegeus_98
- Track 115 : Caprice_29
- Track 116 : Bubbykins_121
- Track 117 : Gaia_17, Nebkiss_18
- Track 118 : Sunfish_64
- Track 119 : Finch_155
- Track 120 : Finch_154
- Track 121 : Kithara_58
- Track 122 : Finch_57
- Track 123 : CN1A_74
- Track 124 : Footloose_54
- Track 125 : CN1A_67
- Track 126 : REQ3_10
- Track 127 : Cantare_76
- Track 128 : Samy_46
- Track 129 : CMP1_50

Summary of Final Annotations (See graph section above for start numbers):

The start number called the most often in the published annotations is 116, it was called in 160 of the 425 non-draft genes in the pham.

Genes that call this "Most Annotated" start:

- ABU_10, Adriana_10, AltPhacts_10, Anderson_10, Andre_10, AngelCake_10, Badfish_10, Barsten_19, Basato_11, Bibwit_19, BlackStallion_10, BlueHusk_10, BobBob_16, Boehler_10, Buckeye_10, CamL_10, CampRoach_10, Cannibal_10, Chah_10, Charles1_10, Charming_16, CheetO_10, Chunky_10, Cobra_10, Colbert_10, Coletti_10, Compostia_13, Craff_10, Daka_10, Dingo_10, DirtJuice_10, DoesntMatter_10, Durga_10, ElvisPhasley_10, Emiris_10, EmpTee_10, Eremos_10, Etaye_10, Eugenia_10, Fang_10, FluffyNinja_10, Fosterous_16, Frankicide_10, FriarPreacher_10, Fringe_10, Galadriel_20, GeneCoco_10, Gophee_10, Gwennie1_10, Gwilliam_10, Gyarad_0010, HSavage_10, Haimas_10, Hamish_10, Hartsy_10, Harvey_10, Hertubise_10, Hetaeria_10, Horchata_10, Inchworm_10, Inverness_10, Iridoclysis_10, IsaacEli_10, JacAttac_10, JangoPhett_10, KLucky39_10, Kailash_10, Katniss_10, Keitabear_20, Keitherie_10, Kikipoo_10, KingVeVeVe_10, KlimbOn_10, Kloppinator_10, LasagnaCat_10, Lasso_10, LeeLot_10, Lego3393_10, Love_20, Lulwa_10, Magic8_10, Matalotodo_10, Megatron_10, Melc17_10, Mesh1_10, Mikota_10, MiniBoss_10, Morty_10, Murdoc_10, Nacho_0010, Nathan_10, Newman_10, Nicole21_10, Nordenberg_13, Numberten_10, OSmaximus_10, Olive_10, OliverWalter_10, Omniscient_10, Oosterbaan_10, Orion_10, PG1_10, Paries_19, Phamished_10, PhatCats2014_10, PhatLouie_10, Pherdinand_10, Phipps_10, PhrodoBaggins_105, Phunky_10, Pipsqueak_10, Plmatters_10, Podrick_10, Pops_10, Prickles_10, ProfessorX_10, Puhltonio_10, QueenBeane_10, Quisquilliae_10, RedRaider89_11, Riggan_10, Roliet_10, Roscoe_11, SDcharge11_10, Samaymay_10, Scoot17C_10, Serendipity_10, Serpentine_0010, Sheila_10, ShiVal_10, Sigman_10, Skippy_10, Slatt_10, Soto_10, Spartan300_10, Suffolk_10, Surely_10, Swiphy_10, Swish_10, Tangent_16, Thora_10, ThreeOh3D2_10, TomBombadil_10, Tomlarah_10, Tooj_10, Trypo_10, UAch1_10, Usavi_10, Valjean_10, Virapocalypse_10, Vista_10, Vivaldi_10, Waterdiva_10, Weher20_10, YorkOnyx_19, Yoshand_10, YouGoGlencoco_10, Zaider_11, Zelda_10, Zonia_10,

Genes that have the "Most Annotated" start but do not call it:

- Kroos_19, Kwobi_20, Lennon_20, McCrothy_19, Rofo_18, Sitar_20, Vivi2_18,

Genes that do not have the "Most Annotated" start:

- Ablatia_249, Acquire49_91, AdaS_32, AdaS_68, Ading_252, Aegeus_98, AluminumJesus_51, Angela_225, Appletree2_90, Apricot_54, Archie_92, Ariel_165, ArizonaGT_45, Asterius_250, Astraea_245, Austintatious_42, AvadaKedavra_91, AxeJC_43, BaboJay_80, Bagrid_113, BananaFence_247, Baoshan_95, Basquiat_247, Baudelaire_98, BaxterFox_65, Bazzle_92, Belieber_242, Bellis_92, BenchScraper_71, Bernardo_39, Bezza_130, BigCheese_95, BillyTP_72, Bioscum_45, Blab_51, Blackbrain_248, Bmoc_167, Bmoc_227, BobaPhatt_241, BobsGarage_94, Bogg_83, Boise_73, Bonray_252, BourbonZero_93, Bowman_247, BrainDrainer_97, Bread_246, Breeniome_140, Breezona_95, Bromden_96, Bubbykins_121, Burrough_141, Buttons_27, Bxz1_138, CMP1_50, CN1A_67, CN1A_74, Cactojaque_244, Cadmus_220, Cafasso_94, Cali_136, Calm_92, Cane17_133, Cantare_76, Caprice_29, Cassini_41, Chargie21_247, CharlieB_138, Chaser_95, ChickenDinner_23, ChickenPhender_137, Chipper1996_1010, Chocolat_100, Chubster_100, ChutneyChips_97, CicholasNage_88, Claus_94, Clautastrophe_90, Cleatunium_242, Colucci_103, Concombre_255, Courthouse_162, Crater_54, Crossroads_95, Cumberbatch_45, Cursive_225, DHan_98,

DaRealMyers_43, DanBing_94, Darko_249, Darolandstone_43, Daubenski_216,
 Davielle_162, DeejaClivia_128, Demodog_256, DirkDirk_88, Douge_96, Douzhi_96,
 DrSeegs_94, DrYang_96, DuncansLeg_92, DyoEdafos_98, EMsquaredA_63,
 Eastland_44, EdgarPoe_100, Eklok_44, Ellson_91, EmToTheThree_250,
 EnalisNailo_59, Enceladus_88, Erdmann_251, ErnieJ_243, Eureka_81, Faith1_95,
 Faja_72, FarmResident_97, Finch_154, Finch_155, Finch_57, Finemlucis_96,
 Finnry_92, Fixie_249, Floral_64, Fludd_142, Footloose_54, FoxtrotP1_248,
 Fransoyer_69, FrumpyGal_45, FudgeTart_245, GMA6_35, GMA6_79, Gabriela_95,
 GageAP_46, Gaia_17, Gardann_95, Geodirt_33, Gizmo_255, Goku_81,
 Grayson_217, GuuelaD_92, Gwendoluna_12, HFrancette_45, Hafay_96, Halena_88,
 Hannaconda_99, Hestia_63, HumptyDumpty_100, HyRo_132, Ididsumtinwong_46,
 Ignacio_44, IrishSherpFalk_88, Issimir_243, Itos_95, JPickles_247, JaNo_99,
 Jalammah_18, Janiyra_253, Jessibeth14_140, Jobypre_92, JoeDirt_92,
 JohnLord_44, Jubie_91, KBurrousTX_96, Kabreeze_100, Kahlid_94,
 KentuckyRacer_110, Kingsolomon_90, KirDoubleO7_90, Kithara_58, Koguma_138,
 Kropertea_91, Krypton555_94, Kumotta_56, LRRHood_134, Larnav_222, Lasker_72,
 LeBron_90, Lee7_249, Lewan_96, LilDestine_93, Linus_100, Lishka_42,
 LiyuLake_91, Loadrie_94, LolaVinca_141, Lolly9_91, Lton_30, Lukilu_131,
 Lululemon_219, Lumos_92, Lymara_98, Lynnae_96, MAckerman_89,
 Maby2021_250, Makar_96, Manda_84, Mangeria_141, Marteena_62, Matteo_53,
 McGee_251, MikeLiesIn_142, Mildred21_232, Miley16_95, MiniLon_96, MiniMac_96,
 MkaliMinitis3_97, Moby_134, Moiqah_133, Mojorita_45, Moostard_89, Mordred_100,
 Morizzled23_247, MortyNRick_64, MsGreen_92, Music_78, Nebkiss_18,
 Neobush_64, Netyap_94, Nicholas_90, Nicholasp3_95, OhShagHennessy_87,
 OrediggerDelux_245, OverPar_97, PYPDinur_96, PacManQ_219, PapayaSalad_44,
 Persimmon_162, PharkleMinkus_252, Phistory_56, PhorbesPhlower_38, Phox_138,
 Picard_45, Piccadilly_44, Pio_145, Pipefish_29, Pollux_66, Poochiewood_89,
 PowerRanger_27, Primadonna_244, PrincessTrina_101, PurduePete_250, Quby_96,
 REQ3_10, Rabinovish_140, Raleigh_43, Rearden_102, Red305_93,
 RedWattleHog_27, RomansRevenge_75, Rose5_92, RosiePosie_100, Rossetti_95,
 Rumpelstiltskin_91, SV1_42, SVoro_139, SadLad_28, Salacia_251, Samty_91,
 Samy_46, Sarshaun_96, Scavito_101, Schlegelian_45, ScoobyDoobyDoo_251,
 Shaqato_134, Shelob_143, Sheng711_97, Shifa_130, Shrimp_252, Shuckle_221,
 SilverChicken_59, Silverleaf_90, Snenia_91, SoJo_43, SoJulia_97, Soap141_95,
 SophKB_98, Specks_254, SrishMeg2525_247, StubbySaigey_256, Sunfish_64,
 Superphikiman_163, Sushi23_223, Targaryen_222, Target_12, Teardrop_140,
 Teardrop_248, Thales_1, TheloniousMonk_12, TinyTim_248, ToastyFinz_42,
 Tophat_101, Tourach_95, TriFive_93, Trinitium_246, Tubberson_43, Tucker_41,
 Tyson_92, UPIE_90, Underpass_87, Vetrix_93, Vibaki_76, Vondra_43,
 Wamburgxpress_90, WhereRU_161, Whirlwind_93, Wigglewiggle_95, Wilder_96,
 WillSterrel_87, Winky_95, Wyatt2_92, YoungHarleezy_70, Yucca_250,
 Yvonetastic_131, Zakai_96, Zaria_91, ZhongYanYuan_92, Zulu_41,
 ZygoTaiga_246, phiHau3_61,

Summary by start number:

Start 44:

- Found in 1 of 486 (0.2%) of genes in pham
- Manual Annotations of this start: 1 of 425
- Called 100.0% of time when present
- Phage (with cluster) where this start called: ChickenDinner_23 (F1),

Start 65:

- Found in 1 of 486 (0.2%) of genes in pham
- No Manual Annotations of this start.
- Called 100.0% of time when present
- Phage (with cluster) where this start called: Caprice_29 (S),

Start 66:

- Found in 5 of 486 (1.0%) of genes in pham
- Manual Annotations of this start: 1 of 425
- Called 20.0% of time when present
- Phage (with cluster) where this start called: Cantare_76 (singleton),

Start 74:

- Found in 4 of 486 (0.8%) of genes in pham
- Manual Annotations of this start: 2 of 425
- Called 50.0% of time when present
- Phage (with cluster) where this start called: Ariel_165 (J), Courthouse_162 (J),

Start 75:

- Found in 1 of 486 (0.2%) of genes in pham
- Manual Annotations of this start: 1 of 425
- Called 100.0% of time when present
- Phage (with cluster) where this start called: MortyNRick_64 (DN),

Start 76:

- Found in 3 of 486 (0.6%) of genes in pham
- Manual Annotations of this start: 2 of 425
- Called 66.7% of time when present
- Phage (with cluster) where this start called: Bioscum_45 (BC3), PapayaSalad_44 (BC3),

Start 82:

- Found in 1 of 486 (0.2%) of genes in pham
- No Manual Annotations of this start.
- Called 100.0% of time when present
- Phage (with cluster) where this start called: Cassini_41 (FN),

Start 84:

- Found in 13 of 486 (2.7%) of genes in pham
- Manual Annotations of this start: 12 of 425
- Called 92.3% of time when present
- Phage (with cluster) where this start called: ArizonaGT_45 (BP), AxeJC_43 (BP), Cumberbatch_45 (BP), Eastland_44 (BP), Eklok_44 (BP), FrumpyGal_45 (BP), HFrancette_45 (BP), Ignacio_44 (BP), IrishSherpFalk_88 (F1), Piccadilly_44 (BP), Schlegelian_45 (BP), Vondra_43 (BP),

Start 85:

- Found in 1 of 486 (0.2%) of genes in pham
- Manual Annotations of this start: 1 of 425
- Called 100.0% of time when present
- Phage (with cluster) where this start called: AdaS_32 (AY),

Start 87:

- Found in 2 of 486 (0.4%) of genes in pham

- Manual Annotations of this start: 1 of 425
- Called 50.0% of time when present
- Phage (with cluster) where this start called: WillSterrel_87 (F1),

Start 88:

- Found in 1 of 486 (0.2%) of genes in pham
- No Manual Annotations of this start.
- Called 100.0% of time when present
- Phage (with cluster) where this start called: CN1A_74 (singleton),

Start 90:

- Found in 2 of 486 (0.4%) of genes in pham
- Manual Annotations of this start: 1 of 425
- Called 50.0% of time when present
- Phage (with cluster) where this start called: Buttons_27 (A1),

Start 93:

- Found in 2 of 486 (0.4%) of genes in pham
- Manual Annotations of this start: 1 of 425
- Called 50.0% of time when present
- Phage (with cluster) where this start called: Bernardo_39 (B3),

Start 94:

- Found in 2 of 486 (0.4%) of genes in pham
- Manual Annotations of this start: 1 of 425
- Called 50.0% of time when present
- Phage (with cluster) where this start called: Pipefish_29 (B3),

Start 96:

- Found in 3 of 486 (0.6%) of genes in pham
- Manual Annotations of this start: 3 of 425
- Called 100.0% of time when present
- Phage (with cluster) where this start called: Darolandstone_43 (BC2), Raleigh_43 (BC2), ToastyFinz_42 (BC1),

Start 98:

- Found in 5 of 486 (1.0%) of genes in pham
- Manual Annotations of this start: 4 of 425
- Called 100.0% of time when present
- Phage (with cluster) where this start called: DaRealMyers_43 (BC1), Mojarita_45 (BC1), Picard_45 (BC1), SoJo_43 (BC1), Tuberson_43 (BC1),

Start 99:

- Found in 11 of 486 (2.3%) of genes in pham
- Manual Annotations of this start: 11 of 425
- Called 100.0% of time when present
- Phage (with cluster) where this start called: BaxterFox_65 (CZ3), Cafasso_94 (DZ), EMSquaredA_63 (CY1), EnalisNailo_59 (CY1), Floral_64 (CY1), Lton_30 (CZ), Marteena_62 (CY1), Matteo_53 (CZ2), Neobush_64 (CZ1), Pollux_66 (CY1), SV1_42 (BC1),

Start 100:

- Found in 1 of 486 (0.2%) of genes in pham

- Manual Annotations of this start: 1 of 425
- Called 100.0% of time when present
- Phage (with cluster) where this start called: Kumotta_56 (FB),

Start 101:

- Found in 17 of 486 (3.5%) of genes in pham
- Manual Annotations of this start: 2 of 425
- Called 11.8% of time when present
- Phage (with cluster) where this start called: Lennon_20 (DE1), Vivi2_18 (DE1),

Start 102:

- Found in 3 of 486 (0.6%) of genes in pham
- Manual Annotations of this start: 1 of 425
- Called 33.3% of time when present
- Phage (with cluster) where this start called: Superphikiman_163 (J),

Start 107:

- Found in 5 of 486 (1.0%) of genes in pham
- Manual Annotations of this start: 3 of 425
- Called 60.0% of time when present
- Phage (with cluster) where this start called: Austintatious_42 (BC3), Ididsumtinwong_46 (BC3), Lishka_42 (BC3),

Start 109:

- Found in 19 of 486 (3.9%) of genes in pham
- Manual Annotations of this start: 2 of 425
- Called 10.5% of time when present
- Phage (with cluster) where this start called: Kwobi_20 (DE1), Sitar_20 (DE1),

Start 110:

- Found in 6 of 486 (1.2%) of genes in pham
- Manual Annotations of this start: 4 of 425
- Called 83.3% of time when present
- Phage (with cluster) where this start called: Finch_57 (singleton), GMA6_79 (DQ), Gwendoluna_12 (A1), Target_12 (A1), TheloniousMonk_12 (A1),

Start 111:

- Found in 6 of 486 (1.2%) of genes in pham
- Manual Annotations of this start: 5 of 425
- Called 100.0% of time when present
- Phage (with cluster) where this start called: BaboJay_80 (E), Bogg_83 (E), Eureka_81 (E), Goku_81 (E), Manda_84 (E), SophKB_98 (E),

Start 113:

- Found in 10 of 486 (2.1%) of genes in pham
- Manual Annotations of this start: 1 of 425
- Called 10.0% of time when present
- Phage (with cluster) where this start called: Finch_155 (singleton),

Start 114:

- Found in 1 of 486 (0.2%) of genes in pham
- Manual Annotations of this start: 1 of 425
- Called 100.0% of time when present

- Phage (with cluster) where this start called: Yvonnestic_131 (DD),

Start 115:

- Found in 3 of 486 (0.6%) of genes in pham
- Manual Annotations of this start: 2 of 425
- Called 100.0% of time when present
- Phage (with cluster) where this start called: Gaia_17 (X), JohnLord_44 (AD), Nebkiss_18 (X),

Start 116:

- Found in 167 of 486 (34.4%) of genes in pham
- Manual Annotations of this start: 160 of 425
- Called 95.8% of time when present
- Phage (with cluster) where this start called: ABU_10 (B1), Adriana_10 (B1), AltPhacts_10 (B1), Anderson_10 (B1), Andre_10 (B1), AngelCake_10 (B1), Badfish_10 (B1), Barsten_19 (DE1), Basato_11 (B1), Bibwit_19 (DE1), BlackStallion_10 (B1), BlueHusk_10 (B1), BobBob_16 (DE1), Boehler_10 (B1), Buckeye_10 (B1), CamL_10 (B1), CampRoach_10 (B1), Cannibal_10 (B1), Chah_10 (B1), Charles1_10 (B1), Charming_16 (DE1), CheetO_10 (B1), Chunky_10 (B1), Cobra_10 (B1), Colbert_10 (B1), Coletti_10 (B1), Compostia_13 (B3), Craff_10 (B1), Daka_10 (B1), Dingo_10 (B1), DirtJuice_10 (B1), DoesntMatter_10 (B1), Durga_10 (B1), ElvisPhasley_10 (B1), Emiris_10 (B1), EmpTee_10 (B1), Eremos_10 (B1), Etaye_10 (B1), Eugenia_10 (B1), Fang_10 (B1), FluffyNinja_10 (B1), Fosterous_16 (DE1), Frankicide_10 (B1), FriarPreacher_10 (B1), Fringe_10 (B1), Galadriel_20 (DE1), GeneCoco_10 (B1), Gophee_10 (B1), Gwennie1_10 (B1), Gwilliam_10 (B1), Gyarad_0010 (B1), HSavage_10 (B1), Haimas_10 (B1), Hamish_10 (B1), Hartsy_10 (B1), Harvey_10 (B1), Hertubise_10 (B1), Hetaeria_10 (B1), Horchata_10 (B1), Inchworm_10 (B1), Inverness_10 (B1), Iridoclysis_10 (B1), IsaacEli_10 (B1), JacAttac_10 (B1), JangoPhett_10 (B1), KLucky39_10 (B1), Kailash_10 (B1), Katniss_10 (B1), Keitabear_20 (DE1), Keitherie_10 (B1), Kikipoo_10 (B1), KingVeVeVe_10 (B1), KlimbOn_10 (B1), Kloppinator_10 (B1), LasagnaCat_10 (B1), Lasso_10 (B1), LeeLot_10 (B1), Lego3393_10 (B1), Love_20 (DE1), Lulwa_10 (B1), Magic8_10 (B1), Matalotodo_10 (B1), Megatron_10 (B1), Melc17_10 (B1), Mesh1_10 (B1), Mikota_10 (B1), MiniBoss_10 (B1), Morty_10 (B1), Murdoc_10 (B1), Nacho_0010 (B1), Nathan_10 (B1), Newman_10 (B1), Nicole21_10 (B1), Nordenberg_13 (DE1), Numberten_10 (B1), OSmaximus_10 (B1), Olive_10 (B1), OliverWalter_10 (B1), Omniscient_10 (B1), Oosterbaan_10 (B1), Orion_10 (B1), PG1_10 (B1), Paries_19 (DE1), Phamished_10 (B1), PhatCats2014_10 (B1), PhatLouie_10 (B1), Pherdinand_10 (B1), Phipps_10 (B1), PhrodoBaggins_105 (B1), Phunky_10 (B1), Pipsqueak_10 (B1), Pimatters_10 (B1), Podrick_10 (B1), Pops_10 (B1), Prickles_10 (B1), ProfessorX_10 (B1), Puhltonio_10 (B1), QueenBeane_10 (B1), Quisquilliae_10 (B1), RedRaider89_11 (B1), Riggan_10 (B1), Roliet_10 (B1), Roscoe_11 (B1), SDcharge11_10 (B1), Samaymay_10 (B1), Scoot17C_10 (B1), Serendipity_10 (B1), Serpentine_0010 (B1), Sheila_10 (B1), ShiVal_10 (B1), Sigman_10 (B1), Skippy_10 (B1), Slatt_10 (B1), Soto_10 (B1), Spartan300_10 (B1), Suffolk_10 (B1), Surely_10 (B1), Swiphy_10 (B1), Swish_10 (B1), Tangent_16 (DE1), Thora_10 (B1), ThreeOh3D2_10 (B1), TomBombadil_10 (B1), Tomlarah_10 (B1), Tooj_10 (B1), Trypo_10 (B1), UAch1_10 (B1), Usavi_10 (B1), Valjean_10 (B1), Virapocalypse_10 (B1), Vista_10 (B1), Vivaldi_10 (B1), Waterdiva_10 (B1), Weher20_10 (B1), YorkOnyx_19 (DE1), Yoshand_10 (B1), YouGoGlencoco_10 (B1), Zaider_11 (B1), Zelda_10 (B1), Zonia_10 (B1),

Start 117:

- Found in 1 of 486 (0.2%) of genes in pham
- Manual Annotations of this start: 1 of 425
- Called 100.0% of time when present
- Phage (with cluster) where this start called: Finch_154 (singleton),

Start 118:

- Found in 15 of 486 (3.1%) of genes in pham
- Manual Annotations of this start: 4 of 425
- Called 26.7% of time when present
- Phage (with cluster) where this start called: Apricot_54 (DN3), Crater_54 (DN3), Phistory_56 (DN1), PhorbesPhlower_38 (DH),

Start 119:

- Found in 1 of 486 (0.2%) of genes in pham
- Manual Annotations of this start: 1 of 425
- Called 100.0% of time when present
- Phage (with cluster) where this start called: Footloose_54 (singleton),

Start 121:

- Found in 13 of 486 (2.7%) of genes in pham
- Manual Annotations of this start: 3 of 425
- Called 23.1% of time when present
- Phage (with cluster) where this start called: AdaS_68 (AY), BenchScraper_71 (AY), YoungHarleezy_70 (AY),

Start 122:

- Found in 1 of 486 (0.2%) of genes in pham
- Manual Annotations of this start: 1 of 425
- Called 100.0% of time when present
- Phage (with cluster) where this start called: Fransoyer_69 (EG),

Start 124:

- Found in 3 of 486 (0.6%) of genes in pham
- Manual Annotations of this start: 1 of 425
- Called 66.7% of time when present
- Phage (with cluster) where this start called: Geodirt_33 (DE1), Makar_96 (CP),

Start 125:

- Found in 1 of 486 (0.2%) of genes in pham
- Manual Annotations of this start: 1 of 425
- Called 100.0% of time when present
- Phage (with cluster) where this start called: Grayson_217 (CB),

Start 126:

- Found in 12 of 486 (2.5%) of genes in pham
- Manual Annotations of this start: 2 of 425
- Called 16.7% of time when present
- Phage (with cluster) where this start called: Colucci_103 (AR), DrYang_96 (AR),

Start 127:

- Found in 39 of 486 (8.0%) of genes in pham
- Manual Annotations of this start: 25 of 425
- Called 82.1% of time when present

- Phage (with cluster) where this start called: Bezza_130 (C1), Breeniome_140 (C1), Burrough_141 (C1), Bxz1_138 (C1), CMP1_50 (singleton), Cali_136 (C1), Cane17_133 (C1), CharlieB_138 (C1), ChickenPhender_137 (C1), DeejaClivia_128 (C1), Fludd_142 (C1), HyRo_132 (C1), Jessibeth14_140 (C1), Koguma_138 (C1), LRRHood_134 (C1), Lasker_72 (AY), LolaVinca_141 (C1), Lukilu_131 (C1), Mangeria_141 (C1), MikeLiesIn_142 (C1), Moby_134 (C1), Moiqah_133 (C1), Music_78 (FL), Phox_138 (C1), Pio_145 (C1), Rabinovish_140 (C1), SVoro_139 (C1), Shaqnato_134 (C1), Shelob_143 (C1), Shifa_130 (C1), Teardrop_140 (C1), Vibaki_76 (FL),

Start 128:

- Found in 5 of 486 (1.0%) of genes in pham
- Manual Annotations of this start: 1 of 425
- Called 40.0% of time when present
- Phage (with cluster) where this start called: PowerRanger_27 (A1), ScoobyDoobyDoo_251 (C2),

Start 130:

- Found in 15 of 486 (3.1%) of genes in pham
- Manual Annotations of this start: 15 of 425
- Called 100.0% of time when present
- Phage (with cluster) where this start called: Chipper1996_1010 (AR), Chocolat_100 (AR), Chubster_100 (AR), EdgarPoe_100 (AR), HumptyDumpty_100 (AR), JaNo_99 (AR), KBurrousTX_96 (AR), Kabreeze_100 (AR), Linus_100 (AR), Lymara_98 (AR), Mordred_100 (AR), PrincessTrina_101 (AR), RosiePosie_100 (AR), Scavito_101 (AR), Tophat_101 (AR),

Start 131:

- Found in 46 of 486 (9.5%) of genes in pham
- Manual Annotations of this start: 35 of 425
- Called 100.0% of time when present
- Phage (with cluster) where this start called: Ablatia_249 (C1), Ading_252 (C1), Asterius_250 (C1), Astraea_245 (C1), BananaFence_247 (C1), Basquiat_247 (C1), Belieber_242 (C1), Blackbrain_248 (C1), BobaPhatt_241 (C1), Bonray_252 (C1), Bowman_247 (C1), Bread_246 (C1), Cactojaque_244 (C1), Chargie21_247 (C1), Cleatunium_242 (C1), Concombre_255 (C1), Darko_249 (C1), Demodog_256 (C1), EmToTheThree_250 (C1), Erdmann_251 (C1), ErnieJ_243 (C1), Fixie_249 (C1), FoxtrotP1_248 (C1), FudgeTart_245 (C1), Gizmo_255 (C1), Issimir_243 (C1), JPickles_247 (C1), Janiyra_253 (C1), Lee7_249 (C1), Maby2021_250 (C1), McGee_251 (C1), Morizzled23_247 (C1), OrediggerDelux_245 (C1), PharkleMinkus_252 (C1), Primadonna_244 (C1), PurduePete_250 (C1), Salacia_251 (C1), Shrimp_252 (C1), Specks_254 (C1), SrishMeg2525_247 (C1), StubbySaigey_256 (C1), Teardrop_248 (C1), TinyTim_248 (C1), Trinitium_246 (C1), Yucca_250 (C1), ZygoTaiga_246 (C1),

Start 132:

- Found in 2 of 486 (0.4%) of genes in pham
- Manual Annotations of this start: 1 of 425
- Called 100.0% of time when present
- Phage (with cluster) where this start called: CN1A_67 (singleton), GageAP_46 (A1),

Start 133:

- Found in 3 of 486 (0.6%) of genes in pham

- Manual Annotations of this start: 2 of 425
- Called 66.7% of time when present
- Phage (with cluster) where this start called: SadLad_28 (EG), Sunfish_64 (singleton),

Start 134:

- Found in 3 of 486 (0.6%) of genes in pham
- Manual Annotations of this start: 1 of 425
- Called 33.3% of time when present
- Phage (with cluster) where this start called: Davielle_162 (BE1),

Start 135:

- Found in 99 of 486 (20.4%) of genes in pham
- Manual Annotations of this start: 75 of 425
- Called 100.0% of time when present
- Phage (with cluster) where this start called: Acquire49_91 (L1), Aegeus_98 (L5), Appletree2_90 (L1), Archie_92 (L2), AvadaKedavra_91 (L1), Baoshan_95 (L2), Baudelaire_98 (L5), Bazzle_92 (L2), Bellis_92 (L3), BigCheese_95 (L2), BobsGarage_94 (L2), BourbonZero_93 (L3), BrainDrainer_97 (L4), Breezona_95 (L2), Bromden_96 (L4), Calm_92 (L1), Chaser_95 (L4), ChutneyChips_97 (L4), CicholasNage_88 (L1), Claus_94 (L2), Clautastrophe_90 (L3), Crossroads_95 (L2), DHan_98 (L2), DanBing_94 (L2), DirkDirk_88 (L1), Douge_96 (L4), Douzhi_96 (L4), DrSeegs_94 (L2), DuncansLeg_92 (L3), DyoEdafos_98 (L4), Ellson_91 (L3), Enceladus_88 (L1), Faith1_95 (L2), FarmResident_97 (L4), Finemlucis_96 (L2), Finnry_92 (L3), Gabriela_95 (L2), Gardann_95 (L2), GuuelaD_92 (L2), Hafay_96 (L2), Halena_88 (L1), Itos_95 (L2), Jobypre_92 (L3), JoeDirt_92 (L1), Jubie_91 (L3), Kahlid_94 (L2), Kingsolomon_90 (L3), KirDoubleO7_90 (L3), Kropertea_91 (L4), Krypton555_94 (L3), LeBron_90 (L1), Lewan_96 (L2), LilDestine_93 (L2), LiyuLake_91 (L3), Loadrie_94 (L2), Lolly9_91 (L3), Lumos_92 (L3), Lynnae_96 (L2), MAckerman_89 (L1), Miley16_95 (L2), MiniLon_96 (L3), MiniMac_96 (L3), MkaliMinitis3_97 (L2), Moostard_89 (L3), MsGreen_92 (L3), Netyap_94 (L2), Nicholas_90 (L3), Nicholasp3_95 (L2), OhShagHennessy_87 (L1), OverPar_97 (L2), PYPDinur_96 (L4), Poochiewood_89 (L1), Quby_96 (L4), Red305_93 (L3), Rose5_92 (L1), Rossetti_95 (L2), Rumpelstiltskin_91 (L2), Samty_91 (L3), Sarshaun_96 (L2), Sheng711_97 (L4), Silverleaf_90 (L1), Snenia_91 (L3), SoJulia_97 (L2), Soap141_95 (L2), Tourach_95 (L2), TriFive_93 (L3), Tyson_92 (L1), UPIE_90 (L1), Underpass_87 (L2), Vetrix_93 (L2), Wamburgxpress_90 (L1), Whirlwind_93 (L3), Wigglewiggle_95 (L2), Wilder_96 (L2), Winky_95 (L2), Wyatt2_92 (L1), Zakai_96 (L2), Zaria_91 (L1), ZhongYanYuan_92 (L2),

Start 136:

- Found in 1 of 486 (0.2%) of genes in pham
- No Manual Annotations of this start.
- Called 100.0% of time when present
- Phage (with cluster) where this start called: GMA6_35 (DQ),

Start 137:

- Found in 6 of 486 (1.2%) of genes in pham
- Manual Annotations of this start: 1 of 425
- Called 16.7% of time when present
- Phage (with cluster) where this start called: WhereRU_161 (BE1),

Start 142:

- Found in 19 of 486 (3.9%) of genes in pham
- Manual Annotations of this start: 2 of 425
- Called 10.5% of time when present
- Phage (with cluster) where this start called: Kroos_19 (DE1), Rofo_18 (DE1),

Start 143:

- Found in 14 of 486 (2.9%) of genes in pham
- Manual Annotations of this start: 12 of 425
- Called 85.7% of time when present
- Phage (with cluster) where this start called: Angela_225 (BE1), Bmoc_227 (BE1), Cadmus_220 (BE1), Cursive_225 (BE1), Daubenski_216 (BE1), Larnav_222 (BE1), Lululemon_219 (BE1), Mildred21_232 (BE1), PacManQ_219 (BE1), Shuckle_221 (BE1), Sushi23_223 (BE1), Targaryen_222 (BE1),

Start 146:

- Found in 16 of 486 (3.3%) of genes in pham
- No Manual Annotations of this start.
- Called 6.2% of time when present
- Phage (with cluster) where this start called: McCrothy_19 (DE1),

Start 149:

- Found in 4 of 486 (0.8%) of genes in pham
- Manual Annotations of this start: 1 of 425
- Called 50.0% of time when present
- Phage (with cluster) where this start called: Thales_1 (DQ), phiHau3_61 (BD4),

Start 151:

- Found in 10 of 486 (2.1%) of genes in pham
- Manual Annotations of this start: 5 of 425
- Called 50.0% of time when present
- Phage (with cluster) where this start called: AluminumJesus_51 (EG), Blab_51 (EG), KentuckyRacer_110 (BE2), Tucker_41 (A6), Zulu_41 (A6),

Start 152:

- Found in 8 of 486 (1.6%) of genes in pham
- Manual Annotations of this start: 3 of 425
- Called 37.5% of time when present
- Phage (with cluster) where this start called: BillyTP_72 (AY), Faja_72 (AY), Hestia_63 (AY),

Start 155:

- Found in 1 of 486 (0.2%) of genes in pham
- Manual Annotations of this start: 1 of 425
- Called 100.0% of time when present
- Phage (with cluster) where this start called: Kithara_58 (singleton),

Start 157:

- Found in 2 of 486 (0.4%) of genes in pham
- Manual Annotations of this start: 1 of 425
- Called 100.0% of time when present
- Phage (with cluster) where this start called: Boise_73 (FT), RomansRevenge_75 (FT),

Start 159:

- Found in 4 of 486 (0.8%) of genes in pham
- Manual Annotations of this start: 2 of 425
- Called 50.0% of time when present
- Phage (with cluster) where this start called: Bmoc_167 (BE1), Persimmon_162 (BE1),

Start 163:

- Found in 1 of 486 (0.2%) of genes in pham
- Manual Annotations of this start: 1 of 425
- Called 100.0% of time when present
- Phage (with cluster) where this start called: Jalammah_18 (CV),

Start 173:

- Found in 1 of 486 (0.2%) of genes in pham
- Manual Annotations of this start: 1 of 425
- Called 100.0% of time when present
- Phage (with cluster) where this start called: RedWattleHog_27 (DX),

Start 174:

- Found in 1 of 486 (0.2%) of genes in pham
- No Manual Annotations of this start.
- Called 100.0% of time when present
- Phage (with cluster) where this start called: Bubbykins_121 (UNK),

Start 182:

- Found in 1 of 486 (0.2%) of genes in pham
- No Manual Annotations of this start.
- Called 100.0% of time when present
- Phage (with cluster) where this start called: SilverChicken_59 (F2),

Start 184:

- Found in 3 of 486 (0.6%) of genes in pham
- Manual Annotations of this start: 1 of 425
- Called 66.7% of time when present
- Phage (with cluster) where this start called: Bagrid_113 (J), Hannaconda_99 (J),

Start 185:

- Found in 1 of 486 (0.2%) of genes in pham
- Manual Annotations of this start: 1 of 425
- Called 100.0% of time when present
- Phage (with cluster) where this start called: Samy_46 (singleton),

Start 191:

- Found in 1 of 486 (0.2%) of genes in pham
- No Manual Annotations of this start.
- Called 100.0% of time when present
- Phage (with cluster) where this start called: REQ3_10 (singleton),

Start 192:

- Found in 49 of 486 (10.1%) of genes in pham
- No Manual Annotations of this start.
- Called 2.0% of time when present

- Phage (with cluster) where this start called: Rearden_102 (J),

Summary by clusters:

There are 51 clusters represented in this pham: DN, singleton, FT, DH, CZ2, CZ3, DD, CZ1, FB, BP, DX, FL, FN, DQ, CP, A1, BD4, DN1, DN3, A6, C2, C1, CY1, E, AD, CB, EG, J, CZ, L4, L5, L2, L3, L1, AY, X, UNK, CV, F1, F2, DE1, S, AR, B1, B3, BE2, DZ, BE1, BC1, BC2, BC3,

Info for manual annotations of cluster A1:

- Start number 90 was manually annotated 1 time for cluster A1.
- Start number 110 was manually annotated 3 times for cluster A1.
- Start number 132 was manually annotated 1 time for cluster A1.

Info for manual annotations of cluster A6:

- Start number 151 was manually annotated 2 times for cluster A6.

Info for manual annotations of cluster AR:

- Start number 126 was manually annotated 2 times for cluster AR.
- Start number 130 was manually annotated 15 times for cluster AR.

Info for manual annotations of cluster AY:

- Start number 85 was manually annotated 1 time for cluster AY.
- Start number 121 was manually annotated 3 times for cluster AY.
- Start number 152 was manually annotated 3 times for cluster AY.

Info for manual annotations of cluster B1:

- Start number 116 was manually annotated 147 times for cluster B1.

Info for manual annotations of cluster B3:

- Start number 93 was manually annotated 1 time for cluster B3.
- Start number 94 was manually annotated 1 time for cluster B3.
- Start number 116 was manually annotated 1 time for cluster B3.

Info for manual annotations of cluster BC1:

- Start number 96 was manually annotated 1 time for cluster BC1.
- Start number 98 was manually annotated 4 times for cluster BC1.
- Start number 99 was manually annotated 1 time for cluster BC1.

Info for manual annotations of cluster BC2:

- Start number 96 was manually annotated 2 times for cluster BC2.

Info for manual annotations of cluster BC3:

- Start number 76 was manually annotated 2 times for cluster BC3.
- Start number 107 was manually annotated 3 times for cluster BC3.

Info for manual annotations of cluster BD4:

- Start number 149 was manually annotated 1 time for cluster BD4.

Info for manual annotations of cluster BE1:

- Start number 134 was manually annotated 1 time for cluster BE1.
- Start number 137 was manually annotated 1 time for cluster BE1.

- Start number 143 was manually annotated 12 times for cluster BE1.
- Start number 159 was manually annotated 2 times for cluster BE1.

Info for manual annotations of cluster BE2:

- Start number 151 was manually annotated 1 time for cluster BE2.

Info for manual annotations of cluster BP:

- Start number 84 was manually annotated 11 times for cluster BP.

Info for manual annotations of cluster C1:

- Start number 127 was manually annotated 24 times for cluster C1.
- Start number 131 was manually annotated 35 times for cluster C1.

Info for manual annotations of cluster C2:

- Start number 128 was manually annotated 1 time for cluster C2.

Info for manual annotations of cluster CB:

- Start number 125 was manually annotated 1 time for cluster CB.

Info for manual annotations of cluster CV:

- Start number 163 was manually annotated 1 time for cluster CV.

Info for manual annotations of cluster CY1:

- Start number 99 was manually annotated 5 times for cluster CY1.

Info for manual annotations of cluster CZ:

- Start number 99 was manually annotated 1 time for cluster CZ.

Info for manual annotations of cluster CZ1:

- Start number 99 was manually annotated 1 time for cluster CZ1.

Info for manual annotations of cluster CZ2:

- Start number 99 was manually annotated 1 time for cluster CZ2.

Info for manual annotations of cluster CZ3:

- Start number 99 was manually annotated 1 time for cluster CZ3.

Info for manual annotations of cluster DD:

- Start number 114 was manually annotated 1 time for cluster DD.

Info for manual annotations of cluster DE1:

- Start number 101 was manually annotated 2 times for cluster DE1.
- Start number 109 was manually annotated 2 times for cluster DE1.
- Start number 116 was manually annotated 12 times for cluster DE1.
- Start number 124 was manually annotated 1 time for cluster DE1.
- Start number 142 was manually annotated 2 times for cluster DE1.

Info for manual annotations of cluster DH:

- Start number 118 was manually annotated 1 time for cluster DH.

Info for manual annotations of cluster DN:

- Start number 75 was manually annotated 1 time for cluster DN.

Info for manual annotations of cluster DN1:

- Start number 118 was manually annotated 1 time for cluster DN1.

Info for manual annotations of cluster DN3:

- Start number 118 was manually annotated 2 times for cluster DN3.

Info for manual annotations of cluster DX:

- Start number 173 was manually annotated 1 time for cluster DX.

Info for manual annotations of cluster DZ:

- Start number 99 was manually annotated 1 time for cluster DZ.

Info for manual annotations of cluster E:

- Start number 111 was manually annotated 5 times for cluster E.

Info for manual annotations of cluster EG:

- Start number 122 was manually annotated 1 time for cluster EG.
- Start number 133 was manually annotated 1 time for cluster EG.
- Start number 151 was manually annotated 2 times for cluster EG.

Info for manual annotations of cluster F1:

- Start number 44 was manually annotated 1 time for cluster F1.
- Start number 84 was manually annotated 1 time for cluster F1.
- Start number 87 was manually annotated 1 time for cluster F1.

Info for manual annotations of cluster FB:

- Start number 100 was manually annotated 1 time for cluster FB.

Info for manual annotations of cluster FL:

- Start number 127 was manually annotated 1 time for cluster FL.

Info for manual annotations of cluster FT:

- Start number 157 was manually annotated 1 time for cluster FT.

Info for manual annotations of cluster J:

- Start number 74 was manually annotated 2 times for cluster J.
- Start number 102 was manually annotated 1 time for cluster J.
- Start number 184 was manually annotated 1 time for cluster J.

Info for manual annotations of cluster L1:

- Start number 135 was manually annotated 19 times for cluster L1.

Info for manual annotations of cluster L2:

- Start number 135 was manually annotated 31 times for cluster L2.

Info for manual annotations of cluster L3:

- Start number 135 was manually annotated 19 times for cluster L3.

Info for manual annotations of cluster L4:

- Start number 135 was manually annotated 4 times for cluster L4.

Info for manual annotations of cluster L5:

- Start number 135 was manually annotated 2 times for cluster L5.

Info for manual annotations of cluster X:

- Start number 115 was manually annotated 2 times for cluster X.

Gene Information:

Gene: ABU_10 Start: 8941, Stop: 9375, Start Num: 116

Candidate Starts for ABU_10:

(Start: 116 @8941 has 160 MA's), (147, 8980), (164, 9004), (209, 9085), (258, 9175), (282, 9238),

Gene: Ablatia_249 Start: 141923, Stop: 142372, Start Num: 131

Candidate Starts for Ablatia_249:

(Start: 131 @141923 has 35 MA's), (166, 141962), (175, 141980), (192, 142013), (208, 142040), (224, 142073), (259, 142160), (274, 142202), (311, 142301),

Gene: Acquire49_91 Start: 57365, Stop: 57775, Start Num: 135

Candidate Starts for Acquire49_91:

(Start: 135 @57365 has 75 MA's), (168, 57395), (170, 57398), (189, 57443), (225, 57521), (248, 57563), (258, 57599), (277, 57641), (280, 57647), (305, 57695), (321, 57740), (334, 57767),

Gene: AdaS_68 Start: 35660, Stop: 36148, Start Num: 121

Candidate Starts for AdaS_68:

(Start: 121 @35660 has 3 MA's), (Start: 127 @35666 has 25 MA's), (Start: 152 @35696 has 3 MA's), (319, 36092),

Gene: AdaS_32 Start: 23341, Stop: 23913, Start Num: 85

Candidate Starts for AdaS_32:

(36, 23191), (Start: 85 @23341 has 1 MA's), (172, 23467), (218, 23563), (247, 23626), (258, 23656), (260, 23665), (262, 23677), (310, 23788),

Gene: Ading_252 Start: 144356, Stop: 144805, Start Num: 131

Candidate Starts for Ading_252:

(Start: 131 @144356 has 35 MA's), (166, 144395), (175, 144413), (192, 144446), (208, 144473), (224, 144506), (259, 144593), (274, 144635), (311, 144734),

Gene: Adriana_10 Start: 8943, Stop: 9377, Start Num: 116

Candidate Starts for Adriana_10:

(Start: 116 @8943 has 160 MA's), (147, 8982), (164, 9006), (209, 9087), (258, 9177), (282, 9240),

Gene: Aegeus_98 Start: 59877, Stop: 60281, Start Num: 135

Candidate Starts for Aegeus_98:

(Start: 135 @59877 has 75 MA's), (210, 59988), (218, 60015), (222, 60024), (224, 60027), (225, 60030), (228, 60036), (240, 60066), (253, 60090), (264, 60132), (305, 60201), (326, 60255),

Gene: AltPhacts_10 Start: 8944, Stop: 9378, Start Num: 116

Candidate Starts for AltPhacts_10:

(Start: 116 @8944 has 160 MA's), (147, 8983), (164, 9007), (209, 9088), (258, 9178), (282, 9241),

Gene: AluminumJesus_51 Start: 40979, Stop: 40554, Start Num: 151

Candidate Starts for AluminumJesus_51:

(Start: 151 @40979 has 5 MA's), (231, 40811), (267, 40709), (308, 40625),

Gene: Anderson_10 Start: 8943, Stop: 9377, Start Num: 116

Candidate Starts for Anderson_10:

(Start: 116 @8943 has 160 MA's), (147, 8982), (164, 9006), (209, 9087), (258, 9177), (282, 9240),

Gene: Andre_10 Start: 8944, Stop: 9378, Start Num: 116

Candidate Starts for Andre_10:

(Start: 116 @8944 has 160 MA's), (147, 8983), (164, 9007), (209, 9088), (258, 9178), (282, 9241),

Gene: AngelCake_10 Start: 8940, Stop: 9374, Start Num: 116

Candidate Starts for AngelCake_10:

(Start: 116 @8940 has 160 MA's), (147, 8979), (164, 9003), (209, 9084), (258, 9174), (282, 9237),

Gene: Angela_225 Start: 112366, Stop: 112806, Start Num: 143

Candidate Starts for Angela_225:

(Start: 126 @112339 has 2 MA's), (Start: 143 @112366 has 12 MA's), (194, 112462), (217, 112513), (264, 112606), (293, 112678), (315, 112732), (330, 112765),

Gene: Appletree2_90 Start: 57125, Stop: 57535, Start Num: 135

Candidate Starts for Appletree2_90:

(Start: 135 @57125 has 75 MA's), (168, 57155), (170, 57158), (189, 57203), (225, 57281), (248, 57323), (258, 57359), (277, 57401), (280, 57407), (305, 57455), (321, 57500), (334, 57527),

Gene: Apricot_54 Start: 35119, Stop: 35568, Start Num: 118

Candidate Starts for Apricot_54:

(Start: 66 @35038 has 1 MA's), (Start: 118 @35119 has 4 MA's), (167, 35191), (219, 35287), (233, 35323), (297, 35452), (336, 35557),

Gene: Archie_92 Start: 59049, Stop: 59462, Start Num: 135

Candidate Starts for Archie_92:

(Start: 135 @59049 has 75 MA's), (204, 59160), (220, 59199), (225, 59208), (258, 59286), (295, 59358), (326, 59436), (334, 59454),

Gene: Ariel_165 Start: 84168, Stop: 84737, Start Num: 74

Candidate Starts for Ariel_165:

(Start: 74 @84168 has 2 MA's), (Start: 102 @84210 has 1 MA's), (112, 84225), (230, 84447), (263, 84504), (270, 84525),

Gene: ArizonaGT_45 Start: 30201, Stop: 30692, Start Num: 84

Candidate Starts for ArizonaGT_45:

(Start: 84 @30201 has 12 MA's), (258, 30453), (261, 30468),

Gene: Asterius_250 Start: 142368, Stop: 142817, Start Num: 131

Candidate Starts for Asterius_250:

(Start: 131 @142368 has 35 MA's), (166, 142407), (175, 142425), (192, 142458), (208, 142485), (224, 142518), (259, 142605), (274, 142647), (311, 142746),

Gene: *Astraea_245* Start: 141563, Stop: 142012, Start Num: 131
Candidate Starts for *Astraea_245*:
(Start: 131 @141563 has 35 MA's), (166, 141602), (175, 141620), (192, 141653), (208, 141680), (224, 141713), (259, 141800), (274, 141842), (311, 141941),

Gene: *Austintatious_42* Start: 27716, Stop: 28177, Start Num: 107
Candidate Starts for *Austintatious_42*:
(16, 27290), (18, 27320), (32, 27539), (Start: 107 @27716 has 3 MA's), (258, 27980), (262, 28001), (295, 28064),

Gene: *AvadaKedavra_91* Start: 57477, Stop: 57887, Start Num: 135
Candidate Starts for *AvadaKedavra_91*:
(Start: 135 @57477 has 75 MA's), (168, 57507), (170, 57510), (189, 57555), (225, 57633), (248, 57675), (258, 57711), (277, 57753), (280, 57759), (305, 57807), (321, 57852), (334, 57879),

Gene: *AxeJC_43* Start: 29903, Stop: 30394, Start Num: 84
Candidate Starts for *AxeJC_43*:
(Start: 84 @29903 has 12 MA's), (258, 30155), (261, 30170),

Gene: *BaboJay_80* Start: 51126, Stop: 51572, Start Num: 111
Candidate Starts for *BaboJay_80*:
(92, 51102), (Start: 111 @51126 has 5 MA's), (Start: 151 @51180 has 5 MA's), (229, 51339), (258, 51378), (262, 51399), (312, 51510),

Gene: *Badfish_10* Start: 8943, Stop: 9377, Start Num: 116
Candidate Starts for *Badfish_10*:
(Start: 116 @8943 has 160 MA's), (147, 8982), (164, 9006), (209, 9087), (258, 9177), (282, 9240),

Gene: *Bagrid_113* Start: 63671, Stop: 64075, Start Num: 184
Candidate Starts for *Bagrid_113*:
(35, 63371), (41, 63395), (72, 63500), (91, 63533), (106, 63551), (153, 63608), (Start: 184 @63671 has 1 MA's), (192, 63686), (201, 63704), (224, 63761), (227, 63767), (254, 63827), (286, 63920),

Gene: *BananaFence_247* Start: 142192, Stop: 142641, Start Num: 131
Candidate Starts for *BananaFence_247*:
(Start: 131 @142192 has 35 MA's), (166, 142231), (175, 142249), (192, 142282), (208, 142309), (224, 142342), (259, 142429), (274, 142471), (311, 142570),

Gene: *Baoshan_95* Start: 59704, Stop: 60117, Start Num: 135
Candidate Starts for *Baoshan_95*:
(Start: 135 @59704 has 75 MA's), (204, 59815), (220, 59854), (225, 59863), (258, 59941), (295, 60013), (326, 60091), (334, 60109),

Gene: *Barsten_19* Start: 14612, Stop: 15058, Start Num: 116
Candidate Starts for *Barsten_19*:
(Start: 101 @14591 has 2 MA's), (Start: 109 @14603 has 2 MA's), (Start: 116 @14612 has 160 MA's), (Start: 142 @14642 has 2 MA's), (146, 14651), (233, 14822), (258, 14855), (268, 14897), (282, 14918), (301, 14963),

Gene: *Basato_11* Start: 9177, Stop: 9611, Start Num: 116
Candidate Starts for *Basato_11*:
(Start: 116 @9177 has 160 MA's), (147, 9216), (164, 9240), (209, 9321), (258, 9411), (282, 9474),

Gene: Basquiat_247 Start: 140478, Stop: 140927, Start Num: 131

Candidate Starts for Basquiat_247:

(Start: 131 @140478 has 35 MA's), (166, 140517), (175, 140535), (192, 140568), (208, 140595), (224, 140628), (259, 140715), (274, 140757), (311, 140856),

Gene: Baudelaire_98 Start: 59877, Stop: 60281, Start Num: 135

Candidate Starts for Baudelaire_98:

(Start: 135 @59877 has 75 MA's), (210, 59988), (218, 60015), (222, 60024), (224, 60027), (225, 60030), (228, 60036), (240, 60066), (253, 60090), (264, 60132), (305, 60201), (326, 60255),

Gene: BaxterFox_65 Start: 44276, Stop: 44731, Start Num: 99

Candidate Starts for BaxterFox_65:

(58, 44204), (60, 44207), (Start: 99 @44276 has 11 MA's), (112, 44288), (196, 44417), (213, 44453), (268, 44570), (274, 44579),

Gene: Bazzle_92 Start: 59605, Stop: 60018, Start Num: 135

Candidate Starts for Bazzle_92:

(Start: 135 @59605 has 75 MA's), (204, 59716), (220, 59755), (225, 59764), (258, 59842), (295, 59914), (326, 59992), (334, 60010),

Gene: Belieber_242 Start: 140605, Stop: 141054, Start Num: 131

Candidate Starts for Belieber_242:

(Start: 131 @140605 has 35 MA's), (166, 140644), (175, 140662), (192, 140695), (208, 140722), (224, 140755), (259, 140842), (274, 140884), (311, 140983),

Gene: Bellis_92 Start: 59240, Stop: 59647, Start Num: 135

Candidate Starts for Bellis_92:

(Start: 135 @59240 has 75 MA's), (158, 59261), (224, 59390), (225, 59393), (258, 59471), (268, 59507), (315, 59594), (326, 59621),

Gene: BenchScraper_71 Start: 37047, Stop: 37535, Start Num: 121

Candidate Starts for BenchScraper_71:

(Start: 121 @37047 has 3 MA's), (Start: 127 @37053 has 25 MA's), (Start: 152 @37083 has 3 MA's), (319, 37479),

Gene: Bernardo_39 Start: 36994, Stop: 37440, Start Num: 93

Candidate Starts for Bernardo_39:

(Start: 93 @36994 has 1 MA's), (176, 37090), (222, 37174), (224, 37177), (256, 37255), (322, 37423),

Gene: Bezza_130 Start: 82627, Stop: 83043, Start Num: 127

Candidate Starts for Bezza_130:

(15, 82150), (Start: 127 @82627 has 25 MA's), (167, 82684), (198, 82747), (231, 82816), (261, 82861), (276, 82900),

Gene: Bibwit_19 Start: 14856, Stop: 15302, Start Num: 116

Candidate Starts for Bibwit_19:

(Start: 101 @14835 has 2 MA's), (Start: 109 @14847 has 2 MA's), (Start: 116 @14856 has 160 MA's), (Start: 142 @14886 has 2 MA's), (146, 14895), (233, 15066), (258, 15099), (268, 15141), (282, 15162), (301, 15207), (316, 15243),

Gene: BigCheese_95 Start: 59815, Stop: 60228, Start Num: 135

Candidate Starts for BigCheese_95:

(Start: 135 @59815 has 75 MA's), (204, 59926), (220, 59965), (225, 59974), (258, 60052), (295, 60124), (326, 60202), (334, 60220),

Gene: BillyTP_72 Start: 38938, Stop: 39390, Start Num: 152

Candidate Starts for BillyTP_72:

(Start: 121 @38902 has 3 MA's), (Start: 127 @38908 has 25 MA's), (Start: 152 @38938 has 3 MA's), (319, 39334),

Gene: Bioscum_45 Start: 29978, Stop: 30484, Start Num: 76

Candidate Starts for Bioscum_45:

(Start: 76 @29978 has 2 MA's), (Start: 107 @30014 has 3 MA's), (263, 30272), (268, 30290), (281, 30311),

Gene: Blab_51 Start: 40826, Stop: 40401, Start Num: 151

Candidate Starts for Blab_51:

(23, 41177), (30, 41099), (Start: 151 @40826 has 5 MA's), (231, 40658), (267, 40556), (308, 40472),

Gene: BlackStallion_10 Start: 8941, Stop: 9375, Start Num: 116

Candidate Starts for BlackStallion_10:

(Start: 116 @8941 has 160 MA's), (147, 8980), (164, 9004), (209, 9085), (258, 9175), (282, 9238),

Gene: Blackbrain_248 Start: 142255, Stop: 142704, Start Num: 131

Candidate Starts for Blackbrain_248:

(Start: 131 @142255 has 35 MA's), (166, 142294), (175, 142312), (192, 142345), (208, 142372), (224, 142405), (259, 142492), (274, 142534), (311, 142633),

Gene: BlueHusk_10 Start: 8940, Stop: 9374, Start Num: 116

Candidate Starts for BlueHusk_10:

(Start: 116 @8940 has 160 MA's), (147, 8979), (164, 9003), (209, 9084), (258, 9174), (282, 9237),

Gene: Bmoc_227 Start: 112807, Stop: 113247, Start Num: 143

Candidate Starts for Bmoc_227:

(Start: 118 @112771 has 4 MA's), (Start: 126 @112780 has 2 MA's), (Start: 143 @112807 has 12 MA's), (194, 112903), (217, 112954), (264, 113047), (293, 113119), (315, 113173), (330, 113206),

Gene: Bmoc_167 Start: 91666, Stop: 92031, Start Num: 159

Candidate Starts for Bmoc_167:

(Start: 159 @91666 has 2 MA's), (196, 91735), (233, 91822), (270, 91888),

Gene: BobBob_16 Start: 13466, Stop: 13912, Start Num: 116

Candidate Starts for BobBob_16:

(Start: 101 @13445 has 2 MA's), (Start: 109 @13457 has 2 MA's), (Start: 116 @13466 has 160 MA's), (Start: 142 @13496 has 2 MA's), (146, 13505), (233, 13676), (258, 13709), (268, 13751), (282, 13772), (301, 13817), (316, 13853),

Gene: BobaPhatt_241 Start: 141373, Stop: 141822, Start Num: 131

Candidate Starts for BobaPhatt_241:

(Start: 131 @141373 has 35 MA's), (166, 141412), (175, 141430), (192, 141463), (208, 141490), (224, 141523), (259, 141610), (274, 141652), (311, 141751),

Gene: BobsGarage_94 Start: 59815, Stop: 60228, Start Num: 135

Candidate Starts for BobsGarage_94:

(Start: 135 @59815 has 75 MA's), (204, 59926), (220, 59965), (225, 59974), (258, 60052), (295, 60124), (326, 60202), (334, 60220),

Gene: Boehler_10 Start: 8943, Stop: 9377, Start Num: 116

Candidate Starts for Boehler_10:

(Start: 116 @8943 has 160 MA's), (147, 8982), (164, 9006), (209, 9087), (258, 9177), (282, 9240),

Gene: Bogg_83 Start: 50869, Stop: 51315, Start Num: 111

Candidate Starts for Bogg_83:

(Start: 111 @50869 has 5 MA's), (Start: 151 @50923 has 5 MA's), (229, 51082), (258, 51121), (262, 51142), (312, 51253),

Gene: Boise_73 Start: 50699, Stop: 50262, Start Num: 157

Candidate Starts for Boise_73:

(97, 50783), (103, 50774), (Start: 157 @50699 has 1 MA's), (230, 50534), (251, 50489), (289, 50387), (296, 50369), (304, 50351),

Gene: Bonray_252 Start: 144055, Stop: 144504, Start Num: 131

Candidate Starts for Bonray_252:

(Start: 131 @144055 has 35 MA's), (166, 144094), (175, 144112), (192, 144145), (208, 144172), (224, 144205), (259, 144292), (274, 144334), (311, 144433),

Gene: BourbonZero_93 Start: 59266, Stop: 59673, Start Num: 135

Candidate Starts for BourbonZero_93:

(Start: 135 @59266 has 75 MA's), (158, 59287), (204, 59371), (224, 59416), (225, 59419), (258, 59497), (268, 59533), (315, 59620), (326, 59647),

Gene: Bowman_247 Start: 143170, Stop: 143619, Start Num: 131

Candidate Starts for Bowman_247:

(Start: 131 @143170 has 35 MA's), (166, 143209), (175, 143227), (192, 143260), (208, 143287), (224, 143320), (259, 143407), (274, 143449), (311, 143548),

Gene: BrainDrainer_97 Start: 59520, Stop: 59927, Start Num: 135

Candidate Starts for BrainDrainer_97:

(Start: 135 @59520 has 75 MA's), (158, 59541), (225, 59673), (263, 59769), (295, 59823), (315, 59874), (326, 59901), (327, 59904), (334, 59919),

Gene: Bread_246 Start: 142022, Stop: 142471, Start Num: 131

Candidate Starts for Bread_246:

(Start: 131 @142022 has 35 MA's), (166, 142061), (175, 142079), (192, 142112), (208, 142139), (224, 142172), (259, 142259), (274, 142301), (311, 142400),

Gene: Breeniome_140 Start: 81159, Stop: 81575, Start Num: 127

Candidate Starts for Breeniome_140:

(15, 80682), (Start: 127 @81159 has 25 MA's), (167, 81216), (198, 81279), (231, 81348), (261, 81393), (276, 81432),

Gene: Breezona_95 Start: 59815, Stop: 60228, Start Num: 135

Candidate Starts for Breezona_95:

(Start: 135 @59815 has 75 MA's), (204, 59926), (224, 59971), (225, 59974), (263, 60070), (295, 60124), (326, 60202), (334, 60220),

Gene: Bromden_96 Start: 60413, Stop: 60820, Start Num: 135

Candidate Starts for Bromden_96:

(Start: 135 @60413 has 75 MA's), (158, 60434), (171, 60449), (224, 60563), (225, 60566), (295, 60716), (315, 60767), (326, 60794), (334, 60812),

Gene: Bubbykins_121 Start: 68602, Stop: 68958, Start Num: 174

Candidate Starts for Bubbykins_121:

(141, 68548), (174, 68602), (180, 68620), (188, 68635), (212, 68671), (216, 68680), (220, 68695), (245, 68743), (247, 68746), (262, 68794), (263, 68797), (289, 68851),

Gene: Buckeye_10 Start: 8945, Stop: 9379, Start Num: 116

Candidate Starts for Buckeye_10:

(Start: 116 @8945 has 160 MA's), (147, 8984), (164, 9008), (209, 9089), (258, 9179), (282, 9242),

Gene: Burrough_141 Start: 83310, Stop: 83726, Start Num: 127

Candidate Starts for Burrough_141:

(15, 82833), (Start: 127 @83310 has 25 MA's), (167, 83367), (198, 83430), (231, 83499), (261, 83544), (276, 83583),

Gene: Buttons_27 Start: 21411, Stop: 21896, Start Num: 90

Candidate Starts for Buttons_27:

(Start: 90 @21411 has 1 MA's), (Start: 128 @21459 has 1 MA's), (224, 21630), (225, 21633), (246, 21672),

Gene: Bxz1_138 Start: 84513, Stop: 84929, Start Num: 127

Candidate Starts for Bxz1_138:

(15, 84036), (Start: 127 @84513 has 25 MA's), (167, 84570), (198, 84633), (231, 84702), (261, 84747), (276, 84786),

Gene: CMP1_50 Start: 47245, Stop: 46814, Start Num: 127

Candidate Starts for CMP1_50:

(Start: 127 @47245 has 25 MA's), (150, 47212), (218, 47098), (244, 47044), (331, 46864),

Gene: CN1A_74 Start: 54320, Stop: 53856, Start Num: 88

Candidate Starts for CN1A_74:

(88, 54320), (Start: 110 @54290 has 4 MA's), (217, 54131),

Gene: CN1A_67 Start: 52198, Stop: 51770, Start Num: 132

Candidate Starts for CN1A_67:

(56, 52336), (Start: 124 @52210 has 1 MA's), (Start: 132 @52198 has 1 MA's), (150, 52174), (213, 52066), (258, 51991), (310, 51853), (336, 51781),

Gene: Cactojaque_244 Start: 141201, Stop: 141650, Start Num: 131

Candidate Starts for Cactojaque_244:

(Start: 131 @141201 has 35 MA's), (166, 141240), (175, 141258), (192, 141291), (208, 141318), (224, 141351), (259, 141438), (274, 141480), (311, 141579),

Gene: Cadmus_220 Start: 113488, Stop: 113928, Start Num: 143

Candidate Starts for Cadmus_220:

(42, 113290), (43, 113293), (48, 113317), (55, 113329), (57, 113332), (78, 113401), (83, 113407), (91, 113416), (Start: 113 @113446 has 1 MA's), (Start: 118 @113452 has 4 MA's), (Start: 143 @113488 has 12 MA's), (194, 113584), (217, 113635), (264, 113728), (293, 113800), (315, 113854), (330, 113887),

Gene: Cafasso_94 Start: 55360, Stop: 55818, Start Num: 99

Candidate Starts for Cafasso_94:

(52, 55264), (Start: 99 @55360 has 11 MA's), (Start: 143 @55423 has 12 MA's), (263, 55645), (268, 55663),

Gene: Cali_136 Start: 83312, Stop: 83728, Start Num: 127

Candidate Starts for Cali_136:

(15, 82835), (Start: 127 @83312 has 25 MA's), (167, 83369), (198, 83432), (231, 83501), (261, 83546), (276, 83585),

Gene: Calm_92 Start: 57376, Stop: 57786, Start Num: 135

Candidate Starts for Calm_92:

(Start: 135 @57376 has 75 MA's), (168, 57406), (170, 57409), (189, 57454), (225, 57532), (248, 57574), (258, 57610), (277, 57652), (280, 57658), (305, 57706), (321, 57751), (334, 57778),

Gene: CamL_10 Start: 8940, Stop: 9374, Start Num: 116

Candidate Starts for CamL_10:

(Start: 116 @8940 has 160 MA's), (147, 8979), (164, 9003), (209, 9084), (258, 9174), (282, 9237),

Gene: CampRoach_10 Start: 8940, Stop: 9374, Start Num: 116

Candidate Starts for CampRoach_10:

(Start: 116 @8940 has 160 MA's), (147, 8979), (164, 9003), (209, 9084), (258, 9174), (282, 9237),

Gene: Cane17_133 Start: 84174, Stop: 84590, Start Num: 127

Candidate Starts for Cane17_133:

(15, 83697), (Start: 127 @84174 has 25 MA's), (167, 84231), (198, 84294), (231, 84363), (261, 84408), (276, 84447),

Gene: Cannibal_10 Start: 8943, Stop: 9377, Start Num: 116

Candidate Starts for Cannibal_10:

(Start: 116 @8943 has 160 MA's), (147, 8982), (164, 9006), (209, 9087), (258, 9177), (282, 9240),

Gene: Cantare_76 Start: 62423, Stop: 63022, Start Num: 66

Candidate Starts for Cantare_76:

(Start: 66 @62423 has 1 MA's), (73, 62441), (169, 62582), (261, 62819), (313, 62963), (318, 62978),

Gene: Caprice_29 Start: 9273, Stop: 9845, Start Num: 65

Candidate Starts for Caprice_29:

(65, 9273), (68, 9282), (Start: 149 @9402 has 1 MA's), (160, 9417), (189, 9474), (221, 9552), (267, 9645),

Gene: Cassini_41 Start: 28053, Stop: 28541, Start Num: 82

Candidate Starts for Cassini_41:

(51, 27969), (82, 28053), (150, 28143), (206, 28230), (258, 28320), (263, 28344), (295, 28416), (310, 28449), (335, 28524),

Gene: Chah_10 Start: 8941, Stop: 9375, Start Num: 116

Candidate Starts for Chah_10:

(Start: 116 @8941 has 160 MA's), (147, 8980), (164, 9004), (209, 9085), (258, 9175), (282, 9238),

Gene: Chargie21_247 Start: 140478, Stop: 140927, Start Num: 131

Candidate Starts for Chargie21_247:

(Start: 131 @140478 has 35 MA's), (166, 140517), (175, 140535), (192, 140568), (208, 140595), (224, 140628), (259, 140715), (274, 140757), (311, 140856),

Gene: Charles1_10 Start: 8943, Stop: 9377, Start Num: 116

Candidate Starts for Charles1_10:

(Start: 116 @8943 has 160 MA's), (147, 8982), (164, 9006), (209, 9087), (258, 9177), (282, 9240),

Gene: CharlieB_138 Start: 82195, Stop: 82611, Start Num: 127

Candidate Starts for CharlieB_138:

(15, 81718), (Start: 127 @82195 has 25 MA's), (167, 82252), (198, 82315), (231, 82384), (261, 82429), (276, 82468),

Gene: Charming_16 Start: 13468, Stop: 13914, Start Num: 116

Candidate Starts for Charming_16:

(Start: 101 @13447 has 2 MA's), (Start: 109 @13459 has 2 MA's), (Start: 116 @13468 has 160 MA's), (Start: 142 @13498 has 2 MA's), (146, 13507), (233, 13678), (258, 13711), (268, 13753), (282, 13774), (301, 13819), (316, 13855),

Gene: Chaser_95 Start: 58821, Stop: 59228, Start Num: 135

Candidate Starts for Chaser_95:

(Start: 135 @58821 has 75 MA's), (158, 58842), (171, 58857), (225, 58974), (263, 59070), (295, 59124), (315, 59175), (326, 59202), (327, 59205), (334, 59220),

Gene: CheetO_10 Start: 8943, Stop: 9377, Start Num: 116

Candidate Starts for CheetO_10:

(Start: 116 @8943 has 160 MA's), (147, 8982), (164, 9006), (209, 9087), (258, 9177), (282, 9240),

Gene: ChickenDinner_23 Start: 23332, Stop: 23961, Start Num: 44

Candidate Starts for ChickenDinner_23:

(27, 23233), (Start: 44 @23332 has 1 MA's), (49, 23353), (229, 23656), (267, 23767), (329, 23905),

Gene: ChickenPhender_137 Start: 81501, Stop: 81917, Start Num: 127

Candidate Starts for ChickenPhender_137:

(15, 81024), (Start: 127 @81501 has 25 MA's), (167, 81558), (198, 81621), (231, 81690), (261, 81735), (276, 81774),

Gene: Chipper1996_1010 Start: 63867, Stop: 64361, Start Num: 130

Candidate Starts for Chipper1996_1010:

(64, 63759), (77, 63798), (Start: 130 @63867 has 15 MA's), (179, 63951), (213, 64023), (229, 64062), (333, 64332),

Gene: Chocolat_100 Start: 63574, Stop: 64068, Start Num: 130

Candidate Starts for Chocolat_100:

(64, 63466), (77, 63505), (Start: 130 @63574 has 15 MA's), (179, 63658), (213, 63730), (229, 63769), (333, 64039),

Gene: Chubster_100 Start: 63814, Stop: 64308, Start Num: 130

Candidate Starts for Chubster_100:

(64, 63706), (77, 63745), (Start: 130 @63814 has 15 MA's), (179, 63898), (213, 63970), (229, 64009), (333, 64279),

Gene: Chunky_10 Start: 8943, Stop: 9377, Start Num: 116

Candidate Starts for Chunky_10:

(Start: 116 @8943 has 160 MA's), (147, 8982), (164, 9006), (209, 9087), (258, 9177), (282, 9240),

Gene: ChutneyChips_97 Start: 59567, Stop: 59974, Start Num: 135

Candidate Starts for ChutneyChips_97:

(Start: 135 @59567 has 75 MA's), (158, 59588), (171, 59603), (225, 59720), (263, 59816), (295, 59870), (315, 59921), (326, 59948), (327, 59951), (334, 59966),

Gene: CicholasNage_88 Start: 57029, Stop: 57439, Start Num: 135

Candidate Starts for CicholasNage_88:

(Start: 135 @57029 has 75 MA's), (168, 57059), (170, 57062), (189, 57107), (225, 57185), (248, 57227), (258, 57263), (277, 57305), (280, 57311), (305, 57359), (321, 57404), (334, 57431),

Gene: Claus_94 Start: 59528, Stop: 59941, Start Num: 135

Candidate Starts for Claus_94:

(Start: 135 @59528 has 75 MA's), (204, 59639), (220, 59678), (225, 59687), (258, 59765), (295, 59837), (326, 59915), (334, 59933),

Gene: Clautastrophe_90 Start: 59235, Stop: 59642, Start Num: 135

Candidate Starts for Clautastrophe_90:

(Start: 135 @59235 has 75 MA's), (158, 59256), (224, 59385), (225, 59388), (258, 59466), (268, 59502), (315, 59589), (326, 59616),

Gene: Cleatunium_242 Start: 141882, Stop: 142331, Start Num: 131

Candidate Starts for Cleatunium_242:

(Start: 131 @141882 has 35 MA's), (166, 141921), (175, 141939), (192, 141972), (208, 141999), (224, 142032), (259, 142119), (274, 142161), (311, 142260),

Gene: Cobra_10 Start: 8940, Stop: 9374, Start Num: 116

Candidate Starts for Cobra_10:

(Start: 116 @8940 has 160 MA's), (147, 8979), (164, 9003), (209, 9084), (258, 9174), (282, 9237),

Gene: Colbert_10 Start: 8940, Stop: 9374, Start Num: 116

Candidate Starts for Colbert_10:

(Start: 116 @8940 has 160 MA's), (147, 8979), (164, 9003), (209, 9084), (258, 9174), (282, 9237),

Gene: Coletti_10 Start: 8958, Stop: 9392, Start Num: 116

Candidate Starts for Coletti_10:

(Start: 116 @8958 has 160 MA's), (147, 8997), (164, 9021), (167, 9024), (209, 9102), (258, 9192), (282, 9255),

Gene: Colucci_103 Start: 64172, Stop: 64684, Start Num: 126

Candidate Starts for Colucci_103:

(Start: 126 @64172 has 2 MA's), (179, 64262), (211, 64316), (263, 64463), (265, 64472), (269, 64481), (323, 64610),

Gene: Compostia_13 Start: 10667, Stop: 11107, Start Num: 116

Candidate Starts for Compostia_13:

(Start: 116 @10667 has 160 MA's), (255, 10889), (263, 10919), (268, 10937), (339, 11102),

Gene: Concombres_255 Start: 144217, Stop: 144666, Start Num: 131

Candidate Starts for Concombres_255:

(Start: 131 @144217 has 35 MA's), (166, 144256), (175, 144274), (186, 144295), (192, 144307), (208, 144334), (224, 144367), (259, 144454),

Gene: Courthouse_162 Start: 84612, Stop: 85181, Start Num: 74
Candidate Starts for Courthouse_162:
(Start: 74 @84612 has 2 MA's), (Start: 102 @84654 has 1 MA's), (112, 84669), (230, 84891), (263, 84948), (270, 84969),

Gene: Craff_10 Start: 8943, Stop: 9377, Start Num: 116
Candidate Starts for Craff_10:
(Start: 116 @8943 has 160 MA's), (147, 8982), (164, 9006), (209, 9087), (258, 9177), (282, 9240),

Gene: Crater_54 Start: 35514, Stop: 35963, Start Num: 118
Candidate Starts for Crater_54:
(Start: 66 @35433 has 1 MA's), (Start: 118 @35514 has 4 MA's), (167, 35586), (219, 35682), (233, 35718), (297, 35847), (336, 35952),

Gene: Crossroads_95 Start: 59527, Stop: 59940, Start Num: 135
Candidate Starts for Crossroads_95:
(Start: 135 @59527 has 75 MA's), (204, 59638), (220, 59677), (225, 59686), (258, 59764), (295, 59836), (326, 59914), (334, 59932),

Gene: Cumberbatch_45 Start: 30201, Stop: 30692, Start Num: 84
Candidate Starts for Cumberbatch_45:
(Start: 84 @30201 has 12 MA's), (258, 30453), (261, 30468),

Gene: Cursive_225 Start: 113007, Stop: 113447, Start Num: 143
Candidate Starts for Cursive_225:
(43, 112812), (55, 112848), (78, 112920), (83, 112926), (91, 112935), (Start: 113 @112965 has 1 MA's), (Start: 118 @112971 has 4 MA's), (Start: 121 @112974 has 3 MA's), (Start: 126 @112980 has 2 MA's), (Start: 143 @113007 has 12 MA's), (194, 113103), (217, 113154), (264, 113247), (293, 113319), (315, 113373), (330, 113406),

Gene: DHan_98 Start: 59751, Stop: 60164, Start Num: 135
Candidate Starts for DHan_98:
(Start: 135 @59751 has 75 MA's), (204, 59862), (220, 59901), (225, 59910), (258, 59988), (295, 60060), (326, 60138), (334, 60156),

Gene: DaRealMyers_43 Start: 31471, Stop: 31983, Start Num: 98
Candidate Starts for DaRealMyers_43:
(Start: 98 @31471 has 4 MA's), (139, 31528), (293, 31804), (317, 31873),

Gene: Daka_10 Start: 8946, Stop: 9380, Start Num: 116
Candidate Starts for Daka_10:
(Start: 116 @8946 has 160 MA's), (147, 8985), (164, 9009), (209, 9090), (258, 9180), (282, 9243),

Gene: DanBing_94 Start: 59444, Stop: 59857, Start Num: 135
Candidate Starts for DanBing_94:
(Start: 135 @59444 has 75 MA's), (204, 59555), (220, 59594), (225, 59603), (258, 59681), (295, 59753), (326, 59831), (334, 59849),

Gene: Darko_249 Start: 142196, Stop: 142645, Start Num: 131
Candidate Starts for Darko_249:
(Start: 131 @142196 has 35 MA's), (166, 142235), (175, 142253), (192, 142286), (208, 142313), (224, 142346), (259, 142433), (274, 142475), (311, 142574),

Gene: Darolandstone_43 Start: 33080, Stop: 33595, Start Num: 96
Candidate Starts for Darolandstone_43:
(25, 32861), (47, 32987), (Start: 96 @33080 has 3 MA's), (129, 33119), (267, 33359),

Gene: Daubenski_216 Start: 113389, Stop: 113829, Start Num: 143
Candidate Starts for Daubenski_216:
(42, 113191), (43, 113194), (48, 113218), (55, 113230), (57, 113233), (78, 113302), (83, 113308), (91, 113317), (Start: 113 @113347 has 1 MA's), (Start: 118 @113353 has 4 MA's), (Start: 143 @113389 has 12 MA's), (194, 113485), (217, 113536), (264, 113629), (293, 113701), (315, 113755), (330, 113788),

Gene: Davielle_162 Start: 91589, Stop: 92011, Start Num: 134
Candidate Starts for Davielle_162:
(Start: 134 @91589 has 1 MA's), (Start: 137 @91595 has 1 MA's), (Start: 159 @91625 has 2 MA's), (196, 91694), (233, 91781), (270, 91847),

Gene: DeejaClivia_128 Start: 80469, Stop: 80885, Start Num: 127
Candidate Starts for DeejaClivia_128:
(15, 79992), (Start: 127 @80469 has 25 MA's), (167, 80526), (198, 80589), (231, 80658), (261, 80703), (276, 80742),

Gene: Demodog_256 Start: 144227, Stop: 144676, Start Num: 131
Candidate Starts for Demodog_256:
(Start: 131 @144227 has 35 MA's), (166, 144266), (175, 144284), (186, 144305), (192, 144317), (208, 144344), (224, 144377), (259, 144464),

Gene: Dingo_10 Start: 8940, Stop: 9374, Start Num: 116
Candidate Starts for Dingo_10:
(Start: 116 @8940 has 160 MA's), (147, 8979), (164, 9003), (209, 9084), (258, 9174), (282, 9237),

Gene: DirkDirk_88 Start: 56705, Stop: 57115, Start Num: 135
Candidate Starts for DirkDirk_88:
(Start: 135 @56705 has 75 MA's), (168, 56735), (170, 56738), (189, 56783), (225, 56861), (248, 56903), (258, 56939), (277, 56981), (280, 56987), (305, 57035), (321, 57080), (334, 57107),

Gene: DirtJuice_10 Start: 8943, Stop: 9377, Start Num: 116
Candidate Starts for DirtJuice_10:
(Start: 116 @8943 has 160 MA's), (147, 8982), (164, 9006), (209, 9087), (258, 9177), (282, 9240),

Gene: DoesntMatter_10 Start: 8940, Stop: 9374, Start Num: 116
Candidate Starts for DoesntMatter_10:
(Start: 116 @8940 has 160 MA's), (147, 8979), (164, 9003), (209, 9084), (258, 9174), (282, 9237),

Gene: Douge_96 Start: 58940, Stop: 59347, Start Num: 135
Candidate Starts for Douge_96:
(Start: 135 @58940 has 75 MA's), (158, 58961), (225, 59093), (263, 59189), (295, 59243), (315, 59294), (326, 59321), (327, 59324), (334, 59339),

Gene: Douzhi_96 Start: 59209, Stop: 59616, Start Num: 135
Candidate Starts for Douzhi_96:
(Start: 135 @59209 has 75 MA's), (158, 59230), (225, 59362), (263, 59458), (295, 59512), (315, 59563), (326, 59590), (327, 59593), (334, 59608),

Gene: DrSeegs_94 Start: 59815, Stop: 60228, Start Num: 135

Candidate Starts for DrSeegs_94:

(Start: 135 @59815 has 75 MA's), (204, 59926), (224, 59971), (225, 59974), (263, 60070), (295, 60124), (326, 60202), (334, 60220),

Gene: DrYang_96 Start: 63051, Stop: 63563, Start Num: 126

Candidate Starts for DrYang_96:

(Start: 126 @63051 has 2 MA's), (179, 63141), (209, 63192), (263, 63342), (265, 63351), (305, 63438),

Gene: DuncansLeg_92 Start: 59254, Stop: 59661, Start Num: 135

Candidate Starts for DuncansLeg_92:

(Start: 135 @59254 has 75 MA's), (158, 59275), (204, 59359), (224, 59404), (225, 59407), (258, 59485), (268, 59521), (315, 59608), (326, 59635),

Gene: Durga_10 Start: 8957, Stop: 9391, Start Num: 116

Candidate Starts for Durga_10:

(Start: 116 @8957 has 160 MA's), (147, 8996), (164, 9020), (209, 9101), (258, 9191), (282, 9254),

Gene: DyoEdafos_98 Start: 59531, Stop: 59938, Start Num: 135

Candidate Starts for DyoEdafos_98:

(Start: 135 @59531 has 75 MA's), (158, 59552), (171, 59567), (225, 59684), (240, 59720), (263, 59780), (295, 59834), (315, 59885), (326, 59912), (334, 59930),

Gene: EMSquaredA_63 Start: 42816, Stop: 43277, Start Num: 99

Candidate Starts for EMSquaredA_63:

(34, 42666), (36, 42669), (58, 42744), (60, 42747), (Start: 99 @42816 has 11 MA's), (108, 42822), (167, 42903), (215, 42999), (268, 43116),

Gene: Eastland_44 Start: 30161, Stop: 30652, Start Num: 84

Candidate Starts for Eastland_44:

(Start: 84 @30161 has 12 MA's), (258, 30413), (261, 30428),

Gene: EdgarPoe_100 Start: 63731, Stop: 64225, Start Num: 130

Candidate Starts for EdgarPoe_100:

(64, 63623), (77, 63662), (Start: 130 @63731 has 15 MA's), (179, 63815), (213, 63887), (229, 63926), (333, 64196),

Gene: Eklok_44 Start: 29960, Stop: 30451, Start Num: 84

Candidate Starts for Eklok_44:

(Start: 84 @29960 has 12 MA's), (258, 30212), (261, 30227),

Gene: Ellson_91 Start: 59569, Stop: 59976, Start Num: 135

Candidate Starts for Ellson_91:

(Start: 135 @59569 has 75 MA's), (158, 59590), (204, 59674), (224, 59719), (225, 59722), (258, 59800), (268, 59836), (315, 59923), (326, 59950),

Gene: ElvisPhasley_10 Start: 8944, Stop: 9378, Start Num: 116

Candidate Starts for ElvisPhasley_10:

(Start: 116 @8944 has 160 MA's), (147, 8983), (164, 9007), (209, 9088), (258, 9178), (282, 9241),

Gene: EmToTheThree_250 Start: 143104, Stop: 143553, Start Num: 131

Candidate Starts for EmToTheThree_250:

(Start: 131 @143104 has 35 MA's), (166, 143143), (175, 143161), (192, 143194), (208, 143221), (224, 143254), (259, 143341), (274, 143383), (311, 143482),

Gene: Emiris_10 Start: 8944, Stop: 9378, Start Num: 116

Candidate Starts for Emiris_10:

(Start: 116 @8944 has 160 MA's), (147, 8983), (164, 9007), (209, 9088), (258, 9178), (282, 9241),

Gene: EmpTee_10 Start: 8944, Stop: 9378, Start Num: 116

Candidate Starts for EmpTee_10:

(Start: 116 @8944 has 160 MA's), (147, 8983), (164, 9007), (209, 9088), (258, 9178), (282, 9241),

Gene: EnalisNailo_59 Start: 42622, Stop: 43077, Start Num: 99

Candidate Starts for EnalisNailo_59:

(39, 42490), (40, 42493), (58, 42550), (60, 42553), (Start: 99 @42622 has 11 MA's), (108, 42628), (Start: 127 @42649 has 25 MA's), (167, 42706), (196, 42763), (213, 42799), (268, 42916), (274, 42925), (299, 42985),

Gene: Enceladus_88 Start: 57406, Stop: 57816, Start Num: 135

Candidate Starts for Enceladus_88:

(Start: 135 @57406 has 75 MA's), (168, 57436), (170, 57439), (189, 57484), (225, 57562), (248, 57604), (258, 57640), (277, 57682), (280, 57688), (305, 57736), (321, 57781), (334, 57808),

Gene: Erdmann_251 Start: 143072, Stop: 143521, Start Num: 131

Candidate Starts for Erdmann_251:

(Start: 131 @143072 has 35 MA's), (166, 143111), (175, 143129), (192, 143162), (208, 143189), (224, 143222), (259, 143309), (274, 143351), (311, 143450),

Gene: Eremos_10 Start: 8937, Stop: 9371, Start Num: 116

Candidate Starts for Eremos_10:

(Start: 116 @8937 has 160 MA's), (147, 8976), (164, 9000), (209, 9081), (258, 9171), (282, 9234),

Gene: ErnieJ_243 Start: 139900, Stop: 140349, Start Num: 131

Candidate Starts for ErnieJ_243:

(Start: 131 @139900 has 35 MA's), (166, 139939), (175, 139957), (192, 139990), (208, 140017), (224, 140050), (259, 140137), (274, 140179), (311, 140278),

Gene: Etaye_10 Start: 8940, Stop: 9374, Start Num: 116

Candidate Starts for Etaye_10:

(Start: 116 @8940 has 160 MA's), (147, 8979), (164, 9003), (209, 9084), (258, 9174), (282, 9237),

Gene: Eugenia_10 Start: 8944, Stop: 9378, Start Num: 116

Candidate Starts for Eugenia_10:

(Start: 116 @8944 has 160 MA's), (147, 8983), (164, 9007), (209, 9088), (258, 9178), (282, 9241),

Gene: Eureka_81 Start: 51417, Stop: 51863, Start Num: 111

Candidate Starts for Eureka_81:

(92, 51393), (Start: 111 @51417 has 5 MA's), (Start: 151 @51471 has 5 MA's), (229, 51630), (258, 51669), (262, 51690), (312, 51801),

Gene: Faith1_95 Start: 59452, Stop: 59865, Start Num: 135

Candidate Starts for Faith1_95:

(Start: 135 @59452 has 75 MA's), (204, 59563), (224, 59608), (225, 59611), (263, 59707), (295, 59761), (326, 59839), (334, 59857),

Gene: Faja_72 Start: 38688, Stop: 39140, Start Num: 152

Candidate Starts for Faja_72:

(45, 38511), (Start: 121 @38652 has 3 MA's), (Start: 127 @38658 has 25 MA's), (Start: 152 @38688 has 3 MA's), (319, 39084),

Gene: Fang_10 Start: 8944, Stop: 9378, Start Num: 116

Candidate Starts for Fang_10:

(Start: 116 @8944 has 160 MA's), (147, 8983), (164, 9007), (209, 9088), (258, 9178), (282, 9241),

Gene: FarmResident_97 Start: 59091, Stop: 59498, Start Num: 135

Candidate Starts for FarmResident_97:

(Start: 135 @59091 has 75 MA's), (158, 59112), (171, 59127), (225, 59244), (263, 59340), (295, 59394), (315, 59445), (326, 59472), (327, 59475), (334, 59490),

Gene: Finch_155 Start: 99620, Stop: 100087, Start Num: 113

Candidate Starts for Finch_155:

(67, 99545), (Start: 113 @99620 has 1 MA's), (199, 99755), (228, 99824), (235, 99845), (249, 99869), (291, 99977), (298, 99995), (320, 100046),

Gene: Finch_154 Start: 99144, Stop: 99620, Start Num: 117

Candidate Starts for Finch_154:

(Start: 117 @99144 has 1 MA's), (154, 99192), (235, 99372), (266, 99462), (271, 99477), (324, 99588),

Gene: Finch_57 Start: 47485, Stop: 47922, Start Num: 110

Candidate Starts for Finch_57:

(Start: 110 @47485 has 4 MA's), (120, 47497), (Start: 152 @47542 has 3 MA's), (218, 47668), (231, 47695), (241, 47713), (276, 47779), (294, 47824), (322, 47881), (323, 47884),

Gene: Finemlucis_96 Start: 60566, Stop: 60979, Start Num: 135

Candidate Starts for Finemlucis_96:

(Start: 135 @60566 has 75 MA's), (204, 60677), (220, 60716), (225, 60725), (258, 60803), (295, 60875), (326, 60953), (334, 60971),

Gene: Finnry_92 Start: 59588, Stop: 59995, Start Num: 135

Candidate Starts for Finnry_92:

(Start: 135 @59588 has 75 MA's), (158, 59609), (224, 59738), (225, 59741), (258, 59819), (268, 59855), (315, 59942), (326, 59969),

Gene: Fixie_249 Start: 143337, Stop: 143786, Start Num: 131

Candidate Starts for Fixie_249:

(Start: 131 @143337 has 35 MA's), (166, 143376), (175, 143394), (192, 143427), (208, 143454), (224, 143487), (259, 143574), (274, 143616), (311, 143715),

Gene: Floral_64 Start: 44701, Stop: 45162, Start Num: 99

Candidate Starts for Floral_64:

(34, 44551), (36, 44554), (58, 44629), (60, 44632), (Start: 99 @44701 has 11 MA's), (108, 44707), (167, 44788), (215, 44884), (268, 45001),

Gene: Fludd_142 Start: 82309, Stop: 82725, Start Num: 127

Candidate Starts for Fludd_142:

(15, 81832), (Start: 127 @82309 has 25 MA's), (167, 82366), (198, 82429), (231, 82498), (261, 82543), (276, 82582),

Gene: FluffyNinja_10 Start: 8941, Stop: 9375, Start Num: 116
Candidate Starts for FluffyNinja_10:
(Start: 116 @8941 has 160 MA's), (147, 8980), (164, 9004), (209, 9085), (258, 9175), (282, 9238),

Gene: Footloose_54 Start: 31404, Stop: 31829, Start Num: 119
Candidate Starts for Footloose_54:
(38, 31218), (53, 31281), (Start: 119 @31404 has 1 MA's), (197, 31515), (203, 31530), (278, 31677),
(279, 31680), (336, 31818),

Gene: Fosterous_16 Start: 14357, Stop: 14803, Start Num: 116
Candidate Starts for Fosterous_16:
(Start: 101 @14336 has 2 MA's), (Start: 109 @14348 has 2 MA's), (Start: 116 @14357 has 160 MA's),
(Start: 142 @14387 has 2 MA's), (146, 14396), (233, 14567), (258, 14600), (268, 14642), (282, 14663),
(301, 14708), (316, 14744),

Gene: FoxtrotP1_248 Start: 143658, Stop: 144107, Start Num: 131
Candidate Starts for FoxtrotP1_248:
(Start: 131 @143658 has 35 MA's), (166, 143697), (175, 143715), (192, 143748), (208, 143775), (224,
143808), (259, 143895), (274, 143937), (311, 144036),

Gene: Frankicide_10 Start: 8945, Stop: 9379, Start Num: 116
Candidate Starts for Frankicide_10:
(Start: 116 @8945 has 160 MA's), (147, 8984), (164, 9008), (209, 9089), (258, 9179), (282, 9242),

Gene: Fransoyer_69 Start: 49557, Stop: 49093, Start Num: 122
Candidate Starts for Fransoyer_69:
(80, 49611), (Start: 122 @49557 has 1 MA's), (190, 49434), (264, 49263), (270, 49248), (275, 49242),

Gene: FriarPreacher_10 Start: 8946, Stop: 9380, Start Num: 116
Candidate Starts for FriarPreacher_10:
(Start: 116 @8946 has 160 MA's), (147, 8985), (164, 9009), (209, 9090), (258, 9180), (282, 9243),

Gene: Fringe_10 Start: 8941, Stop: 9375, Start Num: 116
Candidate Starts for Fringe_10:
(Start: 116 @8941 has 160 MA's), (147, 8980), (164, 9004), (209, 9085), (258, 9175), (282, 9238),

Gene: FrumpyGal_45 Start: 30161, Stop: 30652, Start Num: 84
Candidate Starts for FrumpyGal_45:
(Start: 84 @30161 has 12 MA's), (258, 30413), (261, 30428),

Gene: FudgeTart_245 Start: 142162, Stop: 142611, Start Num: 131
Candidate Starts for FudgeTart_245:
(Start: 131 @142162 has 35 MA's), (166, 142201), (175, 142219), (192, 142252), (208, 142279), (224,
142312), (259, 142399), (274, 142441), (311, 142540),

Gene: GMA6_35 Start: 29073, Stop: 29516, Start Num: 136
Candidate Starts for GMA6_35:
(Start: 128 @29058 has 1 MA's), (136, 29073), (Start: 143 @29082 has 12 MA's), (169, 29121), (177,
29145), (232, 29274), (236, 29286), (238, 29289), (243, 29301), (295, 29424),

Gene: GMA6_79 Start: 60811, Stop: 61245, Start Num: 110
Candidate Starts for GMA6_79:

(Start: 110 @60811 has 4 MA's), (138, 60850), (167, 60892), (196, 60946), (207, 60967), (256, 61051), (261, 61072),

Gene: Gabriela_95 Start: 58798, Stop: 59211, Start Num: 135

Candidate Starts for Gabriela_95:

(Start: 135 @58798 has 75 MA's), (204, 58909), (224, 58954), (225, 58957), (263, 59053), (295, 59107), (326, 59185), (334, 59203),

Gene: GageAP_46 Start: 34874, Stop: 34401, Start Num: 132

Candidate Starts for GageAP_46:

(Start: 132 @34874 has 1 MA's), (144, 34859), (189, 34787), (197, 34772), (228, 34709), (247, 34670), (263, 34616), (281, 34574), (292, 34538), (314, 34484),

Gene: Gaia_17 Start: 16945, Stop: 17430, Start Num: 115

Candidate Starts for Gaia_17:

(Start: 115 @16945 has 2 MA's), (123, 16954), (233, 17170), (261, 17209), (263, 17218), (287, 17269), (332, 17368),

Gene: Galadriel_20 Start: 14216, Stop: 14662, Start Num: 116

Candidate Starts for Galadriel_20:

(Start: 101 @14195 has 2 MA's), (Start: 109 @14207 has 2 MA's), (Start: 116 @14216 has 160 MA's), (Start: 142 @14246 has 2 MA's), (146, 14255), (233, 14426), (258, 14459), (268, 14501), (282, 14522), (301, 14567), (316, 14603),

Gene: Gardann_95 Start: 59299, Stop: 59712, Start Num: 135

Candidate Starts for Gardann_95:

(Start: 135 @59299 has 75 MA's), (204, 59410), (220, 59449), (225, 59458), (258, 59536), (295, 59608), (326, 59686), (334, 59704),

Gene: GeneCoco_10 Start: 8949, Stop: 9383, Start Num: 116

Candidate Starts for GeneCoco_10:

(Start: 116 @8949 has 160 MA's), (147, 8988), (164, 9012), (209, 9093), (258, 9183), (282, 9246),

Gene: Geodirt_33 Start: 32468, Stop: 31986, Start Num: 124

Candidate Starts for Geodirt_33:

(50, 32606), (69, 32552), (70, 32549), (104, 32495), (Start: 124 @32468 has 1 MA's), (218, 32285), (224, 32273), (287, 32111), (305, 32066),

Gene: Gizmo_255 Start: 144989, Stop: 145438, Start Num: 131

Candidate Starts for Gizmo_255:

(Start: 131 @144989 has 35 MA's), (166, 145028), (175, 145046), (192, 145079), (208, 145106), (224, 145139), (259, 145226), (274, 145268), (311, 145367),

Gene: Goku_81 Start: 51146, Stop: 51592, Start Num: 111

Candidate Starts for Goku_81:

(92, 51122), (Start: 111 @51146 has 5 MA's), (Start: 151 @51200 has 5 MA's), (229, 51359), (258, 51398), (262, 51419), (312, 51530),

Gene: Gophee_10 Start: 8943, Stop: 9377, Start Num: 116

Candidate Starts for Gophee_10:

(Start: 116 @8943 has 160 MA's), (147, 8982), (164, 9006), (209, 9087), (258, 9177), (282, 9240),

Gene: Grayson_217 Start: 108140, Stop: 108661, Start Num: 125

Candidate Starts for Grayson_217:

(105, 108113), (108, 108119), (Start: 125 @108140 has 1 MA's), (180, 108236), (226, 108338), (232, 108356), (234, 108365), (236, 108368), (328, 108605),

Gene: GuuelaD_92 Start: 59411, Stop: 59824, Start Num: 135

Candidate Starts for GuuelaD_92:

(Start: 135 @59411 has 75 MA's), (204, 59522), (220, 59561), (225, 59570), (258, 59648), (295, 59720), (326, 59798), (334, 59816),

Gene: Gwendoluna_12 Start: 7666, Stop: 8121, Start Num: 110

Candidate Starts for Gwendoluna_12:

(Start: 110 @7666 has 4 MA's), (Start: 137 @7699 has 1 MA's), (195, 7786), (220, 7846), (239, 7888), (265, 7966), (268, 7975), (306, 8056), (322, 8095),

Gene: Gwennie1_10 Start: 8961, Stop: 9395, Start Num: 116

Candidate Starts for Gwennie1_10:

(Start: 116 @8961 has 160 MA's), (147, 9000), (164, 9024), (209, 9105), (258, 9195), (282, 9258),

Gene: Gwilliam_10 Start: 8940, Stop: 9374, Start Num: 116

Candidate Starts for Gwilliam_10:

(Start: 116 @8940 has 160 MA's), (147, 8979), (164, 9003), (209, 9084), (258, 9174), (282, 9237),

Gene: Gyarad_0010 Start: 8943, Stop: 9377, Start Num: 116

Candidate Starts for Gyarad_0010:

(Start: 116 @8943 has 160 MA's), (147, 8982), (164, 9006), (209, 9087), (258, 9177), (282, 9240),

Gene: HFrancette_45 Start: 30939, Stop: 31430, Start Num: 84

Candidate Starts for HFrancette_45:

(Start: 84 @30939 has 12 MA's), (258, 31191), (261, 31206),

Gene: HSavage_10 Start: 8945, Stop: 9379, Start Num: 116

Candidate Starts for HSavage_10:

(Start: 116 @8945 has 160 MA's), (147, 8984), (164, 9008), (209, 9089), (258, 9179), (282, 9242),

Gene: Hafay_96 Start: 59523, Stop: 59936, Start Num: 135

Candidate Starts for Hafay_96:

(Start: 135 @59523 has 75 MA's), (204, 59634), (220, 59673), (225, 59682), (258, 59760), (295, 59832), (326, 59910), (334, 59928),

Gene: Haimas_10 Start: 8943, Stop: 9377, Start Num: 116

Candidate Starts for Haimas_10:

(Start: 116 @8943 has 160 MA's), (147, 8982), (164, 9006), (209, 9087), (258, 9177), (282, 9240),

Gene: Halena_88 Start: 56292, Stop: 56702, Start Num: 135

Candidate Starts for Halena_88:

(Start: 135 @56292 has 75 MA's), (168, 56322), (170, 56325), (189, 56370), (225, 56448), (248, 56490), (258, 56526), (277, 56568), (280, 56574), (305, 56622), (321, 56667), (334, 56694),

Gene: Hamish_10 Start: 8943, Stop: 9377, Start Num: 116

Candidate Starts for Hamish_10:

(Start: 116 @8943 has 160 MA's), (147, 8982), (164, 9006), (209, 9087), (258, 9177), (282, 9240),

Gene: Hannaconda_99 Start: 57411, Stop: 57815, Start Num: 184

Candidate Starts for Hannaconda_99:

(72, 57240), (91, 57273), (106, 57291), (153, 57348), (Start: 184 @57411 has 1 MA's), (192, 57426), (201, 57444), (224, 57501), (227, 57507), (254, 57567), (286, 57660), (337, 57801),

Gene: Hartsy_10 Start: 8940, Stop: 9374, Start Num: 116

Candidate Starts for Hartsy_10:

(Start: 116 @8940 has 160 MA's), (147, 8979), (164, 9003), (209, 9084), (258, 9174), (282, 9237),

Gene: Harvey_10 Start: 8944, Stop: 9378, Start Num: 116

Candidate Starts for Harvey_10:

(Start: 116 @8944 has 160 MA's), (147, 8983), (164, 9007), (209, 9088), (258, 9178), (282, 9241),

Gene: Hertubise_10 Start: 8943, Stop: 9377, Start Num: 116

Candidate Starts for Hertubise_10:

(Start: 116 @8943 has 160 MA's), (147, 8982), (164, 9006), (209, 9087), (258, 9177), (282, 9240),

Gene: Hestia_63 Start: 34911, Stop: 35363, Start Num: 152

Candidate Starts for Hestia_63:

(45, 34734), (Start: 121 @34875 has 3 MA's), (Start: 127 @34881 has 25 MA's), (Start: 152 @34911 has 3 MA's), (319, 35307),

Gene: Hetaeria_10 Start: 8943, Stop: 9377, Start Num: 116

Candidate Starts for Hetaeria_10:

(Start: 116 @8943 has 160 MA's), (147, 8982), (164, 9006), (209, 9087), (258, 9177), (282, 9240),

Gene: Horchata_10 Start: 8942, Stop: 9376, Start Num: 116

Candidate Starts for Horchata_10:

(Start: 116 @8942 has 160 MA's), (147, 8981), (164, 9005), (209, 9086), (258, 9176), (282, 9239),

Gene: HumptyDumpty_100 Start: 63534, Stop: 64028, Start Num: 130

Candidate Starts for HumptyDumpty_100:

(64, 63426), (77, 63465), (Start: 130 @63534 has 15 MA's), (179, 63618), (213, 63690), (229, 63729), (333, 63999),

Gene: HyRo_132 Start: 82234, Stop: 82650, Start Num: 127

Candidate Starts for HyRo_132:

(15, 81757), (Start: 127 @82234 has 25 MA's), (167, 82291), (198, 82354), (231, 82423), (261, 82468), (276, 82507),

Gene: Ididsumtinwong_46 Start: 30014, Stop: 30484, Start Num: 107

Candidate Starts for Ididsumtinwong_46:

(Start: 76 @29978 has 2 MA's), (Start: 107 @30014 has 3 MA's), (263, 30272), (268, 30290), (281, 30311),

Gene: Ignacio_44 Start: 30842, Stop: 31333, Start Num: 84

Candidate Starts for Ignacio_44:

(Start: 84 @30842 has 12 MA's), (258, 31094), (261, 31109),

Gene: Inchworm_10 Start: 8940, Stop: 9374, Start Num: 116

Candidate Starts for Inchworm_10:

(Start: 116 @8940 has 160 MA's), (147, 8979), (164, 9003), (209, 9084), (258, 9174), (282, 9237),

Gene: Inverness_10 Start: 8945, Stop: 9379, Start Num: 116

Candidate Starts for Inverness_10:

(Start: 116 @8945 has 160 MA's), (147, 8984), (164, 9008), (209, 9089), (258, 9179), (282, 9242),

Gene: Iridoclysis_10 Start: 8947, Stop: 9381, Start Num: 116

Candidate Starts for Iridoclysis_10:

(Start: 116 @8947 has 160 MA's), (147, 8986), (164, 9010), (209, 9091), (258, 9181), (282, 9244),

Gene: IrishSherpFalk_88 Start: 51234, Stop: 51749, Start Num: 84

Candidate Starts for IrishSherpFalk_88:

(Start: 84 @51234 has 12 MA's), (Start: 87 @51237 has 1 MA's), (140, 51297), (229, 51474), (262, 51534), (303, 51621), (332, 51687), (338, 51720),

Gene: IsaacEli_10 Start: 8940, Stop: 9374, Start Num: 116

Candidate Starts for IsaacEli_10:

(Start: 116 @8940 has 160 MA's), (147, 8979), (164, 9003), (209, 9084), (258, 9174), (282, 9237),

Gene: Issimir_243 Start: 142261, Stop: 142710, Start Num: 131

Candidate Starts for Issimir_243:

(Start: 131 @142261 has 35 MA's), (166, 142300), (175, 142318), (192, 142351), (208, 142378), (224, 142411), (259, 142498), (274, 142540), (311, 142639),

Gene: Itos_95 Start: 58358, Stop: 58771, Start Num: 135

Candidate Starts for Itos_95:

(Start: 135 @58358 has 75 MA's), (204, 58469), (224, 58514), (225, 58517), (263, 58613), (295, 58667), (326, 58745), (334, 58763),

Gene: JPickles_247 Start: 141311, Stop: 141760, Start Num: 131

Candidate Starts for JPickles_247:

(Start: 131 @141311 has 35 MA's), (166, 141350), (175, 141368), (192, 141401), (208, 141428), (224, 141461), (259, 141548), (274, 141590), (311, 141689),

Gene: JaNo_99 Start: 63505, Stop: 63999, Start Num: 130

Candidate Starts for JaNo_99:

(64, 63397), (77, 63436), (Start: 130 @63505 has 15 MA's), (179, 63589), (213, 63661), (229, 63700), (333, 63970),

Gene: JacAttac_10 Start: 8940, Stop: 9374, Start Num: 116

Candidate Starts for JacAttac_10:

(Start: 116 @8940 has 160 MA's), (147, 8979), (164, 9003), (209, 9084), (258, 9174), (282, 9237),

Gene: Jalammah_18 Start: 10634, Stop: 11050, Start Num: 163

Candidate Starts for Jalammah_18:

(79, 10535), (89, 10544), (Start: 128 @10595 has 1 MA's), (Start: 163 @10634 has 1 MA's), (222, 10763), (224, 10766), (225, 10769), (239, 10802), (246, 10808), (257, 10844), (270, 10892), (283, 10913),

Gene: JangoPhett_10 Start: 8941, Stop: 9375, Start Num: 116

Candidate Starts for JangoPhett_10:

(Start: 116 @8941 has 160 MA's), (147, 8980), (164, 9004), (209, 9085), (258, 9175), (282, 9238),

Gene: Janiyra_253 Start: 142848, Stop: 143297, Start Num: 131

Candidate Starts for Janiyra_253:

(Start: 131 @142848 has 35 MA's), (166, 142887), (175, 142905), (192, 142938), (208, 142965), (224, 142998), (259, 143085), (274, 143127), (311, 143226),

Gene: Jessibeth14_140 Start: 83080, Stop: 83496, Start Num: 127

Candidate Starts for Jessibeth14_140:

(15, 82603), (Start: 127 @83080 has 25 MA's), (167, 83137), (198, 83200), (231, 83269), (261, 83314), (276, 83353),

Gene: Jobypre_92 Start: 59235, Stop: 59642, Start Num: 135

Candidate Starts for Jobypre_92:

(Start: 135 @59235 has 75 MA's), (158, 59256), (224, 59385), (225, 59388), (258, 59466), (268, 59502), (315, 59589), (326, 59616),

Gene: JoeDirt_92 Start: 57967, Stop: 58377, Start Num: 135

Candidate Starts for JoeDirt_92:

(Start: 135 @57967 has 75 MA's), (168, 57997), (170, 58000), (189, 58045), (225, 58123), (248, 58165), (258, 58201), (277, 58243), (280, 58249), (305, 58297), (321, 58342), (334, 58369),

Gene: JohnLord_44 Start: 39902, Stop: 39378, Start Num: 115

Candidate Starts for JohnLord_44:

(Start: 115 @39902 has 2 MA's), (148, 39854), (167, 39827), (230, 39713), (258, 39680), (263, 39656), (309, 39554), (340, 39458), (342, 39404),

Gene: Jubie_91 Start: 59370, Stop: 59777, Start Num: 135

Candidate Starts for Jubie_91:

(Start: 135 @59370 has 75 MA's), (158, 59391), (224, 59520), (225, 59523), (258, 59601), (268, 59637), (315, 59724), (326, 59751),

Gene: KBurrousTX_96 Start: 64281, Stop: 64742, Start Num: 130

Candidate Starts for KBurrousTX_96:

(Start: 130 @64281 has 15 MA's), (144, 64299), (203, 64410), (242, 64503), (253, 64521), (258, 64536), (271, 64584),

Gene: KLucky39_10 Start: 8943, Stop: 9377, Start Num: 116

Candidate Starts for KLucky39_10:

(Start: 116 @8943 has 160 MA's), (147, 8982), (164, 9006), (209, 9087), (258, 9177), (282, 9240),

Gene: Kabreeze_100 Start: 63591, Stop: 64085, Start Num: 130

Candidate Starts for Kabreeze_100:

(64, 63483), (77, 63522), (Start: 130 @63591 has 15 MA's), (179, 63675), (213, 63747), (229, 63786), (333, 64056),

Gene: Kahlid_94 Start: 59217, Stop: 59630, Start Num: 135

Candidate Starts for Kahlid_94:

(Start: 135 @59217 has 75 MA's), (204, 59328), (220, 59367), (225, 59376), (258, 59454), (295, 59526), (326, 59604), (334, 59622),

Gene: Kailash_10 Start: 8952, Stop: 9386, Start Num: 116

Candidate Starts for Kailash_10:

(Start: 116 @8952 has 160 MA's), (147, 8991), (164, 9015), (209, 9096), (258, 9186), (282, 9249),

Gene: Katniss_10 Start: 8944, Stop: 9378, Start Num: 116

Candidate Starts for Katniss_10:

(Start: 116 @8944 has 160 MA's), (147, 8983), (164, 9007), (209, 9088), (258, 9178), (282, 9241),

Gene: Keitabear_20 Start: 16560, Stop: 17006, Start Num: 116

Candidate Starts for Keitabear_20:

(Start: 101 @16539 has 2 MA's), (Start: 109 @16551 has 2 MA's), (Start: 116 @16560 has 160 MA's), (Start: 142 @16590 has 2 MA's), (146, 16599), (233, 16770), (258, 16803), (268, 16845), (282, 16866), (301, 16911), (316, 16947),

Gene: Keitherie_10 Start: 8957, Stop: 9391, Start Num: 116

Candidate Starts for Keitherie_10:

(Start: 116 @8957 has 160 MA's), (147, 8996), (164, 9020), (167, 9023), (209, 9101), (258, 9191), (282, 9254),

Gene: KentuckyRacer_110 Start: 73819, Stop: 74262, Start Num: 151

Candidate Starts for KentuckyRacer_110:

(Start: 151 @73819 has 5 MA's), (258, 74038), (261, 74053), (272, 74089),

Gene: Kikipoo_10 Start: 8940, Stop: 9374, Start Num: 116

Candidate Starts for Kikipoo_10:

(Start: 116 @8940 has 160 MA's), (147, 8979), (164, 9003), (209, 9084), (258, 9174), (282, 9237),

Gene: KingVeVeVe_10 Start: 8944, Stop: 9378, Start Num: 116

Candidate Starts for KingVeVeVe_10:

(Start: 116 @8944 has 160 MA's), (147, 8983), (164, 9007), (209, 9088), (258, 9178), (282, 9241),

Gene: Kingsolomon_90 Start: 59344, Stop: 59751, Start Num: 135

Candidate Starts for Kingsolomon_90:

(Start: 135 @59344 has 75 MA's), (158, 59365), (224, 59494), (225, 59497), (258, 59575), (268, 59611), (315, 59698), (326, 59725),

Gene: KirDoubleO7_90 Start: 59256, Stop: 59663, Start Num: 135

Candidate Starts for KirDoubleO7_90:

(Start: 135 @59256 has 75 MA's), (158, 59277), (204, 59361), (224, 59406), (225, 59409), (258, 59487), (268, 59523), (315, 59610), (326, 59637),

Gene: Kithara_58 Start: 44459, Stop: 44022, Start Num: 155

Candidate Starts for Kithara_58:

(Start: 133 @44489 has 2 MA's), (Start: 155 @44459 has 1 MA's), (257, 44243),

Gene: KlimbOn_10 Start: 8943, Stop: 9377, Start Num: 116

Candidate Starts for KlimbOn_10:

(Start: 116 @8943 has 160 MA's), (147, 8982), (164, 9006), (209, 9087), (258, 9177), (282, 9240),

Gene: Kloppinator_10 Start: 8941, Stop: 9375, Start Num: 116

Candidate Starts for Kloppinator_10:

(Start: 116 @8941 has 160 MA's), (147, 8980), (164, 9004), (209, 9085), (258, 9175), (282, 9238),

Gene: Koguma_138 Start: 80718, Stop: 81134, Start Num: 127

Candidate Starts for Koguma_138:

(15, 80241), (Start: 127 @80718 has 25 MA's), (167, 80775), (198, 80838), (231, 80907), (261, 80952), (276, 80991),

Gene: Kroos_19 Start: 14665, Stop: 15102, Start Num: 142

Candidate Starts for Kroos_19:

(Start: 109 @14620 has 2 MA's), (Start: 116 @14629 has 160 MA's), (Start: 142 @14665 has 2 MA's), (172, 14716), (209, 14782), (268, 14926), (282, 14947),

Gene: Kropertea_91 Start: 58811, Stop: 59221, Start Num: 135

Candidate Starts for Kropertea_91:

(Start: 135 @58811 has 75 MA's), (158, 58832), (171, 58847), (225, 58967), (240, 59003), (263, 59063), (295, 59117), (315, 59168), (326, 59195), (334, 59213),

Gene: Krypton555_94 Start: 59747, Stop: 60154, Start Num: 135

Candidate Starts for Krypton555_94:

(Start: 135 @59747 has 75 MA's), (158, 59768), (204, 59852), (224, 59897), (225, 59900), (258, 59978), (268, 60014), (315, 60101), (326, 60128),

Gene: Kumotta_56 Start: 32485, Stop: 32964, Start Num: 100

Candidate Starts for Kumotta_56:

(46, 32380), (95, 32479), (Start: 100 @32485 has 1 MA's), (219, 32686), (227, 32701), (258, 32743), (290, 32827),

Gene: Kwobi_20 Start: 14596, Stop: 15078, Start Num: 109

Candidate Starts for Kwobi_20:

(Start: 109 @14596 has 2 MA's), (Start: 116 @14605 has 160 MA's), (Start: 142 @14641 has 2 MA's), (172, 14692), (209, 14758), (268, 14902), (282, 14923),

Gene: LRRHood_134 Start: 82526, Stop: 82942, Start Num: 127

Candidate Starts for LRRHood_134:

(15, 82049), (Start: 127 @82526 has 25 MA's), (167, 82583), (198, 82646), (231, 82715), (261, 82760), (276, 82799),

Gene: Larnav_222 Start: 113173, Stop: 113613, Start Num: 143

Candidate Starts for Larnav_222:

(43, 112978), (55, 113014), (78, 113086), (83, 113092), (91, 113101), (Start: 113 @113131 has 1 MA's), (Start: 118 @113137 has 4 MA's), (Start: 121 @113140 has 3 MA's), (Start: 126 @113146 has 2 MA's), (Start: 143 @113173 has 12 MA's), (194, 113269), (217, 113320), (264, 113413), (293, 113485), (315, 113539), (330, 113572),

Gene: LasagnaCat_10 Start: 8952, Stop: 9386, Start Num: 116

Candidate Starts for LasagnaCat_10:

(Start: 116 @8952 has 160 MA's), (147, 8991), (164, 9015), (209, 9096), (258, 9186), (282, 9249),

Gene: Lasker_72 Start: 38250, Stop: 38732, Start Num: 127

Candidate Starts for Lasker_72:

(45, 38103), (Start: 121 @38244 has 3 MA's), (Start: 127 @38250 has 25 MA's), (Start: 152 @38280 has 3 MA's), (319, 38676),

Gene: Lasso_10 Start: 8943, Stop: 9377, Start Num: 116

Candidate Starts for Lasso_10:

(Start: 116 @8943 has 160 MA's), (147, 8982), (164, 9006), (209, 9087), (258, 9177), (282, 9240),

Gene: LeBron_90 Start: 56599, Stop: 57009, Start Num: 135

Candidate Starts for LeBron_90:

(Start: 135 @56599 has 75 MA's), (168, 56629), (170, 56632), (189, 56677), (225, 56755), (248, 56797), (258, 56833), (277, 56875), (280, 56881), (305, 56929), (321, 56974), (334, 57001),

Gene: Lee7_249 Start: 144611, Stop: 145060, Start Num: 131

Candidate Starts for Lee7_249:

(Start: 131 @144611 has 35 MA's), (166, 144650), (175, 144668), (192, 144701), (208, 144728), (224, 144761), (259, 144848), (274, 144890), (311, 144989),

Gene: LeeLot_10 Start: 8943, Stop: 9377, Start Num: 116

Candidate Starts for LeeLot_10:

(Start: 116 @8943 has 160 MA's), (147, 8982), (164, 9006), (209, 9087), (258, 9177), (282, 9240),

Gene: Lego3393_10 Start: 8941, Stop: 9375, Start Num: 116

Candidate Starts for Lego3393_10:

(Start: 116 @8941 has 160 MA's), (147, 8980), (164, 9004), (209, 9085), (258, 9175), (282, 9238),

Gene: Lennon_20 Start: 15643, Stop: 16110, Start Num: 101

Candidate Starts for Lennon_20:

(Start: 101 @15643 has 2 MA's), (Start: 109 @15655 has 2 MA's), (Start: 116 @15664 has 160 MA's), (Start: 142 @15694 has 2 MA's), (146, 15703), (233, 15874), (258, 15907), (268, 15949), (282, 15970), (301, 16015), (316, 16051),

Gene: Lewan_96 Start: 59451, Stop: 59864, Start Num: 135

Candidate Starts for Lewan_96:

(Start: 135 @59451 has 75 MA's), (204, 59562), (220, 59601), (225, 59610), (258, 59688), (295, 59760), (326, 59838), (334, 59856),

Gene: LilDestine_93 Start: 59128, Stop: 59541, Start Num: 135

Candidate Starts for LilDestine_93:

(Start: 135 @59128 has 75 MA's), (204, 59239), (220, 59278), (225, 59287), (258, 59365), (295, 59437), (326, 59515), (334, 59533),

Gene: Linus_100 Start: 64039, Stop: 64533, Start Num: 130

Candidate Starts for Linus_100:

(64, 63931), (77, 63970), (Start: 130 @64039 has 15 MA's), (179, 64123), (213, 64195), (229, 64234), (333, 64504),

Gene: Lishka_42 Start: 27718, Stop: 28179, Start Num: 107

Candidate Starts for Lishka_42:

(Start: 107 @27718 has 3 MA's), (258, 27982), (262, 28003), (295, 28066),

Gene: LiyuLake_91 Start: 59329, Stop: 59736, Start Num: 135

Candidate Starts for LiyuLake_91:

(Start: 135 @59329 has 75 MA's), (158, 59350), (204, 59434), (224, 59479), (225, 59482), (258, 59560), (268, 59596), (315, 59683), (326, 59710),

Gene: Loadrie_94 Start: 59619, Stop: 60032, Start Num: 135

Candidate Starts for Loadrie_94:

(Start: 135 @59619 has 75 MA's), (204, 59730), (220, 59769), (225, 59778), (258, 59856), (295, 59928), (326, 60006), (334, 60024),

Gene: LolaVinca_141 Start: 83494, Stop: 83910, Start Num: 127

Candidate Starts for LolaVinca_141:

(15, 83017), (Start: 127 @83494 has 25 MA's), (167, 83551), (198, 83614), (231, 83683), (261, 83728), (276, 83767),

Gene: Lolly9_91 Start: 59420, Stop: 59827, Start Num: 135

Candidate Starts for Lolly9_91:

(Start: 135 @59420 has 75 MA's), (158, 59441), (204, 59525), (224, 59570), (258, 59651), (268, 59687), (315, 59774), (326, 59801),

Gene: Love_20 Start: 14527, Stop: 14973, Start Num: 116

Candidate Starts for Love_20:

(Start: 101 @14506 has 2 MA's), (Start: 109 @14518 has 2 MA's), (Start: 116 @14527 has 160 MA's), (Start: 142 @14557 has 2 MA's), (146, 14566), (233, 14737), (258, 14770), (268, 14812), (282, 14833), (301, 14878), (316, 14914),

Gene: Lton_30 Start: 23640, Stop: 24134, Start Num: 99

Candidate Starts for Lton_30:

(Start: 99 @23640 has 11 MA's), (156, 23715), (160, 23721), (193, 23784), (261, 23916), (278, 23958), (284, 23973),

Gene: Lukilu_131 Start: 83536, Stop: 83952, Start Num: 127

Candidate Starts for Lukilu_131:

(15, 83059), (Start: 127 @83536 has 25 MA's), (167, 83593), (198, 83656), (231, 83725), (261, 83770), (276, 83809),

Gene: Lululemon_219 Start: 112060, Stop: 112500, Start Num: 143

Candidate Starts for Lululemon_219:

(43, 111865), (55, 111901), (78, 111973), (83, 111979), (91, 111988), (Start: 113 @112018 has 1 MA's), (Start: 118 @112024 has 4 MA's), (Start: 121 @112027 has 3 MA's), (Start: 126 @112033 has 2 MA's), (Start: 143 @112060 has 12 MA's), (194, 112156), (217, 112207), (264, 112300), (293, 112372), (315, 112426), (330, 112459),

Gene: Lulwa_10 Start: 8943, Stop: 9377, Start Num: 116

Candidate Starts for Lulwa_10:

(Start: 116 @8943 has 160 MA's), (147, 8982), (164, 9006), (209, 9087), (258, 9177), (282, 9240),

Gene: Lumos_92 Start: 59232, Stop: 59639, Start Num: 135

Candidate Starts for Lumos_92:

(Start: 135 @59232 has 75 MA's), (158, 59253), (224, 59382), (225, 59385), (258, 59463), (268, 59499), (315, 59586), (326, 59613),

Gene: Lymara_98 Start: 62394, Stop: 62876, Start Num: 130

Candidate Starts for Lymara_98:

(37, 62202), (64, 62298), (Start: 130 @62394 has 15 MA's), (209, 62526),

Gene: Lynnae_96 Start: 59229, Stop: 59642, Start Num: 135

Candidate Starts for Lynnae_96:

(Start: 135 @59229 has 75 MA's), (204, 59340), (220, 59379), (225, 59388), (258, 59466), (295, 59538), (326, 59616), (334, 59634),

Gene: MAckerman_89 Start: 56285, Stop: 56695, Start Num: 135

Candidate Starts for MAckerman_89:

(Start: 135 @56285 has 75 MA's), (168, 56315), (170, 56318), (189, 56363), (225, 56441), (248, 56483), (258, 56519), (277, 56561), (280, 56567), (305, 56615), (321, 56660), (334, 56687),

Gene: Maby2021_250 Start: 143650, Stop: 144099, Start Num: 131

Candidate Starts for Maby2021_250:

(Start: 131 @143650 has 35 MA's), (166, 143689), (175, 143707), (192, 143740), (208, 143767), (224, 143800), (259, 143887), (274, 143929), (311, 144028),

Gene: Magic8_10 Start: 8940, Stop: 9374, Start Num: 116

Candidate Starts for Magic8_10:

(Start: 116 @8940 has 160 MA's), (147, 8979), (164, 9003), (209, 9084), (258, 9174), (282, 9237),

Gene: Makar_96 Start: 57907, Stop: 11, Start Num: 124

Candidate Starts for Makar_96:

(59, 57787), (77, 57847), (Start: 124 @57907 has 1 MA's), (150, 57943), (197, 58012), (203, 58027), (211, 58030), (309, 58225),

Gene: Manda_84 Start: 52535, Stop: 52981, Start Num: 111

Candidate Starts for Manda_84:

(92, 52511), (Start: 111 @52535 has 5 MA's), (Start: 151 @52589 has 5 MA's), (229, 52748), (258, 52787), (262, 52808), (312, 52919),

Gene: Mangeria_141 Start: 83337, Stop: 83753, Start Num: 127

Candidate Starts for Mangeria_141:

(15, 82860), (Start: 127 @83337 has 25 MA's), (167, 83394), (198, 83457), (231, 83526), (261, 83571), (276, 83610),

Gene: Marteena_62 Start: 42816, Stop: 43277, Start Num: 99

Candidate Starts for Marteena_62:

(34, 42666), (36, 42669), (58, 42744), (60, 42747), (Start: 99 @42816 has 11 MA's), (108, 42822), (167, 42903), (215, 42999), (268, 43116),

Gene: Matalotodo_10 Start: 8944, Stop: 9378, Start Num: 116

Candidate Starts for Matalotodo_10:

(Start: 116 @8944 has 160 MA's), (147, 8983), (164, 9007), (209, 9088), (258, 9178), (282, 9241),

Gene: Matteo_53 Start: 35852, Stop: 36313, Start Num: 99

Candidate Starts for Matteo_53:

(34, 35702), (58, 35780), (60, 35783), (Start: 99 @35852 has 11 MA's), (108, 35858), (167, 35939), (215, 36035), (268, 36152),

Gene: McCrothy_19 Start: 14432, Stop: 14839, Start Num: 146

Candidate Starts for McCrothy_19:

(Start: 101 @14372 has 2 MA's), (Start: 109 @14384 has 2 MA's), (Start: 116 @14393 has 160 MA's), (Start: 142 @14423 has 2 MA's), (146, 14432), (233, 14603), (258, 14636), (268, 14678), (282, 14699), (301, 14744), (316, 14780),

Gene: McGee_251 Start: 142298, Stop: 142747, Start Num: 131

Candidate Starts for McGee_251:

(Start: 131 @142298 has 35 MA's), (166, 142337), (175, 142355), (192, 142388), (208, 142415), (224, 142448), (259, 142535), (274, 142577), (311, 142676),

Gene: Megatron_10 Start: 8940, Stop: 9374, Start Num: 116

Candidate Starts for Megatron_10:

(Start: 116 @8940 has 160 MA's), (147, 8979), (164, 9003), (209, 9084), (258, 9174), (282, 9237),

Gene: Melc17_10 Start: 8940, Stop: 9374, Start Num: 116

Candidate Starts for Melc17_10:
(Start: 116 @8940 has 160 MA's), (147, 8979), (164, 9003), (209, 9084), (258, 9174), (282, 9237),

Gene: Mesh1_10 Start: 8943, Stop: 9377, Start Num: 116
Candidate Starts for Mesh1_10:
(Start: 116 @8943 has 160 MA's), (147, 8982), (164, 9006), (209, 9087), (258, 9177), (282, 9240),

Gene: MikeLiesIn_142 Start: 83297, Stop: 83713, Start Num: 127
Candidate Starts for MikeLiesIn_142:
(15, 82820), (Start: 127 @83297 has 25 MA's), (167, 83354), (198, 83417), (231, 83486), (261, 83531),
(276, 83570),

Gene: Mikota_10 Start: 8941, Stop: 9375, Start Num: 116
Candidate Starts for Mikota_10:
(Start: 116 @8941 has 160 MA's), (147, 8980), (164, 9004), (209, 9085), (258, 9175), (282, 9238),

Gene: Mildred21_232 Start: 111445, Stop: 111885, Start Num: 143
Candidate Starts for Mildred21_232:
(Start: 126 @111418 has 2 MA's), (Start: 143 @111445 has 12 MA's), (217, 111592), (264, 111685),
(293, 111757), (315, 111811), (330, 111844),

Gene: Miley16_95 Start: 59815, Stop: 60228, Start Num: 135
Candidate Starts for Miley16_95:
(Start: 135 @59815 has 75 MA's), (204, 59926), (224, 59971), (225, 59974), (263, 60070), (295,
60124), (326, 60202), (334, 60220),

Gene: MiniBoss_10 Start: 8943, Stop: 9377, Start Num: 116
Candidate Starts for MiniBoss_10:
(Start: 116 @8943 has 160 MA's), (147, 8982), (164, 9006), (209, 9087), (258, 9177), (282, 9240),

Gene: MiniLon_96 Start: 59421, Stop: 59828, Start Num: 135
Candidate Starts for MiniLon_96:
(Start: 135 @59421 has 75 MA's), (158, 59442), (204, 59526), (224, 59571), (258, 59652), (268,
59688), (315, 59775), (326, 59802),

Gene: MiniMac_96 Start: 59416, Stop: 59823, Start Num: 135
Candidate Starts for MiniMac_96:
(Start: 135 @59416 has 75 MA's), (158, 59437), (204, 59521), (224, 59566), (258, 59647), (268,
59683), (315, 59770), (326, 59797),

Gene: MkaliMitinis3_97 Start: 59582, Stop: 59995, Start Num: 135
Candidate Starts for MkaliMitinis3_97:
(Start: 135 @59582 has 75 MA's), (204, 59693), (220, 59732), (225, 59741), (258, 59819), (295,
59891), (326, 59969), (334, 59987),

Gene: Moby_134 Start: 80939, Stop: 81355, Start Num: 127
Candidate Starts for Moby_134:
(15, 80462), (Start: 127 @80939 has 25 MA's), (167, 80996), (198, 81059), (231, 81128), (261, 81173),
(276, 81212),

Gene: Moiqah_133 Start: 80916, Stop: 81332, Start Num: 127
Candidate Starts for Moiqah_133:

(15, 80439), (Start: 127 @80916 has 25 MA's), (167, 80973), (198, 81036), (231, 81105), (261, 81150), (276, 81189),

Gene: Mojorita_45 Start: 30760, Stop: 31281, Start Num: 98

Candidate Starts for Mojorita_45:

(Start: 98 @30760 has 4 MA's), (268, 31048), (293, 31099), (307, 31132), (310, 31138), (317, 31168),

Gene: Moostard_89 Start: 59339, Stop: 59746, Start Num: 135

Candidate Starts for Moostard_89:

(Start: 135 @59339 has 75 MA's), (158, 59360), (224, 59489), (225, 59492), (258, 59570), (268, 59606), (315, 59693), (326, 59720),

Gene: Mordred_100 Start: 63630, Stop: 64124, Start Num: 130

Candidate Starts for Mordred_100:

(64, 63522), (77, 63561), (Start: 130 @63630 has 15 MA's), (179, 63714), (213, 63786), (229, 63825), (333, 64095),

Gene: Morizzled23_247 Start: 141326, Stop: 141775, Start Num: 131

Candidate Starts for Morizzled23_247:

(Start: 131 @141326 has 35 MA's), (166, 141365), (175, 141383), (192, 141416), (208, 141443), (224, 141476), (259, 141563), (274, 141605), (311, 141704),

Gene: Morty_10 Start: 8940, Stop: 9374, Start Num: 116

Candidate Starts for Morty_10:

(Start: 116 @8940 has 160 MA's), (147, 8979), (164, 9003), (209, 9084), (258, 9174), (282, 9237),

Gene: MortyNRick_64 Start: 42082, Stop: 42537, Start Num: 75

Candidate Starts for MortyNRick_64:

(Start: 75 @42082 has 1 MA's), (Start: 93 @42106 has 1 MA's), (180, 42211), (218, 42283), (316, 42475),

Gene: MsGreen_92 Start: 59234, Stop: 59641, Start Num: 135

Candidate Starts for MsGreen_92:

(Start: 135 @59234 has 75 MA's), (158, 59255), (224, 59384), (225, 59387), (258, 59465), (268, 59501), (315, 59588), (326, 59615),

Gene: Murdoc_10 Start: 8943, Stop: 9377, Start Num: 116

Candidate Starts for Murdoc_10:

(Start: 116 @8943 has 160 MA's), (147, 8982), (164, 9006), (209, 9087), (258, 9177), (282, 9240),

Gene: Music_78 Start: 47190, Stop: 47681, Start Num: 127

Candidate Starts for Music_78:

(Start: 127 @47190 has 25 MA's),

Gene: Nacho_0010 Start: 8943, Stop: 9377, Start Num: 116

Candidate Starts for Nacho_0010:

(Start: 116 @8943 has 160 MA's), (147, 8982), (164, 9006), (209, 9087), (258, 9177), (282, 9240),

Gene: Nathan_10 Start: 8941, Stop: 9375, Start Num: 116

Candidate Starts for Nathan_10:

(Start: 116 @8941 has 160 MA's), (147, 8980), (164, 9004), (209, 9085), (258, 9175), (282, 9238),

Gene: Nebkiss_18 Start: 16946, Stop: 17431, Start Num: 115

Candidate Starts for Nebkiss_18:

(Start: 115 @16946 has 2 MA's), (123, 16955), (233, 17171), (261, 17210), (263, 17219), (287, 17270), (332, 17369),

Gene: Neobush_64 Start: 42273, Stop: 42734, Start Num: 99

Candidate Starts for Neobush_64:

(62, 42207), (Start: 99 @42273 has 11 MA's), (196, 42420), (213, 42456), (224, 42483), (258, 42531), (268, 42573), (274, 42582), (299, 42642),

Gene: Netyap_94 Start: 59453, Stop: 59866, Start Num: 135

Candidate Starts for Netyap_94:

(Start: 135 @59453 has 75 MA's), (204, 59564), (224, 59609), (225, 59612), (263, 59708), (295, 59762), (326, 59840), (334, 59858),

Gene: Newman_10 Start: 8943, Stop: 9377, Start Num: 116

Candidate Starts for Newman_10:

(Start: 116 @8943 has 160 MA's), (147, 8982), (164, 9006), (209, 9087), (258, 9177), (282, 9240),

Gene: Nicholas_90 Start: 59344, Stop: 59751, Start Num: 135

Candidate Starts for Nicholas_90:

(Start: 135 @59344 has 75 MA's), (158, 59365), (224, 59494), (225, 59497), (258, 59575), (268, 59611), (315, 59698), (326, 59725),

Gene: Nicholasp3_95 Start: 59299, Stop: 59712, Start Num: 135

Candidate Starts for Nicholasp3_95:

(Start: 135 @59299 has 75 MA's), (204, 59410), (220, 59449), (225, 59458), (258, 59536), (295, 59608), (326, 59686), (334, 59704),

Gene: Nicole21_10 Start: 8941, Stop: 9375, Start Num: 116

Candidate Starts for Nicole21_10:

(Start: 116 @8941 has 160 MA's), (147, 8980), (164, 9004), (209, 9085), (258, 9175), (282, 9238),

Gene: Nordenberg_13 Start: 12847, Stop: 13293, Start Num: 116

Candidate Starts for Nordenberg_13:

(Start: 101 @12826 has 2 MA's), (Start: 109 @12838 has 2 MA's), (Start: 116 @12847 has 160 MA's), (Start: 142 @12877 has 2 MA's), (146, 12886), (233, 13057), (258, 13090), (268, 13132), (282, 13153), (301, 13198), (316, 13234),

Gene: Numberten_10 Start: 8943, Stop: 9377, Start Num: 116

Candidate Starts for Numberten_10:

(Start: 116 @8943 has 160 MA's), (147, 8982), (164, 9006), (209, 9087), (258, 9177), (282, 9240),

Gene: OSmaximus_10 Start: 8941, Stop: 9375, Start Num: 116

Candidate Starts for OSmaximus_10:

(Start: 116 @8941 has 160 MA's), (147, 8980), (164, 9004), (209, 9085), (258, 9175), (282, 9238),

Gene: OhShagHennessy_87 Start: 56542, Stop: 56952, Start Num: 135

Candidate Starts for OhShagHennessy_87:

(Start: 135 @56542 has 75 MA's), (168, 56572), (170, 56575), (189, 56620), (225, 56698), (248, 56740), (258, 56776), (277, 56818), (280, 56824), (305, 56872), (321, 56917), (334, 56944),

Gene: Olive_10 Start: 8940, Stop: 9374, Start Num: 116

Candidate Starts for Olive_10:

(Start: 116 @8940 has 160 MA's), (147, 8979), (164, 9003), (209, 9084), (258, 9174), (282, 9237),

Gene: OliverWalter_10 Start: 8939, Stop: 9373, Start Num: 116

Candidate Starts for OliverWalter_10:

(Start: 116 @8939 has 160 MA's), (147, 8978), (164, 9002), (209, 9083), (258, 9173), (282, 9236),

Gene: Omniscient_10 Start: 8943, Stop: 9377, Start Num: 116

Candidate Starts for Omniscient_10:

(Start: 116 @8943 has 160 MA's), (147, 8982), (164, 9006), (209, 9087), (258, 9177), (282, 9240),

Gene: Oosterbaan_10 Start: 8944, Stop: 9378, Start Num: 116

Candidate Starts for Oosterbaan_10:

(Start: 116 @8944 has 160 MA's), (147, 8983), (164, 9007), (209, 9088), (258, 9178), (282, 9241),

Gene: OrediggerDelux_245 Start: 143615, Stop: 144064, Start Num: 131

Candidate Starts for OrediggerDelux_245:

(Start: 131 @143615 has 35 MA's), (166, 143654), (175, 143672), (192, 143705), (208, 143732), (224, 143765), (259, 143852), (274, 143894), (311, 143993),

Gene: Orion_10 Start: 8941, Stop: 9375, Start Num: 116

Candidate Starts for Orion_10:

(Start: 116 @8941 has 160 MA's), (147, 8980), (164, 9004), (209, 9085), (258, 9175), (282, 9238),

Gene: OverPar_97 Start: 59619, Stop: 60032, Start Num: 135

Candidate Starts for OverPar_97:

(Start: 135 @59619 has 75 MA's), (204, 59730), (220, 59769), (225, 59778), (258, 59856), (295, 59928), (326, 60006), (334, 60024),

Gene: PG1_10 Start: 8941, Stop: 9375, Start Num: 116

Candidate Starts for PG1_10:

(Start: 116 @8941 has 160 MA's), (147, 8980), (164, 9004), (209, 9085), (258, 9175), (282, 9238),

Gene: PYPDinur_96 Start: 59772, Stop: 60179, Start Num: 135

Candidate Starts for PYPDinur_96:

(Start: 135 @59772 has 75 MA's), (158, 59793), (225, 59925), (263, 60021), (295, 60075), (315, 60126), (326, 60153), (327, 60156), (334, 60171),

Gene: PacManQ_219 Start: 112060, Stop: 112500, Start Num: 143

Candidate Starts for PacManQ_219:

(43, 111865), (55, 111901), (78, 111973), (83, 111979), (91, 111988), (Start: 113 @112018 has 1 MA's), (Start: 118 @112024 has 4 MA's), (Start: 121 @112027 has 3 MA's), (Start: 126 @112033 has 2 MA's), (Start: 143 @112060 has 12 MA's), (194, 112156), (217, 112207), (264, 112300), (293, 112372), (315, 112426), (330, 112459),

Gene: PapayaSalad_44 Start: 30268, Stop: 30774, Start Num: 76

Candidate Starts for PapayaSalad_44:

(Start: 76 @30268 has 2 MA's), (Start: 107 @30304 has 3 MA's), (263, 30562), (268, 30580), (281, 30601),

Gene: Paries_19 Start: 14215, Stop: 14661, Start Num: 116

Candidate Starts for Paries_19:

(Start: 101 @14194 has 2 MA's), (Start: 109 @14206 has 2 MA's), (Start: 116 @14215 has 160 MA's), (Start: 142 @14245 has 2 MA's), (146, 14254), (233, 14425), (258, 14458), (268, 14500), (282, 14521),

(301, 14566), (316, 14602),

Gene: Persimmon_162 Start: 90873, Stop: 91259, Start Num: 159

Candidate Starts for Persimmon_162:

(Start: 134 @90837 has 1 MA's), (Start: 137 @90843 has 1 MA's), (Start: 159 @90873 has 2 MA's), (196, 90942), (233, 91029), (270, 91095),

Gene: Phamished_10 Start: 8940, Stop: 9374, Start Num: 116

Candidate Starts for Phamished_10:

(Start: 116 @8940 has 160 MA's), (147, 8979), (164, 9003), (209, 9084), (258, 9174), (282, 9237),

Gene: PharkleMinkus_252 Start: 141563, Stop: 142012, Start Num: 131

Candidate Starts for PharkleMinkus_252:

(Start: 131 @141563 has 35 MA's), (166, 141602), (175, 141620), (192, 141653), (208, 141680), (224, 141713), (259, 141800), (274, 141842), (311, 141941),

Gene: PhatCats2014_10 Start: 8944, Stop: 9378, Start Num: 116

Candidate Starts for PhatCats2014_10:

(Start: 116 @8944 has 160 MA's), (147, 8983), (164, 9007), (209, 9088), (258, 9178), (282, 9241),

Gene: PhatLouie_10 Start: 8943, Stop: 9377, Start Num: 116

Candidate Starts for PhatLouie_10:

(Start: 116 @8943 has 160 MA's), (147, 8982), (164, 9006), (209, 9087), (258, 9177), (282, 9240),

Gene: Pherdinand_10 Start: 8941, Stop: 9375, Start Num: 116

Candidate Starts for Pherdinand_10:

(Start: 116 @8941 has 160 MA's), (147, 8980), (164, 9004), (209, 9085), (258, 9175), (282, 9238),

Gene: Phipps_10 Start: 8943, Stop: 9377, Start Num: 116

Candidate Starts for Phipps_10:

(Start: 116 @8943 has 160 MA's), (147, 8982), (164, 9006), (209, 9087), (258, 9177), (282, 9240),

Gene: Phistory_56 Start: 36066, Stop: 36515, Start Num: 118

Candidate Starts for Phistory_56:

(Start: 66 @35985 has 1 MA's), (Start: 118 @36066 has 4 MA's), (167, 36138), (219, 36234), (233, 36270), (297, 36399), (300, 36405), (336, 36504),

Gene: PhorbesPhlower_38 Start: 28562, Stop: 29011, Start Num: 118

Candidate Starts for PhorbesPhlower_38:

(Start: 66 @28481 has 1 MA's), (Start: 118 @28562 has 4 MA's), (219, 28730), (233, 28766), (297, 28895), (336, 29000),

Gene: Phox_138 Start: 83560, Stop: 83976, Start Num: 127

Candidate Starts for Phox_138:

(15, 83083), (Start: 127 @83560 has 25 MA's), (167, 83617), (198, 83680), (231, 83749), (261, 83794), (276, 83833),

Gene: PhrodoBaggins_105 Start: 8943, Stop: 9377, Start Num: 116

Candidate Starts for PhrodoBaggins_105:

(Start: 116 @8943 has 160 MA's), (147, 8982), (164, 9006), (209, 9087), (258, 9177), (282, 9240),

Gene: Phunky_10 Start: 8943, Stop: 9377, Start Num: 116

Candidate Starts for Phunky_10:

(Start: 116 @8943 has 160 MA's), (147, 8982), (164, 9006), (209, 9087), (258, 9177), (282, 9240),

Gene: Picard_45 Start: 30958, Stop: 31479, Start Num: 98

Candidate Starts for Picard_45:

(Start: 98 @30958 has 4 MA's), (268, 31246), (310, 31336), (317, 31366), (341, 31432),

Gene: Piccadilly_44 Start: 30160, Stop: 30651, Start Num: 84

Candidate Starts for Piccadilly_44:

(Start: 84 @30160 has 12 MA's), (258, 30412), (261, 30427),

Gene: Pio_145 Start: 85169, Stop: 85585, Start Num: 127

Candidate Starts for Pio_145:

(15, 84692), (Start: 127 @85169 has 25 MA's), (167, 85226), (198, 85289), (231, 85358), (261, 85403), (276, 85442),

Gene: Pipefish_29 Start: 27509, Stop: 27015, Start Num: 94

Candidate Starts for Pipefish_29:

(Start: 94 @27509 has 1 MA's), (206, 27344), (218, 27311), (240, 27260),

Gene: Pipsqueak_10 Start: 8943, Stop: 9377, Start Num: 116

Candidate Starts for Pipsqueak_10:

(Start: 116 @8943 has 160 MA's), (147, 8982), (164, 9006), (209, 9087), (258, 9177), (282, 9240),

Gene: Plmatters_10 Start: 8943, Stop: 9377, Start Num: 116

Candidate Starts for Plmatters_10:

(Start: 116 @8943 has 160 MA's), (147, 8982), (164, 9006), (209, 9087), (258, 9177), (282, 9240),

Gene: Podrick_10 Start: 8943, Stop: 9377, Start Num: 116

Candidate Starts for Podrick_10:

(Start: 116 @8943 has 160 MA's), (147, 8982), (164, 9006), (209, 9087), (258, 9177), (282, 9240),

Gene: Pollux_66 Start: 44701, Stop: 45162, Start Num: 99

Candidate Starts for Pollux_66:

(34, 44551), (36, 44554), (58, 44629), (60, 44632), (Start: 99 @44701 has 11 MA's), (108, 44707), (167, 44788), (215, 44884), (268, 45001),

Gene: Poochiewood_89 Start: 57939, Stop: 58349, Start Num: 135

Candidate Starts for Poochiewood_89:

(Start: 135 @57939 has 75 MA's), (168, 57969), (170, 57972), (189, 58017), (225, 58095), (248, 58137), (258, 58173), (277, 58215), (280, 58221), (305, 58269), (321, 58314), (334, 58341),

Gene: Pops_10 Start: 8943, Stop: 9377, Start Num: 116

Candidate Starts for Pops_10:

(Start: 116 @8943 has 160 MA's), (147, 8982), (164, 9006), (209, 9087), (258, 9177), (282, 9240),

Gene: PowerRanger_27 Start: 22001, Stop: 22438, Start Num: 128

Candidate Starts for PowerRanger_27:

(Start: 90 @21953 has 1 MA's), (Start: 128 @22001 has 1 MA's), (224, 22172), (225, 22175), (246, 22214),

Gene: Prickles_10 Start: 8949, Stop: 9383, Start Num: 116

Candidate Starts for Prickles_10:

(Start: 116 @8949 has 160 MA's), (147, 8988), (164, 9012), (209, 9093), (258, 9183), (282, 9246),

Gene: Primadonna_244 Start: 142325, Stop: 142774, Start Num: 131

Candidate Starts for Primadonna_244:

(Start: 131 @142325 has 35 MA's), (166, 142364), (175, 142382), (192, 142415), (208, 142442), (224, 142475), (259, 142562), (274, 142604), (311, 142703),

Gene: PrincessTrina_101 Start: 63821, Stop: 64315, Start Num: 130

Candidate Starts for PrincessTrina_101:

(64, 63713), (77, 63752), (Start: 130 @63821 has 15 MA's), (179, 63905), (213, 63977), (229, 64016), (333, 64286),

Gene: ProfessorX_10 Start: 8941, Stop: 9375, Start Num: 116

Candidate Starts for ProfessorX_10:

(Start: 116 @8941 has 160 MA's), (147, 8980), (164, 9004), (209, 9085), (258, 9175), (282, 9238),

Gene: Puhltonio_10 Start: 8943, Stop: 9377, Start Num: 116

Candidate Starts for Puhltonio_10:

(Start: 116 @8943 has 160 MA's), (147, 8982), (164, 9006), (209, 9087), (258, 9177), (282, 9240),

Gene: PurduePete_250 Start: 143690, Stop: 144139, Start Num: 131

Candidate Starts for PurduePete_250:

(Start: 131 @143690 has 35 MA's), (166, 143729), (175, 143747), (192, 143780), (208, 143807), (224, 143840), (259, 143927), (274, 143969), (311, 144068),

Gene: Quby_96 Start: 59183, Stop: 59590, Start Num: 135

Candidate Starts for Quby_96:

(Start: 135 @59183 has 75 MA's), (225, 59336), (263, 59432), (295, 59486), (315, 59537), (326, 59564), (327, 59567), (334, 59582),

Gene: QueenBeane_10 Start: 8940, Stop: 9374, Start Num: 116

Candidate Starts for QueenBeane_10:

(Start: 116 @8940 has 160 MA's), (147, 8979), (164, 9003), (209, 9084), (258, 9174), (282, 9237),

Gene: Quisquilliae_10 Start: 8943, Stop: 9377, Start Num: 116

Candidate Starts for Quisquilliae_10:

(Start: 116 @8943 has 160 MA's), (147, 8982), (164, 9006), (209, 9087), (258, 9177), (282, 9240),

Gene: REQ3_10 Start: 4829, Stop: 5143, Start Num: 191

Candidate Starts for REQ3_10:

(Start: 118 @4724 has 4 MA's), (Start: 126 @4733 has 2 MA's), (191, 4829), (200, 4835), (229, 4904), (233, 4919),

Gene: Rabinovish_140 Start: 83892, Stop: 84308, Start Num: 127

Candidate Starts for Rabinovish_140:

(15, 83415), (Start: 127 @83892 has 25 MA's), (167, 83949), (198, 84012), (231, 84081), (261, 84126), (276, 84165),

Gene: Raleigh_43 Start: 33449, Stop: 33964, Start Num: 96

Candidate Starts for Raleigh_43:

(Start: 96 @33449 has 3 MA's), (129, 33488), (267, 33728), (268, 33734),

Gene: Rearden_102 Start: 60176, Stop: 60565, Start Num: 192

Candidate Starts for Rearden_102:

(35, 59861), (41, 59885), (72, 59990), (91, 60023), (106, 60041), (153, 60098), (Start: 184 @60161 has 1 MA's), (192, 60176), (201, 60194), (224, 60251), (227, 60257), (254, 60317), (286, 60410), (337, 60551),

Gene: Red305_93 Start: 59235, Stop: 59642, Start Num: 135

Candidate Starts for Red305_93:

(Start: 135 @59235 has 75 MA's), (158, 59256), (224, 59385), (225, 59388), (258, 59466), (268, 59502), (315, 59589), (326, 59616),

Gene: RedRaider89_11 Start: 9175, Stop: 9609, Start Num: 116

Candidate Starts for RedRaider89_11:

(Start: 116 @9175 has 160 MA's), (147, 9214), (164, 9238), (209, 9319), (258, 9409), (282, 9472),

Gene: RedWattleHog_27 Start: 28545, Stop: 28156, Start Num: 173

Candidate Starts for RedWattleHog_27:

(91, 28650), (Start: 173 @28545 has 1 MA's), (225, 28443), (267, 28326), (325, 28179),

Gene: Riggan_10 Start: 8947, Stop: 9381, Start Num: 116

Candidate Starts for Riggan_10:

(Start: 116 @8947 has 160 MA's), (147, 8986), (164, 9010), (209, 9091), (258, 9181), (282, 9244),

Gene: Rofo_18 Start: 14497, Stop: 14928, Start Num: 142

Candidate Starts for Rofo_18:

(Start: 101 @14446 has 2 MA's), (Start: 109 @14458 has 2 MA's), (Start: 116 @14467 has 160 MA's), (Start: 142 @14497 has 2 MA's), (146, 14506), (233, 14677), (258, 14710), (268, 14752), (282, 14773), (301, 14818), (316, 14854),

Gene: Roliet_10 Start: 8943, Stop: 9377, Start Num: 116

Candidate Starts for Roliet_10:

(Start: 116 @8943 has 160 MA's), (147, 8982), (164, 9006), (209, 9087), (258, 9177), (282, 9240),

Gene: RomansRevenge_75 Start: 50908, Stop: 50471, Start Num: 157

Candidate Starts for RomansRevenge_75:

(97, 50992), (103, 50983), (Start: 157 @50908 has 1 MA's), (230, 50743), (251, 50698), (289, 50596), (296, 50578), (304, 50560),

Gene: Roscoe_11 Start: 9178, Stop: 9612, Start Num: 116

Candidate Starts for Roscoe_11:

(Start: 116 @9178 has 160 MA's), (147, 9217), (164, 9241), (209, 9322), (258, 9412), (282, 9475),

Gene: Rose5_92 Start: 57809, Stop: 58219, Start Num: 135

Candidate Starts for Rose5_92:

(Start: 135 @57809 has 75 MA's), (168, 57839), (170, 57842), (189, 57887), (225, 57965), (248, 58007), (258, 58043), (277, 58085), (280, 58091), (305, 58139), (321, 58184), (334, 58211),

Gene: RosiePosie_100 Start: 63686, Stop: 64180, Start Num: 130

Candidate Starts for RosiePosie_100:

(64, 63578), (77, 63617), (Start: 130 @63686 has 15 MA's), (179, 63770), (213, 63842), (219, 63860), (229, 63881),

Gene: Rossetti_95 Start: 59618, Stop: 60031, Start Num: 135

Candidate Starts for Rossetti_95:

(Start: 135 @59618 has 75 MA's), (204, 59729), (220, 59768), (225, 59777), (258, 59855), (295, 59927), (326, 60005), (334, 60023),

Gene: Rumpelstiltskin_91 Start: 59092, Stop: 59505, Start Num: 135

Candidate Starts for Rumpelstiltskin_91:

(Start: 135 @59092 has 75 MA's), (204, 59203), (220, 59242), (225, 59251), (258, 59329), (295, 59401), (326, 59479), (334, 59497),

Gene: SDcharge11_10 Start: 8936, Stop: 9370, Start Num: 116

Candidate Starts for SDcharge11_10:

(Start: 116 @8936 has 160 MA's), (147, 8975), (164, 8999), (209, 9080), (258, 9170), (282, 9233),

Gene: SV1_42 Start: 29657, Stop: 30169, Start Num: 99

Candidate Starts for SV1_42:

(Start: 99 @29657 has 11 MA's), (241, 29882), (291, 29981), (307, 30020), (310, 30026), (317, 30056),

Gene: SVoro_139 Start: 83654, Stop: 84070, Start Num: 127

Candidate Starts for SVoro_139:

(15, 83177), (Start: 127 @83654 has 25 MA's), (167, 83711), (198, 83774), (231, 83843), (261, 83888), (276, 83927),

Gene: SadLad_28 Start: 14537, Stop: 14064, Start Num: 133

Candidate Starts for SadLad_28:

(1, 15395), (2, 15374), (3, 15371), (4, 15356), (5, 15353), (6, 15335), (7, 15299), (8, 15278), (9, 15239), (10, 15185), (11, 15182), (12, 15173), (13, 15155), (14, 15065), (17, 15011), (19, 14957), (20, 14912), (21, 14870), (22, 14864), (24, 14822), (26, 14816), (28, 14798), (29, 14792), (31, 14780), (34, 14759), (35, 14756), (45, 14705), (47, 14693), (54, 14681), (61, 14660), (Start: 74 @14621 has 2 MA's), (112, 14564), (Start: 133 @14537 has 2 MA's), (206, 14405), (213, 14387), (242, 14321), (258, 14282), (263, 14258), (266, 14249), (300, 14168),

Gene: Salacia_251 Start: 144116, Stop: 144565, Start Num: 131

Candidate Starts for Salacia_251:

(Start: 131 @144116 has 35 MA's), (166, 144155), (175, 144173), (192, 144206), (208, 144233), (224, 144266), (259, 144353), (274, 144395), (311, 144494),

Gene: Samaymay_10 Start: 8940, Stop: 9374, Start Num: 116

Candidate Starts for Samaymay_10:

(Start: 116 @8940 has 160 MA's), (147, 8979), (164, 9003), (209, 9084), (258, 9174), (282, 9237),

Gene: Samty_91 Start: 59332, Stop: 59739, Start Num: 135

Candidate Starts for Samty_91:

(Start: 135 @59332 has 75 MA's), (158, 59353), (224, 59482), (225, 59485), (258, 59563), (268, 59599), (315, 59686), (326, 59713),

Gene: Samy_46 Start: 31456, Stop: 31815, Start Num: 185

Candidate Starts for Samy_46:

(Start: 185 @31456 has 1 MA's), (203, 31495), (213, 31516), (217, 31528), (229, 31555), (258, 31591), (261, 31606), (270, 31636),

Gene: Sarshaun_96 Start: 60210, Stop: 60623, Start Num: 135

Candidate Starts for Sarshaun_96:

(Start: 135 @60210 has 75 MA's), (204, 60321), (220, 60360), (225, 60369), (258, 60447), (295, 60519), (326, 60597), (334, 60615),

Gene: Scavito_101 Start: 63679, Stop: 64173, Start Num: 130

Candidate Starts for Scavito_101:

(64, 63571), (77, 63610), (Start: 130 @63679 has 15 MA's), (179, 63763), (213, 63835), (229, 63874), (333, 64144),

Gene: Schlegelian_45 Start: 30710, Stop: 31201, Start Num: 84

Candidate Starts for Schlegelian_45:

(Start: 84 @30710 has 12 MA's), (258, 30962), (261, 30977),

Gene: ScoobyDoobyDoo_251 Start: 151338, Stop: 151754, Start Num: 128

Candidate Starts for ScoobyDoobyDoo_251:

(71, 151257), (Start: 128 @151338 has 1 MA's), (Start: 149 @151356 has 1 MA's), (177, 151383), (187, 151401), (206, 151422), (218, 151452), (239, 151500), (250, 151515), (267, 151581), (305, 151668),

Gene: Scoot17C_10 Start: 8944, Stop: 9378, Start Num: 116

Candidate Starts for Scoot17C_10:

(Start: 116 @8944 has 160 MA's), (147, 8983), (164, 9007), (209, 9088), (258, 9178), (282, 9241),

Gene: Serendipity_10 Start: 8943, Stop: 9377, Start Num: 116

Candidate Starts for Serendipity_10:

(Start: 116 @8943 has 160 MA's), (147, 8982), (164, 9006), (209, 9087), (258, 9177), (282, 9240),

Gene: Serpentine_0010 Start: 8943, Stop: 9377, Start Num: 116

Candidate Starts for Serpentine_0010:

(Start: 116 @8943 has 160 MA's), (147, 8982), (164, 9006), (209, 9087), (258, 9177), (282, 9240),

Gene: Shaqnato_134 Start: 81274, Stop: 81690, Start Num: 127

Candidate Starts for Shaqnato_134:

(15, 80797), (Start: 127 @81274 has 25 MA's), (167, 81331), (198, 81394), (231, 81463), (261, 81508), (276, 81547),

Gene: Sheila_10 Start: 8941, Stop: 9375, Start Num: 116

Candidate Starts for Sheila_10:

(Start: 116 @8941 has 160 MA's), (147, 8980), (164, 9004), (209, 9085), (258, 9175), (282, 9238),

Gene: Shelob_143 Start: 84076, Stop: 84492, Start Num: 127

Candidate Starts for Shelob_143:

(15, 83599), (Start: 127 @84076 has 25 MA's), (167, 84133), (198, 84196), (231, 84265), (261, 84310), (276, 84349),

Gene: Sheng711_97 Start: 59248, Stop: 59655, Start Num: 135

Candidate Starts for Sheng711_97:

(Start: 135 @59248 has 75 MA's), (158, 59269), (225, 59401), (263, 59497), (295, 59551), (315, 59602), (326, 59629), (327, 59632), (334, 59647),

Gene: ShiVal_10 Start: 8943, Stop: 9377, Start Num: 116

Candidate Starts for ShiVal_10:

(Start: 116 @8943 has 160 MA's), (147, 8982), (164, 9006), (209, 9087), (258, 9177), (282, 9240),

Gene: Shifa_130 Start: 81500, Stop: 81916, Start Num: 127

Candidate Starts for Shifa_130:

(15, 81023), (Start: 127 @81500 has 25 MA's), (167, 81557), (198, 81620), (231, 81689), (261, 81734), (276, 81773),

Gene: Shrimp_252 Start: 143727, Stop: 144176, Start Num: 131

Candidate Starts for Shrimp_252:

(Start: 131 @143727 has 35 MA's), (166, 143766), (175, 143784), (192, 143817), (208, 143844), (224, 143877), (259, 143964), (274, 144006), (311, 144105),

Gene: Shuckle_221 Start: 113504, Stop: 113944, Start Num: 143

Candidate Starts for Shuckle_221:

(43, 113309), (55, 113345), (78, 113417), (83, 113423), (91, 113432), (Start: 113 @113462 has 1 MA's), (Start: 118 @113468 has 4 MA's), (Start: 121 @113471 has 3 MA's), (Start: 126 @113477 has 2 MA's), (Start: 143 @113504 has 12 MA's), (194, 113600), (217, 113651), (264, 113744), (293, 113816), (315, 113870), (330, 113903),

Gene: Sigman_10 Start: 8940, Stop: 9374, Start Num: 116

Candidate Starts for Sigman_10:

(Start: 116 @8940 has 160 MA's), (147, 8979), (164, 9003), (209, 9084), (258, 9174), (282, 9237),

Gene: SilverChicken_59 Start: 36550, Stop: 36966, Start Num: 182

Candidate Starts for SilverChicken_59:

(86, 36415), (89, 36418), (162, 36508), (182, 36550), (214, 36610), (239, 36676), (257, 36718), (270, 36766),

Gene: Silverleaf_90 Start: 57305, Stop: 57715, Start Num: 135

Candidate Starts for Silverleaf_90:

(Start: 135 @57305 has 75 MA's), (168, 57335), (170, 57338), (189, 57383), (225, 57461), (248, 57503), (258, 57539), (277, 57581), (280, 57587), (305, 57635), (321, 57680), (334, 57707),

Gene: Sitar_20 Start: 15655, Stop: 16110, Start Num: 109

Candidate Starts for Sitar_20:

(Start: 101 @15643 has 2 MA's), (Start: 109 @15655 has 2 MA's), (Start: 116 @15664 has 160 MA's), (Start: 142 @15694 has 2 MA's), (146, 15703), (233, 15874), (258, 15907), (268, 15949), (282, 15970), (301, 16015), (316, 16051),

Gene: Skippy_10 Start: 8943, Stop: 9377, Start Num: 116

Candidate Starts for Skippy_10:

(Start: 116 @8943 has 160 MA's), (147, 8982), (164, 9006), (209, 9087), (258, 9177), (282, 9240),

Gene: Slatt_10 Start: 8945, Stop: 9379, Start Num: 116

Candidate Starts for Slatt_10:

(Start: 116 @8945 has 160 MA's), (147, 8984), (164, 9008), (209, 9089), (258, 9179), (282, 9242),

Gene: Snenia_91 Start: 59236, Stop: 59643, Start Num: 135

Candidate Starts for Snenia_91:

(Start: 135 @59236 has 75 MA's), (158, 59257), (224, 59386), (225, 59389), (258, 59467), (268, 59503), (315, 59590), (326, 59617),

Gene: SoJo_43 Start: 31466, Stop: 31978, Start Num: 98

Candidate Starts for SoJo_43:

(Start: 98 @31466 has 4 MA's), (139, 31523), (293, 31799), (317, 31868),

Gene: SoJulia_97 Start: 60975, Stop: 61388, Start Num: 135

Candidate Starts for SoJulia_97:

(Start: 135 @60975 has 75 MA's), (204, 61086), (220, 61125), (225, 61134), (258, 61212), (295, 61284), (326, 61362), (334, 61380),

Gene: Soap141_95 Start: 60210, Stop: 60623, Start Num: 135

Candidate Starts for Soap141_95:

(Start: 135 @60210 has 75 MA's), (204, 60321), (220, 60360), (225, 60369), (258, 60447), (295, 60519), (326, 60597), (334, 60615),

Gene: SophKB_98 Start: 59438, Stop: 59899, Start Num: 111

Candidate Starts for SophKB_98:

(Start: 111 @59438 has 5 MA's), (140, 59474), (205, 59594), (229, 59651), (258, 59690), (259, 59696),

Gene: Soto_10 Start: 8940, Stop: 9374, Start Num: 116

Candidate Starts for Soto_10:

(Start: 116 @8940 has 160 MA's), (147, 8979), (164, 9003), (209, 9084), (258, 9174), (282, 9237),

Gene: Spartan300_10 Start: 8940, Stop: 9374, Start Num: 116

Candidate Starts for Spartan300_10:

(Start: 116 @8940 has 160 MA's), (147, 8979), (164, 9003), (209, 9084), (258, 9174), (282, 9237),

Gene: Specks_254 Start: 143067, Stop: 143516, Start Num: 131

Candidate Starts for Specks_254:

(Start: 131 @143067 has 35 MA's), (166, 143106), (175, 143124), (192, 143157), (208, 143184), (224, 143217), (259, 143304), (274, 143346), (311, 143445),

Gene: SrishMeg2525_247 Start: 143222, Stop: 143671, Start Num: 131

Candidate Starts for SrishMeg2525_247:

(Start: 131 @143222 has 35 MA's), (166, 143261), (175, 143279), (192, 143312), (208, 143339), (224, 143372), (259, 143459), (274, 143501), (311, 143600),

Gene: StubbySaigey_256 Start: 142752, Stop: 143201, Start Num: 131

Candidate Starts for StubbySaigey_256:

(Start: 131 @142752 has 35 MA's), (166, 142791), (175, 142809), (192, 142842), (208, 142869), (224, 142902), (259, 142989), (274, 143031), (311, 143130),

Gene: Suffolk_10 Start: 8942, Stop: 9376, Start Num: 116

Candidate Starts for Suffolk_10:

(Start: 116 @8942 has 160 MA's), (147, 8981), (164, 9005), (209, 9086), (258, 9176), (282, 9239),

Gene: Sunfish_64 Start: 42539, Stop: 42087, Start Num: 133

Candidate Starts for Sunfish_64:

(Start: 133 @42539 has 2 MA's), (145, 42524), (175, 42470), (285, 42227), (290, 42212),

Gene: Superphikiman_163 Start: 84350, Stop: 84877, Start Num: 102

Candidate Starts for Superphikiman_163:

(Start: 74 @84308 has 2 MA's), (Start: 102 @84350 has 1 MA's), (112, 84365), (230, 84587), (263, 84644), (270, 84665),

Gene: Surely_10 Start: 8943, Stop: 9377, Start Num: 116

Candidate Starts for Surely_10:

(Start: 116 @8943 has 160 MA's), (147, 8982), (164, 9006), (209, 9087), (258, 9177), (282, 9240),

Gene: Sushi23_223 Start: 114010, Stop: 114450, Start Num: 143

Candidate Starts for Sushi23_223:

(43, 113815), (55, 113851), (78, 113923), (83, 113929), (91, 113938), (Start: 113 @113968 has 1 MA's), (Start: 118 @113974 has 4 MA's), (Start: 121 @113977 has 3 MA's), (Start: 126 @113983 has 2 MA's), (Start: 143 @114010 has 12 MA's), (194, 114106), (217, 114157), (264, 114250), (293, 114322), (315, 114376), (330, 114409),

Gene: Swiphy_10 Start: 8943, Stop: 9377, Start Num: 116

Candidate Starts for Swiphy_10:

(Start: 116 @8943 has 160 MA's), (147, 8982), (164, 9006), (209, 9087), (258, 9177), (282, 9240),

Gene: Swish_10 Start: 8944, Stop: 9378, Start Num: 116

Candidate Starts for Swish_10:

(Start: 116 @8944 has 160 MA's), (147, 8983), (164, 9007), (209, 9088), (258, 9178), (282, 9241),

Gene: Tangent_16 Start: 13468, Stop: 13914, Start Num: 116

Candidate Starts for Tangent_16:

(Start: 101 @13447 has 2 MA's), (Start: 109 @13459 has 2 MA's), (Start: 116 @13468 has 160 MA's), (Start: 142 @13498 has 2 MA's), (146, 13507), (233, 13678), (258, 13711), (268, 13753), (282, 13774), (301, 13819), (316, 13855),

Gene: Targaryen_222 Start: 114182, Stop: 114622, Start Num: 143

Candidate Starts for Targaryen_222:

(78, 114095), (83, 114101), (91, 114110), (Start: 113 @114140 has 1 MA's), (Start: 118 @114146 has 4 MA's), (Start: 143 @114182 has 12 MA's), (194, 114278), (217, 114329), (264, 114422), (293, 114494), (315, 114548), (330, 114581),

Gene: Target_12 Start: 7244, Stop: 7699, Start Num: 110

Candidate Starts for Target_12:

(Start: 110 @7244 has 4 MA's), (Start: 137 @7277 has 1 MA's), (195, 7364), (220, 7424), (239, 7466), (265, 7544), (268, 7553), (306, 7634), (322, 7673),

Gene: Teardrop_140 Start: 81782, Stop: 82198, Start Num: 127

Candidate Starts for Teardrop_140:

(15, 81305), (Start: 127 @81782 has 25 MA's), (167, 81839), (198, 81902), (231, 81971), (261, 82016), (276, 82055),

Gene: Teardrop_248 Start: 142079, Stop: 142528, Start Num: 131

Candidate Starts for Teardrop_248:

(Start: 131 @142079 has 35 MA's), (166, 142118), (175, 142136), (192, 142169), (208, 142196), (224, 142229), (259, 142316), (274, 142358), (311, 142457),

Gene: Thales_1 Start: 76, Stop: 522, Start Num: 149

Candidate Starts for Thales_1:

(81, 1), (Start: 94 @16 has 1 MA's), (Start: 149 @76 has 1 MA's), (161, 94), (165, 100), (202, 175), (206, 181), (223, 226), (248, 271), (259, 313), (270, 352), (280, 364), (305, 430),

Gene: TheloniousMonk_12 Start: 7471, Stop: 7926, Start Num: 110

Candidate Starts for TheloniousMonk_12:

(Start: 110 @7471 has 4 MA's), (Start: 137 @7504 has 1 MA's), (195, 7591), (220, 7651), (239, 7693), (265, 7771), (268, 7780), (306, 7861), (322, 7900),

Gene: Thora_10 Start: 8940, Stop: 9374, Start Num: 116

Candidate Starts for Thora_10:

(Start: 116 @8940 has 160 MA's), (147, 8979), (164, 9003), (209, 9084), (258, 9174), (282, 9237),

Gene: ThreeOh3D2_10 Start: 8941, Stop: 9375, Start Num: 116

Candidate Starts for ThreeOh3D2_10:

(Start: 116 @8941 has 160 MA's), (147, 8980), (164, 9004), (209, 9085), (258, 9175), (282, 9238),

Gene: TinyTim_248 Start: 142046, Stop: 142495, Start Num: 131

Candidate Starts for TinyTim_248:

(Start: 131 @142046 has 35 MA's), (166, 142085), (175, 142103), (192, 142136), (208, 142163), (224, 142196), (259, 142283), (274, 142325), (311, 142424),

Gene: ToastyFinz_42 Start: 32290, Stop: 32811, Start Num: 96

Candidate Starts for ToastyFinz_42:

(33, 32113), (63, 32227), (Start: 96 @32290 has 3 MA's), (167, 32383), (268, 32578), (293, 32629), (310, 32668), (317, 32698),

Gene: TomBombadil_10 Start: 8943, Stop: 9377, Start Num: 116

Candidate Starts for TomBombadil_10:

(Start: 116 @8943 has 160 MA's), (147, 8982), (164, 9006), (209, 9087), (258, 9177), (282, 9240),

Gene: Tomlarah_10 Start: 8943, Stop: 9377, Start Num: 116

Candidate Starts for Tomlarah_10:

(Start: 116 @8943 has 160 MA's), (147, 8982), (164, 9006), (209, 9087), (258, 9177), (282, 9240),

Gene: Tooj_10 Start: 8941, Stop: 9375, Start Num: 116

Candidate Starts for Tooj_10:

(Start: 116 @8941 has 160 MA's), (147, 8980), (164, 9004), (209, 9085), (258, 9175), (282, 9238),

Gene: Tophat_101 Start: 63868, Stop: 64362, Start Num: 130

Candidate Starts for Tophat_101:

(64, 63760), (77, 63799), (Start: 130 @63868 has 15 MA's), (179, 63952), (213, 64024), (229, 64063), (333, 64333),

Gene: Tourach_95 Start: 60189, Stop: 60602, Start Num: 135

Candidate Starts for Tourach_95:

(Start: 135 @60189 has 75 MA's), (189, 60270), (204, 60300), (224, 60345), (225, 60348), (263, 60444), (295, 60498), (326, 60576), (334, 60594),

Gene: TriFive_93 Start: 59348, Stop: 59755, Start Num: 135

Candidate Starts for TriFive_93:

(Start: 135 @59348 has 75 MA's), (158, 59369), (224, 59498), (225, 59501), (258, 59579), (268, 59615), (315, 59702), (326, 59729),

Gene: Trinitium_246 Start: 140800, Stop: 141249, Start Num: 131

Candidate Starts for Trinitium_246:

(Start: 131 @140800 has 35 MA's), (166, 140839), (175, 140857), (192, 140890), (208, 140917), (224, 140950), (259, 141037), (274, 141079), (311, 141178),

Gene: Trypo_10 Start: 8940, Stop: 9374, Start Num: 116

Candidate Starts for Trypo_10:

(Start: 116 @8940 has 160 MA's), (147, 8979), (164, 9003), (209, 9084), (258, 9174), (282, 9237),

Gene: Tubberson_43 Start: 31467, Stop: 31979, Start Num: 98
Candidate Starts for Tubberson_43:
(Start: 98 @31467 has 4 MA's), (139, 31524), (293, 31800), (317, 31869),

Gene: Tucker_41 Start: 26756, Stop: 26394, Start Num: 151
Candidate Starts for Tucker_41:
(Start: 151 @26756 has 5 MA's), (181, 26708), (231, 26609), (273, 26531), (302, 26471),

Gene: Tyson_92 Start: 57702, Stop: 58112, Start Num: 135
Candidate Starts for Tyson_92:
(Start: 135 @57702 has 75 MA's), (168, 57732), (170, 57735), (189, 57780), (225, 57858), (248, 57900), (258, 57936), (277, 57978), (280, 57984), (305, 58032), (321, 58077), (334, 58104),

Gene: UAch1_10 Start: 8943, Stop: 9377, Start Num: 116
Candidate Starts for UAch1_10:
(Start: 116 @8943 has 160 MA's), (147, 8982), (164, 9006), (209, 9087), (258, 9177), (282, 9240),

Gene: UPIE_90 Start: 57298, Stop: 57708, Start Num: 135
Candidate Starts for UPIE_90:
(Start: 135 @57298 has 75 MA's), (168, 57328), (170, 57331), (189, 57376), (225, 57454), (248, 57496), (258, 57532), (277, 57574), (280, 57580), (305, 57628), (321, 57673), (334, 57700),

Gene: Underpass_87 Start: 54335, Stop: 54748, Start Num: 135
Candidate Starts for Underpass_87:
(Start: 135 @54335 has 75 MA's), (204, 54446), (220, 54485), (225, 54494), (258, 54572), (295, 54644), (326, 54722), (334, 54740),

Gene: Usavi_10 Start: 8940, Stop: 9374, Start Num: 116
Candidate Starts for Usavi_10:
(Start: 116 @8940 has 160 MA's), (147, 8979), (164, 9003), (209, 9084), (258, 9174), (282, 9237),

Gene: Valjean_10 Start: 8943, Stop: 9377, Start Num: 116
Candidate Starts for Valjean_10:
(Start: 116 @8943 has 160 MA's), (147, 8982), (164, 9006), (209, 9087), (258, 9177), (282, 9240),

Gene: Vetrix_93 Start: 59073, Stop: 59486, Start Num: 135
Candidate Starts for Vetrix_93:
(Start: 135 @59073 has 75 MA's), (204, 59184), (220, 59223), (225, 59232), (258, 59310), (295, 59382), (326, 59460), (334, 59478),

Gene: Vibaki_76 Start: 46752, Stop: 47243, Start Num: 127
Candidate Starts for Vibaki_76:
(Start: 127 @46752 has 25 MA's), (263, 47013),

Gene: Virapocalypse_10 Start: 8941, Stop: 9375, Start Num: 116
Candidate Starts for Virapocalypse_10:
(Start: 116 @8941 has 160 MA's), (147, 8980), (164, 9004), (209, 9085), (258, 9175), (282, 9238),

Gene: Vista_10 Start: 8943, Stop: 9377, Start Num: 116
Candidate Starts for Vista_10:
(Start: 116 @8943 has 160 MA's), (147, 8982), (164, 9006), (209, 9087), (258, 9177), (282, 9240),

Gene: Vivaldi_10 Start: 8941, Stop: 9375, Start Num: 116

Candidate Starts for Vivaldi_10:

(Start: 116 @8941 has 160 MA's), (147, 8980), (164, 9004), (209, 9085), (258, 9175), (282, 9238),

Gene: Vivi2_18 Start: 14618, Stop: 15085, Start Num: 101

Candidate Starts for Vivi2_18:

(Start: 101 @14618 has 2 MA's), (Start: 109 @14630 has 2 MA's), (Start: 116 @14639 has 160 MA's), (Start: 142 @14669 has 2 MA's), (146, 14678), (233, 14849), (258, 14882), (268, 14924), (282, 14945), (301, 14990), (316, 15026),

Gene: Vondra_43 Start: 30012, Stop: 30503, Start Num: 84

Candidate Starts for Vondra_43:

(Start: 84 @30012 has 12 MA's), (258, 30264), (261, 30279),

Gene: Wamburgexpress_90 Start: 57426, Stop: 57836, Start Num: 135

Candidate Starts for Wamburgexpress_90:

(Start: 135 @57426 has 75 MA's), (168, 57456), (170, 57459), (189, 57504), (225, 57582), (248, 57624), (258, 57660), (277, 57702), (280, 57708), (305, 57756), (321, 57801), (334, 57828),

Gene: Waterdiva_10 Start: 8944, Stop: 9378, Start Num: 116

Candidate Starts for Waterdiva_10:

(Start: 116 @8944 has 160 MA's), (147, 8983), (164, 9007), (209, 9088), (258, 9178), (282, 9241),

Gene: Weher20_10 Start: 8940, Stop: 9374, Start Num: 116

Candidate Starts for Weher20_10:

(Start: 116 @8940 has 160 MA's), (147, 8979), (164, 9003), (209, 9084), (258, 9174), (282, 9237),

Gene: WhereRU_161 Start: 91595, Stop: 92011, Start Num: 137

Candidate Starts for WhereRU_161:

(Start: 134 @91589 has 1 MA's), (Start: 137 @91595 has 1 MA's), (Start: 159 @91625 has 2 MA's), (196, 91694), (233, 91781), (270, 91847),

Gene: Whirlwind_93 Start: 59575, Stop: 59982, Start Num: 135

Candidate Starts for Whirlwind_93:

(Start: 135 @59575 has 75 MA's), (158, 59596), (224, 59725), (225, 59728), (258, 59806), (268, 59842), (315, 59929), (326, 59956),

Gene: Wigglewobble_95 Start: 59375, Stop: 59788, Start Num: 135

Candidate Starts for Wigglewobble_95:

(Start: 135 @59375 has 75 MA's), (204, 59486), (224, 59531), (225, 59534), (263, 59630), (295, 59684), (326, 59762), (334, 59780),

Gene: Wilder_96 Start: 59217, Stop: 59630, Start Num: 135

Candidate Starts for Wilder_96:

(Start: 135 @59217 has 75 MA's), (204, 59328), (220, 59367), (225, 59376), (258, 59454), (295, 59526), (326, 59604), (334, 59622),

Gene: WillSterrel_87 Start: 51270, Stop: 51782, Start Num: 87

Candidate Starts for WillSterrel_87:

(Start: 84 @51267 has 12 MA's), (Start: 87 @51270 has 1 MA's), (140, 51330), (229, 51507), (262, 51567), (303, 51654), (332, 51720), (338, 51753),

Gene: Winky_95 Start: 59815, Stop: 60228, Start Num: 135

Candidate Starts for Winky_95:

(Start: 135 @59815 has 75 MA's), (204, 59926), (224, 59971), (225, 59974), (263, 60070), (295, 60124), (326, 60202), (334, 60220),

Gene: Wyatt2_92 Start: 57733, Stop: 58143, Start Num: 135

Candidate Starts for Wyatt2_92:

(Start: 135 @57733 has 75 MA's), (168, 57763), (170, 57766), (189, 57811), (225, 57889), (248, 57931), (258, 57967), (277, 58009), (280, 58015), (305, 58063), (321, 58108), (334, 58135),

Gene: YorkOnyx_19 Start: 14161, Stop: 14622, Start Num: 116

Candidate Starts for YorkOnyx_19:

(Start: 101 @14140 has 2 MA's), (Start: 109 @14152 has 2 MA's), (Start: 116 @14161 has 160 MA's), (Start: 142 @14191 has 2 MA's), (178, 14242), (233, 14371), (268, 14446), (282, 14467), (301, 14512),

Gene: Yoshand_10 Start: 8941, Stop: 9375, Start Num: 116

Candidate Starts for Yoshand_10:

(Start: 116 @8941 has 160 MA's), (147, 8980), (164, 9004), (209, 9085), (258, 9175), (282, 9238),

Gene: YouGoGlencoco_10 Start: 8940, Stop: 9374, Start Num: 116

Candidate Starts for YouGoGlencoco_10:

(Start: 116 @8940 has 160 MA's), (147, 8979), (164, 9003), (209, 9084), (258, 9174), (282, 9237),

Gene: YoungHarleezy_70 Start: 37357, Stop: 37845, Start Num: 121

Candidate Starts for YoungHarleezy_70:

(Start: 121 @37357 has 3 MA's), (Start: 127 @37363 has 25 MA's), (Start: 152 @37393 has 3 MA's), (319, 37789),

Gene: Yucca_250 Start: 143605, Stop: 144054, Start Num: 131

Candidate Starts for Yucca_250:

(Start: 131 @143605 has 35 MA's), (166, 143644), (175, 143662), (192, 143695), (208, 143722), (224, 143755), (259, 143842), (274, 143884), (311, 143983),

Gene: Yvonnetastic_131 Start: 74014, Stop: 74502, Start Num: 114

Candidate Starts for Yvonnetastic_131:

(Start: 114 @74014 has 1 MA's), (147, 74062), (160, 74080), (209, 74179), (265, 74311), (288, 74356),

Gene: Zaider_11 Start: 9173, Stop: 9607, Start Num: 116

Candidate Starts for Zaider_11:

(Start: 116 @9173 has 160 MA's), (147, 9212), (164, 9236), (209, 9317), (258, 9407), (282, 9470),

Gene: Zakai_96 Start: 59860, Stop: 60273, Start Num: 135

Candidate Starts for Zakai_96:

(Start: 135 @59860 has 75 MA's), (204, 59971), (220, 60010), (225, 60019), (258, 60097), (295, 60169), (326, 60247), (334, 60265),

Gene: Zaria_91 Start: 56841, Stop: 57251, Start Num: 135

Candidate Starts for Zaria_91:

(Start: 135 @56841 has 75 MA's), (168, 56871), (170, 56874), (189, 56919), (225, 56997), (248, 57039), (258, 57075), (277, 57117), (280, 57123), (305, 57171), (321, 57216), (334, 57243),

Gene: Zelda_10 Start: 8943, Stop: 9377, Start Num: 116

Candidate Starts for Zelda_10:

(Start: 116 @8943 has 160 MA's), (147, 8982), (164, 9006), (209, 9087), (258, 9177), (282, 9240),

Gene: ZhongYanYuan_92 Start: 59271, Stop: 59684, Start Num: 135

Candidate Starts for ZhongYanYuan_92:

(Start: 135 @59271 has 75 MA's), (204, 59382), (220, 59421), (225, 59430), (258, 59508), (295, 59580), (326, 59658), (334, 59676),

Gene: Zonia_10 Start: 8957, Stop: 9391, Start Num: 116

Candidate Starts for Zonia_10:

(Start: 116 @8957 has 160 MA's), (147, 8996), (164, 9020), (209, 9101), (258, 9191), (282, 9254),

Gene: Zulu_41 Start: 26737, Stop: 26375, Start Num: 151

Candidate Starts for Zulu_41:

(Start: 151 @26737 has 5 MA's), (181, 26689), (231, 26590), (273, 26512), (302, 26452),

Gene: ZygoTaiga_246 Start: 143902, Stop: 144351, Start Num: 131

Candidate Starts for ZygoTaiga_246:

(Start: 131 @143902 has 35 MA's), (166, 143941), (175, 143959), (192, 143992), (208, 144019), (224, 144052), (259, 144139), (274, 144181), (311, 144280),

Gene: phiHau3_61 Start: 41644, Stop: 41168, Start Num: 149

Candidate Starts for phiHau3_61:

(Start: 149 @41644 has 1 MA's), (183, 41575), (237, 41452), (242, 41440), (252, 41416), (258, 41404), (278, 41344),