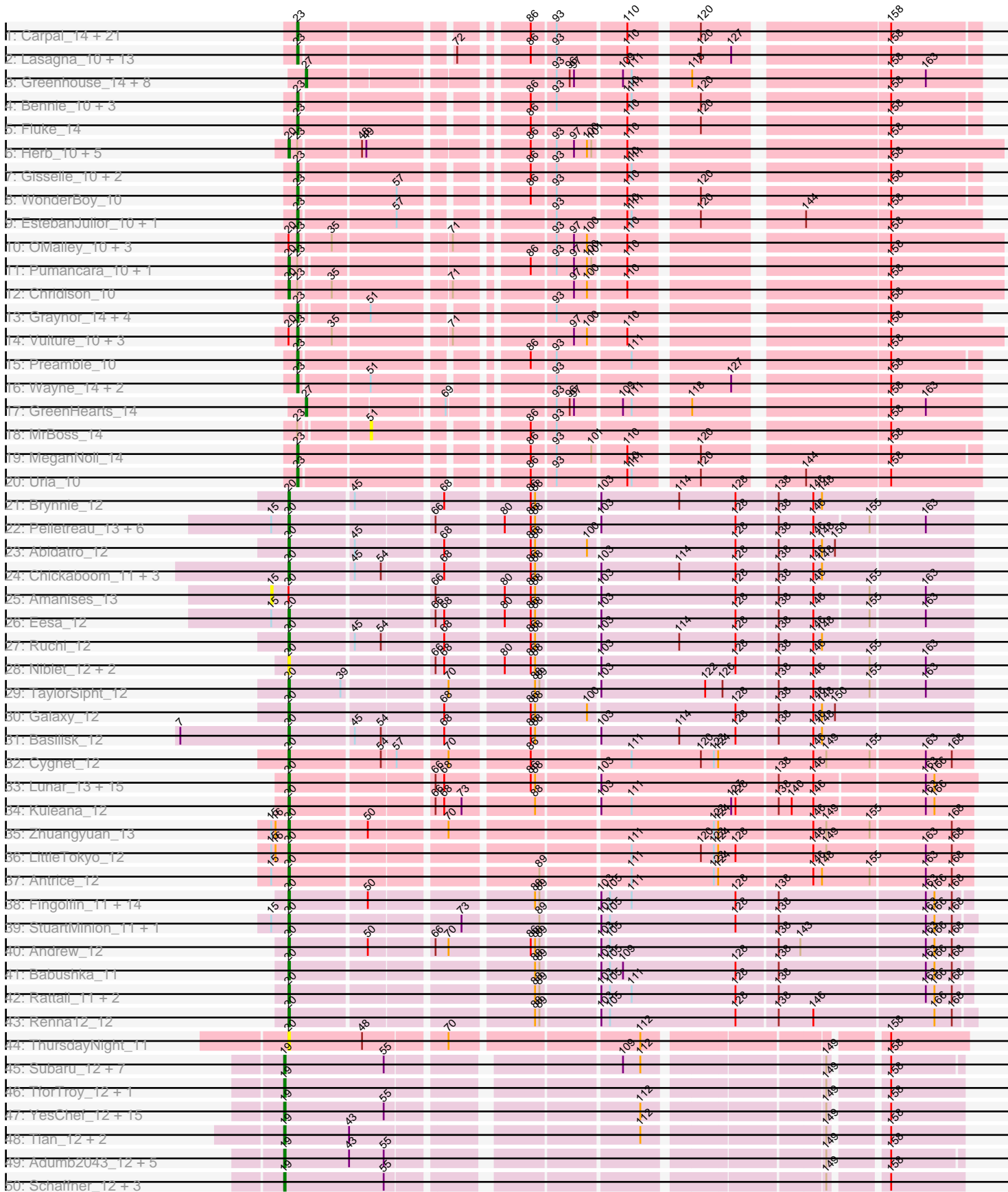
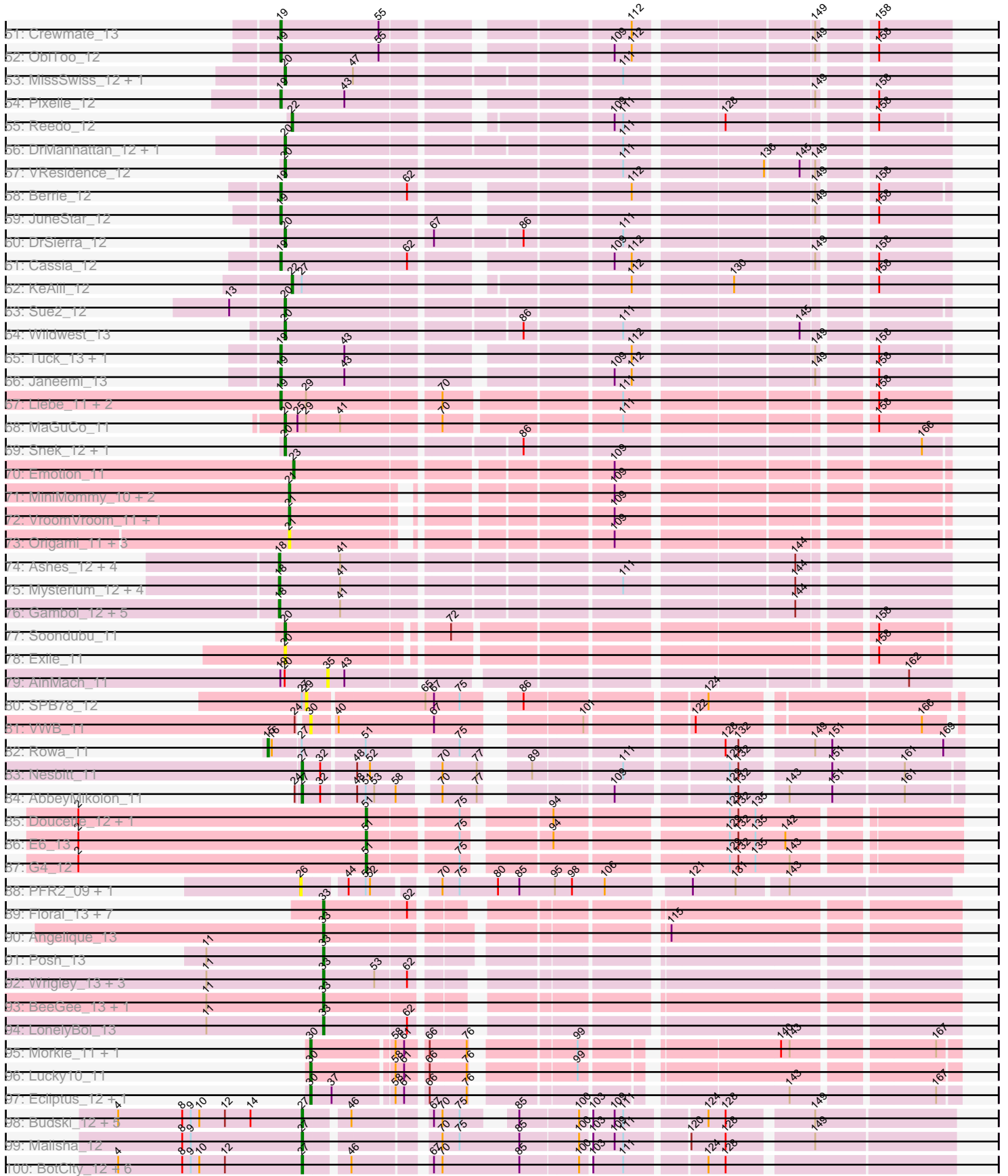


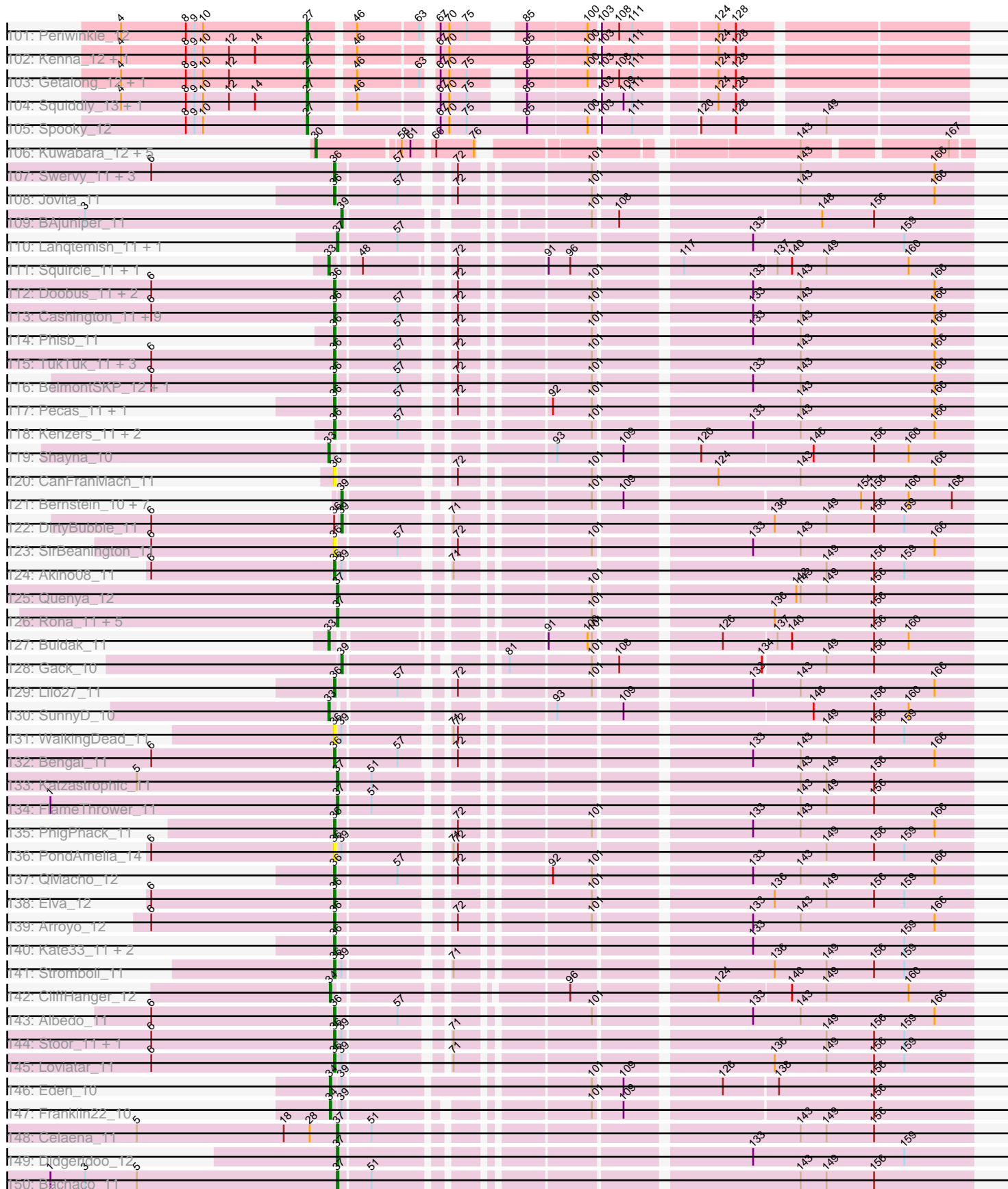
Pham 294326



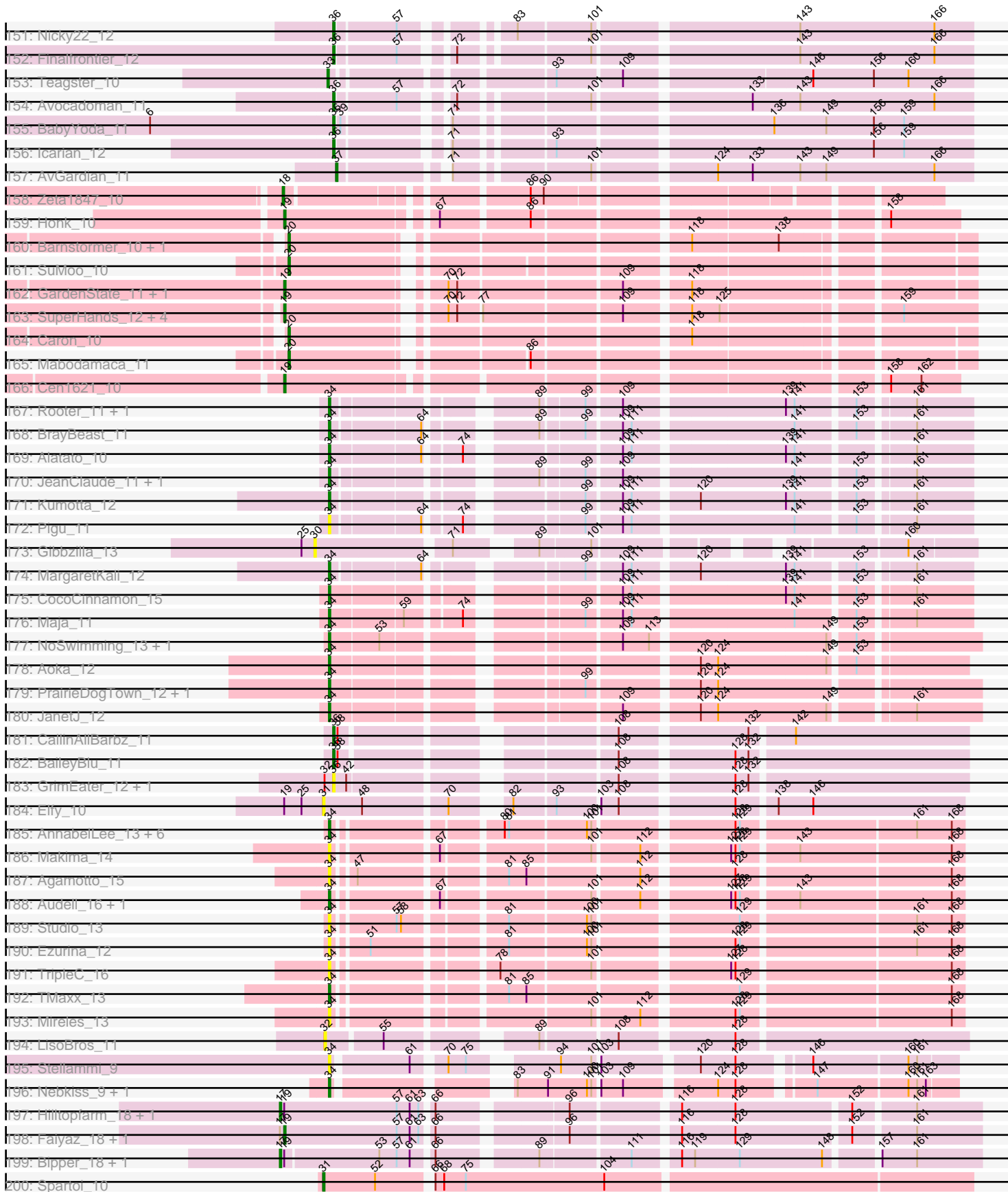
Pham 294326



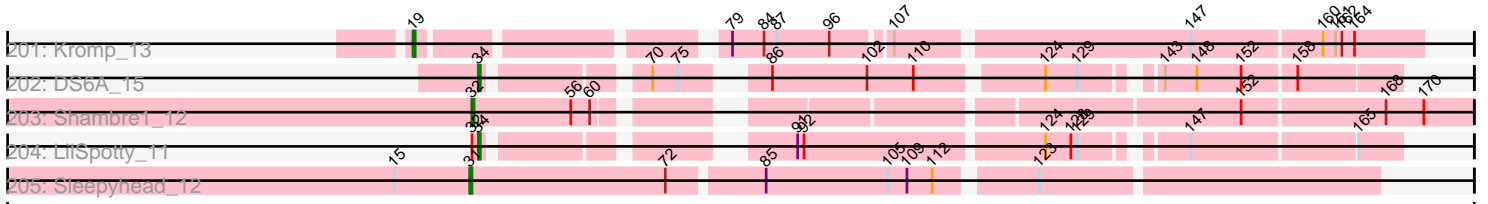
Pham 294326



Pham 294326



Pham 294326



Note: Tracks are now grouped by subcluster and scaled. Switching in subcluster is indicated by changes in track color. Track scale is now set by default to display the region 30 bp upstream of start 1 to 30 bp downstream of the last possible start. If this default region is judged to be packed too tightly with annotated starts, the track will be further scaled to only show that region of the ORF with annotated starts. This action will be indicated by adding "Zoomed" to the title. For starts, yellow indicates the location of called starts comprised solely of Glimmer/GeneMark auto-annotations, green indicates the location of called starts with at least 1 manual gene annotation.

Pham 294326 Report

This analysis was run 04/18/26 on database version 643.

WARNING: Pham size does not match number of genes in report. Either unphamerated genes have been added (by you) or starterator has removed genes due to invalid start codon.

Pham number 294326 has 466 members, 85 are drafts.

Phages represented in each track:

- Track 1 : Carpal_14, Wawa_14, Korra_14, Glenn_14, Kalizoi_14, Dino_14, Vallejo_14, BrotherBLo_14, Zorro_14, Cholula_14, RAP15_14, TattModd_14, Jumboset_14, Rozby_14, MrGloopy_14, Riverdale_14, BigMack_10, Scuttle_14, Potatoes_14, Savage2526_14, Immaculata_14, Beethoven_14
- Track 2 : Lasagna_10, OurGirlNessie_10, PitaDog_10, Christian_10, Lucy_10, ChewChew_10, Makoto_10, CristinaYang_10, Nancia_10, Bodacious_10, Lennox_10, DrRobert_10, LilStuart_10, Pterodactyl_10
- Track 3 : Greenhouse_14, Lakshmi_14, Nubia_14, RcigaStruga_14, Oxyfnrius_14, Joann_14, Albanese_14, Huntingdon_14, Misaeng_14
- Track 4 : Bennie_10, Huckleberry_10, HeadNerd_10, Moki_10
- Track 5 : Fluke_14
- Track 6 : Herb_10, Sergei_10, Daiboju_10, Maria1952_10, KingBob_10, Temper16_10
- Track 7 : Gisselle_10, Kittykat_10, DreamTeam_10
- Track 8 : WonderBoy_10
- Track 9 : EstebanJulior_10, MamaPearl_10
- Track 10 : OMalley_10, Aledel_10, Eunoia_10, Riovina_10
- Track 11 : Pumancara_10, PinkFriday_10
- Track 12 : Chridison_10
- Track 13 : Graynor_14, AppleCider_14, Litotes_14, PartyCup_14, CallieOMalley_14
- Track 14 : Vulture_10, Supakev_10, AustinPowers_10, HunterDalle_10
- Track 15 : Preamble_10
- Track 16 : Wayne_14, Suppi_14, Canowicakte_14
- Track 17 : GreenHearts_14
- Track 18 : MrBoss_14
- Track 19 : MeganNoll_14
- Track 20 : Urla_10
- Track 21 : Brynnie_12
- Track 22 : Pelletreau_13, Shen_13, Orcanus_12, KendraB23_13, Westrich_13, Toad24_13, Gravel_13
- Track 23 : Abidatro_12
- Track 24 : Chickaboom_11, Vulpecula_12, Jamun_12, WileyE_11
- Track 25 : Amanises_13

- Track 26 : Eesa_12
- Track 27 : Ruchi_12
- Track 28 : Niblet_12, Chicken_12, Zixiang_12
- Track 29 : TaylorSipht_12
- Track 30 : Galaxy_12
- Track 31 : Basilisk_12
- Track 32 : Cygnet_12
- Track 33 : Lunar_13, Pineda_13, Bibble12_13, Jerole_13, Polka_12, Daob_13, Coral_12, Colusalem_12, HannahPhantana_13, OtsoOtso_12, Melons_13, Bedetta_13, PhirstandPhine_13, Kepler_12, Amelia_13, Cote_13
- Track 34 : Kuleana_12
- Track 35 : Zhuangyuan_13
- Track 36 : LittleTokyo_12
- Track 37 : Antrice_12
- Track 38 : Fingolfin_11, Oppalora_11, HamCheese_11, Glotell_11, Juno112_11, Atlantica_11, RedFox_11, Amphitrite_11, PhluffyCoco_11, DanHam62_11, AmiCi24_11, KHumphrey_11, Laphuphu24k_11, AdoptaAdorbs_11, Camara_11
- Track 39 : StuartMinion_11, AlexMinion_11
- Track 40 : Andrew_12
- Track 41 : Babushka_11
- Track 42 : Rattail_11, Azaz_11, Leona_11
- Track 43 : Renna12_12
- Track 44 : ThursdayNight_11
- Track 45 : Subaru_12, Elezi_12, Jstan_12, London_12, Niobe_12, Eraser_12, Skelbel_12, Asa16_12
- Track 46 : TforTroy_12, Yang_12
- Track 47 : YesChef_12, Tbone_12, Mudpuppy_12, Joemato_12, JohnDoe_12, Lego_12, Simpson_13, Powerpuff_12, Cyan_12, Iter_12, Kaylissa_12, Tutumahutu_12, AGrandiflora_12, Warda_12, Lizalica_12, Ascela_12
- Track 48 : Tian_12, Amyev_12, Phives_13
- Track 49 : Adumb2043_12, Nitro_12, Tallboi_12, Turab_12, Amploria_12, AEgle_12
- Track 50 : Schaffner_12, IttyBittyPiggy_12, Flutur_12, Pumpkins_12
- Track 51 : Crewmate_13
- Track 52 : ObiToo_12
- Track 53 : MissSwiss_12, PandaPo_12
- Track 54 : Pixelle_12
- Track 55 : Reedo_12
- Track 56 : DrManhattan_12, Adolin_12
- Track 57 : VResidence_12
- Track 58 : Berrie_12
- Track 59 : JuneStar_12
- Track 60 : DrSierra_12
- Track 61 : Cassia_12
- Track 62 : KeAlii_12
- Track 63 : Sue2_12
- Track 64 : Wildwest_13
- Track 65 : Tuck_13, Community_13
- Track 66 : Janeemi_13
- Track 67 : Liebe_11, IUFootball_11, Maureen_11
- Track 68 : MaGuCo_11
- Track 69 : Snek_12, Tweety19_12
- Track 70 : Emotion_11
- Track 71 : MiniMommy_10, JasmineDragon_11, ShakeltOph_11

- Track 72 : VroomVroom_11, AceofSpades_10
- Track 73 : Origami_11, JohnThicc_11, FiveHead_11, LadyAstra_11
- Track 74 : Ashes_12, SpecialK_12, Halsey_12, RockScotty_12, Moss_12
- Track 75 : Mysterium_12, Gumpizza_12, Beaupre_12, Giorgio_12, Stuu_12
- Track 76 : Gambol_12, Sooty_12, Cappuccino_12, Kalimba_12, Donkey_12, Sabourin_12
- Track 77 : Soondubu_11
- Track 78 : Exile_11
- Track 79 : AinMach_11
- Track 80 : SPB78_12
- Track 81 : VWB_11
- Track 82 : Rowa_11
- Track 83 : Nesbitt_11
- Track 84 : AbbeyMikolon_11
- Track 85 : Doucette_12, B22_12
- Track 86 : E6_13
- Track 87 : G4_12
- Track 88 : PFR2_09, PFR1_09
- Track 89 : Floral_13, BritBrat_13, EMSquaredA_13, Pollux_13, Lilas_13, Bradissa_13, EnalisNailo_13, Marteena_13
- Track 90 : Angelique_13
- Track 91 : Posh_13
- Track 92 : Wrigley_13, Jablanski_13, Pytheas_13, Confidence_13
- Track 93 : BeeGee_13, Cashline_13
- Track 94 : LonelyBoi_13
- Track 95 : Morkie_11, PhorbesPhlower_11
- Track 96 : Lucky10_11
- Track 97 : Ecliptus_12, ODay_12
- Track 98 : Budski_12, Phabuloso_12, Kamaru_12, CheeseTouch_12, Holliday_12, LitninMcQueen_12
- Track 99 : Malisha_12
- Track 100 : BotCity_12, Horus_12, BENtherdunthat_12, ShawBrad_12, Frickyeah_12, Leroy_12, Asapag_12
- Track 101 : Periwinkle_12
- Track 102 : Kenna_12, Lutum_12
- Track 103 : Getalong_12, Whitney_12
- Track 104 : Squiddly_13, Phistory_12
- Track 105 : Spooky_12
- Track 106 : Kuwabara_12, BearBQ_12, MortyNRick_12, Birdsong_12, Apricot_12, Crater_12
- Track 107 : Swervy_11, Slay_11, AylexOG_12, SarBear_11
- Track 108 : Jovita_11
- Track 109 : BAjuniper_11
- Track 110 : Lahqtemish_11, PastaFagioli_11
- Track 111 : Squirrel_11, Olliecat_11
- Track 112 : Doobus_11, CroZenni_11, Albright_11
- Track 113 : Cashington_11, Solea_12, Milomuff_12, Johnathan_11, SansAfet_11, DickRichards_11, Softsoap_11, Abigail_11, LimaBean_11, Burritobowl_11
- Track 114 : Phisb_11
- Track 115 : TukTuk_11, CupcakePrincess_11, Jabb_11, MsUbiquitous_11
- Track 116 : BelmontSKP_12, AnnaLie_12
- Track 117 : Pecas_11, Eula_11
- Track 118 : Kenzers_11, Lynlen_11, BubbaBear_11

- Track 119 : Shayna_10
- Track 120 : CanFranMach_11
- Track 121 : Bernstein_10, Armstrong_10, Coltrane_10, Clayda5_10, Rollins_10, Vitas_10, Skylord_10, Brahms_10
- Track 122 : DirtyBubble_11
- Track 123 : SirBeanington_11
- Track 124 : Akino08_11
- Track 125 : Quenya_12
- Track 126 : Rona_11, ChiliPepper_11, Kamdara_11, Sharkboy_11, Kieran_11, Dismas_11
- Track 127 : Buldak_11
- Track 128 : Gack_10
- Track 129 : Lilo27_11
- Track 130 : SunnyD_10
- Track 131 : WalkingDead_11
- Track 132 : Bengal_11
- Track 133 : Katzastrophic_11
- Track 134 : FlameThrower_11
- Track 135 : PhigPhack_11
- Track 136 : PondAmelia_14
- Track 137 : QMacho_12
- Track 138 : Elva_12
- Track 139 : Arroyo_12
- Track 140 : Kate33_11, BabyDaisy_12, IndyLu_11
- Track 141 : Stromboli_11
- Track 142 : CliffHanger_12
- Track 143 : Albedo_11
- Track 144 : Stoor_11, SanaSana_12
- Track 145 : Loviatar_11
- Track 146 : Eden_10
- Track 147 : Franklin22_10
- Track 148 : Celaena_11
- Track 149 : Didgeridoo_12
- Track 150 : Bachaco_11
- Track 151 : Nicky22_12
- Track 152 : Finalfrontier_12
- Track 153 : Teagster_10
- Track 154 : Avocadoman_11
- Track 155 : BabyYoda_11
- Track 156 : Icarian_12
- Track 157 : AvGardian_11
- Track 158 : Zeta1847_10
- Track 159 : Honk_10
- Track 160 : Barnstormer_10, UtzChips_10
- Track 161 : SuMoo_10
- Track 162 : GardenState_11, IAmGroot_11
- Track 163 : SuperHands_12, Gretchen_11, Floop_11, Percival_11, Forester_20
- Track 164 : Caron_10
- Track 165 : Mabodamaca_11
- Track 166 : Cen1621_10
- Track 167 : Rooter_11, Sarge_11
- Track 168 : BrayBeast_11
- Track 169 : Alatato_10

- Track 170 : JeanClaude_11, Shoya_10
- Track 171 : Kumotta_12
- Track 172 : Pigu_11
- Track 173 : Gibbzilla_13
- Track 174 : MargaretKali_12
- Track 175 : CocoCinnamon_15
- Track 176 : Maja_11
- Track 177 : NoSwimming_13, Scotia_13
- Track 178 : Aoka_12
- Track 179 : PrairieDogTown_12, EvenBluerMoon_12
- Track 180 : JanetJ_12
- Track 181 : CallinAllBarbz_11
- Track 182 : BaileyBlu_11
- Track 183 : GrimEater_12, Jankie_13
- Track 184 : Elfy_10
- Track 185 : AnnabelLee_13, Neuville_13, CardboardBox_13, ChamoyPickle_13, Roberts_13, Gerri43_13, ChipsNGuac_13
- Track 186 : Makima_14
- Track 187 : Agamoto_15
- Track 188 : Audell_16, LastNadiia_16
- Track 189 : Studio_13
- Track 190 : Ezurina_12
- Track 191 : TripleC_16
- Track 192 : TMaxx_13
- Track 193 : Mireles_13
- Track 194 : LisoBros_11
- Track 195 : Stellammi_9
- Track 196 : Nebkiss_9, Gaia_9
- Track 197 : Hilltopfarm_18, Typha_18
- Track 198 : Faiyaz_18, AuntGwenStacy_18
- Track 199 : Bipper_18, Cracklewink_18
- Track 200 : Spartoi_10
- Track 201 : Kromp_13
- Track 202 : DS6A_15
- Track 203 : Shambre1_12
- Track 204 : LilSpotty_11
- Track 205 : Sleepyhead_12

Summary of Final Annotations (See graph section above for start numbers):

The start number called the most often in the published annotations is 20, it was called in 69 of the 381 non-draft genes in the pham.

Genes that call this "Most Annotated" start:

- Abidatro_12, Adolin_12, AdoptaAdorbs_11, AlexMinion_11, Amelia_13, AmiCi24_11, Amphitrite_11, Andrew_12, Antrice_12, Atlantica_11, Azaz_11, Babushka_11, Barnstormer_10, Basilisk_12, Bedetta_13, Bibble12_13, Brynnie_12, Camara_11, Caron_10, Chickaboom_11, Chicken_12, Chridison_10, Colusalem_12, Coral_12, Cote_13, Cygnet_12, Daiboju_10, DanHam62_11, Daob_13, DrManhattan_12, DrSierra_12, Eesa_12, Exile_11, Fingolfin_11, Galaxy_12,

Glottell_11, Gravel_13, HamCheese_11, HannahPhantana_13, Herb_10, Jamun_12, Jerole_13, Juno112_11, KHumphrey_11, KendraB23_13, Kepler_12, KingBob_10, Kuleana_12, Laphuphu24k_11, Leona_11, LittleTokyo_12, Lunar_13, MaGuCo_11, Mabodamaca_11, Maria1952_10, Melons_13, MissSwiss_12, Niblet_12, Oppalora_11, Orcanus_12, OtsoOtso_12, PandaPo_12, Pelletreau_13, PhirstandPhine_13, PhluffyCoco_11, Pineda_13, PinkFriday_10, Polka_12, Pumancara_10, Rattail_11, RedFox_11, Renna12_12, Ruchi_12, Sergei_10, Shen_13, Snek_12, Soondubu_11, StuartMinion_11, SuMoo_10, Sue2_12, TaylorSipht_12, Temper16_10, ThursdayNight_11, Toad24_13, Tweety19_12, UtzChips_10, VResidence_12, Vulpecula_12, Westrich_13, Wildwest_13, WileyE_11, Zhuangyuan_13, Zixiang_12,

Genes that have the "Most Annotated" start but do not call it:

- AinMach_11, Aledel_10, Amanises_13, AustinPowers_10, Eunoia_10, HunterDalle_10, OMalley_10, Riovina_10, Supakev_10, Vulture_10,

Genes that do not have the "Most Annotated" start:

- AEgle_12, AGrandiflora_12, AbbeyMikolon_11, Abigail_11, AceofSpades_10, Adumb2043_12, Agamoto_15, Akino08_11, Alatato_10, Albanese_14, Albedo_11, Albright_11, Amploria_12, Amyev_12, Angelique_13, AnnaLie_12, AnnabelLee_13, Aoka_12, AppleCider_14, Apricot_12, Armstrong_10, Arroyo_12, Asa16_12, Asapag_12, Ascela_12, Ashes_12, Audell_16, AuntGwenStacy_18, AvGardian_11, Avocadoman_11, AylexOG_12, B22_12, BAjuniper_11, BENtherdunthat_12, BabyDaisy_12, BabyYoda_11, Bachaco_11, BaileyBlu_11, BearBQ_12, Beaupre_12, BeeGee_13, Beethoven_14, BelmontSKP_12, Bengal_11, Bennie_10, Bernstein_10, Berrie_12, BigMack_10, Bipper_18, Birdsong_12, Bodacious_10, BotCity_12, Bradissa_13, Brahms_10, BrayBeast_11, BritBrat_13, BrotherBLo_14, BubbaBear_11, Budski_12, Buldak_11, Burritobowl_11, CallieOMalley_14, CallinAllBarbz_11, CanFranMach_11, Canowicakte_14, Cappuccino_12, CardboardBox_13, Carpal_14, Cashington_11, Cashline_13, Cassia_12, Celaena_11, Cen1621_10, ChamoyPickle_13, CheeseTouch_12, ChewChew_10, ChiliPepper_11, ChipsNGuac_13, Cholula_14, Christian_10, Clayda5_10, CliffHanger_12, CocoCinnamon_15, Coltrane_10, Community_13, Confidence_13, Cracklewink_18, Crater_12, Crewmate_13, CristinaYang_10, CroZenni_11, CupcakePrincess_11, Cyan_12, DS6A_15, DickRichards_11, Didgeridoo_12, Dino_14, DirtyBubble_11, Dismas_11, Donkey_12, Doobus_11, Doucette_12, DrRobert_10, DreamTeam_10, E6_13, EMSquaredA_13, Ecliptus_12, Eden_10, Elezi_12, Elfy_10, Elva_12, Emotion_11, EnalisNailo_13, Eraser_12, EstebanJulior_10, Eula_11, EvenBluerMoon_12, Ezurina_12, Faiyaz_18, Finalfrontier_12, FiveHead_11, FlameThrower_11, Floof_11, Floral_13, Fluke_14, Flutur_12, Forester_20, Franklin22_10, Frickyeah_12, G4_12, Gack_10, Gaia_9, Gambol_12, GardenState_11, Gerri43_13, Getalong_12, Gibbzilla_13, Giorgio_12, Gisselle_10, Glenn_14, Graynor_14, GreenHearts_14, Greenhouse_14, Gretchen_11, GrimEater_12, Gumpizza_12, Halsey_12, HeadNerd_10, Hilltopfarm_18, Holliday_12, Honk_10, Horus_12, Huckleberry_10, Huntingdon_14, IAmGroot_11, IUFootball_11, Icarian_12, Immaculata_14, IndyLu_11, Iter_12, IttyBittyPiggy_12, Jabb_11, Jablanski_13, Janeemi_13, JanetJ_12, Jankie_13, JasmineDragon_11, JeanClaude_11, Joann_14, Joemato_12, JohnDoe_12, JohnThicc_11, Johnathan_11, Jovita_11, Jstan_12, Jumboset_14, JuneStar_12, Kalimba_12, Kalizoi_14, Kamaru_12, Kamdara_11, Kate33_11, Katzastrophic_11, Kaylissa_12, KeAlii_12, Kenna_12, Kenzers_11, Kieran_11, Kittykat_10, Korra_14, Kromp_13, Kumotta_12, Kuwabara_12, LadyAstra_11, Lahqtemish_11, Lakshmi_14, Lasagna_10, LastNadiia_16, Lego_12, Lennox_10, Leroy_12, Liebe_11,

LilSpotty_11, LilStuart_10, Lilas_13, Lilo27_11, LimaBean_11, LisoBros_11, LitninMcQueen_12, Litotes_14, Lizalica_12, London_12, LonelyBoi_13, Loviatar_11, Lucky10_11, Lucy_10, Lutum_12, Lynlen_11, Maja_11, Makima_14, Makoto_10, Malisha_12, MamaPearl_10, MargaretKali_12, Marteena_13, Maureen_11, MeganNoll_14, Milomuff_12, MiniMommy_10, Mireles_13, Misaeng_14, Moki_10, Morkie_11, MortyNRick_12, Moss_12, MrBoss_14, MrGloopy_14, MsUbiquitous_11, Mudpuppy_12, Mysterium_12, Nancia_10, Nebkiss_9, Nesbitt_11, Neuville_13, Nicky22_12, Niobe_12, Nitro_12, NoSwimming_13, Nubia_14, ODay_12, ObiToo_12, Olliecat_11, Origami_11, OurGirlNessie_10, Oxynfrius_14, PFR1_09, PFR2_09, PartyCup_14, PastaFagioli_11, Pecas_11, Percival_11, Periwinkle_12, Phabuloso_12, PhigPhack_11, Phisb_11, Phistory_12, Phives_13, PhorbesPhlower_11, Pigu_11, PitaDog_10, Pixelle_12, Pollux_13, PondAmelia_14, Posh_13, Potatoes_14, Powerpuff_12, PrairieDogTown_12, Preamble_10, Pterodactyl_10, Pumpkins_12, Pytheas_13, QMacho_12, Quenya_12, RAP15_14, RcigaStruga_14, Reedo_12, Riverdale_14, Roberts_13, RockScotty_12, Rollins_10, Rona_11, Rooter_11, Rowa_11, Rozby_14, SPB78_12, Sabourin_12, SanaSana_12, SansAfet_11, SarBear_11, Sarge_11, Savage2526_14, Schaffner_12, Scotia_13, Scuttle_14, ShakeltOph_11, Shambre1_12, Sharkboy_11, ShawBrad_12, Shayna_10, Shoya_10, Simpson_13, SirBeanington_11, Skelbel_12, Skylord_10, Slay_11, Sleepyhead_12, Softsoap_11, Solea_12, Sooty_12, Spartoi_10, SpecialK_12, Spooky_12, Squiddly_13, Squirrel_11, Stellammi_9, Stoor_11, Stromboli_11, Studio_13, Stuu_12, Subaru_12, SunnyD_10, SuperHands_12, Suppi_14, Swervy_11, TMaxx_13, Tallboi_12, TattModd_14, Tbone_12, Teagster_10, TforTroy_12, Tian_12, TripleC_16, Tuck_13, TukTuk_11, Turab_12, Tutumahutu_12, Typha_18, Urla_10, VWB_11, Vallejo_14, Vitas_10, VroomVroom_11, WalkingDead_11, Warda_12, Wawa_14, Wayne_14, Whitney_12, WonderBoy_10, Wrigley_13, Yang_12, YesChef_12, Zeta1847_10, Zorro_14,

Summary by start number:

Start 15:

- Found in 16 of 466 (3.4%) of genes in pham
- Manual Annotations of this start: 1 of 381
- Called 12.5% of time when present
- Phage (with cluster) where this start called: Amanises_13 (AS1), Rowa_11 (BL),

Start 17:

- Found in 6 of 466 (1.3%) of genes in pham
- Manual Annotations of this start: 4 of 381
- Called 66.7% of time when present
- Phage (with cluster) where this start called: Bipper_18 (Y), Cracklewink_18 (Y), Hilltopfarm_18 (Y), Typha_18 (Y),

Start 18:

- Found in 18 of 466 (3.9%) of genes in pham
- Manual Annotations of this start: 17 of 381
- Called 94.4% of time when present
- Phage (with cluster) where this start called: Ashes_12 (AZ5), Beaupre_12 (AZ5), Cappuccino_12 (AZ5), Donkey_12 (AZ5), Gambol_12 (AZ5), Giorgio_12 (AZ5), Gumpizza_12 (AZ5), Halsey_12 (AZ5), Kalimba_12 (AZ5), Moss_12 (AZ5), Mysterium_12 (AZ5), RockScotty_12 (AZ5), Sabourin_12 (AZ5), Sooty_12 (AZ5), SpecialK_12 (AZ5), Stuu_12 (AZ5), Zeta1847_10 (EH),

Start 19:

- Found in 69 of 466 (14.8%) of genes in pham
- Manual Annotations of this start: 48 of 381
- Called 91.3% of time when present
- Phage (with cluster) where this start called: AEgle_12 (AZ1), AGrandiflora_12 (AZ1), Adumb2043_12 (AZ1), Amploria_12 (AZ1), Amyev_12 (AZ1), Asa16_12 (AZ1), Ascela_12 (AZ1), AuntGwenStacy_18 (Y), Berrie_12 (AZ1), Cassia_12 (AZ1), Cen1621_10 (EH), Community_13 (AZ1), Crewmate_13 (AZ1), Cyan_12 (AZ1), Elezi_12 (AZ1), Eraser_12 (AZ1), Faiyaz_18 (Y), Floof_11 (EH), Flutur_12 (AZ), Forester_20 (EH), GardenState_11 (EH), Gretchen_11 (EH), Honk_10 (EH), IAmGroot_11 (EH), IUFootball_11 (AZ2), Iter_12 (AZ1), IttyBittyPiggy_12 (AZ1), Janeemi_13 (AZ1), Joemato_12 (AZ1), JohnDoe_12 (AZ1), Jstan_12 (AZ1), JuneStar_12 (AZ1), Kaylissa_12 (AZ1), Kromp_13 (singleton), Lego_12 (AZ1), Liebe_11 (AZ2), Lizalica_12 (AZ1), London_12 (AZ1), Maureen_11 (AZ2), Mudpuppy_12 (AZ1), Niobe_12 (AZ1), Nitro_12 (AZ1), ObiToo_12 (AZ1), Percival_11 (EH), Phives_13 (AZ1), Pixelle_12 (AZ1), Powerpuff_12 (AZ1), Pumpkins_12 (AZ1), Schaffner_12 (AZ1), Simpson_13 (AZ1), Skelbel_12 (AZ1), Subaru_12 (AZ1), SuperHands_12 (EH), Tallboi_12 (AZ1), Tbone_12 (AZ1), TforTroy_12 (AZ1), Tian_12 (AZ1), Tuck_13 (AZ1), Turab_12 (AZ1), Tutumahutu_12 (AZ1), Warda_12 (AZ1), Yang_12 (AZ1), YesChef_12 (AZ1),

Start 20:

- Found in 103 of 466 (22.1%) of genes in pham
- Manual Annotations of this start: 69 of 381
- Called 90.3% of time when present
- Phage (with cluster) where this start called: Abidatro_12 (AS1), Adolin_12 (AZ1), AdoptaAdorbs_11 (AS3), AlexMinion_11 (AS3), Amelia_13 (AS2), AmCi24_11 (AS3), Amphitrite_11 (AS3), Andrew_12 (AS3), Antrice_12 (AS2), Atlantica_11 (AS3), Azaz_11 (AS3), Babushka_11 (AS3), Barnstormer_10 (EH), Basilisk_12 (AS1), Bedetta_13 (AS2), Bible12_13 (AS2), Brynnie_12 (AS1), Camara_11 (AS3), Caron_10 (EH), Chickaboom_11 (AS1), Chicken_12 (AS1), Chridison_10 (AK), Colusalem_12 (AS2), Coral_12 (AS2), Cote_13 (AS2), Cygnet_12 (AS2), Daiboju_10 (AK), DanHam62_11 (AS3), Daob_13 (AS2), DrManhattan_12 (AZ1), DrSierra_12 (AZ1), Eesa_12 (AS1), Exile_11 (AZ6), Fingolfin_11 (AS3), Galaxy_12 (AS1), Glotell_11 (AS3), Gravel_13 (AS1), HamCheese_11 (AS3), HannahPhantana_13 (AS2), Herb_10 (AK), Jamun_12 (AS1), Jerole_13 (AS2), Juno12_11 (AS3), KHumphrey_11 (AS3), KendraB23_13 (AS1), Kepler_12 (AS2), KingBob_10 (AK), Kuleana_12 (AS2), Laphuphu24k_11 (AS3), Leona_11 (AS3), LittleTokyo_12 (AS2), Lunar_13 (AS2), MaGuCo_11 (AZ2), Mabodamaca_11 (EH), Maria1952_10 (AK), Melons_13 (AS2), MissSwiss_12 (AZ1), Niblet_12 (AS1), Oppalora_11 (AS3), Orcanus_12 (AS1), OtsoOtso_12 (AS2), PandaPo_12 (AZ1), Pelletreau_13 (AS1), PhirstandPhine_13 (AS2), PhluffyCoco_11 (AS3), Pineda_13 (AS2), PinkFriday_10 (AK), Polka_12 (AS2), Pumancara_10 (AK), Rattail_11 (AS3), RedFox_11 (AS3), Renna12_12 (AS3), Ruchi_12 (AS1), Sergei_10 (AK), Shen_13 (AS1), Snek_12 (AZ3), Soondubu_11 (AZ6), StuartMinion_11 (AS3), SuMoo_10 (EH), Sue2_12 (AZ1), TaylorSipt_12 (AS1), Temper16_10 (AK), ThursdayNight_11 (AZ), Toad24_13 (AS1), Tweety19_12 (AZ3), UtzChips_10 (EH), VResidence_12 (AZ1), Vulpecula_12 (AS1), Westrich_13 (AS1), Wildwest_13 (AZ1), WileyE_11 (AS1), Zhuangyuan_13 (AS2), Zixiang_12 (AS1),

Start 21:

- Found in 9 of 466 (1.9%) of genes in pham
- Manual Annotations of this start: 4 of 381

- Called 100.0% of time when present
- Phage (with cluster) where this start called: AceofSpades_10 (AZ4), FiveHead_11 (AZ4), JasmineDragon_11 (AZ4), JohnThicc_11 (AZ4), LadyAstra_11 (AZ4), MiniMommy_10 (AZ4), Origami_11 (AZ4), ShakeltOph_11 (AZ4), VroomVroom_11 (AZ4),

Start 22:

- Found in 2 of 466 (0.4%) of genes in pham
- Manual Annotations of this start: 2 of 381
- Called 100.0% of time when present
- Phage (with cluster) where this start called: KeAlii_12 (AZ1), Reedo_12 (AZ1),

Start 23:

- Found in 77 of 466 (16.5%) of genes in pham
- Manual Annotations of this start: 66 of 381
- Called 87.0% of time when present
- Phage (with cluster) where this start called: Aledel_10 (AK), AppleCider_14 (AK), AustinPowers_10 (AK), Beethoven_14 (AK), Bennie_10 (AK), BigMack_10 (AK), Bodacious_10 (AK), BrotherBLo_14 (AK), CallieOMalley_14 (AK), Canowicakte_14 (AK), Carpal_14 (AK), ChewChew_10 (AK), Cholula_14 (AK), Christian_10 (AK), CristinaYang_10 (AK), Dino_14 (AK), DrRobert_10 (AK), DreamTeam_10 (AK), Emotion_11 (AZ4), EstebanJulior_10 (AK), Eunoia_10 (AK), Fluke_14 (AK), Gisselle_10 (AK), Glenn_14 (AK), Graynor_14 (AK), HeadNerd_10 (AK), Huckleberry_10 (AK), HunterDalle_10 (AK), Immaculata_14 (AK), Jumboset_14 (AK), Kalizoi_14 (AK), Kittykat_10 (AK), Korra_14 (AK), Lasagna_10 (AK), Lennox_10 (AK), LilStuart_10 (AK), Litotes_14 (AK), Lucy_10 (AK), Makoto_10 (AK), MamaPearl_10 (AK), MeganNoll_14 (AK), Moki_10 (AK), MrGloopy_14 (AK), Nancia_10 (AK), OMalley_10 (AK), OurGirlNessie_10 (AK), PartyCup_14 (AK), PitaDog_10 (AK), Potatoes_14 (AK), Preamble_10 (AK), Pterodactyl_10 (AK), RAP15_14 (AK), Rivovina_10 (AK), Riverdale_14 (AK), Rozby_14 (AK), Savage2526_14 (AK), Scuttle_14 (AK), Supakev_10 (AK), Suppi_14 (AK), TattModd_14 (AK), Urla_10 (AK), Vallejo_14 (AK), Vulture_10 (AK), Wawa_14 (AK), Wayne_14 (AK), WonderBoy_10 (AK), Zorro_14 (AK),

Start 26:

- Found in 2 of 466 (0.4%) of genes in pham
- No Manual Annotations of this start.
- Called 100.0% of time when present
- Phage (with cluster) where this start called: PFR1_09 (BX), PFR2_09 (BX),

Start 27:

- Found in 37 of 466 (7.9%) of genes in pham
- Manual Annotations of this start: 32 of 381
- Called 91.9% of time when present
- Phage (with cluster) where this start called: AbbeyMikolon_11 (BL), Albanese_14 (AK), Asapag_12 (DN1), BENtherdunthat_12 (DN1), BotCity_12 (DN), Budski_12 (DN), CheeseTouch_12 (DN1), Frickyeah_12 (DN1), Getalong_12 (DN1), GreenHearts_14 (AK), Greenhouse_14 (AK), Holliday_12 (DN1), Horus_12 (DN1), Huntingdon_14 (AK), Joann_14 (AK), Kamaru_12 (DN1), Kenna_12 (DN1), Lakshmi_14 (AK), Leroy_12 (DN1), LitninMcQueen_12 (DN1), Lutum_12 (DN1), Malisha_12 (DN), Misaeng_14 (AK), Nesbitt_11 (BL), Nubia_14 (AK), Oxynfrius_14 (AK), Periwinkle_12 (DN1), Phabuloso_12 (DN1), Phistory_12 (DN1), RcigaStruga_14 (AK), ShawBrad_12 (DN1), Spooky_12 (DN2), Squiddly_13 (DN2),

Whitney_12 (DN1),

Start 29:

- Found in 5 of 466 (1.1%) of genes in pham
- No Manual Annotations of this start.
- Called 20.0% of time when present
- Phage (with cluster) where this start called: SPB78_12 (BA),

Start 30:

- Found in 13 of 466 (2.8%) of genes in pham
- Manual Annotations of this start: 11 of 381
- Called 100.0% of time when present
- Phage (with cluster) where this start called: Apricot_12 (DN3), BearBQ_12 (DN), Birdsong_12 (DN), Crater_12 (DN3), Ecliptus_12 (DN), Gibbzilla_13 (FB), Kuwabara_12 (DN4), Lucky10_11 (DH), Morkie_11 (DH), MortyNRick_12 (DN), ODay_12 (DN), PhorbesPhlower_11 (DH), VWB_11 (BA),

Start 31:

- Found in 3 of 466 (0.6%) of genes in pham
- Manual Annotations of this start: 2 of 381
- Called 100.0% of time when present
- Phage (with cluster) where this start called: Elfy_10 (FP), Sleepyhead_12 (singleton), Spartoi_10 (singleton),

Start 32:

- Found in 7 of 466 (1.5%) of genes in pham
- Manual Annotations of this start: 1 of 381
- Called 28.6% of time when present
- Phage (with cluster) where this start called: LisoBros_11 (UNK), Shambre1_12 (singleton),

Start 33:

- Found in 23 of 466 (4.9%) of genes in pham
- Manual Annotations of this start: 23 of 381
- Called 100.0% of time when present
- Phage (with cluster) where this start called: Angelique_13 (CY1), BeeGee_13 (CY5), Bradissa_13 (CY1), BritBrat_13 (CY2), Buldak_11 (EB), Cashline_13 (CY6), Confidence_13 (CY1), EMSquaredA_13 (CY1), EnalisNailo_13 (CY1), Floral_13 (CY1), Jablanski_13 (CY3), Lilas_13 (CY1), LonelyBoi_13 (CY7), Marteena_13 (CY1), Olliecat_11 (EB), Pollux_13 (CY1), Posh_13 (CY4), Pytheas_13 (CY3), Shayna_10 (EB), Squirrel_11 (EB), SunnyD_10 (EB), Teagster_10 (EB), Wrigley_13 (CY4),

Start 34:

- Found in 41 of 466 (8.8%) of genes in pham
- Manual Annotations of this start: 24 of 381
- Called 100.0% of time when present
- Phage (with cluster) where this start called: Agamoto_15 (FR), Alatato_10 (FB), AnnabelLee_13 (FR), Aoka_12 (FO), Audell_16 (FR), BrayBeast_11 (FB), CardboardBox_13 (FR), ChamoyPickle_13 (FR), ChipsNGuac_13 (FR), CliffHanger_12 (EB), CocoCinnamon_15 (FO), DS6A_15 (singleton), Eden_10 (EB), EvenBluerMoon_12 (FO), Ezurina_12 (FR), Franklin22_10 (EB), Gaia_9 (X), Gerri43_13 (FR), JanetJ_12 (FO), JeanClaude_11 (FB), Kumotta_12 (FB),

LastNadiia_16 (FR), LilSpotty_11 (singleton), Maja_11 (FO), Makima_14 (FR), MargaretKali_12 (FB), Mireles_13 (FR), Nebkiss_9 (X), Neuville_13 (FR), NoSwimming_13 (FO), Pigu_11 (FB), PrairieDogTown_12 (FO), Roberts_13 (FR), Rooter_11 (FB), Sarge_11 (FB), Scotia_13 (FO), Shoya_10 (FB), Stellammi_9 (UNK), Studio_13 (FR), TMaxx_13 (FR), TripleC_16 (FR),

Start 35:

- Found in 10 of 466 (2.1%) of genes in pham
- No Manual Annotations of this start.
- Called 10.0% of time when present
- Phage (with cluster) where this start called: AinMach_11 (AZ7),

Start 36:

- Found in 59 of 466 (12.7%) of genes in pham
- Manual Annotations of this start: 48 of 381
- Called 98.3% of time when present
- Phage (with cluster) where this start called: Abigail_11 (EB), Akino08_11 (EB), Albedo_11 (EB), Albright_11 (EB), AnnaLie_12 (EB), Arroyo_12 (EB), Avacadoman_11 (EB), AylexOG_12 (EB), BabyDaisy_12 (EB), BabyYoda_11 (EB), BaileyBlu_11 (FP), BelmontSKP_12 (EB), Bengal_11 (EB), BubbaBear_11 (EB), Burritobowl_11 (EB), CallinAllBarbz_11 (FP), CanFranMach_11 (EB), Cashington_11 (EB), CroZenni_11 (EB), CupcakePrincess_11 (EB), DickRichards_11 (EB), Doobus_11 (EB), Elva_12 (EB), Eula_11 (EB), Finalfrontier_12 (EB), GrimEater_12 (FP), Icarian_12 (EB), IndyLu_11 (EB), Jabb_11 (EB), Jankie_13 (FP), Johnathan_11 (EB), Jovita_11 (EB), Kate33_11 (EB), Kenzers_11 (EB), Lilo27_11 (EB), LimaBean_11 (EB), Loviatar_11 (EB), Lynlen_11 (EB), Milomuff_12 (EB), MsUbiquitous_11 (EB), Nicky22_12 (EB), Pecas_11 (EB), PhigPhack_11 (EB), Phisb_11 (EB), PondAmelia_14 (EB), QMacho_12 (EB), SanaSana_12 (EB), SansAfet_11 (EB), SarBear_11 (EB), SirBeanington_11 (EB), Slay_11 (EB), Softsoap_11 (EB), Solea_12 (EB), Stoor_11 (EB), Stromboli_11 (EB), Swervy_11 (EB), TukTuk_11 (EB), WalkingDead_11 (EB),

Start 37:

- Found in 17 of 466 (3.6%) of genes in pham
- Manual Annotations of this start: 14 of 381
- Called 88.2% of time when present
- Phage (with cluster) where this start called: AvGardian_11 (EB), Bachaco_11 (EB), Celaena_11 (EB), ChiliPepper_11 (EB), Didgeridoo_12 (EB), Dismas_11 (EB), FlameThrower_11 (EB), Kamdara_11 (EB), Katzastrophic_11 (EB), Kieran_11 (EB), Lahqtemish_11 (EB), PastaFagioli_11 (EB), Quenya_12 (EB), Rona_11 (EB), Sharkboy_11 (EB),

Start 39:

- Found in 22 of 466 (4.7%) of genes in pham
- Manual Annotations of this start: 11 of 381
- Called 50.0% of time when present
- Phage (with cluster) where this start called: Armstrong_10 (EB), BAjuniper_11 (EB), Bernstein_10 (EB), Brahms_10 (EB), Clayda5_10 (EB), Coltrane_10 (EB), DirtyBubble_11 (EB), Gack_10 (EB), Rollins_10 (EB), Skylord_10 (EB), Vitas_10 (EB),

Start 51:

- Found in 22 of 466 (4.7%) of genes in pham

- Manual Annotations of this start: 4 of 381
- Called 22.7% of time when present
- Phage (with cluster) where this start called: B22_12 (BW), Doucette_12 (BW), E6_13 (BW), G4_12 (BW), MrBoss_14 (AK),

Summary by clusters:

There are 39 clusters represented in this pham: DN, FP, FR, BA, DH, CY2, BL, CY1, FB, BW, BX, FO, AZ, CY3, DN4, DN1, DN3, DN2, CY6, AS3, AS2, AS1, CY7, EH, CY5, CY4, AK, EB, Y, X, singleton, UNK, AZ1, AZ2, AZ3, AZ4, AZ5, AZ6, AZ7,

Info for manual annotations of cluster AK:

- Start number 20 was manually annotated 9 times for cluster AK.
- Start number 23 was manually annotated 65 times for cluster AK.
- Start number 27 was manually annotated 10 times for cluster AK.

Info for manual annotations of cluster AS1:

- Start number 20 was manually annotated 13 times for cluster AS1.

Info for manual annotations of cluster AS2:

- Start number 20 was manually annotated 17 times for cluster AS2.

Info for manual annotations of cluster AS3:

- Start number 20 was manually annotated 14 times for cluster AS3.

Info for manual annotations of cluster AZ1:

- Start number 19 was manually annotated 37 times for cluster AZ1.
- Start number 20 was manually annotated 7 times for cluster AZ1.
- Start number 22 was manually annotated 2 times for cluster AZ1.

Info for manual annotations of cluster AZ2:

- Start number 19 was manually annotated 2 times for cluster AZ2.
- Start number 20 was manually annotated 1 time for cluster AZ2.

Info for manual annotations of cluster AZ3:

- Start number 20 was manually annotated 2 times for cluster AZ3.

Info for manual annotations of cluster AZ4:

- Start number 21 was manually annotated 4 times for cluster AZ4.
- Start number 23 was manually annotated 1 time for cluster AZ4.

Info for manual annotations of cluster AZ5:

- Start number 18 was manually annotated 16 times for cluster AZ5.

Info for manual annotations of cluster AZ6:

- Start number 20 was manually annotated 1 time for cluster AZ6.

Info for manual annotations of cluster BL:

- Start number 15 was manually annotated 1 time for cluster BL.
- Start number 27 was manually annotated 2 times for cluster BL.

Info for manual annotations of cluster BW:

- Start number 51 was manually annotated 4 times for cluster BW.

Info for manual annotations of cluster CY1:

- Start number 33 was manually annotated 9 times for cluster CY1.

Info for manual annotations of cluster CY2:

- Start number 33 was manually annotated 1 time for cluster CY2.

Info for manual annotations of cluster CY3:

- Start number 33 was manually annotated 2 times for cluster CY3.

Info for manual annotations of cluster CY4:

- Start number 33 was manually annotated 2 times for cluster CY4.

Info for manual annotations of cluster CY5:

- Start number 33 was manually annotated 1 time for cluster CY5.

Info for manual annotations of cluster CY6:

- Start number 33 was manually annotated 1 time for cluster CY6.

Info for manual annotations of cluster CY7:

- Start number 33 was manually annotated 1 time for cluster CY7.

Info for manual annotations of cluster DH:

- Start number 30 was manually annotated 3 times for cluster DH.

Info for manual annotations of cluster DN:

- Start number 27 was manually annotated 3 times for cluster DN.
- Start number 30 was manually annotated 5 times for cluster DN.

Info for manual annotations of cluster DN1:

- Start number 27 was manually annotated 15 times for cluster DN1.

Info for manual annotations of cluster DN2:

- Start number 27 was manually annotated 2 times for cluster DN2.

Info for manual annotations of cluster DN3:

- Start number 30 was manually annotated 2 times for cluster DN3.

Info for manual annotations of cluster DN4:

- Start number 30 was manually annotated 1 time for cluster DN4.

Info for manual annotations of cluster EB:

- Start number 33 was manually annotated 6 times for cluster EB.
- Start number 34 was manually annotated 3 times for cluster EB.
- Start number 36 was manually annotated 46 times for cluster EB.
- Start number 37 was manually annotated 14 times for cluster EB.
- Start number 39 was manually annotated 11 times for cluster EB.

Info for manual annotations of cluster EH:

- Start number 18 was manually annotated 1 time for cluster EH.
- Start number 19 was manually annotated 7 times for cluster EH.
- Start number 20 was manually annotated 5 times for cluster EH.

Info for manual annotations of cluster FB:

- Start number 34 was manually annotated 6 times for cluster FB.

Info for manual annotations of cluster FO:

- Start number 34 was manually annotated 8 times for cluster FO.

Info for manual annotations of cluster FP:

- Start number 36 was manually annotated 2 times for cluster FP.

Info for manual annotations of cluster FR:

- Start number 34 was manually annotated 3 times for cluster FR.

Info for manual annotations of cluster X:

- Start number 34 was manually annotated 2 times for cluster X.

Info for manual annotations of cluster Y:

- Start number 17 was manually annotated 4 times for cluster Y.
- Start number 19 was manually annotated 1 time for cluster Y.

Gene Information:

Gene: AEgle_12 Start: 9049, Stop: 9459, Start Num: 19

Candidate Starts for AEgle_12:

(Start: 19 @9049 has 48 MA's), (43, 9094), (55, 9118), (149, 9379), (158, 9412),

Gene: AGrandiflora_12 Start: 9036, Stop: 9449, Start Num: 19

Candidate Starts for AGrandiflora_12:

(Start: 19 @9036 has 48 MA's), (55, 9105), (112, 9255), (149, 9366), (158, 9399),

Gene: AbbeyMikolon_11 Start: 7783, Stop: 8178, Start Num: 27

Candidate Starts for AbbeyMikolon_11:

(24, 7780), (Start: 27 @7783 has 32 MA's), (Start: 32 @7795 has 1 MA's), (48, 7816), (Start: 51 @7822 has 4 MA's), (53, 7828), (58, 7843), (70, 7864), (77, 7888), (109, 7957), (129, 8029), (132, 8035), (143, 8062), (151, 8092), (161, 8140),

Gene: Abidatro_12 Start: 8321, Stop: 8764, Start Num: 20

Candidate Starts for Abidatro_12:

(Start: 20 @8321 has 69 MA's), (45, 8363), (68, 8417), (86, 8471), (88, 8474), (100, 8507), (128, 8606), (138, 8633), (146, 8657), (148, 8663), (150, 8672),

Gene: Abigail_11 Start: 8030, Stop: 8425, Start Num: 36

Candidate Starts for Abigail_11:

(6, 7904), (Start: 36 @8030 has 48 MA's), (57, 8069), (72, 8096), (101, 8174), (133, 8273), (143, 8306), (166, 8399),

Gene: AceofSpades_10 Start: 7298, Stop: 7693, Start Num: 21

Candidate Starts for AceofSpades_10:
(Start: 21 @7298 has 4 MA's), (109, 7490),

Gene: Adolin_12 Start: 9024, Stop: 9440, Start Num: 20
Candidate Starts for Adolin_12:
(Start: 20 @9024 has 69 MA's), (111, 9240),

Gene: AdoptaAdorbs_11 Start: 7902, Stop: 8342, Start Num: 20
Candidate Starts for AdoptaAdorbs_11:
(Start: 20 @7902 has 69 MA's), (50, 7953), (88, 8055), (89, 8058), (103, 8094), (105, 8100), (111, 8115), (128, 8187), (138, 8214), (163, 8313), (166, 8319), (168, 8331),

Gene: Adumb2043_12 Start: 9048, Stop: 9458, Start Num: 19
Candidate Starts for Adumb2043_12:
(Start: 19 @9048 has 48 MA's), (43, 9093), (55, 9117), (149, 9378), (158, 9411),

Gene: Agamoto_15 Start: 10788, Stop: 11180, Start Num: 34
Candidate Starts for Agamoto_15:
(Start: 34 @10788 has 24 MA's), (47, 10800), (81, 10890), (85, 10902), (112, 10974), (128, 11031), (168, 11172),

Gene: AinMach_11 Start: 8183, Stop: 8566, Start Num: 35
Candidate Starts for AinMach_11:
(Start: 19 @8150 has 48 MA's), (Start: 20 @8153 has 69 MA's), (35, 8183), (43, 8195), (162, 8537),

Gene: Akino08_11 Start: 8216, Stop: 8611, Start Num: 36
Candidate Starts for Akino08_11:
(6, 8090), (Start: 36 @8216 has 48 MA's), (Start: 39 @8219 has 11 MA's), (71, 8279), (149, 8510), (156, 8543), (159, 8564),

Gene: Alatato_10 Start: 7192, Stop: 7572, Start Num: 34
Candidate Starts for Alatato_10:
(Start: 34 @7192 has 24 MA's), (64, 7252), (74, 7270), (109, 7357), (111, 7363), (139, 7459), (141, 7465), (161, 7534),

Gene: Albanese_14 Start: 10476, Stop: 10886, Start Num: 27
Candidate Starts for Albanese_14:
(Start: 27 @10476 has 32 MA's), (93, 10620), (96, 10629), (97, 10632), (109, 10662), (111, 10668), (118, 10701), (158, 10824), (163, 10848),

Gene: Albedo_11 Start: 7905, Stop: 8300, Start Num: 36
Candidate Starts for Albedo_11:
(6, 7779), (Start: 36 @7905 has 48 MA's), (57, 7944), (101, 8049), (133, 8148), (143, 8181), (166, 8274),

Gene: Albright_11 Start: 7911, Stop: 8306, Start Num: 36
Candidate Starts for Albright_11:
(6, 7785), (Start: 36 @7911 has 48 MA's), (72, 7977), (101, 8055), (133, 8154), (143, 8187), (166, 8280),

Gene: Aledel_10 Start: 7551, Stop: 7982, Start Num: 23
Candidate Starts for Aledel_10:

(Start: 20 @7545 has 69 MA's), (Start: 23 @7551 has 66 MA's), (35, 7572), (71, 7644), (93, 7701), (97, 7713), (100, 7722), (110, 7746), (158, 7905),

Gene: AlexMinion_11 Start: 7928, Stop: 8371, Start Num: 20

Candidate Starts for AlexMinion_11:

(Start: 15 @7916 has 1 MA's), (Start: 20 @7928 has 69 MA's), (73, 8036), (89, 8084), (103, 8120), (105, 8126), (128, 8213), (138, 8240), (163, 8339), (166, 8345), (168, 8357),

Gene: Amanises_13 Start: 8480, Stop: 8932, Start Num: 15

Candidate Starts for Amanises_13:

(Start: 15 @8480 has 1 MA's), (Start: 20 @8492 has 69 MA's), (66, 8582), (80, 8624), (86, 8642), (88, 8645), (103, 8684), (128, 8777), (138, 8804), (146, 8828), (155, 8864), (163, 8900),

Gene: Amelia_13 Start: 8497, Stop: 8940, Start Num: 20

Candidate Starts for Amelia_13:

(Start: 20 @8497 has 69 MA's), (66, 8587), (68, 8593), (86, 8647), (88, 8650), (103, 8689), (138, 8809), (146, 8833), (163, 8905), (166, 8911),

Gene: AmiCi24_11 Start: 7902, Stop: 8342, Start Num: 20

Candidate Starts for AmiCi24_11:

(Start: 20 @7902 has 69 MA's), (50, 7953), (88, 8055), (89, 8058), (103, 8094), (105, 8100), (111, 8115), (128, 8187), (138, 8214), (163, 8313), (166, 8319), (168, 8331),

Gene: Amphitrite_11 Start: 7900, Stop: 8340, Start Num: 20

Candidate Starts for Amphitrite_11:

(Start: 20 @7900 has 69 MA's), (50, 7951), (88, 8053), (89, 8056), (103, 8092), (105, 8098), (111, 8113), (128, 8185), (138, 8212), (163, 8311), (166, 8317), (168, 8329),

Gene: Amploria_12 Start: 9048, Stop: 9458, Start Num: 19

Candidate Starts for Amploria_12:

(Start: 19 @9048 has 48 MA's), (43, 9093), (55, 9117), (149, 9378), (158, 9411),

Gene: Amyev_12 Start: 9064, Stop: 9477, Start Num: 19

Candidate Starts for Amyev_12:

(Start: 19 @9064 has 48 MA's), (43, 9109), (112, 9283), (149, 9394), (158, 9427),

Gene: Andrew_12 Start: 8281, Stop: 8724, Start Num: 20

Candidate Starts for Andrew_12:

(Start: 20 @8281 has 69 MA's), (50, 8332), (66, 8371), (70, 8380), (86, 8431), (88, 8434), (89, 8437), (103, 8473), (105, 8479), (138, 8593), (143, 8608), (163, 8692), (166, 8698), (168, 8710),

Gene: Angelique_13 Start: 8261, Stop: 8653, Start Num: 33

Candidate Starts for Angelique_13:

(Start: 33 @8261 has 23 MA's), (115, 8465),

Gene: AnnaLie_12 Start: 8320, Stop: 8715, Start Num: 36

Candidate Starts for AnnaLie_12:

(6, 8194), (Start: 36 @8320 has 48 MA's), (57, 8359), (72, 8386), (101, 8464), (133, 8563), (143, 8596), (166, 8689),

Gene: AnnabelLee_13 Start: 7727, Stop: 8119, Start Num: 34

Candidate Starts for AnnabelLee_13:

(Start: 34 @7727 has 24 MA's), (80, 7826), (81, 7829), (100, 7880), (101, 7883), (128, 7970), (129, 7973), (161, 8087), (168, 8111),

Gene: Antrice_12 Start: 8237, Stop: 8680, Start Num: 20

Candidate Starts for Antrice_12:

(Start: 15 @8225 has 1 MA's), (Start: 20 @8237 has 69 MA's), (89, 8393), (111, 8450), (123, 8507), (124, 8510), (146, 8573), (148, 8579), (155, 8612), (163, 8648), (168, 8666),

Gene: Aoka_12 Start: 8710, Stop: 9090, Start Num: 34

Candidate Starts for Aoka_12:

(Start: 34 @8710 has 24 MA's), (120, 8923), (124, 8935), (149, 9007), (153, 9022),

Gene: AppleCider_14 Start: 10411, Stop: 10824, Start Num: 23

Candidate Starts for AppleCider_14:

(Start: 23 @10411 has 66 MA's), (Start: 51 @10456 has 4 MA's), (93, 10558), (158, 10762),

Gene: Apricot_12 Start: 7390, Stop: 7773, Start Num: 30

Candidate Starts for Apricot_12:

(Start: 30 @7390 has 11 MA's), (58, 7444), (61, 7450), (66, 7462), (76, 7486), (143, 7669), (167, 7759),

Gene: Armstrong_10 Start: 7692, Stop: 8081, Start Num: 39

Candidate Starts for Armstrong_10:

(Start: 39 @7692 has 11 MA's), (101, 7833), (109, 7851), (154, 8004), (156, 8013), (160, 8037), (168, 8067),

Gene: Arroyo_12 Start: 8381, Stop: 8776, Start Num: 36

Candidate Starts for Arroyo_12:

(6, 8255), (Start: 36 @8381 has 48 MA's), (72, 8447), (101, 8525), (133, 8624), (143, 8657), (166, 8750),

Gene: Asa16_12 Start: 9018, Stop: 9428, Start Num: 19

Candidate Starts for Asa16_12:

(Start: 19 @9018 has 48 MA's), (55, 9087), (109, 9225), (112, 9237), (149, 9348), (158, 9381),

Gene: Asapag_12 Start: 7041, Stop: 7451, Start Num: 27

Candidate Starts for Asapag_12:

(4, 6912), (8, 6957), (9, 6963), (10, 6969), (12, 6987), (Start: 27 @7041 has 32 MA's), (46, 7068), (67, 7113), (70, 7119), (85, 7173), (100, 7212), (103, 7218), (111, 7239), (124, 7290), (128, 7302),

Gene: Ascela_12 Start: 9053, Stop: 9463, Start Num: 19

Candidate Starts for Ascela_12:

(Start: 19 @9053 has 48 MA's), (55, 9122), (112, 9272), (149, 9383), (158, 9416),

Gene: Ashes_12 Start: 8547, Stop: 8966, Start Num: 18

Candidate Starts for Ashes_12:

(Start: 18 @8547 has 17 MA's), (41, 8589), (144, 8871),

Gene: Atlantica_11 Start: 7902, Stop: 8342, Start Num: 20

Candidate Starts for Atlantica_11:

(Start: 20 @7902 has 69 MA's), (50, 7953), (88, 8055), (89, 8058), (103, 8094), (105, 8100), (111, 8115), (128, 8187), (138, 8214), (163, 8313), (166, 8319), (168, 8331),

Gene: Audell_16 Start: 11067, Stop: 11459, Start Num: 34

Candidate Starts for Audell_16:

(Start: 34 @11067 has 24 MA's), (67, 11130), (101, 11223), (112, 11253), (127, 11307), (128, 11310), (129, 11313), (143, 11349), (168, 11451),

Gene: AuntGwenStacy_18 Start: 11997, Stop: 12434, Start Num: 19

Candidate Starts for AuntGwenStacy_18:

(Start: 17 @11994 has 4 MA's), (Start: 19 @11997 has 48 MA's), (57, 12075), (61, 12084), (63, 12090), (66, 12096), (96, 12174), (116, 12240), (128, 12276), (152, 12351), (161, 12390),

Gene: AustinPowers_10 Start: 7552, Stop: 7983, Start Num: 23

Candidate Starts for AustinPowers_10:

(Start: 20 @7546 has 69 MA's), (Start: 23 @7552 has 66 MA's), (35, 7573), (71, 7645), (97, 7714), (100, 7723), (110, 7747), (158, 7906),

Gene: AvGardian_11 Start: 7970, Stop: 8365, Start Num: 37

Candidate Starts for AvGardian_11:

(Start: 37 @7970 has 14 MA's), (71, 8033), (101, 8114), (124, 8189), (133, 8213), (143, 8246), (149, 8264), (166, 8339),

Gene: Avocadoman_11 Start: 7969, Stop: 8364, Start Num: 36

Candidate Starts for Avocadoman_11:

(Start: 36 @7969 has 48 MA's), (57, 8008), (72, 8035), (101, 8113), (133, 8212), (143, 8245), (166, 8338),

Gene: AylexOG_12 Start: 8256, Stop: 8651, Start Num: 36

Candidate Starts for AylexOG_12:

(6, 8130), (Start: 36 @8256 has 48 MA's), (57, 8295), (72, 8322), (101, 8400), (143, 8532), (166, 8625),

Gene: Azaz_11 Start: 7953, Stop: 8393, Start Num: 20

Candidate Starts for Azaz_11:

(Start: 20 @7953 has 69 MA's), (88, 8106), (89, 8109), (103, 8145), (105, 8151), (111, 8166), (128, 8238), (138, 8265), (163, 8364), (166, 8370), (168, 8382),

Gene: B22_12 Start: 7687, Stop: 8055, Start Num: 51

Candidate Starts for B22_12:

(2, 7486), (Start: 51 @7687 has 4 MA's), (75, 7744), (94, 7795), (129, 7906), (132, 7912), (135, 7924),

Gene: BAjuniper_11 Start: 7857, Stop: 8243, Start Num: 39

Candidate Starts for BAjuniper_11:

(3, 7680), (Start: 39 @7857 has 11 MA's), (101, 7995), (108, 8010), (148, 8139), (156, 8175),

Gene: BENtherdunthat_12 Start: 7041, Stop: 7451, Start Num: 27

Candidate Starts for BENtherdunthat_12:

(4, 6912), (8, 6957), (9, 6963), (10, 6969), (12, 6987), (Start: 27 @7041 has 32 MA's), (46, 7068), (67, 7113), (70, 7119), (85, 7173), (100, 7212), (103, 7218), (111, 7239), (124, 7290), (128, 7302),

Gene: Babushka_11 Start: 7950, Stop: 8390, Start Num: 20

Candidate Starts for Babushka_11:

(Start: 20 @7950 has 69 MA's), (88, 8103), (89, 8106), (103, 8142), (105, 8148), (109, 8157), (128, 8235), (138, 8262), (163, 8361), (166, 8367), (168, 8379),

Gene: BabyDaisy_12 Start: 8133, Stop: 8531, Start Num: 36

Candidate Starts for BabyDaisy_12:

(Start: 36 @8133 has 48 MA's), (133, 8379), (159, 8484),

Gene: BabyYoda_11 Start: 8162, Stop: 8557, Start Num: 36

Candidate Starts for BabyYoda_11:

(6, 8036), (Start: 36 @8162 has 48 MA's), (Start: 39 @8165 has 11 MA's), (71, 8225), (136, 8420), (149, 8456), (156, 8489), (159, 8510),

Gene: Bachaco_11 Start: 8051, Stop: 8449, Start Num: 37

Candidate Starts for Bachaco_11:

(1, 7853), (3, 7877), (5, 7913), (Start: 37 @8051 has 14 MA's), (Start: 51 @8072 has 4 MA's), (143, 8330), (149, 8348), (156, 8381),

Gene: BaileyBlu_11 Start: 6789, Stop: 7178, Start Num: 36

Candidate Starts for BaileyBlu_11:

(Start: 36 @6789 has 48 MA's), (38, 6792), (108, 6951), (128, 7023), (132, 7032),

Gene: Barnstormer_10 Start: 8216, Stop: 8632, Start Num: 20

Candidate Starts for Barnstormer_10:

(Start: 20 @8216 has 69 MA's), (118, 8456), (138, 8513),

Gene: Basilisk_12 Start: 8645, Stop: 9088, Start Num: 20

Candidate Starts for Basilisk_12:

(7, 8570), (Start: 20 @8645 has 69 MA's), (45, 8687), (54, 8705), (68, 8741), (86, 8795), (88, 8798), (103, 8837), (114, 8891), (128, 8930), (138, 8957), (146, 8981), (148, 8987),

Gene: BearBQ_12 Start: 7390, Stop: 7773, Start Num: 30

Candidate Starts for BearBQ_12:

(Start: 30 @7390 has 11 MA's), (58, 7444), (61, 7450), (66, 7462), (76, 7486), (143, 7669), (167, 7759),

Gene: Beaupre_12 Start: 8548, Stop: 8967, Start Num: 18

Candidate Starts for Beaupre_12:

(Start: 18 @8548 has 17 MA's), (41, 8590), (111, 8767), (144, 8872),

Gene: Bedetta_13 Start: 8497, Stop: 8940, Start Num: 20

Candidate Starts for Bedetta_13:

(Start: 20 @8497 has 69 MA's), (66, 8587), (68, 8593), (86, 8647), (88, 8650), (103, 8689), (138, 8809), (146, 8833), (163, 8905), (166, 8911),

Gene: BeeGee_13 Start: 8263, Stop: 8649, Start Num: 33

Candidate Starts for BeeGee_13:

(11, 8182), (Start: 33 @8263 has 23 MA's),

Gene: Beethoven_14 Start: 10371, Stop: 10784, Start Num: 23

Candidate Starts for Beethoven_14:

(Start: 23 @10371 has 66 MA's), (86, 10506), (93, 10521), (110, 10566), (120, 10608), (158, 10725),

Gene: BelmontSKP_12 Start: 8320, Stop: 8715, Start Num: 36

Candidate Starts for BelmontSKP_12:

(6, 8194), (Start: 36 @8320 has 48 MA's), (57, 8359), (72, 8386), (101, 8464), (133, 8563), (143, 8596), (166, 8689),

Gene: Bengal_11 Start: 7911, Stop: 8306, Start Num: 36

Candidate Starts for Bengal_11:

(6, 7785), (Start: 36 @7911 has 48 MA's), (57, 7950), (72, 7977), (133, 8154), (143, 8187), (166, 8280),

Gene: Bennie_10 Start: 7516, Stop: 7926, Start Num: 23

Candidate Starts for Bennie_10:

(Start: 23 @7516 has 66 MA's), (86, 7648), (93, 7663), (110, 7708), (111, 7711), (120, 7750), (158, 7867),

Gene: Bernstein_10 Start: 7752, Stop: 8141, Start Num: 39

Candidate Starts for Bernstein_10:

(Start: 39 @7752 has 11 MA's), (101, 7893), (109, 7911), (154, 8064), (156, 8073), (160, 8097), (168, 8127),

Gene: Berrie_12 Start: 9020, Stop: 9430, Start Num: 19

Candidate Starts for Berrie_12:

(Start: 19 @9020 has 48 MA's), (62, 9107), (112, 9239), (149, 9350), (158, 9383),

Gene: Bible12_13 Start: 8500, Stop: 8943, Start Num: 20

Candidate Starts for Bible12_13:

(Start: 20 @8500 has 69 MA's), (66, 8590), (68, 8596), (86, 8650), (88, 8653), (103, 8692), (138, 8812), (146, 8836), (163, 8908), (166, 8914),

Gene: BigMack_10 Start: 7516, Stop: 7926, Start Num: 23

Candidate Starts for BigMack_10:

(Start: 23 @7516 has 66 MA's), (86, 7648), (93, 7663), (110, 7708), (120, 7750), (158, 7867),

Gene: Bipper_18 Start: 12080, Stop: 12517, Start Num: 17

Candidate Starts for Bipper_18:

(Start: 17 @12080 has 4 MA's), (Start: 19 @12083 has 48 MA's), (53, 12146), (57, 12158), (61, 12167), (66, 12179), (89, 12239), (111, 12296), (116, 12323), (119, 12332), (129, 12362), (148, 12419), (157, 12449), (161, 12473),

Gene: Birdsong_12 Start: 7390, Stop: 7773, Start Num: 30

Candidate Starts for Birdsong_12:

(Start: 30 @7390 has 11 MA's), (58, 7444), (61, 7450), (66, 7462), (76, 7486), (143, 7669), (167, 7759),

Gene: Bodacious_10 Start: 7514, Stop: 7924, Start Num: 23

Candidate Starts for Bodacious_10:

(Start: 23 @7514 has 66 MA's), (72, 7607), (86, 7646), (93, 7661), (110, 7706), (120, 7748), (127, 7769), (158, 7865),

Gene: BotCity_12 Start: 7039, Stop: 7449, Start Num: 27

Candidate Starts for BotCity_12:

(4, 6910), (8, 6955), (9, 6961), (10, 6967), (12, 6985), (Start: 27 @7039 has 32 MA's), (46, 7066), (67, 7111), (70, 7117), (85, 7171), (100, 7210), (103, 7216), (111, 7237), (124, 7288), (128, 7300),

Gene: Bradissa_13 Start: 8267, Stop: 8653, Start Num: 33

Candidate Starts for Bradissa_13:

(Start: 33 @8267 has 23 MA's), (62, 8324),

Gene: Brahms_10 Start: 7692, Stop: 8081, Start Num: 39

Candidate Starts for Brahms_10:

(Start: 39 @7692 has 11 MA's), (101, 7833), (109, 7851), (154, 8004), (156, 8013), (160, 8037), (168, 8067),

Gene: BrayBeast_11 Start: 7602, Stop: 7979, Start Num: 34

Candidate Starts for BrayBeast_11:

(Start: 34 @7602 has 24 MA's), (64, 7659), (89, 7716), (99, 7743), (109, 7764), (111, 7770), (141, 7872), (153, 7908), (161, 7941),

Gene: BritBrat_13 Start: 8269, Stop: 8655, Start Num: 33

Candidate Starts for BritBrat_13:

(Start: 33 @8269 has 23 MA's), (62, 8326),

Gene: BrotherBLo_14 Start: 10378, Stop: 10791, Start Num: 23

Candidate Starts for BrotherBLo_14:

(Start: 23 @10378 has 66 MA's), (86, 10513), (93, 10528), (110, 10573), (120, 10615), (158, 10732),

Gene: Brynnie_12 Start: 8457, Stop: 8900, Start Num: 20

Candidate Starts for Brynnie_12:

(Start: 20 @8457 has 69 MA's), (45, 8499), (68, 8553), (86, 8607), (88, 8610), (103, 8649), (114, 8703), (128, 8742), (138, 8769), (146, 8793), (148, 8799),

Gene: BubbaBear_11 Start: 7905, Stop: 8300, Start Num: 36

Candidate Starts for BubbaBear_11:

(Start: 36 @7905 has 48 MA's), (57, 7944), (101, 8049), (133, 8148), (143, 8181), (166, 8274),

Gene: Budski_12 Start: 7046, Stop: 7438, Start Num: 27

Candidate Starts for Budski_12:

(4, 6917), (8, 6962), (9, 6968), (10, 6974), (12, 6992), (14, 7010), (Start: 27 @7046 has 32 MA's), (46, 7073), (67, 7118), (70, 7124), (75, 7136), (85, 7160), (100, 7199), (103, 7205), (109, 7220), (111, 7226), (124, 7277), (128, 7289), (149, 7343),

Gene: Buldak_11 Start: 8189, Stop: 8584, Start Num: 33

Candidate Starts for Buldak_11:

(Start: 33 @8189 has 23 MA's), (91, 8306), (100, 8333), (101, 8336), (126, 8414), (137, 8450), (140, 8459), (156, 8516), (160, 8540),

Gene: Burritobowl_11 Start: 7938, Stop: 8333, Start Num: 36

Candidate Starts for Burritobowl_11:

(6, 7812), (Start: 36 @7938 has 48 MA's), (57, 7977), (72, 8004), (101, 8082), (133, 8181), (143, 8214), (166, 8307),

Gene: CallieOMalley_14 Start: 10411, Stop: 10824, Start Num: 23

Candidate Starts for CallieOMalley_14:

(Start: 23 @10411 has 66 MA's), (Start: 51 @10456 has 4 MA's), (93, 10558), (158, 10762),

Gene: CallinAllBarbz_11 Start: 6799, Stop: 7188, Start Num: 36

Candidate Starts for CallinAllBarbz_11:

(Start: 36 @6799 has 48 MA's), (38, 6802), (108, 6961), (132, 7042), (142, 7069),

Gene: Camara_11 Start: 7903, Stop: 8343, Start Num: 20

Candidate Starts for Camara_11:

(Start: 20 @7903 has 69 MA's), (50, 7954), (88, 8056), (89, 8059), (103, 8095), (105, 8101), (111, 8116), (128, 8188), (138, 8215), (163, 8314), (166, 8320), (168, 8332),

Gene: CanFranMach_11 Start: 7928, Stop: 8323, Start Num: 36

Candidate Starts for CanFranMach_11:

(Start: 36 @7928 has 48 MA's), (72, 7994), (101, 8072), (124, 8147), (143, 8204), (166, 8297),

Gene: Canowicakte_14 Start: 10446, Stop: 10859, Start Num: 23

Candidate Starts for Canowicakte_14:

(Start: 23 @10446 has 66 MA's), (Start: 51 @10491 has 4 MA's), (93, 10593), (127, 10701), (158, 10797),

Gene: Cappuccino_12 Start: 8456, Stop: 8875, Start Num: 18

Candidate Starts for Cappuccino_12:

(Start: 18 @8456 has 17 MA's), (41, 8498), (144, 8780),

Gene: CardboardBox_13 Start: 7727, Stop: 8119, Start Num: 34

Candidate Starts for CardboardBox_13:

(Start: 34 @7727 has 24 MA's), (80, 7826), (81, 7829), (100, 7880), (101, 7883), (128, 7970), (129, 7973), (161, 8087), (168, 8111),

Gene: Caron_10 Start: 8244, Stop: 8660, Start Num: 20

Candidate Starts for Caron_10:

(Start: 20 @8244 has 69 MA's), (118, 8484),

Gene: Carpal_14 Start: 10378, Stop: 10791, Start Num: 23

Candidate Starts for Carpal_14:

(Start: 23 @10378 has 66 MA's), (86, 10513), (93, 10528), (110, 10573), (120, 10615), (158, 10732),

Gene: Cashington_11 Start: 7928, Stop: 8323, Start Num: 36

Candidate Starts for Cashington_11:

(6, 7802), (Start: 36 @7928 has 48 MA's), (57, 7967), (72, 7994), (101, 8072), (133, 8171), (143, 8204), (166, 8297),

Gene: Cashline_13 Start: 8116, Stop: 8508, Start Num: 33

Candidate Starts for Cashline_13:

(11, 8035), (Start: 33 @8116 has 23 MA's),

Gene: Cassia_12 Start: 9139, Stop: 9552, Start Num: 19

Candidate Starts for Cassia_12:

(Start: 19 @9139 has 48 MA's), (62, 9226), (109, 9346), (112, 9358), (149, 9469), (158, 9502),

Gene: Celaena_11 Start: 7988, Stop: 8386, Start Num: 37

Candidate Starts for Celaena_11:

(5, 7850), (Start: 18 @7952 has 17 MA's), (28, 7970), (Start: 37 @7988 has 14 MA's), (Start: 51 @8009 has 4 MA's), (143, 8267), (149, 8285), (156, 8318),

Gene: Cen1621_10 Start: 7355, Stop: 7771, Start Num: 19

Candidate Starts for Cen1621_10:

(Start: 19 @7355 has 48 MA's), (158, 7724), (162, 7745),

Gene: ChamoyPickle_13 Start: 7727, Stop: 8119, Start Num: 34

Candidate Starts for ChamoyPickle_13:

(Start: 34 @7727 has 24 MA's), (80, 7826), (81, 7829), (100, 7880), (101, 7883), (128, 7970), (129, 7973), (161, 8087), (168, 8111),

Gene: CheeseTouch_12 Start: 7046, Stop: 7438, Start Num: 27

Candidate Starts for CheeseTouch_12:

(4, 6917), (8, 6962), (9, 6968), (10, 6974), (12, 6992), (14, 7010), (Start: 27 @7046 has 32 MA's), (46, 7073), (67, 7118), (70, 7124), (75, 7136), (85, 7160), (100, 7199), (103, 7205), (109, 7220), (111, 7226), (124, 7277), (128, 7289), (149, 7343),

Gene: ChewChew_10 Start: 7513, Stop: 7923, Start Num: 23

Candidate Starts for ChewChew_10:

(Start: 23 @7513 has 66 MA's), (72, 7606), (86, 7645), (93, 7660), (110, 7705), (120, 7747), (127, 7768), (158, 7864),

Gene: Chickaboom_11 Start: 8002, Stop: 8445, Start Num: 20

Candidate Starts for Chickaboom_11:

(Start: 20 @8002 has 69 MA's), (45, 8044), (54, 8062), (68, 8098), (86, 8152), (88, 8155), (103, 8194), (114, 8248), (128, 8287), (138, 8314), (146, 8338), (148, 8344),

Gene: Chicken_12 Start: 8281, Stop: 8721, Start Num: 20

Candidate Starts for Chicken_12:

(Start: 20 @8281 has 69 MA's), (66, 8371), (68, 8377), (80, 8413), (86, 8431), (88, 8434), (103, 8473), (128, 8566), (138, 8593), (146, 8617), (155, 8653), (163, 8689),

Gene: ChiliPepper_11 Start: 8141, Stop: 8542, Start Num: 37

Candidate Starts for ChiliPepper_11:

(Start: 37 @8141 has 14 MA's), (101, 8291), (136, 8405), (156, 8474),

Gene: ChipsNGuac_13 Start: 7727, Stop: 8119, Start Num: 34

Candidate Starts for ChipsNGuac_13:

(Start: 34 @7727 has 24 MA's), (80, 7826), (81, 7829), (100, 7880), (101, 7883), (128, 7970), (129, 7973), (161, 8087), (168, 8111),

Gene: Cholula_14 Start: 10423, Stop: 10836, Start Num: 23

Candidate Starts for Cholula_14:

(Start: 23 @10423 has 66 MA's), (86, 10558), (93, 10573), (110, 10618), (120, 10660), (158, 10777),

Gene: Chridison_10 Start: 7546, Stop: 7983, Start Num: 20

Candidate Starts for Chridison_10:

(Start: 20 @7546 has 69 MA's), (Start: 23 @7552 has 66 MA's), (35, 7573), (71, 7645), (97, 7714), (100, 7723), (110, 7747), (158, 7906),

Gene: Christian_10 Start: 7514, Stop: 7924, Start Num: 23

Candidate Starts for Christian_10:

(Start: 23 @7514 has 66 MA's), (72, 7607), (86, 7646), (93, 7661), (110, 7706), (120, 7748), (127, 7769), (158, 7865),

Gene: Clayda5_10 Start: 7692, Stop: 8081, Start Num: 39

Candidate Starts for Clayda5_10:

(Start: 39 @7692 has 11 MA's), (101, 7833), (109, 7851), (154, 8004), (156, 8013), (160, 8037), (168, 8067),

Gene: CliffHanger_12 Start: 7883, Stop: 8278, Start Num: 34

Candidate Starts for CliffHanger_12:

(Start: 34 @7883 has 24 MA's), (96, 8015), (124, 8105), (140, 8153), (149, 8177), (160, 8234),

Gene: CocoCinnamon_15 Start: 8936, Stop: 9316, Start Num: 34

Candidate Starts for CocoCinnamon_15:

(Start: 34 @8936 has 24 MA's), (109, 9101), (111, 9107), (139, 9203), (141, 9209), (153, 9245), (161, 9278),

Gene: Coltrane_10 Start: 7692, Stop: 8081, Start Num: 39

Candidate Starts for Coltrane_10:

(Start: 39 @7692 has 11 MA's), (101, 7833), (109, 7851), (154, 8004), (156, 8013), (160, 8037), (168, 8067),

Gene: Colusalem_12 Start: 8336, Stop: 8779, Start Num: 20

Candidate Starts for Colusalem_12:

(Start: 20 @8336 has 69 MA's), (66, 8426), (68, 8432), (86, 8486), (88, 8489), (103, 8528), (138, 8648), (146, 8672), (163, 8744), (166, 8750),

Gene: Community_13 Start: 10099, Stop: 10509, Start Num: 19

Candidate Starts for Community_13:

(Start: 19 @10099 has 48 MA's), (43, 10144), (112, 10318), (149, 10429), (158, 10462),

Gene: Confidence_13 Start: 8263, Stop: 8649, Start Num: 33

Candidate Starts for Confidence_13:

(11, 8182), (Start: 33 @8263 has 23 MA's), (53, 8299), (62, 8320),

Gene: Coral_12 Start: 8336, Stop: 8779, Start Num: 20

Candidate Starts for Coral_12:

(Start: 20 @8336 has 69 MA's), (66, 8426), (68, 8432), (86, 8486), (88, 8489), (103, 8528), (138, 8648), (146, 8672), (163, 8744), (166, 8750),

Gene: Cote_13 Start: 8497, Stop: 8940, Start Num: 20

Candidate Starts for Cote_13:

(Start: 20 @8497 has 69 MA's), (66, 8587), (68, 8593), (86, 8647), (88, 8650), (103, 8689), (138, 8809), (146, 8833), (163, 8905), (166, 8911),

Gene: Cracklewink_18 Start: 12080, Stop: 12517, Start Num: 17

Candidate Starts for Cracklewink_18:

(Start: 17 @12080 has 4 MA's), (Start: 19 @12083 has 48 MA's), (53, 12146), (57, 12158), (61, 12167), (66, 12179), (89, 12239), (111, 12296), (116, 12323), (119, 12332), (129, 12362), (148, 12419), (157, 12449), (161, 12473),

Gene: Crater_12 Start: 7390, Stop: 7773, Start Num: 30

Candidate Starts for Crater_12:

(Start: 30 @7390 has 11 MA's), (58, 7444), (61, 7450), (66, 7462), (76, 7486), (143, 7669), (167, 7759),

Gene: Crewmate_13 Start: 9485, Stop: 9898, Start Num: 19

Candidate Starts for Crewmate_13:

(Start: 19 @9485 has 48 MA's), (55, 9554), (112, 9704), (149, 9815), (158, 9848),

Gene: CristinaYang_10 Start: 7514, Stop: 7924, Start Num: 23

Candidate Starts for CristinaYang_10:

(Start: 23 @7514 has 66 MA's), (72, 7607), (86, 7646), (93, 7661), (110, 7706), (120, 7748), (127, 7769), (158, 7865),

Gene: CroZenni_11 Start: 7911, Stop: 8306, Start Num: 36

Candidate Starts for CroZenni_11:

(6, 7785), (Start: 36 @7911 has 48 MA's), (72, 7977), (101, 8055), (133, 8154), (143, 8187), (166, 8280),

Gene: CupcakePrincess_11 Start: 7951, Stop: 8346, Start Num: 36

Candidate Starts for CupcakePrincess_11:

(6, 7825), (Start: 36 @7951 has 48 MA's), (57, 7990), (72, 8017), (101, 8095), (143, 8227), (166, 8320),

Gene: Cyan_12 Start: 9040, Stop: 9453, Start Num: 19

Candidate Starts for Cyan_12:

(Start: 19 @9040 has 48 MA's), (55, 9109), (112, 9259), (149, 9370), (158, 9403),

Gene: Cygnet_12 Start: 8279, Stop: 8722, Start Num: 20

Candidate Starts for Cygnet_12:

(Start: 20 @8279 has 69 MA's), (54, 8339), (57, 8348), (70, 8378), (86, 8429), (111, 8492), (120, 8540), (123, 8549), (124, 8552), (146, 8615), (149, 8624), (155, 8654), (163, 8690), (168, 8708),

Gene: DS6A_15 Start: 10364, Stop: 10735, Start Num: 34

Candidate Starts for DS6A_15:

(Start: 34 @10364 has 24 MA's), (70, 10427), (75, 10439), (86, 10466), (102, 10511), (110, 10532), (124, 10586), (129, 10601), (143, 10628), (148, 10643), (152, 10664), (158, 10688),

Gene: Daiboju_10 Start: 7547, Stop: 7984, Start Num: 20

Candidate Starts for Daiboju_10:

(Start: 20 @7547 has 69 MA's), (Start: 23 @7553 has 66 MA's), (48, 7592), (49, 7595), (86, 7688), (93, 7703), (97, 7715), (100, 7724), (101, 7727), (110, 7748), (158, 7907),

Gene: DanHam62_11 Start: 7902, Stop: 8342, Start Num: 20

Candidate Starts for DanHam62_11:

(Start: 20 @7902 has 69 MA's), (50, 7953), (88, 8055), (89, 8058), (103, 8094), (105, 8100), (111, 8115), (128, 8187), (138, 8214), (163, 8313), (166, 8319), (168, 8331),

Gene: Daob_13 Start: 8500, Stop: 8943, Start Num: 20

Candidate Starts for Daob_13:

(Start: 20 @8500 has 69 MA's), (66, 8590), (68, 8596), (86, 8650), (88, 8653), (103, 8692), (138, 8812), (146, 8836), (163, 8908), (166, 8914),

Gene: DickRichards_11 Start: 8405, Stop: 8800, Start Num: 36

Candidate Starts for DickRichards_11:

(6, 8279), (Start: 36 @8405 has 48 MA's), (57, 8444), (72, 8471), (101, 8549), (133, 8648), (143, 8681), (166, 8774),

Gene: Didgeridoo_12 Start: 8135, Stop: 8533, Start Num: 37

Candidate Starts for Didgeridoo_12:

(Start: 37 @8135 has 14 MA's), (133, 8381), (159, 8486),

Gene: Dino_14 Start: 10377, Stop: 10790, Start Num: 23

Candidate Starts for Dino_14:

(Start: 23 @10377 has 66 MA's), (86, 10512), (93, 10527), (110, 10572), (120, 10614), (158, 10731),

Gene: DirtyBubble_11 Start: 8173, Stop: 8565, Start Num: 39

Candidate Starts for DirtyBubble_11:

(6, 8044), (Start: 36 @8170 has 48 MA's), (Start: 39 @8173 has 11 MA's), (71, 8233), (136, 8428), (149, 8464), (156, 8497), (159, 8518),

Gene: Dismas_11 Start: 8141, Stop: 8542, Start Num: 37
Candidate Starts for Dismas_11:
(Start: 37 @8141 has 14 MA's), (101, 8291), (136, 8405), (156, 8474),

Gene: Donkey_12 Start: 8456, Stop: 8875, Start Num: 18
Candidate Starts for Donkey_12:
(Start: 18 @8456 has 17 MA's), (41, 8498), (144, 8780),

Gene: Doobus_11 Start: 8142, Stop: 8537, Start Num: 36
Candidate Starts for Doobus_11:
(6, 8016), (Start: 36 @8142 has 48 MA's), (72, 8208), (101, 8286), (133, 8385), (143, 8418), (166, 8511),

Gene: Doucette_12 Start: 7747, Stop: 8115, Start Num: 51
Candidate Starts for Doucette_12:
(2, 7546), (Start: 51 @7747 has 4 MA's), (75, 7804), (94, 7855), (129, 7966), (132, 7972), (135, 7984),

Gene: DrManhattan_12 Start: 9014, Stop: 9430, Start Num: 20
Candidate Starts for DrManhattan_12:
(Start: 20 @9014 has 69 MA's), (111, 9230),

Gene: DrRobert_10 Start: 7514, Stop: 7924, Start Num: 23
Candidate Starts for DrRobert_10:
(Start: 23 @7514 has 66 MA's), (72, 7607), (86, 7646), (93, 7661), (110, 7706), (120, 7748), (127, 7769), (158, 7865),

Gene: DrSierra_12 Start: 9047, Stop: 9463, Start Num: 20
Candidate Starts for DrSierra_12:
(Start: 20 @9047 has 69 MA's), (67, 9143), (86, 9200), (111, 9263),

Gene: DreamTeam_10 Start: 7581, Stop: 7991, Start Num: 23
Candidate Starts for DreamTeam_10:
(Start: 23 @7581 has 66 MA's), (86, 7713), (93, 7728), (110, 7773), (111, 7776), (158, 7932),

Gene: E6_13 Start: 7798, Stop: 8166, Start Num: 51
Candidate Starts for E6_13:
(2, 7597), (Start: 51 @7798 has 4 MA's), (75, 7855), (94, 7906), (129, 8017), (132, 8023), (135, 8035), (142, 8056),

Gene: EMSquaredA_13 Start: 8269, Stop: 8655, Start Num: 33
Candidate Starts for EMSquaredA_13:
(Start: 33 @8269 has 23 MA's), (62, 8326),

Gene: Ecliptus_12 Start: 7118, Stop: 7501, Start Num: 30
Candidate Starts for Ecliptus_12:
(Start: 30 @7118 has 11 MA's), (Start: 37 @7133 has 14 MA's), (58, 7172), (61, 7178), (66, 7190), (76, 7214), (143, 7397), (167, 7487),

Gene: Eden_10 Start: 7777, Stop: 8181, Start Num: 34
Candidate Starts for Eden_10:
(Start: 34 @7777 has 24 MA's), (Start: 39 @7783 has 11 MA's), (101, 7933), (109, 7951), (126, 8011), (138, 8047), (156, 8113),

Gene: Eesa_12 Start: 8495, Stop: 8935, Start Num: 20

Candidate Starts for Eesa_12:

(Start: 15 @8483 has 1 MA's), (Start: 20 @8495 has 69 MA's), (66, 8585), (68, 8591), (80, 8627), (86, 8645), (88, 8648), (103, 8687), (128, 8780), (138, 8807), (146, 8831), (155, 8867), (163, 8903),

Gene: Elezi_12 Start: 9019, Stop: 9429, Start Num: 19

Candidate Starts for Elezi_12:

(Start: 19 @9019 has 48 MA's), (55, 9088), (109, 9226), (112, 9238), (149, 9349), (158, 9382),

Gene: Elfy_10 Start: 6715, Stop: 7113, Start Num: 31

Candidate Starts for Elfy_10:

(Start: 19 @6688 has 48 MA's), (25, 6700), (Start: 31 @6715 has 2 MA's), (48, 6742), (70, 6796), (82, 6823), (93, 6850), (103, 6877), (108, 6889), (128, 6961), (138, 6985), (146, 7009),

Gene: Elva_12 Start: 8225, Stop: 8620, Start Num: 36

Candidate Starts for Elva_12:

(6, 8099), (Start: 36 @8225 has 48 MA's), (101, 8369), (136, 8483), (149, 8519), (156, 8552), (159, 8573),

Gene: Emotion_11 Start: 7354, Stop: 7758, Start Num: 23

Candidate Starts for Emotion_11:

(Start: 23 @7354 has 66 MA's), (109, 7555),

Gene: EnalisNailo_13 Start: 8269, Stop: 8655, Start Num: 33

Candidate Starts for EnalisNailo_13:

(Start: 33 @8269 has 23 MA's), (62, 8326),

Gene: Eraser_12 Start: 9019, Stop: 9429, Start Num: 19

Candidate Starts for Eraser_12:

(Start: 19 @9019 has 48 MA's), (55, 9088), (109, 9226), (112, 9238), (149, 9349), (158, 9382),

Gene: EstebanJulior_10 Start: 7558, Stop: 7971, Start Num: 23

Candidate Starts for EstebanJulior_10:

(Start: 23 @7558 has 66 MA's), (57, 7621), (93, 7705), (110, 7750), (111, 7753), (120, 7792), (144, 7852), (158, 7909),

Gene: Eula_11 Start: 7912, Stop: 8307, Start Num: 36

Candidate Starts for Eula_11:

(Start: 36 @7912 has 48 MA's), (57, 7951), (72, 7978), (92, 8029), (101, 8056), (143, 8188), (166, 8281),

Gene: Eunoia_10 Start: 7551, Stop: 7982, Start Num: 23

Candidate Starts for Eunoia_10:

(Start: 20 @7545 has 69 MA's), (Start: 23 @7551 has 66 MA's), (35, 7572), (71, 7644), (93, 7701), (97, 7713), (100, 7722), (110, 7746), (158, 7905),

Gene: EvenBluerMoon_12 Start: 8744, Stop: 9133, Start Num: 34

Candidate Starts for EvenBluerMoon_12:

(Start: 34 @8744 has 24 MA's), (99, 8891), (120, 8957), (124, 8969),

Gene: Exile_11 Start: 8927, Stop: 9337, Start Num: 20

Candidate Starts for Exile_11:

(Start: 20 @8927 has 69 MA's), (158, 9290),

Gene: Ezurina_12 Start: 7295, Stop: 7687, Start Num: 34

Candidate Starts for Ezurina_12:

(Start: 34 @7295 has 24 MA's), (Start: 51 @7316 has 4 MA's), (81, 7397), (100, 7448), (101, 7451), (128, 7538), (129, 7541), (161, 7655), (168, 7679),

Gene: Faiyaz_18 Start: 11997, Stop: 12434, Start Num: 19

Candidate Starts for Faiyaz_18:

(Start: 17 @11994 has 4 MA's), (Start: 19 @11997 has 48 MA's), (57, 12075), (61, 12084), (63, 12090), (66, 12096), (96, 12174), (116, 12240), (128, 12276), (152, 12351), (161, 12390),

Gene: Finalfrontier_12 Start: 8424, Stop: 8819, Start Num: 36

Candidate Starts for Finalfrontier_12:

(Start: 36 @8424 has 48 MA's), (57, 8463), (72, 8490), (101, 8568), (143, 8700), (166, 8793),

Gene: Fingolfin_11 Start: 7903, Stop: 8343, Start Num: 20

Candidate Starts for Fingolfin_11:

(Start: 20 @7903 has 69 MA's), (50, 7954), (88, 8056), (89, 8059), (103, 8095), (105, 8101), (111, 8116), (128, 8188), (138, 8215), (163, 8314), (166, 8320), (168, 8332),

Gene: FiveHead_11 Start: 7283, Stop: 7678, Start Num: 21

Candidate Starts for FiveHead_11:

(Start: 21 @7283 has 4 MA's), (109, 7475),

Gene: FlameThrower_11 Start: 7876, Stop: 8274, Start Num: 37

Candidate Starts for FlameThrower_11:

(1, 7678), (Start: 37 @7876 has 14 MA's), (Start: 51 @7897 has 4 MA's), (143, 8155), (149, 8173), (156, 8206),

Gene: Floof_11 Start: 7791, Stop: 8213, Start Num: 19

Candidate Starts for Floof_11:

(Start: 19 @7791 has 48 MA's), (70, 7884), (72, 7890), (77, 7905), (109, 7995), (118, 8034), (125, 8052), (159, 8163),

Gene: Floral_13 Start: 8269, Stop: 8655, Start Num: 33

Candidate Starts for Floral_13:

(Start: 33 @8269 has 23 MA's), (62, 8326),

Gene: Fluke_14 Start: 10419, Stop: 10832, Start Num: 23

Candidate Starts for Fluke_14:

(Start: 23 @10419 has 66 MA's), (86, 10554), (110, 10614), (120, 10656), (158, 10773),

Gene: Flutur_12 Start: 9039, Stop: 9452, Start Num: 19

Candidate Starts for Flutur_12:

(Start: 19 @9039 has 48 MA's), (55, 9108), (149, 9369), (158, 9402),

Gene: Forester_20 Start: 9343, Stop: 9765, Start Num: 19

Candidate Starts for Forester_20:

(Start: 19 @9343 has 48 MA's), (70, 9436), (72, 9442), (77, 9457), (109, 9547), (118, 9586), (125, 9604), (159, 9715),

Gene: Franklin22_10 Start: 7758, Stop: 8153, Start Num: 34

Candidate Starts for Franklin22_10:

(Start: 34 @7758 has 24 MA's), (Start: 39 @7764 has 11 MA's), (101, 7905), (109, 7923), (156, 8085),

Gene: Frickyeah_12 Start: 7041, Stop: 7451, Start Num: 27

Candidate Starts for Frickyeah_12:

(4, 6912), (8, 6957), (9, 6963), (10, 6969), (12, 6987), (Start: 27 @7041 has 32 MA's), (46, 7068), (67, 7113), (70, 7119), (85, 7173), (100, 7212), (103, 7218), (111, 7239), (124, 7290), (128, 7302),

Gene: G4_12 Start: 7735, Stop: 8103, Start Num: 51

Candidate Starts for G4_12:

(2, 7534), (Start: 51 @7735 has 4 MA's), (75, 7792), (129, 7954), (132, 7960), (135, 7972), (143, 7996),

Gene: Gack_10 Start: 7830, Stop: 8219, Start Num: 39

Candidate Starts for Gack_10:

(Start: 39 @7830 has 11 MA's), (81, 7917), (101, 7971), (108, 7986), (134, 8076), (149, 8118), (156, 8151),

Gene: Gaia_9 Start: 7642, Stop: 8013, Start Num: 34

Candidate Starts for Gaia_9:

(Start: 34 @7642 has 24 MA's), (83, 7738), (91, 7759), (100, 7786), (101, 7789), (103, 7792), (109, 7807), (124, 7864), (128, 7876), (147, 7921), (160, 7981), (161, 7987), (163, 7993),

Gene: Galaxy_12 Start: 8328, Stop: 8771, Start Num: 20

Candidate Starts for Galaxy_12:

(Start: 20 @8328 has 69 MA's), (68, 8424), (86, 8478), (88, 8481), (100, 8514), (128, 8613), (138, 8640), (146, 8664), (148, 8670), (150, 8679),

Gene: Gambol_12 Start: 8456, Stop: 8875, Start Num: 18

Candidate Starts for Gambol_12:

(Start: 18 @8456 has 17 MA's), (41, 8498), (144, 8780),

Gene: GardenState_11 Start: 8458, Stop: 8877, Start Num: 19

Candidate Starts for GardenState_11:

(Start: 19 @8458 has 48 MA's), (70, 8551), (72, 8557), (109, 8662), (118, 8701),

Gene: Gerri43_13 Start: 7727, Stop: 8119, Start Num: 34

Candidate Starts for Gerri43_13:

(Start: 34 @7727 has 24 MA's), (80, 7826), (81, 7829), (100, 7880), (101, 7883), (128, 7970), (129, 7973), (161, 8087), (168, 8111),

Gene: Getalong_12 Start: 7041, Stop: 7433, Start Num: 27

Candidate Starts for Getalong_12:

(4, 6912), (8, 6957), (9, 6963), (10, 6969), (12, 6987), (Start: 27 @7041 has 32 MA's), (46, 7068), (63, 7107), (67, 7113), (70, 7119), (75, 7131), (85, 7155), (100, 7194), (103, 7200), (108, 7212), (111, 7221), (124, 7272), (128, 7284),

Gene: Gibbzilla_13 Start: 7779, Stop: 8162, Start Num: 30

Candidate Starts for Gibbzilla_13:

(25, 7770), (Start: 30 @7779 has 11 MA's), (71, 7863), (89, 7905), (101, 7938), (160, 8118),

Gene: Giorgio_12 Start: 8549, Stop: 8968, Start Num: 18

Candidate Starts for Giorgio_12:

(Start: 18 @8549 has 17 MA's), (41, 8591), (111, 8768), (144, 8873),

Gene: Gisselle_10 Start: 7581, Stop: 7991, Start Num: 23

Candidate Starts for Gisselle_10:

(Start: 23 @7581 has 66 MA's), (86, 7713), (93, 7728), (110, 7773), (111, 7776), (158, 7932),

Gene: Glenn_14 Start: 10429, Stop: 10842, Start Num: 23

Candidate Starts for Glenn_14:

(Start: 23 @10429 has 66 MA's), (86, 10564), (93, 10579), (110, 10624), (120, 10666), (158, 10783),

Gene: Glotell_11 Start: 7902, Stop: 8342, Start Num: 20

Candidate Starts for Glotell_11:

(Start: 20 @7902 has 69 MA's), (50, 7953), (88, 8055), (89, 8058), (103, 8094), (105, 8100), (111, 8115), (128, 8187), (138, 8214), (163, 8313), (166, 8319), (168, 8331),

Gene: Gravel_13 Start: 8491, Stop: 8931, Start Num: 20

Candidate Starts for Gravel_13:

(Start: 15 @8479 has 1 MA's), (Start: 20 @8491 has 69 MA's), (66, 8581), (80, 8623), (86, 8641), (88, 8644), (103, 8683), (128, 8776), (138, 8803), (146, 8827), (155, 8863), (163, 8899),

Gene: Graynor_14 Start: 10435, Stop: 10845, Start Num: 23

Candidate Starts for Graynor_14:

(Start: 23 @10435 has 66 MA's), (Start: 51 @10477 has 4 MA's), (93, 10579), (158, 10783),

Gene: GreenHearts_14 Start: 10522, Stop: 10932, Start Num: 27

Candidate Starts for GreenHearts_14:

(Start: 27 @10522 has 32 MA's), (69, 10606), (93, 10666), (96, 10675), (97, 10678), (109, 10708), (111, 10714), (118, 10747), (158, 10870), (163, 10894),

Gene: Greenhouse_14 Start: 10447, Stop: 10857, Start Num: 27

Candidate Starts for Greenhouse_14:

(Start: 27 @10447 has 32 MA's), (93, 10591), (96, 10600), (97, 10603), (109, 10633), (111, 10639), (118, 10672), (158, 10795), (163, 10819),

Gene: Gretchen_11 Start: 9337, Stop: 9759, Start Num: 19

Candidate Starts for Gretchen_11:

(Start: 19 @9337 has 48 MA's), (70, 9430), (72, 9436), (77, 9451), (109, 9541), (118, 9580), (125, 9598), (159, 9709),

Gene: GrimEater_12 Start: 6797, Stop: 7189, Start Num: 36

Candidate Starts for GrimEater_12:

(Start: 32 @6791 has 1 MA's), (Start: 36 @6797 has 48 MA's), (42, 6806), (108, 6962), (128, 7034), (132, 7043),

Gene: Gumpizza_12 Start: 8548, Stop: 8967, Start Num: 18

Candidate Starts for Gumpizza_12:

(Start: 18 @8548 has 17 MA's), (41, 8590), (111, 8767), (144, 8872),

Gene: Halsey_12 Start: 8547, Stop: 8966, Start Num: 18

Candidate Starts for Halsey_12:

(Start: 18 @8547 has 17 MA's), (41, 8589), (144, 8871),

Gene: HamCheese_11 Start: 7902, Stop: 8342, Start Num: 20

Candidate Starts for HamCheese_11:

(Start: 20 @7902 has 69 MA's), (50, 7953), (88, 8055), (89, 8058), (103, 8094), (105, 8100), (111, 8115), (128, 8187), (138, 8214), (163, 8313), (166, 8319), (168, 8331),

Gene: HannahPhantana_13 Start: 8500, Stop: 8943, Start Num: 20

Candidate Starts for HannahPhantana_13:

(Start: 20 @8500 has 69 MA's), (66, 8590), (68, 8596), (86, 8650), (88, 8653), (103, 8692), (138, 8812), (146, 8836), (163, 8908), (166, 8914),

Gene: HeadNerd_10 Start: 7516, Stop: 7926, Start Num: 23

Candidate Starts for HeadNerd_10:

(Start: 23 @7516 has 66 MA's), (86, 7648), (93, 7663), (110, 7708), (111, 7711), (120, 7750), (158, 7867),

Gene: Herb_10 Start: 7547, Stop: 7984, Start Num: 20

Candidate Starts for Herb_10:

(Start: 20 @7547 has 69 MA's), (Start: 23 @7553 has 66 MA's), (48, 7592), (49, 7595), (86, 7688), (93, 7703), (97, 7715), (100, 7724), (101, 7727), (110, 7748), (158, 7907),

Gene: Hilltopfarm_18 Start: 12024, Stop: 12464, Start Num: 17

Candidate Starts for Hilltopfarm_18:

(Start: 17 @12024 has 4 MA's), (Start: 19 @12027 has 48 MA's), (57, 12105), (61, 12114), (63, 12120), (66, 12126), (96, 12204), (116, 12270), (128, 12306), (152, 12381), (161, 12420),

Gene: Holliday_12 Start: 7046, Stop: 7438, Start Num: 27

Candidate Starts for Holliday_12:

(4, 6917), (8, 6962), (9, 6968), (10, 6974), (12, 6992), (14, 7010), (Start: 27 @7046 has 32 MA's), (46, 7073), (67, 7118), (70, 7124), (75, 7136), (85, 7160), (100, 7199), (103, 7205), (109, 7220), (111, 7226), (124, 7277), (128, 7289), (149, 7343),

Gene: Honk_10 Start: 7323, Stop: 7739, Start Num: 19

Candidate Starts for Honk_10:

(Start: 19 @7323 has 48 MA's), (67, 7416), (86, 7473), (158, 7692),

Gene: Horus_12 Start: 7041, Stop: 7451, Start Num: 27

Candidate Starts for Horus_12:

(4, 6912), (8, 6957), (9, 6963), (10, 6969), (12, 6987), (Start: 27 @7041 has 32 MA's), (46, 7068), (67, 7113), (70, 7119), (85, 7173), (100, 7212), (103, 7218), (111, 7239), (124, 7290), (128, 7302),

Gene: Huckleberry_10 Start: 7516, Stop: 7926, Start Num: 23

Candidate Starts for Huckleberry_10:

(Start: 23 @7516 has 66 MA's), (86, 7648), (93, 7663), (110, 7708), (111, 7711), (120, 7750), (158, 7867),

Gene: HunterDalle_10 Start: 7551, Stop: 7982, Start Num: 23

Candidate Starts for HunterDalle_10:

(Start: 20 @7545 has 69 MA's), (Start: 23 @7551 has 66 MA's), (35, 7572), (71, 7644), (97, 7713), (100, 7722), (110, 7746), (158, 7905),

Gene: Huntingdon_14 Start: 10433, Stop: 10843, Start Num: 27

Candidate Starts for Huntingdon_14:

(Start: 27 @10433 has 32 MA's), (93, 10577), (96, 10586), (97, 10589), (109, 10619), (111, 10625), (118, 10658), (158, 10781), (163, 10805),

Gene: IAmGroot_11 Start: 9102, Stop: 9521, Start Num: 19
Candidate Starts for IAmGroot_11:
(Start: 19 @9102 has 48 MA's), (70, 9195), (72, 9201), (109, 9306), (118, 9345),

Gene: IUFootball_11 Start: 7496, Stop: 7915, Start Num: 19
Candidate Starts for IUFootball_11:
(Start: 19 @7496 has 48 MA's), (29, 7514), (70, 7601), (111, 7715), (158, 7865),

Gene: Icarian_12 Start: 8152, Stop: 8547, Start Num: 36
Candidate Starts for Icarian_12:
(Start: 36 @8152 has 48 MA's), (71, 8215), (93, 8272), (156, 8479), (159, 8500),

Gene: Immaculata_14 Start: 10423, Stop: 10836, Start Num: 23
Candidate Starts for Immaculata_14:
(Start: 23 @10423 has 66 MA's), (86, 10558), (93, 10573), (110, 10618), (120, 10660), (158, 10777),

Gene: IndyLu_11 Start: 7957, Stop: 8355, Start Num: 36
Candidate Starts for IndyLu_11:
(Start: 36 @7957 has 48 MA's), (133, 8203), (159, 8308),

Gene: Iter_12 Start: 9053, Stop: 9463, Start Num: 19
Candidate Starts for Iter_12:
(Start: 19 @9053 has 48 MA's), (55, 9122), (112, 9272), (149, 9383), (158, 9416),

Gene: IttyBittyPiggy_12 Start: 9041, Stop: 9454, Start Num: 19
Candidate Starts for IttyBittyPiggy_12:
(Start: 19 @9041 has 48 MA's), (55, 9110), (149, 9371), (158, 9404),

Gene: Jabb_11 Start: 7951, Stop: 8346, Start Num: 36
Candidate Starts for Jabb_11:
(6, 7825), (Start: 36 @7951 has 48 MA's), (57, 7990), (72, 8017), (101, 8095), (143, 8227), (166, 8320),

Gene: Jablanski_13 Start: 8116, Stop: 8502, Start Num: 33
Candidate Starts for Jablanski_13:
(11, 8035), (Start: 33 @8116 has 23 MA's), (53, 8152), (62, 8173),

Gene: Jamun_12 Start: 8669, Stop: 9112, Start Num: 20
Candidate Starts for Jamun_12:
(Start: 20 @8669 has 69 MA's), (45, 8711), (54, 8729), (68, 8765), (86, 8819), (88, 8822), (103, 8861),
(114, 8915), (128, 8954), (138, 8981), (146, 9005), (148, 9011),

Gene: Janeemi_13 Start: 10130, Stop: 10543, Start Num: 19
Candidate Starts for Janeemi_13:
(Start: 19 @10130 has 48 MA's), (43, 10175), (109, 10337), (112, 10349), (149, 10460), (158, 10493),

Gene: JanetJ_12 Start: 8526, Stop: 8915, Start Num: 34
Candidate Starts for JanetJ_12:
(Start: 34 @8526 has 24 MA's), (109, 8694), (120, 8739), (124, 8751), (149, 8823), (161, 8871),

Gene: Jankie_13 Start: 6796, Stop: 7188, Start Num: 36
Candidate Starts for Jankie_13:
(Start: 32 @6790 has 1 MA's), (Start: 36 @6796 has 48 MA's), (42, 6805), (108, 6961), (128, 7033),
(132, 7042),

Gene: JasmineDragon_11 Start: 7286, Stop: 7681, Start Num: 21

Candidate Starts for JasmineDragon_11:

(Start: 21 @7286 has 4 MA's), (109, 7478),

Gene: JeanClaude_11 Start: 7509, Stop: 7886, Start Num: 34

Candidate Starts for JeanClaude_11:

(Start: 34 @7509 has 24 MA's), (89, 7623), (99, 7650), (109, 7671), (141, 7779), (153, 7815), (161, 7848),

Gene: Jerole_13 Start: 8497, Stop: 8940, Start Num: 20

Candidate Starts for Jerole_13:

(Start: 20 @8497 has 69 MA's), (66, 8587), (68, 8593), (86, 8647), (88, 8650), (103, 8689), (138, 8809), (146, 8833), (163, 8905), (166, 8911),

Gene: Joann_14 Start: 10425, Stop: 10835, Start Num: 27

Candidate Starts for Joann_14:

(Start: 27 @10425 has 32 MA's), (93, 10569), (96, 10578), (97, 10581), (109, 10611), (111, 10617), (118, 10650), (158, 10773), (163, 10797),

Gene: Joemato_12 Start: 9040, Stop: 9453, Start Num: 19

Candidate Starts for Joemato_12:

(Start: 19 @9040 has 48 MA's), (55, 9109), (112, 9259), (149, 9370), (158, 9403),

Gene: JohnDoe_12 Start: 9038, Stop: 9451, Start Num: 19

Candidate Starts for JohnDoe_12:

(Start: 19 @9038 has 48 MA's), (55, 9107), (112, 9257), (149, 9368), (158, 9401),

Gene: JohnThicc_11 Start: 7283, Stop: 7678, Start Num: 21

Candidate Starts for JohnThicc_11:

(Start: 21 @7283 has 4 MA's), (109, 7475),

Gene: Johnathan_11 Start: 7911, Stop: 8306, Start Num: 36

Candidate Starts for Johnathan_11:

(6, 7785), (Start: 36 @7911 has 48 MA's), (57, 7950), (72, 7977), (101, 8055), (133, 8154), (143, 8187), (166, 8280),

Gene: Jovita_11 Start: 8013, Stop: 8408, Start Num: 36

Candidate Starts for Jovita_11:

(Start: 36 @8013 has 48 MA's), (57, 8052), (72, 8079), (101, 8157), (143, 8289), (166, 8382),

Gene: Jstan_12 Start: 9019, Stop: 9429, Start Num: 19

Candidate Starts for Jstan_12:

(Start: 19 @9019 has 48 MA's), (55, 9088), (109, 9226), (112, 9238), (149, 9349), (158, 9382),

Gene: Jumboset_14 Start: 10372, Stop: 10785, Start Num: 23

Candidate Starts for Jumboset_14:

(Start: 23 @10372 has 66 MA's), (86, 10507), (93, 10522), (110, 10567), (120, 10609), (158, 10726),

Gene: JuneStar_12 Start: 9135, Stop: 9548, Start Num: 19

Candidate Starts for JuneStar_12:

(Start: 19 @9135 has 48 MA's), (149, 9465), (158, 9498),

Gene: Juno112_11 Start: 7903, Stop: 8343, Start Num: 20

Candidate Starts for Juno112_11:

(Start: 20 @7903 has 69 MA's), (50, 7954), (88, 8056), (89, 8059), (103, 8095), (105, 8101), (111, 8116), (128, 8188), (138, 8215), (163, 8314), (166, 8320), (168, 8332),

Gene: KHumphrey_11 Start: 7902, Stop: 8342, Start Num: 20

Candidate Starts for KHumphrey_11:

(Start: 20 @7902 has 69 MA's), (50, 7953), (88, 8055), (89, 8058), (103, 8094), (105, 8100), (111, 8115), (128, 8187), (138, 8214), (163, 8313), (166, 8319), (168, 8331),

Gene: Kalimba_12 Start: 8456, Stop: 8875, Start Num: 18

Candidate Starts for Kalimba_12:

(Start: 18 @8456 has 17 MA's), (41, 8498), (144, 8780),

Gene: Kalizoi_14 Start: 10371, Stop: 10784, Start Num: 23

Candidate Starts for Kalizoi_14:

(Start: 23 @10371 has 66 MA's), (86, 10506), (93, 10521), (110, 10566), (120, 10608), (158, 10725),

Gene: Kamaru_12 Start: 7046, Stop: 7438, Start Num: 27

Candidate Starts for Kamaru_12:

(4, 6917), (8, 6962), (9, 6968), (10, 6974), (12, 6992), (14, 7010), (Start: 27 @7046 has 32 MA's), (46, 7073), (67, 7118), (70, 7124), (75, 7136), (85, 7160), (100, 7199), (103, 7205), (109, 7220), (111, 7226), (124, 7277), (128, 7289), (149, 7343),

Gene: Kamdara_11 Start: 8140, Stop: 8541, Start Num: 37

Candidate Starts for Kamdara_11:

(Start: 37 @8140 has 14 MA's), (101, 8290), (136, 8404), (156, 8473),

Gene: Kate33_11 Start: 7956, Stop: 8354, Start Num: 36

Candidate Starts for Kate33_11:

(Start: 36 @7956 has 48 MA's), (133, 8202), (159, 8307),

Gene: Katzastrophic_11 Start: 8051, Stop: 8449, Start Num: 37

Candidate Starts for Katzastrophic_11:

(5, 7913), (Start: 37 @8051 has 14 MA's), (Start: 51 @8072 has 4 MA's), (143, 8330), (149, 8348), (156, 8381),

Gene: Kaylissa_12 Start: 9041, Stop: 9454, Start Num: 19

Candidate Starts for Kaylissa_12:

(Start: 19 @9041 has 48 MA's), (55, 9110), (112, 9260), (149, 9371), (158, 9404),

Gene: KeAlii_12 Start: 9073, Stop: 9474, Start Num: 22

Candidate Starts for KeAlii_12:

(Start: 22 @9073 has 2 MA's), (Start: 27 @9079 has 32 MA's), (112, 9280), (130, 9340), (158, 9424),

Gene: KendraB23_13 Start: 8492, Stop: 8932, Start Num: 20

Candidate Starts for KendraB23_13:

(Start: 15 @8480 has 1 MA's), (Start: 20 @8492 has 69 MA's), (66, 8582), (80, 8624), (86, 8642), (88, 8645), (103, 8684), (128, 8777), (138, 8804), (146, 8828), (155, 8864), (163, 8900),

Gene: Kenna_12 Start: 7041, Stop: 7451, Start Num: 27

Candidate Starts for Kenna_12:

(4, 6912), (8, 6957), (9, 6963), (10, 6969), (12, 6987), (14, 7005), (Start: 27 @7041 has 32 MA's), (46, 7068), (67, 7113), (70, 7119), (85, 7173), (100, 7212), (103, 7218), (111, 7239), (124, 7290), (128, 7302),

Gene: Kenzers_11 Start: 7928, Stop: 8323, Start Num: 36

Candidate Starts for Kenzers_11:

(Start: 36 @7928 has 48 MA's), (57, 7967), (101, 8072), (133, 8171), (143, 8204), (166, 8297),

Gene: Kepler_12 Start: 8335, Stop: 8778, Start Num: 20

Candidate Starts for Kepler_12:

(Start: 20 @8335 has 69 MA's), (66, 8425), (68, 8431), (86, 8485), (88, 8488), (103, 8527), (138, 8647), (146, 8671), (163, 8743), (166, 8749),

Gene: Kieran_11 Start: 8144, Stop: 8545, Start Num: 37

Candidate Starts for Kieran_11:

(Start: 37 @8144 has 14 MA's), (101, 8294), (136, 8408), (156, 8477),

Gene: KingBob_10 Start: 7547, Stop: 7984, Start Num: 20

Candidate Starts for KingBob_10:

(Start: 20 @7547 has 69 MA's), (Start: 23 @7553 has 66 MA's), (48, 7592), (49, 7595), (86, 7688), (93, 7703), (97, 7715), (100, 7724), (101, 7727), (110, 7748), (158, 7907),

Gene: Kittykat_10 Start: 7557, Stop: 7967, Start Num: 23

Candidate Starts for Kittykat_10:

(Start: 23 @7557 has 66 MA's), (86, 7689), (93, 7704), (110, 7749), (111, 7752), (158, 7908),

Gene: Korra_14 Start: 10377, Stop: 10790, Start Num: 23

Candidate Starts for Korra_14:

(Start: 23 @10377 has 66 MA's), (86, 10512), (93, 10527), (110, 10572), (120, 10614), (158, 10731),

Gene: Kromp_13 Start: 9303, Stop: 9734, Start Num: 19

Candidate Starts for Kromp_13:

(Start: 19 @9303 has 48 MA's), (79, 9426), (84, 9441), (87, 9447), (96, 9471), (107, 9495), (147, 9627), (160, 9687), (161, 9693), (162, 9696), (164, 9702),

Gene: Kuleana_12 Start: 8295, Stop: 8735, Start Num: 20

Candidate Starts for Kuleana_12:

(Start: 20 @8295 has 69 MA's), (66, 8385), (68, 8391), (73, 8403), (88, 8448), (103, 8487), (111, 8508), (127, 8577), (128, 8580), (138, 8607), (140, 8616), (146, 8631), (163, 8703), (166, 8709),

Gene: Kumotta_12 Start: 8443, Stop: 8820, Start Num: 34

Candidate Starts for Kumotta_12:

(Start: 34 @8443 has 24 MA's), (99, 8584), (109, 8605), (111, 8611), (120, 8650), (139, 8707), (141, 8713), (153, 8749), (161, 8782),

Gene: Kuwabara_12 Start: 7390, Stop: 7773, Start Num: 30

Candidate Starts for Kuwabara_12:

(Start: 30 @7390 has 11 MA's), (58, 7444), (61, 7450), (66, 7462), (76, 7486), (143, 7669), (167, 7759),

Gene: LadyAstra_11 Start: 7283, Stop: 7678, Start Num: 21

Candidate Starts for LadyAstra_11:

(Start: 21 @7283 has 4 MA's), (109, 7475),

Gene: Lahqtemish_11 Start: 8003, Stop: 8401, Start Num: 37
Candidate Starts for Lahqtemish_11:
(Start: 37 @8003 has 14 MA's), (57, 8042), (133, 8249), (159, 8354),

Gene: Lakshmi_14 Start: 10452, Stop: 10862, Start Num: 27
Candidate Starts for Lakshmi_14:
(Start: 27 @10452 has 32 MA's), (93, 10596), (96, 10605), (97, 10608), (109, 10638), (111, 10644),
(118, 10677), (158, 10800), (163, 10824),

Gene: Laphuphu24k_11 Start: 7902, Stop: 8342, Start Num: 20
Candidate Starts for Laphuphu24k_11:
(Start: 20 @7902 has 69 MA's), (50, 7953), (88, 8055), (89, 8058), (103, 8094), (105, 8100), (111,
8115), (128, 8187), (138, 8214), (163, 8313), (166, 8319), (168, 8331),

Gene: Lasagna_10 Start: 7514, Stop: 7924, Start Num: 23
Candidate Starts for Lasagna_10:
(Start: 23 @7514 has 66 MA's), (72, 7607), (86, 7646), (93, 7661), (110, 7706), (120, 7748), (127,
7769), (158, 7865),

Gene: LastNadiia_16 Start: 10019, Stop: 10411, Start Num: 34
Candidate Starts for LastNadiia_16:
(Start: 34 @10019 has 24 MA's), (67, 10082), (101, 10175), (112, 10205), (127, 10259), (128, 10262),
(129, 10265), (143, 10301), (168, 10403),

Gene: Lego_12 Start: 9039, Stop: 9452, Start Num: 19
Candidate Starts for Lego_12:
(Start: 19 @9039 has 48 MA's), (55, 9108), (112, 9258), (149, 9369), (158, 9402),

Gene: Lennox_10 Start: 7514, Stop: 7924, Start Num: 23
Candidate Starts for Lennox_10:
(Start: 23 @7514 has 66 MA's), (72, 7607), (86, 7646), (93, 7661), (110, 7706), (120, 7748), (127,
7769), (158, 7865),

Gene: Leona_11 Start: 7953, Stop: 8393, Start Num: 20
Candidate Starts for Leona_11:
(Start: 20 @7953 has 69 MA's), (88, 8106), (89, 8109), (103, 8145), (105, 8151), (111, 8166), (128,
8238), (138, 8265), (163, 8364), (166, 8370), (168, 8382),

Gene: Leroy_12 Start: 7042, Stop: 7452, Start Num: 27
Candidate Starts for Leroy_12:
(4, 6913), (8, 6958), (9, 6964), (10, 6970), (12, 6988), (Start: 27 @7042 has 32 MA's), (46, 7069), (67,
7114), (70, 7120), (85, 7174), (100, 7213), (103, 7219), (111, 7240), (124, 7291), (128, 7303),

Gene: Liebe_11 Start: 7496, Stop: 7915, Start Num: 19
Candidate Starts for Liebe_11:
(Start: 19 @7496 has 48 MA's), (29, 7514), (70, 7601), (111, 7715), (158, 7865),

Gene: LilSpotty_11 Start: 7105, Stop: 7479, Start Num: 34
Candidate Starts for LilSpotty_11:
(Start: 32 @7102 has 1 MA's), (Start: 34 @7105 has 24 MA's), (91, 7219), (92, 7222), (124, 7330),
(128, 7342), (129, 7345), (147, 7384), (165, 7459),

Gene: LilStuart_10 Start: 7514, Stop: 7924, Start Num: 23

Candidate Starts for LilStuart_10:

(Start: 23 @7514 has 66 MA's), (72, 7607), (86, 7646), (93, 7661), (110, 7706), (120, 7748), (127, 7769), (158, 7865),

Gene: Lilas_13 Start: 8269, Stop: 8655, Start Num: 33

Candidate Starts for Lilas_13:

(Start: 33 @8269 has 23 MA's), (62, 8326),

Gene: Lilo27_11 Start: 7888, Stop: 8283, Start Num: 36

Candidate Starts for Lilo27_11:

(Start: 36 @7888 has 48 MA's), (57, 7927), (72, 7954), (101, 8032), (133, 8131), (143, 8164), (166, 8257),

Gene: LimaBean_11 Start: 7911, Stop: 8306, Start Num: 36

Candidate Starts for LimaBean_11:

(6, 7785), (Start: 36 @7911 has 48 MA's), (57, 7950), (72, 7977), (101, 8055), (133, 8154), (143, 8187), (166, 8280),

Gene: LisoBros_11 Start: 7066, Stop: 7461, Start Num: 32

Candidate Starts for LisoBros_11:

(Start: 32 @7066 has 1 MA's), (55, 7102), (89, 7186), (108, 7234), (128, 7306),

Gene: LitninMcQueen_12 Start: 7046, Stop: 7438, Start Num: 27

Candidate Starts for LitninMcQueen_12:

(4, 6917), (8, 6962), (9, 6968), (10, 6974), (12, 6992), (14, 7010), (Start: 27 @7046 has 32 MA's), (46, 7073), (67, 7118), (70, 7124), (75, 7136), (85, 7160), (100, 7199), (103, 7205), (109, 7220), (111, 7226), (124, 7277), (128, 7289), (149, 7343),

Gene: Litotes_14 Start: 10399, Stop: 10809, Start Num: 23

Candidate Starts for Litotes_14:

(Start: 23 @10399 has 66 MA's), (Start: 51 @10441 has 4 MA's), (93, 10543), (158, 10747),

Gene: LittleTokyo_12 Start: 8235, Stop: 8678, Start Num: 20

Candidate Starts for LittleTokyo_12:

(Start: 15 @8223 has 1 MA's), (16, 8226), (Start: 20 @8235 has 69 MA's), (111, 8448), (120, 8496), (123, 8505), (124, 8508), (128, 8520), (146, 8571), (149, 8580), (163, 8646), (168, 8664),

Gene: Lizalica_12 Start: 9025, Stop: 9438, Start Num: 19

Candidate Starts for Lizalica_12:

(Start: 19 @9025 has 48 MA's), (55, 9094), (112, 9244), (149, 9355), (158, 9388),

Gene: London_12 Start: 9019, Stop: 9429, Start Num: 19

Candidate Starts for London_12:

(Start: 19 @9019 has 48 MA's), (55, 9088), (109, 9226), (112, 9238), (149, 9349), (158, 9382),

Gene: LonelyBoi_13 Start: 8116, Stop: 8502, Start Num: 33

Candidate Starts for LonelyBoi_13:

(11, 8035), (Start: 33 @8116 has 23 MA's), (62, 8173),

Gene: Loviatar_11 Start: 8231, Stop: 8626, Start Num: 36

Candidate Starts for Loviatar_11:

(6, 8105), (Start: 36 @8231 has 48 MA's), (Start: 39 @8234 has 11 MA's), (71, 8294), (136, 8489), (149, 8525), (156, 8558), (159, 8579),

Gene: Lucky10_11 Start: 6599, Stop: 6982, Start Num: 30

Candidate Starts for Lucky10_11:

(Start: 30 @6599 has 11 MA's), (58, 6653), (61, 6659), (66, 6671), (76, 6695), (99, 6755),

Gene: Lucy_10 Start: 7505, Stop: 7915, Start Num: 23

Candidate Starts for Lucy_10:

(Start: 23 @7505 has 66 MA's), (72, 7598), (86, 7637), (93, 7652), (110, 7697), (120, 7739), (127, 7760), (158, 7856),

Gene: Lunar_13 Start: 8497, Stop: 8940, Start Num: 20

Candidate Starts for Lunar_13:

(Start: 20 @8497 has 69 MA's), (66, 8587), (68, 8593), (86, 8647), (88, 8650), (103, 8689), (138, 8809), (146, 8833), (163, 8905), (166, 8911),

Gene: Lutum_12 Start: 7041, Stop: 7451, Start Num: 27

Candidate Starts for Lutum_12:

(4, 6912), (8, 6957), (9, 6963), (10, 6969), (12, 6987), (14, 7005), (Start: 27 @7041 has 32 MA's), (46, 7068), (67, 7113), (70, 7119), (85, 7173), (100, 7212), (103, 7218), (111, 7239), (124, 7290), (128, 7302),

Gene: Lynlen_11 Start: 7928, Stop: 8323, Start Num: 36

Candidate Starts for Lynlen_11:

(Start: 36 @7928 has 48 MA's), (57, 7967), (101, 8072), (133, 8171), (143, 8204), (166, 8297),

Gene: MaGuCo_11 Start: 7435, Stop: 7851, Start Num: 20

Candidate Starts for MaGuCo_11:

(Start: 20 @7435 has 69 MA's), (25, 7444), (29, 7450), (41, 7474), (70, 7537), (111, 7651), (158, 7801),

Gene: Mabodamaca_11 Start: 8555, Stop: 8968, Start Num: 20

Candidate Starts for Mabodamaca_11:

(Start: 20 @8555 has 69 MA's), (86, 8696),

Gene: Maja_11 Start: 8064, Stop: 8444, Start Num: 34

Candidate Starts for Maja_11:

(Start: 34 @8064 has 24 MA's), (59, 8112), (74, 8142), (99, 8208), (109, 8229), (111, 8235), (141, 8337), (153, 8373), (161, 8406),

Gene: Makima_14 Start: 9103, Stop: 9495, Start Num: 34

Candidate Starts for Makima_14:

(Start: 34 @9103 has 24 MA's), (67, 9166), (101, 9259), (112, 9289), (127, 9343), (128, 9346), (129, 9349), (143, 9385), (168, 9487),

Gene: Makoto_10 Start: 7514, Stop: 7924, Start Num: 23

Candidate Starts for Makoto_10:

(Start: 23 @7514 has 66 MA's), (72, 7607), (86, 7646), (93, 7661), (110, 7706), (120, 7748), (127, 7769), (158, 7865),

Gene: Malisha_12 Start: 8091, Stop: 8501, Start Num: 27

Candidate Starts for Malisha_12:

(8, 8007), (9, 8013), (Start: 27 @8091 has 32 MA's), (70, 8169), (75, 8181), (85, 8223), (100, 8262), (103, 8268), (109, 8283), (111, 8289), (120, 8328), (128, 8352), (149, 8406),

Gene: MamaPearl_10 Start: 7558, Stop: 7971, Start Num: 23
Candidate Starts for MamaPearl_10:
(Start: 23 @7558 has 66 MA's), (57, 7621), (93, 7705), (110, 7750), (111, 7753), (120, 7792), (144, 7852), (158, 7909),

Gene: MargaretKali_12 Start: 8078, Stop: 8455, Start Num: 34
Candidate Starts for MargaretKali_12:
(Start: 34 @8078 has 24 MA's), (64, 8135), (99, 8219), (109, 8240), (111, 8246), (120, 8285), (139, 8342), (141, 8348), (153, 8384), (161, 8417),

Gene: Maria1952_10 Start: 7547, Stop: 7984, Start Num: 20
Candidate Starts for Maria1952_10:
(Start: 20 @7547 has 69 MA's), (Start: 23 @7553 has 66 MA's), (48, 7592), (49, 7595), (86, 7688), (93, 7703), (97, 7715), (100, 7724), (101, 7727), (110, 7748), (158, 7907),

Gene: Marteena_13 Start: 8269, Stop: 8655, Start Num: 33
Candidate Starts for Marteena_13:
(Start: 33 @8269 has 23 MA's), (62, 8326),

Gene: Maureen_11 Start: 7496, Stop: 7915, Start Num: 19
Candidate Starts for Maureen_11:
(Start: 19 @7496 has 48 MA's), (29, 7514), (70, 7601), (111, 7715), (158, 7865),

Gene: MeganNoll_14 Start: 10429, Stop: 10842, Start Num: 23
Candidate Starts for MeganNoll_14:
(Start: 23 @10429 has 66 MA's), (86, 10564), (93, 10579), (101, 10603), (110, 10624), (120, 10666), (158, 10783),

Gene: Melons_13 Start: 8497, Stop: 8940, Start Num: 20
Candidate Starts for Melons_13:
(Start: 20 @8497 has 69 MA's), (66, 8587), (68, 8593), (86, 8647), (88, 8650), (103, 8689), (138, 8809), (146, 8833), (163, 8905), (166, 8911),

Gene: Milomuff_12 Start: 8297, Stop: 8692, Start Num: 36
Candidate Starts for Milomuff_12:
(6, 8171), (Start: 36 @8297 has 48 MA's), (57, 8336), (72, 8363), (101, 8441), (133, 8540), (143, 8573), (166, 8666),

Gene: MiniMommy_10 Start: 7286, Stop: 7681, Start Num: 21
Candidate Starts for MiniMommy_10:
(Start: 21 @7286 has 4 MA's), (109, 7478),

Gene: Mireles_13 Start: 7499, Stop: 7891, Start Num: 34
Candidate Starts for Mireles_13:
(Start: 34 @7499 has 24 MA's), (101, 7655), (112, 7685), (128, 7742), (129, 7745), (168, 7883),

Gene: Misaeng_14 Start: 10498, Stop: 10908, Start Num: 27
Candidate Starts for Misaeng_14:
(Start: 27 @10498 has 32 MA's), (93, 10642), (96, 10651), (97, 10654), (109, 10684), (111, 10690), (118, 10723), (158, 10846), (163, 10870),

Gene: MissSwiss_12 Start: 9018, Stop: 9434, Start Num: 20
Candidate Starts for MissSwiss_12:

(Start: 20 @9018 has 69 MA's), (47, 9066), (111, 9234),

Gene: Moki_10 Start: 7516, Stop: 7926, Start Num: 23

Candidate Starts for Moki_10:

(Start: 23 @7516 has 66 MA's), (86, 7648), (93, 7663), (110, 7708), (111, 7711), (120, 7750), (158, 7867),

Gene: Morkie_11 Start: 6561, Stop: 6944, Start Num: 30

Candidate Starts for Morkie_11:

(Start: 30 @6561 has 11 MA's), (58, 6615), (61, 6621), (66, 6633), (76, 6657), (99, 6717), (140, 6834), (143, 6840), (167, 6930),

Gene: MortyNRick_12 Start: 7390, Stop: 7773, Start Num: 30

Candidate Starts for MortyNRick_12:

(Start: 30 @7390 has 11 MA's), (58, 7444), (61, 7450), (66, 7462), (76, 7486), (143, 7669), (167, 7759),

Gene: Moss_12 Start: 8547, Stop: 8966, Start Num: 18

Candidate Starts for Moss_12:

(Start: 18 @8547 has 17 MA's), (41, 8589), (144, 8871),

Gene: MrBoss_14 Start: 10441, Stop: 10809, Start Num: 51

Candidate Starts for MrBoss_14:

(Start: 23 @10399 has 66 MA's), (Start: 51 @10441 has 4 MA's), (86, 10528), (93, 10543), (158, 10747),

Gene: MrGloopy_14 Start: 10362, Stop: 10775, Start Num: 23

Candidate Starts for MrGloopy_14:

(Start: 23 @10362 has 66 MA's), (86, 10497), (93, 10512), (110, 10557), (120, 10599), (158, 10716),

Gene: MsUbiquitous_11 Start: 7951, Stop: 8346, Start Num: 36

Candidate Starts for MsUbiquitous_11:

(6, 7825), (Start: 36 @7951 has 48 MA's), (57, 7990), (72, 8017), (101, 8095), (143, 8227), (166, 8320),

Gene: Mudpuppy_12 Start: 9039, Stop: 9452, Start Num: 19

Candidate Starts for Mudpuppy_12:

(Start: 19 @9039 has 48 MA's), (55, 9108), (112, 9258), (149, 9369), (158, 9402),

Gene: Mysterium_12 Start: 8548, Stop: 8967, Start Num: 18

Candidate Starts for Mysterium_12:

(Start: 18 @8548 has 17 MA's), (41, 8590), (111, 8767), (144, 8872),

Gene: Nancia_10 Start: 7514, Stop: 7924, Start Num: 23

Candidate Starts for Nancia_10:

(Start: 23 @7514 has 66 MA's), (72, 7607), (86, 7646), (93, 7661), (110, 7706), (120, 7748), (127, 7769), (158, 7865),

Gene: Nebkiss_9 Start: 7643, Stop: 8014, Start Num: 34

Candidate Starts for Nebkiss_9:

(Start: 34 @7643 has 24 MA's), (83, 7739), (91, 7760), (100, 7787), (101, 7790), (103, 7793), (109, 7808), (124, 7865), (128, 7877), (147, 7922), (160, 7982), (161, 7988), (163, 7994),

Gene: Nesbitt_11 Start: 7855, Stop: 8250, Start Num: 27

Candidate Starts for Nesbitt_11:

(Start: 27 @7855 has 32 MA's), (Start: 32 @7867 has 1 MA's), (48, 7888), (52, 7897), (70, 7936), (77, 7960), (89, 7981), (111, 8035), (129, 8101), (132, 8107), (151, 8164), (161, 8212),

Gene: Neuville_13 Start: 7727, Stop: 8119, Start Num: 34

Candidate Starts for Neuville_13:

(Start: 34 @7727 has 24 MA's), (80, 7826), (81, 7829), (100, 7880), (101, 7883), (128, 7970), (129, 7973), (161, 8087), (168, 8111),

Gene: Niblet_12 Start: 8281, Stop: 8721, Start Num: 20

Candidate Starts for Niblet_12:

(Start: 20 @8281 has 69 MA's), (66, 8371), (68, 8377), (80, 8413), (86, 8431), (88, 8434), (103, 8473), (128, 8566), (138, 8593), (146, 8617), (155, 8653), (163, 8689),

Gene: Nicky22_12 Start: 8359, Stop: 8754, Start Num: 36

Candidate Starts for Nicky22_12:

(Start: 36 @8359 has 48 MA's), (57, 8398), (83, 8455), (101, 8503), (143, 8635), (166, 8728),

Gene: Niobe_12 Start: 9019, Stop: 9429, Start Num: 19

Candidate Starts for Niobe_12:

(Start: 19 @9019 has 48 MA's), (55, 9088), (109, 9226), (112, 9238), (149, 9349), (158, 9382),

Gene: Nitro_12 Start: 9042, Stop: 9452, Start Num: 19

Candidate Starts for Nitro_12:

(Start: 19 @9042 has 48 MA's), (43, 9087), (55, 9111), (149, 9372), (158, 9405),

Gene: NoSwimming_13 Start: 9693, Stop: 10082, Start Num: 34

Candidate Starts for NoSwimming_13:

(Start: 34 @9693 has 24 MA's), (53, 9726), (109, 9861), (113, 9879), (149, 9990), (153, 10005),

Gene: Nubia_14 Start: 10412, Stop: 10822, Start Num: 27

Candidate Starts for Nubia_14:

(Start: 27 @10412 has 32 MA's), (93, 10556), (96, 10565), (97, 10568), (109, 10598), (111, 10604), (118, 10637), (158, 10760), (163, 10784),

Gene: ODay_12 Start: 7116, Stop: 7499, Start Num: 30

Candidate Starts for ODay_12:

(Start: 30 @7116 has 11 MA's), (Start: 37 @7131 has 14 MA's), (58, 7170), (61, 7176), (66, 7188), (76, 7212), (143, 7395), (167, 7485),

Gene: OMalley_10 Start: 7551, Stop: 7982, Start Num: 23

Candidate Starts for OMalley_10:

(Start: 20 @7545 has 69 MA's), (Start: 23 @7551 has 66 MA's), (35, 7572), (71, 7644), (93, 7701), (97, 7713), (100, 7722), (110, 7746), (158, 7905),

Gene: ObiToo_12 Start: 9222, Stop: 9635, Start Num: 19

Candidate Starts for ObiToo_12:

(Start: 19 @9222 has 48 MA's), (55, 9291), (109, 9429), (112, 9441), (149, 9552), (158, 9585),

Gene: Olliecat_11 Start: 8144, Stop: 8536, Start Num: 33

Candidate Starts for Olliecat_11:

(Start: 33 @8144 has 23 MA's), (48, 8159), (72, 8210), (91, 8258), (96, 8273), (117, 8339), (137, 8402), (140, 8411), (149, 8435), (160, 8492),

Gene: Oppalora_11 Start: 7902, Stop: 8342, Start Num: 20

Candidate Starts for Oppalora_11:

(Start: 20 @7902 has 69 MA's), (50, 7953), (88, 8055), (89, 8058), (103, 8094), (105, 8100), (111, 8115), (128, 8187), (138, 8214), (163, 8313), (166, 8319), (168, 8331),

Gene: Orcanus_12 Start: 8285, Stop: 8725, Start Num: 20

Candidate Starts for Orcanus_12:

(Start: 15 @8273 has 1 MA's), (Start: 20 @8285 has 69 MA's), (66, 8375), (80, 8417), (86, 8435), (88, 8438), (103, 8477), (128, 8570), (138, 8597), (146, 8621), (155, 8657), (163, 8693),

Gene: Origami_11 Start: 7283, Stop: 7678, Start Num: 21

Candidate Starts for Origami_11:

(Start: 21 @7283 has 4 MA's), (109, 7475),

Gene: OtsoOtso_12 Start: 8336, Stop: 8779, Start Num: 20

Candidate Starts for OtsoOtso_12:

(Start: 20 @8336 has 69 MA's), (66, 8426), (68, 8432), (86, 8486), (88, 8489), (103, 8528), (138, 8648), (146, 8672), (163, 8744), (166, 8750),

Gene: OurGirlNessie_10 Start: 7505, Stop: 7915, Start Num: 23

Candidate Starts for OurGirlNessie_10:

(Start: 23 @7505 has 66 MA's), (72, 7598), (86, 7637), (93, 7652), (110, 7697), (120, 7739), (127, 7760), (158, 7856),

Gene: Oxynfrius_14 Start: 10425, Stop: 10835, Start Num: 27

Candidate Starts for Oxynfrius_14:

(Start: 27 @10425 has 32 MA's), (93, 10569), (96, 10578), (97, 10581), (109, 10611), (111, 10617), (118, 10650), (158, 10773), (163, 10797),

Gene: PFR1_09 Start: 7693, Stop: 8106, Start Num: 26

Candidate Starts for PFR1_09:

(26, 7693), (44, 7720), (Start: 51 @7732 has 4 MA's), (52, 7735), (70, 7771), (75, 7783), (80, 7810), (85, 7825), (95, 7849), (98, 7861), (106, 7882), (121, 7933), (131, 7963), (143, 7996),

Gene: PFR2_09 Start: 7693, Stop: 8106, Start Num: 26

Candidate Starts for PFR2_09:

(26, 7693), (44, 7720), (Start: 51 @7732 has 4 MA's), (52, 7735), (70, 7771), (75, 7783), (80, 7810), (85, 7825), (95, 7849), (98, 7861), (106, 7882), (121, 7933), (131, 7963), (143, 7996),

Gene: PandaPo_12 Start: 9018, Stop: 9434, Start Num: 20

Candidate Starts for PandaPo_12:

(Start: 20 @9018 has 69 MA's), (47, 9066), (111, 9234),

Gene: PartyCup_14 Start: 10446, Stop: 10856, Start Num: 23

Candidate Starts for PartyCup_14:

(Start: 23 @10446 has 66 MA's), (Start: 51 @10488 has 4 MA's), (93, 10590), (158, 10794),

Gene: PastaFagioli_11 Start: 7991, Stop: 8389, Start Num: 37

Candidate Starts for PastaFagioli_11:

(Start: 37 @7991 has 14 MA's), (57, 8030), (133, 8237), (159, 8342),

Gene: Pecas_11 Start: 7912, Stop: 8307, Start Num: 36

Candidate Starts for Pecas_11:

(Start: 36 @7912 has 48 MA's), (57, 7951), (72, 7978), (92, 8029), (101, 8056), (143, 8188), (166, 8281),

Gene: Pelletreau_13 Start: 8491, Stop: 8931, Start Num: 20

Candidate Starts for Pelletreau_13:

(Start: 15 @8479 has 1 MA's), (Start: 20 @8491 has 69 MA's), (66, 8581), (80, 8623), (86, 8641), (88, 8644), (103, 8683), (128, 8776), (138, 8803), (146, 8827), (155, 8863), (163, 8899),

Gene: Percival_11 Start: 9171, Stop: 9593, Start Num: 19

Candidate Starts for Percival_11:

(Start: 19 @9171 has 48 MA's), (70, 9264), (72, 9270), (77, 9285), (109, 9375), (118, 9414), (125, 9432), (159, 9543),

Gene: Periwinkle_12 Start: 7041, Stop: 7433, Start Num: 27

Candidate Starts for Periwinkle_12:

(4, 6912), (8, 6957), (9, 6963), (10, 6969), (Start: 27 @7041 has 32 MA's), (46, 7068), (63, 7107), (67, 7113), (70, 7119), (75, 7131), (85, 7155), (100, 7194), (103, 7200), (108, 7212), (111, 7221), (124, 7272), (128, 7284),

Gene: Phabuloso_12 Start: 7046, Stop: 7438, Start Num: 27

Candidate Starts for Phabuloso_12:

(4, 6917), (8, 6962), (9, 6968), (10, 6974), (12, 6992), (14, 7010), (Start: 27 @7046 has 32 MA's), (46, 7073), (67, 7118), (70, 7124), (75, 7136), (85, 7160), (100, 7199), (103, 7205), (109, 7220), (111, 7226), (124, 7277), (128, 7289), (149, 7343),

Gene: PhigPhack_11 Start: 7940, Stop: 8335, Start Num: 36

Candidate Starts for PhigPhack_11:

(Start: 36 @7940 has 48 MA's), (72, 8006), (101, 8084), (133, 8183), (143, 8216), (166, 8309),

Gene: PhirstandPhine_13 Start: 8497, Stop: 8940, Start Num: 20

Candidate Starts for PhirstandPhine_13:

(Start: 20 @8497 has 69 MA's), (66, 8587), (68, 8593), (86, 8647), (88, 8650), (103, 8689), (138, 8809), (146, 8833), (163, 8905), (166, 8911),

Gene: Phisb_11 Start: 7905, Stop: 8300, Start Num: 36

Candidate Starts for Phisb_11:

(Start: 36 @7905 has 48 MA's), (57, 7944), (72, 7971), (101, 8049), (133, 8148), (143, 8181), (166, 8274),

Gene: Phistory_12 Start: 7030, Stop: 7422, Start Num: 27

Candidate Starts for Phistory_12:

(4, 6901), (8, 6946), (9, 6952), (10, 6958), (12, 6976), (14, 6994), (Start: 27 @7030 has 32 MA's), (46, 7057), (67, 7102), (70, 7108), (75, 7120), (85, 7144), (103, 7189), (109, 7204), (111, 7210), (124, 7261), (128, 7273),

Gene: Phives_13 Start: 10124, Stop: 10537, Start Num: 19

Candidate Starts for Phives_13:

(Start: 19 @10124 has 48 MA's), (43, 10169), (112, 10343), (149, 10454), (158, 10487),

Gene: PhluffyCoco_11 Start: 7902, Stop: 8342, Start Num: 20

Candidate Starts for PhluffyCoco_11:

(Start: 20 @7902 has 69 MA's), (50, 7953), (88, 8055), (89, 8058), (103, 8094), (105, 8100), (111, 8115), (128, 8187), (138, 8214), (163, 8313), (166, 8319), (168, 8331),

Gene: PhorbesPhlower_11 Start: 6561, Stop: 6944, Start Num: 30

Candidate Starts for PhorbesPhlower_11:

(Start: 30 @6561 has 11 MA's), (58, 6615), (61, 6621), (66, 6633), (76, 6657), (99, 6717), (140, 6834), (143, 6840), (167, 6930),

Gene: Pigu_11 Start: 7154, Stop: 7531, Start Num: 34

Candidate Starts for Pigu_11:

(Start: 34 @7154 has 24 MA's), (64, 7211), (74, 7229), (99, 7295), (109, 7316), (111, 7322), (141, 7424), (153, 7460), (161, 7493),

Gene: Pineda_13 Start: 8497, Stop: 8940, Start Num: 20

Candidate Starts for Pineda_13:

(Start: 20 @8497 has 69 MA's), (66, 8587), (68, 8593), (86, 8647), (88, 8650), (103, 8689), (138, 8809), (146, 8833), (163, 8905), (166, 8911),

Gene: PinkFriday_10 Start: 7548, Stop: 7982, Start Num: 20

Candidate Starts for PinkFriday_10:

(Start: 20 @7548 has 69 MA's), (Start: 23 @7554 has 66 MA's), (86, 7686), (93, 7701), (97, 7713), (100, 7722), (101, 7725), (110, 7746), (158, 7905),

Gene: PitaDog_10 Start: 7505, Stop: 7915, Start Num: 23

Candidate Starts for PitaDog_10:

(Start: 23 @7505 has 66 MA's), (72, 7598), (86, 7637), (93, 7652), (110, 7697), (120, 7739), (127, 7760), (158, 7856),

Gene: Pixelle_12 Start: 9067, Stop: 9480, Start Num: 19

Candidate Starts for Pixelle_12:

(Start: 19 @9067 has 48 MA's), (43, 9112), (149, 9397), (158, 9430),

Gene: Polka_12 Start: 8336, Stop: 8779, Start Num: 20

Candidate Starts for Polka_12:

(Start: 20 @8336 has 69 MA's), (66, 8426), (68, 8432), (86, 8486), (88, 8489), (103, 8528), (138, 8648), (146, 8672), (163, 8744), (166, 8750),

Gene: Pollux_13 Start: 8269, Stop: 8655, Start Num: 33

Candidate Starts for Pollux_13:

(Start: 33 @8269 has 23 MA's), (62, 8326),

Gene: PondAmelia_14 Start: 8160, Stop: 8555, Start Num: 36

Candidate Starts for PondAmelia_14:

(6, 8034), (Start: 36 @8160 has 48 MA's), (Start: 39 @8163 has 11 MA's), (71, 8223), (72, 8226), (149, 8454), (156, 8487), (159, 8508),

Gene: Posh_13 Start: 8263, Stop: 8655, Start Num: 33

Candidate Starts for Posh_13:

(11, 8182), (Start: 33 @8263 has 23 MA's),

Gene: Potatoes_14 Start: 10423, Stop: 10836, Start Num: 23

Candidate Starts for Potatoes_14:

(Start: 23 @10423 has 66 MA's), (86, 10558), (93, 10573), (110, 10618), (120, 10660), (158, 10777),

Gene: Powerpuff_12 Start: 9090, Stop: 9503, Start Num: 19

Candidate Starts for Powerpuff_12:

(Start: 19 @9090 has 48 MA's), (55, 9159), (112, 9309), (149, 9420), (158, 9453),

Gene: PrairieDogTown_12 Start: 8746, Stop: 9135, Start Num: 34

Candidate Starts for PrairieDogTown_12:

(Start: 34 @8746 has 24 MA's), (99, 8893), (120, 8959), (124, 8971),

Gene: Preamble_10 Start: 7515, Stop: 7925, Start Num: 23

Candidate Starts for Preamble_10:

(Start: 23 @7515 has 66 MA's), (86, 7647), (93, 7662), (111, 7710), (158, 7866),

Gene: Pterodactyl_10 Start: 7506, Stop: 7916, Start Num: 23

Candidate Starts for Pterodactyl_10:

(Start: 23 @7506 has 66 MA's), (72, 7599), (86, 7638), (93, 7653), (110, 7698), (120, 7740), (127, 7761), (158, 7857),

Gene: Pumancara_10 Start: 7547, Stop: 7981, Start Num: 20

Candidate Starts for Pumancara_10:

(Start: 20 @7547 has 69 MA's), (Start: 23 @7553 has 66 MA's), (86, 7685), (93, 7700), (97, 7712), (100, 7721), (101, 7724), (110, 7745), (158, 7904),

Gene: Pumpkins_12 Start: 9144, Stop: 9557, Start Num: 19

Candidate Starts for Pumpkins_12:

(Start: 19 @9144 has 48 MA's), (55, 9213), (149, 9474), (158, 9507),

Gene: Pytheas_13 Start: 8116, Stop: 8502, Start Num: 33

Candidate Starts for Pytheas_13:

(11, 8035), (Start: 33 @8116 has 23 MA's), (53, 8152), (62, 8173),

Gene: QMacho_12 Start: 8395, Stop: 8790, Start Num: 36

Candidate Starts for QMacho_12:

(Start: 36 @8395 has 48 MA's), (57, 8434), (72, 8461), (92, 8512), (101, 8539), (133, 8638), (143, 8671), (166, 8764),

Gene: Quenya_12 Start: 8046, Stop: 8447, Start Num: 37

Candidate Starts for Quenya_12:

(Start: 37 @8046 has 14 MA's), (101, 8196), (142, 8325), (143, 8328), (149, 8346), (156, 8379),

Gene: RAP15_14 Start: 10429, Stop: 10842, Start Num: 23

Candidate Starts for RAP15_14:

(Start: 23 @10429 has 66 MA's), (86, 10564), (93, 10579), (110, 10624), (120, 10666), (158, 10783),

Gene: Rattail_11 Start: 7953, Stop: 8393, Start Num: 20

Candidate Starts for Rattail_11:

(Start: 20 @7953 has 69 MA's), (88, 8106), (89, 8109), (103, 8145), (105, 8151), (111, 8166), (128, 8238), (138, 8265), (163, 8364), (166, 8370), (168, 8382),

Gene: RcigaStruga_14 Start: 10433, Stop: 10843, Start Num: 27

Candidate Starts for RcigaStruga_14:

(Start: 27 @10433 has 32 MA's), (93, 10577), (96, 10586), (97, 10589), (109, 10619), (111, 10625), (118, 10658), (158, 10781), (163, 10805),

Gene: RedFox_11 Start: 7902, Stop: 8342, Start Num: 20

Candidate Starts for RedFox_11:

(Start: 20 @7902 has 69 MA's), (50, 7953), (88, 8055), (89, 8058), (103, 8094), (105, 8100), (111, 8115), (128, 8187), (138, 8214), (163, 8313), (166, 8319), (168, 8331),

Gene: Reedo_12 Start: 9091, Stop: 9489, Start Num: 22

Candidate Starts for Reedo_12:

(Start: 22 @9091 has 2 MA's), (109, 9286), (111, 9292), (128, 9352), (158, 9442),

Gene: Renna12_12 Start: 8102, Stop: 8545, Start Num: 20

Candidate Starts for Renna12_12:

(Start: 20 @8102 has 69 MA's), (88, 8255), (89, 8258), (103, 8294), (105, 8300), (128, 8387), (138, 8414), (146, 8438), (166, 8519), (168, 8531),

Gene: Riovina_10 Start: 7551, Stop: 7982, Start Num: 23

Candidate Starts for Riovina_10:

(Start: 20 @7545 has 69 MA's), (Start: 23 @7551 has 66 MA's), (35, 7572), (71, 7644), (93, 7701), (97, 7713), (100, 7722), (110, 7746), (158, 7905),

Gene: Riverdale_14 Start: 10360, Stop: 10773, Start Num: 23

Candidate Starts for Riverdale_14:

(Start: 23 @10360 has 66 MA's), (86, 10495), (93, 10510), (110, 10555), (120, 10597), (158, 10714),

Gene: Roberts_13 Start: 7727, Stop: 8119, Start Num: 34

Candidate Starts for Roberts_13:

(Start: 34 @7727 has 24 MA's), (80, 7826), (81, 7829), (100, 7880), (101, 7883), (128, 7970), (129, 7973), (161, 8087), (168, 8111),

Gene: RockScotty_12 Start: 8547, Stop: 8966, Start Num: 18

Candidate Starts for RockScotty_12:

(Start: 18 @8547 has 17 MA's), (41, 8589), (144, 8871),

Gene: Rollins_10 Start: 7752, Stop: 8141, Start Num: 39

Candidate Starts for Rollins_10:

(Start: 39 @7752 has 11 MA's), (101, 7893), (109, 7911), (154, 8064), (156, 8073), (160, 8097), (168, 8127),

Gene: Rona_11 Start: 8141, Stop: 8542, Start Num: 37

Candidate Starts for Rona_11:

(Start: 37 @8141 has 14 MA's), (101, 8291), (136, 8405), (156, 8474),

Gene: Rooter_11 Start: 7146, Stop: 7523, Start Num: 34

Candidate Starts for Rooter_11:

(Start: 34 @7146 has 24 MA's), (89, 7260), (99, 7287), (109, 7308), (139, 7410), (141, 7416), (153, 7452), (161, 7485),

Gene: Rowa_11 Start: 7599, Stop: 8018, Start Num: 15

Candidate Starts for Rowa_11:

(Start: 15 @7599 has 1 MA's), (16, 7602), (Start: 27 @7620 has 32 MA's), (Start: 51 @7659 has 4 MA's), (75, 7710), (128, 7863), (132, 7872), (149, 7917), (151, 7929), (169, 8004),

Gene: Rozby_14 Start: 10360, Stop: 10773, Start Num: 23

Candidate Starts for Rozby_14:

(Start: 23 @10360 has 66 MA's), (86, 10495), (93, 10510), (110, 10555), (120, 10597), (158, 10714),

Gene: Ruchi_12 Start: 8591, Stop: 9034, Start Num: 20

Candidate Starts for Ruchi_12:

(Start: 20 @8591 has 69 MA's), (45, 8633), (54, 8651), (68, 8687), (86, 8741), (88, 8744), (103, 8783), (114, 8837), (128, 8876), (138, 8903), (146, 8927), (148, 8933),

Gene: SPB78_12 Start: 8026, Stop: 8427, Start Num: 29

Candidate Starts for SPB78_12:

(Start: 27 @8023 has 32 MA's), (29, 8026), (65, 8104), (67, 8110), (75, 8128), (86, 8155), (124, 8269),

Gene: Sabourin_12 Start: 8456, Stop: 8875, Start Num: 18

Candidate Starts for Sabourin_12:

(Start: 18 @8456 has 17 MA's), (41, 8498), (144, 8780),

Gene: SanaSana_12 Start: 8160, Stop: 8555, Start Num: 36

Candidate Starts for SanaSana_12:

(6, 8034), (Start: 36 @8160 has 48 MA's), (Start: 39 @8163 has 11 MA's), (71, 8223), (149, 8454), (156, 8487), (159, 8508),

Gene: SansAfet_11 Start: 7922, Stop: 8317, Start Num: 36

Candidate Starts for SansAfet_11:

(6, 7796), (Start: 36 @7922 has 48 MA's), (57, 7961), (72, 7988), (101, 8066), (133, 8165), (143, 8198), (166, 8291),

Gene: SarBear_11 Start: 7888, Stop: 8283, Start Num: 36

Candidate Starts for SarBear_11:

(6, 7762), (Start: 36 @7888 has 48 MA's), (57, 7927), (72, 7954), (101, 8032), (143, 8164), (166, 8257),

Gene: Sarge_11 Start: 7513, Stop: 7890, Start Num: 34

Candidate Starts for Sarge_11:

(Start: 34 @7513 has 24 MA's), (89, 7627), (99, 7654), (109, 7675), (139, 7777), (141, 7783), (153, 7819), (161, 7852),

Gene: Savage2526_14 Start: 10423, Stop: 10836, Start Num: 23

Candidate Starts for Savage2526_14:

(Start: 23 @10423 has 66 MA's), (86, 10558), (93, 10573), (110, 10618), (120, 10660), (158, 10777),

Gene: Schaffner_12 Start: 9132, Stop: 9545, Start Num: 19

Candidate Starts for Schaffner_12:

(Start: 19 @9132 has 48 MA's), (55, 9201), (149, 9462), (158, 9495),

Gene: Scotia_13 Start: 9699, Stop: 10088, Start Num: 34

Candidate Starts for Scotia_13:

(Start: 34 @9699 has 24 MA's), (53, 9732), (109, 9867), (113, 9885), (149, 9996), (153, 10011),

Gene: Scuttle_14 Start: 10429, Stop: 10842, Start Num: 23

Candidate Starts for Scuttle_14:

(Start: 23 @10429 has 66 MA's), (86, 10564), (93, 10579), (110, 10624), (120, 10666), (158, 10783),

Gene: Sergei_10 Start: 7547, Stop: 7984, Start Num: 20

Candidate Starts for Sergei_10:

(Start: 20 @7547 has 69 MA's), (Start: 23 @7553 has 66 MA's), (48, 7592), (49, 7595), (86, 7688), (93, 7703), (97, 7715), (100, 7724), (101, 7727), (110, 7748), (158, 7907),

Gene: ShakeltOph_11 Start: 7286, Stop: 7681, Start Num: 21

Candidate Starts for ShakeltOph_11:

(Start: 21 @7286 has 4 MA's), (109, 7478),

Gene: Shambre1_12 Start: 8782, Stop: 9204, Start Num: 32

Candidate Starts for Shambre1_12:

(Start: 32 @8782 has 1 MA's), (56, 8827), (60, 8836), (152, 9097), (168, 9163), (170, 9181),

Gene: Sharkboy_11 Start: 8140, Stop: 8541, Start Num: 37

Candidate Starts for Sharkboy_11:

(Start: 37 @8140 has 14 MA's), (101, 8290), (136, 8404), (156, 8473),

Gene: ShawBrad_12 Start: 7046, Stop: 7456, Start Num: 27

Candidate Starts for ShawBrad_12:

(4, 6917), (8, 6962), (9, 6968), (10, 6974), (12, 6992), (Start: 27 @7046 has 32 MA's), (46, 7073), (67, 7118), (70, 7124), (85, 7178), (100, 7217), (103, 7223), (111, 7244), (124, 7295), (128, 7307),

Gene: Shayna_10 Start: 7746, Stop: 8147, Start Num: 33

Candidate Starts for Shayna_10:

(Start: 33 @7746 has 23 MA's), (93, 7875), (109, 7917), (120, 7962), (146, 8037), (156, 8079), (160, 8103),

Gene: Shen_13 Start: 8492, Stop: 8932, Start Num: 20

Candidate Starts for Shen_13:

(Start: 15 @8480 has 1 MA's), (Start: 20 @8492 has 69 MA's), (66, 8582), (80, 8624), (86, 8642), (88, 8645), (103, 8684), (128, 8777), (138, 8804), (146, 8828), (155, 8864), (163, 8900),

Gene: Shoya_10 Start: 7149, Stop: 7526, Start Num: 34

Candidate Starts for Shoya_10:

(Start: 34 @7149 has 24 MA's), (89, 7263), (99, 7290), (109, 7311), (141, 7419), (153, 7455), (161, 7488),

Gene: Simpson_13 Start: 9040, Stop: 9453, Start Num: 19

Candidate Starts for Simpson_13:

(Start: 19 @9040 has 48 MA's), (55, 9109), (112, 9259), (149, 9370), (158, 9403),

Gene: SirBeanington_11 Start: 7914, Stop: 8309, Start Num: 36

Candidate Starts for SirBeanington_11:

(6, 7788), (Start: 36 @7914 has 48 MA's), (57, 7953), (72, 7980), (101, 8058), (133, 8157), (143, 8190), (166, 8283),

Gene: Skelbel_12 Start: 9019, Stop: 9429, Start Num: 19

Candidate Starts for Skelbel_12:

(Start: 19 @9019 has 48 MA's), (55, 9088), (109, 9226), (112, 9238), (149, 9349), (158, 9382),

Gene: Skylord_10 Start: 7692, Stop: 8081, Start Num: 39

Candidate Starts for Skylord_10:

(Start: 39 @7692 has 11 MA's), (101, 7833), (109, 7851), (154, 8004), (156, 8013), (160, 8037), (168, 8067),

Gene: Slay_11 Start: 8364, Stop: 8759, Start Num: 36

Candidate Starts for Slay_11:

(6, 8238), (Start: 36 @8364 has 48 MA's), (57, 8403), (72, 8430), (101, 8508), (143, 8640), (166, 8733),

Gene: Sleepyhead_12 Start: 7869, Stop: 8279, Start Num: 31

Candidate Starts for Sleepyhead_12:

(Start: 15 @7833 has 1 MA's), (Start: 31 @7869 has 2 MA's), (72, 7962), (85, 8004), (105, 8061), (109, 8070), (112, 8082), (123, 8124),

Gene: Snek_12 Start: 8127, Stop: 8540, Start Num: 20

Candidate Starts for Snek_12:

(Start: 20 @8127 has 69 MA's), (86, 8280), (166, 8523),

Gene: Softsoap_11 Start: 7911, Stop: 8306, Start Num: 36

Candidate Starts for Softsoap_11:

(6, 7785), (Start: 36 @7911 has 48 MA's), (57, 7950), (72, 7977), (101, 8055), (133, 8154), (143, 8187), (166, 8280),

Gene: Solea_12 Start: 8297, Stop: 8692, Start Num: 36

Candidate Starts for Solea_12:

(6, 8171), (Start: 36 @8297 has 48 MA's), (57, 8336), (72, 8363), (101, 8441), (133, 8540), (143, 8573), (166, 8666),

Gene: Soondubu_11 Start: 8928, Stop: 9338, Start Num: 20

Candidate Starts for Soondubu_11:

(Start: 20 @8928 has 69 MA's), (72, 9030), (158, 9291),

Gene: Sooty_12 Start: 8457, Stop: 8876, Start Num: 18

Candidate Starts for Sooty_12:

(Start: 18 @8457 has 17 MA's), (41, 8499), (144, 8781),

Gene: Spartoi_10 Start: 6599, Stop: 7030, Start Num: 31

Candidate Starts for Spartoi_10:

(Start: 31 @6599 has 2 MA's), (52, 6635), (66, 6668), (68, 6674), (75, 6689), (104, 6785),

Gene: SpecialK_12 Start: 8454, Stop: 8873, Start Num: 18

Candidate Starts for SpecialK_12:

(Start: 18 @8454 has 17 MA's), (41, 8496), (144, 8778),

Gene: Spooky_12 Start: 7039, Stop: 7449, Start Num: 27

Candidate Starts for Spooky_12:

(8, 6955), (9, 6961), (10, 6967), (Start: 27 @7039 has 32 MA's), (67, 7111), (70, 7117), (75, 7129), (85, 7171), (100, 7210), (103, 7216), (111, 7237), (120, 7276), (128, 7300), (149, 7354),

Gene: Squiddly_13 Start: 7726, Stop: 8118, Start Num: 27

Candidate Starts for Squiddly_13:

(4, 7597), (8, 7642), (9, 7648), (10, 7654), (12, 7672), (14, 7690), (Start: 27 @7726 has 32 MA's), (46, 7753), (67, 7798), (70, 7804), (75, 7816), (85, 7840), (103, 7885), (109, 7900), (111, 7906), (124, 7957), (128, 7969),

Gene: Squiracle_11 Start: 8143, Stop: 8535, Start Num: 33

Candidate Starts for Squiracle_11:

(Start: 33 @8143 has 23 MA's), (48, 8158), (72, 8209), (91, 8257), (96, 8272), (117, 8338), (137, 8401), (140, 8410), (149, 8434), (160, 8491),

Gene: Stellammi_9 Start: 6533, Stop: 6904, Start Num: 34

Candidate Starts for Stellammi_9:

(Start: 34 @6533 has 24 MA's), (61, 6581), (70, 6599), (75, 6611), (94, 6659), (101, 6680), (103, 6683), (120, 6743), (128, 6767), (146, 6809), (160, 6872), (161, 6878),

Gene: Stoor_11 Start: 8157, Stop: 8552, Start Num: 36

Candidate Starts for Stoor_11:

(6, 8031), (Start: 36 @8157 has 48 MA's), (Start: 39 @8160 has 11 MA's), (71, 8220), (149, 8451), (156, 8484), (159, 8505),

Gene: Stromboli_11 Start: 8161, Stop: 8556, Start Num: 36

Candidate Starts for Stromboli_11:

(Start: 36 @8161 has 48 MA's), (Start: 39 @8164 has 11 MA's), (71, 8224), (136, 8419), (149, 8455), (156, 8488), (159, 8509),

Gene: StuartMinion_11 Start: 7928, Stop: 8371, Start Num: 20

Candidate Starts for StuartMinion_11:

(Start: 15 @7916 has 1 MA's), (Start: 20 @7928 has 69 MA's), (73, 8036), (89, 8084), (103, 8120), (105, 8126), (128, 8213), (138, 8240), (163, 8339), (166, 8345), (168, 8357),

Gene: Studio_13 Start: 7486, Stop: 7878, Start Num: 34

Candidate Starts for Studio_13:

(Start: 34 @7486 has 24 MA's), (57, 7525), (58, 7528), (81, 7588), (100, 7639), (101, 7642), (129, 7732), (161, 7846), (168, 7870),

Gene: Stuu_12 Start: 8547, Stop: 8966, Start Num: 18

Candidate Starts for Stuu_12:

(Start: 18 @8547 has 17 MA's), (41, 8589), (111, 8766), (144, 8871),

Gene: SuMoo_10 Start: 7515, Stop: 7928, Start Num: 20

Candidate Starts for SuMoo_10:

(Start: 20 @7515 has 69 MA's),

Gene: Subaru_12 Start: 9019, Stop: 9429, Start Num: 19

Candidate Starts for Subaru_12:

(Start: 19 @9019 has 48 MA's), (55, 9088), (109, 9226), (112, 9238), (149, 9349), (158, 9382),

Gene: Sue2_12 Start: 9043, Stop: 9456, Start Num: 20

Candidate Starts for Sue2_12:

(13, 9007), (Start: 20 @9043 has 69 MA's),

Gene: SunnyD_10 Start: 7746, Stop: 8147, Start Num: 33

Candidate Starts for SunnyD_10:

(Start: 33 @7746 has 23 MA's), (93, 7875), (109, 7917), (146, 8037), (156, 8079), (160, 8103),

Gene: Supakev_10 Start: 7553, Stop: 7984, Start Num: 23

Candidate Starts for Supakev_10:

(Start: 20 @7547 has 69 MA's), (Start: 23 @7553 has 66 MA's), (35, 7574), (71, 7646), (97, 7715), (100, 7724), (110, 7748), (158, 7907),

Gene: SuperHands_12 Start: 9343, Stop: 9765, Start Num: 19

Candidate Starts for SuperHands_12:

(Start: 19 @9343 has 48 MA's), (70, 9436), (72, 9442), (77, 9457), (109, 9547), (118, 9586), (125, 9604), (159, 9715),

Gene: Suppi_14 Start: 10446, Stop: 10859, Start Num: 23

Candidate Starts for Suppi_14:

(Start: 23 @10446 has 66 MA's), (Start: 51 @10491 has 4 MA's), (93, 10593), (127, 10701), (158, 10797),

Gene: Swervy_11 Start: 7888, Stop: 8283, Start Num: 36

Candidate Starts for Swervy_11:

(6, 7762), (Start: 36 @7888 has 48 MA's), (57, 7927), (72, 7954), (101, 8032), (143, 8164), (166, 8257),

Gene: TMaxx_13 Start: 7597, Stop: 7989, Start Num: 34

Candidate Starts for TMaxx_13:

(Start: 34 @7597 has 24 MA's), (81, 7699), (85, 7711), (129, 7843), (168, 7981),

Gene: Tallboi_12 Start: 9050, Stop: 9463, Start Num: 19

Candidate Starts for Tallboi_12:

(Start: 19 @9050 has 48 MA's), (43, 9095), (55, 9119), (149, 9380), (158, 9413),

Gene: TattModd_14 Start: 10423, Stop: 10836, Start Num: 23

Candidate Starts for TattModd_14:

(Start: 23 @10423 has 66 MA's), (86, 10558), (93, 10573), (110, 10618), (120, 10660), (158, 10777),

Gene: TaylorSipht_12 Start: 8370, Stop: 8810, Start Num: 20

Candidate Starts for TaylorSipht_12:

(Start: 20 @8370 has 69 MA's), (Start: 39 @8406 has 11 MA's), (70, 8469), (88, 8523), (89, 8526), (103, 8562), (122, 8634), (126, 8646), (138, 8682), (146, 8706), (155, 8742), (163, 8778),

Gene: Tbone_12 Start: 9033, Stop: 9446, Start Num: 19

Candidate Starts for Tbone_12:

(Start: 19 @9033 has 48 MA's), (55, 9102), (112, 9252), (149, 9363), (158, 9396),

Gene: Teagster_10 Start: 7746, Stop: 8147, Start Num: 33

Candidate Starts for Teagster_10:

(Start: 33 @7746 has 23 MA's), (93, 7875), (109, 7917), (146, 8037), (156, 8079), (160, 8103),

Gene: Temper16_10 Start: 7547, Stop: 7984, Start Num: 20

Candidate Starts for Temper16_10:

(Start: 20 @7547 has 69 MA's), (Start: 23 @7553 has 66 MA's), (48, 7592), (49, 7595), (86, 7688), (93, 7703), (97, 7715), (100, 7724), (101, 7727), (110, 7748), (158, 7907),

Gene: TforTroy_12 Start: 9164, Stop: 9577, Start Num: 19

Candidate Starts for TforTroy_12:

(Start: 19 @9164 has 48 MA's), (149, 9494), (158, 9527),

Gene: ThursdayNight_11 Start: 7530, Stop: 7949, Start Num: 20

Candidate Starts for ThursdayNight_11:

(Start: 20 @7530 has 69 MA's), (48, 7581), (70, 7632), (112, 7752), (158, 7896),

Gene: Tian_12 Start: 9064, Stop: 9477, Start Num: 19

Candidate Starts for Tian_12:

(Start: 19 @9064 has 48 MA's), (43, 9109), (112, 9283), (149, 9394), (158, 9427),

Gene: Toad24_13 Start: 8492, Stop: 8932, Start Num: 20

Candidate Starts for Toad24_13:

(Start: 15 @8480 has 1 MA's), (Start: 20 @8492 has 69 MA's), (66, 8582), (80, 8624), (86, 8642), (88, 8645), (103, 8684), (128, 8777), (138, 8804), (146, 8828), (155, 8864), (163, 8900),

Gene: TripleC_16 Start: 11103, Stop: 11495, Start Num: 34

Candidate Starts for TripleC_16:

(Start: 34 @11103 has 24 MA's), (78, 11199), (101, 11259), (127, 11343), (128, 11346), (168, 11487),

Gene: Tuck_13 Start: 10079, Stop: 10489, Start Num: 19

Candidate Starts for Tuck_13:

(Start: 19 @10079 has 48 MA's), (43, 10124), (112, 10298), (149, 10409), (158, 10442),

Gene: TukTuk_11 Start: 7948, Stop: 8343, Start Num: 36

Candidate Starts for TukTuk_11:

(6, 7822), (Start: 36 @7948 has 48 MA's), (57, 7987), (72, 8014), (101, 8092), (143, 8224), (166, 8317),

Gene: Turab_12 Start: 9048, Stop: 9458, Start Num: 19

Candidate Starts for Turab_12:

(Start: 19 @9048 has 48 MA's), (43, 9093), (55, 9117), (149, 9378), (158, 9411),

Gene: Tutumahutu_12 Start: 9090, Stop: 9503, Start Num: 19

Candidate Starts for Tutumahutu_12:

(Start: 19 @9090 has 48 MA's), (55, 9159), (112, 9309), (149, 9420), (158, 9453),

Gene: Tweety19_12 Start: 8126, Stop: 8539, Start Num: 20

Candidate Starts for Tweety19_12:

(Start: 20 @8126 has 69 MA's), (86, 8279), (166, 8522),

Gene: Typha_18 Start: 11994, Stop: 12434, Start Num: 17

Candidate Starts for Typha_18:

(Start: 17 @11994 has 4 MA's), (Start: 19 @11997 has 48 MA's), (57, 12075), (61, 12084), (63, 12090), (66, 12096), (96, 12174), (116, 12240), (128, 12276), (152, 12351), (161, 12390),

Gene: Urla_10 Start: 7561, Stop: 7974, Start Num: 23

Candidate Starts for Urla_10:

(Start: 23 @7561 has 66 MA's), (86, 7693), (93, 7708), (110, 7753), (111, 7756), (120, 7795), (144, 7855), (158, 7912),

Gene: UtzChips_10 Start: 8204, Stop: 8620, Start Num: 20

Candidate Starts for UtzChips_10:

(Start: 20 @8204 has 69 MA's), (118, 8444), (138, 8501),

Gene: VResidence_12 Start: 9113, Stop: 9535, Start Num: 20

Candidate Starts for VResidence_12:

(Start: 20 @9113 has 69 MA's), (111, 9335), (136, 9422), (145, 9443), (149, 9452),

Gene: VWB_11 Start: 8079, Stop: 8474, Start Num: 30

Candidate Starts for VWB_11:

(24, 8073), (Start: 30 @8079 has 11 MA's), (40, 8094), (67, 8160), (101, 8244), (122, 8310), (166, 8454),

Gene: Vallejo_14 Start: 10361, Stop: 10774, Start Num: 23
Candidate Starts for Vallejo_14:
(Start: 23 @10361 has 66 MA's), (86, 10496), (93, 10511), (110, 10556), (120, 10598), (158, 10715),

Gene: Vitas_10 Start: 7692, Stop: 8081, Start Num: 39
Candidate Starts for Vitas_10:
(Start: 39 @7692 has 11 MA's), (101, 7833), (109, 7851), (154, 8004), (156, 8013), (160, 8037), (168, 8067),

Gene: VroomVroom_11 Start: 7298, Stop: 7693, Start Num: 21
Candidate Starts for VroomVroom_11:
(Start: 21 @7298 has 4 MA's), (109, 7490),

Gene: Vulpecula_12 Start: 8667, Stop: 9110, Start Num: 20
Candidate Starts for Vulpecula_12:
(Start: 20 @8667 has 69 MA's), (45, 8709), (54, 8727), (68, 8763), (86, 8817), (88, 8820), (103, 8859), (114, 8913), (128, 8952), (138, 8979), (146, 9003), (148, 9009),

Gene: Vulture_10 Start: 7551, Stop: 7982, Start Num: 23
Candidate Starts for Vulture_10:
(Start: 20 @7545 has 69 MA's), (Start: 23 @7551 has 66 MA's), (35, 7572), (71, 7644), (97, 7713), (100, 7722), (110, 7746), (158, 7905),

Gene: WalkingDead_11 Start: 8148, Stop: 8543, Start Num: 36
Candidate Starts for WalkingDead_11:
(Start: 36 @8148 has 48 MA's), (Start: 39 @8151 has 11 MA's), (71, 8211), (72, 8214), (149, 8442), (156, 8475), (159, 8496),

Gene: Warda_12 Start: 9036, Stop: 9449, Start Num: 19
Candidate Starts for Warda_12:
(Start: 19 @9036 has 48 MA's), (55, 9105), (112, 9255), (149, 9366), (158, 9399),

Gene: Wawa_14 Start: 10398, Stop: 10811, Start Num: 23
Candidate Starts for Wawa_14:
(Start: 23 @10398 has 66 MA's), (86, 10533), (93, 10548), (110, 10593), (120, 10635), (158, 10752),

Gene: Wayne_14 Start: 10492, Stop: 10905, Start Num: 23
Candidate Starts for Wayne_14:
(Start: 23 @10492 has 66 MA's), (Start: 51 @10537 has 4 MA's), (93, 10639), (127, 10747), (158, 10843),

Gene: Westrich_13 Start: 8480, Stop: 8920, Start Num: 20
Candidate Starts for Westrich_13:
(Start: 15 @8468 has 1 MA's), (Start: 20 @8480 has 69 MA's), (66, 8570), (80, 8612), (86, 8630), (88, 8633), (103, 8672), (128, 8765), (138, 8792), (146, 8816), (155, 8852), (163, 8888),

Gene: Whitney_12 Start: 7041, Stop: 7433, Start Num: 27
Candidate Starts for Whitney_12:
(4, 6912), (8, 6957), (9, 6963), (10, 6969), (12, 6987), (Start: 27 @7041 has 32 MA's), (46, 7068), (63, 7107), (67, 7113), (70, 7119), (75, 7131), (85, 7155), (100, 7194), (103, 7200), (108, 7212), (111, 7221), (124, 7272), (128, 7284),

Gene: Wildwest_13 Start: 9954, Stop: 10370, Start Num: 20

Candidate Starts for Wildwest_13:

(Start: 20 @9954 has 69 MA's), (86, 10107), (111, 10170), (145, 10278),

Gene: WileyE_11 Start: 8002, Stop: 8445, Start Num: 20

Candidate Starts for WileyE_11:

(Start: 20 @8002 has 69 MA's), (45, 8044), (54, 8062), (68, 8098), (86, 8152), (88, 8155), (103, 8194), (114, 8248), (128, 8287), (138, 8314), (146, 8338), (148, 8344),

Gene: WonderBoy_10 Start: 7514, Stop: 7924, Start Num: 23

Candidate Starts for WonderBoy_10:

(Start: 23 @7514 has 66 MA's), (57, 7577), (86, 7646), (93, 7661), (110, 7706), (120, 7748), (158, 7865),

Gene: Wrigley_13 Start: 8113, Stop: 8499, Start Num: 33

Candidate Starts for Wrigley_13:

(11, 8032), (Start: 33 @8113 has 23 MA's), (53, 8149), (62, 8170),

Gene: Yang_12 Start: 9134, Stop: 9547, Start Num: 19

Candidate Starts for Yang_12:

(Start: 19 @9134 has 48 MA's), (149, 9464), (158, 9497),

Gene: YesChef_12 Start: 9090, Stop: 9503, Start Num: 19

Candidate Starts for YesChef_12:

(Start: 19 @9090 has 48 MA's), (55, 9159), (112, 9309), (149, 9420), (158, 9453),

Gene: Zeta1847_10 Start: 7300, Stop: 7692, Start Num: 18

Candidate Starts for Zeta1847_10:

(Start: 18 @7300 has 17 MA's), (86, 7444), (90, 7453),

Gene: Zhuangyuan_13 Start: 8659, Stop: 9102, Start Num: 20

Candidate Starts for Zhuangyuan_13:

(Start: 15 @8647 has 1 MA's), (16, 8650), (Start: 20 @8659 has 69 MA's), (50, 8710), (70, 8758), (123, 8929), (124, 8932), (146, 8995), (149, 9004), (155, 9034), (168, 9088),

Gene: Zixiang_12 Start: 8281, Stop: 8721, Start Num: 20

Candidate Starts for Zixiang_12:

(Start: 20 @8281 has 69 MA's), (66, 8371), (68, 8377), (80, 8413), (86, 8431), (88, 8434), (103, 8473), (128, 8566), (138, 8593), (146, 8617), (155, 8653), (163, 8689),

Gene: Zorro_14 Start: 10377, Stop: 10790, Start Num: 23

Candidate Starts for Zorro_14:

(Start: 23 @10377 has 66 MA's), (86, 10512), (93, 10527), (110, 10572), (120, 10614), (158, 10731),