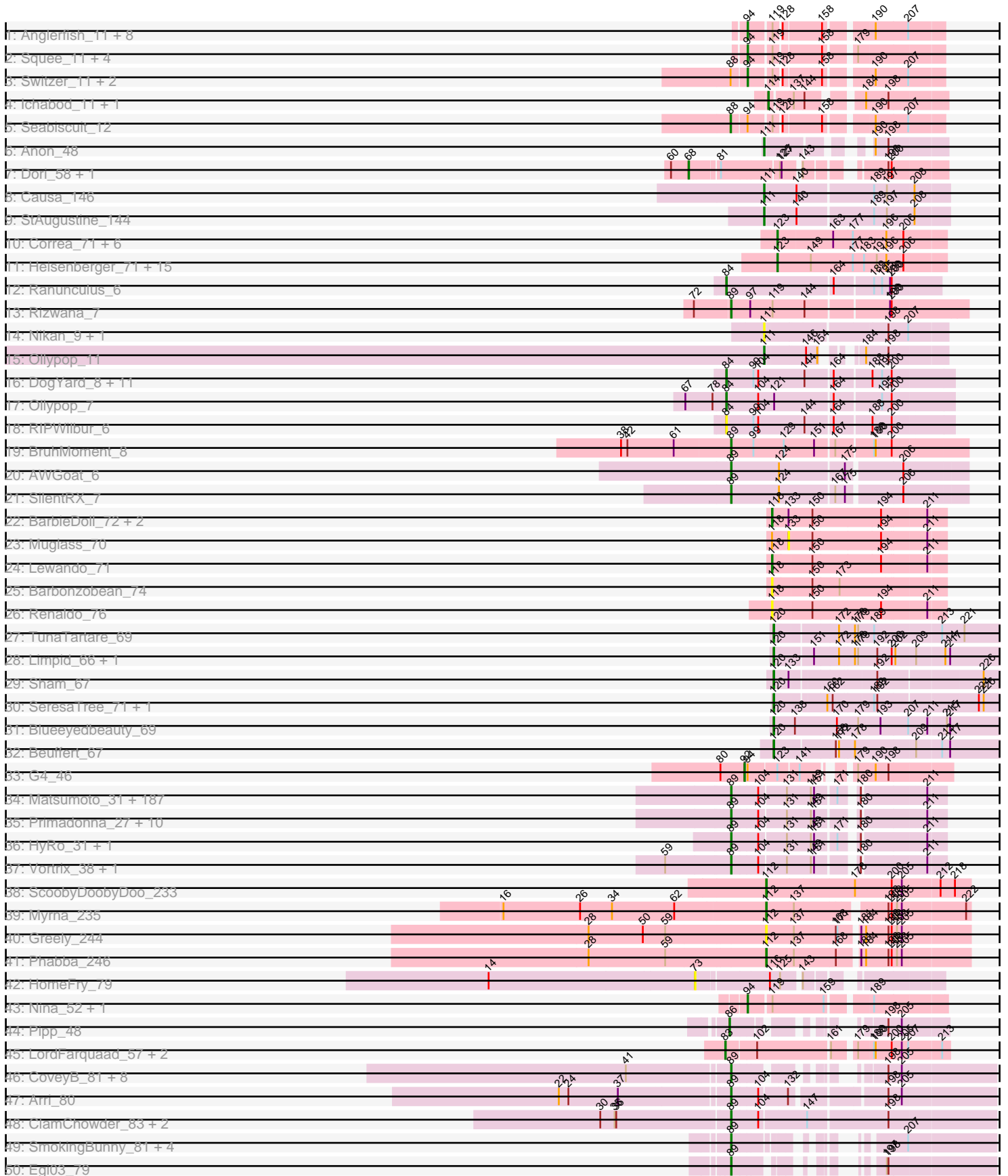
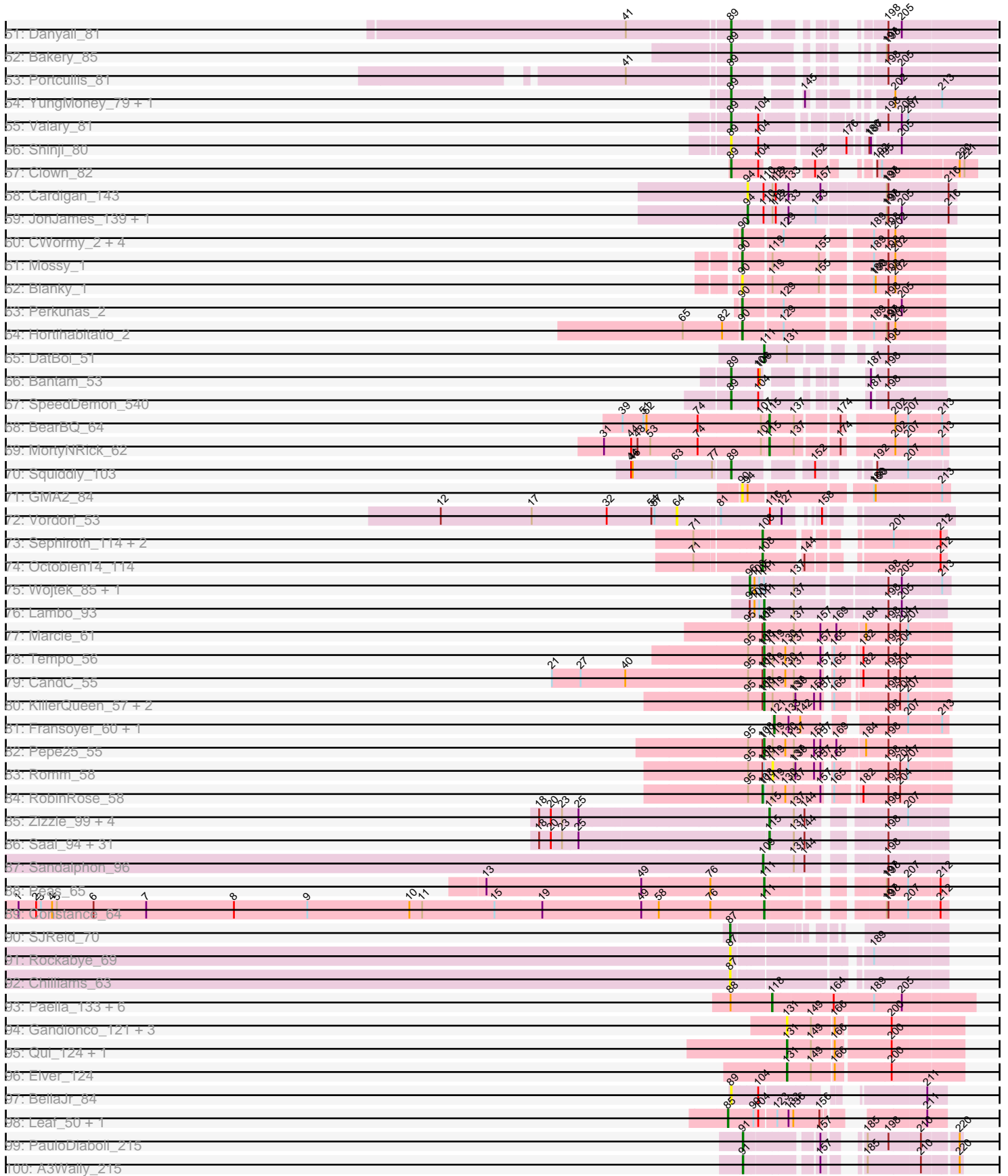


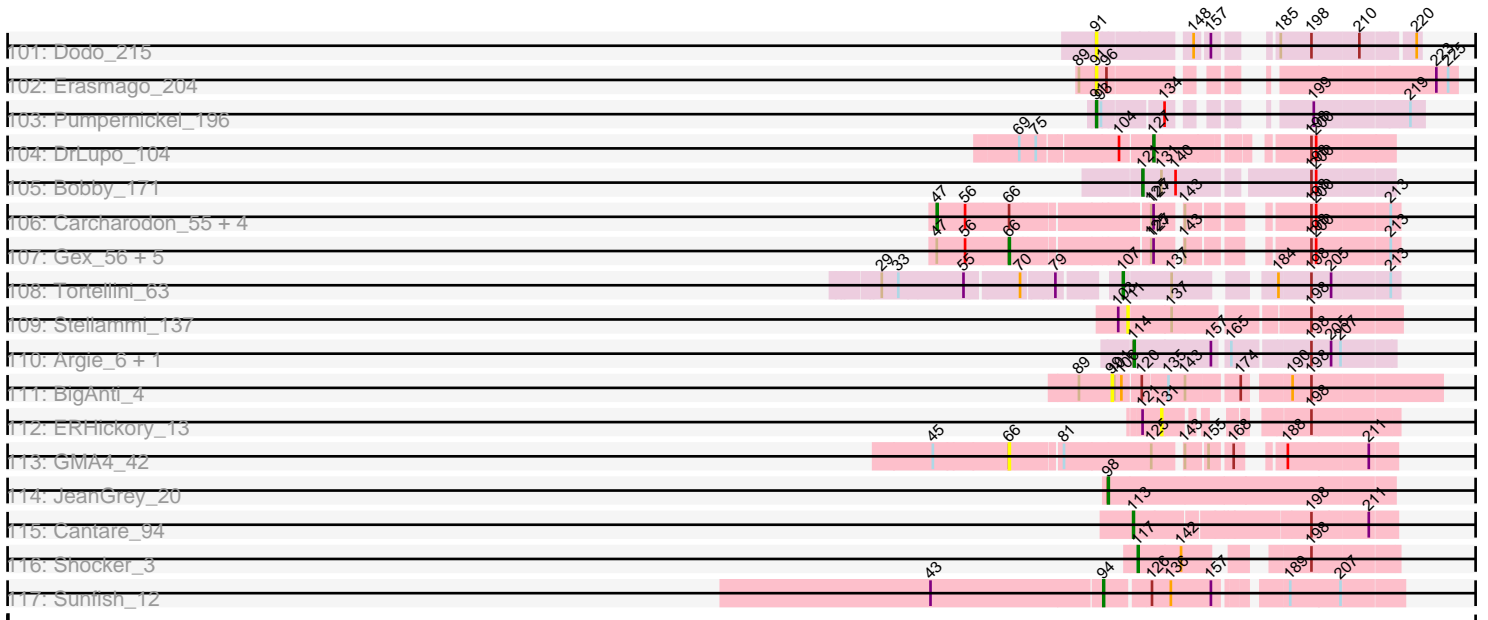
Pham 294329



Pham 294329



Pham 294329



Note: Tracks are now grouped by subcluster and scaled. Switching in subcluster is indicated by changes in track color. Track scale is now set by default to display the region 30 bp upstream of start 1 to 30 bp downstream of the last possible start. If this default region is judged to be packed too tightly with annotated starts, the track will be further scaled to only show that region of the ORF with annotated starts. This action will be indicated by adding "Zoomed" to the title. For starts, yellow indicates the location of called starts comprised solely of Glimmer/GeneMark auto-annotations, green indicates the location of called starts with at least 1 manual gene annotation.

Pham 294329 Report

This analysis was run 04/18/26 on database version 643.

Pham number 294329 has 454 members, 77 are drafts.

Phages represented in each track:

- Track 1 : Anglerfish_11, DreamCatcher_12, Dynamix_11, Arcanine_11, Rajelicia_10, PinkPlastic_9, McGuire_11, Slagathor_11, Manatee_11
- Track 2 : Squee_11, BeesKnees_11, Atkinbua_11, Naira_11, Fenn_11
- Track 3 : Switzer_11, KSSJEB_10, U2_10
- Track 4 : Ichabod_11, Briton15_12
- Track 5 : Seabiscuit_12
- Track 6 : Anon_48
- Track 7 : Dori_58, Mask_58
- Track 8 : Causa_146
- Track 9 : StAugustine_144
- Track 10 : Correa_71, Xenomorph_69, Arcadia_72, Cheesy_73, Nason_72, Elsa_72, Tribby_76
- Track 11 : Heisenberger_71, Mooshroom_73, Hankly_72, GoCrazy_69, Bowling_74, JEGGS_71, Circum_74, Kardesai_72, YoshiYama_74, NapoleonB_73, BenitoAntonio_71, Benllo_70, Dynamite_72, Mudcat_68, KeaneyLin_68, Stardom_72
- Track 12 : Ranunculus_6
- Track 13 : Rizwana_7
- Track 14 : Nikan_9, Ren19_8
- Track 15 : Ollypop_11
- Track 16 : DogYard_8, Forrestell_8, Pureglobe5_10, RazzB_7, MellowYellow_8, Pointis_8, Popstraw_8, Odyssey395_10, Beagle_10, PhuzzTulsa_6, Kubulix_9, BetaFish_8
- Track 17 : Ollypop_7
- Track 18 : RIPWilbur_6
- Track 19 : BruhMoment_8
- Track 20 : AWGoat_6
- Track 21 : SilentRX_7
- Track 22 : BarbieDoll_72, Biscute_68, Kinny_71
- Track 23 : Muglass_70
- Track 24 : Lewando_71
- Track 25 : Barbonzobean_74
- Track 26 : Renaldo_76
- Track 27 : TunaTartare_69
- Track 28 : Limpid_66, Annadreamy_67
- Track 29 : Sham_67
- Track 30 : SeresaTree_71, Faust_71
- Track 31 : Blueeyedbeauty_69

- Track 32 : Beuffert_67
- Track 33 : G4_46
- Track 34 : Matsumoto_31, JayJay_35, ArcherS7_31, Napoleon13_31, Erdmann_33, Specks_37, Tortoise16_31, Issimir_32, Shrimp_32, EmToTheThree_35, Koguma_28, CindyLou_32, Shnickers_32, CharlieB_32, SrishMeg2525_31, Daffodil_34, TinyTim_32, Spec_30, Atlantean_32, Norm_32, Sauce_33, NuevoMundo_35, BobaPhatt_29, Cactojaque_29, Audrick_34, Littleton_32, Chomp_32, BigCity_36, Breeniome_32, Jedediah_32, Halldule_28, Ewok_32, EasyJones_31, Dessert_30, Guwapp_32, FudgeTart_33, Demodog_30, Sebata_32, Quasimodo_32, Ngannou_30, Babyland_31, Ghost_32, BackyardAgain_29, Chargie21_31, Belieber_28, Roots515_32, Gizmo_34, Blackbrain_30, Maby2021_33, Catera_30, MikeLiesIn_32, Grungle_25, Drazdys_32, Mangeria_35, Montpel_31, Asterius_33, ET08_27, JustHall_31, Bigswole_38, Derek_33, Izajani_33, Bxz1_32, Iota_29, SmallFry_32, Phusco_32, EggyFarm_36, Concombre_31, ParkTD_31, Lunareta_31, Burrough_32, Lukilu_25, Jezreel_31, JulietS_27, JigglyPuff_32, YoungMoneyMata_32, Jessibeth14_31, Gabriel_32, Fludd_31, RoMag_27, Melpomini_31, Willis_32, Jemmno_32, Naval22_34, Nappy_33, Salacia_34, BadAgartude_33, Mikro_30, QBert_30, McGee_31, BeanWater_28, Teardrop_31, BananaFence_33, GlutenPhree_33, Fixie_29, Ablatia_31, SVoro_31, Rahel_32, IkeLoa_28, LifeSavor_33, Essence_31, Momo_31, Janiyr_32, Lethe_31, DTDevon_33, Bangla1971_31, Kboogie_32, Pleione_34, Lee7_31, Kamryn_32, Bonray_32, Ading_32, Yucca_32, Loanshark_32, Substance289_29, NedWong_33, Tyke_34, Trinitium_31, Delilah_32, StubbySaigey_31, ErnieJ_33, LolaVinca_35, Shaqato_28, Maturis_32, Gamgam_32, Capablanca_34, Pivoine_32, Zeenon_34, NoodleTree_31, EmmaElysia_30, Nidhogg_33, Cali_32, Duckfeet_29, Rocha_30, Spud_34, Labradorite_31, Yassified_29, Grasshills_36, Naija_32, LookingGlass_35, Phox_31, LRRHood_29, ZygoTaiga_32, MoMoMixon_33, InterFolia_39, Astraea_33, Bezza_24, Caravan_30, Pio_35, McWolfish_31, Phlegm_34, YemiJoy2021_33, OrediggerDelux_31, InigoMontoya_33, Morizzled23_31, Adlitam_32, ChickenPhender_31, Amataga_32, PurduePete_31, Sprinklers_32, Rizal_30, Patter_32, Zalkecks_34, Darko_31, Pier_34, Bread_33, Khaleesi_31, Bowman_31, Ronan_27, Fongie_32, Latch_32, FoxtrotP1_32, ShiaLabeouf_32, ValleyTerrace_32, ScottMcG_32, Basquiat_31, StephanieG_32, Turret_30, Blackdragon_27, Dandelion_36, SilverDipper_33, DrPhinkDaddy_32, Bipolarisk_31, JPickles_30, Wally_31, ChaylaJr_31, Megamind_32, Ava3_33, Jaygup_32
- Track 35 : Primadonna_27, Cleatunium_28, Tainan_37, Blubba_26, PharkleMinkus_37, LordLeafolot_38, FrayBell_38, I3_34, DirtMonster_31, Dietrick_27, Domi_27
- Track 36 : HyRo_31, Shifa_29
- Track 37 : Vortrix_38, Tonenili_36
- Track 38 : ScoobyDoobyDoo_233
- Track 39 : Myrna_235
- Track 40 : Greely_244
- Track 41 : Phabba_246
- Track 42 : HomeFry_79
- Track 43 : Nina_52, RedBaron_55
- Track 44 : Pipp_48
- Track 45 : LordFarquaad_57, Attis_55, SoilAssassin_55
- Track 46 : CoveyB_81, Gezellig_77, Phlop_78, CherryCola_80, RogerDodger_84, PullumCavea_79, Wizard_77, KimmyK_80, Halo3_78
- Track 47 : Arri_80
- Track 48 : ClamChowder_83, Fugax_84, Barb_83
- Track 49 : SmokingBunny_81, Salvador_80, Evamon_80, Togo_80, Twister6_81

- Track 50 : Egi03_79
- Track 51 : Danyall_81
- Track 52 : Bakery_85
- Track 53 : Portcullis_81
- Track 54 : YungMoney_79, Mutzi_78
- Track 55 : Valary_81
- Track 56 : Shinji_80
- Track 57 : Clown_82
- Track 58 : Cardigan_143
- Track 59 : JonJames_139, Yvonnetastic_136
- Track 60 : CWormy_2, ArtetaBall_2, Dialga_2, Untouchable_2, Crocheter_2
- Track 61 : Mossy_1
- Track 62 : Blanky_1
- Track 63 : Perkunas_2
- Track 64 : Hortihabitatio_2
- Track 65 : DatBoi_51
- Track 66 : Bantam_53
- Track 67 : SpeedDemon_540
- Track 68 : BearBQ_64
- Track 69 : MortyNRick_62
- Track 70 : Squiddly_103
- Track 71 : GMA2_84
- Track 72 : Vordorf_53
- Track 73 : Sephiroth_114, Kudefre_118, Syleon_119
- Track 74 : Octobien14_114
- Track 75 : Wojtek_85, ParvusTarda_93
- Track 76 : Lambo_93
- Track 77 : Marcie_61
- Track 78 : Tempo_56
- Track 79 : CandC_55
- Track 80 : KillerQueen_57, Kelcole_54, OneinaGillian_56
- Track 81 : Fransoyer_60, SadLad_63
- Track 82 : Pepe25_55
- Track 83 : Romm_58
- Track 84 : RobinRose_58
- Track 85 : Zizzle_99, Jennelsea_93, BobaPhett_98, ShiLan_99, Mattes_97
- Track 86 : Saal_94, Clifton_88, Nivrat_96, Philus_98, Burwell21_90, Whouxphf_100, Lizziana_97, NormanBulbieJr_94, Latretium_99, Brocalys_88, Yorick_92, Spoonbill_96, FreddyB_106, Maravista_93, Martik_95, LastJedi_87, Crumble_91, Pippy_94, LilMoolah_99, Cabrinians_93, Vivum_96, Minnie_91, James_100, OlympiaSaint_100, Blexus_93, SwagPigglett_98, Priscilla_97, ShowerHandel_97, Gorge_95, ByChance_87, Jarcob_99, Koella_89
- Track 87 : Sandalphon_96
- Track 88 : Peas_65
- Track 89 : Constance_64
- Track 90 : SJReid_70
- Track 91 : Rockabye_69
- Track 92 : Chilliams_63
- Track 93 : Paella_133, Gandionco_129, Marianna39_130, Elver_133, Qui_133, JeNeSaisPas_127, Kureo_130
- Track 94 : Gandionco_121, Marianna39_122, JeNeSaisPas_119, Kureo_122
- Track 95 : Qui_124, Paella_124
- Track 96 : Elver_124

- Track 97 : BellaJr_84
- Track 98 : Leaf_50, Dewdrop_50
- Track 99 : PauloDiaboli_215
- Track 100 : A3Wally_215
- Track 101 : Dodo_215
- Track 102 : Erasmago_204
- Track 103 : Pumpernickel_196
- Track 104 : DrLupo_104
- Track 105 : Bobby_171
- Track 106 : Carcharodon_55, Schnauzer_56, Phloss_53, Parmesanjohn_55, Smurph_55
- Track 107 : Gex_56, EGUicorn_51, Magsby_55, Xerxes_55, Pipsqueaks_56, Tessdabest_55
- Track 108 : Tortellini_63
- Track 109 : Stellammi_137
- Track 110 : Argie_6, GodPhather_6
- Track 111 : BigAnti_4
- Track 112 : ERHickory_13
- Track 113 : GMA4_42
- Track 114 : JeanGrey_20
- Track 115 : Cantare_94
- Track 116 : Shocker_3
- Track 117 : Sunfish_12

Summary of Final Annotations (See graph section above for start numbers):

The start number called the most often in the published annotations is 89, it was called in 203 of the 377 non-draft genes in the pham.

Genes that call this "Most Annotated" start:

• AWGoat_6, Ablatia_31, Ading_32, Adlitam_32, Amataga_32, ArcherS7_31, Arri_80, Asterius_33, Astraea_33, Atlantean_32, Audrick_34, Ava3_33, Babyland_31, BackyardAgain_29, BadAgartude_33, Bakery_85, BananaFence_33, Bangla1971_31, Bantam_53, Barb_83, Basquiat_31, BeanWater_28, Belieber_28, BellaJr_84, Bezza_24, BigCity_36, Bigswole_38, Bipolarisk_31, Blackbrain_30, Blackdragon_27, Blubba_26, BobaPhatt_29, Bonray_32, Bowman_31, Bread_33, Breeniome_32, BruhMoment_8, Burrough_32, Bxz1_32, Cactojaque_29, Cali_32, Capablanca_34, Caravan_30, Catera_30, Chargie21_31, CharlieB_32, ChaylaJr_31, CherryCola_80, ChickenPhender_31, Chomp_32, CindyLou_32, ClamChowder_83, Cleatunium_28, Clown_82, Concombre_31, CoveyB_81, DTDevon_33, Daffodil_34, Dandelion_36, Danyall_81, Darko_31, Delilah_32, Demodog_30, Derek_33, Dessert_30, Dietrick_27, DirtMonster_31, Domi_27, DrPhinkDaddy_32, Drazdys_32, Duckfeet_29, ET08_27, EasyJones_31, EggyFarm_36, Egi03_79, EmToTheThree_35, EmmaElysia_30, Erdmann_33, ErnieJ_33, Essence_31, Evamon_80, Ewok_32, Fixie_29, Fludd_31, Fongie_32, FoxtrotP1_32, FrayBell_38, FudgeTart_33, Fugax_84, Gabriel_32, Gamgam_32, Gezellig_77, Ghost_32, Gizmo_34, GlutenPhree_33, Grasshills_36, Grungle_25, Guwapp_32, Halldule_28, Halo3_78, HyRo_31, I3_34, IkeLoa_28, InigoMontoya_33, InterFolia_39, Iota_29, Issimir_32, Izajani_33, JPickles_30, Janiyra_32, JayJay_35, Jaygup_32, Jedediah_32, Jemmno_32, Jessibeth14_31, Jezreel_31, JigglyPuff_32, JulietS_27,

JustHall_31, Kamryn_32, Kboogie_32, Khaleesi_31, KimmyK_80, Koguma_28, LRRHood_29, Labradorite_31, Latch_32, Lee7_31, Lethe_31, LifeSavor_33, Littleton_32, Loanshark_32, LolaVinca_35, LookingGlass_35, LordLeafot_38, Lukilu_25, Lunareta_31, Maby2021_33, Mangeria_35, Matsumoto_31, Maturis_32, McGee_31, McWolfish_31, Megamind_32, Melpomini_31, MikeLiesIn_32, Mikro_30, MoMoMixon_33, Momo_31, Montpel_31, Morizzled23_31, Mutzi_78, Naija_32, Napoleon13_31, Nappy_33, Naval22_34, NedWong_33, Ngannou_30, Nidhogg_33, NoodleTree_31, Norm_32, NuevoMundo_35, OrediggerDelux_31, ParkTD_31, Patter_32, PharkleMinkus_37, Phlegm_34, Phlop_78, Phox_31, Phusco_32, Pier_34, Pio_35, Pivoine_32, Pleione_34, Portcullis_81, Primadonna_27, PullumCavea_79, PurduePete_31, QBert_30, Quasimodo_32, Rahel_32, Rizal_30, Rizwana_7, RoMag_27, Rocha_30, RogerDodger_84, Ronan_27, Roots515_32, SVoro_31, Salacia_34, Salvador_80, Sauce_33, ScottMcG_32, Sebata_32, Shaqnato_28, ShiaLabeouf_32, Shifa_29, Shinji_80, Shnickers_32, Shrimp_32, SilentRX_7, SilverDipper_33, SmallFry_32, SmokingBunny_81, Spec_30, Specks_37, SpeedDemon_540, Sprinklers_32, Spud_34, Squiddly_103, SrishMeg2525_31, StephanieG_32, StubbySaigey_31, Substance289_29, Tainan_37, Teardrop_31, TinyTim_32, Togo_80, Tonenili_36, Tortoise16_31, Trinitium_31, Turret_30, Twister6_81, Tyke_34, Valary_81, ValleyTerrace_32, Vortex_38, Wally_31, Willis_32, Wizard_77, Yassified_29, YemiJoy2021_33, YoungMoneyMata_32, Yucca_32, YungMoney_79, Zalkecks_34, Zeenon_34, ZygoTaiga_32,

Genes that have the "Most Annotated" start but do not call it:

- BigAnti_4, Erasmago_204,

Genes that do not have the "Most Annotated" start:

- A3Wally_215, Anglerfish_11, Annadreamy_67, Anon_48, Arcadia_72, Arcanine_11, Argie_6, ArtetaBall_2, Atkinbua_11, Attis_55, BarbieDoll_72, Barbonzobean_74, Beagle_10, BearBQ_64, BeesKnees_11, BenitoAntonio_71, Benllo_70, BetaFish_8, Beuffert_67, Biscute_68, Blanky_1, Blexus_93, Blueeyedbeauty_69, BobaPhett_98, Bobby_171, Bowling_74, Briton15_12, Brocalys_88, Burwell21_90, ByChance_87, CWormy_2, Cabrinians_93, CandC_55, Cantare_94, Carcharodon_55, Cardigan_143, Causa_146, Cheesy_73, Chilliams_63, Circum_74, Clifton_88, Constance_64, Correa_71, Crocheter_2, Crumble_91, DatBoi_51, Dewdrop_50, Dialga_2, Dodo_215, DogYard_8, Dori_58, DrLupo_104, DreamCatcher_12, Dynamite_72, Dynamix_11, EGUnicorn_51, ERHickory_13, Elsa_72, Elver_124, Elver_133, Faust_71, Fenn_11, Forrestell_8, Fransoyer_60, FreddyB_106, G4_46, GMA2_84, GMA4_42, Gandionco_121, Gandionco_129, Gex_56, GoCrazy_69, GodPhather_6, Gorge_95, Greely_244, Hankly_72, Heisenberger_71, HomeFry_79, Hortihabitatio_2, Ichabod_11, JEGGS_71, James_100, Jarcob_99, JeNeSaisPas_119, JeNeSaisPas_127, JeanGrey_20, Jennelsea_93, JonJames_139, KSSJEB_10, Kardesai_72, KeaneyLin_68, Kelcole_54, KillerQueen_57, Kinny_71, Koella_89, Kubulix_9, Kudfre_118, Kureo_122, Kureo_130, Lambo_93, LastJedi_87, Latretium_99, Leaf_50, Lewando_71, LilMoolah_99, Limpid_66, Lizziana_97, LordFarquaad_57, Magsby_55, Manatee_11, Maravista_93, Marcie_61, Marianna39_122, Marianna39_130, Martik_95, Mask_58, Mattes_97, McGuire_11, MellowYellow_8, Minnie_91, Mooshroom_73, MortyNRick_62, Mossy_1, Mudcat_68, Muglass_70, Myrna_235, Naira_11, NapoleonB_73, Nason_72, Nikan_9, Nina_52, Nivrat_96, NormanBulbieJr_94, Octobien14_114, Odyssey395_10, Ollypop_11, Ollypop_7, OlympiaSaint_100, OneinaGillian_56, Paella_124, Paella_133, Parmesanjohn_55, ParvusTarda_93, PauloDiaboli_215, Peas_65, Pepe25_55, Perkunas_2, Phabba_246, Philus_98, Phloss_53, PhuzzTulsa_6, PinkPlastic_9, Pipp_48, Pippy_94, Pipsqueaks_56, Pointis_8, Popstraw_8, Priscilla_97,

Pumpnickel_196, Pureglobe5_10, Qui_124, Qui_133, RIPWilbur_6, Rajelicia_10, Ranunculus_6, RazzB_7, RedBaron_55, Ren19_8, Renaldo_76, RobinRose_58, Rockabye_69, Romm_58, SJReid_70, Saal_94, SadLad_63, Sandalphon_96, Schnauzer_56, ScoobyDoobyDoo_233, Seabiscuit_12, Sephiroth_114, SeresaTree_71, Sham_67, ShiLan_99, Shocker_3, ShowerHandel_97, Slagathor_11, Smurph_55, SoilAssassin_55, Spoonbill_96, Squee_11, StAugustine_144, Stardom_72, Stellammi_137, Sunfish_12, SwagPigglett_98, Switzer_11, Syleon_119, Tempo_56, Tessdabest_55, Tortellini_63, Tribby_76, TunaTartare_69, U2_10, Untouchable_2, Vivum_96, Vordorf_53, Whouxphf_100, Wojtek_85, Xenomorph_69, Xerxes_55, Yorick_92, YoshiYama_74, Yvonnetastic_136, Zizzle_99,

Summary by start number:

Start 47:

- Found in 11 of 454 (2.4%) of genes in pham
- Manual Annotations of this start: 5 of 377
- Called 45.5% of time when present
- Phage (with cluster) where this start called: Carcharodon_55 (N), Parmesanjohn_55 (N), Phloss_53 (N), Schnauzer_56 (N), Smurph_55 (N),

Start 64:

- Found in 1 of 454 (0.2%) of genes in pham
- No Manual Annotations of this start.
- Called 100.0% of time when present
- Phage (with cluster) where this start called: Vordorf_53 (DT),

Start 66:

- Found in 12 of 454 (2.6%) of genes in pham
- Manual Annotations of this start: 5 of 377
- Called 58.3% of time when present
- Phage (with cluster) where this start called: EGUnicorn_51 (N), GMA4_42 (singleton), Gex_56 (N), Magsby_55 (N), Pipsqueaks_56 (N), Tessdabest_55 (N), Xerxes_55 (N),

Start 68:

- Found in 2 of 454 (0.4%) of genes in pham
- Manual Annotations of this start: 2 of 377
- Called 100.0% of time when present
- Phage (with cluster) where this start called: Dori_58 (AD), Mask_58 (AD),

Start 73:

- Found in 1 of 454 (0.2%) of genes in pham
- No Manual Annotations of this start.
- Called 100.0% of time when present
- Phage (with cluster) where this start called: HomeFry_79 (CR5),

Start 83:

- Found in 3 of 454 (0.7%) of genes in pham
- Manual Annotations of this start: 3 of 377
- Called 100.0% of time when present
- Phage (with cluster) where this start called: Attis_55 (CZ2), LordFarquaad_57 (CZ2), SoilAssassin_55 (CZ2),

Start 84:

- Found in 15 of 454 (3.3%) of genes in pham
- Manual Annotations of this start: 11 of 377
- Called 100.0% of time when present
- Phage (with cluster) where this start called: Beagle_10 (AP2), BetaFish_8 (AP2), DogYard_8 (AP2), Forrestell_8 (AP2), Kubulix_9 (AP2), MellowYellow_8 (AP2), Odyssey395_10 (AP2), Ollypop_7 (AP2), PhuzzTulsa_6 (AP2), Pointis_8 (AP2), Popstraw_8 (AP2), Pureglobe5_10 (AP2), RIPWilbur_6 (AP2), Ranunculus_6 (AP), RazzB_7 (AP2),

Start 85:

- Found in 2 of 454 (0.4%) of genes in pham
- Manual Annotations of this start: 2 of 377
- Called 100.0% of time when present
- Phage (with cluster) where this start called: Dewdrop_50 (GC), Leaf_50 (GC),

Start 86:

- Found in 1 of 454 (0.2%) of genes in pham
- Manual Annotations of this start: 1 of 377
- Called 100.0% of time when present
- Phage (with cluster) where this start called: Pipp_48 (CV),

Start 87:

- Found in 3 of 454 (0.7%) of genes in pham
- Manual Annotations of this start: 1 of 377
- Called 100.0% of time when present
- Phage (with cluster) where this start called: Chilliams_63 (FC), Rockabye_69 (FC), SJReid_70 (FC),

Start 88:

- Found in 11 of 454 (2.4%) of genes in pham
- Manual Annotations of this start: 1 of 377
- Called 9.1% of time when present
- Phage (with cluster) where this start called: Seabiscuit_12 (A1),

Start 89:

- Found in 240 of 454 (52.9%) of genes in pham
- Manual Annotations of this start: 203 of 377
- Called 99.2% of time when present
- Phage (with cluster) where this start called: AWGoat_6 (AP4), Ablatia_31 (C1), Ading_32 (C1), Adlitam_32 (C1), Amataga_32 (C1), ArcherS7_31 (C1), Arri_80 (DC1), Asterius_33 (C1), Astraea_33 (C1), Atlantean_32 (C1), Audrick_34 (C1), Ava3_33 (C1), Babyland_31 (C1), BackyardAgain_29 (C1), BadAgartude_33 (C1), Bakery_85 (DC1), BananaFence_33 (C1), Bangla1971_31 (C1), Bantam_53 (DL), Barb_83 (DC1), Basquiat_31 (C1), BeanWater_28 (C1), Belieber_28 (C1), BellaJr_84 (FN), Bezza_24 (C1), BigCity_36 (C1), Bigswole_38 (C1), Bipolarisk_31 (C1), Blackbrain_30 (C1), Blackdragon_27 (C1), Blubba_26 (C1), BobaPhatt_29 (C1), Bonray_32 (C1), Bowman_31 (C1), Bread_33 (C1), Breeniome_32 (C1), BruhMoment_8 (AP3), Burrough_32 (C1), Bxz1_32 (C1), Cactojaque_29 (C1), Cali_32 (C1), Capablanca_34 (C1), Caravan_30 (C1), Catera_30 (C1), Chargie21_31 (C1), CharlieB_32 (C1), ChaylaJr_31 (C1), CherryCola_80 (DC1), ChickenPhender_31 (C1), Chomp_32 (C1), CindyLou_32 (C1), ClamChowder_83 (DC1), Cleatunium_28 (C1), Clown_82 (DC2), Concombre_31 (C1), CoveyB_81

(DC1), DTDevon_33 (C1), Daffodil_34 (C1), Dandelion_36 (C1), Danyall_81 (DC1), Darko_31 (C1), Delilah_32 (C1), Demodog_30 (C1), Derek_33 (C1), Dessert_30 (C1), Dietrick_27 (C1), DirtMonster_31 (C1), Domi_27 (C1), DrPhinkDaddy_32 (C1), Drazdys_32 (C1), Duckfeet_29 (C1), ET08_27 (C1), EasyJones_31 (C1), EggyFarm_36 (C1), Egi03_79 (DC1), EmToTheThree_35 (C1), EmmaElysia_30 (C1), Erdmann_33 (C1), ErnieJ_33 (C1), Essence_31 (C1), Evamon_80 (DC1), Ewok_32 (C1), Fixie_29 (C1), Fludd_31 (C1), Fongie_32 (C1), FoxtrotP1_32 (C1), FrayBell_38 (C1), FudgeTart_33 (C1), Fugax_84 (DC1), Gabriel_32 (C1), Gamgam_32 (C1), Gezellig_77 (DC1), Ghost_32 (C1), Gizmo_34 (C1), GlutenPhree_33 (C1), Grasshills_36 (C1), Grungle_25 (C1), Guwapp_32 (C1), Haldule_28 (C1), Halo3_78 (DC1), HyRo_31 (C1), I3_34 (C1), IkeLoa_28 (C1), InigoMontoya_33 (C1), InterFolia_39 (C1), Iota_29 (C1), Issimir_32 (C1), Izajani_33 (C1), JPickles_30 (C1), Janiyra_32 (C1), JayJay_35 (C1), Jaygup_32 (C1), Jedediah_32 (C1), Jemmno_32 (C1), Jessibeth14_31 (C1), Jezreel_31 (C1), JigglyPuff_32 (C1), JulietS_27 (C1), JustHall_31 (C1), Kamryn_32 (C1), Kboogie_32 (C1), Khaleesi_31 (C1), KimmyK_80 (DC1), Koguma_28 (C1), LRRHood_29 (C1), Labradorite_31 (C1), Latch_32 (C1), Lee7_31 (C1), Lethe_31 (C1), LifeSavor_33 (C1), Littleton_32 (C1), Loanshark_32 (C1), LolaVinca_35 (C1), LookingGlass_35 (C1), LordLeafolot_38 (C1), Lukilu_25 (C1), Lunareta_31 (C1), Maby2021_33 (C1), Mangeria_35 (C1), Matsumoto_31 (C1), Maturis_32 (C1), McGee_31 (C1), McWolfish_31 (C1), Megamind_32 (C1), Melpomini_31 (C1), MikeLiesIn_32 (C1), Mikro_30 (C1), MoMoMixon_33 (C1), Momo_31 (C1), Montpel_31 (C1), Morizzled23_31 (C1), Mutzi_78 (DC1), Naija_32 (C1), Napoleon13_31 (C1), Nappy_33 (C1), Naval22_34 (C1), NedWong_33 (C1), Ngannou_30 (C1), Nidhogg_33 (C1), NoodleTree_31 (C1), Norm_32 (C1), NuevoMundo_35 (C1), OrediggerDelux_31 (C1), ParkTD_31 (C1), Patter_32 (C1), PharkleMinkus_37 (C1), Phlegm_34 (C1), Phlop_78 (DC1), Phox_31 (C1), Phusco_32 (C1), Pier_34 (C1), Pio_35 (C1), Pivoine_32 (C1), Pleione_34 (C1), Portcullis_81 (DC1), Primadonna_27 (C1), PullumCavea_79 (DC1), PurduePete_31 (C1), QBert_30 (C1), Quasimodo_32 (C1), Rahel_32 (C1), Rizal_30 (C1), Rizwana_7 (AP1), RoMag_27 (C1), Rocha_30 (C1), RogerDodger_84 (DC1), Ronan_27 (C1), Roots515_32 (C1), SVoro_31 (C1), Salacia_34 (C1), Salvador_80 (DC1), Sauce_33 (C1), ScottMcG_32 (C1), Sebata_32 (C1), Shaqnato_28 (C1), ShiaLabeouf_32 (C1), Shifa_29 (C1), Shinji_80 (DC1), Shnickers_32 (C1), Shrimp_32 (C1), SilentRX_7 (AP4), SilverDipper_33 (C1), SmallFry_32 (C1), SmokingBunny_81 (DC1), Spec_30 (C1), Specks_37 (C1), SpeedDemon_540 (DL), Sprinklers_32 (C1), Spud_34 (C1), Squiddly_103 (DN2), SrishMeg2525_31 (C1), StephanieG_32 (C1), StubbySaigey_31 (C1), Substance289_29 (C1), Tainan_37 (C1), Teardrop_31 (C1), TinyTim_32 (C1), Togo_80 (DC1), Tonenili_36 (C1), Tortoise16_31 (C1), Trinitium_31 (C1), Turret_30 (C1), Twister6_81 (DC1), Tyke_34 (C1), Valary_81 (DC1), ValleyTerrace_32 (C1), Vortex_38 (C1), Wally_31 (C1), Willis_32 (C1), Wizard_77 (DC1), Yassified_29 (C1), YemiJoy2021_33 (C1), YoungMoneyMata_32 (C1), Yucca_32 (C1), YungMoney_79 (DC1), Zalkecks_34 (C1), Zeenon_34 (C1), ZygoTaiga_32 (C1),

Start 90:

- Found in 10 of 454 (2.2%) of genes in pham
- Manual Annotations of this start: 5 of 377
- Called 100.0% of time when present
- Phage (with cluster) where this start called: ArtetaBall_2 (DJ), Blanky_1 (DJ), CWormy_2 (DJ), Crocheter_2 (DJ), Dialga_2 (DJ), GMA2_84 (DS), Hortihabitatio_2 (DJ), Mossy_1 (DJ), Perkunas_2 (DJ), Untouchable_2 (DJ),

Start 91:

- Found in 5 of 454 (1.1%) of genes in pham

- Manual Annotations of this start: 3 of 377
- Called 100.0% of time when present
- Phage (with cluster) where this start called: A3Wally_215 (GD1), Dodo_215 (GD1), Erasmago_204 (GD2), PauloDiaboli_215 (GD1), Pumpernickel_196 (GD4),

Start 92:

- Found in 1 of 454 (0.2%) of genes in pham
- Manual Annotations of this start: 1 of 377
- Called 100.0% of time when present
- Phage (with cluster) where this start called: G4_46 (BW),

Start 94:

- Found in 26 of 454 (5.7%) of genes in pham
- Manual Annotations of this start: 21 of 377
- Called 88.5% of time when present
- Phage (with cluster) where this start called: Anglerfish_11 (A1), Arcanine_11 (A1), Atkinbua_11 (A1), BeesKnees_11 (A1), Cardigan_143 (DD), DreamCatcher_12 (A1), Dynamix_11 (A1), Fenn_11 (A1), JonJames_139 (DD), KSSJEB_10 (A1), Manatee_11 (A1), McGuire_11 (A1), Naira_11 (A1), Nina_52 (CT), PinkPlastic_9 (A1), Rajelicia_10 (A1), RedBaron_55 (CT), Slagathor_11 (A1), Squee_11 (A1), Sunfish_12 (singleton), Switzer_11 (A1), U2_10 (A1), Yvonnetastic_136 (DD),

Start 96:

- Found in 4 of 454 (0.9%) of genes in pham
- Manual Annotations of this start: 2 of 377
- Called 50.0% of time when present
- Phage (with cluster) where this start called: ParvusTarda_93 (DV), Wojtek_85 (DV),

Start 98:

- Found in 1 of 454 (0.2%) of genes in pham
- Manual Annotations of this start: 1 of 377
- Called 100.0% of time when present
- Phage (with cluster) where this start called: JeanGrey_20 (singleton),

Start 99:

- Found in 17 of 454 (3.7%) of genes in pham
- No Manual Annotations of this start.
- Called 5.9% of time when present
- Phage (with cluster) where this start called: BigAnti_4 (singleton),

Start 107:

- Found in 3 of 454 (0.7%) of genes in pham
- Manual Annotations of this start: 1 of 377
- Called 33.3% of time when present
- Phage (with cluster) where this start called: Tortellini_63 (P2),

Start 108:

- Found in 13 of 454 (2.9%) of genes in pham
- Manual Annotations of this start: 5 of 377
- Called 38.5% of time when present
- Phage (with cluster) where this start called: Kudrefre_118 (DU1), Octobien14_114 (DU1), RobinRose_58 (EG), Sephiroth_114 (DU1), Syleon_119 (DU1),

Start 109:

- Found in 1 of 454 (0.2%) of genes in pham
- Manual Annotations of this start: 1 of 377
- Called 100.0% of time when present
- Phage (with cluster) where this start called: Sandalphon_96 (F1),

Start 111:

- Found in 22 of 454 (4.8%) of genes in pham
- Manual Annotations of this start: 15 of 377
- Called 81.8% of time when present
- Phage (with cluster) where this start called: Anon_48 (A15), CandC_55 (EG), Causa_146 (AI), Constance_64 (FA), DatBoi_51 (DL), Kelcole_54 (EG), KillerQueen_57 (EG), Lambo_93 (DV), Marcie_61 (EG), Nikan_9 (AP2), Ollypop_11 (AP2), OneinaGillian_56 (EG), Peas_65 (FA), Pepe25_55 (EG), Ren19_8 (AP2), StAugustine_144 (AI), Stellammi_137 (UNK), Tempo_56 (EG),

Start 112:

- Found in 4 of 454 (0.9%) of genes in pham
- Manual Annotations of this start: 3 of 377
- Called 100.0% of time when present
- Phage (with cluster) where this start called: Greely_244 (C2), Myrna_235 (C2), Phabba_246 (C2), ScoobyDoobyDoo_233 (C2),

Start 113:

- Found in 1 of 454 (0.2%) of genes in pham
- Manual Annotations of this start: 1 of 377
- Called 100.0% of time when present
- Phage (with cluster) where this start called: Cantare_94 (singleton),

Start 114:

- Found in 4 of 454 (0.9%) of genes in pham
- Manual Annotations of this start: 4 of 377
- Called 100.0% of time when present
- Phage (with cluster) where this start called: Argie_6 (W), Briton15_12 (A1), GodPhather_6 (W), Ichabod_11 (A1),

Start 115:

- Found in 39 of 454 (8.6%) of genes in pham
- Manual Annotations of this start: 38 of 377
- Called 100.0% of time when present
- Phage (with cluster) where this start called: BearBQ_64 (DN), Blexus_93 (F1), BobaPhett_98 (F1), Brocalys_88 (F1), Burwell21_90 (F1), ByChance_87 (F1), Cabrinians_93 (F1), Clifton_88 (F1), Crumble_91 (F1), FreddyB_106 (F1), Gorge_95 (F1), James_100 (F1), Jarcob_99 (F1), Jennelsea_93 (F1), Koella_89 (F1), LastJedi_87 (F1), Latretium_99 (F1), LilMoolah_99 (F1), Lizziana_97 (F1), Maravista_93 (F1), Martik_95 (F1), Mattes_97 (F1), Minnie_91 (F1), MortyNRick_62 (DN), Nivrat_96 (F1), NormanBulbieJr_94 (F1), OlympiaSaint_100 (F1), Philus_98 (F1), Pippy_94 (F1), Priscilla_97 (F1), Saal_94 (F1), ShiLan_99 (F1), ShowerHandel_97 (F1), Spoonbill_96 (F1), SwagPigglett_98 (F1), Vivum_96 (F1), Whouxphf_100 (F1), Yorick_92 (F1), Zizzle_99 (F1),

Start 117:

- Found in 1 of 454 (0.2%) of genes in pham

- Manual Annotations of this start: 1 of 377
- Called 100.0% of time when present
- Phage (with cluster) where this start called: Shocker_3 (singleton),

Start 118:

- Found in 14 of 454 (3.1%) of genes in pham
- Manual Annotations of this start: 6 of 377
- Called 92.9% of time when present
- Phage (with cluster) where this start called: BarbieDoll_72 (AU6), Barbonzobean_74 (AU6), Biscute_68 (AU6), Elver_133 (FK), Gandionco_129 (FK), JeNeSaisPas_127 (FK), Kinny_71 (AU6), Kureo_130 (FK), Lewando_71 (AU6), Marianna39_130 (FK), Paella_133 (FK), Qui_133 (FK), Renaldo_76 (AU6),

Start 119:

- Found in 34 of 454 (7.5%) of genes in pham
- No Manual Annotations of this start.
- Called 2.9% of time when present
- Phage (with cluster) where this start called: Romm_58 (EG),

Start 120:

- Found in 9 of 454 (2.0%) of genes in pham
- Manual Annotations of this start: 7 of 377
- Called 88.9% of time when present
- Phage (with cluster) where this start called: Annadreamy_67 (BK1), Beuffert_67 (BK1), Blueeyedbeauty_69 (BK1), Faust_71 (BK1), Limpid_66 (BK1), SeresaTree_71 (BK1), Sham_67 (BK1), TunaTartare_69 (BK1),

Start 121:

- Found in 5 of 454 (1.1%) of genes in pham
- Manual Annotations of this start: 3 of 377
- Called 60.0% of time when present
- Phage (with cluster) where this start called: Bobby_171 (J), Fransoyer_60 (EG), SadLad_63 (EG),

Start 123:

- Found in 26 of 454 (5.7%) of genes in pham
- Manual Annotations of this start: 21 of 377
- Called 88.5% of time when present
- Phage (with cluster) where this start called: Arcadia_72 (AM), BenitoAntonio_71 (AM), Benllo_70 (AM), Bowling_74 (AM), Cheesy_73 (AM), Circum_74 (AM), Correa_71 (AM), Dynamite_72 (AM), Elsa_72 (AM), GoCrazy_69 (AM), Hankly_72 (AM), Heisenberger_71 (AM), JEGGS_71 (AM), Kardesai_72 (AM), KeaneyLin_68 (AM), Mooshroom_73 (AM), Mudcat_68 (AM), NapoleonB_73 (AM), Nason_72 (AM), Stardom_72 (AM), Tribby_76 (AM), Xenomorph_69 (AM), YoshiYama_74 (AM),

Start 127:

- Found in 15 of 454 (3.3%) of genes in pham
- Manual Annotations of this start: 1 of 377
- Called 6.7% of time when present
- Phage (with cluster) where this start called: DrLupo_104 (H2),

Start 131:

- Found in 213 of 454 (46.9%) of genes in pham

- Manual Annotations of this start: 3 of 377
- Called 3.8% of time when present
- Phage (with cluster) where this start called: ERHickory_13 (singleton), Elver_124 (FK), Gandionco_121 (FK), JeNeSaisPas_119 (FK), Kureo_122 (FK), Marianna39_122 (FK), Paella_124 (FK), Qui_124 (FK),

Start 133:

- Found in 12 of 454 (2.6%) of genes in pham
- No Manual Annotations of this start.
- Called 8.3% of time when present
- Phage (with cluster) where this start called: Muglass_70 (AU6),

Summary by clusters:

There are 47 clusters represented in this pham: DN, GD1, singleton, DJ, AP2, AP3, DD, AP1, DL, AP4, FA, BW, DV, GD4, DT, FK, DS, FN, A15, A1, CZ2, AU6, C2, C1, CT, P2, AD, AI, EG, J, AM, N, AP, GC, BK1, W, DU1, UNK, DC2, CV, DC1, F1, CR5, H2, DN2, FC, GD2,

Info for manual annotations of cluster A1:

- Start number 88 was manually annotated 1 time for cluster A1.
- Start number 94 was manually annotated 17 times for cluster A1.
- Start number 114 was manually annotated 2 times for cluster A1.

Info for manual annotations of cluster A15:

- Start number 111 was manually annotated 1 time for cluster A15.

Info for manual annotations of cluster AD:

- Start number 68 was manually annotated 2 times for cluster AD.

Info for manual annotations of cluster AI:

- Start number 111 was manually annotated 2 times for cluster AI.

Info for manual annotations of cluster AM:

- Start number 123 was manually annotated 21 times for cluster AM.

Info for manual annotations of cluster AP:

- Start number 84 was manually annotated 1 time for cluster AP.

Info for manual annotations of cluster AP1:

- Start number 89 was manually annotated 1 time for cluster AP1.

Info for manual annotations of cluster AP2:

- Start number 84 was manually annotated 10 times for cluster AP2.
- Start number 111 was manually annotated 1 time for cluster AP2.

Info for manual annotations of cluster AP3:

- Start number 89 was manually annotated 1 time for cluster AP3.

Info for manual annotations of cluster AP4:

- Start number 89 was manually annotated 2 times for cluster AP4.

Info for manual annotations of cluster AU6:

- Start number 118 was manually annotated 3 times for cluster AU6.

Info for manual annotations of cluster BK1:

- Start number 120 was manually annotated 7 times for cluster BK1.

Info for manual annotations of cluster BW:

- Start number 92 was manually annotated 1 time for cluster BW.

Info for manual annotations of cluster C1:

- Start number 89 was manually annotated 170 times for cluster C1.

Info for manual annotations of cluster C2:

- Start number 112 was manually annotated 3 times for cluster C2.

Info for manual annotations of cluster CT:

- Start number 94 was manually annotated 1 time for cluster CT.

Info for manual annotations of cluster CV:

- Start number 86 was manually annotated 1 time for cluster CV.

Info for manual annotations of cluster CZ2:

- Start number 83 was manually annotated 3 times for cluster CZ2.

Info for manual annotations of cluster DC1:

- Start number 89 was manually annotated 25 times for cluster DC1.

Info for manual annotations of cluster DC2:

- Start number 89 was manually annotated 1 time for cluster DC2.

Info for manual annotations of cluster DD:

- Start number 94 was manually annotated 2 times for cluster DD.

Info for manual annotations of cluster DJ:

- Start number 90 was manually annotated 5 times for cluster DJ.

Info for manual annotations of cluster DL:

- Start number 89 was manually annotated 2 times for cluster DL.
- Start number 111 was manually annotated 1 time for cluster DL.

Info for manual annotations of cluster DN:

- Start number 115 was manually annotated 2 times for cluster DN.

Info for manual annotations of cluster DN2:

- Start number 89 was manually annotated 1 time for cluster DN2.

Info for manual annotations of cluster DU1:

- Start number 108 was manually annotated 4 times for cluster DU1.

Info for manual annotations of cluster DV:

- Start number 96 was manually annotated 2 times for cluster DV.

- Start number 111 was manually annotated 1 time for cluster DV.

Info for manual annotations of cluster EG:

- Start number 108 was manually annotated 1 time for cluster EG.
- Start number 111 was manually annotated 7 times for cluster EG.
- Start number 121 was manually annotated 2 times for cluster EG.

Info for manual annotations of cluster F1:

- Start number 109 was manually annotated 1 time for cluster F1.
- Start number 115 was manually annotated 36 times for cluster F1.

Info for manual annotations of cluster FA:

- Start number 111 was manually annotated 2 times for cluster FA.

Info for manual annotations of cluster FC:

- Start number 87 was manually annotated 1 time for cluster FC.

Info for manual annotations of cluster FK:

- Start number 118 was manually annotated 3 times for cluster FK.
- Start number 131 was manually annotated 3 times for cluster FK.

Info for manual annotations of cluster GC:

- Start number 85 was manually annotated 2 times for cluster GC.

Info for manual annotations of cluster GD1:

- Start number 91 was manually annotated 2 times for cluster GD1.

Info for manual annotations of cluster GD4:

- Start number 91 was manually annotated 1 time for cluster GD4.

Info for manual annotations of cluster H2:

- Start number 127 was manually annotated 1 time for cluster H2.

Info for manual annotations of cluster J:

- Start number 121 was manually annotated 1 time for cluster J.

Info for manual annotations of cluster N:

- Start number 47 was manually annotated 5 times for cluster N.
- Start number 66 was manually annotated 5 times for cluster N.

Info for manual annotations of cluster P2:

- Start number 107 was manually annotated 1 time for cluster P2.

Info for manual annotations of cluster W:

- Start number 114 was manually annotated 2 times for cluster W.

Gene Information:

Gene: A3Wally_215 Start: 115440, Stop: 115123, Start Num: 91
Candidate Starts for A3Wally_215:
(Start: 91 @115440 has 3 MA's), (157, 115323), (185, 115284), (210, 115188), (220, 115128),

Gene: AWGoat_6 Start: 2566, Stop: 2979, Start Num: 89
Candidate Starts for AWGoat_6:
(Start: 89 @2566 has 203 MA's), (124, 2656), (175, 2773), (206, 2869),

Gene: Ablatia_31 Start: 10089, Stop: 10439, Start Num: 89
Candidate Starts for Ablatia_31:
(Start: 89 @10089 has 203 MA's), (104, 10137), (Start: 131 @10185 has 3 MA's), (149, 10230), (151, 10236), (171, 10272), (180, 10296), (211, 10407),

Gene: Ading_32 Start: 10352, Stop: 10702, Start Num: 89
Candidate Starts for Ading_32:
(Start: 89 @10352 has 203 MA's), (104, 10400), (Start: 131 @10448 has 3 MA's), (149, 10493), (151, 10499), (171, 10535), (180, 10559), (211, 10670),

Gene: Adlitam_32 Start: 10369, Stop: 10719, Start Num: 89
Candidate Starts for Adlitam_32:
(Start: 89 @10369 has 203 MA's), (104, 10417), (Start: 131 @10465 has 3 MA's), (149, 10510), (151, 10516), (171, 10552), (180, 10576), (211, 10687),

Gene: Amataga_32 Start: 10373, Stop: 10723, Start Num: 89
Candidate Starts for Amataga_32:
(Start: 89 @10373 has 203 MA's), (104, 10421), (Start: 131 @10469 has 3 MA's), (149, 10514), (151, 10520), (171, 10556), (180, 10580), (211, 10691),

Gene: Anglerfish_11 Start: 6625, Stop: 6939, Start Num: 94
Candidate Starts for Anglerfish_11:
(Start: 94 @6625 has 21 MA's), (119, 6664), (128, 6673), (158, 6742), (190, 6817), (207, 6877),

Gene: Annadreamy_67 Start: 53881, Stop: 54282, Start Num: 120
Candidate Starts for Annadreamy_67:
(Start: 120 @53881 has 7 MA's), (151, 53947), (172, 53992), (178, 54019), (179, 54025), (192, 54061), (200, 54088), (202, 54094), (209, 54130), (214, 54181), (217, 54187),

Gene: Anon_48 Start: 31013, Stop: 30756, Start Num: 111
Candidate Starts for Anon_48:
(Start: 111 @31013 has 15 MA's), (190, 30884), (198, 30860),

Gene: Arcadia_72 Start: 44474, Stop: 44782, Start Num: 123
Candidate Starts for Arcadia_72:
(Start: 123 @44474 has 21 MA's), (163, 44576), (177, 44612), (196, 44675), (206, 44705),

Gene: Arcanine_11 Start: 6591, Stop: 6905, Start Num: 94
Candidate Starts for Arcanine_11:
(Start: 94 @6591 has 21 MA's), (119, 6630), (128, 6639), (158, 6708), (190, 6783), (207, 6843),

Gene: ArcherS7_31 Start: 10363, Stop: 10713, Start Num: 89
Candidate Starts for ArcherS7_31:
(Start: 89 @10363 has 203 MA's), (104, 10411), (Start: 131 @10459 has 3 MA's), (149, 10504), (151, 10510), (171, 10546), (180, 10570), (211, 10681),

Gene: Argie_6 Start: 3283, Stop: 3579, Start Num: 114
Candidate Starts for Argie_6:
(Start: 114 @3283 has 4 MA's), (157, 3376), (165, 3391), (198, 3481), (205, 3505), (207, 3517),

Gene: Arri_80 Start: 52921, Stop: 53367, Start Num: 89
Candidate Starts for Arri_80:
(22, 52615), (24, 52633), (37, 52726), (Start: 89 @52921 has 203 MA's), (104, 52969), (132, 53017),
(198, 53173), (205, 53197),

Gene: ArtetaBall_2 Start: 479, Stop: 808, Start Num: 90
Candidate Starts for ArtetaBall_2:
(Start: 90 @479 has 5 MA's), (129, 545), (189, 686), (198, 713), (202, 725),

Gene: Asterius_33 Start: 10638, Stop: 10988, Start Num: 89
Candidate Starts for Asterius_33:
(Start: 89 @10638 has 203 MA's), (104, 10686), (Start: 131 @10734 has 3 MA's), (149, 10779), (151, 10785), (171, 10821), (180, 10845), (211, 10956),

Gene: Astraea_33 Start: 10543, Stop: 10893, Start Num: 89
Candidate Starts for Astraea_33:
(Start: 89 @10543 has 203 MA's), (104, 10591), (Start: 131 @10639 has 3 MA's), (149, 10684), (151, 10690), (171, 10726), (180, 10750), (211, 10861),

Gene: Atkinbua_11 Start: 6636, Stop: 6950, Start Num: 94
Candidate Starts for Atkinbua_11:
(Start: 94 @6636 has 21 MA's), (119, 6675), (158, 6753), (179, 6798),

Gene: Atlantean_32 Start: 10373, Stop: 10723, Start Num: 89
Candidate Starts for Atlantean_32:
(Start: 89 @10373 has 203 MA's), (104, 10421), (Start: 131 @10469 has 3 MA's), (149, 10514), (151, 10520), (171, 10556), (180, 10580), (211, 10691),

Gene: Attis_55 Start: 39035, Stop: 39415, Start Num: 83
Candidate Starts for Attis_55:
(Start: 83 @39035 has 3 MA's), (102, 39089), (161, 39218), (179, 39254), (189, 39281), (190, 39284),
(200, 39314), (205, 39332), (207, 39344), (213, 39401),

Gene: Audrick_34 Start: 10352, Stop: 10702, Start Num: 89
Candidate Starts for Audrick_34:
(Start: 89 @10352 has 203 MA's), (104, 10400), (Start: 131 @10448 has 3 MA's), (149, 10493), (151, 10499), (171, 10535), (180, 10559), (211, 10670),

Gene: Ava3_33 Start: 10918, Stop: 11268, Start Num: 89
Candidate Starts for Ava3_33:
(Start: 89 @10918 has 203 MA's), (104, 10966), (Start: 131 @11014 has 3 MA's), (149, 11059), (151, 11065), (171, 11101), (180, 11125), (211, 11236),

Gene: Babyland_31 Start: 9811, Stop: 10161, Start Num: 89
Candidate Starts for Babyland_31:
(Start: 89 @9811 has 203 MA's), (104, 9859), (Start: 131 @9907 has 3 MA's), (149, 9952), (151, 9958),
(171, 9994), (180, 10018), (211, 10129),

Gene: BackyardAgain_29 Start: 9792, Stop: 10142, Start Num: 89
Candidate Starts for BackyardAgain_29:
(Start: 89 @9792 has 203 MA's), (104, 9840), (Start: 131 @9888 has 3 MA's), (149, 9933), (151, 9939),
(171, 9975), (180, 9999), (211, 10110),

Gene: BadAgartude_33 Start: 11005, Stop: 11355, Start Num: 89
Candidate Starts for BadAgartude_33:
(Start: 89 @11005 has 203 MA's), (104, 11053), (Start: 131 @11101 has 3 MA's), (149, 11146), (151,
11152), (171, 11188), (180, 11212), (211, 11323),

Gene: Bakery_85 Start: 55359, Stop: 55733, Start Num: 89
Candidate Starts for Bakery_85:
(Start: 89 @55359 has 203 MA's), (197, 55536), (198, 55539),

Gene: BananaFence_33 Start: 10802, Stop: 11152, Start Num: 89
Candidate Starts for BananaFence_33:
(Start: 89 @10802 has 203 MA's), (104, 10850), (Start: 131 @10898 has 3 MA's), (149, 10943), (151,
10949), (171, 10985), (180, 11009), (211, 11120),

Gene: Bangla1971_31 Start: 10369, Stop: 10719, Start Num: 89
Candidate Starts for Bangla1971_31:
(Start: 89 @10369 has 203 MA's), (104, 10417), (Start: 131 @10465 has 3 MA's), (149, 10510), (151,
10516), (171, 10552), (180, 10576), (211, 10687),

Gene: Bantam_53 Start: 43734, Stop: 44000, Start Num: 89
Candidate Starts for Bantam_53:
(Start: 89 @43734 has 203 MA's), (104, 43782), (106, 43785), (187, 43878), (198, 43902),

Gene: Barb_83 Start: 53513, Stop: 53983, Start Num: 89
Candidate Starts for Barb_83:
(30, 53279), (35, 53306), (36, 53309), (Start: 89 @53513 has 203 MA's), (104, 53561), (147, 53645),
(198, 53789),

Gene: BarbieDoll_72 Start: 44655, Stop: 44960, Start Num: 118
Candidate Starts for BarbieDoll_72:
(Start: 118 @44655 has 6 MA's), (133, 44685), (150, 44727), (194, 44853), (211, 44931),

Gene: Barbonzobean_74 Start: 44903, Stop: 45208, Start Num: 118
Candidate Starts for Barbonzobean_74:
(Start: 118 @44903 has 6 MA's), (150, 44975), (173, 45023),

Gene: Basquiat_31 Start: 9792, Stop: 10142, Start Num: 89
Candidate Starts for Basquiat_31:
(Start: 89 @9792 has 203 MA's), (104, 9840), (Start: 131 @9888 has 3 MA's), (149, 9933), (151, 9939),
(171, 9975), (180, 9999), (211, 10110),

Gene: Beagle_10 Start: 3455, Stop: 3862, Start Num: 84
Candidate Starts for Beagle_10:
(Start: 84 @3455 has 11 MA's), (99, 3506), (104, 3515), (144, 3602), (164, 3650), (188, 3716), (195,
3734), (200, 3752),

Gene: BeanWater_28 Start: 10762, Stop: 11112, Start Num: 89
Candidate Starts for BeanWater_28:

(Start: 89 @10762 has 203 MA's), (104, 10810), (Start: 131 @10858 has 3 MA's), (149, 10903), (151, 10909), (171, 10945), (180, 10969), (211, 11080),

Gene: BearBQ_64 Start: 41458, Stop: 41745, Start Num: 115

Candidate Starts for BearBQ_64:

(39, 41194), (51, 41230), (52, 41236), (74, 41332), (Start: 107 @41446 has 1 MA's), (Start: 115 @41458 has 38 MA's), (137, 41503), (174, 41575), (202, 41653), (207, 41677), (213, 41734),

Gene: BeesKnees_11 Start: 6720, Stop: 7034, Start Num: 94

Candidate Starts for BeesKnees_11:

(Start: 94 @6720 has 21 MA's), (119, 6759), (158, 6837), (179, 6882),

Gene: Belieber_28 Start: 9559, Stop: 9909, Start Num: 89

Candidate Starts for Belieber_28:

(Start: 89 @9559 has 203 MA's), (104, 9607), (Start: 131 @9655 has 3 MA's), (149, 9700), (151, 9706), (171, 9742), (180, 9766), (211, 9877),

Gene: BellaJr_84 Start: 48464, Stop: 48778, Start Num: 89

Candidate Starts for BellaJr_84:

(Start: 89 @48464 has 203 MA's), (104, 48512), (211, 48746),

Gene: BenitoAntonio_71 Start: 44114, Stop: 44425, Start Num: 123

Candidate Starts for BenitoAntonio_71:

(Start: 123 @44114 has 21 MA's), (149, 44177), (177, 44255), (183, 44276), (191, 44300), (196, 44318), (206, 44348),

Gene: Benllo_70 Start: 44792, Stop: 45103, Start Num: 123

Candidate Starts for Benllo_70:

(Start: 123 @44792 has 21 MA's), (149, 44855), (177, 44933), (183, 44954), (191, 44978), (196, 44996), (206, 45026),

Gene: BetaFish_8 Start: 3461, Stop: 3868, Start Num: 84

Candidate Starts for BetaFish_8:

(Start: 84 @3461 has 11 MA's), (99, 3512), (104, 3521), (144, 3608), (164, 3656), (188, 3722), (195, 3740), (200, 3758),

Gene: Beuffert_67 Start: 55006, Stop: 55407, Start Num: 120

Candidate Starts for Beuffert_67:

(Start: 120 @55006 has 7 MA's), (168, 55111), (172, 55117), (178, 55144), (209, 55255), (213, 55300), (217, 55312),

Gene: Bezza_24 Start: 9438, Stop: 9788, Start Num: 89

Candidate Starts for Bezza_24:

(Start: 89 @9438 has 203 MA's), (104, 9486), (Start: 131 @9534 has 3 MA's), (149, 9579), (151, 9585), (171, 9621), (180, 9645), (211, 9756),

Gene: BigAnti_4 Start: 2585, Stop: 2959, Start Num: 99

Candidate Starts for BigAnti_4:

(Start: 89 @2546 has 203 MA's), (99, 2585), (101, 2588), (106, 2597), (Start: 120 @2618 has 7 MA's), (135, 2648), (143, 2669), (174, 2729), (190, 2777), (198, 2801),

Gene: BigCity_36 Start: 11898, Stop: 12248, Start Num: 89

Candidate Starts for BigCity_36:

(Start: 89 @11898 has 203 MA's), (104, 11946), (Start: 131 @11994 has 3 MA's), (149, 12039), (151, 12045), (171, 12081), (180, 12105), (211, 12216),

Gene: Bigswole_38 Start: 12708, Stop: 13058, Start Num: 89

Candidate Starts for Bigswole_38:

(Start: 89 @12708 has 203 MA's), (104, 12756), (Start: 131 @12804 has 3 MA's), (149, 12849), (151, 12855), (171, 12891), (180, 12915), (211, 13026),

Gene: Bipolarisk_31 Start: 10629, Stop: 10979, Start Num: 89

Candidate Starts for Bipolarisk_31:

(Start: 89 @10629 has 203 MA's), (104, 10677), (Start: 131 @10725 has 3 MA's), (149, 10770), (151, 10776), (171, 10812), (180, 10836), (211, 10947),

Gene: Biscute_68 Start: 44307, Stop: 44612, Start Num: 118

Candidate Starts for Biscute_68:

(Start: 118 @44307 has 6 MA's), (133, 44337), (150, 44379), (194, 44505), (211, 44583),

Gene: Blackbrain_30 Start: 9608, Stop: 9958, Start Num: 89

Candidate Starts for Blackbrain_30:

(Start: 89 @9608 has 203 MA's), (104, 9656), (Start: 131 @9704 has 3 MA's), (149, 9749), (151, 9755), (171, 9791), (180, 9815), (211, 9926),

Gene: Blackdragon_27 Start: 9394, Stop: 9744, Start Num: 89

Candidate Starts for Blackdragon_27:

(Start: 89 @9394 has 203 MA's), (104, 9442), (Start: 131 @9490 has 3 MA's), (149, 9535), (151, 9541), (171, 9577), (180, 9601), (211, 9712),

Gene: Blanky_1 Start: 220, Stop: 549, Start Num: 90

Candidate Starts for Blanky_1:

(Start: 90 @220 has 5 MA's), (119, 268), (155, 352), (189, 427), (190, 430), (198, 454), (202, 466),

Gene: Blexus_93 Start: 53556, Stop: 53837, Start Num: 115

Candidate Starts for Blexus_93:

(18, 53145), (20, 53166), (23, 53187), (25, 53217), (Start: 115 @53556 has 38 MA's), (137, 53601), (144, 53619), (198, 53736),

Gene: Blubba_26 Start: 9089, Stop: 9439, Start Num: 89

Candidate Starts for Blubba_26:

(Start: 89 @9089 has 203 MA's), (104, 9137), (Start: 131 @9185 has 3 MA's), (149, 9230), (151, 9236), (180, 9296), (211, 9407),

Gene: Blueeyedbeauty_69 Start: 54393, Stop: 54800, Start Num: 120

Candidate Starts for Blueeyedbeauty_69:

(Start: 120 @54393 has 7 MA's), (138, 54429), (170, 54507), (179, 54543), (193, 54582), (207, 54633), (211, 54666), (215, 54699), (217, 54705),

Gene: BobaPhatt_29 Start: 9803, Stop: 10153, Start Num: 89

Candidate Starts for BobaPhatt_29:

(Start: 89 @9803 has 203 MA's), (104, 9851), (Start: 131 @9899 has 3 MA's), (149, 9944), (151, 9950), (171, 9986), (180, 10010), (211, 10121),

Gene: BobaPhett_98 Start: 55238, Stop: 55519, Start Num: 115

Candidate Starts for BobaPhett_98:

(18, 54827), (20, 54848), (23, 54869), (25, 54899), (Start: 115 @55238 has 38 MA's), (137, 55283), (144, 55301), (198, 55418), (207, 55454),

Gene: Bobby_171 Start: 94727, Stop: 95017, Start Num: 121

Candidate Starts for Bobby_171:

(Start: 121 @94727 has 3 MA's), (Start: 131 @94751 has 3 MA's), (140, 94766), (198, 94919), (200, 94925),

Gene: Bonray_32 Start: 10906, Stop: 11256, Start Num: 89

Candidate Starts for Bonray_32:

(Start: 89 @10906 has 203 MA's), (104, 10954), (Start: 131 @11002 has 3 MA's), (149, 11047), (151, 11053), (171, 11089), (180, 11113), (211, 11224),

Gene: Bowling_74 Start: 45068, Stop: 45379, Start Num: 123

Candidate Starts for Bowling_74:

(Start: 123 @45068 has 21 MA's), (149, 45131), (177, 45209), (183, 45230), (191, 45254), (196, 45272), (206, 45302),

Gene: Bowman_31 Start: 10918, Stop: 11268, Start Num: 89

Candidate Starts for Bowman_31:

(Start: 89 @10918 has 203 MA's), (104, 10966), (Start: 131 @11014 has 3 MA's), (149, 11059), (151, 11065), (171, 11101), (180, 11125), (211, 11236),

Gene: Bread_33 Start: 10918, Stop: 11268, Start Num: 89

Candidate Starts for Bread_33:

(Start: 89 @10918 has 203 MA's), (104, 10966), (Start: 131 @11014 has 3 MA's), (149, 11059), (151, 11065), (171, 11101), (180, 11125), (211, 11236),

Gene: Breeniome_32 Start: 9801, Stop: 10151, Start Num: 89

Candidate Starts for Breeniome_32:

(Start: 89 @9801 has 203 MA's), (104, 9849), (Start: 131 @9897 has 3 MA's), (149, 9942), (151, 9948), (171, 9984), (180, 10008), (211, 10119),

Gene: Briton15_12 Start: 6774, Stop: 7046, Start Num: 114

Candidate Starts for Briton15_12:

(Start: 114 @6774 has 4 MA's), (137, 6813), (144, 6831), (184, 6909), (198, 6948),

Gene: Brocalys_88 Start: 50717, Stop: 50998, Start Num: 115

Candidate Starts for Brocalys_88:

(18, 50306), (20, 50327), (23, 50348), (25, 50378), (Start: 115 @50717 has 38 MA's), (137, 50762), (144, 50780), (198, 50897),

Gene: BruhMoment_8 Start: 3480, Stop: 3902, Start Num: 89

Candidate Starts for BruhMoment_8:

(38, 3276), (42, 3288), (61, 3375), (Start: 89 @3480 has 203 MA's), (99, 3522), (129, 3579), (151, 3636), (167, 3669), (189, 3735), (190, 3738), (200, 3768),

Gene: Burrough_32 Start: 10629, Stop: 10979, Start Num: 89

Candidate Starts for Burrough_32:

(Start: 89 @10629 has 203 MA's), (104, 10677), (Start: 131 @10725 has 3 MA's), (149, 10770), (151, 10776), (171, 10812), (180, 10836), (211, 10947),

Gene: Burwell21_90 Start: 53003, Stop: 53284, Start Num: 115

Candidate Starts for Burwell21_90:

(18, 52592), (20, 52613), (23, 52634), (25, 52664), (Start: 115 @53003 has 38 MA's), (137, 53048), (144, 53066), (198, 53183),

Gene: Bxz1_32 Start: 11378, Stop: 11728, Start Num: 89

Candidate Starts for Bxz1_32:

(Start: 89 @11378 has 203 MA's), (104, 11426), (Start: 131 @11474 has 3 MA's), (149, 11519), (151, 11525), (171, 11561), (180, 11585), (211, 11696),

Gene: ByChance_87 Start: 49075, Stop: 49356, Start Num: 115

Candidate Starts for ByChance_87:

(18, 48664), (20, 48685), (23, 48706), (25, 48736), (Start: 115 @49075 has 38 MA's), (137, 49120), (144, 49138), (198, 49255),

Gene: CWormy_2 Start: 479, Stop: 808, Start Num: 90

Candidate Starts for CWormy_2:

(Start: 90 @479 has 5 MA's), (129, 545), (189, 686), (198, 713), (202, 725),

Gene: Cabrinians_93 Start: 52638, Stop: 52919, Start Num: 115

Candidate Starts for Cabrinians_93:

(18, 52227), (20, 52248), (23, 52269), (25, 52299), (Start: 115 @52638 has 38 MA's), (137, 52683), (144, 52701), (198, 52818),

Gene: Cactojaque_29 Start: 9497, Stop: 9847, Start Num: 89

Candidate Starts for Cactojaque_29:

(Start: 89 @9497 has 203 MA's), (104, 9545), (Start: 131 @9593 has 3 MA's), (149, 9638), (151, 9644), (171, 9680), (180, 9704), (211, 9815),

Gene: Cali_32 Start: 11939, Stop: 12289, Start Num: 89

Candidate Starts for Cali_32:

(Start: 89 @11939 has 203 MA's), (104, 11987), (Start: 131 @12035 has 3 MA's), (149, 12080), (151, 12086), (171, 12122), (180, 12146), (211, 12257),

Gene: CandC_55 Start: 37729, Stop: 37433, Start Num: 111

Candidate Starts for CandC_55:

(21, 38122), (27, 38068), (40, 37984), (95, 37759), (Start: 108 @37732 has 5 MA's), (Start: 111 @37729 has 15 MA's), (119, 37717), (130, 37693), (137, 37678), (157, 37630), (165, 37621), (182, 37585), (198, 37543), (204, 37522),

Gene: Cantare_94 Start: 71064, Stop: 71369, Start Num: 113

Candidate Starts for Cantare_94:

(Start: 113 @71064 has 1 MA's), (198, 71268), (211, 71337),

Gene: Capablanca_34 Start: 11498, Stop: 11848, Start Num: 89

Candidate Starts for Capablanca_34:

(Start: 89 @11498 has 203 MA's), (104, 11546), (Start: 131 @11594 has 3 MA's), (149, 11639), (151, 11645), (171, 11681), (180, 11705), (211, 11816),

Gene: Caravan_30 Start: 10188, Stop: 10538, Start Num: 89

Candidate Starts for Caravan_30:

(Start: 89 @10188 has 203 MA's), (104, 10236), (Start: 131 @10284 has 3 MA's), (149, 10329), (151, 10335), (171, 10371), (180, 10395), (211, 10506),

Gene: Carcharodon_55 Start: 36177, Stop: 36665, Start Num: 47

Candidate Starts for Carcharodon_55:

(Start: 47 @36177 has 5 MA's), (56, 36213), (Start: 66 @36267 has 5 MA's), (125, 36420), (Start: 127 @36423 has 1 MA's), (143, 36450), (198, 36561), (200, 36567), (213, 36654),

Gene: Cardigan_143 Start: 79014, Stop: 79379, Start Num: 94

Candidate Starts for Cardigan_143:

(Start: 94 @79014 has 21 MA's), (110, 79044), (119, 79059), (122, 79065), (133, 79089), (157, 79149), (197, 79257), (198, 79260), (216, 79365),

Gene: Catera_30 Start: 9796, Stop: 10146, Start Num: 89

Candidate Starts for Catera_30:

(Start: 89 @9796 has 203 MA's), (104, 9844), (Start: 131 @9892 has 3 MA's), (149, 9937), (151, 9943), (171, 9979), (180, 10003), (211, 10114),

Gene: Causa_146 Start: 84210, Stop: 83881, Start Num: 111

Candidate Starts for Causa_146:

(Start: 111 @84210 has 15 MA's), (140, 84153), (189, 84015), (197, 83991), (208, 83943),

Gene: Chargie21_31 Start: 9792, Stop: 10142, Start Num: 89

Candidate Starts for Chargie21_31:

(Start: 89 @9792 has 203 MA's), (104, 9840), (Start: 131 @9888 has 3 MA's), (149, 9933), (151, 9939), (171, 9975), (180, 9999), (211, 10110),

Gene: CharlieB_32 Start: 9937, Stop: 10287, Start Num: 89

Candidate Starts for CharlieB_32:

(Start: 89 @9937 has 203 MA's), (104, 9985), (Start: 131 @10033 has 3 MA's), (149, 10078), (151, 10084), (171, 10120), (180, 10144), (211, 10255),

Gene: ChaylaJr_31 Start: 9879, Stop: 10229, Start Num: 89

Candidate Starts for ChaylaJr_31:

(Start: 89 @9879 has 203 MA's), (104, 9927), (Start: 131 @9975 has 3 MA's), (149, 10020), (151, 10026), (171, 10062), (180, 10086), (211, 10197),

Gene: Cheesy_73 Start: 44267, Stop: 44575, Start Num: 123

Candidate Starts for Cheesy_73:

(Start: 123 @44267 has 21 MA's), (163, 44369), (177, 44405), (196, 44468), (206, 44498),

Gene: CherryCola_80 Start: 53607, Stop: 53978, Start Num: 89

Candidate Starts for CherryCola_80:

(41, 53424), (Start: 89 @53607 has 203 MA's), (198, 53784), (205, 53808),

Gene: ChickenPhender_31 Start: 9837, Stop: 10187, Start Num: 89

Candidate Starts for ChickenPhender_31:

(Start: 89 @9837 has 203 MA's), (104, 9885), (Start: 131 @9933 has 3 MA's), (149, 9978), (151, 9984), (171, 10020), (180, 10044), (211, 10155),

Gene: Chilliams_63 Start: 29204, Stop: 29557, Start Num: 87

Candidate Starts for Chilliams_63:

(Start: 87 @29204 has 1 MA's),

Gene: Chomp_32 Start: 10373, Stop: 10723, Start Num: 89

Candidate Starts for Chomp_32:

(Start: 89 @10373 has 203 MA's), (104, 10421), (Start: 131 @10469 has 3 MA's), (149, 10514), (151, 10520), (171, 10556), (180, 10580), (211, 10691),

Gene: CindyLou_32 Start: 10373, Stop: 10723, Start Num: 89

Candidate Starts for CindyLou_32:

(Start: 89 @10373 has 203 MA's), (104, 10421), (Start: 131 @10469 has 3 MA's), (149, 10514), (151, 10520), (171, 10556), (180, 10580), (211, 10691),

Gene: Circum_74 Start: 44882, Stop: 45193, Start Num: 123

Candidate Starts for Circum_74:

(Start: 123 @44882 has 21 MA's), (149, 44945), (177, 45023), (183, 45044), (191, 45068), (196, 45086), (206, 45116),

Gene: ClamChowder_83 Start: 53513, Stop: 53983, Start Num: 89

Candidate Starts for ClamChowder_83:

(30, 53279), (35, 53306), (36, 53309), (Start: 89 @53513 has 203 MA's), (104, 53561), (147, 53645), (198, 53789),

Gene: Cleatunium_28 Start: 10068, Stop: 10418, Start Num: 89

Candidate Starts for Cleatunium_28:

(Start: 89 @10068 has 203 MA's), (104, 10116), (Start: 131 @10164 has 3 MA's), (149, 10209), (151, 10215), (180, 10275), (211, 10386),

Gene: Clifton_88 Start: 51692, Stop: 51973, Start Num: 115

Candidate Starts for Clifton_88:

(18, 51281), (20, 51302), (23, 51323), (25, 51353), (Start: 115 @51692 has 38 MA's), (137, 51737), (144, 51755), (198, 51872),

Gene: Clown_82 Start: 53661, Stop: 54005, Start Num: 89

Candidate Starts for Clown_82:

(Start: 89 @53661 has 203 MA's), (104, 53709), (152, 53778), (192, 53832), (195, 53841), (220, 53973), (221, 53982),

Gene: Concombres_31 Start: 11144, Stop: 11494, Start Num: 89

Candidate Starts for Concombres_31:

(Start: 89 @11144 has 203 MA's), (104, 11192), (Start: 131 @11240 has 3 MA's), (149, 11285), (151, 11291), (171, 11327), (180, 11351), (211, 11462),

Gene: Constance_64 Start: 41355, Stop: 41633, Start Num: 111

Candidate Starts for Constance_64:

(1, 39963), (2, 39996), (3, 40005), (4, 40026), (5, 40035), (6, 40104), (7, 40203), (8, 40368), (9, 40506), (10, 40698), (11, 40722), (15, 40857), (19, 40944), (49, 41130), (58, 41163), (76, 41259), (Start: 111 @41355 has 15 MA's), (197, 41529), (198, 41532), (207, 41568), (212, 41622),

Gene: Correa_71 Start: 43841, Stop: 44149, Start Num: 123

Candidate Starts for Correa_71:

(Start: 123 @43841 has 21 MA's), (163, 43943), (177, 43979), (196, 44042), (206, 44072),

Gene: CoveyB_81 Start: 53099, Stop: 53470, Start Num: 89

Candidate Starts for CoveyB_81:

(41, 52916), (Start: 89 @53099 has 203 MA's), (198, 53276), (205, 53300),

Gene: Crocheter_2 Start: 479, Stop: 808, Start Num: 90

Candidate Starts for Crocheter_2:

(Start: 90 @479 has 5 MA's), (129, 545), (189, 686), (198, 713), (202, 725),

Gene: Crumble_91 Start: 49362, Stop: 49643, Start Num: 115

Candidate Starts for Crumble_91:

(18, 48951), (20, 48972), (23, 48993), (25, 49023), (Start: 115 @49362 has 38 MA's), (137, 49407), (144, 49425), (198, 49542),

Gene: DTDevon_33 Start: 11537, Stop: 11887, Start Num: 89

Candidate Starts for DTDevon_33:

(Start: 89 @11537 has 203 MA's), (104, 11585), (Start: 131 @11633 has 3 MA's), (149, 11678), (151, 11684), (171, 11720), (180, 11744), (211, 11855),

Gene: Daffodil_34 Start: 10918, Stop: 11268, Start Num: 89

Candidate Starts for Daffodil_34:

(Start: 89 @10918 has 203 MA's), (104, 10966), (Start: 131 @11014 has 3 MA's), (149, 11059), (151, 11065), (171, 11101), (180, 11125), (211, 11236),

Gene: Dandelion_36 Start: 12233, Stop: 12583, Start Num: 89

Candidate Starts for Dandelion_36:

(Start: 89 @12233 has 203 MA's), (104, 12281), (Start: 131 @12329 has 3 MA's), (149, 12374), (151, 12380), (171, 12416), (180, 12440), (211, 12551),

Gene: Danyall_81 Start: 52793, Stop: 53164, Start Num: 89

Candidate Starts for Danyall_81:

(41, 52610), (Start: 89 @52793 has 203 MA's), (198, 52970), (205, 52994),

Gene: Darko_31 Start: 10771, Stop: 11121, Start Num: 89

Candidate Starts for Darko_31:

(Start: 89 @10771 has 203 MA's), (104, 10819), (Start: 131 @10867 has 3 MA's), (149, 10912), (151, 10918), (171, 10954), (180, 10978), (211, 11089),

Gene: DatBoi_51 Start: 43635, Stop: 43889, Start Num: 111

Candidate Starts for DatBoi_51:

(Start: 111 @43635 has 15 MA's), (Start: 131 @43674 has 3 MA's), (198, 43791),

Gene: Delilah_32 Start: 10918, Stop: 11268, Start Num: 89

Candidate Starts for Delilah_32:

(Start: 89 @10918 has 203 MA's), (104, 10966), (Start: 131 @11014 has 3 MA's), (149, 11059), (151, 11065), (171, 11101), (180, 11125), (211, 11236),

Gene: Demodog_30 Start: 11144, Stop: 11494, Start Num: 89

Candidate Starts for Demodog_30:

(Start: 89 @11144 has 203 MA's), (104, 11192), (Start: 131 @11240 has 3 MA's), (149, 11285), (151, 11291), (171, 11327), (180, 11351), (211, 11462),

Gene: Derek_33 Start: 10330, Stop: 10680, Start Num: 89

Candidate Starts for Derek_33:

(Start: 89 @10330 has 203 MA's), (104, 10378), (Start: 131 @10426 has 3 MA's), (149, 10471), (151, 10477), (171, 10513), (180, 10537), (211, 10648),

Gene: Dessert_30 Start: 10373, Stop: 10723, Start Num: 89

Candidate Starts for Dessert_30:

(Start: 89 @10373 has 203 MA's), (104, 10421), (Start: 131 @10469 has 3 MA's), (149, 10514), (151, 10520), (171, 10556), (180, 10580), (211, 10691),

Gene: Dewdrop_50 Start: 22009, Stop: 22341, Start Num: 85

Candidate Starts for Dewdrop_50:

(Start: 85 @22009 has 2 MA's), (99, 22054), (104, 22063), (Start: 123 @22093 has 21 MA's), (133, 22114), (136, 22123), (156, 22168), (211, 22306),

Gene: Dialga_2 Start: 479, Stop: 808, Start Num: 90

Candidate Starts for Dialga_2:

(Start: 90 @479 has 5 MA's), (129, 545), (189, 686), (198, 713), (202, 725),

Gene: Dietrick_27 Start: 9565, Stop: 9915, Start Num: 89

Candidate Starts for Dietrick_27:

(Start: 89 @9565 has 203 MA's), (104, 9613), (Start: 131 @9661 has 3 MA's), (149, 9706), (151, 9712), (180, 9772), (211, 9883),

Gene: DirtMonster_31 Start: 11456, Stop: 11806, Start Num: 89

Candidate Starts for DirtMonster_31:

(Start: 89 @11456 has 203 MA's), (104, 11504), (Start: 131 @11552 has 3 MA's), (149, 11597), (151, 11603), (180, 11663), (211, 11774),

Gene: Dodo_215 Start: 115242, Stop: 114925, Start Num: 91

Candidate Starts for Dodo_215:

(Start: 91 @115242 has 3 MA's), (148, 115140), (157, 115125), (185, 115086), (198, 115047), (210, 114990), (220, 114930),

Gene: DogYard_8 Start: 3331, Stop: 3738, Start Num: 84

Candidate Starts for DogYard_8:

(Start: 84 @3331 has 11 MA's), (99, 3382), (104, 3391), (144, 3478), (164, 3526), (188, 3592), (195, 3610), (200, 3628),

Gene: Domi_27 Start: 10190, Stop: 10540, Start Num: 89

Candidate Starts for Domi_27:

(Start: 89 @10190 has 203 MA's), (104, 10238), (Start: 131 @10286 has 3 MA's), (149, 10331), (151, 10337), (180, 10397), (211, 10508),

Gene: Dori_58 Start: 47703, Stop: 48095, Start Num: 68

Candidate Starts for Dori_58:

(60, 47673), (Start: 68 @47703 has 2 MA's), (81, 47751), (125, 47850), (Start: 127 @47853 has 1 MA's), (143, 47880), (198, 47991), (200, 47997),

Gene: DrLupo_104 Start: 65399, Stop: 65650, Start Num: 127

Candidate Starts for DrLupo_104:

(69, 65246), (75, 65267), (104, 65360), (Start: 127 @65399 has 1 MA's), (198, 65552), (200, 65558),

Gene: DrPhinkDaddy_32 Start: 10915, Stop: 11265, Start Num: 89

Candidate Starts for DrPhinkDaddy_32:

(Start: 89 @10915 has 203 MA's), (104, 10963), (Start: 131 @11011 has 3 MA's), (149, 11056), (151, 11062), (171, 11098), (180, 11122), (211, 11233),

Gene: Drazdys_32 Start: 10703, Stop: 11053, Start Num: 89

Candidate Starts for Drazdys_32:

(Start: 89 @10703 has 203 MA's), (104, 10751), (Start: 131 @10799 has 3 MA's), (149, 10844), (151, 10850), (171, 10886), (180, 10910), (211, 11021),

Gene: DreamCatcher_12 Start: 7365, Stop: 7679, Start Num: 94

Candidate Starts for DreamCatcher_12:

(Start: 94 @7365 has 21 MA's), (119, 7404), (128, 7413), (158, 7482), (190, 7557), (207, 7617),

Gene: Duckfeet_29 Start: 10109, Stop: 10459, Start Num: 89

Candidate Starts for Duckfeet_29:

(Start: 89 @10109 has 203 MA's), (104, 10157), (Start: 131 @10205 has 3 MA's), (149, 10250), (151, 10256), (171, 10292), (180, 10316), (211, 10427),

Gene: Dynamite_72 Start: 44325, Stop: 44636, Start Num: 123

Candidate Starts for Dynamite_72:

(Start: 123 @44325 has 21 MA's), (149, 44388), (177, 44466), (183, 44487), (191, 44511), (196, 44529), (206, 44559),

Gene: Dynamix_11 Start: 6722, Stop: 7036, Start Num: 94

Candidate Starts for Dynamix_11:

(Start: 94 @6722 has 21 MA's), (119, 6761), (128, 6770), (158, 6839), (190, 6914), (207, 6974),

Gene: EGUnicorn_51 Start: 35104, Stop: 35502, Start Num: 66

Candidate Starts for EGUnicorn_51:

(Start: 47 @35014 has 5 MA's), (56, 35050), (Start: 66 @35104 has 5 MA's), (125, 35257), (Start: 127 @35260 has 1 MA's), (143, 35287), (198, 35398), (200, 35404), (213, 35491),

Gene: ERHickory_13 Start: 5618, Stop: 5839, Start Num: 131

Candidate Starts for ERHickory_13:

(Start: 121 @5594 has 3 MA's), (Start: 131 @5618 has 3 MA's), (198, 5738),

Gene: ET08_27 Start: 10374, Stop: 10724, Start Num: 89

Candidate Starts for ET08_27:

(Start: 89 @10374 has 203 MA's), (104, 10422), (Start: 131 @10470 has 3 MA's), (149, 10515), (151, 10521), (171, 10557), (180, 10581), (211, 10692),

Gene: EasyJones_31 Start: 9542, Stop: 9892, Start Num: 89

Candidate Starts for EasyJones_31:

(Start: 89 @9542 has 203 MA's), (104, 9590), (Start: 131 @9638 has 3 MA's), (149, 9683), (151, 9689), (171, 9725), (180, 9749), (211, 9860),

Gene: EggyFarm_36 Start: 11898, Stop: 12248, Start Num: 89

Candidate Starts for EggyFarm_36:

(Start: 89 @11898 has 203 MA's), (104, 11946), (Start: 131 @11994 has 3 MA's), (149, 12039), (151, 12045), (171, 12081), (180, 12105), (211, 12216),

Gene: Egi03_79 Start: 52659, Stop: 53000, Start Num: 89

Candidate Starts for Egi03_79:

(Start: 89 @52659 has 203 MA's), (197, 52803), (198, 52806),

Gene: Elsa_72 Start: 44474, Stop: 44782, Start Num: 123

Candidate Starts for Elsa_72:

(Start: 123 @44474 has 21 MA's), (163, 44576), (177, 44612), (196, 44675), (206, 44705),

Gene: Elver_133 Start: 70843, Stop: 71208, Start Num: 118
Candidate Starts for Elver_133:
(Start: 88 @70765 has 1 MA's), (Start: 118 @70843 has 6 MA's), (164, 70954), (189, 71029), (205, 71080),

Gene: Elver_124 Start: 67517, Stop: 67825, Start Num: 131
Candidate Starts for Elver_124:
(Start: 131 @67517 has 3 MA's), (149, 67562), (166, 67601), (200, 67697),

Gene: EmToTheThree_35 Start: 12332, Stop: 12682, Start Num: 89
Candidate Starts for EmToTheThree_35:
(Start: 89 @12332 has 203 MA's), (104, 12380), (Start: 131 @12428 has 3 MA's), (149, 12473), (151, 12479), (171, 12515), (180, 12539), (211, 12650),

Gene: EmmaElysia_30 Start: 9557, Stop: 9907, Start Num: 89
Candidate Starts for EmmaElysia_30:
(Start: 89 @9557 has 203 MA's), (104, 9605), (Start: 131 @9653 has 3 MA's), (149, 9698), (151, 9704), (171, 9740), (180, 9764), (211, 9875),

Gene: Erasmago_204 Start: 109961, Stop: 109605, Start Num: 91
Candidate Starts for Erasmago_204:
(Start: 89 @109982 has 203 MA's), (Start: 91 @109961 has 3 MA's), (Start: 96 @109949 has 2 MA's), (223, 109631), (225, 109616),

Gene: Erdmann_33 Start: 10918, Stop: 11268, Start Num: 89
Candidate Starts for Erdmann_33:
(Start: 89 @10918 has 203 MA's), (104, 10966), (Start: 131 @11014 has 3 MA's), (149, 11059), (151, 11065), (171, 11101), (180, 11125), (211, 11236),

Gene: ErnieJ_33 Start: 10738, Stop: 11088, Start Num: 89
Candidate Starts for ErnieJ_33:
(Start: 89 @10738 has 203 MA's), (104, 10786), (Start: 131 @10834 has 3 MA's), (149, 10879), (151, 10885), (171, 10921), (180, 10945), (211, 11056),

Gene: Essence_31 Start: 10092, Stop: 10442, Start Num: 89
Candidate Starts for Essence_31:
(Start: 89 @10092 has 203 MA's), (104, 10140), (Start: 131 @10188 has 3 MA's), (149, 10233), (151, 10239), (171, 10275), (180, 10299), (211, 10410),

Gene: Evamon_80 Start: 53024, Stop: 53377, Start Num: 89
Candidate Starts for Evamon_80:
(Start: 89 @53024 has 203 MA's), (207, 53219),

Gene: Ewok_32 Start: 10921, Stop: 11271, Start Num: 89
Candidate Starts for Ewok_32:
(Start: 89 @10921 has 203 MA's), (104, 10969), (Start: 131 @11017 has 3 MA's), (149, 11062), (151, 11068), (171, 11104), (180, 11128), (211, 11239),

Gene: Faust_71 Start: 56000, Stop: 56389, Start Num: 120
Candidate Starts for Faust_71:
(Start: 120 @56000 has 7 MA's), (160, 56087), (162, 56096), (189, 56168), (192, 56174), (224, 56351), (226, 56360),

Gene: Fenn_11 Start: 6952, Stop: 7266, Start Num: 94
Candidate Starts for Fenn_11:
(Start: 94 @6952 has 21 MA's), (119, 6991), (158, 7069), (179, 7114),

Gene: Fixie_29 Start: 9540, Stop: 9890, Start Num: 89
Candidate Starts for Fixie_29:
(Start: 89 @9540 has 203 MA's), (104, 9588), (Start: 131 @9636 has 3 MA's), (149, 9681), (151, 9687),
(171, 9723), (180, 9747), (211, 9858),

Gene: Fludd_31 Start: 9793, Stop: 10143, Start Num: 89
Candidate Starts for Fludd_31:
(Start: 89 @9793 has 203 MA's), (104, 9841), (Start: 131 @9889 has 3 MA's), (149, 9934), (151, 9940),
(171, 9976), (180, 10000), (211, 10111),

Gene: Fongie_32 Start: 11453, Stop: 11803, Start Num: 89
Candidate Starts for Fongie_32:
(Start: 89 @11453 has 203 MA's), (104, 11501), (Start: 131 @11549 has 3 MA's), (149, 11594), (151,
11600), (171, 11636), (180, 11660), (211, 11771),

Gene: Forrestell_8 Start: 3035, Stop: 3442, Start Num: 84
Candidate Starts for Forrestell_8:
(Start: 84 @3035 has 11 MA's), (99, 3086), (104, 3095), (144, 3182), (164, 3230), (188, 3296), (195,
3314), (200, 3332),

Gene: FoxtrotP1_32 Start: 11246, Stop: 11596, Start Num: 89
Candidate Starts for FoxtrotP1_32:
(Start: 89 @11246 has 203 MA's), (104, 11294), (Start: 131 @11342 has 3 MA's), (149, 11387), (151,
11393), (171, 11429), (180, 11453), (211, 11564),

Gene: Fransoyer_60 Start: 45317, Stop: 45054, Start Num: 121
Candidate Starts for Fransoyer_60:
(Start: 121 @45317 has 3 MA's), (133, 45290), (142, 45269), (198, 45158), (207, 45122), (213, 45065),

Gene: FrayBell_38 Start: 12486, Stop: 12836, Start Num: 89
Candidate Starts for FrayBell_38:
(Start: 89 @12486 has 203 MA's), (104, 12534), (Start: 131 @12582 has 3 MA's), (149, 12627), (151,
12633), (180, 12693), (211, 12804),

Gene: FreddyB_106 Start: 54284, Stop: 54565, Start Num: 115
Candidate Starts for FreddyB_106:
(18, 53873), (20, 53894), (23, 53915), (25, 53945), (Start: 115 @54284 has 38 MA's), (137, 54329),
(144, 54347), (198, 54464),

Gene: FudgeTart_33 Start: 10918, Stop: 11268, Start Num: 89
Candidate Starts for FudgeTart_33:
(Start: 89 @10918 has 203 MA's), (104, 10966), (Start: 131 @11014 has 3 MA's), (149, 11059), (151,
11065), (171, 11101), (180, 11125), (211, 11236),

Gene: Fugax_84 Start: 53505, Stop: 53975, Start Num: 89
Candidate Starts for Fugax_84:
(30, 53271), (35, 53298), (36, 53301), (Start: 89 @53505 has 203 MA's), (104, 53553), (147, 53637),
(198, 53781),

Gene: G4_46 Start: 30222, Stop: 30545, Start Num: 92

Candidate Starts for G4_46:

(80, 30180), (Start: 92 @30222 has 1 MA's), (Start: 94 @30228 has 21 MA's), (Start: 123 @30276 has 21 MA's), (141, 30312), (179, 30378), (190, 30408), (198, 30432),

Gene: GMA2_84 Start: 80351, Stop: 80010, Start Num: 90

Candidate Starts for GMA2_84:

(Start: 90 @80351 has 5 MA's), (Start: 94 @80342 has 21 MA's), (189, 80141), (190, 80138), (213, 80021),

Gene: GMA4_42 Start: 31658, Stop: 32065, Start Num: 66

Candidate Starts for GMA4_42:

(45, 31565), (Start: 66 @31658 has 5 MA's), (81, 31715), (125, 31823), (143, 31853), (155, 31877), (168, 31901), (188, 31934), (211, 32033),

Gene: Gabriel_32 Start: 9792, Stop: 10142, Start Num: 89

Candidate Starts for Gabriel_32:

(Start: 89 @9792 has 203 MA's), (104, 9840), (Start: 131 @9888 has 3 MA's), (149, 9933), (151, 9939), (171, 9975), (180, 9999), (211, 10110),

Gene: Gamgam_32 Start: 10373, Stop: 10723, Start Num: 89

Candidate Starts for Gamgam_32:

(Start: 89 @10373 has 203 MA's), (104, 10421), (Start: 131 @10469 has 3 MA's), (149, 10514), (151, 10520), (171, 10556), (180, 10580), (211, 10691),

Gene: Gandionco_121 Start: 66329, Stop: 66637, Start Num: 131

Candidate Starts for Gandionco_121:

(Start: 131 @66329 has 3 MA's), (149, 66374), (166, 66413), (200, 66509),

Gene: Gandionco_129 Start: 69661, Stop: 70026, Start Num: 118

Candidate Starts for Gandionco_129:

(Start: 88 @69583 has 1 MA's), (Start: 118 @69661 has 6 MA's), (164, 69772), (189, 69847), (205, 69898),

Gene: Gex_56 Start: 36283, Stop: 36681, Start Num: 66

Candidate Starts for Gex_56:

(Start: 47 @36193 has 5 MA's), (56, 36229), (Start: 66 @36283 has 5 MA's), (125, 36436), (Start: 127 @36439 has 1 MA's), (143, 36466), (198, 36577), (200, 36583), (213, 36670),

Gene: Gezellig_77 Start: 52852, Stop: 53223, Start Num: 89

Candidate Starts for Gezellig_77:

(41, 52669), (Start: 89 @52852 has 203 MA's), (198, 53029), (205, 53053),

Gene: Ghost_32 Start: 10373, Stop: 10723, Start Num: 89

Candidate Starts for Ghost_32:

(Start: 89 @10373 has 203 MA's), (104, 10421), (Start: 131 @10469 has 3 MA's), (149, 10514), (151, 10520), (171, 10556), (180, 10580), (211, 10691),

Gene: Gizmo_34 Start: 10920, Stop: 11270, Start Num: 89

Candidate Starts for Gizmo_34:

(Start: 89 @10920 has 203 MA's), (104, 10968), (Start: 131 @11016 has 3 MA's), (149, 11061), (151, 11067), (171, 11103), (180, 11127), (211, 11238),

Gene: GlutenPhree_33 Start: 10373, Stop: 10723, Start Num: 89

Candidate Starts for GlutenPhree_33:

(Start: 89 @10373 has 203 MA's), (104, 10421), (Start: 131 @10469 has 3 MA's), (149, 10514), (151, 10520), (171, 10556), (180, 10580), (211, 10691),

Gene: GoCrazy_69 Start: 43769, Stop: 44080, Start Num: 123

Candidate Starts for GoCrazy_69:

(Start: 123 @43769 has 21 MA's), (149, 43832), (177, 43910), (183, 43931), (191, 43955), (196, 43973), (206, 44003),

Gene: GodPhather_6 Start: 3283, Stop: 3579, Start Num: 114

Candidate Starts for GodPhather_6:

(Start: 114 @3283 has 4 MA's), (157, 3376), (165, 3391), (198, 3481), (205, 3505), (207, 3517),

Gene: Gorge_95 Start: 53911, Stop: 54192, Start Num: 115

Candidate Starts for Gorge_95:

(18, 53500), (20, 53521), (23, 53542), (25, 53572), (Start: 115 @53911 has 38 MA's), (137, 53956), (144, 53974), (198, 54091),

Gene: Grasshills_36 Start: 11898, Stop: 12248, Start Num: 89

Candidate Starts for Grasshills_36:

(Start: 89 @11898 has 203 MA's), (104, 11946), (Start: 131 @11994 has 3 MA's), (149, 12039), (151, 12045), (171, 12081), (180, 12105), (211, 12216),

Gene: Greely_244 Start: 137695, Stop: 138051, Start Num: 112

Candidate Starts for Greely_244:

(28, 137374), (50, 137473), (59, 137515), (Start: 112 @137695 has 3 MA's), (137, 137746), (168, 137821), (171, 137824), (181, 137854), (184, 137863), (198, 137905), (200, 137911), (203, 137920), (205, 137929),

Gene: Grungle_25 Start: 8489, Stop: 8839, Start Num: 89

Candidate Starts for Grungle_25:

(Start: 89 @8489 has 203 MA's), (104, 8537), (Start: 131 @8585 has 3 MA's), (149, 8630), (151, 8636), (171, 8672), (180, 8696), (211, 8807),

Gene: Guwapp_32 Start: 10330, Stop: 10680, Start Num: 89

Candidate Starts for Guwapp_32:

(Start: 89 @10330 has 203 MA's), (104, 10378), (Start: 131 @10426 has 3 MA's), (149, 10471), (151, 10477), (171, 10513), (180, 10537), (211, 10648),

Gene: Halldule_28 Start: 9159, Stop: 9509, Start Num: 89

Candidate Starts for Halldule_28:

(Start: 89 @9159 has 203 MA's), (104, 9207), (Start: 131 @9255 has 3 MA's), (149, 9300), (151, 9306), (171, 9342), (180, 9366), (211, 9477),

Gene: Halo3_78 Start: 53437, Stop: 53808, Start Num: 89

Candidate Starts for Halo3_78:

(41, 53254), (Start: 89 @53437 has 203 MA's), (198, 53614), (205, 53638),

Gene: Hankly_72 Start: 43963, Stop: 44274, Start Num: 123

Candidate Starts for Hankly_72:

(Start: 123 @43963 has 21 MA's), (149, 44026), (177, 44104), (183, 44125), (191, 44149), (196, 44167), (206, 44197),

Gene: Heisenberger_71 Start: 43731, Stop: 44042, Start Num: 123
Candidate Starts for Heisenberger_71:
(Start: 123 @43731 has 21 MA's), (149, 43794), (177, 43872), (183, 43893), (191, 43917), (196, 43935), (206, 43965),

Gene: HomeFry_79 Start: 53143, Stop: 52757, Start Num: 73
Candidate Starts for HomeFry_79:
(14, 53527), (73, 53143), (116, 53014), (125, 52996), (143, 52966),

Gene: Hortihabitatio_2 Start: 447, Stop: 776, Start Num: 90
Candidate Starts for Hortihabitatio_2:
(65, 342), (82, 414), (Start: 90 @447 has 5 MA's), (129, 513), (189, 654), (197, 678), (198, 681), (202, 693),

Gene: HyRo_31 Start: 11105, Stop: 11455, Start Num: 89
Candidate Starts for HyRo_31:
(Start: 89 @11105 has 203 MA's), (104, 11153), (Start: 131 @11201 has 3 MA's), (149, 11246), (151, 11252), (171, 11288), (180, 11312), (211, 11423),

Gene: I3_34 Start: 11467, Stop: 11817, Start Num: 89
Candidate Starts for I3_34:
(Start: 89 @11467 has 203 MA's), (104, 11515), (Start: 131 @11563 has 3 MA's), (149, 11608), (151, 11614), (180, 11674), (211, 11785),

Gene: Ichabod_11 Start: 6739, Stop: 7011, Start Num: 114
Candidate Starts for Ichabod_11:
(Start: 114 @6739 has 4 MA's), (137, 6778), (144, 6796), (184, 6874), (198, 6913),

Gene: IkeLoa_28 Start: 10216, Stop: 10566, Start Num: 89
Candidate Starts for IkeLoa_28:
(Start: 89 @10216 has 203 MA's), (104, 10264), (Start: 131 @10312 has 3 MA's), (149, 10357), (151, 10363), (171, 10399), (180, 10423), (211, 10534),

Gene: InigoMontoya_33 Start: 10334, Stop: 10684, Start Num: 89
Candidate Starts for InigoMontoya_33:
(Start: 89 @10334 has 203 MA's), (104, 10382), (Start: 131 @10430 has 3 MA's), (149, 10475), (151, 10481), (171, 10517), (180, 10541), (211, 10652),

Gene: InterFolia_39 Start: 13024, Stop: 13374, Start Num: 89
Candidate Starts for InterFolia_39:
(Start: 89 @13024 has 203 MA's), (104, 13072), (Start: 131 @13120 has 3 MA's), (149, 13165), (151, 13171), (171, 13207), (180, 13231), (211, 13342),

Gene: Iota_29 Start: 10453, Stop: 10803, Start Num: 89
Candidate Starts for Iota_29:
(Start: 89 @10453 has 203 MA's), (104, 10501), (Start: 131 @10549 has 3 MA's), (149, 10594), (151, 10600), (171, 10636), (180, 10660), (211, 10771),

Gene: Issimir_32 Start: 10913, Stop: 11263, Start Num: 89
Candidate Starts for Issimir_32:
(Start: 89 @10913 has 203 MA's), (104, 10961), (Start: 131 @11009 has 3 MA's), (149, 11054), (151, 11060), (171, 11096), (180, 11120), (211, 11231),

Gene: Izajani_33 Start: 10918, Stop: 11268, Start Num: 89

Candidate Starts for Izajani_33:

(Start: 89 @10918 has 203 MA's), (104, 10966), (Start: 131 @11014 has 3 MA's), (149, 11059), (151, 11065), (171, 11101), (180, 11125), (211, 11236),

Gene: JEGGS_71 Start: 43810, Stop: 44121, Start Num: 123

Candidate Starts for JEGGS_71:

(Start: 123 @43810 has 21 MA's), (149, 43873), (177, 43951), (183, 43972), (191, 43996), (196, 44014), (206, 44044),

Gene: JPickles_30 Start: 9567, Stop: 9917, Start Num: 89

Candidate Starts for JPickles_30:

(Start: 89 @9567 has 203 MA's), (104, 9615), (Start: 131 @9663 has 3 MA's), (149, 9708), (151, 9714), (171, 9750), (180, 9774), (211, 9885),

Gene: James_100 Start: 55293, Stop: 55574, Start Num: 115

Candidate Starts for James_100:

(18, 54882), (20, 54903), (23, 54924), (25, 54954), (Start: 115 @55293 has 38 MA's), (137, 55338), (144, 55356), (198, 55473),

Gene: Janiyra_32 Start: 10352, Stop: 10702, Start Num: 89

Candidate Starts for Janiyra_32:

(Start: 89 @10352 has 203 MA's), (104, 10400), (Start: 131 @10448 has 3 MA's), (149, 10493), (151, 10499), (171, 10535), (180, 10559), (211, 10670),

Gene: Jarcob_99 Start: 54892, Stop: 55173, Start Num: 115

Candidate Starts for Jarcob_99:

(18, 54481), (20, 54502), (23, 54523), (25, 54553), (Start: 115 @54892 has 38 MA's), (137, 54937), (144, 54955), (198, 55072),

Gene: JayJay_35 Start: 10883, Stop: 11233, Start Num: 89

Candidate Starts for JayJay_35:

(Start: 89 @10883 has 203 MA's), (104, 10931), (Start: 131 @10979 has 3 MA's), (149, 11024), (151, 11030), (171, 11066), (180, 11090), (211, 11201),

Gene: Jaygup_32 Start: 10369, Stop: 10719, Start Num: 89

Candidate Starts for Jaygup_32:

(Start: 89 @10369 has 203 MA's), (104, 10417), (Start: 131 @10465 has 3 MA's), (149, 10510), (151, 10516), (171, 10552), (180, 10576), (211, 10687),

Gene: JeNeSaisPas_127 Start: 70257, Stop: 70622, Start Num: 118

Candidate Starts for JeNeSaisPas_127:

(Start: 88 @70179 has 1 MA's), (Start: 118 @70257 has 6 MA's), (164, 70368), (189, 70443), (205, 70494),

Gene: JeNeSaisPas_119 Start: 66931, Stop: 67239, Start Num: 131

Candidate Starts for JeNeSaisPas_119:

(Start: 131 @66931 has 3 MA's), (149, 66976), (166, 67015), (200, 67111),

Gene: JeanGrey_20 Start: 10459, Stop: 10809, Start Num: 98

Candidate Starts for JeanGrey_20:

(Start: 98 @10459 has 1 MA's),

Gene: Jedediah_32 Start: 9838, Stop: 10188, Start Num: 89

Candidate Starts for Jedediah_32:

(Start: 89 @9838 has 203 MA's), (104, 9886), (Start: 131 @9934 has 3 MA's), (149, 9979), (151, 9985), (171, 10021), (180, 10045), (211, 10156),

Gene: Jemmno_32 Start: 10373, Stop: 10723, Start Num: 89

Candidate Starts for Jemmno_32:

(Start: 89 @10373 has 203 MA's), (104, 10421), (Start: 131 @10469 has 3 MA's), (149, 10514), (151, 10520), (171, 10556), (180, 10580), (211, 10691),

Gene: Jennelsea_93 Start: 52193, Stop: 52474, Start Num: 115

Candidate Starts for Jennelsea_93:

(18, 51782), (20, 51803), (23, 51824), (25, 51854), (Start: 115 @52193 has 38 MA's), (137, 52238), (144, 52256), (198, 52373), (207, 52409),

Gene: Jessibeth14_31 Start: 10638, Stop: 10988, Start Num: 89

Candidate Starts for Jessibeth14_31:

(Start: 89 @10638 has 203 MA's), (104, 10686), (Start: 131 @10734 has 3 MA's), (149, 10779), (151, 10785), (171, 10821), (180, 10845), (211, 10956),

Gene: Jezreel_31 Start: 10387, Stop: 10737, Start Num: 89

Candidate Starts for Jezreel_31:

(Start: 89 @10387 has 203 MA's), (104, 10435), (Start: 131 @10483 has 3 MA's), (149, 10528), (151, 10534), (171, 10570), (180, 10594), (211, 10705),

Gene: JigglyPuff_32 Start: 11194, Stop: 11544, Start Num: 89

Candidate Starts for JigglyPuff_32:

(Start: 89 @11194 has 203 MA's), (104, 11242), (Start: 131 @11290 has 3 MA's), (149, 11335), (151, 11341), (171, 11377), (180, 11401), (211, 11512),

Gene: JonJames_139 Start: 79256, Stop: 79624, Start Num: 94

Candidate Starts for JonJames_139:

(Start: 94 @79256 has 21 MA's), (110, 79286), (119, 79301), (122, 79307), (133, 79331), (153, 79382), (197, 79502), (198, 79505), (205, 79529), (216, 79610),

Gene: JulietS_27 Start: 8792, Stop: 9142, Start Num: 89

Candidate Starts for JulietS_27:

(Start: 89 @8792 has 203 MA's), (104, 8840), (Start: 131 @8888 has 3 MA's), (149, 8933), (151, 8939), (171, 8975), (180, 8999), (211, 9110),

Gene: JustHall_31 Start: 10818, Stop: 11168, Start Num: 89

Candidate Starts for JustHall_31:

(Start: 89 @10818 has 203 MA's), (104, 10866), (Start: 131 @10914 has 3 MA's), (149, 10959), (151, 10965), (171, 11001), (180, 11025), (211, 11136),

Gene: KSSJEB_10 Start: 6483, Stop: 6797, Start Num: 94

Candidate Starts for KSSJEB_10:

(Start: 88 @6456 has 1 MA's), (Start: 94 @6483 has 21 MA's), (119, 6522), (128, 6531), (158, 6600), (190, 6675), (207, 6735),

Gene: Kamryn_32 Start: 10691, Stop: 11041, Start Num: 89

Candidate Starts for Kamryn_32:

(Start: 89 @10691 has 203 MA's), (104, 10739), (Start: 131 @10787 has 3 MA's), (149, 10832), (151, 10838), (171, 10874), (180, 10898), (211, 11009),

Gene: Kardesai_72 Start: 44083, Stop: 44394, Start Num: 123

Candidate Starts for Kardesai_72:

(Start: 123 @44083 has 21 MA's), (149, 44146), (177, 44224), (183, 44245), (191, 44269), (196, 44287), (206, 44317),

Gene: Kboogie_32 Start: 9848, Stop: 10198, Start Num: 89

Candidate Starts for Kboogie_32:

(Start: 89 @9848 has 203 MA's), (104, 9896), (Start: 131 @9944 has 3 MA's), (149, 9989), (151, 9995), (171, 10031), (180, 10055), (211, 10166),

Gene: KeaneyLin_68 Start: 43769, Stop: 44080, Start Num: 123

Candidate Starts for KeaneyLin_68:

(Start: 123 @43769 has 21 MA's), (149, 43832), (177, 43910), (183, 43931), (191, 43955), (196, 43973), (206, 44003),

Gene: Kelcole_54 Start: 37921, Stop: 37628, Start Num: 111

Candidate Starts for Kelcole_54:

(95, 37951), (Start: 108 @37924 has 5 MA's), (Start: 111 @37921 has 15 MA's), (119, 37909), (137, 37870), (139, 37867), (151, 37834), (157, 37822), (165, 37813), (198, 37735), (204, 37714), (207, 37699),

Gene: Khaleesi_31 Start: 10665, Stop: 11015, Start Num: 89

Candidate Starts for Khaleesi_31:

(Start: 89 @10665 has 203 MA's), (104, 10713), (Start: 131 @10761 has 3 MA's), (149, 10806), (151, 10812), (171, 10848), (180, 10872), (211, 10983),

Gene: KillerQueen_57 Start: 38171, Stop: 37878, Start Num: 111

Candidate Starts for KillerQueen_57:

(95, 38201), (Start: 108 @38174 has 5 MA's), (Start: 111 @38171 has 15 MA's), (119, 38159), (137, 38120), (139, 38117), (151, 38084), (157, 38072), (165, 38063), (198, 37985), (204, 37964), (207, 37949),

Gene: KimmyK_80 Start: 53299, Stop: 53670, Start Num: 89

Candidate Starts for KimmyK_80:

(41, 53116), (Start: 89 @53299 has 203 MA's), (198, 53476), (205, 53500),

Gene: Kinny_71 Start: 45135, Stop: 45440, Start Num: 118

Candidate Starts for Kinny_71:

(Start: 118 @45135 has 6 MA's), (133, 45165), (150, 45207), (194, 45333), (211, 45411),

Gene: Koella_89 Start: 50055, Stop: 50336, Start Num: 115

Candidate Starts for Koella_89:

(18, 49644), (20, 49665), (23, 49686), (25, 49716), (Start: 115 @50055 has 38 MA's), (137, 50100), (144, 50118), (198, 50235),

Gene: Koguma_28 Start: 9135, Stop: 9485, Start Num: 89

Candidate Starts for Koguma_28:

(Start: 89 @9135 has 203 MA's), (104, 9183), (Start: 131 @9231 has 3 MA's), (149, 9276), (151, 9282), (171, 9318), (180, 9342), (211, 9453),

Gene: Kubulix_9 Start: 3460, Stop: 3867, Start Num: 84

Candidate Starts for Kubulix_9:

(Start: 84 @3460 has 11 MA's), (99, 3511), (104, 3520), (144, 3607), (164, 3655), (188, 3721), (195, 3739), (200, 3757),

Gene: Kudefre_118 Start: 64805, Stop: 65071, Start Num: 108

Candidate Starts for Kudefre_118:

(71, 64688), (Start: 108 @64805 has 5 MA's), (201, 64979), (212, 65060),

Gene: Kureo_130 Start: 69857, Stop: 70222, Start Num: 118

Candidate Starts for Kureo_130:

(Start: 88 @69779 has 1 MA's), (Start: 118 @69857 has 6 MA's), (164, 69968), (189, 70043), (205, 70094),

Gene: Kureo_122 Start: 66525, Stop: 66833, Start Num: 131

Candidate Starts for Kureo_122:

(Start: 131 @66525 has 3 MA's), (149, 66570), (166, 66609), (200, 66705),

Gene: LRRHood_29 Start: 11058, Stop: 11408, Start Num: 89

Candidate Starts for LRRHood_29:

(Start: 89 @11058 has 203 MA's), (104, 11106), (Start: 131 @11154 has 3 MA's), (149, 11199), (151, 11205), (171, 11241), (180, 11265), (211, 11376),

Gene: Labradorite_31 Start: 10369, Stop: 10719, Start Num: 89

Candidate Starts for Labradorite_31:

(Start: 89 @10369 has 203 MA's), (104, 10417), (Start: 131 @10465 has 3 MA's), (149, 10510), (151, 10516), (171, 10552), (180, 10576), (211, 10687),

Gene: Lambo_93 Start: 64770, Stop: 65072, Start Num: 111

Candidate Starts for Lambo_93:

(Start: 96 @64743 has 2 MA's), (100, 64752), (105, 64761), (Start: 111 @64770 has 15 MA's), (137, 64818), (198, 64971), (205, 64995),

Gene: LastJedi_87 Start: 51112, Stop: 51393, Start Num: 115

Candidate Starts for LastJedi_87:

(18, 50701), (20, 50722), (23, 50743), (25, 50773), (Start: 115 @51112 has 38 MA's), (137, 51157), (144, 51175), (198, 51292),

Gene: Latch_32 Start: 10373, Stop: 10723, Start Num: 89

Candidate Starts for Latch_32:

(Start: 89 @10373 has 203 MA's), (104, 10421), (Start: 131 @10469 has 3 MA's), (149, 10514), (151, 10520), (171, 10556), (180, 10580), (211, 10691),

Gene: Latretium_99 Start: 54158, Stop: 54439, Start Num: 115

Candidate Starts for Latretium_99:

(18, 53747), (20, 53768), (23, 53789), (25, 53819), (Start: 115 @54158 has 38 MA's), (137, 54203), (144, 54221), (198, 54338),

Gene: Leaf_50 Start: 22009, Stop: 22341, Start Num: 85

Candidate Starts for Leaf_50:

(Start: 85 @22009 has 2 MA's), (99, 22054), (104, 22063), (Start: 123 @22093 has 21 MA's), (133, 22114), (136, 22123), (156, 22168), (211, 22306),

Gene: Lee7_31 Start: 10915, Stop: 11265, Start Num: 89

Candidate Starts for Lee7_31:

(Start: 89 @10915 has 203 MA's), (104, 10963), (Start: 131 @11011 has 3 MA's), (149, 11056), (151, 11062), (171, 11098), (180, 11122), (211, 11233),

Gene: Lethe_31 Start: 10609, Stop: 10959, Start Num: 89

Candidate Starts for Lethe_31:

(Start: 89 @10609 has 203 MA's), (104, 10657), (Start: 131 @10705 has 3 MA's), (149, 10750), (151, 10756), (171, 10792), (180, 10816), (211, 10927),

Gene: Lewando_71 Start: 44727, Stop: 45032, Start Num: 118

Candidate Starts for Lewando_71:

(Start: 118 @44727 has 6 MA's), (150, 44799), (194, 44925), (211, 45003),

Gene: LifeSavor_33 Start: 10369, Stop: 10719, Start Num: 89

Candidate Starts for LifeSavor_33:

(Start: 89 @10369 has 203 MA's), (104, 10417), (Start: 131 @10465 has 3 MA's), (149, 10510), (151, 10516), (171, 10552), (180, 10576), (211, 10687),

Gene: LilMoolah_99 Start: 54092, Stop: 54373, Start Num: 115

Candidate Starts for LilMoolah_99:

(18, 53681), (20, 53702), (23, 53723), (25, 53753), (Start: 115 @54092 has 38 MA's), (137, 54137), (144, 54155), (198, 54272),

Gene: Limpid_66 Start: 53880, Stop: 54281, Start Num: 120

Candidate Starts for Limpid_66:

(Start: 120 @53880 has 7 MA's), (151, 53946), (172, 53991), (178, 54018), (179, 54024), (192, 54060), (200, 54087), (202, 54093), (209, 54129), (214, 54180), (217, 54186),

Gene: Littleton_32 Start: 10373, Stop: 10723, Start Num: 89

Candidate Starts for Littleton_32:

(Start: 89 @10373 has 203 MA's), (104, 10421), (Start: 131 @10469 has 3 MA's), (149, 10514), (151, 10520), (171, 10556), (180, 10580), (211, 10691),

Gene: Lizziana_97 Start: 54360, Stop: 54641, Start Num: 115

Candidate Starts for Lizziana_97:

(18, 53949), (20, 53970), (23, 53991), (25, 54021), (Start: 115 @54360 has 38 MA's), (137, 54405), (144, 54423), (198, 54540),

Gene: Loanshark_32 Start: 10918, Stop: 11268, Start Num: 89

Candidate Starts for Loanshark_32:

(Start: 89 @10918 has 203 MA's), (104, 10966), (Start: 131 @11014 has 3 MA's), (149, 11059), (151, 11065), (171, 11101), (180, 11125), (211, 11236),

Gene: LolaVince_35 Start: 12130, Stop: 12480, Start Num: 89

Candidate Starts for LolaVince_35:

(Start: 89 @12130 has 203 MA's), (104, 12178), (Start: 131 @12226 has 3 MA's), (149, 12271), (151, 12277), (171, 12313), (180, 12337), (211, 12448),

Gene: LookingGlass_35 Start: 11689, Stop: 12039, Start Num: 89

Candidate Starts for LookingGlass_35:

(Start: 89 @11689 has 203 MA's), (104, 11737), (Start: 131 @11785 has 3 MA's), (149, 11830), (151, 11836), (171, 11872), (180, 11896), (211, 12007),

Gene: LordFarquaad_57 Start: 39016, Stop: 39396, Start Num: 83

Candidate Starts for LordFarquaad_57:

(Start: 83 @39016 has 3 MA's), (102, 39070), (161, 39199), (179, 39235), (189, 39262), (190, 39265), (200, 39295), (205, 39313), (207, 39325), (213, 39382),

Gene: LordLeafolot_38 Start: 12485, Stop: 12835, Start Num: 89

Candidate Starts for LordLeafolot_38:

(Start: 89 @12485 has 203 MA's), (104, 12533), (Start: 131 @12581 has 3 MA's), (149, 12626), (151, 12632), (180, 12692), (211, 12803),

Gene: Lukilu_25 Start: 9509, Stop: 9859, Start Num: 89

Candidate Starts for Lukilu_25:

(Start: 89 @9509 has 203 MA's), (104, 9557), (Start: 131 @9605 has 3 MA's), (149, 9650), (151, 9656), (171, 9692), (180, 9716), (211, 9827),

Gene: Lunareta_31 Start: 10649, Stop: 10999, Start Num: 89

Candidate Starts for Lunareta_31:

(Start: 89 @10649 has 203 MA's), (104, 10697), (Start: 131 @10745 has 3 MA's), (149, 10790), (151, 10796), (171, 10832), (180, 10856), (211, 10967),

Gene: Maby2021_33 Start: 10918, Stop: 11268, Start Num: 89

Candidate Starts for Maby2021_33:

(Start: 89 @10918 has 203 MA's), (104, 10966), (Start: 131 @11014 has 3 MA's), (149, 11059), (151, 11065), (171, 11101), (180, 11125), (211, 11236),

Gene: Magsby_55 Start: 36284, Stop: 36682, Start Num: 66

Candidate Starts for Magsby_55:

(Start: 47 @36194 has 5 MA's), (56, 36230), (Start: 66 @36284 has 5 MA's), (125, 36437), (Start: 127 @36440 has 1 MA's), (143, 36467), (198, 36578), (200, 36584), (213, 36671),

Gene: Manatee_11 Start: 6673, Stop: 6987, Start Num: 94

Candidate Starts for Manatee_11:

(Start: 94 @6673 has 21 MA's), (119, 6712), (128, 6721), (158, 6790), (190, 6865), (207, 6925),

Gene: Mangeria_35 Start: 11441, Stop: 11791, Start Num: 89

Candidate Starts for Mangeria_35:

(Start: 89 @11441 has 203 MA's), (104, 11489), (Start: 131 @11537 has 3 MA's), (149, 11582), (151, 11588), (171, 11624), (180, 11648), (211, 11759),

Gene: Maravista_93 Start: 55020, Stop: 55301, Start Num: 115

Candidate Starts for Maravista_93:

(18, 54609), (20, 54630), (23, 54651), (25, 54681), (Start: 115 @55020 has 38 MA's), (137, 55065), (144, 55083), (198, 55200),

Gene: Marcie_61 Start: 38811, Stop: 38491, Start Num: 111

Candidate Starts for Marcie_61:

(95, 38841), (Start: 108 @38814 has 5 MA's), (Start: 111 @38811 has 15 MA's), (137, 38760), (157, 38712), (169, 38682), (184, 38637), (198, 38598), (204, 38577), (207, 38562),

Gene: Marianna39_130 Start: 70266, Stop: 70631, Start Num: 118

Candidate Starts for Marianna39_130:

(Start: 88 @70188 has 1 MA's), (Start: 118 @70266 has 6 MA's), (164, 70377), (189, 70452), (205, 70503),

Gene: Marianna39_122 Start: 66940, Stop: 67248, Start Num: 131

Candidate Starts for Marianna39_122:

(Start: 131 @66940 has 3 MA's), (149, 66985), (166, 67024), (200, 67120),

Gene: Martik_95 Start: 54823, Stop: 55104, Start Num: 115

Candidate Starts for Martik_95:

(18, 54412), (20, 54433), (23, 54454), (25, 54484), (Start: 115 @54823 has 38 MA's), (137, 54868), (144, 54886), (198, 55003),

Gene: Mask_58 Start: 48446, Stop: 48838, Start Num: 68

Candidate Starts for Mask_58:

(60, 48416), (Start: 68 @48446 has 2 MA's), (81, 48494), (125, 48593), (Start: 127 @48596 has 1 MA's), (143, 48623), (198, 48734), (200, 48740),

Gene: Matsumoto_31 Start: 10334, Stop: 10684, Start Num: 89

Candidate Starts for Matsumoto_31:

(Start: 89 @10334 has 203 MA's), (104, 10382), (Start: 131 @10430 has 3 MA's), (149, 10475), (151, 10481), (171, 10517), (180, 10541), (211, 10652),

Gene: Mattes_97 Start: 54029, Stop: 54310, Start Num: 115

Candidate Starts for Mattes_97:

(18, 53618), (20, 53639), (23, 53660), (25, 53690), (Start: 115 @54029 has 38 MA's), (137, 54074), (144, 54092), (198, 54209), (207, 54245),

Gene: Maturis_32 Start: 10688, Stop: 11038, Start Num: 89

Candidate Starts for Maturis_32:

(Start: 89 @10688 has 203 MA's), (104, 10736), (Start: 131 @10784 has 3 MA's), (149, 10829), (151, 10835), (171, 10871), (180, 10895), (211, 11006),

Gene: McGee_31 Start: 9557, Stop: 9907, Start Num: 89

Candidate Starts for McGee_31:

(Start: 89 @9557 has 203 MA's), (104, 9605), (Start: 131 @9653 has 3 MA's), (149, 9698), (151, 9704), (171, 9740), (180, 9764), (211, 9875),

Gene: McGuire_11 Start: 6718, Stop: 7032, Start Num: 94

Candidate Starts for McGuire_11:

(Start: 94 @6718 has 21 MA's), (119, 6757), (128, 6766), (158, 6835), (190, 6910), (207, 6970),

Gene: McWolfish_31 Start: 10665, Stop: 11015, Start Num: 89

Candidate Starts for McWolfish_31:

(Start: 89 @10665 has 203 MA's), (104, 10713), (Start: 131 @10761 has 3 MA's), (149, 10806), (151, 10812), (171, 10848), (180, 10872), (211, 10983),

Gene: Megamind_32 Start: 10903, Stop: 11253, Start Num: 89

Candidate Starts for Megamind_32:

(Start: 89 @10903 has 203 MA's), (104, 10951), (Start: 131 @10999 has 3 MA's), (149, 11044), (151, 11050), (171, 11086), (180, 11110), (211, 11221),

Gene: MellowYellow_8 Start: 3065, Stop: 3472, Start Num: 84

Candidate Starts for MellowYellow_8:

(Start: 84 @3065 has 11 MA's), (99, 3116), (104, 3125), (144, 3212), (164, 3260), (188, 3326), (195, 3344), (200, 3362),

Gene: Melpomini_31 Start: 9775, Stop: 10125, Start Num: 89

Candidate Starts for Melpomini_31:

(Start: 89 @9775 has 203 MA's), (104, 9823), (Start: 131 @9871 has 3 MA's), (149, 9916), (151, 9922), (171, 9958), (180, 9982), (211, 10093),

Gene: MikeLiesIn_32 Start: 10918, Stop: 11268, Start Num: 89

Candidate Starts for MikeLiesIn_32:

(Start: 89 @10918 has 203 MA's), (104, 10966), (Start: 131 @11014 has 3 MA's), (149, 11059), (151, 11065), (171, 11101), (180, 11125), (211, 11236),

Gene: Mikro_30 Start: 11404, Stop: 11754, Start Num: 89

Candidate Starts for Mikro_30:

(Start: 89 @11404 has 203 MA's), (104, 11452), (Start: 131 @11500 has 3 MA's), (149, 11545), (151, 11551), (171, 11587), (180, 11611), (211, 11722),

Gene: Minnie_91 Start: 54441, Stop: 54722, Start Num: 115

Candidate Starts for Minnie_91:

(18, 54030), (20, 54051), (23, 54072), (25, 54102), (Start: 115 @54441 has 38 MA's), (137, 54486), (144, 54504), (198, 54621),

Gene: MoMoMixon_33 Start: 11232, Stop: 11582, Start Num: 89

Candidate Starts for MoMoMixon_33:

(Start: 89 @11232 has 203 MA's), (104, 11280), (Start: 131 @11328 has 3 MA's), (149, 11373), (151, 11379), (171, 11415), (180, 11439), (211, 11550),

Gene: Momo_31 Start: 10373, Stop: 10723, Start Num: 89

Candidate Starts for Momo_31:

(Start: 89 @10373 has 203 MA's), (104, 10421), (Start: 131 @10469 has 3 MA's), (149, 10514), (151, 10520), (171, 10556), (180, 10580), (211, 10691),

Gene: Montpel_31 Start: 10649, Stop: 10999, Start Num: 89

Candidate Starts for Montpel_31:

(Start: 89 @10649 has 203 MA's), (104, 10697), (Start: 131 @10745 has 3 MA's), (149, 10790), (151, 10796), (171, 10832), (180, 10856), (211, 10967),

Gene: Mooshroom_73 Start: 44083, Stop: 44394, Start Num: 123

Candidate Starts for Mooshroom_73:

(Start: 123 @44083 has 21 MA's), (149, 44146), (177, 44224), (183, 44245), (191, 44269), (196, 44287), (206, 44317),

Gene: Morizzled23_31 Start: 9769, Stop: 10119, Start Num: 89

Candidate Starts for Morizzled23_31:

(Start: 89 @9769 has 203 MA's), (104, 9817), (Start: 131 @9865 has 3 MA's), (149, 9910), (151, 9916), (171, 9952), (180, 9976), (211, 10087),

Gene: MortyNRick_62 Start: 41583, Stop: 41870, Start Num: 115

Candidate Starts for MortyNRick_62:

(31, 41283), (44, 41334), (48, 41346), (53, 41370), (74, 41457), (Start: 107 @41571 has 1 MA's), (Start: 115 @41583 has 38 MA's), (137, 41628), (174, 41700), (202, 41778), (207, 41802), (213, 41859),

Gene: Mossy_1 Start: 220, Stop: 549, Start Num: 90

Candidate Starts for Mossy_1:

(Start: 90 @220 has 5 MA's), (119, 268), (155, 352), (189, 427), (198, 454), (202, 466),

Gene: Mudcat_68 Start: 45168, Stop: 45479, Start Num: 123

Candidate Starts for Mudcat_68:

(Start: 123 @45168 has 21 MA's), (149, 45231), (177, 45309), (183, 45330), (191, 45354), (196, 45372), (206, 45402),

Gene: Muglass_70 Start: 44241, Stop: 44516, Start Num: 133

Candidate Starts for Muglass_70:

(Start: 118 @44211 has 6 MA's), (133, 44241), (150, 44283), (194, 44409), (211, 44487),

Gene: Mutzi_78 Start: 53560, Stop: 53943, Start Num: 89

Candidate Starts for Mutzi_78:

(Start: 89 @53560 has 203 MA's), (145, 53656), (202, 53764), (213, 53842),

Gene: Myrna_235 Start: 137260, Stop: 137607, Start Num: 112

Candidate Starts for Myrna_235:

(16, 136774), (26, 136918), (34, 136978), (62, 137095), (Start: 112 @137260 has 3 MA's), (137, 137311), (198, 137461), (200, 137467), (203, 137476), (205, 137485), (222, 137599),

Gene: Naija_32 Start: 10373, Stop: 10723, Start Num: 89

Candidate Starts for Naija_32:

(Start: 89 @10373 has 203 MA's), (104, 10421), (Start: 131 @10469 has 3 MA's), (149, 10514), (151, 10520), (171, 10556), (180, 10580), (211, 10691),

Gene: Naira_11 Start: 6952, Stop: 7266, Start Num: 94

Candidate Starts for Naira_11:

(Start: 94 @6952 has 21 MA's), (119, 6991), (158, 7069), (179, 7114),

Gene: Napoleon13_31 Start: 9788, Stop: 10138, Start Num: 89

Candidate Starts for Napoleon13_31:

(Start: 89 @9788 has 203 MA's), (104, 9836), (Start: 131 @9884 has 3 MA's), (149, 9929), (151, 9935), (171, 9971), (180, 9995), (211, 10106),

Gene: NapoleonB_73 Start: 44325, Stop: 44636, Start Num: 123

Candidate Starts for NapoleonB_73:

(Start: 123 @44325 has 21 MA's), (149, 44388), (177, 44466), (183, 44487), (191, 44511), (196, 44529), (206, 44559),

Gene: Nappy_33 Start: 11083, Stop: 11433, Start Num: 89

Candidate Starts for Nappy_33:

(Start: 89 @11083 has 203 MA's), (104, 11131), (Start: 131 @11179 has 3 MA's), (149, 11224), (151, 11230), (171, 11266), (180, 11290), (211, 11401),

Gene: Nason_72 Start: 44474, Stop: 44782, Start Num: 123

Candidate Starts for Nason_72:

(Start: 123 @44474 has 21 MA's), (163, 44576), (177, 44612), (196, 44675), (206, 44705),

Gene: Naval22_34 Start: 10958, Stop: 11308, Start Num: 89

Candidate Starts for Naval22_34:

(Start: 89 @10958 has 203 MA's), (104, 11006), (Start: 131 @11054 has 3 MA's), (149, 11099), (151, 11105), (171, 11141), (180, 11165), (211, 11276),

Gene: NedWong_33 Start: 10918, Stop: 11268, Start Num: 89

Candidate Starts for NedWong_33:

(Start: 89 @10918 has 203 MA's), (104, 10966), (Start: 131 @11014 has 3 MA's), (149, 11059), (151, 11065), (171, 11101), (180, 11125), (211, 11236),

Gene: Ngannou_30 Start: 9549, Stop: 9899, Start Num: 89

Candidate Starts for Ngannou_30:

(Start: 89 @9549 has 203 MA's), (104, 9597), (Start: 131 @9645 has 3 MA's), (149, 9690), (151, 9696), (171, 9732), (180, 9756), (211, 9867),

Gene: Nidhogg_33 Start: 10982, Stop: 11332, Start Num: 89

Candidate Starts for Nidhogg_33:

(Start: 89 @10982 has 203 MA's), (104, 11030), (Start: 131 @11078 has 3 MA's), (149, 11123), (151, 11129), (171, 11165), (180, 11189), (211, 11300),

Gene: Nikan_9 Start: 4093, Stop: 4401, Start Num: 111

Candidate Starts for Nikan_9:

(Start: 111 @4093 has 15 MA's), (198, 4297), (207, 4333),

Gene: Nina_52 Start: 37854, Stop: 37525, Start Num: 94

Candidate Starts for Nina_52:

(Start: 94 @37854 has 21 MA's), (119, 37815), (159, 37722), (189, 37653),

Gene: Nivrat_96 Start: 53965, Stop: 54246, Start Num: 115

Candidate Starts for Nivrat_96:

(18, 53554), (20, 53575), (23, 53596), (25, 53626), (Start: 115 @53965 has 38 MA's), (137, 54010), (144, 54028), (198, 54145),

Gene: NoodleTree_31 Start: 10680, Stop: 11030, Start Num: 89

Candidate Starts for NoodleTree_31:

(Start: 89 @10680 has 203 MA's), (104, 10728), (Start: 131 @10776 has 3 MA's), (149, 10821), (151, 10827), (171, 10863), (180, 10887), (211, 10998),

Gene: Norm_32 Start: 10918, Stop: 11268, Start Num: 89

Candidate Starts for Norm_32:

(Start: 89 @10918 has 203 MA's), (104, 10966), (Start: 131 @11014 has 3 MA's), (149, 11059), (151, 11065), (171, 11101), (180, 11125), (211, 11236),

Gene: NormanBulbieJr_94 Start: 54069, Stop: 54350, Start Num: 115

Candidate Starts for NormanBulbieJr_94:

(18, 53658), (20, 53679), (23, 53700), (25, 53730), (Start: 115 @54069 has 38 MA's), (137, 54114), (144, 54132), (198, 54249),

Gene: NuevoMundo_35 Start: 11972, Stop: 12322, Start Num: 89

Candidate Starts for NuevoMundo_35:

(Start: 89 @11972 has 203 MA's), (104, 12020), (Start: 131 @12068 has 3 MA's), (149, 12113), (151, 12119), (171, 12155), (180, 12179), (211, 12290),

Gene: Octobien14_114 Start: 63585, Stop: 63860, Start Num: 108

Candidate Starts for Octobien14_114:

(71, 63468), (Start: 108 @63585 has 5 MA's), (144, 63651), (212, 63849),

Gene: Odyssey395_10 Start: 3459, Stop: 3866, Start Num: 84

Candidate Starts for Odyssey395_10:

(Start: 84 @3459 has 11 MA's), (99, 3510), (104, 3519), (144, 3606), (164, 3654), (188, 3720), (195, 3738), (200, 3756),

Gene: Ollypop_11 Start: 4172, Stop: 4435, Start Num: 111

Candidate Starts for Ollypop_11:

(Start: 111 @4172 has 15 MA's), (146, 4235), (154, 4256), (184, 4292), (198, 4331),

Gene: Ollypop_7 Start: 3116, Stop: 3523, Start Num: 84

Candidate Starts for Ollypop_7:

(67, 3041), (78, 3092), (Start: 84 @3116 has 11 MA's), (104, 3176), (Start: 121 @3206 has 3 MA's), (164, 3311), (195, 3395), (200, 3413),

Gene: OlympiaSaint_100 Start: 54235, Stop: 54516, Start Num: 115

Candidate Starts for OlympiaSaint_100:

(18, 53824), (20, 53845), (23, 53866), (25, 53896), (Start: 115 @54235 has 38 MA's), (137, 54280), (144, 54298), (198, 54415),

Gene: OneinaGillian_56 Start: 37823, Stop: 37530, Start Num: 111

Candidate Starts for OneinaGillian_56:

(95, 37853), (Start: 108 @37826 has 5 MA's), (Start: 111 @37823 has 15 MA's), (119, 37811), (137, 37772), (139, 37769), (151, 37736), (157, 37724), (165, 37715), (198, 37637), (204, 37616), (207, 37601),

Gene: OrediggerDelux_31 Start: 10918, Stop: 11268, Start Num: 89

Candidate Starts for OrediggerDelux_31:

(Start: 89 @10918 has 203 MA's), (104, 10966), (Start: 131 @11014 has 3 MA's), (149, 11059), (151, 11065), (171, 11101), (180, 11125), (211, 11236),

Gene: Paella_133 Start: 71406, Stop: 71771, Start Num: 118

Candidate Starts for Paella_133:

(Start: 88 @71328 has 1 MA's), (Start: 118 @71406 has 6 MA's), (164, 71517), (189, 71592), (205, 71643),

Gene: Paella_124 Start: 68080, Stop: 68388, Start Num: 131

Candidate Starts for Paella_124:

(Start: 131 @68080 has 3 MA's), (149, 68125), (166, 68164), (200, 68260),

Gene: ParkTD_31 Start: 10918, Stop: 11268, Start Num: 89

Candidate Starts for ParkTD_31:

(Start: 89 @10918 has 203 MA's), (104, 10966), (Start: 131 @11014 has 3 MA's), (149, 11059), (151, 11065), (171, 11101), (180, 11125), (211, 11236),

Gene: Parmesanjohn_55 Start: 36197, Stop: 36685, Start Num: 47

Candidate Starts for Parmesanjohn_55:

(Start: 47 @36197 has 5 MA's), (56, 36233), (Start: 66 @36287 has 5 MA's), (125, 36440), (Start: 127 @36443 has 1 MA's), (143, 36470), (198, 36581), (200, 36587), (213, 36674),

Gene: ParvusTarda_93 Start: 64024, Stop: 64359, Start Num: 96

Candidate Starts for ParvusTarda_93:

(Start: 96 @64024 has 2 MA's), (100, 64033), (105, 64042), (Start: 111 @64051 has 15 MA's), (137, 64099), (198, 64252), (205, 64276), (213, 64345),

Gene: Patter_32 Start: 10390, Stop: 10740, Start Num: 89

Candidate Starts for Patter_32:

(Start: 89 @10390 has 203 MA's), (104, 10438), (Start: 131 @10486 has 3 MA's), (149, 10531), (151, 10537), (171, 10573), (180, 10597), (211, 10708),

Gene: PauloDiaboli_215 Start: 113653, Stop: 113336, Start Num: 91

Candidate Starts for PauloDiaboli_215:

(Start: 91 @113653 has 3 MA's), (157, 113536), (185, 113497), (198, 113458), (210, 113401), (220, 113341),

Gene: Peas_65 Start: 41993, Stop: 42271, Start Num: 111

Candidate Starts for Peas_65:

(13, 41477), (49, 41768), (76, 41897), (Start: 111 @41993 has 15 MA's), (197, 42167), (198, 42170), (207, 42206), (212, 42260),

Gene: Pepe25_55 Start: 37387, Stop: 37064, Start Num: 111

Candidate Starts for Pepe25_55:

(95, 37417), (Start: 108 @37390 has 5 MA's), (Start: 111 @37387 has 15 MA's), (119, 37375), (130, 37351), (137, 37336), (151, 37300), (157, 37288), (169, 37258), (184, 37213), (198, 37174),

Gene: Perkunas_2 Start: 448, Stop: 780, Start Num: 90

Candidate Starts for Perkunas_2:

(Start: 90 @448 has 5 MA's), (129, 514), (198, 682), (205, 706),

Gene: Phabba_246 Start: 137077, Stop: 137433, Start Num: 112

Candidate Starts for Phabba_246:

(28, 136756), (59, 136897), (Start: 112 @137077 has 3 MA's), (137, 137128), (168, 137203), (181, 137236), (184, 137245), (198, 137287), (200, 137293), (203, 137302), (205, 137311),

Gene: PharkleMinkus_37 Start: 12486, Stop: 12836, Start Num: 89

Candidate Starts for PharkleMinkus_37:

(Start: 89 @12486 has 203 MA's), (104, 12534), (Start: 131 @12582 has 3 MA's), (149, 12627), (151, 12633), (180, 12693), (211, 12804),

Gene: Philus_98 Start: 54977, Stop: 55258, Start Num: 115

Candidate Starts for Philus_98:

(18, 54566), (20, 54587), (23, 54608), (25, 54638), (Start: 115 @54977 has 38 MA's), (137, 55022), (144, 55040), (198, 55157),

Gene: Phlegm_34 Start: 10373, Stop: 10723, Start Num: 89

Candidate Starts for Phlegm_34:

(Start: 89 @10373 has 203 MA's), (104, 10421), (Start: 131 @10469 has 3 MA's), (149, 10514), (151, 10520), (171, 10556), (180, 10580), (211, 10691),

Gene: Phlop_78 Start: 52902, Stop: 53273, Start Num: 89

Candidate Starts for Phlop_78:

(41, 52719), (Start: 89 @52902 has 203 MA's), (198, 53079), (205, 53103),

Gene: Phloss_53 Start: 35604, Stop: 36092, Start Num: 47

Candidate Starts for Phloss_53:

(Start: 47 @35604 has 5 MA's), (56, 35640), (Start: 66 @35694 has 5 MA's), (125, 35847), (Start: 127 @35850 has 1 MA's), (143, 35877), (198, 35988), (200, 35994), (213, 36081),

Gene: Phox_31 Start: 11082, Stop: 11432, Start Num: 89

Candidate Starts for Phox_31:

(Start: 89 @11082 has 203 MA's), (104, 11130), (Start: 131 @11178 has 3 MA's), (149, 11223), (151, 11229), (171, 11265), (180, 11289), (211, 11400),

Gene: Phusco_32 Start: 10369, Stop: 10719, Start Num: 89

Candidate Starts for Phusco_32:

(Start: 89 @10369 has 203 MA's), (104, 10417), (Start: 131 @10465 has 3 MA's), (149, 10510), (151, 10516), (171, 10552), (180, 10576), (211, 10687),

Gene: PhuzzTulsa_6 Start: 3249, Stop: 3656, Start Num: 84

Candidate Starts for PhuzzTulsa_6:

(Start: 84 @3249 has 11 MA's), (99, 3300), (104, 3309), (144, 3396), (164, 3444), (188, 3510), (195, 3528), (200, 3546),

Gene: Pier_34 Start: 11076, Stop: 11426, Start Num: 89

Candidate Starts for Pier_34:

(Start: 89 @11076 has 203 MA's), (104, 11124), (Start: 131 @11172 has 3 MA's), (149, 11217), (151, 11223), (171, 11259), (180, 11283), (211, 11394),

Gene: PinkPlastic_9 Start: 6480, Stop: 6794, Start Num: 94

Candidate Starts for PinkPlastic_9:

(Start: 94 @6480 has 21 MA's), (119, 6519), (128, 6528), (158, 6597), (190, 6672), (207, 6732),

Gene: Pio_35 Start: 11767, Stop: 12117, Start Num: 89

Candidate Starts for Pio_35:

(Start: 89 @11767 has 203 MA's), (104, 11815), (Start: 131 @11863 has 3 MA's), (149, 11908), (151, 11914), (171, 11950), (180, 11974), (211, 12085),

Gene: Pipp_48 Start: 34437, Stop: 34712, Start Num: 86

Candidate Starts for Pipp_48:

(Start: 86 @34437 has 1 MA's), (198, 34608), (205, 34632),

Gene: Pippy_94 Start: 52340, Stop: 52621, Start Num: 115

Candidate Starts for Pippy_94:

(18, 51929), (20, 51950), (23, 51971), (25, 52001), (Start: 115 @52340 has 38 MA's), (137, 52385), (144, 52403), (198, 52520),

Gene: Pipsqueaks_56 Start: 36265, Stop: 36663, Start Num: 66

Candidate Starts for Pipsqueaks_56:

(Start: 47 @36175 has 5 MA's), (56, 36211), (Start: 66 @36265 has 5 MA's), (125, 36418), (Start: 127 @36421 has 1 MA's), (143, 36448), (198, 36559), (200, 36565), (213, 36652),

Gene: Pivoine_32 Start: 10373, Stop: 10723, Start Num: 89

Candidate Starts for Pivoine_32:

(Start: 89 @10373 has 203 MA's), (104, 10421), (Start: 131 @10469 has 3 MA's), (149, 10514), (151, 10520), (171, 10556), (180, 10580), (211, 10691),

Gene: Pleione_34 Start: 10918, Stop: 11268, Start Num: 89

Candidate Starts for Pleione_34:

(Start: 89 @10918 has 203 MA's), (104, 10966), (Start: 131 @11014 has 3 MA's), (149, 11059), (151, 11065), (171, 11101), (180, 11125), (211, 11236),

Gene: Pointis_8 Start: 3460, Stop: 3867, Start Num: 84

Candidate Starts for Pointis_8:

(Start: 84 @3460 has 11 MA's), (99, 3511), (104, 3520), (144, 3607), (164, 3655), (188, 3721), (195, 3739), (200, 3757),

Gene: Popstraw_8 Start: 3443, Stop: 3850, Start Num: 84

Candidate Starts for Popstraw_8:

(Start: 84 @3443 has 11 MA's), (99, 3494), (104, 3503), (144, 3590), (164, 3638), (188, 3704), (195, 3722), (200, 3740),

Gene: Portcullis_81 Start: 52908, Stop: 53279, Start Num: 89

Candidate Starts for Portcullis_81:

(41, 52725), (Start: 89 @52908 has 203 MA's), (198, 53085), (205, 53109),

Gene: Primadonna_27 Start: 10022, Stop: 10372, Start Num: 89

Candidate Starts for Primadonna_27:

(Start: 89 @10022 has 203 MA's), (104, 10070), (Start: 131 @10118 has 3 MA's), (149, 10163), (151, 10169), (180, 10229), (211, 10340),

Gene: Priscilla_97 Start: 54167, Stop: 54448, Start Num: 115

Candidate Starts for Priscilla_97:

(18, 53756), (20, 53777), (23, 53798), (25, 53828), (Start: 115 @54167 has 38 MA's), (137, 54212), (144, 54230), (198, 54347),

Gene: PullumCavea_79 Start: 53079, Stop: 53450, Start Num: 89

Candidate Starts for PullumCavea_79:

(41, 52896), (Start: 89 @53079 has 203 MA's), (198, 53256), (205, 53280),

Gene: Pumpernickel_196 Start: 112347, Stop: 112042, Start Num: 91

Candidate Starts for Pumpernickel_196:

(Start: 91 @112347 has 3 MA's), (93, 112341), (134, 112272), (199, 112170), (219, 112059),

Gene: PurduePete_31 Start: 10629, Stop: 10979, Start Num: 89

Candidate Starts for PurduePete_31:

(Start: 89 @10629 has 203 MA's), (104, 10677), (Start: 131 @10725 has 3 MA's), (149, 10770), (151, 10776), (171, 10812), (180, 10836), (211, 10947),

Gene: Pureglobe5_10 Start: 3473, Stop: 3880, Start Num: 84

Candidate Starts for Pureglobe5_10:

(Start: 84 @3473 has 11 MA's), (99, 3524), (104, 3533), (144, 3620), (164, 3668), (188, 3734), (195, 3752), (200, 3770),

Gene: QBert_30 Start: 11082, Stop: 11432, Start Num: 89

Candidate Starts for QBert_30:

(Start: 89 @11082 has 203 MA's), (104, 11130), (Start: 131 @11178 has 3 MA's), (149, 11223), (151, 11229), (171, 11265), (180, 11289), (211, 11400),

Gene: Quasimodo_32 Start: 11333, Stop: 11683, Start Num: 89

Candidate Starts for Quasimodo_32:

(Start: 89 @11333 has 203 MA's), (104, 11381), (Start: 131 @11429 has 3 MA's), (149, 11474), (151, 11480), (171, 11516), (180, 11540), (211, 11651),

Gene: Qui_124 Start: 68080, Stop: 68388, Start Num: 131

Candidate Starts for Qui_124:

(Start: 131 @68080 has 3 MA's), (149, 68125), (166, 68164), (200, 68260),

Gene: Qui_133 Start: 71406, Stop: 71771, Start Num: 118

Candidate Starts for Qui_133:

(Start: 88 @71328 has 1 MA's), (Start: 118 @71406 has 6 MA's), (164, 71517), (189, 71592), (205, 71643),

Gene: RIPWilbur_6 Start: 2867, Stop: 3274, Start Num: 84

Candidate Starts for RIPWilbur_6:

(Start: 84 @2867 has 11 MA's), (99, 2918), (104, 2927), (144, 3014), (164, 3062), (188, 3128), (200, 3164),

Gene: Rahel_32 Start: 10369, Stop: 10719, Start Num: 89

Candidate Starts for Rahel_32:

(Start: 89 @10369 has 203 MA's), (104, 10417), (Start: 131 @10465 has 3 MA's), (149, 10510), (151, 10516), (171, 10552), (180, 10576), (211, 10687),

Gene: Rajelicia_10 Start: 6620, Stop: 6934, Start Num: 94

Candidate Starts for Rajelicia_10:

(Start: 94 @6620 has 21 MA's), (119, 6659), (128, 6668), (158, 6737), (190, 6812), (207, 6872),

Gene: Ranunculus_6 Start: 3041, Stop: 3424, Start Num: 84

Candidate Starts for Ranunculus_6:

(Start: 84 @3041 has 11 MA's), (164, 3236), (189, 3305), (195, 3320), (199, 3335), (200, 3338),

Gene: RazzB_7 Start: 2835, Stop: 3242, Start Num: 84

Candidate Starts for RazzB_7:

(Start: 84 @2835 has 11 MA's), (99, 2886), (104, 2895), (144, 2982), (164, 3030), (188, 3096), (195, 3114), (200, 3132),

Gene: RedBaron_55 Start: 37907, Stop: 37578, Start Num: 94

Candidate Starts for RedBaron_55:

(Start: 94 @37907 has 21 MA's), (119, 37868), (159, 37775), (189, 37706),

Gene: Ren19_8 Start: 4093, Stop: 4401, Start Num: 111

Candidate Starts for Ren19_8:

(Start: 111 @4093 has 15 MA's), (198, 4297), (207, 4333),

Gene: Renaldo_76 Start: 45093, Stop: 45398, Start Num: 118

Candidate Starts for Renaldo_76:

(Start: 118 @45093 has 6 MA's), (150, 45165), (194, 45291), (211, 45369),

Gene: Rizal_30 Start: 9835, Stop: 10185, Start Num: 89

Candidate Starts for Rizal_30:

(Start: 89 @9835 has 203 MA's), (104, 9883), (Start: 131 @9931 has 3 MA's), (149, 9976), (151, 9982), (171, 10018), (180, 10042), (211, 10153),

Gene: Rizwana_7 Start: 3422, Stop: 3844, Start Num: 89

Candidate Starts for Rizwana_7:

(72, 3356), (Start: 89 @3422 has 203 MA's), (97, 3458), (119, 3500), (144, 3560), (199, 3707), (200, 3710),

Gene: RoMag_27 Start: 10167, Stop: 10517, Start Num: 89

Candidate Starts for RoMag_27:

(Start: 89 @10167 has 203 MA's), (104, 10215), (Start: 131 @10263 has 3 MA's), (149, 10308), (151, 10314), (171, 10350), (180, 10374), (211, 10485),

Gene: RobinRose_58 Start: 38338, Stop: 38039, Start Num: 108

Candidate Starts for RobinRose_58:

(95, 38365), (Start: 108 @38338 has 5 MA's), (Start: 111 @38335 has 15 MA's), (119, 38323), (130, 38299), (137, 38284), (157, 38236), (165, 38227), (182, 38191), (198, 38149), (204, 38128),

Gene: Rocha_30 Start: 9863, Stop: 10213, Start Num: 89

Candidate Starts for Rocha_30:

(Start: 89 @9863 has 203 MA's), (104, 9911), (Start: 131 @9959 has 3 MA's), (149, 10004), (151, 10010), (171, 10046), (180, 10070), (211, 10181),

Gene: Rockabye_69 Start: 29857, Stop: 30210, Start Num: 87

Candidate Starts for Rockabye_69:

(Start: 87 @29857 has 1 MA's), (189, 30079),

Gene: RogerDodger_84 Start: 53667, Stop: 54038, Start Num: 89

Candidate Starts for RogerDodger_84:

(41, 53484), (Start: 89 @53667 has 203 MA's), (198, 53844), (205, 53868),

Gene: Romm_58 Start: 38320, Stop: 38039, Start Num: 119

Candidate Starts for Romm_58:

(95, 38362), (Start: 108 @38335 has 5 MA's), (Start: 111 @38332 has 15 MA's), (119, 38320), (137, 38281), (139, 38278), (151, 38245), (157, 38233), (165, 38224), (198, 38146), (204, 38125), (207, 38110),

Gene: Ronan_27 Start: 8475, Stop: 8825, Start Num: 89

Candidate Starts for Ronan_27:

(Start: 89 @8475 has 203 MA's), (104, 8523), (Start: 131 @8571 has 3 MA's), (149, 8616), (151, 8622), (171, 8658), (180, 8682), (211, 8793),

Gene: Roots515_32 Start: 10917, Stop: 11267, Start Num: 89

Candidate Starts for Roots515_32:

(Start: 89 @10917 has 203 MA's), (104, 10965), (Start: 131 @11013 has 3 MA's), (149, 11058), (151, 11064), (171, 11100), (180, 11124), (211, 11235),

Gene: SJReid_70 Start: 30780, Stop: 31085, Start Num: 87

Candidate Starts for SJReid_70:

(Start: 87 @30780 has 1 MA's),

Gene: SVoro_31 Start: 10912, Stop: 11262, Start Num: 89

Candidate Starts for SVoro_31:

(Start: 89 @10912 has 203 MA's), (104, 10960), (Start: 131 @11008 has 3 MA's), (149, 11053), (151, 11059), (171, 11095), (180, 11119), (211, 11230),

Gene: Saal_94 Start: 53731, Stop: 54012, Start Num: 115

Candidate Starts for Saal_94:

(18, 53320), (20, 53341), (23, 53362), (25, 53392), (Start: 115 @53731 has 38 MA's), (137, 53776), (144, 53794), (198, 53911),

Gene: SadLad_63 Start: 46437, Stop: 46174, Start Num: 121

Candidate Starts for SadLad_63:

(Start: 121 @46437 has 3 MA's), (133, 46410), (142, 46389), (198, 46278), (207, 46242), (213, 46185),

Gene: Salacia_34 Start: 10918, Stop: 11268, Start Num: 89

Candidate Starts for Salacia_34:

(Start: 89 @10918 has 203 MA's), (104, 10966), (Start: 131 @11014 has 3 MA's), (149, 11059), (151, 11065), (171, 11101), (180, 11125), (211, 11236),

Gene: Salvador_80 Start: 53022, Stop: 53375, Start Num: 89

Candidate Starts for Salvador_80:

(Start: 89 @53022 has 203 MA's), (207, 53217),

Gene: Sandalphon_96 Start: 54715, Stop: 55005, Start Num: 109

Candidate Starts for Sandalphon_96:

(Start: 109 @54715 has 1 MA's), (137, 54769), (144, 54787), (198, 54904),

Gene: Sauce_33 Start: 11045, Stop: 11395, Start Num: 89

Candidate Starts for Sauce_33:

(Start: 89 @11045 has 203 MA's), (104, 11093), (Start: 131 @11141 has 3 MA's), (149, 11186), (151, 11192), (171, 11228), (180, 11252), (211, 11363),

Gene: Schnauzer_56 Start: 36197, Stop: 36685, Start Num: 47

Candidate Starts for Schnauzer_56:

(Start: 47 @36197 has 5 MA's), (56, 36233), (Start: 66 @36287 has 5 MA's), (125, 36440), (Start: 127 @36443 has 1 MA's), (143, 36470), (198, 36581), (200, 36587), (213, 36674),

Gene: ScoobyDoobyDoo_233 Start: 134075, Stop: 134443, Start Num: 112

Candidate Starts for ScoobyDoobyDoo_233:

(Start: 112 @134075 has 3 MA's), (178, 134234), (200, 134303), (205, 134321), (212, 134387), (218, 134414),

Gene: ScottMcG_32 Start: 11225, Stop: 11575, Start Num: 89

Candidate Starts for ScottMcG_32:

(Start: 89 @11225 has 203 MA's), (104, 11273), (Start: 131 @11321 has 3 MA's), (149, 11366), (151, 11372), (171, 11408), (180, 11432), (211, 11543),

Gene: Seabiscuit_12 Start: 6693, Stop: 7034, Start Num: 88

Candidate Starts for Seabiscuit_12:

(Start: 88 @6693 has 1 MA's), (Start: 94 @6720 has 21 MA's), (119, 6759), (128, 6768), (158, 6837), (190, 6912), (207, 6972),

Gene: Sebata_32 Start: 11268, Stop: 11618, Start Num: 89

Candidate Starts for Sebata_32:

(Start: 89 @11268 has 203 MA's), (104, 11316), (Start: 131 @11364 has 3 MA's), (149, 11409), (151, 11415), (171, 11451), (180, 11475), (211, 11586),

Gene: Sephiroth_114 Start: 64560, Stop: 64826, Start Num: 108

Candidate Starts for Sephiroth_114:

(71, 64443), (Start: 108 @64560 has 5 MA's), (201, 64734), (212, 64815),

Gene: SeresaTree_71 Start: 55390, Stop: 55779, Start Num: 120

Candidate Starts for SeresaTree_71:

(Start: 120 @55390 has 7 MA's), (160, 55477), (162, 55486), (189, 55558), (192, 55564), (224, 55741), (226, 55750),

Gene: Sham_67 Start: 56064, Stop: 56453, Start Num: 120

Candidate Starts for Sham_67:

(Start: 120 @56064 has 7 MA's), (133, 56091), (192, 56238), (226, 56424),

Gene: Shaqnato_28 Start: 9480, Stop: 9830, Start Num: 89

Candidate Starts for Shaqnato_28:

(Start: 89 @9480 has 203 MA's), (104, 9528), (Start: 131 @9576 has 3 MA's), (149, 9621), (151, 9627), (171, 9663), (180, 9687), (211, 9798),

Gene: ShiLan_99 Start: 55748, Stop: 56029, Start Num: 115

Candidate Starts for ShiLan_99:

(18, 55337), (20, 55358), (23, 55379), (25, 55409), (Start: 115 @55748 has 38 MA's), (137, 55793), (144, 55811), (198, 55928), (207, 55964),

Gene: ShiaLabeouf_32 Start: 10369, Stop: 10719, Start Num: 89

Candidate Starts for ShiaLabeouf_32:

(Start: 89 @10369 has 203 MA's), (104, 10417), (Start: 131 @10465 has 3 MA's), (149, 10510), (151, 10516), (171, 10552), (180, 10576), (211, 10687),

Gene: Shifa_29 Start: 10551, Stop: 10901, Start Num: 89

Candidate Starts for Shifa_29:

(Start: 89 @10551 has 203 MA's), (104, 10599), (Start: 131 @10647 has 3 MA's), (149, 10692), (151, 10698), (171, 10734), (180, 10758), (211, 10869),

Gene: Shinji_80 Start: 53025, Stop: 53456, Start Num: 89

Candidate Starts for Shinji_80:

(Start: 89 @53025 has 203 MA's), (104, 53073), (176, 53208), (186, 53235), (187, 53238), (205, 53286),

Gene: Shnickers_32 Start: 10369, Stop: 10719, Start Num: 89

Candidate Starts for Shnickers_32:

(Start: 89 @10369 has 203 MA's), (104, 10417), (Start: 131 @10465 has 3 MA's), (149, 10510), (151, 10516), (171, 10552), (180, 10576), (211, 10687),

Gene: Shocker_3 Start: 902, Stop: 1168, Start Num: 117

Candidate Starts for Shocker_3:

(Start: 117 @902 has 1 MA's), (142, 956), (198, 1067),

Gene: ShowerHandel_97 Start: 53013, Stop: 53294, Start Num: 115

Candidate Starts for ShowerHandel_97:

(18, 52602), (20, 52623), (23, 52644), (25, 52674), (Start: 115 @53013 has 38 MA's), (137, 53058), (144, 53076), (198, 53193),

Gene: Shrimp_32 Start: 10922, Stop: 11272, Start Num: 89

Candidate Starts for Shrimp_32:

(Start: 89 @10922 has 203 MA's), (104, 10970), (Start: 131 @11018 has 3 MA's), (149, 11063), (151, 11069), (171, 11105), (180, 11129), (211, 11240),

Gene: SilentRX_7 Start: 2575, Stop: 2988, Start Num: 89

Candidate Starts for SilentRX_7:

(Start: 89 @2575 has 203 MA's), (124, 2665), (167, 2764), (175, 2782), (206, 2878),

Gene: SilverDipper_33 Start: 10373, Stop: 10723, Start Num: 89

Candidate Starts for SilverDipper_33:

(Start: 89 @10373 has 203 MA's), (104, 10421), (Start: 131 @10469 has 3 MA's), (149, 10514), (151, 10520), (171, 10556), (180, 10580), (211, 10691),

Gene: Slagathor_11 Start: 6591, Stop: 6905, Start Num: 94

Candidate Starts for Slagathor_11:

(Start: 94 @6591 has 21 MA's), (119, 6630), (128, 6639), (158, 6708), (190, 6783), (207, 6843),

Gene: SmallFry_32 Start: 10369, Stop: 10719, Start Num: 89

Candidate Starts for SmallFry_32:

(Start: 89 @10369 has 203 MA's), (104, 10417), (Start: 131 @10465 has 3 MA's), (149, 10510), (151, 10516), (171, 10552), (180, 10576), (211, 10687),

Gene: SmokingBunny_81 Start: 54018, Stop: 54371, Start Num: 89

Candidate Starts for SmokingBunny_81:

(Start: 89 @54018 has 203 MA's), (207, 54213),

Gene: Smurph_55 Start: 36197, Stop: 36685, Start Num: 47

Candidate Starts for Smurph_55:

(Start: 47 @36197 has 5 MA's), (56, 36233), (Start: 66 @36287 has 5 MA's), (125, 36440), (Start: 127 @36443 has 1 MA's), (143, 36470), (198, 36581), (200, 36587), (213, 36674),

Gene: SoilAssassin_55 Start: 39034, Stop: 39414, Start Num: 83

Candidate Starts for SoilAssassin_55:

(Start: 83 @39034 has 3 MA's), (102, 39088), (161, 39217), (179, 39253), (189, 39280), (190, 39283), (200, 39313), (205, 39331), (207, 39343), (213, 39400),

Gene: Spec_30 Start: 10375, Stop: 10725, Start Num: 89

Candidate Starts for Spec_30:

(Start: 89 @10375 has 203 MA's), (104, 10423), (Start: 131 @10471 has 3 MA's), (149, 10516), (151, 10522), (171, 10558), (180, 10582), (211, 10693),

Gene: Specks_37 Start: 12207, Stop: 12557, Start Num: 89

Candidate Starts for Specks_37:

(Start: 89 @12207 has 203 MA's), (104, 12255), (Start: 131 @12303 has 3 MA's), (149, 12348), (151, 12354), (171, 12390), (180, 12414), (211, 12525),

Gene: SpeedDemon_540 Start: 45518, Stop: 45787, Start Num: 89

Candidate Starts for SpeedDemon_540:

(Start: 89 @45518 has 203 MA's), (104, 45566), (187, 45662), (198, 45686),

Gene: Spoonbill_96 Start: 51661, Stop: 51942, Start Num: 115

Candidate Starts for Spoonbill_96:

(18, 51250), (20, 51271), (23, 51292), (25, 51322), (Start: 115 @51661 has 38 MA's), (137, 51706), (144, 51724), (198, 51841),

Gene: Sprinklers_32 Start: 10407, Stop: 10757, Start Num: 89

Candidate Starts for Sprinklers_32:

(Start: 89 @10407 has 203 MA's), (104, 10455), (Start: 131 @10503 has 3 MA's), (149, 10548), (151, 10554), (171, 10590), (180, 10614), (211, 10725),

Gene: Spud_34 Start: 11764, Stop: 12114, Start Num: 89

Candidate Starts for Spud_34:

(Start: 89 @11764 has 203 MA's), (104, 11812), (Start: 131 @11860 has 3 MA's), (149, 11905), (151, 11911), (171, 11947), (180, 11971), (211, 12082),

Gene: Squee_11 Start: 7115, Stop: 7429, Start Num: 94

Candidate Starts for Squee_11:

(Start: 94 @7115 has 21 MA's), (119, 7154), (158, 7232), (179, 7277),

Gene: Squiddly_103 Start: 56800, Stop: 57090, Start Num: 89

Candidate Starts for Squiddly_103:

(44, 56620), (46, 56623), (63, 56704), (77, 56770), (Start: 89 @56800 has 203 MA's), (152, 56917), (192, 56971), (207, 57028),

Gene: SrishMeg2525_31 Start: 10629, Stop: 10979, Start Num: 89

Candidate Starts for SrishMeg2525_31:

(Start: 89 @10629 has 203 MA's), (104, 10677), (Start: 131 @10725 has 3 MA's), (149, 10770), (151, 10776), (171, 10812), (180, 10836), (211, 10947),

Gene: StAugustine_144 Start: 85407, Stop: 85078, Start Num: 111

Candidate Starts for StAugustine_144:

(Start: 111 @85407 has 15 MA's), (140, 85350), (189, 85212), (197, 85188), (208, 85140),

Gene: Stardom_72 Start: 43676, Stop: 43987, Start Num: 123

Candidate Starts for Stardom_72:

(Start: 123 @43676 has 21 MA's), (149, 43739), (177, 43817), (183, 43838), (191, 43862), (196, 43880), (206, 43910),

Gene: Stellammi_137 Start: 61212, Stop: 61520, Start Num: 111

Candidate Starts for Stellammi_137:

(103, 61200), (Start: 111 @61212 has 15 MA's), (137, 61263), (198, 61413),

Gene: StephanieG_32 Start: 11098, Stop: 11448, Start Num: 89

Candidate Starts for StephanieG_32:

(Start: 89 @11098 has 203 MA's), (104, 11146), (Start: 131 @11194 has 3 MA's), (149, 11239), (151, 11245), (171, 11281), (180, 11305), (211, 11416),

Gene: StubbySaigey_31 Start: 9558, Stop: 9908, Start Num: 89

Candidate Starts for StubbySaigey_31:

(Start: 89 @9558 has 203 MA's), (104, 9606), (Start: 131 @9654 has 3 MA's), (149, 9699), (151, 9705), (171, 9741), (180, 9765), (211, 9876),

Gene: Substance289_29 Start: 9843, Stop: 10193, Start Num: 89

Candidate Starts for Substance289_29:

(Start: 89 @9843 has 203 MA's), (104, 9891), (Start: 131 @9939 has 3 MA's), (149, 9984), (151, 9990), (171, 10026), (180, 10050), (211, 10161),

Gene: Sunfish_12 Start: 3876, Stop: 4208, Start Num: 94

Candidate Starts for Sunfish_12:

(43, 3663), (Start: 94 @3876 has 21 MA's), (126, 3927), (136, 3951), (157, 4002), (189, 4071), (207, 4134),

Gene: SwagPiggett_98 Start: 54867, Stop: 55148, Start Num: 115

Candidate Starts for SwagPiggett_98:

(18, 54456), (20, 54477), (23, 54498), (25, 54528), (Start: 115 @54867 has 38 MA's), (137, 54912), (144, 54930), (198, 55047),

Gene: Switzer_11 Start: 6599, Stop: 6913, Start Num: 94

Candidate Starts for Switzer_11:

(Start: 88 @6572 has 1 MA's), (Start: 94 @6599 has 21 MA's), (119, 6638), (128, 6647), (158, 6716), (190, 6791), (207, 6851),

Gene: Syleon_119 Start: 65342, Stop: 65608, Start Num: 108

Candidate Starts for Syleon_119:

(71, 65225), (Start: 108 @65342 has 5 MA's), (201, 65516), (212, 65597),

Gene: Tainan_37 Start: 12485, Stop: 12835, Start Num: 89

Candidate Starts for Tainan_37:

(Start: 89 @12485 has 203 MA's), (104, 12533), (Start: 131 @12581 has 3 MA's), (149, 12626), (151, 12632), (180, 12692), (211, 12803),

Gene: Teardrop_31 Start: 9834, Stop: 10184, Start Num: 89

Candidate Starts for Teardrop_31:

(Start: 89 @9834 has 203 MA's), (104, 9882), (Start: 131 @9930 has 3 MA's), (149, 9975), (151, 9981), (171, 10017), (180, 10041), (211, 10152),

Gene: Tempo_56 Start: 38215, Stop: 37919, Start Num: 111

Candidate Starts for Tempo_56:

(95, 38245), (Start: 108 @38218 has 5 MA's), (Start: 111 @38215 has 15 MA's), (119, 38203), (130, 38179), (137, 38164), (157, 38116), (165, 38107), (182, 38071), (198, 38029), (204, 38008),

Gene: Tessdabest_55 Start: 36420, Stop: 36818, Start Num: 66

Candidate Starts for Tessdabest_55:

(Start: 47 @36330 has 5 MA's), (56, 36366), (Start: 66 @36420 has 5 MA's), (125, 36573), (Start: 127 @36576 has 1 MA's), (143, 36603), (198, 36714), (200, 36720), (213, 36807),

Gene: TinyTim_32 Start: 10918, Stop: 11268, Start Num: 89

Candidate Starts for TinyTim_32:

(Start: 89 @10918 has 203 MA's), (104, 10966), (Start: 131 @11014 has 3 MA's), (149, 11059), (151, 11065), (171, 11101), (180, 11125), (211, 11236),

Gene: Togo_80 Start: 54018, Stop: 54371, Start Num: 89

Candidate Starts for Togo_80:

(Start: 89 @54018 has 203 MA's), (207, 54213),

Gene: Tonenili_36 Start: 12007, Stop: 12357, Start Num: 89

Candidate Starts for Tonenili_36:

(59, 11887), (Start: 89 @12007 has 203 MA's), (104, 12055), (Start: 131 @12103 has 3 MA's), (149, 12148), (151, 12154), (180, 12214), (211, 12325),

Gene: Tortellini_63 Start: 43457, Stop: 43750, Start Num: 107
Candidate Starts for Tortellini_63:
(29, 43202), (33, 43223), (55, 43301), (70, 43364), (79, 43400), (Start: 107 @43457 has 1 MA's), (137, 43511), (184, 43607), (198, 43646), (205, 43670), (213, 43739),

Gene: Tortoise16_31 Start: 10369, Stop: 10719, Start Num: 89
Candidate Starts for Tortoise16_31:
(Start: 89 @10369 has 203 MA's), (104, 10417), (Start: 131 @10465 has 3 MA's), (149, 10510), (151, 10516), (171, 10552), (180, 10576), (211, 10687),

Gene: Tribby_76 Start: 45227, Stop: 45535, Start Num: 123
Candidate Starts for Tribby_76:
(Start: 123 @45227 has 21 MA's), (163, 45329), (177, 45365), (196, 45428), (206, 45458),

Gene: Trinitium_31 Start: 9823, Stop: 10173, Start Num: 89
Candidate Starts for Trinitium_31:
(Start: 89 @9823 has 203 MA's), (104, 9871), (Start: 131 @9919 has 3 MA's), (149, 9964), (151, 9970), (171, 10006), (180, 10030), (211, 10141),

Gene: TunaTartare_69 Start: 56371, Stop: 56772, Start Num: 120
Candidate Starts for TunaTartare_69:
(Start: 120 @56371 has 7 MA's), (172, 56482), (178, 56509), (179, 56515), (189, 56545), (213, 56665), (221, 56704),

Gene: Turret_30 Start: 9546, Stop: 9896, Start Num: 89
Candidate Starts for Turret_30:
(Start: 89 @9546 has 203 MA's), (104, 9594), (Start: 131 @9642 has 3 MA's), (149, 9687), (151, 9693), (171, 9729), (180, 9753), (211, 9864),

Gene: Twister6_81 Start: 52367, Stop: 52720, Start Num: 89
Candidate Starts for Twister6_81:
(Start: 89 @52367 has 203 MA's), (207, 52562),

Gene: Tyke_34 Start: 11781, Stop: 12131, Start Num: 89
Candidate Starts for Tyke_34:
(Start: 89 @11781 has 203 MA's), (104, 11829), (Start: 131 @11877 has 3 MA's), (149, 11922), (151, 11928), (171, 11964), (180, 11988), (211, 12099),

Gene: U2_10 Start: 6601, Stop: 6915, Start Num: 94
Candidate Starts for U2_10:
(Start: 88 @6574 has 1 MA's), (Start: 94 @6601 has 21 MA's), (119, 6640), (128, 6649), (158, 6718), (190, 6793), (207, 6853),

Gene: Untouchable_2 Start: 479, Stop: 808, Start Num: 90
Candidate Starts for Untouchable_2:
(Start: 90 @479 has 5 MA's), (129, 545), (189, 686), (198, 713), (202, 725),

Gene: Valary_81 Start: 53764, Stop: 54165, Start Num: 89
Candidate Starts for Valary_81:
(Start: 89 @53764 has 203 MA's), (104, 53812), (198, 53971), (205, 53995), (207, 54007),

Gene: ValleyTerrace_32 Start: 10373, Stop: 10723, Start Num: 89
Candidate Starts for ValleyTerrace_32:

(Start: 89 @10373 has 203 MA's), (104, 10421), (Start: 131 @10469 has 3 MA's), (149, 10514), (151, 10520), (171, 10556), (180, 10580), (211, 10691),

Gene: Vivum_96 Start: 55102, Stop: 55383, Start Num: 115

Candidate Starts for Vivum_96:

(18, 54691), (20, 54712), (23, 54733), (25, 54763), (Start: 115 @55102 has 38 MA's), (137, 55147), (144, 55165), (198, 55282),

Gene: Vordorf_53 Start: 39065, Stop: 39475, Start Num: 64

Candidate Starts for Vordorf_53:

(12, 38624), (17, 38795), (32, 38936), (54, 39017), (57, 39023), (64, 39065), (81, 39131), (116, 39221), (Start: 127 @39242 has 1 MA's), (158, 39278),

Gene: Vortrix_38 Start: 12468, Stop: 12818, Start Num: 89

Candidate Starts for Vortrix_38:

(59, 12348), (Start: 89 @12468 has 203 MA's), (104, 12516), (Start: 131 @12564 has 3 MA's), (149, 12609), (151, 12615), (180, 12675), (211, 12786),

Gene: Wally_31 Start: 9790, Stop: 10140, Start Num: 89

Candidate Starts for Wally_31:

(Start: 89 @9790 has 203 MA's), (104, 9838), (Start: 131 @9886 has 3 MA's), (149, 9931), (151, 9937), (171, 9973), (180, 9997), (211, 10108),

Gene: Whouxphf_100 Start: 54173, Stop: 54454, Start Num: 115

Candidate Starts for Whouxphf_100:

(18, 53762), (20, 53783), (23, 53804), (25, 53834), (Start: 115 @54173 has 38 MA's), (137, 54218), (144, 54236), (198, 54353),

Gene: Willis_32 Start: 10813, Stop: 11163, Start Num: 89

Candidate Starts for Willis_32:

(Start: 89 @10813 has 203 MA's), (104, 10861), (Start: 131 @10909 has 3 MA's), (149, 10954), (151, 10960), (171, 10996), (180, 11020), (211, 11131),

Gene: Wizard_77 Start: 52852, Stop: 53223, Start Num: 89

Candidate Starts for Wizard_77:

(41, 52669), (Start: 89 @52852 has 203 MA's), (198, 53029), (205, 53053),

Gene: Wojtek_85 Start: 64679, Stop: 65014, Start Num: 96

Candidate Starts for Wojtek_85:

(Start: 96 @64679 has 2 MA's), (100, 64688), (105, 64697), (Start: 111 @64706 has 15 MA's), (137, 64754), (198, 64907), (205, 64931), (213, 65000),

Gene: Xenomorph_69 Start: 44753, Stop: 45061, Start Num: 123

Candidate Starts for Xenomorph_69:

(Start: 123 @44753 has 21 MA's), (163, 44855), (177, 44891), (196, 44954), (206, 44984),

Gene: Xerxes_55 Start: 36284, Stop: 36682, Start Num: 66

Candidate Starts for Xerxes_55:

(Start: 47 @36194 has 5 MA's), (56, 36230), (Start: 66 @36284 has 5 MA's), (125, 36437), (Start: 127 @36440 has 1 MA's), (143, 36467), (198, 36578), (200, 36584), (213, 36671),

Gene: Yassified_29 Start: 9570, Stop: 9920, Start Num: 89

Candidate Starts for Yassified_29:

(Start: 89 @9570 has 203 MA's), (104, 9618), (Start: 131 @9666 has 3 MA's), (149, 9711), (151, 9717), (171, 9753), (180, 9777), (211, 9888),

Gene: YemiJoy2021_33 Start: 10918, Stop: 11268, Start Num: 89

Candidate Starts for YemiJoy2021_33:

(Start: 89 @10918 has 203 MA's), (104, 10966), (Start: 131 @11014 has 3 MA's), (149, 11059), (151, 11065), (171, 11101), (180, 11125), (211, 11236),

Gene: Yorick_92 Start: 54408, Stop: 54689, Start Num: 115

Candidate Starts for Yorick_92:

(18, 53997), (20, 54018), (23, 54039), (25, 54069), (Start: 115 @54408 has 38 MA's), (137, 54453), (144, 54471), (198, 54588),

Gene: YoshiYama_74 Start: 45322, Stop: 45633, Start Num: 123

Candidate Starts for YoshiYama_74:

(Start: 123 @45322 has 21 MA's), (149, 45385), (177, 45463), (183, 45484), (191, 45508), (196, 45526), (206, 45556),

Gene: YoungMoneyMata_32 Start: 10124, Stop: 10474, Start Num: 89

Candidate Starts for YoungMoneyMata_32:

(Start: 89 @10124 has 203 MA's), (104, 10172), (Start: 131 @10220 has 3 MA's), (149, 10265), (151, 10271), (171, 10307), (180, 10331), (211, 10442),

Gene: Yucca_32 Start: 10840, Stop: 11190, Start Num: 89

Candidate Starts for Yucca_32:

(Start: 89 @10840 has 203 MA's), (104, 10888), (Start: 131 @10936 has 3 MA's), (149, 10981), (151, 10987), (171, 11023), (180, 11047), (211, 11158),

Gene: YungMoney_79 Start: 54400, Stop: 54783, Start Num: 89

Candidate Starts for YungMoney_79:

(Start: 89 @54400 has 203 MA's), (145, 54496), (202, 54604), (213, 54682),

Gene: Yvonnetastic_136 Start: 75890, Stop: 76258, Start Num: 94

Candidate Starts for Yvonnetastic_136:

(Start: 94 @75890 has 21 MA's), (110, 75920), (119, 75935), (122, 75941), (133, 75965), (153, 76016), (197, 76136), (198, 76139), (205, 76163), (216, 76244),

Gene: Zalkecks_34 Start: 10922, Stop: 11272, Start Num: 89

Candidate Starts for Zalkecks_34:

(Start: 89 @10922 has 203 MA's), (104, 10970), (Start: 131 @11018 has 3 MA's), (149, 11063), (151, 11069), (171, 11105), (180, 11129), (211, 11240),

Gene: Zeenon_34 Start: 10904, Stop: 11254, Start Num: 89

Candidate Starts for Zeenon_34:

(Start: 89 @10904 has 203 MA's), (104, 10952), (Start: 131 @11000 has 3 MA's), (149, 11045), (151, 11051), (171, 11087), (180, 11111), (211, 11222),

Gene: Zizzle_99 Start: 55058, Stop: 55339, Start Num: 115

Candidate Starts for Zizzle_99:

(18, 54647), (20, 54668), (23, 54689), (25, 54719), (Start: 115 @55058 has 38 MA's), (137, 55103), (144, 55121), (198, 55238), (207, 55274),

Gene: ZygoTaiga_32 Start: 10918, Stop: 11268, Start Num: 89

Candidate Starts for ZygoTaiga_32:

(Start: 89 @10918 has 203 MA's), (104, 10966), (Start: 131 @11014 has 3 MA's), (149, 11059), (151, 11065), (171, 11101), (180, 11125), (211, 11236),