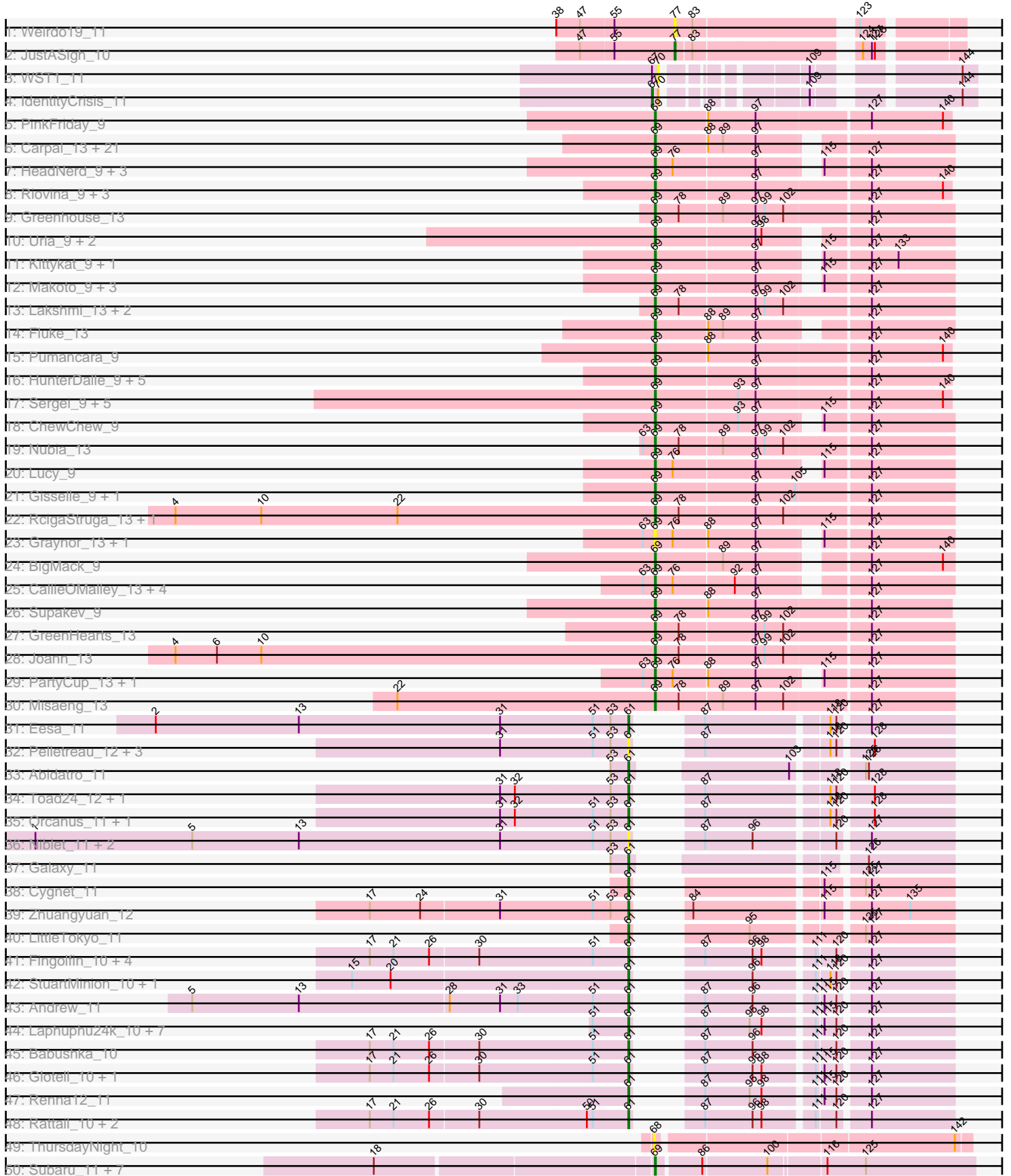
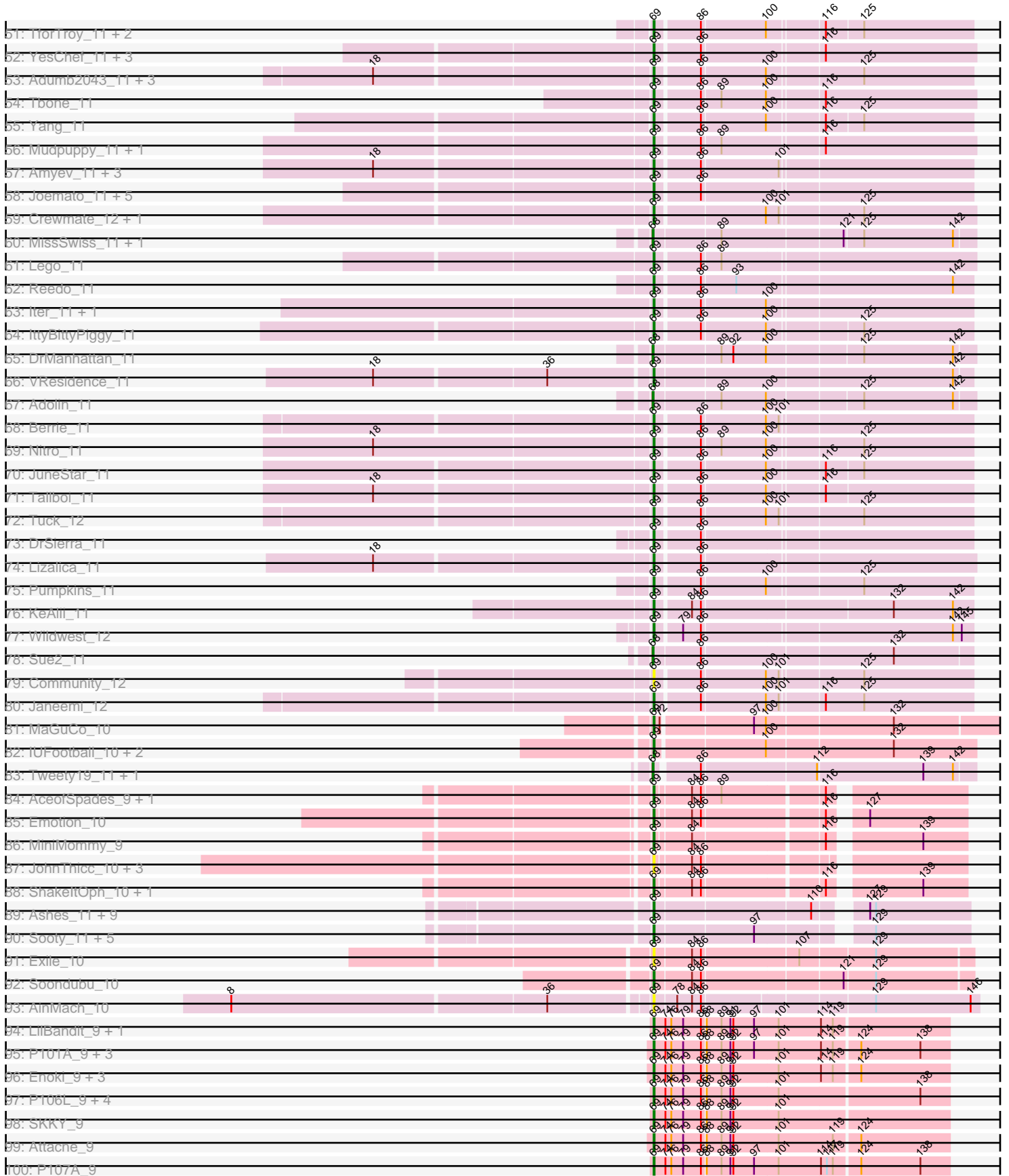


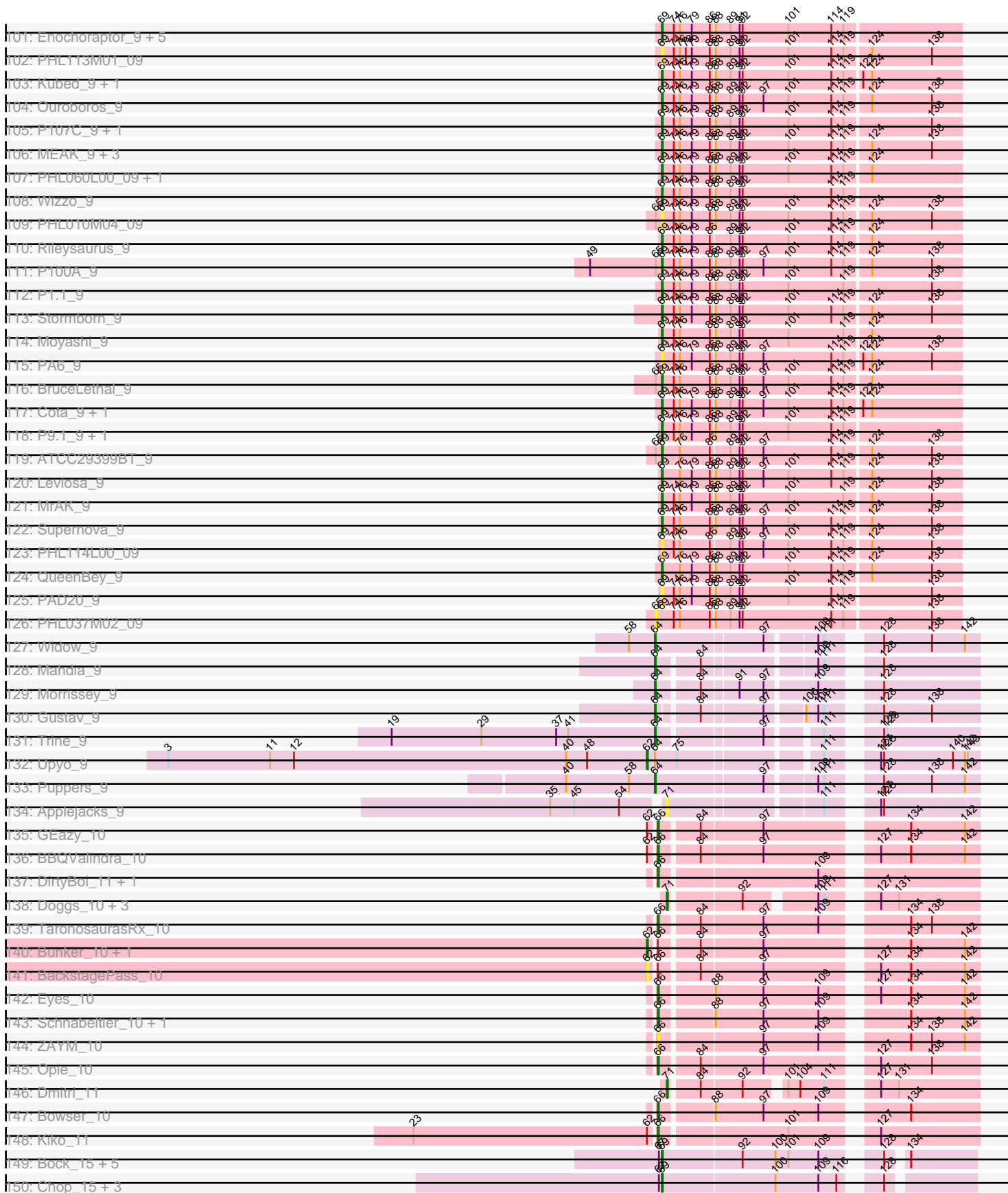
Pham 294342



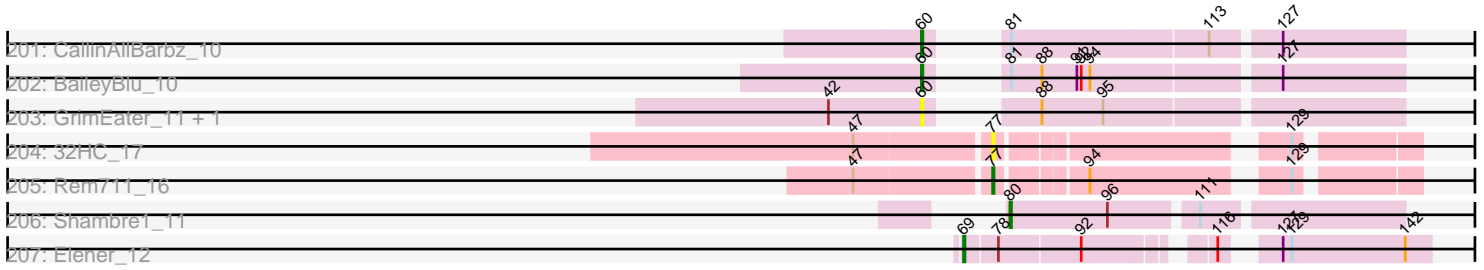
Pham 294342



Pham 294342



Pham 294342



Note: Tracks are now grouped by subcluster and scaled. Switching in subcluster is indicated by changes in track color. Track scale is now set by default to display the region 30 bp upstream of start 1 to 30 bp downstream of the last possible start. If this default region is judged to be packed too tightly with annotated starts, the track will be further scaled to only show that region of the ORF with annotated starts. This action will be indicated by adding "Zoomed" to the title. For starts, yellow indicates the location of called starts comprised solely of Glimmer/GeneMark auto-annotations, green indicates the location of called starts with at least 1 manual gene annotation.

Pham 294342 Report

This analysis was run 04/18/26 on database version 643.

Pham number 294342 has 410 members, 71 are drafts.

Phages represented in each track:

- Track 1 : Weirdo19_11
- Track 2 : JustASigh_10
- Track 3 : WST1_11
- Track 4 : IdentityCrisis_11
- Track 5 : PinkFriday_9
- Track 6 : Carpal_13, Cholula_13, Korra_13, Glenn_13, Kalizoi_13, Dino_13, Vallejo_13, Wawa_13, TattModd_13, BrotherBLo_13, Zorro_13, RAP15_13, Jumboset_13, Rozby_13, MrGloopy_13, Riverdale_13, MeganNoll_13, Scuttle_13, Potatoes_13, Savage2526_13, Immaculata_13, Beethoven_13
- Track 7 : HeadNerd_9, Moki_9, Huckleberry_9, Bennie_9
- Track 8 : Riovina_9, Eunoia_9, Aledel_9, OMalley_9
- Track 9 : Greenhouse_13
- Track 10 : Urla_9, EstebanJulior_9, MamaPearl_9
- Track 11 : Kittykat_9, Preamble_9
- Track 12 : Makoto_9, Pterodactyl_9, Lennox_9, PitaDog_9
- Track 13 : Lakshmi_13, Oxynfrius_13, Albanese_13
- Track 14 : Fluke_13
- Track 15 : Pumancara_9
- Track 16 : HunterDalle_9, AustinPowers_9, DrRobert_9, Vulture_9, WonderBoy_9, Chridison_9
- Track 17 : Sergei_9, Temper16_9, Daiboju_9, Maria1952_9, KingBob_9, Herb_9
- Track 18 : ChewChew_9
- Track 19 : Nubia_13
- Track 20 : Lucy_9
- Track 21 : Gisselle_9, DreamTeam_9
- Track 22 : RcigaStruga_13, Huntingdon_13
- Track 23 : Graynor_13, MrBoss_13
- Track 24 : BigMack_9
- Track 25 : CallieOMalley_13, AppleCider_13, Wayne_13, Suppi_13, Canowicakte_13
- Track 26 : Supakev_9
- Track 27 : GreenHearts_13
- Track 28 : Joann_13
- Track 29 : PartyCup_13, Litotes_13
- Track 30 : Misaeng_13
- Track 31 : Eesa_11
- Track 32 : Pelletreau_12, Shen_12, Amanises_12, Gravel_12

- Track 33 : Abidatro_11
- Track 34 : Toad24_12, KendraB23_12
- Track 35 : Orcanus_11, Westrich_12
- Track 36 : Niblet_11, Chicken_11, Zixiang_11
- Track 37 : Galaxy_11
- Track 38 : Cygnet_11
- Track 39 : Zhuangyuan_12
- Track 40 : LittleTokyo_11
- Track 41 : Fingolfin_10, Juno112_10, Oppalora_10, Atlantica_10, AmiCi24_10
- Track 42 : StuartMinion_10, AlexMinion_10
- Track 43 : Andrew_11
- Track 44 : Laphuphu24k_10, RedFox_10, PhluffyCoco_10, DanHam62_10, HamCheese_10, Amphitrite_10, AdoptaAdorbs_10, Camara_10
- Track 45 : Babushka_10
- Track 46 : Glotell_10, KHumphrey_10
- Track 47 : Renna12_11
- Track 48 : Rattail_10, Azaz_10, Leona_10
- Track 49 : ThursdayNight_10
- Track 50 : Subaru_11, Elezi_11, Jstan_11, London_11, Niobe_11, Eraser_11, Skelbel_11, Asa16_11
- Track 51 : TforTroy_11, Schaffner_11, Cassia_11
- Track 52 : YesChef_11, Powerpuff_11, Tutumahutu_11, AGrandiflora_11
- Track 53 : Adumb2043_11, Turab_11, Amploria_11, AEgle_11
- Track 54 : Tbone_11
- Track 55 : Yang_11
- Track 56 : Mudpuppy_11, Warda_11
- Track 57 : Amyev_11, Pixelle_11, Tian_11, Phives_12
- Track 58 : Joemato_11, JohnDoe_11, Simpson_12, Cyan_11, Kaylissa_11, Flutur_11
- Track 59 : Crewmate_12, ObiToo_11
- Track 60 : MissSwiss_11, PandaPo_11
- Track 61 : Lego_11
- Track 62 : Reedo_11
- Track 63 : lter_11, Ascela_11
- Track 64 : IttyBittyPiggy_11
- Track 65 : DrManhattan_11
- Track 66 : VResidence_11
- Track 67 : Adolin_11
- Track 68 : Berrie_11
- Track 69 : Nitro_11
- Track 70 : JuneStar_11
- Track 71 : Tallboi_11
- Track 72 : Tuck_12
- Track 73 : DrSierra_11
- Track 74 : Lizalica_11
- Track 75 : Pumpkins_11
- Track 76 : KeAlii_11
- Track 77 : Wildwest_12
- Track 78 : Sue2_11
- Track 79 : Community_12
- Track 80 : Janeemi_12
- Track 81 : MaGuCo_10
- Track 82 : IUFootball_10, Liebe_10, Maureen_10

- Track 83 : Tweety19_11, Snek_11
- Track 84 : AceofSpades_9, VroomVroom_10
- Track 85 : Emotion_10
- Track 86 : MiniMommy_9
- Track 87 : JohnThicc_10, FiveHead_10, Origami_10, LadyAstra_10
- Track 88 : ShakeltOph_10, JasmineDragon_10
- Track 89 : Ashes_11, Mysterium_11, SpecialK_11, Halsey_11, Gumpizza_11, RockScotty_11, Beaupre_11, Stuu_11, Giorgio_11, Moss_11
- Track 90 : Sooty_11, Gambol_11, Cappuccino_11, Kalimba_11, Donkey_11, Sabourin_11
- Track 91 : Exile_10
- Track 92 : Soondubu_10
- Track 93 : AinMach_10
- Track 94 : LilBandit_9, P104B_9
- Track 95 : P101A_9, DrParker_9, P100.1_9, P105_9
- Track 96 : Enoki_9, PAS50_9, P100D_9, PHL067M10_09
- Track 97 : P106L_9, P106I_9, P106C_9, P106M_9, P106A_9
- Track 98 : SKKY_9
- Track 99 : Attacne_9
- Track 100 : P107A_9
- Track 101 : Enochoraptor_9, PHL071N05_09, Pirate_9, P14.4_9, P108C_9, Aquarius_9
- Track 102 : PHL113M01_09
- Track 103 : Kubed_9, PHL112N00_09
- Track 104 : Ouroboros_9
- Track 105 : P107C_9, ATCC29399BC_9
- Track 106 : MEAK_9, Procrass1_9, Solid_9, P104A_9
- Track 107 : PHL060L00_09, Lauchelly_9
- Track 108 : Wizzo_9
- Track 109 : PHL010M04_09
- Track 110 : Rileysaurus_9
- Track 111 : P100A_9
- Track 112 : P1.1_9
- Track 113 : Stormborn_9
- Track 114 : Moyashi_9
- Track 115 : PA6_9
- Track 116 : BruceLethal_9
- Track 117 : Cota_9, Keiki_9
- Track 118 : P9.1_9, PHL111M01_09
- Track 119 : ATCC29399BT_9
- Track 120 : Leviosa_9
- Track 121 : MrAK_9
- Track 122 : Supernova_9
- Track 123 : PHL114L00_09
- Track 124 : QueenBey_9
- Track 125 : PAD20_9
- Track 126 : PHL037M02_09
- Track 127 : Widow_9
- Track 128 : Mahdia_9
- Track 129 : Morrissey_9
- Track 130 : Gustav_9
- Track 131 : Trine_9
- Track 132 : Upyo_9

- Track 133 : Puppies_9
- Track 134 : Applejacks_9
- Track 135 : GEazy_10
- Track 136 : BBQValindra_10
- Track 137 : DirtyBoi_11, Hedwig_11
- Track 138 : Doggs_10, Coriander_11, RayTheFireFly_11, Moonflower_11
- Track 139 : TaronosaurusRx_10
- Track 140 : Bunker_10, HannahD_10
- Track 141 : BackstagePass_10
- Track 142 : Eyes_10
- Track 143 : Schnabeltier_10, MagicMan_10
- Track 144 : ZAYM_10
- Track 145 : Opie_10
- Track 146 : Dmitri_11
- Track 147 : Bowser_10
- Track 148 : Kiko_11
- Track 149 : Bock_15, Parada_15, Brylie_15, NancyRae_15, Mulch_15, Nadeem_15
- Track 150 : Chop_15, GrandSlam_15, Ayotoya_15, Hamood_15
- Track 151 : Francois_15
- Track 152 : WheatThin_15
- Track 153 : BetterKatz_15, Pimento_16
- Track 154 : DelRio_16
- Track 155 : Ruthy_12
- Track 156 : DumpsterDude_12
- Track 157 : Zodiariah_11
- Track 158 : MakCheese_13
- Track 159 : Sprinklemunch_11
- Track 160 : ArchiDore_12
- Track 161 : Malibo_10
- Track 162 : Heinz_10
- Track 163 : Reyja_11
- Track 164 : Hibiscus_10, Jojo24_10
- Track 165 : DonkeyMan_10, Tarzan_10
- Track 166 : Santhid_10
- Track 167 : Swervy_10, Slay_10, SarBear_10, AylexOG_11, Finalfrontier_11
- Track 168 : BAjuniper_10
- Track 169 : Bernstein_9, Coltrane_9, Skylord_9, Rollins_9, Clayda5_9, Vitas_9, Brahms_9, Armstrong_9
- Track 170 : Doobus_10
- Track 171 : TukTuk_10, CupcakePrincess_10, Jabb_10, MsUbiquitous_10
- Track 172 : BelmontSKP_11, AnnaLie_11
- Track 173 : Solea_11, Milomuff_11
- Track 174 : Eden_9
- Track 175 : CanFranMach_10
- Track 176 : Lilo27_10
- Track 177 : Akino08_10
- Track 178 : Quenya_11
- Track 179 : PhigPhack_10, CroZenni_10, SansAfet_10, DickRichards_10
- Track 180 : Johnathan_10, Bengal_10, Avocadoman_10, Albright_10, Abigail_10, Burritobowl_10
- Track 181 : Katzastrophic_10
- Track 182 : Cashington_10
- Track 183 : FlameThrower_10, Celaena_10, Bachaco_10

- Track 184 : Franklin22_9
- Track 185 : Softsoap_10
- Track 186 : Nicky22_11
- Track 187 : Loviatar_10
- Track 188 : Gack_9
- Track 189 : Caron_9
- Track 190 : Barnstormer_9, UtzChips_9
- Track 191 : Zeta1847_9
- Track 192 : GardenState_10
- Track 193 : Gretchen_10, SuperHands_11, Nancia_9, Bodacious_9, Lasagna_9, Christian_9, CristinaYang_9, Forester_18, Percival_10, OurGirlNessie_9, LilStuart_9
- Track 194 : Cen1621_9
- Track 195 : Floof_10
- Track 196 : IAmGroot_10
- Track 197 : SuMoo_9
- Track 198 : Honk_9
- Track 199 : Mabodamaca_10
- Track 200 : Gibbzilla_12
- Track 201 : CallinAllBarbz_10
- Track 202 : BaileyBlu_10
- Track 203 : GrimEater_11, Jankie_12
- Track 204 : 32HC_17
- Track 205 : Rem711_16
- Track 206 : Shambre1_11
- Track 207 : Elener_12

Summary of Final Annotations (See graph section above for start numbers):

The start number called the most often in the published annotations is 69, it was called in 227 of the 339 non-draft genes in the pham.

Genes that call this "Most Annotated" start:

- AEgle_11, AGrandiflora_11, ATCC29399BC_9, ATCC29399BT_9, AceofSpades_9, Adumb2043_11, AinMach_10, Albanese_13, Aledel_9, Amploria_11, Amyev_11, AppleCider_13, Aquarius_9, ArchiDore_12, Asa16_11, Ascela_11, Ashes_11, Attacne_9, AustinPowers_9, Ayotoya_15, Barnstormer_9, Beaupre_11, Beethoven_13, Bennie_9, Berrie_11, BetterKatz_15, BigMack_9, Bock_15, Bodacious_9, BrotherBLo_13, BruceLethal_9, Brylie_15, CallieOMalley_13, Canowicakte_13, Cappuccino_11, Caron_9, Carpal_13, Cassia_11, Cen1621_9, ChewChew_9, Cholula_13, Chop_15, Chridison_9, Christian_9, Community_12, Cota_9, Crewmate_12, CristinaYang_9, Cyan_11, Daiboju_9, DelRio_16, Dino_13, Donkey_11, DrParker_9, DrRobert_9, DrSierra_11, DreamTeam_9, DumpsterDude_12, Elener_12, Elezi_11, Emotion_10, Enochoraptor_9, Enoki_9, Eraser_11, EstebanJulior_9, Eunoia_9, Exile_10, FiveHead_10, Floof_10, Fluke_13, Flutur_11, Forester_18, Gambol_11, GardenState_10, Giorgio_11, Gisselle_9, Glenn_13, GrandSlam_15, Graynor_13, GreenHearts_13, Greenhouse_13, Gretchen_10, Gumpizza_11, Halsey_11, Hamood_15, HeadNerd_9, Herb_9, Honk_9, Huckleberry_9, HunterDalle_9, Huntingdon_13, IAmGroot_10, IUFootball_10, Immaculata_13, Iter_11, IttyBittyPiggy_11, Janeemi_12, JasmineDragon_10, Joann_13, Joemato_11, JohnDoe_11, JohnThicc_10, Jstan_11,

Jumboset_13, JuneStar_11, Kalimba_11, Kalizoi_13, Kaylissa_11, KeAlii_11, Keiki_9, KingBob_9, Kittykat_9, Korra_13, Kubed_9, LadyAstra_10, Lakshmi_13, Lasagna_9, Lauchelly_9, Lego_11, Lennox_9, Leviosa_9, Liebe_10, LilBandit_9, LilStuart_9, Litotes_13, Lizalica_11, London_11, Lucy_9, MEAK_9, MaGuCo_10, Mabodamaca_10, MakCheese_13, Makoto_9, MamaPearl_9, Maria1952_9, Maureen_10, MeganNoll_13, MiniMommy_9, Misaeng_13, Moki_9, Moss_11, Moyashi_9, MrAK_9, MrBoss_13, MrGloopy_13, Mudpuppy_11, Mulch_15, Mysterium_11, Nadeem_15, Nancia_9, NancyRae_15, Niobe_11, Nitro_11, Nubia_13, OMalley_9, ObiToo_11, Origami_10, OurGirlNessie_9, Ouroboros_9, Oxyntrius_13, P1.1_9, P100.1_9, P100A_9, P100D_9, P101A_9, P104A_9, P104B_9, P105_9, P106A_9, P106C_9, P106I_9, P106L_9, P106M_9, P107A_9, P107C_9, P108C_9, P14.4_9, P9.1_9, PA6_9, PAD20_9, PAS50_9, PHL010M04_09, PHL060L00_09, PHL067M10_09, PHL071N05_09, PHL111M01_09, PHL112N00_09, PHL113M01_09, PHL114L00_09, Parada_15, PartyCup_13, Percival_10, Phives_12, Pimento_16, PinkFriday_9, Pirate_9, PitaDog_9, Pixelle_11, Potatoes_13, Powerpuff_11, Preamble_9, Procrass1_9, Pterodactyl_9, Pumancara_9, Pumpkins_11, QueenBey_9, RAP15_13, RcigaStruga_13, Reedo_11, Rileysaurus_9, Riovina_9, Riverdale_13, RockScotty_11, Rozby_13, Ruthy_12, SKKY_9, Sabourin_11, Savage2526_13, Schaffner_11, Scuttle_13, Sergei_9, ShakelToph_10, Simpson_12, Skelbel_11, Solid_9, Soondubu_10, Sooty_11, SpecialK_11, Sprinklemunch_11, Stormborn_9, Stuu_11, SuMoo_9, Subaru_11, Supakev_9, SuperHands_11, Supernova_9, Suppi_13, Tallboi_11, TattModd_13, Tbone_11, Temper16_9, TforTroy_11, Tian_11, Tuck_12, Turab_11, Tutumahutu_11, Urla_9, UtzChips_9, VResidence_11, Vallejo_13, VroomVroom_10, Vulture_9, Warda_11, Wawa_13, Wayne_13, Wildwest_12, Wizzo_9, WonderBoy_9, Yang_11, YesChef_11, Zeta1847_9, Zodiariah_11, Zorro_13,

Genes that have the "Most Annotated" start but do not call it:

- Francois_15, PHL037M02_09, WheatThin_15,

Genes that do not have the "Most Annotated" start:

- 32HC_17, Abidatro_11, Abigail_10, Adolin_11, AdoptaAdorbs_10, Akino08_10, Albright_10, AlexMinion_10, Amanises_12, AmiCi24_10, Amphitrite_10, Andrew_11, AnnaLie_11, Applejacks_9, Armstrong_9, Atlantica_10, Avocadoman_10, AylexOG_11, Azaz_10, BAjuniper_10, BBQValindra_10, Babushka_10, Bachaco_10, BackstagePass_10, BaileyBlu_10, BelmontSKP_11, Bengal_10, Bernstein_9, Bowser_10, Brahms_9, Bunker_10, Burritobowl_10, CallinAllBarbz_10, Camara_10, CanFranMach_10, Cashington_10, Celaena_10, Chicken_11, Clayda5_9, Coltrane_9, Coriander_11, CroZenni_10, CupcakePrincess_10, Cygnet_11, DanHam62_10, DickRichards_10, DirtyBoi_11, Dmitri_11, Doggs_10, DonkeyMan_10, Doobus_10, DrManhattan_11, Eden_9, Eesa_11, Eyes_10, Finalfrontier_11, Fingolfin_10, FlameThrower_10, Franklin22_9, GEazy_10, Gack_9, Galaxy_11, Gibbzilla_12, Glotell_10, Gravel_12, GrimEater_11, Gustav_9, HamCheese_10, HannahD_10, Hedwig_11, Heinz_10, Hibiscus_10, IdentityCrisis_11, Jabb_10, Jankie_12, Johnathan_10, Jojo24_10, Juno112_10, JustASigh_10, KHumphrey_10, Katzastrophic_10, KendraB23_12, Kiko_11, Laphuphu24k_10, Leona_10, Lilo27_10, LittleTokyo_11, Loviatar_10, MagicMan_10, Mahdia_9, Malibo_10, Milomuff_11, MissSwiss_11, Moonflower_11, Morrissey_9, MsUbiquitous_10, Niblet_11, Nicky22_11, Opie_10, Oppalora_10, Orcanus_11, PandaPo_11, Pelletreau_12, PhigPhack_10, PhluffyCoco_10, Puppies_9, Quenya_11, Rattail_10, RayTheFireFly_11, RedFox_10, Rem711_16, Renna12_11, Reyja_11, Rollins_9, SansAfet_10, Santhid_10, SarBear_10, Schnabeltier_10,

Shambre1_11, Shen_12, Skylord_9, Slay_10, Snek_11, Softsoap_10, Solea_11, StuartMinion_10, Sue2_11, Swervy_10, TaronosaurusRx_10, Tarzan_10, ThursdayNight_10, Toad24_12, Trine_9, TukTuk_10, Tweety19_11, Upyo_9, Vitas_9, WST1_11, Weirdo19_11, Westrich_12, Widow_9, ZAYM_10, Zhuangyuan_12, Zixiang_11,

Summary by start number:

Start 39:

- Found in 2 of 410 (0.5%) of genes in pham
- Manual Annotations of this start: 1 of 339
- Called 50.0% of time when present
- Phage (with cluster) where this start called: Loviatar_10 (EB),

Start 46:

- Found in 2 of 410 (0.5%) of genes in pham
- Manual Annotations of this start: 1 of 339
- Called 50.0% of time when present
- Phage (with cluster) where this start called: Akino08_10 (EB),

Start 56:

- Found in 6 of 410 (1.5%) of genes in pham
- Manual Annotations of this start: 5 of 339
- Called 100.0% of time when present
- Phage (with cluster) where this start called: AylexOG_11 (EB), BAjuniper_10 (EB), Finalfrontier_11 (EB), SarBear_10 (EB), Slay_10 (EB), Swervy_10 (EB),

Start 57:

- Found in 39 of 410 (9.5%) of genes in pham
- Manual Annotations of this start: 37 of 339
- Called 100.0% of time when present
- Phage (with cluster) where this start called: Abigail_10 (EB), Albright_10 (EB), AnnaLie_11 (EB), Armstrong_9 (EB), Avocadoman_10 (EB), Bachaco_10 (EB), BelmontSKP_11 (EB), Bengal_10 (EB), Bernstein_9 (EB), Brahms_9 (EB), Burritobowl_10 (EB), Cashington_10 (EB), Celaena_10 (EB), Clayda5_9 (EB), Coltrane_9 (EB), CroZenni_10 (EB), CupcakePrincess_10 (EB), DickRichards_10 (EB), Doobus_10 (EB), Eden_9 (EB), FlameThrower_10 (EB), Franklin22_9 (EB), Gack_9 (EB), Jabb_10 (EB), Johnathan_10 (EB), Katzastrophic_10 (EB), Lilo27_10 (EB), Milomuff_11 (EB), MsUbiquitous_10 (EB), Nicky22_11 (EB), PhigPhack_10 (EB), Quenya_11 (EB), Rollins_9 (EB), SansAfet_10 (EB), Skylord_9 (EB), Softsoap_10 (EB), Solea_11 (EB), TukTuk_10 (EB), Vitas_9 (EB),

Start 59:

- Found in 1 of 410 (0.2%) of genes in pham
- No Manual Annotations of this start.
- Called 100.0% of time when present
- Phage (with cluster) where this start called: CanFranMach_10 (EB),

Start 60:

- Found in 4 of 410 (1.0%) of genes in pham
- Manual Annotations of this start: 2 of 339
- Called 100.0% of time when present

- Phage (with cluster) where this start called: BaileyBlu_10 (FP), CallinAllBarbz_10 (FP), GrimEater_11 (FP), Jankie_12 (FP),

Start 61:

- Found in 40 of 410 (9.8%) of genes in pham
- Manual Annotations of this start: 22 of 339
- Called 100.0% of time when present
- Phage (with cluster) where this start called: Abidatro_11 (AS1), AdoptaAdorbs_10 (AS3), AlexMinion_10 (AS3), Amanises_12 (AS1), AmCi24_10 (AS3), Amphitrite_10 (AS3), Andrew_11 (AS3), Atlantica_10 (AS3), Azaz_10 (AS3), Babushka_10 (AS3), Camara_10 (AS3), Chicken_11 (AS1), Cygnet_11 (AS2), DanHam62_10 (AS3), Eesa_11 (AS1), Fingolfin_10 (AS3), Galaxy_11 (AS1), Glotell_10 (AS3), Gravel_12 (AS1), HamCheese_10 (AS3), Juno112_10 (AS3), KHumphrey_10 (AS3), KendraB23_12 (AS1), Laphuphu24k_10 (AS3), Leona_10 (AS3), LittleTokyo_11 (AS2), Niblet_11 (AS1), Oppalora_10 (AS3), Orcanus_11 (AS1), Pelletreau_12 (AS1), PhluffyCoco_10 (AS3), Rattail_10 (AS3), RedFox_10 (AS3), Renna12_11 (AS3), Shen_12 (AS1), StuartMinion_10 (AS3), Toad24_12 (AS1), Westrich_12 (AS1), Zhuangyuan_12 (AS2), Zixiang_11 (AS1),

Start 62:

- Found in 7 of 410 (1.7%) of genes in pham
- Manual Annotations of this start: 3 of 339
- Called 57.1% of time when present
- Phage (with cluster) where this start called: BackstagePass_10 (DB), Bunker_10 (DB), HannahD_10 (DB), Upyo_9 (CD),

Start 63:

- Found in 17 of 410 (4.1%) of genes in pham
- Manual Annotations of this start: 7 of 339
- Called 41.2% of time when present
- Phage (with cluster) where this start called: DonkeyMan_10 (DY), Heinz_10 (DY), Hibiscus_10 (DY), Jojo24_10 (DY), Reyja_11 (DY), Santhid_10 (DY), Tarzan_10 (DY),

Start 64:

- Found in 7 of 410 (1.7%) of genes in pham
- Manual Annotations of this start: 6 of 339
- Called 85.7% of time when present
- Phage (with cluster) where this start called: Gustav_9 (CD), Mahdia_9 (CD), Morrissey_9 (CD), Puppies_9 (CD), Trine_9 (CD), Widow_9 (CD),

Start 65:

- Found in 5 of 410 (1.2%) of genes in pham
- No Manual Annotations of this start.
- Called 20.0% of time when present
- Phage (with cluster) where this start called: PHL037M02_09 (BU),

Start 66:

- Found in 15 of 410 (3.7%) of genes in pham
- Manual Annotations of this start: 11 of 339
- Called 80.0% of time when present
- Phage (with cluster) where this start called: BBQValindra_10 (DB), Bowser_10 (DB), DirtyBoi_11 (DB), Eyes_10 (DB), GEazy_10 (DB), Hedwig_11 (DB), Kiko_11 (DB),

MagicMan_10 (DB), Opie_10 (DB), Schnabeltier_10 (DB), TaronosaurusRx_10 (DB), ZAYM_10 (DB),

Start 67:

- Found in 17 of 410 (4.1%) of genes in pham
- Manual Annotations of this start: 3 of 339
- Called 17.6% of time when present
- Phage (with cluster) where this start called: Francois_15 (DI), IdentityCrisis_11 (AJ), WheatThin_15 (DI),

Start 68:

- Found in 8 of 410 (2.0%) of genes in pham
- Manual Annotations of this start: 6 of 339
- Called 100.0% of time when present
- Phage (with cluster) where this start called: Adolin_11 (AZ1), DrManhattan_11 (AZ1), MissSwiss_11 (AZ1), PandaPo_11 (AZ1), Sneek_11 (AZ3), Sue2_11 (AZ1), ThursdayNight_10 (AZ), Tweety19_11 (AZ3),

Start 69:

- Found in 266 of 410 (64.9%) of genes in pham
- Manual Annotations of this start: 227 of 339
- Called 98.9% of time when present
- Phage (with cluster) where this start called: AEgle_11 (AZ1), AGrandiflora_11 (AZ1), ATCC29399BC_9 (BU), ATCC29399BT_9 (BU), AceofSpades_9 (AZ4), Adumb2043_11 (AZ1), AinMach_10 (AZ7), Albanese_13 (AK), Aledel_9 (AK), Amploria_11 (AZ1), Amyev_11 (AZ1), AppleCider_13 (AK), Aquarius_9 (BU), ArchiDore_12 (DW), Asa16_11 (AZ1), Ascela_11 (AZ1), Ashes_11 (AZ5), Attacne_9 (BU), AustinPowers_9 (AK), Ayotoya_15 (DI), Barnstormer_9 (EH), Beaupre_11 (AZ5), Beethoven_13 (AK), Bennie_9 (AK), Berrie_11 (AZ1), BetterKatz_15 (DI), BigMack_9 (AK), Bock_15 (DI), Bodacious_9 (AK), BrotherBLo_13 (AK), BruceLethal_9 (BU), Brylie_15 (DI), CallieOMalley_13 (AK), Canowicakte_13 (AK), Cappuccino_11 (AZ5), Caron_9 (EH), Carpal_13 (AK), Cassia_11 (AZ1), Cen1621_9 (EH), ChewChew_9 (AK), Cholula_13 (AK), Chop_15 (DI), Chridison_9 (AK), Christian_9 (AK), Community_12 (AZ1), Cota_9 (BU), Crewmate_12 (AZ1), CristinaYang_9 (AK), Cyan_11 (AZ1), Daiboju_9 (AK), DelRio_16 (DI), Dino_13 (AK), Donkey_11 (AZ5), DrParker_9 (BU), DrRobert_9 (AK), DrSierra_11 (AZ1), DreamTeam_9 (AK), DumpsterDude_12 (DW), Elener_12 (singleton), Elezi_11 (AZ1), Emotion_10 (AZ4), Enochoraptor_9 (BU), Enoki_9 (BU), Eraser_11 (AZ1), EstebanJulior_9 (AK), Eunoia_9 (AK), Exile_10 (AZ6), FiveHead_10 (AZ4), Floop_10 (EH), Fluke_13 (AK), Flutur_11 (AZ), Forester_18 (EH), Gambol_11 (AZ5), GardenState_10 (EH), Giorgio_11 (AZ5), Gisselle_9 (AK), Glenn_13 (AK), GrandSlam_15 (DI), Graynor_13 (AK), GreenHearts_13 (AK), Greenhouse_13 (AK), Gretchen_10 (EH), Gumpizza_11 (AZ5), Halsey_11 (AZ5), Hamood_15 (DI), HeadNerd_9 (AK), Herb_9 (AK), Honk_9 (EH), Huckleberry_9 (AK), HunterDalle_9 (AK), Huntingdon_13 (AK), IAmGroot_10 (EH), IUFootball_10 (AZ2), Immaculata_13 (AK), Iter_11 (AZ1), IttyBittyPiggy_11 (AZ1), Janeemi_12 (AZ1), JasmineDragon_10 (AZ4), Joann_13 (AK), Joemato_11 (AZ1), JohnDoe_11 (AZ1), JohnThicc_10 (AZ4), Jstan_11 (AZ1), Jumboset_13 (AK), JuneStar_11 (AZ1), Kalimba_11 (AZ5), Kalizoi_13 (AK), Kaylissa_11 (AZ1), KeAlii_11 (AZ1), Keiki_9 (BU), KingBob_9 (AK), Kittykat_9 (AK), Korra_13 (AK), Kubed_9 (BU), LadyAstra_10 (AZ4), Lakshmi_13 (AK), Lasagna_9 (AK), Lauchelly_9 (BU), Lego_11 (AZ1), Lennox_9 (AK), Leviosa_9 (BU), Liebe_10 (AZ2), LilBandit_9 (BU), LilStuart_9 (AK), Litotes_13 (AK), Lizalica_11 (AZ1), London_11 (AZ1), Lucy_9 (AK), MEAK_9 (BU), MaGuCo_10 (AZ2),

Mabodamaca_10 (EH), MakCheese_13 (DW), Makoto_9 (AK), MamaPearl_9 (AK), Maria1952_9 (AK), Maureen_10 (AZ2), MeganNoll_13 (AK), MiniMommy_9 (AZ4), Misaeng_13 (AK), Moki_9 (AK), Moss_11 (AZ5), Moyashi_9 (BU), MrAK_9 (BU), MrBoss_13 (AK), MrGloopy_13 (AK), Mudpuppy_11 (AZ1), Mulch_15 (DI), Mysterium_11 (AZ5), Nadeem_15 (DI), Nancia_9 (AK), NancyRae_15 (DI), Niobe_11 (AZ1), Nitro_11 (AZ1), Nubia_13 (AK), OMalley_9 (AK), ObiToo_11 (AZ1), Origami_10 (AZ4), OurGirlNessie_9 (AK), Ouroboros_9 (BU), Oxynfrius_13 (AK), P1.1_9 (BU), P100.1_9 (BU), P100A_9 (BU), P100D_9 (BU), P101A_9 (BU), P104A_9 (BU), P104B_9 (BU), P105_9 (BU), P106A_9 (BU), P106C_9 (BU), P106L_9 (BU), P106M_9 (BU), P107A_9 (BU), P107C_9 (BU), P108C_9 (BU), P14.4_9 (BU), P9.1_9 (BU), PA6_9 (BU), PAD20_9 (BU), PAS50_9 (BU), PHL010M04_09 (BU), PHL060L00_09 (BU), PHL067M10_09 (BU), PHL071N05_09 (BU), PHL111M01_09 (BU), PHL112N00_09 (BU), PHL113M01_09 (BU), PHL114L00_09 (BU), Parada_15 (DI), PartyCup_13 (AK), Percival_10 (EH), Phives_12 (AZ1), Pimento_16 (DI), PinkFriday_9 (AK), Pirate_9 (BU), PitaDog_9 (AK), Pixelle_11 (AZ1), Potatoes_13 (AK), Powerpuff_11 (AZ1), Preamble_9 (AK), Procrass1_9 (BU), Pterodactyl_9 (AK), Pumancara_9 (AK), Pumpkins_11 (AZ1), QueenBey_9 (BU), RAP15_13 (AK), RcigaStruga_13 (AK), Reedo_11 (AZ1), Rileysaurus_9 (BU), Rivovina_9 (AK), Riverdale_13 (AK), RockScotty_11 (AZ5), Rozby_13 (AK), Ruthy_12 (DW), SKKY_9 (BU), Sabourin_11 (AZ5), Savage2526_13 (AK), Schaffner_11 (AZ1), Scuttle_13 (AK), Sergei_9 (AK), ShakeltOph_10 (AZ4), Simpson_12 (AZ1), Skelbel_11 (AZ1), Solid_9 (BU), Soondubu_10 (AZ6), Sooty_11 (AZ5), SpecialK_11 (AZ5), Sprinklemunch_11 (DW), Stormborn_9 (BU), Stuu_11 (AZ5), SuMoo_9 (EH), Subaru_11 (AZ1), Supakev_9 (AK), SuperHands_11 (EH), Supernova_9 (BU), Suppi_13 (AK), Tallboi_11 (AZ1), TattModd_13 (AK), Tbone_11 (AZ1), Temper16_9 (AK), TforTroy_11 (AZ1), Tian_11 (AZ1), Tuck_12 (AZ1), Turab_11 (AZ1), Tutumahutu_11 (AZ1), Urla_9 (AK), UtzChips_9 (EH), VResidence_11 (AZ1), Vallejo_13 (AK), VroomVroom_10 (AZ4), Vulture_9 (AK), Warda_11 (AZ1), Wawa_13 (AK), Wayne_13 (AK), Wildwest_12 (AZ1), Wizzo_9 (BU), WonderBoy_9 (AK), Yang_11 (AZ1), YesChef_11 (AZ1), Zeta1847_9 (EH), Zodiariah_11 (DW), Zorro_13 (AK),

Start 70:

- Found in 2 of 410 (0.5%) of genes in pham
- No Manual Annotations of this start.
- Called 50.0% of time when present
- Phage (with cluster) where this start called: WST1_11 (AJ),

Start 71:

- Found in 7 of 410 (1.7%) of genes in pham
- Manual Annotations of this start: 5 of 339
- Called 100.0% of time when present
- Phage (with cluster) where this start called: Applejacks_9 (CD), Coriander_11 (DB), Dmitri_11 (DB), Doggs_10 (DB), Malibo_10 (DW), Moonflower_11 (DB), RayTheFireFly_11 (DB),

Start 77:

- Found in 4 of 410 (1.0%) of genes in pham
- Manual Annotations of this start: 2 of 339
- Called 100.0% of time when present
- Phage (with cluster) where this start called: 32HC_17 (Z), JustASigh_10 (AH), Rem711_16 (Z), Weirdo19_11 (AH),

Start 80:

- Found in 1 of 410 (0.2%) of genes in pham
- Manual Annotations of this start: 1 of 339
- Called 100.0% of time when present
- Phage (with cluster) where this start called: Shambre1_11 (singleton),

Start 81:

- Found in 3 of 410 (0.7%) of genes in pham
- No Manual Annotations of this start.
- Called 33.3% of time when present
- Phage (with cluster) where this start called: Gibbzilla_12 (FB),

Summary by clusters:

There are 26 clusters represented in this pham: FP, singleton, DI, DB, BU, FB, DY, DW, AZ, AS3, AS2, AS1, EH, AH, AK, AJ, EB, Z, CD, AZ1, AZ2, AZ3, AZ4, AZ5, AZ6, AZ7,

Info for manual annotations of cluster AH:

- Start number 77 was manually annotated 1 time for cluster AH.

Info for manual annotations of cluster AJ:

- Start number 67 was manually annotated 1 time for cluster AJ.

Info for manual annotations of cluster AK:

- Start number 69 was manually annotated 84 times for cluster AK.

Info for manual annotations of cluster AS1:

- Start number 61 was manually annotated 5 times for cluster AS1.

Info for manual annotations of cluster AS2:

- Start number 61 was manually annotated 3 times for cluster AS2.

Info for manual annotations of cluster AS3:

- Start number 61 was manually annotated 14 times for cluster AS3.

Info for manual annotations of cluster AZ1:

- Start number 68 was manually annotated 4 times for cluster AZ1.
- Start number 69 was manually annotated 42 times for cluster AZ1.

Info for manual annotations of cluster AZ2:

- Start number 69 was manually annotated 3 times for cluster AZ2.

Info for manual annotations of cluster AZ3:

- Start number 68 was manually annotated 2 times for cluster AZ3.

Info for manual annotations of cluster AZ4:

- Start number 69 was manually annotated 5 times for cluster AZ4.

Info for manual annotations of cluster AZ5:

- Start number 69 was manually annotated 16 times for cluster AZ5.

Info for manual annotations of cluster AZ6:

- Start number 69 was manually annotated 1 time for cluster AZ6.

Info for manual annotations of cluster BU:

- Start number 69 was manually annotated 45 times for cluster BU.

Info for manual annotations of cluster CD:

- Start number 62 was manually annotated 1 time for cluster CD.
- Start number 64 was manually annotated 6 times for cluster CD.

Info for manual annotations of cluster DB:

- Start number 62 was manually annotated 2 times for cluster DB.
- Start number 66 was manually annotated 11 times for cluster DB.
- Start number 71 was manually annotated 4 times for cluster DB.

Info for manual annotations of cluster DI:

- Start number 67 was manually annotated 2 times for cluster DI.
- Start number 69 was manually annotated 13 times for cluster DI.

Info for manual annotations of cluster DW:

- Start number 69 was manually annotated 4 times for cluster DW.
- Start number 71 was manually annotated 1 time for cluster DW.

Info for manual annotations of cluster DY:

- Start number 63 was manually annotated 7 times for cluster DY.

Info for manual annotations of cluster EB:

- Start number 39 was manually annotated 1 time for cluster EB.
- Start number 46 was manually annotated 1 time for cluster EB.
- Start number 56 was manually annotated 5 times for cluster EB.
- Start number 57 was manually annotated 37 times for cluster EB.

Info for manual annotations of cluster EH:

- Start number 69 was manually annotated 13 times for cluster EH.

Info for manual annotations of cluster FP:

- Start number 60 was manually annotated 2 times for cluster FP.

Info for manual annotations of cluster Z:

- Start number 77 was manually annotated 1 time for cluster Z.

Gene Information:

Gene: 32HC_17 Start: 10805, Stop: 11047, Start Num: 77

Candidate Starts for 32HC_17:

(47, 10718), (Start: 77 @10805 has 2 MA's), (129, 10973),

Gene: AEgle_11 Start: 8744, Stop: 9049, Start Num: 69

Candidate Starts for AEgle_11:

(18, 8474), (Start: 69 @8744 has 227 MA's), (86, 8786), (100, 8849), (125, 8939),

Gene: AGrandiflora_11 Start: 8731, Stop: 9039, Start Num: 69

Candidate Starts for AGrandiflora_11:

(Start: 69 @8731 has 227 MA's), (86, 8773), (116, 8887),

Gene: ATCC29399BC_9 Start: 6452, Stop: 6742, Start Num: 69

Candidate Starts for ATCC29399BC_9:

(Start: 69 @6452 has 227 MA's), (74, 6464), (76, 6470), (79, 6482), (86, 6500), (88, 6503), (89, 6518), (91, 6527), (92, 6530), (101, 6575), (114, 6617), (119, 6629), (138, 6713),

Gene: ATCC29399BT_9 Start: 6448, Stop: 6738, Start Num: 69

Candidate Starts for ATCC29399BT_9:

(65, 6442), (Start: 69 @6448 has 227 MA's), (76, 6466), (86, 6496), (89, 6514), (91, 6523), (92, 6526), (97, 6547), (114, 6613), (119, 6625), (124, 6649), (138, 6709),

Gene: Abidatro_11 Start: 8071, Stop: 8328, Start Num: 61

Candidate Starts for Abidatro_11:

(53, 8053), (Start: 61 @8071 has 22 MA's), (103, 8185), (125, 8239), (126, 8242),

Gene: Abigail_10 Start: 7773, Stop: 8030, Start Num: 57

Candidate Starts for Abigail_10:

(52, 7761), (Start: 57 @7773 has 37 MA's), (88, 7794), (127, 7950), (138, 8001),

Gene: AceofSpades_9 Start: 7020, Stop: 7301, Start Num: 69

Candidate Starts for AceofSpades_9:

(Start: 69 @7020 has 227 MA's), (84, 7053), (86, 7062), (89, 7080), (116, 7176),

Gene: Adolin_11 Start: 8716, Stop: 9024, Start Num: 68

Candidate Starts for Adolin_11:

(Start: 68 @8716 has 6 MA's), (89, 8779), (100, 8824), (125, 8914), (142, 9004),

Gene: AdoptaAdorbs_10 Start: 7655, Stop: 7909, Start Num: 61

Candidate Starts for AdoptaAdorbs_10:

(51, 7619), (Start: 61 @7655 has 22 MA's), (87, 7679), (95, 7724), (98, 7736), (111, 7781), (115, 7787), (120, 7799), (127, 7826),

Gene: Adumb2043_11 Start: 8743, Stop: 9048, Start Num: 69

Candidate Starts for Adumb2043_11:

(18, 8473), (Start: 69 @8743 has 227 MA's), (86, 8785), (100, 8848), (125, 8938),

Gene: AinMach_10 Start: 7842, Stop: 8153, Start Num: 69

Candidate Starts for AinMach_10:

(8, 7434), (36, 7746), (Start: 69 @7842 has 227 MA's), (78, 7863), (84, 7878), (86, 7887), (129, 8049), (146, 8145),

Gene: Akino08_10 Start: 7908, Stop: 8216, Start Num: 46

Candidate Starts for Akino08_10:

(Start: 39 @7896 has 1 MA's), (Start: 46 @7908 has 1 MA's), (95, 8022), (127, 8136),

Gene: Albanese_13 Start: 10184, Stop: 10474, Start Num: 69

Candidate Starts for Albanese_13:

(Start: 69 @10184 has 227 MA's), (78, 10208), (97, 10283), (99, 10292), (102, 10310), (127, 10391),

Gene: Albright_10 Start: 7654, Stop: 7911, Start Num: 57

Candidate Starts for Albright_10:

(52, 7642), (Start: 57 @7654 has 37 MA's), (88, 7675), (127, 7831), (138, 7882),

Gene: Aledel_9 Start: 7261, Stop: 7548, Start Num: 69

Candidate Starts for Aledel_9:

(Start: 69 @7261 has 227 MA's), (97, 7360), (127, 7468), (140, 7540),

Gene: AlexMinion_10 Start: 7681, Stop: 7935, Start Num: 61

Candidate Starts for AlexMinion_10:

(15, 7405), (20, 7444), (Start: 61 @7681 has 22 MA's), (96, 7753), (111, 7807), (118, 7819), (120, 7825), (127, 7852),

Gene: Amanises_12 Start: 8245, Stop: 8499, Start Num: 61

Candidate Starts for Amanises_12:

(31, 8116), (51, 8209), (53, 8227), (Start: 61 @8245 has 22 MA's), (87, 8269), (118, 8383), (120, 8389), (128, 8419),

Gene: AmiCi24_10 Start: 7655, Stop: 7909, Start Num: 61

Candidate Starts for AmiCi24_10:

(17, 7397), (21, 7421), (26, 7457), (30, 7505), (51, 7619), (Start: 61 @7655 has 22 MA's), (87, 7679), (96, 7727), (98, 7736), (111, 7781), (120, 7799), (127, 7826),

Gene: Amphitrite_10 Start: 7653, Stop: 7907, Start Num: 61

Candidate Starts for Amphitrite_10:

(51, 7617), (Start: 61 @7653 has 22 MA's), (87, 7677), (95, 7722), (98, 7734), (111, 7779), (115, 7785), (120, 7797), (127, 7824),

Gene: Amploria_11 Start: 8743, Stop: 9048, Start Num: 69

Candidate Starts for Amploria_11:

(18, 8473), (Start: 69 @8743 has 227 MA's), (86, 8785), (100, 8848), (125, 8938),

Gene: Amyev_11 Start: 8759, Stop: 9064, Start Num: 69

Candidate Starts for Amyev_11:

(18, 8489), (Start: 69 @8759 has 227 MA's), (86, 8801), (101, 8876),

Gene: Andrew_11 Start: 8034, Stop: 8288, Start Num: 61

Candidate Starts for Andrew_11:

(5, 7596), (13, 7704), (28, 7854), (31, 7905), (33, 7923), (51, 7998), (Start: 61 @8034 has 22 MA's), (87, 8058), (96, 8106), (111, 8160), (115, 8166), (120, 8178), (127, 8205),

Gene: AnnaLie_11 Start: 8000, Stop: 8320, Start Num: 57

Candidate Starts for AnnaLie_11:

(52, 7988), (Start: 57 @8000 has 37 MA's), (88, 8084), (126, 8237),

Gene: AppleCider_13 Start: 10140, Stop: 10409, Start Num: 69

Candidate Starts for AppleCider_13:

(Start: 63 @10128 has 7 MA's), (Start: 69 @10140 has 227 MA's), (76, 10158), (92, 10218), (97, 10239), (127, 10326),

Gene: Applejacks_9 Start: 6830, Stop: 7105, Start Num: 71

Candidate Starts for Applejacks_9:

(35, 6725), (45, 6749), (54, 6794), (Start: 71 @6830 has 5 MA's), (111, 6971), (127, 7007), (128, 7010),

Gene: Aquarius_9 Start: 6442, Stop: 6732, Start Num: 69

Candidate Starts for Aquarius_9:

(Start: 69 @6442 has 227 MA's), (74, 6454), (76, 6460), (79, 6472), (86, 6490), (88, 6493), (89, 6508), (91, 6517), (92, 6520), (101, 6565), (114, 6607), (119, 6619),

Gene: ArchiDore_12 Start: 8060, Stop: 8335, Start Num: 69

Candidate Starts for ArchiDore_12:

(Start: 69 @8060 has 227 MA's), (101, 8180), (109, 8210),

Gene: Armstrong_9 Start: 7425, Stop: 7688, Start Num: 57

Candidate Starts for Armstrong_9:

(43, 7368), (Start: 57 @7425 has 37 MA's), (82, 7440), (88, 7455), (115, 7572), (132, 7632), (139, 7662),

Gene: Asa16_11 Start: 8713, Stop: 9018, Start Num: 69

Candidate Starts for Asa16_11:

(18, 8443), (Start: 69 @8713 has 227 MA's), (86, 8755), (100, 8818), (116, 8869), (125, 8908),

Gene: Ascela_11 Start: 8748, Stop: 9053, Start Num: 69

Candidate Starts for Ascela_11:

(Start: 69 @8748 has 227 MA's), (86, 8790), (100, 8853),

Gene: Ashes_11 Start: 8267, Stop: 8554, Start Num: 69

Candidate Starts for Ashes_11:

(Start: 69 @8267 has 227 MA's), (110, 8417), (127, 8453), (129, 8459),

Gene: Atlantica_10 Start: 7655, Stop: 7909, Start Num: 61

Candidate Starts for Atlantica_10:

(17, 7397), (21, 7421), (26, 7457), (30, 7505), (51, 7619), (Start: 61 @7655 has 22 MA's), (87, 7679), (96, 7727), (98, 7736), (111, 7781), (120, 7799), (127, 7826),

Gene: Attacne_9 Start: 6453, Stop: 6743, Start Num: 69

Candidate Starts for Attacne_9:

(Start: 69 @6453 has 227 MA's), (74, 6465), (76, 6471), (79, 6483), (86, 6501), (88, 6504), (89, 6519), (91, 6528), (92, 6531), (101, 6576), (119, 6630), (124, 6654),

Gene: AustinPowers_9 Start: 7262, Stop: 7549, Start Num: 69

Candidate Starts for AustinPowers_9:

(Start: 69 @7262 has 227 MA's), (97, 7361), (127, 7469),

Gene: Avocadoman_10 Start: 7712, Stop: 7969, Start Num: 57

Candidate Starts for Avocadoman_10:

(52, 7700), (Start: 57 @7712 has 37 MA's), (88, 7733), (127, 7889), (138, 7940),

Gene: AylexOG_11 Start: 7993, Stop: 8256, Start Num: 56

Candidate Starts for AylexOG_11:

(52, 7984), (Start: 56 @7993 has 5 MA's), (88, 8020), (127, 8176), (130, 8191),

Gene: Ayotoya_15 Start: 9620, Stop: 9898, Start Num: 69

Candidate Starts for Ayotoya_15:

(Start: 67 @9617 has 3 MA's), (Start: 69 @9620 has 227 MA's), (100, 9731), (109, 9773), (116, 9791), (128, 9818),

Gene: Azaz_10 Start: 7706, Stop: 7960, Start Num: 61

Candidate Starts for Azaz_10:

(17, 7448), (21, 7472), (26, 7508), (30, 7556), (50, 7664), (51, 7670), (Start: 61 @7706 has 22 MA's), (87, 7730), (96, 7778), (98, 7787), (111, 7832), (120, 7850), (127, 7877),

Gene: BAjuniper_10 Start: 7595, Stop: 7852, Start Num: 56

Candidate Starts for BAjuniper_10:

(52, 7586), (Start: 56 @7595 has 5 MA's), (88, 7616), (126, 7769), (127, 7772), (136, 7817),

Gene: BBQValindra_10 Start: 7210, Stop: 7500, Start Num: 66

Candidate Starts for BBQValindra_10:

(Start: 62 @7204 has 3 MA's), (Start: 66 @7210 has 11 MA's), (84, 7246), (97, 7306), (127, 7402), (134, 7432), (142, 7486),

Gene: Babushka_10 Start: 7703, Stop: 7957, Start Num: 61

Candidate Starts for Babushka_10:

(17, 7445), (21, 7469), (26, 7505), (30, 7553), (51, 7667), (Start: 61 @7703 has 22 MA's), (87, 7727), (96, 7775), (111, 7829), (120, 7847), (127, 7874),

Gene: Bachaco_10 Start: 7786, Stop: 8049, Start Num: 57

Candidate Starts for Bachaco_10:

(52, 7774), (Start: 57 @7786 has 37 MA's), (88, 7813), (90, 7831), (115, 7930), (127, 7969),

Gene: BackstagePass_10 Start: 7181, Stop: 7477, Start Num: 62

Candidate Starts for BackstagePass_10:

(Start: 62 @7181 has 3 MA's), (Start: 66 @7187 has 11 MA's), (84, 7223), (97, 7283), (127, 7379), (134, 7409), (142, 7463),

Gene: BaileyBlu_10 Start: 6510, Stop: 6782, Start Num: 60

Candidate Starts for BaileyBlu_10:

(Start: 60 @6510 has 2 MA's), (81, 6525), (88, 6546), (91, 6570), (92, 6573), (94, 6579), (127, 6699),

Gene: Barnstormer_9 Start: 7938, Stop: 8219, Start Num: 69

Candidate Starts for Barnstormer_9:

(Start: 69 @7938 has 227 MA's), (101, 8052),

Gene: Beaupre_11 Start: 8268, Stop: 8555, Start Num: 69

Candidate Starts for Beaupre_11:

(Start: 69 @8268 has 227 MA's), (110, 8418), (127, 8454), (129, 8460),

Gene: Beethoven_13 Start: 10100, Stop: 10369, Start Num: 69

Candidate Starts for Beethoven_13:

(Start: 69 @10100 has 227 MA's), (88, 10151), (89, 10166), (97, 10199),

Gene: BelmontSKP_11 Start: 8000, Stop: 8320, Start Num: 57

Candidate Starts for BelmontSKP_11:

(52, 7988), (Start: 57 @8000 has 37 MA's), (88, 8084), (126, 8237),

Gene: Bengal_10 Start: 7654, Stop: 7911, Start Num: 57

Candidate Starts for Bengal_10:

(52, 7642), (Start: 57 @7654 has 37 MA's), (88, 7675), (127, 7831), (138, 7882),

Gene: Bennie_9 Start: 7245, Stop: 7514, Start Num: 69

Candidate Starts for Bennie_9:

(Start: 69 @7245 has 227 MA's), (76, 7263), (97, 7344), (115, 7389), (127, 7431),

Gene: Bernstein_9 Start: 7485, Stop: 7748, Start Num: 57

Candidate Starts for Bernstein_9:

(43, 7428), (Start: 57 @7485 has 37 MA's), (82, 7500), (88, 7515), (115, 7632), (132, 7692), (139, 7722),

Gene: Berrie_11 Start: 8715, Stop: 9020, Start Num: 69

Candidate Starts for Berrie_11:

(Start: 69 @8715 has 227 MA's), (86, 8757), (100, 8820), (101, 8832),

Gene: BetterKatz_15 Start: 9588, Stop: 9866, Start Num: 69

Candidate Starts for BetterKatz_15:

(14, 9243), (Start: 67 @9585 has 3 MA's), (Start: 69 @9588 has 227 MA's), (92, 9666), (100, 9699), (101, 9711), (109, 9741), (128, 9786), (134, 9801),

Gene: BigMack_9 Start: 7245, Stop: 7514, Start Num: 69

Candidate Starts for BigMack_9:

(Start: 69 @7245 has 227 MA's), (89, 7311), (97, 7344), (127, 7431), (140, 7503),

Gene: Bock_15 Start: 9338, Stop: 9616, Start Num: 69

Candidate Starts for Bock_15:

(Start: 67 @9335 has 3 MA's), (Start: 69 @9338 has 227 MA's), (92, 9416), (100, 9449), (101, 9461), (109, 9491), (128, 9536), (134, 9551),

Gene: Bodacious_9 Start: 7243, Stop: 7512, Start Num: 69

Candidate Starts for Bodacious_9:

(Start: 69 @7243 has 227 MA's), (92, 7321), (97, 7342), (127, 7429),

Gene: Bowser_10 Start: 7208, Stop: 7498, Start Num: 66

Candidate Starts for Bowser_10:

(Start: 66 @7208 has 11 MA's), (88, 7256), (97, 7304), (109, 7358), (134, 7430),

Gene: Brahms_9 Start: 7425, Stop: 7688, Start Num: 57

Candidate Starts for Brahms_9:

(43, 7368), (Start: 57 @7425 has 37 MA's), (82, 7440), (88, 7455), (115, 7572), (132, 7632), (139, 7662),

Gene: BrotherBLo_13 Start: 10107, Stop: 10376, Start Num: 69

Candidate Starts for BrotherBLo_13:

(Start: 69 @10107 has 227 MA's), (88, 10158), (89, 10173), (97, 10206),

Gene: BruceLethal_9 Start: 6441, Stop: 6731, Start Num: 69

Candidate Starts for BruceLethal_9:

(65, 6435), (Start: 69 @6441 has 227 MA's), (74, 6453), (76, 6459), (86, 6489), (88, 6492), (89, 6507), (91, 6516), (92, 6519), (97, 6540), (101, 6564), (114, 6606), (119, 6618), (124, 6642),

Gene: Brylie_15 Start: 9335, Stop: 9613, Start Num: 69

Candidate Starts for Brylie_15:

(Start: 67 @9332 has 3 MA's), (Start: 69 @9335 has 227 MA's), (92, 9413), (100, 9446), (101, 9458), (109, 9488), (128, 9533), (134, 9548),

Gene: Bunker_10 Start: 7204, Stop: 7500, Start Num: 62

Candidate Starts for Bunker_10:

(Start: 62 @7204 has 3 MA's), (Start: 66 @7210 has 11 MA's), (84, 7246), (97, 7306), (134, 7432), (142, 7486),

Gene: Burritobowl_10 Start: 7681, Stop: 7938, Start Num: 57

Candidate Starts for Burritobowl_10:

(52, 7669), (Start: 57 @7681 has 37 MA's), (88, 7702), (127, 7858), (138, 7909),

Gene: CallieOMalley_13 Start: 10140, Stop: 10409, Start Num: 69

Candidate Starts for CallieOMalley_13:

(Start: 63 @10128 has 7 MA's), (Start: 69 @10140 has 227 MA's), (76, 10158), (92, 10218), (97, 10239), (127, 10326),

Gene: CallinAllBarbz_10 Start: 6520, Stop: 6792, Start Num: 60

Candidate Starts for CallinAllBarbz_10:

(Start: 60 @6520 has 2 MA's), (81, 6535), (113, 6667), (127, 6709),

Gene: Camara_10 Start: 7656, Stop: 7910, Start Num: 61

Candidate Starts for Camara_10:

(51, 7620), (Start: 61 @7656 has 22 MA's), (87, 7680), (95, 7725), (98, 7737), (111, 7782), (115, 7788), (120, 7800), (127, 7827),

Gene: CanFranMach_10 Start: 7671, Stop: 7928, Start Num: 59

Candidate Starts for CanFranMach_10:

(59, 7671), (95, 7734), (127, 7848), (130, 7863),

Gene: Canowicakte_13 Start: 10175, Stop: 10444, Start Num: 69

Candidate Starts for Canowicakte_13:

(Start: 63 @10163 has 7 MA's), (Start: 69 @10175 has 227 MA's), (76, 10193), (92, 10253), (97, 10274), (127, 10361),

Gene: Cappuccino_11 Start: 8176, Stop: 8463, Start Num: 69

Candidate Starts for Cappuccino_11:

(Start: 69 @8176 has 227 MA's), (97, 8272), (129, 8368),

Gene: Caron_9 Start: 7966, Stop: 8247, Start Num: 69

Candidate Starts for Caron_9:

(7, 7567), (16, 7708), (Start: 69 @7966 has 227 MA's), (89, 8023), (101, 8080),

Gene: Carpal_13 Start: 10107, Stop: 10376, Start Num: 69

Candidate Starts for Carpal_13:

(Start: 69 @10107 has 227 MA's), (88, 10158), (89, 10173), (97, 10206),

Gene: Cashington_10 Start: 7671, Stop: 7928, Start Num: 57

Candidate Starts for Cashington_10:

(52, 7659), (Start: 57 @7671 has 37 MA's), (88, 7692), (127, 7848), (138, 7899),

Gene: Cassia_11 Start: 8837, Stop: 9139, Start Num: 69

Candidate Starts for Cassia_11:

(Start: 69 @8837 has 227 MA's), (86, 8879), (100, 8942), (116, 8993), (125, 9029),

Gene: Celaena_10 Start: 7723, Stop: 7986, Start Num: 57

Candidate Starts for Celaena_10:

(52, 7711), (Start: 57 @7723 has 37 MA's), (88, 7750), (90, 7768), (115, 7867), (127, 7906),

Gene: Cen1621_9 Start: 7077, Stop: 7358, Start Num: 69

Candidate Starts for Cen1621_9:

(36, 6987), (Start: 69 @7077 has 227 MA's), (73, 7083), (92, 7143),

Gene: ChewChew_9 Start: 7242, Stop: 7511, Start Num: 69

Candidate Starts for ChewChew_9:

(Start: 69 @7242 has 227 MA's), (93, 7323), (97, 7341), (115, 7386), (127, 7428),

Gene: Chicken_11 Start: 8034, Stop: 8288, Start Num: 61

Candidate Starts for Chicken_11:

(1, 7434), (5, 7593), (13, 7701), (31, 7905), (51, 7998), (53, 8016), (Start: 61 @8034 has 22 MA's), (87, 8058), (96, 8106), (120, 8178), (127, 8205),

Gene: Cholula_13 Start: 10152, Stop: 10421, Start Num: 69

Candidate Starts for Cholula_13:

(Start: 69 @10152 has 227 MA's), (88, 10203), (89, 10218), (97, 10251),

Gene: Chop_15 Start: 9368, Stop: 9646, Start Num: 69

Candidate Starts for Chop_15:

(Start: 67 @9365 has 3 MA's), (Start: 69 @9368 has 227 MA's), (100, 9479), (109, 9521), (116, 9539), (128, 9566),

Gene: Chridison_9 Start: 7262, Stop: 7549, Start Num: 69

Candidate Starts for Chridison_9:

(Start: 69 @7262 has 227 MA's), (97, 7361), (127, 7469),

Gene: Christian_9 Start: 7243, Stop: 7512, Start Num: 69

Candidate Starts for Christian_9:

(Start: 69 @7243 has 227 MA's), (92, 7321), (97, 7342), (127, 7429),

Gene: Clayda5_9 Start: 7425, Stop: 7688, Start Num: 57

Candidate Starts for Clayda5_9:

(43, 7368), (Start: 57 @7425 has 37 MA's), (82, 7440), (88, 7455), (115, 7572), (132, 7632), (139, 7662),

Gene: Coltrane_9 Start: 7425, Stop: 7688, Start Num: 57

Candidate Starts for Coltrane_9:

(43, 7368), (Start: 57 @7425 has 37 MA's), (82, 7440), (88, 7455), (115, 7572), (132, 7632), (139, 7662),

Gene: Community_12 Start: 9794, Stop: 10099, Start Num: 69

Candidate Starts for Community_12:

(Start: 69 @9794 has 227 MA's), (86, 9836), (100, 9899), (101, 9911), (125, 9989),

Gene: Coriander_11 Start: 7607, Stop: 7876, Start Num: 71

Candidate Starts for Coriander_11:

(Start: 71 @7607 has 5 MA's), (92, 7673), (109, 7736), (111, 7742), (127, 7778), (131, 7796),

Gene: Cota_9 Start: 6460, Stop: 6750, Start Num: 69

Candidate Starts for Cota_9:

(Start: 69 @6460 has 227 MA's), (74, 6472), (76, 6478), (79, 6490), (86, 6508), (88, 6511), (89, 6526), (91, 6535), (92, 6538), (97, 6559), (101, 6583), (114, 6625), (119, 6637), (122, 6652), (124, 6661),

Gene: Crewmate_12 Start: 9180, Stop: 9488, Start Num: 69

Candidate Starts for Crewmate_12:

(Start: 69 @9180 has 227 MA's), (100, 9285), (101, 9297), (125, 9375),

Gene: CristinaYang_9 Start: 7243, Stop: 7512, Start Num: 69

Candidate Starts for CristinaYang_9:

(Start: 69 @7243 has 227 MA's), (92, 7321), (97, 7342), (127, 7429),

Gene: CroZenni_10 Start: 7654, Stop: 7911, Start Num: 57

Candidate Starts for CroZenni_10:

(52, 7642), (Start: 57 @7654 has 37 MA's), (88, 7675), (126, 7828), (127, 7831), (130, 7846), (138, 7882),

Gene: CupcakePrincess_10 Start: 7631, Stop: 7951, Start Num: 57

Candidate Starts for CupcakePrincess_10:

(52, 7619), (Start: 57 @7631 has 37 MA's), (88, 7715), (127, 7871), (130, 7886),

Gene: Cyan_11 Start: 8735, Stop: 9040, Start Num: 69

Candidate Starts for Cyan_11:

(Start: 69 @8735 has 227 MA's), (86, 8777),

Gene: Cygnet_11 Start: 8032, Stop: 8286, Start Num: 61

Candidate Starts for Cygnet_11:

(Start: 61 @8032 has 22 MA's), (115, 8164), (125, 8197), (127, 8203),

Gene: Daiboju_9 Start: 7263, Stop: 7550, Start Num: 69

Candidate Starts for Daiboju_9:

(Start: 69 @7263 has 227 MA's), (93, 7344), (97, 7362), (127, 7470), (140, 7542),

Gene: DanHam62_10 Start: 7655, Stop: 7909, Start Num: 61

Candidate Starts for DanHam62_10:

(51, 7619), (Start: 61 @7655 has 22 MA's), (87, 7679), (95, 7724), (98, 7736), (111, 7781), (115, 7787), (120, 7799), (127, 7826),

Gene: DelRio_16 Start: 9845, Stop: 10123, Start Num: 69

Candidate Starts for DelRio_16:

(14, 9500), (Start: 67 @9842 has 3 MA's), (Start: 69 @9845 has 227 MA's), (100, 9956), (109, 9998), (116, 10016), (128, 10043), (137, 10076), (138, 10079),

Gene: DickRichards_10 Start: 8148, Stop: 8405, Start Num: 57

Candidate Starts for DickRichards_10:

(52, 8136), (Start: 57 @8148 has 37 MA's), (88, 8169), (126, 8322), (127, 8325), (130, 8340), (138, 8376),

Gene: Dino_13 Start: 10106, Stop: 10375, Start Num: 69

Candidate Starts for Dino_13:

(Start: 69 @10106 has 227 MA's), (88, 10157), (89, 10172), (97, 10205),

Gene: DirtyBoi_11 Start: 7580, Stop: 7870, Start Num: 66

Candidate Starts for DirtyBoi_11:

(Start: 66 @7580 has 11 MA's), (109, 7730),

Gene: Dmitri_11 Start: 7589, Stop: 7858, Start Num: 71

Candidate Starts for Dmitri_11:

(Start: 71 @7589 has 5 MA's), (84, 7616), (92, 7655), (101, 7688), (104, 7700), (111, 7724), (127, 7760), (131, 7778),

Gene: Doggs_10 Start: 7304, Stop: 7573, Start Num: 71

Candidate Starts for Doggs_10:

(Start: 71 @7304 has 5 MA's), (92, 7370), (109, 7433), (111, 7439), (127, 7475), (131, 7493),

Gene: Donkey_11 Start: 8176, Stop: 8463, Start Num: 69

Candidate Starts for Donkey_11:

(Start: 69 @8176 has 227 MA's), (97, 8272), (129, 8368),

Gene: DonkeyMan_10 Start: 7146, Stop: 7430, Start Num: 63

Candidate Starts for DonkeyMan_10:

(25, 6927), (51, 7095), (Start: 63 @7146 has 7 MA's), (89, 7209),

Gene: Doobus_10 Start: 7885, Stop: 8142, Start Num: 57

Candidate Starts for Doobus_10:

(52, 7873), (Start: 57 @7885 has 37 MA's), (88, 7906), (127, 8062), (138, 8113),

Gene: DrManhattan_11 Start: 8706, Stop: 9014, Start Num: 68

Candidate Starts for DrManhattan_11:

(Start: 68 @8706 has 6 MA's), (89, 8769), (92, 8781), (100, 8814), (125, 8904), (142, 8994),

Gene: DrParker_9 Start: 6467, Stop: 6757, Start Num: 69

Candidate Starts for DrParker_9:

(Start: 69 @6467 has 227 MA's), (74, 6479), (76, 6485), (79, 6497), (86, 6515), (88, 6518), (89, 6533), (91, 6542), (92, 6545), (97, 6566), (101, 6590), (114, 6632), (119, 6644), (124, 6668), (138, 6728),

Gene: DrRobert_9 Start: 7243, Stop: 7512, Start Num: 69

Candidate Starts for DrRobert_9:

(Start: 69 @7243 has 227 MA's), (97, 7342), (127, 7429),

Gene: DrSierra_11 Start: 8737, Stop: 9042, Start Num: 69

Candidate Starts for DrSierra_11:

(Start: 69 @8737 has 227 MA's), (86, 8779),

Gene: DreamTeam_9 Start: 7289, Stop: 7579, Start Num: 69

Candidate Starts for DreamTeam_9:

(Start: 69 @7289 has 227 MA's), (97, 7388), (105, 7427), (127, 7496),

Gene: DumpsterDude_12 Start: 8073, Stop: 8348, Start Num: 69

Candidate Starts for DumpsterDude_12:

(27, 7845), (Start: 69 @8073 has 227 MA's), (92, 8148), (109, 8223),

Gene: Eden_9 Start: 7514, Stop: 7780, Start Num: 57

Candidate Starts for Eden_9:

(43, 7457), (Start: 57 @7514 has 37 MA's), (88, 7547), (98, 7601), (139, 7754),

Gene: Eesa_11 Start: 8248, Stop: 8502, Start Num: 61

Candidate Starts for Eesa_11:

(2, 7771), (13, 7915), (31, 8119), (51, 8212), (53, 8230), (Start: 61 @8248 has 22 MA's), (87, 8272), (118, 8386), (120, 8392), (127, 8419),

Gene: Elener_12 Start: 9320, Stop: 9589, Start Num: 69

Candidate Starts for Elener_12:

(Start: 69 @9320 has 227 MA's), (78, 9341), (92, 9395), (116, 9464), (127, 9488), (129, 9494), (142, 9572),

Gene: Elezi_11 Start: 8714, Stop: 9019, Start Num: 69

Candidate Starts for Elezi_11:

(18, 8444), (Start: 69 @8714 has 227 MA's), (86, 8756), (100, 8819), (116, 8870), (125, 8909),

Gene: Emotion_10 Start: 7073, Stop: 7354, Start Num: 69

Candidate Starts for Emotion_10:

(Start: 69 @7073 has 227 MA's), (84, 7106), (86, 7115), (116, 7229), (127, 7256),

Gene: Enochoraptor_9 Start: 6463, Stop: 6753, Start Num: 69

Candidate Starts for Enochoraptor_9:

(Start: 69 @6463 has 227 MA's), (74, 6475), (76, 6481), (79, 6493), (86, 6511), (88, 6514), (89, 6529), (91, 6538), (92, 6541), (101, 6586), (114, 6628), (119, 6640),

Gene: Enoki_9 Start: 6448, Stop: 6738, Start Num: 69

Candidate Starts for Enoki_9:

(Start: 69 @6448 has 227 MA's), (74, 6460), (76, 6466), (79, 6478), (86, 6496), (88, 6499), (89, 6514), (91, 6523), (92, 6526), (101, 6571), (114, 6613), (119, 6625), (124, 6649),

Gene: Eraser_11 Start: 8714, Stop: 9019, Start Num: 69

Candidate Starts for Eraser_11:

(18, 8444), (Start: 69 @8714 has 227 MA's), (86, 8756), (100, 8819), (116, 8870), (125, 8909),

Gene: EstebanJulior_9 Start: 7287, Stop: 7556, Start Num: 69

Candidate Starts for EstebanJulior_9:

(Start: 69 @7287 has 227 MA's), (97, 7386), (98, 7392), (127, 7473),

Gene: Eunoia_9 Start: 7261, Stop: 7548, Start Num: 69

Candidate Starts for Eunoia_9:

(Start: 69 @7261 has 227 MA's), (97, 7360), (127, 7468), (140, 7540),

Gene: Exile_10 Start: 8625, Stop: 8930, Start Num: 69

Candidate Starts for Exile_10:

(Start: 69 @8625 has 227 MA's), (84, 8661), (86, 8670), (107, 8763), (129, 8835),

Gene: Eyes_10 Start: 7217, Stop: 7507, Start Num: 66

Candidate Starts for Eyes_10:

(Start: 66 @7217 has 11 MA's), (88, 7265), (97, 7313), (109, 7367), (127, 7409), (134, 7439), (142, 7493),

Gene: Finalfrontier_11 Start: 8160, Stop: 8423, Start Num: 56

Candidate Starts for Finalfrontier_11:

(52, 8151), (Start: 56 @8160 has 5 MA's), (88, 8187), (127, 8343), (130, 8358),

Gene: Fingolfin_10 Start: 7656, Stop: 7910, Start Num: 61

Candidate Starts for Fingolfin_10:

(17, 7398), (21, 7422), (26, 7458), (30, 7506), (51, 7620), (Start: 61 @7656 has 22 MA's), (87, 7680), (96, 7728), (98, 7737), (111, 7782), (120, 7800), (127, 7827),

Gene: FiveHead_10 Start: 7008, Stop: 7286, Start Num: 69

Candidate Starts for FiveHead_10:

(Start: 69 @7008 has 227 MA's), (84, 7041), (86, 7050),

Gene: FlameThrower_10 Start: 7611, Stop: 7874, Start Num: 57

Candidate Starts for FlameThrower_10:

(52, 7599), (Start: 57 @7611 has 37 MA's), (88, 7638), (90, 7656), (115, 7755), (127, 7794),

Gene: Floof_10 Start: 7504, Stop: 7794, Start Num: 69

Candidate Starts for Floof_10:

(36, 7414), (Start: 69 @7504 has 227 MA's), (97, 7600), (101, 7624), (127, 7693),

Gene: Fluke_13 Start: 10148, Stop: 10417, Start Num: 69

Candidate Starts for Fluke_13:

(Start: 69 @10148 has 227 MA's), (88, 10199), (89, 10214), (97, 10247), (127, 10334),

Gene: Flutur_11 Start: 8734, Stop: 9042, Start Num: 69

Candidate Starts for Flutur_11:

(Start: 69 @8734 has 227 MA's), (86, 8776),

Gene: Forester_18 Start: 9056, Stop: 9346, Start Num: 69

Candidate Starts for Forester_18:

(Start: 69 @9056 has 227 MA's), (92, 9131), (97, 9152), (127, 9245),

Gene: Francois_15 Start: 9346, Stop: 9627, Start Num: 67

Candidate Starts for Francois_15:

(Start: 67 @9346 has 3 MA's), (Start: 69 @9349 has 227 MA's), (100, 9460), (109, 9502), (128, 9547), (134, 9562), (141, 9610),

Gene: Franklin22_9 Start: 7495, Stop: 7761, Start Num: 57

Candidate Starts for Franklin22_9:

(Start: 57 @7495 has 37 MA's), (88, 7528), (127, 7681), (139, 7735),

Gene: GEazy_10 Start: 7219, Stop: 7509, Start Num: 66

Candidate Starts for GEazy_10:

(Start: 62 @7213 has 3 MA's), (Start: 66 @7219 has 11 MA's), (84, 7255), (97, 7315), (134, 7441), (142, 7495),

Gene: Gack_9 Start: 7565, Stop: 7828, Start Num: 57

Candidate Starts for Gack_9:

(43, 7508), (Start: 57 @7565 has 37 MA's), (88, 7595), (91, 7619), (127, 7748), (139, 7802),

Gene: Galaxy_11 Start: 8078, Stop: 8335, Start Num: 61

Candidate Starts for Galaxy_11:

(53, 8060), (Start: 61 @8078 has 22 MA's), (126, 8249),

Gene: Gambol_11 Start: 8176, Stop: 8463, Start Num: 69

Candidate Starts for Gambol_11:

(Start: 69 @8176 has 227 MA's), (97, 8272), (129, 8368),

Gene: GardenState_10 Start: 8171, Stop: 8461, Start Num: 69

Candidate Starts for GardenState_10:

(Start: 69 @8171 has 227 MA's), (97, 8264),

Gene: Gibbzilla_12 Start: 7535, Stop: 7786, Start Num: 81

Candidate Starts for Gibbzilla_12:

(34, 7430), (44, 7466), (81, 7535), (85, 7544), (120, 7676),

Gene: Giorgio_11 Start: 8269, Stop: 8556, Start Num: 69

Candidate Starts for Giorgio_11:

(Start: 69 @8269 has 227 MA's), (110, 8419), (127, 8455), (129, 8461),

Gene: Gisselle_9 Start: 7289, Stop: 7579, Start Num: 69

Candidate Starts for Gisselle_9:

(Start: 69 @7289 has 227 MA's), (97, 7388), (105, 7427), (127, 7496),

Gene: Glenn_13 Start: 10158, Stop: 10427, Start Num: 69

Candidate Starts for Glenn_13:

(Start: 69 @10158 has 227 MA's), (88, 10209), (89, 10224), (97, 10257),

Gene: Glotell_10 Start: 7655, Stop: 7909, Start Num: 61

Candidate Starts for Glotell_10:

(17, 7397), (21, 7421), (26, 7457), (30, 7505), (51, 7619), (Start: 61 @7655 has 22 MA's), (87, 7679), (96, 7727), (98, 7736), (111, 7781), (115, 7787), (120, 7799), (127, 7826),

Gene: GrandSlam_15 Start: 9368, Stop: 9646, Start Num: 69

Candidate Starts for GrandSlam_15:

(Start: 67 @9365 has 3 MA's), (Start: 69 @9368 has 227 MA's), (100, 9479), (109, 9521), (116, 9539), (128, 9566),

Gene: Gravel_12 Start: 8244, Stop: 8498, Start Num: 61

Candidate Starts for Gravel_12:

(31, 8115), (51, 8208), (53, 8226), (Start: 61 @8244 has 22 MA's), (87, 8268), (118, 8382), (120, 8388), (128, 8418),

Gene: Graynor_13 Start: 10164, Stop: 10433, Start Num: 69

Candidate Starts for Graynor_13:

(Start: 63 @10152 has 7 MA's), (Start: 69 @10164 has 227 MA's), (76, 10182), (88, 10215), (97, 10263), (115, 10308), (127, 10350),

Gene: GreenHearts_13 Start: 10230, Stop: 10520, Start Num: 69

Candidate Starts for GreenHearts_13:

(Start: 69 @10230 has 227 MA's), (78, 10254), (97, 10329), (99, 10338), (102, 10356), (127, 10437),

Gene: Greenhouse_13 Start: 10155, Stop: 10445, Start Num: 69

Candidate Starts for Greenhouse_13:

(Start: 69 @10155 has 227 MA's), (78, 10179), (89, 10221), (97, 10254), (99, 10263), (102, 10281), (127, 10362),

Gene: Gretchen_10 Start: 9050, Stop: 9340, Start Num: 69
Candidate Starts for Gretchen_10:
(Start: 69 @9050 has 227 MA's), (92, 9125), (97, 9146), (127, 9239),

Gene: GrimEater_11 Start: 6522, Stop: 6794, Start Num: 60
Candidate Starts for GrimEater_11:
(42, 6459), (Start: 60 @6522 has 2 MA's), (88, 6558), (95, 6600),

Gene: Gumpizza_11 Start: 8268, Stop: 8555, Start Num: 69
Candidate Starts for Gumpizza_11:
(Start: 69 @8268 has 227 MA's), (110, 8418), (127, 8454), (129, 8460),

Gene: Gustav_9 Start: 6894, Stop: 7172, Start Num: 64
Candidate Starts for Gustav_9:
(Start: 64 @6894 has 6 MA's), (84, 6930), (97, 6987), (106, 7020), (109, 7032), (111, 7038), (128, 7077), (138, 7125),

Gene: Halsey_11 Start: 8267, Stop: 8554, Start Num: 69
Candidate Starts for Halsey_11:
(Start: 69 @8267 has 227 MA's), (110, 8417), (127, 8453), (129, 8459),

Gene: HamCheese_10 Start: 7655, Stop: 7909, Start Num: 61
Candidate Starts for HamCheese_10:
(51, 7619), (Start: 61 @7655 has 22 MA's), (87, 7679), (95, 7724), (98, 7736), (111, 7781), (115, 7787), (120, 7799), (127, 7826),

Gene: Hamood_15 Start: 9368, Stop: 9646, Start Num: 69
Candidate Starts for Hamood_15:
(Start: 67 @9365 has 3 MA's), (Start: 69 @9368 has 227 MA's), (100, 9479), (109, 9521), (116, 9539), (128, 9566),

Gene: HannahD_10 Start: 7213, Stop: 7509, Start Num: 62
Candidate Starts for HannahD_10:
(Start: 62 @7213 has 3 MA's), (Start: 66 @7219 has 11 MA's), (84, 7255), (97, 7315), (134, 7441), (142, 7495),

Gene: HeadNerd_9 Start: 7245, Stop: 7514, Start Num: 69
Candidate Starts for HeadNerd_9:
(Start: 69 @7245 has 227 MA's), (76, 7263), (97, 7344), (115, 7389), (127, 7431),

Gene: Hedwig_11 Start: 7580, Stop: 7870, Start Num: 66
Candidate Starts for Hedwig_11:
(Start: 66 @7580 has 11 MA's), (109, 7730),

Gene: Heinz_10 Start: 7185, Stop: 7466, Start Num: 63
Candidate Starts for Heinz_10:
(9, 6783), (25, 6966), (51, 7134), (Start: 63 @7185 has 7 MA's), (88, 7233), (92, 7260),

Gene: Herb_9 Start: 7263, Stop: 7550, Start Num: 69
Candidate Starts for Herb_9:
(Start: 69 @7263 has 227 MA's), (93, 7344), (97, 7362), (127, 7470), (140, 7542),

Gene: Hibiscus_10 Start: 7156, Stop: 7443, Start Num: 63

Candidate Starts for Hibiscus_10:

(25, 6937), (51, 7105), (Start: 63 @7156 has 7 MA's), (92, 7234),

Gene: Honk_9 Start: 7045, Stop: 7326, Start Num: 69

Candidate Starts for Honk_9:

(18, 6799), (36, 6955), (Start: 69 @7045 has 227 MA's), (84, 7072), (92, 7111),

Gene: Huckleberry_9 Start: 7245, Stop: 7514, Start Num: 69

Candidate Starts for Huckleberry_9:

(Start: 69 @7245 has 227 MA's), (76, 7263), (97, 7344), (115, 7389), (127, 7431),

Gene: HunterDalle_9 Start: 7261, Stop: 7548, Start Num: 69

Candidate Starts for HunterDalle_9:

(Start: 69 @7261 has 227 MA's), (97, 7360), (127, 7468),

Gene: Huntingdon_13 Start: 10141, Stop: 10431, Start Num: 69

Candidate Starts for Huntingdon_13:

(4, 9655), (10, 9742), (22, 9880), (Start: 69 @10141 has 227 MA's), (78, 10165), (97, 10240), (102, 10267), (127, 10348),

Gene: IAmGroot_10 Start: 8815, Stop: 9105, Start Num: 69

Candidate Starts for IAmGroot_10:

(Start: 69 @8815 has 227 MA's), (97, 8908),

Gene: IUFootball_10 Start: 7184, Stop: 7495, Start Num: 69

Candidate Starts for IUFootball_10:

(Start: 69 @7184 has 227 MA's), (100, 7289), (132, 7412),

Gene: IdentityCrisis_11 Start: 8164, Stop: 8412, Start Num: 67

Candidate Starts for IdentityCrisis_11:

(Start: 67 @8164 has 3 MA's), (70, 8170), (109, 8281), (144, 8398),

Gene: Immaculata_13 Start: 10152, Stop: 10421, Start Num: 69

Candidate Starts for Immaculata_13:

(Start: 69 @10152 has 227 MA's), (88, 10203), (89, 10218), (97, 10251),

Gene: Iter_11 Start: 8748, Stop: 9053, Start Num: 69

Candidate Starts for Iter_11:

(Start: 69 @8748 has 227 MA's), (86, 8790), (100, 8853),

Gene: IttyBittyPiggy_11 Start: 8739, Stop: 9041, Start Num: 69

Candidate Starts for IttyBittyPiggy_11:

(Start: 69 @8739 has 227 MA's), (86, 8781), (100, 8844), (125, 8931),

Gene: Jabb_10 Start: 7631, Stop: 7951, Start Num: 57

Candidate Starts for Jabb_10:

(52, 7619), (Start: 57 @7631 has 37 MA's), (88, 7715), (127, 7871), (130, 7886),

Gene: Janeemi_12 Start: 9825, Stop: 10130, Start Num: 69

Candidate Starts for Janeemi_12:

(Start: 69 @9825 has 227 MA's), (86, 9867), (100, 9930), (101, 9942), (116, 9981), (125, 10020),

Gene: Jankie_12 Start: 6521, Stop: 6793, Start Num: 60

Candidate Starts for Jankie_12:

(42, 6458), (Start: 60 @6521 has 2 MA's), (88, 6557), (95, 6599),

Gene: JasmineDragon_10 Start: 7008, Stop: 7289, Start Num: 69

Candidate Starts for JasmineDragon_10:

(Start: 69 @7008 has 227 MA's), (84, 7041), (86, 7050), (116, 7164), (139, 7245),

Gene: Joann_13 Start: 10133, Stop: 10423, Start Num: 69

Candidate Starts for Joann_13:

(4, 9647), (6, 9689), (10, 9734), (Start: 69 @10133 has 227 MA's), (78, 10157), (97, 10232), (99, 10241), (102, 10259), (127, 10340),

Gene: Joemato_11 Start: 8735, Stop: 9040, Start Num: 69

Candidate Starts for Joemato_11:

(Start: 69 @8735 has 227 MA's), (86, 8777),

Gene: JohnDoe_11 Start: 8733, Stop: 9038, Start Num: 69

Candidate Starts for JohnDoe_11:

(Start: 69 @8733 has 227 MA's), (86, 8775),

Gene: JohnThicc_10 Start: 7008, Stop: 7286, Start Num: 69

Candidate Starts for JohnThicc_10:

(Start: 69 @7008 has 227 MA's), (84, 7041), (86, 7050),

Gene: Johnathan_10 Start: 7654, Stop: 7911, Start Num: 57

Candidate Starts for Johnathan_10:

(52, 7642), (Start: 57 @7654 has 37 MA's), (88, 7675), (127, 7831), (138, 7882),

Gene: Jojo24_10 Start: 7151, Stop: 7438, Start Num: 63

Candidate Starts for Jojo24_10:

(25, 6932), (51, 7100), (Start: 63 @7151 has 7 MA's), (92, 7229),

Gene: Jstan_11 Start: 8714, Stop: 9019, Start Num: 69

Candidate Starts for Jstan_11:

(18, 8444), (Start: 69 @8714 has 227 MA's), (86, 8756), (100, 8819), (116, 8870), (125, 8909),

Gene: Jumboset_13 Start: 10101, Stop: 10370, Start Num: 69

Candidate Starts for Jumboset_13:

(Start: 69 @10101 has 227 MA's), (88, 10152), (89, 10167), (97, 10200),

Gene: JuneStar_11 Start: 8833, Stop: 9135, Start Num: 69

Candidate Starts for JuneStar_11:

(Start: 69 @8833 has 227 MA's), (86, 8875), (100, 8938), (116, 8989), (125, 9025),

Gene: Juno112_10 Start: 7656, Stop: 7910, Start Num: 61

Candidate Starts for Juno112_10:

(17, 7398), (21, 7422), (26, 7458), (30, 7506), (51, 7620), (Start: 61 @7656 has 22 MA's), (87, 7680), (96, 7728), (98, 7737), (111, 7782), (120, 7800), (127, 7827),

Gene: JustASigh_10 Start: 8248, Stop: 8499, Start Num: 77

Candidate Starts for JustASigh_10:

(47, 8155), (55, 8188), (Start: 77 @8248 has 2 MA's), (83, 8263), (124, 8410), (127, 8419), (128, 8422),

Gene: KHumphrey_10 Start: 7655, Stop: 7909, Start Num: 61
Candidate Starts for KHumphrey_10:
(17, 7397), (21, 7421), (26, 7457), (30, 7505), (51, 7619), (Start: 61 @7655 has 22 MA's), (87, 7679),
(96, 7727), (98, 7736), (111, 7781), (115, 7787), (120, 7799), (127, 7826),

Gene: Kalimba_11 Start: 8176, Stop: 8463, Start Num: 69
Candidate Starts for Kalimba_11:
(Start: 69 @8176 has 227 MA's), (97, 8272), (129, 8368),

Gene: Kalizoi_13 Start: 10100, Stop: 10369, Start Num: 69
Candidate Starts for Kalizoi_13:
(Start: 69 @10100 has 227 MA's), (88, 10151), (89, 10166), (97, 10199),

Gene: Katzastrophic_10 Start: 7786, Stop: 8049, Start Num: 57
Candidate Starts for Katzastrophic_10:
(52, 7774), (Start: 57 @7786 has 37 MA's), (88, 7813), (90, 7831), (115, 7930), (127, 7969),

Gene: Kaylissa_11 Start: 8736, Stop: 9041, Start Num: 69
Candidate Starts for Kaylissa_11:
(Start: 69 @8736 has 227 MA's), (86, 8778),

Gene: KeAlii_11 Start: 8765, Stop: 9073, Start Num: 69
Candidate Starts for KeAlii_11:
(Start: 69 @8765 has 227 MA's), (84, 8798), (86, 8807), (132, 8993), (142, 9053),

Gene: Keiki_9 Start: 6460, Stop: 6750, Start Num: 69
Candidate Starts for Keiki_9:
(Start: 69 @6460 has 227 MA's), (74, 6472), (76, 6478), (79, 6490), (86, 6508), (88, 6511), (89, 6526),
(91, 6535), (92, 6538), (97, 6559), (101, 6583), (114, 6625), (119, 6637), (122, 6652), (124, 6661),

Gene: KendraB23_12 Start: 8245, Stop: 8499, Start Num: 61
Candidate Starts for KendraB23_12:
(31, 8116), (32, 8131), (53, 8227), (Start: 61 @8245 has 22 MA's), (87, 8269), (118, 8383), (120, 8389),
(128, 8419),

Gene: Kiko_11 Start: 7416, Stop: 7706, Start Num: 66
Candidate Starts for Kiko_11:
(23, 7176), (Start: 62 @7410 has 3 MA's), (Start: 66 @7416 has 11 MA's), (101, 7536), (127, 7608),

Gene: KingBob_9 Start: 7263, Stop: 7550, Start Num: 69
Candidate Starts for KingBob_9:
(Start: 69 @7263 has 227 MA's), (93, 7344), (97, 7362), (127, 7470), (140, 7542),

Gene: Kittykat_9 Start: 7286, Stop: 7555, Start Num: 69
Candidate Starts for Kittykat_9:
(Start: 69 @7286 has 227 MA's), (97, 7385), (115, 7430), (127, 7472), (133, 7499),

Gene: Korra_13 Start: 10106, Stop: 10375, Start Num: 69
Candidate Starts for Korra_13:
(Start: 69 @10106 has 227 MA's), (88, 10157), (89, 10172), (97, 10205),

Gene: Kubed_9 Start: 6450, Stop: 6740, Start Num: 69
Candidate Starts for Kubed_9:

(Start: 69 @6450 has 227 MA's), (74, 6462), (76, 6468), (79, 6480), (86, 6498), (88, 6501), (89, 6516), (91, 6525), (92, 6528), (101, 6573), (114, 6615), (119, 6627), (122, 6642), (124, 6651),

Gene: LadyAstra_10 Start: 7008, Stop: 7286, Start Num: 69

Candidate Starts for LadyAstra_10:

(Start: 69 @7008 has 227 MA's), (84, 7041), (86, 7050),

Gene: Lakshmi_13 Start: 10160, Stop: 10450, Start Num: 69

Candidate Starts for Lakshmi_13:

(Start: 69 @10160 has 227 MA's), (78, 10184), (97, 10259), (99, 10268), (102, 10286), (127, 10367),

Gene: Laphuphu24k_10 Start: 7655, Stop: 7909, Start Num: 61

Candidate Starts for Laphuphu24k_10:

(51, 7619), (Start: 61 @7655 has 22 MA's), (87, 7679), (95, 7724), (98, 7736), (111, 7781), (115, 7787), (120, 7799), (127, 7826),

Gene: Lasagna_9 Start: 7243, Stop: 7512, Start Num: 69

Candidate Starts for Lasagna_9:

(Start: 69 @7243 has 227 MA's), (92, 7321), (97, 7342), (127, 7429),

Gene: Lauchelly_9 Start: 6445, Stop: 6735, Start Num: 69

Candidate Starts for Lauchelly_9:

(Start: 69 @6445 has 227 MA's), (74, 6457), (76, 6463), (79, 6475), (86, 6493), (88, 6496), (89, 6511), (91, 6520), (92, 6523), (101, 6568), (114, 6610), (119, 6622), (124, 6646),

Gene: Lego_11 Start: 8734, Stop: 9042, Start Num: 69

Candidate Starts for Lego_11:

(Start: 69 @8734 has 227 MA's), (86, 8776), (89, 8794),

Gene: Lennox_9 Start: 7243, Stop: 7512, Start Num: 69

Candidate Starts for Lennox_9:

(Start: 69 @7243 has 227 MA's), (97, 7342), (115, 7387), (127, 7429),

Gene: Leona_10 Start: 7706, Stop: 7960, Start Num: 61

Candidate Starts for Leona_10:

(17, 7448), (21, 7472), (26, 7508), (30, 7556), (50, 7664), (51, 7670), (Start: 61 @7706 has 22 MA's), (87, 7730), (96, 7778), (98, 7787), (111, 7832), (120, 7850), (127, 7877),

Gene: Leviosa_9 Start: 6466, Stop: 6756, Start Num: 69

Candidate Starts for Leviosa_9:

(Start: 69 @6466 has 227 MA's), (76, 6484), (79, 6496), (86, 6514), (88, 6517), (89, 6532), (91, 6541), (92, 6544), (97, 6565), (101, 6589), (114, 6631), (119, 6643), (124, 6667), (138, 6727),

Gene: Liebe_10 Start: 7184, Stop: 7495, Start Num: 69

Candidate Starts for Liebe_10:

(Start: 69 @7184 has 227 MA's), (100, 7289), (132, 7412),

Gene: LilBandit_9 Start: 6450, Stop: 6740, Start Num: 69

Candidate Starts for LilBandit_9:

(Start: 69 @6450 has 227 MA's), (74, 6462), (76, 6468), (79, 6480), (86, 6498), (88, 6501), (89, 6516), (91, 6525), (92, 6528), (97, 6549), (101, 6573), (114, 6615), (119, 6627),

Gene: LilStuart_9 Start: 7243, Stop: 7512, Start Num: 69

Candidate Starts for LilStuart_9:
(Start: 69 @7243 has 227 MA's), (92, 7321), (97, 7342), (127, 7429),

Gene: Lilo27_10 Start: 7631, Stop: 7888, Start Num: 57
Candidate Starts for Lilo27_10:
(52, 7619), (Start: 57 @7631 has 37 MA's), (88, 7652), (127, 7808), (130, 7823), (138, 7859),

Gene: Litotes_13 Start: 10128, Stop: 10397, Start Num: 69
Candidate Starts for Litotes_13:
(Start: 63 @10116 has 7 MA's), (Start: 69 @10128 has 227 MA's), (76, 10146), (88, 10179), (97, 10227), (115, 10272), (127, 10314),

Gene: LittleTokyo_11 Start: 7988, Stop: 8242, Start Num: 61
Candidate Starts for LittleTokyo_11:
(Start: 61 @7988 has 22 MA's), (95, 8057), (125, 8153), (127, 8159),

Gene: Lizalica_11 Start: 8720, Stop: 9028, Start Num: 69
Candidate Starts for Lizalica_11:
(18, 8450), (Start: 69 @8720 has 227 MA's), (86, 8762),

Gene: London_11 Start: 8714, Stop: 9019, Start Num: 69
Candidate Starts for London_11:
(18, 8444), (Start: 69 @8714 has 227 MA's), (86, 8756), (100, 8819), (116, 8870), (125, 8909),

Gene: Loviatar_10 Start: 7911, Stop: 8231, Start Num: 39
Candidate Starts for Loviatar_10:
(Start: 39 @7911 has 1 MA's), (Start: 46 @7923 has 1 MA's), (95, 8037), (127, 8151),

Gene: Lucy_9 Start: 7234, Stop: 7503, Start Num: 69
Candidate Starts for Lucy_9:
(Start: 69 @7234 has 227 MA's), (76, 7252), (97, 7333), (115, 7378), (127, 7420),

Gene: MEAK_9 Start: 6452, Stop: 6742, Start Num: 69
Candidate Starts for MEAK_9:
(Start: 69 @6452 has 227 MA's), (74, 6464), (76, 6470), (79, 6482), (86, 6500), (88, 6503), (89, 6518), (91, 6527), (92, 6530), (101, 6575), (114, 6617), (119, 6629), (124, 6653), (138, 6713),

Gene: MaGuCo_10 Start: 7043, Stop: 7435, Start Num: 69
Candidate Starts for MaGuCo_10:
(Start: 69 @7043 has 227 MA's), (72, 7049), (97, 7136), (100, 7148), (132, 7271),

Gene: Mabodamaca_10 Start: 8271, Stop: 8558, Start Num: 69
Candidate Starts for Mabodamaca_10:
(Start: 69 @8271 has 227 MA's), (139, 8505), (142, 8535),

Gene: MagicMan_10 Start: 7547, Stop: 7837, Start Num: 66
Candidate Starts for MagicMan_10:
(Start: 66 @7547 has 11 MA's), (88, 7595), (97, 7643), (109, 7697), (134, 7769), (142, 7823),

Gene: Mahdia_9 Start: 6893, Stop: 7174, Start Num: 64
Candidate Starts for Mahdia_9:
(Start: 64 @6893 has 6 MA's), (84, 6932), (109, 7034), (111, 7040), (128, 7079),

Gene: MakCheese_13 Start: 7880, Stop: 8155, Start Num: 69
Candidate Starts for MakCheese_13:
(27, 7652), (Start: 69 @7880 has 227 MA's), (91, 7952), (108, 8027), (128, 8075), (129, 8078),

Gene: Makoto_9 Start: 7243, Stop: 7512, Start Num: 69
Candidate Starts for Makoto_9:
(Start: 69 @7243 has 227 MA's), (97, 7342), (115, 7387), (127, 7429),

Gene: Malibo_10 Start: 7477, Stop: 7743, Start Num: 71
Candidate Starts for Malibo_10:
(Start: 71 @7477 has 5 MA's), (91, 7537), (101, 7573), (109, 7603), (111, 7609), (127, 7645), (132, 7669), (142, 7729),

Gene: MamaPearl_9 Start: 7287, Stop: 7556, Start Num: 69
Candidate Starts for MamaPearl_9:
(Start: 69 @7287 has 227 MA's), (97, 7386), (98, 7392), (127, 7473),

Gene: Maria1952_9 Start: 7263, Stop: 7550, Start Num: 69
Candidate Starts for Maria1952_9:
(Start: 69 @7263 has 227 MA's), (93, 7344), (97, 7362), (127, 7470), (140, 7542),

Gene: Maureen_10 Start: 7184, Stop: 7495, Start Num: 69
Candidate Starts for Maureen_10:
(Start: 69 @7184 has 227 MA's), (100, 7289), (132, 7412),

Gene: MeganNoll_13 Start: 10158, Stop: 10427, Start Num: 69
Candidate Starts for MeganNoll_13:
(Start: 69 @10158 has 227 MA's), (88, 10209), (89, 10224), (97, 10257),

Gene: Milomuff_11 Start: 8040, Stop: 8297, Start Num: 57
Candidate Starts for Milomuff_11:
(52, 8028), (Start: 57 @8040 has 37 MA's), (88, 8061), (127, 8217), (130, 8232), (138, 8268),

Gene: MiniMommy_9 Start: 7008, Stop: 7289, Start Num: 69
Candidate Starts for MiniMommy_9:
(Start: 69 @7008 has 227 MA's), (84, 7041), (116, 7164), (139, 7245),

Gene: Misaeng_13 Start: 10206, Stop: 10496, Start Num: 69
Candidate Starts for Misaeng_13:
(22, 9945), (Start: 69 @10206 has 227 MA's), (78, 10230), (89, 10272), (97, 10305), (102, 10332), (127, 10413),

Gene: MissSwiss_11 Start: 8710, Stop: 9018, Start Num: 68
Candidate Starts for MissSwiss_11:
(Start: 68 @8710 has 6 MA's), (89, 8773), (121, 8890), (125, 8908), (142, 8998),

Gene: Moki_9 Start: 7245, Stop: 7514, Start Num: 69
Candidate Starts for Moki_9:
(Start: 69 @7245 has 227 MA's), (76, 7263), (97, 7344), (115, 7389), (127, 7431),

Gene: Moonflower_11 Start: 7612, Stop: 7881, Start Num: 71
Candidate Starts for Moonflower_11:
(Start: 71 @7612 has 5 MA's), (92, 7678), (109, 7741), (111, 7747), (127, 7783), (131, 7801),

Gene: Morrissey_9 Start: 6870, Stop: 7154, Start Num: 64

Candidate Starts for Morrissey_9:

(Start: 64 @6870 has 6 MA's), (84, 6909), (91, 6942), (97, 6966), (109, 7014), (128, 7059),

Gene: Moss_11 Start: 8267, Stop: 8554, Start Num: 69

Candidate Starts for Moss_11:

(Start: 69 @8267 has 227 MA's), (110, 8417), (127, 8453), (129, 8459),

Gene: Moyashi_9 Start: 6470, Stop: 6760, Start Num: 69

Candidate Starts for Moyashi_9:

(Start: 69 @6470 has 227 MA's), (74, 6482), (76, 6488), (86, 6518), (88, 6521), (89, 6536), (91, 6545), (92, 6548), (101, 6593), (119, 6647), (124, 6671),

Gene: MrAK_9 Start: 6479, Stop: 6769, Start Num: 69

Candidate Starts for MrAK_9:

(Start: 69 @6479 has 227 MA's), (74, 6491), (76, 6497), (79, 6509), (86, 6527), (88, 6530), (89, 6545), (91, 6554), (92, 6557), (101, 6602), (119, 6656), (124, 6680), (138, 6740),

Gene: MrBoss_13 Start: 10128, Stop: 10397, Start Num: 69

Candidate Starts for MrBoss_13:

(Start: 63 @10116 has 7 MA's), (Start: 69 @10128 has 227 MA's), (76, 10146), (88, 10179), (97, 10227), (115, 10272), (127, 10314),

Gene: MrGloopy_13 Start: 10091, Stop: 10360, Start Num: 69

Candidate Starts for MrGloopy_13:

(Start: 69 @10091 has 227 MA's), (88, 10142), (89, 10157), (97, 10190),

Gene: MsUbiquitous_10 Start: 7631, Stop: 7951, Start Num: 57

Candidate Starts for MsUbiquitous_10:

(52, 7619), (Start: 57 @7631 has 37 MA's), (88, 7715), (127, 7871), (130, 7886),

Gene: Mudpuppy_11 Start: 8734, Stop: 9042, Start Num: 69

Candidate Starts for Mudpuppy_11:

(Start: 69 @8734 has 227 MA's), (86, 8776), (89, 8794), (116, 8890),

Gene: Mulch_15 Start: 9335, Stop: 9613, Start Num: 69

Candidate Starts for Mulch_15:

(Start: 67 @9332 has 3 MA's), (Start: 69 @9335 has 227 MA's), (92, 9413), (100, 9446), (101, 9458), (109, 9488), (128, 9533), (134, 9548),

Gene: Mysterium_11 Start: 8268, Stop: 8555, Start Num: 69

Candidate Starts for Mysterium_11:

(Start: 69 @8268 has 227 MA's), (110, 8418), (127, 8454), (129, 8460),

Gene: Nadeem_15 Start: 9335, Stop: 9613, Start Num: 69

Candidate Starts for Nadeem_15:

(Start: 67 @9332 has 3 MA's), (Start: 69 @9335 has 227 MA's), (92, 9413), (100, 9446), (101, 9458), (109, 9488), (128, 9533), (134, 9548),

Gene: Nancia_9 Start: 7243, Stop: 7512, Start Num: 69

Candidate Starts for Nancia_9:

(Start: 69 @7243 has 227 MA's), (92, 7321), (97, 7342), (127, 7429),

Gene: NancyRae_15 Start: 9335, Stop: 9613, Start Num: 69

Candidate Starts for NancyRae_15:

(Start: 67 @9332 has 3 MA's), (Start: 69 @9335 has 227 MA's), (92, 9413), (100, 9446), (101, 9458), (109, 9488), (128, 9533), (134, 9548),

Gene: Niblet_11 Start: 8034, Stop: 8288, Start Num: 61

Candidate Starts for Niblet_11:

(1, 7434), (5, 7593), (13, 7701), (31, 7905), (51, 7998), (53, 8016), (Start: 61 @8034 has 22 MA's), (87, 8058), (96, 8106), (120, 8178), (127, 8205),

Gene: Nicky22_11 Start: 8102, Stop: 8359, Start Num: 57

Candidate Starts for Nicky22_11:

(52, 8090), (Start: 57 @8102 has 37 MA's), (88, 8123), (127, 8279), (130, 8294), (138, 8330),

Gene: Niobe_11 Start: 8714, Stop: 9019, Start Num: 69

Candidate Starts for Niobe_11:

(18, 8444), (Start: 69 @8714 has 227 MA's), (86, 8756), (100, 8819), (116, 8870), (125, 8909),

Gene: Nitro_11 Start: 8737, Stop: 9042, Start Num: 69

Candidate Starts for Nitro_11:

(18, 8461), (Start: 69 @8737 has 227 MA's), (86, 8779), (89, 8797), (100, 8842), (125, 8932),

Gene: Nubia_13 Start: 10120, Stop: 10410, Start Num: 69

Candidate Starts for Nubia_13:

(Start: 63 @10108 has 7 MA's), (Start: 69 @10120 has 227 MA's), (78, 10144), (89, 10186), (97, 10219), (99, 10228), (102, 10246), (127, 10327),

Gene: OMalley_9 Start: 7261, Stop: 7548, Start Num: 69

Candidate Starts for OMalley_9:

(Start: 69 @7261 has 227 MA's), (97, 7360), (127, 7468), (140, 7540),

Gene: ObiToo_11 Start: 8917, Stop: 9225, Start Num: 69

Candidate Starts for ObiToo_11:

(Start: 69 @8917 has 227 MA's), (100, 9022), (101, 9034), (125, 9112),

Gene: Opie_10 Start: 7562, Stop: 7852, Start Num: 66

Candidate Starts for Opie_10:

(Start: 66 @7562 has 11 MA's), (84, 7598), (97, 7658), (127, 7754), (138, 7805),

Gene: Oppalora_10 Start: 7655, Stop: 7909, Start Num: 61

Candidate Starts for Oppalora_10:

(17, 7397), (21, 7421), (26, 7457), (30, 7505), (51, 7619), (Start: 61 @7655 has 22 MA's), (87, 7679), (96, 7727), (98, 7736), (111, 7781), (120, 7799), (127, 7826),

Gene: Orcanus_11 Start: 8038, Stop: 8292, Start Num: 61

Candidate Starts for Orcanus_11:

(31, 7909), (32, 7924), (51, 8002), (53, 8020), (Start: 61 @8038 has 22 MA's), (87, 8062), (118, 8176), (120, 8182), (128, 8212),

Gene: Origami_10 Start: 7008, Stop: 7286, Start Num: 69

Candidate Starts for Origami_10:

(Start: 69 @7008 has 227 MA's), (84, 7041), (86, 7050),

Gene: OurGirlNessie_9 Start: 7234, Stop: 7503, Start Num: 69
Candidate Starts for OurGirlNessie_9:
(Start: 69 @7234 has 227 MA's), (92, 7312), (97, 7333), (127, 7420),

Gene: Ouroboros_9 Start: 6453, Stop: 6743, Start Num: 69
Candidate Starts for Ouroboros_9:
(Start: 69 @6453 has 227 MA's), (74, 6465), (76, 6471), (79, 6483), (86, 6501), (88, 6504), (89, 6519), (91, 6528), (92, 6531), (97, 6552), (101, 6576), (114, 6618), (119, 6630), (124, 6654), (138, 6714),

Gene: Oxynfrius_13 Start: 10133, Stop: 10423, Start Num: 69
Candidate Starts for Oxynfrius_13:
(Start: 69 @10133 has 227 MA's), (78, 10157), (97, 10232), (99, 10241), (102, 10259), (127, 10340),

Gene: P1.1_9 Start: 6453, Stop: 6743, Start Num: 69
Candidate Starts for P1.1_9:
(Start: 69 @6453 has 227 MA's), (74, 6465), (76, 6471), (79, 6483), (86, 6501), (88, 6504), (89, 6519), (91, 6528), (92, 6531), (101, 6576), (119, 6630), (138, 6714),

Gene: P100.1_9 Start: 6443, Stop: 6733, Start Num: 69
Candidate Starts for P100.1_9:
(Start: 69 @6443 has 227 MA's), (74, 6455), (76, 6461), (79, 6473), (86, 6491), (88, 6494), (89, 6509), (91, 6518), (92, 6521), (97, 6542), (101, 6566), (114, 6608), (119, 6620), (124, 6644), (138, 6704),

Gene: P100A_9 Start: 6464, Stop: 6754, Start Num: 69
Candidate Starts for P100A_9:
(49, 6392), (65, 6458), (Start: 69 @6464 has 227 MA's), (74, 6476), (76, 6482), (79, 6494), (86, 6512), (88, 6515), (89, 6530), (91, 6539), (92, 6542), (97, 6563), (101, 6587), (114, 6629), (119, 6641), (124, 6665), (138, 6725),

Gene: P100D_9 Start: 6447, Stop: 6737, Start Num: 69
Candidate Starts for P100D_9:
(Start: 69 @6447 has 227 MA's), (74, 6459), (76, 6465), (79, 6477), (86, 6495), (88, 6498), (89, 6513), (91, 6522), (92, 6525), (101, 6570), (114, 6612), (119, 6624), (124, 6648),

Gene: P101A_9 Start: 6446, Stop: 6736, Start Num: 69
Candidate Starts for P101A_9:
(Start: 69 @6446 has 227 MA's), (74, 6458), (76, 6464), (79, 6476), (86, 6494), (88, 6497), (89, 6512), (91, 6521), (92, 6524), (97, 6545), (101, 6569), (114, 6611), (119, 6623), (124, 6647), (138, 6707),

Gene: P104A_9 Start: 6448, Stop: 6738, Start Num: 69
Candidate Starts for P104A_9:
(Start: 69 @6448 has 227 MA's), (74, 6460), (76, 6466), (79, 6478), (86, 6496), (88, 6499), (89, 6514), (91, 6523), (92, 6526), (101, 6571), (114, 6613), (119, 6625), (124, 6649), (138, 6709),

Gene: P104B_9 Start: 6452, Stop: 6742, Start Num: 69
Candidate Starts for P104B_9:
(Start: 69 @6452 has 227 MA's), (74, 6464), (76, 6470), (79, 6482), (86, 6500), (88, 6503), (89, 6518), (91, 6527), (92, 6530), (97, 6551), (101, 6575), (114, 6617), (119, 6629),

Gene: P105_9 Start: 6442, Stop: 6732, Start Num: 69
Candidate Starts for P105_9:

(Start: 69 @6442 has 227 MA's), (74, 6454), (76, 6460), (79, 6472), (86, 6490), (88, 6493), (89, 6508), (91, 6517), (92, 6520), (97, 6541), (101, 6565), (114, 6607), (119, 6619), (124, 6643), (138, 6703),

Gene: P106A_9 Start: 6470, Stop: 6760, Start Num: 69

Candidate Starts for P106A_9:

(Start: 69 @6470 has 227 MA's), (74, 6482), (76, 6488), (79, 6500), (86, 6518), (88, 6521), (89, 6536), (91, 6545), (92, 6548), (101, 6593), (138, 6731),

Gene: P106C_9 Start: 6470, Stop: 6760, Start Num: 69

Candidate Starts for P106C_9:

(Start: 69 @6470 has 227 MA's), (74, 6482), (76, 6488), (79, 6500), (86, 6518), (88, 6521), (89, 6536), (91, 6545), (92, 6548), (101, 6593), (138, 6731),

Gene: P106I_9 Start: 6470, Stop: 6760, Start Num: 69

Candidate Starts for P106I_9:

(Start: 69 @6470 has 227 MA's), (74, 6482), (76, 6488), (79, 6500), (86, 6518), (88, 6521), (89, 6536), (91, 6545), (92, 6548), (101, 6593), (138, 6731),

Gene: P106L_9 Start: 6470, Stop: 6760, Start Num: 69

Candidate Starts for P106L_9:

(Start: 69 @6470 has 227 MA's), (74, 6482), (76, 6488), (79, 6500), (86, 6518), (88, 6521), (89, 6536), (91, 6545), (92, 6548), (101, 6593), (138, 6731),

Gene: P106M_9 Start: 6470, Stop: 6760, Start Num: 69

Candidate Starts for P106M_9:

(Start: 69 @6470 has 227 MA's), (74, 6482), (76, 6488), (79, 6500), (86, 6518), (88, 6521), (89, 6536), (91, 6545), (92, 6548), (101, 6593), (138, 6731),

Gene: P107A_9 Start: 6456, Stop: 6746, Start Num: 69

Candidate Starts for P107A_9:

(Start: 69 @6456 has 227 MA's), (74, 6468), (76, 6474), (79, 6486), (86, 6504), (88, 6507), (89, 6522), (91, 6531), (92, 6534), (97, 6555), (101, 6579), (114, 6621), (117, 6627), (119, 6633), (124, 6657), (138, 6717),

Gene: P107C_9 Start: 6452, Stop: 6742, Start Num: 69

Candidate Starts for P107C_9:

(Start: 69 @6452 has 227 MA's), (74, 6464), (76, 6470), (79, 6482), (86, 6500), (88, 6503), (89, 6518), (91, 6527), (92, 6530), (101, 6575), (114, 6617), (119, 6629), (138, 6713),

Gene: P108C_9 Start: 6456, Stop: 6746, Start Num: 69

Candidate Starts for P108C_9:

(Start: 69 @6456 has 227 MA's), (74, 6468), (76, 6474), (79, 6486), (86, 6504), (88, 6507), (89, 6522), (91, 6531), (92, 6534), (101, 6579), (114, 6621), (119, 6633),

Gene: P14.4_9 Start: 6447, Stop: 6737, Start Num: 69

Candidate Starts for P14.4_9:

(Start: 69 @6447 has 227 MA's), (74, 6459), (76, 6465), (79, 6477), (86, 6495), (88, 6498), (89, 6513), (91, 6522), (92, 6525), (101, 6570), (114, 6612), (119, 6624),

Gene: P9.1_9 Start: 6445, Stop: 6735, Start Num: 69

Candidate Starts for P9.1_9:

(Start: 69 @6445 has 227 MA's), (74, 6457), (76, 6463), (79, 6475), (86, 6493), (88, 6496), (89, 6511), (91, 6520), (92, 6523), (101, 6568), (114, 6610), (119, 6622),

Gene: PA6_9 Start: 6455, Stop: 6745, Start Num: 69

Candidate Starts for PA6_9:

(Start: 69 @6455 has 227 MA's), (74, 6467), (76, 6473), (79, 6485), (86, 6503), (88, 6506), (89, 6521), (91, 6530), (92, 6533), (97, 6554), (114, 6620), (119, 6632), (122, 6647), (124, 6656), (138, 6716),

Gene: PAD20_9 Start: 6453, Stop: 6743, Start Num: 69

Candidate Starts for PAD20_9:

(Start: 69 @6453 has 227 MA's), (74, 6465), (76, 6471), (79, 6483), (86, 6501), (88, 6504), (89, 6519), (91, 6528), (92, 6531), (101, 6576), (114, 6618), (119, 6630), (138, 6714),

Gene: PAS50_9 Start: 6450, Stop: 6740, Start Num: 69

Candidate Starts for PAS50_9:

(Start: 69 @6450 has 227 MA's), (74, 6462), (76, 6468), (79, 6480), (86, 6498), (88, 6501), (89, 6516), (91, 6525), (92, 6528), (101, 6573), (114, 6615), (119, 6627), (124, 6651),

Gene: PHL010M04_09 Start: 6444, Stop: 6734, Start Num: 69

Candidate Starts for PHL010M04_09:

(65, 6438), (Start: 69 @6444 has 227 MA's), (74, 6456), (76, 6462), (79, 6474), (86, 6492), (88, 6495), (89, 6510), (91, 6519), (92, 6522), (101, 6567), (114, 6609), (119, 6621), (124, 6645), (138, 6705),

Gene: PHL037M02_09 Start: 6444, Stop: 6740, Start Num: 65

Candidate Starts for PHL037M02_09:

(65, 6444), (Start: 69 @6450 has 227 MA's), (74, 6462), (76, 6468), (86, 6498), (88, 6501), (89, 6516), (91, 6525), (92, 6528), (114, 6615), (119, 6627), (138, 6711),

Gene: PHL060L00_09 Start: 6443, Stop: 6733, Start Num: 69

Candidate Starts for PHL060L00_09:

(Start: 69 @6443 has 227 MA's), (74, 6455), (76, 6461), (79, 6473), (86, 6491), (88, 6494), (89, 6509), (91, 6518), (92, 6521), (101, 6566), (114, 6608), (119, 6620), (124, 6644),

Gene: PHL067M10_09 Start: 6447, Stop: 6737, Start Num: 69

Candidate Starts for PHL067M10_09:

(Start: 69 @6447 has 227 MA's), (74, 6459), (76, 6465), (79, 6477), (86, 6495), (88, 6498), (89, 6513), (91, 6522), (92, 6525), (101, 6570), (114, 6612), (119, 6624), (124, 6648),

Gene: PHL071N05_09 Start: 6449, Stop: 6739, Start Num: 69

Candidate Starts for PHL071N05_09:

(Start: 69 @6449 has 227 MA's), (74, 6461), (76, 6467), (79, 6479), (86, 6497), (88, 6500), (89, 6515), (91, 6524), (92, 6527), (101, 6572), (114, 6614), (119, 6626),

Gene: PHL111M01_09 Start: 6453, Stop: 6743, Start Num: 69

Candidate Starts for PHL111M01_09:

(Start: 69 @6453 has 227 MA's), (74, 6465), (76, 6471), (79, 6483), (86, 6501), (88, 6504), (89, 6519), (91, 6528), (92, 6531), (101, 6576), (114, 6618), (119, 6630),

Gene: PHL112N00_09 Start: 6453, Stop: 6743, Start Num: 69

Candidate Starts for PHL112N00_09:

(Start: 69 @6453 has 227 MA's), (74, 6465), (76, 6471), (79, 6483), (86, 6501), (88, 6504), (89, 6519), (91, 6528), (92, 6531), (101, 6576), (114, 6618), (119, 6630), (122, 6645), (124, 6654),

Gene: PHL113M01_09 Start: 6453, Stop: 6743, Start Num: 69

Candidate Starts for PHL113M01_09:

(Start: 69 @6453 has 227 MA's), (74, 6465), (76, 6471), (78, 6477), (79, 6483), (86, 6501), (88, 6504), (89, 6519), (91, 6528), (92, 6531), (101, 6576), (114, 6618), (119, 6630), (124, 6654), (138, 6714),

Gene: PHL114L00_09 Start: 6452, Stop: 6742, Start Num: 69

Candidate Starts for PHL114L00_09:

(Start: 69 @6452 has 227 MA's), (74, 6464), (76, 6470), (86, 6500), (89, 6518), (91, 6527), (92, 6530), (97, 6551), (101, 6575), (114, 6617), (119, 6629), (124, 6653), (138, 6713),

Gene: PandaPo_11 Start: 8710, Stop: 9018, Start Num: 68

Candidate Starts for PandaPo_11:

(Start: 68 @8710 has 6 MA's), (89, 8773), (121, 8890), (125, 8908), (142, 8998),

Gene: Parada_15 Start: 9335, Stop: 9613, Start Num: 69

Candidate Starts for Parada_15:

(Start: 67 @9332 has 3 MA's), (Start: 69 @9335 has 227 MA's), (92, 9413), (100, 9446), (101, 9458), (109, 9488), (128, 9533), (134, 9548),

Gene: PartyCup_13 Start: 10175, Stop: 10444, Start Num: 69

Candidate Starts for PartyCup_13:

(Start: 63 @10163 has 7 MA's), (Start: 69 @10175 has 227 MA's), (76, 10193), (88, 10226), (97, 10274), (115, 10319), (127, 10361),

Gene: Pelletreau_12 Start: 8244, Stop: 8498, Start Num: 61

Candidate Starts for Pelletreau_12:

(31, 8115), (51, 8208), (53, 8226), (Start: 61 @8244 has 22 MA's), (87, 8268), (118, 8382), (120, 8388), (128, 8418),

Gene: Percival_10 Start: 8884, Stop: 9174, Start Num: 69

Candidate Starts for Percival_10:

(Start: 69 @8884 has 227 MA's), (92, 8959), (97, 8980), (127, 9073),

Gene: PhigPhack_10 Start: 7683, Stop: 7940, Start Num: 57

Candidate Starts for PhigPhack_10:

(52, 7671), (Start: 57 @7683 has 37 MA's), (88, 7704), (126, 7857), (127, 7860), (130, 7875), (138, 7911),

Gene: Phives_12 Start: 9819, Stop: 10124, Start Num: 69

Candidate Starts for Phives_12:

(18, 9549), (Start: 69 @9819 has 227 MA's), (86, 9861), (101, 9936),

Gene: PhluffyCoco_10 Start: 7655, Stop: 7909, Start Num: 61

Candidate Starts for PhluffyCoco_10:

(51, 7619), (Start: 61 @7655 has 22 MA's), (87, 7679), (95, 7724), (98, 7736), (111, 7781), (115, 7787), (120, 7799), (127, 7826),

Gene: Pimento_16 Start: 9539, Stop: 9817, Start Num: 69

Candidate Starts for Pimento_16:

(14, 9194), (Start: 67 @9536 has 3 MA's), (Start: 69 @9539 has 227 MA's), (92, 9617), (100, 9650), (101, 9662), (109, 9692), (128, 9737), (134, 9752),

Gene: PinkFriday_9 Start: 7264, Stop: 7551, Start Num: 69

Candidate Starts for PinkFriday_9:

(Start: 69 @7264 has 227 MA's), (88, 7315), (97, 7363), (127, 7471), (140, 7543),

Gene: Pirate_9 Start: 6445, Stop: 6735, Start Num: 69

Candidate Starts for Pirate_9:

(Start: 69 @6445 has 227 MA's), (74, 6457), (76, 6463), (79, 6475), (86, 6493), (88, 6496), (89, 6511), (91, 6520), (92, 6523), (101, 6568), (114, 6610), (119, 6622),

Gene: PitaDog_9 Start: 7234, Stop: 7503, Start Num: 69

Candidate Starts for PitaDog_9:

(Start: 69 @7234 has 227 MA's), (97, 7333), (115, 7378), (127, 7420),

Gene: Pixelle_11 Start: 8762, Stop: 9067, Start Num: 69

Candidate Starts for Pixelle_11:

(18, 8492), (Start: 69 @8762 has 227 MA's), (86, 8804), (101, 8879),

Gene: Potatoes_13 Start: 10152, Stop: 10421, Start Num: 69

Candidate Starts for Potatoes_13:

(Start: 69 @10152 has 227 MA's), (88, 10203), (89, 10218), (97, 10251),

Gene: Powerpuff_11 Start: 8785, Stop: 9093, Start Num: 69

Candidate Starts for Powerpuff_11:

(Start: 69 @8785 has 227 MA's), (86, 8827), (116, 8941),

Gene: Preamble_9 Start: 7244, Stop: 7513, Start Num: 69

Candidate Starts for Preamble_9:

(Start: 69 @7244 has 227 MA's), (97, 7343), (115, 7388), (127, 7430), (133, 7457),

Gene: Procrass1_9 Start: 6452, Stop: 6742, Start Num: 69

Candidate Starts for Procrass1_9:

(Start: 69 @6452 has 227 MA's), (74, 6464), (76, 6470), (79, 6482), (86, 6500), (88, 6503), (89, 6518), (91, 6527), (92, 6530), (101, 6575), (114, 6617), (119, 6629), (124, 6653), (138, 6713),

Gene: Pterodactyl_9 Start: 7235, Stop: 7504, Start Num: 69

Candidate Starts for Pterodactyl_9:

(Start: 69 @7235 has 227 MA's), (97, 7334), (115, 7379), (127, 7421),

Gene: Pumancara_9 Start: 7263, Stop: 7550, Start Num: 69

Candidate Starts for Pumancara_9:

(Start: 69 @7263 has 227 MA's), (88, 7314), (97, 7362), (127, 7470), (140, 7542),

Gene: Pumpkins_11 Start: 8839, Stop: 9144, Start Num: 69

Candidate Starts for Pumpkins_11:

(Start: 69 @8839 has 227 MA's), (86, 8881), (100, 8944), (125, 9034),

Gene: Puppies_9 Start: 6807, Stop: 7094, Start Num: 64

Candidate Starts for Puppies_9:

(40, 6720), (58, 6783), (Start: 64 @6807 has 6 MA's), (97, 6909), (109, 6954), (111, 6960), (128, 6999), (138, 7047), (142, 7080),

Gene: QueenBey_9 Start: 6446, Stop: 6736, Start Num: 69

Candidate Starts for QueenBey_9:

(Start: 69 @6446 has 227 MA's), (76, 6464), (79, 6476), (86, 6494), (88, 6497), (89, 6512), (91, 6521), (92, 6524), (101, 6569), (114, 6611), (119, 6623), (124, 6647), (138, 6707),

Gene: Quenya_11 Start: 7781, Stop: 8044, Start Num: 57

Candidate Starts for Quenya_11:

(43, 7724), (Start: 57 @7781 has 37 MA's), (88, 7808), (89, 7823), (127, 7964),

Gene: RAP15_13 Start: 10158, Stop: 10427, Start Num: 69

Candidate Starts for RAP15_13:

(Start: 69 @10158 has 227 MA's), (88, 10209), (89, 10224), (97, 10257),

Gene: Rattail_10 Start: 7706, Stop: 7960, Start Num: 61

Candidate Starts for Rattail_10:

(17, 7448), (21, 7472), (26, 7508), (30, 7556), (50, 7664), (51, 7670), (Start: 61 @7706 has 22 MA's), (87, 7730), (96, 7778), (98, 7787), (111, 7832), (120, 7850), (127, 7877),

Gene: RayTheFireFly_11 Start: 7613, Stop: 7882, Start Num: 71

Candidate Starts for RayTheFireFly_11:

(Start: 71 @7613 has 5 MA's), (92, 7679), (109, 7742), (111, 7748), (127, 7784), (131, 7802),

Gene: RcigaStruga_13 Start: 10141, Stop: 10431, Start Num: 69

Candidate Starts for RcigaStruga_13:

(4, 9655), (10, 9742), (22, 9880), (Start: 69 @10141 has 227 MA's), (78, 10165), (97, 10240), (102, 10267), (127, 10348),

Gene: RedFox_10 Start: 7655, Stop: 7909, Start Num: 61

Candidate Starts for RedFox_10:

(51, 7619), (Start: 61 @7655 has 22 MA's), (87, 7679), (95, 7724), (98, 7736), (111, 7781), (115, 7787), (120, 7799), (127, 7826),

Gene: Reedo_11 Start: 8786, Stop: 9091, Start Num: 69

Candidate Starts for Reedo_11:

(Start: 69 @8786 has 227 MA's), (86, 8828), (93, 8861), (142, 9071),

Gene: Rem711_16 Start: 10853, Stop: 11095, Start Num: 77

Candidate Starts for Rem711_16:

(47, 10766), (Start: 77 @10853 has 2 MA's), (94, 10904), (129, 11021),

Gene: Renna12_11 Start: 7855, Stop: 8109, Start Num: 61

Candidate Starts for Renna12_11:

(Start: 61 @7855 has 22 MA's), (87, 7879), (95, 7924), (98, 7936), (111, 7981), (115, 7987), (120, 7999), (127, 8026),

Gene: Reyja_11 Start: 7295, Stop: 7579, Start Num: 63

Candidate Starts for Reyja_11:

(51, 7244), (Start: 63 @7295 has 7 MA's), (92, 7370),

Gene: Rileysaurus_9 Start: 6441, Stop: 6731, Start Num: 69

Candidate Starts for Rileysaurus_9:

(Start: 69 @6441 has 227 MA's), (74, 6453), (76, 6459), (79, 6471), (86, 6489), (89, 6507), (91, 6516), (92, 6519), (101, 6564), (114, 6606), (119, 6618), (124, 6642),

Gene: Riovina_9 Start: 7261, Stop: 7548, Start Num: 69

Candidate Starts for Riovina_9:

(Start: 69 @7261 has 227 MA's), (97, 7360), (127, 7468), (140, 7540),

Gene: Riverdale_13 Start: 10089, Stop: 10358, Start Num: 69
Candidate Starts for Riverdale_13:
(Start: 69 @10089 has 227 MA's), (88, 10140), (89, 10155), (97, 10188),

Gene: RockScotty_11 Start: 8267, Stop: 8554, Start Num: 69
Candidate Starts for RockScotty_11:
(Start: 69 @8267 has 227 MA's), (110, 8417), (127, 8453), (129, 8459),

Gene: Rollins_9 Start: 7485, Stop: 7748, Start Num: 57
Candidate Starts for Rollins_9:
(43, 7428), (Start: 57 @7485 has 37 MA's), (82, 7500), (88, 7515), (115, 7632), (132, 7692), (139, 7722),

Gene: Rozby_13 Start: 10089, Stop: 10358, Start Num: 69
Candidate Starts for Rozby_13:
(Start: 69 @10089 has 227 MA's), (88, 10140), (89, 10155), (97, 10188),

Gene: Ruthy_12 Start: 8144, Stop: 8419, Start Num: 69
Candidate Starts for Ruthy_12:
(27, 7916), (Start: 69 @8144 has 227 MA's), (92, 8219), (128, 8339),

Gene: SKKY_9 Start: 6477, Stop: 6767, Start Num: 69
Candidate Starts for SKKY_9:
(Start: 69 @6477 has 227 MA's), (74, 6489), (76, 6495), (79, 6507), (86, 6525), (88, 6528), (89, 6543), (91, 6552), (92, 6555), (101, 6600),

Gene: Sabourin_11 Start: 8176, Stop: 8463, Start Num: 69
Candidate Starts for Sabourin_11:
(Start: 69 @8176 has 227 MA's), (97, 8272), (129, 8368),

Gene: SansAfet_10 Start: 7665, Stop: 7922, Start Num: 57
Candidate Starts for SansAfet_10:
(52, 7653), (Start: 57 @7665 has 37 MA's), (88, 7686), (126, 7839), (127, 7842), (130, 7857), (138, 7893),

Gene: Santhid_10 Start: 7160, Stop: 7447, Start Num: 63
Candidate Starts for Santhid_10:
(51, 7109), (Start: 63 @7160 has 7 MA's), (92, 7238),

Gene: SarBear_10 Start: 7625, Stop: 7888, Start Num: 56
Candidate Starts for SarBear_10:
(52, 7616), (Start: 56 @7625 has 5 MA's), (88, 7652), (127, 7808), (130, 7823),

Gene: Savage2526_13 Start: 10152, Stop: 10421, Start Num: 69
Candidate Starts for Savage2526_13:
(Start: 69 @10152 has 227 MA's), (88, 10203), (89, 10218), (97, 10251),

Gene: Schaffner_11 Start: 8830, Stop: 9132, Start Num: 69
Candidate Starts for Schaffner_11:
(Start: 69 @8830 has 227 MA's), (86, 8872), (100, 8935), (116, 8986), (125, 9022),

Gene: Schnabeltier_10 Start: 7548, Stop: 7838, Start Num: 66
Candidate Starts for Schnabeltier_10:

(Start: 66 @7548 has 11 MA's), (88, 7596), (97, 7644), (109, 7698), (134, 7770), (142, 7824),

Gene: Scuttle_13 Start: 10158, Stop: 10427, Start Num: 69

Candidate Starts for Scuttle_13:

(Start: 69 @10158 has 227 MA's), (88, 10209), (89, 10224), (97, 10257),

Gene: Sergei_9 Start: 7263, Stop: 7550, Start Num: 69

Candidate Starts for Sergei_9:

(Start: 69 @7263 has 227 MA's), (93, 7344), (97, 7362), (127, 7470), (140, 7542),

Gene: ShakeltOph_10 Start: 7008, Stop: 7289, Start Num: 69

Candidate Starts for ShakeltOph_10:

(Start: 69 @7008 has 227 MA's), (84, 7041), (86, 7050), (116, 7164), (139, 7245),

Gene: Shambre1_11 Start: 8534, Stop: 8782, Start Num: 80

Candidate Starts for Shambre1_11:

(Start: 80 @8534 has 1 MA's), (96, 8600), (111, 8654),

Gene: Shen_12 Start: 8245, Stop: 8499, Start Num: 61

Candidate Starts for Shen_12:

(31, 8116), (51, 8209), (53, 8227), (Start: 61 @8245 has 22 MA's), (87, 8269), (118, 8383), (120, 8389), (128, 8419),

Gene: Simpson_12 Start: 8735, Stop: 9040, Start Num: 69

Candidate Starts for Simpson_12:

(Start: 69 @8735 has 227 MA's), (86, 8777),

Gene: Skelbel_11 Start: 8714, Stop: 9019, Start Num: 69

Candidate Starts for Skelbel_11:

(18, 8444), (Start: 69 @8714 has 227 MA's), (86, 8756), (100, 8819), (116, 8870), (125, 8909),

Gene: Skylord_9 Start: 7425, Stop: 7688, Start Num: 57

Candidate Starts for Skylord_9:

(43, 7368), (Start: 57 @7425 has 37 MA's), (82, 7440), (88, 7455), (115, 7572), (132, 7632), (139, 7662),

Gene: Slay_10 Start: 8101, Stop: 8364, Start Num: 56

Candidate Starts for Slay_10:

(52, 8092), (Start: 56 @8101 has 5 MA's), (88, 8128), (127, 8284), (130, 8299),

Gene: Snek_11 Start: 7822, Stop: 8127, Start Num: 68

Candidate Starts for Snek_11:

(Start: 68 @7822 has 6 MA's), (86, 7861), (112, 7972), (139, 8077), (142, 8107),

Gene: Softsoap_10 Start: 7654, Stop: 7911, Start Num: 57

Candidate Starts for Softsoap_10:

(52, 7642), (Start: 57 @7654 has 37 MA's), (127, 7831), (138, 7882),

Gene: Solea_11 Start: 8040, Stop: 8297, Start Num: 57

Candidate Starts for Solea_11:

(52, 8028), (Start: 57 @8040 has 37 MA's), (88, 8061), (127, 8217), (130, 8232), (138, 8268),

Gene: Solid_9 Start: 6453, Stop: 6743, Start Num: 69

Candidate Starts for Solid_9:

(Start: 69 @6453 has 227 MA's), (74, 6465), (76, 6471), (79, 6483), (86, 6501), (88, 6504), (89, 6519), (91, 6528), (92, 6531), (101, 6576), (114, 6618), (119, 6630), (124, 6654), (138, 6714),

Gene: Soondubu_10 Start: 8626, Stop: 8931, Start Num: 69

Candidate Starts for Soondubu_10:

(Start: 69 @8626 has 227 MA's), (84, 8662), (86, 8671), (121, 8806), (129, 8836),

Gene: Sooty_11 Start: 8177, Stop: 8464, Start Num: 69

Candidate Starts for Sooty_11:

(Start: 69 @8177 has 227 MA's), (97, 8273), (129, 8369),

Gene: SpecialK_11 Start: 8174, Stop: 8461, Start Num: 69

Candidate Starts for SpecialK_11:

(Start: 69 @8174 has 227 MA's), (110, 8324), (127, 8360), (129, 8366),

Gene: Sprinklemunch_11 Start: 7920, Stop: 8195, Start Num: 69

Candidate Starts for Sprinklemunch_11:

(27, 7692), (Start: 69 @7920 has 227 MA's), (108, 8067), (128, 8115), (129, 8118),

Gene: Stormborn_9 Start: 6448, Stop: 6738, Start Num: 69

Candidate Starts for Stormborn_9:

(Start: 69 @6448 has 227 MA's), (74, 6460), (76, 6466), (79, 6478), (86, 6496), (88, 6499), (89, 6514), (91, 6523), (92, 6526), (101, 6571), (114, 6613), (119, 6625), (124, 6649), (138, 6709),

Gene: StuartMinion_10 Start: 7681, Stop: 7935, Start Num: 61

Candidate Starts for StuartMinion_10:

(15, 7405), (20, 7444), (Start: 61 @7681 has 22 MA's), (96, 7753), (111, 7807), (118, 7819), (120, 7825), (127, 7852),

Gene: Stuu_11 Start: 8267, Stop: 8554, Start Num: 69

Candidate Starts for Stuu_11:

(Start: 69 @8267 has 227 MA's), (110, 8417), (127, 8453), (129, 8459),

Gene: SuMoo_9 Start: 7231, Stop: 7518, Start Num: 69

Candidate Starts for SuMoo_9:

(Start: 69 @7231 has 227 MA's), (139, 7465), (142, 7495),

Gene: Subaru_11 Start: 8714, Stop: 9019, Start Num: 69

Candidate Starts for Subaru_11:

(18, 8444), (Start: 69 @8714 has 227 MA's), (86, 8756), (100, 8819), (116, 8870), (125, 8909),

Gene: Sue2_11 Start: 8727, Stop: 9035, Start Num: 68

Candidate Starts for Sue2_11:

(Start: 68 @8727 has 6 MA's), (86, 8772), (132, 8958),

Gene: Supakev_9 Start: 7263, Stop: 7550, Start Num: 69

Candidate Starts for Supakev_9:

(Start: 69 @7263 has 227 MA's), (88, 7314), (97, 7362), (127, 7470),

Gene: SuperHands_11 Start: 9056, Stop: 9346, Start Num: 69

Candidate Starts for SuperHands_11:

(Start: 69 @9056 has 227 MA's), (92, 9131), (97, 9152), (127, 9245),

Gene: Supernova_9 Start: 6445, Stop: 6735, Start Num: 69

Candidate Starts for Supernova_9:

(Start: 69 @6445 has 227 MA's), (74, 6457), (76, 6463), (86, 6493), (88, 6496), (89, 6511), (91, 6520), (92, 6523), (97, 6544), (101, 6568), (114, 6610), (119, 6622), (124, 6646), (138, 6706),

Gene: Suppi_13 Start: 10175, Stop: 10444, Start Num: 69

Candidate Starts for Suppi_13:

(Start: 63 @10163 has 7 MA's), (Start: 69 @10175 has 227 MA's), (76, 10193), (92, 10253), (97, 10274), (127, 10361),

Gene: Swervy_10 Start: 7625, Stop: 7888, Start Num: 56

Candidate Starts for Swervy_10:

(52, 7616), (Start: 56 @7625 has 5 MA's), (88, 7652), (127, 7808), (130, 7823),

Gene: Tallboi_11 Start: 8748, Stop: 9050, Start Num: 69

Candidate Starts for Tallboi_11:

(18, 8478), (Start: 69 @8748 has 227 MA's), (86, 8790), (100, 8853), (116, 8904),

Gene: TaronosaurusRx_10 Start: 7561, Stop: 7851, Start Num: 66

Candidate Starts for TaronosaurusRx_10:

(Start: 66 @7561 has 11 MA's), (84, 7597), (97, 7657), (109, 7711), (134, 7783), (138, 7804),

Gene: Tarzan_10 Start: 7151, Stop: 7435, Start Num: 63

Candidate Starts for Tarzan_10:

(25, 6932), (51, 7100), (Start: 63 @7151 has 7 MA's), (89, 7214),

Gene: TattModd_13 Start: 10152, Stop: 10421, Start Num: 69

Candidate Starts for TattModd_13:

(Start: 69 @10152 has 227 MA's), (88, 10203), (89, 10218), (97, 10251),

Gene: Tbone_11 Start: 8728, Stop: 9036, Start Num: 69

Candidate Starts for Tbone_11:

(Start: 69 @8728 has 227 MA's), (86, 8770), (89, 8788), (100, 8833), (116, 8884),

Gene: Temper16_9 Start: 7263, Stop: 7550, Start Num: 69

Candidate Starts for Temper16_9:

(Start: 69 @7263 has 227 MA's), (93, 7344), (97, 7362), (127, 7470), (140, 7542),

Gene: TforTroy_11 Start: 8862, Stop: 9164, Start Num: 69

Candidate Starts for TforTroy_11:

(Start: 69 @8862 has 227 MA's), (86, 8904), (100, 8967), (116, 9018), (125, 9054),

Gene: ThursdayNight_10 Start: 7234, Stop: 7530, Start Num: 68

Candidate Starts for ThursdayNight_10:

(Start: 68 @7234 has 6 MA's), (142, 7516),

Gene: Tian_11 Start: 8759, Stop: 9064, Start Num: 69

Candidate Starts for Tian_11:

(18, 8489), (Start: 69 @8759 has 227 MA's), (86, 8801), (101, 8876),

Gene: Toad24_12 Start: 8245, Stop: 8499, Start Num: 61

Candidate Starts for Toad24_12:

(31, 8116), (32, 8131), (53, 8227), (Start: 61 @8245 has 22 MA's), (87, 8269), (118, 8383), (120, 8389), (128, 8419),

Gene: Trine_9 Start: 6815, Stop: 7090, Start Num: 64

Candidate Starts for Trine_9:

(19, 6551), (29, 6641), (37, 6716), (41, 6728), (Start: 64 @6815 has 6 MA's), (97, 6911), (111, 6956), (128, 6995), (129, 6998),

Gene: Tuck_12 Start: 9774, Stop: 10079, Start Num: 69

Candidate Starts for Tuck_12:

(Start: 69 @9774 has 227 MA's), (86, 9816), (100, 9879), (101, 9891), (125, 9969),

Gene: TukTuk_10 Start: 7628, Stop: 7948, Start Num: 57

Candidate Starts for TukTuk_10:

(52, 7616), (Start: 57 @7628 has 37 MA's), (88, 7712), (127, 7868), (130, 7883),

Gene: Turab_11 Start: 8743, Stop: 9048, Start Num: 69

Candidate Starts for Turab_11:

(18, 8473), (Start: 69 @8743 has 227 MA's), (86, 8785), (100, 8848), (125, 8938),

Gene: Tutumahutu_11 Start: 8785, Stop: 9093, Start Num: 69

Candidate Starts for Tutumahutu_11:

(Start: 69 @8785 has 227 MA's), (86, 8827), (116, 8941),

Gene: Tweety19_11 Start: 7821, Stop: 8126, Start Num: 68

Candidate Starts for Tweety19_11:

(Start: 68 @7821 has 6 MA's), (86, 7860), (112, 7971), (139, 8076), (142, 8106),

Gene: Upyo_9 Start: 6827, Stop: 7114, Start Num: 62

Candidate Starts for Upyo_9:

(3, 6347), (11, 6449), (12, 6473), (40, 6746), (48, 6767), (Start: 62 @6827 has 3 MA's), (Start: 64 @6833 has 6 MA's), (75, 6854), (111, 6980), (127, 7016), (128, 7019), (140, 7088), (142, 7100), (143, 7103),

Gene: Urla_9 Start: 7290, Stop: 7559, Start Num: 69

Candidate Starts for Urla_9:

(Start: 69 @7290 has 227 MA's), (97, 7389), (98, 7395), (127, 7476),

Gene: UtzChips_9 Start: 7926, Stop: 8207, Start Num: 69

Candidate Starts for UtzChips_9:

(Start: 69 @7926 has 227 MA's), (101, 8040),

Gene: VResidence_11 Start: 8797, Stop: 9105, Start Num: 69

Candidate Starts for VResidence_11:

(18, 8530), (36, 8698), (Start: 69 @8797 has 227 MA's), (142, 9088),

Gene: Vallejo_13 Start: 10090, Stop: 10359, Start Num: 69

Candidate Starts for Vallejo_13:

(Start: 69 @10090 has 227 MA's), (88, 10141), (89, 10156), (97, 10189),

Gene: Vitas_9 Start: 7425, Stop: 7688, Start Num: 57

Candidate Starts for Vitas_9:

(43, 7368), (Start: 57 @7425 has 37 MA's), (82, 7440), (88, 7455), (115, 7572), (132, 7632), (139, 7662),

Gene: VroomVroom_10 Start: 7020, Stop: 7301, Start Num: 69

Candidate Starts for VroomVroom_10:

(Start: 69 @7020 has 227 MA's), (84, 7053), (86, 7062), (89, 7080), (116, 7176),

Gene: Vulture_9 Start: 7261, Stop: 7548, Start Num: 69

Candidate Starts for Vulture_9:

(Start: 69 @7261 has 227 MA's), (97, 7360), (127, 7468),

Gene: WST1_11 Start: 8173, Stop: 8415, Start Num: 70

Candidate Starts for WST1_11:

(Start: 67 @8167 has 3 MA's), (70, 8173), (109, 8284), (144, 8401),

Gene: Warda_11 Start: 8731, Stop: 9039, Start Num: 69

Candidate Starts for Warda_11:

(Start: 69 @8731 has 227 MA's), (86, 8773), (89, 8791), (116, 8887),

Gene: Wawa_13 Start: 10127, Stop: 10396, Start Num: 69

Candidate Starts for Wawa_13:

(Start: 69 @10127 has 227 MA's), (88, 10178), (89, 10193), (97, 10226),

Gene: Wayne_13 Start: 10221, Stop: 10490, Start Num: 69

Candidate Starts for Wayne_13:

(Start: 63 @10209 has 7 MA's), (Start: 69 @10221 has 227 MA's), (76, 10239), (92, 10299), (97, 10320), (127, 10407),

Gene: Weirdo19_11 Start: 8017, Stop: 8271, Start Num: 77

Candidate Starts for Weirdo19_11:

(38, 7900), (47, 7924), (55, 7957), (Start: 77 @8017 has 2 MA's), (83, 8035), (123, 8179),

Gene: Westrich_12 Start: 8233, Stop: 8487, Start Num: 61

Candidate Starts for Westrich_12:

(31, 8104), (32, 8119), (51, 8197), (53, 8215), (Start: 61 @8233 has 22 MA's), (87, 8257), (118, 8371), (120, 8377), (128, 8407),

Gene: WheatThin_15 Start: 9332, Stop: 9613, Start Num: 67

Candidate Starts for WheatThin_15:

(Start: 67 @9332 has 3 MA's), (Start: 69 @9335 has 227 MA's), (92, 9413), (100, 9446), (101, 9458), (109, 9488), (128, 9533), (134, 9548),

Gene: Widow_9 Start: 6798, Stop: 7085, Start Num: 64

Candidate Starts for Widow_9:

(58, 6774), (Start: 64 @6798 has 6 MA's), (97, 6900), (109, 6945), (111, 6951), (128, 6990), (138, 7038), (142, 7071),

Gene: Wildwest_12 Start: 9644, Stop: 9949, Start Num: 69

Candidate Starts for Wildwest_12:

(Start: 69 @9644 has 227 MA's), (79, 9668), (86, 9686), (142, 9929), (145, 9938),

Gene: Wizzo_9 Start: 6457, Stop: 6747, Start Num: 69

Candidate Starts for Wizzo_9:

(Start: 69 @6457 has 227 MA's), (74, 6469), (76, 6475), (79, 6487), (86, 6505), (88, 6508), (89, 6523), (91, 6532), (92, 6535), (114, 6622), (119, 6634),

Gene: WonderBoy_9 Start: 7243, Stop: 7512, Start Num: 69

Candidate Starts for WonderBoy_9:

(Start: 69 @7243 has 227 MA's), (97, 7342), (127, 7429),

Gene: Yang_11 Start: 8832, Stop: 9134, Start Num: 69

Candidate Starts for Yang_11:

(Start: 69 @8832 has 227 MA's), (86, 8874), (100, 8937), (116, 8988), (125, 9024),

Gene: YesChef_11 Start: 8785, Stop: 9093, Start Num: 69

Candidate Starts for YesChef_11:

(Start: 69 @8785 has 227 MA's), (86, 8827), (116, 8941),

Gene: ZAYM_10 Start: 7554, Stop: 7844, Start Num: 66

Candidate Starts for ZAYM_10:

(Start: 66 @7554 has 11 MA's), (97, 7650), (109, 7704), (134, 7776), (138, 7797), (142, 7830),

Gene: Zeta1847_9 Start: 7022, Stop: 7303, Start Num: 69

Candidate Starts for Zeta1847_9:

(36, 6935), (Start: 69 @7022 has 227 MA's), (84, 7049),

Gene: Zhuangyuan_12 Start: 8412, Stop: 8666, Start Num: 61

Candidate Starts for Zhuangyuan_12:

(17, 8154), (24, 8205), (31, 8283), (51, 8376), (53, 8394), (Start: 61 @8412 has 22 MA's), (84, 8424), (115, 8544), (127, 8583), (135, 8622),

Gene: Zixiang_11 Start: 8034, Stop: 8288, Start Num: 61

Candidate Starts for Zixiang_11:

(1, 7434), (5, 7593), (13, 7701), (31, 7905), (51, 7998), (53, 8016), (Start: 61 @8034 has 22 MA's), (87, 8058), (96, 8106), (120, 8178), (127, 8205),

Gene: Zodiariah_11 Start: 7870, Stop: 8145, Start Num: 69

Candidate Starts for Zodiariah_11:

(Start: 69 @7870 has 227 MA's), (108, 8017), (109, 8020), (128, 8065), (129, 8068),

Gene: Zorro_13 Start: 10106, Stop: 10375, Start Num: 69

Candidate Starts for Zorro_13:

(Start: 69 @10106 has 227 MA's), (88, 10157), (89, 10172), (97, 10205),