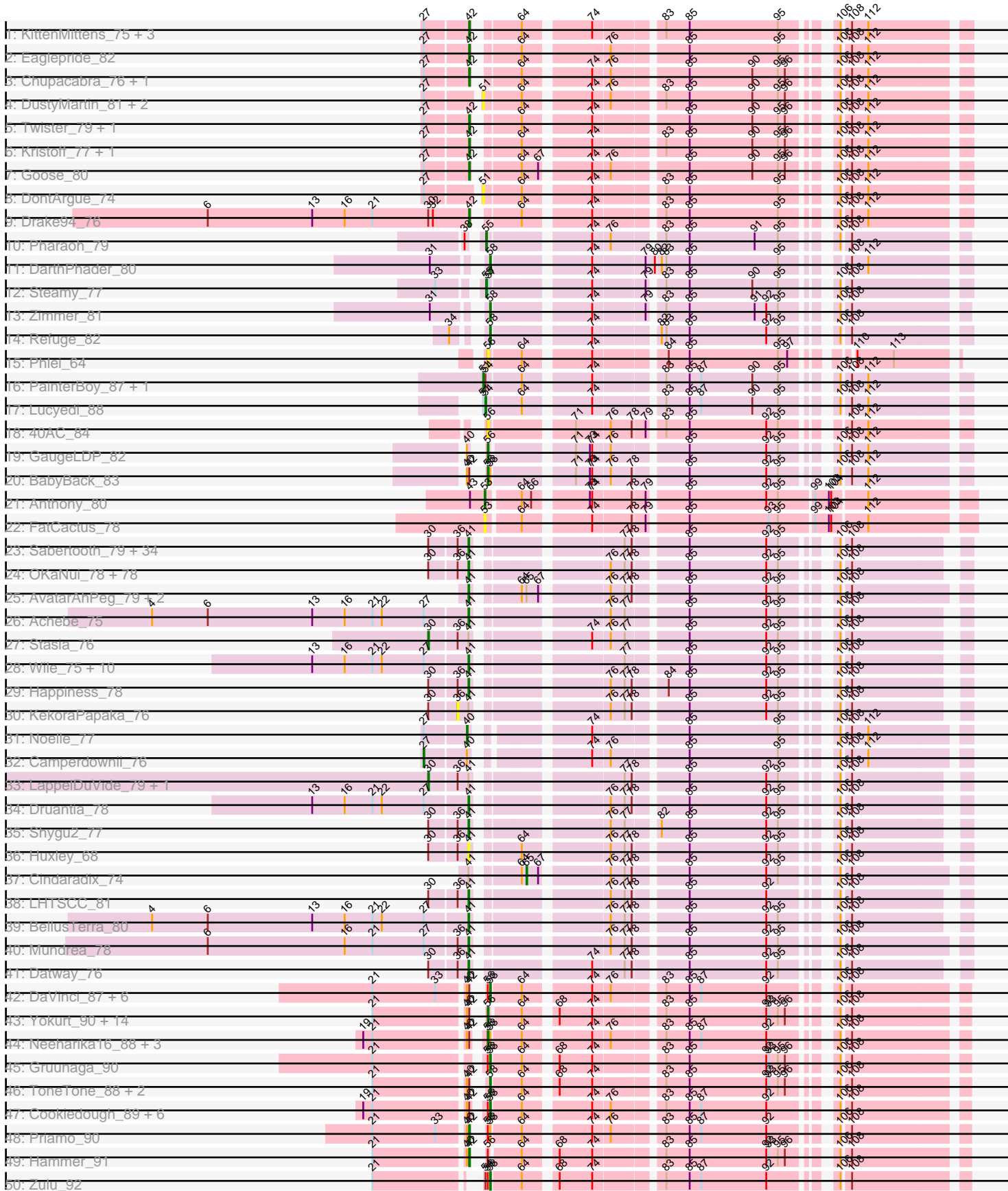
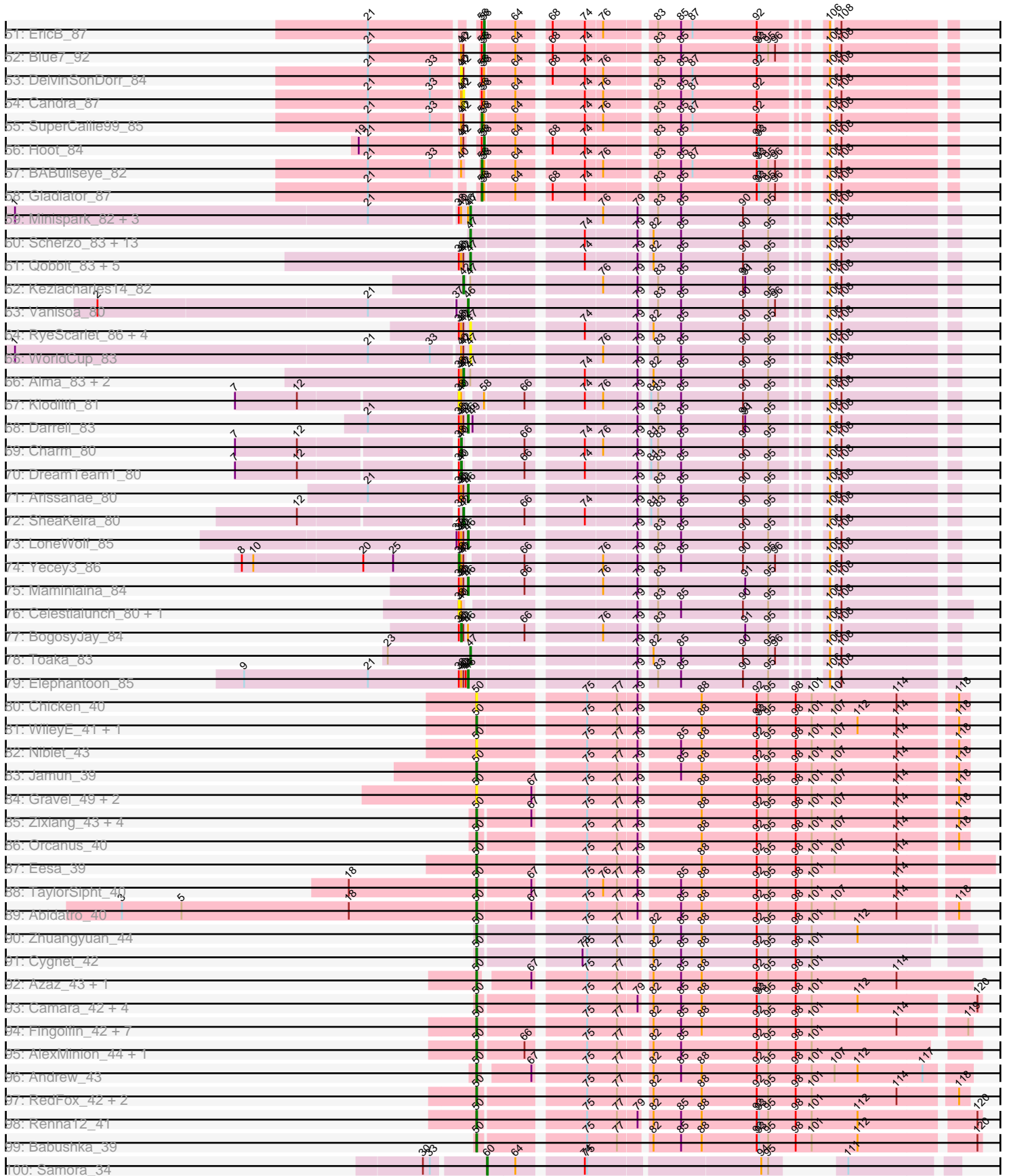


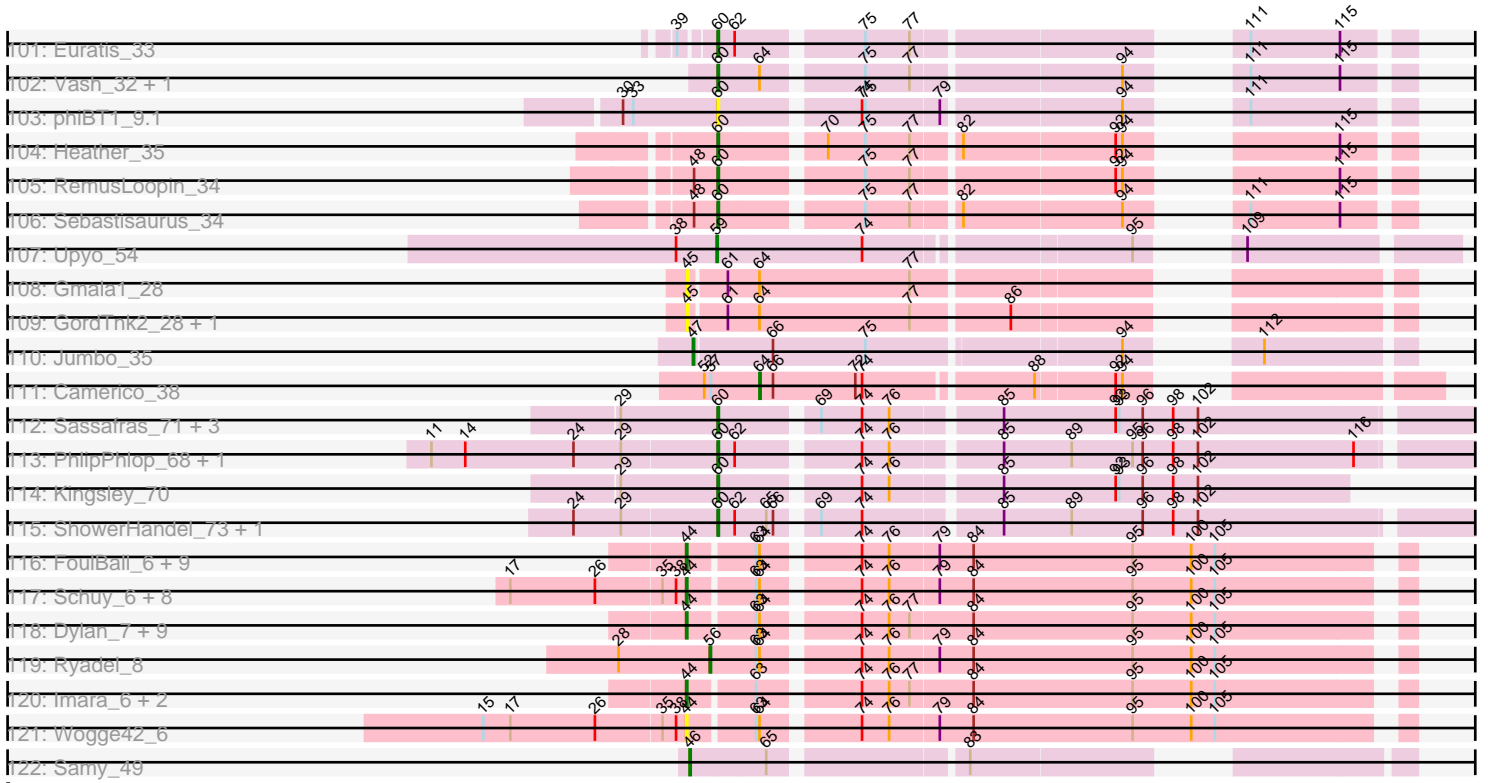
Pham 294351



Pham 294351



Pham 294351



Note: Tracks are now grouped by subcluster and scaled. Switching in subcluster is indicated by changes in track color. Track scale is now set by default to display the region 30 bp upstream of start 1 to 30 bp downstream of the last possible start. If this default region is judged to be packed too tightly with annotated starts, the track will be further scaled to only show that region of the ORF with annotated starts. This action will be indicated by adding "Zoomed" to the title. For starts, yellow indicates the location of called starts comprised solely of Glimmer/GeneMark auto-annotations, green indicates the location of called starts with at least 1 manual gene annotation.

Pham 294351 Report

This analysis was run 04/18/26 on database version 643.

WARNING: Pham size does not match number of genes in report. Either unphamerated genes have been added (by you) or starterator has removed genes due to invalid start codon.

Pham number 294351 has 372 members, 59 are drafts.

Phages represented in each track:

- Track 1 : KittenMittens_75, Poompha_76, Severus_77, PeaceMeal1_76
- Track 2 : Eaglepride_82
- Track 3 : Chupacabra_76, OKCentral2016_78
- Track 4 : DustyMartin_81, Rowdy_81, Shapes_81
- Track 5 : Twister_79, WalterMcMickey_78
- Track 6 : Kristoff_77, Rebeuca_80
- Track 7 : Goose_80
- Track 8 : DontArgue_74
- Track 9 : Drake94_76
- Track 10 : Pharaoh_79
- Track 11 : DarthPhader_80
- Track 12 : Steamy_77
- Track 13 : Zimmer_81
- Track 14 : Refuge_82
- Track 15 : Phlei_64
- Track 16 : PainterBoy_87, EagleEye_89
- Track 17 : Lucyedi_88
- Track 18 : 40AC_84
- Track 19 : GaugeLDP_82
- Track 20 : BabyBack_83
- Track 21 : Anthony_80
- Track 22 : FatCactus_78
- Track 23 : Sabertooth_79, Millski_78, Cintron_79, Bartimeaus_79, Pumbaa_79, Lorenzo_79, YoSam321_79, TinaFeyge_77, Albee_79, TiroTheta9_78, Jaykayelowell_76, Polymorphads_80, Abdiel_78, Broseidon_79, Thanksgivukkah_78, Baby16_79, Holli_78, Flux_80, Sparxx_80, Roosevelt_77, Nyxis_78, Florean_79, Pipcraft_75, Xena_75, Eros_79, MeeZee_78, Blackmoor_78, Deano_76, Connomayer_79, HamSlice_75, Citius_79, Morrow_81, Lunsford_79, Medusa_78, Annyong_78
- Track 24 : OKaNui_78, Eurydice_80, Clarenza_78, JoongJeon_78, Mazhar510_79, Burger_77, Iracema64_79, LochMonster_80, Houdini22_78, Avle17_79, Melvin_81, Bruiser_78, Relief_78, SeniorClean_80, Wander_79, Ruin_79, SteMason_75, Phelipe_80, Nemo27_78, RockieBear_76, Bombshell_79, Eris_78, Kamy_78,

Obama12_80, Kingmustik0402_79, Romney_78, Cocoaberry_79, PeterPeter_79, Nebs_80, SheldonCooper_79, Alberto7_80, Cerulean_81, CentreCat_79, Kyee_79, Scamp_79, Lemur_79, Tinybot_78, LittleB_79, Chaph_79, Ulysses_78, Kratark_78, DirtyDunning_78, Caelakin_77, Skipitt_78, Iceman_77, Phacado_79, ChampagnePapi_82, Spino_78, LittleGuy_79, Dhanush_79, Taquarus_78, Commander_77, JetBlade_80, Rosa24_75, Sultana_79, Kremtemulon_76, Ohfah_80, Maverick_78, Eagle_78, Maxo_81, Koan_76, NorthStar_76, Eapen_79, Shaka_77, Peaches_77, KFPoly_78, Palestino_78, BangNhom_76, ICleared_78, Wilbur_79, TroyPia_80, Arturo_76, TygerBlood_79, Phighter1804_79, Koreni_78, Gadost_79, NotAPhaseMom_78, Phontbonne_79, Funston_78

- Track 25 : AvatarAhPeg_79, Stink_79, Miramae_79
- Track 26 : Achebe_75
- Track 27 : Stasia_76
- Track 28 : Wile_75, Morpher26_76, Katalie136_76, AbbysRanger_76, Perplexer_76, Backyardigan_74, Badger_75, Wizard007_76, Bumblebee11_75, Cici_76, PetiteSangsue_76
- Track 29 : Happiness_78
- Track 30 : KekoraPapaka_76
- Track 31 : Noelle_77
- Track 32 : Camperdownii_76
- Track 33 : LappelDuVide_79, BubbleTrouble_78
- Track 34 : Druantia_78
- Track 35 : Shygu2_77
- Track 36 : Huxley_68
- Track 37 : Cindaradix_74
- Track 38 : LHTSCC_81
- Track 39 : BellusTerra_80
- Track 40 : Mundrea_78
- Track 41 : Datway_76
- Track 42 : DaVinci_87, McFly_89, Kazan_90, Chartreuse_88, Isiphiwo_85, VohminGhazi_89, SmellyB_89
- Track 43 : Yokurt_90, Indra_94, Rifter_91, Wiks_90, Koko_92, Artemis2UCLA_90, Temprado_92, CloudWang3_91, Hexamo_90, Jeffabunny_79, Roksolana_91, Zaka_91, Helmet_93, BennyP_90, Garak_92
- Track 44 : Neeharika16_88, Pmask_88, Jordennis_87, Dorothea_89
- Track 45 : Gruunaga_90
- Track 46 : ToneTone_88, BlessJoy_91, Tucker_91
- Track 47 : Cookiedough_89, Polyphemus_82, SuperAwesome_89, GreedyLawyer_82, Newrala_88, JewelBug_81, Kipper29_89
- Track 48 : Priamo_90
- Track 49 : Hammer_91
- Track 50 : Zulu_92
- Track 51 : EricB_87
- Track 52 : Blue7_92
- Track 53 : DelvinSonDorr_84
- Track 54 : Candra_87
- Track 55 : SuperCallie99_85
- Track 56 : Hoot_84
- Track 57 : BABullseye_82
- Track 58 : Gladiator_87
- Track 59 : Minispark_82, Bellris_82, CogOmlette_82, Rahalelujah_84
- Track 60 : Scherzo_83, Fayely_83, Tubs_85, Sachima_81, Pioneer_85, Phaeder_85, Aliter_78, Beemo_85, Phonnegut_85, Myxus_85, HortumSL17_86,

Onglai_83, Jiawan_82, Catalina_87
• Track 61 : Qobbit_83, Spouty_83, ExplosioNervosa_83, Ayanochan_83, Conquerage_83, Priya_83
• Track 62 : Keziacharles14_82
• Track 63 : Vanisoa_80
• Track 64 : RyeScarlet_86, Holecx_83, Lilleskat_82, Hanray_83, EdogawaKiddo_83
• Track 65 : WorldCup_83
• Track 66 : Alma_83, Eidsmoe_83, EmyBug_82
• Track 67 : Klodlith_81
• Track 68 : Darrell_83
• Track 69 : Charm_80
• Track 70 : DreamTeam1_80
• Track 71 : Arissanae_80
• Track 72 : SheaKeira_80
• Track 73 : LoneWolf_85
• Track 74 : Yecey3_86
• Track 75 : Maminiaina_84
• Track 76 : Celestialunch_80, MegTheThird_81
• Track 77 : BogosyJay_84
• Track 78 : Toaka_83
• Track 79 : Elephantoon_85
• Track 80 : Chicken_40
• Track 81 : WileyE_41, Chickaboom_41
• Track 82 : Niblet_43
• Track 83 : Jamun_39
• Track 84 : Gravel_49, Pelletreau_49, Westrich_48
• Track 85 : Zixiang_43, Amanises_49, KendraB23_50, Shen_39, Toad24_42
• Track 86 : Orcanus_40
• Track 87 : Eesa_39
• Track 88 : TaylorSipht_40
• Track 89 : Abidatro_40
• Track 90 : Zhuangyuan_44
• Track 91 : Cygnet_42
• Track 92 : Azaz_43, Leona_41
• Track 93 : Camara_42, Amphitrite_42, AdoptaAdorbs_41, Glotell_43, KHumphrey_42
• Track 94 : Fingolfin_42, HamCheese_42, Laphuphu24k_41, DanHam62_42, AmiCi24_41, Juno112_41, Atlantica_42, Oppalora_41
• Track 95 : AlexMinion_44, StuartMinion_34
• Track 96 : Andrew_43
• Track 97 : RedFox_42, PhluffyCoco_42, Rattail_42
• Track 98 : Renna12_41
• Track 99 : Babushka_39
• Track 100 : Samora_34
• Track 101 : Euratis_33
• Track 102 : Vash_32, Lilbooboo_32
• Track 103 : phiBT1_9.1
• Track 104 : Heather_35
• Track 105 : RemusLoopin_34
• Track 106 : Sebastisaurus_34
• Track 107 : Upyo_54
• Track 108 : Gmala1_28
• Track 109 : GordTnk2_28, GordDuk1_28

- Track 110 : Jumbo_35
- Track 111 : Camerico_38
- Track 112 : Sassafras_71, RedBird_71, Inventum_68, Dorothy_71
- Track 113 : PhlipPhlop_68, EmiMonkey_66
- Track 114 : Kingsley_70
- Track 115 : ShowerHandel_73, ByChance_63
- Track 116 : FoulBall_6, Idergollasper_6, Familton_7, YoyoKar_6, SchoolBus_6, Zebo_6, KingPhillip3_6, JangDynasty_6, Blessica_6, Catdawg_6
- Track 117 : Schuy_6, Vorrps_6, MadKillah_6, Mori_6, Krili_6, Alkhayr_6, Murai_6, Shida_6, NiebruSaylor_6
- Track 118 : Dylan_7, Smooch_7, Zakhe101_7, Corndog_7, Ashwin_7, TelAviv_6, YungJamal_7, Bora_6, Firecracker_6, Wildflower_6
- Track 119 : Ryadel_8
- Track 120 : Imara_6, Vagabond_6, Winget_6
- Track 121 : Wogge42_6
- Track 122 : Samy_49

Summary of Final Annotations (See graph section above for start numbers):

The start number called the most often in the published annotations is 41, it was called in 133 of the 313 non-draft genes in the pham.

Genes that call this "Most Annotated" start:

- AbbysRanger_76, Abdiel_78, Achebe_75, Albee_79, Alberto7_80, Annyong_78, Arturo_76, AvatarAhPeg_79, Avle17_79, Baby16_79, Backyardigan_74, Badger_75, BangNhom_76, Bartimeaus_79, BellusTerra_80, Blackmoor_78, Bombshell_79, Broseidon_79, Bruiser_78, Bumblebee11_75, Burger_77, Caelakin_77, CentreCat_79, Cerulean_81, ChampagnePapi_82, Chaph_79, Cici_76, Cintron_79, Citius_79, Clarenza_78, Cocoaberry_79, Commander_77, Connomayer_79, Datway_76, Deano_76, Dhanush_79, DirtyDunning_78, Druantia_78, Eagle_78, Eapen_79, Eris_78, Eros_79, Eurydice_80, Floean_79, Flux_80, Funston_78, Gadost_79, HamSlice_75, Happiness_78, Holli_78, Houdini22_78, Huxley_68, ICleared_78, Iceman_77, Iracema64_79, Jaykayelowell_76, JetBlade_80, JoongJeon_78, KFPoly_78, Kampy_78, Katalie136_76, Kingmustik0402_79, Koan_76, Koreni_78, Kratark_78, Kremtemulon_76, Kyee_79, LHTSCC_81, Lemur_79, LittleB_79, LittleGuy_79, LochMonster_80, Lorenzo_79, Lunsford_79, Maverick_78, Maxo_81, Mazhar510_79, Medusa_78, MeeZee_78, Melvin_81, Millski_78, Miramae_79, Morpher26_76, Morrow_81, Mundrea_78, Nebs_80, Nemo27_78, NorthStar_76, NotAPhaseMom_78, Nyxis_78, OKaNui_78, Obama12_80, Ohfah_80, Palestino_78, Peaches_77, Perplexer_76, PeterPeter_79, PetiteSangsue_76, Phacado_79, Felipe_80, Phighter1804_79, Phontbonne_79, Pipcraft_75, Polymorphads_80, Pumbaa_79, Relief_78, RockieBear_76, Romney_78, Roosevelt_77, Rosa24_75, Ruin_79, Sabertooth_79, Scamp_79, SeniorClean_80, Shaka_77, SheldonCooper_79, Shygu2_77, Skipitt_78, Sparxx_80, Spino_78, SteMason_75, Stink_79, Sultana_79, Taquarus_78, Thanksgivukkah_78, TinaFeyge_77, Tinybot_78, TiroTheta9_78, TroyPia_80, TygerBlood_79, Ulysses_78, Wander_79, Wilbur_79, Wile_75, Wizard007_76, Xena_75, YoSam321_79,

Genes that have the "Most Annotated" start but do not call it:

- BubbleTrouble_78, Cindaradix_74, KekoraPapaka_76, LappelDuVide_79, Stasia_76,

Genes that do not have the "Most Annotated" start:

- 40AC_84, Abidatro_40, AdoptaAdorbs_41, AlexMinion_44, Aliter_78, Alkhayr_6, Alma_83, Amanises_49, AmiCi24_41, Amphitrite_42, Andrew_43, Anthony_80, Arissanae_80, Artemis2UCLA_90, Ashwin_7, Atlantica_42, Ayanochan_83, Azaz_43, BABullseye_82, Babushka_39, BabyBack_83, Beemo_85, Bellris_82, BennyP_90, BlessJoy_91, Blessica_6, Blue7_92, BogosyJay_84, Bora_6, ByChance_63, Camara_42, Camerico_38, Camperdownii_76, Candra_87, Catalina_87, Catdawg_6, Celestiallunch_80, Charm_80, Chartreuse_88, Chickaboom_41, Chicken_40, Chupacabra_76, CloudWang3_91, CogOmlette_82, Conquerage_83, Cookiedough_89, Corndog_7, Cygnet_42, DaVinci_87, DanHam62_42, Darrell_83, DARTHPhader_80, DelvinSonDorr_84, DontArgue_74, Dorothea_89, Dorothy_71, Drake94_76, DreamTeam1_80, DustyMartin_81, Dylan_7, EagleEye_89, Eaglepride_82, EdogawaKiddo_83, Eesa_39, Eidsmoe_83, Elephanto_85, EmiMonkey_66, EmyBug_82, EricB_87, Euratis_33, ExplosioNervosa_83, Familton_7, FatCactus_78, Fayely_83, Fingolfin_42, Firecracker_6, FoulBall_6, Garak_92, GaugeLDP_82, Gladiator_87, Glotell_43, Gmala1_28, Goose_80, GordDuk1_28, GordTnk2_28, Gravel_49, GreedyLawyer_82, Gruunaga_90, HamCheese_42, Hammer_91, Hanray_83, Heather_35, Helmet_93, Hexamo_90, Horex_83, Hoot_84, HortumSL17_86, Idergollasper_6, Imara_6, Indra_94, Inventum_68, Isiphiwo_85, Jamun_39, JangDynasty_6, Jeffabunny_79, JewelBug_81, Jiawan_82, Jordennis_87, Jumbo_35, Juno112_41, KHumphrey_42, Kazan_90, KendraB23_50, Keziacharles14_82, KingPhillip3_6, Kingsley_70, Kipper29_89, KittenMittens_75, Klodlith_81, Koko_92, Krili_6, Kristoff_77, Laphuphu24k_41, Leona_41, Lilbooboo_32, Lilleskat_82, LoneWolf_85, Lucyedi_88, MadKillah_6, Maminiaina_84, McFly_89, MegTheThird_81, Minispark_82, Mori_6, Murai_6, Myxus_85, Neeharika16_88, Newrala_88, Niblet_43, NiebruSaylor_6, Noelle_77, OKCentral2016_78, Onglai_83, Oppalora_41, Orcanus_40, PainterBoy_87, PeaceMeal1_76, Pelletreau_49, Phaeder_85, Pharaoh_79, Phlei_64, PhlipPhlop_68, PhluffyCoco_42, Phonnegut_85, Pioneer_85, Pmask_88, Polyphemus_82, Poompha_76, Priamo_90, Priya_83, Qobbit_83, Rahalelujah_84, Rattail_42, Rebeuca_80, RedBird_71, RedFox_42, Refuge_82, RemusLoopin_34, Renna12_41, Rifter_91, Roksolana_91, Rowdy_81, Ryadel_8, RyeScarlet_86, Sachima_81, Samora_34, Samy_49, Sassafras_71, Scherzo_83, SchoolBus_6, Schuy_6, Sebastisaurus_34, Severus_77, Shapes_81, SheaKeira_80, Shen_39, Shida_6, ShowerHandel_73, SmellyB_89, Smooch_7, Spouty_83, Steamy_77, StuartMinion_34, SuperAwesome_89, SuperCallie99_85, TaylorSipht_40, TelAviv_6, Temprado_92, Toad24_42, Toaka_83, ToneTone_88, Tubs_85, Tucker_91, Twister_79, Upyo_54, Vagabond_6, Vanisoa_80, Vash_32, VohminGhazi_89, Vorrrps_6, WalterMcMickey_78, Westrich_48, Wiks_90, Wildflower_6, WileyE_41, Winget_6, Wogge42_6, WorldCup_83, Yecey3_86, Yokurt_90, YoyoKar_6, YungJamal_7, Zaka_91, Zakhe101_7, Zebo_6, Zhuangyuan_44, Zimmer_81, Zixiang_43, Zulu_92, phiBT1_9.1,

Summary by start number:

Start 27:

- Found in 33 of 372 (8.9%) of genes in pham
- Manual Annotations of this start: 1 of 313
- Called 3.0% of time when present
- Phage (with cluster) where this start called: Camperdownii_76 (A4),

Start 30:

- Found in 126 of 372 (33.9%) of genes in pham
- Manual Annotations of this start: 3 of 313
- Called 2.4% of time when present
- Phage (with cluster) where this start called: BubbleTrouble_78 (A4), LappelDuVide_79 (A4), Stasia_76 (A4),

Start 36:

- Found in 124 of 372 (33.3%) of genes in pham
- No Manual Annotations of this start.
- Called 0.8% of time when present
- Phage (with cluster) where this start called: KekoraPapaka_76 (A4),

Start 38:

- Found in 43 of 372 (11.6%) of genes in pham
- Manual Annotations of this start: 1 of 313
- Called 9.3% of time when present
- Phage (with cluster) where this start called: Celestiallunch_80 (A9), Klodlith_81 (A9), MegTheThird_81 (A9), Yecey3_86 (A9),

Start 40:

- Found in 79 of 372 (21.2%) of genes in pham
- Manual Annotations of this start: 4 of 313
- Called 6.3% of time when present
- Phage (with cluster) where this start called: BogosyJay_84 (A9), Charm_80 (A9), DelvinSonDorr_84 (A6), DreamTeam1_80 (A9), Noelle_77 (A4),

Start 41:

- Found in 142 of 372 (38.2%) of genes in pham
- Manual Annotations of this start: 133 of 313
- Called 96.5% of time when present
- Phage (with cluster) where this start called: AbbysRanger_76 (A4), Abdiel_78 (A4), Achebe_75 (A4), Albee_79 (A4), Alberto7_80 (A4), Annyong_78 (A4), Arturo_76 (A4), AvatarAhPeg_79 (A4), Avle17_79 (A4), Baby16_79 (A4), Backyardigan_74 (A4), Badger_75 (A4), BangNhom_76 (A4), Bartimeaus_79 (A4), BellusTerra_80 (A4), Blackmoor_78 (A4), Bombshell_79 (A4), Broseidon_79 (A4), Bruiser_78 (A4), Bumblebee11_75 (A4), Burger_77 (A4), Caelakin_77 (A4), CentreCat_79 (A4), Cerulean_81 (A4), ChampagnePapi_82 (A4), Chaph_79 (A4), Cici_76 (A4), Cintron_79 (A4), Citius_79 (A4), Clarenza_78 (A4), Cocoaberry_79 (A4), Commander_77 (A4), Connomayer_79 (A4), Datway_76 (A4), Deano_76 (A4), Dhanush_79 (A4), DirtyDunning_78 (A4), Druantia_78 (A4), Eagle_78 (A4), Eapen_79 (A4), Eris_78 (A4), Eros_79 (A4), Eurydice_80 (A4), Florean_79 (A4), Flux_80 (A4), Funston_78 (A4), Gadost_79 (A4), HamSlice_75 (A4), Happiness_78 (A4), Holli_78 (A4), Houdini22_78 (A4), Huxley_68 (A4), ICleared_78 (A4), Iceman_77 (A4), Iracema64_79 (A4), Jaykayelowell_76 (A4), JetBlade_80 (A4), JoongJeon_78 (A4), KFPoly_78 (A4), Kamy_78 (A4), Katalie136_76 (A4), Kingmustik0402_79 (A4), Koan_76 (A4), Koreni_78 (A4), Kratak_78 (A4), Kremtemulon_76 (A4), Kyee_79 (A4), LHTSCC_81 (A4), Lemur_79 (A4), LittleB_79 (A4), LittleGuy_79 (A4), LochMonster_80 (A4), Lorenzo_79 (A4), Lunsford_79 (A4), Maverick_78 (A4), Maxo_81 (A4), Mazhar510_79 (A4), Medusa_78 (A4), MeeZee_78 (A4), Melvin_81 (A4), Millski_78 (A4), Miramae_79 (A4), Morpher26_76 (A4), Morrow_81 (A4), Mundrea_78 (A4), Nebs_80 (A4), Nemo27_78 (A4), NorthStar_76

(A4), NotAPhaseMom_78 (A4), Nyxis_78 (A4), OKaNui_78 (A4), Obama12_80 (A4), Ohfah_80 (A4), Palestino_78 (A4), Peaches_77 (A4), Perplexer_76 (A4), PeterPeter_79 (A4), PetiteSangsue_76 (A4), Phacado_79 (A4), Phelipe_80 (A4), Phighter1804_79 (A4), Phontbonne_79 (A4), Pipcraft_75 (A4), Polymorphads_80 (A4), Pumbaa_79 (A4), Relief_78 (A4), RockieBear_76 (A4), Romney_78 (A4), Roosevelt_77 (A4), Rosa24_75 (A4), Ruin_79 (A4), Sabertooth_79 (A4), Scamp_79 (A4), SenorClean_80 (A4), Shaka_77 (A4), SheldonCooper_79 (A4), Shygu2_77 (A4), Skipitt_78 (A4), Sparxx_80 (A4), Spino_78 (A4), SteMason_75 (A4), Stink_79 (A4), Sultana_79 (A4), Taquarus_78 (A4), Thanksgivukkah_78 (A4), TinaFeyge_77 (A4), Tinybot_78 (A4), TiroTheta9_78 (A4), TroyPia_80 (A4), TygerBlood_79 (A4), Ulysses_78 (A4), Wander_79 (A4), Wilbur_79 (A4), Wile_75 (A4), Wizard007_76 (A4), Xena_75 (A4), YoSam321_79 (A4),

Start 42:

- Found in 81 of 372 (21.8%) of genes in pham
- Manual Annotations of this start: 20 of 313
- Called 25.9% of time when present
- Phage (with cluster) where this start called: Alma_83 (A9), Candra_87 (A6), Chupacabra_76 (A10), Drake94_76 (A10), Eaglepride_82 (A10), Eidsmoe_83 (A9), EmyBug_82 (A9), Goose_80 (A10), Hammer_91 (A6), Keziacharles14_82 (A9), KittenMittens_75 (A10), Kristoff_77 (A10), OKCentral2016_78 (A10), PeaceMeal1_76 (A10), Poompha_76 (A10), Priamo_90 (A6), Rebeuca_80 (A10), Severus_77 (A10), SheaKeira_80 (A9), Twister_79 (A10), WalterMcMickey_78 (A10),

Start 44:

- Found in 34 of 372 (9.1%) of genes in pham
- Manual Annotations of this start: 29 of 313
- Called 97.1% of time when present
- Phage (with cluster) where this start called: Alkhayr_6 (O), Ashwin_7 (O), Blessica_6 (O), Bora_6 (O), Catdawg_6 (O), Corndog_7 (O), Dylan_7 (O), Familton_7 (O), Firecracker_6 (O), FoulBall_6 (O), Idergollasper_6 (O), Imara_6 (O), JangDynasty_6 (O), KingPhillip3_6 (O), Krili_6 (O), MadKillah_6 (O), Mori_6 (O), Murai_6 (O), NiebruSaylor_6 (O), SchoolBus_6 (O), Schuy_6 (O), Shida_6 (O), Smooch_7 (O), TelAviv_6 (O), Vagabond_6 (O), Vorrps_6 (O), Wildflower_6 (O), Winget_6 (O), Wogge42_6 (O), YoyoKar_6 (O), YungJamal_7 (O), Zakhe101_7 (O), Zebo_6 (O),

Start 45:

- Found in 3 of 372 (0.8%) of genes in pham
- No Manual Annotations of this start.
- Called 100.0% of time when present
- Phage (with cluster) where this start called: Gmala1_28 (DF1), GordDuk1_28 (DF1), GordTnk2_28 (DF1),

Start 46:

- Found in 12 of 372 (3.2%) of genes in pham
- Manual Annotations of this start: 7 of 313
- Called 58.3% of time when present
- Phage (with cluster) where this start called: Arissanee_80 (A9), Darrell_83 (A9), Elephantoon_85 (A9), LoneWolf_85 (A9), Maminiaina_84 (A9), Samy_49 (singleton), Vanisoa_80 (A9),

Start 47:

- Found in 36 of 372 (9.7%) of genes in pham

- Manual Annotations of this start: 19 of 313
- Called 88.9% of time when present
- Phage (with cluster) where this start called: Aliter_78 (A9), Ayanochan_83 (A9), Beemo_85 (A9), Bellris_82 (A9), Catalina_87 (A9), CogOmlette_82 (A9), Conquerage_83 (A9), EdogawaKiddo_83 (A9), ExplosioNervosa_83 (A9), Fayely_83 (A9), Hanray_83 (A9), Horex_83 (A9), HortumSL17_86 (A9), Jiawan_82 (A9), Jumbo_35 (DF3), Lilleskat_82 (A9), Minispark_82 (A9), Myxus_85 (A9), Onglai_83 (A9), Phaeder_85 (A9), Phonnegut_85 (A9), Pioneer_85 (A9), Priya_83 (A9), Qobbit_83 (A9), Rahalelujah_84 (A9), RyeScarlet_86 (A9), Sachima_81 (A9), Scherzo_83 (A9), Spouty_83 (A9), Toaka_83 (A9), Tubs_85 (A9), WorldCup_83 (A9),

Start 50:

- Found in 42 of 372 (11.3%) of genes in pham
- Manual Annotations of this start: 24 of 313
- Called 100.0% of time when present
- Phage (with cluster) where this start called: Abidatro_40 (AS1), AdoptaAdorbs_41 (AS3), AlexMinion_44 (AS3), Amanises_49 (AS1), AmiCi24_41 (AS3), Amphitrite_42 (AS3), Andrew_43 (AS3), Atlantica_42 (AS3), Azaz_43 (AS3), Babushka_39 (AS3), Camara_42 (AS3), Chickaboom_41 (AS1), Chicken_40 (AS1), Cygnet_42 (AS2), DanHam62_42 (AS3), Eesa_39 (AS1), Fingolfin_42 (AS3), Glotell_43 (AS3), Gravel_49 (AS1), HamCheese_42 (AS3), Jamun_39 (AS1), Juno112_41 (AS3), KHumphrey_42 (AS3), KendraB23_50 (AS1), Laphuphu24k_41 (AS3), Leona_41 (AS3), Niblet_43 (AS1), Oppalora_41 (AS3), Orcanus_40 (AS1), Pelletreau_49 (AS1), PhluffyCoco_42 (AS3), Rattail_42 (AS3), RedFox_42 (AS3), Renna12_41 (AS3), Shen_39 (AS1), StuartMinion_34 (AS3), TaylorSipht_40 (AS1), Toad24_42 (AS1), Westrich_48 (AS1), WileyE_41 (AS1), Zhuangyuan_44 (AS2), Zixiang_43 (AS1),

Start 51:

- Found in 7 of 372 (1.9%) of genes in pham
- Manual Annotations of this start: 2 of 313
- Called 85.7% of time when present
- Phage (with cluster) where this start called: DontArgue_74 (A10), DustyMartin_81 (A10), EagleEye_89 (A16), PainterBoy_87 (A16), Rowdy_81 (A10), Shapes_81 (A10),

Start 53:

- Found in 2 of 372 (0.5%) of genes in pham
- Manual Annotations of this start: 1 of 313
- Called 100.0% of time when present
- Phage (with cluster) where this start called: Anthony_80 (A20), FatCactus_78 (A20),

Start 54:

- Found in 4 of 372 (1.1%) of genes in pham
- Manual Annotations of this start: 1 of 313
- Called 25.0% of time when present
- Phage (with cluster) where this start called: Lucyedi_88 (A16),

Start 55:

- Found in 2 of 372 (0.5%) of genes in pham
- Manual Annotations of this start: 2 of 313
- Called 100.0% of time when present
- Phage (with cluster) where this start called: Pharaoh_79 (A12), Steamy_77 (A12),

Start 56:

- Found in 50 of 372 (13.4%) of genes in pham
- Manual Annotations of this start: 23 of 313
- Called 54.0% of time when present
- Phage (with cluster) where this start called: 40AC_84 (A17), Artemis2UCLA_90 (A6), BABullseye_82 (A6), BabyBack_83 (A2), BennyP_90 (A6), CloudWang3_91 (A6), Dorothea_89 (A6), Garak_92 (A6), GaugeLDP_82 (A2), Gladiator_87 (A6), Helmet_93 (A6), Hexamo_90 (A6), Indra_94 (A6), Jeffabunny_79 (A6), Jordennis_87 (A6), Koko_92 (A6), Neeharika16_88 (A6), Phlei_64 (A13), Pmask_88 (A6), Rifter_91 (A6), Roksolana_91 (A6), Ryadel_8 (O), SuperCallie99_85 (A6), Temprado_92 (A6), Wiks_90 (A6), Yokurt_90 (A6), Zaka_91 (A6),

Start 58:

- Found in 37 of 372 (9.9%) of genes in pham
- Manual Annotations of this start: 25 of 313
- Called 67.6% of time when present
- Phage (with cluster) where this start called: BlessJoy_91 (A6), Blue7_92 (A6), Chartreuse_88 (A6), Cookiedough_89 (A6), DaVinci_87 (A6), DarthPhader_80 (A12), EricB_87 (A6), GreedyLawyer_82 (A6), Gruunaga_90 (A6), Hoot_84 (A6), Isiphiwo_85 (A6), JewelBug_81 (A6), Kazan_90 (A6), Kipper29_89 (A6), McFly_89 (A6), Newrala_88 (A6), Polyphemus_82 (A6), Refuge_82 (A12), SmellyB_89 (A6), SuperAwesome_89 (A6), ToneTone_88 (A6), Tucker_91 (A6), VohminGhazi_89 (A6), Zimmer_81 (A12), Zulu_92 (A6),

Start 59:

- Found in 1 of 372 (0.3%) of genes in pham
- Manual Annotations of this start: 1 of 313
- Called 100.0% of time when present
- Phage (with cluster) where this start called: Upyo_54 (CD),

Start 60:

- Found in 17 of 372 (4.6%) of genes in pham
- Manual Annotations of this start: 15 of 313
- Called 100.0% of time when present
- Phage (with cluster) where this start called: ByChance_63 (F1), Dorothy_71 (F1), EmiMonkey_66 (F1), Euratis_33 (BB1), Heather_35 (BB2), Inventum_68 (F1), Kingsley_70 (F1), Lilbooboo_32 (BB1), PhilipPhlop_68 (F1), RedBird_71 (F1), RemusLoopin_34 (BB2), Samora_34 (BB1), Sassafras_71 (F1), Sebastisaurus_34 (BB2), ShowerHandel_73 (F1), Vash_32 (BB1), phiBT1_9.1 (BB1),

Start 64:

- Found in 114 of 372 (30.6%) of genes in pham
- Manual Annotations of this start: 1 of 313
- Called 0.9% of time when present
- Phage (with cluster) where this start called: Camerico_38 (DF4),

Start 65:

- Found in 7 of 372 (1.9%) of genes in pham
- Manual Annotations of this start: 1 of 313
- Called 14.3% of time when present
- Phage (with cluster) where this start called: Cindaradix_74 (A4),

Summary by clusters:

There are 22 clusters represented in this pham: singleton, A17, A16, A10, A13, A12, DF4, DF1, DF3, A2, A4, A6, A9, BB2, BB1, AS3, AS2, AS1, O, CD, A20, F1,

Info for manual annotations of cluster A10:

- Start number 42 was manually annotated 13 times for cluster A10.

Info for manual annotations of cluster A12:

- Start number 55 was manually annotated 2 times for cluster A12.
- Start number 58 was manually annotated 3 times for cluster A12.

Info for manual annotations of cluster A16:

- Start number 51 was manually annotated 2 times for cluster A16.
- Start number 54 was manually annotated 1 time for cluster A16.

Info for manual annotations of cluster A2:

- Start number 56 was manually annotated 2 times for cluster A2.

Info for manual annotations of cluster A20:

- Start number 53 was manually annotated 1 time for cluster A20.

Info for manual annotations of cluster A4:

- Start number 27 was manually annotated 1 time for cluster A4.
- Start number 30 was manually annotated 3 times for cluster A4.
- Start number 40 was manually annotated 1 time for cluster A4.
- Start number 41 was manually annotated 133 times for cluster A4.
- Start number 65 was manually annotated 1 time for cluster A4.

Info for manual annotations of cluster A6:

- Start number 42 was manually annotated 2 times for cluster A6.
- Start number 56 was manually annotated 20 times for cluster A6.
- Start number 58 was manually annotated 22 times for cluster A6.

Info for manual annotations of cluster A9:

- Start number 38 was manually annotated 1 time for cluster A9.
- Start number 40 was manually annotated 3 times for cluster A9.
- Start number 42 was manually annotated 5 times for cluster A9.
- Start number 46 was manually annotated 6 times for cluster A9.
- Start number 47 was manually annotated 18 times for cluster A9.

Info for manual annotations of cluster AS1:

- Start number 50 was manually annotated 8 times for cluster AS1.

Info for manual annotations of cluster AS2:

- Start number 50 was manually annotated 2 times for cluster AS2.

Info for manual annotations of cluster AS3:

- Start number 50 was manually annotated 14 times for cluster AS3.

Info for manual annotations of cluster BB1:

- Start number 60 was manually annotated 4 times for cluster BB1.

Info for manual annotations of cluster BB2:

- Start number 60 was manually annotated 3 times for cluster BB2.

Info for manual annotations of cluster CD:

- Start number 59 was manually annotated 1 time for cluster CD.

Info for manual annotations of cluster DF3:

- Start number 47 was manually annotated 1 time for cluster DF3.

Info for manual annotations of cluster DF4:

- Start number 64 was manually annotated 1 time for cluster DF4.

Info for manual annotations of cluster F1:

- Start number 60 was manually annotated 8 times for cluster F1.

Info for manual annotations of cluster O:

- Start number 44 was manually annotated 29 times for cluster O.
- Start number 56 was manually annotated 1 time for cluster O.

Gene Information:

Gene: 40AC_84 Start: 49609, Stop: 49076, Start Num: 56

Candidate Starts for 40AC_84:

(Start: 56 @49609 has 23 MA's), (71, 49516), (76, 49474), (78, 49447), (79, 49432), (83, 49417), (85, 49387), (92, 49288), (95, 49273), (108, 49216), (112, 49195),

Gene: AbbysRanger_76 Start: 47071, Stop: 46538, Start Num: 41

Candidate Starts for AbbysRanger_76:

(13, 47266), (16, 47224), (21, 47188), (22, 47176), (Start: 27 @47122 has 1 MA's), (Start: 41 @47071 has 133 MA's), (77, 46909), (85, 46840), (92, 46741), (95, 46726), (106, 46678), (108, 46669),

Gene: Abdiel_78 Start: 47271, Stop: 46738, Start Num: 41

Candidate Starts for Abdiel_78:

(Start: 30 @47316 has 3 MA's), (36, 47283), (Start: 41 @47271 has 133 MA's), (77, 47109), (78, 47100), (85, 47040), (92, 46941), (95, 46926), (106, 46878), (108, 46869),

Gene: Abidatro_40 Start: 27123, Stop: 27719, Start Num: 50

Candidate Starts for Abidatro_40:

(3, 26661), (5, 26739), (18, 26958), (Start: 50 @27123 has 24 MA's), (67, 27192), (75, 27249), (77, 27288), (79, 27312), (85, 27357), (88, 27384), (92, 27456), (95, 27471), (98, 27507), (101, 27528), (107, 27558), (114, 27639), (118, 27708),

Gene: Achebe_75 Start: 47050, Stop: 46517, Start Num: 41

Candidate Starts for Achebe_75:

(4, 47452), (6, 47380), (13, 47245), (16, 47203), (21, 47167), (22, 47155), (Start: 27 @47101 has 1 MA's), (Start: 41 @47050 has 133 MA's), (76, 46906), (77, 46888), (85, 46819), (92, 46720), (95, 46705), (106, 46657), (108, 46648),

Gene: AdoptaAdorbs_41 Start: 26809, Stop: 27417, Start Num: 50

Candidate Starts for AdoptaAdorbs_41:

(Start: 50 @26809 has 24 MA's), (75, 26932), (77, 26971), (79, 26995), (82, 27004), (85, 27040), (88, 27067), (92, 27139), (93, 27142), (95, 27154), (98, 27190), (101, 27211), (112, 27271), (120, 27412),

Gene: Albee_79 Start: 47259, Stop: 46726, Start Num: 41

Candidate Starts for Albee_79:

(Start: 30 @47304 has 3 MA's), (36, 47271), (Start: 41 @47259 has 133 MA's), (77, 47097), (78, 47088), (85, 47028), (92, 46929), (95, 46914), (106, 46866), (108, 46857),

Gene: Alberto7_80 Start: 47596, Stop: 47063, Start Num: 41

Candidate Starts for Alberto7_80:

(Start: 30 @47641 has 3 MA's), (36, 47608), (Start: 41 @47596 has 133 MA's), (76, 47452), (77, 47434), (78, 47425), (85, 47365), (92, 47266), (95, 47251), (106, 47203), (108, 47194),

Gene: AlexMinion_44 Start: 26975, Stop: 27574, Start Num: 50

Candidate Starts for AlexMinion_44:

(Start: 50 @26975 has 24 MA's), (66, 27032), (75, 27098), (77, 27137), (82, 27170), (85, 27206), (92, 27305), (95, 27320), (98, 27356), (101, 27377),

Gene: Aliter_78 Start: 44452, Stop: 43904, Start Num: 47

Candidate Starts for Aliter_78:

(Start: 47 @44452 has 19 MA's), (74, 44323), (79, 44260), (82, 44251), (85, 44215), (90, 44134), (95, 44101), (106, 44053), (108, 44044),

Gene: Alkhayr_6 Start: 2237, Stop: 1647, Start Num: 44

Candidate Starts for Alkhayr_6:

(17, 2390), (26, 2315), (35, 2258), (Start: 38 @2246 has 1 MA's), (Start: 44 @2237 has 29 MA's), (63, 2186), (Start: 64 @2183 has 1 MA's), (74, 2108), (76, 2084), (79, 2042), (84, 2012), (95, 1871), (100, 1820), (105, 1799),

Gene: Alma_83 Start: 47302, Stop: 46748, Start Num: 42

Candidate Starts for Alma_83:

(Start: 38 @47308 has 1 MA's), (Start: 40 @47305 has 4 MA's), (Start: 42 @47302 has 20 MA's), (Start: 47 @47296 has 19 MA's), (74, 47167), (79, 47104), (82, 47095), (85, 47059), (90, 46978), (95, 46945), (106, 46897), (108, 46888),

Gene: Amanises_49 Start: 28188, Stop: 28781, Start Num: 50

Candidate Starts for Amanises_49:

(Start: 50 @28188 has 24 MA's), (67, 28254), (75, 28311), (77, 28350), (79, 28374), (88, 28446), (92, 28518), (95, 28533), (98, 28569), (101, 28590), (107, 28620), (114, 28701), (118, 28770),

Gene: AmiCi24_41 Start: 26807, Stop: 27406, Start Num: 50

Candidate Starts for AmiCi24_41:

(Start: 50 @26807 has 24 MA's), (75, 26930), (77, 26969), (82, 27002), (85, 27038), (88, 27065), (92, 27137), (95, 27152), (98, 27188), (101, 27209), (114, 27320), (119, 27401),

Gene: Amphitrite_42 Start: 26808, Stop: 27416, Start Num: 50

Candidate Starts for Amphitrite_42:

(Start: 50 @26808 has 24 MA's), (75, 26931), (77, 26970), (79, 26994), (82, 27003), (85, 27039), (88, 27066), (92, 27138), (93, 27141), (95, 27153), (98, 27189), (101, 27210), (112, 27270), (120, 27411),

Gene: Andrew_43 Start: 26701, Stop: 27291, Start Num: 50

Candidate Starts for Andrew_43:

(Start: 50 @26701 has 24 MA's), (67, 26758), (75, 26815), (77, 26854), (82, 26887), (85, 26923), (88, 26950), (92, 27022), (95, 27037), (98, 27073), (101, 27094), (107, 27124), (112, 27154), (117, 27238),

Gene: Annyong_78 Start: 47304, Stop: 46771, Start Num: 41

Candidate Starts for Annyong_78:

(Start: 30 @47349 has 3 MA's), (36, 47316), (Start: 41 @47304 has 133 MA's), (77, 47142), (78, 47133), (85, 47073), (92, 46974), (95, 46959), (106, 46911), (108, 46902),

Gene: Anthony_80 Start: 47872, Stop: 47306, Start Num: 53

Candidate Starts for Anthony_80:

(43, 47875), (Start: 53 @47872 has 1 MA's), (Start: 64 @47833 has 1 MA's), (66, 47821), (73, 47761), (74, 47758), (78, 47710), (79, 47695), (85, 47650), (92, 47551), (95, 47536), (99, 47494), (103, 47476), (104, 47473), (112, 47431),

Gene: Arissanae_80 Start: 47191, Stop: 46640, Start Num: 46

Candidate Starts for Arissanae_80:

(21, 47317), (Start: 38 @47200 has 1 MA's), (Start: 40 @47197 has 4 MA's), (Start: 42 @47194 has 20 MA's), (Start: 46 @47191 has 7 MA's), (79, 46996), (83, 46981), (85, 46951), (90, 46870), (95, 46837), (106, 46789), (108, 46780),

Gene: Artemis2UCLA_90 Start: 47554, Stop: 47027, Start Num: 56

Candidate Starts for Artemis2UCLA_90:

(21, 47671), (Start: 40 @47560 has 4 MA's), (Start: 42 @47557 has 20 MA's), (Start: 56 @47554 has 23 MA's), (Start: 64 @47518 has 1 MA's), (68, 47485), (74, 47443), (83, 47365), (85, 47335), (92, 47236), (93, 47233), (95, 47221), (96, 47212), (106, 47173), (108, 47164),

Gene: Arturo_76 Start: 47387, Stop: 46854, Start Num: 41

Candidate Starts for Arturo_76:

(Start: 30 @47432 has 3 MA's), (36, 47399), (Start: 41 @47387 has 133 MA's), (76, 47243), (77, 47225), (78, 47216), (85, 47156), (92, 47057), (95, 47042), (106, 46994), (108, 46985),

Gene: Ashwin_7 Start: 2541, Stop: 1951, Start Num: 44

Candidate Starts for Ashwin_7:

(Start: 44 @2541 has 29 MA's), (63, 2490), (Start: 64 @2487 has 1 MA's), (74, 2412), (76, 2388), (77, 2370), (84, 2316), (95, 2175), (100, 2124), (105, 2103),

Gene: Atlantica_42 Start: 26809, Stop: 27408, Start Num: 50

Candidate Starts for Atlantica_42:

(Start: 50 @26809 has 24 MA's), (75, 26932), (77, 26971), (82, 27004), (85, 27040), (88, 27067), (92, 27139), (95, 27154), (98, 27190), (101, 27211), (114, 27322), (119, 27403),

Gene: AvatarAhPeg_79 Start: 47420, Stop: 46878, Start Num: 41

Candidate Starts for AvatarAhPeg_79:

(Start: 41 @47420 has 133 MA's), (Start: 64 @47372 has 1 MA's), (Start: 65 @47366 has 1 MA's), (67, 47351), (76, 47276), (77, 47258), (78, 47249), (85, 47189), (92, 47090), (95, 47075), (106, 47027), (108, 47018),

Gene: Avle17_79 Start: 47253, Stop: 46720, Start Num: 41

Candidate Starts for Avle17_79:

(Start: 30 @47298 has 3 MA's), (36, 47265), (Start: 41 @47253 has 133 MA's), (76, 47109), (77, 47091), (78, 47082), (85, 47022), (92, 46923), (95, 46908), (106, 46860), (108, 46851),

Gene: Ayanochan_83 Start: 47079, Stop: 46531, Start Num: 47

Candidate Starts for Ayanochan_83:

(Start: 38 @47091 has 1 MA's), (Start: 40 @47088 has 4 MA's), (Start: 42 @47085 has 20 MA's), (Start: 47 @47079 has 19 MA's), (74, 46950), (79, 46887), (82, 46878), (85, 46842), (90, 46761), (95, 46728), (106, 46680), (108, 46671),

Gene: Azaz_43 Start: 26884, Stop: 27486, Start Num: 50

Candidate Starts for Azaz_43:

(Start: 50 @26884 has 24 MA's), (67, 26941), (75, 26998), (77, 27037), (82, 27070), (85, 27106), (88, 27133), (92, 27205), (95, 27220), (98, 27256), (101, 27277), (114, 27388),

Gene: BABullseye_82 Start: 45889, Stop: 45359, Start Num: 56

Candidate Starts for BABullseye_82:

(21, 46006), (33, 45925), (Start: 40 @45895 has 4 MA's), (Start: 56 @45889 has 23 MA's), (Start: 58 @45886 has 25 MA's), (Start: 64 @45850 has 1 MA's), (74, 45775), (76, 45754), (83, 45697), (85, 45667), (87, 45652), (92, 45568), (93, 45565), (95, 45553), (96, 45544), (106, 45505), (108, 45496),

Gene: Babushka_39 Start: 26742, Stop: 27350, Start Num: 50

Candidate Starts for Babushka_39:

(Start: 50 @26742 has 24 MA's), (75, 26865), (77, 26904), (82, 26937), (85, 26973), (88, 27000), (92, 27072), (93, 27075), (95, 27087), (98, 27123), (101, 27144), (112, 27204), (120, 27345),

Gene: Baby16_79 Start: 47270, Stop: 46737, Start Num: 41

Candidate Starts for Baby16_79:

(Start: 30 @47315 has 3 MA's), (36, 47282), (Start: 41 @47270 has 133 MA's), (77, 47108), (78, 47099), (85, 47039), (92, 46940), (95, 46925), (106, 46877), (108, 46868),

Gene: BabyBack_83 Start: 49524, Stop: 48991, Start Num: 56

Candidate Starts for BabyBack_83:

(Start: 40 @49530 has 4 MA's), (Start: 42 @49527 has 20 MA's), (Start: 56 @49524 has 23 MA's), (Start: 58 @49521 has 25 MA's), (71, 49431), (73, 49413), (74, 49410), (76, 49389), (78, 49362), (85, 49302), (92, 49203), (95, 49188), (106, 49140), (108, 49131), (112, 49110),

Gene: Backyardigan_74 Start: 47087, Stop: 46554, Start Num: 41

Candidate Starts for Backyardigan_74:

(13, 47282), (16, 47240), (21, 47204), (22, 47192), (Start: 27 @47138 has 1 MA's), (Start: 41 @47087 has 133 MA's), (77, 46925), (85, 46856), (92, 46757), (95, 46742), (106, 46694), (108, 46685),

Gene: Badger_75 Start: 47053, Stop: 46520, Start Num: 41

Candidate Starts for Badger_75:

(13, 47248), (16, 47206), (21, 47170), (22, 47158), (Start: 27 @47104 has 1 MA's), (Start: 41 @47053 has 133 MA's), (77, 46891), (85, 46822), (92, 46723), (95, 46708), (106, 46660), (108, 46651),

Gene: BangNhom_76 Start: 47696, Stop: 47163, Start Num: 41

Candidate Starts for BangNhom_76:

(Start: 30 @47741 has 3 MA's), (36, 47708), (Start: 41 @47696 has 133 MA's), (76, 47552), (77, 47534), (78, 47525), (85, 47465), (92, 47366), (95, 47351), (106, 47303), (108, 47294),

Gene: Bartimeaus_79 Start: 47261, Stop: 46728, Start Num: 41

Candidate Starts for Bartimeaus_79:

(Start: 30 @47306 has 3 MA's), (36, 47273), (Start: 41 @47261 has 133 MA's), (77, 47099), (78, 47090), (85, 47030), (92, 46931), (95, 46916), (106, 46868), (108, 46859),

Gene: Beemo_85 Start: 47289, Stop: 46741, Start Num: 47

Candidate Starts for Beemo_85:

(Start: 47 @47289 has 19 MA's), (74, 47160), (79, 47097), (82, 47088), (85, 47052), (90, 46971), (95, 46938), (106, 46890), (108, 46881),

Gene: Bellris_82 Start: 46814, Stop: 46266, Start Num: 47

Candidate Starts for Bellris_82:

(1, 47396), (21, 46937), (Start: 38 @46826 has 1 MA's), (Start: 40 @46823 has 4 MA's), (Start: 46 @46817 has 7 MA's), (Start: 47 @46814 has 19 MA's), (76, 46664), (79, 46622), (83, 46607), (85, 46577), (90, 46496), (95, 46463), (106, 46415), (108, 46406),

Gene: BellusTerra_80 Start: 47300, Stop: 46767, Start Num: 41

Candidate Starts for BellusTerra_80:

(4, 47702), (6, 47630), (13, 47495), (16, 47453), (21, 47417), (22, 47405), (Start: 27 @47351 has 1 MA's), (Start: 41 @47300 has 133 MA's), (76, 47156), (77, 47138), (78, 47129), (85, 47069), (92, 46970), (95, 46955), (106, 46907), (108, 46898),

Gene: BennyP_90 Start: 47731, Stop: 47204, Start Num: 56

Candidate Starts for BennyP_90:

(21, 47848), (Start: 40 @47737 has 4 MA's), (Start: 42 @47734 has 20 MA's), (Start: 56 @47731 has 23 MA's), (Start: 64 @47695 has 1 MA's), (68, 47662), (74, 47620), (83, 47542), (85, 47512), (92, 47413), (93, 47410), (95, 47398), (96, 47389), (106, 47350), (108, 47341),

Gene: Blackmoor_78 Start: 47261, Stop: 46728, Start Num: 41

Candidate Starts for Blackmoor_78:

(Start: 30 @47306 has 3 MA's), (36, 47273), (Start: 41 @47261 has 133 MA's), (77, 47099), (78, 47090), (85, 47030), (92, 46931), (95, 46916), (106, 46868), (108, 46859),

Gene: BlessJoy_91 Start: 48075, Stop: 47548, Start Num: 58

Candidate Starts for BlessJoy_91:

(21, 48195), (Start: 40 @48084 has 4 MA's), (Start: 42 @48081 has 20 MA's), (Start: 58 @48075 has 25 MA's), (Start: 64 @48039 has 1 MA's), (68, 48006), (74, 47964), (83, 47886), (85, 47856), (92, 47757), (93, 47754), (95, 47742), (96, 47733), (106, 47694), (108, 47685),

Gene: Blessica_6 Start: 2096, Stop: 1506, Start Num: 44

Candidate Starts for Blessica_6:

(Start: 44 @2096 has 29 MA's), (63, 2045), (Start: 64 @2042 has 1 MA's), (74, 1967), (76, 1943), (79, 1901), (84, 1871), (95, 1730), (100, 1679), (105, 1658),

Gene: Blue7_92 Start: 47785, Stop: 47258, Start Num: 58

Candidate Starts for Blue7_92:

(21, 47905), (Start: 40 @47794 has 4 MA's), (Start: 42 @47791 has 20 MA's), (Start: 56 @47788 has 23 MA's), (Start: 58 @47785 has 25 MA's), (Start: 64 @47749 has 1 MA's), (68, 47716), (74, 47674), (83, 47596), (85, 47566), (92, 47467), (93, 47464), (95, 47452), (96, 47443), (106, 47404), (108, 47395),

Gene: BogosyJay_84 Start: 47353, Stop: 46796, Start Num: 40

Candidate Starts for BogosyJay_84:

(Start: 38 @47356 has 1 MA's), (Start: 40 @47353 has 4 MA's), (Start: 42 @47350 has 20 MA's), (Start: 46 @47347 has 7 MA's), (66, 47278), (76, 47194), (79, 47152), (83, 47137), (91, 47023), (95, 46993), (106, 46945), (108, 46936),

Gene: Bombshell_79 Start: 47256, Stop: 46723, Start Num: 41

Candidate Starts for Bombshell_79:

(Start: 30 @47301 has 3 MA's), (36, 47268), (Start: 41 @47256 has 133 MA's), (76, 47112), (77, 47094), (78, 47085), (85, 47025), (92, 46926), (95, 46911), (106, 46863), (108, 46854),

Gene: Bora_6 Start: 2231, Stop: 1641, Start Num: 44

Candidate Starts for Bora_6:

(Start: 44 @2231 has 29 MA's), (63, 2180), (Start: 64 @2177 has 1 MA's), (74, 2102), (76, 2078), (77, 2060), (84, 2006), (95, 1865), (100, 1814), (105, 1793),

Gene: Broseidon_79 Start: 47262, Stop: 46729, Start Num: 41

Candidate Starts for Broseidon_79:

(Start: 30 @47307 has 3 MA's), (36, 47274), (Start: 41 @47262 has 133 MA's), (77, 47100), (78, 47091), (85, 47031), (92, 46932), (95, 46917), (106, 46869), (108, 46860),

Gene: Bruiser_78 Start: 47259, Stop: 46726, Start Num: 41

Candidate Starts for Bruiser_78:

(Start: 30 @47304 has 3 MA's), (36, 47271), (Start: 41 @47259 has 133 MA's), (76, 47115), (77, 47097), (78, 47088), (85, 47028), (92, 46929), (95, 46914), (106, 46866), (108, 46857),

Gene: BubbleTrouble_78 Start: 47331, Stop: 46753, Start Num: 30

Candidate Starts for BubbleTrouble_78:

(Start: 30 @47331 has 3 MA's), (36, 47298), (Start: 41 @47286 has 133 MA's), (77, 47124), (78, 47115), (85, 47055), (92, 46956), (95, 46941), (106, 46893), (108, 46884),

Gene: Bumblebee11_75 Start: 47053, Stop: 46520, Start Num: 41

Candidate Starts for Bumblebee11_75:

(13, 47248), (16, 47206), (21, 47170), (22, 47158), (Start: 27 @47104 has 1 MA's), (Start: 41 @47053 has 133 MA's), (77, 46891), (85, 46822), (92, 46723), (95, 46708), (106, 46660), (108, 46651),

Gene: Burger_77 Start: 47259, Stop: 46726, Start Num: 41

Candidate Starts for Burger_77:

(Start: 30 @47304 has 3 MA's), (36, 47271), (Start: 41 @47259 has 133 MA's), (76, 47115), (77, 47097), (78, 47088), (85, 47028), (92, 46929), (95, 46914), (106, 46866), (108, 46857),

Gene: ByChance_63 Start: 41432, Stop: 42055, Start Num: 60

Candidate Starts for ByChance_63:

(24, 41309), (29, 41351), (Start: 60 @41432 has 15 MA's), (62, 41447), (Start: 65 @41474 has 1 MA's), (66, 41480), (69, 41507), (74, 41543), (85, 41654), (89, 41714), (96, 41777), (98, 41804), (102, 41825),

Gene: Caelakin_77 Start: 47259, Stop: 46726, Start Num: 41

Candidate Starts for Caelakin_77:

(Start: 30 @47304 has 3 MA's), (36, 47271), (Start: 41 @47259 has 133 MA's), (76, 47115), (77, 47097), (78, 47088), (85, 47028), (92, 46929), (95, 46914), (106, 46866), (108, 46857),

Gene: Camara_42 Start: 26811, Stop: 27419, Start Num: 50

Candidate Starts for Camara_42:

(Start: 50 @26811 has 24 MA's), (75, 26934), (77, 26973), (79, 26997), (82, 27006), (85, 27042), (88, 27069), (92, 27141), (93, 27144), (95, 27156), (98, 27192), (101, 27213), (112, 27273), (120, 27414),

Gene: Camerico_38 Start: 42408, Stop: 42908, Start Num: 64

Candidate Starts for Camerico_38:

(52, 42360), (57, 42366), (Start: 64 @42408 has 1 MA's), (66, 42420), (72, 42492), (74, 42498), (88, 42636), (92, 42702), (94, 42708),

Gene: Camperdownii_76 Start: 46729, Stop: 46142, Start Num: 27

Candidate Starts for Camperdownii_76:

(Start: 27 @46729 has 1 MA's), (Start: 40 @46678 has 4 MA's), (74, 46561), (76, 46540), (85, 46453), (95, 46339), (106, 46291), (108, 46282), (112, 46261),

Gene: Candra_87 Start: 47596, Stop: 47063, Start Num: 42

Candidate Starts for Candra_87:

(21, 47710), (33, 47629), (Start: 40 @47599 has 4 MA's), (Start: 42 @47596 has 20 MA's), (Start: 56 @47593 has 23 MA's), (Start: 58 @47590 has 25 MA's), (Start: 64 @47554 has 1 MA's), (74, 47479), (76, 47458), (83, 47401), (85, 47371), (87, 47356), (92, 47272), (106, 47209), (108, 47200),

Gene: Catalina_87 Start: 47399, Stop: 46851, Start Num: 47

Candidate Starts for Catalina_87:

(Start: 47 @47399 has 19 MA's), (74, 47270), (79, 47207), (82, 47198), (85, 47162), (90, 47081), (95, 47048), (106, 47000), (108, 46991),

Gene: Catdawg_6 Start: 2146, Stop: 1556, Start Num: 44

Candidate Starts for Catdawg_6:

(Start: 44 @2146 has 29 MA's), (63, 2095), (Start: 64 @2092 has 1 MA's), (74, 2017), (76, 1993), (79, 1951), (84, 1921), (95, 1780), (100, 1729), (105, 1708),

Gene: Celestiallunch_80 Start: 46594, Stop: 46028, Start Num: 38

Candidate Starts for Celestiallunch_80:

(Start: 38 @46594 has 1 MA's), (Start: 40 @46591 has 4 MA's), (79, 46399), (83, 46384), (85, 46354), (90, 46273), (95, 46240), (106, 46192), (108, 46183),

Gene: CentreCat_79 Start: 47299, Stop: 46766, Start Num: 41

Candidate Starts for CentreCat_79:

(Start: 30 @47344 has 3 MA's), (36, 47311), (Start: 41 @47299 has 133 MA's), (76, 47155), (77, 47137), (78, 47128), (85, 47068), (92, 46969), (95, 46954), (106, 46906), (108, 46897),

Gene: Cerulean_81 Start: 47697, Stop: 47164, Start Num: 41

Candidate Starts for Cerulean_81:

(Start: 30 @47742 has 3 MA's), (36, 47709), (Start: 41 @47697 has 133 MA's), (76, 47553), (77, 47535), (78, 47526), (85, 47466), (92, 47367), (95, 47352), (106, 47304), (108, 47295),

Gene: ChampagnePapi_82 Start: 47699, Stop: 47166, Start Num: 41

Candidate Starts for ChampagnePapi_82:

(Start: 30 @47744 has 3 MA's), (36, 47711), (Start: 41 @47699 has 133 MA's), (76, 47555), (77, 47537), (78, 47528), (85, 47468), (92, 47369), (95, 47354), (106, 47306), (108, 47297),

Gene: Chaph_79 Start: 47270, Stop: 46737, Start Num: 41

Candidate Starts for Chaph_79:

(Start: 30 @47315 has 3 MA's), (36, 47282), (Start: 41 @47270 has 133 MA's), (76, 47126), (77, 47108), (78, 47099), (85, 47039), (92, 46940), (95, 46925), (106, 46877), (108, 46868),

Gene: Charm_80 Start: 46735, Stop: 46187, Start Num: 40

Candidate Starts for Charm_80:

(7, 47011), (12, 46930), (Start: 38 @46738 has 1 MA's), (Start: 40 @46735 has 4 MA's), (66, 46669), (74, 46606), (76, 46585), (79, 46543), (81, 46537), (83, 46528), (85, 46498), (90, 46417), (95, 46384), (106, 46336), (108, 46327),

Gene: Chartreuse_88 Start: 46891, Stop: 46364, Start Num: 58

Candidate Starts for Chartreuse_88:

(21, 47011), (33, 46930), (Start: 40 @46900 has 4 MA's), (Start: 42 @46897 has 20 MA's), (Start: 56 @46894 has 23 MA's), (Start: 58 @46891 has 25 MA's), (Start: 64 @46855 has 1 MA's), (74, 46780), (76, 46759), (83, 46702), (85, 46672), (87, 46657), (92, 46573), (106, 46510), (108, 46501),

Gene: Chickaboom_41 Start: 27140, Stop: 27736, Start Num: 50

Candidate Starts for Chickaboom_41:

(Start: 50 @27140 has 24 MA's), (75, 27266), (77, 27305), (79, 27329), (88, 27401), (92, 27473), (93, 27476), (95, 27488), (98, 27524), (101, 27545), (107, 27575), (112, 27605), (114, 27656), (118, 27725),

Gene: Chicken_40 Start: 27483, Stop: 28082, Start Num: 50

Candidate Starts for Chicken_40:

(Start: 50 @27483 has 24 MA's), (75, 27612), (77, 27651), (79, 27675), (88, 27747), (92, 27819), (95, 27834), (98, 27870), (101, 27891), (107, 27921), (114, 28002), (118, 28071),

Gene: Chupacabra_76 Start: 47045, Stop: 46506, Start Num: 42

Candidate Starts for Chupacabra_76:

(Start: 27 @47099 has 1 MA's), (Start: 42 @47045 has 20 MA's), (Start: 64 @47000 has 1 MA's), (74, 46925), (76, 46904), (85, 46817), (90, 46736), (95, 46703), (96, 46694), (106, 46655), (108, 46646), (112, 46625),

Gene: Cici_76 Start: 47066, Stop: 46533, Start Num: 41

Candidate Starts for Cici_76:

(13, 47261), (16, 47219), (21, 47183), (22, 47171), (Start: 27 @47117 has 1 MA's), (Start: 41 @47066 has 133 MA's), (77, 46904), (85, 46835), (92, 46736), (95, 46721), (106, 46673), (108, 46664),

Gene: Cindaradix_74 Start: 47332, Stop: 46844, Start Num: 65

Candidate Starts for Cindaradix_74:

(Start: 41 @47386 has 133 MA's), (Start: 64 @47338 has 1 MA's), (Start: 65 @47332 has 1 MA's), (67, 47317), (76, 47242), (77, 47224), (78, 47215), (85, 47155), (92, 47056), (95, 47041), (106, 46993), (108, 46984),

Gene: Cintron_79 Start: 47375, Stop: 46842, Start Num: 41

Candidate Starts for Cintron_79:

(Start: 30 @47420 has 3 MA's), (36, 47387), (Start: 41 @47375 has 133 MA's), (77, 47213), (78, 47204), (85, 47144), (92, 47045), (95, 47030), (106, 46982), (108, 46973),

Gene: Citius_79 Start: 47280, Stop: 46747, Start Num: 41

Candidate Starts for Citius_79:

(Start: 30 @47325 has 3 MA's), (36, 47292), (Start: 41 @47280 has 133 MA's), (77, 47118), (78, 47109), (85, 47049), (92, 46950), (95, 46935), (106, 46887), (108, 46878),

Gene: Clarenza_78 Start: 47256, Stop: 46723, Start Num: 41

Candidate Starts for Clarenza_78:

(Start: 30 @47301 has 3 MA's), (36, 47268), (Start: 41 @47256 has 133 MA's), (76, 47112), (77, 47094), (78, 47085), (85, 47025), (92, 46926), (95, 46911), (106, 46863), (108, 46854),

Gene: CloudWang3_91 Start: 48083, Stop: 47556, Start Num: 56

Candidate Starts for CloudWang3_91:

(21, 48200), (Start: 40 @48089 has 4 MA's), (Start: 42 @48086 has 20 MA's), (Start: 56 @48083 has 23 MA's), (Start: 64 @48047 has 1 MA's), (68, 48014), (74, 47972), (83, 47894), (85, 47864), (92, 47765), (93, 47762), (95, 47750), (96, 47741), (106, 47702), (108, 47693),

Gene: Cocoaberry_79 Start: 47260, Stop: 46727, Start Num: 41

Candidate Starts for Cocoaberry_79:

(Start: 30 @47305 has 3 MA's), (36, 47272), (Start: 41 @47260 has 133 MA's), (76, 47116), (77, 47098), (78, 47089), (85, 47029), (92, 46930), (95, 46915), (106, 46867), (108, 46858),

Gene: CogOmlette_82 Start: 46811, Stop: 46263, Start Num: 47

Candidate Starts for CogOmlette_82:

(1, 47393), (21, 46934), (Start: 38 @46823 has 1 MA's), (Start: 40 @46820 has 4 MA's), (Start: 46 @46814 has 7 MA's), (Start: 47 @46811 has 19 MA's), (76, 46661), (79, 46619), (83, 46604), (85, 46574), (90, 46493), (95, 46460), (106, 46412), (108, 46403),

Gene: Commander_77 Start: 47257, Stop: 46724, Start Num: 41

Candidate Starts for Commander_77:

(Start: 30 @47302 has 3 MA's), (36, 47269), (Start: 41 @47257 has 133 MA's), (76, 47113), (77, 47095), (78, 47086), (85, 47026), (92, 46927), (95, 46912), (106, 46864), (108, 46855),

Gene: Connomayer_79 Start: 47259, Stop: 46726, Start Num: 41

Candidate Starts for Connomayer_79:

(Start: 30 @47304 has 3 MA's), (36, 47271), (Start: 41 @47259 has 133 MA's), (77, 47097), (78, 47088), (85, 47028), (92, 46929), (95, 46914), (106, 46866), (108, 46857),

Gene: Conquerage_83 Start: 47065, Stop: 46517, Start Num: 47

Candidate Starts for Conquerage_83:

(Start: 38 @47077 has 1 MA's), (Start: 40 @47074 has 4 MA's), (Start: 42 @47071 has 20 MA's), (Start: 47 @47065 has 19 MA's), (74, 46936), (79, 46873), (82, 46864), (85, 46828), (90, 46747), (95, 46714), (106, 46666), (108, 46657),

Gene: Cookiedough_89 Start: 48199, Stop: 47672, Start Num: 58

Candidate Starts for Cookiedough_89:

(19, 48337), (21, 48325), (Start: 40 @48214 has 4 MA's), (Start: 42 @48211 has 20 MA's), (Start: 56 @48202 has 23 MA's), (Start: 58 @48199 has 25 MA's), (Start: 64 @48163 has 1 MA's), (74, 48088), (76, 48067), (83, 48010), (85, 47980), (87, 47965), (92, 47881), (106, 47818), (108, 47809),

Gene: Corndog_7 Start: 2523, Stop: 1933, Start Num: 44

Candidate Starts for Corndog_7:

(Start: 44 @2523 has 29 MA's), (63, 2472), (Start: 64 @2469 has 1 MA's), (74, 2394), (76, 2370), (77, 2352), (84, 2298), (95, 2157), (100, 2106), (105, 2085),

Gene: Cygnet_42 Start: 27686, Stop: 28285, Start Num: 50

Candidate Starts for Cygnet_42:

(Start: 50 @27686 has 24 MA's), (73, 27803), (75, 27809), (77, 27848), (82, 27881), (85, 27917), (88, 27944), (92, 28016), (95, 28031), (98, 28067), (101, 28088),

Gene: DaVinci_87 Start: 46945, Stop: 46418, Start Num: 58

Candidate Starts for DaVinci_87:

(21, 47065), (33, 46984), (Start: 40 @46954 has 4 MA's), (Start: 42 @46951 has 20 MA's), (Start: 56 @46948 has 23 MA's), (Start: 58 @46945 has 25 MA's), (Start: 64 @46909 has 1 MA's), (74, 46834), (76, 46813), (83, 46756), (85, 46726), (87, 46711), (92, 46627), (106, 46564), (108, 46555),

Gene: DanHam62_42 Start: 26808, Stop: 27407, Start Num: 50

Candidate Starts for DanHam62_42:

(Start: 50 @26808 has 24 MA's), (75, 26931), (77, 26970), (82, 27003), (85, 27039), (88, 27066), (92, 27138), (95, 27153), (98, 27189), (101, 27210), (114, 27321), (119, 27402),

Gene: Darrell_83 Start: 46502, Stop: 45951, Start Num: 46

Candidate Starts for Darrell_83:

(21, 46628), (Start: 38 @46511 has 1 MA's), (Start: 40 @46508 has 4 MA's), (Start: 42 @46505 has 20 MA's), (Start: 46 @46502 has 7 MA's), (49, 46496), (79, 46307), (83, 46292), (85, 46262), (90, 46181), (91, 46178), (95, 46148), (106, 46100), (108, 46091),

Gene: DarthPhader_80 Start: 48059, Stop: 47520, Start Num: 58

Candidate Starts for DarthPhader_80:

(31, 48107), (Start: 58 @48059 has 25 MA's), (74, 47948), (79, 47885), (80, 47873), (82, 47867), (83, 47861), (85, 47831), (95, 47717), (108, 47660), (112, 47639),

Gene: Datway_76 Start: 47070, Stop: 46537, Start Num: 41

Candidate Starts for Datway_76:

(Start: 30 @47115 has 3 MA's), (36, 47082), (Start: 41 @47070 has 133 MA's), (74, 46947), (77, 46908), (78, 46899), (85, 46839), (92, 46740), (95, 46725), (106, 46677), (108, 46668),

Gene: Deano_76 Start: 47267, Stop: 46734, Start Num: 41

Candidate Starts for Deano_76:

(Start: 30 @47312 has 3 MA's), (36, 47279), (Start: 41 @47267 has 133 MA's), (77, 47105), (78, 47096), (85, 47036), (92, 46937), (95, 46922), (106, 46874), (108, 46865),

Gene: DelvinSonDorr_84 Start: 47163, Stop: 46627, Start Num: 40

Candidate Starts for DelvinSonDorr_84:

(21, 47274), (33, 47193), (Start: 40 @47163 has 4 MA's), (Start: 42 @47160 has 20 MA's), (Start: 56 @47157 has 23 MA's), (Start: 58 @47154 has 25 MA's), (Start: 64 @47118 has 1 MA's), (68, 47085), (74, 47043), (76, 47022), (83, 46965), (85, 46935), (87, 46920), (92, 46836), (106, 46773), (108, 46764),

Gene: Dhanush_79 Start: 47262, Stop: 46729, Start Num: 41

Candidate Starts for Dhanush_79:

(Start: 30 @47307 has 3 MA's), (36, 47274), (Start: 41 @47262 has 133 MA's), (76, 47118), (77, 47100), (78, 47091), (85, 47031), (92, 46932), (95, 46917), (106, 46869), (108, 46860),

Gene: DirtyDunning_78 Start: 47271, Stop: 46738, Start Num: 41

Candidate Starts for DirtyDunning_78:

(Start: 30 @47316 has 3 MA's), (36, 47283), (Start: 41 @47271 has 133 MA's), (76, 47127), (77, 47109), (78, 47100), (85, 47040), (92, 46941), (95, 46926), (106, 46878), (108, 46869),

Gene: DontArgue_74 Start: 45905, Stop: 45366, Start Num: 51

Candidate Starts for DontArgue_74:

(Start: 27 @45965 has 1 MA's), (Start: 51 @45905 has 2 MA's), (Start: 64 @45860 has 1 MA's), (74, 45785), (83, 45707), (85, 45677), (95, 45563), (106, 45515), (108, 45506), (112, 45485),

Gene: Dorothea_89 Start: 48194, Stop: 47664, Start Num: 56

Candidate Starts for Dorothea_89:

(19, 48329), (21, 48317), (Start: 40 @48206 has 4 MA's), (Start: 42 @48203 has 20 MA's), (Start: 56 @48194 has 23 MA's), (Start: 58 @48191 has 25 MA's), (Start: 64 @48155 has 1 MA's), (74, 48080), (76, 48059), (83, 48002), (85, 47972), (87, 47957), (92, 47873), (106, 47810), (108, 47801),

Gene: Dorothy_71 Start: 44271, Stop: 44831, Start Num: 60

Candidate Starts for Dorothy_71:

(29, 44190), (Start: 60 @44271 has 15 MA's), (69, 44346), (74, 44382), (76, 44406), (85, 44493), (92, 44592), (93, 44595), (96, 44616), (98, 44643), (102, 44664),

Gene: Drake94_76 Start: 46202, Stop: 45663, Start Num: 42

Candidate Starts for Drake94_76:

(6, 46538), (13, 46403), (16, 46361), (21, 46325), (Start: 30 @46253 has 3 MA's), (32, 46247), (Start: 42 @46202 has 20 MA's), (Start: 64 @46157 has 1 MA's), (74, 46082), (83, 46004), (85, 45974), (95, 45860), (106, 45812), (108, 45803), (112, 45782),

Gene: DreamTeam1_80 Start: 46583, Stop: 46035, Start Num: 40

Candidate Starts for DreamTeam1_80:

(7, 46859), (12, 46778), (Start: 38 @46586 has 1 MA's), (Start: 40 @46583 has 4 MA's), (66, 46517), (74, 46454), (79, 46391), (81, 46385), (83, 46376), (85, 46346), (90, 46265), (95, 46232), (106, 46184), (108, 46175),

Gene: Druantia_78 Start: 47262, Stop: 46729, Start Num: 41

Candidate Starts for Druantia_78:

(13, 47457), (16, 47415), (21, 47379), (22, 47367), (Start: 27 @47313 has 1 MA's), (Start: 41 @47262 has 133 MA's), (76, 47118), (77, 47100), (78, 47091), (85, 47031), (92, 46932), (95, 46917), (106, 46869), (108, 46860),

Gene: DustyMartin_81 Start: 47188, Stop: 46649, Start Num: 51

Candidate Starts for DustyMartin_81:

(Start: 27 @47248 has 1 MA's), (Start: 51 @47188 has 2 MA's), (Start: 64 @47143 has 1 MA's), (74, 47068), (76, 47047), (83, 46990), (85, 46960), (90, 46879), (95, 46846), (96, 46837), (106, 46798), (108, 46789), (112, 46768),

Gene: Dylan_7 Start: 2545, Stop: 1955, Start Num: 44

Candidate Starts for Dylan_7:

(Start: 44 @2545 has 29 MA's), (63, 2494), (Start: 64 @2491 has 1 MA's), (74, 2416), (76, 2392), (77, 2374), (84, 2320), (95, 2179), (100, 2128), (105, 2107),

Gene: Eagle_78 Start: 47321, Stop: 46788, Start Num: 41

Candidate Starts for Eagle_78:

(Start: 30 @47366 has 3 MA's), (36, 47333), (Start: 41 @47321 has 133 MA's), (76, 47177), (77, 47159), (78, 47150), (85, 47090), (92, 46991), (95, 46976), (106, 46928), (108, 46919),

Gene: EagleEye_89 Start: 49182, Stop: 48643, Start Num: 51

Candidate Starts for EagleEye_89:

(Start: 51 @49182 has 2 MA's), (Start: 54 @49179 has 1 MA's), (Start: 64 @49137 has 1 MA's), (74, 49062), (83, 48984), (85, 48954), (87, 48939), (90, 48873), (95, 48840), (106, 48792), (108, 48783), (112, 48762),

Gene: Eaglepride_82 Start: 47125, Stop: 46586, Start Num: 42

Candidate Starts for Eaglepride_82:

(Start: 27 @47179 has 1 MA's), (Start: 42 @47125 has 20 MA's), (Start: 64 @47080 has 1 MA's), (76, 46984), (85, 46897), (95, 46783), (106, 46735), (108, 46726), (112, 46705),

Gene: Eapen_79 Start: 47254, Stop: 46721, Start Num: 41

Candidate Starts for Eapen_79:

(Start: 30 @47299 has 3 MA's), (36, 47266), (Start: 41 @47254 has 133 MA's), (76, 47110), (77, 47092), (78, 47083), (85, 47023), (92, 46924), (95, 46909), (106, 46861), (108, 46852),

Gene: EdogawaKiddo_83 Start: 47367, Stop: 46819, Start Num: 47

Candidate Starts for EdogawaKiddo_83:

(Start: 38 @47379 has 1 MA's), (Start: 40 @47376 has 4 MA's), (Start: 42 @47373 has 20 MA's),
(Start: 47 @47367 has 19 MA's), (74, 47238), (79, 47175), (82, 47166), (85, 47130), (90, 47049), (95,
47016), (106, 46968), (108, 46959),

Gene: Eesa_39 Start: 28022, Stop: 28654, Start Num: 50

Candidate Starts for Eesa_39:

(Start: 50 @28022 has 24 MA's), (75, 28151), (77, 28190), (79, 28214), (88, 28286), (92, 28358), (95,
28373), (98, 28409), (101, 28430), (107, 28460), (114, 28541),

Gene: Eidsmoe_83 Start: 47063, Stop: 46509, Start Num: 42

Candidate Starts for Eidsmoe_83:

(Start: 38 @47069 has 1 MA's), (Start: 40 @47066 has 4 MA's), (Start: 42 @47063 has 20 MA's),
(Start: 47 @47057 has 19 MA's), (74, 46928), (79, 46865), (82, 46856), (85, 46820), (90, 46739), (95,
46706), (106, 46658), (108, 46649),

Gene: Elephantoon_85 Start: 47218, Stop: 46667, Start Num: 46

Candidate Starts for Elephantoon_85:

(9, 47509), (21, 47347), (Start: 38 @47230 has 1 MA's), (Start: 40 @47227 has 4 MA's), (Start: 42
@47224 has 20 MA's), (Start: 44 @47221 has 29 MA's), (Start: 46 @47218 has 7 MA's), (79, 47023),
(83, 47008), (85, 46978), (90, 46897), (95, 46864), (106, 46816), (108, 46807),

Gene: EmiMonkey_66 Start: 47129, Stop: 47779, Start Num: 60

Candidate Starts for EmiMonkey_66:

(11, 46880), (14, 46910), (24, 47006), (29, 47048), (Start: 60 @47129 has 15 MA's), (62, 47144), (74,
47240), (76, 47264), (85, 47351), (89, 47411), (95, 47465), (96, 47474), (98, 47501), (102, 47522),
(116, 47657),

Gene: EmyBug_82 Start: 47065, Stop: 46511, Start Num: 42

Candidate Starts for EmyBug_82:

(Start: 38 @47071 has 1 MA's), (Start: 40 @47068 has 4 MA's), (Start: 42 @47065 has 20 MA's),
(Start: 47 @47059 has 19 MA's), (74, 46930), (79, 46867), (82, 46858), (85, 46822), (90, 46741), (95,
46708), (106, 46660), (108, 46651),

Gene: EricB_87 Start: 47088, Stop: 46561, Start Num: 58

Candidate Starts for EricB_87:

(21, 47214), (Start: 56 @47091 has 23 MA's), (Start: 58 @47088 has 25 MA's), (Start: 64 @47052 has
1 MA's), (68, 47019), (74, 46977), (76, 46956), (83, 46899), (85, 46869), (87, 46854), (92, 46770),
(106, 46707), (108, 46698),

Gene: Eris_78 Start: 47271, Stop: 46738, Start Num: 41

Candidate Starts for Eris_78:

(Start: 30 @47316 has 3 MA's), (36, 47283), (Start: 41 @47271 has 133 MA's), (76, 47127), (77,
47109), (78, 47100), (85, 47040), (92, 46941), (95, 46926), (106, 46878), (108, 46869),

Gene: Eros_79 Start: 47261, Stop: 46728, Start Num: 41

Candidate Starts for Eros_79:

(Start: 30 @47306 has 3 MA's), (36, 47273), (Start: 41 @47261 has 133 MA's), (77, 47099), (78,
47090), (85, 47030), (92, 46931), (95, 46916), (106, 46868), (108, 46859),

Gene: Euratis_33 Start: 25788, Stop: 26288, Start Num: 60

Candidate Starts for Euratis_33:

(39, 25764), (Start: 60 @25788 has 15 MA's), (62, 25803), (75, 25902), (77, 25941), (111, 26157), (115, 26235),

Gene: Eurydice_80 Start: 47296, Stop: 46763, Start Num: 41

Candidate Starts for Eurydice_80:

(Start: 30 @47341 has 3 MA's), (36, 47308), (Start: 41 @47296 has 133 MA's), (76, 47152), (77, 47134), (78, 47125), (85, 47065), (92, 46966), (95, 46951), (106, 46903), (108, 46894),

Gene: ExplosioNervosa_83 Start: 47125, Stop: 46577, Start Num: 47

Candidate Starts for ExplosioNervosa_83:

(Start: 38 @47137 has 1 MA's), (Start: 40 @47134 has 4 MA's), (Start: 42 @47131 has 20 MA's), (Start: 47 @47125 has 19 MA's), (74, 46996), (79, 46933), (82, 46924), (85, 46888), (90, 46807), (95, 46774), (106, 46726), (108, 46717),

Gene: Familton_7 Start: 2147, Stop: 1557, Start Num: 44

Candidate Starts for Familton_7:

(Start: 44 @2147 has 29 MA's), (63, 2096), (Start: 64 @2093 has 1 MA's), (74, 2018), (76, 1994), (79, 1952), (84, 1922), (95, 1781), (100, 1730), (105, 1709),

Gene: FatCactus_78 Start: 47335, Stop: 46769, Start Num: 53

Candidate Starts for FatCactus_78:

(Start: 53 @47335 has 1 MA's), (Start: 64 @47296 has 1 MA's), (74, 47221), (78, 47173), (79, 47158), (85, 47113), (93, 47011), (95, 46999), (99, 46957), (103, 46939), (104, 46936), (112, 46894),

Gene: Fayely_83 Start: 47032, Stop: 46484, Start Num: 47

Candidate Starts for Fayely_83:

(Start: 47 @47032 has 19 MA's), (74, 46903), (79, 46840), (82, 46831), (85, 46795), (90, 46714), (95, 46681), (106, 46633), (108, 46624),

Gene: Fingolfin_42 Start: 26811, Stop: 27410, Start Num: 50

Candidate Starts for Fingolfin_42:

(Start: 50 @26811 has 24 MA's), (75, 26934), (77, 26973), (82, 27006), (85, 27042), (88, 27069), (92, 27141), (95, 27156), (98, 27192), (101, 27213), (114, 27324), (119, 27405),

Gene: Firecracker_6 Start: 2232, Stop: 1642, Start Num: 44

Candidate Starts for Firecracker_6:

(Start: 44 @2232 has 29 MA's), (63, 2181), (Start: 64 @2178 has 1 MA's), (74, 2103), (76, 2079), (77, 2061), (84, 2007), (95, 1866), (100, 1815), (105, 1794),

Gene: Florean_79 Start: 47258, Stop: 46725, Start Num: 41

Candidate Starts for Florean_79:

(Start: 30 @47303 has 3 MA's), (36, 47270), (Start: 41 @47258 has 133 MA's), (77, 47096), (78, 47087), (85, 47027), (92, 46928), (95, 46913), (106, 46865), (108, 46856),

Gene: Flux_80 Start: 47257, Stop: 46724, Start Num: 41

Candidate Starts for Flux_80:

(Start: 30 @47302 has 3 MA's), (36, 47269), (Start: 41 @47257 has 133 MA's), (77, 47095), (78, 47086), (85, 47026), (92, 46927), (95, 46912), (106, 46864), (108, 46855),

Gene: FoulBall_6 Start: 2147, Stop: 1557, Start Num: 44

Candidate Starts for FoulBall_6:

(Start: 44 @2147 has 29 MA's), (63, 2096), (Start: 64 @2093 has 1 MA's), (74, 2018), (76, 1994), (79, 1952), (84, 1922), (95, 1781), (100, 1730), (105, 1709),

Gene: Funston_78 Start: 47256, Stop: 46723, Start Num: 41

Candidate Starts for Funston_78:

(Start: 30 @47301 has 3 MA's), (36, 47268), (Start: 41 @47256 has 133 MA's), (76, 47112), (77, 47094), (78, 47085), (85, 47025), (92, 46926), (95, 46911), (106, 46863), (108, 46854),

Gene: Gadost_79 Start: 47260, Stop: 46727, Start Num: 41

Candidate Starts for Gadost_79:

(Start: 30 @47305 has 3 MA's), (36, 47272), (Start: 41 @47260 has 133 MA's), (76, 47116), (77, 47098), (78, 47089), (85, 47029), (92, 46930), (95, 46915), (106, 46867), (108, 46858),

Gene: Garak_92 Start: 48028, Stop: 47501, Start Num: 56

Candidate Starts for Garak_92:

(21, 48145), (Start: 40 @48034 has 4 MA's), (Start: 42 @48031 has 20 MA's), (Start: 56 @48028 has 23 MA's), (Start: 64 @47992 has 1 MA's), (68, 47959), (74, 47917), (83, 47839), (85, 47809), (92, 47710), (93, 47707), (95, 47695), (96, 47686), (106, 47647), (108, 47638),

Gene: GaugeLDP_82 Start: 49074, Stop: 48544, Start Num: 56

Candidate Starts for GaugeLDP_82:

(Start: 40 @49080 has 4 MA's), (Start: 56 @49074 has 23 MA's), (71, 48984), (73, 48966), (74, 48963), (76, 48942), (85, 48855), (92, 48756), (95, 48741), (106, 48693), (108, 48684), (112, 48663),

Gene: Gladiator_87 Start: 47742, Stop: 47212, Start Num: 56

Candidate Starts for Gladiator_87:

(21, 47865), (Start: 56 @47742 has 23 MA's), (Start: 58 @47739 has 25 MA's), (Start: 64 @47703 has 1 MA's), (68, 47670), (74, 47628), (83, 47550), (85, 47520), (92, 47421), (93, 47418), (95, 47406), (96, 47397), (106, 47358), (108, 47349),

Gene: Glotell_43 Start: 26967, Stop: 27575, Start Num: 50

Candidate Starts for Glotell_43:

(Start: 50 @26967 has 24 MA's), (75, 27090), (77, 27129), (79, 27153), (82, 27162), (85, 27198), (88, 27225), (92, 27297), (93, 27300), (95, 27312), (98, 27348), (101, 27369), (112, 27429), (120, 27570),

Gene: Gmala1_28 Start: 35092, Stop: 35631, Start Num: 45

Candidate Starts for Gmala1_28:

(45, 35092), (61, 35122), (Start: 64 @35149 has 1 MA's), (77, 35281),

Gene: Goose_80 Start: 46856, Stop: 46317, Start Num: 42

Candidate Starts for Goose_80:

(Start: 27 @46910 has 1 MA's), (Start: 42 @46856 has 20 MA's), (Start: 64 @46811 has 1 MA's), (67, 46790), (74, 46736), (76, 46715), (85, 46628), (90, 46547), (95, 46514), (96, 46505), (106, 46466), (108, 46457), (112, 46436),

Gene: GordDuk1_28 Start: 35030, Stop: 35569, Start Num: 45

Candidate Starts for GordDuk1_28:

(45, 35030), (61, 35060), (Start: 64 @35087 has 1 MA's), (77, 35219), (86, 35300),

Gene: GordTnk2_28 Start: 34999, Stop: 35538, Start Num: 45

Candidate Starts for GordTnk2_28:

(45, 34999), (61, 35029), (Start: 64 @35056 has 1 MA's), (77, 35188), (86, 35269),

Gene: Gravel_49 Start: 27995, Stop: 28594, Start Num: 50

Candidate Starts for Gravel_49:

(Start: 50 @27995 has 24 MA's), (67, 28067), (75, 28124), (77, 28163), (79, 28187), (88, 28259), (92, 28331), (95, 28346), (98, 28382), (101, 28403), (107, 28433), (114, 28514), (118, 28583),

Gene: GreedyLawyer_82 Start: 47521, Stop: 46994, Start Num: 58

Candidate Starts for GreedyLawyer_82:

(19, 47659), (21, 47647), (Start: 40 @47536 has 4 MA's), (Start: 42 @47533 has 20 MA's), (Start: 56 @47524 has 23 MA's), (Start: 58 @47521 has 25 MA's), (Start: 64 @47485 has 1 MA's), (74, 47410), (76, 47389), (83, 47332), (85, 47302), (87, 47287), (92, 47203), (106, 47140), (108, 47131),

Gene: Gruunaga_90 Start: 47694, Stop: 47167, Start Num: 58

Candidate Starts for Gruunaga_90:

(21, 47820), (Start: 56 @47697 has 23 MA's), (Start: 58 @47694 has 25 MA's), (Start: 64 @47658 has 1 MA's), (68, 47625), (74, 47583), (83, 47505), (85, 47475), (92, 47376), (93, 47373), (95, 47361), (96, 47352), (106, 47313), (108, 47304),

Gene: HamCheese_42 Start: 26795, Stop: 27394, Start Num: 50

Candidate Starts for HamCheese_42:

(Start: 50 @26795 has 24 MA's), (75, 26918), (77, 26957), (82, 26990), (85, 27026), (88, 27053), (92, 27125), (95, 27140), (98, 27176), (101, 27197), (114, 27308), (119, 27389),

Gene: HamSlice_75 Start: 47258, Stop: 46725, Start Num: 41

Candidate Starts for HamSlice_75:

(Start: 30 @47303 has 3 MA's), (36, 47270), (Start: 41 @47258 has 133 MA's), (77, 47096), (78, 47087), (85, 47027), (92, 46928), (95, 46913), (106, 46865), (108, 46856),

Gene: Hammer_91 Start: 47404, Stop: 46874, Start Num: 42

Candidate Starts for Hammer_91:

(21, 47518), (Start: 40 @47407 has 4 MA's), (Start: 42 @47404 has 20 MA's), (Start: 56 @47401 has 23 MA's), (Start: 64 @47365 has 1 MA's), (68, 47332), (74, 47290), (83, 47212), (85, 47182), (92, 47083), (93, 47080), (95, 47068), (96, 47059), (106, 47020), (108, 47011),

Gene: Hanray_83 Start: 47343, Stop: 46795, Start Num: 47

Candidate Starts for Hanray_83:

(Start: 38 @47355 has 1 MA's), (Start: 40 @47352 has 4 MA's), (Start: 42 @47349 has 20 MA's), (Start: 47 @47343 has 19 MA's), (74, 47214), (79, 47151), (82, 47142), (85, 47106), (90, 47025), (95, 46992), (106, 46944), (108, 46935),

Gene: Happiness_78 Start: 47282, Stop: 46749, Start Num: 41

Candidate Starts for Happiness_78:

(Start: 30 @47327 has 3 MA's), (36, 47294), (Start: 41 @47282 has 133 MA's), (76, 47138), (77, 47120), (78, 47111), (84, 47078), (85, 47051), (92, 46952), (95, 46937), (106, 46889), (108, 46880),

Gene: Heather_35 Start: 26803, Stop: 27303, Start Num: 60

Candidate Starts for Heather_35:

(Start: 60 @26803 has 15 MA's), (70, 26884), (75, 26917), (77, 26956), (82, 26992), (92, 27124), (94, 27130), (115, 27250),

Gene: Helmet_93 Start: 48028, Stop: 47501, Start Num: 56

Candidate Starts for Helmet_93:

(21, 48145), (Start: 40 @48034 has 4 MA's), (Start: 42 @48031 has 20 MA's), (Start: 56 @48028 has 23 MA's), (Start: 64 @47992 has 1 MA's), (68, 47959), (74, 47917), (83, 47839), (85, 47809), (92,

47710), (93, 47707), (95, 47695), (96, 47686), (106, 47647), (108, 47638),

Gene: Hexamo_90 Start: 47569, Stop: 47042, Start Num: 56

Candidate Starts for Hexamo_90:

(21, 47686), (Start: 40 @47575 has 4 MA's), (Start: 42 @47572 has 20 MA's), (Start: 56 @47569 has 23 MA's), (Start: 64 @47533 has 1 MA's), (68, 47500), (74, 47458), (83, 47380), (85, 47350), (92, 47251), (93, 47248), (95, 47236), (96, 47227), (106, 47188), (108, 47179),

Gene: Holec_83 Start: 47359, Stop: 46811, Start Num: 47

Candidate Starts for Holec_83:

(Start: 38 @47371 has 1 MA's), (Start: 40 @47368 has 4 MA's), (Start: 42 @47365 has 20 MA's), (Start: 47 @47359 has 19 MA's), (74, 47230), (79, 47167), (82, 47158), (85, 47122), (90, 47041), (95, 47008), (106, 46960), (108, 46951),

Gene: Holli_78 Start: 47049, Stop: 46516, Start Num: 41

Candidate Starts for Holli_78:

(Start: 30 @47094 has 3 MA's), (36, 47061), (Start: 41 @47049 has 133 MA's), (77, 46887), (78, 46878), (85, 46818), (92, 46719), (95, 46704), (106, 46656), (108, 46647),

Gene: Hoot_84 Start: 45405, Stop: 44878, Start Num: 58

Candidate Starts for Hoot_84:

(19, 45543), (21, 45531), (Start: 40 @45420 has 4 MA's), (Start: 42 @45417 has 20 MA's), (Start: 56 @45408 has 23 MA's), (Start: 58 @45405 has 25 MA's), (Start: 64 @45369 has 1 MA's), (68, 45336), (74, 45294), (83, 45216), (85, 45186), (92, 45087), (93, 45084), (106, 45024), (108, 45015),

Gene: HortumSL17_86 Start: 47397, Stop: 46849, Start Num: 47

Candidate Starts for HortumSL17_86:

(Start: 47 @47397 has 19 MA's), (74, 47268), (79, 47205), (82, 47196), (85, 47160), (90, 47079), (95, 47046), (106, 46998), (108, 46989),

Gene: Houdini22_78 Start: 47260, Stop: 46727, Start Num: 41

Candidate Starts for Houdini22_78:

(Start: 30 @47305 has 3 MA's), (36, 47272), (Start: 41 @47260 has 133 MA's), (76, 47116), (77, 47098), (78, 47089), (85, 47029), (92, 46930), (95, 46915), (106, 46867), (108, 46858),

Gene: Huxley_68 Start: 45152, Stop: 44619, Start Num: 41

Candidate Starts for Huxley_68:

(Start: 30 @45197 has 3 MA's), (36, 45164), (Start: 41 @45152 has 133 MA's), (Start: 64 @45104 has 1 MA's), (76, 45008), (77, 44990), (78, 44981), (85, 44921), (92, 44822), (95, 44807), (106, 44759), (108, 44750),

Gene: ICleared_78 Start: 47327, Stop: 46794, Start Num: 41

Candidate Starts for ICleared_78:

(Start: 30 @47372 has 3 MA's), (36, 47339), (Start: 41 @47327 has 133 MA's), (76, 47183), (77, 47165), (78, 47156), (85, 47096), (92, 46997), (95, 46982), (106, 46934), (108, 46925),

Gene: Iceman_77 Start: 47549, Stop: 47016, Start Num: 41

Candidate Starts for Iceman_77:

(Start: 30 @47594 has 3 MA's), (36, 47561), (Start: 41 @47549 has 133 MA's), (76, 47405), (77, 47387), (78, 47378), (85, 47318), (92, 47219), (95, 47204), (106, 47156), (108, 47147),

Gene: Idergollasper_6 Start: 2147, Stop: 1557, Start Num: 44

Candidate Starts for Idergollasper_6:

(Start: 44 @2147 has 29 MA's), (63, 2096), (Start: 64 @2093 has 1 MA's), (74, 2018), (76, 1994), (79, 1952), (84, 1922), (95, 1781), (100, 1730), (105, 1709),

Gene: Imara_6 Start: 2232, Stop: 1642, Start Num: 44

Candidate Starts for Imara_6:

(Start: 44 @2232 has 29 MA's), (63, 2181), (74, 2103), (76, 2079), (77, 2061), (84, 2007), (95, 1866), (100, 1815), (105, 1794),

Gene: Indra_94 Start: 48029, Stop: 47502, Start Num: 56

Candidate Starts for Indra_94:

(21, 48146), (Start: 40 @48035 has 4 MA's), (Start: 42 @48032 has 20 MA's), (Start: 56 @48029 has 23 MA's), (Start: 64 @47993 has 1 MA's), (68, 47960), (74, 47918), (83, 47840), (85, 47810), (92, 47711), (93, 47708), (95, 47696), (96, 47687), (106, 47648), (108, 47639),

Gene: Inventum_68 Start: 44469, Stop: 45092, Start Num: 60

Candidate Starts for Inventum_68:

(29, 44388), (Start: 60 @44469 has 15 MA's), (69, 44544), (74, 44580), (76, 44604), (85, 44691), (92, 44790), (93, 44793), (96, 44814), (98, 44841), (102, 44862),

Gene: Iracema64_79 Start: 47523, Stop: 46990, Start Num: 41

Candidate Starts for Iracema64_79:

(Start: 30 @47568 has 3 MA's), (36, 47535), (Start: 41 @47523 has 133 MA's), (76, 47379), (77, 47361), (78, 47352), (85, 47292), (92, 47193), (95, 47178), (106, 47130), (108, 47121),

Gene: Isiphiwo_85 Start: 47116, Stop: 46589, Start Num: 58

Candidate Starts for Isiphiwo_85:

(21, 47236), (33, 47155), (Start: 40 @47125 has 4 MA's), (Start: 42 @47122 has 20 MA's), (Start: 56 @47119 has 23 MA's), (Start: 58 @47116 has 25 MA's), (Start: 64 @47080 has 1 MA's), (74, 47005), (76, 46984), (83, 46927), (85, 46897), (87, 46882), (92, 46798), (106, 46735), (108, 46726),

Gene: Jamun_39 Start: 27180, Stop: 27779, Start Num: 50

Candidate Starts for Jamun_39:

(Start: 50 @27180 has 24 MA's), (75, 27309), (77, 27348), (79, 27372), (85, 27417), (88, 27444), (92, 27516), (95, 27531), (98, 27567), (101, 27588), (107, 27618), (114, 27699), (118, 27768),

Gene: JangDynasty_6 Start: 2236, Stop: 1646, Start Num: 44

Candidate Starts for JangDynasty_6:

(Start: 44 @2236 has 29 MA's), (63, 2185), (Start: 64 @2182 has 1 MA's), (74, 2107), (76, 2083), (79, 2041), (84, 2011), (95, 1870), (100, 1819), (105, 1798),

Gene: Jaykayelowell_76 Start: 47252, Stop: 46719, Start Num: 41

Candidate Starts for Jaykayelowell_76:

(Start: 30 @47297 has 3 MA's), (36, 47264), (Start: 41 @47252 has 133 MA's), (77, 47090), (78, 47081), (85, 47021), (92, 46922), (95, 46907), (106, 46859), (108, 46850),

Gene: Jeffabunny_79 Start: 44172, Stop: 43645, Start Num: 56

Candidate Starts for Jeffabunny_79:

(21, 44289), (Start: 40 @44178 has 4 MA's), (Start: 42 @44175 has 20 MA's), (Start: 56 @44172 has 23 MA's), (Start: 64 @44136 has 1 MA's), (68, 44103), (74, 44061), (83, 43983), (85, 43953), (92, 43854), (93, 43851), (95, 43839), (96, 43830), (106, 43791), (108, 43782),

Gene: JetBlade_80 Start: 47287, Stop: 46754, Start Num: 41

Candidate Starts for JetBlade_80:

(Start: 30 @47332 has 3 MA's), (36, 47299), (Start: 41 @47287 has 133 MA's), (76, 47143), (77, 47125), (78, 47116), (85, 47056), (92, 46957), (95, 46942), (106, 46894), (108, 46885),

Gene: JewelBug_81 Start: 45884, Stop: 45357, Start Num: 58

Candidate Starts for JewelBug_81:

(19, 46022), (21, 46010), (Start: 40 @45899 has 4 MA's), (Start: 42 @45896 has 20 MA's), (Start: 56 @45887 has 23 MA's), (Start: 58 @45884 has 25 MA's), (Start: 64 @45848 has 1 MA's), (74, 45773), (76, 45752), (83, 45695), (85, 45665), (87, 45650), (92, 45566), (106, 45503), (108, 45494),

Gene: Jiawan_82 Start: 47375, Stop: 46827, Start Num: 47

Candidate Starts for Jiawan_82:

(Start: 47 @47375 has 19 MA's), (74, 47246), (79, 47183), (82, 47174), (85, 47138), (90, 47057), (95, 47024), (106, 46976), (108, 46967),

Gene: JoongJeon_78 Start: 47253, Stop: 46720, Start Num: 41

Candidate Starts for JoongJeon_78:

(Start: 30 @47298 has 3 MA's), (36, 47265), (Start: 41 @47253 has 133 MA's), (76, 47109), (77, 47091), (78, 47082), (85, 47022), (92, 46923), (95, 46908), (106, 46860), (108, 46851),

Gene: Jordennis_87 Start: 47791, Stop: 47261, Start Num: 56

Candidate Starts for Jordennis_87:

(19, 47926), (21, 47914), (Start: 40 @47803 has 4 MA's), (Start: 42 @47800 has 20 MA's), (Start: 56 @47791 has 23 MA's), (Start: 58 @47788 has 25 MA's), (Start: 64 @47752 has 1 MA's), (74, 47677), (76, 47656), (83, 47599), (85, 47569), (87, 47554), (92, 47470), (106, 47407), (108, 47398),

Gene: Jumbo_35 Start: 41371, Stop: 41904, Start Num: 47

Candidate Starts for Jumbo_35:

(Start: 47 @41371 has 19 MA's), (66, 41437), (75, 41518), (94, 41728), (112, 41782),

Gene: Juno112_41 Start: 26811, Stop: 27410, Start Num: 50

Candidate Starts for Juno112_41:

(Start: 50 @26811 has 24 MA's), (75, 26934), (77, 26973), (82, 27006), (85, 27042), (88, 27069), (92, 27141), (95, 27156), (98, 27192), (101, 27213), (114, 27324), (119, 27405),

Gene: KFPoly_78 Start: 47253, Stop: 46720, Start Num: 41

Candidate Starts for KFPoly_78:

(Start: 30 @47298 has 3 MA's), (36, 47265), (Start: 41 @47253 has 133 MA's), (76, 47109), (77, 47091), (78, 47082), (85, 47022), (92, 46923), (95, 46908), (106, 46860), (108, 46851),

Gene: KHumphrey_42 Start: 26810, Stop: 27418, Start Num: 50

Candidate Starts for KHumphrey_42:

(Start: 50 @26810 has 24 MA's), (75, 26933), (77, 26972), (79, 26996), (82, 27005), (85, 27041), (88, 27068), (92, 27140), (93, 27143), (95, 27155), (98, 27191), (101, 27212), (112, 27272), (120, 27413),

Gene: Kampy_78 Start: 47262, Stop: 46729, Start Num: 41

Candidate Starts for Kampy_78:

(Start: 30 @47307 has 3 MA's), (36, 47274), (Start: 41 @47262 has 133 MA's), (76, 47118), (77, 47100), (78, 47091), (85, 47031), (92, 46932), (95, 46917), (106, 46869), (108, 46860),

Gene: Katalie136_76 Start: 47053, Stop: 46520, Start Num: 41

Candidate Starts for Katalie136_76:

(13, 47248), (16, 47206), (21, 47170), (22, 47158), (Start: 27 @47104 has 1 MA's), (Start: 41 @47053 has 133 MA's), (77, 46891), (85, 46822), (92, 46723), (95, 46708), (106, 46660), (108, 46651),

Gene: Kazan_90 Start: 47560, Stop: 47033, Start Num: 58

Candidate Starts for Kazan_90:

(21, 47680), (33, 47599), (Start: 40 @47569 has 4 MA's), (Start: 42 @47566 has 20 MA's), (Start: 56 @47563 has 23 MA's), (Start: 58 @47560 has 25 MA's), (Start: 64 @47524 has 1 MA's), (74, 47449), (76, 47428), (83, 47371), (85, 47341), (87, 47326), (92, 47242), (106, 47179), (108, 47170),

Gene: KekoraPapaka_76 Start: 47271, Stop: 46726, Start Num: 36

Candidate Starts for KekoraPapaka_76:

(Start: 30 @47304 has 3 MA's), (36, 47271), (Start: 41 @47259 has 133 MA's), (76, 47115), (77, 47097), (78, 47088), (85, 47028), (92, 46929), (95, 46914), (106, 46866), (108, 46857),

Gene: KendraB23_50 Start: 28188, Stop: 28781, Start Num: 50

Candidate Starts for KendraB23_50:

(Start: 50 @28188 has 24 MA's), (67, 28254), (75, 28311), (77, 28350), (79, 28374), (88, 28446), (92, 28518), (95, 28533), (98, 28569), (101, 28590), (107, 28620), (114, 28701), (118, 28770),

Gene: Keziacharles14_82 Start: 47898, Stop: 47347, Start Num: 42

Candidate Starts for Keziacharles14_82:

(Start: 42 @47898 has 20 MA's), (Start: 47 @47895 has 19 MA's), (76, 47745), (79, 47703), (83, 47688), (85, 47658), (90, 47577), (91, 47574), (95, 47544), (106, 47496), (108, 47487),

Gene: KingPhillip3_6 Start: 2147, Stop: 1557, Start Num: 44

Candidate Starts for KingPhillip3_6:

(Start: 44 @2147 has 29 MA's), (63, 2096), (Start: 64 @2093 has 1 MA's), (74, 2018), (76, 1994), (79, 1952), (84, 1922), (95, 1781), (100, 1730), (105, 1709),

Gene: Kingmustik0402_79 Start: 47248, Stop: 46715, Start Num: 41

Candidate Starts for Kingmustik0402_79:

(Start: 30 @47293 has 3 MA's), (36, 47260), (Start: 41 @47248 has 133 MA's), (76, 47104), (77, 47086), (78, 47077), (85, 47017), (92, 46918), (95, 46903), (106, 46855), (108, 46846),

Gene: Kingsley_70 Start: 46174, Stop: 46698, Start Num: 60

Candidate Starts for Kingsley_70:

(29, 46093), (Start: 60 @46174 has 15 MA's), (74, 46285), (76, 46309), (85, 46396), (92, 46495), (93, 46498), (96, 46519), (98, 46546), (102, 46567),

Gene: Kipper29_89 Start: 47563, Stop: 47036, Start Num: 58

Candidate Starts for Kipper29_89:

(19, 47701), (21, 47689), (Start: 40 @47578 has 4 MA's), (Start: 42 @47575 has 20 MA's), (Start: 56 @47566 has 23 MA's), (Start: 58 @47563 has 25 MA's), (Start: 64 @47527 has 1 MA's), (74, 47452), (76, 47431), (83, 47374), (85, 47344), (87, 47329), (92, 47245), (106, 47182), (108, 47173),

Gene: KittenMittens_75 Start: 46212, Stop: 45673, Start Num: 42

Candidate Starts for KittenMittens_75:

(Start: 27 @46266 has 1 MA's), (Start: 42 @46212 has 20 MA's), (Start: 64 @46167 has 1 MA's), (74, 46092), (83, 46014), (85, 45984), (95, 45870), (106, 45822), (108, 45813), (112, 45792),

Gene: Klodlith_81 Start: 46808, Stop: 46257, Start Num: 38

Candidate Starts for Klodlith_81:

(7, 47081), (12, 47000), (Start: 38 @46808 has 1 MA's), (Start: 40 @46805 has 4 MA's), (Start: 58 @46787 has 25 MA's), (66, 46739), (74, 46676), (76, 46655), (79, 46613), (81, 46607), (83, 46598), (85, 46568), (90, 46487), (95, 46454), (106, 46406), (108, 46397),

Gene: Koan_76 Start: 47259, Stop: 46726, Start Num: 41

Candidate Starts for Koan_76:

(Start: 30 @47304 has 3 MA's), (36, 47271), (Start: 41 @47259 has 133 MA's), (76, 47115), (77, 47097), (78, 47088), (85, 47028), (92, 46929), (95, 46914), (106, 46866), (108, 46857),

Gene: Koko_92 Start: 48418, Stop: 47891, Start Num: 56

Candidate Starts for Koko_92:

(21, 48535), (Start: 40 @48424 has 4 MA's), (Start: 42 @48421 has 20 MA's), (Start: 56 @48418 has 23 MA's), (Start: 64 @48382 has 1 MA's), (68, 48349), (74, 48307), (83, 48229), (85, 48199), (92, 48100), (93, 48097), (95, 48085), (96, 48076), (106, 48037), (108, 48028),

Gene: Koreni_78 Start: 46940, Stop: 46407, Start Num: 41

Candidate Starts for Koreni_78:

(Start: 30 @46985 has 3 MA's), (36, 46952), (Start: 41 @46940 has 133 MA's), (76, 46796), (77, 46778), (78, 46769), (85, 46709), (92, 46610), (95, 46595), (106, 46547), (108, 46538),

Gene: Kratark_78 Start: 47293, Stop: 46760, Start Num: 41

Candidate Starts for Kratark_78:

(Start: 30 @47338 has 3 MA's), (36, 47305), (Start: 41 @47293 has 133 MA's), (76, 47149), (77, 47131), (78, 47122), (85, 47062), (92, 46963), (95, 46948), (106, 46900), (108, 46891),

Gene: Kremtemulon_76 Start: 47139, Stop: 46606, Start Num: 41

Candidate Starts for Kremtemulon_76:

(Start: 30 @47184 has 3 MA's), (36, 47151), (Start: 41 @47139 has 133 MA's), (76, 46995), (77, 46977), (78, 46968), (85, 46908), (92, 46809), (95, 46794), (106, 46746), (108, 46737),

Gene: Krili_6 Start: 2098, Stop: 1508, Start Num: 44

Candidate Starts for Krili_6:

(17, 2251), (26, 2176), (35, 2119), (Start: 38 @2107 has 1 MA's), (Start: 44 @2098 has 29 MA's), (63, 2047), (Start: 64 @2044 has 1 MA's), (74, 1969), (76, 1945), (79, 1903), (84, 1873), (95, 1732), (100, 1681), (105, 1660),

Gene: Kristoff_77 Start: 47480, Stop: 46941, Start Num: 42

Candidate Starts for Kristoff_77:

(Start: 27 @47534 has 1 MA's), (Start: 42 @47480 has 20 MA's), (Start: 64 @47435 has 1 MA's), (74, 47360), (83, 47282), (85, 47252), (90, 47171), (95, 47138), (96, 47129), (106, 47090), (108, 47081), (112, 47060),

Gene: Kyee_79 Start: 47254, Stop: 46721, Start Num: 41

Candidate Starts for Kyee_79:

(Start: 30 @47299 has 3 MA's), (36, 47266), (Start: 41 @47254 has 133 MA's), (76, 47110), (77, 47092), (78, 47083), (85, 47023), (92, 46924), (95, 46909), (106, 46861), (108, 46852),

Gene: LHTSCC_81 Start: 47699, Stop: 47166, Start Num: 41

Candidate Starts for LHTSCC_81:

(Start: 30 @47744 has 3 MA's), (36, 47711), (Start: 41 @47699 has 133 MA's), (76, 47555), (77, 47537), (78, 47528), (85, 47468), (92, 47369), (106, 47306), (108, 47297),

Gene: Laphuphu24k_41 Start: 26795, Stop: 27394, Start Num: 50

Candidate Starts for Laphuphu24k_41:

(Start: 50 @26795 has 24 MA's), (75, 26918), (77, 26957), (82, 26990), (85, 27026), (88, 27053), (92, 27125), (95, 27140), (98, 27176), (101, 27197), (114, 27308), (119, 27389),

Gene: LappelDuVide_79 Start: 47304, Stop: 46726, Start Num: 30

Candidate Starts for LappelDuVide_79:

(Start: 30 @47304 has 3 MA's), (36, 47271), (Start: 41 @47259 has 133 MA's), (77, 47097), (78, 47088), (85, 47028), (92, 46929), (95, 46914), (106, 46866), (108, 46857),

Gene: Lemur_79 Start: 47256, Stop: 46723, Start Num: 41

Candidate Starts for Lemur_79:

(Start: 30 @47301 has 3 MA's), (36, 47268), (Start: 41 @47256 has 133 MA's), (76, 47112), (77, 47094), (78, 47085), (85, 47025), (92, 46926), (95, 46911), (106, 46863), (108, 46854),

Gene: Leona_41 Start: 26885, Stop: 27487, Start Num: 50

Candidate Starts for Leona_41:

(Start: 50 @26885 has 24 MA's), (67, 26942), (75, 26999), (77, 27038), (82, 27071), (85, 27107), (88, 27134), (92, 27206), (95, 27221), (98, 27257), (101, 27278), (114, 27389),

Gene: Lilbooboo_32 Start: 25803, Stop: 26303, Start Num: 60

Candidate Starts for Lilbooboo_32:

(Start: 60 @25803 has 15 MA's), (Start: 64 @25839 has 1 MA's), (75, 25917), (77, 25956), (94, 26130), (111, 26172), (115, 26250),

Gene: Lilleskat_82 Start: 47356, Stop: 46808, Start Num: 47

Candidate Starts for Lilleskat_82:

(Start: 38 @47368 has 1 MA's), (Start: 40 @47365 has 4 MA's), (Start: 42 @47362 has 20 MA's), (Start: 47 @47356 has 19 MA's), (74, 47227), (79, 47164), (82, 47155), (85, 47119), (90, 47038), (95, 47005), (106, 46957), (108, 46948),

Gene: LittleB_79 Start: 47260, Stop: 46727, Start Num: 41

Candidate Starts for LittleB_79:

(Start: 30 @47305 has 3 MA's), (36, 47272), (Start: 41 @47260 has 133 MA's), (76, 47116), (77, 47098), (78, 47089), (85, 47029), (92, 46930), (95, 46915), (106, 46867), (108, 46858),

Gene: LittleGuy_79 Start: 47144, Stop: 46611, Start Num: 41

Candidate Starts for LittleGuy_79:

(Start: 30 @47189 has 3 MA's), (36, 47156), (Start: 41 @47144 has 133 MA's), (76, 47000), (77, 46982), (78, 46973), (85, 46913), (92, 46814), (95, 46799), (106, 46751), (108, 46742),

Gene: LochMonster_80 Start: 47496, Stop: 46963, Start Num: 41

Candidate Starts for LochMonster_80:

(Start: 30 @47541 has 3 MA's), (36, 47508), (Start: 41 @47496 has 133 MA's), (76, 47352), (77, 47334), (78, 47325), (85, 47265), (92, 47166), (95, 47151), (106, 47103), (108, 47094),

Gene: LoneWolf_85 Start: 47414, Stop: 46863, Start Num: 46

Candidate Starts for LoneWolf_85:

(37, 47426), (Start: 38 @47423 has 1 MA's), (Start: 40 @47420 has 4 MA's), (Start: 42 @47417 has 20 MA's), (Start: 46 @47414 has 7 MA's), (79, 47219), (83, 47204), (85, 47174), (90, 47093), (95, 47060), (106, 47012), (108, 47003),

Gene: Lorenzo_79 Start: 47257, Stop: 46724, Start Num: 41

Candidate Starts for Lorenzo_79:

(Start: 30 @47302 has 3 MA's), (36, 47269), (Start: 41 @47257 has 133 MA's), (77, 47095), (78, 47086), (85, 47026), (92, 46927), (95, 46912), (106, 46864), (108, 46855),

Gene: Lucyedi_88 Start: 49378, Stop: 48842, Start Num: 54

Candidate Starts for Lucyedi_88:

(Start: 51 @49381 has 2 MA's), (Start: 54 @49378 has 1 MA's), (Start: 64 @49336 has 1 MA's), (74, 49261), (83, 49183), (85, 49153), (87, 49138), (90, 49072), (95, 49039), (106, 48991), (108, 48982), (112, 48961),

Gene: Lunsford_79 Start: 47252, Stop: 46719, Start Num: 41

Candidate Starts for Lunsford_79:

(Start: 30 @47297 has 3 MA's), (36, 47264), (Start: 41 @47252 has 133 MA's), (77, 47090), (78, 47081), (85, 47021), (92, 46922), (95, 46907), (106, 46859), (108, 46850),

Gene: MadKillah_6 Start: 2098, Stop: 1508, Start Num: 44

Candidate Starts for MadKillah_6:

(17, 2251), (26, 2176), (35, 2119), (Start: 38 @2107 has 1 MA's), (Start: 44 @2098 has 29 MA's), (63, 2047), (Start: 64 @2044 has 1 MA's), (74, 1969), (76, 1945), (79, 1903), (84, 1873), (95, 1732), (100, 1681), (105, 1660),

Gene: Maminiaina_84 Start: 47329, Stop: 46778, Start Num: 46

Candidate Starts for Maminiaina_84:

(Start: 38 @47338 has 1 MA's), (Start: 40 @47335 has 4 MA's), (Start: 42 @47332 has 20 MA's), (Start: 46 @47329 has 7 MA's), (66, 47260), (76, 47176), (79, 47134), (83, 47119), (91, 47005), (95, 46975), (106, 46927), (108, 46918),

Gene: Maverick_78 Start: 47256, Stop: 46723, Start Num: 41

Candidate Starts for Maverick_78:

(Start: 30 @47301 has 3 MA's), (36, 47268), (Start: 41 @47256 has 133 MA's), (76, 47112), (77, 47094), (78, 47085), (85, 47025), (92, 46926), (95, 46911), (106, 46863), (108, 46854),

Gene: Maxo_81 Start: 47262, Stop: 46729, Start Num: 41

Candidate Starts for Maxo_81:

(Start: 30 @47307 has 3 MA's), (36, 47274), (Start: 41 @47262 has 133 MA's), (76, 47118), (77, 47100), (78, 47091), (85, 47031), (92, 46932), (95, 46917), (106, 46869), (108, 46860),

Gene: Mazhar510_79 Start: 47257, Stop: 46724, Start Num: 41

Candidate Starts for Mazhar510_79:

(Start: 30 @47302 has 3 MA's), (36, 47269), (Start: 41 @47257 has 133 MA's), (76, 47113), (77, 47095), (78, 47086), (85, 47026), (92, 46927), (95, 46912), (106, 46864), (108, 46855),

Gene: McFly_89 Start: 47899, Stop: 47372, Start Num: 58

Candidate Starts for McFly_89:

(21, 48019), (33, 47938), (Start: 40 @47908 has 4 MA's), (Start: 42 @47905 has 20 MA's), (Start: 56 @47902 has 23 MA's), (Start: 58 @47899 has 25 MA's), (Start: 64 @47863 has 1 MA's), (74, 47788), (76, 47767), (83, 47710), (85, 47680), (87, 47665), (92, 47581), (106, 47518), (108, 47509),

Gene: Medusa_78 Start: 47272, Stop: 46739, Start Num: 41

Candidate Starts for Medusa_78:

(Start: 30 @47317 has 3 MA's), (36, 47284), (Start: 41 @47272 has 133 MA's), (77, 47110), (78, 47101), (85, 47041), (92, 46942), (95, 46927), (106, 46879), (108, 46870),

Gene: MeeZee_78 Start: 47253, Stop: 46720, Start Num: 41

Candidate Starts for MeeZee_78:

(Start: 30 @47298 has 3 MA's), (36, 47265), (Start: 41 @47253 has 133 MA's), (77, 47091), (78, 47082), (85, 47022), (92, 46923), (95, 46908), (106, 46860), (108, 46851),

Gene: MegTheThird_81 Start: 46812, Stop: 46246, Start Num: 38

Candidate Starts for MegTheThird_81:

(Start: 38 @46812 has 1 MA's), (Start: 40 @46809 has 4 MA's), (79, 46617), (83, 46602), (85, 46572), (90, 46491), (95, 46458), (106, 46410), (108, 46401),

Gene: Melvin_81 Start: 47254, Stop: 46721, Start Num: 41

Candidate Starts for Melvin_81:

(Start: 30 @47299 has 3 MA's), (36, 47266), (Start: 41 @47254 has 133 MA's), (76, 47110), (77, 47092), (78, 47083), (85, 47023), (92, 46924), (95, 46909), (106, 46861), (108, 46852),

Gene: Millski_78 Start: 47260, Stop: 46727, Start Num: 41

Candidate Starts for Millski_78:

(Start: 30 @47305 has 3 MA's), (36, 47272), (Start: 41 @47260 has 133 MA's), (77, 47098), (78, 47089), (85, 47029), (92, 46930), (95, 46915), (106, 46867), (108, 46858),

Gene: Minispark_82 Start: 46808, Stop: 46260, Start Num: 47

Candidate Starts for Minispark_82:

(1, 47390), (21, 46931), (Start: 38 @46820 has 1 MA's), (Start: 40 @46817 has 4 MA's), (Start: 46 @46811 has 7 MA's), (Start: 47 @46808 has 19 MA's), (76, 46658), (79, 46616), (83, 46601), (85, 46571), (90, 46490), (95, 46457), (106, 46409), (108, 46400),

Gene: Miramae_79 Start: 47083, Stop: 46541, Start Num: 41

Candidate Starts for Miramae_79:

(Start: 41 @47083 has 133 MA's), (Start: 64 @47035 has 1 MA's), (Start: 65 @47029 has 1 MA's), (67, 47014), (76, 46939), (77, 46921), (78, 46912), (85, 46852), (92, 46753), (95, 46738), (106, 46690), (108, 46681),

Gene: Mori_6 Start: 2098, Stop: 1508, Start Num: 44

Candidate Starts for Mori_6:

(17, 2251), (26, 2176), (35, 2119), (Start: 38 @2107 has 1 MA's), (Start: 44 @2098 has 29 MA's), (63, 2047), (Start: 64 @2044 has 1 MA's), (74, 1969), (76, 1945), (79, 1903), (84, 1873), (95, 1732), (100, 1681), (105, 1660),

Gene: Morpher26_76 Start: 47074, Stop: 46541, Start Num: 41

Candidate Starts for Morpher26_76:

(13, 47269), (16, 47227), (21, 47191), (22, 47179), (Start: 27 @47125 has 1 MA's), (Start: 41 @47074 has 133 MA's), (77, 46912), (85, 46843), (92, 46744), (95, 46729), (106, 46681), (108, 46672),

Gene: Morrow_81 Start: 47299, Stop: 46766, Start Num: 41

Candidate Starts for Morrow_81:

(Start: 30 @47344 has 3 MA's), (36, 47311), (Start: 41 @47299 has 133 MA's), (77, 47137), (78, 47128), (85, 47068), (92, 46969), (95, 46954), (106, 46906), (108, 46897),

Gene: Mundrea_78 Start: 47310, Stop: 46768, Start Num: 41

Candidate Starts for Mundrea_78:

(6, 47640), (16, 47463), (21, 47427), (Start: 27 @47361 has 1 MA's), (36, 47322), (Start: 41 @47310 has 133 MA's), (76, 47166), (77, 47148), (78, 47139), (85, 47079), (92, 46980), (95, 46965), (106, 46917), (108, 46908),

Gene: Murai_6 Start: 2098, Stop: 1508, Start Num: 44

Candidate Starts for Murai_6:

(17, 2251), (26, 2176), (35, 2119), (Start: 38 @2107 has 1 MA's), (Start: 44 @2098 has 29 MA's), (63, 2047), (Start: 64 @2044 has 1 MA's), (74, 1969), (76, 1945), (79, 1903), (84, 1873), (95, 1732), (100, 1681), (105, 1660),

Gene: Myxus_85 Start: 47397, Stop: 46849, Start Num: 47

Candidate Starts for Myxus_85:

(Start: 47 @47397 has 19 MA's), (74, 47268), (79, 47205), (82, 47196), (85, 47160), (90, 47079), (95, 47046), (106, 46998), (108, 46989),

Gene: Nebs_80 Start: 47299, Stop: 46766, Start Num: 41

Candidate Starts for Nebs_80:

(Start: 30 @47344 has 3 MA's), (36, 47311), (Start: 41 @47299 has 133 MA's), (76, 47155), (77, 47137), (78, 47128), (85, 47068), (92, 46969), (95, 46954), (106, 46906), (108, 46897),

Gene: Neeharika16_88 Start: 47653, Stop: 47123, Start Num: 56

Candidate Starts for Neeharika16_88:

(19, 47788), (21, 47776), (Start: 40 @47665 has 4 MA's), (Start: 42 @47662 has 20 MA's), (Start: 56 @47653 has 23 MA's), (Start: 58 @47650 has 25 MA's), (Start: 64 @47614 has 1 MA's), (74, 47539), (76, 47518), (83, 47461), (85, 47431), (87, 47416), (92, 47332), (106, 47269), (108, 47260),

Gene: Nemo27_78 Start: 47255, Stop: 46722, Start Num: 41

Candidate Starts for Nemo27_78:

(Start: 30 @47300 has 3 MA's), (36, 47267), (Start: 41 @47255 has 133 MA's), (76, 47111), (77, 47093), (78, 47084), (85, 47024), (92, 46925), (95, 46910), (106, 46862), (108, 46853),

Gene: Newrala_88 Start: 47996, Stop: 47469, Start Num: 58

Candidate Starts for Newrala_88:

(19, 48134), (21, 48122), (Start: 40 @48011 has 4 MA's), (Start: 42 @48008 has 20 MA's), (Start: 56 @47999 has 23 MA's), (Start: 58 @47996 has 25 MA's), (Start: 64 @47960 has 1 MA's), (74, 47885), (76, 47864), (83, 47807), (85, 47777), (87, 47762), (92, 47678), (106, 47615), (108, 47606),

Gene: Niblet_43 Start: 27570, Stop: 28169, Start Num: 50

Candidate Starts for Niblet_43:

(Start: 50 @27570 has 24 MA's), (75, 27699), (77, 27738), (79, 27762), (85, 27807), (88, 27834), (92, 27906), (95, 27921), (98, 27957), (101, 27978), (107, 28008), (114, 28089), (118, 28158),

Gene: NiebruSaylor_6 Start: 2098, Stop: 1508, Start Num: 44

Candidate Starts for NiebruSaylor_6:

(17, 2251), (26, 2176), (35, 2119), (Start: 38 @2107 has 1 MA's), (Start: 44 @2098 has 29 MA's), (63, 2047), (Start: 64 @2044 has 1 MA's), (74, 1969), (76, 1945), (79, 1903), (84, 1873), (95, 1732), (100, 1681), (105, 1660),

Gene: Noelle_77 Start: 47280, Stop: 46744, Start Num: 40

Candidate Starts for Noelle_77:

(Start: 27 @47331 has 1 MA's), (Start: 40 @47280 has 4 MA's), (74, 47163), (85, 47055), (95, 46941), (106, 46893), (108, 46884), (112, 46863),

Gene: NorthStar_76 Start: 47259, Stop: 46726, Start Num: 41

Candidate Starts for NorthStar_76:

(Start: 30 @47304 has 3 MA's), (36, 47271), (Start: 41 @47259 has 133 MA's), (76, 47115), (77, 47097), (78, 47088), (85, 47028), (92, 46929), (95, 46914), (106, 46866), (108, 46857),

Gene: NotAPhaseMom_78 Start: 47260, Stop: 46727, Start Num: 41

Candidate Starts for NotAPhaseMom_78:

(Start: 30 @47305 has 3 MA's), (36, 47272), (Start: 41 @47260 has 133 MA's), (76, 47116), (77, 47098), (78, 47089), (85, 47029), (92, 46930), (95, 46915), (106, 46867), (108, 46858),

Gene: Nyxis_78 Start: 47138, Stop: 46605, Start Num: 41

Candidate Starts for Nyxis_78:

(Start: 30 @47183 has 3 MA's), (36, 47150), (Start: 41 @47138 has 133 MA's), (77, 46976), (78, 46967), (85, 46907), (92, 46808), (95, 46793), (106, 46745), (108, 46736),

Gene: OKCentral2016_78 Start: 46283, Stop: 45744, Start Num: 42

Candidate Starts for OKCentral2016_78:

(Start: 27 @46337 has 1 MA's), (Start: 42 @46283 has 20 MA's), (Start: 64 @46238 has 1 MA's), (74, 46163), (76, 46142), (85, 46055), (90, 45974), (95, 45941), (96, 45932), (106, 45893), (108, 45884), (112, 45863),

Gene: OKaNui_78 Start: 47310, Stop: 46777, Start Num: 41

Candidate Starts for OKaNui_78:

(Start: 30 @47355 has 3 MA's), (36, 47322), (Start: 41 @47310 has 133 MA's), (76, 47166), (77, 47148), (78, 47139), (85, 47079), (92, 46980), (95, 46965), (106, 46917), (108, 46908),

Gene: Obama12_80 Start: 47683, Stop: 47150, Start Num: 41

Candidate Starts for Obama12_80:

(Start: 30 @47728 has 3 MA's), (36, 47695), (Start: 41 @47683 has 133 MA's), (76, 47539), (77, 47521), (78, 47512), (85, 47452), (92, 47353), (95, 47338), (106, 47290), (108, 47281),

Gene: Ohfah_80 Start: 47299, Stop: 46766, Start Num: 41

Candidate Starts for Ohfah_80:

(Start: 30 @47344 has 3 MA's), (36, 47311), (Start: 41 @47299 has 133 MA's), (76, 47155), (77, 47137), (78, 47128), (85, 47068), (92, 46969), (95, 46954), (106, 46906), (108, 46897),

Gene: Onglai_83 Start: 45547, Stop: 44999, Start Num: 47

Candidate Starts for Onglai_83:

(Start: 47 @45547 has 19 MA's), (74, 45418), (79, 45355), (82, 45346), (85, 45310), (90, 45229), (95, 45196), (106, 45148), (108, 45139),

Gene: Oppalora_41 Start: 26809, Stop: 27408, Start Num: 50

Candidate Starts for Oppalora_41:

(Start: 50 @26809 has 24 MA's), (75, 26932), (77, 26971), (82, 27004), (85, 27040), (88, 27067), (92, 27139), (95, 27154), (98, 27190), (101, 27211), (114, 27322), (119, 27403),

Gene: Orcanus_40 Start: 27545, Stop: 28138, Start Num: 50

Candidate Starts for Orcanus_40:

(Start: 50 @27545 has 24 MA's), (75, 27668), (77, 27707), (79, 27731), (88, 27803), (92, 27875), (95, 27890), (98, 27926), (101, 27947), (107, 27977), (114, 28058), (118, 28127),

Gene: PainterBoy_87 Start: 49092, Stop: 48553, Start Num: 51

Candidate Starts for PainterBoy_87:

(Start: 51 @49092 has 2 MA's), (Start: 54 @49089 has 1 MA's), (Start: 64 @49047 has 1 MA's), (74, 48972), (83, 48894), (85, 48864), (87, 48849), (90, 48783), (95, 48750), (106, 48702), (108, 48693), (112, 48672),

Gene: Palestino_78 Start: 47256, Stop: 46723, Start Num: 41

Candidate Starts for Palestino_78:

(Start: 30 @47301 has 3 MA's), (36, 47268), (Start: 41 @47256 has 133 MA's), (76, 47112), (77, 47094), (78, 47085), (85, 47025), (92, 46926), (95, 46911), (106, 46863), (108, 46854),

Gene: PeaceMeal1_76 Start: 46213, Stop: 45674, Start Num: 42

Candidate Starts for PeaceMeal1_76:

(Start: 27 @46267 has 1 MA's), (Start: 42 @46213 has 20 MA's), (Start: 64 @46168 has 1 MA's), (74, 46093), (83, 46015), (85, 45985), (95, 45871), (106, 45823), (108, 45814), (112, 45793),

Gene: Peaches_77 Start: 47258, Stop: 46725, Start Num: 41

Candidate Starts for Peaches_77:

(Start: 30 @47303 has 3 MA's), (36, 47270), (Start: 41 @47258 has 133 MA's), (76, 47114), (77, 47096), (78, 47087), (85, 47027), (92, 46928), (95, 46913), (106, 46865), (108, 46856),

Gene: Pelletreau_49 Start: 27995, Stop: 28594, Start Num: 50

Candidate Starts for Pelletreau_49:

(Start: 50 @27995 has 24 MA's), (67, 28067), (75, 28124), (77, 28163), (79, 28187), (88, 28259), (92, 28331), (95, 28346), (98, 28382), (101, 28403), (107, 28433), (114, 28514), (118, 28583),

Gene: Perplexer_76 Start: 47054, Stop: 46521, Start Num: 41

Candidate Starts for Perplexer_76:

(13, 47249), (16, 47207), (21, 47171), (22, 47159), (Start: 27 @47105 has 1 MA's), (Start: 41 @47054 has 133 MA's), (77, 46892), (85, 46823), (92, 46724), (95, 46709), (106, 46661), (108, 46652),

Gene: PeterPeter_79 Start: 47253, Stop: 46720, Start Num: 41

Candidate Starts for PeterPeter_79:

(Start: 30 @47298 has 3 MA's), (36, 47265), (Start: 41 @47253 has 133 MA's), (76, 47109), (77, 47091), (78, 47082), (85, 47022), (92, 46923), (95, 46908), (106, 46860), (108, 46851),

Gene: PetiteSangsue_76 Start: 47057, Stop: 46524, Start Num: 41

Candidate Starts for PetiteSangsue_76:

(13, 47252), (16, 47210), (21, 47174), (22, 47162), (Start: 27 @47108 has 1 MA's), (Start: 41 @47057 has 133 MA's), (77, 46895), (85, 46826), (92, 46727), (95, 46712), (106, 46664), (108, 46655),

Gene: Phacado_79 Start: 47255, Stop: 46722, Start Num: 41

Candidate Starts for Phacado_79:

(Start: 30 @47300 has 3 MA's), (36, 47267), (Start: 41 @47255 has 133 MA's), (76, 47111), (77, 47093), (78, 47084), (85, 47024), (92, 46925), (95, 46910), (106, 46862), (108, 46853),

Gene: Phaeder_85 Start: 47272, Stop: 46724, Start Num: 47

Candidate Starts for Phaeder_85:

(Start: 47 @47272 has 19 MA's), (74, 47143), (79, 47080), (82, 47071), (85, 47035), (90, 46954), (95, 46921), (106, 46873), (108, 46864),

Gene: Pharaoh_79 Start: 48294, Stop: 47764, Start Num: 55

Candidate Starts for Pharaoh_79:

(Start: 38 @48306 has 1 MA's), (Start: 55 @48294 has 2 MA's), (74, 48180), (76, 48159), (83, 48102), (85, 48072), (91, 47988), (95, 47958), (106, 47910), (108, 47901),

Gene: Phelipe_80 Start: 47299, Stop: 46766, Start Num: 41

Candidate Starts for Phelipe_80:

(Start: 30 @47344 has 3 MA's), (36, 47311), (Start: 41 @47299 has 133 MA's), (76, 47155), (77, 47137), (78, 47128), (85, 47068), (92, 46969), (95, 46954), (106, 46906), (108, 46897),

Gene: Phighter1804_79 Start: 47320, Stop: 46787, Start Num: 41

Candidate Starts for Phighter1804_79:

(Start: 30 @47365 has 3 MA's), (36, 47332), (Start: 41 @47320 has 133 MA's), (76, 47176), (77, 47158), (78, 47149), (85, 47089), (92, 46990), (95, 46975), (106, 46927), (108, 46918),

Gene: Phlei_64 Start: 44228, Stop: 43716, Start Num: 56

Candidate Starts for Phlei_64:

(Start: 56 @44228 has 23 MA's), (Start: 64 @44189 has 1 MA's), (74, 44114), (84, 44033), (85, 44006), (95, 43892), (97, 43880), (110, 43832), (113, 43787),

Gene: PhlipPhlop_68 Start: 47129, Stop: 47779, Start Num: 60

Candidate Starts for PhlipPhlop_68:

(11, 46880), (14, 46910), (24, 47006), (29, 47048), (Start: 60 @47129 has 15 MA's), (62, 47144), (74, 47240), (76, 47264), (85, 47351), (89, 47411), (95, 47465), (96, 47474), (98, 47501), (102, 47522), (116, 47657),

Gene: PhluffyCoco_42 Start: 26807, Stop: 27400, Start Num: 50

Candidate Starts for PhluffyCoco_42:

(Start: 50 @26807 has 24 MA's), (75, 26930), (77, 26969), (82, 27002), (88, 27065), (92, 27137), (95, 27152), (98, 27188), (101, 27209), (114, 27320), (118, 27389),

Gene: Phonnegut_85 Start: 47288, Stop: 46740, Start Num: 47

Candidate Starts for Phonnegut_85:

(Start: 47 @47288 has 19 MA's), (74, 47159), (79, 47096), (82, 47087), (85, 47051), (90, 46970), (95, 46937), (106, 46889), (108, 46880),

Gene: Phontbonne_79 Start: 47154, Stop: 46621, Start Num: 41

Candidate Starts for Phontbonne_79:

(Start: 30 @47199 has 3 MA's), (36, 47166), (Start: 41 @47154 has 133 MA's), (76, 47010), (77, 46992), (78, 46983), (85, 46923), (92, 46824), (95, 46809), (106, 46761), (108, 46752),

Gene: Pioneer_85 Start: 47288, Stop: 46740, Start Num: 47

Candidate Starts for Pioneer_85:

(Start: 47 @47288 has 19 MA's), (74, 47159), (79, 47096), (82, 47087), (85, 47051), (90, 46970), (95, 46937), (106, 46889), (108, 46880),

Gene: Pipcraft_75 Start: 47260, Stop: 46727, Start Num: 41

Candidate Starts for Pipcraft_75:

(Start: 30 @47305 has 3 MA's), (36, 47272), (Start: 41 @47260 has 133 MA's), (77, 47098), (78, 47089), (85, 47029), (92, 46930), (95, 46915), (106, 46867), (108, 46858),

Gene: Pmask_88 Start: 48200, Stop: 47670, Start Num: 56

Candidate Starts for Pmask_88:

(19, 48335), (21, 48323), (Start: 40 @48212 has 4 MA's), (Start: 42 @48209 has 20 MA's), (Start: 56 @48200 has 23 MA's), (Start: 58 @48197 has 25 MA's), (Start: 64 @48161 has 1 MA's), (74, 48086), (76, 48065), (83, 48008), (85, 47978), (87, 47963), (92, 47879), (106, 47816), (108, 47807),

Gene: Polymorphads_80 Start: 47280, Stop: 46747, Start Num: 41

Candidate Starts for Polymorphads_80:

(Start: 30 @47325 has 3 MA's), (36, 47292), (Start: 41 @47280 has 133 MA's), (77, 47118), (78, 47109), (85, 47049), (92, 46950), (95, 46935), (106, 46887), (108, 46878),

Gene: Polyphemus_82 Start: 45968, Stop: 45441, Start Num: 58

Candidate Starts for Polyphemus_82:

(19, 46106), (21, 46094), (Start: 40 @45983 has 4 MA's), (Start: 42 @45980 has 20 MA's), (Start: 56 @45971 has 23 MA's), (Start: 58 @45968 has 25 MA's), (Start: 64 @45932 has 1 MA's), (74, 45857), (76, 45836), (83, 45779), (85, 45749), (87, 45734), (92, 45650), (106, 45587), (108, 45578),

Gene: Poompha_76 Start: 46211, Stop: 45672, Start Num: 42

Candidate Starts for Poompha_76:

(Start: 27 @46265 has 1 MA's), (Start: 42 @46211 has 20 MA's), (Start: 64 @46166 has 1 MA's), (74, 46091), (83, 46013), (85, 45983), (95, 45869), (106, 45821), (108, 45812), (112, 45791),

Gene: Priamo_90 Start: 47446, Stop: 46913, Start Num: 42

Candidate Starts for Priamo_90:

(21, 47560), (33, 47479), (Start: 40 @47449 has 4 MA's), (Start: 42 @47446 has 20 MA's), (Start: 56 @47443 has 23 MA's), (Start: 58 @47440 has 25 MA's), (Start: 64 @47404 has 1 MA's), (74, 47329), (76, 47308), (83, 47251), (85, 47221), (87, 47206), (92, 47122), (106, 47059), (108, 47050),

Gene: Priya_83 Start: 47060, Stop: 46512, Start Num: 47

Candidate Starts for Priya_83:

(Start: 38 @47072 has 1 MA's), (Start: 40 @47069 has 4 MA's), (Start: 42 @47066 has 20 MA's), (Start: 47 @47060 has 19 MA's), (74, 46931), (79, 46868), (82, 46859), (85, 46823), (90, 46742), (95, 46709), (106, 46661), (108, 46652),

Gene: Pumbaa_79 Start: 47204, Stop: 46671, Start Num: 41

Candidate Starts for Pumbaa_79:

(Start: 30 @47249 has 3 MA's), (36, 47216), (Start: 41 @47204 has 133 MA's), (77, 47042), (78, 47033), (85, 46973), (92, 46874), (95, 46859), (106, 46811), (108, 46802),

Gene: Qobbit_83 Start: 47022, Stop: 46474, Start Num: 47

Candidate Starts for Qobbit_83:

(Start: 38 @47034 has 1 MA's), (Start: 40 @47031 has 4 MA's), (Start: 42 @47028 has 20 MA's), (Start: 47 @47022 has 19 MA's), (74, 46893), (79, 46830), (82, 46821), (85, 46785), (90, 46704), (95, 46671), (106, 46623), (108, 46614),

Gene: Rahalelujah_84 Start: 46823, Stop: 46275, Start Num: 47

Candidate Starts for Rahalelujah_84:

(1, 47405), (21, 46946), (Start: 38 @46835 has 1 MA's), (Start: 40 @46832 has 4 MA's), (Start: 46 @46826 has 7 MA's), (Start: 47 @46823 has 19 MA's), (76, 46673), (79, 46631), (83, 46616), (85, 46586), (90, 46505), (95, 46472), (106, 46424), (108, 46415),

Gene: Rattail_42 Start: 26893, Stop: 27486, Start Num: 50

Candidate Starts for Rattail_42:

(Start: 50 @26893 has 24 MA's), (75, 27016), (77, 27055), (82, 27088), (88, 27151), (92, 27223), (95, 27238), (98, 27274), (101, 27295), (114, 27406), (118, 27475),

Gene: Rebeuca_80 Start: 47481, Stop: 46942, Start Num: 42

Candidate Starts for Rebeuca_80:

(Start: 27 @47535 has 1 MA's), (Start: 42 @47481 has 20 MA's), (Start: 64 @47436 has 1 MA's), (74, 47361), (83, 47283), (85, 47253), (90, 47172), (95, 47139), (96, 47130), (106, 47091), (108, 47082), (112, 47061),

Gene: RedBird_71 Start: 44150, Stop: 44698, Start Num: 60

Candidate Starts for RedBird_71:

(29, 44069), (Start: 60 @44150 has 15 MA's), (69, 44225), (74, 44261), (76, 44285), (85, 44372), (92, 44471), (93, 44474), (96, 44495), (98, 44522), (102, 44543),

Gene: RedFox_42 Start: 26806, Stop: 27399, Start Num: 50

Candidate Starts for RedFox_42:

(Start: 50 @26806 has 24 MA's), (75, 26929), (77, 26968), (82, 27001), (88, 27064), (92, 27136), (95, 27151), (98, 27187), (101, 27208), (114, 27319), (118, 27388),

Gene: Refuge_82 Start: 48905, Stop: 48375, Start Num: 58

Candidate Starts for Refuge_82:

(34, 48929), (Start: 58 @48905 has 25 MA's), (74, 48794), (82, 48722), (83, 48716), (85, 48686), (92, 48587), (95, 48572), (106, 48524), (108, 48515),

Gene: Relief_78 Start: 47256, Stop: 46723, Start Num: 41

Candidate Starts for Relief_78:

(Start: 30 @47301 has 3 MA's), (36, 47268), (Start: 41 @47256 has 133 MA's), (76, 47112), (77, 47094), (78, 47085), (85, 47025), (92, 46926), (95, 46911), (106, 46863), (108, 46854),

Gene: RemusLoopin_34 Start: 26998, Stop: 27498, Start Num: 60

Candidate Starts for RemusLoopin_34:

(48, 26977), (Start: 60 @26998 has 15 MA's), (75, 27112), (77, 27151), (92, 27319), (94, 27325), (115, 27445),

Gene: Renna12_41 Start: 26867, Stop: 27475, Start Num: 50

Candidate Starts for Renna12_41:

(Start: 50 @26867 has 24 MA's), (75, 26990), (77, 27029), (79, 27053), (82, 27062), (85, 27098), (88, 27125), (92, 27197), (93, 27200), (95, 27212), (98, 27248), (101, 27269), (112, 27329), (120, 27470),

Gene: Rifter_91 Start: 47196, Stop: 46669, Start Num: 56

Candidate Starts for Rifter_91:

(21, 47313), (Start: 40 @47202 has 4 MA's), (Start: 42 @47199 has 20 MA's), (Start: 56 @47196 has 23 MA's), (Start: 64 @47160 has 1 MA's), (68, 47127), (74, 47085), (83, 47007), (85, 46977), (92, 46878), (93, 46875), (95, 46863), (96, 46854), (106, 46815), (108, 46806),

Gene: RockieBear_76 Start: 47258, Stop: 46725, Start Num: 41

Candidate Starts for RockieBear_76:

(Start: 30 @47303 has 3 MA's), (36, 47270), (Start: 41 @47258 has 133 MA's), (76, 47114), (77, 47096), (78, 47087), (85, 47027), (92, 46928), (95, 46913), (106, 46865), (108, 46856),

Gene: Roksolana_91 Start: 47912, Stop: 47385, Start Num: 56

Candidate Starts for Roksolana_91:

(21, 48029), (Start: 40 @47918 has 4 MA's), (Start: 42 @47915 has 20 MA's), (Start: 56 @47912 has 23 MA's), (Start: 64 @47876 has 1 MA's), (68, 47843), (74, 47801), (83, 47723), (85, 47693), (92, 47594), (93, 47591), (95, 47579), (96, 47570), (106, 47531), (108, 47522),

Gene: Romney_78 Start: 47256, Stop: 46723, Start Num: 41

Candidate Starts for Romney_78:

(Start: 30 @47301 has 3 MA's), (36, 47268), (Start: 41 @47256 has 133 MA's), (76, 47112), (77, 47094), (78, 47085), (85, 47025), (92, 46926), (95, 46911), (106, 46863), (108, 46854),

Gene: Roosevelt_77 Start: 47261, Stop: 46728, Start Num: 41

Candidate Starts for Roosevelt_77:

(Start: 30 @47306 has 3 MA's), (36, 47273), (Start: 41 @47261 has 133 MA's), (77, 47099), (78, 47090), (85, 47030), (92, 46931), (95, 46916), (106, 46868), (108, 46859),

Gene: Rosa24_75 Start: 47287, Stop: 46754, Start Num: 41

Candidate Starts for Rosa24_75:

(Start: 30 @47332 has 3 MA's), (36, 47299), (Start: 41 @47287 has 133 MA's), (76, 47143), (77, 47125), (78, 47116), (85, 47056), (92, 46957), (95, 46942), (106, 46894), (108, 46885),

Gene: Rowdy_81 Start: 47188, Stop: 46649, Start Num: 51

Candidate Starts for Rowdy_81:

(Start: 27 @47248 has 1 MA's), (Start: 51 @47188 has 2 MA's), (Start: 64 @47143 has 1 MA's), (74, 47068), (76, 47047), (83, 46990), (85, 46960), (90, 46879), (95, 46846), (96, 46837), (106, 46798), (108, 46789), (112, 46768),

Gene: Ruin_79 Start: 47252, Stop: 46719, Start Num: 41

Candidate Starts for Ruin_79:

(Start: 30 @47297 has 3 MA's), (36, 47264), (Start: 41 @47252 has 133 MA's), (76, 47108), (77, 47090), (78, 47081), (85, 47021), (92, 46922), (95, 46907), (106, 46859), (108, 46850),

Gene: Ryadel_8 Start: 2666, Stop: 2088, Start Num: 56

Candidate Starts for Ryadel_8:

(28, 2744), (Start: 56 @2666 has 23 MA's), (63, 2627), (Start: 64 @2624 has 1 MA's), (74, 2549), (76, 2525), (79, 2483), (84, 2453), (95, 2312), (100, 2261), (105, 2240),

Gene: RyeScarlet_86 Start: 47263, Stop: 46715, Start Num: 47

Candidate Starts for RyeScarlet_86:

(Start: 38 @47275 has 1 MA's), (Start: 40 @47272 has 4 MA's), (Start: 42 @47269 has 20 MA's), (Start: 47 @47263 has 19 MA's), (74, 47134), (79, 47071), (82, 47062), (85, 47026), (90, 46945), (95, 46912), (106, 46864), (108, 46855),

Gene: Sabertooth_79 Start: 47264, Stop: 46731, Start Num: 41

Candidate Starts for Sabertooth_79:

(Start: 30 @47309 has 3 MA's), (36, 47276), (Start: 41 @47264 has 133 MA's), (77, 47102), (78, 47093), (85, 47033), (92, 46934), (95, 46919), (106, 46871), (108, 46862),

Gene: Sachima_81 Start: 47300, Stop: 46752, Start Num: 47

Candidate Starts for Sachima_81:

(Start: 47 @47300 has 19 MA's), (74, 47171), (79, 47108), (82, 47099), (85, 47063), (90, 46982), (95, 46949), (106, 46901), (108, 46892),

Gene: Samora_34 Start: 26403, Stop: 26903, Start Num: 60

Candidate Starts for Samora_34:

(Start: 30 @26328 has 3 MA's), (33, 26337), (Start: 60 @26403 has 15 MA's), (Start: 64 @26439 has 1 MA's), (74, 26514), (75, 26517), (94, 26730), (95, 26739), (111, 26772),

Gene: Samy_49 Start: 33023, Stop: 33553, Start Num: 46

Candidate Starts for Samy_49:

(Start: 46 @33023 has 7 MA's), (Start: 65 @33089 has 1 MA's), (83, 33242),

Gene: Sassafras_71 Start: 44468, Stop: 45091, Start Num: 60

Candidate Starts for Sassafras_71:

(29, 44387), (Start: 60 @44468 has 15 MA's), (69, 44543), (74, 44579), (76, 44603), (85, 44690), (92, 44789), (93, 44792), (96, 44813), (98, 44840), (102, 44861),

Gene: Scamp_79 Start: 47261, Stop: 46728, Start Num: 41

Candidate Starts for Scamp_79:

(Start: 30 @47306 has 3 MA's), (36, 47273), (Start: 41 @47261 has 133 MA's), (76, 47117), (77, 47099), (78, 47090), (85, 47030), (92, 46931), (95, 46916), (106, 46868), (108, 46859),

Gene: Scherzo_83 Start: 47320, Stop: 46772, Start Num: 47

Candidate Starts for Scherzo_83:

(Start: 47 @47320 has 19 MA's), (74, 47191), (79, 47128), (82, 47119), (85, 47083), (90, 47002), (95, 46969), (106, 46921), (108, 46912),

Gene: SchoolBus_6 Start: 2147, Stop: 1557, Start Num: 44

Candidate Starts for SchoolBus_6:

(Start: 44 @2147 has 29 MA's), (63, 2096), (Start: 64 @2093 has 1 MA's), (74, 2018), (76, 1994), (79, 1952), (84, 1922), (95, 1781), (100, 1730), (105, 1709),

Gene: Schuy_6 Start: 2098, Stop: 1508, Start Num: 44

Candidate Starts for Schuy_6:

(17, 2251), (26, 2176), (35, 2119), (Start: 38 @2107 has 1 MA's), (Start: 44 @2098 has 29 MA's), (63, 2047), (Start: 64 @2044 has 1 MA's), (74, 1969), (76, 1945), (79, 1903), (84, 1873), (95, 1732), (100, 1681), (105, 1660),

Gene: Sebastisaurus_34 Start: 26720, Stop: 27220, Start Num: 60

Candidate Starts for Sebastisaurus_34:

(48, 26699), (Start: 60 @26720 has 15 MA's), (75, 26834), (77, 26873), (82, 26909), (94, 27047), (111, 27089), (115, 27167),

Gene: SenorClean_80 Start: 47259, Stop: 46726, Start Num: 41

Candidate Starts for SenorClean_80:

(Start: 30 @47304 has 3 MA's), (36, 47271), (Start: 41 @47259 has 133 MA's), (76, 47115), (77, 47097), (78, 47088), (85, 47028), (92, 46929), (95, 46914), (106, 46866), (108, 46857),

Gene: Severus_77 Start: 46211, Stop: 45672, Start Num: 42

Candidate Starts for Severus_77:

(Start: 27 @46265 has 1 MA's), (Start: 42 @46211 has 20 MA's), (Start: 64 @46166 has 1 MA's), (74, 46091), (83, 46013), (85, 45983), (95, 45869), (106, 45821), (108, 45812), (112, 45791),

Gene: Shaka_77 Start: 47257, Stop: 46724, Start Num: 41

Candidate Starts for Shaka_77:

(Start: 30 @47302 has 3 MA's), (36, 47269), (Start: 41 @47257 has 133 MA's), (76, 47113), (77, 47095), (78, 47086), (85, 47026), (92, 46927), (95, 46912), (106, 46864), (108, 46855),

Gene: Shapes_81 Start: 47188, Stop: 46649, Start Num: 51

Candidate Starts for Shapes_81:

(Start: 27 @47248 has 1 MA's), (Start: 51 @47188 has 2 MA's), (Start: 64 @47143 has 1 MA's), (74, 47068), (76, 47047), (83, 46990), (85, 46960), (90, 46879), (95, 46846), (96, 46837), (106, 46798), (108, 46789), (112, 46768),

Gene: SheaKeira_80 Start: 46608, Stop: 46063, Start Num: 42

Candidate Starts for SheaKeira_80:

(12, 46806), (Start: 38 @46614 has 1 MA's), (Start: 42 @46608 has 20 MA's), (66, 46545), (74, 46482), (79, 46419), (81, 46413), (83, 46404), (85, 46374), (90, 46293), (95, 46260), (106, 46212), (108, 46203),

Gene: SheldonCooper_79 Start: 47697, Stop: 47164, Start Num: 41

Candidate Starts for SheldonCooper_79:

(Start: 30 @47742 has 3 MA's), (36, 47709), (Start: 41 @47697 has 133 MA's), (76, 47553), (77, 47535), (78, 47526), (85, 47466), (92, 47367), (95, 47352), (106, 47304), (108, 47295),

Gene: Shen_39 Start: 26102, Stop: 26695, Start Num: 50

Candidate Starts for Shen_39:

(Start: 50 @26102 has 24 MA's), (67, 26168), (75, 26225), (77, 26264), (79, 26288), (88, 26360), (92, 26432), (95, 26447), (98, 26483), (101, 26504), (107, 26534), (114, 26615), (118, 26684),

Gene: Shida_6 Start: 2147, Stop: 1557, Start Num: 44

Candidate Starts for Shida_6:

(17, 2300), (26, 2225), (35, 2168), (Start: 38 @2156 has 1 MA's), (Start: 44 @2147 has 29 MA's), (63, 2096), (Start: 64 @2093 has 1 MA's), (74, 2018), (76, 1994), (79, 1952), (84, 1922), (95, 1781), (100, 1730), (105, 1709),

Gene: ShowerHandel_73 Start: 45372, Stop: 45995, Start Num: 60

Candidate Starts for ShowerHandel_73:

(24, 45249), (29, 45291), (Start: 60 @45372 has 15 MA's), (62, 45387), (Start: 65 @45414 has 1 MA's), (66, 45420), (69, 45447), (74, 45483), (85, 45594), (89, 45654), (96, 45717), (98, 45744), (102, 45765),

Gene: Shygu2_77 Start: 47203, Stop: 46670, Start Num: 41

Candidate Starts for Shygu2_77:

(Start: 30 @47248 has 3 MA's), (36, 47215), (Start: 41 @47203 has 133 MA's), (76, 47059), (77, 47041), (82, 47008), (85, 46972), (92, 46873), (95, 46858), (106, 46810), (108, 46801),

Gene: Skipitt_78 Start: 47253, Stop: 46720, Start Num: 41

Candidate Starts for Skipitt_78:

(Start: 30 @47298 has 3 MA's), (36, 47265), (Start: 41 @47253 has 133 MA's), (76, 47109), (77, 47091), (78, 47082), (85, 47022), (92, 46923), (95, 46908), (106, 46860), (108, 46851),

Gene: SmellyB_89 Start: 47554, Stop: 47027, Start Num: 58

Candidate Starts for SmellyB_89:

(21, 47674), (33, 47593), (Start: 40 @47563 has 4 MA's), (Start: 42 @47560 has 20 MA's), (Start: 56 @47557 has 23 MA's), (Start: 58 @47554 has 25 MA's), (Start: 64 @47518 has 1 MA's), (74, 47443), (76, 47422), (83, 47365), (85, 47335), (87, 47320), (92, 47236), (106, 47173), (108, 47164),

Gene: Smooch_7 Start: 2521, Stop: 1931, Start Num: 44

Candidate Starts for Smooch_7:

(Start: 44 @2521 has 29 MA's), (63, 2470), (Start: 64 @2467 has 1 MA's), (74, 2392), (76, 2368), (77, 2350), (84, 2296), (95, 2155), (100, 2104), (105, 2083),

Gene: Sparxx_80 Start: 47255, Stop: 46722, Start Num: 41

Candidate Starts for Sparxx_80:

(Start: 30 @47300 has 3 MA's), (36, 47267), (Start: 41 @47255 has 133 MA's), (77, 47093), (78, 47084), (85, 47024), (92, 46925), (95, 46910), (106, 46862), (108, 46853),

Gene: Spino_78 Start: 47259, Stop: 46726, Start Num: 41

Candidate Starts for Spino_78:

(Start: 30 @47304 has 3 MA's), (36, 47271), (Start: 41 @47259 has 133 MA's), (76, 47115), (77, 47097), (78, 47088), (85, 47028), (92, 46929), (95, 46914), (106, 46866), (108, 46857),

Gene: Spouty_83 Start: 47059, Stop: 46511, Start Num: 47

Candidate Starts for Spouty_83:

(Start: 38 @47071 has 1 MA's), (Start: 40 @47068 has 4 MA's), (Start: 42 @47065 has 20 MA's), (Start: 47 @47059 has 19 MA's), (74, 46930), (79, 46867), (82, 46858), (85, 46822), (90, 46741), (95, 46708), (106, 46660), (108, 46651),

Gene: Stasia_76 Start: 47261, Stop: 46683, Start Num: 30

Candidate Starts for Stasia_76:

(Start: 30 @47261 has 3 MA's), (36, 47228), (Start: 41 @47216 has 133 MA's), (74, 47093), (76, 47072), (77, 47054), (85, 46985), (92, 46886), (95, 46871), (106, 46823), (108, 46814),

Gene: SteMason_75 Start: 47256, Stop: 46723, Start Num: 41

Candidate Starts for SteMason_75:

(Start: 30 @47301 has 3 MA's), (36, 47268), (Start: 41 @47256 has 133 MA's), (76, 47112), (77, 47094), (78, 47085), (85, 47025), (92, 46926), (95, 46911), (106, 46863), (108, 46854),

Gene: Steamy_77 Start: 47389, Stop: 46856, Start Num: 55

Candidate Starts for Steamy_77:

(33, 47431), (Start: 55 @47389 has 2 MA's), (57, 47386), (74, 47275), (79, 47212), (83, 47197), (85, 47167), (90, 47086), (95, 47053), (106, 47005), (108, 46996),

Gene: Stink_79 Start: 47391, Stop: 46849, Start Num: 41

Candidate Starts for Stink_79:

(Start: 41 @47391 has 133 MA's), (Start: 64 @47343 has 1 MA's), (Start: 65 @47337 has 1 MA's), (67, 47322), (76, 47247), (77, 47229), (78, 47220), (85, 47160), (92, 47061), (95, 47046), (106, 46998), (108, 46989),

Gene: StuartMinion_34 Start: 23874, Stop: 24473, Start Num: 50

Candidate Starts for StuartMinion_34:

(Start: 50 @23874 has 24 MA's), (66, 23931), (75, 23997), (77, 24036), (82, 24069), (85, 24105), (92, 24204), (95, 24219), (98, 24255), (101, 24276),

Gene: Sultana_79 Start: 47256, Stop: 46723, Start Num: 41

Candidate Starts for Sultana_79:

(Start: 30 @47301 has 3 MA's), (36, 47268), (Start: 41 @47256 has 133 MA's), (76, 47112), (77, 47094), (78, 47085), (85, 47025), (92, 46926), (95, 46911), (106, 46863), (108, 46854),

Gene: SuperAwesome_89 Start: 48236, Stop: 47709, Start Num: 58

Candidate Starts for SuperAwesome_89:

(19, 48374), (21, 48362), (Start: 40 @48251 has 4 MA's), (Start: 42 @48248 has 20 MA's), (Start: 56 @48239 has 23 MA's), (Start: 58 @48236 has 25 MA's), (Start: 64 @48200 has 1 MA's), (74, 48125), (76, 48104), (83, 48047), (85, 48017), (87, 48002), (92, 47918), (106, 47855), (108, 47846),

Gene: SuperCallie99_85 Start: 47620, Stop: 47090, Start Num: 56

Candidate Starts for SuperCallie99_85:

(21, 47737), (33, 47656), (Start: 40 @47626 has 4 MA's), (Start: 42 @47623 has 20 MA's), (Start: 56 @47620 has 23 MA's), (Start: 58 @47617 has 25 MA's), (Start: 64 @47581 has 1 MA's), (74, 47506), (76, 47485), (83, 47428), (85, 47398), (87, 47383), (92, 47299), (106, 47236), (108, 47227),

Gene: Taquarus_78 Start: 47262, Stop: 46729, Start Num: 41

Candidate Starts for Taquarus_78:

(Start: 30 @47307 has 3 MA's), (36, 47274), (Start: 41 @47262 has 133 MA's), (76, 47118), (77, 47100), (78, 47091), (85, 47031), (92, 46932), (95, 46917), (106, 46869), (108, 46860),

Gene: TaylorSipht_40 Start: 26950, Stop: 27543, Start Num: 50

Candidate Starts for TaylorSipht_40:

(18, 26785), (Start: 50 @26950 has 24 MA's), (67, 27016), (75, 27073), (76, 27094), (77, 27112), (79, 27136), (85, 27181), (88, 27208), (92, 27280), (95, 27295), (98, 27331), (101, 27352), (114, 27463),

Gene: TelAviv_6 Start: 2144, Stop: 1554, Start Num: 44

Candidate Starts for TelAviv_6:

(Start: 44 @2144 has 29 MA's), (63, 2093), (Start: 64 @2090 has 1 MA's), (74, 2015), (76, 1991), (77, 1973), (84, 1919), (95, 1778), (100, 1727), (105, 1706),

Gene: Temprado_92 Start: 48028, Stop: 47501, Start Num: 56

Candidate Starts for Temprado_92:

(21, 48145), (Start: 40 @48034 has 4 MA's), (Start: 42 @48031 has 20 MA's), (Start: 56 @48028 has 23 MA's), (Start: 64 @47992 has 1 MA's), (68, 47959), (74, 47917), (83, 47839), (85, 47809), (92, 47710), (93, 47707), (95, 47695), (96, 47686), (106, 47647), (108, 47638),

Gene: Thanksgivukkah_78 Start: 47257, Stop: 46724, Start Num: 41

Candidate Starts for Thanksgivukkah_78:

(Start: 30 @47302 has 3 MA's), (36, 47269), (Start: 41 @47257 has 133 MA's), (77, 47095), (78, 47086), (85, 47026), (92, 46927), (95, 46912), (106, 46864), (108, 46855),

Gene: TinaFeyge_77 Start: 47254, Stop: 46721, Start Num: 41

Candidate Starts for TinaFeyge_77:

(Start: 30 @47299 has 3 MA's), (36, 47266), (Start: 41 @47254 has 133 MA's), (77, 47092), (78, 47083), (85, 47023), (92, 46924), (95, 46909), (106, 46861), (108, 46852),

Gene: Tinybot_78 Start: 47286, Stop: 46753, Start Num: 41

Candidate Starts for Tinybot_78:

(Start: 30 @47331 has 3 MA's), (36, 47298), (Start: 41 @47286 has 133 MA's), (76, 47142), (77, 47124), (78, 47115), (85, 47055), (92, 46956), (95, 46941), (106, 46893), (108, 46884),

Gene: TiroTheta9_78 Start: 47253, Stop: 46720, Start Num: 41

Candidate Starts for TiroTheta9_78:

(Start: 30 @47298 has 3 MA's), (36, 47265), (Start: 41 @47253 has 133 MA's), (77, 47091), (78, 47082), (85, 47022), (92, 46923), (95, 46908), (106, 46860), (108, 46851),

Gene: Toad24_42 Start: 28241, Stop: 28834, Start Num: 50

Candidate Starts for Toad24_42:

(Start: 50 @28241 has 24 MA's), (67, 28307), (75, 28364), (77, 28403), (79, 28427), (88, 28499), (92, 28571), (95, 28586), (98, 28622), (101, 28643), (107, 28673), (114, 28754), (118, 28823),

Gene: Toaka_83 Start: 47180, Stop: 46632, Start Num: 47

Candidate Starts for Toaka_83:

(23, 47282), (Start: 47 @47180 has 19 MA's), (79, 46988), (82, 46979), (85, 46943), (90, 46862), (95, 46829), (96, 46820), (106, 46781), (108, 46772),

Gene: ToneTone_88 Start: 47576, Stop: 47049, Start Num: 58

Candidate Starts for ToneTone_88:

(21, 47696), (Start: 40 @47585 has 4 MA's), (Start: 42 @47582 has 20 MA's), (Start: 58 @47576 has 25 MA's), (Start: 64 @47540 has 1 MA's), (68, 47507), (74, 47465), (83, 47387), (85, 47357), (92, 47258), (93, 47255), (95, 47243), (96, 47234), (106, 47195), (108, 47186),

Gene: TroyPia_80 Start: 47294, Stop: 46761, Start Num: 41

Candidate Starts for TroyPia_80:

(Start: 30 @47339 has 3 MA's), (36, 47306), (Start: 41 @47294 has 133 MA's), (76, 47150), (77, 47132), (78, 47123), (85, 47063), (92, 46964), (95, 46949), (106, 46901), (108, 46892),

Gene: Tubs_85 Start: 47272, Stop: 46724, Start Num: 47

Candidate Starts for Tubs_85:

(Start: 47 @47272 has 19 MA's), (74, 47143), (79, 47080), (82, 47071), (85, 47035), (90, 46954), (95, 46921), (106, 46873), (108, 46864),

Gene: Tucker_91 Start: 47779, Stop: 47252, Start Num: 58

Candidate Starts for Tucker_91:

(21, 47899), (Start: 40 @47788 has 4 MA's), (Start: 42 @47785 has 20 MA's), (Start: 58 @47779 has 25 MA's), (Start: 64 @47743 has 1 MA's), (68, 47710), (74, 47668), (83, 47590), (85, 47560), (92, 47461), (93, 47458), (95, 47446), (96, 47437), (106, 47398), (108, 47389),

Gene: Twister_79 Start: 47039, Stop: 46500, Start Num: 42

Candidate Starts for Twister_79:

(Start: 27 @47093 has 1 MA's), (Start: 42 @47039 has 20 MA's), (Start: 64 @46994 has 1 MA's), (74, 46919), (85, 46811), (90, 46730), (95, 46697), (96, 46688), (106, 46649), (108, 46640), (112, 46619),

Gene: TygerBlood_79 Start: 47259, Stop: 46726, Start Num: 41

Candidate Starts for TygerBlood_79:

(Start: 30 @47304 has 3 MA's), (36, 47271), (Start: 41 @47259 has 133 MA's), (76, 47115), (77, 47097), (78, 47088), (85, 47028), (92, 46929), (95, 46914), (106, 46866), (108, 46857),

Gene: Ulysses_78 Start: 46942, Stop: 46409, Start Num: 41

Candidate Starts for Ulysses_78:

(Start: 30 @46987 has 3 MA's), (36, 46954), (Start: 41 @46942 has 133 MA's), (76, 46798), (77, 46780), (78, 46771), (85, 46711), (92, 46612), (95, 46597), (106, 46549), (108, 46540),

Gene: Upyo_54 Start: 39880, Stop: 39335, Start Num: 59

Candidate Starts for Upyo_54:

(Start: 38 @39916 has 1 MA's), (Start: 59 @39880 has 1 MA's), (74, 39754), (95, 39538), (109, 39508),

Gene: Vagabond_6 Start: 2233, Stop: 1643, Start Num: 44

Candidate Starts for Vagabond_6:

(Start: 44 @2233 has 29 MA's), (63, 2182), (74, 2104), (76, 2080), (77, 2062), (84, 2008), (95, 1867), (100, 1816), (105, 1795),

Gene: Vanisoa_80 Start: 47513, Stop: 46962, Start Num: 46

Candidate Starts for Vanisoa_80:

(2, 47984), (21, 47636), (37, 47525), (Start: 46 @47513 has 7 MA's), (79, 47318), (83, 47303), (85, 47273), (90, 47192), (95, 47159), (96, 47150), (106, 47111), (108, 47102),

Gene: Vash_32 Start: 25646, Stop: 26146, Start Num: 60

Candidate Starts for Vash_32:

(Start: 60 @25646 has 15 MA's), (Start: 64 @25682 has 1 MA's), (75, 25760), (77, 25799), (94, 25973), (111, 26015), (115, 26093),

Gene: VohminGhazi_89 Start: 47555, Stop: 47028, Start Num: 58

Candidate Starts for VohminGhazi_89:

(21, 47675), (33, 47594), (Start: 40 @47564 has 4 MA's), (Start: 42 @47561 has 20 MA's), (Start: 56 @47558 has 23 MA's), (Start: 58 @47555 has 25 MA's), (Start: 64 @47519 has 1 MA's), (74, 47444), (76, 47423), (83, 47366), (85, 47336), (87, 47321), (92, 47237), (106, 47174), (108, 47165),

Gene: Vorrps_6 Start: 2098, Stop: 1508, Start Num: 44

Candidate Starts for Vorrps_6:

(17, 2251), (26, 2176), (35, 2119), (Start: 38 @2107 has 1 MA's), (Start: 44 @2098 has 29 MA's), (63, 2047), (Start: 64 @2044 has 1 MA's), (74, 1969), (76, 1945), (79, 1903), (84, 1873), (95, 1732), (100, 1681), (105, 1660),

Gene: WalterMcMickey_78 Start: 47039, Stop: 46500, Start Num: 42

Candidate Starts for WalterMcMickey_78:

(Start: 27 @47093 has 1 MA's), (Start: 42 @47039 has 20 MA's), (Start: 64 @46994 has 1 MA's), (74, 46919), (85, 46811), (90, 46730), (95, 46697), (96, 46688), (106, 46649), (108, 46640), (112, 46619),

Gene: Wander_79 Start: 47253, Stop: 46720, Start Num: 41

Candidate Starts for Wander_79:

(Start: 30 @47298 has 3 MA's), (36, 47265), (Start: 41 @47253 has 133 MA's), (76, 47109), (77, 47091), (78, 47082), (85, 47022), (92, 46923), (95, 46908), (106, 46860), (108, 46851),

Gene: Westrich_48 Start: 27919, Stop: 28518, Start Num: 50

Candidate Starts for Westrich_48:

(Start: 50 @27919 has 24 MA's), (67, 27991), (75, 28048), (77, 28087), (79, 28111), (88, 28183), (92, 28255), (95, 28270), (98, 28306), (101, 28327), (107, 28357), (114, 28438), (118, 28507),

Gene: Wiks_90 Start: 47659, Stop: 47132, Start Num: 56

Candidate Starts for Wiks_90:

(21, 47776), (Start: 40 @47665 has 4 MA's), (Start: 42 @47662 has 20 MA's), (Start: 56 @47659 has 23 MA's), (Start: 64 @47623 has 1 MA's), (68, 47590), (74, 47548), (83, 47470), (85, 47440), (92, 47341), (93, 47338), (95, 47326), (96, 47317), (106, 47278), (108, 47269),

Gene: Wilbur_79 Start: 47256, Stop: 46723, Start Num: 41

Candidate Starts for Wilbur_79:

(Start: 30 @47301 has 3 MA's), (36, 47268), (Start: 41 @47256 has 133 MA's), (76, 47112), (77, 47094), (78, 47085), (85, 47025), (92, 46926), (95, 46911), (106, 46863), (108, 46854),

Gene: Wildflower_6 Start: 2193, Stop: 1603, Start Num: 44

Candidate Starts for Wildflower_6:

(Start: 44 @2193 has 29 MA's), (63, 2142), (Start: 64 @2139 has 1 MA's), (74, 2064), (76, 2040), (77, 2022), (84, 1968), (95, 1827), (100, 1776), (105, 1755),

Gene: Wile_75 Start: 47083, Stop: 46550, Start Num: 41

Candidate Starts for Wile_75:

(13, 47278), (16, 47236), (21, 47200), (22, 47188), (Start: 27 @47134 has 1 MA's), (Start: 41 @47083 has 133 MA's), (77, 46921), (85, 46852), (92, 46753), (95, 46738), (106, 46690), (108, 46681),

Gene: WileyE_41 Start: 27140, Stop: 27736, Start Num: 50

Candidate Starts for WileyE_41:

(Start: 50 @27140 has 24 MA's), (75, 27266), (77, 27305), (79, 27329), (88, 27401), (92, 27473), (93, 27476), (95, 27488), (98, 27524), (101, 27545), (107, 27575), (112, 27605), (114, 27656), (118, 27725),

Gene: Winget_6 Start: 2232, Stop: 1642, Start Num: 44

Candidate Starts for Winget_6:

(Start: 44 @2232 has 29 MA's), (63, 2181), (74, 2103), (76, 2079), (77, 2061), (84, 2007), (95, 1866), (100, 1815), (105, 1794),

Gene: Wizard007_76 Start: 46809, Stop: 46276, Start Num: 41

Candidate Starts for Wizard007_76:

(13, 47004), (16, 46962), (21, 46926), (22, 46914), (Start: 27 @46860 has 1 MA's), (Start: 41 @46809 has 133 MA's), (77, 46647), (85, 46578), (92, 46479), (95, 46464), (106, 46416), (108, 46407),

Gene: Wogge42_6 Start: 2236, Stop: 1646, Start Num: 44

Candidate Starts for Wogge42_6:

(15, 2413), (17, 2389), (26, 2314), (35, 2257), (Start: 38 @2245 has 1 MA's), (Start: 44 @2236 has 29 MA's), (63, 2185), (Start: 64 @2182 has 1 MA's), (74, 2107), (76, 2083), (79, 2041), (84, 2011), (95, 1870), (100, 1819), (105, 1798),

Gene: WorldCup_83 Start: 46962, Stop: 46414, Start Num: 47

Candidate Starts for WorldCup_83:

(1, 47544), (21, 47085), (33, 47004), (Start: 40 @46971 has 4 MA's), (Start: 42 @46968 has 20 MA's), (Start: 47 @46962 has 19 MA's), (76, 46812), (79, 46770), (83, 46755), (85, 46725), (90, 46644), (95, 46611), (106, 46563), (108, 46554),

Gene: Xena_75 Start: 47078, Stop: 46545, Start Num: 41

Candidate Starts for Xena_75:

(Start: 30 @47123 has 3 MA's), (36, 47090), (Start: 41 @47078 has 133 MA's), (77, 46916), (78, 46907), (85, 46847), (92, 46748), (95, 46733), (106, 46685), (108, 46676),

Gene: Yecey3_86 Start: 47082, Stop: 46528, Start Num: 38

Candidate Starts for Yecey3_86:

(8, 47352), (10, 47337), (20, 47196), (25, 47157), (Start: 38 @47082 has 1 MA's), (Start: 40 @47079 has 4 MA's), (Start: 42 @47076 has 20 MA's), (66, 47010), (76, 46926), (79, 46884), (83, 46869), (85, 46839), (90, 46758), (95, 46725), (96, 46716), (106, 46677), (108, 46668),

Gene: YoSam321_79 Start: 47254, Stop: 46721, Start Num: 41

Candidate Starts for YoSam321_79:

(Start: 30 @47299 has 3 MA's), (36, 47266), (Start: 41 @47254 has 133 MA's), (77, 47092), (78, 47083), (85, 47023), (92, 46924), (95, 46909), (106, 46861), (108, 46852),

Gene: Yokurt_90 Start: 47659, Stop: 47132, Start Num: 56

Candidate Starts for Yokurt_90:

(21, 47776), (Start: 40 @47665 has 4 MA's), (Start: 42 @47662 has 20 MA's), (Start: 56 @47659 has 23 MA's), (Start: 64 @47623 has 1 MA's), (68, 47590), (74, 47548), (83, 47470), (85, 47440), (92, 47341), (93, 47338), (95, 47326), (96, 47317), (106, 47278), (108, 47269),

Gene: YoyoKar_6 Start: 2154, Stop: 1564, Start Num: 44

Candidate Starts for YoyoKar_6:

(Start: 44 @2154 has 29 MA's), (63, 2103), (Start: 64 @2100 has 1 MA's), (74, 2025), (76, 2001), (79, 1959), (84, 1929), (95, 1788), (100, 1737), (105, 1716),

Gene: YungJamal_7 Start: 2521, Stop: 1931, Start Num: 44

Candidate Starts for YungJamal_7:

(Start: 44 @2521 has 29 MA's), (63, 2470), (Start: 64 @2467 has 1 MA's), (74, 2392), (76, 2368), (77, 2350), (84, 2296), (95, 2155), (100, 2104), (105, 2083),

Gene: Zaka_91 Start: 47659, Stop: 47132, Start Num: 56

Candidate Starts for Zaka_91:

(21, 47776), (Start: 40 @47665 has 4 MA's), (Start: 42 @47662 has 20 MA's), (Start: 56 @47659 has 23 MA's), (Start: 64 @47623 has 1 MA's), (68, 47590), (74, 47548), (83, 47470), (85, 47440), (92, 47341), (93, 47338), (95, 47326), (96, 47317), (106, 47278), (108, 47269),

Gene: Zakhe101_7 Start: 2545, Stop: 1955, Start Num: 44

Candidate Starts for Zakhe101_7:

(Start: 44 @2545 has 29 MA's), (63, 2494), (Start: 64 @2491 has 1 MA's), (74, 2416), (76, 2392), (77, 2374), (84, 2320), (95, 2179), (100, 2128), (105, 2107),

Gene: Zebo_6 Start: 2147, Stop: 1557, Start Num: 44

Candidate Starts for Zebo_6:

(Start: 44 @2147 has 29 MA's), (63, 2096), (Start: 64 @2093 has 1 MA's), (74, 2018), (76, 1994), (79, 1952), (84, 1922), (95, 1781), (100, 1730), (105, 1709),

Gene: Zhuangyuan_44 Start: 27617, Stop: 28213, Start Num: 50

Candidate Starts for Zhuangyuan_44:

(Start: 50 @27617 has 24 MA's), (75, 27740), (77, 27779), (82, 27812), (85, 27848), (88, 27875), (92, 27947), (95, 27962), (98, 27998), (101, 28019), (112, 28079),

Gene: Zimmer_81 Start: 48142, Stop: 47615, Start Num: 58

Candidate Starts for Zimmer_81:

(31, 48190), (Start: 58 @48142 has 25 MA's), (74, 48031), (79, 47968), (83, 47953), (85, 47923), (91, 47839), (92, 47824), (95, 47809), (106, 47761), (108, 47752),

Gene: Zixiang_43 Start: 27606, Stop: 28199, Start Num: 50

Candidate Starts for Zixiang_43:

(Start: 50 @27606 has 24 MA's), (67, 27672), (75, 27729), (77, 27768), (79, 27792), (88, 27864), (92, 27936), (95, 27951), (98, 27987), (101, 28008), (107, 28038), (114, 28119), (118, 28188),

Gene: Zulu_92 Start: 48036, Stop: 47509, Start Num: 58

Candidate Starts for Zulu_92:

(21, 48153), (Start: 54 @48042 has 1 MA's), (Start: 56 @48039 has 23 MA's), (Start: 58 @48036 has 25 MA's), (Start: 64 @48000 has 1 MA's), (68, 47967), (74, 47925), (83, 47847), (85, 47817), (87, 47802), (92, 47718), (106, 47655), (108, 47646),

Gene: phiBT1_9.1 Start: 27120, Stop: 27620, Start Num: 60

Candidate Starts for phiBT1_9.1:

(Start: 30 @27036 has 3 MA's), (33, 27045), (Start: 60 @27120 has 15 MA's), (74, 27231), (75, 27234), (79, 27297), (94, 27447), (111, 27489),