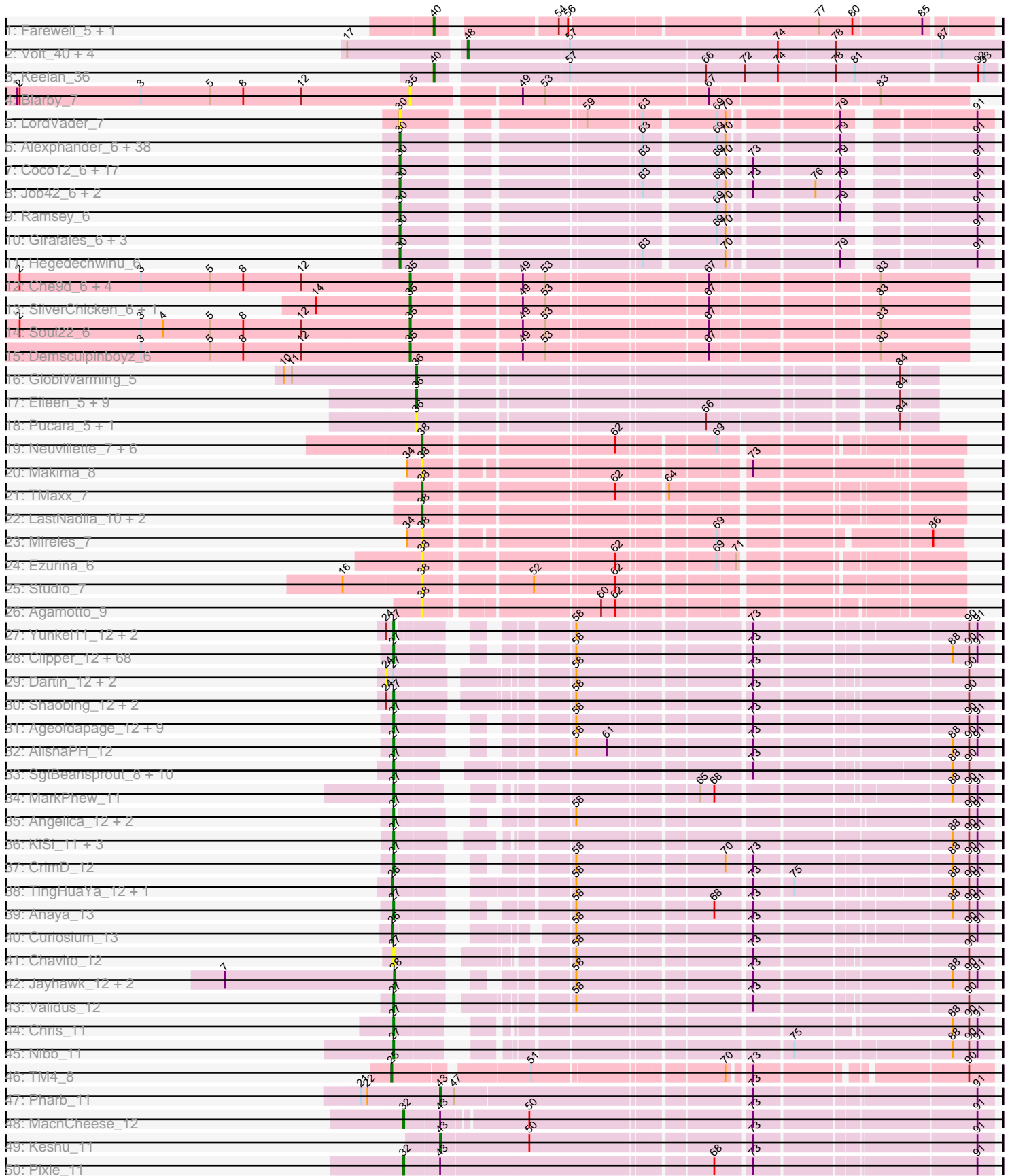
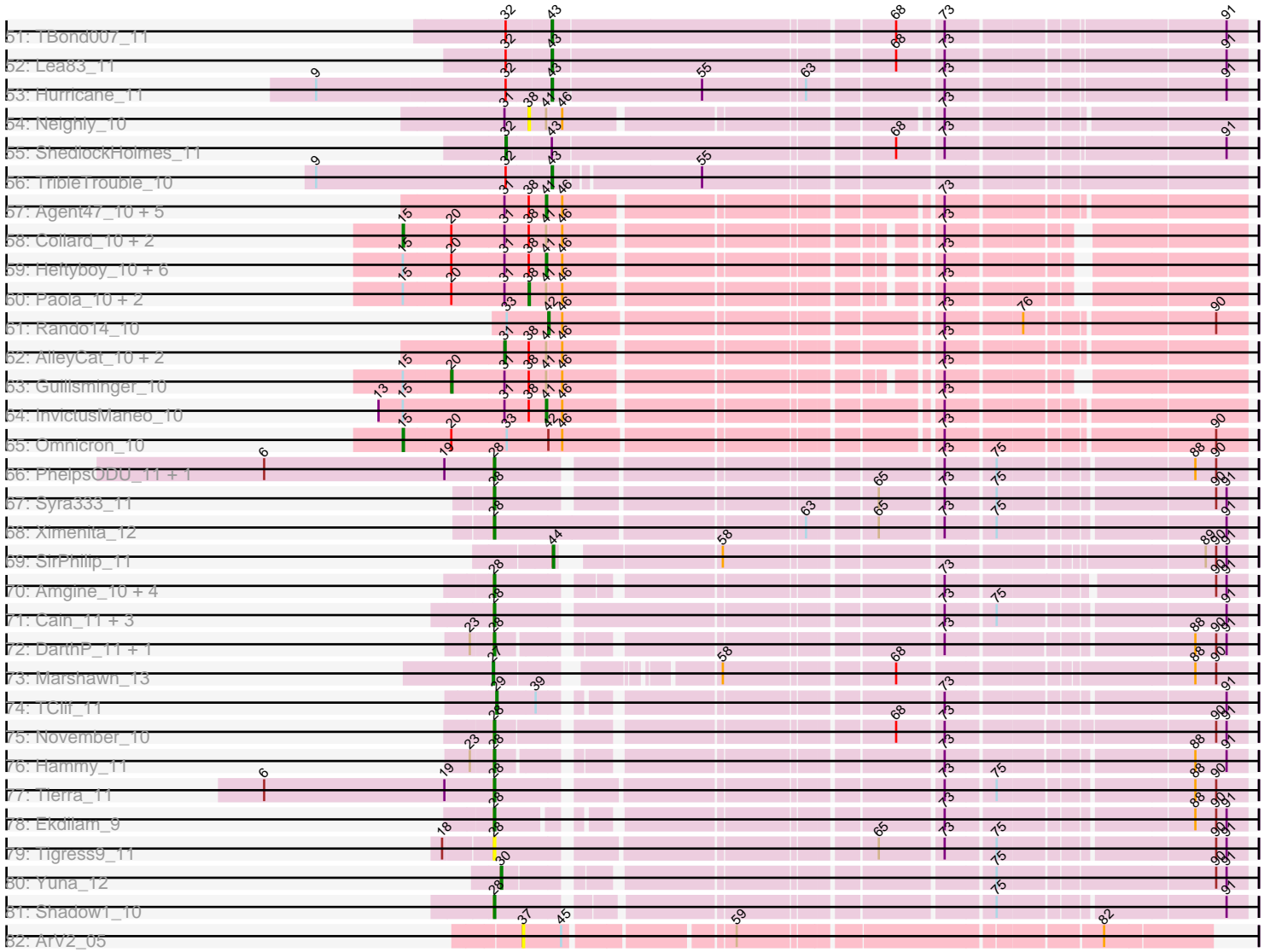


Pham 294378



Pham 294378



Note: Tracks are now grouped by subcluster and scaled. Switching in subcluster is indicated by changes in track color. Track scale is now set by default to display the region 30 bp upstream of start 1 to 30 bp downstream of the last possible start. If this default region is judged to be packed too tightly with annotated starts, the track will be further scaled to only show that region of the ORF with annotated starts. This action will be indicated by adding "Zoomed" to the title. For starts, yellow indicates the location of called starts comprised solely of Glimmer/GeneMark auto-annotations, green indicates the location of called starts with at least 1 manual gene annotation.

Pham 294378 Report

This analysis was run 04/18/26 on database version 643.

Pham number 294378 has 297 members, 46 are drafts.

Phages represented in each track:

- Track 1 : Farewell_5, Sparky_5
- Track 2 : Volt_40, Guey18_43, Fryberger_38, Ronaldo_41, Ziko_41
- Track 3 : Keelan_36
- Track 4 : Blarby_7
- Track 5 : LordVader_7
- Track 6 : Alexphander_6, Leozinho_6, Frankie_6, Beakin_6, BigPhil_6, Bobi_6, Kingsley_6, Lorde_6, RockyHorror_6, OwlsT2W_6, DirtMcgirt_6, Seagreen_6, Boomer_6, Enby_6, BuzzLyseyear_6, Doomslug_6, Juice456_6, JalFarm20_6, Brookers_6, MulchExplorer_6, Stap_6, Cerasum_6, Beanstalk_6, Squirty_6, LittleShirley_6, Tchotchke_6, Sarma624_6, Lucia_6, Brushbloom_6, Oksu_6, Flathead_6, DosHalletts_6, Plumbus_6, Kimberlium_6, UncleRicky_6, SimranZ1_6, Velveteen_6, Drago_6, Tootsieroll_6
- Track 7 : Coco12_6, Emmaloid_6, Aloeri_6, Rialto_6, Starceвич_6, ChickenDinner_6, Piper2020_6, Slim_6, DocMcStuffins_6, TootsiePop_6, Mova_6, DaWorst_6, Awesomesauce_6, Peridot_6, Pollywog_6, Misha28_6, Spikelee_6, Totinger_6
- Track 8 : Job42_6, Marker_6, Madiba_6
- Track 9 : Ramsey_6
- Track 10 : Girafales_6, Mozy_6, Cornucopia_6, Quico_6
- Track 11 : Hegedechwinu_6
- Track 12 : Che9d_6, Yoshi_6, Zapner_7, Jabbawokkie_7, Ogopogo_7
- Track 13 : SilverChicken_6, Avani_6
- Track 14 : Soul22_6
- Track 15 : Demsculpinboyz_6
- Track 16 : GlobiWarming_5
- Track 17 : Eileen_5, Constance_5, NidoQ_5, ChuckDuck_5, Judy_5, Peas_5, PeggyLeg03_5, LittleRon_5, KayMoney_5, NikkiHotWheels_5
- Track 18 : Pucara_5, HotPotato_5
- Track 19 : Neuville_7, Gerri43_7, AnnabelleLee_7, ChamoyPickle_7, CardboardBox_7, Roberts_7, ChipsNGuac_7
- Track 20 : Makima_8
- Track 21 : TMaxx_7
- Track 22 : LastNadiia_10, TripleC_10, Audell_10
- Track 23 : Mireles_7
- Track 24 : Ezurina_6
- Track 25 : Studio_7
- Track 26 : Agamoto_9

- Track 27 : Yunkel11_12, Guanica15_12, Efra2_12
- Track 28 : Clipper_12, JAWS_12, Tiri_12, Capricorn_12, CheetoDust_12, SamuelLPlaqsom_12, Blizzard_12, CallaLilly_12, Adonis_12, Lunahalos_12, BEEST_12, Belladonna_12, Adephagia_12, Tachez_12, HedwigODU_12, Homura_12, YoureAdopted_11, Spock_12, Twitch_12, Veliki_12, MeaningOfLife_12, ShiaSurprise_12, Ganymede_12, Emerson_12, Beezoo_12, Durfee_12, Llorens_12, TreyKay_12, Rosmarinus_12, TiniBug_12, BarrelRoll_12, CaseJules_12, Jarvi_12, TruffulaTree_12, Mynx_12, Asayake_12, Peel_12, BGIluviae_12, CREW_12, Prithvi_12, Anma_12, DrHayes_12, MacKat_12, Geraldini_12, Megsy_12, Padfoot_12, Apocalypse_12, Piatt_12, Topper_12, Dalmuri_12, Hyperbowlee_12, Padpat_12, Bella96_12, Ramen_12, Inky_12, LindNT_12, Jeckyll_12, Zabiza_12, ActinUp_12, Boiiii_12, BaghaKamala_12, TaiwanKao_12, DartGoblin_12, Urkel_12, Zavala_12, Pokerus_11, Atiba_12, QuincyRose_11, Joy99_12
- Track 29 : Dartin_12, McMater_12, Richo_12
- Track 30 : Shaobing_12, Peanam_12, Niklas_12
- Track 31 : Ageofdapage_12, Murucutumbu_12, Pisa1_11, Bern_12, Devera_12, Illumine_12, Pisa4_11, LaterM_12, Dole_12, Stinson_12
- Track 32 : AlishaPH_12
- Track 33 : SgtBeansprout_8, Trice_8, Enkosi_8, Torres_8, Mdavu_8, Teejan_8, Nutello_8, Amelie_8, Nikao_8, LilPharaoh_8, Binglebops_8
- Track 34 : MarkPhew_11
- Track 35 : Angelica_12, Sulley_12, Deby_12
- Track 36 : KiSi_11, Scarlett_11, Oscar_11, LeMond_11
- Track 37 : CrimD_12
- Track 38 : TingHuaYa_12, LastHope_12
- Track 39 : Anaya_13
- Track 40 : Curiosium_13
- Track 41 : Chavito_12
- Track 42 : Jayhawk_12, Rapunzel97_12, Slimphazie_12
- Track 43 : Validus_12
- Track 44 : Chris_11
- Track 45 : Nibb_11
- Track 46 : TM4_8
- Track 47 : Pharb_11
- Track 48 : MacnCheese_12
- Track 49 : Keshu_11
- Track 50 : Pixie_11
- Track 51 : TBond007_11
- Track 52 : Lea83_11
- Track 53 : Hurricane_11
- Track 54 : Neighly_10
- Track 55 : ShedlockHolmes_11
- Track 56 : TribbleTrouble_10
- Track 57 : Agent47_10, Edugator_9, LilDirt_9, Dadosky_10, ViviJ_9, Psycho_10
- Track 58 : Collard_10, Gengar_10, Leston_10
- Track 59 : Heftyboy_10, Thyatira_10, BananenDer11_10, Miryou_10, SoSeph_10, DoubleChamp_10, Waterfoul_10
- Track 60 : Paola_10, Feyre_10, OkiRoe_10
- Track 61 : Rando14_10
- Track 62 : AlleyCat_10, Larva_10, Kratio_9
- Track 63 : Guillsminger_10
- Track 64 : InvictusManeo_10
- Track 65 : Omnicron_10

- Track 66 : PhelpsODU_11, Unicorn_11
- Track 67 : Syra333_11
- Track 68 : Ximenita_12
- Track 69 : SirPhilip_11
- Track 70 : Amgine_10, Ellie_9, Applecrisp_10, Fefferhead_11, Lavahound_10
- Track 71 : Cain_11, Phrank_11, Bryler_11, Sunflower1121_10
- Track 72 : DarthP_11, Amohnition_11
- Track 73 : Marshawn_13
- Track 74 : TClif_11
- Track 75 : November_10
- Track 76 : Hammy_11
- Track 77 : Tierra_11
- Track 78 : Ekdilam_9
- Track 79 : Tigress9_11
- Track 80 : Yuna_12
- Track 81 : Shadow1_10
- Track 82 : ArV2_05

Summary of Final Annotations (See graph section above for start numbers):

The start number called the most often in the published annotations is 27, it was called in 104 of the 251 non-draft genes in the pham.

Genes that call this "Most Annotated" start:

- ActinUp_12, Adephagia_12, Adonis_12, Ageofdapage_12, AlishaPH_12, Amelie_8, Anaya_13, Angelica_12, Anma_12, Apocalypse_12, Asayake_12, Atiba_12, BEEST_12, BGIlluviae_12, BaghaKamala_12, BarrelRoll_12, Beezoo_12, Bella96_12, Belladonna_12, Bern_12, Biglebops_8, Blizzard_12, Boiiii_12, CREW_12, CallaLilly_12, Capricorn_12, CaseJules_12, Chavito_12, CheetoDust_12, Chris_11, Clipper_12, CrimD_12, Dalmuri_12, DartGoblin_12, Deby_12, Devera_12, Dole_12, DrHayes_12, Durfee_12, Efra2_12, Emerson_12, Enkosi_8, Ganymede_12, Geraldini_12, Guanica15_12, HedwigODU_12, Homura_12, Hyperbowlee_12, Illumine_12, Inky_12, JAWS_12, Jarvi_12, Jeckyll_12, Joy99_12, KiSi_11, LaterM_12, LeMond_11, LilPharaoh_8, LindNT_12, Llorens_12, Lunahalos_12, MacKat_12, MarkPhew_11, Marshawn_13, Mdavu_8, MeaningOfLife_12, Megsy_12, Murucutumbu_12, Mynx_12, Nibb_11, Nikao_8, Niklas_12, Nutello_8, Oscar_11, Padfoot_12, Padpat_12, Peanam_12, Peel_12, Piatt_12, Pisa1_11, Pisa4_11, Pokerus_11, Prithvi_12, QuincyRose_11, Ramen_12, Rosmarinus_12, SamuelLPlaqson_12, Scarlett_11, SgtBeansprout_8, Shaobing_12, ShiaSurprise_12, Spock_12, Stinson_12, Sulley_12, Tachez_12, TaiwanKao_12, Teejan_8, TiniBug_12, Tiri_12, Topper_12, Torres_8, TreyKay_12, Trice_8, TruffulaTree_12, Twitch_12, Urkel_12, Validus_12, Veliki_12, YoureAdopted_11, Yunkel11_12, Zabiza_12, Zavala_12,

Genes that have the "Most Annotated" start but do not call it:

- Dartin_12, McMater_12, Richo_12,

Genes that do not have the "Most Annotated" start:

- Agamoto_9, Agent47_10, Alexphander_6, AlleyCat_10, Aloeri_6, Amgine_10, Amohnition_11, AnnabelLee_7, Applecrisp_10, ArV2_05, Audell_10, Avani_6,

Awesomesauce_6, BananenDer11_10, Beakin_6, Beanstalk_6, BigPhil_6, Blarby_7, Bobi_6, Boomer_6, Brookers_6, Brushbloom_6, Bryler_11, BuzzLyseyear_6, Cain_11, CardboardBox_7, Cerasum_6, ChamoyPickle_7, Che9d_6, ChickenDinner_6, ChipsNGuac_7, ChuckDuck_5, Coco12_6, Collard_10, Constance_5, Cornucopia_6, Curiosium_13, DaWorst_6, Dadosky_10, DarthP_11, Demsculpinboyz_6, DirtMcgirt_6, DocMcStuffins_6, Doomslug_6, DosHalletts_6, DoubleChamp_10, Drago_6, Edugator_9, Eileen_5, Ekdilam_9, Ellie_9, Emmaloid_6, Enby_6, Ezurina_6, Farewell_5, Fefferhead_11, Feyre_10, Flathead_6, Frankie_6, Fryberger_38, Gengar_10, Gerri43_7, Girafales_6, GlobiWarming_5, Guey18_43, Guillsminger_10, Hammy_11, Heftyboy_10, Hegedechwinu_6, HotPotato_5, Hurricane_11, InvictusManeo_10, Jabbawokkie_7, JalFarm20_6, Jayhawk_12, Job42_6, Judy_5, Juice456_6, KayMoney_5, Keelan_36, Keshu_11, Kimberlium_6, Kingsley_6, Kratio_9, Larva_10, LastHope_12, LastNadiia_10, Lavahound_10, Lea83_11, Leozinho_6, Leston_10, LilDirt_9, LittleRon_5, LittleShirley_6, LordVader_7, Lorde_6, Lucia_6, MacnCheese_12, Madiba_6, Makima_8, Marker_6, Mireles_7, Miryou_10, Misha28_6, Mova_6, Mozy_6, MulchExplorer_6, Neighly_10, Neuvillelette_7, NidoQ_5, NikkiHotWheels_5, November_10, Ogopogo_7, OkiRoe_10, Oksu_6, Omnicron_10, OwlsT2W_6, Paola_10, Peas_5, PeggyLeg03_5, Peridot_6, Pharb_11, PhelpsODU_11, Phrank_11, Piper2020_6, Pixie_11, Plumbus_6, Pollywog_6, Psycho_10, Pucara_5, Quico_6, Ramsey_6, Rando14_10, Rapunzel97_12, Rialto_6, Roberts_7, RockyHorror_6, Ronaldo_41, Sarma624_6, Seagreen_6, Shadow1_10, ShedlockHolmes_11, SilverChicken_6, SimranZ1_6, SirPhilip_11, Slim_6, Slimphazie_12, SoSeph_10, Soul22_6, Sparky_5, Spikelee_6, Squirty_6, Stap_6, Starceвич_6, Studio_7, Sunflower1121_10, Syra333_11, TBond007_11, TClif_11, TM4_8, TMaxx_7, Tchotchke_6, Thyatira_10, Tierra_11, Tigress9_11, TingHuaYa_12, TootsiePop_6, Tootsieroll_6, Totinger_6, TripleTrouble_10, TripleC_10, UncleRicky_6, Unicorn_11, Velveteen_6, ViviJ_9, Volt_40, Waterfoul_10, Ximenita_12, Yoshi_6, Yuna_12, Zapner_7, Ziko_41,

Summary by start number:

Start 15:

- Found in 16 of 297 (5.4%) of genes in pham
- Manual Annotations of this start: 4 of 251
- Called 25.0% of time when present
- Phage (with cluster) where this start called: Collard_10 (K5), Gengar_10 (K5), Leston_10 (K5), Omnicron_10 (K5),

Start 20:

- Found in 15 of 297 (5.1%) of genes in pham
- Manual Annotations of this start: 1 of 251
- Called 6.7% of time when present
- Phage (with cluster) where this start called: Guillsminger_10 (K5),

Start 24:

- Found in 9 of 297 (3.0%) of genes in pham
- No Manual Annotations of this start.
- Called 33.3% of time when present
- Phage (with cluster) where this start called: Dartin_12 (K1), McMater_12 (K1), Richo_12 (K1),

Start 25:

- Found in 1 of 297 (0.3%) of genes in pham

- Manual Annotations of this start: 1 of 251
- Called 100.0% of time when present
- Phage (with cluster) where this start called: TM4_8 (K2),

Start 26:

- Found in 3 of 297 (1.0%) of genes in pham
- Manual Annotations of this start: 2 of 251
- Called 100.0% of time when present
- Phage (with cluster) where this start called: Curiosium_13 (K1), LastHope_12 (K1), TingHuaYa_12 (K1),

Start 27:

- Found in 115 of 297 (38.7%) of genes in pham
- Manual Annotations of this start: 104 of 251
- Called 97.4% of time when present
- Phage (with cluster) where this start called: ActinUp_12 (K1), Adephegia_12 (K1), Adonis_12 (K1), Ageofdapage_12 (K1), AlishaPH_12 (K1), Amelie_8 (K1), Anaya_13 (K1), Angelica_12 (K1), Anma_12 (K1), Apocalypse_12 (K1), Asayake_12 (K1), Atiba_12 (K1), BEEST_12 (K1), BGlluviae_12 (K1), BaghaKamala_12 (K1), BarrelRoll_12 (K1), Beezoo_12 (K1), Bella96_12 (K1), Belladonna_12 (K1), Bern_12 (K1), Binglebops_8 (K1), Blizzard_12 (K1), Boiiii_12 (K1), CREW_12 (K1), CallaLilly_12 (K1), Capricorn_12 (K1), CaseJules_12 (K1), Chavito_12 (K1), CheetoDust_12 (K1), Chris_11 (K1), Clipper_12 (K1), CrimD_12 (K1), Dalmuri_12 (K1), DartGoblin_12 (K1), Deby_12 (K1), Devera_12 (K1), Dole_12 (K1), DrHayes_12 (K1), Durfee_12 (K1), Efra2_12 (K1), Emerson_12 (K1), Enkosi_8 (K1), Ganymede_12 (K1), Geraldini_12 (K1), Guanica15_12 (K1), HedwigODU_12 (K1), Homura_12 (K1), Hyperbowlee_12 (K1), Illumine_12 (K1), Inky_12 (K1), JAWS_12 (K1), Jarvi_12 (K1), Jeckyll_12 (K1), Joy99_12 (K1), KiSi_11 (K1), LaterM_12 (K1), LeMond_11 (K1), LilPharaoh_8 (K1), LindNT_12 (K1), Llorens_12 (K1), Lunahalos_12 (K1), MacKat_12 (K1), MarkPheW_11 (K1), Marshawn_13 (K6), Mdavu_8 (K1), MeaningOfLife_12 (K1), Megsy_12 (K1), Murucutumbu_12 (K1), Mynx_12 (K1), Nibb_11 (K1), Nikao_8 (K1), Niklas_12 (K1), Nutello_8 (K1), Oscar_11 (K1), Padfoot_12 (K1), Padpat_12 (K1), Peanam_12 (K1), Peel_12 (K1), Piatt_12 (K1), Pisa1_11 (K1), Pisa4_11 (K1), Pokerus_11 (K1), Prithvi_12 (K1), QuincyRose_11 (K1), Ramen_12 (K1), Rosmarinus_12 (K1), SamuelLPlaQson_12 (K1), Scarlett_11 (K1), SgtBeansprout_8 (K1), Shaobing_12 (K1), ShiaSurprise_12 (K1), Spock_12 (K1), Stinson_12 (K1), Sulley_12 (K1), Tachez_12 (K1), TaiwanKao_12 (K1), Teejan_8 (K1), TiniBug_12 (K1), Tiri_12 (K1), Topper_12 (K1), Torres_8 (K1), TreyKay_12 (K1), Trice_8 (K1), TruffulaTree_12 (K1), Twitch_12 (K1), Urkel_12 (K1), Validus_12 (K1), Veliki_12 (K1), YoureAdopted_11 (K1), Yunkel11_12 (K1), Zabiza_12 (K1), Zavala_12 (K1),

Start 28:

- Found in 24 of 297 (8.1%) of genes in pham
- Manual Annotations of this start: 22 of 251
- Called 100.0% of time when present
- Phage (with cluster) where this start called: Amgine_10 (K6), Amohnition_11 (K6), Applecrisp_10 (K6), Bryler_11 (K6), Cain_11 (K6), DarthP_11 (K6), Ekdilam_9 (K6), Ellie_9 (K6), Fefferhead_11 (K6), Hammy_11 (K6), Jayhawk_12 (K1), Lavahound_10 (K6), November_10 (K6), PhelpsODU_11 (K6), Phrank_11 (K6), Rapunzel97_12 (K1), Shadow1_10 (K6), Slimphazie_12 (K1), Sunflower1121_10 (K6), Syra333_11 (K6), Tierra_11 (K6), Tigress9_11 (K6), Unicorn_11 (K6), Ximenita_12 (K6),

Start 29:

- Found in 1 of 297 (0.3%) of genes in pham
- Manual Annotations of this start: 1 of 251
- Called 100.0% of time when present
- Phage (with cluster) where this start called: TClif_11 (K6),

Start 30:

- Found in 68 of 297 (22.9%) of genes in pham
- Manual Annotations of this start: 61 of 251
- Called 100.0% of time when present
- Phage (with cluster) where this start called: Alexphander_6 (F1), Aloeri_6 (F1), Awesomesauce_6 (F1), Beakin_6 (F1), Beanstalk_6 (F1), BigPhil_6 (F1), Bobi_6 (F1), Boomer_6 (F1), Brookers_6 (F1), Brushbloom_6 (F1), BuzzLyseyear_6 (F1), Cerasum_6 (F1), ChickenDinner_6 (F1), Coco12_6 (F1), Cornucopia_6 (F1), DaWorst_6 (F1), DirtMcgirt_6 (F1), DocMcStuffins_6 (F1), Doomslug_6 (F), DosHalletts_6 (F1), Drago_6 (F1), Emmaloid_6 (F1), Enby_6 (F1), Flathead_6 (F1), Frankie_6 (F1), Girafales_6 (F1), Hegedechwinu_6 (F1), JalFarm20_6 (F1), Job42_6 (F1), Juice456_6 (F1), Kimberlium_6 (F1), Kingsley_6 (F1), Leozinho_6 (F1), LittleShirley_6 (F1), LordVader_7 (F), Lorde_6 (F1), Lucia_6 (F1), Madiba_6 (F1), Marker_6 (F1), Misha28_6 (F1), Mova_6 (F1), Mozy_6 (F1), MulchExplorer_6 (F1), Oksu_6 (F1), OwlsT2W_6 (F1), Peridot_6 (F1), Piper2020_6 (F1), Plumbus_6 (F1), Pollywog_6 (F1), Quico_6 (F1), Ramsey_6 (F1), Rialto_6 (F1), RockyHorror_6 (F1), Sarma624_6 (F1), Seagreen_6 (F1), SimranZ1_6 (F1), Slim_6 (F1), Spikelee_6 (F1), Squirty_6 (F3), Stap_6 (F1), Starcevich_6 (F1), Tchotchke_6 (F1), TootsiePop_6 (F1), Tootsieroll_6 (F1), Totinger_6 (F1), UncleRicky_6 (F1), Velveteen_6 (F1), Yuna_12 (K6),

Start 31:

- Found in 25 of 297 (8.4%) of genes in pham
- Manual Annotations of this start: 3 of 251
- Called 12.0% of time when present
- Phage (with cluster) where this start called: AlleyCat_10 (K5), Kratio_9 (K5), Larva_10 (K5),

Start 32:

- Found in 7 of 297 (2.4%) of genes in pham
- Manual Annotations of this start: 3 of 251
- Called 42.9% of time when present
- Phage (with cluster) where this start called: MacnCheese_12 (K3), Pixie_11 (K3), ShedlockHolmes_11 (K3),

Start 35:

- Found in 10 of 297 (3.4%) of genes in pham
- Manual Annotations of this start: 8 of 251
- Called 100.0% of time when present
- Phage (with cluster) where this start called: Avani_6 (F2), Blarby_7 (F), Che9d_6 (F2), Demsculpinboyz_6 (F2), Jabbawokkie_7 (F2), Ogopogo_7 (F1), SilverChicken_6 (F2), Soul22_6 (F2), Yoshi_6 (F2), Zapner_7 (F2),

Start 36:

- Found in 13 of 297 (4.4%) of genes in pham
- Manual Annotations of this start: 8 of 251
- Called 100.0% of time when present

- Phage (with cluster) where this start called: ChuckDuck_5 (FA), Constance_5 (FA), Eileen_5 (FA), GlobiWarming_5 (FA), HotPotato_5 (FA), Judy_5 (FA), KayMoney_5 (FA), LittleRon_5 (FA), NidoQ_5 (FA), NikkiHotWheels_5 (FA), Peas_5 (FA), PeggyLeg03_5 (FA), Pucara_5 (FA),

Start 37:

- Found in 1 of 297 (0.3%) of genes in pham
- No Manual Annotations of this start.
- Called 100.0% of time when present
- Phage (with cluster) where this start called: ArV2_05 (singleton),

Start 38:

- Found in 41 of 297 (13.8%) of genes in pham
- Manual Annotations of this start: 6 of 251
- Called 48.8% of time when present
- Phage (with cluster) where this start called: Agamoto_9 (FR), AnnabelLee_7 (FR), Audell_10 (FR), CardboardBox_7 (FR), ChamoyPickle_7 (FR), ChipsNGuac_7 (FR), Ezurina_6 (FR), Feyre_10 (K5), Gerri43_7 (FR), LastNadiia_10 (FR), Makima_8 (FR), Mireles_7 (FR), Neighly_10 (K3), Neuville_7 (FR), OkiRoe_10 (K5), Paola_10 (K5), Roberts_7 (FR), Studio_7 (FR), TMaxx_7 (FR), TripleC_10 (FR),

Start 40:

- Found in 3 of 297 (1.0%) of genes in pham
- Manual Annotations of this start: 3 of 251
- Called 100.0% of time when present
- Phage (with cluster) where this start called: Farewell_5 (AF), Keelan_36 (DP), Sparky_5 (AF),

Start 41:

- Found in 25 of 297 (8.4%) of genes in pham
- Manual Annotations of this start: 11 of 251
- Called 56.0% of time when present
- Phage (with cluster) where this start called: Agent47_10 (K5), BananenDer11_10 (K5), Dadosky_10 (K5), DoubleChamp_10 (K5), Edugator_9 (K5), Heftyboy_10 (K5), InvictusManeo_10 (K5), LilDirt_9 (K5), Miryou_10 (K5), Psycho_10 (K5), SoSeph_10 (K5), Thyatira_10 (K5), ViviJ_9 (K5), Waterfoul_10 (K5),

Start 42:

- Found in 2 of 297 (0.7%) of genes in pham
- Manual Annotations of this start: 1 of 251
- Called 50.0% of time when present
- Phage (with cluster) where this start called: Rando14_10 (K5),

Start 43:

- Found in 9 of 297 (3.0%) of genes in pham
- Manual Annotations of this start: 6 of 251
- Called 66.7% of time when present
- Phage (with cluster) where this start called: Hurricane_11 (K3), Keshu_11 (K3), Lea83_11 (K3), Pharb_11 (K3), TBond007_11 (K3), TribbleTrouble_10 (K3),

Start 44:

- Found in 1 of 297 (0.3%) of genes in pham
- Manual Annotations of this start: 1 of 251

- Called 100.0% of time when present
- Phage (with cluster) where this start called: SirPhilip_11 (K6),

Start 48:

- Found in 5 of 297 (1.7%) of genes in pham
- Manual Annotations of this start: 5 of 251
- Called 100.0% of time when present
- Phage (with cluster) where this start called: Fryberger_38 (DP), Guey18_43 (DP), Ronaldo_41 (DP), Volt_40 (DP), Ziko_41 (DP),

Summary by clusters:

There are 14 clusters represented in this pham: F1, FR, F3, AF, F, singleton, K3, FA, K1, K6, K5, F2, K2, DP,

Info for manual annotations of cluster AF:

- Start number 40 was manually annotated 2 times for cluster AF.

Info for manual annotations of cluster DP:

- Start number 40 was manually annotated 1 time for cluster DP.
- Start number 48 was manually annotated 5 times for cluster DP.

Info for manual annotations of cluster F1:

- Start number 30 was manually annotated 59 times for cluster F1.
- Start number 35 was manually annotated 1 time for cluster F1.

Info for manual annotations of cluster F2:

- Start number 35 was manually annotated 7 times for cluster F2.

Info for manual annotations of cluster F3:

- Start number 30 was manually annotated 1 time for cluster F3.

Info for manual annotations of cluster FA:

- Start number 36 was manually annotated 8 times for cluster FA.

Info for manual annotations of cluster FR:

- Start number 38 was manually annotated 3 times for cluster FR.

Info for manual annotations of cluster K1:

- Start number 26 was manually annotated 2 times for cluster K1.
- Start number 27 was manually annotated 103 times for cluster K1.
- Start number 28 was manually annotated 3 times for cluster K1.

Info for manual annotations of cluster K2:

- Start number 25 was manually annotated 1 time for cluster K2.

Info for manual annotations of cluster K3:

- Start number 32 was manually annotated 3 times for cluster K3.
- Start number 43 was manually annotated 6 times for cluster K3.

Info for manual annotations of cluster K5:

- Start number 15 was manually annotated 4 times for cluster K5.

- Start number 20 was manually annotated 1 time for cluster K5.
- Start number 31 was manually annotated 3 times for cluster K5.
- Start number 38 was manually annotated 3 times for cluster K5.
- Start number 41 was manually annotated 11 times for cluster K5.
- Start number 42 was manually annotated 1 time for cluster K5.

Info for manual annotations of cluster K6:

- Start number 27 was manually annotated 1 time for cluster K6.
- Start number 28 was manually annotated 19 times for cluster K6.
- Start number 29 was manually annotated 1 time for cluster K6.
- Start number 30 was manually annotated 1 time for cluster K6.
- Start number 44 was manually annotated 1 time for cluster K6.

Gene Information:

Gene: ActinUp_12 Start: 7313, Stop: 7855, Start Num: 27

Candidate Starts for ActinUp_12:

(Start: 27 @7313 has 104 MA's), (58, 7448), (73, 7616), (88, 7811), (90, 7829), (91, 7838),

Gene: Adephagia_12 Start: 7313, Stop: 7855, Start Num: 27

Candidate Starts for Adephagia_12:

(Start: 27 @7313 has 104 MA's), (58, 7448), (73, 7616), (88, 7811), (90, 7829), (91, 7838),

Gene: Adonis_12 Start: 7324, Stop: 7866, Start Num: 27

Candidate Starts for Adonis_12:

(Start: 27 @7324 has 104 MA's), (58, 7459), (73, 7627), (88, 7822), (90, 7840), (91, 7849),

Gene: Agamoto_9 Start: 8117, Stop: 8620, Start Num: 38

Candidate Starts for Agamoto_9:

(Start: 38 @8117 has 6 MA's), (60, 8285), (62, 8300),

Gene: Agent47_10 Start: 7496, Stop: 8026, Start Num: 41

Candidate Starts for Agent47_10:

(Start: 31 @7460 has 3 MA's), (Start: 38 @7481 has 6 MA's), (Start: 41 @7496 has 11 MA's), (46, 7508), (73, 7793),

Gene: Ageofdapage_12 Start: 7253, Stop: 7795, Start Num: 27

Candidate Starts for Ageofdapage_12:

(Start: 27 @7253 has 104 MA's), (58, 7388), (73, 7556), (90, 7769), (91, 7778),

Gene: Alexphander_6 Start: 4408, Stop: 4944, Start Num: 30

Candidate Starts for Alexphander_6:

(Start: 30 @4408 has 61 MA's), (63, 4630), (69, 4699), (70, 4708), (79, 4810), (91, 4927),

Gene: AlishaPH_12 Start: 7315, Stop: 7857, Start Num: 27

Candidate Starts for AlishaPH_12:

(Start: 27 @7315 has 104 MA's), (58, 7450), (61, 7483), (73, 7618), (88, 7813), (90, 7831), (91, 7840),

Gene: AlleyCat_10 Start: 7355, Stop: 7921, Start Num: 31

Candidate Starts for AlleyCat_10:

(Start: 31 @7355 has 3 MA's), (Start: 38 @7376 has 6 MA's), (Start: 41 @7391 has 11 MA's), (46, 7403), (73, 7688),

Gene: Aloeri_6 Start: 4412, Stop: 4948, Start Num: 30

Candidate Starts for Aloeri_6:

(Start: 30 @4412 has 61 MA's), (63, 4634), (69, 4703), (70, 4712), (73, 4730), (79, 4814), (91, 4931),

Gene: Amelie_8 Start: 6589, Stop: 7137, Start Num: 27

Candidate Starts for Amelie_8:

(Start: 27 @6589 has 104 MA's), (73, 6904), (88, 7093), (90, 7111),

Gene: Amgine_10 Start: 6944, Stop: 7507, Start Num: 28

Candidate Starts for Amgine_10:

(Start: 28 @6944 has 22 MA's), (73, 7274), (90, 7481), (91, 7490),

Gene: Amohnition_11 Start: 7198, Stop: 7755, Start Num: 28

Candidate Starts for Amohnition_11:

(23, 7180), (Start: 28 @7198 has 22 MA's), (73, 7522), (88, 7711), (90, 7729), (91, 7738),

Gene: Anaya_13 Start: 7316, Stop: 7855, Start Num: 27

Candidate Starts for Anaya_13:

(Start: 27 @7316 has 104 MA's), (58, 7451), (68, 7583), (73, 7619), (88, 7811), (90, 7829), (91, 7838),

Gene: Angelica_12 Start: 7293, Stop: 7826, Start Num: 27

Candidate Starts for Angelica_12:

(Start: 27 @7293 has 104 MA's), (58, 7422), (90, 7800), (91, 7809),

Gene: Anma_12 Start: 7263, Stop: 7805, Start Num: 27

Candidate Starts for Anma_12:

(Start: 27 @7263 has 104 MA's), (58, 7398), (73, 7566), (88, 7761), (90, 7779), (91, 7788),

Gene: AnnabelLee_7 Start: 4967, Stop: 5473, Start Num: 38

Candidate Starts for AnnabelLee_7:

(Start: 38 @4967 has 6 MA's), (62, 5153), (69, 5246),

Gene: Apocalypse_12 Start: 7291, Stop: 7833, Start Num: 27

Candidate Starts for Apocalypse_12:

(Start: 27 @7291 has 104 MA's), (58, 7426), (73, 7594), (88, 7789), (90, 7807), (91, 7816),

Gene: Applecrisp_10 Start: 7342, Stop: 7908, Start Num: 28

Candidate Starts for Applecrisp_10:

(Start: 28 @7342 has 22 MA's), (73, 7675), (90, 7882), (91, 7891),

Gene: ArV2_05 Start: 4203, Stop: 4730, Start Num: 37

Candidate Starts for ArV2_05:

(37, 4203), (45, 4236), (59, 4362), (82, 4641),

Gene: Asayake_12 Start: 7357, Stop: 7899, Start Num: 27

Candidate Starts for Asayake_12:

(Start: 27 @7357 has 104 MA's), (58, 7492), (73, 7660), (88, 7855), (90, 7873), (91, 7882),

Gene: Atiba_12 Start: 7279, Stop: 7821, Start Num: 27

Candidate Starts for Atiba_12:

(Start: 27 @7279 has 104 MA's), (58, 7414), (73, 7582), (88, 7777), (90, 7795), (91, 7804),

Gene: Audell_10 Start: 8386, Stop: 8895, Start Num: 38

Candidate Starts for Audell_10:

(Start: 38 @8386 has 6 MA's),

Gene: Avani_6 Start: 4307, Stop: 4855, Start Num: 35

Candidate Starts for Avani_6:

(14, 4205), (Start: 35 @4307 has 8 MA's), (49, 4412), (53, 4436), (67, 4595), (83, 4760),

Gene: Awesomesauce_6 Start: 4411, Stop: 4947, Start Num: 30

Candidate Starts for Awesomesauce_6:

(Start: 30 @4411 has 61 MA's), (63, 4633), (69, 4702), (70, 4711), (73, 4729), (79, 4813), (91, 4930),

Gene: BEEST_12 Start: 7357, Stop: 7899, Start Num: 27

Candidate Starts for BEEST_12:

(Start: 27 @7357 has 104 MA's), (58, 7492), (73, 7660), (88, 7855), (90, 7873), (91, 7882),

Gene: BGlluviae_12 Start: 7357, Stop: 7899, Start Num: 27

Candidate Starts for BGlluviae_12:

(Start: 27 @7357 has 104 MA's), (58, 7492), (73, 7660), (88, 7855), (90, 7873), (91, 7882),

Gene: BaghaKamala_12 Start: 7289, Stop: 7825, Start Num: 27

Candidate Starts for BaghaKamala_12:

(Start: 27 @7289 has 104 MA's), (58, 7418), (73, 7586), (88, 7781), (90, 7799), (91, 7808),

Gene: BananenDer11_10 Start: 7478, Stop: 7987, Start Num: 41

Candidate Starts for BananenDer11_10:

(Start: 15 @7358 has 4 MA's), (Start: 20 @7397 has 1 MA's), (Start: 31 @7442 has 3 MA's), (Start: 38 @7463 has 6 MA's), (Start: 41 @7478 has 11 MA's), (46, 7490), (73, 7763),

Gene: BarrelRoll_12 Start: 7307, Stop: 7849, Start Num: 27

Candidate Starts for BarrelRoll_12:

(Start: 27 @7307 has 104 MA's), (58, 7442), (73, 7610), (88, 7805), (90, 7823), (91, 7832),

Gene: Beakin_6 Start: 4411, Stop: 4947, Start Num: 30

Candidate Starts for Beakin_6:

(Start: 30 @4411 has 61 MA's), (63, 4633), (69, 4702), (70, 4711), (79, 4813), (91, 4930),

Gene: Beanstalk_6 Start: 4408, Stop: 4944, Start Num: 30

Candidate Starts for Beanstalk_6:

(Start: 30 @4408 has 61 MA's), (63, 4630), (69, 4699), (70, 4708), (79, 4810), (91, 4927),

Gene: Beezoo_12 Start: 7339, Stop: 7875, Start Num: 27

Candidate Starts for Beezoo_12:

(Start: 27 @7339 has 104 MA's), (58, 7468), (73, 7636), (88, 7831), (90, 7849), (91, 7858),

Gene: Bella96_12 Start: 7242, Stop: 7784, Start Num: 27

Candidate Starts for Bella96_12:

(Start: 27 @7242 has 104 MA's), (58, 7377), (73, 7545), (88, 7740), (90, 7758), (91, 7767),

Gene: Belladonna_12 Start: 7357, Stop: 7899, Start Num: 27

Candidate Starts for Belladonna_12:

(Start: 27 @7357 has 104 MA's), (58, 7492), (73, 7660), (88, 7855), (90, 7873), (91, 7882),

Gene: Bern_12 Start: 7282, Stop: 7815, Start Num: 27

Candidate Starts for Bern_12:

(Start: 27 @7282 has 104 MA's), (58, 7411), (73, 7579), (90, 7789), (91, 7798),

Gene: BigPhil_6 Start: 4408, Stop: 4944, Start Num: 30

Candidate Starts for BigPhil_6:

(Start: 30 @4408 has 61 MA's), (63, 4630), (69, 4699), (70, 4708), (79, 4810), (91, 4927),

Gene: Binglebops_8 Start: 6589, Stop: 7137, Start Num: 27

Candidate Starts for Binglebops_8:

(Start: 27 @6589 has 104 MA's), (73, 6904), (88, 7093), (90, 7111),

Gene: Blarby_7 Start: 4831, Stop: 5379, Start Num: 35

Candidate Starts for Blarby_7:

(1, 4405), (2, 4408), (3, 4540), (5, 4615), (8, 4651), (12, 4714), (Start: 35 @4831 has 8 MA's), (49, 4936), (53, 4960), (67, 5119), (83, 5284),

Gene: Blizzard_12 Start: 7357, Stop: 7899, Start Num: 27

Candidate Starts for Blizzard_12:

(Start: 27 @7357 has 104 MA's), (58, 7492), (73, 7660), (88, 7855), (90, 7873), (91, 7882),

Gene: Bobi_6 Start: 4408, Stop: 4944, Start Num: 30

Candidate Starts for Bobi_6:

(Start: 30 @4408 has 61 MA's), (63, 4630), (69, 4699), (70, 4708), (79, 4810), (91, 4927),

Gene: Boiiii_12 Start: 7357, Stop: 7899, Start Num: 27

Candidate Starts for Boiiii_12:

(Start: 27 @7357 has 104 MA's), (58, 7492), (73, 7660), (88, 7855), (90, 7873), (91, 7882),

Gene: Boomer_6 Start: 4408, Stop: 4944, Start Num: 30

Candidate Starts for Boomer_6:

(Start: 30 @4408 has 61 MA's), (63, 4630), (69, 4699), (70, 4708), (79, 4810), (91, 4927),

Gene: Brookers_6 Start: 4408, Stop: 4944, Start Num: 30

Candidate Starts for Brookers_6:

(Start: 30 @4408 has 61 MA's), (63, 4630), (69, 4699), (70, 4708), (79, 4810), (91, 4927),

Gene: Brushbloom_6 Start: 4408, Stop: 4944, Start Num: 30

Candidate Starts for Brushbloom_6:

(Start: 30 @4408 has 61 MA's), (63, 4630), (69, 4699), (70, 4708), (79, 4810), (91, 4927),

Gene: Bryler_11 Start: 6246, Stop: 6824, Start Num: 28

Candidate Starts for Bryler_11:

(Start: 28 @6246 has 22 MA's), (73, 6591), (75, 6630), (91, 6807),

Gene: BuzzLyseyear_6 Start: 4407, Stop: 4943, Start Num: 30

Candidate Starts for BuzzLyseyear_6:

(Start: 30 @4407 has 61 MA's), (63, 4629), (69, 4698), (70, 4707), (79, 4809), (91, 4926),

Gene: CREW_12 Start: 7357, Stop: 7899, Start Num: 27

Candidate Starts for CREW_12:

(Start: 27 @7357 has 104 MA's), (58, 7492), (73, 7660), (88, 7855), (90, 7873), (91, 7882),

Gene: Cain_11 Start: 6234, Stop: 6812, Start Num: 28

Candidate Starts for Cain_11:

(Start: 28 @6234 has 22 MA's), (73, 6579), (75, 6618), (91, 6795),

Gene: CallaLilly_12 Start: 7286, Stop: 7822, Start Num: 27

Candidate Starts for CallaLilly_12:

(Start: 27 @7286 has 104 MA's), (58, 7415), (73, 7583), (88, 7778), (90, 7796), (91, 7805),

Gene: Capricorn_12 Start: 7357, Stop: 7899, Start Num: 27

Candidate Starts for Capricorn_12:

(Start: 27 @7357 has 104 MA's), (58, 7492), (73, 7660), (88, 7855), (90, 7873), (91, 7882),

Gene: CardboardBox_7 Start: 4967, Stop: 5473, Start Num: 38

Candidate Starts for CardboardBox_7:

(Start: 38 @4967 has 6 MA's), (62, 5153), (69, 5246),

Gene: CaseJules_12 Start: 7357, Stop: 7899, Start Num: 27

Candidate Starts for CaseJules_12:

(Start: 27 @7357 has 104 MA's), (58, 7492), (73, 7660), (88, 7855), (90, 7873), (91, 7882),

Gene: Cerasum_6 Start: 4408, Stop: 4944, Start Num: 30

Candidate Starts for Cerasum_6:

(Start: 30 @4408 has 61 MA's), (63, 4630), (69, 4699), (70, 4708), (79, 4810), (91, 4927),

Gene: ChamoyPickle_7 Start: 4967, Stop: 5473, Start Num: 38

Candidate Starts for ChamoyPickle_7:

(Start: 38 @4967 has 6 MA's), (62, 5153), (69, 5246),

Gene: Chavito_12 Start: 6370, Stop: 6924, Start Num: 27

Candidate Starts for Chavito_12:

(Start: 27 @6370 has 104 MA's), (58, 6520), (73, 6688), (90, 6898),

Gene: Che9d_6 Start: 4316, Stop: 4864, Start Num: 35

Candidate Starts for Che9d_6:

(2, 3893), (3, 4025), (5, 4100), (8, 4136), (12, 4199), (Start: 35 @4316 has 8 MA's), (49, 4421), (53, 4445), (67, 4604), (83, 4769),

Gene: CheetoDust_12 Start: 7333, Stop: 7875, Start Num: 27

Candidate Starts for CheetoDust_12:

(Start: 27 @7333 has 104 MA's), (58, 7468), (73, 7636), (88, 7831), (90, 7849), (91, 7858),

Gene: ChickenDinner_6 Start: 4412, Stop: 4948, Start Num: 30

Candidate Starts for ChickenDinner_6:

(Start: 30 @4412 has 61 MA's), (63, 4634), (69, 4703), (70, 4712), (73, 4730), (79, 4814), (91, 4931),

Gene: ChipsNGuac_7 Start: 4967, Stop: 5473, Start Num: 38

Candidate Starts for ChipsNGuac_7:

(Start: 38 @4967 has 6 MA's), (62, 5153), (69, 5246),

Gene: Chris_11 Start: 6182, Stop: 6724, Start Num: 27

Candidate Starts for Chris_11:

(Start: 27 @6182 has 104 MA's), (88, 6680), (90, 6698), (91, 6707),

Gene: ChuckDuck_5 Start: 5037, Stop: 5531, Start Num: 36

Candidate Starts for ChuckDuck_5:

(Start: 36 @5037 has 8 MA's), (84, 5493),

Gene: Clipper_12 Start: 7333, Stop: 7875, Start Num: 27

Candidate Starts for Clipper_12:

(Start: 27 @7333 has 104 MA's), (58, 7468), (73, 7636), (88, 7831), (90, 7849), (91, 7858),

Gene: Coco12_6 Start: 4408, Stop: 4944, Start Num: 30

Candidate Starts for Coco12_6:

(Start: 30 @4408 has 61 MA's), (63, 4630), (69, 4699), (70, 4708), (73, 4726), (79, 4810), (91, 4927),

Gene: Collard_10 Start: 7358, Stop: 7987, Start Num: 15

Candidate Starts for Collard_10:

(Start: 15 @7358 has 4 MA's), (Start: 20 @7397 has 1 MA's), (Start: 31 @7442 has 3 MA's), (Start: 38 @7463 has 6 MA's), (Start: 41 @7478 has 11 MA's), (46, 7490), (73, 7763),

Gene: Constance_5 Start: 5077, Stop: 5574, Start Num: 36

Candidate Starts for Constance_5:

(Start: 36 @5077 has 8 MA's), (84, 5536),

Gene: Cornucopia_6 Start: 4408, Stop: 4944, Start Num: 30

Candidate Starts for Cornucopia_6:

(Start: 30 @4408 has 61 MA's), (69, 4699), (70, 4708), (91, 4927),

Gene: CrimD_12 Start: 7285, Stop: 7827, Start Num: 27

Candidate Starts for CrimD_12:

(Start: 27 @7285 has 104 MA's), (58, 7420), (70, 7564), (73, 7588), (88, 7783), (90, 7801), (91, 7810),

Gene: Curiosium_13 Start: 6689, Stop: 7222, Start Num: 26

Candidate Starts for Curiosium_13:

(Start: 26 @6689 has 2 MA's), (58, 6824), (73, 6992), (90, 7196), (91, 7205),

Gene: DaWorst_6 Start: 4409, Stop: 4945, Start Num: 30

Candidate Starts for DaWorst_6:

(Start: 30 @4409 has 61 MA's), (63, 4631), (69, 4700), (70, 4709), (73, 4727), (79, 4811), (91, 4928),

Gene: Dadosky_10 Start: 7391, Stop: 7921, Start Num: 41

Candidate Starts for Dadosky_10:

(Start: 31 @7355 has 3 MA's), (Start: 38 @7376 has 6 MA's), (Start: 41 @7391 has 11 MA's), (46, 7403), (73, 7688),

Gene: Dalmuri_12 Start: 7357, Stop: 7899, Start Num: 27

Candidate Starts for Dalmuri_12:

(Start: 27 @7357 has 104 MA's), (58, 7492), (73, 7660), (88, 7855), (90, 7873), (91, 7882),

Gene: DartGoblin_12 Start: 7242, Stop: 7784, Start Num: 27

Candidate Starts for DartGoblin_12:

(Start: 27 @7242 has 104 MA's), (58, 7377), (73, 7545), (88, 7740), (90, 7758), (91, 7767),

Gene: DarthP_11 Start: 7198, Stop: 7755, Start Num: 28

Candidate Starts for DarthP_11:

(23, 7180), (Start: 28 @7198 has 22 MA's), (73, 7522), (88, 7711), (90, 7729), (91, 7738),

Gene: Dartin_12 Start: 6370, Stop: 6936, Start Num: 24

Candidate Starts for Dartin_12:

(24, 6370), (Start: 27 @6376 has 104 MA's), (58, 6532), (73, 6700), (90, 6910),

Gene: Deby_12 Start: 7293, Stop: 7826, Start Num: 27

Candidate Starts for Deby_12:

(Start: 27 @7293 has 104 MA's), (58, 7422), (90, 7800), (91, 7809),

Gene: Demsculpinboyz_6 Start: 4307, Stop: 4855, Start Num: 35

Candidate Starts for Demsculpinboyz_6:

(3, 4016), (5, 4091), (8, 4127), (12, 4190), (Start: 35 @4307 has 8 MA's), (49, 4412), (53, 4436), (67, 4595), (83, 4760),

Gene: Devera_12 Start: 7321, Stop: 7854, Start Num: 27

Candidate Starts for Devera_12:

(Start: 27 @7321 has 104 MA's), (58, 7447), (73, 7615), (90, 7828), (91, 7837),

Gene: DirtMcgirt_6 Start: 4410, Stop: 4946, Start Num: 30

Candidate Starts for DirtMcgirt_6:

(Start: 30 @4410 has 61 MA's), (63, 4632), (69, 4701), (70, 4710), (79, 4812), (91, 4929),

Gene: DocMcStuffins_6 Start: 4412, Stop: 4948, Start Num: 30

Candidate Starts for DocMcStuffins_6:

(Start: 30 @4412 has 61 MA's), (63, 4634), (69, 4703), (70, 4712), (73, 4730), (79, 4814), (91, 4931),

Gene: Dole_12 Start: 7321, Stop: 7854, Start Num: 27

Candidate Starts for Dole_12:

(Start: 27 @7321 has 104 MA's), (58, 7447), (73, 7615), (90, 7828), (91, 7837),

Gene: Doomslug_6 Start: 4408, Stop: 4944, Start Num: 30

Candidate Starts for Doomslug_6:

(Start: 30 @4408 has 61 MA's), (63, 4630), (69, 4699), (70, 4708), (79, 4810), (91, 4927),

Gene: DosHalletts_6 Start: 4408, Stop: 4944, Start Num: 30

Candidate Starts for DosHalletts_6:

(Start: 30 @4408 has 61 MA's), (63, 4630), (69, 4699), (70, 4708), (79, 4810), (91, 4927),

Gene: DoubleChamp_10 Start: 7478, Stop: 7987, Start Num: 41

Candidate Starts for DoubleChamp_10:

(Start: 15 @7358 has 4 MA's), (Start: 20 @7397 has 1 MA's), (Start: 31 @7442 has 3 MA's), (Start: 38 @7463 has 6 MA's), (Start: 41 @7478 has 11 MA's), (46, 7490), (73, 7763),

Gene: DrHayes_12 Start: 7263, Stop: 7805, Start Num: 27

Candidate Starts for DrHayes_12:

(Start: 27 @7263 has 104 MA's), (58, 7398), (73, 7566), (88, 7761), (90, 7779), (91, 7788),

Gene: Drago_6 Start: 4408, Stop: 4944, Start Num: 30

Candidate Starts for Drago_6:

(Start: 30 @4408 has 61 MA's), (63, 4630), (69, 4699), (70, 4708), (79, 4810), (91, 4927),

Gene: Durfee_12 Start: 7357, Stop: 7899, Start Num: 27

Candidate Starts for Durfee_12:

(Start: 27 @7357 has 104 MA's), (58, 7492), (73, 7660), (88, 7855), (90, 7873), (91, 7882),

Gene: Edugator_9 Start: 7391, Stop: 7921, Start Num: 41

Candidate Starts for Edugator_9:

(Start: 31 @7355 has 3 MA's), (Start: 38 @7376 has 6 MA's), (Start: 41 @7391 has 11 MA's), (46, 7403), (73, 7688),

Gene: Efra2_12 Start: 6263, Stop: 6796, Start Num: 27

Candidate Starts for Efra2_12:

(24, 6257), (Start: 27 @6263 has 104 MA's), (58, 6392), (73, 6560), (90, 6770), (91, 6779),

Gene: Eileen_5 Start: 5037, Stop: 5534, Start Num: 36

Candidate Starts for Eileen_5:

(Start: 36 @5037 has 8 MA's), (84, 5496),

Gene: Ekdilam_9 Start: 6928, Stop: 7482, Start Num: 28

Candidate Starts for Ekdilam_9:

(Start: 28 @6928 has 22 MA's), (73, 7249), (88, 7438), (90, 7456), (91, 7465),

Gene: Ellie_9 Start: 7015, Stop: 7581, Start Num: 28

Candidate Starts for Ellie_9:

(Start: 28 @7015 has 22 MA's), (73, 7348), (90, 7555), (91, 7564),

Gene: Emerson_12 Start: 7316, Stop: 7858, Start Num: 27

Candidate Starts for Emerson_12:

(Start: 27 @7316 has 104 MA's), (58, 7451), (73, 7619), (88, 7814), (90, 7832), (91, 7841),

Gene: Emmaloid_6 Start: 4409, Stop: 4945, Start Num: 30

Candidate Starts for Emmaloid_6:

(Start: 30 @4409 has 61 MA's), (63, 4631), (69, 4700), (70, 4709), (73, 4727), (79, 4811), (91, 4928),

Gene: Enby_6 Start: 4408, Stop: 4944, Start Num: 30

Candidate Starts for Enby_6:

(Start: 30 @4408 has 61 MA's), (63, 4630), (69, 4699), (70, 4708), (79, 4810), (91, 4927),

Gene: Enkosi_8 Start: 6589, Stop: 7137, Start Num: 27

Candidate Starts for Enkosi_8:

(Start: 27 @6589 has 104 MA's), (73, 6904), (88, 7093), (90, 7111),

Gene: Ezurina_6 Start: 4583, Stop: 5089, Start Num: 38

Candidate Starts for Ezurina_6:

(Start: 38 @4583 has 6 MA's), (62, 4769), (69, 4862), (71, 4880),

Gene: Farewell_5 Start: 4759, Stop: 5304, Start Num: 40

Candidate Starts for Farewell_5:

(Start: 40 @4759 has 3 MA's), (54, 4870), (56, 4879), (77, 5128), (80, 5164), (85, 5236),

Gene: Fefferhead_11 Start: 7185, Stop: 7748, Start Num: 28

Candidate Starts for Fefferhead_11:

(Start: 28 @7185 has 22 MA's), (73, 7515), (90, 7722), (91, 7731),

Gene: Feyre_10 Start: 7278, Stop: 7802, Start Num: 38

Candidate Starts for Feyre_10:

(Start: 15 @7173 has 4 MA's), (Start: 20 @7212 has 1 MA's), (Start: 31 @7257 has 3 MA's), (Start: 38 @7278 has 6 MA's), (Start: 41 @7293 has 11 MA's), (46, 7305), (73, 7578),

Gene: Flathead_6 Start: 4408, Stop: 4944, Start Num: 30

Candidate Starts for Flathead_6:

(Start: 30 @4408 has 61 MA's), (63, 4630), (69, 4699), (70, 4708), (79, 4810), (91, 4927),

Gene: Frankie_6 Start: 4602, Stop: 5138, Start Num: 30

Candidate Starts for Frankie_6:

(Start: 30 @4602 has 61 MA's), (63, 4824), (69, 4893), (70, 4902), (79, 5004), (91, 5121),

Gene: Fryberger_38 Start: 13725, Stop: 14291, Start Num: 48

Candidate Starts for Fryberger_38:

(17, 13608), (Start: 48 @13725 has 5 MA's), (57, 13833), (74, 14055), (78, 14115), (87, 14226),

Gene: Ganymede_12 Start: 7333, Stop: 7875, Start Num: 27

Candidate Starts for Ganymede_12:

(Start: 27 @7333 has 104 MA's), (58, 7468), (73, 7636), (88, 7831), (90, 7849), (91, 7858),

Gene: Gengar_10 Start: 7279, Stop: 7908, Start Num: 15

Candidate Starts for Gengar_10:

(Start: 15 @7279 has 4 MA's), (Start: 20 @7318 has 1 MA's), (Start: 31 @7363 has 3 MA's), (Start: 38 @7384 has 6 MA's), (Start: 41 @7399 has 11 MA's), (46, 7411), (73, 7684),

Gene: Geraldini_12 Start: 7339, Stop: 7875, Start Num: 27

Candidate Starts for Geraldini_12:

(Start: 27 @7339 has 104 MA's), (58, 7468), (73, 7636), (88, 7831), (90, 7849), (91, 7858),

Gene: Gerri43_7 Start: 4967, Stop: 5473, Start Num: 38

Candidate Starts for Gerri43_7:

(Start: 38 @4967 has 6 MA's), (62, 5153), (69, 5246),

Gene: Girafales_6 Start: 4403, Stop: 4939, Start Num: 30

Candidate Starts for Girafales_6:

(Start: 30 @4403 has 61 MA's), (69, 4694), (70, 4703), (91, 4922),

Gene: GlobiWarming_5 Start: 5032, Stop: 5529, Start Num: 36

Candidate Starts for GlobiWarming_5:

(10, 4891), (11, 4900), (Start: 36 @5032 has 8 MA's), (84, 5491),

Gene: Guanica15_12 Start: 6279, Stop: 6812, Start Num: 27

Candidate Starts for Guanica15_12:

(24, 6273), (Start: 27 @6279 has 104 MA's), (58, 6408), (73, 6576), (90, 6786), (91, 6795),

Gene: Guey18_43 Start: 14918, Stop: 15484, Start Num: 48

Candidate Starts for Guey18_43:

(17, 14801), (Start: 48 @14918 has 5 MA's), (57, 15026), (74, 15248), (78, 15308), (87, 15419),

Gene: Guillsminger_10 Start: 7293, Stop: 7883, Start Num: 20

Candidate Starts for Guillsminger_10:

(Start: 15 @7254 has 4 MA's), (Start: 20 @7293 has 1 MA's), (Start: 31 @7338 has 3 MA's), (Start: 38 @7359 has 6 MA's), (Start: 41 @7374 has 11 MA's), (46, 7386), (73, 7659),

Gene: Hammy_11 Start: 7195, Stop: 7752, Start Num: 28

Candidate Starts for Hammy_11:

(23, 7177), (Start: 28 @7195 has 22 MA's), (73, 7519), (88, 7708), (91, 7735),

Gene: HedwigODU_12 Start: 7313, Stop: 7855, Start Num: 27

Candidate Starts for HedwigODU_12:

(Start: 27 @7313 has 104 MA's), (58, 7448), (73, 7616), (88, 7811), (90, 7829), (91, 7838),

Gene: Heftyboy_10 Start: 7501, Stop: 8010, Start Num: 41

Candidate Starts for Heftyboy_10:

(Start: 15 @7381 has 4 MA's), (Start: 20 @7420 has 1 MA's), (Start: 31 @7465 has 3 MA's), (Start: 38 @7486 has 6 MA's), (Start: 41 @7501 has 11 MA's), (46, 7513), (73, 7786),

Gene: Hegedechwinu_6 Start: 4408, Stop: 4944, Start Num: 30

Candidate Starts for Hegedechwinu_6:

(Start: 30 @4408 has 61 MA's), (63, 4630), (70, 4708), (79, 4810), (91, 4927),

Gene: Homura_12 Start: 7357, Stop: 7899, Start Num: 27

Candidate Starts for Homura_12:

(Start: 27 @7357 has 104 MA's), (58, 7492), (73, 7660), (88, 7855), (90, 7873), (91, 7882),

Gene: HotPotato_5 Start: 5037, Stop: 5534, Start Num: 36

Candidate Starts for HotPotato_5:

(Start: 36 @5037 has 8 MA's), (66, 5316), (84, 5496),

Gene: Hurricane_11 Start: 7335, Stop: 7883, Start Num: 43

Candidate Starts for Hurricane_11:

(9, 7140), (Start: 32 @7299 has 3 MA's), (Start: 43 @7335 has 6 MA's), (55, 7461), (63, 7545), (73, 7647), (91, 7866),

Gene: Hyperbowlee_12 Start: 7357, Stop: 7899, Start Num: 27

Candidate Starts for Hyperbowlee_12:

(Start: 27 @7357 has 104 MA's), (58, 7492), (73, 7660), (88, 7855), (90, 7873), (91, 7882),

Gene: Illumine_12 Start: 7321, Stop: 7854, Start Num: 27

Candidate Starts for Illumine_12:

(Start: 27 @7321 has 104 MA's), (58, 7447), (73, 7615), (90, 7828), (91, 7837),

Gene: Inky_12 Start: 7357, Stop: 7899, Start Num: 27

Candidate Starts for Inky_12:

(Start: 27 @7357 has 104 MA's), (58, 7492), (73, 7660), (88, 7855), (90, 7873), (91, 7882),

Gene: InvictusManeo_10 Start: 7500, Stop: 8030, Start Num: 41

Candidate Starts for InvictusManeo_10:

(13, 7356), (Start: 15 @7377 has 4 MA's), (Start: 31 @7464 has 3 MA's), (Start: 38 @7485 has 6 MA's), (Start: 41 @7500 has 11 MA's), (46, 7512), (73, 7797),

Gene: JAWS_12 Start: 7310, Stop: 7852, Start Num: 27

Candidate Starts for JAWS_12:

(Start: 27 @7310 has 104 MA's), (58, 7445), (73, 7613), (88, 7808), (90, 7826), (91, 7835),

Gene: Jabbawokkie_7 Start: 4830, Stop: 5378, Start Num: 35

Candidate Starts for Jabbawokkie_7:

(2, 4407), (3, 4539), (5, 4614), (8, 4650), (12, 4713), (Start: 35 @4830 has 8 MA's), (49, 4935), (53, 4959), (67, 5118), (83, 5283),

Gene: JalFarm20_6 Start: 4408, Stop: 4944, Start Num: 30

Candidate Starts for JalFarm20_6:

(Start: 30 @4408 has 61 MA's), (63, 4630), (69, 4699), (70, 4708), (79, 4810), (91, 4927),

Gene: Jarvi_12 Start: 7357, Stop: 7899, Start Num: 27

Candidate Starts for Jarvi_12:

(Start: 27 @7357 has 104 MA's), (58, 7492), (73, 7660), (88, 7855), (90, 7873), (91, 7882),

Gene: Jayhawk_12 Start: 7314, Stop: 7856, Start Num: 28

Candidate Starts for Jayhawk_12:

(7, 7131), (Start: 28 @7314 has 22 MA's), (58, 7449), (73, 7617), (88, 7812), (90, 7830), (91, 7839),

Gene: Jeckyll_12 Start: 7357, Stop: 7899, Start Num: 27

Candidate Starts for Jeckyll_12:

(Start: 27 @7357 has 104 MA's), (58, 7492), (73, 7660), (88, 7855), (90, 7873), (91, 7882),

Gene: Job42_6 Start: 4408, Stop: 4944, Start Num: 30

Candidate Starts for Job42_6:

(Start: 30 @4408 has 61 MA's), (63, 4630), (69, 4699), (70, 4708), (73, 4726), (76, 4786), (79, 4810), (91, 4927),

Gene: Joy99_12 Start: 7289, Stop: 7825, Start Num: 27

Candidate Starts for Joy99_12:

(Start: 27 @7289 has 104 MA's), (58, 7418), (73, 7586), (88, 7781), (90, 7799), (91, 7808),

Gene: Judy_5 Start: 5076, Stop: 5573, Start Num: 36

Candidate Starts for Judy_5:

(Start: 36 @5076 has 8 MA's), (84, 5535),

Gene: Juice456_6 Start: 4409, Stop: 4945, Start Num: 30

Candidate Starts for Juice456_6:

(Start: 30 @4409 has 61 MA's), (63, 4631), (69, 4700), (70, 4709), (79, 4811), (91, 4928),

Gene: KayMoney_5 Start: 5037, Stop: 5531, Start Num: 36

Candidate Starts for KayMoney_5:

(Start: 36 @5037 has 8 MA's), (84, 5493),

Gene: Keelan_36 Start: 13692, Stop: 14267, Start Num: 40

Candidate Starts for Keelan_36:

(Start: 40 @13692 has 3 MA's), (57, 13821), (66, 13965), (72, 14007), (74, 14043), (78, 14103), (81, 14124), (92, 14247), (93, 14253),

Gene: Keshu_11 Start: 7324, Stop: 7872, Start Num: 43

Candidate Starts for Keshu_11:

(Start: 43 @7324 has 6 MA's), (50, 7417), (73, 7636), (91, 7855),

Gene: KiSi_11 Start: 6171, Stop: 6728, Start Num: 27

Candidate Starts for KiSi_11:

(Start: 27 @6171 has 104 MA's), (88, 6684), (90, 6702), (91, 6711),

Gene: Kimberlium_6 Start: 4409, Stop: 4945, Start Num: 30

Candidate Starts for Kimberlium_6:

(Start: 30 @4409 has 61 MA's), (63, 4631), (69, 4700), (70, 4709), (79, 4811), (91, 4928),

Gene: Kingsley_6 Start: 4408, Stop: 4944, Start Num: 30

Candidate Starts for Kingsley_6:

(Start: 30 @4408 has 61 MA's), (63, 4630), (69, 4699), (70, 4708), (79, 4810), (91, 4927),

Gene: Kratio_9 Start: 7091, Stop: 7657, Start Num: 31

Candidate Starts for Kratio_9:

(Start: 31 @7091 has 3 MA's), (Start: 38 @7112 has 6 MA's), (Start: 41 @7127 has 11 MA's), (46, 7139), (73, 7424),

Gene: Larva_10 Start: 7222, Stop: 7788, Start Num: 31

Candidate Starts for Larva_10:

(Start: 31 @7222 has 3 MA's), (Start: 38 @7243 has 6 MA's), (Start: 41 @7258 has 11 MA's), (46, 7270), (73, 7555),

Gene: LastHope_12 Start: 6334, Stop: 6882, Start Num: 26

Candidate Starts for LastHope_12:

(Start: 26 @6334 has 2 MA's), (58, 6484), (73, 6652), (75, 6691), (88, 6838), (90, 6856), (91, 6865),

Gene: LastNadiia_10 Start: 7336, Stop: 7845, Start Num: 38

Candidate Starts for LastNadiia_10:

(Start: 38 @7336 has 6 MA's),

Gene: LaterM_12 Start: 7280, Stop: 7822, Start Num: 27

Candidate Starts for LaterM_12:

(Start: 27 @7280 has 104 MA's), (58, 7415), (73, 7583), (90, 7796), (91, 7805),

Gene: Lavahound_10 Start: 6944, Stop: 7507, Start Num: 28

Candidate Starts for Lavahound_10:

(Start: 28 @6944 has 22 MA's), (73, 7274), (90, 7481), (91, 7490),

Gene: LeMond_11 Start: 6171, Stop: 6728, Start Num: 27

Candidate Starts for LeMond_11:

(Start: 27 @6171 has 104 MA's), (88, 6684), (90, 6702), (91, 6711),

Gene: Lea83_11 Start: 7326, Stop: 7874, Start Num: 43

Candidate Starts for Lea83_11:

(Start: 32 @7290 has 3 MA's), (Start: 43 @7326 has 6 MA's), (68, 7602), (73, 7638), (91, 7857),

Gene: Leozinho_6 Start: 4408, Stop: 4944, Start Num: 30

Candidate Starts for Leozinho_6:

(Start: 30 @4408 has 61 MA's), (63, 4630), (69, 4699), (70, 4708), (79, 4810), (91, 4927),

Gene: Leston_10 Start: 7384, Stop: 8013, Start Num: 15

Candidate Starts for Leston_10:

(Start: 15 @7384 has 4 MA's), (Start: 20 @7423 has 1 MA's), (Start: 31 @7468 has 3 MA's), (Start: 38 @7489 has 6 MA's), (Start: 41 @7504 has 11 MA's), (46, 7516), (73, 7789),

Gene: LilDirt_9 Start: 7257, Stop: 7787, Start Num: 41
Candidate Starts for LilDirt_9:
(Start: 31 @7221 has 3 MA's), (Start: 38 @7242 has 6 MA's), (Start: 41 @7257 has 11 MA's), (46, 7269), (73, 7554),

Gene: LilPharaoh_8 Start: 6589, Stop: 7137, Start Num: 27
Candidate Starts for LilPharaoh_8:
(Start: 27 @6589 has 104 MA's), (73, 6904), (88, 7093), (90, 7111),

Gene: LindNT_12 Start: 7280, Stop: 7822, Start Num: 27
Candidate Starts for LindNT_12:
(Start: 27 @7280 has 104 MA's), (58, 7415), (73, 7583), (88, 7778), (90, 7796), (91, 7805),

Gene: LittleRon_5 Start: 5037, Stop: 5531, Start Num: 36
Candidate Starts for LittleRon_5:
(Start: 36 @5037 has 8 MA's), (84, 5493),

Gene: LittleShirley_6 Start: 4409, Stop: 4945, Start Num: 30
Candidate Starts for LittleShirley_6:
(Start: 30 @4409 has 61 MA's), (63, 4631), (69, 4700), (70, 4709), (79, 4811), (91, 4928),

Gene: Llorens_12 Start: 7357, Stop: 7899, Start Num: 27
Candidate Starts for Llorens_12:
(Start: 27 @7357 has 104 MA's), (58, 7492), (73, 7660), (88, 7855), (90, 7873), (91, 7882),

Gene: LordVader_7 Start: 4404, Stop: 4940, Start Num: 30
Candidate Starts for LordVader_7:
(Start: 30 @4404 has 61 MA's), (59, 4572), (63, 4626), (69, 4695), (70, 4704), (79, 4806), (91, 4923),

Gene: Lorde_6 Start: 4408, Stop: 4944, Start Num: 30
Candidate Starts for Lorde_6:
(Start: 30 @4408 has 61 MA's), (63, 4630), (69, 4699), (70, 4708), (79, 4810), (91, 4927),

Gene: Lucia_6 Start: 4408, Stop: 4944, Start Num: 30
Candidate Starts for Lucia_6:
(Start: 30 @4408 has 61 MA's), (63, 4630), (69, 4699), (70, 4708), (79, 4810), (91, 4927),

Gene: Lunahalos_12 Start: 7357, Stop: 7899, Start Num: 27
Candidate Starts for Lunahalos_12:
(Start: 27 @7357 has 104 MA's), (58, 7492), (73, 7660), (88, 7855), (90, 7873), (91, 7882),

Gene: MacKat_12 Start: 7333, Stop: 7875, Start Num: 27
Candidate Starts for MacKat_12:
(Start: 27 @7333 has 104 MA's), (58, 7468), (73, 7636), (88, 7831), (90, 7849), (91, 7858),

Gene: MacnCheese_12 Start: 7513, Stop: 8091, Start Num: 32
Candidate Starts for MacnCheese_12:
(Start: 32 @7513 has 3 MA's), (Start: 43 @7549 has 6 MA's), (50, 7633), (73, 7852), (91, 8074),

Gene: Madiba_6 Start: 4407, Stop: 4943, Start Num: 30
Candidate Starts for Madiba_6:

(Start: 30 @4407 has 61 MA's), (63, 4629), (69, 4698), (70, 4707), (73, 4725), (76, 4785), (79, 4809), (91, 4926),

Gene: Makima_8 Start: 6454, Stop: 6963, Start Num: 38

Candidate Starts for Makima_8:

(34, 6439), (Start: 38 @6454 has 6 MA's), (73, 6757),

Gene: MarkPhew_11 Start: 6090, Stop: 6629, Start Num: 27

Candidate Starts for MarkPhew_11:

(Start: 27 @6090 has 104 MA's), (65, 6342), (68, 6357), (88, 6585), (90, 6603), (91, 6612),

Gene: Marker_6 Start: 4407, Stop: 4943, Start Num: 30

Candidate Starts for Marker_6:

(Start: 30 @4407 has 61 MA's), (63, 4629), (69, 4698), (70, 4707), (73, 4725), (76, 4785), (79, 4809), (91, 4926),

Gene: Marshawn_13 Start: 6726, Stop: 7280, Start Num: 27

Candidate Starts for Marshawn_13:

(Start: 27 @6726 has 104 MA's), (58, 6876), (68, 7008), (88, 7236), (90, 7254),

Gene: McMater_12 Start: 6370, Stop: 6936, Start Num: 24

Candidate Starts for McMater_12:

(24, 6370), (Start: 27 @6376 has 104 MA's), (58, 6532), (73, 6700), (90, 6910),

Gene: Mdavu_8 Start: 6577, Stop: 7125, Start Num: 27

Candidate Starts for Mdavu_8:

(Start: 27 @6577 has 104 MA's), (73, 6892), (88, 7081), (90, 7099),

Gene: MeaningOfLife_12 Start: 7286, Stop: 7828, Start Num: 27

Candidate Starts for MeaningOfLife_12:

(Start: 27 @7286 has 104 MA's), (58, 7421), (73, 7589), (88, 7784), (90, 7802), (91, 7811),

Gene: Megsy_12 Start: 7283, Stop: 7825, Start Num: 27

Candidate Starts for Megsy_12:

(Start: 27 @7283 has 104 MA's), (58, 7418), (73, 7586), (88, 7781), (90, 7799), (91, 7808),

Gene: Mireles_7 Start: 4860, Stop: 5363, Start Num: 38

Candidate Starts for Mireles_7:

(34, 4845), (Start: 38 @4860 has 6 MA's), (69, 5136), (86, 5331),

Gene: Miryou_10 Start: 7374, Stop: 7883, Start Num: 41

Candidate Starts for Miryou_10:

(Start: 15 @7254 has 4 MA's), (Start: 20 @7293 has 1 MA's), (Start: 31 @7338 has 3 MA's), (Start: 38 @7359 has 6 MA's), (Start: 41 @7374 has 11 MA's), (46, 7386), (73, 7659),

Gene: Misha28_6 Start: 4412, Stop: 4948, Start Num: 30

Candidate Starts for Misha28_6:

(Start: 30 @4412 has 61 MA's), (63, 4634), (69, 4703), (70, 4712), (73, 4730), (79, 4814), (91, 4931),

Gene: Mova_6 Start: 4410, Stop: 4946, Start Num: 30

Candidate Starts for Mova_6:

(Start: 30 @4410 has 61 MA's), (63, 4632), (69, 4701), (70, 4710), (73, 4728), (79, 4812), (91, 4929),

Gene: Mozy_6 Start: 4405, Stop: 4941, Start Num: 30
Candidate Starts for Mozy_6:
(Start: 30 @4405 has 61 MA's), (69, 4696), (70, 4705), (91, 4924),

Gene: MulchExplorer_6 Start: 4409, Stop: 4945, Start Num: 30
Candidate Starts for MulchExplorer_6:
(Start: 30 @4409 has 61 MA's), (63, 4631), (69, 4700), (70, 4709), (79, 4811), (91, 4928),

Gene: Murucutumbu_12 Start: 7273, Stop: 7815, Start Num: 27
Candidate Starts for Murucutumbu_12:
(Start: 27 @7273 has 104 MA's), (58, 7408), (73, 7576), (90, 7789), (91, 7798),

Gene: Mynx_12 Start: 7336, Stop: 7878, Start Num: 27
Candidate Starts for Mynx_12:
(Start: 27 @7336 has 104 MA's), (58, 7471), (73, 7639), (88, 7834), (90, 7852), (91, 7861),

Gene: Neighly_10 Start: 7242, Stop: 7787, Start Num: 38
Candidate Starts for Neighly_10:
(Start: 31 @7221 has 3 MA's), (Start: 38 @7242 has 6 MA's), (Start: 41 @7257 has 11 MA's), (46, 7269), (73, 7554),

Gene: Neuville_7 Start: 4967, Stop: 5473, Start Num: 38
Candidate Starts for Neuville_7:
(Start: 38 @4967 has 6 MA's), (62, 5153), (69, 5246),

Gene: Nibb_11 Start: 6227, Stop: 6772, Start Num: 27
Candidate Starts for Nibb_11:
(Start: 27 @6227 has 104 MA's), (75, 6572), (88, 6728), (90, 6746), (91, 6755),

Gene: NidoQ_5 Start: 5094, Stop: 5591, Start Num: 36
Candidate Starts for NidoQ_5:
(Start: 36 @5094 has 8 MA's), (84, 5553),

Gene: Nikao_8 Start: 6589, Stop: 7137, Start Num: 27
Candidate Starts for Nikao_8:
(Start: 27 @6589 has 104 MA's), (73, 6904), (88, 7093), (90, 7111),

Gene: NikkiHotWheels_5 Start: 5034, Stop: 5531, Start Num: 36
Candidate Starts for NikkiHotWheels_5:
(Start: 36 @5034 has 8 MA's), (84, 5493),

Gene: Niklas_12 Start: 6376, Stop: 6936, Start Num: 27
Candidate Starts for Niklas_12:
(24, 6370), (Start: 27 @6376 has 104 MA's), (58, 6532), (73, 6700), (90, 6910),

Gene: November_10 Start: 7032, Stop: 7598, Start Num: 28
Candidate Starts for November_10:
(Start: 28 @7032 has 22 MA's), (68, 7326), (73, 7362), (90, 7572), (91, 7581),

Gene: Nutello_8 Start: 6589, Stop: 7137, Start Num: 27
Candidate Starts for Nutello_8:
(Start: 27 @6589 has 104 MA's), (73, 6904), (88, 7093), (90, 7111),

Gene: Ogotogo_7 Start: 4568, Stop: 5116, Start Num: 35

Candidate Starts for Ogotogo_7:

(2, 4145), (3, 4277), (5, 4352), (8, 4388), (12, 4451), (Start: 35 @4568 has 8 MA's), (49, 4673), (53, 4697), (67, 4856), (83, 5021),

Gene: OkiRoe_10 Start: 7360, Stop: 7884, Start Num: 38

Candidate Starts for OkiRoe_10:

(Start: 15 @7255 has 4 MA's), (Start: 20 @7294 has 1 MA's), (Start: 31 @7339 has 3 MA's), (Start: 38 @7360 has 6 MA's), (Start: 41 @7375 has 11 MA's), (46, 7387), (73, 7660),

Gene: Oksu_6 Start: 4409, Stop: 4945, Start Num: 30

Candidate Starts for Oksu_6:

(Start: 30 @4409 has 61 MA's), (63, 4631), (69, 4700), (70, 4709), (79, 4811), (91, 4928),

Gene: Omnicron_10 Start: 6242, Stop: 6898, Start Num: 15

Candidate Starts for Omnicron_10:

(Start: 15 @6242 has 4 MA's), (Start: 20 @6281 has 1 MA's), (33, 6329), (Start: 42 @6365 has 1 MA's), (46, 6377), (73, 6665), (90, 6872),

Gene: Oscar_11 Start: 6172, Stop: 6729, Start Num: 27

Candidate Starts for Oscar_11:

(Start: 27 @6172 has 104 MA's), (88, 6685), (90, 6703), (91, 6712),

Gene: OwlsT2W_6 Start: 4408, Stop: 4944, Start Num: 30

Candidate Starts for OwlsT2W_6:

(Start: 30 @4408 has 61 MA's), (63, 4630), (69, 4699), (70, 4708), (79, 4810), (91, 4927),

Gene: Padfoot_12 Start: 7357, Stop: 7899, Start Num: 27

Candidate Starts for Padfoot_12:

(Start: 27 @7357 has 104 MA's), (58, 7492), (73, 7660), (88, 7855), (90, 7873), (91, 7882),

Gene: Padpat_12 Start: 7316, Stop: 7858, Start Num: 27

Candidate Starts for Padpat_12:

(Start: 27 @7316 has 104 MA's), (58, 7451), (73, 7619), (88, 7814), (90, 7832), (91, 7841),

Gene: Paola_10 Start: 7359, Stop: 7883, Start Num: 38

Candidate Starts for Paola_10:

(Start: 15 @7254 has 4 MA's), (Start: 20 @7293 has 1 MA's), (Start: 31 @7338 has 3 MA's), (Start: 38 @7359 has 6 MA's), (Start: 41 @7374 has 11 MA's), (46, 7386), (73, 7659),

Gene: Peanam_12 Start: 6376, Stop: 6936, Start Num: 27

Candidate Starts for Peanam_12:

(24, 6370), (Start: 27 @6376 has 104 MA's), (58, 6532), (73, 6700), (90, 6910),

Gene: Peas_5 Start: 5037, Stop: 5534, Start Num: 36

Candidate Starts for Peas_5:

(Start: 36 @5037 has 8 MA's), (84, 5496),

Gene: Peel_12 Start: 7357, Stop: 7899, Start Num: 27

Candidate Starts for Peel_12:

(Start: 27 @7357 has 104 MA's), (58, 7492), (73, 7660), (88, 7855), (90, 7873), (91, 7882),

Gene: PeggyLeg03_5 Start: 5077, Stop: 5574, Start Num: 36

Candidate Starts for PeggyLeg03_5:
(Start: 36 @5077 has 8 MA's), (84, 5536),

Gene: Peridot_6 Start: 4409, Stop: 4945, Start Num: 30
Candidate Starts for Peridot_6:
(Start: 30 @4409 has 61 MA's), (63, 4631), (69, 4700), (70, 4709), (73, 4727), (79, 4811), (91, 4928),

Gene: Pharb_11 Start: 7169, Stop: 7717, Start Num: 43
Candidate Starts for Pharb_11:
(21, 7088), (22, 7094), (Start: 43 @7169 has 6 MA's), (47, 7184), (73, 7481), (91, 7700),

Gene: PhelpsODU_11 Start: 6278, Stop: 6850, Start Num: 28
Candidate Starts for PhelpsODU_11:
(6, 6080), (19, 6236), (Start: 28 @6278 has 22 MA's), (73, 6617), (75, 6656), (88, 6806), (90, 6824),

Gene: Phrank_11 Start: 6234, Stop: 6800, Start Num: 28
Candidate Starts for Phrank_11:
(Start: 28 @6234 has 22 MA's), (73, 6567), (75, 6606), (91, 6783),

Gene: Piatt_12 Start: 7357, Stop: 7899, Start Num: 27
Candidate Starts for Piatt_12:
(Start: 27 @7357 has 104 MA's), (58, 7492), (73, 7660), (88, 7855), (90, 7873), (91, 7882),

Gene: Piper2020_6 Start: 4411, Stop: 4947, Start Num: 30
Candidate Starts for Piper2020_6:
(Start: 30 @4411 has 61 MA's), (63, 4633), (69, 4702), (70, 4711), (73, 4729), (79, 4813), (91, 4930),

Gene: Pisa1_11 Start: 7079, Stop: 7612, Start Num: 27
Candidate Starts for Pisa1_11:
(Start: 27 @7079 has 104 MA's), (58, 7208), (73, 7376), (90, 7586), (91, 7595),

Gene: Pisa4_11 Start: 7079, Stop: 7612, Start Num: 27
Candidate Starts for Pisa4_11:
(Start: 27 @7079 has 104 MA's), (58, 7208), (73, 7376), (90, 7586), (91, 7595),

Gene: Pixie_11 Start: 7042, Stop: 7626, Start Num: 32
Candidate Starts for Pixie_11:
(Start: 32 @7042 has 3 MA's), (Start: 43 @7078 has 6 MA's), (68, 7354), (73, 7390), (91, 7609),

Gene: Plumbus_6 Start: 4409, Stop: 4945, Start Num: 30
Candidate Starts for Plumbus_6:
(Start: 30 @4409 has 61 MA's), (63, 4631), (69, 4700), (70, 4709), (79, 4811), (91, 4928),

Gene: Pokerus_11 Start: 7270, Stop: 7812, Start Num: 27
Candidate Starts for Pokerus_11:
(Start: 27 @7270 has 104 MA's), (58, 7405), (73, 7573), (88, 7768), (90, 7786), (91, 7795),

Gene: Pollywog_6 Start: 4408, Stop: 4944, Start Num: 30
Candidate Starts for Pollywog_6:
(Start: 30 @4408 has 61 MA's), (63, 4630), (69, 4699), (70, 4708), (73, 4726), (79, 4810), (91, 4927),

Gene: Prithvi_12 Start: 7280, Stop: 7822, Start Num: 27
Candidate Starts for Prithvi_12:

(Start: 27 @7280 has 104 MA's), (58, 7415), (73, 7583), (88, 7778), (90, 7796), (91, 7805),

Gene: Psycho_10 Start: 7388, Stop: 7918, Start Num: 41

Candidate Starts for Psycho_10:

(Start: 31 @7352 has 3 MA's), (Start: 38 @7373 has 6 MA's), (Start: 41 @7388 has 11 MA's), (46, 7400), (73, 7685),

Gene: Pucara_5 Start: 5039, Stop: 5533, Start Num: 36

Candidate Starts for Pucara_5:

(Start: 36 @5039 has 8 MA's), (66, 5318), (84, 5495),

Gene: Quico_6 Start: 4403, Stop: 4939, Start Num: 30

Candidate Starts for Quico_6:

(Start: 30 @4403 has 61 MA's), (69, 4694), (70, 4703), (91, 4922),

Gene: QuincyRose_11 Start: 7333, Stop: 7875, Start Num: 27

Candidate Starts for QuincyRose_11:

(Start: 27 @7333 has 104 MA's), (58, 7468), (73, 7636), (88, 7831), (90, 7849), (91, 7858),

Gene: Ramen_12 Start: 7313, Stop: 7855, Start Num: 27

Candidate Starts for Ramen_12:

(Start: 27 @7313 has 104 MA's), (58, 7448), (73, 7616), (88, 7811), (90, 7829), (91, 7838),

Gene: Ramsey_6 Start: 4408, Stop: 4944, Start Num: 30

Candidate Starts for Ramsey_6:

(Start: 30 @4408 has 61 MA's), (69, 4699), (70, 4708), (79, 4810), (91, 4927),

Gene: Rando14_10 Start: 6393, Stop: 6926, Start Num: 42

Candidate Starts for Rando14_10:

(33, 6357), (Start: 42 @6393 has 1 MA's), (46, 6405), (73, 6693), (76, 6753), (90, 6900),

Gene: Rapunzel97_12 Start: 7314, Stop: 7856, Start Num: 28

Candidate Starts for Rapunzel97_12:

(7, 7131), (Start: 28 @7314 has 22 MA's), (58, 7449), (73, 7617), (88, 7812), (90, 7830), (91, 7839),

Gene: Rialto_6 Start: 4409, Stop: 4945, Start Num: 30

Candidate Starts for Rialto_6:

(Start: 30 @4409 has 61 MA's), (63, 4631), (69, 4700), (70, 4709), (73, 4727), (79, 4811), (91, 4928),

Gene: Richo_12 Start: 6370, Stop: 6936, Start Num: 24

Candidate Starts for Richo_12:

(24, 6370), (Start: 27 @6376 has 104 MA's), (58, 6532), (73, 6700), (90, 6910),

Gene: Roberts_7 Start: 4967, Stop: 5473, Start Num: 38

Candidate Starts for Roberts_7:

(Start: 38 @4967 has 6 MA's), (62, 5153), (69, 5246),

Gene: RockyHorror_6 Start: 4408, Stop: 4944, Start Num: 30

Candidate Starts for RockyHorror_6:

(Start: 30 @4408 has 61 MA's), (63, 4630), (69, 4699), (70, 4708), (79, 4810), (91, 4927),

Gene: Ronaldo_41 Start: 14655, Stop: 15221, Start Num: 48

Candidate Starts for Ronaldo_41:

(17, 14538), (Start: 48 @14655 has 5 MA's), (57, 14763), (74, 14985), (78, 15045), (87, 15156),

Gene: Rosmarinus_12 Start: 7345, Stop: 7887, Start Num: 27

Candidate Starts for Rosmarinus_12:

(Start: 27 @7345 has 104 MA's), (58, 7480), (73, 7648), (88, 7843), (90, 7861), (91, 7870),

Gene: SamuelLPlaqson_12 Start: 7263, Stop: 7805, Start Num: 27

Candidate Starts for SamuelLPlaqson_12:

(Start: 27 @7263 has 104 MA's), (58, 7398), (73, 7566), (88, 7761), (90, 7779), (91, 7788),

Gene: Sarma624_6 Start: 4408, Stop: 4944, Start Num: 30

Candidate Starts for Sarma624_6:

(Start: 30 @4408 has 61 MA's), (63, 4630), (69, 4699), (70, 4708), (79, 4810), (91, 4927),

Gene: Scarlett_11 Start: 6171, Stop: 6728, Start Num: 27

Candidate Starts for Scarlett_11:

(Start: 27 @6171 has 104 MA's), (88, 6684), (90, 6702), (91, 6711),

Gene: Seagreen_6 Start: 4409, Stop: 4945, Start Num: 30

Candidate Starts for Seagreen_6:

(Start: 30 @4409 has 61 MA's), (63, 4631), (69, 4700), (70, 4709), (79, 4811), (91, 4928),

Gene: SgtBeansprout_8 Start: 6589, Stop: 7137, Start Num: 27

Candidate Starts for SgtBeansprout_8:

(Start: 27 @6589 has 104 MA's), (73, 6904), (88, 7093), (90, 7111),

Gene: Shadow1_10 Start: 6145, Stop: 6711, Start Num: 28

Candidate Starts for Shadow1_10:

(Start: 28 @6145 has 22 MA's), (75, 6517), (91, 6694),

Gene: Shaobing_12 Start: 6376, Stop: 6936, Start Num: 27

Candidate Starts for Shaobing_12:

(24, 6370), (Start: 27 @6376 has 104 MA's), (58, 6532), (73, 6700), (90, 6910),

Gene: ShedlockHolmes_11 Start: 7290, Stop: 7874, Start Num: 32

Candidate Starts for ShedlockHolmes_11:

(Start: 32 @7290 has 3 MA's), (Start: 43 @7326 has 6 MA's), (68, 7602), (73, 7638), (91, 7857),

Gene: ShiaSurprise_12 Start: 7357, Stop: 7899, Start Num: 27

Candidate Starts for ShiaSurprise_12:

(Start: 27 @7357 has 104 MA's), (58, 7492), (73, 7660), (88, 7855), (90, 7873), (91, 7882),

Gene: SilverChicken_6 Start: 4307, Stop: 4855, Start Num: 35

Candidate Starts for SilverChicken_6:

(14, 4205), (Start: 35 @4307 has 8 MA's), (49, 4412), (53, 4436), (67, 4595), (83, 4760),

Gene: SimranZ1_6 Start: 4408, Stop: 4944, Start Num: 30

Candidate Starts for SimranZ1_6:

(Start: 30 @4408 has 61 MA's), (63, 4630), (69, 4699), (70, 4708), (79, 4810), (91, 4927),

Gene: SirPhilip_11 Start: 6046, Stop: 6564, Start Num: 44

Candidate Starts for SirPhilip_11:

(Start: 44 @6046 has 1 MA's), (58, 6163), (89, 6529), (90, 6538), (91, 6547),

Gene: Slim_6 Start: 4409, Stop: 4945, Start Num: 30

Candidate Starts for Slim_6:

(Start: 30 @4409 has 61 MA's), (63, 4631), (69, 4700), (70, 4709), (73, 4727), (79, 4811), (91, 4928),

Gene: Slimphazie_12 Start: 7314, Stop: 7856, Start Num: 28

Candidate Starts for Slimphazie_12:

(7, 7131), (Start: 28 @7314 has 22 MA's), (58, 7449), (73, 7617), (88, 7812), (90, 7830), (91, 7839),

Gene: SoSeph_10 Start: 7501, Stop: 8010, Start Num: 41

Candidate Starts for SoSeph_10:

(Start: 15 @7381 has 4 MA's), (Start: 20 @7420 has 1 MA's), (Start: 31 @7465 has 3 MA's), (Start: 38 @7486 has 6 MA's), (Start: 41 @7501 has 11 MA's), (46, 7513), (73, 7786),

Gene: Soul22_6 Start: 4306, Stop: 4854, Start Num: 35

Candidate Starts for Soul22_6:

(2, 3883), (3, 4015), (4, 4039), (5, 4090), (8, 4126), (12, 4189), (Start: 35 @4306 has 8 MA's), (49, 4411), (53, 4435), (67, 4594), (83, 4759),

Gene: Sparky_5 Start: 4760, Stop: 5305, Start Num: 40

Candidate Starts for Sparky_5:

(Start: 40 @4760 has 3 MA's), (54, 4871), (56, 4880), (77, 5129), (80, 5165), (85, 5237),

Gene: Spikelee_6 Start: 4409, Stop: 4945, Start Num: 30

Candidate Starts for Spikelee_6:

(Start: 30 @4409 has 61 MA's), (63, 4631), (69, 4700), (70, 4709), (73, 4727), (79, 4811), (91, 4928),

Gene: Spock_12 Start: 7357, Stop: 7899, Start Num: 27

Candidate Starts for Spock_12:

(Start: 27 @7357 has 104 MA's), (58, 7492), (73, 7660), (88, 7855), (90, 7873), (91, 7882),

Gene: Squirty_6 Start: 4407, Stop: 4943, Start Num: 30

Candidate Starts for Squirty_6:

(Start: 30 @4407 has 61 MA's), (63, 4629), (69, 4698), (70, 4707), (79, 4809), (91, 4926),

Gene: Stap_6 Start: 4408, Stop: 4944, Start Num: 30

Candidate Starts for Stap_6:

(Start: 30 @4408 has 61 MA's), (63, 4630), (69, 4699), (70, 4708), (79, 4810), (91, 4927),

Gene: Starcevich_6 Start: 4409, Stop: 4945, Start Num: 30

Candidate Starts for Starcevich_6:

(Start: 30 @4409 has 61 MA's), (63, 4631), (69, 4700), (70, 4709), (73, 4727), (79, 4811), (91, 4928),

Gene: Stinson_12 Start: 7285, Stop: 7827, Start Num: 27

Candidate Starts for Stinson_12:

(Start: 27 @7285 has 104 MA's), (58, 7420), (73, 7588), (90, 7801), (91, 7810),

Gene: Studio_7 Start: 4771, Stop: 5280, Start Num: 38

Candidate Starts for Studio_7:

(16, 4687), (Start: 38 @4771 has 6 MA's), (52, 4876), (62, 4957),

Gene: Sulley_12 Start: 7292, Stop: 7825, Start Num: 27

Candidate Starts for Sulley_12:

(Start: 27 @7292 has 104 MA's), (58, 7421), (90, 7799), (91, 7808),

Gene: Sunflower1121_10 Start: 6147, Stop: 6722, Start Num: 28

Candidate Starts for Sunflower1121_10:

(Start: 28 @6147 has 22 MA's), (73, 6489), (75, 6528), (91, 6705),

Gene: Syra333_11 Start: 6243, Stop: 6815, Start Num: 28

Candidate Starts for Syra333_11:

(Start: 28 @6243 has 22 MA's), (65, 6531), (73, 6582), (75, 6621), (90, 6789), (91, 6798),

Gene: TBond007_11 Start: 7077, Stop: 7625, Start Num: 43

Candidate Starts for TBond007_11:

(Start: 32 @7041 has 3 MA's), (Start: 43 @7077 has 6 MA's), (68, 7353), (73, 7389), (91, 7608),

Gene: TClif_11 Start: 6257, Stop: 6814, Start Num: 29

Candidate Starts for TClif_11:

(Start: 29 @6257 has 1 MA's), (39, 6290), (73, 6581), (91, 6797),

Gene: TM4_8 Start: 5384, Stop: 5944, Start Num: 25

Candidate Starts for TM4_8:

(Start: 25 @5384 has 1 MA's), (51, 5516), (70, 5702), (73, 5720), (90, 5918),

Gene: TMaxx_7 Start: 4931, Stop: 5440, Start Num: 38

Candidate Starts for TMaxx_7:

(Start: 38 @4931 has 6 MA's), (62, 5117), (64, 5162),

Gene: Tachez_12 Start: 7279, Stop: 7821, Start Num: 27

Candidate Starts for Tachez_12:

(Start: 27 @7279 has 104 MA's), (58, 7414), (73, 7582), (88, 7777), (90, 7795), (91, 7804),

Gene: TaiwanKao_12 Start: 7286, Stop: 7828, Start Num: 27

Candidate Starts for TaiwanKao_12:

(Start: 27 @7286 has 104 MA's), (58, 7421), (73, 7589), (88, 7784), (90, 7802), (91, 7811),

Gene: Tchotchke_6 Start: 4409, Stop: 4945, Start Num: 30

Candidate Starts for Tchotchke_6:

(Start: 30 @4409 has 61 MA's), (63, 4631), (69, 4700), (70, 4709), (79, 4811), (91, 4928),

Gene: Teejan_8 Start: 6589, Stop: 7137, Start Num: 27

Candidate Starts for Teejan_8:

(Start: 27 @6589 has 104 MA's), (73, 6904), (88, 7093), (90, 7111),

Gene: Thyatira_10 Start: 7374, Stop: 7883, Start Num: 41

Candidate Starts for Thyatira_10:

(Start: 15 @7254 has 4 MA's), (Start: 20 @7293 has 1 MA's), (Start: 31 @7338 has 3 MA's), (Start: 38 @7359 has 6 MA's), (Start: 41 @7374 has 11 MA's), (46, 7386), (73, 7659),

Gene: Tierra_11 Start: 6942, Stop: 7514, Start Num: 28

Candidate Starts for Tierra_11:

(6, 6744), (19, 6900), (Start: 28 @6942 has 22 MA's), (73, 7281), (75, 7320), (88, 7470), (90, 7488),

Gene: Tigress9_11 Start: 6224, Stop: 6796, Start Num: 28

Candidate Starts for Tigress9_11:

(18, 6185), (Start: 28 @6224 has 22 MA's), (65, 6512), (73, 6563), (75, 6602), (90, 6770), (91, 6779),

Gene: TingHuaYa_12 Start: 6338, Stop: 6886, Start Num: 26

Candidate Starts for TingHuaYa_12:

(Start: 26 @6338 has 2 MA's), (58, 6488), (73, 6656), (75, 6695), (88, 6842), (90, 6860), (91, 6869),

Gene: TiniBug_12 Start: 7263, Stop: 7805, Start Num: 27

Candidate Starts for TiniBug_12:

(Start: 27 @7263 has 104 MA's), (58, 7398), (73, 7566), (88, 7761), (90, 7779), (91, 7788),

Gene: Tiri_12 Start: 7324, Stop: 7866, Start Num: 27

Candidate Starts for Tiri_12:

(Start: 27 @7324 has 104 MA's), (58, 7459), (73, 7627), (88, 7822), (90, 7840), (91, 7849),

Gene: TootsiePop_6 Start: 4412, Stop: 4948, Start Num: 30

Candidate Starts for TootsiePop_6:

(Start: 30 @4412 has 61 MA's), (63, 4634), (69, 4703), (70, 4712), (73, 4730), (79, 4814), (91, 4931),

Gene: Tootsieroll_6 Start: 4408, Stop: 4944, Start Num: 30

Candidate Starts for Tootsieroll_6:

(Start: 30 @4408 has 61 MA's), (63, 4630), (69, 4699), (70, 4708), (79, 4810), (91, 4927),

Gene: Topper_12 Start: 7357, Stop: 7899, Start Num: 27

Candidate Starts for Topper_12:

(Start: 27 @7357 has 104 MA's), (58, 7492), (73, 7660), (88, 7855), (90, 7873), (91, 7882),

Gene: Torres_8 Start: 6589, Stop: 7137, Start Num: 27

Candidate Starts for Torres_8:

(Start: 27 @6589 has 104 MA's), (73, 6904), (88, 7093), (90, 7111),

Gene: Totinger_6 Start: 4409, Stop: 4945, Start Num: 30

Candidate Starts for Totinger_6:

(Start: 30 @4409 has 61 MA's), (63, 4631), (69, 4700), (70, 4709), (73, 4727), (79, 4811), (91, 4928),

Gene: TreyKay_12 Start: 7280, Stop: 7822, Start Num: 27

Candidate Starts for TreyKay_12:

(Start: 27 @7280 has 104 MA's), (58, 7415), (73, 7583), (88, 7778), (90, 7796), (91, 7805),

Gene: TribbleTrouble_10 Start: 7121, Stop: 7663, Start Num: 43

Candidate Starts for TribbleTrouble_10:

(9, 6923), (Start: 32 @7085 has 3 MA's), (Start: 43 @7121 has 6 MA's), (55, 7238),

Gene: Trice_8 Start: 6589, Stop: 7137, Start Num: 27

Candidate Starts for Trice_8:

(Start: 27 @6589 has 104 MA's), (73, 6904), (88, 7093), (90, 7111),

Gene: TripleC_10 Start: 8397, Stop: 8909, Start Num: 38

Candidate Starts for TripleC_10:

(Start: 38 @8397 has 6 MA's),

Gene: TruffulaTree_12 Start: 7310, Stop: 7852, Start Num: 27

Candidate Starts for TruffulaTree_12:

(Start: 27 @7310 has 104 MA's), (58, 7445), (73, 7613), (88, 7808), (90, 7826), (91, 7835),

Gene: Twitch_12 Start: 7357, Stop: 7899, Start Num: 27

Candidate Starts for Twitch_12:

(Start: 27 @7357 has 104 MA's), (58, 7492), (73, 7660), (88, 7855), (90, 7873), (91, 7882),

Gene: UncleRicky_6 Start: 4408, Stop: 4944, Start Num: 30

Candidate Starts for UncleRicky_6:

(Start: 30 @4408 has 61 MA's), (63, 4630), (69, 4699), (70, 4708), (79, 4810), (91, 4927),

Gene: Unicorn_11 Start: 6278, Stop: 6850, Start Num: 28

Candidate Starts for Unicorn_11:

(6, 6080), (19, 6236), (Start: 28 @6278 has 22 MA's), (73, 6617), (75, 6656), (88, 6806), (90, 6824),

Gene: Urkel_12 Start: 7263, Stop: 7805, Start Num: 27

Candidate Starts for Urkel_12:

(Start: 27 @7263 has 104 MA's), (58, 7398), (73, 7566), (88, 7761), (90, 7779), (91, 7788),

Gene: Validus_12 Start: 6293, Stop: 6850, Start Num: 27

Candidate Starts for Validus_12:

(Start: 27 @6293 has 104 MA's), (58, 6446), (73, 6614), (90, 6824),

Gene: Veliki_12 Start: 7357, Stop: 7899, Start Num: 27

Candidate Starts for Veliki_12:

(Start: 27 @7357 has 104 MA's), (58, 7492), (73, 7660), (88, 7855), (90, 7873), (91, 7882),

Gene: Velveteen_6 Start: 4408, Stop: 4944, Start Num: 30

Candidate Starts for Velveteen_6:

(Start: 30 @4408 has 61 MA's), (63, 4630), (69, 4699), (70, 4708), (79, 4810), (91, 4927),

Gene: ViviJ_9 Start: 7257, Stop: 7787, Start Num: 41

Candidate Starts for ViviJ_9:

(Start: 31 @7221 has 3 MA's), (Start: 38 @7242 has 6 MA's), (Start: 41 @7257 has 11 MA's), (46, 7269), (73, 7554),

Gene: Volt_40 Start: 14655, Stop: 15221, Start Num: 48

Candidate Starts for Volt_40:

(17, 14538), (Start: 48 @14655 has 5 MA's), (57, 14763), (74, 14985), (78, 15045), (87, 15156),

Gene: Waterfoul_10 Start: 7396, Stop: 7905, Start Num: 41

Candidate Starts for Waterfoul_10:

(Start: 15 @7276 has 4 MA's), (Start: 20 @7315 has 1 MA's), (Start: 31 @7360 has 3 MA's), (Start: 38 @7381 has 6 MA's), (Start: 41 @7396 has 11 MA's), (46, 7408), (73, 7681),

Gene: Ximenita_12 Start: 6410, Stop: 6994, Start Num: 28

Candidate Starts for Ximenita_12:

(Start: 28 @6410 has 22 MA's), (63, 6659), (65, 6710), (73, 6761), (75, 6800), (91, 6977),

Gene: Yoshi_6 Start: 4306, Stop: 4854, Start Num: 35

Candidate Starts for Yoshi_6:

(2, 3883), (3, 4015), (5, 4090), (8, 4126), (12, 4189), (Start: 35 @4306 has 8 MA's), (49, 4411), (53, 4435), (67, 4594), (83, 4759),

Gene: YoureAdopted_11 Start: 7286, Stop: 7828, Start Num: 27

Candidate Starts for YoureAdopted_11:

(Start: 27 @7286 has 104 MA's), (58, 7421), (73, 7589), (88, 7784), (90, 7802), (91, 7811),

Gene: Yuna_12 Start: 6421, Stop: 6981, Start Num: 30

Candidate Starts for Yuna_12:

(Start: 30 @6421 has 61 MA's), (75, 6781), (90, 6955), (91, 6964),

Gene: Yunkel11_12 Start: 6279, Stop: 6812, Start Num: 27

Candidate Starts for Yunkel11_12:

(24, 6273), (Start: 27 @6279 has 104 MA's), (58, 6408), (73, 6576), (90, 6786), (91, 6795),

Gene: Zabiza_12 Start: 7313, Stop: 7855, Start Num: 27

Candidate Starts for Zabiza_12:

(Start: 27 @7313 has 104 MA's), (58, 7448), (73, 7616), (88, 7811), (90, 7829), (91, 7838),

Gene: Zapner_7 Start: 4831, Stop: 5379, Start Num: 35

Candidate Starts for Zapner_7:

(2, 4408), (3, 4540), (5, 4615), (8, 4651), (12, 4714), (Start: 35 @4831 has 8 MA's), (49, 4936), (53, 4960), (67, 5119), (83, 5284),

Gene: Zavala_12 Start: 7295, Stop: 7837, Start Num: 27

Candidate Starts for Zavala_12:

(Start: 27 @7295 has 104 MA's), (58, 7430), (73, 7598), (88, 7793), (90, 7811), (91, 7820),

Gene: Ziko_41 Start: 14595, Stop: 15161, Start Num: 48

Candidate Starts for Ziko_41:

(17, 14478), (Start: 48 @14595 has 5 MA's), (57, 14703), (74, 14925), (78, 14985), (87, 15096),