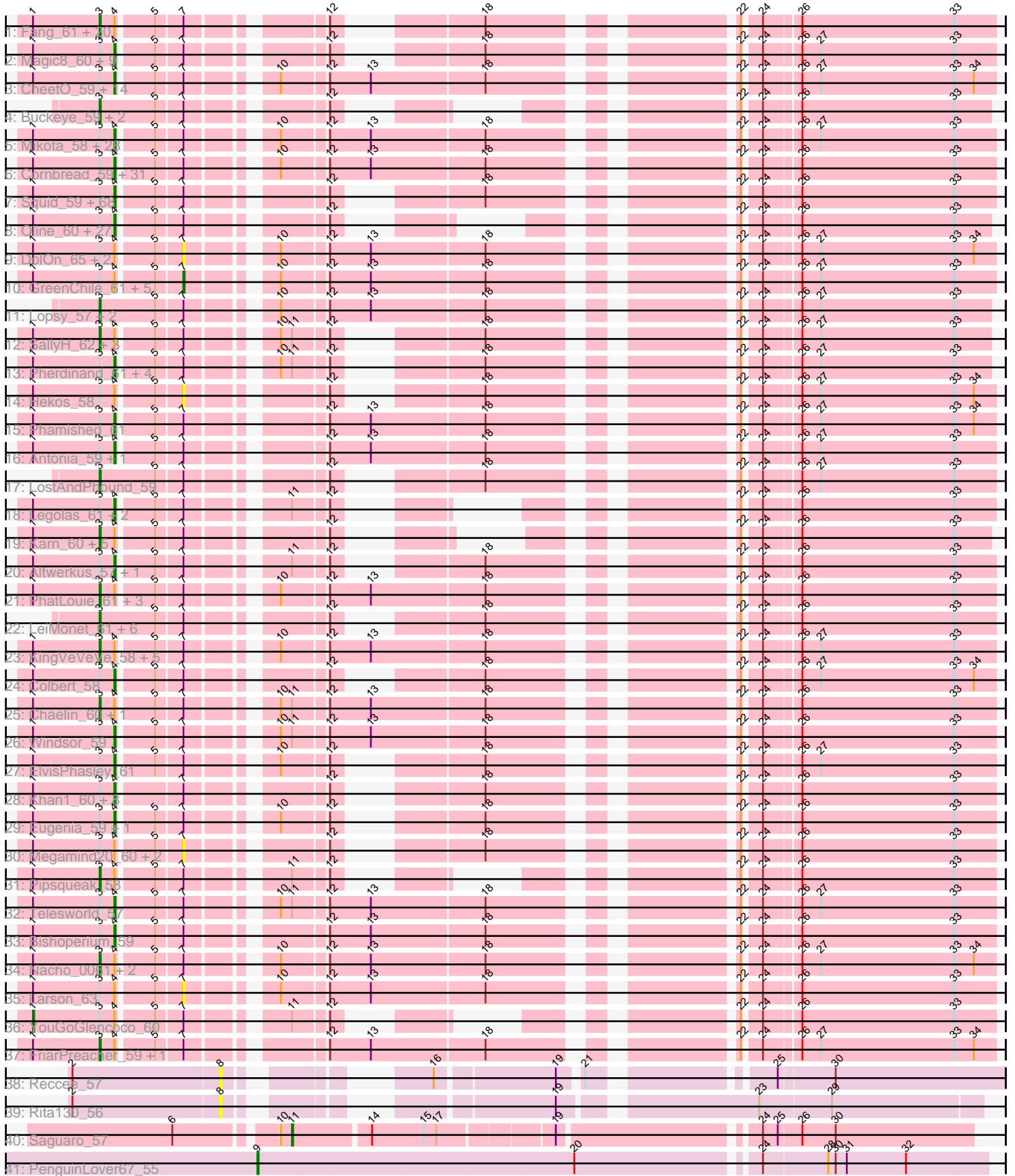


Pham 294379



Note: Tracks are now grouped by subcluster and scaled. Switching in subcluster is indicated by changes in track color. Track scale is now set by default to display the region 30 bp upstream of start 1 to 30 bp downstream of the last possible start. If this default region is judged to be packed too tightly with annotated starts, the track will be further scaled to only show that region of the ORF with annotated starts. This action will be indicated by adding "Zoomed" to the title. For starts, yellow indicates the location of called starts comprised solely of Glimmer/GeneMark auto-annotations, green indicates the location of called starts with at least 1 manual gene annotation.

Pham 294379 Report

This analysis was run 04/18/26 on database version 643.

Pham number 294379 has 294 members, 31 are drafts.

Phages represented in each track:

- Track 1 : Fang_61, Piglet_0059, Durga_62, Aonishiki_61, Serpentine_0059, Quisquilliae_60, Potter_58, SassyCat97_58, PhrodoBaggins_60, Megatron_60, Phipps_59, PG1_60, Katniss_60, Gareth_59, Charles1_60, ABU_60, Harvey_58, IsaacEli_61, PallasAthena_61, DonSanchon_57, Chorkpop_59
- Track 2 : Magic8_60, Apizium_59, Melc17_59, Hetaeria_59, OSmaximus_61, Weher20_59, Dati_59, UAch1_59, Cornobble_59, Fozzie_60
- Track 3 : CheetO_59, Valjean_59, AbsoluteMadLad_60, Eremos_59, Spartan300_59, Daka_62, Boehler_59, Tooj_58, Prickles_61, Chunky_58, Roscoe_60, RedRaider89_60, Numberten_59, Zaider_60, KLucky39_58
- Track 4 : Buckeye_59, Toni_58, Podrick_57
- Track 5 : Mikota_58, Sheila_57, BlueHusk_61, Mag7_60, BatteryCK_60, AngelCake_60, KlimbOn_59, Dingo_58, Doddsville_60, Horchata_58, Basato_60, Gwilliam_60, Etaye_61, RedMaple_61, Crownjwl_59, Schadenfreude_59, Soto_58, MichaelPhcott_60, Carthage_58, DuchessDung_61, SDcharge11_59, Phleuron_60, Pops_59, Kailash_60, OliverWalter_58, Kloppinator_60, Hartsy_60, Newman_58, HSavage_58
- Track 6 : Cornbread_59, DirtJuice_60, Haleema_58, Sigman_60, LuckyMarjie_57, Frankicide_58, AltPhacts_59, Ricotta_59, Lulumae_57, FleetyMac_62, Pacifista_58, MiniBoss_57, JangoPhett_59, True_58, Phunky_58, Freya_57, Chuni_62, BlacksBerry_60, Roy17_58, Lumine_60, Virapocalypse_60, Nicole21_60, Simielle_59, JacAttac_61, Mesh1_61, DoesntMatter_57, Dione_57, Riggan_60, Iridoclysis_60, Phareon_58, Swiphy_61, Plmatters_58
- Track 7 : Squid_59, Zelda_60, Mosaic_58, Thora_59, Daffy_59, Orion_61, Andre_61, Emiris_62, Chipette_60, CampRoach_61, Mulan_59, Lulwa_57, Cher_59, Fringe_63, Inchworm_61, Vortex_59, LeeLot_60, Sophia_58, Mana_58, Kikipoo_61, Kahve_59, DelRivs_58, Usavi_59, Anderson_60, Solosis_58, MitKao_59, Timmi_58, Murdoc_58, LasagnaCat_61, Cosmolli16_60, Vista_59, Serendipity_59, Xavier_58, Held_59, PinheadLarry_60, HenryJackson_59, UncleHowie_58, Skippy_60, Oosterbaan_59, Badfish_60, DaddyDaniels_61, Childish_59, Scoot17C_60, Brilliant_62, TomBombadil_59, Lasso_60, Maru_59, Puhltonio_59, TallGrassMM_59, Giraffe_60, Chah_61, Surely_59, Orwigg_59, Slatt_60, Hertubise_59, PhatCats2014_60, Waterdiva_59, Mcshane_58, ThreeOh3D2_61, JDog_58, Morgushi_59, Soile_60, Morty_60, Grand2040_59, Scrick_60, Burr_59, Hocus_59, Beaglebox_59, Kwadwo_58
- Track 8 : Oline_60, PhrankReynolds_59, Haimas_58, Hamish_58, Phergie_61, MRabcd_59, JakeO_60, Wallhey_60, Jiraiya_60, Plata_60, Labeouficaum_60, TyrionL_60, Jiminy_60, Duggie_60, Thunderbird_59, Trypo_62, Veritas_61,

Derpp_59, Schueller_60, Maskar_61, CharlieGBrown_60, Zonia_61, ImtiyazSitla_61, Gwennie1_59, Struggle_60, MelsMeow_60, Ashraf_61, Caspiboi_60

- Track 9 : DoIOn_65, OneBrain_62, Riverton_59
- Track 10 : GreenChile_61, Roliet_57, Robyn_59, Lehmann_61, Inverness_58, Aleia_62
- Track 11 : Lopsy_57, Adriana_60, Orfeu_57
- Track 12 : SallyH_62, Suffolk_58, BlackStallion_61, Manad_59
- Track 13 : Pherdinand_61, Swish_61, Vivaldi_61, FluffyNinja_61, Yoshand_61
- Track 14 : Hekos_58
- Track 15 : Phamished_61
- Track 16 : Antonia_59, Aelin_59
- Track 17 : LostAndPhound_59
- Track 18 : Legolas_61, LemonSlice_60, Cobra_61
- Track 19 : Karn_60, Kwksand96_60, PhenghisKhan_60, Gophee_61, GeneCoco_60, Pinkman_59
- Track 20 : Altwerkus_57, Jillium_59
- Track 21 : PhatLouie_61, Flake_63, Chute_61, Virgeve_59
- Track 22 : LeiMonet_61, Coletti_61, KingTut_51, Placalicious_59, FugateOSU_59, Matalotodo_58, Happabalu_59
- Track 23 : KingVeVeVe_58, HogWash_61, TooFast2Furious_61, Vaishali24_58, Triad_61, EmpTee_59
- Track 24 : Colbert_58
- Track 25 : Chaelin_60, SirBeauregard_60
- Track 26 : Windsor_59
- Track 27 : ElvisPhasley_61
- Track 28 : Khan1_60, HighStump_61, Mutante_59, Rimu_59, Squiggle_60, Craff_62, Nathan_60, Longacauda_60, MrPhizzler_62
- Track 29 : Eugenia_59, Iridessa_60
- Track 30 : Megamind20_60, BoogieWoogie_60, ShadowBud_60
- Track 31 : Pipsqueak_58
- Track 32 : Telesworld_57
- Track 33 : Bishoperium_59
- Track 34 : Nacho_0061, Gyarad_0058, Olive_59
- Track 35 : Larson_63
- Track 36 : YouGoGlencoco_60
- Track 37 : FriarPreacher_59, SilverBell_60
- Track 38 : Reccee_57
- Track 39 : Rita130_56
- Track 40 : Saguaro_57
- Track 41 : PenguinLover67_55

Summary of Final Annotations (See graph section above for start numbers):

The start number called the most often in the published annotations is 4, it was called in 206 of the 263 non-draft genes in the pham.

Genes that call this "Most Annotated" start:

- AbsoluteMadLad_60, Aelin_59, AltPhacts_59, Altwerkus_57, Anderson_60, Andre_61, AngelCake_60, Antonia_59, Apizium_59, Ashraf_61, Badfish_60, Basato_60, BatteryCK_60, Beaglebox_59, Bishoperium_59, BlacksBerry_60,

BlueHusk_61, Boehler_59, Brilliant_62, Burr_59, CampRoach_61, Carthage_58, Caspiboi_60, Chah_61, CharlieGBrown_60, CheetO_59, Cher_59, Childish_59, Chipette_60, Chuni_62, Chunky_58, Cobra_61, Colbert_58, Cornbread_59, Cornobble_59, Cosmolli16_60, Craff_62, Crownjwl_59, DaddyDaniels_61, Daffy_59, Daka_62, Dati_59, DelRivs_58, Derpp_59, Dingo_58, Dione_57, DirtJuice_60, Doddsville_60, DoesntMatter_57, DuchessDung_61, Duggie_60, ElvisPhasley_61, Emiris_62, Eremos_59, Etaye_61, Eugenia_59, FleetyMac_62, FluffyNinja_61, Fozzie_60, Frankicide_58, Freya_57, Fringe_63, Giraffe_60, Grand2040_59, Gwennie1_59, Gwilliam_60, HSavage_58, Haimas_58, Haleema_58, Hamish_58, Hartsy_60, Held_59, HenryJackson_59, Hertubise_59, Hetaeria_59, HighStump_61, Hocus_59, Horchata_58, ImtiyazSitla_61, Inchworm_61, Iridessa_60, Iridoclysis_60, JDog_58, JacAttac_61, JakeO_60, JangoPhett_59, Jillium_59, Jiminy_60, Jiraiya_60, KLUcky39_58, Kahve_59, Kailash_60, Khan1_60, Kikipoo_61, KlimbOn_59, Kloppinator_60, Kwadwo_58, Labeouficaum_60, LasagnaCat_61, Lasso_60, LeeLot_60, Legolas_61, LemonSlice_60, Longacauda_60, LuckyMarjie_57, Lulumae_57, Lulwa_57, Lumine_60, MRabcd_59, Mag7_60, Magic8_60, Mana_58, Maru_59, Maskar_61, Mcshane_58, Melc17_59, MelsMeow_60, Mesh1_61, MichaelPhcott_60, Mikota_58, MiniBoss_57, MitKao_59, Morgushi_59, Morty_60, Mosaic_58, MrPhizzler_62, Mulan_59, Murdoc_58, Mutante_59, Nathan_60, Newman_58, Nicole21_60, Numberten_59, OSmaximus_61, Oline_60, OliverWalter_58, Oosterbaan_59, Orion_61, Orwigg_59, Pacifista_58, Phamished_61, Phareon_58, PhatCats2014_60, Pherdinand_61, Phergie_61, Phleuron_60, PhrankReynolds_59, Phunky_58, PinheadLarry_60, Plata_60, Plmatters_58, Pops_59, Prickles_61, Puhltonio_59, RedMaple_61, RedRaider89_60, Ricotta_59, Riggan_60, Rimu_59, Roscoe_60, Roy17_58, SDcharge11_59, Schadenfreude_59, Schueller_60, Scoot17C_60, Scrick_60, Serendipity_59, Sheila_57, Sigman_60, Simielle_59, Skippy_60, Slatt_60, Soile_60, Solosis_58, Sophia_58, Soto_58, Spartan300_59, Squid_59, Squiggle_60, Struggle_60, Surely_59, Swiphy_61, Swish_61, TallGrassMM_59, Telesworld_57, Thora_59, ThreeOh3D2_61, Thunderbird_59, Timmi_58, TomBombadil_59, Tooj_58, True_58, Trypo_62, TyrionL_60, UAch1_59, UncleHowie_58, Usavi_59, Valjean_59, Veritas_61, Virapocalypse_60, Vista_59, Vivaldi_61, Vortex_59, Wallhey_60, Waterdiva_59, Weher20_59, Windsor_59, Xavier_58, Yoshand_61, Zaider_60, Zelda_60, Zonia_61,

Genes that have the "Most Annotated" start but do not call it:

- ABU_60, Aleia_62, Aonishiki_61, BlackStallion_61, BoogieWoogie_60, Chaelin_60, Charles1_60, Chorkpop_59, Chute_61, DolOn_65, DonSanchon_57, Durga_62, EmpTee_59, Fang_61, Flake_63, FriarPreacher_59, Gareth_59, GeneCoco_60, Gophee_61, GreenChile_61, Gyarad_0058, Harvey_58, Hekos_58, HogWash_61, Inverness_58, IsaacEli_61, Karn_60, Katniss_60, KingVeVeVe_58, Kwksand96_60, Larson_63, Lehmann_61, Manad_59, Megamind20_60, Megatron_60, Nacho_0061, Olive_59, OneBrain_62, PG1_60, PallasAthena_61, PhatLouie_61, PhenghisKhan_60, Phipps_59, PhrodoBaggins_60, Piglet_0059, Pinkman_59, Pipsqueak_58, Potter_58, Quisquiliae_60, Riverton_59, Robyn_59, Roliet_57, SallyH_62, SassyCat97_58, Serpentine_0059, ShadowBud_60, SilverBell_60, SirBeauregard_60, Suffolk_58, TooFast2Furius_61, Triad_61, Vaishali24_58, Virgeve_59, YouGoGlencoco_60,

Genes that do not have the "Most Annotated" start:

- Adriana_60, Buckeye_59, Coletti_61, FugateOSU_59, Happabalu_59, KingTut_51, LeiMonet_61, Lopsy_57, LostAndPhound_59, Matalotodo_58, Orfeu_57, PenguinLover67_55, Placalicious_59, Podrick_57, Reccee_57, Rita130_56,

Saguaro_57, Toni_58,

Summary by start number:

Start 1:

- Found in 276 of 294 (93.9%) of genes in pham
- Manual Annotations of this start: 1 of 263
- Called 0.4% of time when present
- Phage (with cluster) where this start called: YouGoGlencoco_60 (B1),

Start 3:

- Found in 290 of 294 (98.6%) of genes in pham
- Manual Annotations of this start: 51 of 263
- Called 21.7% of time when present
- Phage (with cluster) where this start called: ABU_60 (B1), Adriana_60 (B1), Aonishiki_61 (B1), BlackStallion_61 (B1), Buckeye_59 (B1), Chaelin_60 (B1), Charles1_60 (B1), Chorkpop_59 (B1), Chute_61 (B1), Coletti_61 (B1), DonSanchon_57 (B1), Durga_62 (B1), EmpTee_59 (B1), Fang_61 (B1), Flake_63 (B1), FriarPreacher_59 (B1), FugateOSU_59 (B1), Gareth_59 (B1), GeneCoco_60 (B1), Gophee_61 (B1), Gyarad_0058 (B1), Happabalu_59 (B1), Harvey_58 (B1), HogWash_61 (B1), IsaacEli_61 (B1), Karn_60 (B1), Katniss_60 (B1), KingTut_51 (B1), KingVeVeVe_58 (B1), Kwksand96_60 (B1), LeiMonet_61 (B1), Lopsy_57 (B1), LostAndPhound_59 (B1), Manad_59 (B1), Matalotodo_58 (B1), Megatron_60 (B1), Nacho_0061 (B1), Olive_59 (B1), Orfeu_57 (B1), PG1_60 (B1), PallasAthena_61 (B1), PhatLouie_61 (B1), PhenghisKhan_60 (B1), Phipps_59 (B1), PhrodoBaggins_60 (B1), Piglet_0059 (B1), Pinkman_59 (B1), Pipsqueak_58 (B1), Placalicious_59 (B1), Podrick_57 (B1), Potter_58 (B1), Quisquilliae_60 (B1), SallyH_62 (B1), SassyCat97_58 (B1), Serpentine_0059 (B1), SilverBell_60 (B1), SirBeauregard_60 (B1), Suffolk_58 (B1), Toni_58 (B1), TooFast2Furius_61 (B1), Triad_61 (B1), Vaishali24_58 (B1), Virgeve_59 (B1),

Start 4:

- Found in 276 of 294 (93.9%) of genes in pham
- Manual Annotations of this start: 206 of 263
- Called 76.8% of time when present
- Phage (with cluster) where this start called: AbsoluteMadLad_60 (B1), Aelin_59 (B1), AltPhacts_59 (B1), Altwerkus_57 (B1), Anderson_60 (B1), Andre_61 (B1), AngelCake_60 (B1), Antonia_59 (B1), Apizium_59 (B1), Ashraf_61 (B1), Badfish_60 (B1), Basato_60 (B1), BatteryCK_60 (B1), Beaglebox_59 (B1), Bishoperium_59 (B1), BlacksBerry_60 (B1), BlueHusk_61 (B1), Boehler_59 (B1), Brilliant_62 (B1), Burr_59 (B1), CampRoach_61 (B1), Carthage_58 (B1), Caspiboi_60 (B1), Chah_61 (B1), CharlieGBrown_60 (B1), CheetO_59 (B1), Cher_59 (B1), Childish_59 (B1), Chipette_60 (B1), Chuni_62 (B1), Chunky_58 (B1), Cobra_61 (B1), Colbert_58 (B1), Cornbread_59 (B1), Cornobble_59 (B1), Cosmolli16_60 (B1), Craff_62 (B1), Crownjwl_59 (B1), DaddyDaniels_61 (B1), Daffy_59 (B1), Daka_62 (B1), Dati_59 (B1), DelRivs_58 (B1), Derpp_59 (B1), Dingo_58 (B1), Dione_57 (B1), DirtJuice_60 (B1), Doddsville_60 (B1), DoesntMatter_57 (B1), DuchessDung_61 (B1), Duggie_60 (B1), ElvisPhasley_61 (B1), Emiris_62 (B1), Eremos_59 (B1), Etaye_61 (B1), Eugenia_59 (B1), FleetyMac_62 (B1), FluffyNinja_61 (B1), Fozzie_60 (B1), Frankicide_58 (B1), Freya_57 (B1), Fringe_63 (B1), Giraffe_60 (B1), Grand2040_59 (B1), Gwennie1_59 (B1), Gwilliam_60 (B1), HSavage_58 (B1), Haimas_58 (B1), Haleema_58 (B1), Hamish_58 (B1), Hartsy_60 (B1), Held_59 (B1), HenryJackson_59 (B1), Hertubise_59 (B1), Hetaeria_59 (B1), HighStump_61 (B1), Hocus_59 (B1),

Horchata_58 (B1), ImtiyazSitla_61 (B1), Inchworm_61 (B1), Iridessa_60 (B1), Iridoclysis_60 (B1), JDog_58 (B1), JacAttac_61 (B1), JakeO_60 (B1), JangoPhett_59 (B1), Jillium_59 (B1), Jiminy_60 (B1), Jiraiya_60 (B1), KLucky39_58 (B1), Kahve_59 (B1), Kailash_60 (B1), Khan1_60 (B1), Kikipoo_61 (B1), KlimbOn_59 (B1), Kloppinator_60 (B1), Kwadwo_58 (B1), Labeouficaum_60 (B1), LasagnaCat_61 (B1), Lasso_60 (B1), LeeLot_60 (B1), Legolas_61 (B1), LemonSlice_60 (B1), Longacauda_60 (B1), LuckyMarjie_57 (B1), Lulumae_57 (B1), Lulwa_57 (B1), Lumine_60 (B1), MRabcd_59 (B1), Mag7_60 (B1), Magic8_60 (B1), Mana_58 (B1), Maru_59 (B1), Maskar_61 (B1), Mcshane_58 (B1), Melc17_59 (B1), MelsMeow_60 (B1), Mesh1_61 (B1), MichaelPhcott_60 (B1), Mikota_58 (B1), MiniBoss_57 (B1), MitKao_59 (B1), Morgushi_59 (B1), Morty_60 (B1), Mosaic_58 (B1), MrPhizzler_62 (B1), Mulan_59 (B1), Murdoc_58 (B1), Mutante_59 (B1), Nathan_60 (B1), Newman_58 (B1), Nicole21_60 (B1), Numberten_59 (B1), OSmaximus_61 (B1), Oline_60 (B1), OliverWalter_58 (B1), Oosterbaan_59 (B1), Orion_61 (B1), Orwigg_59 (B1), Pacifista_58 (B1), Phamished_61 (B1), Phareon_58 (B1), PhatCats2014_60 (B1), Pherdinand_61 (B1), Phergie_61 (B1), Phleuron_60 (B1), PhrankReynolds_59 (B1), Phunky_58 (B1), PinheadLarry_60 (B1), Plata_60 (B1), Plmatters_58 (B1), Pops_59 (B1), Prickles_61 (B1), Puhltonio_59 (B1), RedMaple_61 (B1), RedRaider89_60 (B1), Ricotta_59 (B1), Riggan_60 (B1), Rimu_59 (B1), Roscoe_60 (B1), Roy17_58 (B1), SDcharge11_59 (B1), Schadenfreude_59 (B1), Schueller_60 (B1), Scoot17C_60 (B1), Scrick_60 (B1), Serendipity_59 (B1), Sheila_57 (B1), Sigman_60 (B1), Simielle_59 (B1), Skippy_60 (B1), Slatt_60 (B1), Soile_60 (B1), Solosis_58 (B1), Sophia_58 (B1), Soto_58 (B1), Spartan300_59 (B1), Squid_59 (B1), Squiggle_60 (B1), Struggle_60 (B1), Surely_59 (B1), Swiphy_61 (B1), Swish_61 (B1), TallGrassMM_59 (B1), Telesworld_57 (B1), Thora_59 (B1), ThreeOh3D2_61 (B1), Thunderbird_59 (B1), Timmi_58 (B1), TomBombadil_59 (B1), Tooj_58 (B1), True_58 (B1), Trypo_62 (B1), TyrionL_60 (B1), UAch1_59 (B1), UncleHowie_58 (B1), Usavi_59 (B1), Valjean_59 (B1), Veritas_61 (B1), Virapocalypse_60 (B1), Vista_59 (B1), Vivaldi_61 (B1), Vortex_59 (B1), Wallhey_60 (B1), Waterdiva_59 (B1), Weher20_59 (B1), Windsor_59 (B1), Xavier_58 (B1), Yoshand_61 (B1), Zaider_60 (B1), Zelda_60 (B1), Zonia_61 (B1),

Start 7:

- Found in 290 of 294 (98.6%) of genes in pham
- Manual Annotations of this start: 3 of 263
- Called 4.8% of time when present
- Phage (with cluster) where this start called: Aleia_62 (B1), BoogieWoogie_60 (B1), DoIOn_65 (B1), GreenChile_61 (B1), Hekos_58 (B1), Inverness_58 (B1), Larson_63 (B1), Lehmann_61 (B1), Megamind20_60 (B1), OneBrain_62 (B1), Riverton_59 (B1), Robyn_59 (B1), Roliet_57 (B1), ShadowBud_60 (B1),

Start 8:

- Found in 2 of 294 (0.7%) of genes in pham
- No Manual Annotations of this start.
- Called 100.0% of time when present
- Phage (with cluster) where this start called: Reccee_57 (B5), Rita130_56 (B5),

Start 9:

- Found in 1 of 294 (0.3%) of genes in pham
- Manual Annotations of this start: 1 of 263
- Called 100.0% of time when present
- Phage (with cluster) where this start called: PenguinLover67_55 (B9),

Start 11:

- Found in 21 of 294 (7.1%) of genes in pham
- Manual Annotations of this start: 1 of 263
- Called 4.8% of time when present
- Phage (with cluster) where this start called: Saguaro_57 (B7),

Summary by clusters:

There are 4 clusters represented in this pham: B5, B7, B1, B9,

Info for manual annotations of cluster B1:

- Start number 1 was manually annotated 1 time for cluster B1.
- Start number 3 was manually annotated 51 times for cluster B1.
- Start number 4 was manually annotated 206 times for cluster B1.
- Start number 7 was manually annotated 3 times for cluster B1.

Info for manual annotations of cluster B7:

- Start number 11 was manually annotated 1 time for cluster B7.

Info for manual annotations of cluster B9:

- Start number 9 was manually annotated 1 time for cluster B9.

Gene Information:

Gene: ABU_60 Start: 52688, Stop: 52107, Start Num: 3

Candidate Starts for ABU_60:

(Start: 1 @52742 has 1 MA's), (Start: 3 @52688 has 51 MA's), (Start: 4 @52676 has 206 MA's), (5, 52649), (Start: 7 @52631 has 3 MA's), (12, 52544), (18, 52463), (22, 52301), (24, 52289), (26, 52262), (33, 52139),

Gene: AbsoluteMadLad_60 Start: 52630, Stop: 52019, Start Num: 4

Candidate Starts for AbsoluteMadLad_60:

(Start: 1 @52696 has 1 MA's), (Start: 3 @52642 has 51 MA's), (Start: 4 @52630 has 206 MA's), (5, 52603), (Start: 7 @52585 has 3 MA's), (10, 52531), (12, 52498), (13, 52465), (18, 52375), (22, 52213), (24, 52201), (26, 52174), (27, 52159), (33, 52051), (34, 52036),

Gene: Adriana_60 Start: 52733, Stop: 52104, Start Num: 3

Candidate Starts for Adriana_60:

(Start: 3 @52733 has 51 MA's), (5, 52688), (Start: 7 @52670 has 3 MA's), (10, 52616), (12, 52583), (13, 52550), (18, 52460), (22, 52298), (24, 52286), (26, 52259), (27, 52244), (33, 52136),

Gene: Aelin_59 Start: 52194, Stop: 51583, Start Num: 4

Candidate Starts for Aelin_59:

(Start: 1 @52260 has 1 MA's), (Start: 3 @52206 has 51 MA's), (Start: 4 @52194 has 206 MA's), (5, 52167), (Start: 7 @52149 has 3 MA's), (12, 52062), (13, 52029), (18, 51939), (22, 51777), (24, 51765), (26, 51738), (27, 51723), (33, 51615),

Gene: Aleia_62 Start: 52476, Stop: 51913, Start Num: 7

Candidate Starts for Aleia_62:

(Start: 1 @52587 has 1 MA's), (Start: 3 @52533 has 51 MA's), (Start: 4 @52521 has 206 MA's), (5, 52494), (Start: 7 @52476 has 3 MA's), (10, 52422), (12, 52389), (13, 52356), (18, 52266), (22, 52104), (24, 52092), (26, 52065), (27, 52050), (33, 51942),

Gene: AltPhacts_59 Start: 51743, Stop: 51132, Start Num: 4

Candidate Starts for AltPhacts_59:

(Start: 1 @51809 has 1 MA's), (Start: 3 @51755 has 51 MA's), (Start: 4 @51743 has 206 MA's), (5, 51716), (Start: 7 @51698 has 3 MA's), (10, 51644), (12, 51611), (13, 51578), (18, 51488), (22, 51326), (24, 51314), (26, 51287), (33, 51164),

Gene: Altwerkus_57 Start: 51840, Stop: 51271, Start Num: 4

Candidate Starts for Altwerkus_57:

(Start: 1 @51906 has 1 MA's), (Start: 3 @51852 has 51 MA's), (Start: 4 @51840 has 206 MA's), (5, 51813), (Start: 7 @51795 has 3 MA's), (Start: 11 @51732 has 1 MA's), (12, 51708), (18, 51627), (22, 51465), (24, 51453), (26, 51426), (33, 51303),

Gene: Anderson_60 Start: 52412, Stop: 51843, Start Num: 4

Candidate Starts for Anderson_60:

(Start: 1 @52478 has 1 MA's), (Start: 3 @52424 has 51 MA's), (Start: 4 @52412 has 206 MA's), (5, 52385), (Start: 7 @52367 has 3 MA's), (12, 52280), (18, 52199), (22, 52037), (24, 52025), (26, 51998), (33, 51875),

Gene: Andre_61 Start: 52588, Stop: 52019, Start Num: 4

Candidate Starts for Andre_61:

(Start: 1 @52654 has 1 MA's), (Start: 3 @52600 has 51 MA's), (Start: 4 @52588 has 206 MA's), (5, 52561), (Start: 7 @52543 has 3 MA's), (12, 52456), (18, 52375), (22, 52213), (24, 52201), (26, 52174), (33, 52051),

Gene: AngelCake_60 Start: 52515, Stop: 51904, Start Num: 4

Candidate Starts for AngelCake_60:

(Start: 1 @52581 has 1 MA's), (Start: 3 @52527 has 51 MA's), (Start: 4 @52515 has 206 MA's), (5, 52488), (Start: 7 @52470 has 3 MA's), (10, 52416), (12, 52383), (13, 52350), (18, 52260), (22, 52098), (24, 52086), (26, 52059), (27, 52044), (33, 51936),

Gene: Antonia_59 Start: 52194, Stop: 51583, Start Num: 4

Candidate Starts for Antonia_59:

(Start: 1 @52260 has 1 MA's), (Start: 3 @52206 has 51 MA's), (Start: 4 @52194 has 206 MA's), (5, 52167), (Start: 7 @52149 has 3 MA's), (12, 52062), (13, 52029), (18, 51939), (22, 51777), (24, 51765), (26, 51738), (27, 51723), (33, 51615),

Gene: Aonishiki_61 Start: 52467, Stop: 51886, Start Num: 3

Candidate Starts for Aonishiki_61:

(Start: 1 @52521 has 1 MA's), (Start: 3 @52467 has 51 MA's), (Start: 4 @52455 has 206 MA's), (5, 52428), (Start: 7 @52410 has 3 MA's), (12, 52323), (18, 52242), (22, 52080), (24, 52068), (26, 52041), (33, 51918),

Gene: Apizium_59 Start: 51855, Stop: 51289, Start Num: 4

Candidate Starts for Apizium_59:

(Start: 1 @51921 has 1 MA's), (Start: 3 @51867 has 51 MA's), (Start: 4 @51855 has 206 MA's), (5, 51828), (Start: 7 @51810 has 3 MA's), (12, 51723), (18, 51642), (22, 51480), (24, 51468), (26, 51441), (27, 51426), (33, 51318),

Gene: Ashraf_61 Start: 52401, Stop: 51892, Start Num: 4

Candidate Starts for Ashraf_61:

(Start: 1 @52467 has 1 MA's), (Start: 3 @52413 has 51 MA's), (Start: 4 @52401 has 206 MA's), (5, 52374), (Start: 7 @52356 has 3 MA's), (12, 52269), (22, 52083), (24, 52071), (26, 52044), (33, 51921),

Gene: Badfish_60 Start: 52698, Stop: 52129, Start Num: 4

Candidate Starts for Badfish_60:

(Start: 1 @52764 has 1 MA's), (Start: 3 @52710 has 51 MA's), (Start: 4 @52698 has 206 MA's), (5, 52671), (Start: 7 @52653 has 3 MA's), (12, 52566), (18, 52485), (22, 52323), (24, 52311), (26, 52284), (33, 52161),

Gene: Basato_60 Start: 52461, Stop: 51850, Start Num: 4

Candidate Starts for Basato_60:

(Start: 1 @52527 has 1 MA's), (Start: 3 @52473 has 51 MA's), (Start: 4 @52461 has 206 MA's), (5, 52434), (Start: 7 @52416 has 3 MA's), (10, 52362), (12, 52329), (13, 52296), (18, 52206), (22, 52044), (24, 52032), (26, 52005), (27, 51990), (33, 51882),

Gene: BatteryCK_60 Start: 52337, Stop: 51729, Start Num: 4

Candidate Starts for BatteryCK_60:

(Start: 1 @52403 has 1 MA's), (Start: 3 @52349 has 51 MA's), (Start: 4 @52337 has 206 MA's), (5, 52310), (Start: 7 @52292 has 3 MA's), (10, 52238), (12, 52205), (13, 52172), (18, 52082), (22, 51920), (24, 51908), (26, 51881), (27, 51866), (33, 51758),

Gene: Beaglebox_59 Start: 52251, Stop: 51682, Start Num: 4

Candidate Starts for Beaglebox_59:

(Start: 1 @52317 has 1 MA's), (Start: 3 @52263 has 51 MA's), (Start: 4 @52251 has 206 MA's), (5, 52224), (Start: 7 @52206 has 3 MA's), (12, 52119), (18, 52038), (22, 51876), (24, 51864), (26, 51837), (33, 51714),

Gene: Bishoperium_59 Start: 52726, Stop: 52115, Start Num: 4

Candidate Starts for Bishoperium_59:

(Start: 1 @52792 has 1 MA's), (Start: 3 @52738 has 51 MA's), (Start: 4 @52726 has 206 MA's), (5, 52699), (Start: 7 @52681 has 3 MA's), (12, 52594), (13, 52561), (18, 52471), (22, 52309), (24, 52297), (26, 52270), (33, 52147),

Gene: BlackStallion_61 Start: 52467, Stop: 51889, Start Num: 3

Candidate Starts for BlackStallion_61:

(Start: 1 @52521 has 1 MA's), (Start: 3 @52467 has 51 MA's), (Start: 4 @52455 has 206 MA's), (5, 52428), (Start: 7 @52410 has 3 MA's), (10, 52356), (Start: 11 @52347 has 1 MA's), (12, 52323), (18, 52242), (22, 52080), (24, 52068), (26, 52041), (27, 52026), (33, 51918),

Gene: BlacksBerry_60 Start: 52086, Stop: 51475, Start Num: 4

Candidate Starts for BlacksBerry_60:

(Start: 1 @52152 has 1 MA's), (Start: 3 @52098 has 51 MA's), (Start: 4 @52086 has 206 MA's), (5, 52059), (Start: 7 @52041 has 3 MA's), (10, 51987), (12, 51954), (13, 51921), (18, 51831), (22, 51669), (24, 51657), (26, 51630), (33, 51507),

Gene: BlueHusk_61 Start: 52210, Stop: 51599, Start Num: 4

Candidate Starts for BlueHusk_61:

(Start: 1 @52276 has 1 MA's), (Start: 3 @52222 has 51 MA's), (Start: 4 @52210 has 206 MA's), (5, 52183), (Start: 7 @52165 has 3 MA's), (10, 52111), (12, 52078), (13, 52045), (18, 51955), (22, 51793), (24, 51781), (26, 51754), (27, 51739), (33, 51631),

Gene: Boehler_59 Start: 52373, Stop: 51762, Start Num: 4

Candidate Starts for Boehler_59:

(Start: 1 @52439 has 1 MA's), (Start: 3 @52385 has 51 MA's), (Start: 4 @52373 has 206 MA's), (5, 52346), (Start: 7 @52328 has 3 MA's), (10, 52274), (12, 52241), (13, 52208), (18, 52118), (22, 51956), (24, 51944), (26, 51917), (27, 51902), (33, 51794), (34, 51779),

Gene: BoogieWoogie_60 Start: 52117, Stop: 51593, Start Num: 7

Candidate Starts for BoogieWoogie_60:

(Start: 1 @52228 has 1 MA's), (Start: 3 @52174 has 51 MA's), (Start: 4 @52162 has 206 MA's), (5, 52135), (Start: 7 @52117 has 3 MA's), (12, 52030), (18, 51949), (22, 51787), (24, 51775), (26, 51748), (33, 51625),

Gene: Brilliant_62 Start: 52688, Stop: 52119, Start Num: 4

Candidate Starts for Brilliant_62:

(Start: 1 @52754 has 1 MA's), (Start: 3 @52700 has 51 MA's), (Start: 4 @52688 has 206 MA's), (5, 52661), (Start: 7 @52643 has 3 MA's), (12, 52556), (18, 52475), (22, 52313), (24, 52301), (26, 52274), (33, 52151),

Gene: Buckeye_59 Start: 52463, Stop: 51936, Start Num: 3

Candidate Starts for Buckeye_59:

(Start: 3 @52463 has 51 MA's), (5, 52418), (Start: 7 @52400 has 3 MA's), (12, 52313), (22, 52127), (24, 52115), (26, 52088), (33, 51965),

Gene: Burr_59 Start: 52162, Stop: 51593, Start Num: 4

Candidate Starts for Burr_59:

(Start: 1 @52228 has 1 MA's), (Start: 3 @52174 has 51 MA's), (Start: 4 @52162 has 206 MA's), (5, 52135), (Start: 7 @52117 has 3 MA's), (12, 52030), (18, 51949), (22, 51787), (24, 51775), (26, 51748), (33, 51625),

Gene: CampRoach_61 Start: 52592, Stop: 52023, Start Num: 4

Candidate Starts for CampRoach_61:

(Start: 1 @52658 has 1 MA's), (Start: 3 @52604 has 51 MA's), (Start: 4 @52592 has 206 MA's), (5, 52565), (Start: 7 @52547 has 3 MA's), (12, 52460), (18, 52379), (22, 52217), (24, 52205), (26, 52178), (33, 52055),

Gene: Carthage_58 Start: 51673, Stop: 51065, Start Num: 4

Candidate Starts for Carthage_58:

(Start: 1 @51739 has 1 MA's), (Start: 3 @51685 has 51 MA's), (Start: 4 @51673 has 206 MA's), (5, 51646), (Start: 7 @51628 has 3 MA's), (10, 51574), (12, 51541), (13, 51508), (18, 51418), (22, 51256), (24, 51244), (26, 51217), (27, 51202), (33, 51094),

Gene: Caspiboi_60 Start: 52414, Stop: 51905, Start Num: 4

Candidate Starts for Caspiboi_60:

(Start: 1 @52480 has 1 MA's), (Start: 3 @52426 has 51 MA's), (Start: 4 @52414 has 206 MA's), (5, 52387), (Start: 7 @52369 has 3 MA's), (12, 52282), (22, 52096), (24, 52084), (26, 52057), (33, 51934),

Gene: Chaelin_60 Start: 52736, Stop: 52113, Start Num: 3

Candidate Starts for Chaelin_60:

(Start: 1 @52790 has 1 MA's), (Start: 3 @52736 has 51 MA's), (Start: 4 @52724 has 206 MA's), (5, 52697), (Start: 7 @52679 has 3 MA's), (10, 52625), (Start: 11 @52616 has 1 MA's), (12, 52592), (13, 52559), (18, 52469), (22, 52307), (24, 52295), (26, 52268), (33, 52145),

Gene: Chah_61 Start: 52139, Stop: 51570, Start Num: 4

Candidate Starts for Chah_61:

(Start: 1 @52205 has 1 MA's), (Start: 3 @52151 has 51 MA's), (Start: 4 @52139 has 206 MA's), (5, 52112), (Start: 7 @52094 has 3 MA's), (12, 52007), (18, 51926), (22, 51764), (24, 51752), (26, 51725), (33, 51602),

Gene: Charles1_60 Start: 52460, Stop: 51879, Start Num: 3

Candidate Starts for Charles1_60:

(Start: 1 @52514 has 1 MA's), (Start: 3 @52460 has 51 MA's), (Start: 4 @52448 has 206 MA's), (5, 52421), (Start: 7 @52403 has 3 MA's), (12, 52316), (18, 52235), (22, 52073), (24, 52061), (26, 52034), (33, 51911),

Gene: CharlieGBrown_60 Start: 52287, Stop: 51778, Start Num: 4

Candidate Starts for CharlieGBrown_60:

(Start: 1 @52353 has 1 MA's), (Start: 3 @52299 has 51 MA's), (Start: 4 @52287 has 206 MA's), (5, 52260), (Start: 7 @52242 has 3 MA's), (12, 52155), (22, 51969), (24, 51957), (26, 51930), (33, 51807),

Gene: CheetO_59 Start: 52410, Stop: 51799, Start Num: 4

Candidate Starts for CheetO_59:

(Start: 1 @52476 has 1 MA's), (Start: 3 @52422 has 51 MA's), (Start: 4 @52410 has 206 MA's), (5, 52383), (Start: 7 @52365 has 3 MA's), (10, 52311), (12, 52278), (13, 52245), (18, 52155), (22, 51993), (24, 51981), (26, 51954), (27, 51939), (33, 51831), (34, 51816),

Gene: Cher_59 Start: 52704, Stop: 52135, Start Num: 4

Candidate Starts for Cher_59:

(Start: 1 @52770 has 1 MA's), (Start: 3 @52716 has 51 MA's), (Start: 4 @52704 has 206 MA's), (5, 52677), (Start: 7 @52659 has 3 MA's), (12, 52572), (18, 52491), (22, 52329), (24, 52317), (26, 52290), (33, 52167),

Gene: Childish_59 Start: 52715, Stop: 52149, Start Num: 4

Candidate Starts for Childish_59:

(Start: 1 @52781 has 1 MA's), (Start: 3 @52727 has 51 MA's), (Start: 4 @52715 has 206 MA's), (5, 52688), (Start: 7 @52670 has 3 MA's), (12, 52583), (18, 52502), (22, 52340), (24, 52328), (26, 52301), (33, 52178),

Gene: Chipette_60 Start: 52399, Stop: 51830, Start Num: 4

Candidate Starts for Chipette_60:

(Start: 1 @52465 has 1 MA's), (Start: 3 @52411 has 51 MA's), (Start: 4 @52399 has 206 MA's), (5, 52372), (Start: 7 @52354 has 3 MA's), (12, 52267), (18, 52186), (22, 52024), (24, 52012), (26, 51985), (33, 51862),

Gene: Chorkpop_59 Start: 52203, Stop: 51622, Start Num: 3

Candidate Starts for Chorkpop_59:

(Start: 1 @52257 has 1 MA's), (Start: 3 @52203 has 51 MA's), (Start: 4 @52191 has 206 MA's), (5, 52164), (Start: 7 @52146 has 3 MA's), (12, 52059), (18, 51978), (22, 51816), (24, 51804), (26, 51777), (33, 51654),

Gene: Chuni_62 Start: 52951, Stop: 52340, Start Num: 4

Candidate Starts for Chuni_62:

(Start: 1 @53017 has 1 MA's), (Start: 3 @52963 has 51 MA's), (Start: 4 @52951 has 206 MA's), (5, 52924), (Start: 7 @52906 has 3 MA's), (10, 52852), (12, 52819), (13, 52786), (18, 52696), (22, 52534), (24, 52522), (26, 52495), (33, 52372),

Gene: Chunky_58 Start: 51740, Stop: 51129, Start Num: 4

Candidate Starts for Chunky_58:

(Start: 1 @51806 has 1 MA's), (Start: 3 @51752 has 51 MA's), (Start: 4 @51740 has 206 MA's), (5, 51713), (Start: 7 @51695 has 3 MA's), (10, 51641), (12, 51608), (13, 51575), (18, 51485), (22, 51323), (24, 51311), (26, 51284), (27, 51269), (33, 51161), (34, 51146),

Gene: Chute_61 Start: 52764, Stop: 52141, Start Num: 3

Candidate Starts for Chute_61:

(Start: 1 @52818 has 1 MA's), (Start: 3 @52764 has 51 MA's), (Start: 4 @52752 has 206 MA's), (5, 52725), (Start: 7 @52707 has 3 MA's), (10, 52653), (12, 52620), (13, 52587), (18, 52497), (22, 52335), (24, 52323), (26, 52296), (33, 52173),

Gene: Cobra_61 Start: 52730, Stop: 52221, Start Num: 4

Candidate Starts for Cobra_61:

(Start: 1 @52796 has 1 MA's), (Start: 3 @52742 has 51 MA's), (Start: 4 @52730 has 206 MA's), (5, 52703), (Start: 7 @52685 has 3 MA's), (Start: 11 @52622 has 1 MA's), (12, 52598), (22, 52412), (24, 52400), (26, 52373), (33, 52250),

Gene: Colbert_58 Start: 51750, Stop: 51181, Start Num: 4

Candidate Starts for Colbert_58:

(Start: 1 @51816 has 1 MA's), (Start: 3 @51762 has 51 MA's), (Start: 4 @51750 has 206 MA's), (5, 51723), (Start: 7 @51705 has 3 MA's), (12, 51618), (18, 51537), (22, 51375), (24, 51363), (26, 51336), (27, 51321), (33, 51213), (34, 51198),

Gene: Coletti_61 Start: 52728, Stop: 52141, Start Num: 3

Candidate Starts for Coletti_61:

(Start: 3 @52728 has 51 MA's), (5, 52683), (Start: 7 @52665 has 3 MA's), (12, 52578), (18, 52497), (22, 52335), (24, 52323), (26, 52296), (33, 52173),

Gene: Cornbread_59 Start: 52216, Stop: 51605, Start Num: 4

Candidate Starts for Cornbread_59:

(Start: 1 @52282 has 1 MA's), (Start: 3 @52228 has 51 MA's), (Start: 4 @52216 has 206 MA's), (5, 52189), (Start: 7 @52171 has 3 MA's), (10, 52117), (12, 52084), (13, 52051), (18, 51961), (22, 51799), (24, 51787), (26, 51760), (33, 51637),

Gene: Cornobble_59 Start: 52184, Stop: 51618, Start Num: 4

Candidate Starts for Cornobble_59:

(Start: 1 @52250 has 1 MA's), (Start: 3 @52196 has 51 MA's), (Start: 4 @52184 has 206 MA's), (5, 52157), (Start: 7 @52139 has 3 MA's), (12, 52052), (18, 51971), (22, 51809), (24, 51797), (26, 51770), (27, 51755), (33, 51647),

Gene: Cosmolli16_60 Start: 52894, Stop: 52325, Start Num: 4

Candidate Starts for Cosmolli16_60:

(Start: 1 @52960 has 1 MA's), (Start: 3 @52906 has 51 MA's), (Start: 4 @52894 has 206 MA's), (5, 52867), (Start: 7 @52849 has 3 MA's), (12, 52762), (18, 52681), (22, 52519), (24, 52507), (26, 52480), (33, 52357),

Gene: Craff_62 Start: 53139, Stop: 52570, Start Num: 4

Candidate Starts for Craff_62:

(Start: 1 @53205 has 1 MA's), (Start: 3 @53151 has 51 MA's), (Start: 4 @53139 has 206 MA's), (Start: 7 @53094 has 3 MA's), (12, 53007), (18, 52926), (22, 52764), (24, 52752), (26, 52725), (33, 52602),

Gene: Crownjwl_59 Start: 52213, Stop: 51602, Start Num: 4

Candidate Starts for Crownjwl_59:

(Start: 1 @52279 has 1 MA's), (Start: 3 @52225 has 51 MA's), (Start: 4 @52213 has 206 MA's), (5, 52186), (Start: 7 @52168 has 3 MA's), (10, 52114), (12, 52081), (13, 52048), (18, 51958), (22, 51796), (24, 51784), (26, 51757), (27, 51742), (33, 51634),

Gene: DaddyDaniels_61 Start: 52672, Stop: 52103, Start Num: 4

Candidate Starts for DaddyDaniels_61:

(Start: 1 @52738 has 1 MA's), (Start: 3 @52684 has 51 MA's), (Start: 4 @52672 has 206 MA's), (5, 52645), (Start: 7 @52627 has 3 MA's), (12, 52540), (18, 52459), (22, 52297), (24, 52285), (26, 52258), (33, 52135),

Gene: Daffy_59 Start: 52177, Stop: 51608, Start Num: 4

Candidate Starts for Daffy_59:

(Start: 1 @52243 has 1 MA's), (Start: 3 @52189 has 51 MA's), (Start: 4 @52177 has 206 MA's), (5, 52150), (Start: 7 @52132 has 3 MA's), (12, 52045), (18, 51964), (22, 51802), (24, 51790), (26, 51763), (33, 51640),

Gene: Daka_62 Start: 52693, Stop: 52082, Start Num: 4

Candidate Starts for Daka_62:

(Start: 1 @52759 has 1 MA's), (Start: 3 @52705 has 51 MA's), (Start: 4 @52693 has 206 MA's), (5, 52666), (Start: 7 @52648 has 3 MA's), (10, 52594), (12, 52561), (13, 52528), (18, 52438), (22, 52276), (24, 52264), (26, 52237), (27, 52222), (33, 52114), (34, 52099),

Gene: Dati_59 Start: 52708, Stop: 52139, Start Num: 4

Candidate Starts for Dati_59:

(Start: 1 @52774 has 1 MA's), (Start: 3 @52720 has 51 MA's), (Start: 4 @52708 has 206 MA's), (5, 52681), (Start: 7 @52663 has 3 MA's), (12, 52576), (18, 52495), (22, 52333), (24, 52321), (26, 52294), (27, 52279), (33, 52171),

Gene: DelRivs_58 Start: 52155, Stop: 51586, Start Num: 4

Candidate Starts for DelRivs_58:

(Start: 1 @52221 has 1 MA's), (Start: 3 @52167 has 51 MA's), (Start: 4 @52155 has 206 MA's), (5, 52128), (Start: 7 @52110 has 3 MA's), (12, 52023), (18, 51942), (22, 51780), (24, 51768), (26, 51741), (33, 51618),

Gene: Derpp_59 Start: 52275, Stop: 51766, Start Num: 4

Candidate Starts for Derpp_59:

(Start: 1 @52341 has 1 MA's), (Start: 3 @52287 has 51 MA's), (Start: 4 @52275 has 206 MA's), (5, 52248), (Start: 7 @52230 has 3 MA's), (12, 52143), (22, 51957), (24, 51945), (26, 51918), (33, 51795),

Gene: Dingo_58 Start: 51719, Stop: 51108, Start Num: 4

Candidate Starts for Dingo_58:

(Start: 1 @51785 has 1 MA's), (Start: 3 @51731 has 51 MA's), (Start: 4 @51719 has 206 MA's), (5, 51692), (Start: 7 @51674 has 3 MA's), (10, 51620), (12, 51587), (13, 51554), (18, 51464), (22, 51302), (24, 51290), (26, 51263), (27, 51248), (33, 51140),

Gene: Dione_57 Start: 51891, Stop: 51280, Start Num: 4

Candidate Starts for Dione_57:

(Start: 1 @51957 has 1 MA's), (Start: 3 @51903 has 51 MA's), (Start: 4 @51891 has 206 MA's), (5, 51864), (Start: 7 @51846 has 3 MA's), (10, 51792), (12, 51759), (13, 51726), (18, 51636), (22, 51474), (24, 51462), (26, 51435), (33, 51312),

Gene: DirtJuice_60 Start: 52481, Stop: 51870, Start Num: 4

Candidate Starts for DirtJuice_60:

(Start: 1 @52547 has 1 MA's), (Start: 3 @52493 has 51 MA's), (Start: 4 @52481 has 206 MA's), (5, 52454), (Start: 7 @52436 has 3 MA's), (10, 52382), (12, 52349), (13, 52316), (18, 52226), (22, 52064), (24, 52052), (26, 52025), (33, 51902),

Gene: Doddsville_60 Start: 52427, Stop: 51819, Start Num: 4

Candidate Starts for Doddsville_60:

(Start: 1 @52493 has 1 MA's), (Start: 3 @52439 has 51 MA's), (Start: 4 @52427 has 206 MA's), (5, 52400), (Start: 7 @52382 has 3 MA's), (10, 52328), (12, 52295), (13, 52262), (18, 52172), (22, 52010), (24, 51998), (26, 51971), (27, 51956), (33, 51848),

Gene: DoesntMatter_57 Start: 52184, Stop: 51573, Start Num: 4

Candidate Starts for DoesntMatter_57:

(Start: 1 @52250 has 1 MA's), (Start: 3 @52196 has 51 MA's), (Start: 4 @52184 has 206 MA's), (5, 52157), (Start: 7 @52139 has 3 MA's), (10, 52085), (12, 52052), (13, 52019), (18, 51929), (22, 51767), (24, 51755), (26, 51728), (33, 51605),

Gene: DoIOn_65 Start: 53594, Stop: 53028, Start Num: 7

Candidate Starts for DoIOn_65:

(Start: 1 @53705 has 1 MA's), (Start: 3 @53651 has 51 MA's), (Start: 4 @53639 has 206 MA's), (5, 53612), (Start: 7 @53594 has 3 MA's), (10, 53540), (12, 53507), (13, 53474), (18, 53384), (22, 53222), (24, 53210), (26, 53183), (27, 53168), (33, 53060), (34, 53045),

Gene: DonSanchon_57 Start: 51886, Stop: 51305, Start Num: 3

Candidate Starts for DonSanchon_57:

(Start: 1 @51940 has 1 MA's), (Start: 3 @51886 has 51 MA's), (Start: 4 @51874 has 206 MA's), (5, 51847), (Start: 7 @51829 has 3 MA's), (12, 51742), (18, 51661), (22, 51499), (24, 51487), (26, 51460), (33, 51337),

Gene: DuchessDung_61 Start: 51944, Stop: 51336, Start Num: 4

Candidate Starts for DuchessDung_61:

(Start: 1 @52010 has 1 MA's), (Start: 3 @51956 has 51 MA's), (Start: 4 @51944 has 206 MA's), (5, 51917), (Start: 7 @51899 has 3 MA's), (10, 51845), (12, 51812), (13, 51779), (18, 51689), (22, 51527), (24, 51515), (26, 51488), (27, 51473), (33, 51365),

Gene: Duggie_60 Start: 52428, Stop: 51919, Start Num: 4

Candidate Starts for Duggie_60:

(Start: 1 @52494 has 1 MA's), (Start: 3 @52440 has 51 MA's), (Start: 4 @52428 has 206 MA's), (5, 52401), (Start: 7 @52383 has 3 MA's), (12, 52296), (22, 52110), (24, 52098), (26, 52071), (33, 51948),

Gene: Durga_62 Start: 52936, Stop: 52358, Start Num: 3

Candidate Starts for Durga_62:

(Start: 1 @52990 has 1 MA's), (Start: 3 @52936 has 51 MA's), (Start: 4 @52924 has 206 MA's), (5, 52897), (Start: 7 @52879 has 3 MA's), (12, 52792), (18, 52711), (22, 52549), (24, 52537), (26, 52510), (33, 52387),

Gene: ElvisPhasley_61 Start: 52920, Stop: 52351, Start Num: 4

Candidate Starts for ElvisPhasley_61:

(Start: 1 @52986 has 1 MA's), (Start: 3 @52932 has 51 MA's), (Start: 4 @52920 has 206 MA's), (5, 52893), (Start: 7 @52875 has 3 MA's), (10, 52821), (12, 52788), (18, 52707), (22, 52545), (24, 52533), (26, 52506), (27, 52491), (33, 52383),

Gene: Emiris_62 Start: 52891, Stop: 52322, Start Num: 4

Candidate Starts for Emiris_62:

(Start: 1 @52957 has 1 MA's), (Start: 3 @52903 has 51 MA's), (Start: 4 @52891 has 206 MA's), (5, 52864), (Start: 7 @52846 has 3 MA's), (12, 52759), (18, 52678), (22, 52516), (24, 52504), (26, 52477), (33, 52354),

Gene: EmpTee_59 Start: 52412, Stop: 51792, Start Num: 3

Candidate Starts for EmpTee_59:

(Start: 1 @52466 has 1 MA's), (Start: 3 @52412 has 51 MA's), (Start: 4 @52400 has 206 MA's), (5, 52373), (Start: 7 @52355 has 3 MA's), (10, 52301), (12, 52268), (13, 52235), (18, 52145), (22, 51983), (24, 51971), (26, 51944), (27, 51929), (33, 51821),

Gene: Eremos_59 Start: 52390, Stop: 51779, Start Num: 4

Candidate Starts for Eremos_59:

(Start: 1 @52456 has 1 MA's), (Start: 3 @52402 has 51 MA's), (Start: 4 @52390 has 206 MA's), (5, 52363), (Start: 7 @52345 has 3 MA's), (10, 52291), (12, 52258), (13, 52225), (18, 52135), (22, 51973), (24, 51961), (26, 51934), (27, 51919), (33, 51811), (34, 51796),

Gene: Etaye_61 Start: 53221, Stop: 52613, Start Num: 4

Candidate Starts for Etaye_61:

(Start: 1 @53287 has 1 MA's), (Start: 3 @53233 has 51 MA's), (Start: 4 @53221 has 206 MA's), (5, 53194), (Start: 7 @53176 has 3 MA's), (10, 53122), (12, 53089), (13, 53056), (18, 52966), (22, 52804), (24, 52792), (26, 52765), (27, 52750), (33, 52642),

Gene: Eugenia_59 Start: 52543, Stop: 51974, Start Num: 4

Candidate Starts for Eugenia_59:

(Start: 1 @52609 has 1 MA's), (Start: 3 @52555 has 51 MA's), (Start: 4 @52543 has 206 MA's), (5, 52516), (Start: 7 @52498 has 3 MA's), (10, 52444), (12, 52411), (18, 52330), (22, 52168), (24, 52156), (26, 52129), (33, 52006),

Gene: Fang_61 Start: 52448, Stop: 51867, Start Num: 3

Candidate Starts for Fang_61:

(Start: 1 @52502 has 1 MA's), (Start: 3 @52448 has 51 MA's), (Start: 4 @52436 has 206 MA's), (5, 52409), (Start: 7 @52391 has 3 MA's), (12, 52304), (18, 52223), (22, 52061), (24, 52049), (26, 52022), (33, 51899),

Gene: Flake_63 Start: 52444, Stop: 51821, Start Num: 3

Candidate Starts for Flake_63:

(Start: 1 @52498 has 1 MA's), (Start: 3 @52444 has 51 MA's), (Start: 4 @52432 has 206 MA's), (5, 52405), (Start: 7 @52387 has 3 MA's), (10, 52333), (12, 52300), (13, 52267), (18, 52177), (22, 52015), (24, 52003), (26, 51976), (33, 51853),

Gene: FleetyMac_62 Start: 52374, Stop: 51763, Start Num: 4

Candidate Starts for FleetyMac_62:

(Start: 1 @52440 has 1 MA's), (Start: 3 @52386 has 51 MA's), (Start: 4 @52374 has 206 MA's), (5, 52347), (Start: 7 @52329 has 3 MA's), (10, 52275), (12, 52242), (13, 52209), (18, 52119), (22, 51957), (24, 51945), (26, 51918), (33, 51795),

Gene: FluffyNinja_61 Start: 52456, Stop: 51890, Start Num: 4

Candidate Starts for FluffyNinja_61:

(Start: 1 @52522 has 1 MA's), (Start: 3 @52468 has 51 MA's), (Start: 4 @52456 has 206 MA's), (5, 52429), (Start: 7 @52411 has 3 MA's), (10, 52357), (Start: 11 @52348 has 1 MA's), (12, 52324), (18, 52243), (22, 52081), (24, 52069), (26, 52042), (27, 52027), (33, 51919),

Gene: Fozzie_60 Start: 52681, Stop: 52112, Start Num: 4

Candidate Starts for Fozzie_60:

(Start: 1 @52747 has 1 MA's), (Start: 3 @52693 has 51 MA's), (Start: 4 @52681 has 206 MA's), (5, 52654), (Start: 7 @52636 has 3 MA's), (12, 52549), (18, 52468), (22, 52306), (24, 52294), (26, 52267), (27, 52252), (33, 52144),

Gene: Frankicide_58 Start: 52221, Stop: 51610, Start Num: 4

Candidate Starts for Frankicide_58:

(Start: 1 @52287 has 1 MA's), (Start: 3 @52233 has 51 MA's), (Start: 4 @52221 has 206 MA's), (5, 52194), (Start: 7 @52176 has 3 MA's), (10, 52122), (12, 52089), (13, 52056), (18, 51966), (22, 51804), (24, 51792), (26, 51765), (33, 51642),

Gene: Freya_57 Start: 51882, Stop: 51271, Start Num: 4

Candidate Starts for Freya_57:

(Start: 1 @51948 has 1 MA's), (Start: 3 @51894 has 51 MA's), (Start: 4 @51882 has 206 MA's), (5, 51855), (Start: 7 @51837 has 3 MA's), (10, 51783), (12, 51750), (13, 51717), (18, 51627), (22, 51465), (24, 51453), (26, 51426), (33, 51303),

Gene: FriarPreacher_59 Start: 52280, Stop: 51657, Start Num: 3

Candidate Starts for FriarPreacher_59:

(Start: 1 @52334 has 1 MA's), (Start: 3 @52280 has 51 MA's), (Start: 4 @52268 has 206 MA's), (5, 52241), (Start: 7 @52223 has 3 MA's), (12, 52136), (13, 52103), (18, 52013), (22, 51851), (24, 51839), (26, 51812), (27, 51797), (33, 51689), (34, 51674),

Gene: Fringe_63 Start: 53058, Stop: 52489, Start Num: 4

Candidate Starts for Fringe_63:

(Start: 1 @53124 has 1 MA's), (Start: 3 @53070 has 51 MA's), (Start: 4 @53058 has 206 MA's), (5, 53031), (Start: 7 @53013 has 3 MA's), (12, 52926), (18, 52845), (22, 52683), (24, 52671), (26, 52644), (33, 52521),

Gene: FugateOSU_59 Start: 52703, Stop: 52116, Start Num: 3

Candidate Starts for FugateOSU_59:

(Start: 3 @52703 has 51 MA's), (5, 52658), (Start: 7 @52640 has 3 MA's), (12, 52553), (18, 52472), (22, 52310), (24, 52298), (26, 52271), (33, 52148),

Gene: Gareth_59 Start: 52692, Stop: 52111, Start Num: 3

Candidate Starts for Gareth_59:

(Start: 1 @52746 has 1 MA's), (Start: 3 @52692 has 51 MA's), (Start: 4 @52680 has 206 MA's), (5, 52653), (Start: 7 @52635 has 3 MA's), (12, 52548), (18, 52467), (22, 52305), (24, 52293), (26, 52266), (33, 52143),

Gene: GeneCoco_60 Start: 52735, Stop: 52214, Start Num: 3

Candidate Starts for GeneCoco_60:

(Start: 1 @52789 has 1 MA's), (Start: 3 @52735 has 51 MA's), (Start: 4 @52723 has 206 MA's), (5, 52696), (Start: 7 @52678 has 3 MA's), (12, 52591), (22, 52405), (24, 52393), (26, 52366), (33, 52243),

Gene: Giraffe_60 Start: 52675, Stop: 52106, Start Num: 4

Candidate Starts for Giraffe_60:

(Start: 1 @52741 has 1 MA's), (Start: 3 @52687 has 51 MA's), (Start: 4 @52675 has 206 MA's), (5, 52648), (Start: 7 @52630 has 3 MA's), (12, 52543), (18, 52462), (22, 52300), (24, 52288), (26, 52261), (33, 52138),

Gene: Gophee_61 Start: 52678, Stop: 52157, Start Num: 3

Candidate Starts for Gophee_61:

(Start: 1 @52732 has 1 MA's), (Start: 3 @52678 has 51 MA's), (Start: 4 @52666 has 206 MA's), (5, 52639), (Start: 7 @52621 has 3 MA's), (12, 52534), (22, 52348), (24, 52336), (26, 52309), (33, 52186),

Gene: Grand2040_59 Start: 52669, Stop: 52100, Start Num: 4

Candidate Starts for Grand2040_59:

(Start: 1 @52735 has 1 MA's), (Start: 3 @52681 has 51 MA's), (Start: 4 @52669 has 206 MA's), (5, 52642), (Start: 7 @52624 has 3 MA's), (12, 52537), (18, 52456), (22, 52294), (24, 52282), (26, 52255), (33, 52132),

Gene: GreenChile_61 Start: 52158, Stop: 51592, Start Num: 7

Candidate Starts for GreenChile_61:

(Start: 1 @52269 has 1 MA's), (Start: 3 @52215 has 51 MA's), (Start: 4 @52203 has 206 MA's), (5, 52176), (Start: 7 @52158 has 3 MA's), (10, 52104), (12, 52071), (13, 52038), (18, 51948), (22, 51786), (24, 51774), (26, 51747), (27, 51732), (33, 51624),

Gene: Gwennie1_59 Start: 52468, Stop: 51956, Start Num: 4

Candidate Starts for Gwennie1_59:

(Start: 1 @52534 has 1 MA's), (Start: 3 @52480 has 51 MA's), (Start: 4 @52468 has 206 MA's), (5, 52441), (Start: 7 @52423 has 3 MA's), (12, 52336), (22, 52150), (24, 52138), (26, 52111), (33, 51988),

Gene: Gwilliam_60 Start: 53074, Stop: 52463, Start Num: 4

Candidate Starts for Gwilliam_60:

(Start: 1 @53140 has 1 MA's), (Start: 3 @53086 has 51 MA's), (Start: 4 @53074 has 206 MA's), (5, 53047), (Start: 7 @53029 has 3 MA's), (10, 52975), (12, 52942), (13, 52909), (18, 52819), (22, 52657), (24, 52645), (26, 52618), (27, 52603), (33, 52495),

Gene: Gyarad_0058 Start: 51768, Stop: 51145, Start Num: 3

Candidate Starts for Gyarad_0058:

(Start: 1 @51822 has 1 MA's), (Start: 3 @51768 has 51 MA's), (Start: 4 @51756 has 206 MA's), (5, 51729), (Start: 7 @51711 has 3 MA's), (10, 51657), (12, 51624), (13, 51591), (18, 51501), (22, 51339), (24, 51327), (26, 51300), (27, 51285), (33, 51177), (34, 51162),

Gene: HSavage_58 Start: 52200, Stop: 51589, Start Num: 4

Candidate Starts for HSavage_58:

(Start: 1 @52266 has 1 MA's), (Start: 3 @52212 has 51 MA's), (Start: 4 @52200 has 206 MA's), (5, 52173), (Start: 7 @52155 has 3 MA's), (10, 52101), (12, 52068), (13, 52035), (18, 51945), (22, 51783), (24, 51771), (26, 51744), (27, 51729), (33, 51621),

Gene: Haimas_58 Start: 52117, Stop: 51605, Start Num: 4

Candidate Starts for Haimas_58:

(Start: 1 @52183 has 1 MA's), (Start: 3 @52129 has 51 MA's), (Start: 4 @52117 has 206 MA's), (5, 52090), (Start: 7 @52072 has 3 MA's), (12, 51985), (22, 51799), (24, 51787), (26, 51760), (33, 51637),

Gene: Haleema_58 Start: 52215, Stop: 51604, Start Num: 4

Candidate Starts for Haleema_58:

(Start: 1 @52281 has 1 MA's), (Start: 3 @52227 has 51 MA's), (Start: 4 @52215 has 206 MA's), (5, 52188), (Start: 7 @52170 has 3 MA's), (10, 52116), (12, 52083), (13, 52050), (18, 51960), (22, 51798), (24, 51786), (26, 51759), (33, 51636),

Gene: Hamish_58 Start: 52111, Stop: 51599, Start Num: 4

Candidate Starts for Hamish_58:

(Start: 1 @52177 has 1 MA's), (Start: 3 @52123 has 51 MA's), (Start: 4 @52111 has 206 MA's), (5, 52084), (Start: 7 @52066 has 3 MA's), (12, 51979), (22, 51793), (24, 51781), (26, 51754), (33, 51631),

Gene: Happabalu_59 Start: 52727, Stop: 52140, Start Num: 3

Candidate Starts for Happabalu_59:

(Start: 3 @52727 has 51 MA's), (5, 52682), (Start: 7 @52664 has 3 MA's), (12, 52577), (18, 52496), (22, 52334), (24, 52322), (26, 52295), (33, 52172),

Gene: Hartsy_60 Start: 52549, Stop: 51938, Start Num: 4

Candidate Starts for Hartsy_60:

(Start: 1 @52615 has 1 MA's), (Start: 3 @52561 has 51 MA's), (Start: 4 @52549 has 206 MA's), (5, 52522), (Start: 7 @52504 has 3 MA's), (10, 52450), (12, 52417), (13, 52384), (18, 52294), (22, 52132), (24, 52120), (26, 52093), (27, 52078), (33, 51970),

Gene: Harvey_58 Start: 52216, Stop: 51635, Start Num: 3

Candidate Starts for Harvey_58:

(Start: 1 @52270 has 1 MA's), (Start: 3 @52216 has 51 MA's), (Start: 4 @52204 has 206 MA's), (5, 52177), (Start: 7 @52159 has 3 MA's), (12, 52072), (18, 51991), (22, 51829), (24, 51817), (26, 51790), (33, 51667),

Gene: Hekos_58 Start: 51701, Stop: 51177, Start Num: 7

Candidate Starts for Hekos_58:

(Start: 1 @51812 has 1 MA's), (Start: 3 @51758 has 51 MA's), (Start: 4 @51746 has 206 MA's), (5, 51719), (Start: 7 @51701 has 3 MA's), (12, 51614), (18, 51533), (22, 51371), (24, 51359), (26, 51332), (27, 51317), (33, 51209), (34, 51194),

Gene: Held_59 Start: 52178, Stop: 51609, Start Num: 4

Candidate Starts for Held_59:

(Start: 1 @52244 has 1 MA's), (Start: 3 @52190 has 51 MA's), (Start: 4 @52178 has 206 MA's), (5, 52151), (Start: 7 @52133 has 3 MA's), (12, 52046), (18, 51965), (22, 51803), (24, 51791), (26, 51764), (33, 51641),

Gene: HenryJackson_59 Start: 52704, Stop: 52138, Start Num: 4

Candidate Starts for HenryJackson_59:

(Start: 1 @52770 has 1 MA's), (Start: 3 @52716 has 51 MA's), (Start: 4 @52704 has 206 MA's), (5, 52677), (Start: 7 @52659 has 3 MA's), (12, 52572), (18, 52491), (22, 52329), (24, 52317), (26, 52290), (33, 52167),

Gene: Hertubise_59 Start: 52470, Stop: 51901, Start Num: 4

Candidate Starts for Hertubise_59:

(Start: 1 @52536 has 1 MA's), (Start: 3 @52482 has 51 MA's), (Start: 4 @52470 has 206 MA's), (5, 52443), (Start: 7 @52425 has 3 MA's), (12, 52338), (18, 52257), (22, 52095), (24, 52083), (26, 52056), (33, 51933),

Gene: Hetaeria_59 Start: 52409, Stop: 51843, Start Num: 4

Candidate Starts for Hetaeria_59:

(Start: 1 @52475 has 1 MA's), (Start: 3 @52421 has 51 MA's), (Start: 4 @52409 has 206 MA's), (5, 52382), (Start: 7 @52364 has 3 MA's), (12, 52277), (18, 52196), (22, 52034), (24, 52022), (26, 51995), (27, 51980), (33, 51872),

Gene: HighStump_61 Start: 52681, Stop: 52112, Start Num: 4

Candidate Starts for HighStump_61:

(Start: 1 @52747 has 1 MA's), (Start: 3 @52693 has 51 MA's), (Start: 4 @52681 has 206 MA's), (Start: 7 @52636 has 3 MA's), (12, 52549), (18, 52468), (22, 52306), (24, 52294), (26, 52267), (33, 52144),

Gene: Hocus_59 Start: 52165, Stop: 51596, Start Num: 4

Candidate Starts for Hocus_59:

(Start: 1 @52231 has 1 MA's), (Start: 3 @52177 has 51 MA's), (Start: 4 @52165 has 206 MA's), (5, 52138), (Start: 7 @52120 has 3 MA's), (12, 52033), (18, 51952), (22, 51790), (24, 51778), (26, 51751), (33, 51628),

Gene: HogWash_61 Start: 53255, Stop: 52635, Start Num: 3

Candidate Starts for HogWash_61:

(Start: 1 @53309 has 1 MA's), (Start: 3 @53255 has 51 MA's), (Start: 4 @53243 has 206 MA's), (5, 53216), (Start: 7 @53198 has 3 MA's), (10, 53144), (12, 53111), (13, 53078), (18, 52988), (22, 52826), (24, 52814), (26, 52787), (27, 52772), (33, 52664),

Gene: Horchata_58 Start: 52200, Stop: 51589, Start Num: 4

Candidate Starts for Horchata_58:

(Start: 1 @52266 has 1 MA's), (Start: 3 @52212 has 51 MA's), (Start: 4 @52200 has 206 MA's), (5, 52173), (Start: 7 @52155 has 3 MA's), (10, 52101), (12, 52068), (13, 52035), (18, 51945), (22, 51783), (24, 51771), (26, 51744), (27, 51729), (33, 51621),

Gene: ImtiyazSitla_61 Start: 52401, Stop: 51892, Start Num: 4

Candidate Starts for ImtiyazSitla_61:

(Start: 1 @52467 has 1 MA's), (Start: 3 @52413 has 51 MA's), (Start: 4 @52401 has 206 MA's), (5, 52374), (Start: 7 @52356 has 3 MA's), (12, 52269), (22, 52083), (24, 52071), (26, 52044), (33, 51921),

Gene: Inchworm_61 Start: 52552, Stop: 51983, Start Num: 4

Candidate Starts for Inchworm_61:

(Start: 1 @52618 has 1 MA's), (Start: 3 @52564 has 51 MA's), (Start: 4 @52552 has 206 MA's), (5, 52525), (Start: 7 @52507 has 3 MA's), (12, 52420), (18, 52339), (22, 52177), (24, 52165), (26, 52138), (33, 52015),

Gene: Inverness_58 Start: 52163, Stop: 51597, Start Num: 7

Candidate Starts for Inverness_58:

(Start: 1 @52274 has 1 MA's), (Start: 3 @52220 has 51 MA's), (Start: 4 @52208 has 206 MA's), (5, 52181), (Start: 7 @52163 has 3 MA's), (10, 52109), (12, 52076), (13, 52043), (18, 51953), (22, 51791), (24, 51779), (26, 51752), (27, 51737), (33, 51629),

Gene: Iridessa_60 Start: 52125, Stop: 51556, Start Num: 4

Candidate Starts for Iridessa_60:

(Start: 1 @52191 has 1 MA's), (Start: 3 @52137 has 51 MA's), (Start: 4 @52125 has 206 MA's), (5, 52098), (Start: 7 @52080 has 3 MA's), (10, 52026), (12, 51993), (18, 51912), (22, 51750), (24, 51738), (26, 51711), (33, 51588),

Gene: Iridoclysis_60 Start: 52492, Stop: 51881, Start Num: 4

Candidate Starts for Iridoclysis_60:

(Start: 1 @52558 has 1 MA's), (Start: 3 @52504 has 51 MA's), (Start: 4 @52492 has 206 MA's), (5, 52465), (Start: 7 @52447 has 3 MA's), (10, 52393), (12, 52360), (13, 52327), (18, 52237), (22, 52075), (24, 52063), (26, 52036), (33, 51913),

Gene: IsaacEli_61 Start: 52703, Stop: 52122, Start Num: 3

Candidate Starts for IsaacEli_61:

(Start: 1 @52757 has 1 MA's), (Start: 3 @52703 has 51 MA's), (Start: 4 @52691 has 206 MA's), (5, 52664), (Start: 7 @52646 has 3 MA's), (12, 52559), (18, 52478), (22, 52316), (24, 52304), (26, 52277), (33, 52154),

Gene: JDog_58 Start: 52707, Stop: 52138, Start Num: 4

Candidate Starts for JDog_58:

(Start: 1 @52773 has 1 MA's), (Start: 3 @52719 has 51 MA's), (Start: 4 @52707 has 206 MA's), (5, 52680), (Start: 7 @52662 has 3 MA's), (12, 52575), (18, 52494), (22, 52332), (24, 52320), (26, 52293), (33, 52170),

Gene: JacAttac_61 Start: 52154, Stop: 51543, Start Num: 4

Candidate Starts for JacAttac_61:

(Start: 1 @52220 has 1 MA's), (Start: 3 @52166 has 51 MA's), (Start: 4 @52154 has 206 MA's), (5, 52127), (Start: 7 @52109 has 3 MA's), (10, 52055), (12, 52022), (13, 51989), (18, 51899), (22, 51737), (24, 51725), (26, 51698), (33, 51575),

Gene: JakeO_60 Start: 52430, Stop: 51921, Start Num: 4

Candidate Starts for JakeO_60:

(Start: 1 @52496 has 1 MA's), (Start: 3 @52442 has 51 MA's), (Start: 4 @52430 has 206 MA's), (5, 52403), (Start: 7 @52385 has 3 MA's), (12, 52298), (22, 52112), (24, 52100), (26, 52073), (33, 51950),

Gene: JangoPhett_59 Start: 52495, Stop: 51884, Start Num: 4

Candidate Starts for JangoPhett_59:

(Start: 1 @52561 has 1 MA's), (Start: 3 @52507 has 51 MA's), (Start: 4 @52495 has 206 MA's), (5, 52468), (Start: 7 @52450 has 3 MA's), (10, 52396), (12, 52363), (13, 52330), (18, 52240), (22, 52078), (24, 52066), (26, 52039), (33, 51916),

Gene: Jillium_59 Start: 52699, Stop: 52130, Start Num: 4

Candidate Starts for Jillium_59:

(Start: 1 @52765 has 1 MA's), (Start: 3 @52711 has 51 MA's), (Start: 4 @52699 has 206 MA's), (5, 52672), (Start: 7 @52654 has 3 MA's), (Start: 11 @52591 has 1 MA's), (12, 52567), (18, 52486), (22, 52324), (24, 52312), (26, 52285), (33, 52162),

Gene: Jiminy_60 Start: 52266, Stop: 51757, Start Num: 4

Candidate Starts for Jiminy_60:

(Start: 1 @52332 has 1 MA's), (Start: 3 @52278 has 51 MA's), (Start: 4 @52266 has 206 MA's), (5, 52239), (Start: 7 @52221 has 3 MA's), (12, 52134), (22, 51948), (24, 51936), (26, 51909), (33, 51786),

Gene: Jiraiya_60 Start: 52464, Stop: 51955, Start Num: 4

Candidate Starts for Jiraiya_60:

(Start: 1 @52530 has 1 MA's), (Start: 3 @52476 has 51 MA's), (Start: 4 @52464 has 206 MA's), (5, 52437), (Start: 7 @52419 has 3 MA's), (12, 52332), (22, 52146), (24, 52134), (26, 52107), (33, 51984),

Gene: KLucky39_58 Start: 51755, Stop: 51144, Start Num: 4

Candidate Starts for KLucky39_58:

(Start: 1 @51821 has 1 MA's), (Start: 3 @51767 has 51 MA's), (Start: 4 @51755 has 206 MA's), (5, 51728), (Start: 7 @51710 has 3 MA's), (10, 51656), (12, 51623), (13, 51590), (18, 51500), (22, 51338), (24, 51326), (26, 51299), (27, 51284), (33, 51176), (34, 51161),

Gene: Kahve_59 Start: 52701, Stop: 52135, Start Num: 4

Candidate Starts for Kahve_59:

(Start: 1 @52767 has 1 MA's), (Start: 3 @52713 has 51 MA's), (Start: 4 @52701 has 206 MA's), (5, 52674), (Start: 7 @52656 has 3 MA's), (12, 52569), (18, 52488), (22, 52326), (24, 52314), (26, 52287), (33, 52164),

Gene: Kailash_60 Start: 52781, Stop: 52173, Start Num: 4

Candidate Starts for Kailash_60:

(Start: 1 @52847 has 1 MA's), (Start: 3 @52793 has 51 MA's), (Start: 4 @52781 has 206 MA's), (5, 52754), (Start: 7 @52736 has 3 MA's), (10, 52682), (12, 52649), (13, 52616), (18, 52526), (22, 52364), (24, 52352), (26, 52325), (27, 52310), (33, 52202),

Gene: Karn_60 Start: 52438, Stop: 51917, Start Num: 3

Candidate Starts for Karn_60:

(Start: 1 @52492 has 1 MA's), (Start: 3 @52438 has 51 MA's), (Start: 4 @52426 has 206 MA's), (5, 52399), (Start: 7 @52381 has 3 MA's), (12, 52294), (22, 52108), (24, 52096), (26, 52069), (33, 51946),

Gene: Katniss_60 Start: 52151, Stop: 51570, Start Num: 3

Candidate Starts for Katniss_60:

(Start: 1 @52205 has 1 MA's), (Start: 3 @52151 has 51 MA's), (Start: 4 @52139 has 206 MA's), (5, 52112), (Start: 7 @52094 has 3 MA's), (12, 52007), (18, 51926), (22, 51764), (24, 51752), (26, 51725), (33, 51602),

Gene: Khan1_60 Start: 52657, Stop: 52088, Start Num: 4

Candidate Starts for Khan1_60:

(Start: 1 @52723 has 1 MA's), (Start: 3 @52669 has 51 MA's), (Start: 4 @52657 has 206 MA's), (Start: 7 @52612 has 3 MA's), (12, 52525), (18, 52444), (22, 52282), (24, 52270), (26, 52243), (33, 52120),

Gene: Kikipoo_61 Start: 52691, Stop: 52122, Start Num: 4

Candidate Starts for Kikipoo_61:

(Start: 1 @52757 has 1 MA's), (Start: 3 @52703 has 51 MA's), (Start: 4 @52691 has 206 MA's), (5, 52664), (Start: 7 @52646 has 3 MA's), (12, 52559), (18, 52478), (22, 52316), (24, 52304), (26, 52277), (33, 52154),

Gene: KingTut_51 Start: 48382, Stop: 47795, Start Num: 3

Candidate Starts for KingTut_51:

(Start: 3 @48382 has 51 MA's), (5, 48337), (Start: 7 @48319 has 3 MA's), (12, 48232), (18, 48151), (22, 47989), (24, 47977), (26, 47950), (33, 47827),

Gene: KingVeVeVe_58 Start: 51721, Stop: 51098, Start Num: 3

Candidate Starts for KingVeVeVe_58:

(Start: 1 @51775 has 1 MA's), (Start: 3 @51721 has 51 MA's), (Start: 4 @51709 has 206 MA's), (5, 51682), (Start: 7 @51664 has 3 MA's), (10, 51610), (12, 51577), (13, 51544), (18, 51454), (22, 51292), (24, 51280), (26, 51253), (27, 51238), (33, 51130),

Gene: KlimbOn_59 Start: 52200, Stop: 51589, Start Num: 4

Candidate Starts for KlimbOn_59:

(Start: 1 @52266 has 1 MA's), (Start: 3 @52212 has 51 MA's), (Start: 4 @52200 has 206 MA's), (5, 52173), (Start: 7 @52155 has 3 MA's), (10, 52101), (12, 52068), (13, 52035), (18, 51945), (22, 51783), (24, 51771), (26, 51744), (27, 51729), (33, 51621),

Gene: Kloppinator_60 Start: 52351, Stop: 51743, Start Num: 4

Candidate Starts for Kloppinator_60:

(Start: 1 @52417 has 1 MA's), (Start: 3 @52363 has 51 MA's), (Start: 4 @52351 has 206 MA's), (5, 52324), (Start: 7 @52306 has 3 MA's), (10, 52252), (12, 52219), (13, 52186), (18, 52096), (22, 51934), (24, 51922), (26, 51895), (27, 51880), (33, 51772),

Gene: Kwadwo_58 Start: 52152, Stop: 51583, Start Num: 4

Candidate Starts for Kwadwo_58:

(Start: 1 @52218 has 1 MA's), (Start: 3 @52164 has 51 MA's), (Start: 4 @52152 has 206 MA's), (5, 52125), (Start: 7 @52107 has 3 MA's), (12, 52020), (18, 51939), (22, 51777), (24, 51765), (26, 51738),

(33, 51615),

Gene: Kwksand96_60 Start: 52293, Stop: 51772, Start Num: 3

Candidate Starts for Kwksand96_60:

(Start: 1 @52347 has 1 MA's), (Start: 3 @52293 has 51 MA's), (Start: 4 @52281 has 206 MA's), (5, 52254), (Start: 7 @52236 has 3 MA's), (12, 52149), (22, 51963), (24, 51951), (26, 51924), (33, 51801),

Gene: Labeouficaum_60 Start: 52275, Stop: 51766, Start Num: 4

Candidate Starts for Labeouficaum_60:

(Start: 1 @52341 has 1 MA's), (Start: 3 @52287 has 51 MA's), (Start: 4 @52275 has 206 MA's), (5, 52248), (Start: 7 @52230 has 3 MA's), (12, 52143), (22, 51957), (24, 51945), (26, 51918), (33, 51795),

Gene: Larson_63 Start: 52447, Stop: 51881, Start Num: 7

Candidate Starts for Larson_63:

(Start: 1 @52558 has 1 MA's), (Start: 3 @52504 has 51 MA's), (Start: 4 @52492 has 206 MA's), (5, 52465), (Start: 7 @52447 has 3 MA's), (10, 52393), (12, 52360), (13, 52327), (18, 52237), (22, 52075), (24, 52063), (26, 52036), (33, 51913),

Gene: LasagnaCat_61 Start: 52564, Stop: 51995, Start Num: 4

Candidate Starts for LasagnaCat_61:

(Start: 1 @52630 has 1 MA's), (Start: 3 @52576 has 51 MA's), (Start: 4 @52564 has 206 MA's), (5, 52537), (Start: 7 @52519 has 3 MA's), (12, 52432), (18, 52351), (22, 52189), (24, 52177), (26, 52150), (33, 52027),

Gene: Lasso_60 Start: 52427, Stop: 51858, Start Num: 4

Candidate Starts for Lasso_60:

(Start: 1 @52493 has 1 MA's), (Start: 3 @52439 has 51 MA's), (Start: 4 @52427 has 206 MA's), (5, 52400), (Start: 7 @52382 has 3 MA's), (12, 52295), (18, 52214), (22, 52052), (24, 52040), (26, 52013), (33, 51890),

Gene: LeeLot_60 Start: 52782, Stop: 52213, Start Num: 4

Candidate Starts for LeeLot_60:

(Start: 1 @52848 has 1 MA's), (Start: 3 @52794 has 51 MA's), (Start: 4 @52782 has 206 MA's), (5, 52755), (Start: 7 @52737 has 3 MA's), (12, 52650), (18, 52569), (22, 52407), (24, 52395), (26, 52368), (33, 52245),

Gene: Legolas_61 Start: 52521, Stop: 52009, Start Num: 4

Candidate Starts for Legolas_61:

(Start: 1 @52587 has 1 MA's), (Start: 3 @52533 has 51 MA's), (Start: 4 @52521 has 206 MA's), (5, 52494), (Start: 7 @52476 has 3 MA's), (Start: 11 @52413 has 1 MA's), (12, 52389), (22, 52203), (24, 52191), (26, 52164), (33, 52041),

Gene: Lehmann_61 Start: 52248, Stop: 51685, Start Num: 7

Candidate Starts for Lehmann_61:

(Start: 1 @52359 has 1 MA's), (Start: 3 @52305 has 51 MA's), (Start: 4 @52293 has 206 MA's), (5, 52266), (Start: 7 @52248 has 3 MA's), (10, 52194), (12, 52161), (13, 52128), (18, 52038), (22, 51876), (24, 51864), (26, 51837), (27, 51822), (33, 51714),

Gene: LeiMonet_61 Start: 52114, Stop: 51527, Start Num: 3

Candidate Starts for LeiMonet_61:

(Start: 3 @52114 has 51 MA's), (5, 52069), (Start: 7 @52051 has 3 MA's), (12, 51964), (18, 51883), (22, 51721), (24, 51709), (26, 51682), (33, 51559),

Gene: LemonSlice_60 Start: 52112, Stop: 51600, Start Num: 4

Candidate Starts for LemonSlice_60:

(Start: 1 @52178 has 1 MA's), (Start: 3 @52124 has 51 MA's), (Start: 4 @52112 has 206 MA's), (5, 52085), (Start: 7 @52067 has 3 MA's), (Start: 11 @52004 has 1 MA's), (12, 51980), (22, 51794), (24, 51782), (26, 51755), (33, 51632),

Gene: Longacauda_60 Start: 52541, Stop: 51972, Start Num: 4

Candidate Starts for Longacauda_60:

(Start: 1 @52607 has 1 MA's), (Start: 3 @52553 has 51 MA's), (Start: 4 @52541 has 206 MA's), (Start: 7 @52496 has 3 MA's), (12, 52409), (18, 52328), (22, 52166), (24, 52154), (26, 52127), (33, 52004),

Gene: Lopsy_57 Start: 51316, Stop: 50690, Start Num: 3

Candidate Starts for Lopsy_57:

(Start: 3 @51316 has 51 MA's), (5, 51271), (Start: 7 @51253 has 3 MA's), (10, 51199), (12, 51166), (13, 51133), (18, 51043), (22, 50881), (24, 50869), (26, 50842), (27, 50827), (33, 50719),

Gene: LostAndPhound_59 Start: 52202, Stop: 51615, Start Num: 3

Candidate Starts for LostAndPhound_59:

(Start: 3 @52202 has 51 MA's), (5, 52157), (Start: 7 @52139 has 3 MA's), (12, 52052), (18, 51971), (22, 51809), (24, 51797), (26, 51770), (27, 51755), (33, 51647),

Gene: LuckyMarjie_57 Start: 51902, Stop: 51291, Start Num: 4

Candidate Starts for LuckyMarjie_57:

(Start: 1 @51968 has 1 MA's), (Start: 3 @51914 has 51 MA's), (Start: 4 @51902 has 206 MA's), (5, 51875), (Start: 7 @51857 has 3 MA's), (10, 51803), (12, 51770), (13, 51737), (18, 51647), (22, 51485), (24, 51473), (26, 51446), (33, 51323),

Gene: Lulumae_57 Start: 51887, Stop: 51276, Start Num: 4

Candidate Starts for Lulumae_57:

(Start: 1 @51953 has 1 MA's), (Start: 3 @51899 has 51 MA's), (Start: 4 @51887 has 206 MA's), (5, 51860), (Start: 7 @51842 has 3 MA's), (10, 51788), (12, 51755), (13, 51722), (18, 51632), (22, 51470), (24, 51458), (26, 51431), (33, 51308),

Gene: Lulwa_57 Start: 51484, Stop: 50915, Start Num: 4

Candidate Starts for Lulwa_57:

(Start: 1 @51550 has 1 MA's), (Start: 3 @51496 has 51 MA's), (Start: 4 @51484 has 206 MA's), (5, 51457), (Start: 7 @51439 has 3 MA's), (12, 51352), (18, 51271), (22, 51109), (24, 51097), (26, 51070), (33, 50947),

Gene: Lumine_60 Start: 52371, Stop: 51760, Start Num: 4

Candidate Starts for Lumine_60:

(Start: 1 @52437 has 1 MA's), (Start: 3 @52383 has 51 MA's), (Start: 4 @52371 has 206 MA's), (5, 52344), (Start: 7 @52326 has 3 MA's), (10, 52272), (12, 52239), (13, 52206), (18, 52116), (22, 51954), (24, 51942), (26, 51915), (33, 51792),

Gene: MRabcd_59 Start: 52495, Stop: 51980, Start Num: 4

Candidate Starts for MRabcd_59:

(Start: 1 @52561 has 1 MA's), (Start: 3 @52507 has 51 MA's), (Start: 4 @52495 has 206 MA's), (5, 52468), (Start: 7 @52450 has 3 MA's), (12, 52363), (22, 52171), (24, 52159), (26, 52132), (33, 52009),

Gene: Mag7_60 Start: 52331, Stop: 51723, Start Num: 4

Candidate Starts for Mag7_60:

(Start: 1 @52397 has 1 MA's), (Start: 3 @52343 has 51 MA's), (Start: 4 @52331 has 206 MA's), (5, 52304), (Start: 7 @52286 has 3 MA's), (10, 52232), (12, 52199), (13, 52166), (18, 52076), (22, 51914), (24, 51902), (26, 51875), (27, 51860), (33, 51752),

Gene: Magic8_60 Start: 52483, Stop: 51914, Start Num: 4

Candidate Starts for Magic8_60:

(Start: 1 @52549 has 1 MA's), (Start: 3 @52495 has 51 MA's), (Start: 4 @52483 has 206 MA's), (5, 52456), (Start: 7 @52438 has 3 MA's), (12, 52351), (18, 52270), (22, 52108), (24, 52096), (26, 52069), (27, 52054), (33, 51946),

Gene: Mana_58 Start: 52167, Stop: 51598, Start Num: 4

Candidate Starts for Mana_58:

(Start: 1 @52233 has 1 MA's), (Start: 3 @52179 has 51 MA's), (Start: 4 @52167 has 206 MA's), (5, 52140), (Start: 7 @52122 has 3 MA's), (12, 52035), (18, 51954), (22, 51792), (24, 51780), (26, 51753), (33, 51630),

Gene: Manad_59 Start: 52463, Stop: 51885, Start Num: 3

Candidate Starts for Manad_59:

(Start: 1 @52517 has 1 MA's), (Start: 3 @52463 has 51 MA's), (Start: 4 @52451 has 206 MA's), (5, 52424), (Start: 7 @52406 has 3 MA's), (10, 52352), (Start: 11 @52343 has 1 MA's), (12, 52319), (18, 52238), (22, 52076), (24, 52064), (26, 52037), (27, 52022), (33, 51914),

Gene: Maru_59 Start: 52606, Stop: 52037, Start Num: 4

Candidate Starts for Maru_59:

(Start: 1 @52672 has 1 MA's), (Start: 3 @52618 has 51 MA's), (Start: 4 @52606 has 206 MA's), (5, 52579), (Start: 7 @52561 has 3 MA's), (12, 52474), (18, 52393), (22, 52231), (24, 52219), (26, 52192), (33, 52069),

Gene: Maskar_61 Start: 52401, Stop: 51892, Start Num: 4

Candidate Starts for Maskar_61:

(Start: 1 @52467 has 1 MA's), (Start: 3 @52413 has 51 MA's), (Start: 4 @52401 has 206 MA's), (5, 52374), (Start: 7 @52356 has 3 MA's), (12, 52269), (22, 52083), (24, 52071), (26, 52044), (33, 51921),

Gene: Matalotodo_58 Start: 52195, Stop: 51608, Start Num: 3

Candidate Starts for Matalotodo_58:

(Start: 3 @52195 has 51 MA's), (5, 52150), (Start: 7 @52132 has 3 MA's), (12, 52045), (18, 51964), (22, 51802), (24, 51790), (26, 51763), (33, 51640),

Gene: Mcshane_58 Start: 52165, Stop: 51596, Start Num: 4

Candidate Starts for Mcshane_58:

(Start: 1 @52231 has 1 MA's), (Start: 3 @52177 has 51 MA's), (Start: 4 @52165 has 206 MA's), (5, 52138), (Start: 7 @52120 has 3 MA's), (12, 52033), (18, 51952), (22, 51790), (24, 51778), (26, 51751), (33, 51628),

Gene: Megamind20_60 Start: 52108, Stop: 51584, Start Num: 7

Candidate Starts for Megamind20_60:

(Start: 1 @52219 has 1 MA's), (Start: 3 @52165 has 51 MA's), (Start: 4 @52153 has 206 MA's), (5, 52126), (Start: 7 @52108 has 3 MA's), (12, 52021), (18, 51940), (22, 51778), (24, 51766), (26, 51739), (33, 51616),

Gene: Megatron_60 Start: 52691, Stop: 52110, Start Num: 3

Candidate Starts for Megatron_60:

(Start: 1 @52745 has 1 MA's), (Start: 3 @52691 has 51 MA's), (Start: 4 @52679 has 206 MA's), (5, 52652), (Start: 7 @52634 has 3 MA's), (12, 52547), (18, 52466), (22, 52304), (24, 52292), (26, 52265), (33, 52142),

Gene: Melc17_59 Start: 52996, Stop: 52427, Start Num: 4

Candidate Starts for Melc17_59:

(Start: 1 @53062 has 1 MA's), (Start: 3 @53008 has 51 MA's), (Start: 4 @52996 has 206 MA's), (5, 52969), (Start: 7 @52951 has 3 MA's), (12, 52864), (18, 52783), (22, 52621), (24, 52609), (26, 52582), (27, 52567), (33, 52459),

Gene: MelsMeow_60 Start: 52454, Stop: 51945, Start Num: 4

Candidate Starts for MelsMeow_60:

(Start: 1 @52520 has 1 MA's), (Start: 3 @52466 has 51 MA's), (Start: 4 @52454 has 206 MA's), (5, 52427), (Start: 7 @52409 has 3 MA's), (12, 52322), (22, 52136), (24, 52124), (26, 52097), (33, 51974),

Gene: Mesh1_61 Start: 52743, Stop: 52129, Start Num: 4

Candidate Starts for Mesh1_61:

(Start: 1 @52809 has 1 MA's), (Start: 3 @52755 has 51 MA's), (Start: 4 @52743 has 206 MA's), (5, 52716), (Start: 7 @52698 has 3 MA's), (10, 52644), (12, 52611), (13, 52578), (18, 52485), (22, 52323), (24, 52311), (26, 52284), (33, 52161),

Gene: MichaelPhcott_60 Start: 52328, Stop: 51720, Start Num: 4

Candidate Starts for MichaelPhcott_60:

(Start: 1 @52394 has 1 MA's), (Start: 3 @52340 has 51 MA's), (Start: 4 @52328 has 206 MA's), (5, 52301), (Start: 7 @52283 has 3 MA's), (10, 52229), (12, 52196), (13, 52163), (18, 52073), (22, 51911), (24, 51899), (26, 51872), (27, 51857), (33, 51749),

Gene: Mikota_58 Start: 51706, Stop: 51095, Start Num: 4

Candidate Starts for Mikota_58:

(Start: 1 @51772 has 1 MA's), (Start: 3 @51718 has 51 MA's), (Start: 4 @51706 has 206 MA's), (5, 51679), (Start: 7 @51661 has 3 MA's), (10, 51607), (12, 51574), (13, 51541), (18, 51451), (22, 51289), (24, 51277), (26, 51250), (27, 51235), (33, 51127),

Gene: MiniBoss_57 Start: 51512, Stop: 50901, Start Num: 4

Candidate Starts for MiniBoss_57:

(Start: 1 @51578 has 1 MA's), (Start: 3 @51524 has 51 MA's), (Start: 4 @51512 has 206 MA's), (5, 51485), (Start: 7 @51467 has 3 MA's), (10, 51413), (12, 51380), (13, 51347), (18, 51257), (22, 51095), (24, 51083), (26, 51056), (33, 50933),

Gene: MitKao_59 Start: 52177, Stop: 51608, Start Num: 4

Candidate Starts for MitKao_59:

(Start: 1 @52243 has 1 MA's), (Start: 3 @52189 has 51 MA's), (Start: 4 @52177 has 206 MA's), (5, 52150), (Start: 7 @52132 has 3 MA's), (12, 52045), (18, 51964), (22, 51802), (24, 51790), (26, 51763), (33, 51640),

Gene: Morgushi_59 Start: 52166, Stop: 51597, Start Num: 4

Candidate Starts for Morgushi_59:

(Start: 1 @52232 has 1 MA's), (Start: 3 @52178 has 51 MA's), (Start: 4 @52166 has 206 MA's), (5, 52139), (Start: 7 @52121 has 3 MA's), (12, 52034), (18, 51953), (22, 51791), (24, 51779), (26, 51752), (33, 51629),

Gene: Morty_60 Start: 52688, Stop: 52119, Start Num: 4

Candidate Starts for Morty_60:

(Start: 1 @52754 has 1 MA's), (Start: 3 @52700 has 51 MA's), (Start: 4 @52688 has 206 MA's), (5, 52661), (Start: 7 @52643 has 3 MA's), (12, 52556), (18, 52475), (22, 52313), (24, 52301), (26, 52274), (33, 52151),

Gene: Mosaic_58 Start: 52171, Stop: 51602, Start Num: 4

Candidate Starts for Mosaic_58:

(Start: 1 @52237 has 1 MA's), (Start: 3 @52183 has 51 MA's), (Start: 4 @52171 has 206 MA's), (5, 52144), (Start: 7 @52126 has 3 MA's), (12, 52039), (18, 51958), (22, 51796), (24, 51784), (26, 51757), (33, 51634),

Gene: MrPhizzler_62 Start: 52634, Stop: 52065, Start Num: 4

Candidate Starts for MrPhizzler_62:

(Start: 1 @52700 has 1 MA's), (Start: 3 @52646 has 51 MA's), (Start: 4 @52634 has 206 MA's), (Start: 7 @52589 has 3 MA's), (12, 52502), (18, 52421), (22, 52259), (24, 52247), (26, 52220), (33, 52097),

Gene: Mulan_59 Start: 52405, Stop: 51836, Start Num: 4

Candidate Starts for Mulan_59:

(Start: 1 @52471 has 1 MA's), (Start: 3 @52417 has 51 MA's), (Start: 4 @52405 has 206 MA's), (5, 52378), (Start: 7 @52360 has 3 MA's), (12, 52273), (18, 52192), (22, 52030), (24, 52018), (26, 51991), (33, 51868),

Gene: Murdoc_58 Start: 52167, Stop: 51598, Start Num: 4

Candidate Starts for Murdoc_58:

(Start: 1 @52233 has 1 MA's), (Start: 3 @52179 has 51 MA's), (Start: 4 @52167 has 206 MA's), (5, 52140), (Start: 7 @52122 has 3 MA's), (12, 52035), (18, 51954), (22, 51792), (24, 51780), (26, 51753), (33, 51630),

Gene: Mutante_59 Start: 52177, Stop: 51608, Start Num: 4

Candidate Starts for Mutante_59:

(Start: 1 @52243 has 1 MA's), (Start: 3 @52189 has 51 MA's), (Start: 4 @52177 has 206 MA's), (Start: 7 @52132 has 3 MA's), (12, 52045), (18, 51964), (22, 51802), (24, 51790), (26, 51763), (33, 51640),

Gene: Nacho_0061 Start: 52937, Stop: 52314, Start Num: 3

Candidate Starts for Nacho_0061:

(Start: 1 @52991 has 1 MA's), (Start: 3 @52937 has 51 MA's), (Start: 4 @52925 has 206 MA's), (5, 52898), (Start: 7 @52880 has 3 MA's), (10, 52826), (12, 52793), (13, 52760), (18, 52670), (22, 52508), (24, 52496), (26, 52469), (27, 52454), (33, 52346), (34, 52331),

Gene: Nathan_60 Start: 52258, Stop: 51689, Start Num: 4

Candidate Starts for Nathan_60:

(Start: 1 @52324 has 1 MA's), (Start: 3 @52270 has 51 MA's), (Start: 4 @52258 has 206 MA's), (Start: 7 @52213 has 3 MA's), (12, 52126), (18, 52045), (22, 51883), (24, 51871), (26, 51844), (33, 51721),

Gene: Newman_58 Start: 52203, Stop: 51592, Start Num: 4

Candidate Starts for Newman_58:

(Start: 1 @52269 has 1 MA's), (Start: 3 @52215 has 51 MA's), (Start: 4 @52203 has 206 MA's), (5, 52176), (Start: 7 @52158 has 3 MA's), (10, 52104), (12, 52071), (13, 52038), (18, 51948), (22, 51786), (24, 51774), (26, 51747), (27, 51732), (33, 51624),

Gene: Nicole21_60 Start: 52456, Stop: 51845, Start Num: 4

Candidate Starts for Nicole21_60:

(Start: 1 @52522 has 1 MA's), (Start: 3 @52468 has 51 MA's), (Start: 4 @52456 has 206 MA's), (5, 52429), (Start: 7 @52411 has 3 MA's), (10, 52357), (12, 52324), (13, 52291), (18, 52201), (22, 52039),

(24, 52027), (26, 52000), (33, 51877),

Gene: Numberten_59 Start: 52400, Stop: 51789, Start Num: 4

Candidate Starts for Numberten_59:

(Start: 1 @52466 has 1 MA's), (Start: 3 @52412 has 51 MA's), (Start: 4 @52400 has 206 MA's), (5, 52373), (Start: 7 @52355 has 3 MA's), (10, 52301), (12, 52268), (13, 52235), (18, 52145), (22, 51983), (24, 51971), (26, 51944), (27, 51929), (33, 51821), (34, 51806),

Gene: OSmaximus_61 Start: 52921, Stop: 52352, Start Num: 4

Candidate Starts for OSmaximus_61:

(Start: 1 @52987 has 1 MA's), (Start: 3 @52933 has 51 MA's), (Start: 4 @52921 has 206 MA's), (5, 52894), (Start: 7 @52876 has 3 MA's), (12, 52789), (18, 52708), (22, 52546), (24, 52534), (26, 52507), (27, 52492), (33, 52384),

Gene: Oline_60 Start: 52279, Stop: 51770, Start Num: 4

Candidate Starts for Oline_60:

(Start: 1 @52345 has 1 MA's), (Start: 3 @52291 has 51 MA's), (Start: 4 @52279 has 206 MA's), (5, 52252), (Start: 7 @52234 has 3 MA's), (12, 52147), (22, 51961), (24, 51949), (26, 51922), (33, 51799),

Gene: Olive_59 Start: 52403, Stop: 51780, Start Num: 3

Candidate Starts for Olive_59:

(Start: 1 @52457 has 1 MA's), (Start: 3 @52403 has 51 MA's), (Start: 4 @52391 has 206 MA's), (5, 52364), (Start: 7 @52346 has 3 MA's), (10, 52292), (12, 52259), (13, 52226), (18, 52136), (22, 51974), (24, 51962), (26, 51935), (27, 51920), (33, 51812), (34, 51797),

Gene: OliverWalter_58 Start: 52210, Stop: 51599, Start Num: 4

Candidate Starts for OliverWalter_58:

(Start: 1 @52276 has 1 MA's), (Start: 3 @52222 has 51 MA's), (Start: 4 @52210 has 206 MA's), (5, 52183), (Start: 7 @52165 has 3 MA's), (10, 52111), (12, 52078), (13, 52045), (18, 51955), (22, 51793), (24, 51781), (26, 51754), (27, 51739), (33, 51631),

Gene: OneBrain_62 Start: 52396, Stop: 51830, Start Num: 7

Candidate Starts for OneBrain_62:

(Start: 1 @52507 has 1 MA's), (Start: 3 @52453 has 51 MA's), (Start: 4 @52441 has 206 MA's), (5, 52414), (Start: 7 @52396 has 3 MA's), (10, 52342), (12, 52309), (13, 52276), (18, 52186), (22, 52024), (24, 52012), (26, 51985), (27, 51970), (33, 51862), (34, 51847),

Gene: Oosterbaan_59 Start: 52457, Stop: 51888, Start Num: 4

Candidate Starts for Oosterbaan_59:

(Start: 1 @52523 has 1 MA's), (Start: 3 @52469 has 51 MA's), (Start: 4 @52457 has 206 MA's), (5, 52430), (Start: 7 @52412 has 3 MA's), (12, 52325), (18, 52244), (22, 52082), (24, 52070), (26, 52043), (33, 51920),

Gene: Orfeu_57 Start: 52190, Stop: 51561, Start Num: 3

Candidate Starts for Orfeu_57:

(Start: 3 @52190 has 51 MA's), (5, 52145), (Start: 7 @52127 has 3 MA's), (10, 52073), (12, 52040), (13, 52007), (18, 51917), (22, 51755), (24, 51743), (26, 51716), (27, 51701), (33, 51593),

Gene: Orion_61 Start: 52119, Stop: 51550, Start Num: 4

Candidate Starts for Orion_61:

(Start: 1 @52185 has 1 MA's), (Start: 3 @52131 has 51 MA's), (Start: 4 @52119 has 206 MA's), (5, 52092), (Start: 7 @52074 has 3 MA's), (12, 51987), (18, 51906), (22, 51744), (24, 51732), (26, 51705), (33, 51582),

Gene: Orwigg_59 Start: 52099, Stop: 51530, Start Num: 4

Candidate Starts for Orwigg_59:

(Start: 1 @52165 has 1 MA's), (Start: 3 @52111 has 51 MA's), (Start: 4 @52099 has 206 MA's), (5, 52072), (Start: 7 @52054 has 3 MA's), (12, 51967), (18, 51886), (22, 51724), (24, 51712), (26, 51685), (33, 51562),

Gene: PG1_60 Start: 52702, Stop: 52121, Start Num: 3

Candidate Starts for PG1_60:

(Start: 1 @52756 has 1 MA's), (Start: 3 @52702 has 51 MA's), (Start: 4 @52690 has 206 MA's), (5, 52663), (Start: 7 @52645 has 3 MA's), (12, 52558), (18, 52477), (22, 52315), (24, 52303), (26, 52276), (33, 52153),

Gene: Pacifista_58 Start: 52174, Stop: 51563, Start Num: 4

Candidate Starts for Pacifista_58:

(Start: 1 @52240 has 1 MA's), (Start: 3 @52186 has 51 MA's), (Start: 4 @52174 has 206 MA's), (5, 52147), (Start: 7 @52129 has 3 MA's), (10, 52075), (12, 52042), (13, 52009), (18, 51919), (22, 51757), (24, 51745), (26, 51718), (33, 51595),

Gene: PallasAthena_61 Start: 52188, Stop: 51607, Start Num: 3

Candidate Starts for PallasAthena_61:

(Start: 1 @52242 has 1 MA's), (Start: 3 @52188 has 51 MA's), (Start: 4 @52176 has 206 MA's), (5, 52149), (Start: 7 @52131 has 3 MA's), (12, 52044), (18, 51963), (22, 51801), (24, 51789), (26, 51762), (33, 51639),

Gene: PenguinLover67_55 Start: 52752, Stop: 52183, Start Num: 9

Candidate Starts for PenguinLover67_55:

(Start: 9 @52752 has 1 MA's), (20, 52500), (24, 52362), (28, 52311), (30, 52305), (31, 52296), (32, 52248),

Gene: Phamished_61 Start: 52381, Stop: 51770, Start Num: 4

Candidate Starts for Phamished_61:

(Start: 1 @52447 has 1 MA's), (Start: 3 @52393 has 51 MA's), (Start: 4 @52381 has 206 MA's), (5, 52354), (Start: 7 @52336 has 3 MA's), (12, 52249), (13, 52216), (18, 52126), (22, 51964), (24, 51952), (26, 51925), (27, 51910), (33, 51802), (34, 51787),

Gene: Phareon_58 Start: 51896, Stop: 51285, Start Num: 4

Candidate Starts for Phareon_58:

(Start: 1 @51962 has 1 MA's), (Start: 3 @51908 has 51 MA's), (Start: 4 @51896 has 206 MA's), (5, 51869), (Start: 7 @51851 has 3 MA's), (10, 51797), (12, 51764), (13, 51731), (18, 51641), (22, 51479), (24, 51467), (26, 51440), (33, 51317),

Gene: PhatCats2014_60 Start: 52695, Stop: 52129, Start Num: 4

Candidate Starts for PhatCats2014_60:

(Start: 1 @52761 has 1 MA's), (Start: 3 @52707 has 51 MA's), (Start: 4 @52695 has 206 MA's), (5, 52668), (Start: 7 @52650 has 3 MA's), (12, 52563), (18, 52482), (22, 52320), (24, 52308), (26, 52281), (33, 52158),

Gene: PhatLouie_61 Start: 52725, Stop: 52102, Start Num: 3

Candidate Starts for PhatLouie_61:

(Start: 1 @52779 has 1 MA's), (Start: 3 @52725 has 51 MA's), (Start: 4 @52713 has 206 MA's), (5, 52686), (Start: 7 @52668 has 3 MA's), (10, 52614), (12, 52581), (13, 52548), (18, 52458), (22, 52296), (24, 52284), (26, 52257), (33, 52134),

Gene: PhenghisKhan_60 Start: 52350, Stop: 51829, Start Num: 3

Candidate Starts for PhenghisKhan_60:

(Start: 1 @52404 has 1 MA's), (Start: 3 @52350 has 51 MA's), (Start: 4 @52338 has 206 MA's), (5, 52311), (Start: 7 @52293 has 3 MA's), (12, 52206), (22, 52020), (24, 52008), (26, 51981), (33, 51858),

Gene: Pherdinand_61 Start: 52458, Stop: 51892, Start Num: 4

Candidate Starts for Pherdinand_61:

(Start: 1 @52524 has 1 MA's), (Start: 3 @52470 has 51 MA's), (Start: 4 @52458 has 206 MA's), (5, 52431), (Start: 7 @52413 has 3 MA's), (10, 52359), (Start: 11 @52350 has 1 MA's), (12, 52326), (18, 52245), (22, 52083), (24, 52071), (26, 52044), (27, 52029), (33, 51921),

Gene: Phergie_61 Start: 52330, Stop: 51821, Start Num: 4

Candidate Starts for Phergie_61:

(Start: 1 @52396 has 1 MA's), (Start: 3 @52342 has 51 MA's), (Start: 4 @52330 has 206 MA's), (5, 52303), (Start: 7 @52285 has 3 MA's), (12, 52198), (22, 52012), (24, 52000), (26, 51973), (33, 51850),

Gene: Phipps_59 Start: 51979, Stop: 51398, Start Num: 3

Candidate Starts for Phipps_59:

(Start: 1 @52033 has 1 MA's), (Start: 3 @51979 has 51 MA's), (Start: 4 @51967 has 206 MA's), (5, 51940), (Start: 7 @51922 has 3 MA's), (12, 51835), (18, 51754), (22, 51592), (24, 51580), (26, 51553), (33, 51430),

Gene: Phleuron_60 Start: 52331, Stop: 51723, Start Num: 4

Candidate Starts for Phleuron_60:

(Start: 1 @52397 has 1 MA's), (Start: 3 @52343 has 51 MA's), (Start: 4 @52331 has 206 MA's), (5, 52304), (Start: 7 @52286 has 3 MA's), (10, 52232), (12, 52199), (13, 52166), (18, 52076), (22, 51914), (24, 51902), (26, 51875), (27, 51860), (33, 51752),

Gene: PhrankReynolds_59 Start: 52335, Stop: 51826, Start Num: 4

Candidate Starts for PhrankReynolds_59:

(Start: 1 @52401 has 1 MA's), (Start: 3 @52347 has 51 MA's), (Start: 4 @52335 has 206 MA's), (5, 52308), (Start: 7 @52290 has 3 MA's), (12, 52203), (22, 52017), (24, 52005), (26, 51978), (33, 51855),

Gene: PhrodoBaggins_60 Start: 52567, Stop: 51986, Start Num: 3

Candidate Starts for PhrodoBaggins_60:

(Start: 1 @52621 has 1 MA's), (Start: 3 @52567 has 51 MA's), (Start: 4 @52555 has 206 MA's), (5, 52528), (Start: 7 @52510 has 3 MA's), (12, 52423), (18, 52342), (22, 52180), (24, 52168), (26, 52141), (33, 52018),

Gene: Phunky_58 Start: 52193, Stop: 51582, Start Num: 4

Candidate Starts for Phunky_58:

(Start: 1 @52259 has 1 MA's), (Start: 3 @52205 has 51 MA's), (Start: 4 @52193 has 206 MA's), (5, 52166), (Start: 7 @52148 has 3 MA's), (10, 52094), (12, 52061), (13, 52028), (18, 51938), (22, 51776), (24, 51764), (26, 51737), (33, 51614),

Gene: Piglet_0059 Start: 52679, Stop: 52098, Start Num: 3

Candidate Starts for Piglet_0059:

(Start: 1 @52733 has 1 MA's), (Start: 3 @52679 has 51 MA's), (Start: 4 @52667 has 206 MA's), (5, 52640), (Start: 7 @52622 has 3 MA's), (12, 52535), (18, 52454), (22, 52292), (24, 52280), (26, 52253), (33, 52130),

Gene: PinheadLarry_60 Start: 52692, Stop: 52123, Start Num: 4

Candidate Starts for PinheadLarry_60:

(Start: 1 @52758 has 1 MA's), (Start: 3 @52704 has 51 MA's), (Start: 4 @52692 has 206 MA's), (5, 52665), (Start: 7 @52647 has 3 MA's), (12, 52560), (18, 52479), (22, 52317), (24, 52305), (26, 52278), (33, 52155),

Gene: Pinkman_59 Start: 52285, Stop: 51764, Start Num: 3

Candidate Starts for Pinkman_59:

(Start: 1 @52339 has 1 MA's), (Start: 3 @52285 has 51 MA's), (Start: 4 @52273 has 206 MA's), (5, 52246), (Start: 7 @52228 has 3 MA's), (12, 52141), (22, 51955), (24, 51943), (26, 51916), (33, 51793),

Gene: Pipsqueak_58 Start: 52135, Stop: 51611, Start Num: 3

Candidate Starts for Pipsqueak_58:

(Start: 1 @52189 has 1 MA's), (Start: 3 @52135 has 51 MA's), (Start: 4 @52123 has 206 MA's), (5, 52096), (Start: 7 @52078 has 3 MA's), (Start: 11 @52015 has 1 MA's), (12, 51991), (22, 51805), (24, 51793), (26, 51766), (33, 51643),

Gene: Placalicious_59 Start: 52700, Stop: 52113, Start Num: 3

Candidate Starts for Placalicious_59:

(Start: 3 @52700 has 51 MA's), (5, 52655), (Start: 7 @52637 has 3 MA's), (12, 52550), (18, 52469), (22, 52307), (24, 52295), (26, 52268), (33, 52145),

Gene: Plata_60 Start: 52425, Stop: 51916, Start Num: 4

Candidate Starts for Plata_60:

(Start: 1 @52491 has 1 MA's), (Start: 3 @52437 has 51 MA's), (Start: 4 @52425 has 206 MA's), (5, 52398), (Start: 7 @52380 has 3 MA's), (12, 52293), (22, 52107), (24, 52095), (26, 52068), (33, 51945),

Gene: Plmatters_58 Start: 52197, Stop: 51586, Start Num: 4

Candidate Starts for Plmatters_58:

(Start: 1 @52263 has 1 MA's), (Start: 3 @52209 has 51 MA's), (Start: 4 @52197 has 206 MA's), (5, 52170), (Start: 7 @52152 has 3 MA's), (10, 52098), (12, 52065), (13, 52032), (18, 51942), (22, 51780), (24, 51768), (26, 51741), (33, 51618),

Gene: Podrick_57 Start: 51452, Stop: 50922, Start Num: 3

Candidate Starts for Podrick_57:

(Start: 3 @51452 has 51 MA's), (5, 51407), (Start: 7 @51389 has 3 MA's), (12, 51302), (22, 51116), (24, 51104), (26, 51077), (33, 50954),

Gene: Pops_59 Start: 52382, Stop: 51774, Start Num: 4

Candidate Starts for Pops_59:

(Start: 1 @52448 has 1 MA's), (Start: 3 @52394 has 51 MA's), (Start: 4 @52382 has 206 MA's), (5, 52355), (Start: 7 @52337 has 3 MA's), (10, 52283), (12, 52250), (13, 52217), (18, 52127), (22, 51965), (24, 51953), (26, 51926), (27, 51911), (33, 51803),

Gene: Potter_58 Start: 52200, Stop: 51619, Start Num: 3

Candidate Starts for Potter_58:

(Start: 1 @52254 has 1 MA's), (Start: 3 @52200 has 51 MA's), (Start: 4 @52188 has 206 MA's), (5, 52161), (Start: 7 @52143 has 3 MA's), (12, 52056), (18, 51975), (22, 51813), (24, 51801), (26, 51774), (33, 51651),

Gene: Prickles_61 Start: 52688, Stop: 52077, Start Num: 4

Candidate Starts for Prickles_61:

(Start: 1 @52754 has 1 MA's), (Start: 3 @52700 has 51 MA's), (Start: 4 @52688 has 206 MA's), (5, 52661), (Start: 7 @52643 has 3 MA's), (10, 52589), (12, 52556), (13, 52523), (18, 52433), (22, 52271),

(24, 52259), (26, 52232), (27, 52217), (33, 52109), (34, 52094),

Gene: Puhltonio_59 Start: 52462, Stop: 51893, Start Num: 4

Candidate Starts for Puhltonio_59:

(Start: 1 @52528 has 1 MA's), (Start: 3 @52474 has 51 MA's), (Start: 4 @52462 has 206 MA's), (5, 52435), (Start: 7 @52417 has 3 MA's), (12, 52330), (18, 52249), (22, 52087), (24, 52075), (26, 52048), (33, 51925),

Gene: Quisquilliae_60 Start: 52467, Stop: 51886, Start Num: 3

Candidate Starts for Quisquilliae_60:

(Start: 1 @52521 has 1 MA's), (Start: 3 @52467 has 51 MA's), (Start: 4 @52455 has 206 MA's), (5, 52428), (Start: 7 @52410 has 3 MA's), (12, 52323), (18, 52242), (22, 52080), (24, 52068), (26, 52041), (33, 51918),

Gene: Reccee_57 Start: 52652, Stop: 52143, Start Num: 8

Candidate Starts for Reccee_57:

(2, 52769), (8, 52652), (16, 52550), (19, 52460), (21, 52445), (25, 52322), (30, 52280),

Gene: RedMaple_61 Start: 52930, Stop: 52319, Start Num: 4

Candidate Starts for RedMaple_61:

(Start: 1 @52996 has 1 MA's), (Start: 3 @52942 has 51 MA's), (Start: 4 @52930 has 206 MA's), (5, 52903), (Start: 7 @52885 has 3 MA's), (10, 52831), (12, 52798), (13, 52765), (18, 52675), (22, 52513), (24, 52501), (26, 52474), (27, 52459), (33, 52351),

Gene: RedRaider89_60 Start: 52621, Stop: 52010, Start Num: 4

Candidate Starts for RedRaider89_60:

(Start: 1 @52687 has 1 MA's), (Start: 3 @52633 has 51 MA's), (Start: 4 @52621 has 206 MA's), (5, 52594), (Start: 7 @52576 has 3 MA's), (10, 52522), (12, 52489), (13, 52456), (18, 52366), (22, 52204), (24, 52192), (26, 52165), (27, 52150), (33, 52042), (34, 52027),

Gene: Ricotta_59 Start: 52187, Stop: 51576, Start Num: 4

Candidate Starts for Ricotta_59:

(Start: 1 @52253 has 1 MA's), (Start: 3 @52199 has 51 MA's), (Start: 4 @52187 has 206 MA's), (5, 52160), (Start: 7 @52142 has 3 MA's), (10, 52088), (12, 52055), (13, 52022), (18, 51932), (22, 51770), (24, 51758), (26, 51731), (33, 51608),

Gene: Riggan_60 Start: 52487, Stop: 51876, Start Num: 4

Candidate Starts for Riggan_60:

(Start: 1 @52553 has 1 MA's), (Start: 3 @52499 has 51 MA's), (Start: 4 @52487 has 206 MA's), (5, 52460), (Start: 7 @52442 has 3 MA's), (10, 52388), (12, 52355), (13, 52322), (18, 52232), (22, 52070), (24, 52058), (26, 52031), (33, 51908),

Gene: Rimu_59 Start: 52655, Stop: 52086, Start Num: 4

Candidate Starts for Rimu_59:

(Start: 1 @52721 has 1 MA's), (Start: 3 @52667 has 51 MA's), (Start: 4 @52655 has 206 MA's), (Start: 7 @52610 has 3 MA's), (12, 52523), (18, 52442), (22, 52280), (24, 52268), (26, 52241), (33, 52118),

Gene: Rita130_56 Start: 52477, Stop: 51968, Start Num: 8

Candidate Starts for Rita130_56:

(2, 52594), (8, 52477), (19, 52285), (23, 52144), (29, 52087),

Gene: Riverton_59 Start: 52370, Stop: 51804, Start Num: 7

Candidate Starts for Riverton_59:

(Start: 1 @52481 has 1 MA's), (Start: 3 @52427 has 51 MA's), (Start: 4 @52415 has 206 MA's), (5, 52388), (Start: 7 @52370 has 3 MA's), (10, 52316), (12, 52283), (13, 52250), (18, 52160), (22, 51998), (24, 51986), (26, 51959), (27, 51944), (33, 51836), (34, 51821),

Gene: Robyn_59 Start: 52289, Stop: 51726, Start Num: 7

Candidate Starts for Robyn_59:

(Start: 1 @52400 has 1 MA's), (Start: 3 @52346 has 51 MA's), (Start: 4 @52334 has 206 MA's), (5, 52307), (Start: 7 @52289 has 3 MA's), (10, 52235), (12, 52202), (13, 52169), (18, 52079), (22, 51917), (24, 51905), (26, 51878), (27, 51863), (33, 51755),

Gene: Roliet_57 Start: 51484, Stop: 50918, Start Num: 7

Candidate Starts for Roliet_57:

(Start: 1 @51595 has 1 MA's), (Start: 3 @51541 has 51 MA's), (Start: 4 @51529 has 206 MA's), (5, 51502), (Start: 7 @51484 has 3 MA's), (10, 51430), (12, 51397), (13, 51364), (18, 51274), (22, 51112), (24, 51100), (26, 51073), (27, 51058), (33, 50950),

Gene: Roscoe_60 Start: 52633, Stop: 52022, Start Num: 4

Candidate Starts for Roscoe_60:

(Start: 1 @52699 has 1 MA's), (Start: 3 @52645 has 51 MA's), (Start: 4 @52633 has 206 MA's), (5, 52606), (Start: 7 @52588 has 3 MA's), (10, 52534), (12, 52501), (13, 52468), (18, 52378), (22, 52216), (24, 52204), (26, 52177), (27, 52162), (33, 52054), (34, 52039),

Gene: Roy17_58 Start: 51887, Stop: 51276, Start Num: 4

Candidate Starts for Roy17_58:

(Start: 1 @51953 has 1 MA's), (Start: 3 @51899 has 51 MA's), (Start: 4 @51887 has 206 MA's), (5, 51860), (Start: 7 @51842 has 3 MA's), (10, 51788), (12, 51755), (13, 51722), (18, 51632), (22, 51470), (24, 51458), (26, 51431), (33, 51308),

Gene: SDcharge11_59 Start: 51701, Stop: 51090, Start Num: 4

Candidate Starts for SDcharge11_59:

(Start: 1 @51767 has 1 MA's), (Start: 3 @51713 has 51 MA's), (Start: 4 @51701 has 206 MA's), (5, 51674), (Start: 7 @51656 has 3 MA's), (10, 51602), (12, 51569), (13, 51536), (18, 51446), (22, 51284), (24, 51272), (26, 51245), (27, 51230), (33, 51122),

Gene: Saguaro_57 Start: 52820, Stop: 52314, Start Num: 11

Candidate Starts for Saguaro_57:

(6, 52901), (10, 52829), (Start: 11 @52820 has 1 MA's), (14, 52763), (15, 52721), (17, 52712), (19, 52628), (24, 52481), (25, 52469), (26, 52451), (30, 52424),

Gene: SallyH_62 Start: 52453, Stop: 51875, Start Num: 3

Candidate Starts for SallyH_62:

(Start: 1 @52507 has 1 MA's), (Start: 3 @52453 has 51 MA's), (Start: 4 @52441 has 206 MA's), (5, 52414), (Start: 7 @52396 has 3 MA's), (10, 52342), (Start: 11 @52333 has 1 MA's), (12, 52309), (18, 52228), (22, 52066), (24, 52054), (26, 52027), (27, 52012), (33, 51904),

Gene: SassyCat97_58 Start: 52191, Stop: 51610, Start Num: 3

Candidate Starts for SassyCat97_58:

(Start: 1 @52245 has 1 MA's), (Start: 3 @52191 has 51 MA's), (Start: 4 @52179 has 206 MA's), (5, 52152), (Start: 7 @52134 has 3 MA's), (12, 52047), (18, 51966), (22, 51804), (24, 51792), (26, 51765), (33, 51642),

Gene: Schadenfreude_59 Start: 52059, Stop: 51451, Start Num: 4

Candidate Starts for Schadenfreude_59:

(Start: 1 @52125 has 1 MA's), (Start: 3 @52071 has 51 MA's), (Start: 4 @52059 has 206 MA's), (5, 52032), (Start: 7 @52014 has 3 MA's), (10, 51960), (12, 51927), (13, 51894), (18, 51804), (22, 51642), (24, 51630), (26, 51603), (27, 51588), (33, 51480),

Gene: Schueller_60 Start: 52416, Stop: 51907, Start Num: 4

Candidate Starts for Schueller_60:

(Start: 1 @52482 has 1 MA's), (Start: 3 @52428 has 51 MA's), (Start: 4 @52416 has 206 MA's), (5, 52389), (Start: 7 @52371 has 3 MA's), (12, 52284), (22, 52098), (24, 52086), (26, 52059), (33, 51936),

Gene: Scoot17C_60 Start: 52121, Stop: 51552, Start Num: 4

Candidate Starts for Scoot17C_60:

(Start: 1 @52187 has 1 MA's), (Start: 3 @52133 has 51 MA's), (Start: 4 @52121 has 206 MA's), (5, 52094), (Start: 7 @52076 has 3 MA's), (12, 51989), (18, 51908), (22, 51746), (24, 51734), (26, 51707), (33, 51584),

Gene: Scrick_60 Start: 52193, Stop: 51624, Start Num: 4

Candidate Starts for Scrick_60:

(Start: 1 @52259 has 1 MA's), (Start: 3 @52205 has 51 MA's), (Start: 4 @52193 has 206 MA's), (5, 52166), (Start: 7 @52148 has 3 MA's), (12, 52061), (18, 51980), (22, 51818), (24, 51806), (26, 51779), (33, 51656),

Gene: Serendipity_59 Start: 52476, Stop: 51907, Start Num: 4

Candidate Starts for Serendipity_59:

(Start: 1 @52542 has 1 MA's), (Start: 3 @52488 has 51 MA's), (Start: 4 @52476 has 206 MA's), (5, 52449), (Start: 7 @52431 has 3 MA's), (12, 52344), (18, 52263), (22, 52101), (24, 52089), (26, 52062), (33, 51939),

Gene: Serpentine_0059 Start: 52571, Stop: 51990, Start Num: 3

Candidate Starts for Serpentine_0059:

(Start: 1 @52625 has 1 MA's), (Start: 3 @52571 has 51 MA's), (Start: 4 @52559 has 206 MA's), (5, 52532), (Start: 7 @52514 has 3 MA's), (12, 52427), (18, 52346), (22, 52184), (24, 52172), (26, 52145), (33, 52022),

Gene: ShadowBud_60 Start: 52407, Stop: 51883, Start Num: 7

Candidate Starts for ShadowBud_60:

(Start: 1 @52518 has 1 MA's), (Start: 3 @52464 has 51 MA's), (Start: 4 @52452 has 206 MA's), (5, 52425), (Start: 7 @52407 has 3 MA's), (12, 52320), (18, 52239), (22, 52077), (24, 52065), (26, 52038), (33, 51915),

Gene: Sheila_57 Start: 51561, Stop: 50950, Start Num: 4

Candidate Starts for Sheila_57:

(Start: 1 @51627 has 1 MA's), (Start: 3 @51573 has 51 MA's), (Start: 4 @51561 has 206 MA's), (5, 51534), (Start: 7 @51516 has 3 MA's), (10, 51462), (12, 51429), (13, 51396), (18, 51306), (22, 51144), (24, 51132), (26, 51105), (27, 51090), (33, 50982),

Gene: Sigman_60 Start: 52154, Stop: 51543, Start Num: 4

Candidate Starts for Sigman_60:

(Start: 1 @52220 has 1 MA's), (Start: 3 @52166 has 51 MA's), (Start: 4 @52154 has 206 MA's), (5, 52127), (Start: 7 @52109 has 3 MA's), (10, 52055), (12, 52022), (13, 51989), (18, 51899), (22, 51737), (24, 51725), (26, 51698), (33, 51575),

Gene: SilverBell_60 Start: 52451, Stop: 51828, Start Num: 3

Candidate Starts for SilverBell_60:

(Start: 1 @52505 has 1 MA's), (Start: 3 @52451 has 51 MA's), (Start: 4 @52439 has 206 MA's), (5, 52412), (Start: 7 @52394 has 3 MA's), (12, 52307), (13, 52274), (18, 52184), (22, 52022), (24, 52010), (26, 51983), (27, 51968), (33, 51860), (34, 51845),

Gene: Simielle_59 Start: 52158, Stop: 51547, Start Num: 4

Candidate Starts for Simielle_59:

(Start: 1 @52224 has 1 MA's), (Start: 3 @52170 has 51 MA's), (Start: 4 @52158 has 206 MA's), (5, 52131), (Start: 7 @52113 has 3 MA's), (10, 52059), (12, 52026), (13, 51993), (18, 51903), (22, 51741), (24, 51729), (26, 51702), (33, 51579),

Gene: SirBeauregard_60 Start: 52736, Stop: 52113, Start Num: 3

Candidate Starts for SirBeauregard_60:

(Start: 1 @52790 has 1 MA's), (Start: 3 @52736 has 51 MA's), (Start: 4 @52724 has 206 MA's), (5, 52697), (Start: 7 @52679 has 3 MA's), (10, 52625), (Start: 11 @52616 has 1 MA's), (12, 52592), (13, 52559), (18, 52469), (22, 52307), (24, 52295), (26, 52268), (33, 52145),

Gene: Skippy_60 Start: 52412, Stop: 51843, Start Num: 4

Candidate Starts for Skippy_60:

(Start: 1 @52478 has 1 MA's), (Start: 3 @52424 has 51 MA's), (Start: 4 @52412 has 206 MA's), (5, 52385), (Start: 7 @52367 has 3 MA's), (12, 52280), (18, 52199), (22, 52037), (24, 52025), (26, 51998), (33, 51875),

Gene: Slatt_60 Start: 52477, Stop: 51908, Start Num: 4

Candidate Starts for Slatt_60:

(Start: 1 @52543 has 1 MA's), (Start: 3 @52489 has 51 MA's), (Start: 4 @52477 has 206 MA's), (5, 52450), (Start: 7 @52432 has 3 MA's), (12, 52345), (18, 52264), (22, 52102), (24, 52090), (26, 52063), (33, 51940),

Gene: Soile_60 Start: 52701, Stop: 52132, Start Num: 4

Candidate Starts for Soile_60:

(Start: 1 @52767 has 1 MA's), (Start: 3 @52713 has 51 MA's), (Start: 4 @52701 has 206 MA's), (5, 52674), (Start: 7 @52656 has 3 MA's), (12, 52569), (18, 52488), (22, 52326), (24, 52314), (26, 52287), (33, 52164),

Gene: Solosis_58 Start: 52173, Stop: 51604, Start Num: 4

Candidate Starts for Solosis_58:

(Start: 1 @52239 has 1 MA's), (Start: 3 @52185 has 51 MA's), (Start: 4 @52173 has 206 MA's), (5, 52146), (Start: 7 @52128 has 3 MA's), (12, 52041), (18, 51960), (22, 51798), (24, 51786), (26, 51759), (33, 51636),

Gene: Sophia_58 Start: 52167, Stop: 51598, Start Num: 4

Candidate Starts for Sophia_58:

(Start: 1 @52233 has 1 MA's), (Start: 3 @52179 has 51 MA's), (Start: 4 @52167 has 206 MA's), (5, 52140), (Start: 7 @52122 has 3 MA's), (12, 52035), (18, 51954), (22, 51792), (24, 51780), (26, 51753), (33, 51630),

Gene: Soto_58 Start: 51734, Stop: 51123, Start Num: 4

Candidate Starts for Soto_58:

(Start: 1 @51800 has 1 MA's), (Start: 3 @51746 has 51 MA's), (Start: 4 @51734 has 206 MA's), (5, 51707), (Start: 7 @51689 has 3 MA's), (10, 51635), (12, 51602), (13, 51569), (18, 51479), (22, 51317), (24, 51305), (26, 51278), (27, 51263), (33, 51155),

Gene: Spartan300_59 Start: 52395, Stop: 51784, Start Num: 4

Candidate Starts for Spartan300_59:

(Start: 1 @52461 has 1 MA's), (Start: 3 @52407 has 51 MA's), (Start: 4 @52395 has 206 MA's), (5, 52368), (Start: 7 @52350 has 3 MA's), (10, 52296), (12, 52263), (13, 52230), (18, 52140), (22, 51978), (24, 51966), (26, 51939), (27, 51924), (33, 51816), (34, 51801),

Gene: Squid_59 Start: 52179, Stop: 51610, Start Num: 4

Candidate Starts for Squid_59:

(Start: 1 @52245 has 1 MA's), (Start: 3 @52191 has 51 MA's), (Start: 4 @52179 has 206 MA's), (5, 52152), (Start: 7 @52134 has 3 MA's), (12, 52047), (18, 51966), (22, 51804), (24, 51792), (26, 51765), (33, 51642),

Gene: Squiggle_60 Start: 52187, Stop: 51618, Start Num: 4

Candidate Starts for Squiggle_60:

(Start: 1 @52253 has 1 MA's), (Start: 3 @52199 has 51 MA's), (Start: 4 @52187 has 206 MA's), (Start: 7 @52142 has 3 MA's), (12, 52055), (18, 51974), (22, 51812), (24, 51800), (26, 51773), (33, 51650),

Gene: Struggle_60 Start: 52264, Stop: 51755, Start Num: 4

Candidate Starts for Struggle_60:

(Start: 1 @52330 has 1 MA's), (Start: 3 @52276 has 51 MA's), (Start: 4 @52264 has 206 MA's), (5, 52237), (Start: 7 @52219 has 3 MA's), (12, 52132), (22, 51946), (24, 51934), (26, 51907), (33, 51784),

Gene: Suffolk_58 Start: 51694, Stop: 51113, Start Num: 3

Candidate Starts for Suffolk_58:

(Start: 1 @51748 has 1 MA's), (Start: 3 @51694 has 51 MA's), (Start: 4 @51682 has 206 MA's), (5, 51655), (Start: 7 @51637 has 3 MA's), (10, 51583), (Start: 11 @51574 has 1 MA's), (12, 51550), (18, 51469), (22, 51307), (24, 51295), (26, 51268), (27, 51253), (33, 51145),

Gene: Surely_59 Start: 52469, Stop: 51900, Start Num: 4

Candidate Starts for Surely_59:

(Start: 1 @52535 has 1 MA's), (Start: 3 @52481 has 51 MA's), (Start: 4 @52469 has 206 MA's), (5, 52442), (Start: 7 @52424 has 3 MA's), (12, 52337), (18, 52256), (22, 52094), (24, 52082), (26, 52055), (33, 51932),

Gene: Swiphy_61 Start: 52713, Stop: 52102, Start Num: 4

Candidate Starts for Swiphy_61:

(Start: 1 @52779 has 1 MA's), (Start: 3 @52725 has 51 MA's), (Start: 4 @52713 has 206 MA's), (5, 52686), (Start: 7 @52668 has 3 MA's), (10, 52614), (12, 52581), (13, 52548), (18, 52458), (22, 52296), (24, 52284), (26, 52257), (33, 52134),

Gene: Swish_61 Start: 52443, Stop: 51877, Start Num: 4

Candidate Starts for Swish_61:

(Start: 1 @52509 has 1 MA's), (Start: 3 @52455 has 51 MA's), (Start: 4 @52443 has 206 MA's), (5, 52416), (Start: 7 @52398 has 3 MA's), (10, 52344), (Start: 11 @52335 has 1 MA's), (12, 52311), (18, 52230), (22, 52068), (24, 52056), (26, 52029), (27, 52014), (33, 51906),

Gene: TallGrassMM_59 Start: 52083, Stop: 51514, Start Num: 4

Candidate Starts for TallGrassMM_59:

(Start: 1 @52149 has 1 MA's), (Start: 3 @52095 has 51 MA's), (Start: 4 @52083 has 206 MA's), (5, 52056), (Start: 7 @52038 has 3 MA's), (12, 51951), (18, 51870), (22, 51708), (24, 51696), (26, 51669), (33, 51546),

Gene: Telesworld_57 Start: 52288, Stop: 51677, Start Num: 4

Candidate Starts for Telesworld_57:

(Start: 1 @52354 has 1 MA's), (Start: 3 @52300 has 51 MA's), (Start: 4 @52288 has 206 MA's), (5, 52261), (Start: 7 @52243 has 3 MA's), (10, 52189), (Start: 11 @52180 has 1 MA's), (12, 52156), (13, 52123), (18, 52033), (22, 51871), (24, 51859), (26, 51832), (27, 51817), (33, 51709),

Gene: Thora_59 Start: 52465, Stop: 51896, Start Num: 4

Candidate Starts for Thora_59:

(Start: 1 @52531 has 1 MA's), (Start: 3 @52477 has 51 MA's), (Start: 4 @52465 has 206 MA's), (5, 52438), (Start: 7 @52420 has 3 MA's), (12, 52333), (18, 52252), (22, 52090), (24, 52078), (26, 52051), (33, 51928),

Gene: ThreeOh3D2_61 Start: 52686, Stop: 52120, Start Num: 4

Candidate Starts for ThreeOh3D2_61:

(Start: 1 @52752 has 1 MA's), (Start: 3 @52698 has 51 MA's), (Start: 4 @52686 has 206 MA's), (5, 52659), (Start: 7 @52641 has 3 MA's), (12, 52554), (18, 52473), (22, 52311), (24, 52299), (26, 52272), (33, 52149),

Gene: Thunderbird_59 Start: 52419, Stop: 51910, Start Num: 4

Candidate Starts for Thunderbird_59:

(Start: 1 @52485 has 1 MA's), (Start: 3 @52431 has 51 MA's), (Start: 4 @52419 has 206 MA's), (5, 52392), (Start: 7 @52374 has 3 MA's), (12, 52287), (22, 52101), (24, 52089), (26, 52062), (33, 51939),

Gene: Timmi_58 Start: 52168, Stop: 51599, Start Num: 4

Candidate Starts for Timmi_58:

(Start: 1 @52234 has 1 MA's), (Start: 3 @52180 has 51 MA's), (Start: 4 @52168 has 206 MA's), (5, 52141), (Start: 7 @52123 has 3 MA's), (12, 52036), (18, 51955), (22, 51793), (24, 51781), (26, 51754), (33, 51631),

Gene: TomBombadil_59 Start: 52453, Stop: 51884, Start Num: 4

Candidate Starts for TomBombadil_59:

(Start: 1 @52519 has 1 MA's), (Start: 3 @52465 has 51 MA's), (Start: 4 @52453 has 206 MA's), (5, 52426), (Start: 7 @52408 has 3 MA's), (12, 52321), (18, 52240), (22, 52078), (24, 52066), (26, 52039), (33, 51916),

Gene: Toni_58 Start: 52091, Stop: 51561, Start Num: 3

Candidate Starts for Toni_58:

(Start: 3 @52091 has 51 MA's), (5, 52046), (Start: 7 @52028 has 3 MA's), (12, 51941), (22, 51755), (24, 51743), (26, 51716), (33, 51593),

Gene: TooFast2Furius_61 Start: 52446, Stop: 51823, Start Num: 3

Candidate Starts for TooFast2Furius_61:

(Start: 1 @52500 has 1 MA's), (Start: 3 @52446 has 51 MA's), (Start: 4 @52434 has 206 MA's), (5, 52407), (Start: 7 @52389 has 3 MA's), (10, 52335), (12, 52302), (13, 52269), (18, 52179), (22, 52017), (24, 52005), (26, 51978), (27, 51963), (33, 51855),

Gene: Tooj_58 Start: 51838, Stop: 51227, Start Num: 4

Candidate Starts for Tooj_58:

(Start: 1 @51904 has 1 MA's), (Start: 3 @51850 has 51 MA's), (Start: 4 @51838 has 206 MA's), (5, 51811), (Start: 7 @51793 has 3 MA's), (10, 51739), (12, 51706), (13, 51673), (18, 51583), (22, 51421), (24, 51409), (26, 51382), (27, 51367), (33, 51259), (34, 51244),

Gene: Triad_61 Start: 51635, Stop: 51015, Start Num: 3

Candidate Starts for Triad_61:

(Start: 1 @51689 has 1 MA's), (Start: 3 @51635 has 51 MA's), (Start: 4 @51623 has 206 MA's), (5, 51596), (Start: 7 @51578 has 3 MA's), (10, 51524), (12, 51491), (13, 51458), (18, 51368), (22, 51206), (24, 51194), (26, 51167), (27, 51152), (33, 51044),

Gene: True_58 Start: 52178, Stop: 51567, Start Num: 4

Candidate Starts for True_58:

(Start: 1 @52244 has 1 MA's), (Start: 3 @52190 has 51 MA's), (Start: 4 @52178 has 206 MA's), (5, 52151), (Start: 7 @52133 has 3 MA's), (10, 52079), (12, 52046), (13, 52013), (18, 51923), (22, 51761), (24, 51749), (26, 51722), (33, 51599),

Gene: Trypo_62 Start: 52850, Stop: 52341, Start Num: 4

Candidate Starts for Trypo_62:

(Start: 1 @52916 has 1 MA's), (Start: 3 @52862 has 51 MA's), (Start: 4 @52850 has 206 MA's), (5, 52823), (Start: 7 @52805 has 3 MA's), (12, 52718), (22, 52532), (24, 52520), (26, 52493), (33, 52370),

Gene: TyrionL_60 Start: 52275, Stop: 51766, Start Num: 4

Candidate Starts for TyrionL_60:

(Start: 1 @52341 has 1 MA's), (Start: 3 @52287 has 51 MA's), (Start: 4 @52275 has 206 MA's), (5, 52248), (Start: 7 @52230 has 3 MA's), (12, 52143), (22, 51957), (24, 51945), (26, 51918), (33, 51795),

Gene: UAch1_59 Start: 52409, Stop: 51843, Start Num: 4

Candidate Starts for UAch1_59:

(Start: 1 @52475 has 1 MA's), (Start: 3 @52421 has 51 MA's), (Start: 4 @52409 has 206 MA's), (5, 52382), (Start: 7 @52364 has 3 MA's), (12, 52277), (18, 52196), (22, 52034), (24, 52022), (26, 51995), (27, 51980), (33, 51872),

Gene: UncleHowie_58 Start: 51880, Stop: 51311, Start Num: 4

Candidate Starts for UncleHowie_58:

(Start: 1 @51946 has 1 MA's), (Start: 3 @51892 has 51 MA's), (Start: 4 @51880 has 206 MA's), (5, 51853), (Start: 7 @51835 has 3 MA's), (12, 51748), (18, 51667), (22, 51505), (24, 51493), (26, 51466), (33, 51343),

Gene: Usavi_59 Start: 52548, Stop: 51979, Start Num: 4

Candidate Starts for Usavi_59:

(Start: 1 @52614 has 1 MA's), (Start: 3 @52560 has 51 MA's), (Start: 4 @52548 has 206 MA's), (5, 52521), (Start: 7 @52503 has 3 MA's), (12, 52416), (18, 52335), (22, 52173), (24, 52161), (26, 52134), (33, 52011),

Gene: Vaishali24_58 Start: 52095, Stop: 51475, Start Num: 3

Candidate Starts for Vaishali24_58:

(Start: 1 @52149 has 1 MA's), (Start: 3 @52095 has 51 MA's), (Start: 4 @52083 has 206 MA's), (5, 52056), (Start: 7 @52038 has 3 MA's), (10, 51984), (12, 51951), (13, 51918), (18, 51828), (22, 51666), (24, 51654), (26, 51627), (27, 51612), (33, 51504),

Gene: Valjean_59 Start: 52405, Stop: 51794, Start Num: 4

Candidate Starts for Valjean_59:

(Start: 1 @52471 has 1 MA's), (Start: 3 @52417 has 51 MA's), (Start: 4 @52405 has 206 MA's), (5, 52378), (Start: 7 @52360 has 3 MA's), (10, 52306), (12, 52273), (13, 52240), (18, 52150), (22, 51988), (24, 51976), (26, 51949), (27, 51934), (33, 51826), (34, 51811),

Gene: Veritas_61 Start: 52543, Stop: 52034, Start Num: 4

Candidate Starts for Veritas_61:

(Start: 1 @52609 has 1 MA's), (Start: 3 @52555 has 51 MA's), (Start: 4 @52543 has 206 MA's), (5, 52516), (Start: 7 @52498 has 3 MA's), (12, 52411), (22, 52225), (24, 52213), (26, 52186), (33, 52063),

Gene: Virapocalypse_60 Start: 52504, Stop: 51893, Start Num: 4

Candidate Starts for Virapocalypse_60:

(Start: 1 @52570 has 1 MA's), (Start: 3 @52516 has 51 MA's), (Start: 4 @52504 has 206 MA's), (5, 52477), (Start: 7 @52459 has 3 MA's), (10, 52405), (12, 52372), (13, 52339), (18, 52249), (22, 52087), (24, 52075), (26, 52048), (33, 51925),

Gene: Virgeve_59 Start: 52153, Stop: 51530, Start Num: 3

Candidate Starts for Virgeve_59:

(Start: 1 @52207 has 1 MA's), (Start: 3 @52153 has 51 MA's), (Start: 4 @52141 has 206 MA's), (5, 52114), (Start: 7 @52096 has 3 MA's), (10, 52042), (12, 52009), (13, 51976), (18, 51886), (22, 51724), (24, 51712), (26, 51685), (33, 51562),

Gene: Vista_59 Start: 52181, Stop: 51612, Start Num: 4

Candidate Starts for Vista_59:

(Start: 1 @52247 has 1 MA's), (Start: 3 @52193 has 51 MA's), (Start: 4 @52181 has 206 MA's), (5, 52154), (Start: 7 @52136 has 3 MA's), (12, 52049), (18, 51968), (22, 51806), (24, 51794), (26, 51767), (33, 51644),

Gene: Vivaldi_61 Start: 52639, Stop: 52073, Start Num: 4

Candidate Starts for Vivaldi_61:

(Start: 1 @52705 has 1 MA's), (Start: 3 @52651 has 51 MA's), (Start: 4 @52639 has 206 MA's), (5, 52612), (Start: 7 @52594 has 3 MA's), (10, 52540), (Start: 11 @52531 has 1 MA's), (12, 52507), (18, 52426), (22, 52264), (24, 52252), (26, 52225), (27, 52210), (33, 52102),

Gene: Vortex_59 Start: 52163, Stop: 51594, Start Num: 4

Candidate Starts for Vortex_59:

(Start: 1 @52229 has 1 MA's), (Start: 3 @52175 has 51 MA's), (Start: 4 @52163 has 206 MA's), (5, 52136), (Start: 7 @52118 has 3 MA's), (12, 52031), (18, 51950), (22, 51788), (24, 51776), (26, 51749), (33, 51626),

Gene: Wallhey_60 Start: 52279, Stop: 51770, Start Num: 4

Candidate Starts for Wallhey_60:

(Start: 1 @52345 has 1 MA's), (Start: 3 @52291 has 51 MA's), (Start: 4 @52279 has 206 MA's), (5, 52252), (Start: 7 @52234 has 3 MA's), (12, 52147), (22, 51961), (24, 51949), (26, 51922), (33, 51799),

Gene: Waterdiva_59 Start: 52542, Stop: 51973, Start Num: 4

Candidate Starts for Waterdiva_59:

(Start: 1 @52608 has 1 MA's), (Start: 3 @52554 has 51 MA's), (Start: 4 @52542 has 206 MA's), (5, 52515), (Start: 7 @52497 has 3 MA's), (12, 52410), (18, 52329), (22, 52167), (24, 52155), (26, 52128), (33, 52005),

Gene: Weher20_59 Start: 52985, Stop: 52416, Start Num: 4

Candidate Starts for Weher20_59:

(Start: 1 @53051 has 1 MA's), (Start: 3 @52997 has 51 MA's), (Start: 4 @52985 has 206 MA's), (5, 52958), (Start: 7 @52940 has 3 MA's), (12, 52853), (18, 52772), (22, 52610), (24, 52598), (26, 52571), (27, 52556), (33, 52448),

Gene: Windsor_59 Start: 52728, Stop: 52117, Start Num: 4

Candidate Starts for Windsor_59:

(Start: 1 @52794 has 1 MA's), (Start: 3 @52740 has 51 MA's), (Start: 4 @52728 has 206 MA's), (5, 52701), (Start: 7 @52683 has 3 MA's), (10, 52629), (Start: 11 @52620 has 1 MA's), (12, 52596), (13, 52563), (18, 52473), (22, 52311), (24, 52299), (26, 52272), (33, 52149),

Gene: Xavier_58 Start: 52170, Stop: 51601, Start Num: 4

Candidate Starts for Xavier_58:

(Start: 1 @52236 has 1 MA's), (Start: 3 @52182 has 51 MA's), (Start: 4 @52170 has 206 MA's), (5, 52143), (Start: 7 @52125 has 3 MA's), (12, 52038), (18, 51957), (22, 51795), (24, 51783), (26, 51756), (33, 51633),

Gene: Yoshand_61 Start: 52456, Stop: 51890, Start Num: 4

Candidate Starts for Yoshand_61:

(Start: 1 @52522 has 1 MA's), (Start: 3 @52468 has 51 MA's), (Start: 4 @52456 has 206 MA's), (5, 52429), (Start: 7 @52411 has 3 MA's), (10, 52357), (Start: 11 @52348 has 1 MA's), (12, 52324), (18, 52243), (22, 52081), (24, 52069), (26, 52042), (27, 52027), (33, 51919),

Gene: YouGoGlencoco_60 Start: 52474, Stop: 51896, Start Num: 1

Candidate Starts for YouGoGlencoco_60:

(Start: 1 @52474 has 1 MA's), (Start: 3 @52420 has 51 MA's), (Start: 4 @52408 has 206 MA's), (5, 52381), (Start: 7 @52363 has 3 MA's), (Start: 11 @52300 has 1 MA's), (12, 52276), (22, 52090), (24, 52078), (26, 52051), (33, 51928),

Gene: Zaider_60 Start: 52649, Stop: 52038, Start Num: 4

Candidate Starts for Zaider_60:

(Start: 1 @52715 has 1 MA's), (Start: 3 @52661 has 51 MA's), (Start: 4 @52649 has 206 MA's), (5, 52622), (Start: 7 @52604 has 3 MA's), (10, 52550), (12, 52517), (13, 52484), (18, 52394), (22, 52232), (24, 52220), (26, 52193), (27, 52178), (33, 52070), (34, 52055),

Gene: Zelda_60 Start: 52810, Stop: 52241, Start Num: 4

Candidate Starts for Zelda_60:

(Start: 1 @52876 has 1 MA's), (Start: 3 @52822 has 51 MA's), (Start: 4 @52810 has 206 MA's), (5, 52783), (Start: 7 @52765 has 3 MA's), (12, 52678), (18, 52597), (22, 52435), (24, 52423), (26, 52396), (33, 52273),

Gene: Zonia_61 Start: 52730, Stop: 52221, Start Num: 4

Candidate Starts for Zonia_61:

(Start: 1 @52796 has 1 MA's), (Start: 3 @52742 has 51 MA's), (Start: 4 @52730 has 206 MA's), (5, 52703), (Start: 7 @52685 has 3 MA's), (12, 52598), (22, 52412), (24, 52400), (26, 52373), (33, 52250),