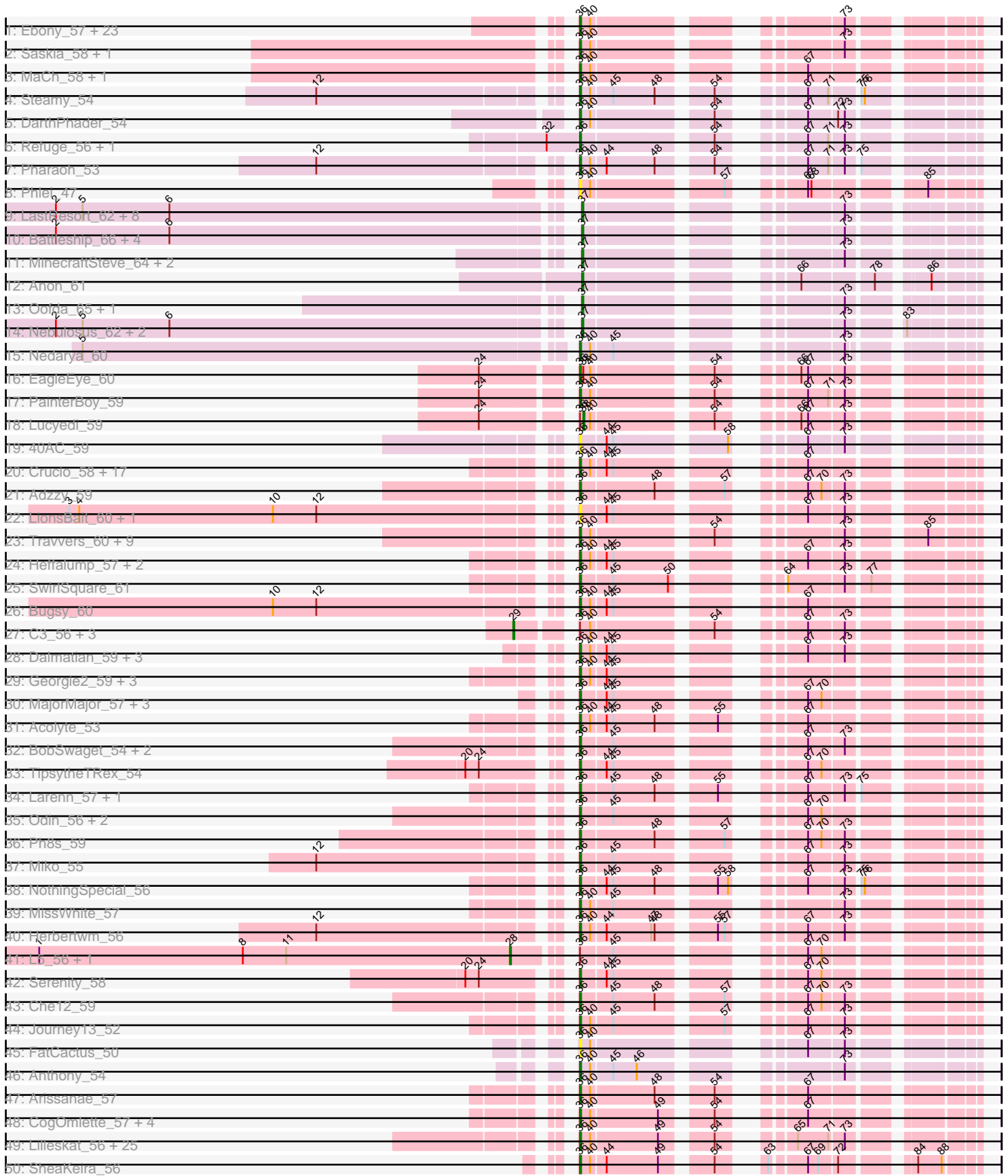
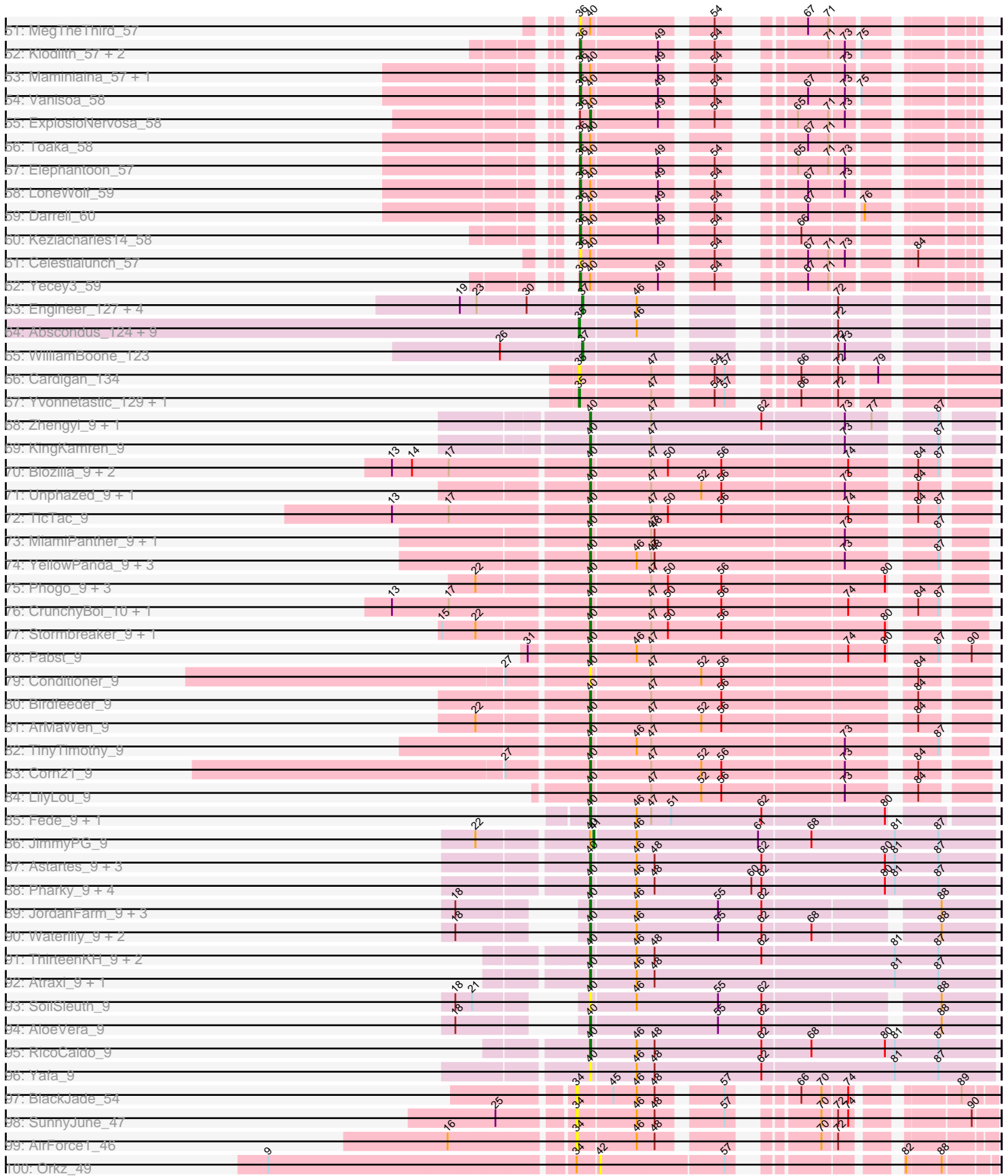


Pham 294381



Pham 294381



Note: Tracks are now grouped by subcluster and scaled. Switching in subcluster is indicated by changes in track color. Track scale is now set by default to display the region 30 bp upstream of start 1 to 30 bp downstream of the last possible start. If this default region is judged to be packed too tightly with annotated starts, the track will be further scaled to only show that region of the ORF with annotated starts. This action will be indicated by adding "Zoomed" to the title. For starts, yellow indicates the location of called starts comprised solely of Glimmer/GeneMark auto-annotations, green indicates the location of called starts with at least 1 manual gene annotation.

Pham 294381 Report

This analysis was run 04/18/26 on database version 643.

Pham number 294381 has 287 members, 59 are drafts.

Phages represented in each track:

- Track 1 : Ebony_57, Kimba_57, Bud_57, Mulciber_57, Snape_57, Salz_56, Fibonacci_57, Munch_58, Gilberta_58, Orange_57, Bowtie_58, Hutc2_57, Wolpertinger_56, Insomnia_58, Jabith_58, Timothy_57, TinyTimmy_57, Aneem_58, Flaverint_58, Joselito_58, Lucivia_58, Petersenfast_56, Et2Brutus_56, Sham4_57
- Track 2 : Saskia_58, Mabel_57
- Track 3 : MaCh_58, Bachome_59
- Track 4 : Steamy_54
- Track 5 : DarthPhader_54
- Track 6 : Refuge_56, Zimmer_55
- Track 7 : Pharaoh_53
- Track 8 : Phlei_47
- Track 9 : LastResort_62, Strosahl_64, Waits_64, Epsocamisio_61, ReMo_62, Rosalind_62, JSwag_63, Looper_63, Remus_64
- Track 10 : Battleship_66, DekHockey33_65, ShayRa_64, Soups_64, Switzerland_63
- Track 11 : MinecraftSteve_64, Ravana_67, KatherineG_64
- Track 12 : Anon_61
- Track 13 : Oofda_65, Warrior24_66
- Track 14 : Nebulosus_62, Anaysia_64, Boohoo_64
- Track 15 : Nedarya_60
- Track 16 : EagleEye_60
- Track 17 : PainterBoy_59
- Track 18 : Lucyedi_59
- Track 19 : 40AC_59
- Track 20 : Crucio_58, Benvolio_55, ChipMunk_60, EvilGenius_60, FiringLine_58, Echild_58, Dignity_60, Whabigail7_59, Power_57, SnapTap_58, Leviathan_60, KingCyrus_60, Smeagan_61, QueenBeesly_58, Jerm_60, SemperFi_59, LilTurb_59, Agape74_60
- Track 21 : Adzzy_59
- Track 22 : LionsBait_60, HippoHollow_58
- Track 23 : Travvers_60, Pomar16_60, D29_56, D32_59, Kerberos_60, DBQu4n_60, Tomathan_60, Naji_60, Duplo_60, StarStuff_60
- Track 24 : Heffalump_57, Fameo_58, QueenB2_57
- Track 25 : SwirlSquare_61
- Track 26 : Bugsy_60
- Track 27 : C3_56, AN9_61, VC3_61, ANI8_61
- Track 28 : Dalmatian_59, DudeLittle_57, Anselm_59, Retro23_59
- Track 29 : Georgie2_59, AbbyPaige_60, SweetiePie_58, Turbido_59

- Track 30 : MajorMajor_57, Jsquared_56, Bradman_57, Quokka_56
- Track 31 : Acolyte_53
- Track 32 : BobSwaget_54, Rachaly_57, Lokk_55
- Track 33 : TipsytheTRex_54
- Track 34 : Larenn_57, Malec_58
- Track 35 : Odin_56, Superchunk_56, Caraxes_58
- Track 36 : Ph8s_59
- Track 37 : Miko_55
- Track 38 : NothingSpecial_56
- Track 39 : MissWhite_57
- Track 40 : Herbertwm_56
- Track 41 : L5_56, Koduck_59
- Track 42 : Serenity_58
- Track 43 : Che12_59
- Track 44 : Journey13_52
- Track 45 : FatCactus_50
- Track 46 : Anthony_54
- Track 47 : Arissanae_57
- Track 48 : CogOmlette_57, Rahalelujah_58, WorldCup_57, Bellris_57, Minispark_57
- Track 49 : Lilleskat_56, Spouty_58, Pioneer_58, Priya_58, Phaeder_58, EmyBug_57, Sachima_55, RyeScarlet_59, Eidsmoe_58, Myxus_58, HortumSL17_58, Beemo_58, Jiawan_56, Aliter_58, Ugenie5_55, PackMan_57, Qobbit_58, Onglai_56, Scherzo_58, Ayanochan_59, Conquerage_58, Alma_58, Fayely_58, Phonnegut_58, Catalina_59, Tubs_58
- Track 50 : SheaKeira_56
- Track 51 : MegTheThird_57
- Track 52 : Klodlith_57, Charm_56, DreamTeam1_56
- Track 53 : Maminiaina_57, BogosyJay_57
- Track 54 : Vanisoa_58
- Track 55 : ExplosioNervosa_58
- Track 56 : Toaka_58
- Track 57 : Elephantoon_57
- Track 58 : LoneWolf_59
- Track 59 : Darrell_60
- Track 60 : Keziacharles14_58
- Track 61 : Celestialunch_57
- Track 62 : Yecey3_59
- Track 63 : Engineer_127, Toniann_125, Cucurbita_126, PhinkBoden_125, Bachita_128
- Track 64 : Abscondus_124, ClubL_125, Dusty_122, Geeche_123, Culver_125, Lozinak_125, Norvs_124, Miskis_120, Smoothie_126, Aphelion_125
- Track 65 : WilliamBoone_123
- Track 66 : Cardigan_134
- Track 67 : Yvonnetastic_129, JonJames_133
- Track 68 : Zhengyi_9, EugeneKrabs_9
- Track 69 : KingKamren_9
- Track 70 : Biozilla_9, HitchHiker_10, Oatly_9
- Track 71 : Unphazed_9, DumpQuist_9
- Track 72 : TicTac_9
- Track 73 : MiamiPanther_9, JessellCookie_9
- Track 74 : YellowPanda_9, Salvatore2000_9, Wesak_9, Sorvannah_9
- Track 75 : Phogo_9, SwissCheezer_9, Xitlalli_9, Dashyla_9
- Track 76 : CrunchyBoi_10, PineapplePluto_10

- Track 77 : Stormbreaker_9, Alex44_9
- Track 78 : Pabst_9
- Track 79 : Conditioner_9
- Track 80 : Birdfeeder_9
- Track 81 : ArMaWen_9
- Track 82 : TinyTimothy_9
- Track 83 : Corn21_9
- Track 84 : LilyLou_9
- Track 85 : Fede_9, Kosier_9
- Track 86 : JimmyPG_9
- Track 87 : Astartes_9, PhriedRice_9, Moleficent_9, Keough_9
- Track 88 : Pharky_9, Phedro_9, Fullmetal_9, StagePhright_9, Phracted_9
- Track 89 : JordanFarm_9, Truong_9, ShyRosie_9, Barroma_9
- Track 90 : Waterlily_9, Akoni_9, Ashton_9
- Track 91 : ThirteenKH_9, TrippleS_9, Mazun_9
- Track 92 : Atraxi_9, Morrill_9
- Track 93 : SoilSleuth_9
- Track 94 : AloeVera_9
- Track 95 : RicoCaldo_9
- Track 96 : Yafa_9
- Track 97 : BlackJade_54
- Track 98 : SunnyJune_47
- Track 99 : AirForce1_46
- Track 100 : Orkz_49
- Track 101 : GoldDust_40, Gooberta_40
- Track 102 : Music_39, Vibaki_39
- Track 103 : Jinkies_45
- Track 104 : Hirko_38
- Track 105 : Divya_49
- Track 106 : Vitus_40
- Track 107 : ChamoyPickle_3, AnnabelLee_3, Neuville_3, Gerri43_3, CardboardBox_3, Roberts_3, ChipsNGuac_3
- Track 108 : LastNadiia_6
- Track 109 : Makima_4
- Track 110 : TripleC_6
- Track 111 : Audell_6
- Track 112 : Agamoto_5
- Track 113 : Studio_2
- Track 114 : Ezurina_2

Summary of Final Annotations (See graph section above for start numbers):

The start number called the most often in the published annotations is 36, it was called in 126 of the 228 non-draft genes in the pham.

Genes that call this "Most Annotated" start:

- 40AC_59, AbbyPaige_60, Acolyte_53, Adzzy_59, Agape74_60, Aliter_58, Alma_58, Aneem_58, Anselm_59, Anthony_54, Arissanae_57, Ayanochan_59, Bachome_59, Beemo_58, Bellris_57, Benvolio_55, BobSwaget_54, BogosyJay_57, Bowtie_58, Bradman_57, Bud_57, Bugsy_60, Caraxes_58, Catalina_59, Celestiallunch_57,

Charm_56, Che12_59, ChipMunk_60, CogOmlette_57, Conquerage_58, Crucio_58, D29_56, D32_59, DBQu4n_60, Dalmatian_59, Darrell_60, DarthPhader_54, Dignity_60, DreamTeam1_56, DudeLittle_57, Duplo_60, EagleEye_60, Ebony_57, Echild_58, Eidsmoe_58, Elephantoon_57, EmyBug_57, Et2Brutus_56, EvilGenius_60, Fameo_58, FatCactus_50, Fayely_58, Fibonacci_57, FiringLine_58, Flaverint_58, Georgie2_59, Gilberta_58, Heffalump_57, Herbertwm_56, HippoHollow_58, HortumSL17_58, Hutc2_57, Insomnia_58, Jabith_58, Jerm_60, Jiawan_56, Joselito_58, Journey13_52, Jsquared_56, Kerberos_60, Keziacharles14_58, Kimba_57, KingCyrus_60, Klodlith_57, Larenn_57, Leviathan_60, LilTurb_59, Lilleskat_56, LionsBait_60, Lokk_55, LoneWolf_59, Lucivia_58, MaCh_58, Mabel_57, MajorMajor_57, Malec_58, Maminaiaina_57, MegTheThird_57, Miko_55, Minispark_57, MissWhite_57, Mulciber_57, Munch_58, Myxus_58, Naji_60, Nedarya_60, NothingSpecial_56, Odin_56, Onglai_56, Orange_57, PackMan_57, PainterBoy_59, Petersenfast_56, Ph8s_59, Phaeder_58, Pharaoh_53, Phlei_47, Phonnegut_58, Pioneer_58, Pomar16_60, Power_57, Priya_58, Qobbit_58, QueenB2_57, QueenBeesly_58, Quokka_56, Rachaly_57, Rahalelujah_58, Refuge_56, Retro23_59, RyeScarlet_59, Sachima_55, Salz_56, Saskia_58, Scherzo_58, SemperFi_59, Serenity_58, Sham4_57, SheaKeira_56, Smeagan_61, SnapTap_58, Snape_57, Spouty_58, StarStuff_60, Steamy_54, Superchunk_56, SweetiePie_58, SwirlSquare_61, Timothy_57, TinyTimmy_57, TipsytheTRex_54, Toaka_58, Tomathan_60, Travvers_60, Tubs_58, Turbido_59, Ugenie5_55, Vanisoa_58, Whabigail7_59, Wolpertinger_56, WorldCup_57, Yecey3_59, Zimmer_55,

Genes that have the "Most Annotated" start but do not call it:

- AN9_61, ANI8_61, C3_56, ExplosioNervosa_58, Koduck_59, L5_56, Lucyedi_59, VC3_61,

Genes that do not have the "Most Annotated" start:

- Abscondus_124, Agamoto_5, AirForce1_46, Akoni_9, Alex44_9, AloeVera_9, Anaysia_64, AnnabelLee_3, Anon_61, Aphelion_125, ArMaWen_9, Ashton_9, Astartes_9, Atraxi_9, Audell_6, Bachita_128, Barroma_9, Battleship_66, Biozilla_9, Birdfeeder_9, BlackJade_54, Boohoo_64, CardboardBox_3, Cardigan_134, ChamoyPickle_3, ChipsNGuac_3, ClubL_125, Conditioner_9, Corn21_9, CrunchyBoi_10, Cucurbita_126, Culver_125, Dashyla_9, DekHockey33_65, Divya_49, DumpQuist_9, Dusty_122, Engineer_127, Epsocamisio_61, EugeneKrabs_9, Ezurina_2, Fede_9, Fullmetal_9, Geeche_123, Gerri43_3, GoldDust_40, Gooberta_40, Hirko_38, HitchHiker_10, JSwag_63, JessellCookie_9, JimmyPG_9, Jinkies_45, JonJames_133, JordanFarm_9, KatherineG_64, Keough_9, KingKamren_9, Kosier_9, LastNadiia_6, LastResort_62, LilyLou_9, Looper_63, Lozinak_125, Makima_4, Mazun_9, MiamiPanther_9, MinecraftSteve_64, Miskis_120, Moleficent_9, Morrill_9, Music_39, Nebulosus_62, Neuville_3, Norvs_124, Oatly_9, Oofda_65, Orkz_49, Pabst_9, Pharky_9, Phedro_9, PhinkBoden_125, Phogo_9, Phracted_9, PhriedRice_9, PineapplePluto_10, Ravana_67, ReMo_62, Remus_64, RicoCaldo_9, Roberts_3, Rosalind_62, Salvatore2000_9, ShayRa_64, ShyRosie_9, Smoothie_126, SoilSleuth_9, Sorvannah_9, Soups_64, StagePhright_9, Stormbreaker_9, Strosahl_64, Studio_2, SunnyJune_47, SwissCheezer_9, Switzerland_63, ThirteenKH_9, TicTac_9, TinyTimothy_9, Toniann_125, TripleC_6, TrippleS_9, Truong_9, Unphazed_9, Vibaki_39, Vitus_40, Waits_64, Warrior24_66, Waterlily_9, Wesak_9, WilliamBoone_123, Xitlalli_9, Yafa_9, YellowPanda_9, Yvonnetastic_129, Zhengyi_9,

Summary by start number:

Start 28:

- Found in 2 of 287 (0.7%) of genes in pham
- Manual Annotations of this start: 2 of 228
- Called 100.0% of time when present
- Phage (with cluster) where this start called: Koduck_59 (A2), L5_56 (A2),

Start 29:

- Found in 4 of 287 (1.4%) of genes in pham
- Manual Annotations of this start: 4 of 228
- Called 100.0% of time when present
- Phage (with cluster) where this start called: AN9_61 (A2), ANI8_61 (A2), C3_56 (A2), VC3_61 (A2),

Start 33:

- Found in 4 of 287 (1.4%) of genes in pham
- Manual Annotations of this start: 2 of 228
- Called 75.0% of time when present
- Phage (with cluster) where this start called: Music_39 (FL), Vibaki_39 (FL), Vitus_40 (FL),

Start 34:

- Found in 12 of 287 (4.2%) of genes in pham
- Manual Annotations of this start: 3 of 228
- Called 66.7% of time when present
- Phage (with cluster) where this start called: AirForce1_46 (FL), BlackJade_54 (FL), Divya_49 (FL), GoldDust_40 (FL), Gooberta_40 (FL), Hirko_38 (FL), Jinkies_45 (FL), SunnyJune_47 (FL),

Start 35:

- Found in 13 of 287 (4.5%) of genes in pham
- Manual Annotations of this start: 11 of 228
- Called 100.0% of time when present
- Phage (with cluster) where this start called: Abscondus_124 (CQ1), Aphelion_125 (CQ1), Cardigan_134 (DD), ClubL_125 (CQ1), Culver_125 (CQ1), Dusty_122 (CQ1), Geeche_123 (CQ1), JonJames_133 (DD), Lozinak_125 (CQ1), Miskis_120 (CQ1), Norvs_124 (CQ1), Smoothie_126 (CQ1), Yvonnetastic_129 (DD),

Start 36:

- Found in 161 of 287 (56.1%) of genes in pham
- Manual Annotations of this start: 126 of 228
- Called 95.0% of time when present
- Phage (with cluster) where this start called: 40AC_59 (A17), AbbyPaige_60 (A2), Acolyte_53 (A2), Adzzy_59 (A2), Agape74_60 (A2), Aliter_58 (A9), Alma_58 (A9), Aneem_58 (A11), Anselm_59 (A2), Anthony_54 (A20), Arissanae_57 (A9), Ayanochan_59 (A9), Bachome_59 (A11), Beemo_58 (A9), Bellris_57 (A9), Benvolio_55 (A2), BobSwaget_54 (A2), BogosyJay_57 (A9), Bowtie_58 (A11), Bradman_57 (A2), Bud_57 (A11), Buggy_60 (A2), Caraxes_58 (A2), Catalina_59 (A9), Celestiallunch_57 (A9), Charm_56 (A9), Che12_59 (A2), ChipMunk_60 (A2), CogOmlette_57 (A9), Conquerage_58 (A9), Crucio_58 (A2), D29_56 (A2), D32_59 (A2), DBQu4n_60 (A2), Dalmatian_59 (A2), Darrell_60 (A9), DarthPhader_54 (A12), Dignity_60 (A2), DreamTeam1_56 (A9), DudeLittle_57 (A2), Duplo_60 (A2), EagleEye_60 (A16), Ebony_57 (A11), Echild_58 (A2), Eidsmoe_58 (A9),

Elephantoon_57 (A9), EmyBug_57 (A9), Et2Brutus_56 (A11), EvilGenius_60 (A2), Fameo_58 (A2), FatCactus_50 (A20), Fayely_58 (A9), Fibonacci_57 (A11), FiringLine_58 (A2), Flaverint_58 (A11), Georgie2_59 (A2), Gilberta_58 (A11), Heffalump_57 (A2), Herbertwm_56 (A2), HippoHollow_58 (A2), HortumSL17_58 (A9), Hutc2_57 (A11), Insomnia_58 (A11), Jabith_58 (A11), Jerm_60 (A2), Jiawan_56 (A9), Joselito_58 (A11), Journey13_52 (A2), Jsquared_56 (A2), Kerberos_60 (A2), Keziacharles14_58 (A9), Kimba_57 (A11), KingCyrus_60 (A2), Klodlith_57 (A9), Larenn_57 (A2), Leviathan_60 (A2), LilTurb_59 (A2), Lilleskat_56 (A9), LionsBait_60 (A2), Lokk_55 (A2), LoneWolf_59 (A9), Lucivia_58 (A11), MaCh_58 (A11), Mabel_57 (A11), MajorMajor_57 (A2), Malec_58 (A2), Maminiaina_57 (A9), MegTheThird_57 (A9), Miko_55 (A2), Minispark_57 (A9), MissWhite_57 (A2), Mulciber_57 (A11), Munch_58 (A11), Myxus_58 (A9), Naji_60 (A2), Nedarya_60 (A15), NothingSpecial_56 (A2), Odin_56 (A2), Onglai_56 (A9), Orange_57 (A11), PackMan_57 (A9), PainterBoy_59 (A16), Petersenfast_56 (A11), Ph8s_59 (A2), Phaeder_58 (A9), Pharaoh_53 (A12), Phlei_47 (A13), Phonnegut_58 (A9), Pioneer_58 (A9), Pomar16_60 (A2), Power_57 (A2), Priya_58 (A9), Qobbit_58 (A9), QueenB2_57 (A2), QueenBeesly_58 (A2), Quokka_56 (A2), Rachaly_57 (A2), Rahalelujah_58 (A9), Refuge_56 (A12), Retro23_59 (A2), RyeScarlet_59 (A9), Sachima_55 (A9), Salz_56 (A11), Saskia_58 (A11), Scherzo_58 (A9), SemperFi_59 (A2), Serenity_58 (A2), Sham4_57 (A11), SheaKeira_56 (A9), Smeagan_61 (A2), SnapTap_58 (A2), Snape_57 (A11), Spouty_58 (A9), StarStuff_60 (A2), Steamy_54 (A12), Superchunk_56 (A2), SweetiePie_58 (A2), SwirlSquare_61 (A2), Timothy_57 (A11), TinyTimmy_57 (A11), TopsytheTRex_54 (A2), Toaka_58 (A9), Tomathan_60 (A2), Travvers_60 (A2), Tubs_58 (A9), Turbido_59 (A2), Ugenie5_55 (A9), Vanisoa_58 (A9), Whabigail7_59 (A2), Wolpertinger_56 (A11), WorldCup_57 (A9), Yecey3_59 (A9), Zimmer_55 (A12),

Start 37:

- Found in 29 of 287 (10.1%) of genes in pham
- Manual Annotations of this start: 28 of 228
- Called 100.0% of time when present
- Phage (with cluster) where this start called: Anaysia_64 (A15), Anon_61 (A15), Bachita_128 (CQ1), Battleship_66 (A15), Boohoo_64 (A15), Cucurbita_126 (CQ1), DekHockey33_65 (A15), Engineer_127 (CQ1), Epsocamisio_61 (A15), JSwag_63 (A15), KatherineG_64 (A15), LastResort_62 (A15), Looper_63 (A15), MinecraftSteve_64 (A15), Nebulosus_62 (A15), Oofda_65 (A15), PhinkBoden_125 (CQ1), Ravana_67 (A15), ReMo_62 (A15), Remus_64 (A15), Rosalind_62 (A15), ShayRa_64 (A15), Soups_64 (A15), Strosahl_64 (A15), Switzerland_63 (A15), Toniann_125 (CQ1), Waits_64 (A15), Warrior24_66 (A15), WilliamBoone_123 (CQ1),

Start 38:

- Found in 2 of 287 (0.7%) of genes in pham
- Manual Annotations of this start: 1 of 228
- Called 50.0% of time when present
- Phage (with cluster) where this start called: Lucyedi_59 (A16),

Start 39:

- Found in 2 of 287 (0.7%) of genes in pham
- No Manual Annotations of this start.
- Called 100.0% of time when present
- Phage (with cluster) where this start called: LastNadiia_6 (FR), Makima_4 (FR),

Start 40:

- Found in 198 of 287 (69.0%) of genes in pham
- Manual Annotations of this start: 49 of 228
- Called 33.8% of time when present
- Phage (with cluster) where this start called: Akoni_9 (EK2), Alex44_9 (EK1), AloeVera_9 (EK2), AnnabelLee_3 (FR), ArMaWen_9 (EK1), Ashton_9 (EK2), Astartes_9 (EK2), Atraxi_9 (EK2), Barroma_9 (EK2), Biozilla_9 (EK1), Birdfeeder_9 (EK1), CardboardBox_3 (FR), ChamoyPickle_3 (FR), ChipsNGuac_3 (FR), Conditioner_9 (EK1), Corn21_9 (EK1), CrunchyBoi_10 (EK1), Dashyla_9 (EK1), DumpQuist_9 (EK1), EugeneKrabs_9 (EK), ExplosioNervosa_58 (A9), Ezurina_2 (FR), Fede_9 (EK2), Fullmetal_9 (EK2), Gerri43_3 (FR), HitchHiker_10 (EK1), JessellCookie_9 (EK1), JordanFarm_9 (EK2), Keough_9 (EK2), KingKamren_9 (EK), Kosier_9 (EK2), LilyLou_9 (EK1), Mazun_9 (EK2), MiamiPanther_9 (EK1), Moleficent_9 (EK2), Morrill_9 (EK2), Neuville_3 (FR), Oatly_9 (EK1), Pabst_9 (EK1), Pharky_9 (EK2), Phedro_9 (EK2), Phogo_9 (EK1), Phracted_9 (EK2), PhriedRice_9 (EK2), PineapplePluto_10 (EK1), RicoCaldo_9 (EK2), Roberts_3 (FR), Salvatore2000_9 (EK1), ShyRosie_9 (EK2), SoilSleuth_9 (EK2), Sorvannah_9 (EK1), StagePhright_9 (EK2), Stormbreaker_9 (EK1), Studio_2 (FR), SwissCheezer_9 (EK1), ThirteenKH_9 (EK2), TicTac_9 (EK1), TinyTimothy_9 (EK1), TrippleS_9 (EK2), Truong_9 (EK2), Unphazed_9 (EK1), Waterlily_9 (EK2), Wesak_9 (EK1), Xitlalli_9 (EK1), Yafa_9 (EK2), YellowPanda_9 (EK1), Zhengyi_9 (EK),

Start 41:

- Found in 4 of 287 (1.4%) of genes in pham
- Manual Annotations of this start: 2 of 228
- Called 100.0% of time when present
- Phage (with cluster) where this start called: Agamoto_5 (FR), Audell_6 (FR), JimmyPG_9 (EK2), TripleC_6 (FR),

Start 42:

- Found in 3 of 287 (1.0%) of genes in pham
- No Manual Annotations of this start.
- Called 33.3% of time when present
- Phage (with cluster) where this start called: Orkz_49 (FL),

Summary by clusters:

There are 16 clusters represented in this pham: A15, A20, FR, A16, A11, A13, EK, A12, DD, A17, A2, A9, CQ1, FL, EK2, EK1,

Info for manual annotations of cluster A11:

- Start number 36 was manually annotated 24 times for cluster A11.

Info for manual annotations of cluster A12:

- Start number 36 was manually annotated 5 times for cluster A12.

Info for manual annotations of cluster A15:

- Start number 36 was manually annotated 1 time for cluster A15.
- Start number 37 was manually annotated 22 times for cluster A15.

Info for manual annotations of cluster A16:

- Start number 36 was manually annotated 2 times for cluster A16.
- Start number 38 was manually annotated 1 time for cluster A16.

Info for manual annotations of cluster A2:

- Start number 28 was manually annotated 2 times for cluster A2.
- Start number 29 was manually annotated 4 times for cluster A2.
- Start number 36 was manually annotated 59 times for cluster A2.

Info for manual annotations of cluster A20:

- Start number 36 was manually annotated 1 time for cluster A20.

Info for manual annotations of cluster A9:

- Start number 36 was manually annotated 34 times for cluster A9.
- Start number 40 was manually annotated 1 time for cluster A9.

Info for manual annotations of cluster CQ1:

- Start number 35 was manually annotated 9 times for cluster CQ1.
- Start number 37 was manually annotated 6 times for cluster CQ1.

Info for manual annotations of cluster DD:

- Start number 35 was manually annotated 2 times for cluster DD.

Info for manual annotations of cluster EK:

- Start number 40 was manually annotated 3 times for cluster EK.

Info for manual annotations of cluster EK1:

- Start number 40 was manually annotated 22 times for cluster EK1.

Info for manual annotations of cluster EK2:

- Start number 40 was manually annotated 22 times for cluster EK2.
- Start number 41 was manually annotated 1 time for cluster EK2.

Info for manual annotations of cluster FL:

- Start number 33 was manually annotated 2 times for cluster FL.
- Start number 34 was manually annotated 3 times for cluster FL.

Info for manual annotations of cluster FR:

- Start number 40 was manually annotated 1 time for cluster FR.
- Start number 41 was manually annotated 1 time for cluster FR.

Gene Information:

Gene: 40AC_59 Start: 39531, Stop: 39259, Start Num: 36

Candidate Starts for 40AC_59:

(Start: 36 @39531 has 126 MA's), (44, 39510), (45, 39504), (58, 39417), (67, 39381), (73, 39351),

Gene: AN9_61 Start: 38705, Stop: 38394, Start Num: 29

Candidate Starts for AN9_61:

(Start: 29 @38705 has 4 MA's), (Start: 36 @38666 has 126 MA's), (Start: 40 @38657 has 49 MA's), (54, 38564), (67, 38516), (73, 38486),

Gene: ANI8_61 Start: 38705, Stop: 38394, Start Num: 29

Candidate Starts for ANI8_61:

(Start: 29 @38705 has 4 MA's), (Start: 36 @38666 has 126 MA's), (Start: 40 @38657 has 49 MA's), (54, 38564), (67, 38516), (73, 38486),

Gene: AbbyPaige_60 Start: 38775, Stop: 38503, Start Num: 36

Candidate Starts for AbbyPaige_60:

(Start: 36 @38775 has 126 MA's), (Start: 40 @38766 has 49 MA's), (44, 38754), (45, 38748),

Gene: Abscondus_124 Start: 70975, Stop: 71268, Start Num: 35

Candidate Starts for Abscondus_124:

(Start: 35 @70975 has 11 MA's), (46, 71023), (72, 71152),

Gene: Acolyte_53 Start: 37597, Stop: 37325, Start Num: 36

Candidate Starts for Acolyte_53:

(Start: 36 @37597 has 126 MA's), (Start: 40 @37588 has 49 MA's), (44, 37576), (45, 37570), (48, 37534), (55, 37492), (67, 37447),

Gene: Adzzy_59 Start: 37247, Stop: 36975, Start Num: 36

Candidate Starts for Adzzy_59:

(Start: 36 @37247 has 126 MA's), (48, 37184), (57, 37136), (67, 37097), (70, 37085), (73, 37067),

Gene: Agamoto_5 Start: 4114, Stop: 4374, Start Num: 41

Candidate Starts for Agamoto_5:

(Start: 41 @4114 has 2 MA's), (42, 4117),

Gene: Agape74_60 Start: 38769, Stop: 38497, Start Num: 36

Candidate Starts for Agape74_60:

(Start: 36 @38769 has 126 MA's), (Start: 40 @38760 has 49 MA's), (44, 38748), (45, 38742), (67, 38619),

Gene: AirForce1_46 Start: 33134, Stop: 33424, Start Num: 34

Candidate Starts for AirForce1_46:

(16, 33035), (Start: 34 @33134 has 3 MA's), (46, 33185), (48, 33200), (70, 33302), (72, 33314),

Gene: Akoni_9 Start: 6089, Stop: 5751, Start Num: 40

Candidate Starts for Akoni_9:

(18, 6161), (Start: 40 @6089 has 49 MA's), (46, 6050), (55, 5978), (62, 5939), (68, 5897), (88, 5798),

Gene: Alex44_9 Start: 6356, Stop: 6036, Start Num: 40

Candidate Starts for Alex44_9:

(15, 6476), (22, 6446), (Start: 40 @6356 has 49 MA's), (47, 6305), (50, 6290), (56, 6242), (80, 6101),

Gene: Aliter_58 Start: 38153, Stop: 37881, Start Num: 36

Candidate Starts for Aliter_58:

(Start: 36 @38153 has 126 MA's), (Start: 40 @38144 has 49 MA's), (49, 38087), (54, 38051), (65, 38012), (71, 37985), (73, 37973),

Gene: Alma_58 Start: 38528, Stop: 38256, Start Num: 36

Candidate Starts for Alma_58:

(Start: 36 @38528 has 126 MA's), (Start: 40 @38519 has 49 MA's), (49, 38462), (54, 38426), (65, 38387), (71, 38360), (73, 38348),

Gene: AloeVera_9 Start: 6089, Stop: 5751, Start Num: 40

Candidate Starts for AloeVera_9:

(18, 6161), (Start: 40 @6089 has 49 MA's), (55, 5978), (62, 5939), (88, 5798),

Gene: Anaysia_64 Start: 37667, Stop: 37398, Start Num: 37

Candidate Starts for Anaysia_64:

(2, 38111), (5, 38087), (6, 38009), (Start: 37 @37667 has 28 MA's), (73, 37490), (83, 37451),

Gene: Aneem_58 Start: 37786, Stop: 37514, Start Num: 36

Candidate Starts for Aneem_58:

(Start: 36 @37786 has 126 MA's), (Start: 40 @37777 has 49 MA's), (73, 37606),

Gene: AnnabelLee_3 Start: 977, Stop: 1246, Start Num: 40

Candidate Starts for AnnabelLee_3:

(Start: 40 @977 has 49 MA's),

Gene: Anon_61 Start: 37216, Stop: 36947, Start Num: 37

Candidate Starts for Anon_61:

(Start: 37 @37216 has 28 MA's), (66, 37075), (78, 37018), (86, 36982),

Gene: Anselm_59 Start: 38676, Stop: 38404, Start Num: 36

Candidate Starts for Anselm_59:

(Start: 36 @38676 has 126 MA's), (Start: 40 @38667 has 49 MA's), (44, 38655), (45, 38649), (67, 38526), (73, 38496),

Gene: Anthony_54 Start: 36233, Stop: 35961, Start Num: 36

Candidate Starts for Anthony_54:

(Start: 36 @36233 has 126 MA's), (Start: 40 @36224 has 49 MA's), (45, 36206), (46, 36185), (73, 36053),

Gene: Aphelion_125 Start: 72038, Stop: 72331, Start Num: 35

Candidate Starts for Aphelion_125:

(Start: 35 @72038 has 11 MA's), (46, 72086), (72, 72215),

Gene: ArMaWen_9 Start: 6356, Stop: 6033, Start Num: 40

Candidate Starts for ArMaWen_9:

(22, 6446), (Start: 40 @6356 has 49 MA's), (47, 6305), (52, 6260), (56, 6242), (84, 6086),

Gene: Arissanae_57 Start: 38844, Stop: 38572, Start Num: 36

Candidate Starts for Arissanae_57:

(Start: 36 @38844 has 126 MA's), (Start: 40 @38835 has 49 MA's), (48, 38781), (54, 38742), (67, 38694),

Gene: Ashton_9 Start: 6093, Stop: 5755, Start Num: 40

Candidate Starts for Ashton_9:

(18, 6165), (Start: 40 @6093 has 49 MA's), (46, 6054), (55, 5982), (62, 5943), (68, 5901), (88, 5802),

Gene: Astartes_9 Start: 6131, Stop: 5775, Start Num: 40

Candidate Starts for Astartes_9:

(Start: 40 @6131 has 49 MA's), (46, 6092), (48, 6077), (62, 5981), (80, 5873), (81, 5864), (87, 5825),

Gene: Atraxi_9 Start: 6096, Stop: 5740, Start Num: 40

Candidate Starts for Atraxi_9:

(Start: 40 @6096 has 49 MA's), (46, 6057), (48, 6042), (81, 5829), (87, 5790),

Gene: Audell_6 Start: 4387, Stop: 4647, Start Num: 41

Candidate Starts for Audell_6:

(Start: 41 @4387 has 2 MA's), (54, 4477), (70, 4534),

Gene: Ayanochan_59 Start: 38311, Stop: 38039, Start Num: 36

Candidate Starts for Ayanochan_59:

(Start: 36 @38311 has 126 MA's), (Start: 40 @38302 has 49 MA's), (49, 38245), (54, 38209), (65, 38170), (71, 38143), (73, 38131),

Gene: Bachita_128 Start: 71997, Stop: 72287, Start Num: 37

Candidate Starts for Bachita_128:

(19, 71889), (23, 71904), (30, 71949), (Start: 37 @71997 has 28 MA's), (46, 72042), (72, 72171),

Gene: Bachome_59 Start: 37766, Stop: 37494, Start Num: 36

Candidate Starts for Bachome_59:

(Start: 36 @37766 has 126 MA's), (Start: 40 @37757 has 49 MA's), (67, 37616),

Gene: Barroma_9 Start: 6089, Stop: 5751, Start Num: 40

Candidate Starts for Barroma_9:

(18, 6161), (Start: 40 @6089 has 49 MA's), (46, 6050), (55, 5978), (62, 5939), (88, 5798),

Gene: Battleship_66 Start: 37873, Stop: 37604, Start Num: 37

Candidate Starts for Battleship_66:

(2, 38317), (6, 38215), (Start: 37 @37873 has 28 MA's), (73, 37696),

Gene: Beemo_58 Start: 38323, Stop: 38051, Start Num: 36

Candidate Starts for Beemo_58:

(Start: 36 @38323 has 126 MA's), (Start: 40 @38314 has 49 MA's), (49, 38257), (54, 38221), (65, 38182), (71, 38155), (73, 38143),

Gene: Bellris_57 Start: 37989, Stop: 37717, Start Num: 36

Candidate Starts for Bellris_57:

(Start: 36 @37989 has 126 MA's), (Start: 40 @37980 has 49 MA's), (49, 37923), (54, 37887), (67, 37839),

Gene: Benvolio_55 Start: 37700, Stop: 37428, Start Num: 36

Candidate Starts for Benvolio_55:

(Start: 36 @37700 has 126 MA's), (Start: 40 @37691 has 49 MA's), (44, 37679), (45, 37673), (67, 37550),

Gene: Biozilla_9 Start: 6310, Stop: 5987, Start Num: 40

Candidate Starts for Biozilla_9:

(13, 6478), (14, 6460), (17, 6427), (Start: 40 @6310 has 49 MA's), (47, 6259), (50, 6244), (56, 6196), (74, 6088), (84, 6040), (87, 6022),

Gene: Birdfeeder_9 Start: 6368, Stop: 6045, Start Num: 40

Candidate Starts for Birdfeeder_9:

(Start: 40 @6368 has 49 MA's), (47, 6317), (56, 6254), (84, 6098),

Gene: BlackJade_54 Start: 34939, Stop: 35229, Start Num: 34

Candidate Starts for BlackJade_54:

(Start: 34 @34939 has 3 MA's), (45, 34969), (46, 34990), (48, 35005), (57, 35053), (66, 35089), (70, 35107), (74, 35128), (89, 35203),

Gene: BobSwaget_54 Start: 37176, Stop: 36904, Start Num: 36

Candidate Starts for BobSwaget_54:

(Start: 36 @37176 has 126 MA's), (45, 37149), (67, 37026), (73, 36996),

Gene: BogosyJay_57 Start: 38245, Stop: 37973, Start Num: 36

Candidate Starts for BogosyJay_57:

(Start: 36 @38245 has 126 MA's), (Start: 40 @38236 has 49 MA's), (49, 38179), (54, 38143), (73, 38065),

Gene: Boohoo_64 Start: 37667, Stop: 37398, Start Num: 37

Candidate Starts for Boohoo_64:

(2, 38111), (5, 38087), (6, 38009), (Start: 37 @37667 has 28 MA's), (73, 37490), (83, 37451),

Gene: Bowtie_58 Start: 37793, Stop: 37521, Start Num: 36

Candidate Starts for Bowtie_58:

(Start: 36 @37793 has 126 MA's), (Start: 40 @37784 has 49 MA's), (73, 37613),

Gene: Bradman_57 Start: 37421, Stop: 37149, Start Num: 36

Candidate Starts for Bradman_57:

(Start: 36 @37421 has 126 MA's), (44, 37400), (45, 37394), (67, 37271), (70, 37259),

Gene: Bud_57 Start: 37340, Stop: 37068, Start Num: 36

Candidate Starts for Bud_57:

(Start: 36 @37340 has 126 MA's), (Start: 40 @37331 has 49 MA's), (73, 37160),

Gene: Buggy_60 Start: 38826, Stop: 38554, Start Num: 36

Candidate Starts for Buggy_60:

(10, 39066), (12, 39027), (Start: 36 @38826 has 126 MA's), (Start: 40 @38817 has 49 MA's), (44, 38805), (45, 38799), (67, 38676),

Gene: C3_56 Start: 38705, Stop: 38394, Start Num: 29

Candidate Starts for C3_56:

(Start: 29 @38705 has 4 MA's), (Start: 36 @38666 has 126 MA's), (Start: 40 @38657 has 49 MA's), (54, 38564), (67, 38516), (73, 38486),

Gene: Caraxes_58 Start: 36944, Stop: 36672, Start Num: 36

Candidate Starts for Caraxes_58:

(Start: 36 @36944 has 126 MA's), (45, 36917), (67, 36794), (70, 36782),

Gene: CardboardBox_3 Start: 977, Stop: 1246, Start Num: 40

Candidate Starts for CardboardBox_3:

(Start: 40 @977 has 49 MA's),

Gene: Cardigan_134 Start: 76224, Stop: 76523, Start Num: 35

Candidate Starts for Cardigan_134:

(Start: 35 @76224 has 11 MA's), (47, 76284), (54, 76326), (57, 76335), (66, 76371), (72, 76401), (79, 76431),

Gene: Catalina_59 Start: 38226, Stop: 37954, Start Num: 36

Candidate Starts for Catalina_59:

(Start: 36 @38226 has 126 MA's), (Start: 40 @38217 has 49 MA's), (49, 38160), (54, 38124), (65, 38085), (71, 38058), (73, 38046),

Gene: Celestiallunch_57 Start: 38031, Stop: 37759, Start Num: 36

Candidate Starts for Celestiallunch_57:

(Start: 36 @38031 has 126 MA's), (Start: 40 @38022 has 49 MA's), (54, 37929), (67, 37881), (71, 37863), (73, 37851), (84, 37806),

Gene: ChamoyPickle_3 Start: 977, Stop: 1246, Start Num: 40

Candidate Starts for ChamoyPickle_3:

(Start: 40 @977 has 49 MA's),

Gene: Charm_56 Start: 38090, Stop: 37818, Start Num: 36

Candidate Starts for Charm_56:

(Start: 36 @38090 has 126 MA's), (49, 38024), (54, 37988), (71, 37922), (73, 37910), (75, 37901),

Gene: Che12_59 Start: 37385, Stop: 37113, Start Num: 36

Candidate Starts for Che12_59:

(Start: 36 @37385 has 126 MA's), (45, 37358), (48, 37322), (57, 37274), (67, 37235), (70, 37223), (73, 37205),

Gene: ChipMunk_60 Start: 40026, Stop: 39754, Start Num: 36

Candidate Starts for ChipMunk_60:

(Start: 36 @40026 has 126 MA's), (Start: 40 @40017 has 49 MA's), (44, 40005), (45, 39999), (67, 39876),

Gene: ChipsNGuac_3 Start: 977, Stop: 1246, Start Num: 40

Candidate Starts for ChipsNGuac_3:

(Start: 40 @977 has 49 MA's),

Gene: ClubL_125 Start: 70565, Stop: 70858, Start Num: 35

Candidate Starts for ClubL_125:

(Start: 35 @70565 has 11 MA's), (46, 70613), (72, 70742),

Gene: CogOmlette_57 Start: 37986, Stop: 37714, Start Num: 36

Candidate Starts for CogOmlette_57:

(Start: 36 @37986 has 126 MA's), (Start: 40 @37977 has 49 MA's), (49, 37920), (54, 37884), (67, 37836),

Gene: Conditioner_9 Start: 6356, Stop: 6033, Start Num: 40

Candidate Starts for Conditioner_9:

(27, 6422), (Start: 40 @6356 has 49 MA's), (47, 6305), (52, 6260), (56, 6242), (84, 6086),

Gene: Conquerage_58 Start: 38297, Stop: 38025, Start Num: 36

Candidate Starts for Conquerage_58:

(Start: 36 @38297 has 126 MA's), (Start: 40 @38288 has 49 MA's), (49, 38231), (54, 38195), (65, 38156), (71, 38129), (73, 38117),

Gene: Corn21_9 Start: 6384, Stop: 6061, Start Num: 40

Candidate Starts for Corn21_9:

(27, 6450), (Start: 40 @6384 has 49 MA's), (47, 6333), (52, 6288), (56, 6270), (73, 6165), (84, 6114),

Gene: Crucio_58 Start: 38443, Stop: 38171, Start Num: 36

Candidate Starts for Crucio_58:

(Start: 36 @38443 has 126 MA's), (Start: 40 @38434 has 49 MA's), (44, 38422), (45, 38416), (67, 38293),

Gene: CrunchyBoi_10 Start: 6445, Stop: 6122, Start Num: 40

Candidate Starts for CrunchyBoi_10:

(13, 6613), (17, 6562), (Start: 40 @6445 has 49 MA's), (47, 6394), (50, 6379), (56, 6331), (74, 6223), (84, 6175), (87, 6157),

Gene: Cucurbita_126 Start: 72310, Stop: 72600, Start Num: 37

Candidate Starts for Cucurbita_126:

(19, 72202), (23, 72217), (30, 72262), (Start: 37 @72310 has 28 MA's), (46, 72355), (72, 72484),

Gene: Culver_125 Start: 70325, Stop: 70618, Start Num: 35

Candidate Starts for Culver_125:

(Start: 35 @70325 has 11 MA's), (46, 70373), (72, 70502),

Gene: D29_56 Start: 38269, Stop: 37997, Start Num: 36

Candidate Starts for D29_56:

(Start: 36 @38269 has 126 MA's), (Start: 40 @38260 has 49 MA's), (54, 38167), (73, 38089), (85, 38035),

Gene: D32_59 Start: 38269, Stop: 37997, Start Num: 36

Candidate Starts for D32_59:

(Start: 36 @38269 has 126 MA's), (Start: 40 @38260 has 49 MA's), (54, 38167), (73, 38089), (85, 38035),

Gene: DBQu4n_60 Start: 38250, Stop: 37978, Start Num: 36

Candidate Starts for DBQu4n_60:

(Start: 36 @38250 has 126 MA's), (Start: 40 @38241 has 49 MA's), (54, 38148), (73, 38070), (85, 38016),

Gene: Dalmatian_59 Start: 38649, Stop: 38377, Start Num: 36

Candidate Starts for Dalmatian_59:

(Start: 36 @38649 has 126 MA's), (Start: 40 @38640 has 49 MA's), (44, 38628), (45, 38622), (67, 38499), (73, 38469),

Gene: Darrell_60 Start: 38922, Stop: 38650, Start Num: 36

Candidate Starts for Darrell_60:

(Start: 36 @38922 has 126 MA's), (Start: 40 @38913 has 49 MA's), (49, 38856), (54, 38820), (67, 38772), (76, 38730),

Gene: DarthPhader_54 Start: 39183, Stop: 38911, Start Num: 36

Candidate Starts for DarthPhader_54:

(Start: 36 @39183 has 126 MA's), (Start: 40 @39174 has 49 MA's), (54, 39081), (67, 39033), (72, 39009), (73, 39003),

Gene: Dashyla_9 Start: 6362, Stop: 6042, Start Num: 40

Candidate Starts for Dashyla_9:

(22, 6452), (Start: 40 @6362 has 49 MA's), (47, 6311), (50, 6296), (56, 6248), (80, 6107),

Gene: DekHockey33_65 Start: 37959, Stop: 37690, Start Num: 37

Candidate Starts for DekHockey33_65:

(2, 38403), (6, 38301), (Start: 37 @37959 has 28 MA's), (73, 37782),

Gene: Dignity_60 Start: 38849, Stop: 38577, Start Num: 36

Candidate Starts for Dignity_60:

(Start: 36 @38849 has 126 MA's), (Start: 40 @38840 has 49 MA's), (44, 38828), (45, 38822), (67, 38699),

Gene: Divya_49 Start: 34038, Stop: 34328, Start Num: 34

Candidate Starts for Divya_49:

(Start: 34 @34038 has 3 MA's), (46, 34089), (48, 34104), (71, 34212), (74, 34227), (89, 34302),

Gene: DreamTeam1_56 Start: 37922, Stop: 37650, Start Num: 36

Candidate Starts for DreamTeam1_56:

(Start: 36 @37922 has 126 MA's), (49, 37856), (54, 37820), (71, 37754), (73, 37742), (75, 37733),

Gene: DudeLittle_57 Start: 38415, Stop: 38143, Start Num: 36

Candidate Starts for DudeLittle_57:

(Start: 36 @38415 has 126 MA's), (Start: 40 @38406 has 49 MA's), (44, 38394), (45, 38388), (67, 38265), (73, 38235),

Gene: DumpQuist_9 Start: 6359, Stop: 6036, Start Num: 40

Candidate Starts for DumpQuist_9:

(Start: 40 @6359 has 49 MA's), (47, 6308), (52, 6263), (56, 6245), (73, 6140), (84, 6089),

Gene: Duplo_60 Start: 38306, Stop: 38034, Start Num: 36

Candidate Starts for Duplo_60:

(Start: 36 @38306 has 126 MA's), (Start: 40 @38297 has 49 MA's), (54, 38204), (73, 38126), (85, 38072),

Gene: Dusty_122 Start: 70537, Stop: 70830, Start Num: 35

Candidate Starts for Dusty_122:

(Start: 35 @70537 has 11 MA's), (46, 70585), (72, 70714),

Gene: EagleEye_60 Start: 38143, Stop: 37871, Start Num: 36

Candidate Starts for EagleEye_60:

(24, 38212), (Start: 36 @38143 has 126 MA's), (Start: 38 @38140 has 1 MA's), (Start: 40 @38134 has 49 MA's), (54, 38041), (66, 37999), (67, 37993), (73, 37963),

Gene: Ebony_57 Start: 37357, Stop: 37085, Start Num: 36

Candidate Starts for Ebony_57:

(Start: 36 @37357 has 126 MA's), (Start: 40 @37348 has 49 MA's), (73, 37177),

Gene: Echild_58 Start: 37724, Stop: 37452, Start Num: 36

Candidate Starts for Echild_58:

(Start: 36 @37724 has 126 MA's), (Start: 40 @37715 has 49 MA's), (44, 37703), (45, 37697), (67, 37574),

Gene: Eidsmoe_58 Start: 38289, Stop: 38017, Start Num: 36

Candidate Starts for Eidsmoe_58:

(Start: 36 @38289 has 126 MA's), (Start: 40 @38280 has 49 MA's), (49, 38223), (54, 38187), (65, 38148), (71, 38121), (73, 38109),

Gene: Elephantoon_57 Start: 37664, Stop: 37392, Start Num: 36

Candidate Starts for Elephantoon_57:

(Start: 36 @37664 has 126 MA's), (Start: 40 @37655 has 49 MA's), (49, 37598), (54, 37562), (65, 37523), (71, 37496), (73, 37484),

Gene: EmyBug_57 Start: 38291, Stop: 38019, Start Num: 36

Candidate Starts for EmyBug_57:

(Start: 36 @38291 has 126 MA's), (Start: 40 @38282 has 49 MA's), (49, 38225), (54, 38189), (65, 38150), (71, 38123), (73, 38111),

Gene: Engineer_127 Start: 71970, Stop: 72260, Start Num: 37

Candidate Starts for Engineer_127:

(19, 71862), (23, 71877), (30, 71922), (Start: 37 @71970 has 28 MA's), (46, 72015), (72, 72144),

Gene: Epsocamisio_61 Start: 37202, Stop: 36933, Start Num: 37

Candidate Starts for Epsocamisio_61:

(2, 37646), (5, 37622), (6, 37544), (Start: 37 @37202 has 28 MA's), (73, 37025),

Gene: Et2Brutus_56 Start: 37320, Stop: 37048, Start Num: 36

Candidate Starts for Et2Brutus_56:

(Start: 36 @37320 has 126 MA's), (Start: 40 @37311 has 49 MA's), (73, 37140),

Gene: EugeneKrabs_9 Start: 6127, Stop: 5798, Start Num: 40

Candidate Starts for EugeneKrabs_9:

(Start: 40 @6127 has 49 MA's), (47, 6073), (62, 5974), (73, 5905), (77, 5881), (87, 5836),

Gene: EvilGenius_60 Start: 40027, Stop: 39755, Start Num: 36

Candidate Starts for EvilGenius_60:

(Start: 36 @40027 has 126 MA's), (Start: 40 @40018 has 49 MA's), (44, 40006), (45, 40000), (67, 39877),

Gene: ExplosioNervosa_58 Start: 38348, Stop: 38085, Start Num: 40

Candidate Starts for ExplosioNervosa_58:

(Start: 36 @38357 has 126 MA's), (Start: 40 @38348 has 49 MA's), (49, 38291), (54, 38255), (65, 38216), (71, 38189), (73, 38177),

Gene: Ezurina_2 Start: 591, Stop: 860, Start Num: 40

Candidate Starts for Ezurina_2:

(Start: 40 @591 has 49 MA's), (55, 687), (70, 741),

Gene: Fameo_58 Start: 38774, Stop: 38502, Start Num: 36

Candidate Starts for Fameo_58:

(Start: 36 @38774 has 126 MA's), (Start: 40 @38765 has 49 MA's), (44, 38753), (45, 38747), (67, 38624), (73, 38594),

Gene: FatCactus_50 Start: 35904, Stop: 35632, Start Num: 36

Candidate Starts for FatCactus_50:

(Start: 36 @35904 has 126 MA's), (Start: 40 @35895 has 49 MA's), (67, 35754), (73, 35724),

Gene: Fayely_58 Start: 38258, Stop: 37986, Start Num: 36

Candidate Starts for Fayely_58:

(Start: 36 @38258 has 126 MA's), (Start: 40 @38249 has 49 MA's), (49, 38192), (54, 38156), (65, 38117), (71, 38090), (73, 38078),

Gene: Fede_9 Start: 6342, Stop: 6010, Start Num: 40
Candidate Starts for Fede_9:
(Start: 40 @6342 has 49 MA's), (46, 6303), (47, 6291), (51, 6273), (62, 6192), (80, 6087),

Gene: Fibonacci_57 Start: 37326, Stop: 37054, Start Num: 36
Candidate Starts for Fibonacci_57:
(Start: 36 @37326 has 126 MA's), (Start: 40 @37317 has 49 MA's), (73, 37146),

Gene: FiringLine_58 Start: 38424, Stop: 38152, Start Num: 36
Candidate Starts for FiringLine_58:
(Start: 36 @38424 has 126 MA's), (Start: 40 @38415 has 49 MA's), (44, 38403), (45, 38397), (67, 38274),

Gene: Flaverint_58 Start: 37784, Stop: 37512, Start Num: 36
Candidate Starts for Flaverint_58:
(Start: 36 @37784 has 126 MA's), (Start: 40 @37775 has 49 MA's), (73, 37604),

Gene: Fullmetal_9 Start: 6128, Stop: 5772, Start Num: 40
Candidate Starts for Fullmetal_9:
(Start: 40 @6128 has 49 MA's), (46, 6089), (48, 6074), (60, 5987), (62, 5978), (80, 5870), (81, 5861), (87, 5822),

Gene: Geeche_123 Start: 70760, Stop: 71053, Start Num: 35
Candidate Starts for Geeche_123:
(Start: 35 @70760 has 11 MA's), (46, 70808), (72, 70937),

Gene: Georgie2_59 Start: 38469, Stop: 38197, Start Num: 36
Candidate Starts for Georgie2_59:
(Start: 36 @38469 has 126 MA's), (Start: 40 @38460 has 49 MA's), (44, 38448), (45, 38442),

Gene: Gerri43_3 Start: 977, Stop: 1246, Start Num: 40
Candidate Starts for Gerri43_3:
(Start: 40 @977 has 49 MA's),

Gene: Gilberta_58 Start: 37777, Stop: 37505, Start Num: 36
Candidate Starts for Gilberta_58:
(Start: 36 @37777 has 126 MA's), (Start: 40 @37768 has 49 MA's), (73, 37597),

Gene: GoldDust_40 Start: 33666, Stop: 33986, Start Num: 34
Candidate Starts for GoldDust_40:
(Start: 34 @33666 has 3 MA's), (48, 33732), (82, 33912), (89, 33957),

Gene: Gooberta_40 Start: 33665, Stop: 33985, Start Num: 34
Candidate Starts for Gooberta_40:
(Start: 34 @33665 has 3 MA's), (48, 33731), (82, 33911), (89, 33956),

Gene: Heffalump_57 Start: 39242, Stop: 38970, Start Num: 36
Candidate Starts for Heffalump_57:
(Start: 36 @39242 has 126 MA's), (Start: 40 @39233 has 49 MA's), (44, 39221), (45, 39215), (67, 39092), (73, 39062),

Gene: Herbertwm_56 Start: 38206, Stop: 37934, Start Num: 36
Candidate Starts for Herbertwm_56:

(12, 38407), (Start: 36 @38206 has 126 MA's), (Start: 40 @38197 has 49 MA's), (44, 38185), (47, 38146), (48, 38143), (55, 38101), (57, 38095), (67, 38056), (73, 38026),

Gene: HippoHollow_58 Start: 39876, Stop: 39604, Start Num: 36

Candidate Starts for HippoHollow_58:

(3, 40299), (4, 40290), (10, 40116), (12, 40077), (Start: 36 @39876 has 126 MA's), (44, 39855), (45, 39849), (67, 39726), (73, 39696),

Gene: Hirko_38 Start: 32932, Stop: 33225, Start Num: 34

Candidate Starts for Hirko_38:

(Start: 33 @32917 has 2 MA's), (Start: 34 @32932 has 3 MA's), (59, 33052), (70, 33100), (89, 33196),

Gene: HitchHiker_10 Start: 6310, Stop: 5987, Start Num: 40

Candidate Starts for HitchHiker_10:

(13, 6478), (14, 6460), (17, 6427), (Start: 40 @6310 has 49 MA's), (47, 6259), (50, 6244), (56, 6196), (74, 6088), (84, 6040), (87, 6022),

Gene: HortumSL17_58 Start: 38225, Stop: 37953, Start Num: 36

Candidate Starts for HortumSL17_58:

(Start: 36 @38225 has 126 MA's), (Start: 40 @38216 has 49 MA's), (49, 38159), (54, 38123), (65, 38084), (71, 38057), (73, 38045),

Gene: Hutc2_57 Start: 37326, Stop: 37054, Start Num: 36

Candidate Starts for Hutc2_57:

(Start: 36 @37326 has 126 MA's), (Start: 40 @37317 has 49 MA's), (73, 37146),

Gene: Insomnia_58 Start: 37837, Stop: 37565, Start Num: 36

Candidate Starts for Insomnia_58:

(Start: 36 @37837 has 126 MA's), (Start: 40 @37828 has 49 MA's), (73, 37657),

Gene: JSwag_63 Start: 37391, Stop: 37122, Start Num: 37

Candidate Starts for JSwag_63:

(2, 37835), (5, 37811), (6, 37733), (Start: 37 @37391 has 28 MA's), (73, 37214),

Gene: Jabith_58 Start: 37838, Stop: 37566, Start Num: 36

Candidate Starts for Jabith_58:

(Start: 36 @37838 has 126 MA's), (Start: 40 @37829 has 49 MA's), (73, 37658),

Gene: Jerm_60 Start: 38841, Stop: 38569, Start Num: 36

Candidate Starts for Jerm_60:

(Start: 36 @38841 has 126 MA's), (Start: 40 @38832 has 49 MA's), (44, 38820), (45, 38814), (67, 38691),

Gene: JessellCookie_9 Start: 6219, Stop: 5899, Start Num: 40

Candidate Starts for JessellCookie_9:

(Start: 40 @6219 has 49 MA's), (47, 6168), (48, 6165), (73, 6000), (87, 5931),

Gene: Jiawan_56 Start: 38310, Stop: 38038, Start Num: 36

Candidate Starts for Jiawan_56:

(Start: 36 @38310 has 126 MA's), (Start: 40 @38301 has 49 MA's), (49, 38244), (54, 38208), (65, 38169), (71, 38142), (73, 38130),

Gene: JimmyPG_9 Start: 6105, Stop: 5752, Start Num: 41

Candidate Starts for JimmyPG_9:

(22, 6201), (Start: 40 @6108 has 49 MA's), (Start: 41 @6105 has 2 MA's), (46, 6069), (61, 5961), (68, 5916), (81, 5841), (87, 5802),

Gene: Jinkies_45 Start: 34146, Stop: 34457, Start Num: 34

Candidate Starts for Jinkies_45:

(Start: 34 @34146 has 3 MA's), (42, 34164), (54, 34263), (57, 34272), (85, 34398), (90, 34434),

Gene: JonJames_133 Start: 77174, Stop: 77473, Start Num: 35

Candidate Starts for JonJames_133:

(Start: 35 @77174 has 11 MA's), (47, 77234), (54, 77276), (57, 77285), (66, 77321), (72, 77351),

Gene: JordanFarm_9 Start: 6089, Stop: 5751, Start Num: 40

Candidate Starts for JordanFarm_9:

(18, 6161), (Start: 40 @6089 has 49 MA's), (46, 6050), (55, 5978), (62, 5939), (88, 5798),

Gene: Joselito_58 Start: 37786, Stop: 37514, Start Num: 36

Candidate Starts for Joselito_58:

(Start: 36 @37786 has 126 MA's), (Start: 40 @37777 has 49 MA's), (73, 37606),

Gene: Journey13_52 Start: 36811, Stop: 36539, Start Num: 36

Candidate Starts for Journey13_52:

(Start: 36 @36811 has 126 MA's), (Start: 40 @36802 has 49 MA's), (45, 36784), (57, 36700), (67, 36661), (73, 36631),

Gene: Jsquared_56 Start: 37405, Stop: 37133, Start Num: 36

Candidate Starts for Jsquared_56:

(Start: 36 @37405 has 126 MA's), (44, 37384), (45, 37378), (67, 37255), (70, 37243),

Gene: KatherineG_64 Start: 37864, Stop: 37595, Start Num: 37

Candidate Starts for KatherineG_64:

(Start: 37 @37864 has 28 MA's), (73, 37687),

Gene: Keough_9 Start: 6092, Stop: 5736, Start Num: 40

Candidate Starts for Keough_9:

(Start: 40 @6092 has 49 MA's), (46, 6053), (48, 6038), (62, 5942), (80, 5834), (81, 5825), (87, 5786),

Gene: Kerberos_60 Start: 38268, Stop: 37996, Start Num: 36

Candidate Starts for Kerberos_60:

(Start: 36 @38268 has 126 MA's), (Start: 40 @38259 has 49 MA's), (54, 38166), (73, 38088), (85, 38034),

Gene: Keziacharles14_58 Start: 39366, Stop: 39094, Start Num: 36

Candidate Starts for Keziacharles14_58:

(Start: 36 @39366 has 126 MA's), (Start: 40 @39357 has 49 MA's), (49, 39300), (54, 39264), (66, 39222),

Gene: Kimba_57 Start: 37358, Stop: 37086, Start Num: 36

Candidate Starts for Kimba_57:

(Start: 36 @37358 has 126 MA's), (Start: 40 @37349 has 49 MA's), (73, 37178),

Gene: KingCyrus_60 Start: 40022, Stop: 39750, Start Num: 36

Candidate Starts for KingCyrus_60:

(Start: 36 @40022 has 126 MA's), (Start: 40 @40013 has 49 MA's), (44, 40001), (45, 39995), (67, 39872),

Gene: KingKamren_9 Start: 6124, Stop: 5798, Start Num: 40

Candidate Starts for KingKamren_9:

(Start: 40 @6124 has 49 MA's), (47, 6073), (73, 5905), (87, 5836),

Gene: Klodlith_57 Start: 37984, Stop: 37712, Start Num: 36

Candidate Starts for Klodlith_57:

(Start: 36 @37984 has 126 MA's), (49, 37918), (54, 37882), (71, 37816), (73, 37804), (75, 37795),

Gene: Koduck_59 Start: 37723, Stop: 37412, Start Num: 28

Candidate Starts for Koduck_59:

(1, 38146), (8, 37963), (11, 37924), (Start: 28 @37723 has 2 MA's), (Start: 36 @37684 has 126 MA's), (45, 37657), (67, 37534), (70, 37522),

Gene: Kosier_9 Start: 6342, Stop: 6010, Start Num: 40

Candidate Starts for Kosier_9:

(Start: 40 @6342 has 49 MA's), (46, 6303), (47, 6291), (51, 6273), (62, 6192), (80, 6087),

Gene: L5_56 Start: 37810, Stop: 37499, Start Num: 28

Candidate Starts for L5_56:

(1, 38233), (8, 38050), (11, 38011), (Start: 28 @37810 has 2 MA's), (Start: 36 @37771 has 126 MA's), (45, 37744), (67, 37621), (70, 37609),

Gene: Larenn_57 Start: 38431, Stop: 38159, Start Num: 36

Candidate Starts for Larenn_57:

(Start: 36 @38431 has 126 MA's), (45, 38404), (48, 38368), (55, 38326), (67, 38281), (73, 38251), (75, 38242),

Gene: LastNadiia_6 Start: 3336, Stop: 3599, Start Num: 39

Candidate Starts for LastNadiia_6:

(39, 3336), (54, 3429), (78, 3522),

Gene: LastResort_62 Start: 37443, Stop: 37174, Start Num: 37

Candidate Starts for LastResort_62:

(2, 37887), (5, 37863), (6, 37785), (Start: 37 @37443 has 28 MA's), (73, 37266),

Gene: Leviathan_60 Start: 38898, Stop: 38626, Start Num: 36

Candidate Starts for Leviathan_60:

(Start: 36 @38898 has 126 MA's), (Start: 40 @38889 has 49 MA's), (44, 38877), (45, 38871), (67, 38748),

Gene: LilTurb_59 Start: 38722, Stop: 38450, Start Num: 36

Candidate Starts for LilTurb_59:

(Start: 36 @38722 has 126 MA's), (Start: 40 @38713 has 49 MA's), (44, 38701), (45, 38695), (67, 38572),

Gene: Lilleskat_56 Start: 38227, Stop: 37955, Start Num: 36

Candidate Starts for Lilleskat_56:

(Start: 36 @38227 has 126 MA's), (Start: 40 @38218 has 49 MA's), (49, 38161), (54, 38125), (65, 38086), (71, 38059), (73, 38047),

Gene: LilyLou_9 Start: 6368, Stop: 6045, Start Num: 40
Candidate Starts for LilyLou_9:
(Start: 40 @6368 has 49 MA's), (47, 6317), (52, 6272), (56, 6254), (73, 6149), (84, 6098),

Gene: LionsBait_60 Start: 39877, Stop: 39605, Start Num: 36
Candidate Starts for LionsBait_60:
(3, 40300), (4, 40291), (10, 40117), (12, 40078), (Start: 36 @39877 has 126 MA's), (44, 39856), (45, 39850), (67, 39727), (73, 39697),

Gene: Lokk_55 Start: 37800, Stop: 37528, Start Num: 36
Candidate Starts for Lokk_55:
(Start: 36 @37800 has 126 MA's), (45, 37773), (67, 37650), (73, 37620),

Gene: LoneWolf_59 Start: 38258, Stop: 37986, Start Num: 36
Candidate Starts for LoneWolf_59:
(Start: 36 @38258 has 126 MA's), (Start: 40 @38249 has 49 MA's), (49, 38192), (54, 38156), (67, 38108), (73, 38078),

Gene: Looper_63 Start: 37355, Stop: 37086, Start Num: 37
Candidate Starts for Looper_63:
(2, 37799), (5, 37775), (6, 37697), (Start: 37 @37355 has 28 MA's), (73, 37178),

Gene: Lozinak_125 Start: 71628, Stop: 71921, Start Num: 35
Candidate Starts for Lozinak_125:
(Start: 35 @71628 has 11 MA's), (46, 71676), (72, 71805),

Gene: Lucivia_58 Start: 37835, Stop: 37563, Start Num: 36
Candidate Starts for Lucivia_58:
(Start: 36 @37835 has 126 MA's), (Start: 40 @37826 has 49 MA's), (73, 37655),

Gene: Lucyedi_59 Start: 38336, Stop: 38067, Start Num: 38
Candidate Starts for Lucyedi_59:
(24, 38408), (Start: 36 @38339 has 126 MA's), (Start: 38 @38336 has 1 MA's), (Start: 40 @38330 has 49 MA's), (54, 38237), (66, 38195), (67, 38189), (73, 38159),

Gene: MaCh_58 Start: 37765, Stop: 37493, Start Num: 36
Candidate Starts for MaCh_58:
(Start: 36 @37765 has 126 MA's), (Start: 40 @37756 has 49 MA's), (67, 37615),

Gene: Mabel_57 Start: 37367, Stop: 37095, Start Num: 36
Candidate Starts for Mabel_57:
(Start: 36 @37367 has 126 MA's), (Start: 40 @37358 has 49 MA's), (73, 37187),

Gene: MajorMajor_57 Start: 37421, Stop: 37149, Start Num: 36
Candidate Starts for MajorMajor_57:
(Start: 36 @37421 has 126 MA's), (44, 37400), (45, 37394), (67, 37271), (70, 37259),

Gene: Makima_4 Start: 2462, Stop: 2728, Start Num: 39
Candidate Starts for Makima_4:
(39, 2462), (70, 2612), (86, 2687),

Gene: Malec_58 Start: 38998, Stop: 38726, Start Num: 36
Candidate Starts for Malec_58:

(Start: 36 @38998 has 126 MA's), (45, 38971), (48, 38935), (55, 38893), (67, 38848), (73, 38818), (75, 38809),

Gene: Maminiaina_57 Start: 38227, Stop: 37955, Start Num: 36

Candidate Starts for Maminiaina_57:

(Start: 36 @38227 has 126 MA's), (Start: 40 @38218 has 49 MA's), (49, 38161), (54, 38125), (73, 38047),

Gene: Mazun_9 Start: 6131, Stop: 5775, Start Num: 40

Candidate Starts for Mazun_9:

(Start: 40 @6131 has 49 MA's), (46, 6092), (48, 6077), (62, 5981), (81, 5864), (87, 5825),

Gene: MegTheThird_57 Start: 38030, Stop: 37758, Start Num: 36

Candidate Starts for MegTheThird_57:

(Start: 36 @38030 has 126 MA's), (Start: 40 @38021 has 49 MA's), (54, 37928), (67, 37880), (71, 37862),

Gene: MiamiPanther_9 Start: 6219, Stop: 5899, Start Num: 40

Candidate Starts for MiamiPanther_9:

(Start: 40 @6219 has 49 MA's), (47, 6168), (48, 6165), (73, 6000), (87, 5931),

Gene: Miko_55 Start: 38578, Stop: 38306, Start Num: 36

Candidate Starts for Miko_55:

(12, 38779), (Start: 36 @38578 has 126 MA's), (45, 38551), (67, 38428), (73, 38398),

Gene: MinecraftSteve_64 Start: 37679, Stop: 37410, Start Num: 37

Candidate Starts for MinecraftSteve_64:

(Start: 37 @37679 has 28 MA's), (73, 37502),

Gene: Minispark_57 Start: 37983, Stop: 37711, Start Num: 36

Candidate Starts for Minispark_57:

(Start: 36 @37983 has 126 MA's), (Start: 40 @37974 has 49 MA's), (49, 37917), (54, 37881), (67, 37833),

Gene: Miskis_120 Start: 71060, Stop: 71353, Start Num: 35

Candidate Starts for Miskis_120:

(Start: 35 @71060 has 11 MA's), (46, 71108), (72, 71237),

Gene: MissWhite_57 Start: 36925, Stop: 36653, Start Num: 36

Candidate Starts for MissWhite_57:

(Start: 36 @36925 has 126 MA's), (Start: 40 @36916 has 49 MA's), (45, 36898), (73, 36745),

Gene: Moleficent_9 Start: 6125, Stop: 5769, Start Num: 40

Candidate Starts for Moleficent_9:

(Start: 40 @6125 has 49 MA's), (46, 6086), (48, 6071), (62, 5975), (80, 5867), (81, 5858), (87, 5819),

Gene: Morrill_9 Start: 6080, Stop: 5724, Start Num: 40

Candidate Starts for Morrill_9:

(Start: 40 @6080 has 49 MA's), (46, 6041), (48, 6026), (81, 5813), (87, 5774),

Gene: Mulciber_57 Start: 37323, Stop: 37051, Start Num: 36

Candidate Starts for Mulciber_57:

(Start: 36 @37323 has 126 MA's), (Start: 40 @37314 has 49 MA's), (73, 37143),

Gene: Munch_58 Start: 37786, Stop: 37514, Start Num: 36

Candidate Starts for Munch_58:

(Start: 36 @37786 has 126 MA's), (Start: 40 @37777 has 49 MA's), (73, 37606),

Gene: Music_39 Start: 33258, Stop: 33593, Start Num: 33

Candidate Starts for Music_39:

(Start: 33 @33258 has 2 MA's), (Start: 34 @33273 has 3 MA's), (73, 33486), (74, 33489), (89, 33564),

Gene: Myxus_58 Start: 38225, Stop: 37953, Start Num: 36

Candidate Starts for Myxus_58:

(Start: 36 @38225 has 126 MA's), (Start: 40 @38216 has 49 MA's), (49, 38159), (54, 38123), (65, 38084), (71, 38057), (73, 38045),

Gene: Naji_60 Start: 38269, Stop: 37997, Start Num: 36

Candidate Starts for Naji_60:

(Start: 36 @38269 has 126 MA's), (Start: 40 @38260 has 49 MA's), (54, 38167), (73, 38089), (85, 38035),

Gene: Nebulosus_62 Start: 37439, Stop: 37170, Start Num: 37

Candidate Starts for Nebulosus_62:

(2, 37883), (5, 37859), (6, 37781), (Start: 37 @37439 has 28 MA's), (73, 37262), (83, 37223),

Gene: Nedarya_60 Start: 37419, Stop: 37150, Start Num: 36

Candidate Starts for Nedarya_60:

(5, 37842), (Start: 36 @37419 has 126 MA's), (Start: 40 @37410 has 49 MA's), (45, 37392), (73, 37239),

Gene: Neuville_3 Start: 977, Stop: 1246, Start Num: 40

Candidate Starts for Neuville_3:

(Start: 40 @977 has 49 MA's),

Gene: Norvs_124 Start: 71047, Stop: 71340, Start Num: 35

Candidate Starts for Norvs_124:

(Start: 35 @71047 has 11 MA's), (46, 71095), (72, 71224),

Gene: NothingSpecial_56 Start: 38807, Stop: 38535, Start Num: 36

Candidate Starts for NothingSpecial_56:

(Start: 36 @38807 has 126 MA's), (44, 38786), (45, 38780), (48, 38744), (55, 38702), (58, 38693), (67, 38657), (73, 38627), (75, 38618), (76, 38615),

Gene: Oatly_9 Start: 6310, Stop: 5987, Start Num: 40

Candidate Starts for Oatly_9:

(13, 6478), (14, 6460), (17, 6427), (Start: 40 @6310 has 49 MA's), (47, 6259), (50, 6244), (56, 6196), (74, 6088), (84, 6040), (87, 6022),

Gene: Odin_56 Start: 37328, Stop: 37056, Start Num: 36

Candidate Starts for Odin_56:

(Start: 36 @37328 has 126 MA's), (45, 37301), (67, 37178), (70, 37166),

Gene: Onglai_56 Start: 36566, Stop: 36294, Start Num: 36

Candidate Starts for Onglai_56:

(Start: 36 @36566 has 126 MA's), (Start: 40 @36557 has 49 MA's), (49, 36500), (54, 36464), (65, 36425), (71, 36398), (73, 36386),

Gene: Oofda_65 Start: 37642, Stop: 37373, Start Num: 37

Candidate Starts for Oofda_65:

(Start: 37 @37642 has 28 MA's), (73, 37465),

Gene: Orange_57 Start: 37335, Stop: 37063, Start Num: 36

Candidate Starts for Orange_57:

(Start: 36 @37335 has 126 MA's), (Start: 40 @37326 has 49 MA's), (73, 37155),

Gene: Orkz_49 Start: 32713, Stop: 32997, Start Num: 42

Candidate Starts for Orkz_49:

(9, 32434), (Start: 34 @32695 has 3 MA's), (42, 32713), (57, 32821), (82, 32926), (88, 32956),

Gene: Pabst_9 Start: 6171, Stop: 5848, Start Num: 40

Candidate Starts for Pabst_9:

(31, 6219), (Start: 40 @6171 has 49 MA's), (46, 6132), (47, 6120), (74, 5949), (80, 5916), (87, 5883), (90, 5865),

Gene: PackMan_57 Start: 38225, Stop: 37953, Start Num: 36

Candidate Starts for PackMan_57:

(Start: 36 @38225 has 126 MA's), (Start: 40 @38216 has 49 MA's), (49, 38159), (54, 38123), (65, 38084), (71, 38057), (73, 38045),

Gene: PainterBoy_59 Start: 38298, Stop: 38026, Start Num: 36

Candidate Starts for PainterBoy_59:

(24, 38367), (Start: 36 @38298 has 126 MA's), (Start: 40 @38289 has 49 MA's), (54, 38196), (67, 38148), (71, 38130), (73, 38118),

Gene: Petersenfast_56 Start: 37334, Stop: 37062, Start Num: 36

Candidate Starts for Petersenfast_56:

(Start: 36 @37334 has 126 MA's), (Start: 40 @37325 has 49 MA's), (73, 37154),

Gene: Ph8s_59 Start: 37685, Stop: 37413, Start Num: 36

Candidate Starts for Ph8s_59:

(Start: 36 @37685 has 126 MA's), (48, 37622), (57, 37574), (67, 37535), (70, 37523), (73, 37505),

Gene: Phaeder_58 Start: 38225, Stop: 37953, Start Num: 36

Candidate Starts for Phaeder_58:

(Start: 36 @38225 has 126 MA's), (Start: 40 @38216 has 49 MA's), (49, 38159), (54, 38123), (65, 38084), (71, 38057), (73, 38045),

Gene: Pharaoh_53 Start: 38271, Stop: 37999, Start Num: 36

Candidate Starts for Pharaoh_53:

(12, 38472), (Start: 36 @38271 has 126 MA's), (Start: 40 @38262 has 49 MA's), (44, 38250), (48, 38208), (54, 38169), (67, 38121), (71, 38103), (73, 38091), (75, 38082),

Gene: Pharky_9 Start: 6092, Stop: 5736, Start Num: 40

Candidate Starts for Pharky_9:

(Start: 40 @6092 has 49 MA's), (46, 6053), (48, 6038), (60, 5951), (62, 5942), (80, 5834), (81, 5825), (87, 5786),

Gene: Phedro_9 Start: 6092, Stop: 5736, Start Num: 40

Candidate Starts for Phedro_9:

(Start: 40 @6092 has 49 MA's), (46, 6053), (48, 6038), (60, 5951), (62, 5942), (80, 5834), (81, 5825), (87, 5786),

Gene: PhinkBoden_125 Start: 71915, Stop: 72205, Start Num: 37

Candidate Starts for PhinkBoden_125:

(19, 71807), (23, 71822), (30, 71867), (Start: 37 @71915 has 28 MA's), (46, 71960), (72, 72089),

Gene: Phlei_47 Start: 37907, Stop: 37635, Start Num: 36

Candidate Starts for Phlei_47:

(Start: 36 @37907 has 126 MA's), (Start: 40 @37898 has 49 MA's), (57, 37796), (67, 37757), (68, 37754), (85, 37673),

Gene: Phogo_9 Start: 6365, Stop: 6045, Start Num: 40

Candidate Starts for Phogo_9:

(22, 6455), (Start: 40 @6365 has 49 MA's), (47, 6314), (50, 6299), (56, 6251), (80, 6110),

Gene: Phonnegut_58 Start: 38322, Stop: 38050, Start Num: 36

Candidate Starts for Phonnegut_58:

(Start: 36 @38322 has 126 MA's), (Start: 40 @38313 has 49 MA's), (49, 38256), (54, 38220), (65, 38181), (71, 38154), (73, 38142),

Gene: Phractured_9 Start: 6092, Stop: 5736, Start Num: 40

Candidate Starts for Phractured_9:

(Start: 40 @6092 has 49 MA's), (46, 6053), (48, 6038), (60, 5951), (62, 5942), (80, 5834), (81, 5825), (87, 5786),

Gene: PhriedRice_9 Start: 6092, Stop: 5736, Start Num: 40

Candidate Starts for PhriedRice_9:

(Start: 40 @6092 has 49 MA's), (46, 6053), (48, 6038), (62, 5942), (80, 5834), (81, 5825), (87, 5786),

Gene: PineapplePluto_10 Start: 6454, Stop: 6131, Start Num: 40

Candidate Starts for PineapplePluto_10:

(13, 6622), (17, 6571), (Start: 40 @6454 has 49 MA's), (47, 6403), (50, 6388), (56, 6340), (74, 6232), (84, 6184), (87, 6166),

Gene: Pioneer_58 Start: 38322, Stop: 38050, Start Num: 36

Candidate Starts for Pioneer_58:

(Start: 36 @38322 has 126 MA's), (Start: 40 @38313 has 49 MA's), (49, 38256), (54, 38220), (65, 38181), (71, 38154), (73, 38142),

Gene: Pomar16_60 Start: 38309, Stop: 38037, Start Num: 36

Candidate Starts for Pomar16_60:

(Start: 36 @38309 has 126 MA's), (Start: 40 @38300 has 49 MA's), (54, 38207), (73, 38129), (85, 38075),

Gene: Power_57 Start: 38477, Stop: 38205, Start Num: 36

Candidate Starts for Power_57:

(Start: 36 @38477 has 126 MA's), (Start: 40 @38468 has 49 MA's), (44, 38456), (45, 38450), (67, 38327),

Gene: Priya_58 Start: 38292, Stop: 38020, Start Num: 36

Candidate Starts for Priya_58:

(Start: 36 @38292 has 126 MA's), (Start: 40 @38283 has 49 MA's), (49, 38226), (54, 38190), (65, 38151), (71, 38124), (73, 38112),

Gene: Qobbit_58 Start: 38254, Stop: 37982, Start Num: 36

Candidate Starts for Qobbit_58:

(Start: 36 @38254 has 126 MA's), (Start: 40 @38245 has 49 MA's), (49, 38188), (54, 38152), (65, 38113), (71, 38086), (73, 38074),

Gene: QueenB2_57 Start: 38455, Stop: 38183, Start Num: 36

Candidate Starts for QueenB2_57:

(Start: 36 @38455 has 126 MA's), (Start: 40 @38446 has 49 MA's), (44, 38434), (45, 38428), (67, 38305), (73, 38275),

Gene: QueenBeesly_58 Start: 38424, Stop: 38152, Start Num: 36

Candidate Starts for QueenBeesly_58:

(Start: 36 @38424 has 126 MA's), (Start: 40 @38415 has 49 MA's), (44, 38403), (45, 38397), (67, 38274),

Gene: Quokka_56 Start: 37421, Stop: 37149, Start Num: 36

Candidate Starts for Quokka_56:

(Start: 36 @37421 has 126 MA's), (44, 37400), (45, 37394), (67, 37271), (70, 37259),

Gene: Rachaly_57 Start: 38723, Stop: 38451, Start Num: 36

Candidate Starts for Rachaly_57:

(Start: 36 @38723 has 126 MA's), (45, 38696), (67, 38573), (73, 38543),

Gene: Rahalelujah_58 Start: 37998, Stop: 37726, Start Num: 36

Candidate Starts for Rahalelujah_58:

(Start: 36 @37998 has 126 MA's), (Start: 40 @37989 has 49 MA's), (49, 37932), (54, 37896), (67, 37848),

Gene: Ravana_67 Start: 38767, Stop: 38498, Start Num: 37

Candidate Starts for Ravana_67:

(Start: 37 @38767 has 28 MA's), (73, 38590),

Gene: ReMo_62 Start: 37440, Stop: 37171, Start Num: 37

Candidate Starts for ReMo_62:

(2, 37884), (5, 37860), (6, 37782), (Start: 37 @37440 has 28 MA's), (73, 37263),

Gene: Refuge_56 Start: 39539, Stop: 39267, Start Num: 36

Candidate Starts for Refuge_56:

(32, 39569), (Start: 36 @39539 has 126 MA's), (54, 39437), (67, 39389), (71, 39371), (73, 39359),

Gene: Remus_64 Start: 37446, Stop: 37177, Start Num: 37

Candidate Starts for Remus_64:

(2, 37890), (5, 37866), (6, 37788), (Start: 37 @37446 has 28 MA's), (73, 37269),

Gene: Retro23_59 Start: 38669, Stop: 38397, Start Num: 36

Candidate Starts for Retro23_59:

(Start: 36 @38669 has 126 MA's), (Start: 40 @38660 has 49 MA's), (44, 38648), (45, 38642), (67, 38519), (73, 38489),

Gene: RicoCaldo_9 Start: 6122, Stop: 5766, Start Num: 40
Candidate Starts for RicoCaldo_9:
(Start: 40 @6122 has 49 MA's), (46, 6083), (48, 6068), (62, 5972), (68, 5930), (80, 5864), (81, 5855),
(87, 5816),

Gene: Roberts_3 Start: 977, Stop: 1246, Start Num: 40
Candidate Starts for Roberts_3:
(Start: 40 @977 has 49 MA's),

Gene: Rosalind_62 Start: 37598, Stop: 37329, Start Num: 37
Candidate Starts for Rosalind_62:
(2, 38042), (5, 38018), (6, 37940), (Start: 37 @37598 has 28 MA's), (73, 37421),

Gene: RyeScarlet_59 Start: 38297, Stop: 38025, Start Num: 36
Candidate Starts for RyeScarlet_59:
(Start: 36 @38297 has 126 MA's), (Start: 40 @38288 has 49 MA's), (49, 38231), (54, 38195), (65,
38156), (71, 38129), (73, 38117),

Gene: Sachima_55 Start: 38207, Stop: 37935, Start Num: 36
Candidate Starts for Sachima_55:
(Start: 36 @38207 has 126 MA's), (Start: 40 @38198 has 49 MA's), (49, 38141), (54, 38105), (65,
38066), (71, 38039), (73, 38027),

Gene: Salvatore2000_9 Start: 6219, Stop: 5899, Start Num: 40
Candidate Starts for Salvatore2000_9:
(Start: 40 @6219 has 49 MA's), (46, 6180), (47, 6168), (48, 6165), (73, 6000), (87, 5931),

Gene: Salz_56 Start: 37305, Stop: 37033, Start Num: 36
Candidate Starts for Salz_56:
(Start: 36 @37305 has 126 MA's), (Start: 40 @37296 has 49 MA's), (73, 37125),

Gene: Saskia_58 Start: 37333, Stop: 37061, Start Num: 36
Candidate Starts for Saskia_58:
(Start: 36 @37333 has 126 MA's), (Start: 40 @37324 has 49 MA's), (73, 37153),

Gene: Scherzo_58 Start: 38511, Stop: 38239, Start Num: 36
Candidate Starts for Scherzo_58:
(Start: 36 @38511 has 126 MA's), (Start: 40 @38502 has 49 MA's), (49, 38445), (54, 38409), (65,
38370), (71, 38343), (73, 38331),

Gene: SemperFi_59 Start: 38692, Stop: 38420, Start Num: 36
Candidate Starts for SemperFi_59:
(Start: 36 @38692 has 126 MA's), (Start: 40 @38683 has 49 MA's), (44, 38671), (45, 38665), (67,
38542),

Gene: Serenity_58 Start: 37628, Stop: 37356, Start Num: 36
Candidate Starts for Serenity_58:
(20, 37700), (24, 37688), (Start: 36 @37628 has 126 MA's), (44, 37607), (45, 37601), (67, 37478), (70,
37466),

Gene: Sham4_57 Start: 37333, Stop: 37061, Start Num: 36
Candidate Starts for Sham4_57:
(Start: 36 @37333 has 126 MA's), (Start: 40 @37324 has 49 MA's), (73, 37153),

Gene: ShayRa_64 Start: 37627, Stop: 37358, Start Num: 37
Candidate Starts for ShayRa_64:
(2, 38071), (6, 37969), (Start: 37 @37627 has 28 MA's), (73, 37450),

Gene: SheaKeira_56 Start: 37935, Stop: 37663, Start Num: 36
Candidate Starts for SheaKeira_56:
(Start: 36 @37935 has 126 MA's), (Start: 40 @37926 has 49 MA's), (44, 37914), (49, 37869), (54, 37833), (63, 37812), (67, 37785), (69, 37776), (72, 37761), (84, 37710), (88, 37689),

Gene: ShyRosie_9 Start: 6089, Stop: 5751, Start Num: 40
Candidate Starts for ShyRosie_9:
(18, 6161), (Start: 40 @6089 has 49 MA's), (46, 6050), (55, 5978), (62, 5939), (88, 5798),

Gene: Smeagan_61 Start: 38985, Stop: 38713, Start Num: 36
Candidate Starts for Smeagan_61:
(Start: 36 @38985 has 126 MA's), (Start: 40 @38976 has 49 MA's), (44, 38964), (45, 38958), (67, 38835),

Gene: Smoothie_126 Start: 71628, Stop: 71921, Start Num: 35
Candidate Starts for Smoothie_126:
(Start: 35 @71628 has 11 MA's), (46, 71676), (72, 71805),

Gene: SnapTap_58 Start: 38503, Stop: 38231, Start Num: 36
Candidate Starts for SnapTap_58:
(Start: 36 @38503 has 126 MA's), (Start: 40 @38494 has 49 MA's), (44, 38482), (45, 38476), (67, 38353),

Gene: Snape_57 Start: 37325, Stop: 37053, Start Num: 36
Candidate Starts for Snape_57:
(Start: 36 @37325 has 126 MA's), (Start: 40 @37316 has 49 MA's), (73, 37145),

Gene: SoilSleuth_9 Start: 6089, Stop: 5751, Start Num: 40
Candidate Starts for SoilSleuth_9:
(18, 6161), (21, 6146), (Start: 40 @6089 has 49 MA's), (46, 6050), (55, 5978), (62, 5939), (88, 5798),

Gene: Sorvannah_9 Start: 6219, Stop: 5899, Start Num: 40
Candidate Starts for Sorvannah_9:
(Start: 40 @6219 has 49 MA's), (46, 6180), (47, 6168), (48, 6165), (73, 6000), (87, 5931),

Gene: Soups_64 Start: 37890, Stop: 37621, Start Num: 37
Candidate Starts for Soups_64:
(2, 38334), (6, 38232), (Start: 37 @37890 has 28 MA's), (73, 37713),

Gene: Spouty_58 Start: 38291, Stop: 38019, Start Num: 36
Candidate Starts for Spouty_58:
(Start: 36 @38291 has 126 MA's), (Start: 40 @38282 has 49 MA's), (49, 38225), (54, 38189), (65, 38150), (71, 38123), (73, 38111),

Gene: StagePhright_9 Start: 6092, Stop: 5736, Start Num: 40
Candidate Starts for StagePhright_9:
(Start: 40 @6092 has 49 MA's), (46, 6053), (48, 6038), (60, 5951), (62, 5942), (80, 5834), (81, 5825), (87, 5786),

Gene: StarStuff_60 Start: 38271, Stop: 37999, Start Num: 36

Candidate Starts for StarStuff_60:

(Start: 36 @38271 has 126 MA's), (Start: 40 @38262 has 49 MA's), (54, 38169), (73, 38091), (85, 38037),

Gene: Steamy_54 Start: 38003, Stop: 37731, Start Num: 36

Candidate Starts for Steamy_54:

(12, 38204), (Start: 36 @38003 has 126 MA's), (Start: 40 @37994 has 49 MA's), (45, 37976), (48, 37940), (54, 37901), (67, 37853), (71, 37835), (75, 37814), (76, 37811),

Gene: Stormbreaker_9 Start: 6347, Stop: 6027, Start Num: 40

Candidate Starts for Stormbreaker_9:

(15, 6467), (22, 6437), (Start: 40 @6347 has 49 MA's), (47, 6296), (50, 6281), (56, 6233), (80, 6092),

Gene: Strosahl_64 Start: 37446, Stop: 37177, Start Num: 37

Candidate Starts for Strosahl_64:

(2, 37890), (5, 37866), (6, 37788), (Start: 37 @37446 has 28 MA's), (73, 37269),

Gene: Studio_2 Start: 600, Stop: 863, Start Num: 40

Candidate Starts for Studio_2:

(Start: 40 @600 has 49 MA's),

Gene: SunnyJune_47 Start: 33718, Stop: 34011, Start Num: 34

Candidate Starts for SunnyJune_47:

(25, 33658), (Start: 34 @33718 has 3 MA's), (46, 33769), (48, 33784), (57, 33832), (70, 33886), (72, 33898), (74, 33907), (90, 33991),

Gene: Superchunk_56 Start: 36944, Stop: 36672, Start Num: 36

Candidate Starts for Superchunk_56:

(Start: 36 @36944 has 126 MA's), (45, 36917), (67, 36794), (70, 36782),

Gene: SweetiePie_58 Start: 38635, Stop: 38363, Start Num: 36

Candidate Starts for SweetiePie_58:

(Start: 36 @38635 has 126 MA's), (Start: 40 @38626 has 49 MA's), (44, 38614), (45, 38608),

Gene: SwirlSquare_61 Start: 37866, Stop: 37594, Start Num: 36

Candidate Starts for SwirlSquare_61:

(Start: 36 @37866 has 126 MA's), (45, 37839), (50, 37791), (64, 37734), (73, 37686), (77, 37668),

Gene: SwissCheezer_9 Start: 6356, Stop: 6036, Start Num: 40

Candidate Starts for SwissCheezer_9:

(22, 6446), (Start: 40 @6356 has 49 MA's), (47, 6305), (50, 6290), (56, 6242), (80, 6101),

Gene: Switzerland_63 Start: 37766, Stop: 37497, Start Num: 37

Candidate Starts for Switzerland_63:

(2, 38210), (6, 38108), (Start: 37 @37766 has 28 MA's), (73, 37589),

Gene: ThirteenKH_9 Start: 6080, Stop: 5724, Start Num: 40

Candidate Starts for ThirteenKH_9:

(Start: 40 @6080 has 49 MA's), (46, 6041), (48, 6026), (62, 5930), (81, 5813), (87, 5774),

Gene: TicTac_9 Start: 6319, Stop: 5996, Start Num: 40

Candidate Starts for TicTac_9:

(13, 6487), (17, 6436), (Start: 40 @6319 has 49 MA's), (47, 6268), (50, 6253), (56, 6205), (74, 6097), (84, 6049), (87, 6031),

Gene: Timothy_57 Start: 37302, Stop: 37030, Start Num: 36

Candidate Starts for Timothy_57:

(Start: 36 @37302 has 126 MA's), (Start: 40 @37293 has 49 MA's), (73, 37122),

Gene: TinyTimmy_57 Start: 37351, Stop: 37079, Start Num: 36

Candidate Starts for TinyTimmy_57:

(Start: 36 @37351 has 126 MA's), (Start: 40 @37342 has 49 MA's), (73, 37171),

Gene: TinyTimothy_9 Start: 6219, Stop: 5899, Start Num: 40

Candidate Starts for TinyTimothy_9:

(Start: 40 @6219 has 49 MA's), (46, 6180), (47, 6168), (73, 6000), (87, 5931),

Gene: TipsytheTRex_54 Start: 37698, Stop: 37426, Start Num: 36

Candidate Starts for TipsytheTRex_54:

(20, 37770), (24, 37758), (Start: 36 @37698 has 126 MA's), (44, 37677), (45, 37671), (67, 37548), (70, 37536),

Gene: Toaka_58 Start: 38206, Stop: 37934, Start Num: 36

Candidate Starts for Toaka_58:

(Start: 36 @38206 has 126 MA's), (Start: 40 @38197 has 49 MA's), (67, 38056), (71, 38038),

Gene: Tomathan_60 Start: 38318, Stop: 38046, Start Num: 36

Candidate Starts for Tomathan_60:

(Start: 36 @38318 has 126 MA's), (Start: 40 @38309 has 49 MA's), (54, 38216), (73, 38138), (85, 38084),

Gene: Toniann_125 Start: 71160, Stop: 71450, Start Num: 37

Candidate Starts for Toniann_125:

(19, 71052), (23, 71067), (30, 71112), (Start: 37 @71160 has 28 MA's), (46, 71205), (72, 71334),

Gene: Travvers_60 Start: 38268, Stop: 37996, Start Num: 36

Candidate Starts for Travvers_60:

(Start: 36 @38268 has 126 MA's), (Start: 40 @38259 has 49 MA's), (54, 38166), (73, 38088), (85, 38034),

Gene: TripleC_6 Start: 4398, Stop: 4658, Start Num: 41

Candidate Starts for TripleC_6:

(Start: 41 @4398 has 2 MA's), (43, 4404), (54, 4488), (85, 4617),

Gene: TrippleS_9 Start: 6080, Stop: 5724, Start Num: 40

Candidate Starts for TrippleS_9:

(Start: 40 @6080 has 49 MA's), (46, 6041), (48, 6026), (62, 5930), (81, 5813), (87, 5774),

Gene: Truong_9 Start: 6089, Stop: 5751, Start Num: 40

Candidate Starts for Truong_9:

(18, 6161), (Start: 40 @6089 has 49 MA's), (46, 6050), (55, 5978), (62, 5939), (88, 5798),

Gene: Tubs_58 Start: 38225, Stop: 37953, Start Num: 36

Candidate Starts for Tubs_58:

(Start: 36 @38225 has 126 MA's), (Start: 40 @38216 has 49 MA's), (49, 38159), (54, 38123), (65, 38084), (71, 38057), (73, 38045),

Gene: Turbido_59 Start: 38719, Stop: 38447, Start Num: 36

Candidate Starts for Turbido_59:

(Start: 36 @38719 has 126 MA's), (Start: 40 @38710 has 49 MA's), (44, 38698), (45, 38692),

Gene: Ugenie5_55 Start: 38510, Stop: 38238, Start Num: 36

Candidate Starts for Ugenie5_55:

(Start: 36 @38510 has 126 MA's), (Start: 40 @38501 has 49 MA's), (49, 38444), (54, 38408), (65, 38369), (71, 38342), (73, 38330),

Gene: Unphazed_9 Start: 6368, Stop: 6045, Start Num: 40

Candidate Starts for Unphazed_9:

(Start: 40 @6368 has 49 MA's), (47, 6317), (52, 6272), (56, 6254), (73, 6149), (84, 6098),

Gene: VC3_61 Start: 38705, Stop: 38394, Start Num: 29

Candidate Starts for VC3_61:

(Start: 29 @38705 has 4 MA's), (Start: 36 @38666 has 126 MA's), (Start: 40 @38657 has 49 MA's), (54, 38564), (67, 38516), (73, 38486),

Gene: Vanisoa_58 Start: 39326, Stop: 39054, Start Num: 36

Candidate Starts for Vanisoa_58:

(Start: 36 @39326 has 126 MA's), (Start: 40 @39317 has 49 MA's), (49, 39260), (54, 39224), (67, 39176), (73, 39146), (75, 39137),

Gene: Vibaki_39 Start: 33279, Stop: 33614, Start Num: 33

Candidate Starts for Vibaki_39:

(Start: 33 @33279 has 2 MA's), (Start: 34 @33294 has 3 MA's), (73, 33507), (74, 33510), (89, 33585),

Gene: Vitus_40 Start: 32270, Stop: 32614, Start Num: 33

Candidate Starts for Vitus_40:

(7, 31940), (Start: 33 @32270 has 2 MA's), (Start: 34 @32285 has 3 MA's), (48, 32351), (53, 32381), (63, 32438), (71, 32492), (73, 32504), (89, 32582),

Gene: Waits_64 Start: 37663, Stop: 37394, Start Num: 37

Candidate Starts for Waits_64:

(2, 38107), (5, 38083), (6, 38005), (Start: 37 @37663 has 28 MA's), (73, 37486),

Gene: Warrior24_66 Start: 38097, Stop: 37828, Start Num: 37

Candidate Starts for Warrior24_66:

(Start: 37 @38097 has 28 MA's), (73, 37920),

Gene: Waterlily_9 Start: 6089, Stop: 5751, Start Num: 40

Candidate Starts for Waterlily_9:

(18, 6161), (Start: 40 @6089 has 49 MA's), (46, 6050), (55, 5978), (62, 5939), (68, 5897), (88, 5798),

Gene: Wesak_9 Start: 6219, Stop: 5899, Start Num: 40

Candidate Starts for Wesak_9:

(Start: 40 @6219 has 49 MA's), (46, 6180), (47, 6168), (48, 6165), (73, 6000), (87, 5931),

Gene: Whabigail7_59 Start: 38704, Stop: 38432, Start Num: 36

Candidate Starts for Whabigail7_59:

(Start: 36 @38704 has 126 MA's), (Start: 40 @38695 has 49 MA's), (44, 38683), (45, 38677), (67, 38554),

Gene: WilliamBoone_123 Start: 68402, Stop: 68692, Start Num: 37

Candidate Starts for WilliamBoone_123:

(26, 68330), (Start: 37 @68402 has 28 MA's), (72, 68576), (73, 68582),

Gene: Wolpertinger_56 Start: 37334, Stop: 37062, Start Num: 36

Candidate Starts for Wolpertinger_56:

(Start: 36 @37334 has 126 MA's), (Start: 40 @37325 has 49 MA's), (73, 37154),

Gene: WorldCup_57 Start: 37992, Stop: 37720, Start Num: 36

Candidate Starts for WorldCup_57:

(Start: 36 @37992 has 126 MA's), (Start: 40 @37983 has 49 MA's), (49, 37926), (54, 37890), (67, 37842),

Gene: Xitlalli_9 Start: 6353, Stop: 6033, Start Num: 40

Candidate Starts for Xitlalli_9:

(22, 6443), (Start: 40 @6353 has 49 MA's), (47, 6302), (50, 6287), (56, 6239), (80, 6098),

Gene: Yafa_9 Start: 6095, Stop: 5739, Start Num: 40

Candidate Starts for Yafa_9:

(Start: 40 @6095 has 49 MA's), (46, 6056), (48, 6041), (62, 5945), (81, 5828), (87, 5789),

Gene: Yecey3_59 Start: 38093, Stop: 37821, Start Num: 36

Candidate Starts for Yecey3_59:

(Start: 36 @38093 has 126 MA's), (Start: 40 @38084 has 49 MA's), (49, 38027), (54, 37991), (67, 37943), (71, 37925),

Gene: YellowPanda_9 Start: 6219, Stop: 5899, Start Num: 40

Candidate Starts for YellowPanda_9:

(Start: 40 @6219 has 49 MA's), (46, 6180), (47, 6168), (48, 6165), (73, 6000), (87, 5931),

Gene: Yvonnetastic_129 Start: 73454, Stop: 73753, Start Num: 35

Candidate Starts for Yvonnetastic_129:

(Start: 35 @73454 has 11 MA's), (47, 73514), (54, 73556), (57, 73565), (66, 73601), (72, 73631),

Gene: Zhengyi_9 Start: 6127, Stop: 5798, Start Num: 40

Candidate Starts for Zhengyi_9:

(Start: 40 @6127 has 49 MA's), (47, 6073), (62, 5974), (73, 5905), (77, 5881), (87, 5836),

Gene: Zimmer_55 Start: 39223, Stop: 38951, Start Num: 36

Candidate Starts for Zimmer_55:

(32, 39253), (Start: 36 @39223 has 126 MA's), (54, 39121), (67, 39073), (71, 39055), (73, 39043),