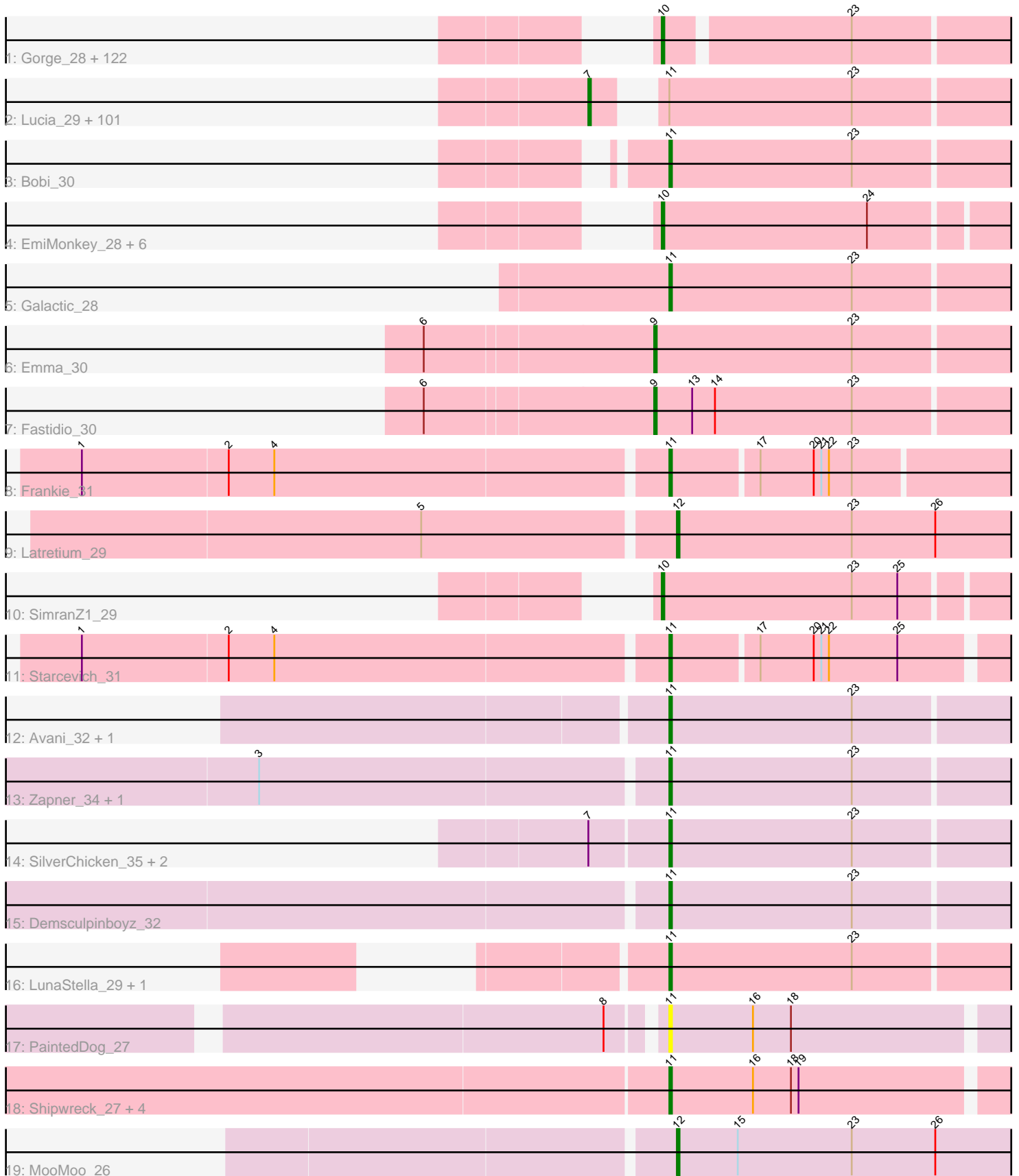


Pham 294397



Note: Tracks are now grouped by subcluster and scaled. Switching in subcluster is indicated by changes in track color. Track scale is now set by default to display the region 30 bp upstream of start 1 to 30 bp downstream of the last possible start. If this default region is judged to be packed too tightly with annotated starts, the track will be further scaled to only show that region of the ORF with annotated starts. This action will be indicated by adding "Zoomed" to the title. For starts, yellow indicates the location of called starts comprised solely of Glimmer/GeneMark auto-annotations, green indicates the location of called starts with at least 1 manual gene annotation.

Pham 294397 Report

This analysis was run 04/18/26 on database version 643.

Pham number 294397 has 257 members, 24 are drafts.

Phages represented in each track:

- Track 1 : Gorge_28, Karhdo_28, QuickMath_29, ByChance_28, Drago_29, Che8_30, Sparkdehlily_28, Saal_28, Chevrolet_28, CaptainTrips_29, BobaPhett_28, Lorde_29, SuperGrey_28, MulchExplorer_30, Leperchaun_28, TDanisky_28, MinionDave_29, Sandalphon_29, PMC_28, Cabrinians_28, Veteran_28, Modragons_28, CheesePuff_30, Pacc40_28, Daenerys_28, Ibhubesi_28, Phatniss_29, Rockne_28, Blexus_28, Ruby_28, OlympiaSaint_28, Ogopogo_28, Zizzle_28, James_28, LunaBlu_29, Mattes_28, Grimmer_30, Piper2020_30, Dante_28, Madiba_26, Clank_25, Mahavrat_28, Empress_29, FreddyB_28, Guppsters_29, BodEinwohner17_28, Mutaforma13_28, Nivrat_28, OldBen_28, Eradicator_28, Donkeykong_28, Boomer_29, Juniper1_28, Llij_28, ShowerHandel_28, Byougenkin_28, DRBy19_28, Scottish_29, Renaud18_28, AlpineSix_29, UncleRicky_31, Estave1_26, Seabastian_28, Sassafras_28, Okabe_28, Soul22_32, Kimberlium_30, Philus_28, Cornie_28, Rita_28, Kenuha5_25, Nichirin_29, Burwell21_28, RitaG_28, Nitzel_29, SiSi_28, Stap_29, ThetaBob_27, Jinglebell_27, DirtMcgirt_29, Whouxphf_28, Hamulus_28, DotProduct_28, Wachhund_28, Jarcob_28, Phasih_29, GUmbe_28, OfUltron_28, Sabbb_29, Martik_28, JoeyJr_28, MadMen_25, RedBird_28, Yorick_28, Nimbo_28, Totinger_29, MisterCuddles_28, Oksu_29, BlueCrab_28, KingMidas_29, Girr_28, Priscilla_28, Lizziana_28, Mantra_28, PHappiness_28, Llama_28, Doomphist_28, GigiOuiOui_28, Harley_28, LilMoolah_28, Poenanya_28, Whatsapiecost_28, ShiLan_28, NormanBulbieJr_28, Maravista_28, Radiance_28, Topiatin_31, ArcusAngelus_28, Spoonbill_28, SwagPigglett_28, Inventum_28, Chuckly_28, Pollywog_28
- Track 2 : Lucia_29, Fruitloop_27, Cornucopia_29, Seagreen_29, Vivum_28, Enby_29, SeaLumen_31, Polka14_29, DillTech15_28, XFactor_28, Awesomesauce_29, Filuzino_28, JalFarm20_30, Corium_28, Royals2015_28, Alexphander_30, Eish_28, Florinda_28, DoRead_28, Doug_29, Job42_31, Firehouse51_29, ShroomBoi_25, Doomslug_31, Aloeri_30, Mwanjiwa_28, Medindi_29, Tweety_28, IMpilo_27, Dorothy_28, NewHope4_30, Batiatus_28, MilleniumForce_29, Hlubikazi_28, Plumbus_29, DaWorst_30, WillSterrel_29, Blarby_36, Enzomatic_32, Hades_28, TootsiePop_29, Mandlovu_28, SassyB_28, DLane_28, Moonbeam_29, Phanphagia_25, Spikelee_29, Kingsley_26, Fancypants_28, DaddyRickover_28, Coco12_27, Melissauren88_28, Juice456_29, Brushbloom_29, Polo2Bam_32, KingJulian_28, Violac_29, Beakin_29, PopTart_28, Taj_28, Shauna1_25, Jant_29, Wee_29, Ovechkin_28, Strokeseat_28, DeadP_28, Mova_29, RockyHorror_29, Quico_29, SG4_28, Ramsey_29, ChickenDinner_30, Marker_29, Mozy_29, Geralt_28, Misha28_29, Tootsieroll_29, Hegedechwinu_29, Deb65_28, Leozinho_29, IrishSherpFalk_29, Brookers_26, Zerg_28, Girafales_29,

EleanorGeorge_28, DosHalletts_29, Gandolph_28, VRedHorse_28, Bubbles123_29, KristaRAM_29, BuzzLyseyear_30, Spartacus_29, DocMcStuffins_30, Phalconet_28, PhesterPhotato_28, PatoPoderoso_28, OwlsT2W_29, Flathead_28, IbOuu_29, Krakatau_29, Aubs_28, Bipolar_25

- Track 3 : Bobi_30
- Track 4 : EmiMonkey_28, Peridot_31, Slim_29, LittleShirley_29, Rialto_30, PhilipPhlop_28, Emmaloid_29
- Track 5 : Galactic_28
- Track 6 : Emma_30
- Track 7 : Fastidio_30
- Track 8 : Frankie_31
- Track 9 : Latretium_29
- Track 10 : SimranZ1_29
- Track 11 : Starcevich_31
- Track 12 : Avani_32, Che9d_32
- Track 13 : Zapner_34, Jabbawokkie_35
- Track 14 : SilverChicken_35, Minnie_29, Beanstalk_32
- Track 15 : Demsculpinboyz_32
- Track 16 : LunaStella_29, TChen_27
- Track 17 : PaintedDog_27
- Track 18 : Shipwreck_27, Brujita_28, Bogie_27, Island3_28, Pygmy_27
- Track 19 : MooMoo_26

Summary of Final Annotations (See graph section above for start numbers):

The start number called the most often in the published annotations is 10, it was called in 123 of the 233 non-draft genes in the pham.

Genes that call this "Most Annotated" start:

- AlpineSix_29, ArcusAngelus_28, Blexus_28, BlueCrab_28, BobaPhett_28, BodEinwohner17_28, Boomer_29, Burwell21_28, ByChance_28, Byougenkin_28, Cabrinians_28, CaptainTrips_29, Che8_30, CheesePuff_30, Chevrolet_28, Chuckly_28, Clank_25, Cornie_28, DRBy19_28, Daenerys_28, Dante_28, DirtMcGirt_29, Donkeykong_28, Doomphist_28, DotProduct_28, Drago_29, EmiMonkey_28, Emmaloid_29, Empress_29, Eradicator_28, Estave1_26, FreddyB_28, GUmbie_28, GigiOuiOui_28, Girr_28, Gorge_28, Grimmer_30, Guppsters_29, Hamulus_28, Harley_28, Ibhuesi_28, Inventum_28, James_28, Jarcob_28, Jinglebell_27, JoeyJr_28, Juniper1_28, Karhdo_28, Kenuha5_25, Kimberlium_30, KingMidas_29, Leperchaun_28, LilMoolah_28, LittleShirley_29, Lizziana_28, Llama_28, Lij_28, Lorde_29, LunaBlu_29, MadMen_25, Madiba_26, Mahavrat_28, Mantra_28, Maravista_28, Martik_28, Mattes_28, MinionDave_29, MisterCuddles_28, Modragons_28, MulchExplorer_30, Mutaforma13_28, Nichirin_29, Nimbo_28, Nitzel_29, Nivrat_28, NormanBulbieJr_28, OfUltron_28, OgoPogo_28, Okabe_28, Oksu_29, OldBen_28, OlympiaSaint_28, PHappiness_28, PMC_28, Pacc40_28, Peridot_31, Phasih_29, Phatniss_29, Philus_28, PhilipPhlop_28, Piper2020_30, Poenanya_28, Pollywog_28, Priscilla_28, QuickMath_29, Radiance_28, RedBird_28, Renaud18_28, Rialto_30, RitaG_28, Rita_28, Rockne_28, Ruby_28, Saal_28, Sabbb_29, Sandalphon_29, Sassafras_28, Scottish_29, Sebastian_28, ShiLan_28, ShowerHandel_28, SiSi_28, SimranZ1_29, Slim_29, Soul22_32, Sparkdehlily_28, Spoonbill_28, Stap_29, SuperGrey_28,

SwagPiggett_28, TDanisky_28, ThetaBob_27, Topiatin_31, Totinger_29, UncleRicky_31, Veteran_28, Wachhund_28, Whatsapiecost_28, Whouxphf_28, Yorick_28, Zizzle_28,

Genes that have the "Most Annotated" start but do not call it:

-

Genes that do not have the "Most Annotated" start:

- Alexphander_30, Aloeri_30, Aubs_28, Avani_32, Awesomesauce_29, Batiatus_28, Beakin_29, Beanstalk_32, Bipolar_25, Blarby_36, Bobi_30, Bogie_27, Brookers_26, Brujita_28, Brushbloom_29, Bubbles123_29, BuzzLyseyear_30, Che9d_32, ChickenDinner_30, Coco12_27, Corium_28, Cornucopia_29, DLane_28, DaWorst_30, DaddyRickover_28, DeadP_28, Deb65_28, Demsculpinboyz_32, DillTech15_28, DoRead_28, DocMcStuffins_30, Doomslug_31, Dorothy_28, DosHalletts_29, Doug_29, Eish_28, EleanorGeorge_28, Emma_30, Enby_29, Enzomatic_32, Fancypants_28, Fastidio_30, Filuzino_28, Firehouse51_29, Flathead_28, Florinda_28, Frankie_31, Fruitloop_27, Galactic_28, Gandolph_28, Geralt_28, Girafales_29, Hades_28, Hegedechwinu_29, Hlubikazi_28, IMPilo_27, IbOuu_29, IrishSherpFalk_29, Island3_28, Jabbawokkie_35, JalFarm20_30, Jant_29, Job42_31, Juice456_29, KingJulian_28, Kingsley_26, Krakatau_29, KristaRAM_29, Latretium_29, Leozinho_29, Lucia_29, LunaStella_29, Mandlovu_28, Marker_29, Medindi_29, Melissauren88_28, MilleniumForce_29, Minnie_29, Misha28_29, MooMoo_26, Moonbeam_29, Mova_29, Mozy_29, Mwanjiwa_28, NewHope4_30, Ovechkin_28, OwlsT2W_29, PaintedDog_27, PatoPoderoso_28, Phalconet_28, Phanphagia_25, PhesterPhotato_28, Plumbus_29, Polka14_29, Polo2Bam_32, PopTart_28, Pygmy_27, Quico_29, Ramsey_29, RockyHorror_29, Royals2015_28, SG4_28, SassyB_28, SeaLumen_31, Seagreen_29, Shauna1_25, Shipwreck_27, ShroomBoi_25, SilverChicken_35, Spartacus_29, Spikelee_29, Starcevich_31, Strokeseat_28, TChen_27, Taj_28, TootsiePop_29, Tootsieroll_29, Tweety_28, VRedHorse_28, Violac_29, Vivum_28, Wee_29, WillSterrel_29, XFactor_28, Zapner_34, Zerg_28,

Summary by start number:

Start 7:

- Found in 105 of 257 (40.9%) of genes in pham
- Manual Annotations of this start: 89 of 233
- Called 97.1% of time when present
- Phage (with cluster) where this start called: Alexphander_30 (F1), Aloeri_30 (F1), Aubs_28 (F1), Awesomesauce_29 (F1), Batiatus_28 (F1), Beakin_29 (F1), Bipolar_25 (F1), Blarby_36 (F), Brookers_26 (F1), Brushbloom_29 (F1), Bubbles123_29 (F1), BuzzLyseyear_30 (F1), ChickenDinner_30 (F1), Coco12_27 (F1), Corium_28 (F1), Cornucopia_29 (F1), DLane_28 (F1), DaWorst_30 (F1), DaddyRickover_28 (F1), DeadP_28 (F1), Deb65_28 (F1), DillTech15_28 (F1), DoRead_28 (F1), DocMcStuffins_30 (F1), Doomslug_31 (F), Dorothy_28 (F1), DosHalletts_29 (F1), Doug_29 (F1), Eish_28 (F1), EleanorGeorge_28 (F1), Enby_29 (F1), Enzomatic_32 (F1), Fancypants_28 (F1), Filuzino_28 (F1), Firehouse51_29 (F1), Flathead_28 (F1), Florinda_28 (F1), Fruitloop_27 (F1), Gandolph_28 (F1), Geralt_28 (F1), Girafales_29 (F1), Hades_28 (F1), Hegedechwinu_29 (F1), Hlubikazi_28 (F1), IMPilo_27 (F1), IbOuu_29 (F1), IrishSherpFalk_29 (F1), JalFarm20_30 (F1), Jant_29 (F1), Job42_31 (F1), Juice456_29 (F1), KingJulian_28 (F1), Kingsley_26 (F1), Krakatau_29 (F1), KristaRAM_29 (F1), Leozinho_29 (F1), Lucia_29 (F1), Mandlovu_28 (F1), Marker_29 (F1), Medindi_29 (F1),

Melissauren88_28 (F1), MilleniumForce_29 (F1), Misha28_29 (F1), Moonbeam_29 (F1), Mova_29 (F1), Mozy_29 (F1), Mwanjiwa_28 (F1), NewHope4_30 (F1), Ovechkin_28 (F1), OwlsT2W_29 (F1), PatoPoderoso_28 (F1), Phalconet_28 (F1), Phanphagia_25 (F1), PhesterPhotato_28 (F1), Plumbus_29 (F1), Polka14_29 (F1), Polo2Bam_32 (F1), PopTart_28 (F1), Quico_29 (F1), Ramsey_29 (F1), RockyHorror_29 (F1), Royals2015_28 (F1), SG4_28 (F1), SassyB_28 (F1), SeaLumen_31 (F1), Seagreen_29 (F1), Shauna1_25 (F1), ShroomBoi_25 (F1), Spartacus_29 (F1), Spikelee_29 (F1), Strokeseat_28 (F1), Taj_28 (F1), TootsiePop_29 (F1), Tootsieroll_29 (F1), Tweety_28 (F1), VRedHorse_28 (F1), Violac_29 (F1), Vivum_28 (F1), Wee_29 (F1), WillSterrel_29 (F1), XFactor_28 (F1), Zerg_28 (F1),

Start 9:

- Found in 2 of 257 (0.8%) of genes in pham
- Manual Annotations of this start: 2 of 233
- Called 100.0% of time when present
- Phage (with cluster) where this start called: Emma_30 (F1), Fastidio_30 (F1),

Start 10:

- Found in 131 of 257 (51.0%) of genes in pham
- Manual Annotations of this start: 123 of 233
- Called 100.0% of time when present
- Phage (with cluster) where this start called: AlpineSix_29 (F1), ArcusAngelus_28 (F1), Blexus_28 (F1), BlueCrab_28 (F1), BobaPhett_28 (F1), BodEinwohner17_28 (F1), Boomer_29 (F1), Burwell21_28 (F1), ByChance_28 (F1), Byougenkin_28 (F1), Cabrinians_28 (F1), CaptainTrips_29 (F1), Che8_30 (F1), Cheesepuff_30 (F1), Chevrolet_28 (F1), Chuckly_28 (F1), Clank_25 (F1), Cornie_28 (F5), DRBy19_28 (F1), Daenerys_28 (F1), Dante_28 (F1), DirtMcGirt_29 (F1), Donkeykong_28 (F1), Doomphist_28 (F1), DotProduct_28 (F1), Drago_29 (F1), EmiMonkey_28 (F1), Emmaloid_29 (F1), Empress_29 (F1), Eradicator_28 (F1), Estave1_26 (F1), FreddyB_28 (F1), GUmbie_28 (F1), GigiOuiOui_28 (F1), Girr_28 (F1), Gorge_28 (F1), Grimmer_30 (F1), Guppsters_29 (F1), Hamulus_28 (F1), Harley_28 (F1), Ibhubesi_28 (F1), Inventum_28 (F1), James_28 (F1), Jarcob_28 (F1), Jinglebell_27 (F1), JoeyJr_28 (F1), Juniper1_28 (F1), Karhdo_28 (F1), Kenuha5_25 (F1), Kimberlium_30 (F1), KingMidas_29 (F1), Leperchaun_28 (F1), LilMoolah_28 (F1), LittleShirley_29 (F1), Lizziana_28 (F1), Llama_28 (F1), Llij_28 (F1), Lorde_29 (F1), LunaBlu_29 (F1), MadMen_25 (F1), Madiba_26 (F1), Mahavrat_28 (F1), Mantra_28 (F1), Maravista_28 (F1), Martik_28 (F1), Mattes_28 (F1), MinionDave_29 (F1), MisterCuddles_28 (F1), Modragons_28 (F1), MulchExplorer_30 (F1), Mutaforma13_28 (F1), Nichirin_29 (F1), Nimbo_28 (F1), Nitzel_29 (F1), Nivrat_28 (F1), NormanBulbieJr_28 (F1), OfUltron_28 (F1), Ogoopogo_28 (F1), Okabe_28 (F8), Oksu_29 (F1), OldBen_28 (F1), OlympiaSaint_28 (F1), PHappiness_28 (F1), PMC_28 (F1), Pacc40_28 (F1), Peridot_31 (F1), Phasih_29 (F1), Phatniss_29 (F1), Philus_28 (F1), PhilipPhlop_28 (F1), Piper2020_30 (F1), Poenanya_28 (F1), Pollywog_28 (F1), Priscilla_28 (F1), QuickMath_29 (F1), Radiance_28 (F1), RedBird_28 (F1), Renaud18_28 (F4), Rialto_30 (F1), RitaG_28 (F1), Rita_28 (F1), Rockne_28 (F1), Ruby_28 (F1), Saal_28 (F1), Sabbb_29 (F1), Sandalphon_29 (F1), Sassafras_28 (F1), Scottish_29 (F1), Seabastian_28 (F1), ShiLan_28 (F1), ShowerHandel_28 (F1), SiSi_28 (F1), SimranZ1_29 (F1), Slim_29 (F1), Soul22_32 (F2), Sparkdehlily_28 (F1), Spoonbill_28 (F1), Stap_29 (F1), SuperGrey_28 (F1), SwagPiggett_28 (F1), TDanisky_28 (F1), ThetaBob_27 (F4), Topiatin_31 (F1), Totinger_29 (F1), UncleRicky_31 (F1), Veteran_28 (F1), Wachhund_28 (F1), Whatsapiecost_28 (F1), Whouxphf_28 (F1), Yorick_28 (F1), Zizzle_28 (F1),

Start 11:

- Found in 122 of 257 (47.5%) of genes in pham
- Manual Annotations of this start: 17 of 233
- Called 16.4% of time when present
- Phage (with cluster) where this start called: Avani_32 (F2), Beanstalk_32 (F1), Bobi_30 (F1), Bogie_27 (P1), Brujita_28 (I1), Che9d_32 (F2), Demsculpinboyz_32 (F2), Frankie_31 (F1), Galactic_28 (F1), Island3_28 (I1), Jabbawokkie_35 (F2), LunaStella_29 (F4), Minnie_29 (F1), PaintedDog_27 (I1), Pygmy_27 (P1), Shipwreck_27 (P1), SilverChicken_35 (F2), Starceвич_31 (F1), TChen_27 (F4), Zapner_34 (F2),

Start 12:

- Found in 2 of 257 (0.8%) of genes in pham
- Manual Annotations of this start: 2 of 233
- Called 100.0% of time when present
- Phage (with cluster) where this start called: Latretium_29 (F1), MooMoo_26 (singleton),

Summary by clusters:

There are 9 clusters represented in this pham: F1, F2, P1, F4, F5, F, I1, singleton, F8,

Info for manual annotations of cluster F1:

- Start number 7 was manually annotated 89 times for cluster F1.
- Start number 9 was manually annotated 2 times for cluster F1.
- Start number 10 was manually annotated 119 times for cluster F1.
- Start number 11 was manually annotated 5 times for cluster F1.
- Start number 12 was manually annotated 1 time for cluster F1.

Info for manual annotations of cluster F2:

- Start number 10 was manually annotated 1 time for cluster F2.
- Start number 11 was manually annotated 5 times for cluster F2.

Info for manual annotations of cluster F4:

- Start number 10 was manually annotated 2 times for cluster F4.
- Start number 11 was manually annotated 2 times for cluster F4.

Info for manual annotations of cluster F5:

- Start number 10 was manually annotated 1 time for cluster F5.

Info for manual annotations of cluster I1:

- Start number 11 was manually annotated 2 times for cluster I1.

Info for manual annotations of cluster P1:

- Start number 11 was manually annotated 3 times for cluster P1.

Gene Information:

Gene: Alexphander_30 Start: 26399, Stop: 26551, Start Num: 7
Candidate Starts for Alexphander_30:
(Start: 7 @26399 has 89 MA's), (Start: 11 @26414 has 17 MA's), (23, 26486),

Gene: Aloeri_30 Start: 26467, Stop: 26634, Start Num: 7
Candidate Starts for Aloeri_30:
(Start: 7 @26467 has 89 MA's), (Start: 11 @26497 has 17 MA's), (23, 26569),

Gene: AlpineSix_29 Start: 26099, Stop: 26239, Start Num: 10
Candidate Starts for AlpineSix_29:
(Start: 10 @26099 has 123 MA's), (23, 26174),

Gene: ArcusAngelus_28 Start: 25871, Stop: 26011, Start Num: 10
Candidate Starts for ArcusAngelus_28:
(Start: 10 @25871 has 123 MA's), (23, 25946),

Gene: Aubs_28 Start: 26001, Stop: 26168, Start Num: 7
Candidate Starts for Aubs_28:
(Start: 7 @26001 has 89 MA's), (Start: 11 @26031 has 17 MA's), (23, 26103),

Gene: Avani_32 Start: 24801, Stop: 24938, Start Num: 11
Candidate Starts for Avani_32:
(Start: 11 @24801 has 17 MA's), (23, 24873),

Gene: Awesomesauce_29 Start: 25741, Stop: 25893, Start Num: 7
Candidate Starts for Awesomesauce_29:
(Start: 7 @25741 has 89 MA's), (Start: 11 @25756 has 17 MA's), (23, 25828),

Gene: Batiatus_28 Start: 25899, Stop: 26051, Start Num: 7
Candidate Starts for Batiatus_28:
(Start: 7 @25899 has 89 MA's), (Start: 11 @25914 has 17 MA's), (23, 25986),

Gene: Beakin_29 Start: 25768, Stop: 25920, Start Num: 7
Candidate Starts for Beakin_29:
(Start: 7 @25768 has 89 MA's), (Start: 11 @25783 has 17 MA's), (23, 25855),

Gene: Beanstalk_32 Start: 26059, Stop: 26196, Start Num: 11
Candidate Starts for Beanstalk_32:
(Start: 7 @26029 has 89 MA's), (Start: 11 @26059 has 17 MA's), (23, 26131),

Gene: Bipolar_25 Start: 24931, Stop: 25083, Start Num: 7
Candidate Starts for Bipolar_25:
(Start: 7 @24931 has 89 MA's), (Start: 11 @24946 has 17 MA's), (23, 25018),

Gene: Blarby_36 Start: 26306, Stop: 26470, Start Num: 7
Candidate Starts for Blarby_36:
(Start: 7 @26306 has 89 MA's), (Start: 11 @26333 has 17 MA's), (23, 26405),

Gene: Blexus_28 Start: 26193, Stop: 26327, Start Num: 10
Candidate Starts for Blexus_28:
(Start: 10 @26193 has 123 MA's), (23, 26262),

Gene: BlueCrab_28 Start: 26057, Stop: 26197, Start Num: 10

Candidate Starts for BlueCrab_28:
(Start: 10 @26057 has 123 MA's), (23, 26132),

Gene: BobaPhett_28 Start: 26045, Stop: 26179, Start Num: 10
Candidate Starts for BobaPhett_28:
(Start: 10 @26045 has 123 MA's), (23, 26114),

Gene: Bobi_30 Start: 26629, Stop: 26766, Start Num: 11
Candidate Starts for Bobi_30:
(Start: 11 @26629 has 17 MA's), (23, 26701),

Gene: BodEinwohner17_28 Start: 26197, Stop: 26337, Start Num: 10
Candidate Starts for BodEinwohner17_28:
(Start: 10 @26197 has 123 MA's), (23, 26272),

Gene: Bogie_27 Start: 24738, Stop: 24872, Start Num: 11
Candidate Starts for Bogie_27:
(Start: 11 @24738 has 17 MA's), (16, 24771), (18, 24786), (19, 24789),

Gene: Boomer_29 Start: 25673, Stop: 25813, Start Num: 10
Candidate Starts for Boomer_29:
(Start: 10 @25673 has 123 MA's), (23, 25748),

Gene: Brookers_26 Start: 24833, Stop: 25000, Start Num: 7
Candidate Starts for Brookers_26:
(Start: 7 @24833 has 89 MA's), (Start: 11 @24863 has 17 MA's), (23, 24935),

Gene: Brujita_28 Start: 25093, Stop: 25227, Start Num: 11
Candidate Starts for Brujita_28:
(Start: 11 @25093 has 17 MA's), (16, 25126), (18, 25141), (19, 25144),

Gene: Brushbloom_29 Start: 25908, Stop: 26075, Start Num: 7
Candidate Starts for Brushbloom_29:
(Start: 7 @25908 has 89 MA's), (Start: 11 @25938 has 17 MA's), (23, 26010),

Gene: Bubbles123_29 Start: 26579, Stop: 26746, Start Num: 7
Candidate Starts for Bubbles123_29:
(Start: 7 @26579 has 89 MA's), (Start: 11 @26609 has 17 MA's), (23, 26681),

Gene: Burwell21_28 Start: 26064, Stop: 26204, Start Num: 10
Candidate Starts for Burwell21_28:
(Start: 10 @26064 has 123 MA's), (23, 26139),

Gene: BuzzLyseyear_30 Start: 26410, Stop: 26577, Start Num: 7
Candidate Starts for BuzzLyseyear_30:
(Start: 7 @26410 has 89 MA's), (Start: 11 @26440 has 17 MA's), (23, 26512),

Gene: ByChance_28 Start: 26041, Stop: 26181, Start Num: 10
Candidate Starts for ByChance_28:
(Start: 10 @26041 has 123 MA's), (23, 26116),

Gene: Byougenkin_28 Start: 25893, Stop: 26033, Start Num: 10
Candidate Starts for Byougenkin_28:

(Start: 10 @25893 has 123 MA's), (23, 25968),

Gene: Cabrinians_28 Start: 26073, Stop: 26207, Start Num: 10

Candidate Starts for Cabrinians_28:

(Start: 10 @26073 has 123 MA's), (23, 26142),

Gene: CaptainTrips_29 Start: 26266, Stop: 26406, Start Num: 10

Candidate Starts for CaptainTrips_29:

(Start: 10 @26266 has 123 MA's), (23, 26341),

Gene: Che8_30 Start: 26247, Stop: 26387, Start Num: 10

Candidate Starts for Che8_30:

(Start: 10 @26247 has 123 MA's), (23, 26322),

Gene: Che9d_32 Start: 24809, Stop: 24946, Start Num: 11

Candidate Starts for Che9d_32:

(Start: 11 @24809 has 17 MA's), (23, 24881),

Gene: Cheesepuff_30 Start: 26888, Stop: 27028, Start Num: 10

Candidate Starts for Cheesepuff_30:

(Start: 10 @26888 has 123 MA's), (23, 26963),

Gene: Chevrolet_28 Start: 25872, Stop: 26012, Start Num: 10

Candidate Starts for Chevrolet_28:

(Start: 10 @25872 has 123 MA's), (23, 25947),

Gene: ChickenDinner_30 Start: 26467, Stop: 26634, Start Num: 7

Candidate Starts for ChickenDinner_30:

(Start: 7 @26467 has 89 MA's), (Start: 11 @26497 has 17 MA's), (23, 26569),

Gene: Chuckly_28 Start: 26043, Stop: 26183, Start Num: 10

Candidate Starts for Chuckly_28:

(Start: 10 @26043 has 123 MA's), (23, 26118),

Gene: Clank_25 Start: 25080, Stop: 25220, Start Num: 10

Candidate Starts for Clank_25:

(Start: 10 @25080 has 123 MA's), (23, 25155),

Gene: Coco12_27 Start: 25374, Stop: 25541, Start Num: 7

Candidate Starts for Coco12_27:

(Start: 7 @25374 has 89 MA's), (Start: 11 @25404 has 17 MA's), (23, 25476),

Gene: Corium_28 Start: 26064, Stop: 26216, Start Num: 7

Candidate Starts for Corium_28:

(Start: 7 @26064 has 89 MA's), (Start: 11 @26079 has 17 MA's), (23, 26151),

Gene: Cornie_28 Start: 26284, Stop: 26424, Start Num: 10

Candidate Starts for Cornie_28:

(Start: 10 @26284 has 123 MA's), (23, 26359),

Gene: Cornucopia_29 Start: 25927, Stop: 26079, Start Num: 7

Candidate Starts for Cornucopia_29:

(Start: 7 @25927 has 89 MA's), (Start: 11 @25942 has 17 MA's), (23, 26014),

Gene: DLane_28 Start: 25876, Stop: 26028, Start Num: 7
Candidate Starts for DLane_28:
(Start: 7 @25876 has 89 MA's), (Start: 11 @25891 has 17 MA's), (23, 25963),

Gene: DRBy19_28 Start: 25915, Stop: 26049, Start Num: 10
Candidate Starts for DRBy19_28:
(Start: 10 @25915 has 123 MA's), (23, 25984),

Gene: DaWorst_30 Start: 26406, Stop: 26558, Start Num: 7
Candidate Starts for DaWorst_30:
(Start: 7 @26406 has 89 MA's), (Start: 11 @26421 has 17 MA's), (23, 26493),

Gene: DaddyRickover_28 Start: 26046, Stop: 26198, Start Num: 7
Candidate Starts for DaddyRickover_28:
(Start: 7 @26046 has 89 MA's), (Start: 11 @26061 has 17 MA's), (23, 26133),

Gene: Daenerys_28 Start: 25889, Stop: 26029, Start Num: 10
Candidate Starts for Daenerys_28:
(Start: 10 @25889 has 123 MA's), (23, 25964),

Gene: Dante_28 Start: 25935, Stop: 26069, Start Num: 10
Candidate Starts for Dante_28:
(Start: 10 @25935 has 123 MA's), (23, 26004),

Gene: DeadP_28 Start: 26058, Stop: 26225, Start Num: 7
Candidate Starts for DeadP_28:
(Start: 7 @26058 has 89 MA's), (Start: 11 @26088 has 17 MA's), (23, 26160),

Gene: Deb65_28 Start: 25873, Stop: 26025, Start Num: 7
Candidate Starts for Deb65_28:
(Start: 7 @25873 has 89 MA's), (Start: 11 @25888 has 17 MA's), (23, 25960),

Gene: Demsculpinboyz_32 Start: 24795, Stop: 24932, Start Num: 11
Candidate Starts for Demsculpinboyz_32:
(Start: 11 @24795 has 17 MA's), (23, 24867),

Gene: DillTech15_28 Start: 25893, Stop: 26060, Start Num: 7
Candidate Starts for DillTech15_28:
(Start: 7 @25893 has 89 MA's), (Start: 11 @25923 has 17 MA's), (23, 25995),

Gene: DirtMcgirt_29 Start: 25712, Stop: 25852, Start Num: 10
Candidate Starts for DirtMcgirt_29:
(Start: 10 @25712 has 123 MA's), (23, 25787),

Gene: DoRead_28 Start: 25871, Stop: 26023, Start Num: 7
Candidate Starts for DoRead_28:
(Start: 7 @25871 has 89 MA's), (Start: 11 @25886 has 17 MA's), (23, 25958),

Gene: DocMcStuffins_30 Start: 26467, Stop: 26634, Start Num: 7
Candidate Starts for DocMcStuffins_30:
(Start: 7 @26467 has 89 MA's), (Start: 11 @26497 has 17 MA's), (23, 26569),

Gene: Donkeykong_28 Start: 26059, Stop: 26199, Start Num: 10
Candidate Starts for Donkeykong_28:
(Start: 10 @26059 has 123 MA's), (23, 26134),

Gene: Doomphist_28 Start: 25998, Stop: 26138, Start Num: 10
Candidate Starts for Doomphist_28:
(Start: 10 @25998 has 123 MA's), (23, 26073),

Gene: Doomslug_31 Start: 25732, Stop: 25899, Start Num: 7
Candidate Starts for Doomslug_31:
(Start: 7 @25732 has 89 MA's), (Start: 11 @25762 has 17 MA's), (23, 25834),

Gene: Dorothy_28 Start: 25831, Stop: 25983, Start Num: 7
Candidate Starts for Dorothy_28:
(Start: 7 @25831 has 89 MA's), (Start: 11 @25846 has 17 MA's), (23, 25918),

Gene: DosHalletts_29 Start: 25988, Stop: 26140, Start Num: 7
Candidate Starts for DosHalletts_29:
(Start: 7 @25988 has 89 MA's), (Start: 11 @26003 has 17 MA's), (23, 26075),

Gene: DotProduct_28 Start: 25865, Stop: 26005, Start Num: 10
Candidate Starts for DotProduct_28:
(Start: 10 @25865 has 123 MA's), (23, 25940),

Gene: Doug_29 Start: 26423, Stop: 26575, Start Num: 7
Candidate Starts for Doug_29:
(Start: 7 @26423 has 89 MA's), (Start: 11 @26438 has 17 MA's), (23, 26510),

Gene: Drago_29 Start: 25698, Stop: 25838, Start Num: 10
Candidate Starts for Drago_29:
(Start: 10 @25698 has 123 MA's), (23, 25773),

Gene: Eish_28 Start: 26011, Stop: 26163, Start Num: 7
Candidate Starts for Eish_28:
(Start: 7 @26011 has 89 MA's), (Start: 11 @26026 has 17 MA's), (23, 26098),

Gene: EleanorGeorge_28 Start: 26166, Stop: 26333, Start Num: 7
Candidate Starts for EleanorGeorge_28:
(Start: 7 @26166 has 89 MA's), (Start: 11 @26196 has 17 MA's), (23, 26268),

Gene: EmiMonkey_28 Start: 25960, Stop: 26097, Start Num: 10
Candidate Starts for EmiMonkey_28:
(Start: 10 @25960 has 123 MA's), (24, 26041),

Gene: Emma_30 Start: 26455, Stop: 26598, Start Num: 9
Candidate Starts for Emma_30:
(6, 26395), (Start: 9 @26455 has 2 MA's), (23, 26533),

Gene: Emmaloid_29 Start: 25807, Stop: 25944, Start Num: 10
Candidate Starts for Emmaloid_29:
(Start: 10 @25807 has 123 MA's), (24, 25888),

Gene: Empress_29 Start: 27231, Stop: 27365, Start Num: 10

Candidate Starts for Empress_29:
(Start: 10 @27231 has 123 MA's), (23, 27300),

Gene: Enby_29 Start: 25696, Stop: 25863, Start Num: 7
Candidate Starts for Enby_29:
(Start: 7 @25696 has 89 MA's), (Start: 11 @25726 has 17 MA's), (23, 25798),

Gene: Enzomatic_32 Start: 26049, Stop: 26201, Start Num: 7
Candidate Starts for Enzomatic_32:
(Start: 7 @26049 has 89 MA's), (Start: 11 @26064 has 17 MA's), (23, 26136),

Gene: Eradicator_28 Start: 25919, Stop: 26059, Start Num: 10
Candidate Starts for Eradicator_28:
(Start: 10 @25919 has 123 MA's), (23, 25994),

Gene: Estave1_26 Start: 25327, Stop: 25467, Start Num: 10
Candidate Starts for Estave1_26:
(Start: 10 @25327 has 123 MA's), (23, 25402),

Gene: Fancypants_28 Start: 25879, Stop: 26031, Start Num: 7
Candidate Starts for Fancypants_28:
(Start: 7 @25879 has 89 MA's), (Start: 11 @25894 has 17 MA's), (23, 25966),

Gene: Fastidio_30 Start: 26198, Stop: 26341, Start Num: 9
Candidate Starts for Fastidio_30:
(6, 26138), (Start: 9 @26198 has 2 MA's), (13, 26213), (14, 26222), (23, 26276),

Gene: Filuzino_28 Start: 25868, Stop: 26020, Start Num: 7
Candidate Starts for Filuzino_28:
(Start: 7 @25868 has 89 MA's), (Start: 11 @25883 has 17 MA's), (23, 25955),

Gene: Firehouse51_29 Start: 26590, Stop: 26742, Start Num: 7
Candidate Starts for Firehouse51_29:
(Start: 7 @26590 has 89 MA's), (Start: 11 @26605 has 17 MA's), (23, 26677),

Gene: Flathead_28 Start: 25891, Stop: 26058, Start Num: 7
Candidate Starts for Flathead_28:
(Start: 7 @25891 has 89 MA's), (Start: 11 @25921 has 17 MA's), (23, 25993),

Gene: Florinda_28 Start: 25889, Stop: 26032, Start Num: 7
Candidate Starts for Florinda_28:
(Start: 7 @25889 has 89 MA's), (Start: 11 @25895 has 17 MA's), (23, 25967),

Gene: Frankie_31 Start: 26420, Stop: 26554, Start Num: 11
Candidate Starts for Frankie_31:
(1, 26195), (2, 26252), (4, 26270), (Start: 11 @26420 has 17 MA's), (17, 26453), (20, 26474), (21, 26477), (22, 26480), (23, 26489),

Gene: FreddyB_28 Start: 26082, Stop: 26216, Start Num: 10
Candidate Starts for FreddyB_28:
(Start: 10 @26082 has 123 MA's), (23, 26151),

Gene: Fruitloop_27 Start: 26062, Stop: 26214, Start Num: 7

Candidate Starts for Fruitloop_27:
(Start: 7 @26062 has 89 MA's), (Start: 11 @26077 has 17 MA's), (23, 26149),

Gene: GUmbie_28 Start: 25894, Stop: 26034, Start Num: 10
Candidate Starts for GUmbie_28:
(Start: 10 @25894 has 123 MA's), (23, 25969),

Gene: Galactic_28 Start: 25877, Stop: 26014, Start Num: 11
Candidate Starts for Galactic_28:
(Start: 11 @25877 has 17 MA's), (23, 25949),

Gene: Gandalph_28 Start: 25972, Stop: 26124, Start Num: 7
Candidate Starts for Gandalph_28:
(Start: 7 @25972 has 89 MA's), (Start: 11 @25987 has 17 MA's), (23, 26059),

Gene: Geralt_28 Start: 25872, Stop: 26024, Start Num: 7
Candidate Starts for Geralt_28:
(Start: 7 @25872 has 89 MA's), (Start: 11 @25887 has 17 MA's), (23, 25959),

Gene: GigiOuiOui_28 Start: 26018, Stop: 26158, Start Num: 10
Candidate Starts for GigiOuiOui_28:
(Start: 10 @26018 has 123 MA's), (23, 26093),

Gene: Girafales_29 Start: 25697, Stop: 25840, Start Num: 7
Candidate Starts for Girafales_29:
(Start: 7 @25697 has 89 MA's), (Start: 11 @25703 has 17 MA's), (23, 25775),

Gene: Girr_28 Start: 25857, Stop: 25991, Start Num: 10
Candidate Starts for Girr_28:
(Start: 10 @25857 has 123 MA's), (23, 25926),

Gene: Gorge_28 Start: 26049, Stop: 26183, Start Num: 10
Candidate Starts for Gorge_28:
(Start: 10 @26049 has 123 MA's), (23, 26118),

Gene: Grimmer_30 Start: 26613, Stop: 26753, Start Num: 10
Candidate Starts for Grimmer_30:
(Start: 10 @26613 has 123 MA's), (23, 26688),

Gene: Guppsters_29 Start: 26159, Stop: 26299, Start Num: 10
Candidate Starts for Guppsters_29:
(Start: 10 @26159 has 123 MA's), (23, 26234),

Gene: Hades_28 Start: 25964, Stop: 26116, Start Num: 7
Candidate Starts for Hades_28:
(Start: 7 @25964 has 89 MA's), (Start: 11 @25979 has 17 MA's), (23, 26051),

Gene: Hamulus_28 Start: 26041, Stop: 26181, Start Num: 10
Candidate Starts for Hamulus_28:
(Start: 10 @26041 has 123 MA's), (23, 26116),

Gene: Harley_28 Start: 25828, Stop: 25968, Start Num: 10
Candidate Starts for Harley_28:

(Start: 10 @25828 has 123 MA's), (23, 25903),

Gene: Hegedechwinu_29 Start: 25873, Stop: 26040, Start Num: 7

Candidate Starts for Hegedechwinu_29:

(Start: 7 @25873 has 89 MA's), (Start: 11 @25903 has 17 MA's), (23, 25975),

Gene: Hlubikazi_28 Start: 26131, Stop: 26283, Start Num: 7

Candidate Starts for Hlubikazi_28:

(Start: 7 @26131 has 89 MA's), (Start: 11 @26146 has 17 MA's), (23, 26218),

Gene: IMpilo_27 Start: 25655, Stop: 25807, Start Num: 7

Candidate Starts for IMpilo_27:

(Start: 7 @25655 has 89 MA's), (Start: 11 @25670 has 17 MA's), (23, 25742),

Gene: IbOuu_29 Start: 25887, Stop: 26039, Start Num: 7

Candidate Starts for IbOuu_29:

(Start: 7 @25887 has 89 MA's), (Start: 11 @25902 has 17 MA's), (23, 25974),

Gene: Ibhubesi_28 Start: 25835, Stop: 25975, Start Num: 10

Candidate Starts for Ibhubesi_28:

(Start: 10 @25835 has 123 MA's), (23, 25910),

Gene: Inventum_28 Start: 26013, Stop: 26147, Start Num: 10

Candidate Starts for Inventum_28:

(Start: 10 @26013 has 123 MA's), (23, 26082),

Gene: IrishSherpFalk_29 Start: 27208, Stop: 27375, Start Num: 7

Candidate Starts for IrishSherpFalk_29:

(Start: 7 @27208 has 89 MA's), (Start: 11 @27238 has 17 MA's), (23, 27310),

Gene: Island3_28 Start: 25093, Stop: 25227, Start Num: 11

Candidate Starts for Island3_28:

(Start: 11 @25093 has 17 MA's), (16, 25126), (18, 25141), (19, 25144),

Gene: Jabbawokkie_35 Start: 26242, Stop: 26379, Start Num: 11

Candidate Starts for Jabbawokkie_35:

(3, 26086), (Start: 11 @26242 has 17 MA's), (23, 26314),

Gene: JalFarm20_30 Start: 26395, Stop: 26562, Start Num: 7

Candidate Starts for JalFarm20_30:

(Start: 7 @26395 has 89 MA's), (Start: 11 @26425 has 17 MA's), (23, 26497),

Gene: James_28 Start: 26045, Stop: 26179, Start Num: 10

Candidate Starts for James_28:

(Start: 10 @26045 has 123 MA's), (23, 26114),

Gene: Jant_29 Start: 26025, Stop: 26192, Start Num: 7

Candidate Starts for Jant_29:

(Start: 7 @26025 has 89 MA's), (Start: 11 @26055 has 17 MA's), (23, 26127),

Gene: Jarcob_28 Start: 26080, Stop: 26214, Start Num: 10

Candidate Starts for Jarcob_28:

(Start: 10 @26080 has 123 MA's), (23, 26149),

Gene: Jinglebell_27 Start: 26098, Stop: 26238, Start Num: 10

Candidate Starts for Jinglebell_27:

(Start: 10 @26098 has 123 MA's), (23, 26173),

Gene: Job42_31 Start: 27602, Stop: 27754, Start Num: 7

Candidate Starts for Job42_31:

(Start: 7 @27602 has 89 MA's), (Start: 11 @27617 has 17 MA's), (23, 27689),

Gene: JoeyJr_28 Start: 26057, Stop: 26197, Start Num: 10

Candidate Starts for JoeyJr_28:

(Start: 10 @26057 has 123 MA's), (23, 26132),

Gene: Juice456_29 Start: 27144, Stop: 27311, Start Num: 7

Candidate Starts for Juice456_29:

(Start: 7 @27144 has 89 MA's), (Start: 11 @27174 has 17 MA's), (23, 27246),

Gene: Juniper1_28 Start: 25857, Stop: 25997, Start Num: 10

Candidate Starts for Juniper1_28:

(Start: 10 @25857 has 123 MA's), (23, 25932),

Gene: Karhdo_28 Start: 26020, Stop: 26160, Start Num: 10

Candidate Starts for Karhdo_28:

(Start: 10 @26020 has 123 MA's), (23, 26095),

Gene: Kenuha5_25 Start: 25038, Stop: 25178, Start Num: 10

Candidate Starts for Kenuha5_25:

(Start: 10 @25038 has 123 MA's), (23, 25113),

Gene: Kimberlium_30 Start: 27010, Stop: 27150, Start Num: 10

Candidate Starts for Kimberlium_30:

(Start: 10 @27010 has 123 MA's), (23, 27085),

Gene: KingJulian_28 Start: 26064, Stop: 26216, Start Num: 7

Candidate Starts for KingJulian_28:

(Start: 7 @26064 has 89 MA's), (Start: 11 @26079 has 17 MA's), (23, 26151),

Gene: KingMidas_29 Start: 27185, Stop: 27325, Start Num: 10

Candidate Starts for KingMidas_29:

(Start: 10 @27185 has 123 MA's), (23, 27260),

Gene: Kingsley_26 Start: 24838, Stop: 25005, Start Num: 7

Candidate Starts for Kingsley_26:

(Start: 7 @24838 has 89 MA's), (Start: 11 @24868 has 17 MA's), (23, 24940),

Gene: Krakatau_29 Start: 26546, Stop: 26698, Start Num: 7

Candidate Starts for Krakatau_29:

(Start: 7 @26546 has 89 MA's), (Start: 11 @26561 has 17 MA's), (23, 26633),

Gene: KristaRAM_29 Start: 26704, Stop: 26871, Start Num: 7

Candidate Starts for KristaRAM_29:

(Start: 7 @26704 has 89 MA's), (Start: 11 @26734 has 17 MA's), (23, 26806),

Gene: Latretium_29 Start: 26693, Stop: 26830, Start Num: 12
Candidate Starts for Latretium_29:
(5, 26597), (Start: 12 @26693 has 2 MA's), (23, 26762), (26, 26795),

Gene: Leozinho_29 Start: 25731, Stop: 25883, Start Num: 7
Candidate Starts for Leozinho_29:
(Start: 7 @25731 has 89 MA's), (Start: 11 @25746 has 17 MA's), (23, 25818),

Gene: Leperchaun_28 Start: 25946, Stop: 26086, Start Num: 10
Candidate Starts for Leperchaun_28:
(Start: 10 @25946 has 123 MA's), (23, 26021),

Gene: LilMoolah_28 Start: 26164, Stop: 26304, Start Num: 10
Candidate Starts for LilMoolah_28:
(Start: 10 @26164 has 123 MA's), (23, 26239),

Gene: LittleShirley_29 Start: 25827, Stop: 25964, Start Num: 10
Candidate Starts for LittleShirley_29:
(Start: 10 @25827 has 123 MA's), (24, 25908),

Gene: Lizziana_28 Start: 26039, Stop: 26179, Start Num: 10
Candidate Starts for Lizziana_28:
(Start: 10 @26039 has 123 MA's), (23, 26114),

Gene: Llama_28 Start: 26097, Stop: 26237, Start Num: 10
Candidate Starts for Llama_28:
(Start: 10 @26097 has 123 MA's), (23, 26172),

Gene: Llij_28 Start: 25862, Stop: 26002, Start Num: 10
Candidate Starts for Llij_28:
(Start: 10 @25862 has 123 MA's), (23, 25937),

Gene: Lorde_29 Start: 25698, Stop: 25838, Start Num: 10
Candidate Starts for Lorde_29:
(Start: 10 @25698 has 123 MA's), (23, 25773),

Gene: Lucia_29 Start: 25982, Stop: 26134, Start Num: 7
Candidate Starts for Lucia_29:
(Start: 7 @25982 has 89 MA's), (Start: 11 @25997 has 17 MA's), (23, 26069),

Gene: LunaBlu_29 Start: 26100, Stop: 26240, Start Num: 10
Candidate Starts for LunaBlu_29:
(Start: 10 @26100 has 123 MA's), (23, 26175),

Gene: LunaStella_29 Start: 26164, Stop: 26301, Start Num: 11
Candidate Starts for LunaStella_29:
(Start: 11 @26164 has 17 MA's), (23, 26236),

Gene: MadMen_25 Start: 25147, Stop: 25287, Start Num: 10
Candidate Starts for MadMen_25:
(Start: 10 @25147 has 123 MA's), (23, 25222),

Gene: Madiba_26 Start: 24800, Stop: 24940, Start Num: 10

Candidate Starts for Madiba_26:
(Start: 10 @24800 has 123 MA's), (23, 24875),

Gene: Mahavrat_28 Start: 25850, Stop: 25990, Start Num: 10
Candidate Starts for Mahavrat_28:
(Start: 10 @25850 has 123 MA's), (23, 25925),

Gene: Mandlovu_28 Start: 26073, Stop: 26225, Start Num: 7
Candidate Starts for Mandlovu_28:
(Start: 7 @26073 has 89 MA's), (Start: 11 @26088 has 17 MA's), (23, 26160),

Gene: Mantra_28 Start: 25987, Stop: 26127, Start Num: 10
Candidate Starts for Mantra_28:
(Start: 10 @25987 has 123 MA's), (23, 26062),

Gene: Maravista_28 Start: 25821, Stop: 25961, Start Num: 10
Candidate Starts for Maravista_28:
(Start: 10 @25821 has 123 MA's), (23, 25896),

Gene: Marker_29 Start: 25737, Stop: 25889, Start Num: 7
Candidate Starts for Marker_29:
(Start: 7 @25737 has 89 MA's), (Start: 11 @25752 has 17 MA's), (23, 25824),

Gene: Martik_28 Start: 26066, Stop: 26206, Start Num: 10
Candidate Starts for Martik_28:
(Start: 10 @26066 has 123 MA's), (23, 26141),

Gene: Mattes_28 Start: 26045, Stop: 26179, Start Num: 10
Candidate Starts for Mattes_28:
(Start: 10 @26045 has 123 MA's), (23, 26114),

Gene: Medindi_29 Start: 25884, Stop: 26036, Start Num: 7
Candidate Starts for Medindi_29:
(Start: 7 @25884 has 89 MA's), (Start: 11 @25899 has 17 MA's), (23, 25971),

Gene: Melissauren88_28 Start: 26058, Stop: 26210, Start Num: 7
Candidate Starts for Melissauren88_28:
(Start: 7 @26058 has 89 MA's), (Start: 11 @26073 has 17 MA's), (23, 26145),

Gene: MilleniumForce_29 Start: 26835, Stop: 27002, Start Num: 7
Candidate Starts for MilleniumForce_29:
(Start: 7 @26835 has 89 MA's), (Start: 11 @26865 has 17 MA's), (23, 26937),

Gene: MinionDave_29 Start: 26258, Stop: 26398, Start Num: 10
Candidate Starts for MinionDave_29:
(Start: 10 @26258 has 123 MA's), (23, 26333),

Gene: Minnie_29 Start: 26603, Stop: 26740, Start Num: 11
Candidate Starts for Minnie_29:
(Start: 7 @26573 has 89 MA's), (Start: 11 @26603 has 17 MA's), (23, 26675),

Gene: Misha28_29 Start: 25746, Stop: 25898, Start Num: 7
Candidate Starts for Misha28_29:

(Start: 7 @25746 has 89 MA's), (Start: 11 @25761 has 17 MA's), (23, 25833),

Gene: MisterCuddles_28 Start: 25857, Stop: 25991, Start Num: 10

Candidate Starts for MisterCuddles_28:

(Start: 10 @25857 has 123 MA's), (23, 25926),

Gene: Modragons_28 Start: 25942, Stop: 26082, Start Num: 10

Candidate Starts for Modragons_28:

(Start: 10 @25942 has 123 MA's), (23, 26017),

Gene: MooMoo_26 Start: 24806, Stop: 24943, Start Num: 12

Candidate Starts for MooMoo_26:

(Start: 12 @24806 has 2 MA's), (15, 24830), (23, 24875), (26, 24908),

Gene: Moonbeam_29 Start: 26528, Stop: 26695, Start Num: 7

Candidate Starts for Moonbeam_29:

(Start: 7 @26528 has 89 MA's), (Start: 11 @26558 has 17 MA's), (23, 26630),

Gene: Mova_29 Start: 25725, Stop: 25892, Start Num: 7

Candidate Starts for Mova_29:

(Start: 7 @25725 has 89 MA's), (Start: 11 @25755 has 17 MA's), (23, 25827),

Gene: Mozy_29 Start: 25935, Stop: 26087, Start Num: 7

Candidate Starts for Mozy_29:

(Start: 7 @25935 has 89 MA's), (Start: 11 @25950 has 17 MA's), (23, 26022),

Gene: MulchExplorer_30 Start: 27010, Stop: 27150, Start Num: 10

Candidate Starts for MulchExplorer_30:

(Start: 10 @27010 has 123 MA's), (23, 27085),

Gene: Mutaforma13_28 Start: 26073, Stop: 26213, Start Num: 10

Candidate Starts for Mutaforma13_28:

(Start: 10 @26073 has 123 MA's), (23, 26148),

Gene: Mwanjiwa_28 Start: 25986, Stop: 26153, Start Num: 7

Candidate Starts for Mwanjiwa_28:

(Start: 7 @25986 has 89 MA's), (Start: 11 @26016 has 17 MA's), (23, 26088),

Gene: NewHope4_30 Start: 26075, Stop: 26242, Start Num: 7

Candidate Starts for NewHope4_30:

(Start: 7 @26075 has 89 MA's), (Start: 11 @26105 has 17 MA's), (23, 26177),

Gene: Nichirin_29 Start: 26045, Stop: 26185, Start Num: 10

Candidate Starts for Nichirin_29:

(Start: 10 @26045 has 123 MA's), (23, 26120),

Gene: Nimbo_28 Start: 25893, Stop: 26033, Start Num: 10

Candidate Starts for Nimbo_28:

(Start: 10 @25893 has 123 MA's), (23, 25968),

Gene: Nitzel_29 Start: 26607, Stop: 26747, Start Num: 10

Candidate Starts for Nitzel_29:

(Start: 10 @26607 has 123 MA's), (23, 26682),

Gene: Nivrat_28 Start: 26038, Stop: 26178, Start Num: 10
Candidate Starts for Nivrat_28:
(Start: 10 @26038 has 123 MA's), (23, 26113),

Gene: NormanBulbieJr_28 Start: 26053, Stop: 26193, Start Num: 10
Candidate Starts for NormanBulbieJr_28:
(Start: 10 @26053 has 123 MA's), (23, 26128),

Gene: OfUltron_28 Start: 26098, Stop: 26238, Start Num: 10
Candidate Starts for OfUltron_28:
(Start: 10 @26098 has 123 MA's), (23, 26173),

Gene: Ogopogo_28 Start: 25248, Stop: 25388, Start Num: 10
Candidate Starts for Ogopogo_28:
(Start: 10 @25248 has 123 MA's), (23, 25323),

Gene: Okabe_28 Start: 22936, Stop: 23076, Start Num: 10
Candidate Starts for Okabe_28:
(Start: 10 @22936 has 123 MA's), (23, 23011),

Gene: Oksu_29 Start: 25942, Stop: 26082, Start Num: 10
Candidate Starts for Oksu_29:
(Start: 10 @25942 has 123 MA's), (23, 26017),

Gene: OldBen_28 Start: 25852, Stop: 25986, Start Num: 10
Candidate Starts for OldBen_28:
(Start: 10 @25852 has 123 MA's), (23, 25921),

Gene: OlympiaSaint_28 Start: 26268, Stop: 26402, Start Num: 10
Candidate Starts for OlympiaSaint_28:
(Start: 10 @26268 has 123 MA's), (23, 26337),

Gene: Ovechkin_28 Start: 26030, Stop: 26197, Start Num: 7
Candidate Starts for Ovechkin_28:
(Start: 7 @26030 has 89 MA's), (Start: 11 @26060 has 17 MA's), (23, 26132),

Gene: OwlsT2W_29 Start: 26324, Stop: 26476, Start Num: 7
Candidate Starts for OwlsT2W_29:
(Start: 7 @26324 has 89 MA's), (Start: 11 @26339 has 17 MA's), (23, 26411),

Gene: PHappiness_28 Start: 25867, Stop: 26007, Start Num: 10
Candidate Starts for PHappiness_28:
(Start: 10 @25867 has 123 MA's), (23, 25942),

Gene: PMC_28 Start: 25862, Stop: 26002, Start Num: 10
Candidate Starts for PMC_28:
(Start: 10 @25862 has 123 MA's), (23, 25937),

Gene: Pacc40_28 Start: 26042, Stop: 26182, Start Num: 10
Candidate Starts for Pacc40_28:
(Start: 10 @26042 has 123 MA's), (23, 26117),

Gene: PaintedDog_27 Start: 24516, Stop: 24650, Start Num: 11
Candidate Starts for PaintedDog_27:
(8, 24498), (Start: 11 @24516 has 17 MA's), (16, 24549), (18, 24564),

Gene: PatoPoderoso_28 Start: 26064, Stop: 26216, Start Num: 7
Candidate Starts for PatoPoderoso_28:
(Start: 7 @26064 has 89 MA's), (Start: 11 @26079 has 17 MA's), (23, 26151),

Gene: Peridot_31 Start: 25686, Stop: 25823, Start Num: 10
Candidate Starts for Peridot_31:
(Start: 10 @25686 has 123 MA's), (24, 25767),

Gene: Phalconet_28 Start: 25961, Stop: 26113, Start Num: 7
Candidate Starts for Phalconet_28:
(Start: 7 @25961 has 89 MA's), (Start: 11 @25976 has 17 MA's), (23, 26048),

Gene: Phanphagia_25 Start: 25032, Stop: 25199, Start Num: 7
Candidate Starts for Phanphagia_25:
(Start: 7 @25032 has 89 MA's), (Start: 11 @25062 has 17 MA's), (23, 25134),

Gene: Phasih_29 Start: 26431, Stop: 26571, Start Num: 10
Candidate Starts for Phasih_29:
(Start: 10 @26431 has 123 MA's), (23, 26506),

Gene: Phatniss_29 Start: 26379, Stop: 26519, Start Num: 10
Candidate Starts for Phatniss_29:
(Start: 10 @26379 has 123 MA's), (23, 26454),

Gene: PhesterPhotato_28 Start: 25881, Stop: 26033, Start Num: 7
Candidate Starts for PhesterPhotato_28:
(Start: 7 @25881 has 89 MA's), (Start: 11 @25896 has 17 MA's), (23, 25968),

Gene: Philus_28 Start: 25891, Stop: 26025, Start Num: 10
Candidate Starts for Philus_28:
(Start: 10 @25891 has 123 MA's), (23, 25960),

Gene: PhlipPhlop_28 Start: 25960, Stop: 26097, Start Num: 10
Candidate Starts for PhlipPhlop_28:
(Start: 10 @25960 has 123 MA's), (24, 26041),

Gene: Piper2020_30 Start: 26484, Stop: 26618, Start Num: 10
Candidate Starts for Piper2020_30:
(Start: 10 @26484 has 123 MA's), (23, 26553),

Gene: Plumbus_29 Start: 25705, Stop: 25857, Start Num: 7
Candidate Starts for Plumbus_29:
(Start: 7 @25705 has 89 MA's), (Start: 11 @25720 has 17 MA's), (23, 25792),

Gene: Poenanya_28 Start: 25998, Stop: 26138, Start Num: 10
Candidate Starts for Poenanya_28:
(Start: 10 @25998 has 123 MA's), (23, 26073),

Gene: Polka14_29 Start: 26413, Stop: 26565, Start Num: 7

Candidate Starts for Polka14_29:
(Start: 7 @26413 has 89 MA's), (Start: 11 @26428 has 17 MA's), (23, 26500),

Gene: Pollywog_28 Start: 26127, Stop: 26267, Start Num: 10
Candidate Starts for Pollywog_28:
(Start: 10 @26127 has 123 MA's), (23, 26202),

Gene: Polo2Bam_32 Start: 26049, Stop: 26201, Start Num: 7
Candidate Starts for Polo2Bam_32:
(Start: 7 @26049 has 89 MA's), (Start: 11 @26064 has 17 MA's), (23, 26136),

Gene: PopTart_28 Start: 26073, Stop: 26240, Start Num: 7
Candidate Starts for PopTart_28:
(Start: 7 @26073 has 89 MA's), (Start: 11 @26103 has 17 MA's), (23, 26175),

Gene: Priscilla_28 Start: 26082, Stop: 26216, Start Num: 10
Candidate Starts for Priscilla_28:
(Start: 10 @26082 has 123 MA's), (23, 26151),

Gene: Pygmy_27 Start: 24738, Stop: 24872, Start Num: 11
Candidate Starts for Pygmy_27:
(Start: 11 @24738 has 17 MA's), (16, 24771), (18, 24786), (19, 24789),

Gene: QuickMath_29 Start: 27234, Stop: 27374, Start Num: 10
Candidate Starts for QuickMath_29:
(Start: 10 @27234 has 123 MA's), (23, 27309),

Gene: Quico_29 Start: 25697, Stop: 25840, Start Num: 7
Candidate Starts for Quico_29:
(Start: 7 @25697 has 89 MA's), (Start: 11 @25703 has 17 MA's), (23, 25775),

Gene: Radiance_28 Start: 25990, Stop: 26124, Start Num: 10
Candidate Starts for Radiance_28:
(Start: 10 @25990 has 123 MA's), (23, 26059),

Gene: Ramsey_29 Start: 25906, Stop: 26058, Start Num: 7
Candidate Starts for Ramsey_29:
(Start: 7 @25906 has 89 MA's), (Start: 11 @25921 has 17 MA's), (23, 25993),

Gene: RedBird_28 Start: 25808, Stop: 25948, Start Num: 10
Candidate Starts for RedBird_28:
(Start: 10 @25808 has 123 MA's), (23, 25883),

Gene: Renaud18_28 Start: 26074, Stop: 26214, Start Num: 10
Candidate Starts for Renaud18_28:
(Start: 10 @26074 has 123 MA's), (23, 26149),

Gene: Rialto_30 Start: 26518, Stop: 26655, Start Num: 10
Candidate Starts for Rialto_30:
(Start: 10 @26518 has 123 MA's), (24, 26599),

Gene: Rita_28 Start: 25888, Stop: 26028, Start Num: 10
Candidate Starts for Rita_28:

(Start: 10 @25888 has 123 MA's), (23, 25963),

Gene: RitaG_28 Start: 26097, Stop: 26231, Start Num: 10

Candidate Starts for RitaG_28:

(Start: 10 @26097 has 123 MA's), (23, 26166),

Gene: Rockne_28 Start: 25862, Stop: 26002, Start Num: 10

Candidate Starts for Rockne_28:

(Start: 10 @25862 has 123 MA's), (23, 25937),

Gene: RockyHorror_29 Start: 25730, Stop: 25897, Start Num: 7

Candidate Starts for RockyHorror_29:

(Start: 7 @25730 has 89 MA's), (Start: 11 @25760 has 17 MA's), (23, 25832),

Gene: Royals2015_28 Start: 25953, Stop: 26120, Start Num: 7

Candidate Starts for Royals2015_28:

(Start: 7 @25953 has 89 MA's), (Start: 11 @25983 has 17 MA's), (23, 26055),

Gene: Ruby_28 Start: 25857, Stop: 25991, Start Num: 10

Candidate Starts for Ruby_28:

(Start: 10 @25857 has 123 MA's), (23, 25926),

Gene: SG4_28 Start: 26181, Stop: 26348, Start Num: 7

Candidate Starts for SG4_28:

(Start: 7 @26181 has 89 MA's), (Start: 11 @26211 has 17 MA's), (23, 26283),

Gene: Saal_28 Start: 25869, Stop: 26003, Start Num: 10

Candidate Starts for Saal_28:

(Start: 10 @25869 has 123 MA's), (23, 25938),

Gene: Sabbb_29 Start: 26215, Stop: 26349, Start Num: 10

Candidate Starts for Sabbb_29:

(Start: 10 @26215 has 123 MA's), (23, 26284),

Gene: Sandalphon_29 Start: 26600, Stop: 26734, Start Num: 10

Candidate Starts for Sandalphon_29:

(Start: 10 @26600 has 123 MA's), (23, 26669),

Gene: Sassafras_28 Start: 26013, Stop: 26147, Start Num: 10

Candidate Starts for Sassafras_28:

(Start: 10 @26013 has 123 MA's), (23, 26082),

Gene: SassyB_28 Start: 26073, Stop: 26240, Start Num: 7

Candidate Starts for SassyB_28:

(Start: 7 @26073 has 89 MA's), (Start: 11 @26103 has 17 MA's), (23, 26175),

Gene: Scottish_29 Start: 27190, Stop: 27330, Start Num: 10

Candidate Starts for Scottish_29:

(Start: 10 @27190 has 123 MA's), (23, 27265),

Gene: SeaLumen_31 Start: 26049, Stop: 26201, Start Num: 7

Candidate Starts for SeaLumen_31:

(Start: 7 @26049 has 89 MA's), (Start: 11 @26064 has 17 MA's), (23, 26136),

Gene: Seabastian_28 Start: 26098, Stop: 26238, Start Num: 10
Candidate Starts for Seabastian_28:
(Start: 10 @26098 has 123 MA's), (23, 26173),

Gene: Seagreen_29 Start: 25880, Stop: 26047, Start Num: 7
Candidate Starts for Seagreen_29:
(Start: 7 @25880 has 89 MA's), (Start: 11 @25910 has 17 MA's), (23, 25982),

Gene: Shauna1_25 Start: 25035, Stop: 25202, Start Num: 7
Candidate Starts for Shauna1_25:
(Start: 7 @25035 has 89 MA's), (Start: 11 @25065 has 17 MA's), (23, 25137),

Gene: ShiLan_28 Start: 26065, Stop: 26205, Start Num: 10
Candidate Starts for ShiLan_28:
(Start: 10 @26065 has 123 MA's), (23, 26140),

Gene: Shipwreck_27 Start: 24716, Stop: 24850, Start Num: 11
Candidate Starts for Shipwreck_27:
(Start: 11 @24716 has 17 MA's), (16, 24749), (18, 24764), (19, 24767),

Gene: ShowerHandel_28 Start: 26066, Stop: 26206, Start Num: 10
Candidate Starts for ShowerHandel_28:
(Start: 10 @26066 has 123 MA's), (23, 26141),

Gene: ShroomBoi_25 Start: 24925, Stop: 25092, Start Num: 7
Candidate Starts for ShroomBoi_25:
(Start: 7 @24925 has 89 MA's), (Start: 11 @24955 has 17 MA's), (23, 25027),

Gene: SiSi_28 Start: 25864, Stop: 26004, Start Num: 10
Candidate Starts for SiSi_28:
(Start: 10 @25864 has 123 MA's), (23, 25939),

Gene: SilverChicken_35 Start: 25765, Stop: 25902, Start Num: 11
Candidate Starts for SilverChicken_35:
(Start: 7 @25735 has 89 MA's), (Start: 11 @25765 has 17 MA's), (23, 25837),

Gene: SimranZ1_29 Start: 25717, Stop: 25854, Start Num: 10
Candidate Starts for SimranZ1_29:
(Start: 10 @25717 has 123 MA's), (23, 25792), (25, 25810),

Gene: Slim_29 Start: 25798, Stop: 25935, Start Num: 10
Candidate Starts for Slim_29:
(Start: 10 @25798 has 123 MA's), (24, 25879),

Gene: Soul22_32 Start: 25415, Stop: 25555, Start Num: 10
Candidate Starts for Soul22_32:
(Start: 10 @25415 has 123 MA's), (23, 25490),

Gene: Sparkdehlily_28 Start: 25915, Stop: 26049, Start Num: 10
Candidate Starts for Sparkdehlily_28:
(Start: 10 @25915 has 123 MA's), (23, 25984),

Gene: Spartacus_29 Start: 26108, Stop: 26275, Start Num: 7
Candidate Starts for Spartacus_29:
(Start: 7 @26108 has 89 MA's), (Start: 11 @26138 has 17 MA's), (23, 26210),

Gene: Spikelee_29 Start: 25856, Stop: 26023, Start Num: 7
Candidate Starts for Spikelee_29:
(Start: 7 @25856 has 89 MA's), (Start: 11 @25886 has 17 MA's), (23, 25958),

Gene: Spoonbill_28 Start: 26079, Stop: 26213, Start Num: 10
Candidate Starts for Spoonbill_28:
(Start: 10 @26079 has 123 MA's), (23, 26148),

Gene: Stap_29 Start: 26038, Stop: 26178, Start Num: 10
Candidate Starts for Stap_29:
(Start: 10 @26038 has 123 MA's), (23, 26113),

Gene: Starcevich_31 Start: 26193, Stop: 26324, Start Num: 11
Candidate Starts for Starcevich_31:
(1, 25968), (2, 26025), (4, 26043), (Start: 11 @26193 has 17 MA's), (17, 26226), (20, 26247), (21, 26250), (22, 26253), (25, 26280),

Gene: Strokeseat_28 Start: 26130, Stop: 26282, Start Num: 7
Candidate Starts for Strokeseat_28:
(Start: 7 @26130 has 89 MA's), (Start: 11 @26145 has 17 MA's), (23, 26217),

Gene: SuperGrey_28 Start: 26610, Stop: 26750, Start Num: 10
Candidate Starts for SuperGrey_28:
(Start: 10 @26610 has 123 MA's), (23, 26685),

Gene: SwagPiggett_28 Start: 25877, Stop: 26017, Start Num: 10
Candidate Starts for SwagPiggett_28:
(Start: 10 @25877 has 123 MA's), (23, 25952),

Gene: TChen_27 Start: 26165, Stop: 26302, Start Num: 11
Candidate Starts for TChen_27:
(Start: 11 @26165 has 17 MA's), (23, 26237),

Gene: TDanisky_28 Start: 25915, Stop: 26049, Start Num: 10
Candidate Starts for TDanisky_28:
(Start: 10 @25915 has 123 MA's), (23, 25984),

Gene: Taj_28 Start: 26060, Stop: 26227, Start Num: 7
Candidate Starts for Taj_28:
(Start: 7 @26060 has 89 MA's), (Start: 11 @26090 has 17 MA's), (23, 26162),

Gene: ThetaBob_27 Start: 25254, Stop: 25394, Start Num: 10
Candidate Starts for ThetaBob_27:
(Start: 10 @25254 has 123 MA's), (23, 25329),

Gene: TootsiePop_29 Start: 25746, Stop: 25898, Start Num: 7
Candidate Starts for TootsiePop_29:
(Start: 7 @25746 has 89 MA's), (Start: 11 @25761 has 17 MA's), (23, 25833),

Gene: Tootsieroll_29 Start: 25869, Stop: 26021, Start Num: 7
Candidate Starts for Tootsieroll_29:
(Start: 7 @25869 has 89 MA's), (Start: 11 @25884 has 17 MA's), (23, 25956),

Gene: Topiatin_31 Start: 26560, Stop: 26700, Start Num: 10
Candidate Starts for Topiatin_31:
(Start: 10 @26560 has 123 MA's), (23, 26635),

Gene: Totinger_29 Start: 25797, Stop: 25931, Start Num: 10
Candidate Starts for Totinger_29:
(Start: 10 @25797 has 123 MA's), (23, 25866),

Gene: Tweety_28 Start: 26076, Stop: 26228, Start Num: 7
Candidate Starts for Tweety_28:
(Start: 7 @26076 has 89 MA's), (Start: 11 @26091 has 17 MA's), (23, 26163),

Gene: UncleRicky_31 Start: 27195, Stop: 27335, Start Num: 10
Candidate Starts for UncleRicky_31:
(Start: 10 @27195 has 123 MA's), (23, 27270),

Gene: VRedHorse_28 Start: 26083, Stop: 26235, Start Num: 7
Candidate Starts for VRedHorse_28:
(Start: 7 @26083 has 89 MA's), (Start: 11 @26098 has 17 MA's), (23, 26170),

Gene: Veteran_28 Start: 25894, Stop: 26034, Start Num: 10
Candidate Starts for Veteran_28:
(Start: 10 @25894 has 123 MA's), (23, 25969),

Gene: Violac_29 Start: 26576, Stop: 26728, Start Num: 7
Candidate Starts for Violac_29:
(Start: 7 @26576 has 89 MA's), (Start: 11 @26591 has 17 MA's), (23, 26663),

Gene: Vivum_28 Start: 25795, Stop: 25962, Start Num: 7
Candidate Starts for Vivum_28:
(Start: 7 @25795 has 89 MA's), (Start: 11 @25825 has 17 MA's), (23, 25897),

Gene: Wachhund_28 Start: 26049, Stop: 26189, Start Num: 10
Candidate Starts for Wachhund_28:
(Start: 10 @26049 has 123 MA's), (23, 26124),

Gene: Wee_29 Start: 26598, Stop: 26765, Start Num: 7
Candidate Starts for Wee_29:
(Start: 7 @26598 has 89 MA's), (Start: 11 @26628 has 17 MA's), (23, 26700),

Gene: Whatsapiecost_28 Start: 26075, Stop: 26215, Start Num: 10
Candidate Starts for Whatsapiecost_28:
(Start: 10 @26075 has 123 MA's), (23, 26150),

Gene: Whouxphf_28 Start: 26134, Stop: 26274, Start Num: 10
Candidate Starts for Whouxphf_28:
(Start: 10 @26134 has 123 MA's), (23, 26209),

Gene: WillSterrel_29 Start: 27241, Stop: 27408, Start Num: 7

Candidate Starts for WillSterrel_29:

(Start: 7 @27241 has 89 MA's), (Start: 11 @27271 has 17 MA's), (23, 27343),

Gene: XFactor_28 Start: 26030, Stop: 26182, Start Num: 7

Candidate Starts for XFactor_28:

(Start: 7 @26030 has 89 MA's), (Start: 11 @26045 has 17 MA's), (23, 26117),

Gene: Yorick_28 Start: 26064, Stop: 26204, Start Num: 10

Candidate Starts for Yorick_28:

(Start: 10 @26064 has 123 MA's), (23, 26139),

Gene: Zapner_34 Start: 26243, Stop: 26380, Start Num: 11

Candidate Starts for Zapner_34:

(3, 26087), (Start: 11 @26243 has 17 MA's), (23, 26315),

Gene: Zerg_28 Start: 25839, Stop: 26006, Start Num: 7

Candidate Starts for Zerg_28:

(Start: 7 @25839 has 89 MA's), (Start: 11 @25869 has 17 MA's), (23, 25941),

Gene: Zizzle_28 Start: 26008, Stop: 26148, Start Num: 10

Candidate Starts for Zizzle_28:

(Start: 10 @26008 has 123 MA's), (23, 26083),