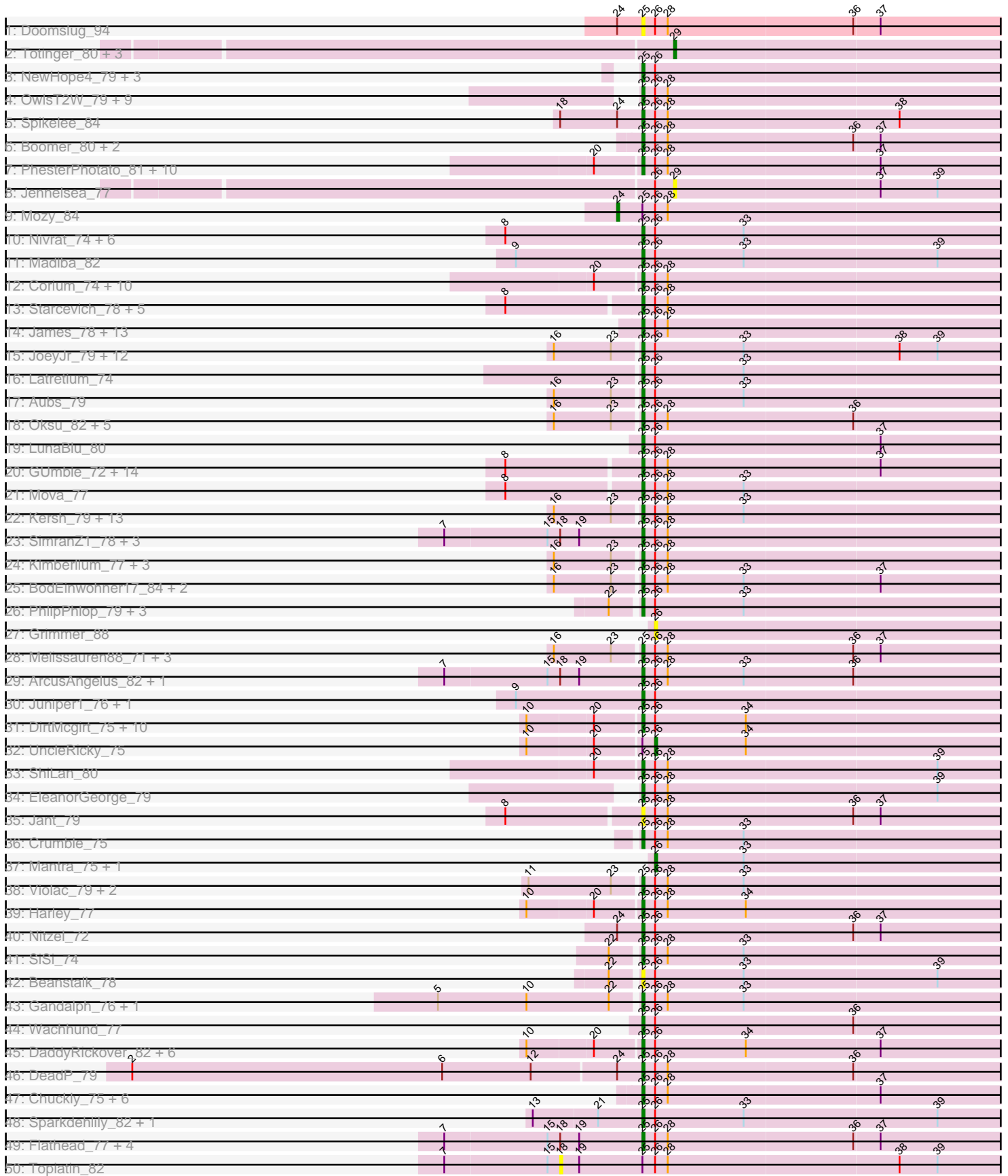
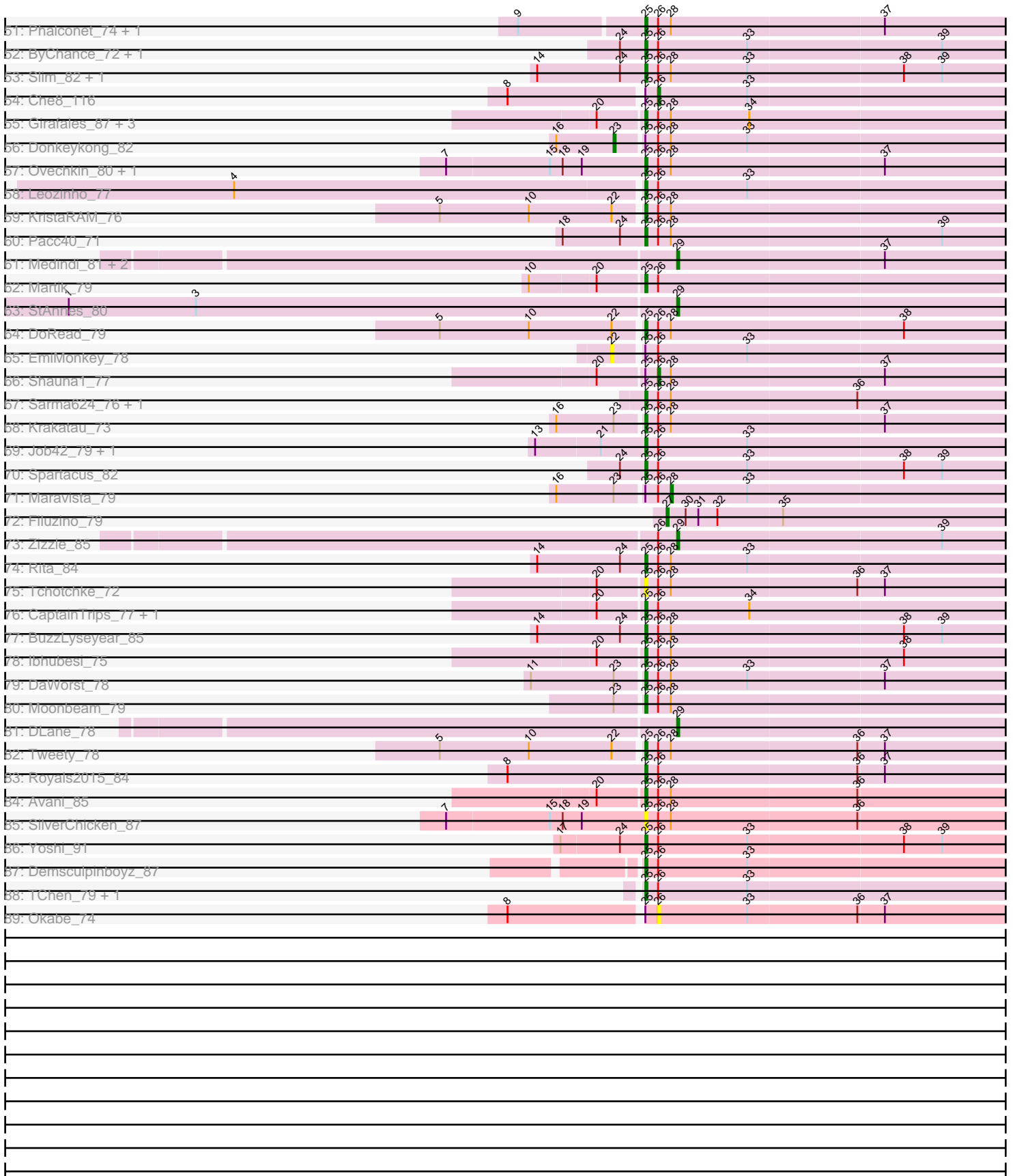


Pham 294400



Pham 294400



Note: Tracks are now grouped by subcluster and scaled. Switching in subcluster is indicated by changes in track color. Track scale is now set by default to display the region 30 bp upstream of start 1 to 30 bp downstream of the last possible start. If this default region is judged to be packed too tightly with annotated starts, the track will be further scaled to only show that region of the ORF with annotated starts. This action will be indicated by adding "Zoomed" to the title. For starts, yellow indicates the location of called starts comprised solely of Glimmer/GeneMark auto-annotations, green indicates the location of called starts with at least 1 manual gene annotation.

Pham 294400 Report

This analysis was run 04/18/26 on database version 643.

Pham number 294400 has 254 members, 26 are drafts.

Phages represented in each track:

- Track 1 : Doomslug_94
- Track 2 : Totinger_80, Fastidio_78, DillTech15_85, LittleShirley_84
- Track 3 : NewHope4_79, SeaLumen_82, Enzomatic_85, Polo2Bam_84
- Track 4 : OwlsT2W_79, Llama_82, Ochi17_81, Seabastian_83, AlpineSix_82, ThetaBob_80, OfUltron_83, Jinglebell_82, Soul22_80, Modragons_80
- Track 5 : Spikelee_84
- Track 6 : Boomer_80, PMC_73, Rockne_77
- Track 7 : PhesterPhotato_81, Kingsley_81, SG4_75, Cornie_73, Batiatus_77, Mandlovu_73, Ogopogo_83, Hlubikazi_73, Strokeseat_73, Whatsapiecost_72, Phanphagia_76
- Track 8 : Jennelsea_77
- Track 9 : Mozy_84
- Track 10 : Nivrat_74, Pollywog_78, LilMoolah_76, Zerg_76, Che9d_89, SuperGrey_78, Renaud18_87
- Track 11 : Madiba_82
- Track 12 : Corium_74, PatoPoderoso_74, Bubbles123_73, IrishSherpFalk_78, Radiance_77, VRedHorse_78, Cornucopia_79, Ramsey_82, Byougenkin_76, Phasih_74, KingJulian_80
- Track 13 : Starcevich_78, Peridot_82, Dante_77, Zapner_86, Blarby_86, Jabbawokkie_87
- Track 14 : James_78, Plumbus_79, Hamulus_78, PopTart_68, Jarcob_77, Clifton_70, Saal_77, Lizziana_82, Philus_80, DRBy19_81, Gorge_79, OlympiaSaint_77, Mattes_79, SassyB_68
- Track 15 : JoeyJr_79, Nimbo_71, PHappiness_79, Geralt_72, OldBen_76, Leperchaun_77, RedBird_80, Daenerys_78, Inventum_77, Dorothy_80, Sassafras_80, RitaG_79, Deb65_72
- Track 16 : Latretium_74
- Track 17 : Aubs_79
- Track 18 : Oksu_82, BigPhil_71, Brookers_72, Cheese puff_85, Cerasum_71, Coco12_74
- Track 19 : LunaBlu_80
- Track 20 : GUmbie_72, JalFarm20_86, Bobi_84, DotProduct_74, Ardmore_63, Vivum_78, GigiOuiOui_72, Seagreen_79, Akhila_72, MilanaBonita_71, Bipolar_80, Veteran_70, Firehouse51_74, Wee_83, Taj_84
- Track 21 : Mova_77
- Track 22 : Kersh_79, FreddyB_87, Cabrinians_77, Brocalys_70, Karhdo_76, Sabbb_79, Priscilla_75, MadMen_75, BobaPhett_80, LastJedi_69, Koella_69,

NormanBulbieJr_74, SwagPigglett_81, Frankie_87

- Track 23 : SimranZ1_78, Estave1_84, Fancypants_82, Hades_78
- Track 24 : Kimberlium_77, QuickMath_76, MulchExplorer_76, Juice456_74
- Track 25 : BodEinwohner17_84, Squirty_79, Stap_72
- Track 26 : PhlipPhlop_79, Doug_78, Eradicator_68, Rialto_85
- Track 27 : Grimmer_88
- Track 28 : Melissaueren88_71, Minnie_75, Sandalphon_73, Clank_79
- Track 29 : ArcusAngelus_82, Chevrolet_85
- Track 30 : Juniper1_76, Mahavrat_74
- Track 31 : DirtMcgirt_75, Lij_72, Blexus_74, Pippy_74, Tootsieroll_76, Drago_73, Enby_77, Lorde_76, Lucia_76, Phatniss_73, Mutaforma13_84
- Track 32 : UncleRicky_75
- Track 33 : ShiLan_80
- Track 34 : EleanorGeorge_79
- Track 35 : Jant_79
- Track 36 : Crumble_75
- Track 37 : Mantra_75, Emma_81
- Track 38 : Violac_79, XFactor_73, Whouxphf_74
- Track 39 : Harley_77
- Track 40 : Nitzel_72
- Track 41 : SiSi_74
- Track 42 : Beanstalk_78
- Track 43 : Gandalph_76, Mwanjiwa_81
- Track 44 : Wachhund_77
- Track 45 : DaddyRickover_82, Doomphist_82, KingMidas_78, Poenanya_82, Empress_77, Polka14_83, Scottish_77
- Track 46 : DeadP_79
- Track 47 : Chuckly_75, Hegedechwinu_79, IbOuu_72, Spoonbill_75, Galactic_77, MilleniumForce_78, DosHalletts_81
- Track 48 : Sparkdehlily_82, TDanisky_83
- Track 49 : Flathead_77, MisterCuddles_75, Brushbloom_81, Girr_74, Ruby_72
- Track 50 : Topiatin_82
- Track 51 : Phalconet_74, Ms6_76
- Track 52 : ByChance_72, ShowerHandel_81
- Track 53 : Slim_82, Emmaloid_82
- Track 54 : Che8_116
- Track 55 : Girafales_87, Quico_87, Eish_81, Florinda_90
- Track 56 : Donkeykong_82
- Track 57 : Ovechkin_80, ShroomBoi_78
- Track 58 : Leozinho_77
- Track 59 : KristaRAM_76
- Track 60 : Pacc40_71
- Track 61 : Medindi_81, Fruitloop_73, IMpilo_72
- Track 62 : Martik_79
- Track 63 : StAnnes_80
- Track 64 : DoRead_79
- Track 65 : EmiMonkey_78
- Track 66 : Shauna1_77
- Track 67 : Sarma624_76, Velveteen_72
- Track 68 : Krakatau_73
- Track 69 : Job42_79, Marker_78
- Track 70 : Spartacus_82
- Track 71 : Maravista_79

- Track 72 : Filuzino_79
- Track 73 : Zizzle_85
- Track 74 : Rita_84
- Track 75 : Tchotchke_72
- Track 76 : CaptainTrips_77, MinionDave_73
- Track 77 : BuzzLyseyear_85
- Track 78 : Ibhubesi_75
- Track 79 : DaWorst_78
- Track 80 : Moonbeam_79
- Track 81 : DLane_78
- Track 82 : Tweety_78
- Track 83 : Royals2015_84
- Track 84 : Avani_85
- Track 85 : SilverChicken_87
- Track 86 : Yoshi_91
- Track 87 : Demsculpinboyz_87
- Track 88 : TChen_79, LunaStella_77
- Track 89 : Okabe_74

Summary of Final Annotations (See graph section above for start numbers):

The start number called the most often in the published annotations is 25, it was called in 211 of the 228 non-draft genes in the pham.

Genes that call this "Most Annotated" start:

- Akhila_72, AlpineSix_82, ArcusAngelus_82, Ardmore_63, Aubs_79, Avani_85, Batiatus_77, Beanstalk_78, BigPhil_71, Bipolar_80, Blarby_86, Blexus_74, BobaPhett_80, Bobi_84, BodEinwohner17_84, Boomer_80, Brocalys_70, Brookers_72, Brushbloom_81, Bubbles123_73, BuzzLyseyear_85, ByChance_72, Byougenkin_76, Cabrinians_77, CaptainTrips_77, Cerasum_71, Che9d_89, CheesePuff_85, Chevrolet_85, Chuckly_75, Clank_79, Clifton_70, Coco12_74, Corium_74, Cornie_73, Cornucopia_79, Crumble_75, DRBy19_81, DaWorst_78, DaddyRickover_82, Daenerys_78, Dante_77, DeadP_79, Deb65_72, Demsculpinboyz_87, DirtMcGirt_75, DoRead_79, Doomphist_82, Doomslug_94, Dorothy_80, DosHalletts_81, DotProduct_74, Doug_78, Drago_73, Eish_81, EleanorGeorge_79, Emmaloid_82, Empress_77, Enby_77, Enzomatic_85, Eradicator_68, Estave1_84, Fancypants_82, Firehouse51_74, Flathead_77, Florinda_90, Frankie_87, FreddyB_87, GUmble_72, Galactic_77, Gandolph_76, Geralt_72, GigiOuiOui_72, Girfales_87, Girr_74, Gorge_79, Hades_78, Hamulus_78, Harley_77, Hegedechwinu_79, Hlubikazi_73, IbOuu_72, Ibhubesi_75, Invention_77, IrishSherpFalk_78, Jabbawokkie_87, JalFarm20_86, James_78, Jant_79, Jarcob_77, Jinglebell_82, Job42_79, JoeyJr_79, Juice456_74, Juniper1_76, Karhdo_76, Kersh_79, Kimberlium_77, KingJulian_80, KingMidas_78, Kingsley_81, Koella_69, Krakatau_73, KristaRAM_76, LastJedi_69, Latretium_74, Leozinho_77, Leperchaun_77, LilMoolah_76, Lizziana_82, Llama_82, Lij_72, Lorde_76, Lucia_76, LunaBlu_80, LunaStella_77, MadMen_75, Madiba_82, Mahavrat_74, Mandlovu_73, Marker_78, Martik_79, Mattes_79, Melissauren88_71, MilanaBonita_71, MilleniumForce_78, MinionDave_73, Minnie_75, MisterCuddles_75, Modragons_80, Moonbeam_79, Mova_77, Ms6_76, MulchExplorer_76, Mutaforma13_84, Mwanjiwa_81, NewHope4_79, Nimbo_71, Nitzel_72, Nivrat_74, NormanBulbieJr_74,

Ochi17_81, OfUltron_83, Ogopogo_83, Oksu_82, OldBen_76, OlympiaSaint_77, Ovechkin_80, OwlsT2W_79, PHappiness_79, PMC_73, Pacc40_71, PatoPoderoso_74, Peridot_82, Phalconet_74, Phanphagia_76, Phasih_74, Phatniss_73, PhesterPhotato_81, Philus_80, PhilipPhlop_79, Pippy_74, Plumbus_79, Poenanya_82, Polka14_83, Pollywog_78, Polo2Bam_84, PopTart_68, Priscilla_75, QuickMath_76, Quico_87, Radiance_77, Ramsey_82, RedBird_80, Renaud18_87, Rialto_85, RitaG_79, Rita_84, Rockne_77, Royals2015_84, Ruby_72, SG4_75, Saal_77, Sabbb_79, Sandalphon_73, Sarma624_76, Sassafras_80, SassyB_68, Scottish_77, SeaLumen_82, Seabastian_83, Seagreen_79, ShiLan_80, ShowerHandel_81, ShroomBoi_78, SiSi_74, SilverChicken_87, SimranZ1_78, Slim_82, Soul22_80, Sparkdehlily_82, Spartacus_82, Spikelee_84, Spoonbill_75, Squirry_79, Stap_72, Starcevic_78, Strokeseat_73, SuperGrey_78, SwagPiggett_81, TChen_79, TDanisky_83, Taj_84, Tchotchke_72, ThetaBob_80, Tootsieroll_76, Tweety_78, VRedHorse_78, Velveteen_72, Veteran_70, Violac_79, Vivum_78, Wachhund_77, Wee_83, Whatsapiecost_72, Whouxphf_74, XFactor_73, Yoshi_91, Zapner_86, Zerg_76,

Genes that have the "Most Annotated" start but do not call it:

- Che8_116, Donkeykong_82, EmiMonkey_78, Maravista_79, Mozy_84, Okabe_74, Shauna1_77, Topiatin_82, UncleRicky_75,

Genes that do not have the "Most Annotated" start:

- DLane_78, DillTech15_85, Emma_81, Fastidio_78, Filuzino_79, Fruitloop_73, Grimmer_88, IMpilo_72, Jennelsea_77, LittleShirley_84, Mantra_75, Medindi_81, StAnnes_80, Totinger_80, Zizzle_85,

Summary by start number:

Start 18:

- Found in 17 of 254 (6.7%) of genes in pham
- No Manual Annotations of this start.
- Called 5.9% of time when present
- Phage (with cluster) where this start called: Topiatin_82 (F1),

Start 22:

- Found in 12 of 254 (4.7%) of genes in pham
- No Manual Annotations of this start.
- Called 8.3% of time when present
- Phage (with cluster) where this start called: EmiMonkey_78 (F1),

Start 23:

- Found in 53 of 254 (20.9%) of genes in pham
- Manual Annotations of this start: 1 of 228
- Called 1.9% of time when present
- Phage (with cluster) where this start called: Donkeykong_82 (F1),

Start 24:

- Found in 14 of 254 (5.5%) of genes in pham
- Manual Annotations of this start: 1 of 228
- Called 7.1% of time when present
- Phage (with cluster) where this start called: Mozy_84 (F1),

Start 25:

- Found in 239 of 254 (94.1%) of genes in pham
- Manual Annotations of this start: 211 of 228
- Called 96.2% of time when present
- Phage (with cluster) where this start called: Akhila_72 (F1), AlpineSix_82 (F1), ArcusAngelus_82 (F1), Ardmore_63 (F1), Aubs_79 (F1), Avani_85 (F2), Batiatus_77 (F1), Beanstalk_78 (F1), BigPhil_71 (F1), Bipolar_80 (F1), Blarby_86 (F), Blexus_74 (F1), BobaPhett_80 (F1), Bobi_84 (F1), BodEinwohner17_84 (F1), Boomer_80 (F1), Brocalys_70 (F1), Brookers_72 (F1), Brushbloom_81 (F1), Bubbles123_73 (F1), BuzzLyseyear_85 (F1), ByChance_72 (F1), Byougenkin_76 (F1), Cabrinians_77 (F1), CaptainTrips_77 (F1), Cerasum_71 (F1), Che9d_89 (F2), CheesePuff_85 (F1), Chevrolet_85 (F1), Chuckly_75 (F1), Clank_79 (F), Clifton_70 (F1), Coco12_74 (F1), Corium_74 (F1), Cornie_73 (F5), Cornucopia_79 (F1), Crumble_75 (F1), DRBy19_81 (F1), DaWorst_78 (F1), DaddyRickover_82 (F1), Daenerys_78 (F1), Dante_77 (F1), DeadP_79 (F1), Deb65_72 (F1), Demsculpinboyz_87 (F2), DirtMcGirt_75 (F1), DoRead_79 (F1), Doomphist_82 (F1), Doomslug_94 (F), Dorothy_80 (F1), DosHalletts_81 (F1), DotProduct_74 (F1), Doug_78 (F1), Drago_73 (F1), Eish_81 (F1), EleanorGeorge_79 (F1), Emmaloid_82 (F1), Empress_77 (F1), Enby_77 (F1), Enzomatic_85 (F1), Eradicator_68 (F1), Estave1_84 (F1), Fancypants_82 (F1), Firehouse51_74 (F1), Flathead_77 (F1), Florinda_90 (F1), Frankie_87 (F1), FreddyB_87 (F1), GUmbie_72 (F1), Galactic_77 (F1), Gandolph_76 (F1), Geralt_72 (F1), GigiOuiOui_72 (F1), Girafales_87 (F1), Girr_74 (F1), Gorge_79 (F1), Hades_78 (F1), Hamulus_78 (F1), Harley_77 (F1), Hegedechwinu_79 (F1), Hlubikazi_73 (F1), IbOuu_72 (F1), Ibhubesi_75 (F1), Inventum_77 (F1), IrishSherpFalk_78 (F1), Jabbawokkie_87 (F2), JalFarm20_86 (F1), James_78 (F1), Jant_79 (F1), Jarcob_77 (F1), Jinglebell_82 (F1), Job42_79 (F1), JoeyJr_79 (F1), Juice456_74 (F1), Juniper1_76 (F1), Karhdo_76 (F1), Kersh_79 (F1), Kimberlium_77 (F1), KingJulian_80 (F1), KingMidas_78 (F1), Kingsley_81 (F1), Koella_69 (F1), Krakatau_73 (F1), KristaRAM_76 (F1), LastJedi_69 (F1), Latretium_74 (F1), Leozinho_77 (F1), Leperchaun_77 (F1), LilMoolah_76 (F1), Lizziana_82 (F1), Llama_82 (F1), Llij_72 (F1), Lorde_76 (F1), Lucia_76 (F1), LunaBlu_80 (F1), LunaStella_77 (F4), MadMen_75 (F1), Madiba_82 (F1), Mahavrat_74 (F1), Mandlovu_73 (F1), Marker_78 (F1), Martik_79 (F1), Mattes_79 (F1), Melissauren88_71 (F1), MilanaBonita_71 (F1), MilleniumForce_78 (F1), MinionDave_73 (F1), Minnie_75 (F1), MisterCuddles_75 (F1), Modragons_80 (F1), Moonbeam_79 (F1), Mova_77 (F1), Ms6_76 (F1), MulchExplorer_76 (F1), Mutaforma13_84 (F1), Mwanjiwa_81 (F1), NewHope4_79 (F1), Nimbo_71 (F1), Nitzel_72 (F1), Nivrat_74 (F1), NormanBulbieJr_74 (F1), Ochi17_81 (F1), OfUltron_83 (F1), OgoPogo_83 (F1), Oksu_82 (F1), OldBen_76 (F1), OlympiaSaint_77 (F1), Ovechkin_80 (F1), OwlsT2W_79 (F1), PHappiness_79 (F1), PMC_73 (F1), Pacc40_71 (F1), PatoPoderoso_74 (F1), Peridot_82 (F1), Phalconet_74 (F1), Phanphagia_76 (F1), Phasih_74 (F1), Phatniss_73 (F1), PhesterPhotato_81 (F1), Philus_80 (F1), PhilipPhlop_79 (F1), Pippy_74 (F1), Plumbus_79 (F1), Poenanya_82 (F1), Polka14_83 (F1), Pollywog_78 (F1), Polo2Bam_84 (F1), PopTart_68 (F1), Priscilla_75 (F1), QuickMath_76 (F1), Quico_87 (F1), Radiance_77 (F1), Ramsey_82 (F1), RedBird_80 (F1), Renaud18_87 (F4), Rialto_85 (F1), RitaG_79 (F1), Rita_84 (F1), Rockne_77 (F1), Royals2015_84 (F1), Ruby_72 (F1), SG4_75 (F1), Saal_77 (F1), Sabbb_79 (F1), Sandalphon_73 (F1), Sarma624_76 (F1), Sassafra_80 (F1), SassyB_68 (F1), Scottish_77 (F1), SeaLumen_82 (F1), Seabastian_83 (F1), Seagreen_79 (F1), ShiLan_80 (F1), ShowerHandel_81 (F1), ShroomBoi_78 (F1), SiSi_74 (F1), SilverChicken_87 (F2), SimranZ1_78 (F1), Slim_82 (F1), Soul22_80 (F2), Sparkdehlily_82 (F1), Spartacus_82 (F1), Spikelee_84 (F1), Spoonbill_75 (F1), Squirty_79 (F3), Stap_72 (F1), Starcevich_78 (F1), Strokeseat_73 (F1), SuperGrey_78 (F1), SwagPigglett_81

(F1), TChen_79 (F4), TDanisky_83 (F1), Taj_84 (F1), Tchotchke_72 (F1), ThetaBob_80 (F4), Tootsieroll_76 (F1), Tweety_78 (F1), VRedHorse_78 (F1), Velveteen_72 (F1), Veteran_70 (F1), Violac_79 (F1), Vivum_78 (F1), Wachhund_77 (F1), Wee_83 (F1), Whatsapiecost_72 (F1), Whouxphf_74 (F1), XFactor_73 (F1), Yoshi_91 (F2), Zapner_86 (F2), Zerg_76 (F1),

Start 26:

- Found in 244 of 254 (96.1%) of genes in pham
- Manual Annotations of this start: 5 of 228
- Called 2.9% of time when present
- Phage (with cluster) where this start called: Che8_116 (F1), Emma_81 (F1), Grimmer_88 (F1), Mantra_75 (F1), Okabe_74 (F8), Shauna1_77 (F1), UncleRicky_75 (F1),

Start 27:

- Found in 1 of 254 (0.4%) of genes in pham
- Manual Annotations of this start: 1 of 228
- Called 100.0% of time when present
- Phage (with cluster) where this start called: Filuzino_79 (F1),

Start 28:

- Found in 164 of 254 (64.6%) of genes in pham
- Manual Annotations of this start: 1 of 228
- Called 0.6% of time when present
- Phage (with cluster) where this start called: Maravista_79 (F1),

Start 29:

- Found in 11 of 254 (4.3%) of genes in pham
- Manual Annotations of this start: 8 of 228
- Called 100.0% of time when present
- Phage (with cluster) where this start called: DLane_78 (F1), DillTech15_85 (F1), Fastidio_78 (F1), Fruitloop_73 (F1), IMpilo_72 (F1), Jennelsea_77 (F1), LittleShirley_84 (F1), Medindi_81 (F1), StAnnes_80 (F1), Totinger_80 (F1), Zizzle_85 (F1),

Summary by clusters:

There are 7 clusters represented in this pham: F1, F2, F3, F4, F5, F, F8,

Info for manual annotations of cluster F1:

- Start number 23 was manually annotated 1 time for cluster F1.
- Start number 24 was manually annotated 1 time for cluster F1.
- Start number 25 was manually annotated 198 times for cluster F1.
- Start number 26 was manually annotated 5 times for cluster F1.
- Start number 27 was manually annotated 1 time for cluster F1.
- Start number 28 was manually annotated 1 time for cluster F1.
- Start number 29 was manually annotated 8 times for cluster F1.

Info for manual annotations of cluster F2:

- Start number 25 was manually annotated 7 times for cluster F2.

Info for manual annotations of cluster F3:

- Start number 25 was manually annotated 1 time for cluster F3.

Info for manual annotations of cluster F4:

- Start number 25 was manually annotated 4 times for cluster F4.

Info for manual annotations of cluster F5:

- Start number 25 was manually annotated 1 time for cluster F5.

Gene Information:

Gene: Akhila_72 Start: 46445, Stop: 46639, Start Num: 25

Candidate Starts for Akhila_72:

(8, 46388), (Start: 25 @46445 has 211 MA's), (Start: 26 @46451 has 5 MA's), (Start: 28 @46457 has 1 MA's), (37, 46556),

Gene: AlpineSix_82 Start: 48470, Stop: 48664, Start Num: 25

Candidate Starts for AlpineSix_82:

(Start: 25 @48470 has 211 MA's), (Start: 26 @48476 has 5 MA's), (Start: 28 @48482 has 1 MA's),

Gene: ArcusAngelus_82 Start: 49485, Stop: 49679, Start Num: 25

Candidate Starts for ArcusAngelus_82:

(7, 49392), (15, 49440), (18, 49446), (19, 49455), (Start: 25 @49485 has 211 MA's), (Start: 26 @49491 has 5 MA's), (Start: 28 @49497 has 1 MA's), (33, 49533), (36, 49584),

Gene: Ardmore_63 Start: 42651, Stop: 42845, Start Num: 25

Candidate Starts for Ardmore_63:

(8, 42594), (Start: 25 @42651 has 211 MA's), (Start: 26 @42657 has 5 MA's), (Start: 28 @42663 has 1 MA's), (37, 42762),

Gene: Aubs_79 Start: 48985, Stop: 49179, Start Num: 25

Candidate Starts for Aubs_79:

(16, 48946), (Start: 23 @48973 has 1 MA's), (Start: 25 @48985 has 211 MA's), (Start: 26 @48991 has 5 MA's), (33, 49033),

Gene: Avani_85 Start: 45896, Stop: 46090, Start Num: 25

Candidate Starts for Avani_85:

(20, 45875), (Start: 25 @45896 has 211 MA's), (Start: 26 @45902 has 5 MA's), (Start: 28 @45908 has 1 MA's), (36, 45995),

Gene: Batiatus_77 Start: 48075, Stop: 48269, Start Num: 25

Candidate Starts for Batiatus_77:

(20, 48054), (Start: 25 @48075 has 211 MA's), (Start: 26 @48081 has 5 MA's), (Start: 28 @48087 has 1 MA's), (37, 48186),

Gene: Beanstalk_78 Start: 47521, Stop: 47715, Start Num: 25

Candidate Starts for Beanstalk_78:

(22, 47509), (Start: 25 @47521 has 211 MA's), (Start: 26 @47527 has 5 MA's), (33, 47569), (39, 47659),

Gene: BigPhil_71 Start: 44058, Stop: 44252, Start Num: 25

Candidate Starts for BigPhil_71:

(16, 44019), (Start: 23 @44046 has 1 MA's), (Start: 25 @44058 has 211 MA's), (Start: 26 @44064 has 5 MA's), (Start: 28 @44070 has 1 MA's), (36, 44157),

Gene: Bipolar_80 Start: 49707, Stop: 49901, Start Num: 25

Candidate Starts for Bipolar_80:

(8, 49650), (Start: 25 @49707 has 211 MA's), (Start: 26 @49713 has 5 MA's), (Start: 28 @49719 has 1 MA's), (37, 49818),

Gene: Blarby_86 Start: 46798, Stop: 46992, Start Num: 25

Candidate Starts for Blarby_86:

(8, 46741), (Start: 25 @46798 has 211 MA's), (Start: 26 @46804 has 5 MA's), (Start: 28 @46810 has 1 MA's),

Gene: Blexus_74 Start: 48240, Stop: 48434, Start Num: 25

Candidate Starts for Blexus_74:

(10, 48189), (20, 48219), (Start: 25 @48240 has 211 MA's), (Start: 26 @48246 has 5 MA's), (34, 48288),

Gene: BobaPhett_80 Start: 50539, Stop: 50733, Start Num: 25

Candidate Starts for BobaPhett_80:

(16, 50500), (Start: 23 @50527 has 1 MA's), (Start: 25 @50539 has 211 MA's), (Start: 26 @50545 has 5 MA's), (Start: 28 @50551 has 1 MA's), (33, 50587),

Gene: Bobi_84 Start: 50362, Stop: 50556, Start Num: 25

Candidate Starts for Bobi_84:

(8, 50305), (Start: 25 @50362 has 211 MA's), (Start: 26 @50368 has 5 MA's), (Start: 28 @50374 has 1 MA's), (37, 50473),

Gene: BodEinwohner17_84 Start: 50516, Stop: 50710, Start Num: 25

Candidate Starts for BodEinwohner17_84:

(16, 50477), (Start: 23 @50504 has 1 MA's), (Start: 25 @50516 has 211 MA's), (Start: 26 @50522 has 5 MA's), (Start: 28 @50528 has 1 MA's), (33, 50564), (37, 50627),

Gene: Boomer_80 Start: 48517, Stop: 48711, Start Num: 25

Candidate Starts for Boomer_80:

(Start: 25 @48517 has 211 MA's), (Start: 26 @48523 has 5 MA's), (Start: 28 @48529 has 1 MA's), (36, 48616), (37, 48628),

Gene: Brocalys_70 Start: 46019, Stop: 46213, Start Num: 25

Candidate Starts for Brocalys_70:

(16, 45980), (Start: 23 @46007 has 1 MA's), (Start: 25 @46019 has 211 MA's), (Start: 26 @46025 has 5 MA's), (Start: 28 @46031 has 1 MA's), (33, 46067),

Gene: Brookers_72 Start: 47009, Stop: 47203, Start Num: 25

Candidate Starts for Brookers_72:

(16, 46970), (Start: 23 @46997 has 1 MA's), (Start: 25 @47009 has 211 MA's), (Start: 26 @47015 has 5 MA's), (Start: 28 @47021 has 1 MA's), (36, 47108),

Gene: Brushbloom_81 Start: 49716, Stop: 49910, Start Num: 25

Candidate Starts for Brushbloom_81:

(7, 49623), (15, 49671), (18, 49677), (19, 49686), (Start: 25 @49716 has 211 MA's), (Start: 26 @49722 has 5 MA's), (Start: 28 @49728 has 1 MA's), (36, 49815), (37, 49827),

Gene: Bubbles123_73 Start: 47867, Stop: 48061, Start Num: 25

Candidate Starts for Bubbles123_73:

(20, 47846), (Start: 25 @47867 has 211 MA's), (Start: 26 @47873 has 5 MA's), (Start: 28 @47879 has 1 MA's),

Gene: BuzzLyseyear_85 Start: 51018, Stop: 51218, Start Num: 25

Candidate Starts for BuzzLyseyear_85:

(14, 50967), (Start: 24 @51006 has 1 MA's), (Start: 25 @51018 has 211 MA's), (Start: 26 @51024 has 5 MA's), (Start: 28 @51030 has 1 MA's), (38, 51138), (39, 51156),

Gene: ByChance_72 Start: 44595, Stop: 44795, Start Num: 25

Candidate Starts for ByChance_72:

(Start: 24 @44583 has 1 MA's), (Start: 25 @44595 has 211 MA's), (Start: 26 @44601 has 5 MA's), (33, 44643), (39, 44733),

Gene: Byougenkin_76 Start: 45736, Stop: 45930, Start Num: 25

Candidate Starts for Byougenkin_76:

(20, 45715), (Start: 25 @45736 has 211 MA's), (Start: 26 @45742 has 5 MA's), (Start: 28 @45748 has 1 MA's),

Gene: Cabrinians_77 Start: 47939, Stop: 48133, Start Num: 25

Candidate Starts for Cabrinians_77:

(16, 47900), (Start: 23 @47927 has 1 MA's), (Start: 25 @47939 has 211 MA's), (Start: 26 @47945 has 5 MA's), (Start: 28 @47951 has 1 MA's), (33, 47987),

Gene: CaptainTrips_77 Start: 47526, Stop: 47720, Start Num: 25

Candidate Starts for CaptainTrips_77:

(20, 47505), (Start: 25 @47526 has 211 MA's), (Start: 26 @47532 has 5 MA's), (34, 47574),

Gene: Cerasum_71 Start: 44076, Stop: 44270, Start Num: 25

Candidate Starts for Cerasum_71:

(16, 44037), (Start: 23 @44064 has 1 MA's), (Start: 25 @44076 has 211 MA's), (Start: 26 @44082 has 5 MA's), (Start: 28 @44088 has 1 MA's), (36, 44175),

Gene: Che8_116 Start: 48446, Stop: 48634, Start Num: 26

Candidate Starts for Che8_116:

(8, 48380), (Start: 25 @48440 has 211 MA's), (Start: 26 @48446 has 5 MA's), (33, 48488),

Gene: Che9d_89 Start: 48164, Stop: 48358, Start Num: 25

Candidate Starts for Che9d_89:

(8, 48104), (Start: 25 @48164 has 211 MA's), (Start: 26 @48170 has 5 MA's), (33, 48212),

Gene: Cheesepuff_85 Start: 47876, Stop: 48070, Start Num: 25

Candidate Starts for Cheesepuff_85:

(16, 47837), (Start: 23 @47864 has 1 MA's), (Start: 25 @47876 has 211 MA's), (Start: 26 @47882 has 5 MA's), (Start: 28 @47888 has 1 MA's), (36, 47975),

Gene: Chevrolet_85 Start: 49486, Stop: 49680, Start Num: 25

Candidate Starts for Chevrolet_85:

(7, 49393), (15, 49441), (18, 49447), (19, 49456), (Start: 25 @49486 has 211 MA's), (Start: 26 @49492 has 5 MA's), (Start: 28 @49498 has 1 MA's), (33, 49534), (36, 49585),

Gene: Chuckly_75 Start: 45320, Stop: 45514, Start Num: 25

Candidate Starts for Chuckly_75:

(Start: 25 @45320 has 211 MA's), (Start: 26 @45326 has 5 MA's), (Start: 28 @45332 has 1 MA's), (37, 45431),

Gene: Clank_79 Start: 46321, Stop: 46515, Start Num: 25

Candidate Starts for Clank_79:

(16, 46282), (Start: 23 @46309 has 1 MA's), (Start: 25 @46321 has 211 MA's), (Start: 26 @46327 has 5 MA's), (Start: 28 @46333 has 1 MA's), (36, 46420), (37, 46432),

Gene: Clifton_70 Start: 46275, Stop: 46469, Start Num: 25

Candidate Starts for Clifton_70:

(Start: 25 @46275 has 211 MA's), (Start: 26 @46281 has 5 MA's), (Start: 28 @46287 has 1 MA's),

Gene: Coco12_74 Start: 48133, Stop: 48327, Start Num: 25

Candidate Starts for Coco12_74:

(16, 48094), (Start: 23 @48121 has 1 MA's), (Start: 25 @48133 has 211 MA's), (Start: 26 @48139 has 5 MA's), (Start: 28 @48145 has 1 MA's), (36, 48232),

Gene: Corium_74 Start: 48963, Stop: 49157, Start Num: 25

Candidate Starts for Corium_74:

(20, 48942), (Start: 25 @48963 has 211 MA's), (Start: 26 @48969 has 5 MA's), (Start: 28 @48975 has 1 MA's),

Gene: Cornie_73 Start: 46457, Stop: 46651, Start Num: 25

Candidate Starts for Cornie_73:

(20, 46436), (Start: 25 @46457 has 211 MA's), (Start: 26 @46463 has 5 MA's), (Start: 28 @46469 has 1 MA's), (37, 46568),

Gene: Cornucopia_79 Start: 47061, Stop: 47261, Start Num: 25

Candidate Starts for Cornucopia_79:

(20, 47040), (Start: 25 @47061 has 211 MA's), (Start: 26 @47067 has 5 MA's), (Start: 28 @47073 has 1 MA's),

Gene: Crumble_75 Start: 44664, Stop: 44858, Start Num: 25

Candidate Starts for Crumble_75:

(Start: 25 @44664 has 211 MA's), (Start: 26 @44670 has 5 MA's), (Start: 28 @44676 has 1 MA's), (33, 44712),

Gene: DLane_78 Start: 48965, Stop: 49144, Start Num: 29

Candidate Starts for DLane_78:

(Start: 29 @48965 has 8 MA's),

Gene: DRBy19_81 Start: 50004, Stop: 50198, Start Num: 25

Candidate Starts for DRBy19_81:

(Start: 25 @50004 has 211 MA's), (Start: 26 @50010 has 5 MA's), (Start: 28 @50016 has 1 MA's),

Gene: DaWorst_78 Start: 47602, Stop: 47796, Start Num: 25

Candidate Starts for DaWorst_78:

(11, 47551), (Start: 23 @47590 has 1 MA's), (Start: 25 @47602 has 211 MA's), (Start: 26 @47608 has 5 MA's), (Start: 28 @47614 has 1 MA's), (33, 47650), (37, 47713),

Gene: DaddyRickover_82 Start: 49806, Stop: 50000, Start Num: 25

Candidate Starts for DaddyRickover_82:

(10, 49755), (20, 49785), (Start: 25 @49806 has 211 MA's), (Start: 26 @49812 has 5 MA's), (34, 49854), (37, 49917),

Gene: Daenerys_78 Start: 49582, Stop: 49776, Start Num: 25

Candidate Starts for Daenerys_78:

(16, 49543), (Start: 23 @49570 has 1 MA's), (Start: 25 @49582 has 211 MA's), (Start: 26 @49588 has 5 MA's), (33, 49630), (38, 49702), (39, 49720),

Gene: Dante_77 Start: 49912, Stop: 50106, Start Num: 25

Candidate Starts for Dante_77:

(8, 49855), (Start: 25 @49912 has 211 MA's), (Start: 26 @49918 has 5 MA's), (Start: 28 @49924 has 1 MA's),

Gene: DeadP_79 Start: 47021, Stop: 47215, Start Num: 25

Candidate Starts for DeadP_79:

(2, 46781), (6, 46928), (12, 46970), (Start: 24 @47009 has 1 MA's), (Start: 25 @47021 has 211 MA's), (Start: 26 @47027 has 5 MA's), (Start: 28 @47033 has 1 MA's), (36, 47120),

Gene: Deb65_72 Start: 47304, Stop: 47498, Start Num: 25

Candidate Starts for Deb65_72:

(16, 47265), (Start: 23 @47292 has 1 MA's), (Start: 25 @47304 has 211 MA's), (Start: 26 @47310 has 5 MA's), (33, 47352), (38, 47424), (39, 47442),

Gene: Demsculpinboyz_87 Start: 46593, Stop: 46787, Start Num: 25

Candidate Starts for Demsculpinboyz_87:

(Start: 25 @46593 has 211 MA's), (Start: 26 @46599 has 5 MA's), (33, 46641),

Gene: DillTech15_85 Start: 48458, Stop: 48637, Start Num: 29

Candidate Starts for DillTech15_85:

(Start: 29 @48458 has 8 MA's),

Gene: DirtMcgirt_75 Start: 45127, Stop: 45321, Start Num: 25

Candidate Starts for DirtMcgirt_75:

(10, 45076), (20, 45106), (Start: 25 @45127 has 211 MA's), (Start: 26 @45133 has 5 MA's), (34, 45175),

Gene: DoRead_79 Start: 46468, Stop: 46662, Start Num: 25

Candidate Starts for DoRead_79:

(5, 46375), (10, 46417), (22, 46456), (Start: 25 @46468 has 211 MA's), (Start: 26 @46474 has 5 MA's), (Start: 28 @46480 has 1 MA's), (38, 46588),

Gene: Donkeykong_82 Start: 49531, Stop: 49737, Start Num: 23

Candidate Starts for Donkeykong_82:

(16, 49504), (Start: 23 @49531 has 1 MA's), (Start: 25 @49543 has 211 MA's), (Start: 26 @49549 has 5 MA's), (Start: 28 @49555 has 1 MA's), (33, 49591),

Gene: Doomphist_82 Start: 49215, Stop: 49409, Start Num: 25

Candidate Starts for Doomphist_82:

(10, 49164), (20, 49194), (Start: 25 @49215 has 211 MA's), (Start: 26 @49221 has 5 MA's), (34, 49263), (37, 49326),

Gene: Doomslug_94 Start: 50634, Stop: 50828, Start Num: 25

Candidate Starts for Doomslug_94:

(Start: 24 @50622 has 1 MA's), (Start: 25 @50634 has 211 MA's), (Start: 26 @50640 has 5 MA's),
(Start: 28 @50646 has 1 MA's), (36, 50733), (37, 50745),

Gene: Dorothy_80 Start: 50033, Stop: 50227, Start Num: 25

Candidate Starts for Dorothy_80:

(16, 49994), (Start: 23 @50021 has 1 MA's), (Start: 25 @50033 has 211 MA's), (Start: 26 @50039 has
5 MA's), (33, 50081), (38, 50153), (39, 50171),

Gene: DosHalletts_81 Start: 49751, Stop: 49945, Start Num: 25

Candidate Starts for DosHalletts_81:

(Start: 25 @49751 has 211 MA's), (Start: 26 @49757 has 5 MA's), (Start: 28 @49763 has 1 MA's), (37,
49862),

Gene: DotProduct_74 Start: 46756, Stop: 46950, Start Num: 25

Candidate Starts for DotProduct_74:

(8, 46699), (Start: 25 @46756 has 211 MA's), (Start: 26 @46762 has 5 MA's), (Start: 28 @46768 has 1
MA's), (37, 46867),

Gene: Doug_78 Start: 49287, Stop: 49481, Start Num: 25

Candidate Starts for Doug_78:

(22, 49275), (Start: 25 @49287 has 211 MA's), (Start: 26 @49293 has 5 MA's), (33, 49335),

Gene: Drago_73 Start: 45130, Stop: 45324, Start Num: 25

Candidate Starts for Drago_73:

(10, 45079), (20, 45109), (Start: 25 @45130 has 211 MA's), (Start: 26 @45136 has 5 MA's), (34,
45178),

Gene: Eish_81 Start: 49043, Stop: 49237, Start Num: 25

Candidate Starts for Eish_81:

(20, 49022), (Start: 25 @49043 has 211 MA's), (Start: 26 @49049 has 5 MA's), (Start: 28 @49055 has
1 MA's), (34, 49091),

Gene: EleanorGeorge_79 Start: 48608, Stop: 48808, Start Num: 25

Candidate Starts for EleanorGeorge_79:

(Start: 25 @48608 has 211 MA's), (Start: 26 @48614 has 5 MA's), (Start: 28 @48620 has 1 MA's), (39,
48746),

Gene: EmiMonkey_78 Start: 51977, Stop: 52183, Start Num: 22

Candidate Starts for EmiMonkey_78:

(22, 51977), (Start: 25 @51989 has 211 MA's), (Start: 26 @51995 has 5 MA's), (33, 52037),

Gene: Emma_81 Start: 47424, Stop: 47612, Start Num: 26

Candidate Starts for Emma_81:

(Start: 26 @47424 has 5 MA's), (33, 47466),

Gene: Emmaloid_82 Start: 48353, Stop: 48553, Start Num: 25

Candidate Starts for Emmaloid_82:

(14, 48302), (Start: 24 @48341 has 1 MA's), (Start: 25 @48353 has 211 MA's), (Start: 26 @48359 has
5 MA's), (Start: 28 @48365 has 1 MA's), (33, 48401), (38, 48473), (39, 48491),

Gene: Empress_77 Start: 48026, Stop: 48220, Start Num: 25

Candidate Starts for Empress_77:

(10, 47975), (20, 48005), (Start: 25 @48026 has 211 MA's), (Start: 26 @48032 has 5 MA's), (34, 48074), (37, 48137),

Gene: Enby_77 Start: 45406, Stop: 45600, Start Num: 25

Candidate Starts for Enby_77:

(10, 45355), (20, 45385), (Start: 25 @45406 has 211 MA's), (Start: 26 @45412 has 5 MA's), (34, 45454),

Gene: Enzomatic_85 Start: 46190, Stop: 46384, Start Num: 25

Candidate Starts for Enzomatic_85:

(Start: 25 @46190 has 211 MA's), (Start: 26 @46196 has 5 MA's),

Gene: Eradicator_68 Start: 45850, Stop: 46044, Start Num: 25

Candidate Starts for Eradicator_68:

(22, 45838), (Start: 25 @45850 has 211 MA's), (Start: 26 @45856 has 5 MA's), (33, 45898),

Gene: Estave1_84 Start: 51480, Stop: 51674, Start Num: 25

Candidate Starts for Estave1_84:

(7, 51387), (15, 51435), (18, 51441), (19, 51450), (Start: 25 @51480 has 211 MA's), (Start: 26 @51486 has 5 MA's), (Start: 28 @51492 has 1 MA's),

Gene: Fancypants_82 Start: 49778, Stop: 49978, Start Num: 25

Candidate Starts for Fancypants_82:

(7, 49685), (15, 49733), (18, 49739), (19, 49748), (Start: 25 @49778 has 211 MA's), (Start: 26 @49784 has 5 MA's), (Start: 28 @49790 has 1 MA's),

Gene: Fastidio_78 Start: 45266, Stop: 45445, Start Num: 29

Candidate Starts for Fastidio_78:

(Start: 29 @45266 has 8 MA's),

Gene: Filuzino_79 Start: 49942, Stop: 50127, Start Num: 27

Candidate Starts for Filuzino_79:

(Start: 27 @49942 has 1 MA's), (30, 49951), (31, 49957), (32, 49966), (35, 49996),

Gene: Firehouse51_74 Start: 49005, Stop: 49199, Start Num: 25

Candidate Starts for Firehouse51_74:

(8, 48948), (Start: 25 @49005 has 211 MA's), (Start: 26 @49011 has 5 MA's), (Start: 28 @49017 has 1 MA's), (37, 49116),

Gene: Flathead_77 Start: 47586, Stop: 47780, Start Num: 25

Candidate Starts for Flathead_77:

(7, 47493), (15, 47541), (18, 47547), (19, 47556), (Start: 25 @47586 has 211 MA's), (Start: 26 @47592 has 5 MA's), (Start: 28 @47598 has 1 MA's), (36, 47685), (37, 47697),

Gene: Florinda_90 Start: 50668, Stop: 50862, Start Num: 25

Candidate Starts for Florinda_90:

(20, 50647), (Start: 25 @50668 has 211 MA's), (Start: 26 @50674 has 5 MA's), (Start: 28 @50680 has 1 MA's), (34, 50716),

Gene: Frankie_87 Start: 49956, Stop: 50150, Start Num: 25

Candidate Starts for Frankie_87:

(16, 49917), (Start: 23 @49944 has 1 MA's), (Start: 25 @49956 has 211 MA's), (Start: 26 @49962 has 5 MA's), (Start: 28 @49968 has 1 MA's), (33, 50004),

Gene: FreddyB_87 Start: 49586, Stop: 49780, Start Num: 25

Candidate Starts for FreddyB_87:

(16, 49547), (Start: 23 @49574 has 1 MA's), (Start: 25 @49586 has 211 MA's), (Start: 26 @49592 has 5 MA's), (Start: 28 @49598 has 1 MA's), (33, 49634),

Gene: Fruitloop_73 Start: 47530, Stop: 47709, Start Num: 29

Candidate Starts for Fruitloop_73:

(Start: 29 @47530 has 8 MA's), (37, 47626),

Gene: GUmbie_72 Start: 47176, Stop: 47370, Start Num: 25

Candidate Starts for GUmbie_72:

(8, 47119), (Start: 25 @47176 has 211 MA's), (Start: 26 @47182 has 5 MA's), (Start: 28 @47188 has 1 MA's), (37, 47287),

Gene: Galactic_77 Start: 47768, Stop: 47962, Start Num: 25

Candidate Starts for Galactic_77:

(Start: 25 @47768 has 211 MA's), (Start: 26 @47774 has 5 MA's), (Start: 28 @47780 has 1 MA's), (37, 47879),

Gene: Gandalph_76 Start: 45213, Stop: 45407, Start Num: 25

Candidate Starts for Gandalph_76:

(5, 45120), (10, 45162), (22, 45201), (Start: 25 @45213 has 211 MA's), (Start: 26 @45219 has 5 MA's), (Start: 28 @45225 has 1 MA's), (33, 45261),

Gene: Geralt_72 Start: 47302, Stop: 47496, Start Num: 25

Candidate Starts for Geralt_72:

(16, 47263), (Start: 23 @47290 has 1 MA's), (Start: 25 @47302 has 211 MA's), (Start: 26 @47308 has 5 MA's), (33, 47350), (38, 47422), (39, 47440),

Gene: GigiOuiOui_72 Start: 46847, Stop: 47041, Start Num: 25

Candidate Starts for GigiOuiOui_72:

(8, 46790), (Start: 25 @46847 has 211 MA's), (Start: 26 @46853 has 5 MA's), (Start: 28 @46859 has 1 MA's), (37, 46958),

Gene: Girafales_87 Start: 50273, Stop: 50467, Start Num: 25

Candidate Starts for Girafales_87:

(20, 50252), (Start: 25 @50273 has 211 MA's), (Start: 26 @50279 has 5 MA's), (Start: 28 @50285 has 1 MA's), (34, 50321),

Gene: Girr_74 Start: 48056, Stop: 48250, Start Num: 25

Candidate Starts for Girr_74:

(7, 47963), (15, 48011), (18, 48017), (19, 48026), (Start: 25 @48056 has 211 MA's), (Start: 26 @48062 has 5 MA's), (Start: 28 @48068 has 1 MA's), (36, 48155), (37, 48167),

Gene: Gorge_79 Start: 49214, Stop: 49408, Start Num: 25

Candidate Starts for Gorge_79:

(Start: 25 @49214 has 211 MA's), (Start: 26 @49220 has 5 MA's), (Start: 28 @49226 has 1 MA's),

Gene: Grimmer_88 Start: 48237, Stop: 48431, Start Num: 26

Candidate Starts for Grimmer_88:

(Start: 26 @48237 has 5 MA's),

Gene: Hades_78 Start: 46407, Stop: 46607, Start Num: 25
Candidate Starts for Hades_78:
(7, 46314), (15, 46362), (18, 46368), (19, 46377), (Start: 25 @46407 has 211 MA's), (Start: 26 @46413 has 5 MA's), (Start: 28 @46419 has 1 MA's),

Gene: Hamulus_78 Start: 48238, Stop: 48432, Start Num: 25
Candidate Starts for Hamulus_78:
(Start: 25 @48238 has 211 MA's), (Start: 26 @48244 has 5 MA's), (Start: 28 @48250 has 1 MA's),

Gene: Harley_77 Start: 47356, Stop: 47550, Start Num: 25
Candidate Starts for Harley_77:
(10, 47305), (20, 47335), (Start: 25 @47356 has 211 MA's), (Start: 26 @47362 has 5 MA's), (Start: 28 @47368 has 1 MA's), (34, 47404),

Gene: Hegedechwinu_79 Start: 46787, Stop: 46981, Start Num: 25
Candidate Starts for Hegedechwinu_79:
(Start: 25 @46787 has 211 MA's), (Start: 26 @46793 has 5 MA's), (Start: 28 @46799 has 1 MA's), (37, 46898),

Gene: Hlubikazi_73 Start: 45616, Stop: 45810, Start Num: 25
Candidate Starts for Hlubikazi_73:
(20, 45595), (Start: 25 @45616 has 211 MA's), (Start: 26 @45622 has 5 MA's), (Start: 28 @45628 has 1 MA's), (37, 45727),

Gene: IMpilo_72 Start: 45266, Stop: 45451, Start Num: 29
Candidate Starts for IMpilo_72:
(Start: 29 @45266 has 8 MA's), (37, 45362),

Gene: IbOuu_72 Start: 46081, Stop: 46275, Start Num: 25
Candidate Starts for IbOuu_72:
(Start: 25 @46081 has 211 MA's), (Start: 26 @46087 has 5 MA's), (Start: 28 @46093 has 1 MA's), (37, 46192),

Gene: Ibhubesi_75 Start: 45530, Stop: 45730, Start Num: 25
Candidate Starts for Ibhubesi_75:
(20, 45509), (Start: 25 @45530 has 211 MA's), (Start: 26 @45536 has 5 MA's), (Start: 28 @45542 has 1 MA's), (38, 45650),

Gene: Inventum_77 Start: 48218, Stop: 48412, Start Num: 25
Candidate Starts for Inventum_77:
(16, 48179), (Start: 23 @48206 has 1 MA's), (Start: 25 @48218 has 211 MA's), (Start: 26 @48224 has 5 MA's), (33, 48266), (38, 48338), (39, 48356),

Gene: IrishSherpFalk_78 Start: 48590, Stop: 48784, Start Num: 25
Candidate Starts for IrishSherpFalk_78:
(20, 48569), (Start: 25 @48590 has 211 MA's), (Start: 26 @48596 has 5 MA's), (Start: 28 @48602 has 1 MA's),

Gene: Jabbawokkie_87 Start: 46718, Stop: 46912, Start Num: 25
Candidate Starts for Jabbawokkie_87:
(8, 46661), (Start: 25 @46718 has 211 MA's), (Start: 26 @46724 has 5 MA's), (Start: 28 @46730 has 1 MA's),

Gene: JalFarm20_86 Start: 48804, Stop: 48998, Start Num: 25

Candidate Starts for JalFarm20_86:

(8, 48747), (Start: 25 @48804 has 211 MA's), (Start: 26 @48810 has 5 MA's), (Start: 28 @48816 has 1 MA's), (37, 48915),

Gene: James_78 Start: 49339, Stop: 49533, Start Num: 25

Candidate Starts for James_78:

(Start: 25 @49339 has 211 MA's), (Start: 26 @49345 has 5 MA's), (Start: 28 @49351 has 1 MA's),

Gene: Jant_79 Start: 46734, Stop: 46928, Start Num: 25

Candidate Starts for Jant_79:

(8, 46677), (Start: 25 @46734 has 211 MA's), (Start: 26 @46740 has 5 MA's), (Start: 28 @46746 has 1 MA's), (36, 46833), (37, 46845),

Gene: Jarcob_77 Start: 48936, Stop: 49130, Start Num: 25

Candidate Starts for Jarcob_77:

(Start: 25 @48936 has 211 MA's), (Start: 26 @48942 has 5 MA's), (Start: 28 @48948 has 1 MA's),

Gene: Jennelsea_77 Start: 48100, Stop: 48285, Start Num: 29

Candidate Starts for Jennelsea_77:

(Start: 26 @48091 has 5 MA's), (Start: 29 @48100 has 8 MA's), (37, 48196), (39, 48223),

Gene: Jinglebell_82 Start: 48469, Stop: 48663, Start Num: 25

Candidate Starts for Jinglebell_82:

(Start: 25 @48469 has 211 MA's), (Start: 26 @48475 has 5 MA's), (Start: 28 @48481 has 1 MA's),

Gene: Job42_79 Start: 51003, Stop: 51203, Start Num: 25

Candidate Starts for Job42_79:

(13, 50952), (21, 50982), (Start: 25 @51003 has 211 MA's), (Start: 26 @51009 has 5 MA's), (33, 51051),

Gene: JoeyJr_79 Start: 49207, Stop: 49401, Start Num: 25

Candidate Starts for JoeyJr_79:

(16, 49168), (Start: 23 @49195 has 1 MA's), (Start: 25 @49207 has 211 MA's), (Start: 26 @49213 has 5 MA's), (33, 49255), (38, 49327), (39, 49345),

Gene: Juice456_74 Start: 46952, Stop: 47146, Start Num: 25

Candidate Starts for Juice456_74:

(16, 46913), (Start: 23 @46940 has 1 MA's), (Start: 25 @46952 has 211 MA's), (Start: 26 @46958 has 5 MA's), (Start: 28 @46964 has 1 MA's),

Gene: Juniper1_76 Start: 47591, Stop: 47791, Start Num: 25

Candidate Starts for Juniper1_76:

(9, 47531), (Start: 25 @47591 has 211 MA's), (Start: 26 @47597 has 5 MA's),

Gene: Karhdo_76 Start: 46840, Stop: 47034, Start Num: 25

Candidate Starts for Karhdo_76:

(16, 46801), (Start: 23 @46828 has 1 MA's), (Start: 25 @46840 has 211 MA's), (Start: 26 @46846 has 5 MA's), (Start: 28 @46852 has 1 MA's), (33, 46888),

Gene: Kersh_79 Start: 50026, Stop: 50220, Start Num: 25

Candidate Starts for Kersh_79:

(16, 49987), (Start: 23 @50014 has 1 MA's), (Start: 25 @50026 has 211 MA's), (Start: 26 @50032 has 5 MA's), (Start: 28 @50038 has 1 MA's), (33, 50074),

Gene: Kimberlium_77 Start: 47081, Stop: 47275, Start Num: 25

Candidate Starts for Kimberlium_77:

(16, 47042), (Start: 23 @47069 has 1 MA's), (Start: 25 @47081 has 211 MA's), (Start: 26 @47087 has 5 MA's), (Start: 28 @47093 has 1 MA's),

Gene: KingJulian_80 Start: 48963, Stop: 49157, Start Num: 25

Candidate Starts for KingJulian_80:

(20, 48942), (Start: 25 @48963 has 211 MA's), (Start: 26 @48969 has 5 MA's), (Start: 28 @48975 has 1 MA's),

Gene: KingMidas_78 Start: 48441, Stop: 48635, Start Num: 25

Candidate Starts for KingMidas_78:

(10, 48390), (20, 48420), (Start: 25 @48441 has 211 MA's), (Start: 26 @48447 has 5 MA's), (34, 48489), (37, 48552),

Gene: Kingsley_81 Start: 50278, Stop: 50472, Start Num: 25

Candidate Starts for Kingsley_81:

(20, 50257), (Start: 25 @50278 has 211 MA's), (Start: 26 @50284 has 5 MA's), (Start: 28 @50290 has 1 MA's), (37, 50389),

Gene: Koella_69 Start: 43838, Stop: 44032, Start Num: 25

Candidate Starts for Koella_69:

(16, 43799), (Start: 23 @43826 has 1 MA's), (Start: 25 @43838 has 211 MA's), (Start: 26 @43844 has 5 MA's), (Start: 28 @43850 has 1 MA's), (33, 43886),

Gene: Krakatau_73 Start: 44496, Stop: 44690, Start Num: 25

Candidate Starts for Krakatau_73:

(16, 44457), (Start: 23 @44484 has 1 MA's), (Start: 25 @44496 has 211 MA's), (Start: 26 @44502 has 5 MA's), (Start: 28 @44508 has 1 MA's), (37, 44607),

Gene: KristaRAM_76 Start: 47138, Stop: 47332, Start Num: 25

Candidate Starts for KristaRAM_76:

(5, 47045), (10, 47087), (22, 47126), (Start: 25 @47138 has 211 MA's), (Start: 26 @47144 has 5 MA's), (Start: 28 @47150 has 1 MA's),

Gene: LastJedi_69 Start: 46413, Stop: 46607, Start Num: 25

Candidate Starts for LastJedi_69:

(16, 46374), (Start: 23 @46401 has 1 MA's), (Start: 25 @46413 has 211 MA's), (Start: 26 @46419 has 5 MA's), (Start: 28 @46425 has 1 MA's), (33, 46461),

Gene: Latretium_74 Start: 45801, Stop: 45995, Start Num: 25

Candidate Starts for Latretium_74:

(Start: 25 @45801 has 211 MA's), (Start: 26 @45807 has 5 MA's), (33, 45849),

Gene: Leozinho_77 Start: 45874, Stop: 46068, Start Num: 25

Candidate Starts for Leozinho_77:

(4, 45685), (Start: 25 @45874 has 211 MA's), (Start: 26 @45880 has 5 MA's), (33, 45922),

Gene: Leperchaun_77 Start: 48441, Stop: 48635, Start Num: 25

Candidate Starts for Leperchaun_77:

(16, 48402), (Start: 23 @48429 has 1 MA's), (Start: 25 @48441 has 211 MA's), (Start: 26 @48447 has 5 MA's), (33, 48489), (38, 48561), (39, 48579),

Gene: LilMoolah_76 Start: 47994, Stop: 48188, Start Num: 25

Candidate Starts for LilMoolah_76:

(8, 47934), (Start: 25 @47994 has 211 MA's), (Start: 26 @48000 has 5 MA's), (33, 48042),

Gene: LittleShirley_84 Start: 48939, Stop: 49118, Start Num: 29

Candidate Starts for LittleShirley_84:

(Start: 29 @48939 has 8 MA's),

Gene: Lizziana_82 Start: 49662, Stop: 49856, Start Num: 25

Candidate Starts for Lizziana_82:

(Start: 25 @49662 has 211 MA's), (Start: 26 @49668 has 5 MA's), (Start: 28 @49674 has 1 MA's),

Gene: Llama_82 Start: 48325, Stop: 48519, Start Num: 25

Candidate Starts for Llama_82:

(Start: 25 @48325 has 211 MA's), (Start: 26 @48331 has 5 MA's), (Start: 28 @48337 has 1 MA's),

Gene: Llij_72 Start: 45284, Stop: 45478, Start Num: 25

Candidate Starts for Llij_72:

(10, 45233), (20, 45263), (Start: 25 @45284 has 211 MA's), (Start: 26 @45290 has 5 MA's), (34, 45332),

Gene: Lorde_76 Start: 44571, Stop: 44765, Start Num: 25

Candidate Starts for Lorde_76:

(10, 44520), (20, 44550), (Start: 25 @44571 has 211 MA's), (Start: 26 @44577 has 5 MA's), (34, 44619),

Gene: Lucia_76 Start: 45419, Stop: 45613, Start Num: 25

Candidate Starts for Lucia_76:

(10, 45368), (20, 45398), (Start: 25 @45419 has 211 MA's), (Start: 26 @45425 has 5 MA's), (34, 45467),

Gene: LunaBlu_80 Start: 48426, Stop: 48626, Start Num: 25

Candidate Starts for LunaBlu_80:

(Start: 25 @48426 has 211 MA's), (Start: 26 @48432 has 5 MA's), (37, 48537),

Gene: LunaStella_77 Start: 47635, Stop: 47829, Start Num: 25

Candidate Starts for LunaStella_77:

(Start: 25 @47635 has 211 MA's), (Start: 26 @47641 has 5 MA's), (33, 47683),

Gene: MadMen_75 Start: 46684, Stop: 46878, Start Num: 25

Candidate Starts for MadMen_75:

(16, 46645), (Start: 23 @46672 has 1 MA's), (Start: 25 @46684 has 211 MA's), (Start: 26 @46690 has 5 MA's), (Start: 28 @46696 has 1 MA's), (33, 46732),

Gene: Madiba_82 Start: 49507, Stop: 49707, Start Num: 25

Candidate Starts for Madiba_82:

(9, 49447), (Start: 25 @49507 has 211 MA's), (Start: 26 @49513 has 5 MA's), (33, 49555), (39, 49645),

Gene: Mahavrat_74 Start: 45799, Stop: 45999, Start Num: 25

Candidate Starts for Mahavrat_74:

(9, 45739), (Start: 25 @45799 has 211 MA's), (Start: 26 @45805 has 5 MA's),

Gene: Mandlovu_73 Start: 45558, Stop: 45752, Start Num: 25

Candidate Starts for Mandlovu_73:

(20, 45537), (Start: 25 @45558 has 211 MA's), (Start: 26 @45564 has 5 MA's), (Start: 28 @45570 has 1 MA's), (37, 45669),

Gene: Mantra_75 Start: 47635, Stop: 47823, Start Num: 26

Candidate Starts for Mantra_75:

(Start: 26 @47635 has 5 MA's), (33, 47677),

Gene: Maravista_79 Start: 50796, Stop: 50978, Start Num: 28

Candidate Starts for Maravista_79:

(16, 50745), (Start: 23 @50772 has 1 MA's), (Start: 25 @50784 has 211 MA's), (Start: 26 @50790 has 5 MA's), (Start: 28 @50796 has 1 MA's), (33, 50832),

Gene: Marker_78 Start: 47091, Stop: 47291, Start Num: 25

Candidate Starts for Marker_78:

(13, 47040), (21, 47070), (Start: 25 @47091 has 211 MA's), (Start: 26 @47097 has 5 MA's), (33, 47139),

Gene: Martik_79 Start: 50085, Stop: 50279, Start Num: 25

Candidate Starts for Martik_79:

(10, 50034), (20, 50064), (Start: 25 @50085 has 211 MA's), (Start: 26 @50091 has 5 MA's),

Gene: Mattes_79 Start: 49339, Stop: 49533, Start Num: 25

Candidate Starts for Mattes_79:

(Start: 25 @49339 has 211 MA's), (Start: 26 @49345 has 5 MA's), (Start: 28 @49351 has 1 MA's),

Gene: Medindi_81 Start: 48713, Stop: 48892, Start Num: 29

Candidate Starts for Medindi_81:

(Start: 29 @48713 has 8 MA's), (37, 48809),

Gene: Melissauren88_71 Start: 45359, Stop: 45553, Start Num: 25

Candidate Starts for Melissauren88_71:

(16, 45320), (Start: 23 @45347 has 1 MA's), (Start: 25 @45359 has 211 MA's), (Start: 26 @45365 has 5 MA's), (Start: 28 @45371 has 1 MA's), (36, 45458), (37, 45470),

Gene: MilanaBonita_71 Start: 46445, Stop: 46639, Start Num: 25

Candidate Starts for MilanaBonita_71:

(8, 46388), (Start: 25 @46445 has 211 MA's), (Start: 26 @46451 has 5 MA's), (Start: 28 @46457 has 1 MA's), (37, 46556),

Gene: MilleniumForce_78 Start: 48391, Stop: 48585, Start Num: 25

Candidate Starts for MilleniumForce_78:

(Start: 25 @48391 has 211 MA's), (Start: 26 @48397 has 5 MA's), (Start: 28 @48403 has 1 MA's), (37, 48502),

Gene: MinionDave_73 Start: 47526, Stop: 47720, Start Num: 25

Candidate Starts for MinionDave_73:

(20, 47505), (Start: 25 @47526 has 211 MA's), (Start: 26 @47532 has 5 MA's), (34, 47574),

Gene: Minnie_75 Start: 49817, Stop: 50011, Start Num: 25

Candidate Starts for Minnie_75:

(16, 49778), (Start: 23 @49805 has 1 MA's), (Start: 25 @49817 has 211 MA's), (Start: 26 @49823 has 5 MA's), (Start: 28 @49829 has 1 MA's), (36, 49916), (37, 49928),

Gene: MisterCuddles_75 Start: 48056, Stop: 48250, Start Num: 25

Candidate Starts for MisterCuddles_75:

(7, 47963), (15, 48011), (18, 48017), (19, 48026), (Start: 25 @48056 has 211 MA's), (Start: 26 @48062 has 5 MA's), (Start: 28 @48068 has 1 MA's), (36, 48155), (37, 48167),

Gene: Modragons_80 Start: 48313, Stop: 48507, Start Num: 25

Candidate Starts for Modragons_80:

(Start: 25 @48313 has 211 MA's), (Start: 26 @48319 has 5 MA's), (Start: 28 @48325 has 1 MA's),

Gene: Moonbeam_79 Start: 48632, Stop: 48826, Start Num: 25

Candidate Starts for Moonbeam_79:

(Start: 23 @48620 has 1 MA's), (Start: 25 @48632 has 211 MA's), (Start: 26 @48638 has 5 MA's), (Start: 28 @48644 has 1 MA's),

Gene: Mova_77 Start: 46925, Stop: 47119, Start Num: 25

Candidate Starts for Mova_77:

(8, 46868), (Start: 25 @46925 has 211 MA's), (Start: 26 @46931 has 5 MA's), (Start: 28 @46937 has 1 MA's), (33, 46973),

Gene: Mozy_84 Start: 47336, Stop: 47542, Start Num: 24

Candidate Starts for Mozy_84:

(Start: 24 @47336 has 1 MA's), (Start: 25 @47348 has 211 MA's), (Start: 26 @47354 has 5 MA's), (Start: 28 @47360 has 1 MA's),

Gene: Ms6_76 Start: 44008, Stop: 44208, Start Num: 25

Candidate Starts for Ms6_76:

(9, 43951), (Start: 25 @44008 has 211 MA's), (Start: 26 @44014 has 5 MA's), (Start: 28 @44020 has 1 MA's), (37, 44119),

Gene: MulchExplorer_76 Start: 47080, Stop: 47274, Start Num: 25

Candidate Starts for MulchExplorer_76:

(16, 47041), (Start: 23 @47068 has 1 MA's), (Start: 25 @47080 has 211 MA's), (Start: 26 @47086 has 5 MA's), (Start: 28 @47092 has 1 MA's),

Gene: Mutaforma13_84 Start: 49054, Stop: 49248, Start Num: 25

Candidate Starts for Mutaforma13_84:

(10, 49003), (20, 49033), (Start: 25 @49054 has 211 MA's), (Start: 26 @49060 has 5 MA's), (34, 49102),

Gene: Mwanjiwa_81 Start: 49047, Stop: 49241, Start Num: 25

Candidate Starts for Mwanjiwa_81:

(5, 48954), (10, 48996), (22, 49035), (Start: 25 @49047 has 211 MA's), (Start: 26 @49053 has 5 MA's), (Start: 28 @49059 has 1 MA's), (33, 49095),

Gene: NewHope4_79 Start: 46336, Stop: 46530, Start Num: 25

Candidate Starts for NewHope4_79:

(Start: 25 @46336 has 211 MA's), (Start: 26 @46342 has 5 MA's),

Gene: Nimbo_71 Start: 47305, Stop: 47499, Start Num: 25

Candidate Starts for Nimbo_71:

(16, 47266), (Start: 23 @47293 has 1 MA's), (Start: 25 @47305 has 211 MA's), (Start: 26 @47311 has 5 MA's), (33, 47353), (38, 47425), (39, 47443),

Gene: Nitzel_72 Start: 45364, Stop: 45558, Start Num: 25

Candidate Starts for Nitzel_72:

(Start: 24 @45352 has 1 MA's), (Start: 25 @45364 has 211 MA's), (Start: 26 @45370 has 5 MA's), (36, 45463), (37, 45475),

Gene: Nivrat_74 Start: 47867, Stop: 48061, Start Num: 25

Candidate Starts for Nivrat_74:

(8, 47807), (Start: 25 @47867 has 211 MA's), (Start: 26 @47873 has 5 MA's), (33, 47915),

Gene: NormanBulbieJr_74 Start: 47852, Stop: 48046, Start Num: 25

Candidate Starts for NormanBulbieJr_74:

(16, 47813), (Start: 23 @47840 has 1 MA's), (Start: 25 @47852 has 211 MA's), (Start: 26 @47858 has 5 MA's), (Start: 28 @47864 has 1 MA's), (33, 47900),

Gene: Ochi17_81 Start: 47920, Stop: 48114, Start Num: 25

Candidate Starts for Ochi17_81:

(Start: 25 @47920 has 211 MA's), (Start: 26 @47926 has 5 MA's), (Start: 28 @47932 has 1 MA's),

Gene: OfUltron_83 Start: 48469, Stop: 48663, Start Num: 25

Candidate Starts for OfUltron_83:

(Start: 25 @48469 has 211 MA's), (Start: 26 @48475 has 5 MA's), (Start: 28 @48481 has 1 MA's),

Gene: Ogopogo_83 Start: 47640, Stop: 47834, Start Num: 25

Candidate Starts for Ogopogo_83:

(20, 47619), (Start: 25 @47640 has 211 MA's), (Start: 26 @47646 has 5 MA's), (Start: 28 @47652 has 1 MA's), (37, 47751),

Gene: Okabe_74 Start: 45051, Stop: 45239, Start Num: 26

Candidate Starts for Okabe_74:

(8, 44985), (Start: 25 @45045 has 211 MA's), (Start: 26 @45051 has 5 MA's), (33, 45093), (36, 45144), (37, 45156),

Gene: Oksu_82 Start: 49980, Stop: 50174, Start Num: 25

Candidate Starts for Oksu_82:

(16, 49941), (Start: 23 @49968 has 1 MA's), (Start: 25 @49980 has 211 MA's), (Start: 26 @49986 has 5 MA's), (Start: 28 @49992 has 1 MA's), (36, 50079),

Gene: OldBen_76 Start: 48697, Stop: 48891, Start Num: 25

Candidate Starts for OldBen_76:

(16, 48658), (Start: 23 @48685 has 1 MA's), (Start: 25 @48697 has 211 MA's), (Start: 26 @48703 has 5 MA's), (33, 48745), (38, 48817), (39, 48835),

Gene: OlympiaSaint_77 Start: 48281, Stop: 48475, Start Num: 25

Candidate Starts for OlympiaSaint_77:

(Start: 25 @48281 has 211 MA's), (Start: 26 @48287 has 5 MA's), (Start: 28 @48293 has 1 MA's),

Gene: Ovechkin_80 Start: 48621, Stop: 48815, Start Num: 25

Candidate Starts for Ovechkin_80:

(7, 48528), (15, 48576), (18, 48582), (19, 48591), (Start: 25 @48621 has 211 MA's), (Start: 26 @48627 has 5 MA's), (Start: 28 @48633 has 1 MA's), (37, 48732),

Gene: OwlsT2W_79 Start: 47966, Stop: 48160, Start Num: 25

Candidate Starts for OwlsT2W_79:

(Start: 25 @47966 has 211 MA's), (Start: 26 @47972 has 5 MA's), (Start: 28 @47978 has 1 MA's),

Gene: PHappiness_79 Start: 49526, Stop: 49720, Start Num: 25

Candidate Starts for PHappiness_79:

(16, 49487), (Start: 23 @49514 has 1 MA's), (Start: 25 @49526 has 211 MA's), (Start: 26 @49532 has 5 MA's), (33, 49574), (38, 49646), (39, 49664),

Gene: PMC_73 Start: 46741, Stop: 46935, Start Num: 25

Candidate Starts for PMC_73:

(Start: 25 @46741 has 211 MA's), (Start: 26 @46747 has 5 MA's), (Start: 28 @46753 has 1 MA's), (36, 46840), (37, 46852),

Gene: Pacc40_71 Start: 48080, Stop: 48280, Start Num: 25

Candidate Starts for Pacc40_71:

(18, 48041), (Start: 24 @48068 has 1 MA's), (Start: 25 @48080 has 211 MA's), (Start: 26 @48086 has 5 MA's), (Start: 28 @48092 has 1 MA's), (39, 48218),

Gene: PatoPoderoso_74 Start: 48963, Stop: 49157, Start Num: 25

Candidate Starts for PatoPoderoso_74:

(20, 48942), (Start: 25 @48963 has 211 MA's), (Start: 26 @48969 has 5 MA's), (Start: 28 @48975 has 1 MA's),

Gene: Peridot_82 Start: 48639, Stop: 48833, Start Num: 25

Candidate Starts for Peridot_82:

(8, 48582), (Start: 25 @48639 has 211 MA's), (Start: 26 @48645 has 5 MA's), (Start: 28 @48651 has 1 MA's),

Gene: Phalconet_74 Start: 46862, Stop: 47062, Start Num: 25

Candidate Starts for Phalconet_74:

(9, 46805), (Start: 25 @46862 has 211 MA's), (Start: 26 @46868 has 5 MA's), (Start: 28 @46874 has 1 MA's), (37, 46973),

Gene: Phanphagia_76 Start: 48074, Stop: 48268, Start Num: 25

Candidate Starts for Phanphagia_76:

(20, 48053), (Start: 25 @48074 has 211 MA's), (Start: 26 @48080 has 5 MA's), (Start: 28 @48086 has 1 MA's), (37, 48185),

Gene: Phasih_74 Start: 46843, Stop: 47037, Start Num: 25

Candidate Starts for Phasih_74:

(20, 46822), (Start: 25 @46843 has 211 MA's), (Start: 26 @46849 has 5 MA's), (Start: 28 @46855 has 1 MA's),

Gene: Phatniss_73 Start: 46379, Stop: 46573, Start Num: 25

Candidate Starts for Phatniss_73:

(10, 46328), (20, 46358), (Start: 25 @46379 has 211 MA's), (Start: 26 @46385 has 5 MA's), (34, 46427),

Gene: PhesterPhotato_81 Start: 48042, Stop: 48236, Start Num: 25

Candidate Starts for PhesterPhotato_81:

(20, 48021), (Start: 25 @48042 has 211 MA's), (Start: 26 @48048 has 5 MA's), (Start: 28 @48054 has 1 MA's), (37, 48153),

Gene: Philus_80 Start: 49980, Stop: 50174, Start Num: 25

Candidate Starts for Philus_80:

(Start: 25 @49980 has 211 MA's), (Start: 26 @49986 has 5 MA's), (Start: 28 @49992 has 1 MA's),

Gene: PhlipPhlop_79 Start: 51989, Stop: 52183, Start Num: 25

Candidate Starts for PhlipPhlop_79:

(22, 51977), (Start: 25 @51989 has 211 MA's), (Start: 26 @51995 has 5 MA's), (33, 52037),

Gene: Pippy_74 Start: 46980, Stop: 47174, Start Num: 25

Candidate Starts for Pippy_74:

(10, 46929), (20, 46959), (Start: 25 @46980 has 211 MA's), (Start: 26 @46986 has 5 MA's), (34, 47028),

Gene: Plumbus_79 Start: 45679, Stop: 45873, Start Num: 25

Candidate Starts for Plumbus_79:

(Start: 25 @45679 has 211 MA's), (Start: 26 @45685 has 5 MA's), (Start: 28 @45691 has 1 MA's),

Gene: Poenanya_82 Start: 49215, Stop: 49409, Start Num: 25

Candidate Starts for Poenanya_82:

(10, 49164), (20, 49194), (Start: 25 @49215 has 211 MA's), (Start: 26 @49221 has 5 MA's), (34, 49263), (37, 49326),

Gene: Polka14_83 Start: 50005, Stop: 50199, Start Num: 25

Candidate Starts for Polka14_83:

(10, 49954), (20, 49984), (Start: 25 @50005 has 211 MA's), (Start: 26 @50011 has 5 MA's), (34, 50053), (37, 50116),

Gene: Pollywog_78 Start: 48909, Stop: 49103, Start Num: 25

Candidate Starts for Pollywog_78:

(8, 48849), (Start: 25 @48909 has 211 MA's), (Start: 26 @48915 has 5 MA's), (33, 48957),

Gene: Polo2Bam_84 Start: 46190, Stop: 46384, Start Num: 25

Candidate Starts for Polo2Bam_84:

(Start: 25 @46190 has 211 MA's), (Start: 26 @46196 has 5 MA's),

Gene: PopTart_68 Start: 44946, Stop: 45140, Start Num: 25

Candidate Starts for PopTart_68:

(Start: 25 @44946 has 211 MA's), (Start: 26 @44952 has 5 MA's), (Start: 28 @44958 has 1 MA's),

Gene: Priscilla_75 Start: 47950, Stop: 48144, Start Num: 25

Candidate Starts for Priscilla_75:

(16, 47911), (Start: 23 @47938 has 1 MA's), (Start: 25 @47950 has 211 MA's), (Start: 26 @47956 has 5 MA's), (Start: 28 @47962 has 1 MA's), (33, 47998),

Gene: QuickMath_76 Start: 47304, Stop: 47498, Start Num: 25

Candidate Starts for QuickMath_76:

(16, 47265), (Start: 23 @47292 has 1 MA's), (Start: 25 @47304 has 211 MA's), (Start: 26 @47310 has 5 MA's), (Start: 28 @47316 has 1 MA's),

Gene: Quico_87 Start: 50488, Stop: 50682, Start Num: 25
Candidate Starts for Quico_87:
(20, 50467), (Start: 25 @50488 has 211 MA's), (Start: 26 @50494 has 5 MA's), (Start: 28 @50500 has 1 MA's), (34, 50536),

Gene: Radiance_77 Start: 48660, Stop: 48854, Start Num: 25
Candidate Starts for Radiance_77:
(20, 48639), (Start: 25 @48660 has 211 MA's), (Start: 26 @48666 has 5 MA's), (Start: 28 @48672 has 1 MA's),

Gene: Ramsey_82 Start: 50142, Stop: 50336, Start Num: 25
Candidate Starts for Ramsey_82:
(20, 50121), (Start: 25 @50142 has 211 MA's), (Start: 26 @50148 has 5 MA's), (Start: 28 @50154 has 1 MA's),

Gene: RedBird_80 Start: 49900, Stop: 50094, Start Num: 25
Candidate Starts for RedBird_80:
(16, 49861), (Start: 23 @49888 has 1 MA's), (Start: 25 @49900 has 211 MA's), (Start: 26 @49906 has 5 MA's), (33, 49948), (38, 50020), (39, 50038),

Gene: Renaud18_87 Start: 48934, Stop: 49128, Start Num: 25
Candidate Starts for Renaud18_87:
(8, 48874), (Start: 25 @48934 has 211 MA's), (Start: 26 @48940 has 5 MA's), (33, 48982),

Gene: Rialto_85 Start: 49531, Stop: 49725, Start Num: 25
Candidate Starts for Rialto_85:
(22, 49519), (Start: 25 @49531 has 211 MA's), (Start: 26 @49537 has 5 MA's), (33, 49579),

Gene: Rita_84 Start: 50330, Stop: 50530, Start Num: 25
Candidate Starts for Rita_84:
(14, 50279), (Start: 24 @50318 has 1 MA's), (Start: 25 @50330 has 211 MA's), (Start: 26 @50336 has 5 MA's), (Start: 28 @50342 has 1 MA's), (33, 50378),

Gene: RitaG_79 Start: 49328, Stop: 49522, Start Num: 25
Candidate Starts for RitaG_79:
(16, 49289), (Start: 23 @49316 has 1 MA's), (Start: 25 @49328 has 211 MA's), (Start: 26 @49334 has 5 MA's), (33, 49376), (38, 49448), (39, 49466),

Gene: Rockne_77 Start: 46753, Stop: 46947, Start Num: 25
Candidate Starts for Rockne_77:
(Start: 25 @46753 has 211 MA's), (Start: 26 @46759 has 5 MA's), (Start: 28 @46765 has 1 MA's), (36, 46852), (37, 46864),

Gene: Royals2015_84 Start: 48180, Stop: 48374, Start Num: 25
Candidate Starts for Royals2015_84:
(8, 48120), (Start: 25 @48180 has 211 MA's), (Start: 26 @48186 has 5 MA's), (36, 48279), (37, 48291),

Gene: Ruby_72 Start: 48057, Stop: 48251, Start Num: 25
Candidate Starts for Ruby_72:
(7, 47964), (15, 48012), (18, 48018), (19, 48027), (Start: 25 @48057 has 211 MA's), (Start: 26 @48063 has 5 MA's), (Start: 28 @48069 has 1 MA's), (36, 48156), (37, 48168),

Gene: SG4_75 Start: 46923, Stop: 47117, Start Num: 25

Candidate Starts for SG4_75:

(20, 46902), (Start: 25 @46923 has 211 MA's), (Start: 26 @46929 has 5 MA's), (Start: 28 @46935 has 1 MA's), (37, 47034),

Gene: Saal_77 Start: 49033, Stop: 49227, Start Num: 25

Candidate Starts for Saal_77:

(Start: 25 @49033 has 211 MA's), (Start: 26 @49039 has 5 MA's), (Start: 28 @49045 has 1 MA's),

Gene: Sabbb_79 Start: 46001, Stop: 46195, Start Num: 25

Candidate Starts for Sabbb_79:

(16, 45962), (Start: 23 @45989 has 1 MA's), (Start: 25 @46001 has 211 MA's), (Start: 26 @46007 has 5 MA's), (Start: 28 @46013 has 1 MA's), (33, 46049),

Gene: Sandalphon_73 Start: 47802, Stop: 47996, Start Num: 25

Candidate Starts for Sandalphon_73:

(16, 47763), (Start: 23 @47790 has 1 MA's), (Start: 25 @47802 has 211 MA's), (Start: 26 @47808 has 5 MA's), (Start: 28 @47814 has 1 MA's), (36, 47901), (37, 47913),

Gene: Sarma624_76 Start: 44752, Stop: 44946, Start Num: 25

Candidate Starts for Sarma624_76:

(Start: 25 @44752 has 211 MA's), (Start: 26 @44758 has 5 MA's), (Start: 28 @44764 has 1 MA's), (36, 44851),

Gene: Sassafras_80 Start: 48217, Stop: 48411, Start Num: 25

Candidate Starts for Sassafras_80:

(16, 48178), (Start: 23 @48205 has 1 MA's), (Start: 25 @48217 has 211 MA's), (Start: 26 @48223 has 5 MA's), (33, 48265), (38, 48337), (39, 48355),

Gene: SassyB_68 Start: 44946, Stop: 45140, Start Num: 25

Candidate Starts for SassyB_68:

(Start: 25 @44946 has 211 MA's), (Start: 26 @44952 has 5 MA's), (Start: 28 @44958 has 1 MA's),

Gene: Scottish_77 Start: 47696, Stop: 47890, Start Num: 25

Candidate Starts for Scottish_77:

(10, 47645), (20, 47675), (Start: 25 @47696 has 211 MA's), (Start: 26 @47702 has 5 MA's), (34, 47744), (37, 47807),

Gene: SeaLumen_82 Start: 46190, Stop: 46384, Start Num: 25

Candidate Starts for SeaLumen_82:

(Start: 25 @46190 has 211 MA's), (Start: 26 @46196 has 5 MA's),

Gene: Seabastian_83 Start: 48470, Stop: 48664, Start Num: 25

Candidate Starts for Seabastian_83:

(Start: 25 @48470 has 211 MA's), (Start: 26 @48476 has 5 MA's), (Start: 28 @48482 has 1 MA's),

Gene: Seagreen_79 Start: 48958, Stop: 49152, Start Num: 25

Candidate Starts for Seagreen_79:

(8, 48901), (Start: 25 @48958 has 211 MA's), (Start: 26 @48964 has 5 MA's), (Start: 28 @48970 has 1 MA's), (37, 49069),

Gene: Shauna1_77 Start: 48330, Stop: 48518, Start Num: 26

Candidate Starts for Shauna1_77:

(20, 48303), (Start: 25 @48324 has 211 MA's), (Start: 26 @48330 has 5 MA's), (Start: 28 @48336 has 1 MA's), (37, 48435),

Gene: ShiLan_80 Start: 50778, Stop: 50978, Start Num: 25

Candidate Starts for ShiLan_80:

(20, 50757), (Start: 25 @50778 has 211 MA's), (Start: 26 @50784 has 5 MA's), (Start: 28 @50790 has 1 MA's), (39, 50916),

Gene: ShowerHandel_81 Start: 48533, Stop: 48733, Start Num: 25

Candidate Starts for ShowerHandel_81:

(Start: 24 @48521 has 1 MA's), (Start: 25 @48533 has 211 MA's), (Start: 26 @48539 has 5 MA's), (33, 48581), (39, 48671),

Gene: ShroomBoi_78 Start: 48199, Stop: 48393, Start Num: 25

Candidate Starts for ShroomBoi_78:

(7, 48106), (15, 48154), (18, 48160), (19, 48169), (Start: 25 @48199 has 211 MA's), (Start: 26 @48205 has 5 MA's), (Start: 28 @48211 has 1 MA's), (37, 48310),

Gene: SiSi_74 Start: 47154, Stop: 47348, Start Num: 25

Candidate Starts for SiSi_74:

(22, 47142), (Start: 25 @47154 has 211 MA's), (Start: 26 @47160 has 5 MA's), (Start: 28 @47166 has 1 MA's), (33, 47202),

Gene: SilverChicken_87 Start: 48135, Stop: 48329, Start Num: 25

Candidate Starts for SilverChicken_87:

(7, 48042), (15, 48090), (18, 48096), (19, 48105), (Start: 25 @48135 has 211 MA's), (Start: 26 @48141 has 5 MA's), (Start: 28 @48147 has 1 MA's), (36, 48234),

Gene: SimranZ1_78 Start: 47379, Stop: 47573, Start Num: 25

Candidate Starts for SimranZ1_78:

(7, 47286), (15, 47334), (18, 47340), (19, 47349), (Start: 25 @47379 has 211 MA's), (Start: 26 @47385 has 5 MA's), (Start: 28 @47391 has 1 MA's),

Gene: Slim_82 Start: 48344, Stop: 48544, Start Num: 25

Candidate Starts for Slim_82:

(14, 48293), (Start: 24 @48332 has 1 MA's), (Start: 25 @48344 has 211 MA's), (Start: 26 @48350 has 5 MA's), (Start: 28 @48356 has 1 MA's), (33, 48392), (38, 48464), (39, 48482),

Gene: Soul22_80 Start: 46482, Stop: 46676, Start Num: 25

Candidate Starts for Soul22_80:

(Start: 25 @46482 has 211 MA's), (Start: 26 @46488 has 5 MA's), (Start: 28 @46494 has 1 MA's),

Gene: Sparkdehlily_82 Start: 46721, Stop: 46921, Start Num: 25

Candidate Starts for Sparkdehlily_82:

(13, 46670), (21, 46700), (Start: 25 @46721 has 211 MA's), (Start: 26 @46727 has 5 MA's), (33, 46769), (39, 46859),

Gene: Spartacus_82 Start: 50350, Stop: 50550, Start Num: 25

Candidate Starts for Spartacus_82:

(Start: 24 @50338 has 1 MA's), (Start: 25 @50350 has 211 MA's), (Start: 26 @50356 has 5 MA's), (33, 50398), (38, 50470), (39, 50488),

Gene: Spikelee_84 Start: 50288, Stop: 50488, Start Num: 25

Candidate Starts for Spikelee_84:

(18, 50249), (Start: 24 @50276 has 1 MA's), (Start: 25 @50288 has 211 MA's), (Start: 26 @50294 has 5 MA's), (Start: 28 @50300 has 1 MA's), (38, 50408),

Gene: Spoonbill_75 Start: 46325, Stop: 46519, Start Num: 25

Candidate Starts for Spoonbill_75:

(Start: 25 @46325 has 211 MA's), (Start: 26 @46331 has 5 MA's), (Start: 28 @46337 has 1 MA's), (37, 46436),

Gene: Squirty_79 Start: 51431, Stop: 51625, Start Num: 25

Candidate Starts for Squirty_79:

(16, 51392), (Start: 23 @51419 has 1 MA's), (Start: 25 @51431 has 211 MA's), (Start: 26 @51437 has 5 MA's), (Start: 28 @51443 has 1 MA's), (33, 51479), (37, 51542),

Gene: StAnnes_80 Start: 49402, Stop: 49581, Start Num: 29

Candidate Starts for StAnnes_80:

(1, 49117), (3, 49177), (Start: 29 @49402 has 8 MA's),

Gene: Stap_72 Start: 45362, Stop: 45556, Start Num: 25

Candidate Starts for Stap_72:

(16, 45323), (Start: 23 @45350 has 1 MA's), (Start: 25 @45362 has 211 MA's), (Start: 26 @45368 has 5 MA's), (Start: 28 @45374 has 1 MA's), (33, 45410), (37, 45473),

Gene: Starcevich_78 Start: 49205, Stop: 49399, Start Num: 25

Candidate Starts for Starcevich_78:

(8, 49148), (Start: 25 @49205 has 211 MA's), (Start: 26 @49211 has 5 MA's), (Start: 28 @49217 has 1 MA's),

Gene: Strokeseat_73 Start: 45615, Stop: 45809, Start Num: 25

Candidate Starts for Strokeseat_73:

(20, 45594), (Start: 25 @45615 has 211 MA's), (Start: 26 @45621 has 5 MA's), (Start: 28 @45627 has 1 MA's), (37, 45726),

Gene: SuperGrey_78 Start: 50054, Stop: 50248, Start Num: 25

Candidate Starts for SuperGrey_78:

(8, 49994), (Start: 25 @50054 has 211 MA's), (Start: 26 @50060 has 5 MA's), (33, 50102),

Gene: SwagPigglett_81 Start: 50169, Stop: 50363, Start Num: 25

Candidate Starts for SwagPigglett_81:

(16, 50130), (Start: 23 @50157 has 1 MA's), (Start: 25 @50169 has 211 MA's), (Start: 26 @50175 has 5 MA's), (Start: 28 @50181 has 1 MA's), (33, 50217),

Gene: TChen_79 Start: 49586, Stop: 49780, Start Num: 25

Candidate Starts for TChen_79:

(Start: 25 @49586 has 211 MA's), (Start: 26 @49592 has 5 MA's), (33, 49634),

Gene: TDanisky_83 Start: 46721, Stop: 46921, Start Num: 25

Candidate Starts for TDanisky_83:

(13, 46670), (21, 46700), (Start: 25 @46721 has 211 MA's), (Start: 26 @46727 has 5 MA's), (33, 46769), (39, 46859),

Gene: Taj_84 Start: 49766, Stop: 49960, Start Num: 25

Candidate Starts for Taj_84:

(8, 49709), (Start: 25 @49766 has 211 MA's), (Start: 26 @49772 has 5 MA's), (Start: 28 @49778 has 1 MA's), (37, 49877),

Gene: Tchotchke_72 Start: 46667, Stop: 46861, Start Num: 25

Candidate Starts for Tchotchke_72:

(20, 46646), (Start: 25 @46667 has 211 MA's), (Start: 26 @46673 has 5 MA's), (Start: 28 @46679 has 1 MA's), (36, 46766), (37, 46778),

Gene: ThetaBob_80 Start: 47770, Stop: 47964, Start Num: 25

Candidate Starts for ThetaBob_80:

(Start: 25 @47770 has 211 MA's), (Start: 26 @47776 has 5 MA's), (Start: 28 @47782 has 1 MA's),

Gene: Tootsieroll_76 Start: 49177, Stop: 49371, Start Num: 25

Candidate Starts for Tootsieroll_76:

(10, 49126), (20, 49156), (Start: 25 @49177 has 211 MA's), (Start: 26 @49183 has 5 MA's), (34, 49225),

Gene: Topiatin_82 Start: 48744, Stop: 48977, Start Num: 18

Candidate Starts for Topiatin_82:

(7, 48690), (15, 48738), (18, 48744), (19, 48753), (Start: 25 @48783 has 211 MA's), (Start: 26 @48789 has 5 MA's), (Start: 28 @48795 has 1 MA's), (38, 48903), (39, 48921),

Gene: Totinger_80 Start: 48016, Stop: 48195, Start Num: 29

Candidate Starts for Totinger_80:

(Start: 29 @48016 has 8 MA's),

Gene: Tweety_78 Start: 48767, Stop: 48961, Start Num: 25

Candidate Starts for Tweety_78:

(5, 48674), (10, 48716), (22, 48755), (Start: 25 @48767 has 211 MA's), (Start: 26 @48773 has 5 MA's), (Start: 28 @48779 has 1 MA's), (36, 48866), (37, 48878),

Gene: UncleRicky_75 Start: 46633, Stop: 46821, Start Num: 26

Candidate Starts for UncleRicky_75:

(10, 46576), (20, 46606), (Start: 25 @46627 has 211 MA's), (Start: 26 @46633 has 5 MA's), (34, 46675),

Gene: VRedHorse_78 Start: 45879, Stop: 46079, Start Num: 25

Candidate Starts for VRedHorse_78:

(20, 45858), (Start: 25 @45879 has 211 MA's), (Start: 26 @45885 has 5 MA's), (Start: 28 @45891 has 1 MA's),

Gene: Velveteen_72 Start: 44752, Stop: 44946, Start Num: 25

Candidate Starts for Velveteen_72:

(Start: 25 @44752 has 211 MA's), (Start: 26 @44758 has 5 MA's), (Start: 28 @44764 has 1 MA's), (36, 44851),

Gene: Veteran_70 Start: 47022, Stop: 47216, Start Num: 25

Candidate Starts for Veteran_70:

(8, 46965), (Start: 25 @47022 has 211 MA's), (Start: 26 @47028 has 5 MA's), (Start: 28 @47034 has 1 MA's), (37, 47133),

Gene: Violac_79 Start: 49266, Stop: 49460, Start Num: 25

Candidate Starts for Violac_79:

(11, 49215), (Start: 23 @49254 has 1 MA's), (Start: 25 @49266 has 211 MA's), (Start: 26 @49272 has 5 MA's), (Start: 28 @49278 has 1 MA's), (33, 49314),

Gene: Vivum_78 Start: 49891, Stop: 50085, Start Num: 25

Candidate Starts for Vivum_78:

(8, 49834), (Start: 25 @49891 has 211 MA's), (Start: 26 @49897 has 5 MA's), (Start: 28 @49903 has 1 MA's), (37, 50002),

Gene: Wachhund_77 Start: 45808, Stop: 46002, Start Num: 25

Candidate Starts for Wachhund_77:

(Start: 25 @45808 has 211 MA's), (Start: 26 @45814 has 5 MA's), (36, 45907),

Gene: Wee_83 Start: 49842, Stop: 50036, Start Num: 25

Candidate Starts for Wee_83:

(8, 49785), (Start: 25 @49842 has 211 MA's), (Start: 26 @49848 has 5 MA's), (Start: 28 @49854 has 1 MA's), (37, 49953),

Gene: Whatsapiecost_72 Start: 43662, Stop: 43856, Start Num: 25

Candidate Starts for Whatsapiecost_72:

(20, 43641), (Start: 25 @43662 has 211 MA's), (Start: 26 @43668 has 5 MA's), (Start: 28 @43674 has 1 MA's), (37, 43773),

Gene: Whouxphf_74 Start: 47939, Stop: 48133, Start Num: 25

Candidate Starts for Whouxphf_74:

(11, 47888), (Start: 23 @47927 has 1 MA's), (Start: 25 @47939 has 211 MA's), (Start: 26 @47945 has 5 MA's), (Start: 28 @47951 has 1 MA's), (33, 47987),

Gene: XFactor_73 Start: 47232, Stop: 47426, Start Num: 25

Candidate Starts for XFactor_73:

(11, 47181), (Start: 23 @47220 has 1 MA's), (Start: 25 @47232 has 211 MA's), (Start: 26 @47238 has 5 MA's), (Start: 28 @47244 has 1 MA's), (33, 47280),

Gene: Yoshi_91 Start: 49208, Stop: 49408, Start Num: 25

Candidate Starts for Yoshi_91:

(17, 49169), (Start: 24 @49196 has 1 MA's), (Start: 25 @49208 has 211 MA's), (Start: 26 @49214 has 5 MA's), (33, 49256), (38, 49328), (39, 49346),

Gene: Zapner_86 Start: 46812, Stop: 47006, Start Num: 25

Candidate Starts for Zapner_86:

(8, 46755), (Start: 25 @46812 has 211 MA's), (Start: 26 @46818 has 5 MA's), (Start: 28 @46824 has 1 MA's),

Gene: Zerg_76 Start: 47879, Stop: 48073, Start Num: 25

Candidate Starts for Zerg_76:

(8, 47819), (Start: 25 @47879 has 211 MA's), (Start: 26 @47885 has 5 MA's), (33, 47927),

Gene: Zizzle_85 Start: 50965, Stop: 51150, Start Num: 29

Candidate Starts for Zizzle_85:

(Start: 26 @50956 has 5 MA's), (Start: 29 @50965 has 8 MA's), (39, 51088),