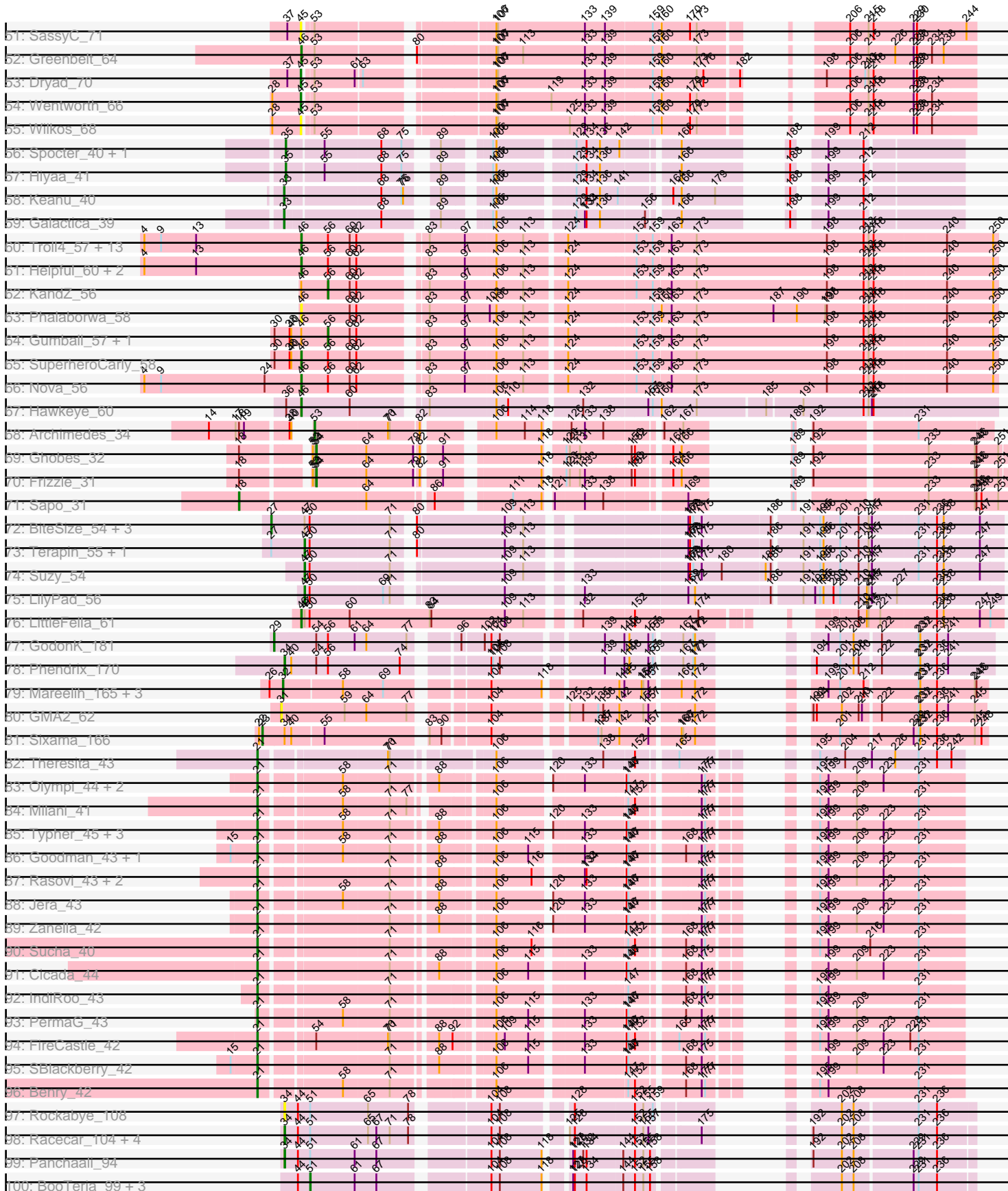
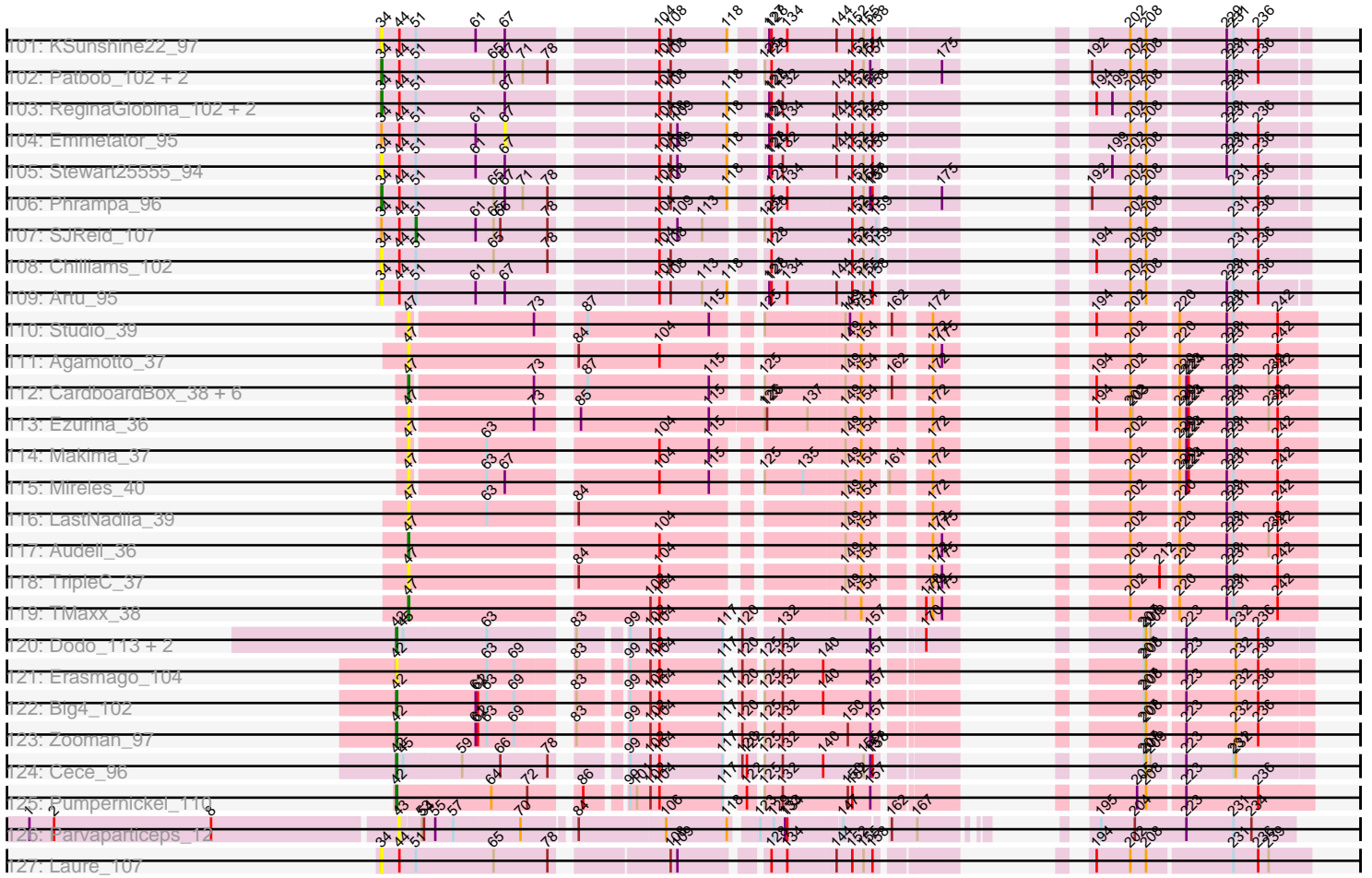


Pham 294410



Pham 294410



Note: Tracks are now grouped by subcluster and scaled. Switching in subcluster is indicated by changes in track color. Track scale is now set by default to display the region 30 bp upstream of start 1 to 30 bp downstream of the last possible start. If this default region is judged to be packed too tightly with annotated starts, the track will be further scaled to only show that region of the ORF with annotated starts. This action will be indicated by adding "Zoomed" to the title. For starts, yellow indicates the location of called starts comprised solely of Glimmer/GeneMark auto-annotations, green indicates the location of called starts with at least 1 manual gene annotation.

Pham 294410 Report

This analysis was run 04/18/26 on database version 643.

Pham number 294410 has 233 members, 41 are drafts.

Phages represented in each track:

- Track 1 : Graynor_44
- Track 2 : Jumboset_42, MrGloopy_42, Glenn_42, Savage2526_42
- Track 3 : Lennox_39, WonderBoy_38, PitaDog_39, Lucy_39, Makoto_39
- Track 4 : Maria1952_38, Daiboju_39, Temper16_39, Herb_39, Sergei_39, KingBob_39
- Track 5 : CristinaYang_39, ChewChew_39, LilStuart_39
- Track 6 : Huckleberry_39, Moki_39, Bennie_39
- Track 7 : HeadNerd_39
- Track 8 : Huntingdon_41, RcigaStruga_41
- Track 9 : Lasagna_38, Pterodactyl_39, OurGirlNessie_38
- Track 10 : AustinPowers_39, Supakev_39, Eunoia_39, Riovina_39, Aledel_39, OMalley_39
- Track 11 : TattModd_40
- Track 12 : Riverdale_42, Beethoven_41, Vallejo_42, Immaculata_41, Potatoes_41, BrotherBLo_41, Kalizoi_41, Carpal_41, Cholula_41, Rozby_41
- Track 13 : DrRobert_38
- Track 14 : DreamTeam_39, Gisselle_39
- Track 15 : MamaPearl_40, EstebanJulior_40
- Track 16 : Wawa_41, Korra_41
- Track 17 : Preamble_39
- Track 18 : Chridison_38
- Track 19 : Bodacious_39, Nancia_39
- Track 20 : Misaeng_41
- Track 21 : Vulture_39, HunterDalle_39
- Track 22 : CallieOMalley_41, AppleCider_41, Wayne_41, Canowicakte_41, Suppi_41, MrBoss_43, PartyCup_42
- Track 23 : Scuttle_41
- Track 24 : Nubia_42, Oxynfrius_42, Greenhouse_43, Lakshmi_42
- Track 25 : Albanese_42
- Track 26 : MeganNoll_41, Dino_42, RAP15_42, Zorro_42
- Track 27 : Urla_40
- Track 28 : Pumancara_39
- Track 29 : BigMack_39
- Track 30 : Joann_42
- Track 31 : Kittykat_40
- Track 32 : GreenHearts_42
- Track 33 : Litotes_41

- Track 34 : Fluke_42
- Track 35 : PinkFriday_39
- Track 36 : Christian_39
- Track 37 : Henoccus_51
- Track 38 : JackieB_51
- Track 39 : Shynx_50, Intolerant_48
- Track 40 : LazerLemon_51
- Track 41 : Bogota_51
- Track 42 : Araceli_50
- Track 43 : Microdon_49
- Track 44 : Crosby_51
- Track 45 : UNTPL_52
- Track 46 : Stuff_50
- Track 47 : Marky_53
- Track 48 : Rooney_66, Gibson_66, Virizion_71
- Track 49 : Yara_62
- Track 50 : PHTowN_66, Lizz_66, ShakeNBake_66
- Track 51 : SassyC_71
- Track 52 : Greenbelt_64
- Track 53 : Dryad_70
- Track 54 : Wentworth_66
- Track 55 : Wilkos_68
- Track 56 : Spocter_40, Kokushibo_42
- Track 57 : Hiyaa_41
- Track 58 : Keanu_40
- Track 59 : Galactica_39
- Track 60 : Troll4_57, BigMama_55, Mopey_58, Chill_59, Giuseppe_58, Visconti_58, Erk16_56, Butterscotch_56, PBI1_54, Thoth_57, Adjutor_56, Delton_58, WaldoWhy_59, Prager_57
- Track 61 : Helpful_60, Penelope2018_57, PLOT_57
- Track 62 : KandZ_56
- Track 63 : Phalaborwa_58
- Track 64 : Gumball_57, SirHarley_59
- Track 65 : SuperheroCarly_58
- Track 66 : Nova_56
- Track 67 : Hawkeye_60
- Track 68 : Archimedes_34
- Track 69 : Ghobes_32
- Track 70 : Frizzle_31
- Track 71 : Sapo_31
- Track 72 : BiteSize_54, Beyoncage_54, Sienna_54, Madi_54
- Track 73 : Terapin_55, Djokovic_54
- Track 74 : Suzy_54
- Track 75 : LilyPad_56
- Track 76 : LittleFella_61
- Track 77 : GodonK_181
- Track 78 : Phendrix_170
- Track 79 : Mareelih_165, Forza_168, Boopy_167, BlueNGold_164
- Track 80 : GMA2_62
- Track 81 : Sixama_166
- Track 82 : Theresita_43
- Track 83 : Olympi_44, Rootkit7_42, Alove_42
- Track 84 : Milani_41

- Track 85 : Typher_45, AyoTeo_44, Labella_45, TurboVicky_43
- Track 86 : Goodman_43, Johann_43
- Track 87 : Rasovi_43, Linayshia_43, Htur_43
- Track 88 : Jera_43
- Track 89 : Zanella_42
- Track 90 : Sucha_40
- Track 91 : Cicada_44
- Track 92 : IndiRoo_43
- Track 93 : PermaG_43
- Track 94 : FireCastle_42
- Track 95 : SBlackberry_42
- Track 96 : Benry_42
- Track 97 : Rockabye_108
- Track 98 : Racecar_104, Bloom_107, Mimi_103, Talia1610_103, FrostedClock_106
- Track 99 : Panchaali_94
- Track 100 : BooTeria_99, WaddleDee_90, DunneganBoMo_92, Ellewin_91
- Track 101 : KSunshine22_97
- Track 102 : Patbob_102, FloraSnap32_103, GoldenEssence_89
- Track 103 : ReginaGlobina_102, Atuin_97, LeoJr_102
- Track 104 : Emmetator_95
- Track 105 : Stewart25555_94
- Track 106 : Phrampa_96
- Track 107 : SJReid_107
- Track 108 : Chilliams_102
- Track 109 : Artu_95
- Track 110 : Studio_39
- Track 111 : Agamoto_37
- Track 112 : CardboardBox_38, Gerri43_38, ChamoyPickle_39, Roberts_37, AnnabelLee_37, ChipsNGuac_38, Neuvillette_37
- Track 113 : Ezurina_36
- Track 114 : Makima_37
- Track 115 : Mireles_40
- Track 116 : LastNadiia_39
- Track 117 : Audell_36
- Track 118 : TripleC_37
- Track 119 : TMaxx_38
- Track 120 : Dodo_113, PauloDiaboli_113, A3Wally_113
- Track 121 : Erasmago_104
- Track 122 : Big4_102
- Track 123 : Zooman_97
- Track 124 : Cece_96
- Track 125 : Pumpnickel_110
- Track 126 : Parvarticeps_12
- Track 127 : Laure_107

Summary of Final Annotations (See graph section above for start numbers):

The start number called the most often in the published annotations is 46, it was called in 89 of the 192 non-draft genes in the pham.

Genes that call this "Most Annotated" start:

- Adjutor_56, Albanese_42, AppleCider_41, Beethoven_41, Bennie_39, BigMack_39, BigMama_55, Bodacious_39, BrotherBLo_41, Butterscotch_56, CallieOMalley_41, Canowicakte_41, Carpal_41, ChewChew_39, Chill_59, Cholula_41, Christian_39, CristinaYang_39, Delton_58, Dino_42, DrRobert_38, DreamTeam_39, Erk16_56, EstebanJulior_40, Fluke_42, Gisselle_39, Giuseppe_58, Glenn_42, Graynor_44, GreenHearts_42, Greenbelt_64, Greenhouse_43, Hawkeye_60, HeadNerd_39, Helpful_60, Huckleberry_39, Huntingdon_41, Immaculata_41, Joann_42, Jumboset_42, Kalizoi_41, Kittykat_40, Korra_41, Lakshmi_42, Lasagna_38, Lennox_39, LilStuart_39, Litotes_41, LittleFella_61, Lucy_39, Makoto_39, MamaPearl_40, MeganNoll_41, Misaeng_41, Moki_39, Mopey_58, MrBoss_43, MrGloopy_42, Nancia_39, Nova_56, Nubia_42, OurGirlNessie_38, Oxynfrius_42, PBI1_54, PLOT_57, PartyCup_42, Penelope2018_57, Phalaborwa_58, PitaDog_39, Potatoes_41, Prager_57, Preamble_39, Pterodactyl_39, RAP15_42, RcigaStruga_41, Riverdale_42, Rozby_41, Savage2526_42, Scuttle_41, SuperheroCarly_58, Suppi_41, TattModd_40, Thoth_57, Troll4_57, Urla_40, Vallejo_42, Visconti_58, WaldoWhy_59, Wawa_41, Wayne_41, WonderBoy_38, Zorro_42,

Genes that have the "Most Annotated" start but do not call it:

- Gumball_57, KandZ_56, SirHarley_59,

Genes that do not have the "Most Annotated" start:

- A3Wally_113, Agamoto_37, Aledel_39, Alove_42, AnnabelLee_37, Araceli_50, Archimedes_34, Artu_95, Atuin_97, Audell_36, AustinPowers_39, AyoTeo_44, Benry_42, Beyoncage_54, Big4_102, BiteSize_54, Bloom_107, BlueNGold_164, Bogota_51, BooTeria_99, Boopy_167, CardboardBox_38, Cece_96, ChamoyPickle_39, Chilliams_102, ChipsNGuac_38, Chridison_38, Cicada_44, Crosby_51, Daiboju_39, Djokovic_54, Dodo_113, Dryad_70, DunneganBoMo_92, Ellewin_91, Emmetator_95, Erasmago_104, Eunoia_39, Ezurina_36, FireCastle_42, FloraSnap32_103, Forza_168, Frizzle_31, FrostedClock_106, GMA2_62, Galactica_39, Gerri43_38, Ghobes_32, Gibson_66, GodonK_181, GoldenEssence_89, Goodman_43, Henoccus_51, Herb_39, Hiyaa_41, Htur_43, HunterDalle_39, IndiRoo_43, Intolerant_48, JackieB_51, Jera_43, Johann_43, KSunshine22_97, Keanu_40, KingBob_39, Kokushibo_42, Labella_45, LastNadiia_39, Laure_107, LazerLemon_51, LeoJr_102, LilyPad_56, Linayshia_43, Lizz_66, Madi_54, Makima_37, Mareelih_165, Maria1952_38, Marky_53, Microdon_49, Milani_41, Mimi_103, Mireles_40, Neuville_37, OMalley_39, Olympi_44, PHTowN_66, Panchaali_94, Parvaparticeps_12, Patbob_102, PauloDiaboli_113, PermaG_43, Phendrix_170, Phrampa_96, PinkFriday_39, Pumancara_39, Pumpnickel_110, Racecar_104, Rasovi_43, ReginaGlobina_102, Rivovina_39, Roberts_37, Rockabye_108, Rooney_66, Rootkit7_42, SBlackberry_42, SJReid_107, Sapo_31, SassyC_71, Sergei_39, ShakeNBake_66, Shynx_50, Sienna_54, Sixama_166, Spocter_40, Stewart25555_94, Studio_39, Stuff_50, Sucha_40, Supakev_39, Suzy_54, TMaxx_38, Talia1610_103, Temper16_39, Terapin_55, Theresita_43, TripleC_37, TurboVicky_43, Typher_45, UNTPL_52, Virizion_71, Vulture_39, WaddleDee_90, Wentworth_66, Wilkos_68, Yara_62, Zanella_42, Zooman_97,

Summary by start number:

Start 18:

- Found in 4 of 233 (1.7%) of genes in pham
- Manual Annotations of this start: 1 of 192

- Called 25.0% of time when present
- Phage (with cluster) where this start called: Sapo_31 (DA),

Start 21:

- Found in 23 of 233 (9.9%) of genes in pham
- Manual Annotations of this start: 19 of 192
- Called 100.0% of time when present
- Phage (with cluster) where this start called: Alove_42 (EJ), AyoTeo_44 (EJ), Benry_42 (EJ), Cicada_44 (EJ), FireCastle_42 (EJ), Goodman_43 (EJ), Htur_43 (EJ), IndiRoo_43 (EJ), Jera_43 (EJ), Johann_43 (EJ), Labella_45 (EJ), Linayshia_43 (EJ), Milani_41 (EJ), Olympi_44 (EJ), PermaG_43 (EJ), Rasovi_43 (EJ), Rootkit7_42 (EJ), SBlackberry_42 (EJ), Sucha_40 (EJ), Theresita_43 (EA7), TurboVicky_43 (EJ), Typher_45 (EJ), Zanella_42 (EJ),

Start 23:

- Found in 1 of 233 (0.4%) of genes in pham
- Manual Annotations of this start: 1 of 192
- Called 100.0% of time when present
- Phage (with cluster) where this start called: Sixama_166 (DS),

Start 27:

- Found in 6 of 233 (2.6%) of genes in pham
- Manual Annotations of this start: 4 of 192
- Called 66.7% of time when present
- Phage (with cluster) where this start called: Beyoncage_54 (DG1), BiteSize_54 (DG1), Madi_54 (DG1), Sienna_54 (DG1),

Start 29:

- Found in 1 of 233 (0.4%) of genes in pham
- Manual Annotations of this start: 1 of 192
- Called 100.0% of time when present
- Phage (with cluster) where this start called: GodonK_181 (DK),

Start 31:

- Found in 1 of 233 (0.4%) of genes in pham
- No Manual Annotations of this start.
- Called 100.0% of time when present
- Phage (with cluster) where this start called: GMA2_62 (DS),

Start 32:

- Found in 4 of 233 (1.7%) of genes in pham
- Manual Annotations of this start: 4 of 192
- Called 100.0% of time when present
- Phage (with cluster) where this start called: BlueNGold_164 (DS), Boopy_167 (DS), Forza_168 (DS), Mareelih_165 (DS),

Start 33:

- Found in 2 of 233 (0.9%) of genes in pham
- Manual Annotations of this start: 2 of 192
- Called 100.0% of time when present
- Phage (with cluster) where this start called: Galactica_39 (BQ), Keanu_40 (BQ),

Start 34:

- Found in 23 of 233 (9.9%) of genes in pham
- Manual Annotations of this start: 9 of 192
- Called 87.0% of time when present
- Phage (with cluster) where this start called: Artu_95 (FC), Atuin_97 (FC), Bloom_107 (FC), Chilliams_102 (FC), FloraSnap32_103 (FC), FrostedClock_106 (FC), GoldenEssence_89 (FC), KSunshine22_97 (FC), Laure_107 (UNK), LeoJr_102 (FC), Mimi_103 (FC), Panchaali_94 (FC), Patbob_102 (FC), Phendrix_170 (DK), Phrampa_96 (FC), Racecar_104 (FC), ReginaGlobina_102 (FC), Rockabye_108 (FC), Stewart25555_94 (FC), Talia1610_103 (FC),

Start 35:

- Found in 3 of 233 (1.3%) of genes in pham
- Manual Annotations of this start: 2 of 192
- Called 100.0% of time when present
- Phage (with cluster) where this start called: Hiyaa_41 (BQ), Kokushibo_42 (BQ), Spocter_40 (BQ),

Start 39:

- Found in 5 of 233 (2.1%) of genes in pham
- Manual Annotations of this start: 1 of 192
- Called 20.0% of time when present
- Phage (with cluster) where this start called: UNTPL_52 (BH),

Start 41:

- Found in 12 of 233 (5.2%) of genes in pham
- Manual Annotations of this start: 11 of 192
- Called 91.7% of time when present
- Phage (with cluster) where this start called: Araceli_50 (BH), Bogota_51 (BH), Crosby_51 (BH), Henoccus_51 (BH), Intolerant_48 (BH), JackieB_51 (BH), LazerLemon_51 (BH), Marky_53 (BH), Microdon_49 (BH), Shynx_50 (BH), Stuff_50 (BH),

Start 42:

- Found in 8 of 233 (3.4%) of genes in pham
- Manual Annotations of this start: 6 of 192
- Called 100.0% of time when present
- Phage (with cluster) where this start called: A3Wally_113 (GD1), Big4_102 (GD2), Cece_96 (GD3), Dodo_113 (GD1), Erasmago_104 (GD2), PauloDiaboli_113 (GD1), Pumpnickel_110 (GD4), Zooman_97 (GD2),

Start 43:

- Found in 1 of 233 (0.4%) of genes in pham
- No Manual Annotations of this start.
- Called 100.0% of time when present
- Phage (with cluster) where this start called: Parvaparticeps_12 (UNK),

Start 45:

- Found in 14 of 233 (6.0%) of genes in pham
- Manual Annotations of this start: 7 of 192
- Called 71.4% of time when present
- Phage (with cluster) where this start called: Dryad_70 (BN), Gibson_66 (BN), Lizz_66 (BN), PHTowN_66 (BN), Rooney_66 (BN), SassyC_71 (BN), ShakeNBake_66 (BN), Virizion_71 (BN), Wentworth_66 (BN), Wilkos_68 (BN),

Start 46:

- Found in 95 of 233 (40.8%) of genes in pham
- Manual Annotations of this start: 89 of 192
- Called 96.8% of time when present
- Phage (with cluster) where this start called: Adjutor_56 (D1), Albanese_42 (AK), AppleCider_41 (AK), Beethoven_41 (AK), Bennie_39 (AK), BigMack_39 (AK), BigMama_55 (D1), Bodacious_39 (AK), BrotherBLo_41 (AK), Butterscotch_56 (D1), CallieOMalley_41 (AK), Canowicakte_41 (AK), Carpal_41 (AK), ChewChew_39 (AK), Chill_59 (D1), Cholula_41 (AK), Christian_39 (AK), CristinaYang_39 (AK), Delton_58 (D1), Dino_42 (AK), DrRobert_38 (AK), DreamTeam_39 (AK), Erk16_56 (D1), EstebanJulior_40 (AK), Fluke_42 (AK), Gisselle_39 (AK), Giuseppe_58 (D1), Glenn_42 (AK), Graynor_44 (AK), GreenHearts_42 (AK), Greenbelt_64 (BN), Greenhouse_43 (AK), Hawkeye_60 (D2), HeadNerd_39 (AK), Helpful_60 (D1), Huckleberry_39 (AK), Huntingdon_41 (AK), Immaculata_41 (AK), Joann_42 (AK), Jumboset_42 (AK), Kalizoi_41 (AK), Kittykat_40 (AK), Korra_41 (AK), Lakshmi_42 (AK), Lasagna_38 (AK), Lennox_39 (AK), LilStuart_39 (AK), Litotes_41 (AK), LittleFella_61 (DG2), Lucy_39 (AK), Makoto_39 (AK), MamaPearl_40 (AK), MeganNoll_41 (AK), Misaeng_41 (AK), Moki_39 (AK), Mopey_58 (D1), MrBoss_43 (AK), MrGloopy_42 (AK), Nancia_39 (AK), Nova_56 (D1), Nubia_42 (AK), OurGirlNessie_38 (AK), Oxynfrius_42 (AK), PBI1_54 (D1), PLOT_57 (D1), PartyCup_42 (AK), Penelope2018_57 (D1), Phalaborwa_58 (D1), PitaDog_39 (AK), Potatoes_41 (AK), Prager_57 (D1), Preamble_39 (AK), Pterodactyl_39 (AK), RAP15_42 (AK), RcigaStruga_41 (AK), Riverdale_42 (AK), Rozby_41 (AK), Savage2526_42 (AK), Scuttle_41 (AK), SuperheroCarly_58 (D1), Suppi_41 (AK), TattModd_40 (AK), Thoth_57 (D1), Troll4_57 (D1), Urla_40 (AK), Vallejo_42 (AK), Visconti_58 (D1), WaldoWhy_59 (D1), Wawa_41 (AK), Wayne_41 (AK), WonderBoy_38 (AK), Zorro_42 (AK),

Start 47:

- Found in 25 of 233 (10.7%) of genes in pham
- Manual Annotations of this start: 7 of 192
- Called 80.0% of time when present
- Phage (with cluster) where this start called: Agamoto_37 (FR), AnnabelleLee_37 (FR), Audell_36 (FR), CardboardBox_38 (FR), ChamoyPickle_39 (FR), ChipsNGuac_38 (FR), Djokovic_54 (DG1), Ezurina_36 (FR), Gerri43_38 (FR), LastNadiia_39 (FR), LilyPad_56 (DG1), Makima_37 (FR), Mireles_40 (FR), Neuville_37 (FR), Roberts_37 (FR), Studio_39 (FR), Suzy_54 (DG1), TMaxx_38 (FR), Terapin_55 (DG1), TripleC_37 (FR),

Start 48:

- Found in 17 of 233 (7.3%) of genes in pham
- Manual Annotations of this start: 17 of 192
- Called 100.0% of time when present
- Phage (with cluster) where this start called: Aledel_39 (AK), AustinPowers_39 (AK), Chridison_38 (AK), Daiboju_39 (AK), Eunoia_39 (AK), Herb_39 (AK), HunterDalle_39 (AK), KingBob_39 (AK), Maria1952_38 (AK), OMalley_39 (AK), PinkFriday_39 (AK), Pumancara_39 (AK), Riovina_39 (AK), Sergei_39 (AK), Supakev_39 (AK), Temper16_39 (AK), Vulture_39 (AK),

Start 49:

- Found in 1 of 233 (0.4%) of genes in pham
- Manual Annotations of this start: 1 of 192

- Called 100.0% of time when present
- Phage (with cluster) where this start called: Yara_62 (BN),

Start 51:

- Found in 25 of 233 (10.7%) of genes in pham
- Manual Annotations of this start: 4 of 192
- Called 20.0% of time when present
- Phage (with cluster) where this start called: BooTeria_99 (FC), DunneganBoMo_92 (FC), Ellewin_91 (FC), SJReid_107 (FC), WaddleDee_90 (FC),

Start 53:

- Found in 16 of 233 (6.9%) of genes in pham
- Manual Annotations of this start: 1 of 192
- Called 6.2% of time when present
- Phage (with cluster) where this start called: Archimedes_34 (DA),

Start 54:

- Found in 6 of 233 (2.6%) of genes in pham
- Manual Annotations of this start: 2 of 192
- Called 33.3% of time when present
- Phage (with cluster) where this start called: Frizzle_31 (DA), Ghobes_32 (DA),

Start 56:

- Found in 24 of 233 (10.3%) of genes in pham
- Manual Annotations of this start: 3 of 192
- Called 12.5% of time when present
- Phage (with cluster) where this start called: Gumball_57 (D1), KandZ_56 (D1), SirHarley_59 (D1),

Start 67:

- Found in 22 of 233 (9.4%) of genes in pham
- No Manual Annotations of this start.
- Called 4.5% of time when present
- Phage (with cluster) where this start called: Emmetator_95 (FC),

Summary by clusters:

There are 20 clusters represented in this pham: GD1, FR, GD3, GD4, DK, EJ, DS, AK, BH, GD2, DA, DG2, FC, BQ, DG1, UNK, D2, BN, EA7, D1,

Info for manual annotations of cluster AK:

- Start number 46 was manually annotated 67 times for cluster AK.
- Start number 48 was manually annotated 17 times for cluster AK.

Info for manual annotations of cluster BH:

- Start number 39 was manually annotated 1 time for cluster BH.
- Start number 41 was manually annotated 11 times for cluster BH.

Info for manual annotations of cluster BN:

- Start number 45 was manually annotated 7 times for cluster BN.
- Start number 46 was manually annotated 1 time for cluster BN.
- Start number 49 was manually annotated 1 time for cluster BN.

Info for manual annotations of cluster BQ:

- Start number 33 was manually annotated 2 times for cluster BQ.
- Start number 35 was manually annotated 2 times for cluster BQ.

Info for manual annotations of cluster D1:

- Start number 46 was manually annotated 19 times for cluster D1.
- Start number 56 was manually annotated 3 times for cluster D1.

Info for manual annotations of cluster D2:

- Start number 46 was manually annotated 1 time for cluster D2.

Info for manual annotations of cluster DA:

- Start number 18 was manually annotated 1 time for cluster DA.
- Start number 53 was manually annotated 1 time for cluster DA.
- Start number 54 was manually annotated 2 times for cluster DA.

Info for manual annotations of cluster DG1:

- Start number 27 was manually annotated 4 times for cluster DG1.
- Start number 47 was manually annotated 4 times for cluster DG1.

Info for manual annotations of cluster DG2:

- Start number 46 was manually annotated 1 time for cluster DG2.

Info for manual annotations of cluster DK:

- Start number 29 was manually annotated 1 time for cluster DK.
- Start number 34 was manually annotated 1 time for cluster DK.

Info for manual annotations of cluster DS:

- Start number 23 was manually annotated 1 time for cluster DS.
- Start number 32 was manually annotated 4 times for cluster DS.

Info for manual annotations of cluster EA7:

- Start number 21 was manually annotated 1 time for cluster EA7.

Info for manual annotations of cluster EJ:

- Start number 21 was manually annotated 18 times for cluster EJ.

Info for manual annotations of cluster FC:

- Start number 34 was manually annotated 8 times for cluster FC.
- Start number 51 was manually annotated 4 times for cluster FC.

Info for manual annotations of cluster FR:

- Start number 47 was manually annotated 3 times for cluster FR.

Info for manual annotations of cluster GD1:

- Start number 42 was manually annotated 2 times for cluster GD1.

Info for manual annotations of cluster GD2:

- Start number 42 was manually annotated 2 times for cluster GD2.

Info for manual annotations of cluster GD3:

- Start number 42 was manually annotated 1 time for cluster GD3.

Info for manual annotations of cluster GD4:

•Start number 42 was manually annotated 1 time for cluster GD4.

Gene Information:

Gene: A3Wally_113 Start: 77350, Stop: 76415, Start Num: 42

Candidate Starts for A3Wally_113:

(Start: 42 @77350 has 6 MA's), (Start: 45 @77341 has 7 MA's), (63, 77233), (83, 77143), (99, 77092), (102, 77065), (104, 77053), (117, 76969), (120, 76963), (132, 76924), (157, 76807), (170, 76756), (207, 76624), (208, 76621), (209, 76615), (223, 76576), (232, 76510), (236, 76483),

Gene: Adjutor_56 Start: 43047, Stop: 44225, Start Num: 46

Candidate Starts for Adjutor_56:

(4, 42765), (9, 42795), (13, 42858), (Start: 46 @43047 has 89 MA's), (Start: 56 @43095 has 3 MA's), (60, 43134), (62, 43146), (83, 43245), (97, 43308), (106, 43362), (113, 43410), (124, 43476), (153, 43590), (159, 43617), (163, 43647), (173, 43692), (198, 43926), (212, 43992), (215, 44001), (218, 44010), (240, 44136), (250, 44217),

Gene: Agamoto_37 Start: 27336, Stop: 26395, Start Num: 47

Candidate Starts for Agamoto_37:

(Start: 47 @27336 has 7 MA's), (84, 27135), (104, 27027), (149, 26820), (154, 26799), (172, 26733), (175, 26721), (202, 26628), (220, 26571), (229, 26508), (231, 26499), (242, 26445),

Gene: Albanese_42 Start: 28164, Stop: 29111, Start Num: 46

Candidate Starts for Albanese_42:

(Start: 46 @28164 has 89 MA's), (71, 28311), (74, 28329), (79, 28353), (97, 28428), (111, 28509), (112, 28524), (115, 28536), (146, 28686), (166, 28755), (167, 28758), (225, 28992), (231, 29037), (232, 29040), (236, 29067), (237, 29070),

Gene: Aledel_39 Start: 27504, Stop: 28451, Start Num: 48

Candidate Starts for Aledel_39:

(Start: 48 @27504 has 17 MA's), (58, 27570), (74, 27669), (79, 27693), (95, 27759), (104, 27807), (109, 27831), (112, 27861), (116, 27879), (117, 27891), (127, 27933), (162, 28071), (166, 28092), (167, 28095), (219, 28302), (231, 28377), (232, 28380), (236, 28407), (237, 28410),

Gene: Alove_42 Start: 27509, Stop: 28522, Start Num: 21

Candidate Starts for Alove_42:

(Start: 21 @27509 has 19 MA's), (58, 27638), (71, 27719), (88, 27788), (106, 27872), (120, 27956), (133, 28007), (146, 28076), (147, 28079), (175, 28181), (177, 28187), (195, 28271), (199, 28286), (209, 28337), (223, 28385), (231, 28448),

Gene: AnnabelLee_37 Start: 24525, Stop: 23593, Start Num: 47

Candidate Starts for AnnabelLee_37:

(Start: 47 @24525 has 7 MA's), (73, 24366), (87, 24321), (115, 24159), (125, 24120), (149, 24018), (154, 23997), (162, 23970), (172, 23931), (194, 23871), (202, 23826), (220, 23769), (223, 23760), (224, 23757), (229, 23706), (231, 23697), (239, 23655), (242, 23643),

Gene: AppleCider_41 Start: 27545, Stop: 28492, Start Num: 46

Candidate Starts for AppleCider_41:

(Start: 46 @27545 has 89 MA's), (70, 27689), (71, 27692), (73, 27707), (79, 27734), (94, 27797), (98, 27812), (106, 27860), (112, 27905), (115, 27917), (118, 27941), (146, 28067), (166, 28136), (167, 28139), (201, 28283), (219, 28343), (231, 28418), (232, 28421), (236, 28448), (237, 28451),

Gene: Araceli_50 Start: 35827, Stop: 36834, Start Num: 41

Candidate Starts for Araceli_50:

(5, 35590), (16, 35740), (Start: 41 @35827 has 11 MA's), (71, 35992), (77, 36022), (84, 36058), (100, 36133), (104, 36166), (109, 36190), (117, 36250), (128, 36280), (133, 36298), (134, 36301), (139, 36334), (147, 36370), (169, 36460), (183, 36556), (209, 36655), (212, 36667), (231, 36745), (236, 36778), (243, 36811),

Gene: Archimedes_34 Start: 31001, Stop: 30105, Start Num: 53

Candidate Starts for Archimedes_34:

(14, 31136), (17, 31091), (Start: 18 @31085 has 1 MA's), (19, 31076), (38, 31007), (40, 31004), (Start: 53 @31001 has 1 MA's), (70, 30872), (71, 30869), (82, 30821), (106, 30728), (114, 30677), (118, 30647), (126, 30617), (133, 30593), (138, 30560), (162, 30476), (167, 30452), (189, 30404), (192, 30398), (231, 30227),

Gene: Artu_95 Start: 79854, Stop: 80825, Start Num: 34

Candidate Starts for Artu_95:

(Start: 34 @79854 has 9 MA's), (44, 79878), (Start: 51 @79899 has 4 MA's), (61, 79974), (67, 80013), (104, 80187), (108, 80202), (113, 80244), (118, 80277), (127, 80304), (128, 80307), (134, 80328), (144, 80391), (152, 80412), (155, 80427), (158, 80439), (202, 80604), (208, 80625), (229, 80724), (231, 80733), (236, 80763),

Gene: Atuin_97 Start: 83319, Stop: 84290, Start Num: 34

Candidate Starts for Atuin_97:

(Start: 34 @83319 has 9 MA's), (44, 83343), (Start: 51 @83364 has 4 MA's), (67, 83478), (104, 83652), (108, 83667), (118, 83742), (127, 83769), (128, 83772), (132, 83787), (144, 83856), (152, 83877), (155, 83892), (158, 83904), (194, 84024), (199, 84045), (202, 84069), (208, 84090), (229, 84189), (231, 84198),

Gene: Audell_36 Start: 26923, Stop: 25982, Start Num: 47

Candidate Starts for Audell_36:

(Start: 47 @26923 has 7 MA's), (104, 26614), (149, 26407), (154, 26386), (172, 26320), (175, 26308), (202, 26215), (220, 26158), (229, 26095), (231, 26086), (239, 26044), (242, 26032),

Gene: AustinPowers_39 Start: 27502, Stop: 28449, Start Num: 48

Candidate Starts for AustinPowers_39:

(Start: 48 @27502 has 17 MA's), (58, 27568), (74, 27667), (79, 27691), (95, 27757), (104, 27805), (109, 27829), (112, 27859), (116, 27877), (117, 27889), (127, 27931), (162, 28069), (166, 28090), (167, 28093), (219, 28300), (231, 28375), (232, 28378), (236, 28405), (237, 28408),

Gene: AyoTeo_44 Start: 27806, Stop: 28819, Start Num: 21

Candidate Starts for AyoTeo_44:

(Start: 21 @27806 has 19 MA's), (58, 27935), (71, 28016), (88, 28085), (106, 28169), (120, 28253), (133, 28304), (146, 28373), (147, 28376), (175, 28478), (177, 28484), (195, 28568), (199, 28583), (209, 28634), (223, 28682), (231, 28745),

Gene: Beethoven_41 Start: 27476, Stop: 28423, Start Num: 46

Candidate Starts for Beethoven_41:

(Start: 46 @27476 has 89 MA's), (59, 27545), (68, 27608), (70, 27620), (71, 27623), (76, 27647), (98, 27743), (106, 27791), (111, 27821), (115, 27848), (131, 27920), (167, 28070), (169, 28079), (192,

28166), (201, 28214), (219, 28274), (231, 28349), (232, 28352), (236, 28379), (237, 28382),

Gene: Bennie_39 Start: 26287, Stop: 27234, Start Num: 46

Candidate Starts for Bennie_39:

(Start: 46 @26287 has 89 MA's), (68, 26419), (70, 26431), (71, 26434), (76, 26458), (98, 26554), (106, 26602), (115, 26659), (131, 26731), (133, 26740), (167, 26881), (169, 26890), (192, 26977), (219, 27085), (231, 27160), (232, 27163), (236, 27190), (237, 27193),

Gene: Benry_42 Start: 26004, Stop: 27011, Start Num: 21

Candidate Starts for Benry_42:

(Start: 21 @26004 has 19 MA's), (58, 26133), (71, 26214), (106, 26361), (147, 26568), (152, 26580), (168, 26643), (175, 26670), (177, 26676), (195, 26760), (199, 26775), (231, 26937),

Gene: Beyoncage_54 Start: 40427, Stop: 41632, Start Num: 27

Candidate Starts for Beyoncage_54:

(Start: 27 @40427 has 4 MA's), (Start: 47 @40487 has 7 MA's), (50, 40496), (71, 40634), (80, 40658), (109, 40811), (113, 40844), (169, 41090), (170, 41093), (171, 41099), (175, 41114), (186, 41234), (191, 41282), (195, 41312), (196, 41318), (201, 41348), (210, 41381), (215, 41399), (217, 41405), (231, 41486), (236, 41516), (238, 41528), (247, 41591),

Gene: Big4_102 Start: 76433, Stop: 75498, Start Num: 42

Candidate Starts for Big4_102:

(Start: 42 @76433 has 6 MA's), (61, 76331), (62, 76328), (63, 76316), (69, 76280), (83, 76226), (99, 76175), (102, 76148), (104, 76136), (117, 76052), (120, 76046), (125, 76031), (132, 76007), (140, 75953), (157, 75890), (207, 75707), (208, 75704), (223, 75659), (232, 75593), (236, 75566),

Gene: BigMack_39 Start: 26387, Stop: 27334, Start Num: 46

Candidate Starts for BigMack_39:

(Start: 46 @26387 has 89 MA's), (57, 26444), (59, 26456), (68, 26519), (70, 26531), (71, 26534), (76, 26558), (98, 26654), (106, 26702), (111, 26732), (115, 26759), (131, 26831), (167, 26981), (169, 26990), (192, 27077), (201, 27125), (219, 27185), (231, 27260), (232, 27263), (236, 27290), (237, 27293),

Gene: BigMama_55 Start: 43123, Stop: 44301, Start Num: 46

Candidate Starts for BigMama_55:

(4, 42841), (9, 42871), (13, 42934), (Start: 46 @43123 has 89 MA's), (Start: 56 @43171 has 3 MA's), (60, 43210), (62, 43222), (83, 43321), (97, 43384), (106, 43438), (113, 43486), (124, 43552), (153, 43666), (159, 43693), (163, 43723), (173, 43768), (198, 44002), (212, 44068), (215, 44077), (218, 44086), (240, 44212), (250, 44293),

Gene: BiteSize_54 Start: 40513, Stop: 41718, Start Num: 27

Candidate Starts for BiteSize_54:

(Start: 27 @40513 has 4 MA's), (Start: 47 @40573 has 7 MA's), (50, 40582), (71, 40720), (80, 40744), (109, 40897), (113, 40930), (169, 41176), (170, 41179), (171, 41185), (175, 41200), (186, 41320), (191, 41368), (195, 41398), (196, 41404), (201, 41434), (210, 41467), (215, 41485), (217, 41491), (231, 41572), (236, 41602), (238, 41614), (247, 41677),

Gene: Bloom_107 Start: 83495, Stop: 84466, Start Num: 34

Candidate Starts for Bloom_107:

(Start: 34 @83495 has 9 MA's), (44, 83519), (Start: 51 @83540 has 4 MA's), (65, 83639), (67, 83654), (71, 83678), (78, 83711), (104, 83828), (108, 83843), (125, 83939), (128, 83948), (152, 84053), (155, 84068), (157, 84077), (175, 84152), (192, 84194), (202, 84245), (208, 84266), (231, 84374), (236, 84404),

Gene: BlueNGold_164 Start: 94575, Stop: 93583, Start Num: 32

Candidate Starts for BlueNGold_164:

(26, 94599), (Start: 32 @94575 has 4 MA's), (58, 94473), (69, 94401), (104, 94248), (118, 94158), (142, 94050), (145, 94041), (154, 94011), (155, 94008), (157, 93999), (166, 93954), (172, 93930), (199, 93849), (201, 93828), (212, 93786), (231, 93699), (232, 93696), (236, 93669), (245, 93606), (246, 93603),

Gene: Bodacious_39 Start: 26343, Stop: 27293, Start Num: 46

Candidate Starts for Bodacious_39:

(Start: 46 @26343 has 89 MA's), (55, 26376), (59, 26412), (68, 26475), (70, 26487), (71, 26490), (76, 26514), (98, 26610), (106, 26658), (109, 26673), (115, 26715), (118, 26739), (131, 26787), (162, 26913), (166, 26937), (167, 26940), (169, 26949), (201, 27084), (219, 27144), (231, 27219), (232, 27222), (236, 27249), (237, 27252),

Gene: Bogota_51 Start: 36181, Stop: 37179, Start Num: 41

Candidate Starts for Bogota_51:

(3, 35788), (5, 35944), (12, 36022), (Start: 39 @36175 has 1 MA's), (Start: 41 @36181 has 11 MA's), (71, 36346), (76, 36370), (100, 36478), (104, 36511), (109, 36535), (117, 36595), (128, 36625), (130, 36631), (133, 36643), (134, 36646), (136, 36670), (139, 36679), (147, 36715), (169, 36805), (183, 36901), (209, 37000), (212, 37012), (243, 37156),

Gene: BooTeria_99 Start: 80012, Stop: 80938, Start Num: 51

Candidate Starts for BooTeria_99:

(44, 79991), (Start: 51 @80012 has 4 MA's), (61, 80087), (67, 80126), (104, 80300), (108, 80315), (118, 80390), (127, 80417), (128, 80420), (134, 80441), (144, 80504), (152, 80525), (155, 80540), (158, 80552), (202, 80717), (208, 80738), (229, 80837), (231, 80846), (236, 80876),

Gene: Boopy_167 Start: 94586, Stop: 93594, Start Num: 32

Candidate Starts for Boopy_167:

(26, 94610), (Start: 32 @94586 has 4 MA's), (58, 94484), (69, 94412), (104, 94259), (118, 94169), (142, 94061), (145, 94052), (154, 94022), (155, 94019), (157, 94010), (166, 93965), (172, 93941), (199, 93860), (201, 93839), (212, 93797), (231, 93710), (232, 93707), (236, 93680), (245, 93617), (246, 93614),

Gene: BrotherBLo_41 Start: 27508, Stop: 28455, Start Num: 46

Candidate Starts for BrotherBLo_41:

(Start: 46 @27508 has 89 MA's), (59, 27577), (68, 27640), (70, 27652), (71, 27655), (76, 27679), (98, 27775), (106, 27823), (111, 27853), (115, 27880), (131, 27952), (167, 28102), (169, 28111), (192, 28198), (201, 28246), (219, 28306), (231, 28381), (232, 28384), (236, 28411), (237, 28414),

Gene: Butterscotch_56 Start: 43107, Stop: 44285, Start Num: 46

Candidate Starts for Butterscotch_56:

(4, 42825), (9, 42855), (13, 42918), (Start: 46 @43107 has 89 MA's), (Start: 56 @43155 has 3 MA's), (60, 43194), (62, 43206), (83, 43305), (97, 43368), (106, 43422), (113, 43470), (124, 43536), (153, 43650), (159, 43677), (163, 43707), (173, 43752), (198, 43986), (212, 44052), (215, 44061), (218, 44070), (240, 44196), (250, 44277),

Gene: CallieOMalley_41 Start: 27545, Stop: 28492, Start Num: 46

Candidate Starts for CallieOMalley_41:

(Start: 46 @27545 has 89 MA's), (70, 27689), (71, 27692), (73, 27707), (79, 27734), (94, 27797), (98, 27812), (106, 27860), (112, 27905), (115, 27917), (118, 27941), (146, 28067), (166, 28136), (167, 28139), (201, 28283), (219, 28343), (231, 28418), (232, 28421), (236, 28448), (237, 28451),

Gene: Canowicakte_41 Start: 27580, Stop: 28527, Start Num: 46

Candidate Starts for Canowicakte_41:

(Start: 46 @27580 has 89 MA's), (70, 27724), (71, 27727), (73, 27742), (79, 27769), (94, 27832), (98, 27847), (106, 27895), (112, 27940), (115, 27952), (118, 27976), (146, 28102), (166, 28171), (167, 28174), (201, 28318), (219, 28378), (231, 28453), (232, 28456), (236, 28483), (237, 28486),

Gene: CardboardBox_38 Start: 24528, Stop: 23596, Start Num: 47

Candidate Starts for CardboardBox_38:

(Start: 47 @24528 has 7 MA's), (73, 24369), (87, 24324), (115, 24162), (125, 24123), (149, 24021), (154, 24000), (162, 23973), (172, 23934), (194, 23874), (202, 23829), (220, 23772), (223, 23763), (224, 23760), (229, 23709), (231, 23700), (239, 23658), (242, 23646),

Gene: Carpal_41 Start: 27488, Stop: 28435, Start Num: 46

Candidate Starts for Carpal_41:

(Start: 46 @27488 has 89 MA's), (59, 27557), (68, 27620), (70, 27632), (71, 27635), (76, 27659), (98, 27755), (106, 27803), (111, 27833), (115, 27860), (131, 27932), (167, 28082), (169, 28091), (192, 28178), (201, 28226), (219, 28286), (231, 28361), (232, 28364), (236, 28391), (237, 28394),

Gene: Cece_96 Start: 79474, Stop: 78539, Start Num: 42

Candidate Starts for Cece_96:

(Start: 42 @79474 has 6 MA's), (Start: 45 @79465 has 7 MA's), (59, 79390), (66, 79339), (78, 79279), (99, 79216), (102, 79189), (104, 79177), (117, 79093), (120, 79087), (122, 79084), (125, 79072), (132, 79048), (140, 78994), (155, 78940), (157, 78931), (158, 78928), (207, 78748), (208, 78745), (209, 78739), (223, 78700), (231, 78637), (232, 78634),

Gene: ChamoyPickle_39 Start: 25068, Stop: 24136, Start Num: 47

Candidate Starts for ChamoyPickle_39:

(Start: 47 @25068 has 7 MA's), (73, 24909), (87, 24864), (115, 24702), (125, 24663), (149, 24561), (154, 24540), (162, 24513), (172, 24474), (194, 24414), (202, 24369), (220, 24312), (223, 24303), (224, 24300), (229, 24249), (231, 24240), (239, 24198), (242, 24186),

Gene: ChewChew_39 Start: 26335, Stop: 27285, Start Num: 46

Candidate Starts for ChewChew_39:

(Start: 46 @26335 has 89 MA's), (68, 26467), (70, 26479), (71, 26482), (76, 26506), (98, 26602), (106, 26650), (115, 26707), (118, 26731), (129, 26773), (131, 26779), (162, 26905), (166, 26929), (167, 26932), (169, 26941), (201, 27076), (219, 27136), (231, 27211), (236, 27241), (237, 27244),

Gene: Chill_59 Start: 43170, Stop: 44348, Start Num: 46

Candidate Starts for Chill_59:

(4, 42888), (9, 42918), (13, 42981), (Start: 46 @43170 has 89 MA's), (Start: 56 @43218 has 3 MA's), (60, 43257), (62, 43269), (83, 43368), (97, 43431), (106, 43485), (113, 43533), (124, 43599), (153, 43713), (159, 43740), (163, 43770), (173, 43815), (198, 44049), (212, 44115), (215, 44124), (218, 44133), (240, 44259), (250, 44340),

Gene: Chilliams_102 Start: 76293, Stop: 77267, Start Num: 34

Candidate Starts for Chilliams_102:

(Start: 34 @76293 has 9 MA's), (44, 76317), (Start: 51 @76338 has 4 MA's), (65, 76437), (78, 76509), (104, 76626), (108, 76641), (128, 76746), (152, 76851), (155, 76866), (159, 76881), (194, 76998), (202, 77043), (208, 77064), (231, 77172), (236, 77202),

Gene: ChipsNGuac_38 Start: 24528, Stop: 23596, Start Num: 47

Candidate Starts for ChipsNGuac_38:

(Start: 47 @24528 has 7 MA's), (73, 24369), (87, 24324), (115, 24162), (125, 24123), (149, 24021), (154, 24000), (162, 23973), (172, 23934), (194, 23874), (202, 23829), (220, 23772), (223, 23763), (224, 23760), (229, 23709), (231, 23700), (239, 23658), (242, 23646),

Gene: Cholula_41 Start: 27534, Stop: 28481, Start Num: 46

Candidate Starts for Cholula_41:

(Start: 46 @27534 has 89 MA's), (59, 27603), (68, 27666), (70, 27678), (71, 27681), (76, 27705), (98, 27801), (106, 27849), (111, 27879), (115, 27906), (131, 27978), (167, 28128), (169, 28137), (192, 28224), (201, 28272), (219, 28332), (231, 28407), (232, 28410), (236, 28437), (237, 28440),

Gene: Chridison_38 Start: 27433, Stop: 28383, Start Num: 48

Candidate Starts for Chridison_38:

(25, 27379), (Start: 48 @27433 has 17 MA's), (71, 27580), (74, 27598), (95, 27688), (104, 27739), (111, 27778), (112, 27793), (116, 27811), (129, 27871), (156, 27988), (166, 28027), (169, 28039), (192, 28126), (201, 28174), (219, 28234), (231, 28309), (232, 28312), (236, 28339), (237, 28342),

Gene: Christian_39 Start: 26331, Stop: 27281, Start Num: 46

Candidate Starts for Christian_39:

(Start: 46 @26331 has 89 MA's), (68, 26463), (70, 26475), (71, 26478), (76, 26502), (98, 26598), (106, 26646), (115, 26703), (118, 26727), (131, 26775), (162, 26901), (166, 26925), (167, 26928), (169, 26937), (201, 27072), (219, 27132), (231, 27207), (236, 27237), (237, 27240),

Gene: Cicada_44 Start: 27802, Stop: 28815, Start Num: 21

Candidate Starts for Cicada_44:

(Start: 21 @27802 has 19 MA's), (71, 28012), (88, 28081), (106, 28165), (115, 28222), (133, 28300), (146, 28369), (147, 28372), (168, 28447), (175, 28474), (199, 28579), (209, 28630), (223, 28678), (231, 28741),

Gene: CristinaYang_39 Start: 26331, Stop: 27281, Start Num: 46

Candidate Starts for CristinaYang_39:

(Start: 46 @26331 has 89 MA's), (68, 26463), (70, 26475), (71, 26478), (76, 26502), (98, 26598), (106, 26646), (115, 26703), (118, 26727), (129, 26769), (131, 26775), (162, 26901), (166, 26925), (167, 26928), (169, 26937), (201, 27072), (219, 27132), (231, 27207), (236, 27237), (237, 27240),

Gene: Crosby_51 Start: 35943, Stop: 36941, Start Num: 41

Candidate Starts for Crosby_51:

(5, 35706), (10, 35733), (12, 35784), (Start: 39 @35937 has 1 MA's), (Start: 41 @35943 has 11 MA's), (71, 36108), (76, 36132), (100, 36240), (104, 36273), (109, 36297), (117, 36357), (128, 36387), (130, 36393), (133, 36405), (134, 36408), (139, 36441), (147, 36477), (169, 36567), (183, 36663), (202, 36735), (212, 36774), (243, 36918),

Gene: Daiboju_39 Start: 27511, Stop: 28464, Start Num: 48

Candidate Starts for Daiboju_39:

(Start: 48 @27511 has 17 MA's), (57, 27568), (71, 27658), (74, 27676), (95, 27766), (104, 27817), (111, 27856), (112, 27871), (116, 27889), (117, 27901), (129, 27949), (156, 28066), (166, 28105), (169, 28117), (219, 28315), (231, 28390), (236, 28420), (237, 28423),

Gene: Delton_58 Start: 43505, Stop: 44683, Start Num: 46

Candidate Starts for Delton_58:

(4, 43223), (9, 43253), (13, 43316), (Start: 46 @43505 has 89 MA's), (Start: 56 @43553 has 3 MA's), (60, 43592), (62, 43604), (83, 43703), (97, 43766), (106, 43820), (113, 43868), (124, 43934), (153, 44048), (159, 44075), (163, 44105), (173, 44150), (198, 44384), (212, 44450), (215, 44459), (218, 44468), (240, 44594), (250, 44675),

Gene: Dino_42 Start: 27635, Stop: 28582, Start Num: 46

Candidate Starts for Dino_42:

(Start: 46 @27635 has 89 MA's), (68, 27767), (70, 27779), (71, 27782), (76, 27806), (98, 27902), (106, 27950), (111, 27980), (115, 28007), (131, 28079), (167, 28229), (169, 28238), (192, 28325), (201, 28373), (219, 28433), (231, 28508), (236, 28538), (237, 28541),

Gene: Djokovic_54 Start: 40486, Stop: 41631, Start Num: 47

Candidate Starts for Djokovic_54:

(Start: 27 @40426 has 4 MA's), (Start: 47 @40486 has 7 MA's), (50, 40495), (71, 40633), (80, 40657), (109, 40810), (113, 40843), (169, 41089), (170, 41092), (171, 41098), (175, 41113), (186, 41233), (191, 41281), (195, 41311), (196, 41317), (201, 41347), (210, 41380), (215, 41398), (217, 41404), (231, 41485), (236, 41515), (238, 41527), (247, 41590),

Gene: Dodo_113 Start: 77660, Stop: 76725, Start Num: 42

Candidate Starts for Dodo_113:

(Start: 42 @77660 has 6 MA's), (Start: 45 @77651 has 7 MA's), (63, 77543), (83, 77453), (99, 77402), (102, 77375), (104, 77363), (117, 77279), (120, 77273), (132, 77234), (157, 77117), (170, 77066), (207, 76934), (208, 76931), (209, 76925), (223, 76886), (232, 76820), (236, 76793),

Gene: DrRobert_38 Start: 26111, Stop: 27061, Start Num: 46

Candidate Starts for DrRobert_38:

(Start: 46 @26111 has 89 MA's), (59, 26180), (68, 26243), (70, 26255), (71, 26258), (73, 26273), (74, 26276), (76, 26282), (98, 26378), (106, 26426), (109, 26441), (115, 26483), (118, 26507), (127, 26543), (129, 26549), (131, 26555), (162, 26681), (166, 26705), (167, 26708), (169, 26717), (201, 26852), (219, 26912), (231, 26987), (232, 26990), (236, 27017), (237, 27020),

Gene: DreamTeam_39 Start: 26441, Stop: 27388, Start Num: 46

Candidate Starts for DreamTeam_39:

(Start: 46 @26441 has 89 MA's), (59, 26510), (68, 26573), (70, 26585), (71, 26588), (76, 26612), (98, 26708), (106, 26756), (115, 26813), (117, 26831), (127, 26873), (131, 26885), (201, 27179), (219, 27239), (231, 27314), (232, 27317), (236, 27344), (237, 27347),

Gene: Dryad_70 Start: 48069, Stop: 47071, Start Num: 45

Candidate Starts for Dryad_70:

(37, 48093), (Start: 45 @48069 has 7 MA's), (Start: 53 @48057 has 1 MA's), (61, 47985), (63, 47976), (106, 47778), (107, 47775), (133, 47619), (139, 47583), (159, 47508), (160, 47496), (173, 47433), (176, 47421), (182, 47364), (198, 47334), (206, 47292), (213, 47265), (215, 47259), (218, 47250), (229, 47178), (230, 47172),

Gene: DunneganBoMo_92 Start: 79281, Stop: 80207, Start Num: 51

Candidate Starts for DunneganBoMo_92:

(44, 79260), (Start: 51 @79281 has 4 MA's), (61, 79356), (67, 79395), (104, 79569), (108, 79584), (118, 79659), (127, 79686), (128, 79689), (134, 79710), (144, 79773), (152, 79794), (155, 79809), (158, 79821), (202, 79986), (208, 80007), (229, 80106), (231, 80115), (236, 80145),

Gene: Ellewin_91 Start: 78692, Stop: 79618, Start Num: 51

Candidate Starts for Ellewin_91:

(44, 78671), (Start: 51 @78692 has 4 MA's), (61, 78767), (67, 78806), (104, 78980), (108, 78995), (118, 79070), (127, 79097), (128, 79100), (134, 79121), (144, 79184), (152, 79205), (155, 79220), (158, 79232), (202, 79397), (208, 79418), (229, 79517), (231, 79526), (236, 79556),

Gene: Emmetator_95 Start: 79350, Stop: 80162, Start Num: 67

Candidate Starts for Emmetator_95:

(Start: 34 @79191 has 9 MA's), (44, 79215), (Start: 51 @79236 has 4 MA's), (61, 79311), (67, 79350), (104, 79524), (108, 79539), (109, 79548), (118, 79614), (127, 79641), (128, 79644), (134, 79665), (144, 79728), (152, 79749), (155, 79764), (158, 79776), (202, 79941), (208, 79962), (229, 80061), (231, 80070), (236, 80100),

Gene: Erasmago_104 Start: 74119, Stop: 73184, Start Num: 42

Candidate Starts for Erasmago_104:

(Start: 42 @74119 has 6 MA's), (63, 74002), (69, 73966), (83, 73912), (99, 73861), (102, 73834), (104, 73822), (117, 73738), (120, 73732), (125, 73717), (132, 73693), (140, 73639), (157, 73576), (207, 73393), (208, 73390), (223, 73345), (232, 73279), (236, 73252),

Gene: Erk16_56 Start: 43209, Stop: 44387, Start Num: 46

Candidate Starts for Erk16_56:

(4, 42927), (9, 42957), (13, 43020), (Start: 46 @43209 has 89 MA's), (Start: 56 @43257 has 3 MA's), (60, 43296), (62, 43308), (83, 43407), (97, 43470), (106, 43524), (113, 43572), (124, 43638), (153, 43752), (159, 43779), (163, 43809), (173, 43854), (198, 44088), (212, 44154), (215, 44163), (218, 44172), (240, 44298), (250, 44379),

Gene: EstebanJulior_40 Start: 27489, Stop: 28439, Start Num: 46

Candidate Starts for EstebanJulior_40:

(Start: 46 @27489 has 89 MA's), (68, 27621), (71, 27636), (73, 27651), (76, 27660), (98, 27756), (106, 27804), (109, 27819), (115, 27861), (118, 27885), (131, 27933), (133, 27942), (162, 28059), (167, 28086), (169, 28095), (219, 28290), (223, 28302), (231, 28365), (232, 28368), (236, 28395), (237, 28398),

Gene: Eunoia_39 Start: 27504, Stop: 28451, Start Num: 48

Candidate Starts for Eunoia_39:

(Start: 48 @27504 has 17 MA's), (58, 27570), (74, 27669), (79, 27693), (95, 27759), (104, 27807), (109, 27831), (112, 27861), (116, 27879), (117, 27891), (127, 27933), (162, 28071), (166, 28092), (167, 28095), (219, 28302), (231, 28377), (232, 28380), (236, 28407), (237, 28410),

Gene: Ezurina_36 Start: 25615, Stop: 24653, Start Num: 47

Candidate Starts for Ezurina_36:

(Start: 47 @25615 has 7 MA's), (73, 25456), (85, 25420), (115, 25249), (125, 25180), (126, 25177), (137, 25123), (149, 25078), (154, 25057), (172, 24991), (194, 24931), (202, 24886), (203, 24883), (220, 24829), (223, 24820), (224, 24817), (229, 24766), (231, 24757), (239, 24715), (242, 24703),

Gene: FireCastle_42 Start: 27533, Stop: 28546, Start Num: 21

Candidate Starts for FireCastle_42:

(Start: 21 @27533 has 19 MA's), (Start: 54 @27614 has 2 MA's), (70, 27740), (71, 27743), (88, 27812), (92, 27836), (106, 27896), (109, 27911), (115, 27953), (133, 28031), (146, 28100), (147, 28103), (152, 28115), (165, 28169), (175, 28205), (177, 28211), (195, 28295), (199, 28310), (209, 28361), (223, 28409), (228, 28457), (231, 28472),

Gene: FloraSnap32_103 Start: 82392, Stop: 83363, Start Num: 34

Candidate Starts for FloraSnap32_103:

(Start: 34 @82392 has 9 MA's), (44, 82416), (Start: 51 @82437 has 4 MA's), (65, 82536), (67, 82551), (71, 82575), (78, 82608), (104, 82725), (108, 82740), (125, 82836), (128, 82845), (152, 82950), (155, 82965), (157, 82974), (175, 83049), (192, 83091), (202, 83142), (208, 83163), (229, 83262), (231, 83271), (236, 83301),

Gene: Fluke_42 Start: 27751, Stop: 28698, Start Num: 46

Candidate Starts for Fluke_42:

(Start: 46 @27751 has 89 MA's), (59, 27820), (68, 27883), (70, 27895), (71, 27898), (76, 27922), (98, 28018), (106, 28066), (111, 28096), (115, 28123), (131, 28195), (167, 28345), (169, 28354), (192, 28441), (201, 28489), (219, 28549), (231, 28624), (232, 28627), (236, 28654), (237, 28657),

Gene: Forza_168 Start: 94503, Stop: 93511, Start Num: 32

Candidate Starts for Forza_168:

(26, 94527), (Start: 32 @94503 has 4 MA's), (58, 94401), (69, 94329), (104, 94176), (118, 94086), (142, 93978), (145, 93969), (154, 93939), (155, 93936), (157, 93927), (166, 93882), (172, 93858), (199, 93777), (201, 93756), (212, 93714), (231, 93627), (232, 93624), (236, 93597), (245, 93534), (246, 93531),

Gene: Frizzle_31 Start: 30097, Stop: 29171, Start Num: 54

Candidate Starts for Frizzle_31:

(Start: 18 @30205 has 1 MA's), (52, 30103), (Start: 53 @30100 has 1 MA's), (Start: 54 @30097 has 2 MA's), (64, 30010), (79, 29926), (82, 29920), (91, 29893), (118, 29746), (123, 29725), (125, 29719), (131, 29701), (133, 29692), (150, 29614), (152, 29608), (164, 29566), (166, 29554), (189, 29503), (192, 29497), (233, 29308), (245, 29227), (246, 29224), (251, 29185),

Gene: FrostedClock_106 Start: 83692, Stop: 84663, Start Num: 34

Candidate Starts for FrostedClock_106:

(Start: 34 @83692 has 9 MA's), (44, 83716), (Start: 51 @83737 has 4 MA's), (65, 83836), (67, 83851), (71, 83875), (78, 83908), (104, 84025), (108, 84040), (125, 84136), (128, 84145), (152, 84250), (155, 84265), (157, 84274), (175, 84349), (192, 84391), (202, 84442), (208, 84463), (231, 84571), (236, 84601),

Gene: GMA2_62 Start: 65413, Stop: 64418, Start Num: 31

Candidate Starts for GMA2_62:

(31, 65413), (59, 65302), (64, 65263), (77, 65191), (104, 65080), (125, 64966), (132, 64942), (135, 64915), (138, 64906), (142, 64879), (155, 64837), (157, 64828), (172, 64762), (192, 64708), (194, 64702), (202, 64657), (210, 64627), (211, 64621), (222, 64594), (231, 64531), (232, 64528), (236, 64501), (241, 64483), (245, 64438),

Gene: Galactica_39 Start: 28326, Stop: 29291, Start Num: 33

Candidate Starts for Galactica_39:

(Start: 33 @28326 has 2 MA's), (68, 28488), (89, 28563), (105, 28626), (106, 28632), (129, 28755), (133, 28770), (134, 28773), (136, 28797), (156, 28872), (166, 28908), (188, 29025), (199, 29064), (212, 29127),

Gene: Gerri43_38 Start: 24528, Stop: 23596, Start Num: 47

Candidate Starts for Gerri43_38:

(Start: 47 @24528 has 7 MA's), (73, 24369), (87, 24324), (115, 24162), (125, 24123), (149, 24021), (154, 24000), (162, 23973), (172, 23934), (194, 23874), (202, 23829), (220, 23772), (223, 23763), (224, 23760), (229, 23709), (231, 23700), (239, 23658), (242, 23646),

Gene: Ghobes_32 Start: 30098, Stop: 29172, Start Num: 54

Candidate Starts for Ghobes_32:

(Start: 18 @30206 has 1 MA's), (52, 30104), (Start: 53 @30101 has 1 MA's), (Start: 54 @30098 has 2 MA's), (64, 30011), (79, 29927), (82, 29921), (91, 29894), (118, 29747), (123, 29726), (125, 29720), (131, 29702), (150, 29615), (152, 29609), (164, 29567), (166, 29555), (189, 29504), (192, 29498), (233, 29309), (245, 29228), (246, 29225), (251, 29186),

Gene: Gibson_66 Start: 47338, Stop: 46340, Start Num: 45

Candidate Starts for Gibson_66:

(Start: 45 @47338 has 7 MA's), (Start: 53 @47326 has 1 MA's), (106, 47047), (107, 47044), (125, 46915), (133, 46888), (139, 46852), (159, 46777), (160, 46765), (173, 46702), (198, 46603), (206, 46561), (215, 46528), (218, 46519), (229, 46447), (230, 46441), (244, 46357),

Gene: Gisselle_39 Start: 26441, Stop: 27388, Start Num: 46

Candidate Starts for Gisselle_39:

(Start: 46 @26441 has 89 MA's), (59, 26510), (68, 26573), (70, 26585), (71, 26588), (76, 26612), (98, 26708), (106, 26756), (115, 26813), (117, 26831), (127, 26873), (131, 26885), (201, 27179), (219, 27239), (231, 27314), (232, 27317), (236, 27344), (237, 27347),

Gene: Giuseppe_58 Start: 43075, Stop: 44253, Start Num: 46

Candidate Starts for Giuseppe_58:

(4, 42793), (9, 42823), (13, 42886), (Start: 46 @43075 has 89 MA's), (Start: 56 @43123 has 3 MA's), (60, 43162), (62, 43174), (83, 43273), (97, 43336), (106, 43390), (113, 43438), (124, 43504), (153, 43618), (159, 43645), (163, 43675), (173, 43720), (198, 43954), (212, 44020), (215, 44029), (218, 44038), (240, 44164), (250, 44245),

Gene: Glenn_42 Start: 27742, Stop: 28689, Start Num: 46

Candidate Starts for Glenn_42:

(Start: 46 @27742 has 89 MA's), (68, 27874), (70, 27886), (71, 27889), (76, 27913), (98, 28009), (106, 28057), (111, 28087), (115, 28114), (131, 28186), (167, 28336), (169, 28345), (192, 28432), (201, 28480), (219, 28540), (231, 28615), (232, 28618), (236, 28645), (237, 28648),

Gene: GodonK_181 Start: 91029, Stop: 90010, Start Num: 29

Candidate Starts for GodonK_181:

(Start: 29 @91029 has 1 MA's), (Start: 54 @90957 has 2 MA's), (Start: 56 @90936 has 3 MA's), (61, 90888), (64, 90867), (77, 90795), (96, 90732), (102, 90696), (104, 90684), (108, 90669), (139, 90510), (145, 90477), (148, 90468), (157, 90435), (159, 90429), (167, 90390), (171, 90372), (172, 90369), (199, 90288), (201, 90267), (208, 90243), (222, 90201), (231, 90138), (232, 90135), (236, 90108), (241, 90090),

Gene: GoldenEssence_89 Start: 77287, Stop: 78258, Start Num: 34

Candidate Starts for GoldenEssence_89:

(Start: 34 @77287 has 9 MA's), (44, 77311), (Start: 51 @77332 has 4 MA's), (65, 77431), (67, 77446), (71, 77470), (78, 77503), (104, 77620), (108, 77635), (125, 77731), (128, 77740), (152, 77845), (155, 77860), (157, 77869), (175, 77944), (192, 77986), (202, 78037), (208, 78058), (229, 78157), (231, 78166), (236, 78196),

Gene: Goodman_43 Start: 27572, Stop: 28585, Start Num: 21

Candidate Starts for Goodman_43:

(15, 27527), (Start: 21 @27572 has 19 MA's), (58, 27701), (71, 27782), (88, 27851), (106, 27935), (115, 27992), (133, 28070), (146, 28139), (147, 28142), (168, 28217), (175, 28244), (177, 28250), (195, 28334), (199, 28349), (209, 28400), (223, 28448), (231, 28511),

Gene: Graynor_44 Start: 27566, Stop: 28513, Start Num: 46

Candidate Starts for Graynor_44:

(Start: 46 @27566 has 89 MA's), (70, 27710), (71, 27713), (73, 27728), (79, 27755), (94, 27818), (98, 27833), (106, 27881), (112, 27926), (115, 27938), (118, 27962), (146, 28088), (150, 28097), (166, 28157), (167, 28160), (201, 28304), (219, 28364), (231, 28439), (232, 28442), (236, 28469), (237, 28472),

Gene: GreenHearts_42 Start: 28250, Stop: 29197, Start Num: 46

Candidate Starts for GreenHearts_42:

(Start: 46 @28250 has 89 MA's), (71, 28397), (79, 28439), (93, 28499), (97, 28514), (111, 28595), (112, 28610), (115, 28622), (146, 28772), (166, 28841), (167, 28844), (225, 29078), (231, 29123), (232, 29126), (236, 29153), (237, 29156),

Gene: Greenbelt_64 Start: 43465, Stop: 42455, Start Num: 46

Candidate Starts for Greenbelt_64:

(Start: 46 @43465 has 89 MA's), (Start: 53 @43441 has 1 MA's), (80, 43288), (106, 43162), (107, 43159), (113, 43114), (133, 43003), (139, 42967), (159, 42892), (160, 42880), (173, 42817), (206, 42676), (215, 42643), (226, 42595), (229, 42562), (230, 42556), (234, 42532), (238, 42511),

Gene: Greenhouse_43 Start: 28175, Stop: 29122, Start Num: 46

Candidate Starts for Greenhouse_43:

(Start: 46 @28175 has 89 MA's), (71, 28322), (79, 28364), (97, 28439), (111, 28520), (112, 28535), (115, 28547), (146, 28697), (166, 28766), (167, 28769), (225, 29003), (231, 29048), (232, 29051), (236, 29078), (237, 29081),

Gene: Gumball_57 Start: 43615, Stop: 44745, Start Num: 56

Candidate Starts for Gumball_57:

(30, 43522), (38, 43549), (40, 43552), (Start: 46 @43567 has 89 MA's), (Start: 56 @43615 has 3 MA's), (60, 43654), (62, 43666), (83, 43765), (97, 43828), (106, 43882), (113, 43930), (124, 43996), (153, 44110), (159, 44137), (163, 44167), (173, 44212), (198, 44446), (212, 44512), (215, 44521), (218, 44530), (240, 44656), (250, 44737),

Gene: Hawkeye_60 Start: 42876, Stop: 44036, Start Num: 46

Candidate Starts for Hawkeye_60:

(36, 42849), (Start: 46 @42876 has 89 MA's), (60, 42963), (83, 43074), (106, 43191), (110, 43212), (132, 43332), (157, 43440), (159, 43446), (160, 43458), (173, 43521), (185, 43638), (191, 43695), (212, 43803), (215, 43812), (217, 43818), (218, 43821),

Gene: HeadNerd_39 Start: 26287, Stop: 27234, Start Num: 46

Candidate Starts for HeadNerd_39:

(Start: 46 @26287 has 89 MA's), (68, 26419), (70, 26431), (71, 26434), (76, 26458), (98, 26554), (106, 26602), (115, 26659), (131, 26731), (167, 26881), (169, 26890), (219, 27085), (231, 27160), (232, 27163), (236, 27190), (237, 27193),

Gene: Helpful_60 Start: 43436, Stop: 44614, Start Num: 46

Candidate Starts for Helpful_60:

(4, 43154), (13, 43247), (Start: 46 @43436 has 89 MA's), (Start: 56 @43484 has 3 MA's), (60, 43523), (62, 43535), (83, 43634), (97, 43697), (106, 43751), (113, 43799), (124, 43865), (153, 43979), (159, 44006), (163, 44036), (173, 44081), (198, 44315), (212, 44381), (215, 44390), (218, 44399), (240, 44525), (250, 44606),

Gene: Henoccus_51 Start: 35844, Stop: 36851, Start Num: 41

Candidate Starts for Henoccus_51:

(5, 35607), (16, 35757), (Start: 41 @35844 has 11 MA's), (71, 36009), (77, 36039), (84, 36075), (100, 36150), (104, 36183), (109, 36207), (117, 36267), (128, 36297), (133, 36315), (134, 36318), (139, 36351), (147, 36387), (169, 36477), (183, 36573), (209, 36672), (212, 36684), (236, 36795), (243, 36828),

Gene: Herb_39 Start: 27510, Stop: 28463, Start Num: 48

Candidate Starts for Herb_39:

(Start: 48 @27510 has 17 MA's), (57, 27567), (71, 27657), (74, 27675), (95, 27765), (104, 27816), (111, 27855), (112, 27870), (116, 27888), (117, 27900), (129, 27948), (156, 28065), (166, 28104), (169, 28116), (219, 28314), (231, 28389), (236, 28419), (237, 28422),

Gene: Hiyaa_41 Start: 29720, Stop: 30685, Start Num: 35

Candidate Starts for Hiyaa_41:

(Start: 35 @29720 has 2 MA's), (55, 29783), (68, 29882), (75, 29918), (89, 29957), (105, 30020), (106, 30026), (129, 30149), (134, 30167), (136, 30191), (166, 30302), (188, 30419), (199, 30458), (212, 30521),

Gene: Htur_43 Start: 27973, Stop: 28986, Start Num: 21

Candidate Starts for Htur_43:

(Start: 21 @27973 has 19 MA's), (71, 28183), (88, 28252), (106, 28336), (116, 28399), (133, 28471), (134, 28474), (146, 28540), (147, 28543), (175, 28645), (177, 28651), (195, 28735), (199, 28750), (209, 28801), (223, 28849), (231, 28912),

Gene: Huckleberry_39 Start: 26270, Stop: 27217, Start Num: 46

Candidate Starts for Huckleberry_39:

(Start: 46 @26270 has 89 MA's), (68, 26402), (70, 26414), (71, 26417), (76, 26441), (98, 26537), (106, 26585), (115, 26642), (131, 26714), (133, 26723), (167, 26864), (169, 26873), (192, 26960), (219, 27068), (231, 27143), (232, 27146), (236, 27173), (237, 27176),

Gene: HunterDalle_39 Start: 27432, Stop: 28382, Start Num: 48

Candidate Starts for HunterDalle_39:

(25, 27378), (Start: 48 @27432 has 17 MA's), (71, 27579), (74, 27597), (95, 27687), (104, 27738), (111, 27777), (112, 27792), (116, 27810), (117, 27822), (129, 27870), (156, 27987), (166, 28026), (169, 28038), (192, 28125), (201, 28173), (219, 28233), (231, 28308), (232, 28311), (236, 28338), (237, 28341),

Gene: Huntingdon_41 Start: 27893, Stop: 28828, Start Num: 46

Candidate Starts for Huntingdon_41:

(Start: 46 @27893 has 89 MA's), (71, 28040), (74, 28058), (79, 28082), (97, 28157), (106, 28208), (111, 28238), (112, 28253), (115, 28265), (146, 28415), (166, 28484), (167, 28487), (199, 28598), (231, 28754), (232, 28757), (236, 28784), (237, 28787),

Gene: Immaculata_41 Start: 27533, Stop: 28480, Start Num: 46

Candidate Starts for Immaculata_41:

(Start: 46 @27533 has 89 MA's), (59, 27602), (68, 27665), (70, 27677), (71, 27680), (76, 27704), (98, 27800), (106, 27848), (111, 27878), (115, 27905), (131, 27977), (167, 28127), (169, 28136), (192, 28223), (201, 28271), (219, 28331), (231, 28406), (232, 28409), (236, 28436), (237, 28439),

Gene: IndiRoo_43 Start: 26273, Stop: 27280, Start Num: 21

Candidate Starts for IndiRoo_43:

(Start: 21 @26273 has 19 MA's), (71, 26483), (106, 26630), (147, 26837), (168, 26912), (175, 26939), (177, 26945), (195, 27029), (199, 27044), (231, 27206),

Gene: Intolerant_48 Start: 35879, Stop: 36877, Start Num: 41

Candidate Starts for Intolerant_48:

(3, 35486), (5, 35642), (12, 35720), (Start: 39 @35873 has 1 MA's), (Start: 41 @35879 has 11 MA's), (71, 36044), (76, 36068), (100, 36176), (104, 36209), (109, 36233), (117, 36293), (128, 36323), (130, 36329), (133, 36341), (134, 36344), (139, 36377), (147, 36413), (169, 36503), (183, 36599), (209, 36698), (212, 36710), (243, 36854),

Gene: JackieB_51 Start: 35683, Stop: 36690, Start Num: 41

Candidate Starts for JackieB_51:

(5, 35446), (16, 35596), (Start: 41 @35683 has 11 MA's), (71, 35848), (77, 35878), (84, 35914), (100, 35989), (104, 36022), (109, 36046), (117, 36106), (128, 36136), (133, 36154), (134, 36157), (139, 36190), (147, 36226), (169, 36316), (183, 36412), (209, 36511), (212, 36523), (231, 36601), (236, 36634), (243, 36667),

Gene: Jera_43 Start: 26765, Stop: 27778, Start Num: 21

Candidate Starts for Jera_43:

(Start: 21 @26765 has 19 MA's), (58, 26894), (71, 26975), (88, 27044), (106, 27128), (120, 27212), (133, 27263), (146, 27332), (147, 27335), (175, 27437), (177, 27443), (195, 27527), (199, 27542), (223, 27641), (231, 27704),

Gene: Joann_42 Start: 28143, Stop: 29078, Start Num: 46

Candidate Starts for Joann_42:

(Start: 46 @28143 has 89 MA's), (71, 28290), (74, 28308), (79, 28332), (97, 28407), (111, 28488), (112, 28503), (115, 28515), (166, 28734), (167, 28737), (219, 28929), (225, 28959), (231, 29004), (232, 29007), (236, 29034), (237, 29037),

Gene: Johann_43 Start: 27572, Stop: 28585, Start Num: 21

Candidate Starts for Johann_43:

(15, 27527), (Start: 21 @27572 has 19 MA's), (58, 27701), (71, 27782), (88, 27851), (106, 27935), (115, 27992), (133, 28070), (146, 28139), (147, 28142), (168, 28217), (175, 28244), (177, 28250), (195, 28334), (199, 28349), (209, 28400), (223, 28448), (231, 28511),

Gene: Jumboset_42 Start: 27650, Stop: 28597, Start Num: 46

Candidate Starts for Jumboset_42:

(Start: 46 @27650 has 89 MA's), (68, 27782), (70, 27794), (71, 27797), (76, 27821), (98, 27917), (106, 27965), (111, 27995), (115, 28022), (131, 28094), (167, 28244), (169, 28253), (192, 28340), (201, 28388), (219, 28448), (231, 28523), (232, 28526), (236, 28553), (237, 28556),

Gene: KSunshine22_97 Start: 80248, Stop: 81219, Start Num: 34

Candidate Starts for KSunshine22_97:

(Start: 34 @80248 has 9 MA's), (44, 80272), (Start: 51 @80293 has 4 MA's), (61, 80368), (67, 80407), (104, 80581), (108, 80596), (118, 80671), (127, 80698), (128, 80701), (134, 80722), (144, 80785), (152, 80806), (155, 80821), (158, 80833), (202, 80998), (208, 81019), (229, 81118), (231, 81127), (236, 81157),

Gene: Kalizoi_41 Start: 27475, Stop: 28422, Start Num: 46

Candidate Starts for Kalizoi_41:

(Start: 46 @27475 has 89 MA's), (59, 27544), (68, 27607), (70, 27619), (71, 27622), (76, 27646), (98, 27742), (106, 27790), (111, 27820), (115, 27847), (131, 27919), (167, 28069), (169, 28078), (192, 28165), (201, 28213), (219, 28273), (231, 28348), (232, 28351), (236, 28378), (237, 28381),

Gene: KandZ_56 Start: 43281, Stop: 44411, Start Num: 56

Candidate Starts for KandZ_56:

(Start: 46 @43233 has 89 MA's), (Start: 56 @43281 has 3 MA's), (60, 43320), (62, 43332), (83, 43431), (97, 43494), (106, 43548), (113, 43596), (124, 43662), (153, 43776), (159, 43803), (163, 43833), (173, 43878), (198, 44112), (212, 44178), (215, 44187), (218, 44196), (240, 44322), (250, 44403),

Gene: Keanu_40 Start: 29418, Stop: 30383, Start Num: 33

Candidate Starts for Keanu_40:

(Start: 33 @29418 has 2 MA's), (68, 29580), (75, 29616), (76, 29619), (89, 29655), (105, 29718), (106, 29724), (129, 29847), (134, 29865), (136, 29889), (141, 29919), (164, 29988), (166, 30000), (179, 30060), (188, 30117), (199, 30156), (212, 30219),

Gene: KingBob_39 Start: 27511, Stop: 28464, Start Num: 48

Candidate Starts for KingBob_39:

(Start: 48 @27511 has 17 MA's), (57, 27568), (71, 27658), (74, 27676), (95, 27766), (104, 27817), (111, 27856), (112, 27871), (116, 27889), (117, 27901), (129, 27949), (156, 28066), (166, 28105), (169, 28117), (219, 28315), (231, 28390), (236, 28420), (237, 28423),

Gene: Kittykat_40 Start: 26532, Stop: 27479, Start Num: 46

Candidate Starts for Kittykat_40:

(Start: 46 @26532 has 89 MA's), (59, 26601), (68, 26664), (70, 26676), (71, 26679), (76, 26703), (98, 26799), (106, 26847), (115, 26904), (131, 26976), (201, 27270), (219, 27330), (231, 27405), (232, 27408), (236, 27435), (237, 27438),

Gene: Kokushibo_42 Start: 29670, Stop: 30635, Start Num: 35

Candidate Starts for Kokushibo_42:

(Start: 35 @29670 has 2 MA's), (55, 29733), (68, 29832), (75, 29868), (89, 29907), (105, 29970), (106, 29976), (129, 30099), (134, 30117), (136, 30141), (142, 30174), (166, 30252), (188, 30369), (199, 30408), (212, 30471),

Gene: Korra_41 Start: 27487, Stop: 28434, Start Num: 46

Candidate Starts for Korra_41:

(Start: 46 @27487 has 89 MA's), (68, 27619), (70, 27631), (71, 27634), (76, 27658), (98, 27754), (106, 27802), (111, 27832), (115, 27859), (131, 27931), (167, 28081), (169, 28090), (192, 28177), (201, 28225), (219, 28285), (231, 28360), (232, 28363), (236, 28390), (237, 28393),

Gene: Labella_45 Start: 27803, Stop: 28816, Start Num: 21

Candidate Starts for Labella_45:

(Start: 21 @27803 has 19 MA's), (58, 27932), (71, 28013), (88, 28082), (106, 28166), (120, 28250), (133, 28301), (146, 28370), (147, 28373), (175, 28475), (177, 28481), (195, 28565), (199, 28580), (209, 28631), (223, 28679), (231, 28742),

Gene: Lakshmi_42 Start: 28138, Stop: 29085, Start Num: 46

Candidate Starts for Lakshmi_42:

(Start: 46 @28138 has 89 MA's), (71, 28285), (79, 28327), (97, 28402), (111, 28483), (112, 28498), (115, 28510), (146, 28660), (166, 28729), (167, 28732), (225, 28966), (231, 29011), (232, 29014), (236, 29041), (237, 29044),

Gene: Lasagna_38 Start: 26108, Stop: 27058, Start Num: 46

Candidate Starts for Lasagna_38:

(Start: 46 @26108 has 89 MA's), (68, 26240), (70, 26252), (71, 26255), (76, 26279), (98, 26375), (106, 26423), (109, 26438), (115, 26480), (118, 26504), (131, 26552), (162, 26678), (166, 26702), (167, 26705), (169, 26714), (201, 26849), (219, 26909), (231, 26984), (236, 27014), (237, 27017),

Gene: LastNadiia_39 Start: 26882, Stop: 25941, Start Num: 47

Candidate Starts for LastNadiia_39:

(Start: 47 @26882 has 7 MA's), (63, 26777), (84, 26681), (149, 26366), (154, 26345), (172, 26279), (202, 26174), (220, 26117), (229, 26054), (231, 26045), (242, 25991),

Gene: Laure_107 Start: 76210, Stop: 77187, Start Num: 34

Candidate Starts for Laure_107:

(Start: 34 @76210 has 9 MA's), (44, 76234), (Start: 51 @76255 has 4 MA's), (65, 76354), (78, 76426), (108, 76558), (109, 76567), (128, 76663), (134, 76684), (144, 76747), (152, 76768), (155, 76783), (158, 76795), (194, 76915), (202, 76960), (208, 76981), (231, 77089), (236, 77119), (239, 77131),

Gene: LazerLemon_51 Start: 36312, Stop: 37310, Start Num: 41

Candidate Starts for LazerLemon_51:

(5, 36060), (10, 36087), (11, 36132), (12, 36135), (Start: 41 @36312 has 11 MA's), (71, 36477), (79, 36519), (100, 36609), (104, 36642), (109, 36666), (128, 36756), (133, 36774), (134, 36777), (147, 36846), (169, 36936), (178, 36975), (183, 37032), (212, 37143), (235, 37248), (243, 37287),

Gene: Lennox_39 Start: 26316, Stop: 27266, Start Num: 46

Candidate Starts for Lennox_39:

(Start: 46 @26316 has 89 MA's), (68, 26448), (70, 26460), (71, 26463), (76, 26487), (98, 26583), (106, 26631), (109, 26646), (115, 26688), (118, 26712), (129, 26754), (131, 26760), (162, 26886), (166, 26910), (167, 26913), (169, 26922), (201, 27057), (219, 27117), (231, 27192), (236, 27222), (237, 27225),

Gene: LeoJr_102 Start: 83555, Stop: 84526, Start Num: 34

Candidate Starts for LeoJr_102:

(Start: 34 @83555 has 9 MA's), (44, 83579), (Start: 51 @83600 has 4 MA's), (67, 83714), (104, 83888), (108, 83903), (118, 83978), (127, 84005), (128, 84008), (132, 84023), (144, 84092), (152, 84113), (155, 84128), (158, 84140), (194, 84260), (199, 84281), (202, 84305), (208, 84326), (229, 84425), (231, 84434),

Gene: LilStuart_39 Start: 26319, Stop: 27269, Start Num: 46

Candidate Starts for LilStuart_39:

(Start: 46 @26319 has 89 MA's), (68, 26451), (70, 26463), (71, 26466), (76, 26490), (98, 26586), (106, 26634), (115, 26691), (118, 26715), (129, 26757), (131, 26763), (162, 26889), (166, 26913), (167, 26916), (169, 26925), (201, 27060), (219, 27120), (231, 27195), (236, 27225), (237, 27228),

Gene: LilyPad_56 Start: 41683, Stop: 42828, Start Num: 47

Candidate Starts for LilyPad_56:

(Start: 47 @41683 has 7 MA's), (50, 41692), (69, 41818), (71, 41830), (109, 42007), (133, 42112), (169, 42286), (172, 42298), (186, 42430), (191, 42478), (193, 42499), (195, 42508), (196, 42514), (200, 42532), (201, 42544), (210, 42577), (214, 42592), (215, 42595), (217, 42601), (227, 42646), (236, 42712), (238, 42724),

Gene: Linayshia_43 Start: 27941, Stop: 28954, Start Num: 21

Candidate Starts for Linayshia_43:

(Start: 21 @27941 has 19 MA's), (71, 28151), (88, 28220), (106, 28304), (116, 28367), (133, 28439), (134, 28442), (146, 28508), (147, 28511), (175, 28613), (177, 28619), (195, 28703), (199, 28718), (209, 28769), (223, 28817), (231, 28880),

Gene: Litotes_41 Start: 27533, Stop: 28480, Start Num: 46

Candidate Starts for Litotes_41:

(Start: 46 @27533 has 89 MA's), (70, 27677), (71, 27680), (73, 27695), (79, 27722), (94, 27785), (106, 27848), (112, 27893), (115, 27905), (118, 27929), (146, 28055), (166, 28124), (167, 28127), (192, 28223), (201, 28271), (219, 28331), (231, 28406), (236, 28436), (237, 28439),

Gene: LittleFella_61 Start: 43303, Stop: 44364, Start Num: 46

Candidate Starts for LittleFella_61:

(Start: 46 @43303 has 89 MA's), (Start: 47 @43309 has 7 MA's), (50, 43318), (60, 43387), (83, 43528), (84, 43531), (109, 43663), (113, 43696), (132, 43765), (152, 43852), (174, 43960), (210, 44113), (214,

44128), (215, 44131), (221, 44152), (236, 44248), (238, 44260), (247, 44323), (249, 44341),

Gene: Lizz_66 Start: 47161, Stop: 46163, Start Num: 45

Candidate Starts for Lizz_66:

(28, 47212), (Start: 45 @47161 has 7 MA's), (Start: 53 @47149 has 1 MA's), (106, 46870), (107, 46867), (125, 46738), (133, 46711), (139, 46675), (159, 46600), (160, 46588), (173, 46525), (206, 46384), (215, 46351), (218, 46342), (229, 46270), (230, 46264), (244, 46180),

Gene: Lucy_39 Start: 26316, Stop: 27266, Start Num: 46

Candidate Starts for Lucy_39:

(Start: 46 @26316 has 89 MA's), (68, 26448), (70, 26460), (71, 26463), (76, 26487), (98, 26583), (106, 26631), (109, 26646), (115, 26688), (118, 26712), (129, 26754), (131, 26760), (162, 26886), (166, 26910), (167, 26913), (169, 26922), (201, 27057), (219, 27117), (231, 27192), (236, 27222), (237, 27225),

Gene: Madi_54 Start: 40504, Stop: 41709, Start Num: 27

Candidate Starts for Madi_54:

(Start: 27 @40504 has 4 MA's), (Start: 47 @40564 has 7 MA's), (50, 40573), (71, 40711), (80, 40735), (109, 40888), (113, 40921), (169, 41167), (170, 41170), (171, 41176), (175, 41191), (186, 41311), (191, 41359), (195, 41389), (196, 41395), (201, 41425), (210, 41458), (215, 41476), (217, 41482), (231, 41563), (236, 41593), (238, 41605), (247, 41668),

Gene: Makima_37 Start: 25998, Stop: 25066, Start Num: 47

Candidate Starts for Makima_37:

(Start: 47 @25998 has 7 MA's), (63, 25902), (104, 25698), (115, 25632), (149, 25491), (154, 25470), (172, 25404), (202, 25299), (220, 25242), (223, 25233), (224, 25230), (229, 25179), (231, 25170), (242, 25116),

Gene: Makoto_39 Start: 26327, Stop: 27277, Start Num: 46

Candidate Starts for Makoto_39:

(Start: 46 @26327 has 89 MA's), (68, 26459), (70, 26471), (71, 26474), (76, 26498), (98, 26594), (106, 26642), (109, 26657), (115, 26699), (118, 26723), (129, 26765), (131, 26771), (162, 26897), (166, 26921), (167, 26924), (169, 26933), (201, 27068), (219, 27128), (231, 27203), (236, 27233), (237, 27236),

Gene: MamaPearl_40 Start: 27489, Stop: 28439, Start Num: 46

Candidate Starts for MamaPearl_40:

(Start: 46 @27489 has 89 MA's), (68, 27621), (71, 27636), (73, 27651), (76, 27660), (98, 27756), (106, 27804), (109, 27819), (115, 27861), (118, 27885), (131, 27933), (133, 27942), (162, 28059), (167, 28086), (169, 28095), (219, 28290), (223, 28302), (231, 28365), (232, 28368), (236, 28395), (237, 28398),

Gene: Mareelih_165 Start: 94021, Stop: 93029, Start Num: 32

Candidate Starts for Mareelih_165:

(26, 94045), (Start: 32 @94021 has 4 MA's), (58, 93919), (69, 93847), (104, 93694), (118, 93604), (142, 93496), (145, 93487), (154, 93457), (155, 93454), (157, 93445), (166, 93400), (172, 93376), (199, 93295), (201, 93274), (212, 93232), (231, 93145), (232, 93142), (236, 93115), (245, 93052), (246, 93049),

Gene: Maria1952_38 Start: 27510, Stop: 28463, Start Num: 48

Candidate Starts for Maria1952_38:

(Start: 48 @27510 has 17 MA's), (57, 27567), (71, 27657), (74, 27675), (95, 27765), (104, 27816), (111, 27855), (112, 27870), (116, 27888), (117, 27900), (129, 27948), (156, 28065), (166, 28104),

(169, 28116), (219, 28314), (231, 28389), (236, 28419), (237, 28422),

Gene: Marky_53 Start: 36621, Stop: 37619, Start Num: 41

Candidate Starts for Marky_53:

(7, 36390), (20, 36564), (Start: 41 @36621 has 11 MA's), (71, 36786), (81, 36831), (91, 36867), (100, 36918), (104, 36951), (130, 37071), (134, 37086), (136, 37110), (143, 37146), (169, 37263), (181, 37311), (210, 37437), (212, 37446), (234, 37548), (243, 37590),

Gene: MeganNoll_41 Start: 27707, Stop: 28654, Start Num: 46

Candidate Starts for MeganNoll_41:

(Start: 46 @27707 has 89 MA's), (68, 27839), (70, 27851), (71, 27854), (76, 27878), (98, 27974), (106, 28022), (111, 28052), (115, 28079), (131, 28151), (167, 28301), (169, 28310), (192, 28397), (201, 28445), (219, 28505), (231, 28580), (236, 28610), (237, 28613),

Gene: Microdon_49 Start: 35690, Stop: 36691, Start Num: 41

Candidate Starts for Microdon_49:

(5, 35453), (6, 35459), (10, 35480), (12, 35531), (Start: 41 @35690 has 11 MA's), (71, 35855), (74, 35873), (76, 35879), (100, 35990), (104, 36023), (109, 36047), (110, 36053), (117, 36107), (128, 36137), (130, 36143), (133, 36155), (134, 36158), (139, 36191), (147, 36227), (169, 36317), (183, 36413), (202, 36485), (212, 36524), (234, 36626), (243, 36668),

Gene: Milani_41 Start: 26576, Stop: 27577, Start Num: 21

Candidate Starts for Milani_41:

(Start: 21 @26576 has 19 MA's), (58, 26705), (71, 26786), (77, 26816), (106, 26927), (147, 27134), (152, 27146), (175, 27236), (177, 27242), (195, 27326), (199, 27341), (209, 27392), (231, 27503),

Gene: Mimi_103 Start: 82842, Stop: 83813, Start Num: 34

Candidate Starts for Mimi_103:

(Start: 34 @82842 has 9 MA's), (44, 82866), (Start: 51 @82887 has 4 MA's), (65, 82986), (67, 83001), (71, 83025), (78, 83058), (104, 83175), (108, 83190), (125, 83286), (128, 83295), (152, 83400), (155, 83415), (157, 83424), (175, 83499), (192, 83541), (202, 83592), (208, 83613), (231, 83721), (236, 83751),

Gene: Mireles_40 Start: 25556, Stop: 24624, Start Num: 47

Candidate Starts for Mireles_40:

(Start: 47 @25556 has 7 MA's), (63, 25460), (67, 25436), (104, 25256), (115, 25190), (125, 25151), (135, 25100), (149, 25049), (154, 25028), (161, 25004), (172, 24962), (202, 24857), (220, 24800), (223, 24791), (224, 24788), (229, 24737), (231, 24728), (242, 24674),

Gene: Misaeng_41 Start: 28126, Stop: 29073, Start Num: 46

Candidate Starts for Misaeng_41:

(Start: 46 @28126 has 89 MA's), (71, 28273), (74, 28291), (79, 28315), (91, 28351), (97, 28390), (106, 28441), (111, 28471), (112, 28486), (115, 28498), (146, 28648), (166, 28717), (167, 28720), (225, 28954), (231, 28999), (232, 29002), (236, 29029), (237, 29032),

Gene: Moki_39 Start: 26432, Stop: 27379, Start Num: 46

Candidate Starts for Moki_39:

(Start: 46 @26432 has 89 MA's), (68, 26564), (70, 26576), (71, 26579), (76, 26603), (98, 26699), (106, 26747), (115, 26804), (131, 26876), (133, 26885), (167, 27026), (169, 27035), (192, 27122), (219, 27230), (231, 27305), (232, 27308), (236, 27335), (237, 27338),

Gene: Mopey_58 Start: 43111, Stop: 44289, Start Num: 46

Candidate Starts for Mopey_58:

(4, 42829), (9, 42859), (13, 42922), (Start: 46 @43111 has 89 MA's), (Start: 56 @43159 has 3 MA's), (60, 43198), (62, 43210), (83, 43309), (97, 43372), (106, 43426), (113, 43474), (124, 43540), (153, 43654), (159, 43681), (163, 43711), (173, 43756), (198, 43990), (212, 44056), (215, 44065), (218, 44074), (240, 44200), (250, 44281),

Gene: MrBoss_43 Start: 27530, Stop: 28477, Start Num: 46

Candidate Starts for MrBoss_43:

(Start: 46 @27530 has 89 MA's), (70, 27674), (71, 27677), (73, 27692), (79, 27719), (94, 27782), (98, 27797), (106, 27845), (112, 27890), (115, 27902), (118, 27926), (146, 28052), (166, 28121), (167, 28124), (201, 28268), (219, 28328), (231, 28403), (232, 28406), (236, 28433), (237, 28436),

Gene: MrGloopy_42 Start: 27636, Stop: 28583, Start Num: 46

Candidate Starts for MrGloopy_42:

(Start: 46 @27636 has 89 MA's), (68, 27768), (70, 27780), (71, 27783), (76, 27807), (98, 27903), (106, 27951), (111, 27981), (115, 28008), (131, 28080), (167, 28230), (169, 28239), (192, 28326), (201, 28374), (219, 28434), (231, 28509), (232, 28512), (236, 28539), (237, 28542),

Gene: Nancia_39 Start: 26343, Stop: 27293, Start Num: 46

Candidate Starts for Nancia_39:

(Start: 46 @26343 has 89 MA's), (55, 26376), (59, 26412), (68, 26475), (70, 26487), (71, 26490), (76, 26514), (98, 26610), (106, 26658), (109, 26673), (115, 26715), (118, 26739), (131, 26787), (162, 26913), (166, 26937), (167, 26940), (169, 26949), (201, 27084), (219, 27144), (231, 27219), (232, 27222), (236, 27249), (237, 27252),

Gene: Neuville_37 Start: 24528, Stop: 23596, Start Num: 47

Candidate Starts for Neuville_37:

(Start: 47 @24528 has 7 MA's), (73, 24369), (87, 24324), (115, 24162), (125, 24123), (149, 24021), (154, 24000), (162, 23973), (172, 23934), (194, 23874), (202, 23829), (220, 23772), (223, 23763), (224, 23760), (229, 23709), (231, 23700), (239, 23658), (242, 23646),

Gene: Nova_56 Start: 43563, Stop: 44741, Start Num: 46

Candidate Starts for Nova_56:

(4, 43281), (9, 43311), (24, 43497), (Start: 46 @43563 has 89 MA's), (Start: 56 @43611 has 3 MA's), (60, 43650), (62, 43662), (83, 43761), (97, 43824), (106, 43878), (113, 43926), (124, 43992), (153, 44106), (159, 44133), (163, 44163), (173, 44208), (198, 44442), (212, 44508), (215, 44517), (218, 44526), (240, 44652), (250, 44733),

Gene: Nubia_42 Start: 28083, Stop: 29030, Start Num: 46

Candidate Starts for Nubia_42:

(Start: 46 @28083 has 89 MA's), (71, 28230), (79, 28272), (97, 28347), (111, 28428), (112, 28443), (115, 28455), (146, 28605), (166, 28674), (167, 28677), (225, 28911), (231, 28956), (232, 28959), (236, 28986), (237, 28989),

Gene: OMalley_39 Start: 27504, Stop: 28451, Start Num: 48

Candidate Starts for OMalley_39:

(Start: 48 @27504 has 17 MA's), (58, 27570), (74, 27669), (79, 27693), (95, 27759), (104, 27807), (109, 27831), (112, 27861), (116, 27879), (117, 27891), (127, 27933), (162, 28071), (166, 28092), (167, 28095), (219, 28302), (231, 28377), (232, 28380), (236, 28407), (237, 28410),

Gene: Olympi_44 Start: 27608, Stop: 28621, Start Num: 21

Candidate Starts for Olympi_44:

(Start: 21 @27608 has 19 MA's), (58, 27737), (71, 27818), (88, 27887), (106, 27971), (120, 28055), (133, 28106), (146, 28175), (147, 28178), (175, 28280), (177, 28286), (195, 28370), (199, 28385),

(209, 28436), (223, 28484), (231, 28547),

Gene: OurGirlNessie_38 Start: 26071, Stop: 27021, Start Num: 46

Candidate Starts for OurGirlNessie_38:

(Start: 46 @26071 has 89 MA's), (68, 26203), (70, 26215), (71, 26218), (76, 26242), (98, 26338), (106, 26386), (109, 26401), (115, 26443), (118, 26467), (131, 26515), (162, 26641), (166, 26665), (167, 26668), (169, 26677), (201, 26812), (219, 26872), (231, 26947), (236, 26977), (237, 26980),

Gene: Oxynfrius_42 Start: 28104, Stop: 29051, Start Num: 46

Candidate Starts for Oxynfrius_42:

(Start: 46 @28104 has 89 MA's), (71, 28251), (79, 28293), (97, 28368), (111, 28449), (112, 28464), (115, 28476), (146, 28626), (166, 28695), (167, 28698), (225, 28932), (231, 28977), (232, 28980), (236, 29007), (237, 29010),

Gene: PBI1_54 Start: 43038, Stop: 44216, Start Num: 46

Candidate Starts for PBI1_54:

(4, 42756), (9, 42786), (13, 42849), (Start: 46 @43038 has 89 MA's), (Start: 56 @43086 has 3 MA's), (60, 43125), (62, 43137), (83, 43236), (97, 43299), (106, 43353), (113, 43401), (124, 43467), (153, 43581), (159, 43608), (163, 43638), (173, 43683), (198, 43917), (212, 43983), (215, 43992), (218, 44001), (240, 44127), (250, 44208),

Gene: PHTowN_66 Start: 47159, Stop: 46161, Start Num: 45

Candidate Starts for PHTowN_66:

(28, 47210), (Start: 45 @47159 has 7 MA's), (Start: 53 @47147 has 1 MA's), (106, 46868), (107, 46865), (125, 46736), (133, 46709), (139, 46673), (159, 46598), (160, 46586), (173, 46523), (206, 46382), (215, 46349), (218, 46340), (229, 46268), (230, 46262), (244, 46178),

Gene: PLOT_57 Start: 43090, Stop: 44268, Start Num: 46

Candidate Starts for PLOT_57:

(4, 42808), (13, 42901), (Start: 46 @43090 has 89 MA's), (Start: 56 @43138 has 3 MA's), (60, 43177), (62, 43189), (83, 43288), (97, 43351), (106, 43405), (113, 43453), (124, 43519), (153, 43633), (159, 43660), (163, 43690), (173, 43735), (198, 43969), (212, 44035), (215, 44044), (218, 44053), (240, 44179), (250, 44260),

Gene: Panchaali_94 Start: 80207, Stop: 81178, Start Num: 34

Candidate Starts for Panchaali_94:

(Start: 34 @80207 has 9 MA's), (44, 80231), (Start: 51 @80252 has 4 MA's), (61, 80327), (67, 80366), (104, 80540), (108, 80555), (118, 80630), (127, 80657), (128, 80660), (132, 80675), (134, 80681), (144, 80744), (152, 80765), (155, 80780), (158, 80792), (192, 80906), (202, 80957), (208, 80978), (229, 81077), (231, 81086), (236, 81116),

Gene: PartyCup_42 Start: 27759, Stop: 28706, Start Num: 46

Candidate Starts for PartyCup_42:

(Start: 46 @27759 has 89 MA's), (70, 27903), (71, 27906), (73, 27921), (79, 27948), (94, 28011), (98, 28026), (106, 28074), (112, 28119), (115, 28131), (118, 28155), (146, 28281), (166, 28350), (167, 28353), (201, 28497), (219, 28557), (231, 28632), (232, 28635), (236, 28662), (237, 28665),

Gene: Parvaparticeps_12 Start: 7767, Stop: 8726, Start Num: 43

Candidate Starts for Parvaparticeps_12:

(1, 7284), (2, 7317), (8, 7527), (43, 7767), (Start: 53 @7794 has 1 MA's), (Start: 54 @7797 has 2 MA's), (55, 7812), (57, 7836), (70, 7923), (84, 7983), (106, 8097), (118, 8178), (123, 8202), (129, 8220), (133, 8235), (134, 8238), (147, 8307), (162, 8352), (167, 8379), (195, 8475), (204, 8520), (223, 8589), (231, 8652), (234, 8673),

Gene: Patbob_102 Start: 83577, Stop: 84548, Start Num: 34

Candidate Starts for Patbob_102:

(Start: 34 @83577 has 9 MA's), (44, 83601), (Start: 51 @83622 has 4 MA's), (65, 83721), (67, 83736), (71, 83760), (78, 83793), (104, 83910), (108, 83925), (125, 84021), (128, 84030), (152, 84135), (155, 84150), (157, 84159), (175, 84234), (192, 84276), (202, 84327), (208, 84348), (229, 84447), (231, 84456), (236, 84486),

Gene: PauloDiaboli_113 Start: 76695, Stop: 75760, Start Num: 42

Candidate Starts for PauloDiaboli_113:

(Start: 42 @76695 has 6 MA's), (Start: 45 @76686 has 7 MA's), (63, 76578), (83, 76488), (99, 76437), (102, 76410), (104, 76398), (117, 76314), (120, 76308), (132, 76269), (157, 76152), (170, 76101), (207, 75969), (208, 75966), (209, 75960), (223, 75921), (232, 75855), (236, 75828),

Gene: Penelope2018_57 Start: 43108, Stop: 44286, Start Num: 46

Candidate Starts for Penelope2018_57:

(4, 42826), (13, 42919), (Start: 46 @43108 has 89 MA's), (Start: 56 @43156 has 3 MA's), (60, 43195), (62, 43207), (83, 43306), (97, 43369), (106, 43423), (113, 43471), (124, 43537), (153, 43651), (159, 43678), (163, 43708), (173, 43753), (198, 43987), (212, 44053), (215, 44062), (218, 44071), (240, 44197), (250, 44278),

Gene: PermaG_43 Start: 27639, Stop: 28652, Start Num: 21

Candidate Starts for PermaG_43:

(Start: 21 @27639 has 19 MA's), (58, 27768), (71, 27849), (106, 28002), (115, 28059), (133, 28137), (146, 28206), (147, 28209), (168, 28284), (175, 28311), (195, 28401), (199, 28416), (209, 28467), (231, 28578),

Gene: Phalaborwa_58 Start: 43258, Stop: 44436, Start Num: 46

Candidate Starts for Phalaborwa_58:

(Start: 46 @43258 has 89 MA's), (60, 43345), (62, 43357), (83, 43456), (97, 43519), (103, 43561), (106, 43573), (113, 43621), (124, 43687), (159, 43828), (160, 43840), (163, 43858), (173, 43903), (187, 44041), (190, 44083), (197, 44134), (198, 44137), (212, 44203), (215, 44212), (218, 44221), (240, 44347), (250, 44428),

Gene: Phendrix_170 Start: 90108, Stop: 89107, Start Num: 34

Candidate Starts for Phendrix_170:

(Start: 34 @90108 has 9 MA's), (40, 90096), (Start: 54 @90054 has 2 MA's), (Start: 56 @90033 has 3 MA's), (74, 89904), (104, 89781), (105, 89778), (108, 89766), (139, 89607), (145, 89574), (148, 89565), (157, 89532), (159, 89526), (167, 89487), (171, 89469), (172, 89466), (194, 89406), (201, 89364), (208, 89340), (210, 89331), (222, 89298), (231, 89235), (232, 89232), (236, 89205), (241, 89187),

Gene: Phrampa_96 Start: 84980, Stop: 85951, Start Num: 34

Candidate Starts for Phrampa_96:

(Start: 34 @84980 has 9 MA's), (44, 85004), (Start: 51 @85025 has 4 MA's), (65, 85124), (67, 85139), (71, 85163), (78, 85196), (104, 85313), (108, 85328), (118, 85403), (128, 85433), (134, 85454), (152, 85538), (155, 85553), (157, 85562), (158, 85565), (175, 85637), (192, 85679), (202, 85730), (208, 85751), (231, 85859), (236, 85889),

Gene: PinkFriday_39 Start: 26620, Stop: 27570, Start Num: 48

Candidate Starts for PinkFriday_39:

(Start: 48 @26620 has 17 MA's), (57, 26677), (71, 26767), (74, 26785), (95, 26875), (104, 26926), (111, 26965), (112, 26980), (116, 26998), (117, 27010), (129, 27058), (156, 27175), (166, 27214),

(169, 27226), (192, 27313), (201, 27361), (219, 27421), (231, 27496), (236, 27526), (237, 27529),

Gene: PitaDog_39 Start: 26328, Stop: 27278, Start Num: 46

Candidate Starts for PitaDog_39:

(Start: 46 @26328 has 89 MA's), (68, 26460), (70, 26472), (71, 26475), (76, 26499), (98, 26595), (106, 26643), (109, 26658), (115, 26700), (118, 26724), (129, 26766), (131, 26772), (162, 26898), (166, 26922), (167, 26925), (169, 26934), (201, 27069), (219, 27129), (231, 27204), (236, 27234), (237, 27237),

Gene: Potatoes_41 Start: 27534, Stop: 28481, Start Num: 46

Candidate Starts for Potatoes_41:

(Start: 46 @27534 has 89 MA's), (59, 27603), (68, 27666), (70, 27678), (71, 27681), (76, 27705), (98, 27801), (106, 27849), (111, 27879), (115, 27906), (131, 27978), (167, 28128), (169, 28137), (192, 28224), (201, 28272), (219, 28332), (231, 28407), (232, 28410), (236, 28437), (237, 28440),

Gene: Prager_57 Start: 43127, Stop: 44305, Start Num: 46

Candidate Starts for Prager_57:

(4, 42845), (9, 42875), (13, 42938), (Start: 46 @43127 has 89 MA's), (Start: 56 @43175 has 3 MA's), (60, 43214), (62, 43226), (83, 43325), (97, 43388), (106, 43442), (113, 43490), (124, 43556), (153, 43670), (159, 43697), (163, 43727), (173, 43772), (198, 44006), (212, 44072), (215, 44081), (218, 44090), (240, 44216), (250, 44297),

Gene: Preamble_39 Start: 26398, Stop: 27345, Start Num: 46

Candidate Starts for Preamble_39:

(Start: 46 @26398 has 89 MA's), (68, 26530), (70, 26542), (71, 26545), (76, 26569), (98, 26665), (106, 26713), (109, 26728), (115, 26770), (117, 26788), (127, 26830), (131, 26842), (201, 27136), (219, 27196), (231, 27271), (232, 27274), (236, 27301), (237, 27304),

Gene: Pterodactyl_39 Start: 26308, Stop: 27258, Start Num: 46

Candidate Starts for Pterodactyl_39:

(Start: 46 @26308 has 89 MA's), (68, 26440), (70, 26452), (71, 26455), (76, 26479), (98, 26575), (106, 26623), (109, 26638), (115, 26680), (118, 26704), (131, 26752), (162, 26878), (166, 26902), (167, 26905), (169, 26914), (201, 27049), (219, 27109), (231, 27184), (236, 27214), (237, 27217),

Gene: Pumancara_39 Start: 26532, Stop: 27482, Start Num: 48

Candidate Starts for Pumancara_39:

(Start: 48 @26532 has 17 MA's), (57, 26589), (71, 26679), (74, 26697), (95, 26787), (104, 26838), (111, 26877), (112, 26892), (116, 26910), (117, 26922), (129, 26970), (156, 27087), (169, 27138), (192, 27225), (201, 27273), (219, 27333), (231, 27408), (236, 27438), (237, 27441),

Gene: Pumpernickel_110 Start: 78248, Stop: 77310, Start Num: 42

Candidate Starts for Pumpernickel_110:

(Start: 42 @78248 has 6 MA's), (64, 78125), (72, 78077), (86, 78032), (99, 77990), (101, 77981), (102, 77963), (104, 77951), (117, 77867), (122, 77858), (125, 77846), (132, 77822), (150, 77735), (152, 77729), (157, 77705), (205, 77531), (208, 77519), (223, 77474), (236, 77381),

Gene: RAP15_42 Start: 27707, Stop: 28654, Start Num: 46

Candidate Starts for RAP15_42:

(Start: 46 @27707 has 89 MA's), (68, 27839), (70, 27851), (71, 27854), (76, 27878), (98, 27974), (106, 28022), (111, 28052), (115, 28079), (131, 28151), (167, 28301), (169, 28310), (192, 28397), (201, 28445), (219, 28505), (231, 28580), (236, 28610), (237, 28613),

Gene: Racecar_104 Start: 83495, Stop: 84466, Start Num: 34

Candidate Starts for Racecar_104:

(Start: 34 @83495 has 9 MA's), (44, 83519), (Start: 51 @83540 has 4 MA's), (65, 83639), (67, 83654), (71, 83678), (78, 83711), (104, 83828), (108, 83843), (125, 83939), (128, 83948), (152, 84053), (155, 84068), (157, 84077), (175, 84152), (192, 84194), (202, 84245), (208, 84266), (231, 84374), (236, 84404),

Gene: Rasovi_43 Start: 27973, Stop: 28986, Start Num: 21

Candidate Starts for Rasovi_43:

(Start: 21 @27973 has 19 MA's), (71, 28183), (88, 28252), (106, 28336), (116, 28399), (133, 28471), (134, 28474), (146, 28540), (147, 28543), (175, 28645), (177, 28651), (195, 28735), (199, 28750), (209, 28801), (223, 28849), (231, 28912),

Gene: RcigaStruga_41 Start: 27893, Stop: 28828, Start Num: 46

Candidate Starts for RcigaStruga_41:

(Start: 46 @27893 has 89 MA's), (71, 28040), (74, 28058), (79, 28082), (97, 28157), (106, 28208), (111, 28238), (112, 28253), (115, 28265), (146, 28415), (166, 28484), (167, 28487), (199, 28598), (231, 28754), (232, 28757), (236, 28784), (237, 28787),

Gene: ReginaGlobina_102 Start: 83120, Stop: 84091, Start Num: 34

Candidate Starts for ReginaGlobina_102:

(Start: 34 @83120 has 9 MA's), (44, 83144), (Start: 51 @83165 has 4 MA's), (67, 83279), (104, 83453), (108, 83468), (118, 83543), (127, 83570), (128, 83573), (132, 83588), (144, 83657), (152, 83678), (155, 83693), (158, 83705), (194, 83825), (199, 83846), (202, 83870), (208, 83891), (229, 83990), (231, 83999),

Gene: Riovina_39 Start: 27504, Stop: 28451, Start Num: 48

Candidate Starts for Riovina_39:

(Start: 48 @27504 has 17 MA's), (58, 27570), (74, 27669), (79, 27693), (95, 27759), (104, 27807), (109, 27831), (112, 27861), (116, 27879), (117, 27891), (127, 27933), (162, 28071), (166, 28092), (167, 28095), (219, 28302), (231, 28377), (232, 28380), (236, 28407), (237, 28410),

Gene: Riverdale_42 Start: 27672, Stop: 28619, Start Num: 46

Candidate Starts for Riverdale_42:

(Start: 46 @27672 has 89 MA's), (59, 27741), (68, 27804), (70, 27816), (71, 27819), (76, 27843), (98, 27939), (106, 27987), (111, 28017), (115, 28044), (131, 28116), (167, 28266), (169, 28275), (192, 28362), (201, 28410), (219, 28470), (231, 28545), (232, 28548), (236, 28575), (237, 28578),

Gene: Roberts_37 Start: 24528, Stop: 23596, Start Num: 47

Candidate Starts for Roberts_37:

(Start: 47 @24528 has 7 MA's), (73, 24369), (87, 24324), (115, 24162), (125, 24123), (149, 24021), (154, 24000), (162, 23973), (172, 23934), (194, 23874), (202, 23829), (220, 23772), (223, 23763), (224, 23760), (229, 23709), (231, 23700), (239, 23658), (242, 23646),

Gene: Rockabye_108 Start: 76731, Stop: 77705, Start Num: 34

Candidate Starts for Rockabye_108:

(Start: 34 @76731 has 9 MA's), (44, 76755), (Start: 51 @76776 has 4 MA's), (65, 76875), (78, 76947), (104, 77064), (108, 77079), (128, 77184), (152, 77289), (155, 77304), (159, 77319), (202, 77481), (208, 77502), (231, 77610), (236, 77640),

Gene: Rooney_66 Start: 47314, Stop: 46316, Start Num: 45

Candidate Starts for Rooney_66:

(Start: 45 @47314 has 7 MA's), (Start: 53 @47302 has 1 MA's), (106, 47023), (107, 47020), (125, 46891), (133, 46864), (139, 46828), (159, 46753), (160, 46741), (173, 46678), (198, 46579), (206,

46537), (215, 46504), (218, 46495), (229, 46423), (230, 46417), (244, 46333),

Gene: Rootkit7_42 Start: 27509, Stop: 28522, Start Num: 21

Candidate Starts for Rootkit7_42:

(Start: 21 @27509 has 19 MA's), (58, 27638), (71, 27719), (88, 27788), (106, 27872), (120, 27956), (133, 28007), (146, 28076), (147, 28079), (175, 28181), (177, 28187), (195, 28271), (199, 28286), (209, 28337), (223, 28385), (231, 28448),

Gene: Rozby_41 Start: 27464, Stop: 28411, Start Num: 46

Candidate Starts for Rozby_41:

(Start: 46 @27464 has 89 MA's), (59, 27533), (68, 27596), (70, 27608), (71, 27611), (76, 27635), (98, 27731), (106, 27779), (111, 27809), (115, 27836), (131, 27908), (167, 28058), (169, 28067), (192, 28154), (201, 28202), (219, 28262), (231, 28337), (232, 28340), (236, 28367), (237, 28370),

Gene: SBlackberry_42 Start: 27445, Stop: 28458, Start Num: 21

Candidate Starts for SBlackberry_42:

(15, 27400), (Start: 21 @27445 has 19 MA's), (71, 27655), (88, 27724), (106, 27808), (115, 27865), (133, 27943), (146, 28012), (147, 28015), (168, 28090), (175, 28117), (199, 28222), (209, 28273), (223, 28321), (231, 28384),

Gene: SJReid_107 Start: 75794, Stop: 76723, Start Num: 51

Candidate Starts for SJReid_107:

(Start: 34 @75749 has 9 MA's), (44, 75773), (Start: 51 @75794 has 4 MA's), (61, 75869), (65, 75893), (66, 75902), (78, 75965), (104, 76082), (109, 76106), (113, 76139), (125, 76193), (128, 76202), (152, 76307), (155, 76322), (159, 76337), (202, 76499), (208, 76520), (231, 76628), (236, 76658),

Gene: Sapo_31 Start: 30227, Stop: 29166, Start Num: 18

Candidate Starts for Sapo_31:

(Start: 18 @30227 has 1 MA's), (64, 30014), (86, 29909), (111, 29801), (118, 29750), (121, 29744), (133, 29696), (138, 29663), (169, 29546), (189, 29507), (233, 29315), (245, 29234), (246, 29231), (248, 29222), (251, 29192),

Gene: SassyC_71 Start: 48238, Stop: 47240, Start Num: 45

Candidate Starts for SassyC_71:

(37, 48262), (Start: 45 @48238 has 7 MA's), (Start: 53 @48226 has 1 MA's), (106, 47947), (107, 47944), (133, 47788), (139, 47752), (159, 47677), (160, 47665), (170, 47614), (173, 47602), (206, 47461), (215, 47428), (218, 47419), (229, 47347), (230, 47341), (244, 47257),

Gene: Savage2526_42 Start: 27701, Stop: 28648, Start Num: 46

Candidate Starts for Savage2526_42:

(Start: 46 @27701 has 89 MA's), (68, 27833), (70, 27845), (71, 27848), (76, 27872), (98, 27968), (106, 28016), (111, 28046), (115, 28073), (131, 28145), (167, 28295), (169, 28304), (192, 28391), (201, 28439), (219, 28499), (231, 28574), (232, 28577), (236, 28604), (237, 28607),

Gene: Scuttle_41 Start: 27661, Stop: 28608, Start Num: 46

Candidate Starts for Scuttle_41:

(Start: 46 @27661 has 89 MA's), (68, 27793), (71, 27808), (76, 27832), (98, 27928), (106, 27976), (111, 28006), (115, 28033), (131, 28105), (167, 28255), (169, 28264), (192, 28351), (201, 28399), (219, 28459), (231, 28534), (232, 28537), (236, 28564), (237, 28567),

Gene: Sergei_39 Start: 27511, Stop: 28464, Start Num: 48

Candidate Starts for Sergei_39:

(Start: 48 @27511 has 17 MA's), (57, 27568), (71, 27658), (74, 27676), (95, 27766), (104, 27817), (111, 27856), (112, 27871), (116, 27889), (117, 27901), (129, 27949), (156, 28066), (166, 28105), (169, 28117), (219, 28315), (231, 28390), (236, 28420), (237, 28423),

Gene: ShakeNBake_66 Start: 47186, Stop: 46188, Start Num: 45

Candidate Starts for ShakeNBake_66:

(28, 47237), (Start: 45 @47186 has 7 MA's), (Start: 53 @47174 has 1 MA's), (106, 46895), (107, 46892), (125, 46763), (133, 46736), (139, 46700), (159, 46625), (160, 46613), (173, 46550), (206, 46409), (215, 46376), (218, 46367), (229, 46295), (230, 46289), (244, 46205),

Gene: Shynx_50 Start: 36115, Stop: 37113, Start Num: 41

Candidate Starts for Shynx_50:

(3, 35722), (5, 35878), (12, 35956), (Start: 39 @36109 has 1 MA's), (Start: 41 @36115 has 11 MA's), (71, 36280), (76, 36304), (100, 36412), (104, 36445), (109, 36469), (117, 36529), (128, 36559), (130, 36565), (133, 36577), (134, 36580), (139, 36613), (147, 36649), (169, 36739), (183, 36835), (209, 36934), (212, 36946), (243, 37090),

Gene: Sienna_54 Start: 40504, Stop: 41709, Start Num: 27

Candidate Starts for Sienna_54:

(Start: 27 @40504 has 4 MA's), (Start: 47 @40564 has 7 MA's), (50, 40573), (71, 40711), (80, 40735), (109, 40888), (113, 40921), (169, 41167), (170, 41170), (171, 41176), (175, 41191), (186, 41311), (191, 41359), (195, 41389), (196, 41395), (201, 41425), (210, 41458), (215, 41476), (217, 41482), (231, 41563), (236, 41593), (238, 41605), (247, 41668),

Gene: SirHarley_59 Start: 43598, Stop: 44728, Start Num: 56

Candidate Starts for SirHarley_59:

(30, 43505), (38, 43532), (40, 43535), (Start: 46 @43550 has 89 MA's), (Start: 56 @43598 has 3 MA's), (60, 43637), (62, 43649), (83, 43748), (97, 43811), (106, 43865), (113, 43913), (124, 43979), (153, 44093), (159, 44120), (163, 44150), (173, 44195), (198, 44429), (212, 44495), (215, 44504), (218, 44513), (240, 44639), (250, 44720),

Gene: Sixama_166 Start: 94053, Stop: 93025, Start Num: 23

Candidate Starts for Sixama_166:

(22, 94059), (Start: 23 @94053 has 1 MA's), (Start: 34 @94014 has 9 MA's), (40, 94002), (55, 93948), (83, 93786), (90, 93765), (104, 93690), (135, 93528), (137, 93522), (142, 93492), (157, 93441), (166, 93399), (167, 93396), (172, 93375), (201, 93273), (229, 93153), (231, 93144), (232, 93141), (236, 93114), (245, 93048), (248, 93036),

Gene: Spocter_40 Start: 29643, Stop: 30608, Start Num: 35

Candidate Starts for Spocter_40:

(Start: 35 @29643 has 2 MA's), (55, 29706), (68, 29805), (75, 29841), (89, 29880), (105, 29943), (106, 29949), (129, 30072), (134, 30090), (136, 30114), (142, 30147), (166, 30225), (188, 30342), (199, 30381), (212, 30444),

Gene: Stewart25555_94 Start: 79965, Stop: 80936, Start Num: 34

Candidate Starts for Stewart25555_94:

(Start: 34 @79965 has 9 MA's), (44, 79989), (Start: 51 @80010 has 4 MA's), (61, 80085), (67, 80124), (104, 80298), (108, 80313), (109, 80322), (118, 80388), (127, 80415), (128, 80418), (132, 80433), (144, 80502), (152, 80523), (155, 80538), (158, 80550), (199, 80691), (202, 80715), (208, 80736), (229, 80835), (231, 80844), (236, 80874),

Gene: Studio_39 Start: 25891, Stop: 24959, Start Num: 47

Candidate Starts for Studio_39:

(Start: 47 @25891 has 7 MA's), (73, 25732), (87, 25687), (115, 25525), (125, 25486), (149, 25384), (151, 25378), (154, 25363), (162, 25336), (172, 25297), (194, 25237), (202, 25192), (220, 25135), (229, 25072), (231, 25063), (242, 25009),

Gene: Stuff_50 Start: 36182, Stop: 37180, Start Num: 41

Candidate Starts for Stuff_50:

(5, 35945), (6, 35951), (12, 36023), (Start: 41 @36182 has 11 MA's), (71, 36347), (76, 36371), (100, 36479), (104, 36512), (109, 36536), (128, 36626), (130, 36632), (133, 36644), (134, 36647), (147, 36716), (169, 36806), (183, 36902), (212, 37013), (243, 37157),

Gene: Sucha_40 Start: 25225, Stop: 26232, Start Num: 21

Candidate Starts for Sucha_40:

(Start: 21 @25225 has 19 MA's), (71, 25435), (106, 25582), (116, 25645), (147, 25789), (152, 25801), (168, 25864), (175, 25891), (177, 25897), (195, 25981), (199, 25996), (216, 26071), (231, 26158),

Gene: Supakev_39 Start: 27504, Stop: 28451, Start Num: 48

Candidate Starts for Supakev_39:

(Start: 48 @27504 has 17 MA's), (58, 27570), (74, 27669), (79, 27693), (95, 27759), (104, 27807), (109, 27831), (112, 27861), (116, 27879), (117, 27891), (127, 27933), (162, 28071), (166, 28092), (167, 28095), (219, 28302), (231, 28377), (232, 28380), (236, 28407), (237, 28410),

Gene: SuperheroCarly_58 Start: 43224, Stop: 44402, Start Num: 46

Candidate Starts for SuperheroCarly_58:

(30, 43179), (38, 43206), (40, 43209), (Start: 46 @43224 has 89 MA's), (Start: 56 @43272 has 3 MA's), (60, 43311), (62, 43323), (83, 43422), (97, 43485), (106, 43539), (113, 43587), (124, 43653), (153, 43767), (159, 43794), (163, 43824), (173, 43869), (198, 44103), (212, 44169), (215, 44178), (218, 44187), (240, 44313), (250, 44394),

Gene: Suppi_41 Start: 27580, Stop: 28527, Start Num: 46

Candidate Starts for Suppi_41:

(Start: 46 @27580 has 89 MA's), (70, 27724), (71, 27727), (73, 27742), (79, 27769), (94, 27832), (98, 27847), (106, 27895), (112, 27940), (115, 27952), (118, 27976), (146, 28102), (166, 28171), (167, 28174), (201, 28318), (219, 28378), (231, 28453), (232, 28456), (236, 28483), (237, 28486),

Gene: Suzy_54 Start: 41757, Stop: 42902, Start Num: 47

Candidate Starts for Suzy_54:

(Start: 47 @41757 has 7 MA's), (50, 41766), (71, 41904), (109, 42081), (113, 42114), (169, 42360), (170, 42363), (171, 42369), (175, 42384), (180, 42420), (184, 42495), (186, 42504), (191, 42552), (195, 42582), (196, 42588), (201, 42618), (210, 42651), (215, 42669), (217, 42675), (231, 42756), (236, 42786), (238, 42798), (247, 42861),

Gene: TMaxx_38 Start: 25180, Stop: 24239, Start Num: 47

Candidate Starts for TMaxx_38:

(Start: 47 @25180 has 7 MA's), (102, 24883), (104, 24871), (149, 24664), (154, 24643), (170, 24586), (172, 24577), (175, 24565), (202, 24472), (220, 24415), (229, 24352), (231, 24343), (242, 24289),

Gene: Talia1610_103 Start: 82860, Stop: 83831, Start Num: 34

Candidate Starts for Talia1610_103:

(Start: 34 @82860 has 9 MA's), (44, 82884), (Start: 51 @82905 has 4 MA's), (65, 83004), (67, 83019), (71, 83043), (78, 83076), (104, 83193), (108, 83208), (125, 83304), (128, 83313), (152, 83418), (155, 83433), (157, 83442), (175, 83517), (192, 83559), (202, 83610), (208, 83631), (231, 83739), (236, 83769),

Gene: TattModd_40 Start: 27321, Stop: 28268, Start Num: 46

Candidate Starts for TattModd_40:

(Start: 46 @27321 has 89 MA's), (59, 27390), (68, 27453), (70, 27465), (71, 27468), (76, 27492), (98, 27588), (106, 27636), (111, 27666), (115, 27693), (116, 27699), (131, 27765), (167, 27915), (169, 27924), (192, 28011), (201, 28059), (219, 28119), (231, 28194), (232, 28197), (236, 28224), (237, 28227),

Gene: Temper16_39 Start: 27511, Stop: 28464, Start Num: 48

Candidate Starts for Temper16_39:

(Start: 48 @27511 has 17 MA's), (57, 27568), (71, 27658), (74, 27676), (95, 27766), (104, 27817), (111, 27856), (112, 27871), (116, 27889), (117, 27901), (129, 27949), (156, 28066), (166, 28105), (169, 28117), (219, 28315), (231, 28390), (236, 28420), (237, 28423),

Gene: Terapin_55 Start: 40488, Stop: 41633, Start Num: 47

Candidate Starts for Terapin_55:

(Start: 27 @40428 has 4 MA's), (Start: 47 @40488 has 7 MA's), (50, 40497), (71, 40635), (80, 40659), (109, 40812), (113, 40845), (169, 41091), (170, 41094), (171, 41100), (175, 41115), (186, 41235), (191, 41283), (195, 41313), (196, 41319), (201, 41349), (210, 41382), (215, 41400), (217, 41406), (231, 41487), (236, 41517), (238, 41529), (247, 41592),

Gene: Theresita_43 Start: 26461, Stop: 27471, Start Num: 21

Candidate Starts for Theresita_43:

(Start: 21 @26461 has 19 MA's), (70, 26668), (71, 26671), (106, 26821), (138, 26989), (152, 27040), (165, 27094), (195, 27220), (204, 27265), (217, 27313), (226, 27355), (231, 27397), (236, 27427), (242, 27448),

Gene: Thoth_57 Start: 43106, Stop: 44284, Start Num: 46

Candidate Starts for Thoth_57:

(4, 42824), (9, 42854), (13, 42917), (Start: 46 @43106 has 89 MA's), (Start: 56 @43154 has 3 MA's), (60, 43193), (62, 43205), (83, 43304), (97, 43367), (106, 43421), (113, 43469), (124, 43535), (153, 43649), (159, 43676), (163, 43706), (173, 43751), (198, 43985), (212, 44051), (215, 44060), (218, 44069), (240, 44195), (250, 44276),

Gene: TripleC_37 Start: 27531, Stop: 26590, Start Num: 47

Candidate Starts for TripleC_37:

(Start: 47 @27531 has 7 MA's), (84, 27330), (104, 27222), (149, 27015), (154, 26994), (172, 26928), (175, 26916), (202, 26823), (212, 26784), (220, 26766), (229, 26703), (231, 26694), (242, 26640),

Gene: Troll4_57 Start: 43237, Stop: 44415, Start Num: 46

Candidate Starts for Troll4_57:

(4, 42955), (9, 42985), (13, 43048), (Start: 46 @43237 has 89 MA's), (Start: 56 @43285 has 3 MA's), (60, 43324), (62, 43336), (83, 43435), (97, 43498), (106, 43552), (113, 43600), (124, 43666), (153, 43780), (159, 43807), (163, 43837), (173, 43882), (198, 44116), (212, 44182), (215, 44191), (218, 44200), (240, 44326), (250, 44407),

Gene: TurboVicky_43 Start: 27685, Stop: 28698, Start Num: 21

Candidate Starts for TurboVicky_43:

(Start: 21 @27685 has 19 MA's), (58, 27814), (71, 27895), (88, 27964), (106, 28048), (120, 28132), (133, 28183), (146, 28252), (147, 28255), (175, 28357), (177, 28363), (195, 28447), (199, 28462), (209, 28513), (223, 28561), (231, 28624),

Gene: Typher_45 Start: 27803, Stop: 28816, Start Num: 21

Candidate Starts for Typher_45:

(Start: 21 @27803 has 19 MA's), (58, 27932), (71, 28013), (88, 28082), (106, 28166), (120, 28250), (133, 28301), (146, 28370), (147, 28373), (175, 28475), (177, 28481), (195, 28565), (199, 28580), (209, 28631), (223, 28679), (231, 28742),

Gene: UNTPL_52 Start: 36210, Stop: 37214, Start Num: 39

Candidate Starts for UNTPL_52:

(3, 35823), (5, 35979), (12, 36057), (Start: 39 @36210 has 1 MA's), (Start: 41 @36216 has 11 MA's), (71, 36381), (76, 36405), (100, 36513), (104, 36546), (109, 36570), (117, 36630), (128, 36660), (130, 36666), (133, 36678), (134, 36681), (136, 36705), (139, 36714), (147, 36750), (169, 36840), (183, 36936), (209, 37035), (210, 37038), (212, 37047), (243, 37191),

Gene: Urla_40 Start: 27482, Stop: 28432, Start Num: 46

Candidate Starts for Urla_40:

(Start: 46 @27482 has 89 MA's), (68, 27614), (70, 27626), (71, 27629), (73, 27644), (76, 27653), (98, 27749), (106, 27797), (109, 27812), (115, 27854), (118, 27878), (131, 27926), (133, 27935), (162, 28052), (167, 28079), (169, 28088), (219, 28283), (225, 28313), (231, 28358), (232, 28361), (236, 28388), (237, 28391),

Gene: Vallejo_42 Start: 27675, Stop: 28622, Start Num: 46

Candidate Starts for Vallejo_42:

(Start: 46 @27675 has 89 MA's), (59, 27744), (68, 27807), (70, 27819), (71, 27822), (76, 27846), (98, 27942), (106, 27990), (111, 28020), (115, 28047), (131, 28119), (167, 28269), (169, 28278), (192, 28365), (201, 28413), (219, 28473), (231, 28548), (232, 28551), (236, 28578), (237, 28581),

Gene: Virizion_71 Start: 47534, Stop: 46536, Start Num: 45

Candidate Starts for Virizion_71:

(Start: 45 @47534 has 7 MA's), (Start: 53 @47522 has 1 MA's), (106, 47243), (107, 47240), (125, 47111), (133, 47084), (139, 47048), (159, 46973), (160, 46961), (173, 46898), (198, 46799), (206, 46757), (215, 46724), (218, 46715), (229, 46643), (230, 46637), (244, 46553),

Gene: Visconti_58 Start: 43117, Stop: 44295, Start Num: 46

Candidate Starts for Visconti_58:

(4, 42835), (9, 42865), (13, 42928), (Start: 46 @43117 has 89 MA's), (Start: 56 @43165 has 3 MA's), (60, 43204), (62, 43216), (83, 43315), (97, 43378), (106, 43432), (113, 43480), (124, 43546), (153, 43660), (159, 43687), (163, 43717), (173, 43762), (198, 43996), (212, 44062), (215, 44071), (218, 44080), (240, 44206), (250, 44287),

Gene: Vulture_39 Start: 27432, Stop: 28382, Start Num: 48

Candidate Starts for Vulture_39:

(25, 27378), (Start: 48 @27432 has 17 MA's), (71, 27579), (74, 27597), (95, 27687), (104, 27738), (111, 27777), (112, 27792), (116, 27810), (117, 27822), (129, 27870), (156, 27987), (166, 28026), (169, 28038), (192, 28125), (201, 28173), (219, 28233), (231, 28308), (232, 28311), (236, 28338), (237, 28341),

Gene: WaddleDee_90 Start: 78467, Stop: 79393, Start Num: 51

Candidate Starts for WaddleDee_90:

(44, 78446), (Start: 51 @78467 has 4 MA's), (61, 78542), (67, 78581), (104, 78755), (108, 78770), (118, 78845), (127, 78872), (128, 78875), (134, 78896), (144, 78959), (152, 78980), (155, 78995), (158, 79007), (202, 79172), (208, 79193), (229, 79292), (231, 79301), (236, 79331),

Gene: WaldoWhy_59 Start: 43170, Stop: 44348, Start Num: 46

Candidate Starts for WaldoWhy_59:

(4, 42888), (9, 42918), (13, 42981), (Start: 46 @43170 has 89 MA's), (Start: 56 @43218 has 3 MA's), (60, 43257), (62, 43269), (83, 43368), (97, 43431), (106, 43485), (113, 43533), (124, 43599), (153, 43713), (159, 43740), (163, 43770), (173, 43815), (198, 44049), (212, 44115), (215, 44124), (218, 44133), (240, 44259), (250, 44340),

Gene: Wawa_41 Start: 27508, Stop: 28455, Start Num: 46

Candidate Starts for Wawa_41:

(Start: 46 @27508 has 89 MA's), (68, 27640), (70, 27652), (71, 27655), (76, 27679), (98, 27775), (106, 27823), (111, 27853), (115, 27880), (131, 27952), (167, 28102), (169, 28111), (192, 28198), (201, 28246), (219, 28306), (231, 28381), (232, 28384), (236, 28411), (237, 28414),

Gene: Wayne_41 Start: 27626, Stop: 28573, Start Num: 46

Candidate Starts for Wayne_41:

(Start: 46 @27626 has 89 MA's), (70, 27770), (71, 27773), (73, 27788), (79, 27815), (94, 27878), (98, 27893), (106, 27941), (112, 27986), (115, 27998), (118, 28022), (146, 28148), (166, 28217), (167, 28220), (201, 28364), (219, 28424), (231, 28499), (232, 28502), (236, 28529), (237, 28532),

Gene: Wentworth_66 Start: 47288, Stop: 46290, Start Num: 45

Candidate Starts for Wentworth_66:

(28, 47339), (Start: 45 @47288 has 7 MA's), (Start: 53 @47276 has 1 MA's), (106, 46997), (107, 46994), (119, 46898), (133, 46838), (139, 46802), (159, 46727), (160, 46715), (170, 46664), (173, 46652), (206, 46511), (215, 46478), (218, 46469), (229, 46397), (230, 46391), (234, 46367),

Gene: Wilkos_68 Start: 47443, Stop: 46445, Start Num: 45

Candidate Starts for Wilkos_68:

(28, 47494), (Start: 45 @47443 has 7 MA's), (Start: 53 @47431 has 1 MA's), (106, 47152), (107, 47149), (125, 47020), (133, 46993), (139, 46957), (159, 46882), (160, 46870), (170, 46819), (173, 46807), (206, 46666), (215, 46633), (218, 46624), (229, 46552), (230, 46546), (234, 46522),

Gene: WonderBoy_38 Start: 26303, Stop: 27253, Start Num: 46

Candidate Starts for WonderBoy_38:

(Start: 46 @26303 has 89 MA's), (68, 26435), (70, 26447), (71, 26450), (76, 26474), (98, 26570), (106, 26618), (109, 26633), (115, 26675), (118, 26699), (129, 26741), (131, 26747), (162, 26873), (166, 26897), (167, 26900), (169, 26909), (201, 27044), (219, 27104), (231, 27179), (236, 27209), (237, 27212),

Gene: Yara_62 Start: 46145, Stop: 45150, Start Num: 49

Candidate Starts for Yara_62:

(Start: 49 @46145 has 1 MA's), (Start: 53 @46136 has 1 MA's), (106, 45857), (107, 45854), (133, 45698), (139, 45662), (143, 45635), (159, 45587), (160, 45575), (170, 45524), (173, 45512), (200, 45401), (206, 45371), (215, 45338), (218, 45329), (229, 45257), (234, 45227),

Gene: Zanella_42 Start: 27511, Stop: 28524, Start Num: 21

Candidate Starts for Zanella_42:

(Start: 21 @27511 has 19 MA's), (71, 27721), (88, 27790), (106, 27874), (120, 27958), (133, 28009), (146, 28078), (147, 28081), (175, 28183), (177, 28189), (195, 28273), (199, 28288), (209, 28339), (223, 28387), (231, 28450),

Gene: Zooman_97 Start: 74278, Stop: 73343, Start Num: 42

Candidate Starts for Zooman_97:

(Start: 42 @74278 has 6 MA's), (61, 74176), (62, 74173), (63, 74161), (69, 74125), (83, 74071), (99, 74020), (102, 73993), (104, 73981), (117, 73897), (120, 73891), (125, 73876), (132, 73852), (150, 73765), (157, 73735), (207, 73552), (208, 73549), (223, 73504), (232, 73438), (236, 73411),

Gene: Zorro_42 Start: 27635, Stop: 28582, Start Num: 46

Candidate Starts for Zorro_42:

(Start: 46 @27635 has 89 MA's), (68, 27767), (70, 27779), (71, 27782), (76, 27806), (98, 27902), (106, 27950), (111, 27980), (115, 28007), (131, 28079), (167, 28229), (169, 28238), (192, 28325), (201, 28373), (219, 28433), (231, 28508), (236, 28538), (237, 28541),